

V&V Reference Report

L2 ASCDS Version : 8.4.4

Observation 58019 - L2 Version 2
Chandra X-Ray Center

L2 Processing Date : May 7 2012

Contents

1	Front	2
2	OBI	3
2.1	OBI	3
2.1.1	Images	3
2.1.2	Bias	3
2.1.3	Parameters	4
2.1.4	Events	4
2.2	Compared Parameters	5
2.3	Star Slots	6
2.4	FID Slots	6
A	Summary	7
A.1	Status	7
A.2	Comments	7

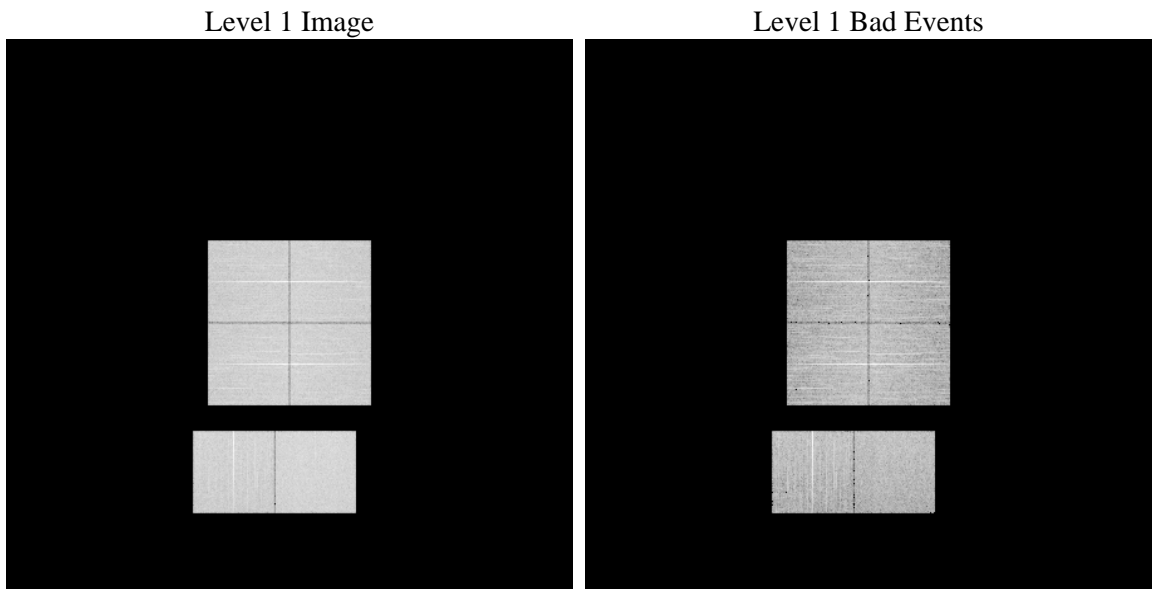
1 Front

seq_num	 	Sequence number
obs_id	58019	Observation id
title	ACIS-012367 diagnostics	Proposal title
observer	CHANDRA engineering request/realtime commanding	Principal investig
object	 	Source name
dtcycle	0	
cycle	P	events from which exps? Prim/Second/Both
ra_targ	0.0	Observer's specified target RA [deg]
dec_targ	0.0	Observer's specified target Dec [deg]
ra_nom	103.02877435561	Nominal RA [deg]
dec_nom	-2.9896702218157	Nominal Dec [deg]
roll_nom	346.30336254758	Nominal Roll [deg]
revision	2	Processing version of data
ontime	8187.9040526748	Sum of GTIs [s]
livetime	8084.2238813959	Livetime [s]
ontime0	8187.8630126715	Sum of GTIs [s]
ontime1	8187.8219726682	Sum of GTIs [s]
ontime2	8187.7809326649	Sum of GTIs [s]
ontime3	8187.9450926781	Sum of GTIs [s]
ontime6	8187.7398926616	Sum of GTIs [s]
ontime7	8187.9040526748	Sum of GTIs [s]
l2events	632633	Number of level 2 events

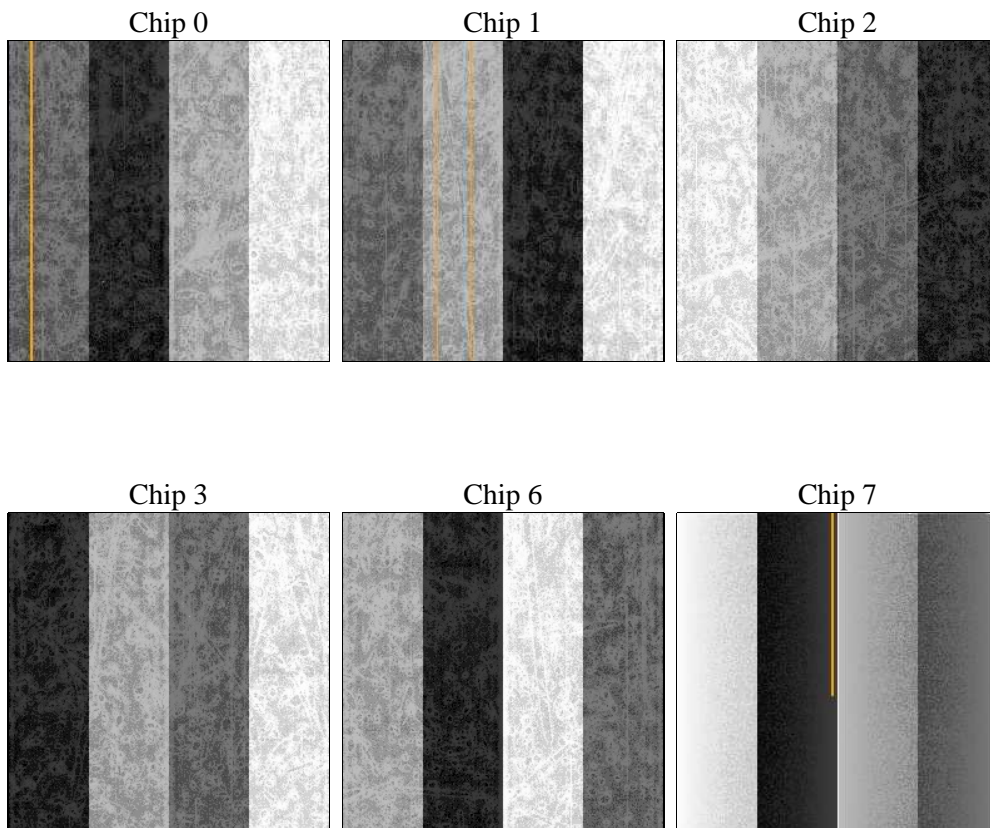
2 OBI

2.1 OBI

2.1.1 Images



2.1.2 Bias



2.1.3 Parameters

obi_num	0	Obi number	sched_exp_time	0.0	[s] Scheduled observation exposure time
ascdsver	8.4.4	Processing system revision	ontime	8187.9040526748	Sum of GTIs [s]
caldsver	4.4.9	 	ontime0	8187.8630126715	Sum of GTIs [s]
date	2012-05-07T18:22:25	Date and time of file creation	ontime1	8187.8219726682	Sum of GTIs [s]
revision	2	Processing version of data	ontime2	8187.7809326649	Sum of GTIs [s]
			ontime3	8187.9450926781	Sum of GTIs [s]
			ontime6	8187.7398926616	Sum of GTIs [s]
			ontime7	8187.9040526748	Sum of GTIs [s]
			l1events	1079422	Number of level 1 events

2.1.4 Events

	ccd 0	ccd 1	ccd 2	ccd 3	ccd 6	ccd 7		ccd 0	ccd 1	ccd 2	ccd 3	ccd 6	ccd 7
level 1 events	168827	172525	177475	177407	180535	202653	grade 0 events	56814	56565	58266	59127	58760	28274
rejected events	64592	67117	72581	71352	71006	65240		33%	32%	32%	33%	32%	13%
rejected %	38%	38%	40%	40%	39%	32%	grade 1 events	401	318	386	415	316	158
								0%	0%	0%	0%	0%	0%
							grade 2 events	18822	19632	18076	18403	19340	30254
								11%	11%	10%	10%	10%	14%
							grade 3 events	7073	7076	7262	7302	7067	12907
								4%	4%	4%	4%	3%	6%
							grade 4 events	7025	6982	6928	7213	7161	13002
								4%	4%	3%	4%	3%	6%
							grade 5 events	3882	3881	3611	4213	4047	10429
								2%	2%	2%	2%	2%	5%
							grade 6 events	15652	16213	15500	15178	18332	54512
								9%	9%	8%	8%	10%	26%
							grade 7 events	59158	61858	67446	65556	65512	53117
								35%	35%	38%	36%	36%	26%

2.2 Compared Parameters

Parameter	Planned	Actual	Parameter	Planned	Actual
Instrument	ACIS	ACIS	Obspar format version number	7	7
Detector	ACIS-012367	ACIS-012367	Obspar file type	PREDICTED	ACTUAL
Grating	NONE	NONE	Obspar update status	NONE	UPDATED
Data mode	FAINT	FAINT	On-chip summing requested	N	N
Observation mode	SECONDARY	SECONDARY	Subarray requested	NONE	NONE
[deg] Pointing RA	0	103.0287743556137	Alternating exposures requested	N	N
[deg] Pointing Dec	0	-2.989670221815653	[s] Primary exposure time	3.2	3.2
[deg] Pointing Roll	0.0	346.3033625475772			
[mm] SIM focus pos	-0.782348	-0.6828225247311905			
[mm] SIM defocus	0	0.8505141146731063			
[mm] SIM translation stage pos	-233.592463	250.466033080201			
[mm] SIM translation stage offset	0	-0.01005468664627074			
[s] Observation start time (MET)	316221694.448746	316221693.42375			
Observation start date	2008-01-08T23:21:34	2008-01-08T23:21:33			
[s] Observation end time (MET)	316244670.84986	316244669.82486			
Observation end date	2008-01-09T05:44:31	2008-01-09T05:44:29			
Read mode	TIMED	TIMED			

2.3 Star Slots

2.4 FID Slots

A Summary

A.1 Status

V&V Scientist	Beth Sundheim
V&V Date (YYYY-MM-DD)	2012.05.10
V&V Edition	1
V&V Disposition and Status	OK
V&V Charge Time	8.1879040526748

A.2 Comments