

V&V Reference Report

L2 ASCDS Version : 8.5.1

Observation 5789 - L2 Version 3
Chandra X-Ray Center

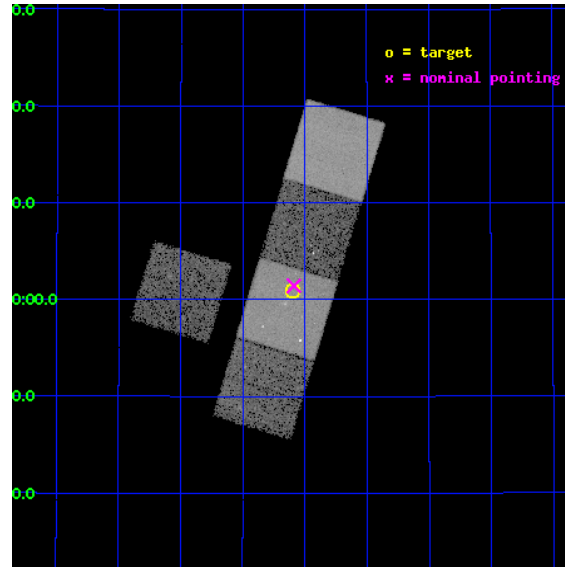
L2 Processing Date : Dec 15 2012

Contents

1	Front	2
2	OBI	3
2.1	OBI	3
2.1.1	Images	3
2.1.2	Bias	3
2.1.3	Parameters	4
2.1.4	Events	4
2.2	Compared Parameters	5
2.3	Aspect	6
2.4	Star Slots	9
2.4.1	Slot 3	9
2.4.2	Slot 4	10
2.4.3	Slot 5	11
2.4.4	Slot 6	12
2.4.5	Slot 7	13
2.5	FID Slots	14
2.5.1	Slot 0	14
2.5.2	Slot 1	15
2.5.3	Slot 2	16
A	Summary	17
A.1	Status	17
A.2	Comments	17

1 Front

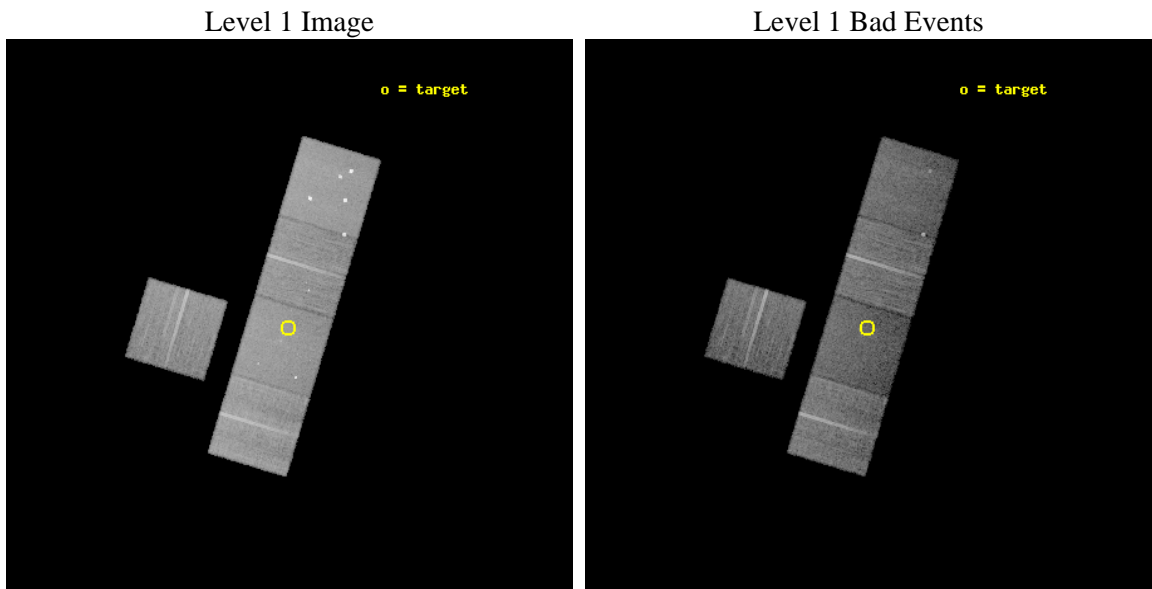
seq_num	800502	Sequence number
obs_id	5789	Observation id
title	HI-Deficient Ultracompact Groups	Proposal title
observer	Prof Trevor Ponman	Principal investigator
object	HCG 37	Source name
dtcycle	0	
cycle	P	events from which exps? Prim/Second/Both
ra_targ	138.398333	Observer's specified target RA [deg]
dec_targ	30.014167	Observer's specified target Dec [deg]
ra_nom	138.39703296179	Nominal RA [deg]
dec_nom	30.023784727949	Nominal Dec [deg]
roll_nom	106.83404357917	Nominal Roll [deg]
revision	3	Processing version of data
ontime	18169.099965036	Sum of GTIs [s]
livetime	17931.707298096	Livetime [s]
ontime3	18162.817994535	Sum of GTIs [s]
ontime5	18169.099965036	Sum of GTIs [s]
ontime6	18165.958974779	Sum of GTIs [s]
ontime7	18169.099965036	Sum of GTIs [s]
ontime8	18169.099965036	Sum of GTIs [s]
l2events	159112	Number of level 2 events



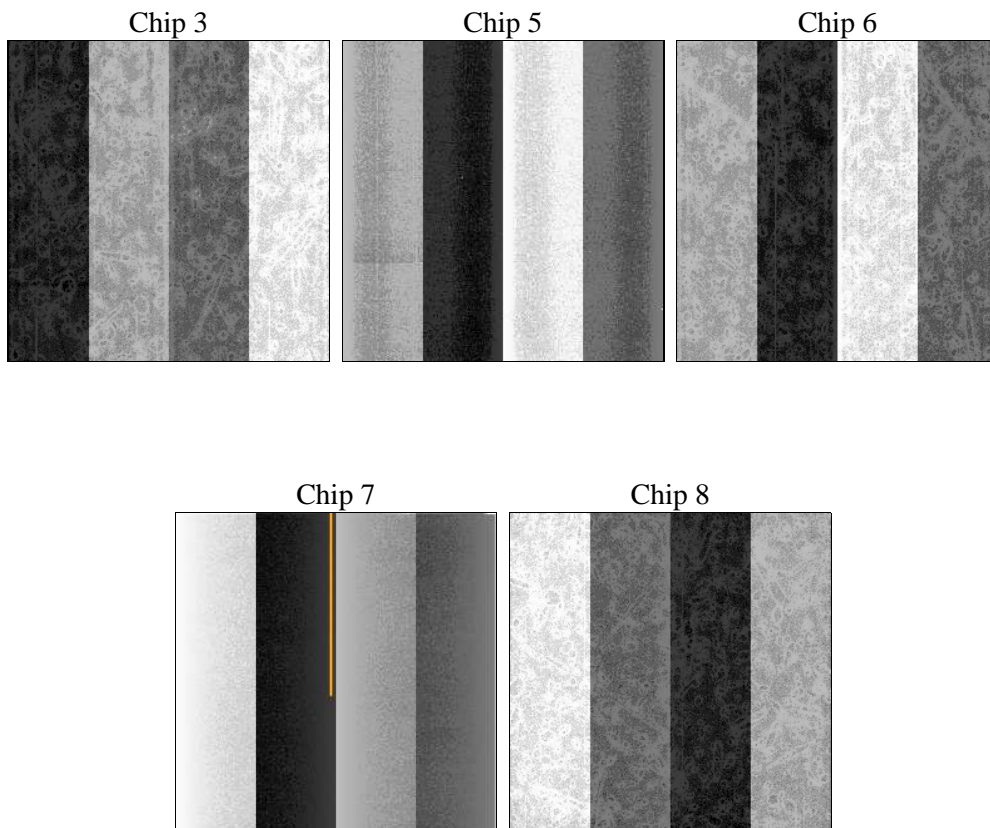
2 OBI

2.1 OBI

2.1.1 Images



2.1.2 Bias



2.1.3 Parameters

obi_num	0	Obi number	sched_exp_time	18000.000000	[s] Scheduled observation exposure time
ascdsver	8.5.1	Processing system revision	ontime	18169.099965036	Sum of GTIs [s]
caldsver	4.5.5	 	ontime3	18162.817994535	Sum of GTIs [s]
date	2012-12-15T23:55:33	Date and time of file creation	ontime5	18169.099965036	Sum of GTIs [s]
revision	3	Processing version of data	ontime6	18165.958974779	Sum of GTIs [s]
			ontime7	18169.099965036	Sum of GTIs [s]
			ontime8	18169.099965036	Sum of GTIs [s]
			l1events	705849	Number of level 1 events

2.1.4 Events

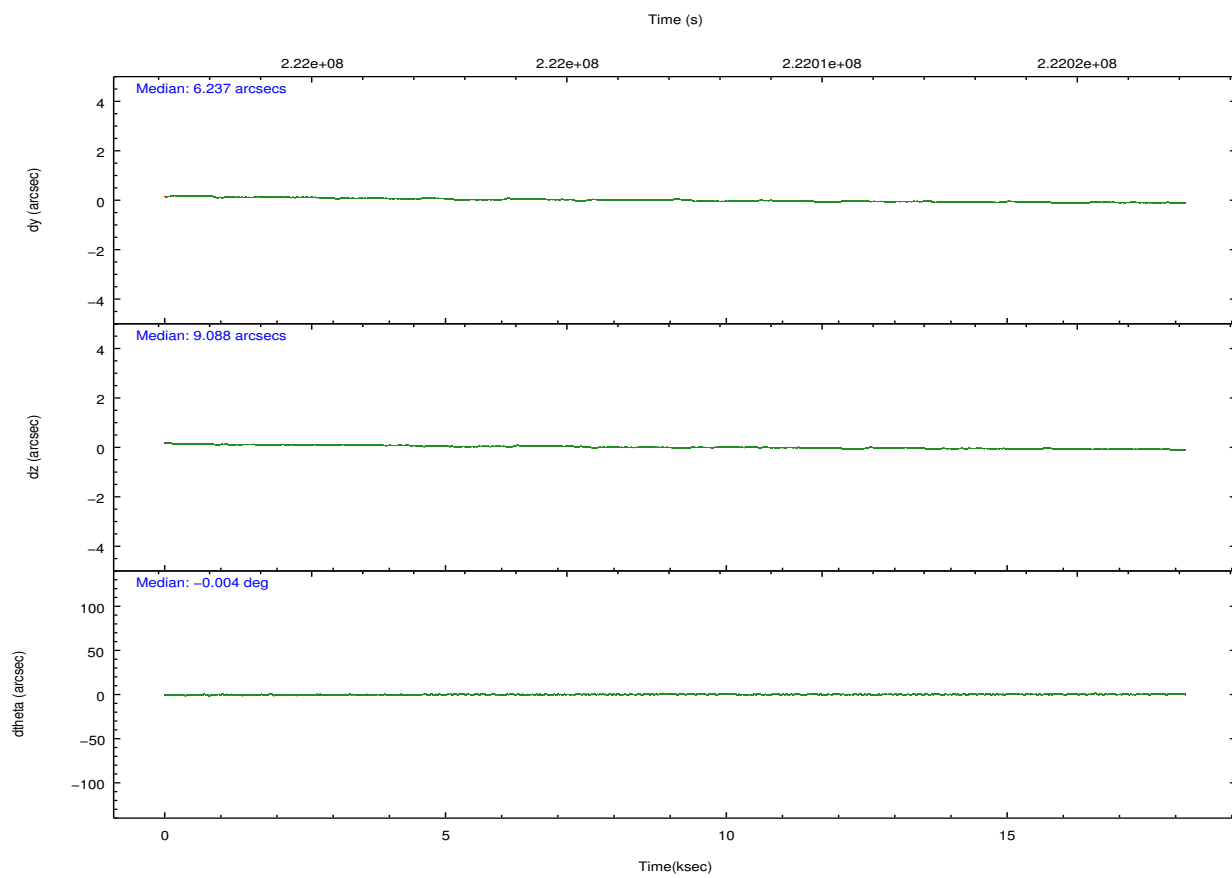
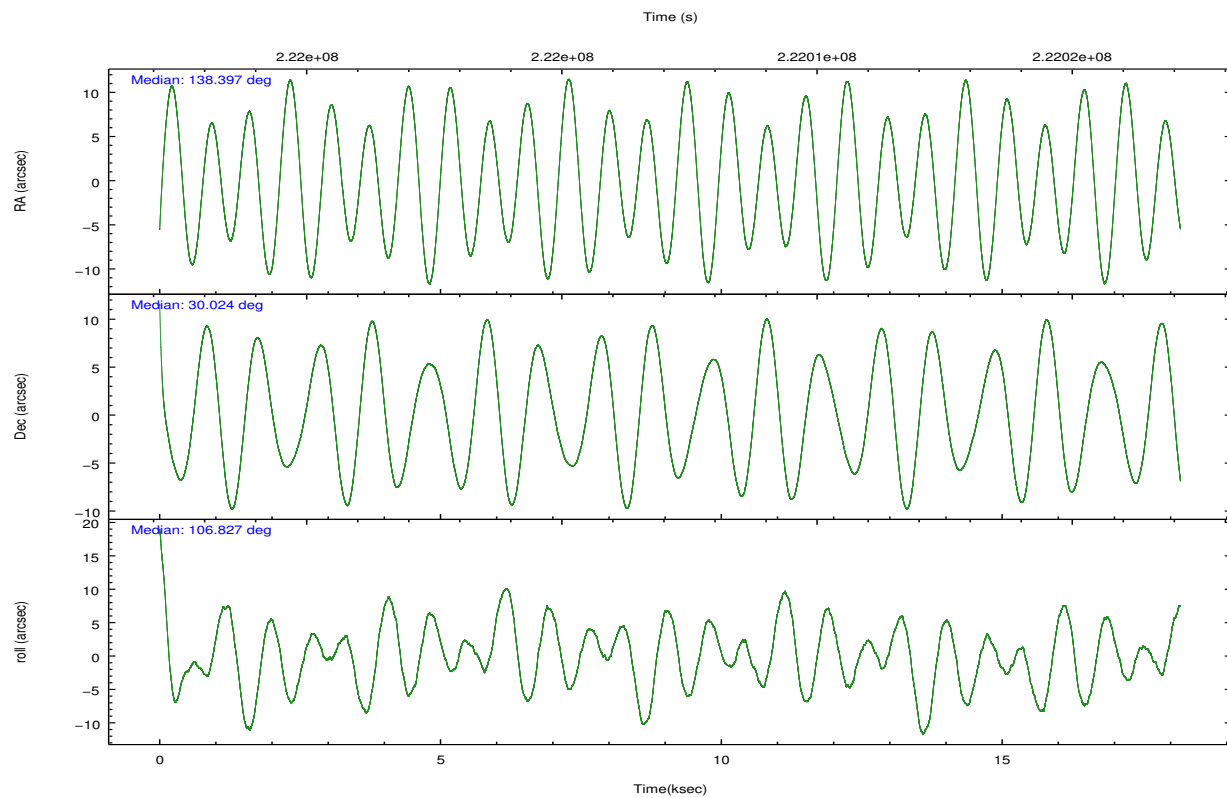
	ccd 3	ccd 5	ccd 6	ccd 7	ccd 8
level 1 events	114596	177542	124122	134446	155143
rejected events	104371	86774	111797	75276	122968
rejected %	91%	48%	90%	55%	79%

	ccd 3	ccd 5	ccd 6	ccd 7	ccd 8
grade 0 events	3962	20130	4989	6668	10473
	3%	11%	4%	4%	6%
grade 1 events	52	713	52	130	100
	0%	0%	0%	0%	0%
grade 2 events	2239	26610	2700	12549	7550
	1%	14%	2%	9%	4%
grade 3 events	1211	3827	1393	6011	3743
	1%	2%	1%	4%	2%
grade 4 events	1236	3848	1332	6113	3475
	1%	2%	1%	4%	2%
grade 5 events	4393	13519	4910	13954	6629
	3%	7%	3%	10%	4%
grade 6 events	2205	41393	2672	31365	9198
	1%	23%	2%	23%	5%
grade 7 events	99298	67502	106074	57656	113975
	86%	38%	85%	42%	73%

2.2 Compared Parameters

Parameter	Planned	Actual	Parameter	Planned	Actual
Instrument	ACIS	ACIS	Obspar format version number	7	7
Detector	ACIS-35678	ACIS-35678	Obspar file type	PREDICTED	ACTUAL
Grating	NONE	NONE	Obspar update status	NONE	UPDATED
Data mode	VFAINT	VFAINT	Number of optional ACIS chips dropped	0	0
Observation mode	POINTING	POINTING	On-chip summing requested	N	N
[deg] Pointing RA	138.420246	138.3970329617935	Subarray requested	NONE	NONE
[deg] Pointing Dec	30.005406	30.0237847279491	Alternating exposures requested	N	N
[deg] Pointing Roll	106.665809	106.8340435791678	[s] Primary exposure time	0.000000	3.1
[mm] SIM focus pos	-0.684267	-0.6828225247311905			
[mm] SIM defocus	0	0.001444936568705701			
[mm] SIM translation stage pos	-190.132523	-190.1425803651734			
[mm] SIM translation stage offset	0	0.01005778216563158			
[s] Observation start time (MET)	221998208.184000	221996645.21032			
Observation start date	2005-01-13T10:09:04	2005-01-13T09:44:05			
[s] Observation end time (MET)	222016208.184000	222017404.02375			
Observation end date	2005-01-13T15:09:04	2005-01-13T15:30:04			
Read mode	TIMED	TIMED			

2.3 Aspect

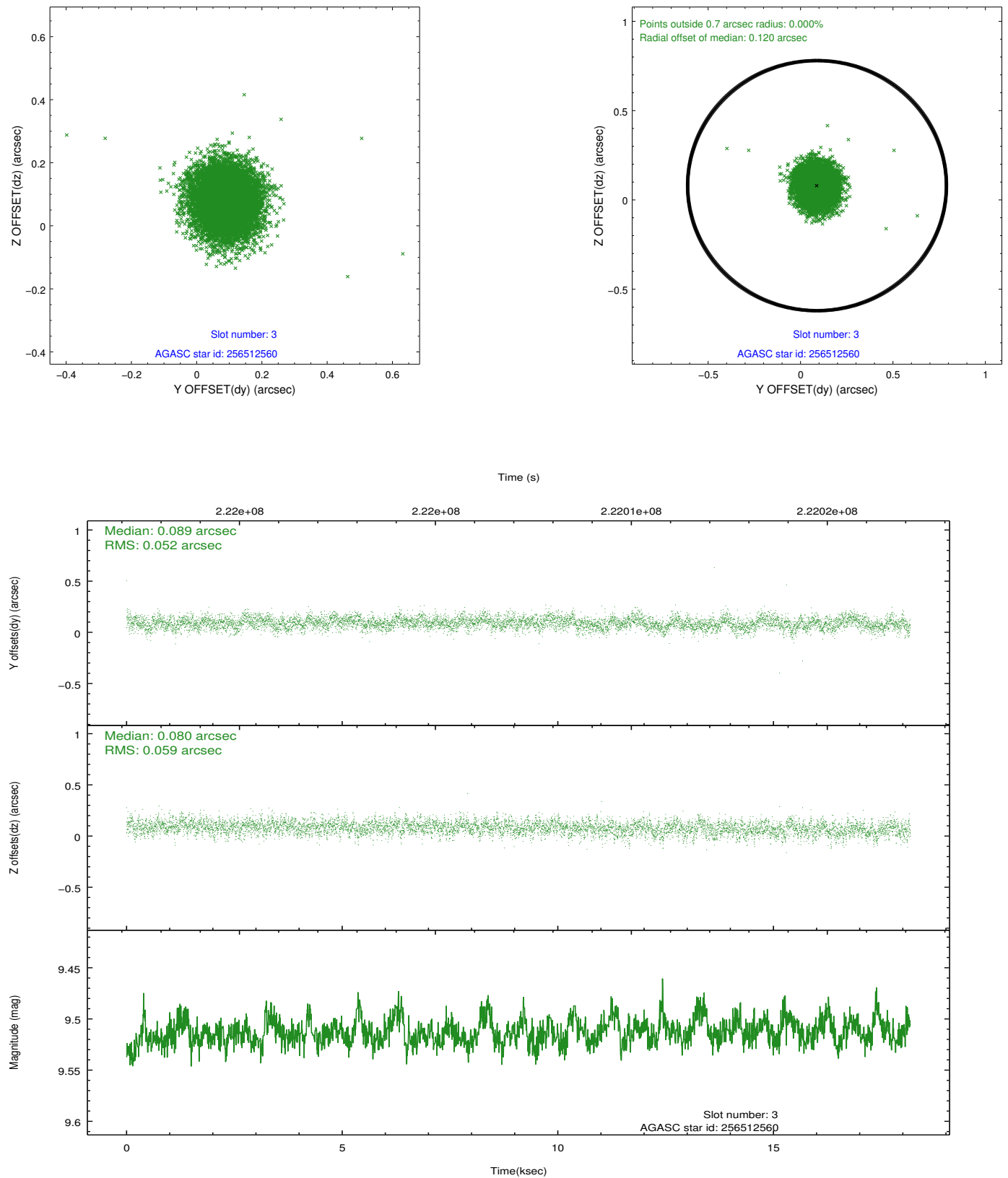


Slot Statistics

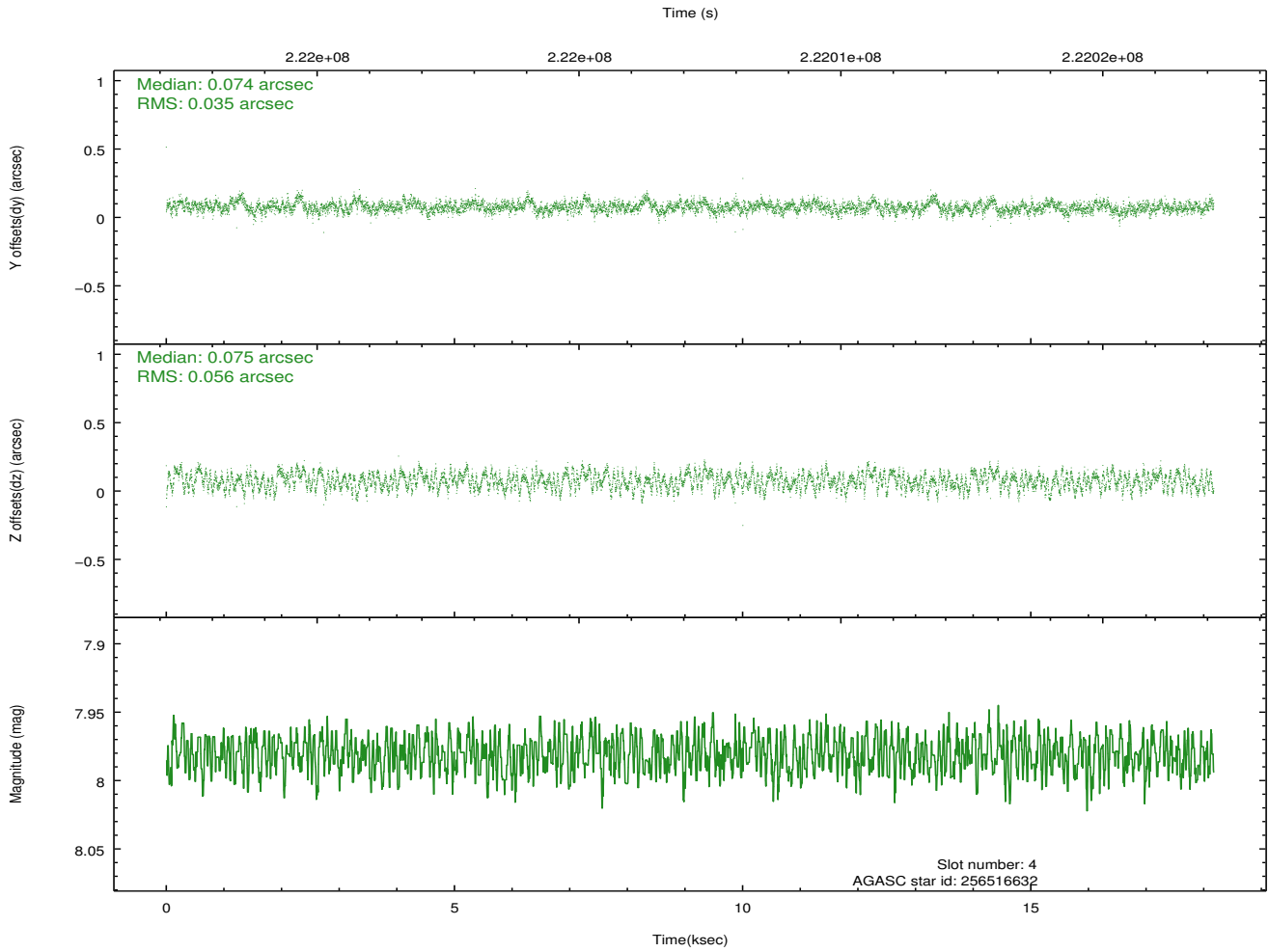
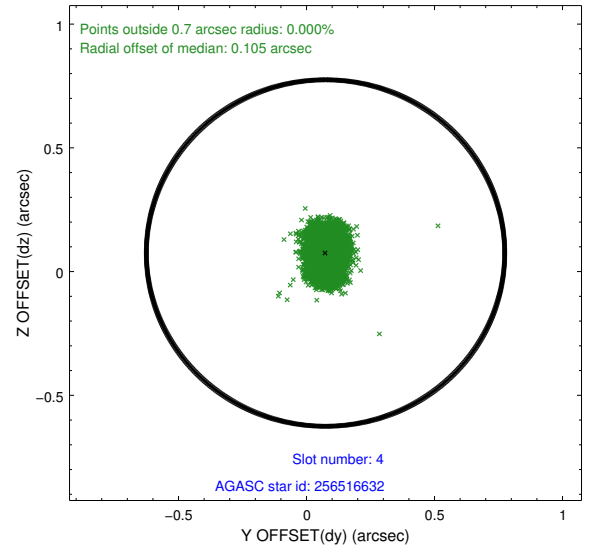
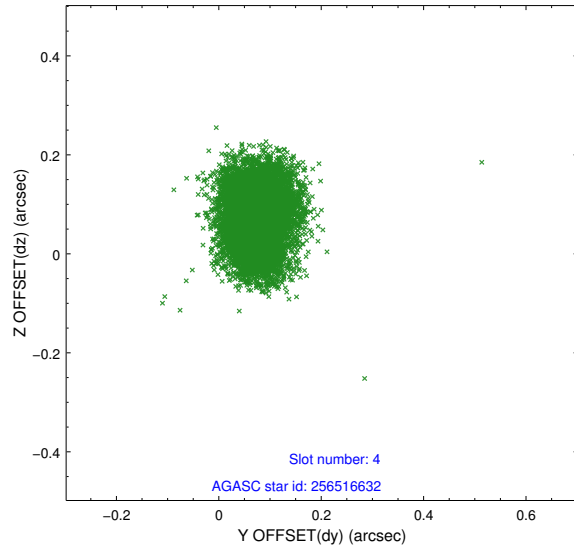
slot	status	id	mag	n_pts	med_dy	med_dz	dr1	dr2	ra	dec	mean_y	mean_z
0	FID	ACIS-S-2	7.10	4434	-0.055	-0.048	0.013	0.021	0.000000	0.000000	-759.02	-1730.32
1	FID	ACIS-S-4	7.21	4434	0.092	0.040	0.020	0.031	0.000000	0.000000	2154.31	178.03
2	FID	ACIS-S-5	7.23	4434	-0.070	0.018	0.016	0.026	0.000000	0.000000	-1811.60	171.92
3	GUIDE	256512560	9.51	8863	0.089	0.080	0.082	0.136	138.888209	29.792531	-1150.28	-1181.61
4	GUIDE	256516632	7.98	8864	0.074	0.075	0.070	0.112	138.597890	29.944780	-367.50	-468.39
5	GUIDE	326636960	9.56	8843	-0.094	-0.161	0.106	0.170	137.698852	30.105026	994.44	2047.45
6	GUIDE	326639392	8.60	8865	-0.087	-0.109	0.066	0.105	137.626996	30.361101	1941.53	1991.38
7	GUIDE	326770928	9.52	8862	0.020	0.118	0.109	0.180	139.101080	30.039052	-486.44	-2068.91

2.4 Star Slots

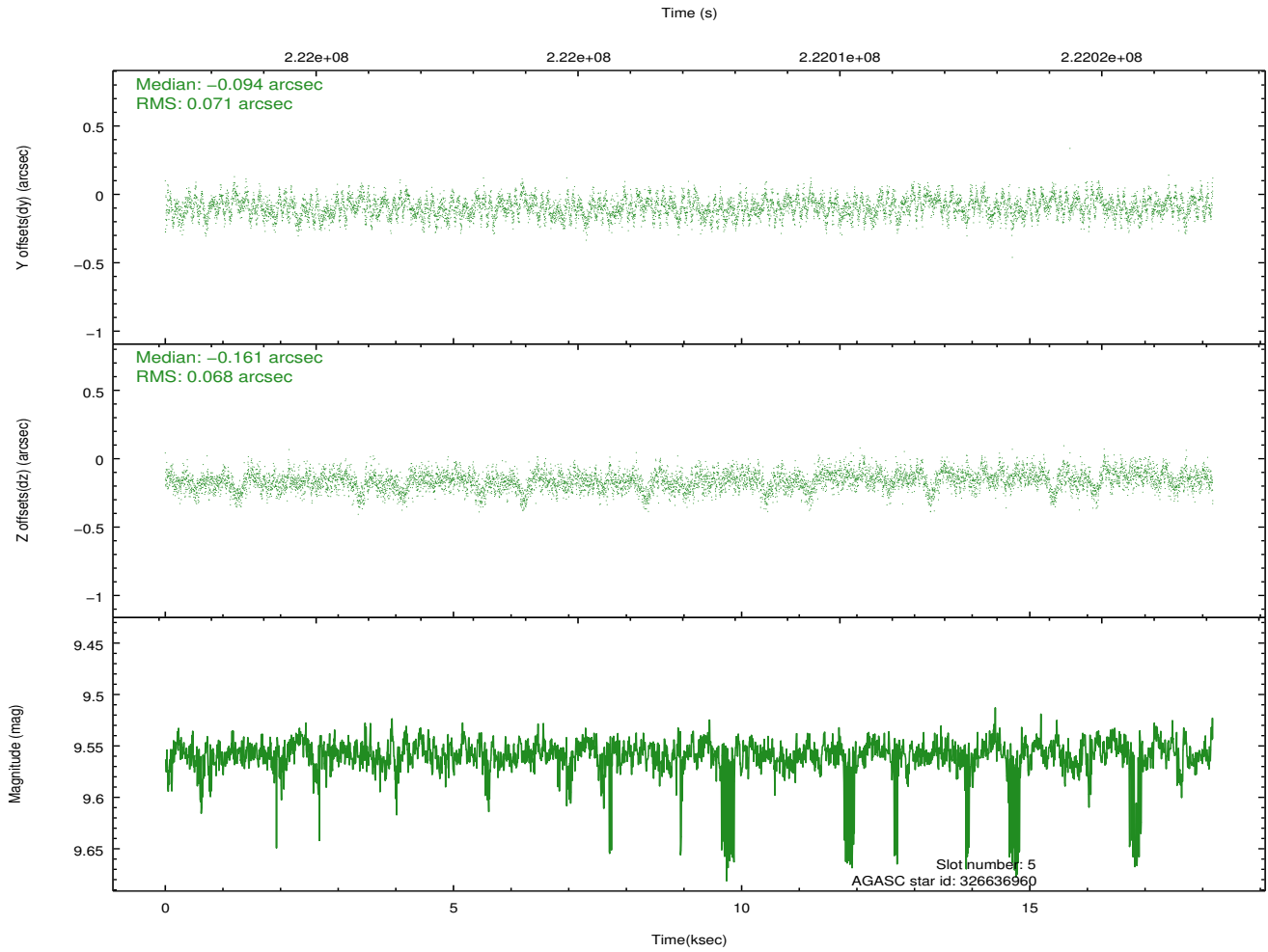
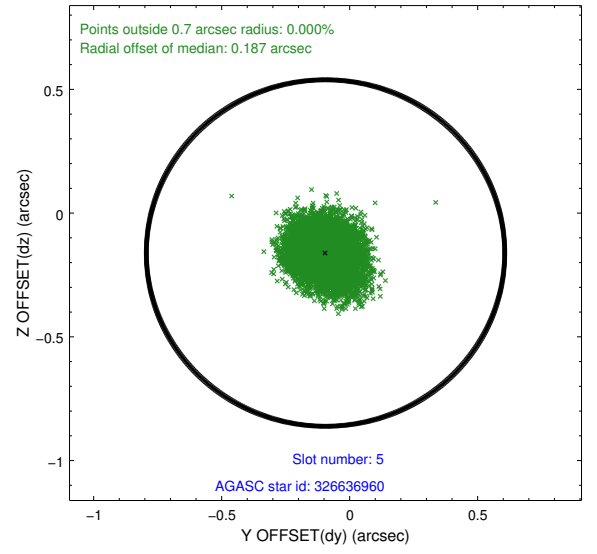
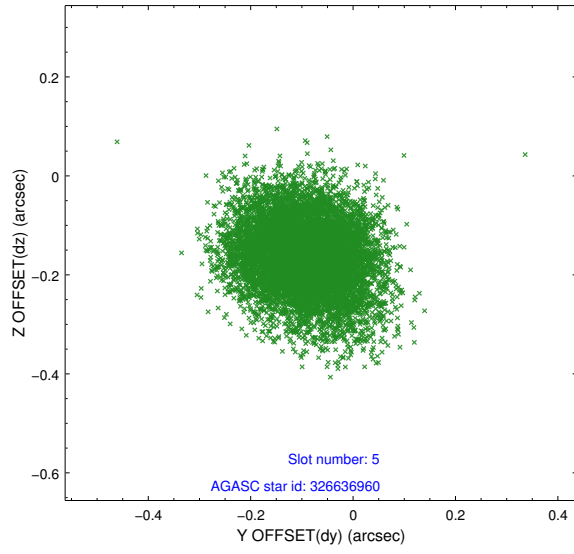
2.4.1 Slot 3



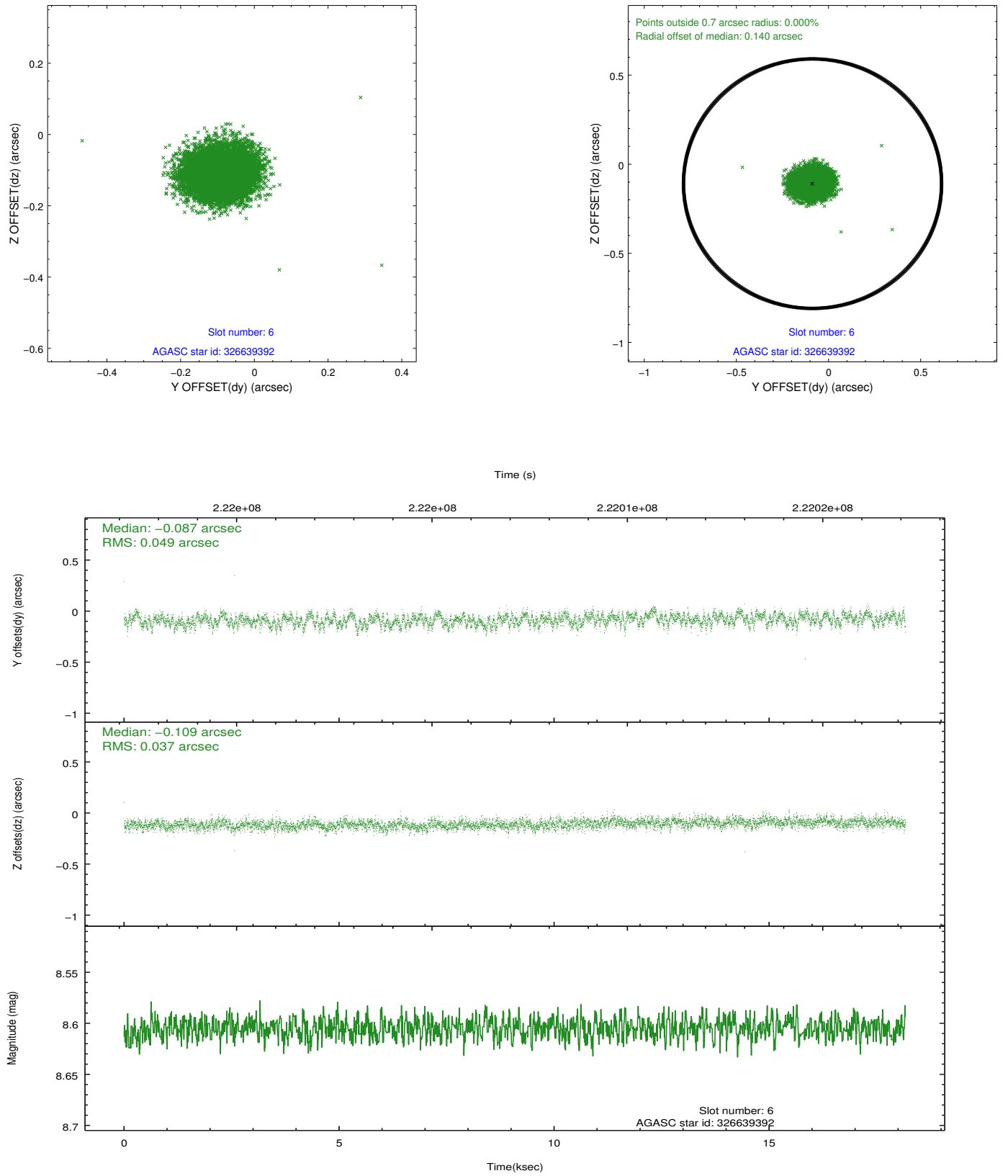
2.4.2 Slot 4



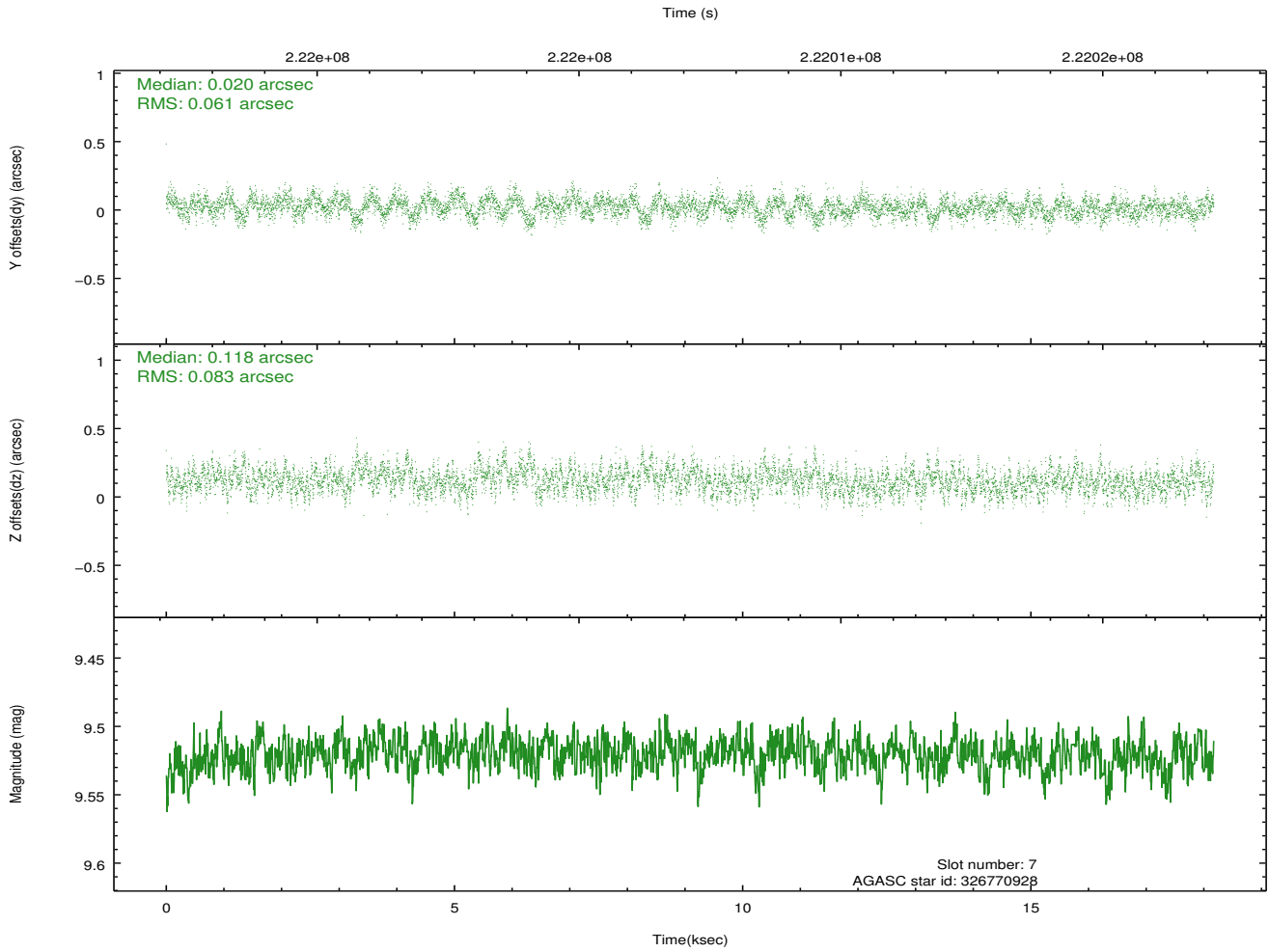
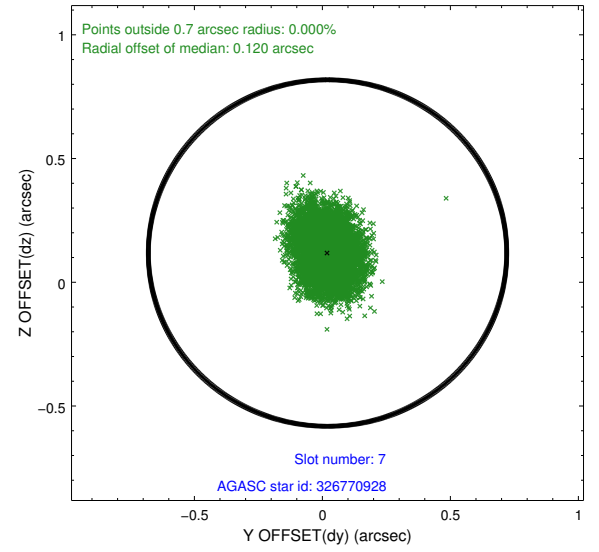
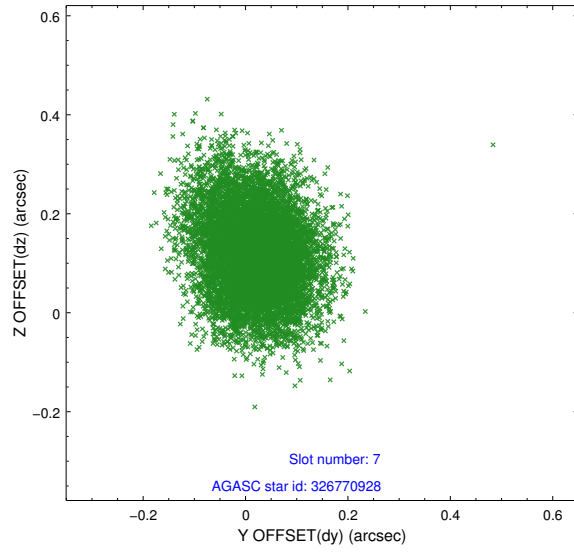
2.4.3 Slot 5



2.4.4 Slot 6

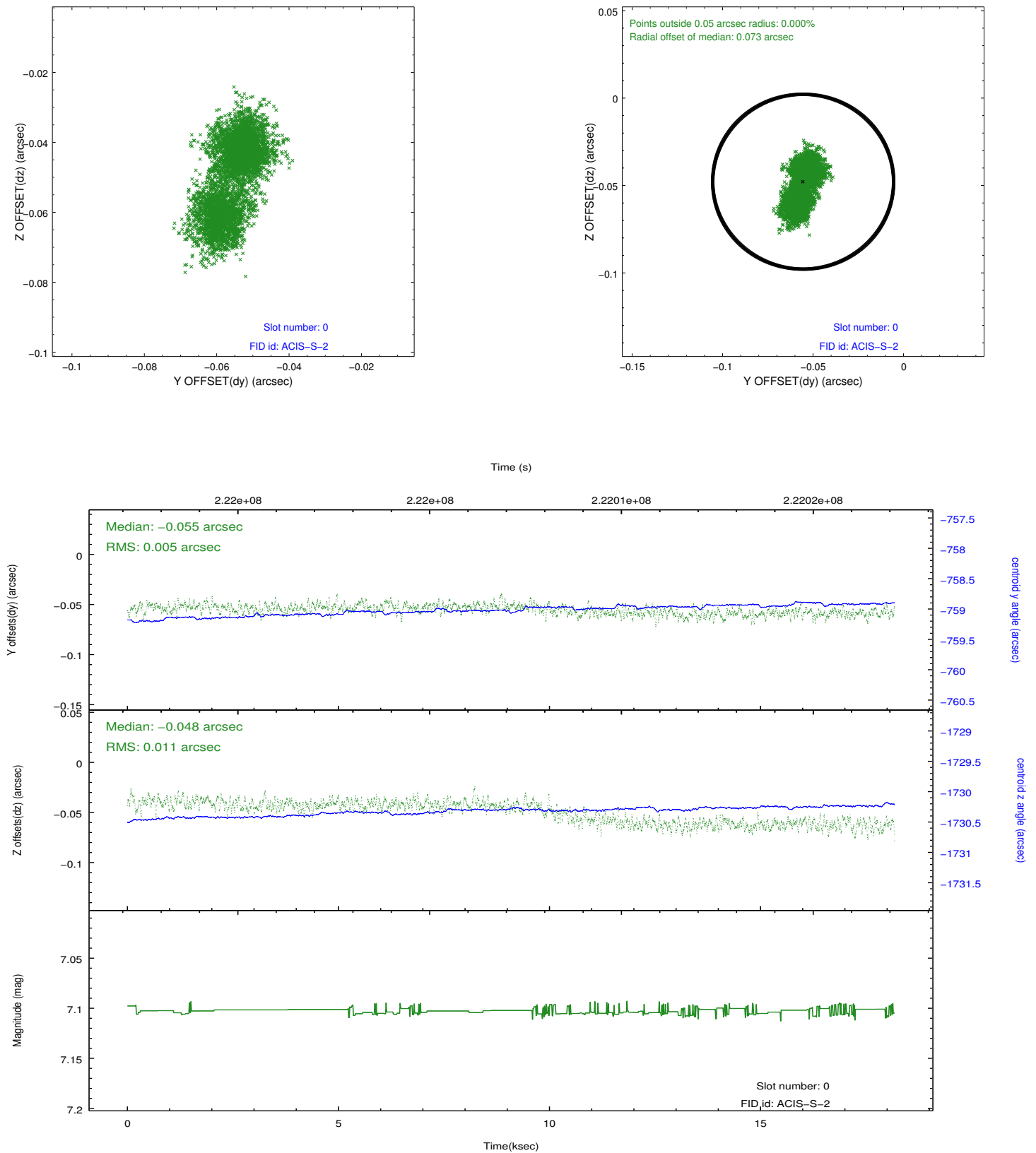


2.4.5 Slot 7

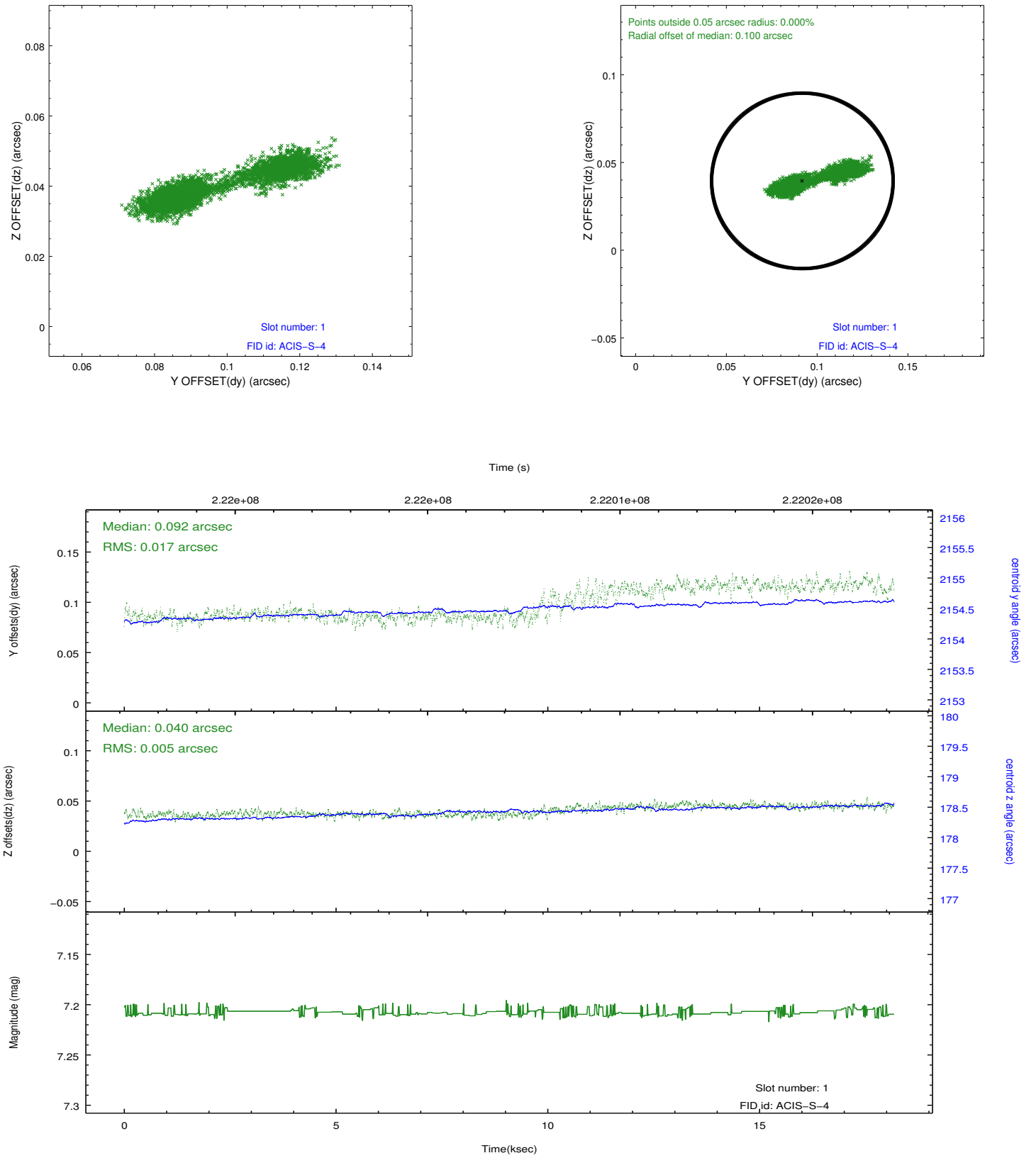


2.5 FID Slots

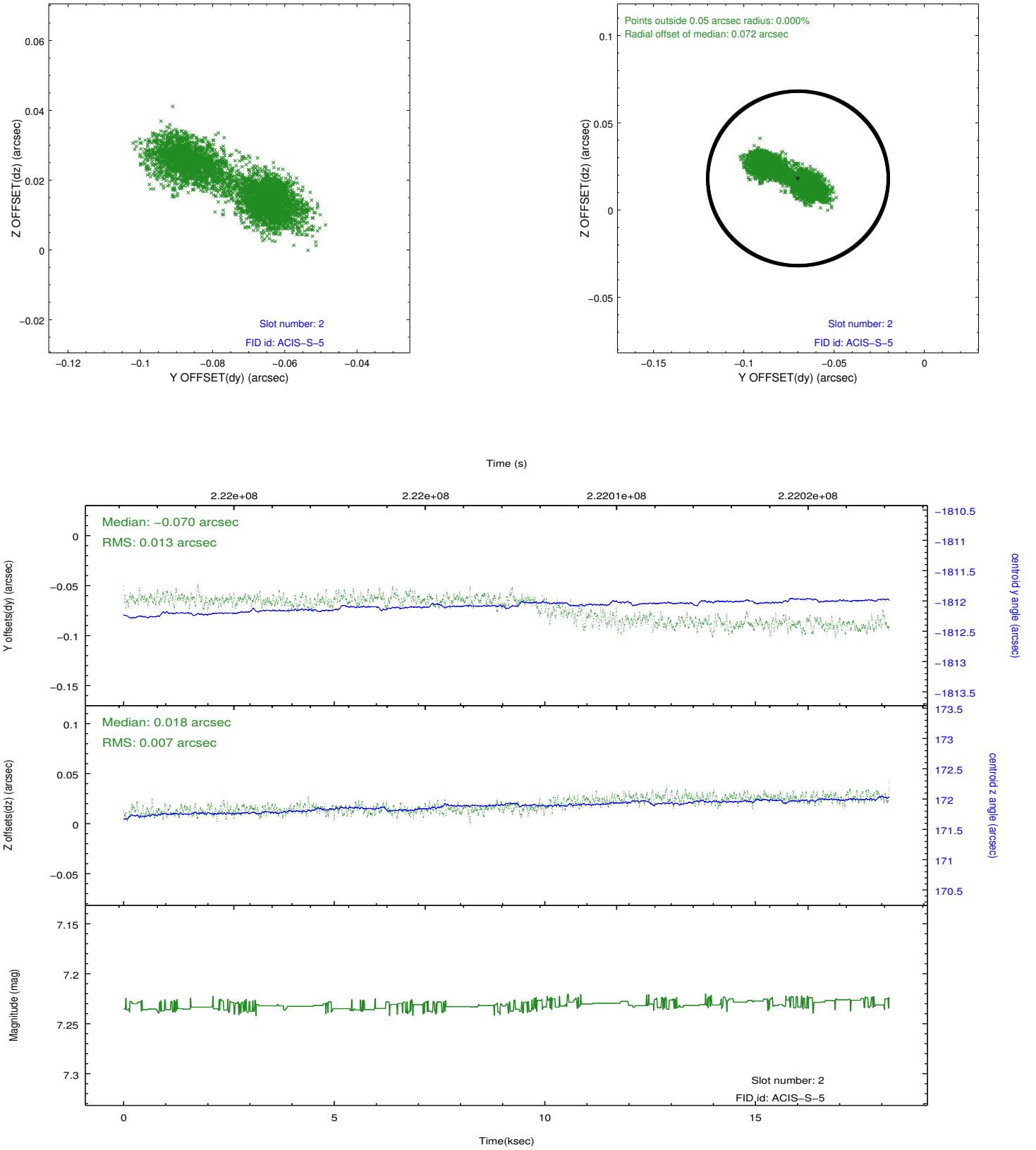
2.5.1 Slot 0



2.5.2 Slot 1



2.5.3 Slot 2



A Summary

A.1 Status

V&V Scientist	Beth Sundheim
V&V Date (YYYY-MM-DD)	2013.01.08
V&V Edition	1
V&V Disposition and Status	OK
V&V Charge Time	18.16909

A.2 Comments