

# V&V Reference Report

## L2 ASCDS Version : 7.6.7.1

Observation 5769 - L2 Version 002  
Chandra X-Ray Center

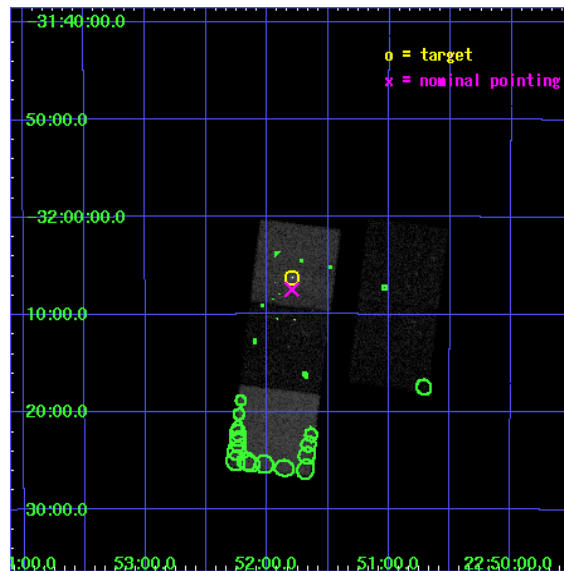
L2 Processing Date : Apr 7 2006

## Contents

<b>1</b>	<b>Front</b>	<b>2</b>
<b>2</b>	<b>OBI</b>	<b>3</b>
2.1	OBI . . . . .	3
2.1.1	Images . . . . .	3
2.1.2	Bias . . . . .	3
2.1.3	Parameters . . . . .	4
2.1.4	Events . . . . .	4
2.2	Compared Parameters . . . . .	5
2.3	Aspect . . . . .	6
2.4	Star Slots . . . . .	9
2.4.1	Slot 3 . . . . .	9
2.4.2	Slot 4 . . . . .	10
2.4.3	Slot 5 . . . . .	11
2.4.4	Slot 6 . . . . .	12
2.4.5	Slot 7 . . . . .	13
2.5	FID Slots . . . . .	14
2.5.1	Slot 0 . . . . .	14
2.5.2	Slot 1 . . . . .	15
2.5.3	Slot 2 . . . . .	16
<b>3</b>	<b>Point Sources</b>	<b>17</b>
<b>A</b>	<b>Summary</b>	<b>18</b>
A.1	Status . . . . .	18
A.2	Comments . . . . .	18

# 1 Front

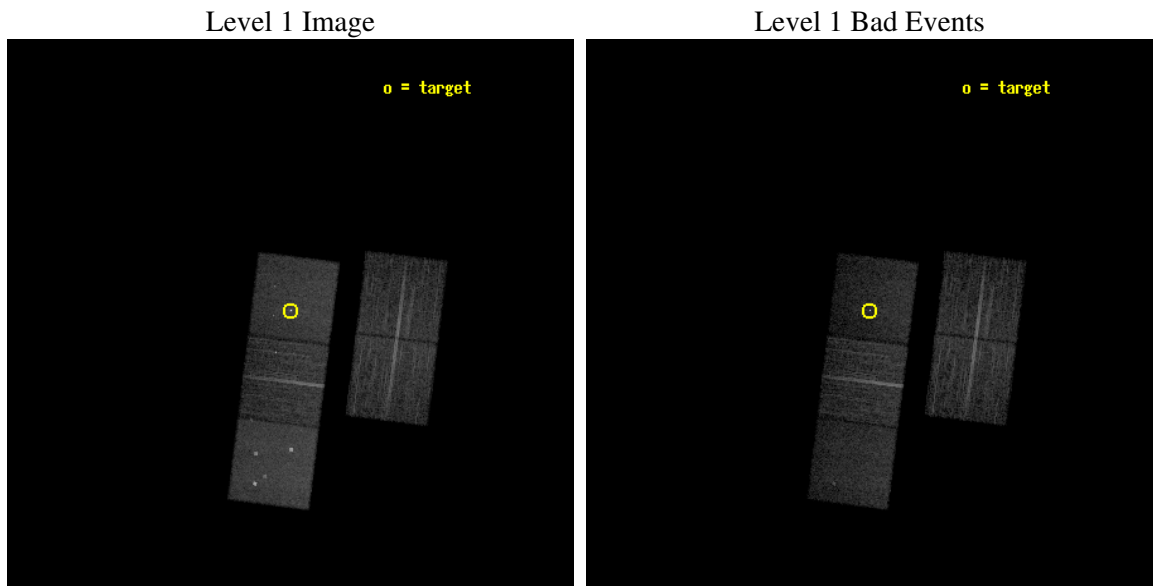
seq_num	800482
obs_id	5769
title	X-ray emission from clusters of galaxies from the REFLEX sample.
observer	Dr. Peter Predehl
object	RXCJ2251.7-3206
dtcycle	0
cycle	P
ra_targ	342.948333
dec_targ	-32.103389
ra_nom	342.94933456251
dec_nom	-32.124168091203
roll_nom	277.17924735256
revision	2
ontime	10422.199979961
livetime	10286.026264511
ontime2	10415.918079406
ontime3	10415.918029606
ontime5	10422.199979961
ontime6	10422.199979961
ontime7	10422.199979961
l2events	89187



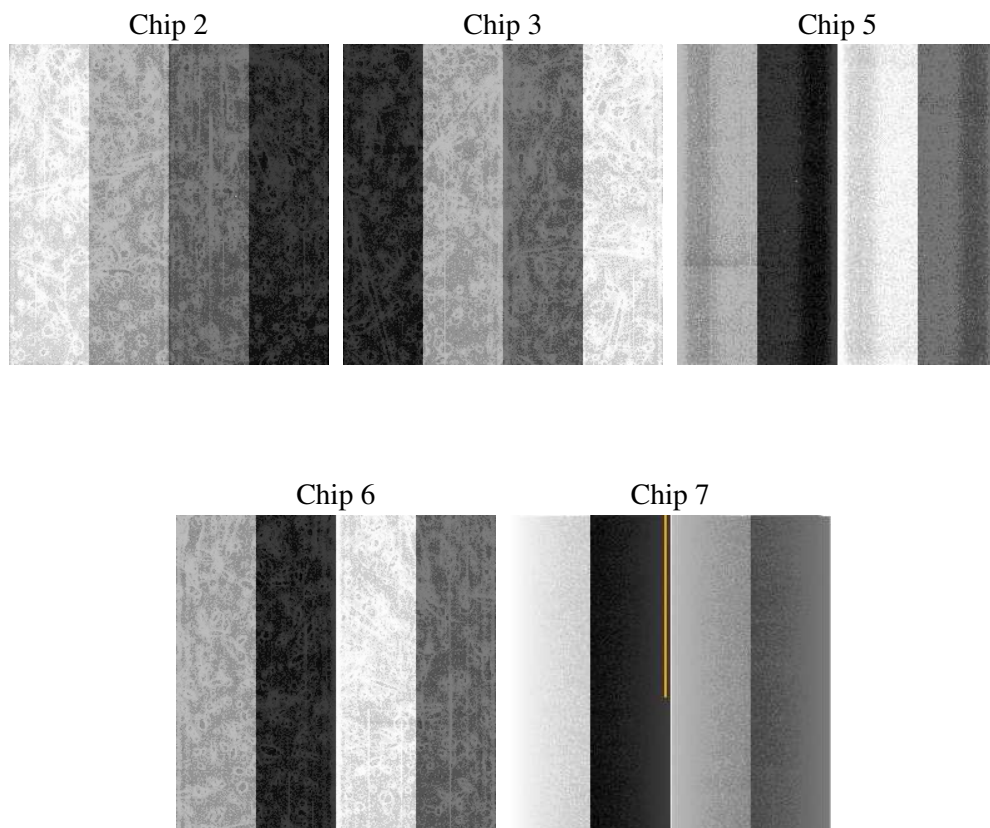
## 2 OBI

### 2.1 OBI

#### 2.1.1 Images



#### 2.1.2 Bias



### 2.1.3 Parameters

obi_num	0
ascdsver	7.6.7.1
caldsver	3.2.1
date	2006-04-07T17:19:05
revision	2

sched_exp_time	10238.261000
ontime	10902.416401535
ontime2	10896.13450098
ontime3	10896.134451181
ontime5	10902.416401535
ontime6	10902.416401535
ontime7	10902.416401535
llevents	385633

### 2.1.4 Events

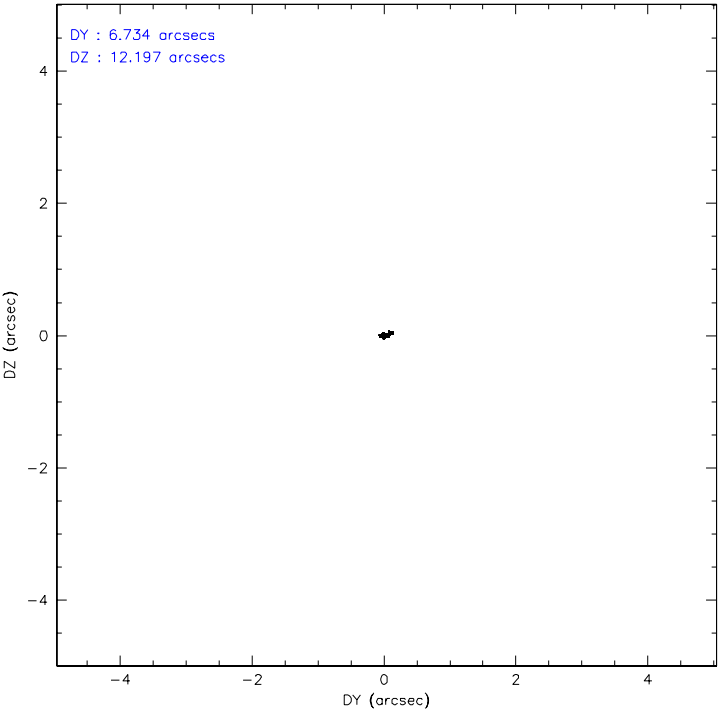
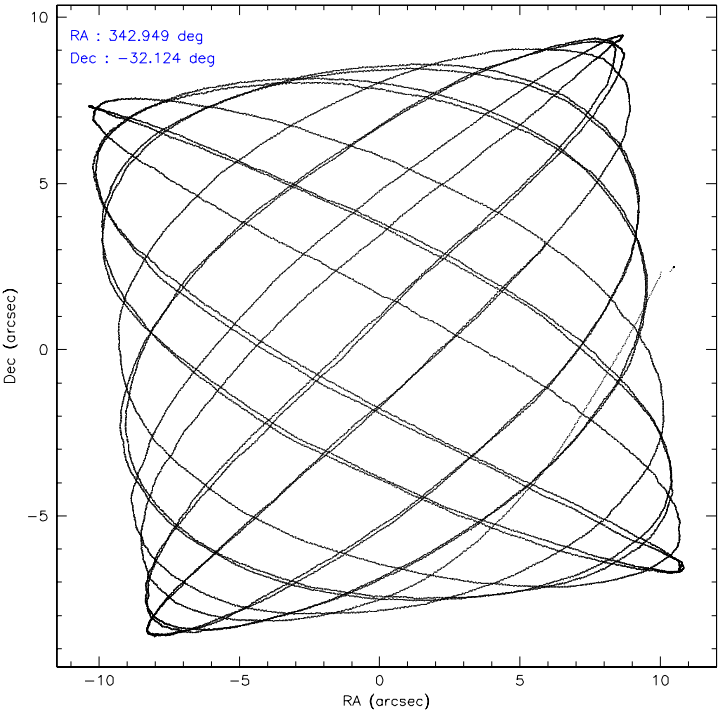
	ccd 2	ccd 3	ccd 5	ccd 6	ccd 7
level 1 events	71906	65388	96610	71260	80469
rejected events	65560	59349	50692	63567	47050
rejected %	91%	90%	52%	89%	58%

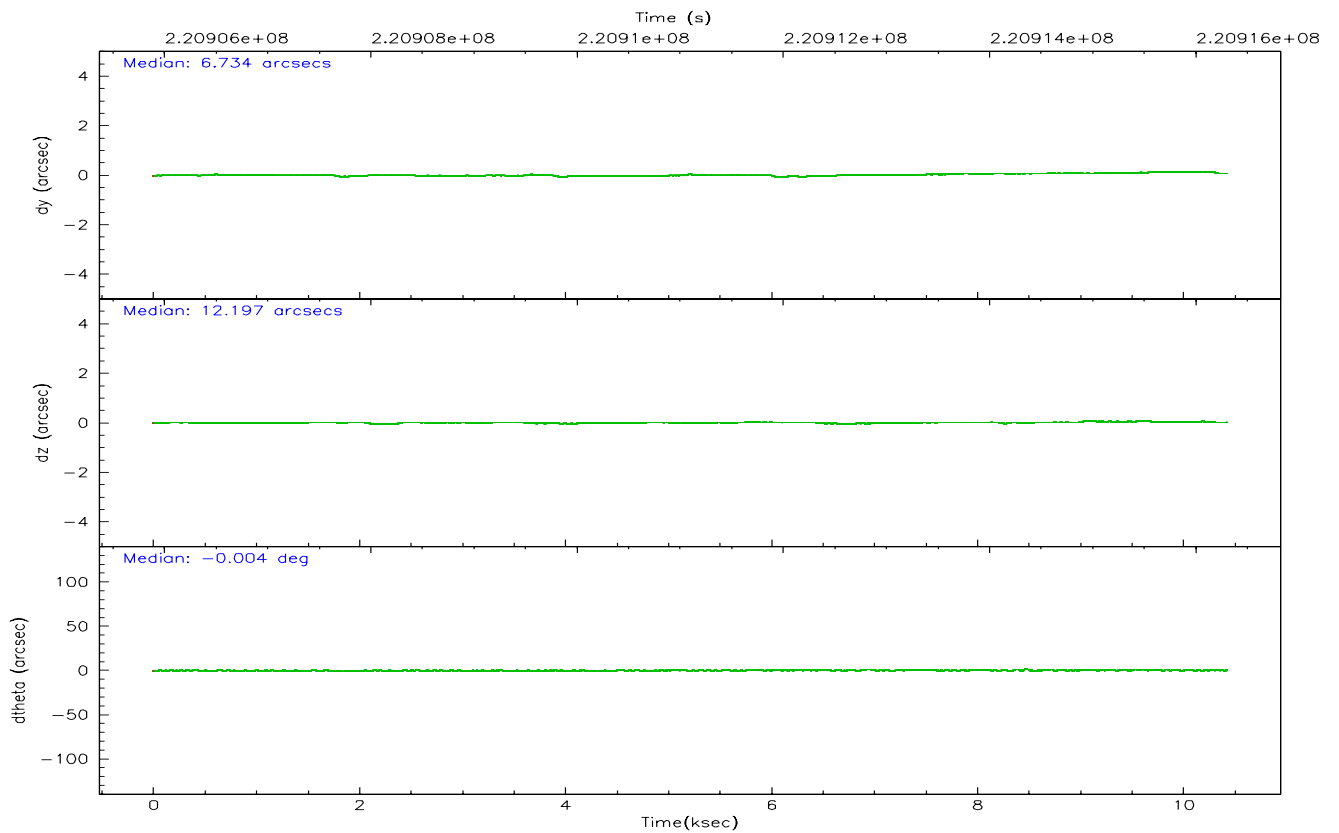
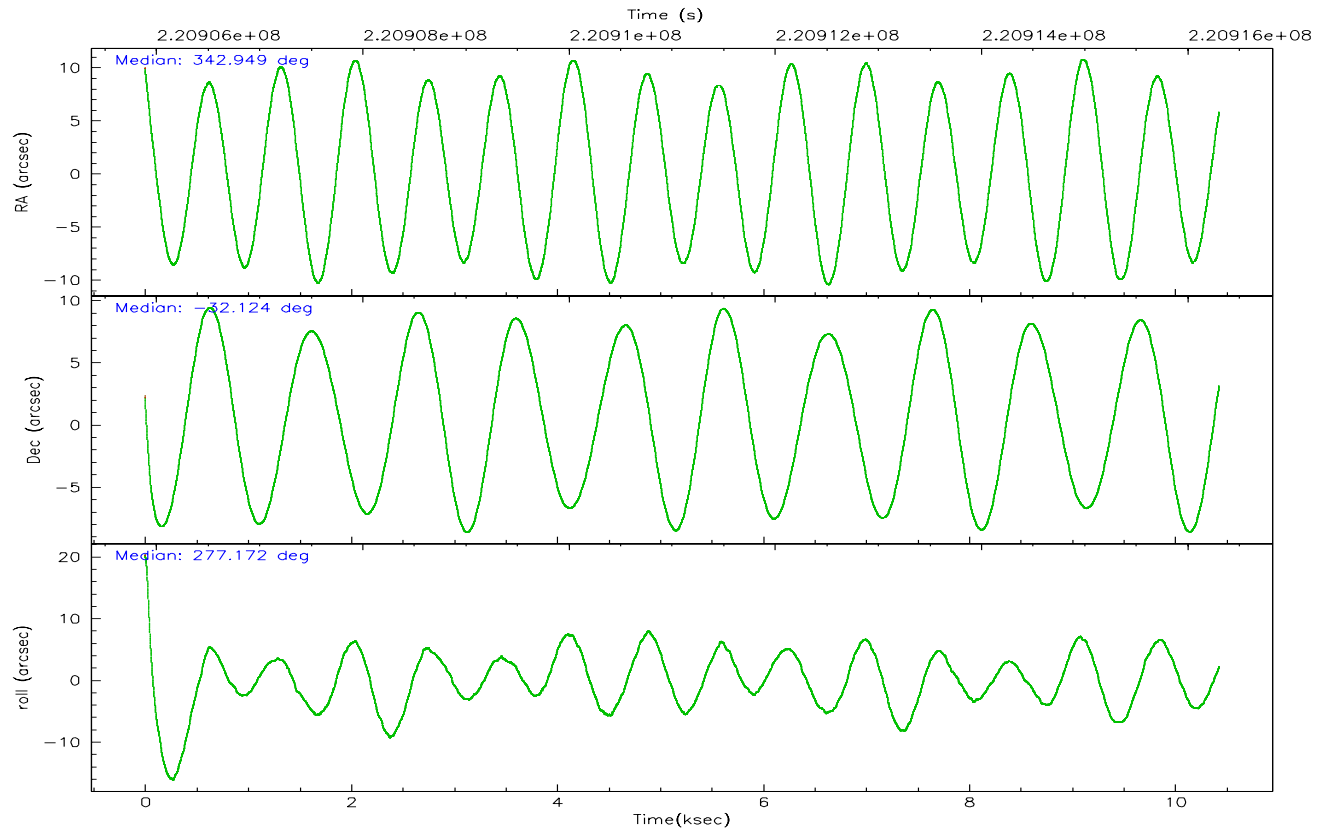
	ccd 2	ccd 3	ccd 5	ccd 6	ccd 7
grade 0 events	2377	2257	6228	3171	2653
	3%	3%	6%	4%	3%
grade 1 events	24	32	204	39	141
	0%	0%	0%	0%	0%
grade 2 events	1499	1347	14855	1579	8578
	2%	2%	15%	2%	10%
grade 3 events	736	727	1199	862	2082
	1%	1%	1%	1%	2%
grade 4 events	769	769	1088	803	2100
	1%	1%	1%	1%	2%
grade 5 events	2142	2514	4909	2788	6234
	2%	3%	5%	3%	7%
grade 6 events	1271	1211	24816	1618	19574
	1%	1%	25%	2%	24%
grade 7 events	63088	56531	43311	60400	39107
	87%	86%	44%	84%	48%

## 2.2 Compared Parameters

Parameter	Planned	Actual	Parameter	Planned	Actual
Instrument	ACIS	ACIS	Obspar format version number	6	6
Detector	ACIS-23567	ACIS-23567	Obspar file type	PREDICTED	ACTUAL
Grating	NONE	NONE	Obspar update status	NONE	UPDATED
Data mode	VFAINT	VFAINT	On-chip summing requested	N	N
Observation mode	POINTING	POINTING	Subarray requested	NONE	NONE
Pointing RA	342.929595	342.9493345625082	Alternating exposures requested	N	N
Pointing Dec	-32.102657	-32.12416809120277	Primary exposure time	0.000000	3.1
Pointing Roll	277.012105	277.1792473525571			
SIM focus pos (mm)	-0.684267	-0.6828225247311905			
SIM defocus (mm)	0	0.001444936568705701			
SIM translation stage pos (mm)	-190.132523	-190.1400660498719			
SIM translation stage offset (mm)	0	0.00754346686406393			
Observation start time	220906073.184000	220904833.6111			
Observation start date	2004-12-31T18:46:49	2004-12-31T18:27:13			
Observation end time	220916311.184000	220916526.29913			
Observation end date	2004-12-31T21:37:27	2004-12-31T21:42:06			
Read mode	TIMED	TIMED			

### 2.3 Aspect





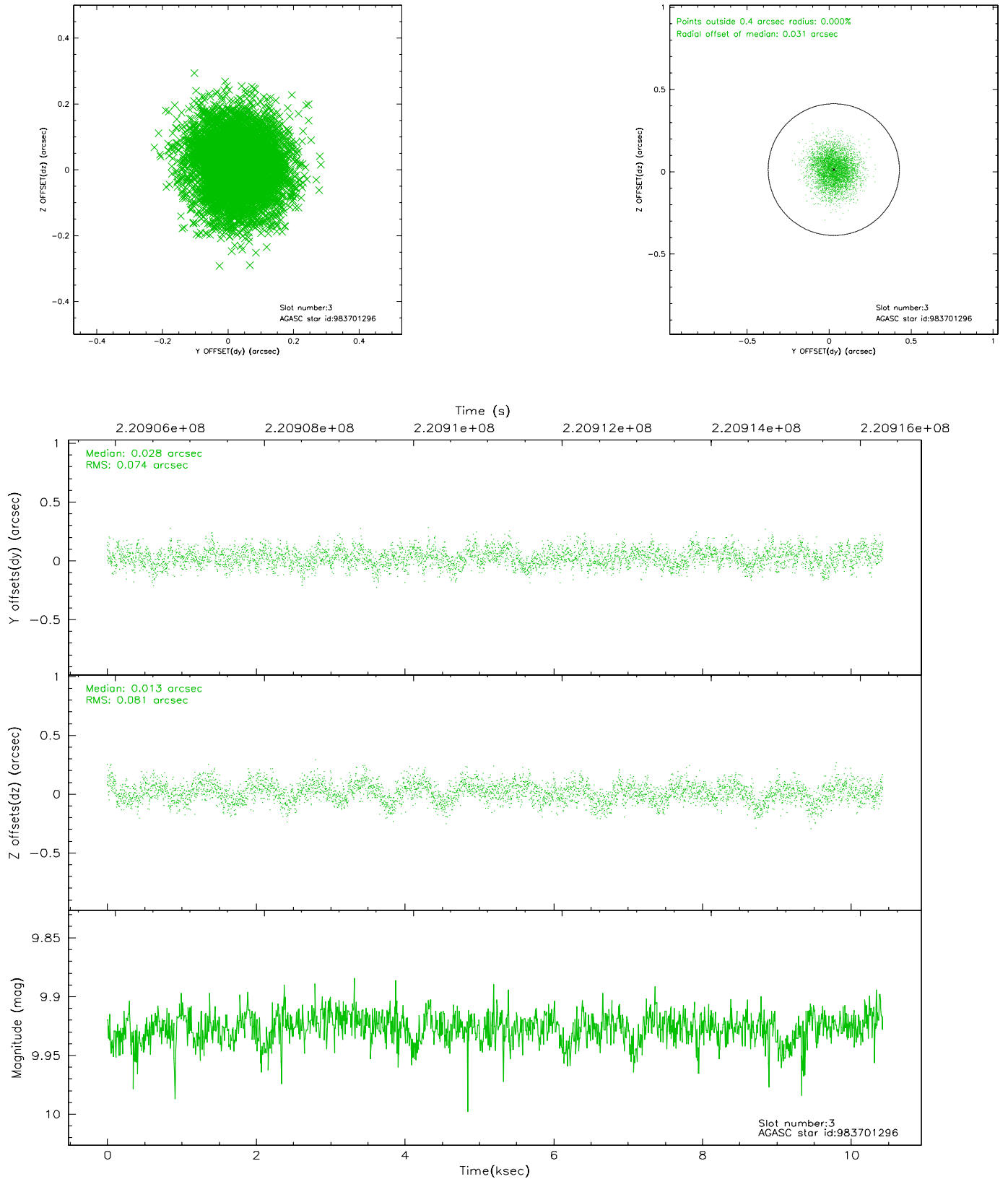
### Slot Statistics

slot	status	id	mag	n_pts	med_dy	med_dz	dr1	dr2	ra	dec	mean_y	mean_z
0	FID	ACIS-S-1	7.19	2544	0.019	-0.058	0.011	0.017	0.000000	0.000000	936.51	-1729.22
1	FID	ACIS-S-4	7.20	2544	0.005	0.035	0.015	0.021	0.000000	0.000000	2154.23	174.49
2	FID	ACIS-S-5	7.23	2544	-0.052	0.035	0.016	0.024	0.000000	0.000000	-1811.74	168.74
3	GUIDE	983701296	9.93	5081	0.028	0.013	0.117	0.188	343.446048	-32.388884	1218.19	1432.35
4	GUIDE	983701760	8.70	5088	-0.161	0.015	0.072	0.116	342.575335	-31.830317	-1102.81	-955.16
5	GUIDE	983703872	8.76	5086	-0.005	0.056	0.090	0.134	342.723807	-32.488548	1303.27	-789.67
6	GUIDE	983704680	9.35	5080	-0.009	0.033	0.086	0.140	343.270612	-32.443271	1345.50	878.64
7	GUIDE	984089048	9.03	5084	0.147	-0.113	0.088	0.144	342.300577	-32.750637	2089.11	-2175.06

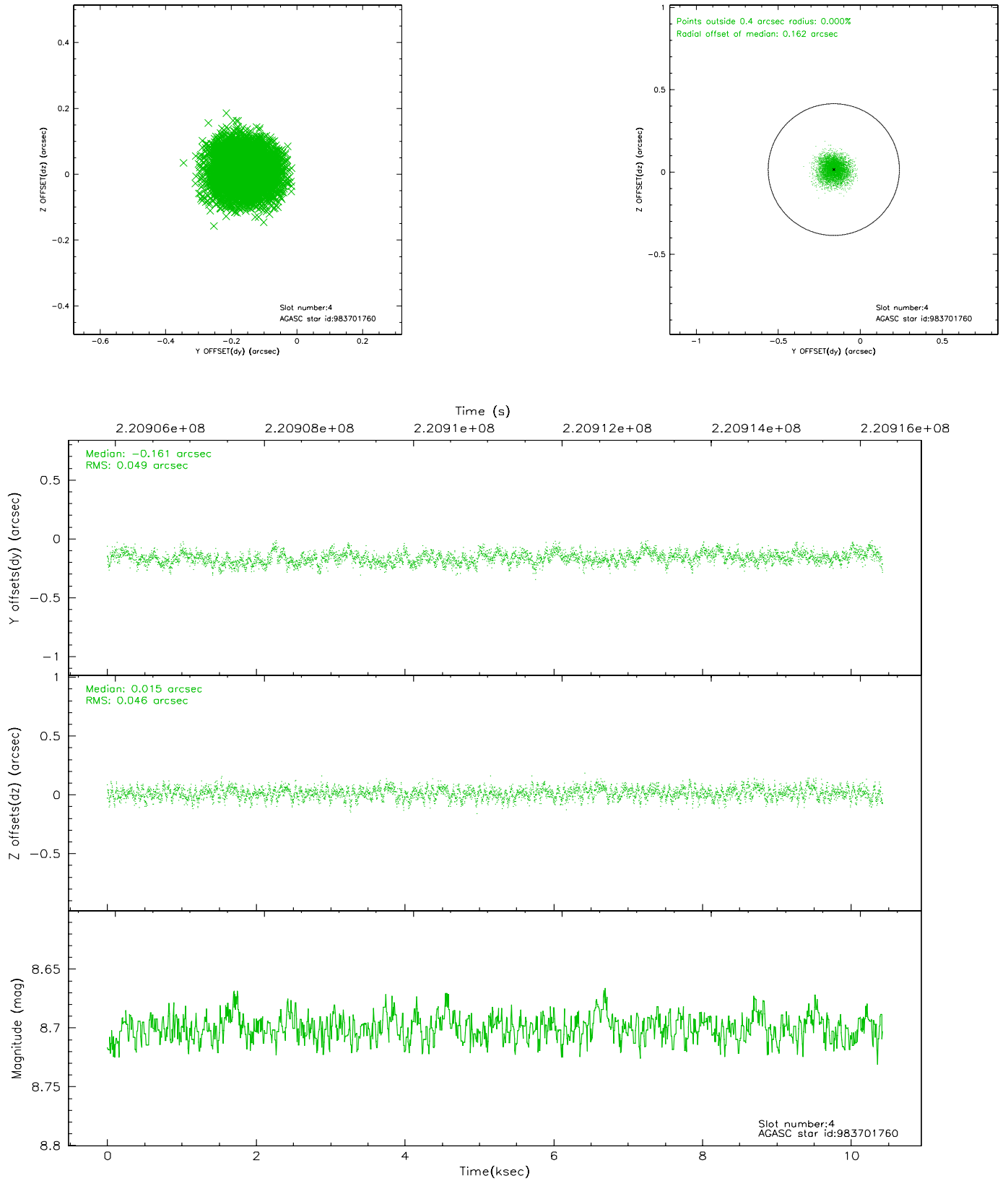


## 2.4 Star Slots

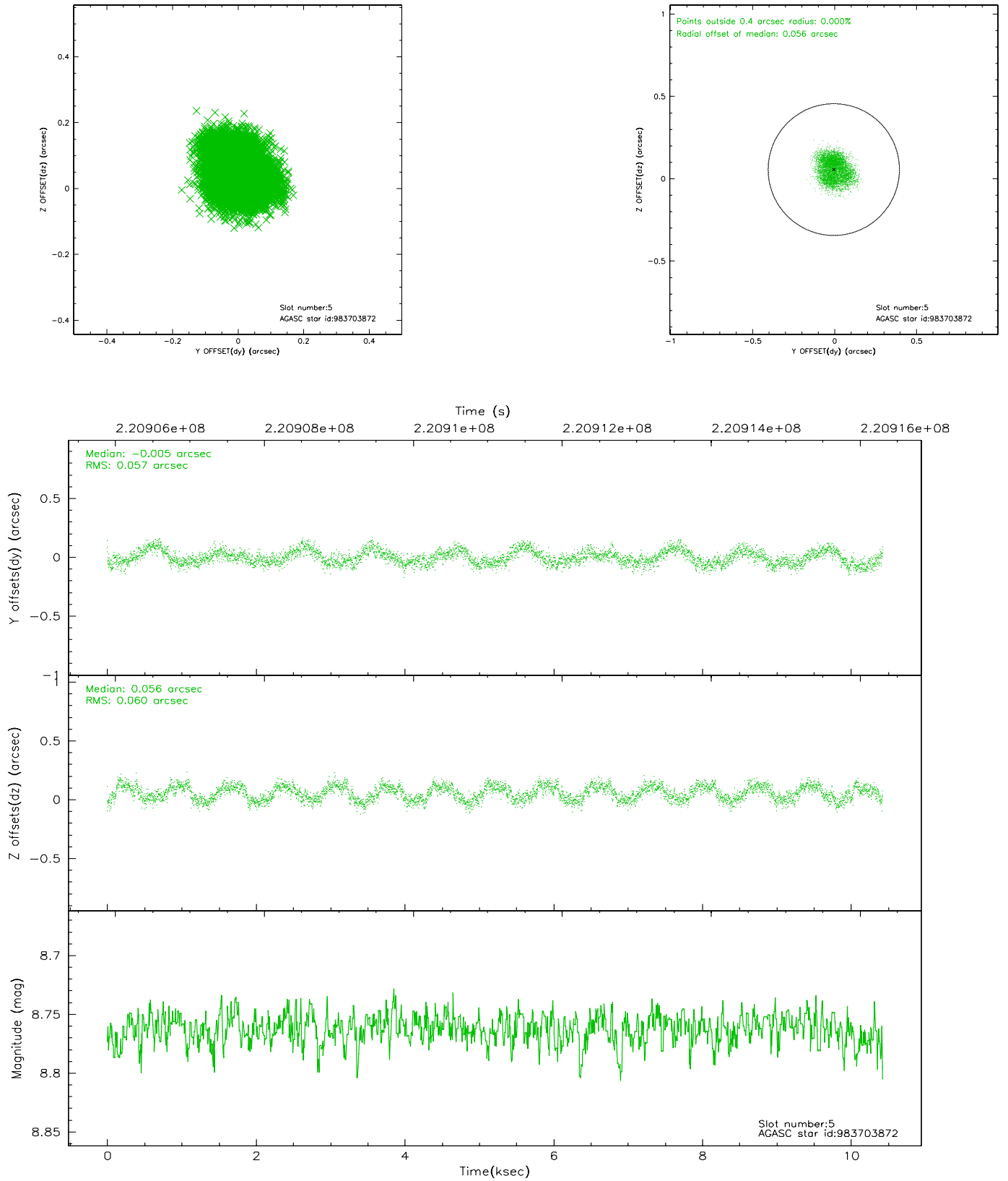
### 2.4.1 Slot 3



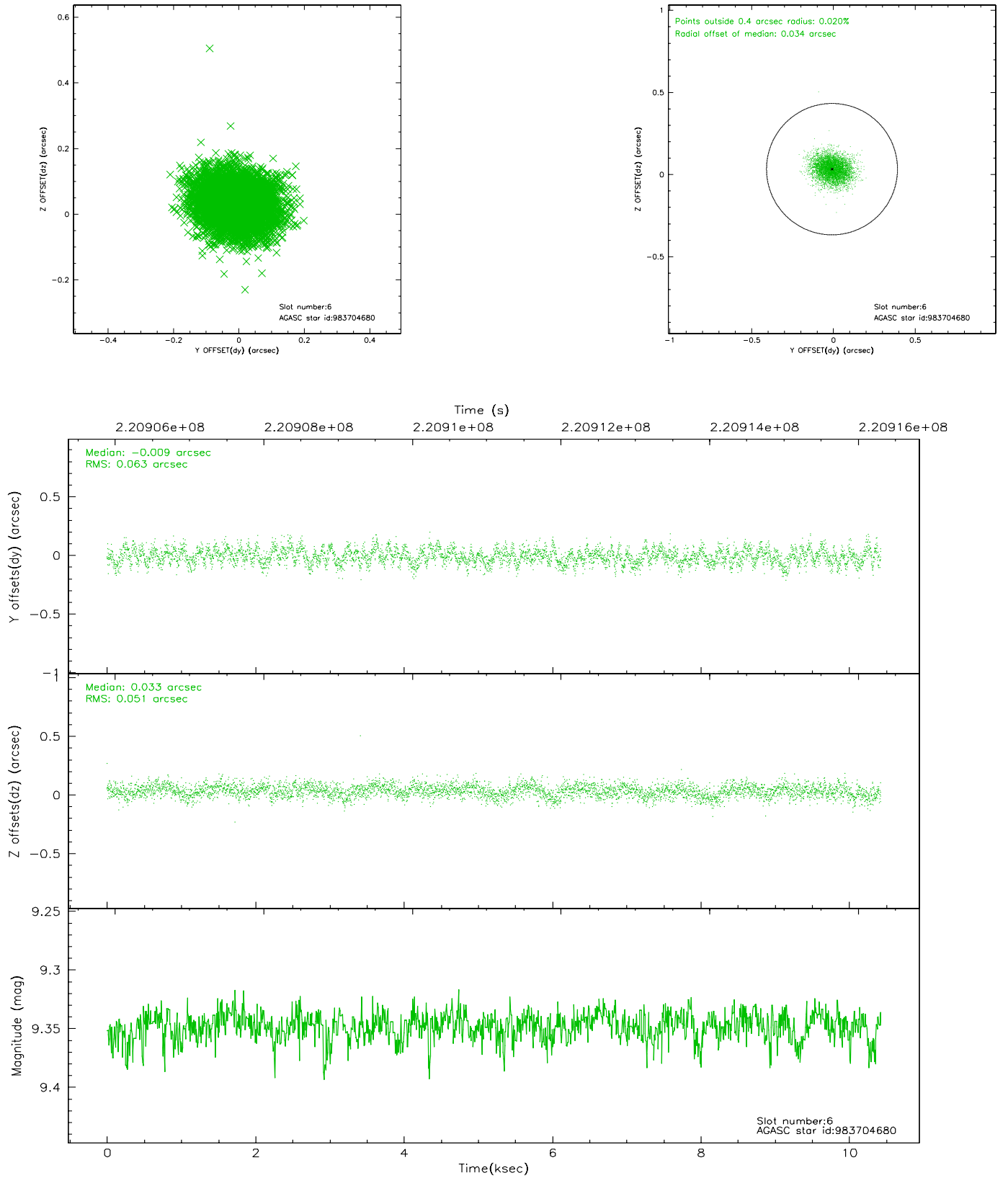
## 2.4.2 Slot 4



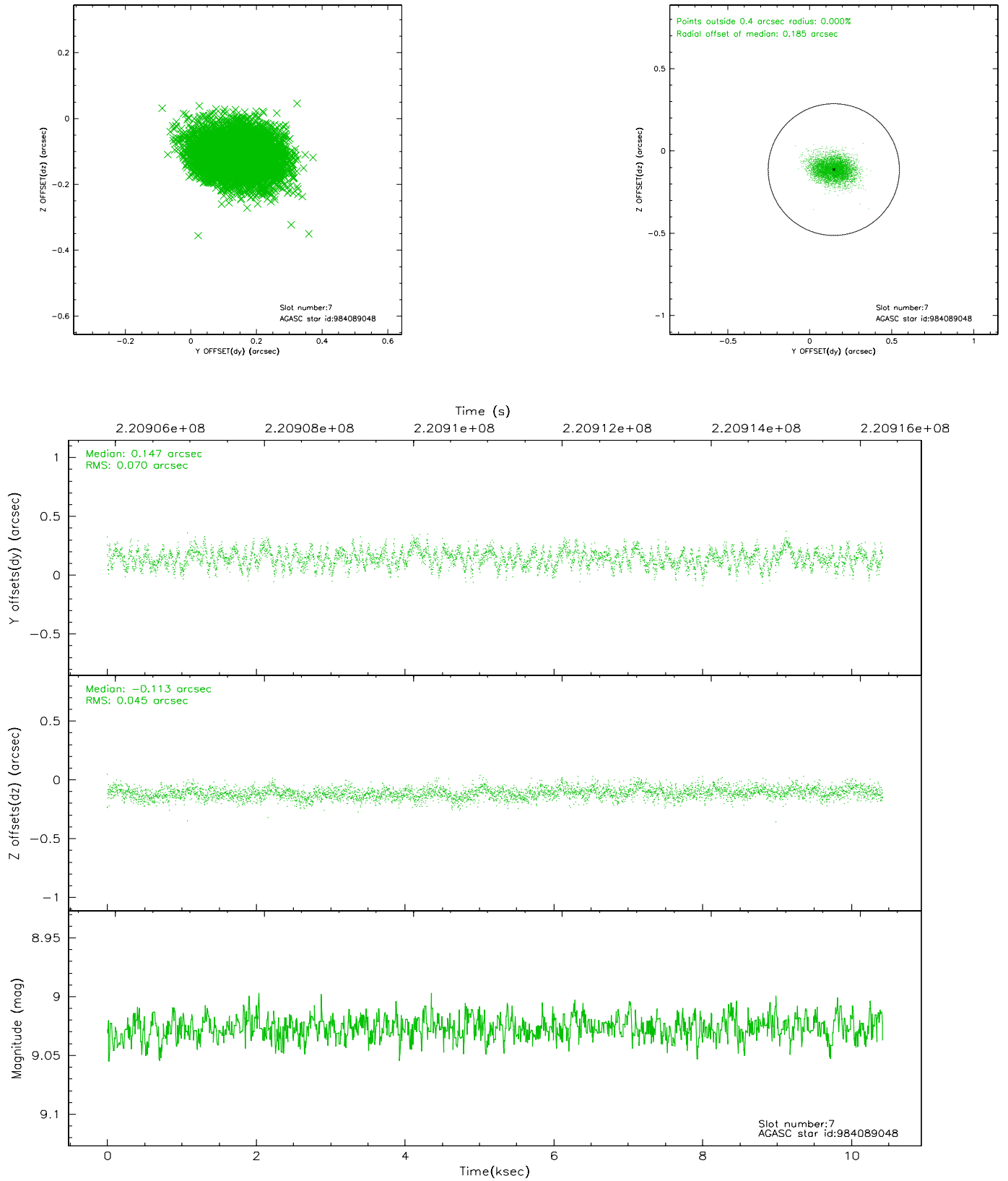
### 2.4.3 Slot 5



## 2.4.4 Slot 6

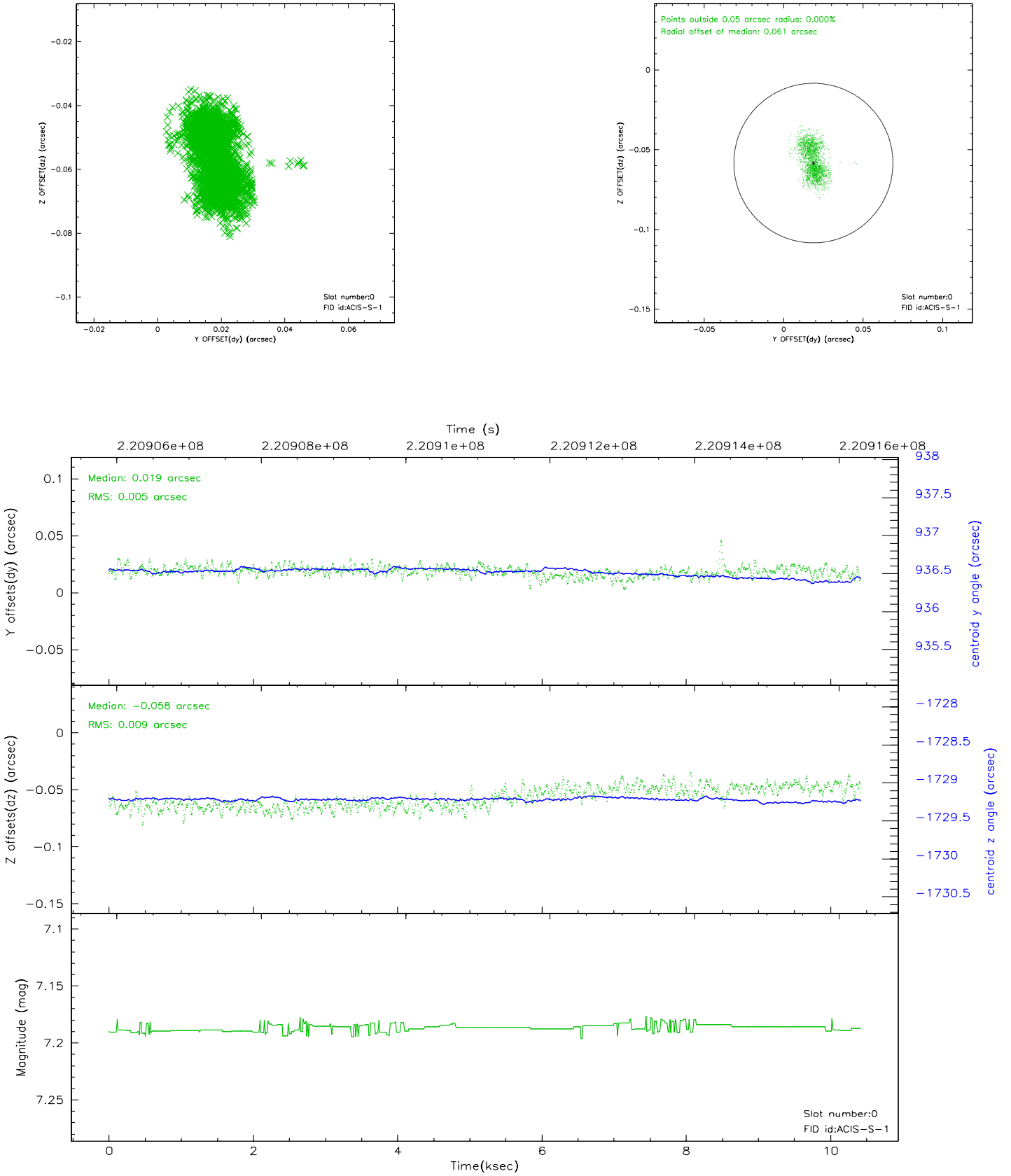


## 2.4.5 Slot 7

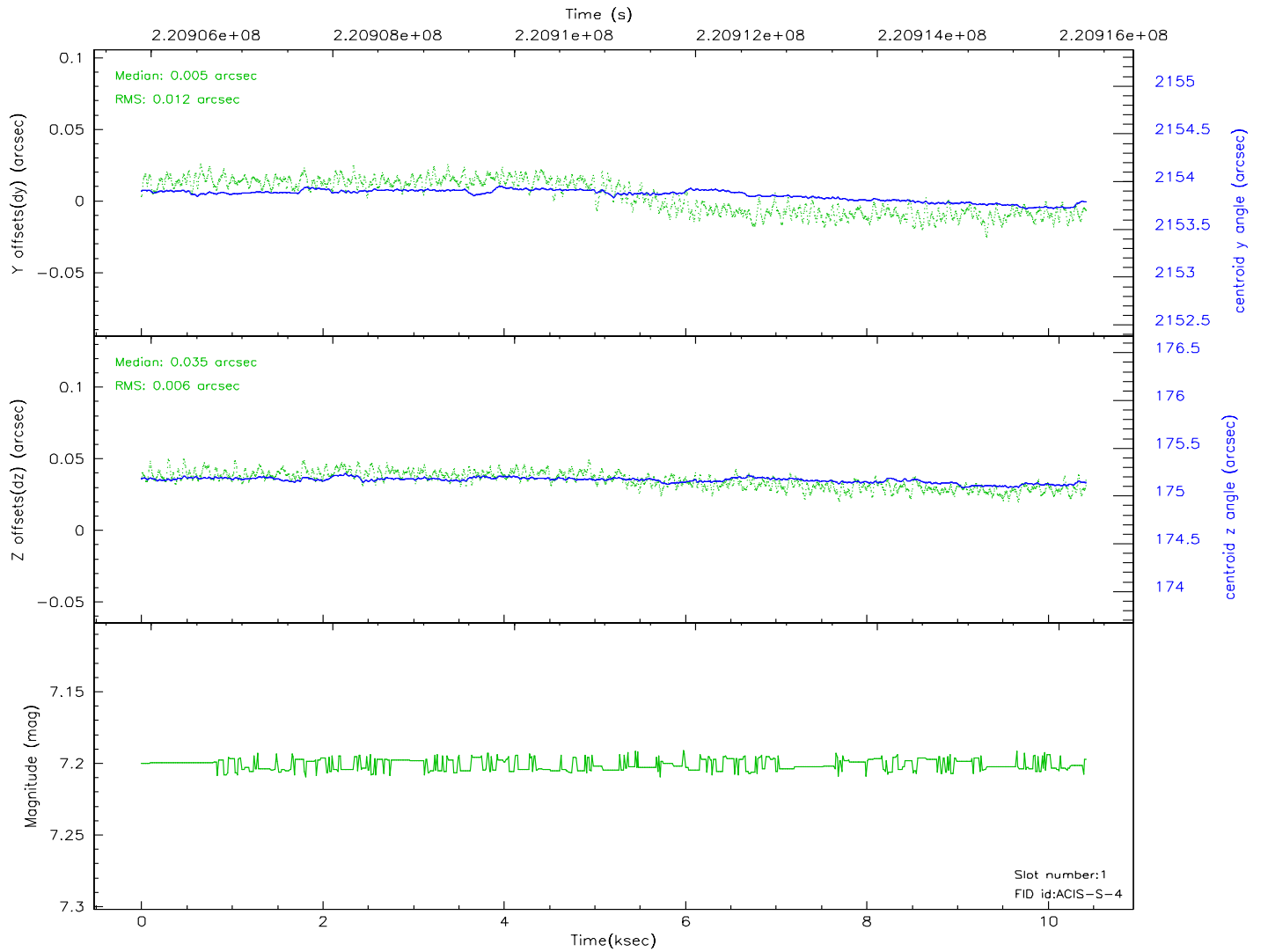
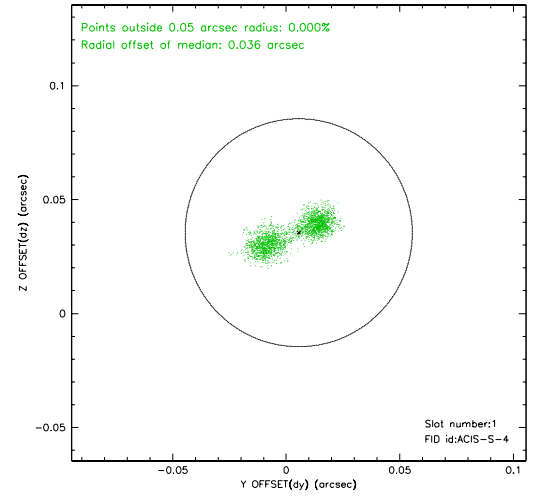
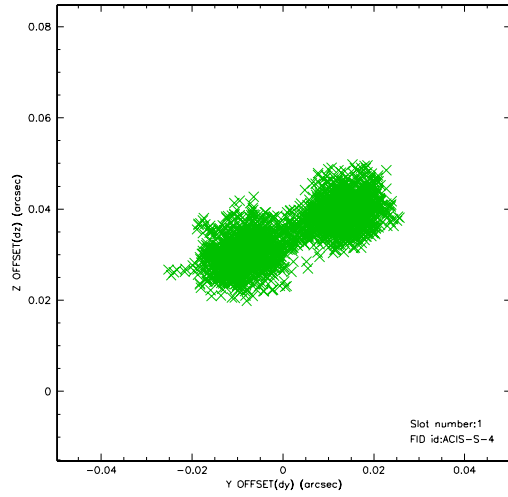


## 2.5 FID Slots

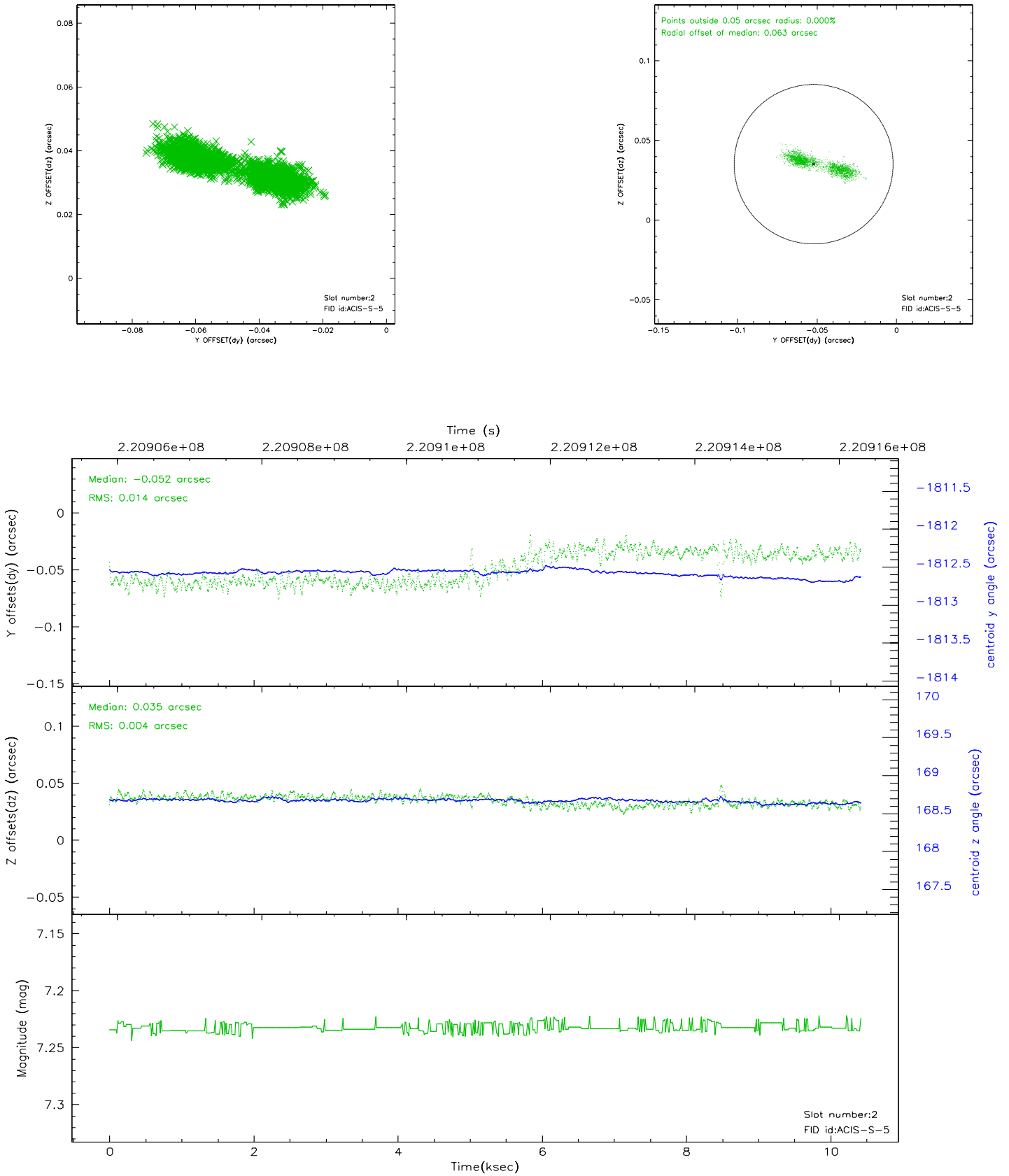
### 2.5.1 Slot 0



## 2.5.2 Slot 1

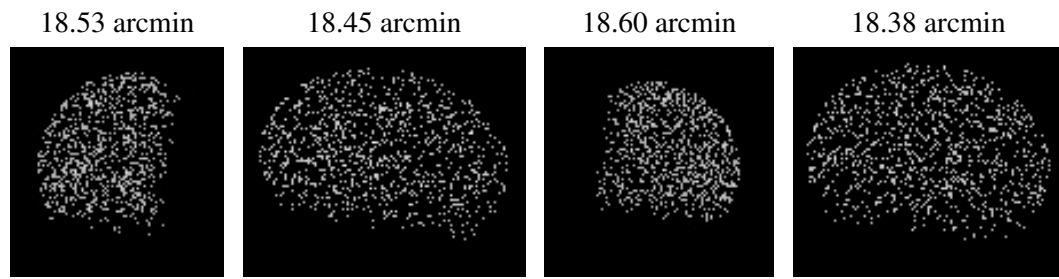


### 2.5.3 Slot 2





### 3 Point Sources



## A Summary

### A.1 Status

V&V Scientist	Beth Sundheim
V&V Date (YYYY-MM-DD)	2006.04.07
V&V Edition	1
V&V Disposition and Status	OK
V&V Charge Time	10.42219

### A.2 Comments