

V&V Reference Report

L2 ASCDS Version : 8.4.4

Observation 57619 - L2 Version 2
Chandra X-Ray Center

L2 Processing Date : May 20 2012

Contents

1	Front	2
2	OBI	3
2.1	OBI	3
2.1.1	Images	3
2.1.2	Bias	3
2.1.3	Parameters	4
2.1.4	Events	4
2.2	Compared Parameters	5
2.3	Star Slots	6
2.4	FID Slots	6
A	Summary	7
A.1	Status	7
A.2	Comments	7

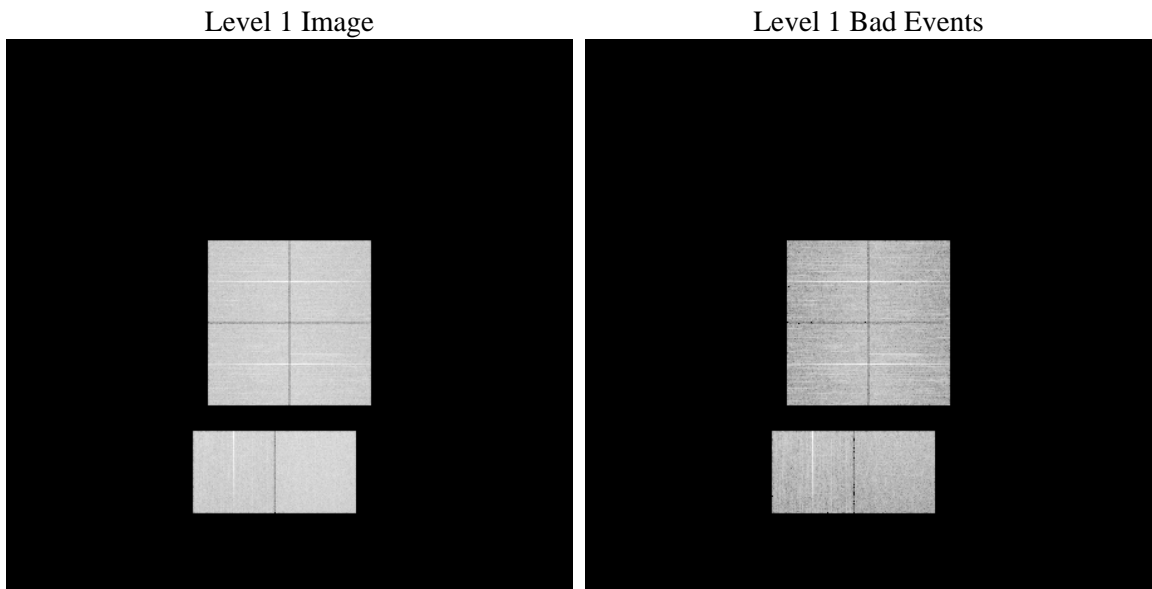
1 Front

seq_num	 	Sequence number
obs_id	57619	Observation id
title	ACIS-012367 diagnostics	Proposal title
observer	CHANDRA engineering request/realtime commanding	Principal investig
object	 	Source name
dtcycle	0	
cycle	P	events from which exps? Prim/Second/Both
ra_targ	0.0	Observer's specified target RA [deg]
dec_targ	0.0	Observer's specified target Dec [deg]
ra_nom	332.63242572543	Nominal RA [deg]
dec_nom	-27.798765995935	Nominal Dec [deg]
roll_nom	329.62098581632	Nominal Roll [deg]
revision	2	Processing version of data
ontime	8255.9999693036	Sum of GTIs [s]
livetime	8151.4575265259	Livetime [s]
ontime0	8255.9999693036	Sum of GTIs [s]
ontime1	8255.9999693036	Sum of GTIs [s]
ontime2	8255.9999693036	Sum of GTIs [s]
ontime3	8255.9999693036	Sum of GTIs [s]
ontime6	8255.9999693036	Sum of GTIs [s]
ontime7	8255.9999693036	Sum of GTIs [s]
l2events	567019	Number of level 2 events

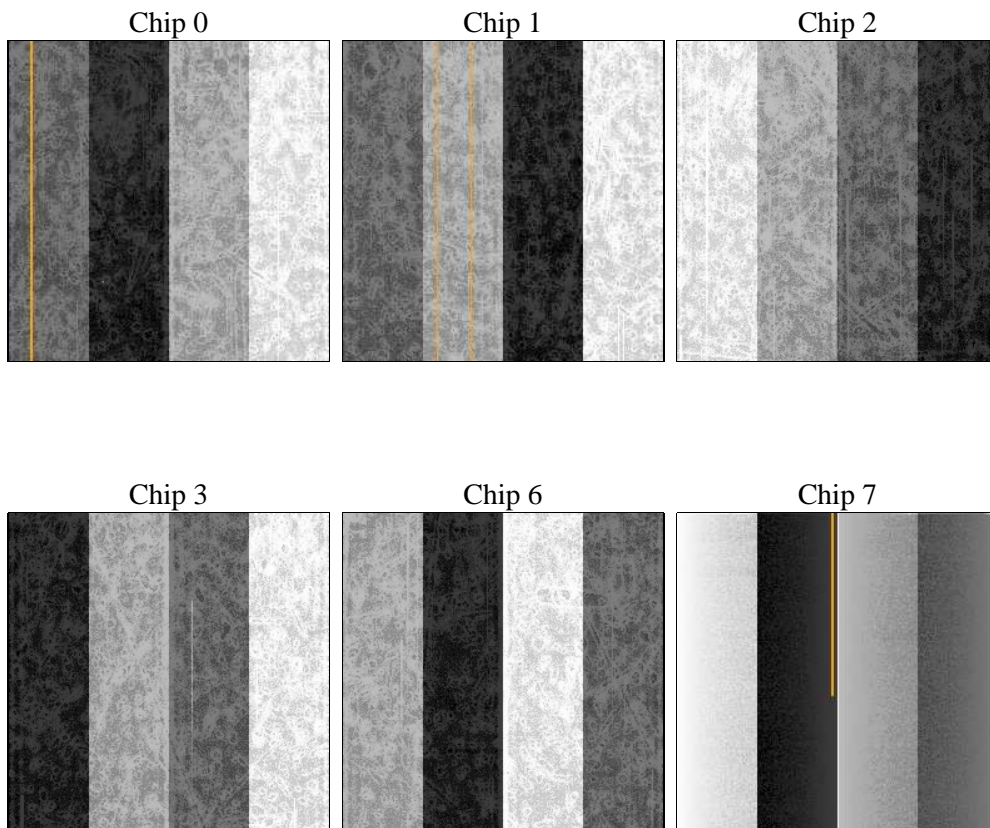
2 OBI

2.1 OBI

2.1.1 Images



2.1.2 Bias



2.1.3 Parameters

obi_num	0	Obi number	sched_exp_time	0.0	[s] Scheduled observation exposure time
ascdsver	8.4.4	Processing system revision	ontime	8255.9999693036	Sum of GTIs [s]
caldsver	4.4.9	 	ontime0	8255.9999693036	Sum of GTIs [s]
date	2012-05-21T00:21:22	Date and time of file creation	ontime1	8255.9999693036	Sum of GTIs [s]
revision	2	Processing version of data	ontime2	8255.9999693036	Sum of GTIs [s]
			ontime3	8255.9999693036	Sum of GTIs [s]
			ontime6	8255.9999693036	Sum of GTIs [s]
			ontime7	8255.9999693036	Sum of GTIs [s]
			l1events	1024323	Number of level 1 events

2.1.4 Events

	ccd 0	ccd 1	ccd 2	ccd 3	ccd 6	ccd 7		ccd 0	ccd 1	ccd 2	ccd 3	ccd 6	ccd 7
level 1 events	161769	162049	165419	168801	171320	194965	grade 0 events	49865	49346	51367	51589	51078	25412
rejected events	68978	68741	72050	74771	74564	66790		30%	30%	31%	30%	29%	13%
rejected %	42%	42%	43%	44%	43%	34%	grade 1 events	363	314	373	419	294	139
								0%	0%	0%	0%	0%	0%
							grade 2 events	16559	17379	16152	16183	17278	28251
								10%	10%	9%	9%	10%	14%
							grade 3 events	6251	6117	6286	6415	6229	11962
								3%	3%	3%	3%	3%	6%
							grade 4 events	6203	6171	6216	6348	6202	11903
								3%	3%	3%	3%	3%	6%
							grade 5 events	3880	4159	3666	4415	4203	10875
								2%	2%	2%	2%	2%	5%
							grade 6 events	14139	14578	13614	13714	16261	50943
								8%	8%	8%	8%	9%	26%
							grade 7 events	64509	63985	67745	69718	69775	55480
								39%	39%	40%	41%	40%	28%

2.2 Compared Parameters

Parameter	Planned	Actual	Parameter	Planned	Actual
Instrument	ACIS	ACIS	Obspar format version number	7	7
Detector	ACIS-012367	ACIS-012367	Obspar file type	PREDICTED	ACTUAL
Grating	NONE	NONE	Obspar update status	NONE	UPDATED
Data mode	FAINT	FAINT	Number of optional ACIS chips dropped	0	0
Observation mode	SECONDARY	SECONDARY	On-chip summing requested	N	N
[deg] Pointing RA	0	332.6324257254267	Subarray requested	NONE	NONE
[deg] Pointing Dec	0	-27.79876599593467	Alternating exposures requested	N	N
[deg] Pointing Roll	0.0	329.6209858163208	[s] Primary exposure time	3.2	3.2
[mm] SIM focus pos	-1.429586	-0.6828225247311905			
[mm] SIM defocus	0.1037507710433287	0.8505141146731063			
[mm] SIM translation stage pos	250.455976	250.466033080201			
[mm] SIM translation stage offset	0	-0.01005468664627074			
[s] Observation start time (MET)	337013739.772538	337013738.74753			
Observation start date	2008-09-05T14:55:40	2008-09-05T14:55:38			
[s] Observation end time (MET)	337036103.223637	337036102.19863			
Observation end date	2008-09-05T21:08:23	2008-09-05T21:08:22			
Read mode	TIMED	TIMED			

2.3 Star Slots

2.4 FID Slots

A Summary

A.1 Status

V&V Scientist	Beth Sundheim
V&V Date (YYYY-MM-DD)	2012.05.29
V&V Edition	1
V&V Disposition and Status	OK
V&V Charge Time	8.2559999693036

A.2 Comments