

V&V Reference Report

L2 ASCDS Version : 8.4.4

Observation 57199 - L2 Version 2
Chandra X-Ray Center

L2 Processing Date : Jun 3 2012

Contents

1	Front	2
2	OBI	3
2.1	OBI	3
2.1.1	Images	3
2.1.2	Bias	3
2.1.3	Parameters	4
2.1.4	Events	4
2.2	Compared Parameters	5
2.3	Star Slots	6
2.4	FID Slots	6
A	Summary	7
A.1	Status	7
A.2	Comments	7

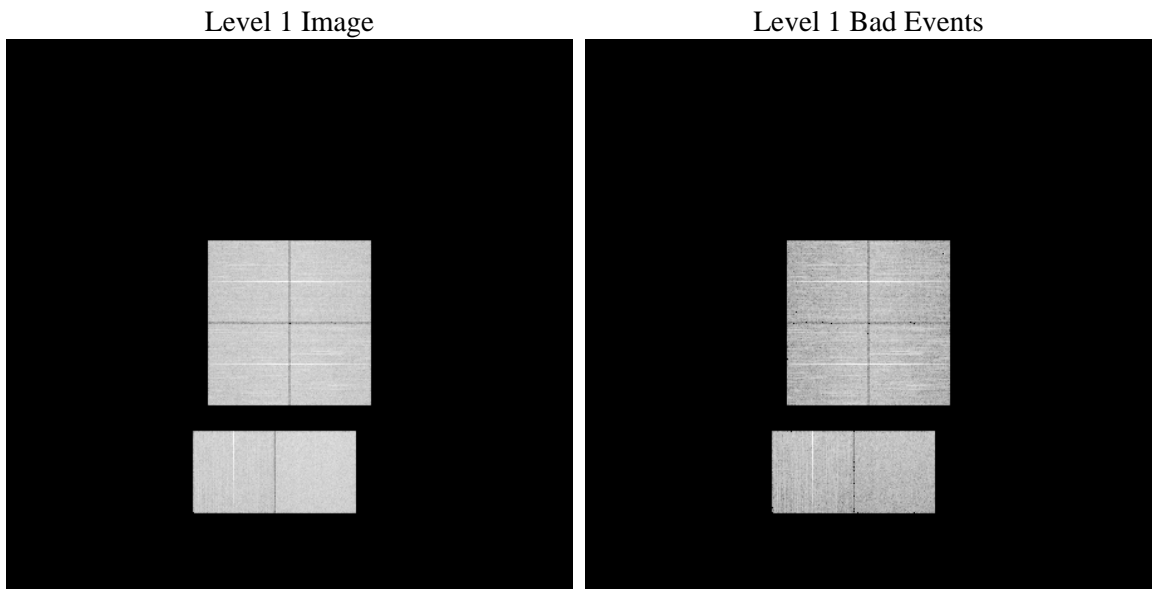
1 Front

seq_num	 	Sequence number
obs_id	57199	Observation id
title	ACIS-012367 diagnostics	Proposal title
observer	CHANDRA engineering request/realtime commanding	Principal investig
object	 	Source name
dtcycle	0	
cycle	P	events from which exps? Prim/Second/Both
ra_targ	0.0	Observer's specified target RA [deg]
dec_targ	0.0	Observer's specified target Dec [deg]
ra_nom	208.95890586475	Nominal RA [deg]
dec_nom	12.151578035392	Nominal Dec [deg]
roll_nom	134.43796479326	Nominal Roll [deg]
revision	2	Processing version of data
ontime	6879.9999744296	Sum of GTIs [s]
livetime	6792.8812721148	Livetime [s]
ontime0	6879.9999744296	Sum of GTIs [s]
ontime1	6879.9999744296	Sum of GTIs [s]
ontime2	6879.9999744296	Sum of GTIs [s]
ontime3	6879.9999744296	Sum of GTIs [s]
ontime6	6879.9999744296	Sum of GTIs [s]
ontime7	6879.9999744296	Sum of GTIs [s]
l2events	407667	Number of level 2 events

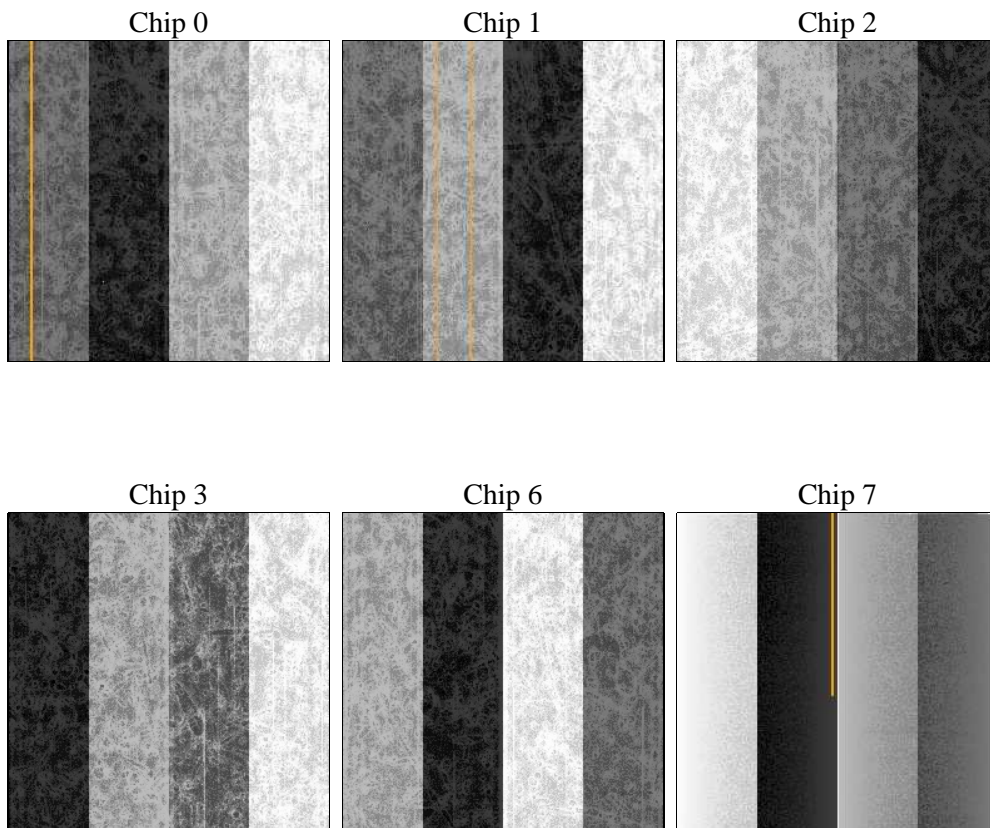
2 OBI

2.1 OBI

2.1.1 Images



2.1.2 Bias



2.1.3 Parameters

obi_num	0	Obi number	sched_exp_time	0.0	[s] Scheduled observation exposure time
ascdsver	8.4.4	Processing system revision	ontime	6879.9999744296	Sum of GTIs [s]
caldsver	4.4.9	 	ontime0	6879.9999744296	Sum of GTIs [s]
date	2012-06-03T11:32:31	Date and time of file creation	ontime1	6879.9999744296	Sum of GTIs [s]
revision	2	Processing version of data	ontime2	6879.9999744296	Sum of GTIs [s]
			ontime3	6879.9999744296	Sum of GTIs [s]
			ontime6	6879.9999744296	Sum of GTIs [s]
			ontime7	6879.9999744296	Sum of GTIs [s]
			l1events	827651	Number of level 1 events

2.1.4 Events

	ccd 0	ccd 1	ccd 2	ccd 3	ccd 6	ccd 7		ccd 0	ccd 1	ccd 2	ccd 3	ccd 6	ccd 7
level 1 events	129149	131606	133213	137564	136645	159474	grade 0 events	35355	34247	36407	36644	35064	17712
rejected events	63100	65372	67273	71133	68410	61692		27%	26%	27%	26%	25%	11%
rejected %	48%	49%	50%	51%	50%	38%	grade 1 events	273	202	257	266	239	140
								0%	0%	0%	0%	0%	0%
							grade 2 events	12235	13259	11108	11347	13294	21611
								9%	10%	8%	8%	9%	13%
							grade 3 events	4468	4253	4570	4640	4289	8957
								3%	3%	3%	3%	3%	5%
							grade 4 events	4286	4401	4601	4527	4218	8621
								3%	3%	3%	3%	3%	5%
							grade 5 events	3412	3500	3373	3808	3626	9248
								2%	2%	2%	2%	2%	5%
							grade 6 events	10196	10522	9769	9742	11840	41591
								7%	7%	7%	7%	8%	26%
							grade 7 events	58924	61222	63128	66590	64075	51594
								45%	46%	47%	48%	46%	32%

2.2 Compared Parameters

Parameter	Planned	Actual	Parameter	Planned	Actual
Instrument	ACIS	ACIS	Obspar format version number	7	7
Detector	ACIS-012367	ACIS-012367	Obspar file type	PREDICTED	ACTUAL
Grating	NONE	NONE	Obspar update status	NONE	UPDATED
Data mode	FAINT	FAINT	Number of optional ACIS chips dropped	0	0
Observation mode	SECONDARY	SECONDARY	On-chip summing requested	N	N
[deg] Pointing RA	0	208.9589058647512	Subarray requested	NONE	NONE
[deg] Pointing Dec	0	12.15157803539186	Alternating exposures requested	N	N
[deg] Pointing Roll	0.0	134.4379647932589	[s] Primary exposure time	3.2	3.2
[mm] SIM focus pos	-1.429586	-0.6828225247311905			
[mm] SIM defocus	0.1037507710433287	0.8505141146731063			
[mm] SIM translation stage pos	250.455976	250.466033080201			
[mm] SIM translation stage offset	0	-0.01005468664627074			
[s] Observation start time (MET)	355071034.465262	355071033.44025			
Observation start date	2009-04-02T14:50:34	2009-04-02T14:50:33			
[s] Observation end time (MET)	355082932.665854	355082931.64084			
Observation end date	2009-04-02T18:08:53	2009-04-02T18:08:51			
Read mode	TIMED	TIMED			

2.3 Star Slots

2.4 FID Slots

A Summary

A.1 Status

V&V Scientist	Joy Nichols
V&V Date (YYYY-MM-DD)	2012.06.07
V&V Edition	1
V&V Disposition and Status	OK
V&V Charge Time	6.8799999744296

A.2 Comments