

V&V Reference Report

L2 ASCDS Version : 8.4.5

Observation 56809 - L2 Version 2
Chandra X-Ray Center

L2 Processing Date : Jun 13 2012

Contents

1	Front	2
2	OBI	3
2.1	OBI	3
2.1.1	Images	3
2.1.2	Bias	3
2.1.3	Parameters	4
2.1.4	Events	4
2.2	Compared Parameters	5
2.3	Star Slots	6
2.4	FID Slots	6
A	Summary	7
A.1	Status	7
A.2	Comments	7

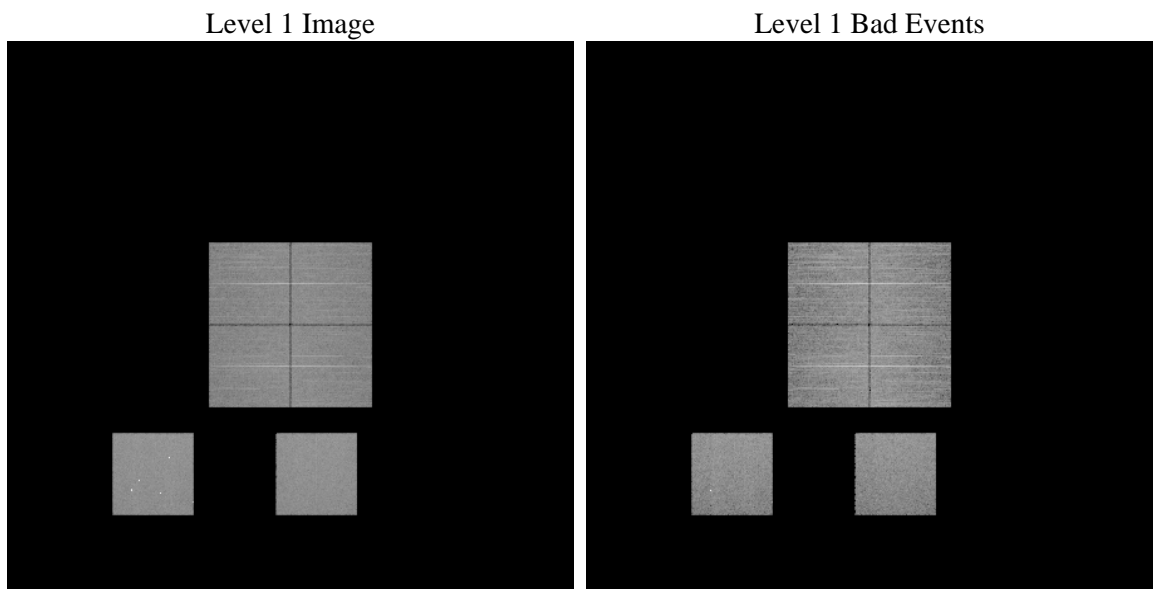
1 Front

seq_num	 	Sequence number
obs_id	56809	Observation id
title	ACIS-012357 diagnostics	Proposal title
observer	CHANDRA engineering request/realtime commanding	Principal investig
object	 	Source name
dtycle	0	
cycle	P	events from which exps? Prim/Second/Both
ra_targ	0.0	Observer's specified target RA [deg]
dec_targ	0.0	Observer's specified target Dec [deg]
ra_nom	349.2855460179	Nominal RA [deg]
dec_nom	17.617200889965	Nominal Dec [deg]
roll_nom	210.34557723954	Nominal Roll [deg]
revision	2	Processing version of data
ontime	8175.9999696016	Sum of GTIs [s]
livetime	8072.4705349904	Livetime [s]
ontime0	8175.9999696016	Sum of GTIs [s]
ontime1	8175.9999696016	Sum of GTIs [s]
ontime2	8175.9999696016	Sum of GTIs [s]
ontime3	8175.9999696016	Sum of GTIs [s]
ontime5	8175.9999696016	Sum of GTIs [s]
ontime7	8175.9999696016	Sum of GTIs [s]
l2events	489707	Number of level 2 events

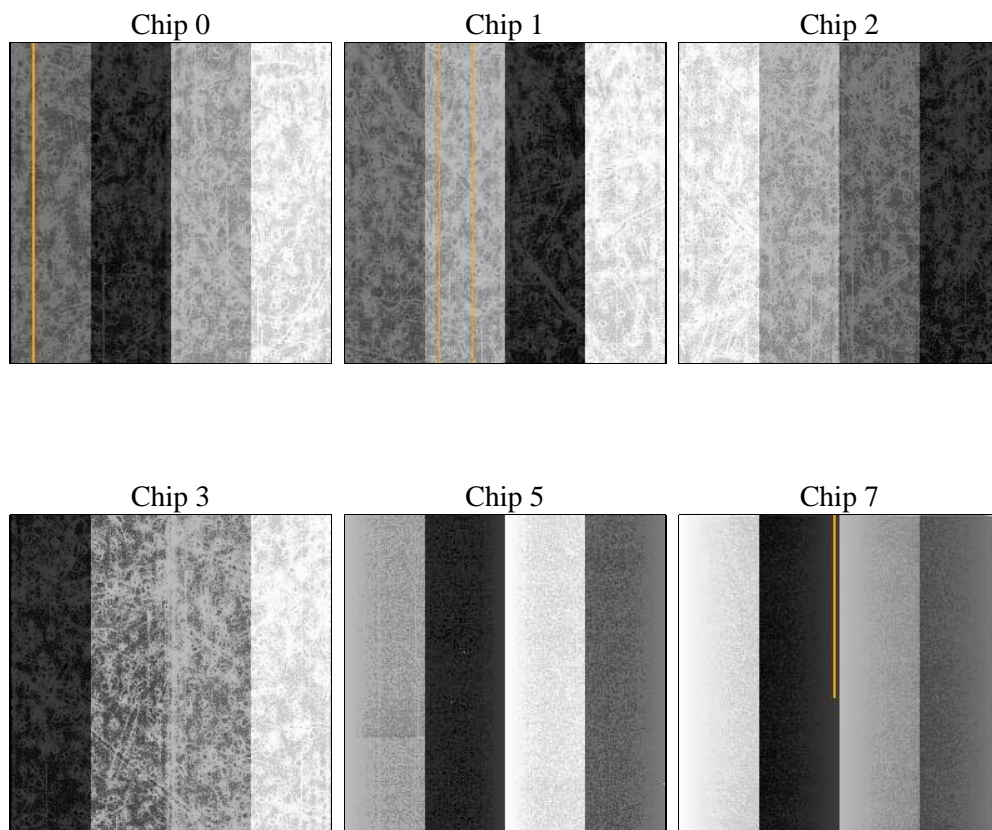
2 OBI

2.1 OBI

2.1.1 Images



2.1.2 Bias



2.1.3 Parameters

obi_num	0	Obi number	sched_exp_time	0.0	[s] Scheduled observation exposure time
ascdsver	8.4.5	Processing system revision	ontime	8175.9999696016	Sum of GTIs [s]
caldsver	4.4.10	 	ontime0	8175.9999696016	Sum of GTIs [s]
date	2012-06-14T00:47:27	Date and time of file creation	ontime1	8175.9999696016	Sum of GTIs [s]
revision	2	Processing version of data	ontime2	8175.9999696016	Sum of GTIs [s]
			ontime3	8175.9999696016	Sum of GTIs [s]
			ontime5	8175.9999696016	Sum of GTIs [s]
			ontime7	8175.9999696016	Sum of GTIs [s]
			l1events	983585	Number of level 1 events

2.1.4 Events

	ccd 0	ccd 1	ccd 2	ccd 3	ccd 5	ccd 7		ccd 0	ccd 1	ccd 2	ccd 3	ccd 5	ccd 7
level 1 events	148566	149665	150279	153023	196673	185379	grade 0 events	38611	38181	39445	39547	21717	20601
rejected events	76336	77025	78265	80583	76823	73051		25%	25%	26%	25%	11%	11%
rejected %	51%	51%	52%	52%	39%	39%	grade 1 events	311	235	305	360	270	144
								0%	0%	0%	0%	0%	0%
							grade 2 events	13224	13905	12541	12450	41251	24576
								8%	9%	8%	8%	20%	13%
							grade 3 events	4890	5009	5015	5122	5246	10640
								3%	3%	3%	3%	2%	5%
							grade 4 events	4886	4872	5033	5116	5198	10344
								3%	3%	3%	3%	2%	5%
							grade 5 events	4172	4526	3952	4643	10247	11835
								2%	3%	2%	3%	5%	6%
							grade 6 events	11208	11292	10522	10764	47392	47066
								7%	7%	7%	7%	24%	25%
							grade 7 events	71264	71645	73466	75021	65352	60173
								47%	47%	48%	49%	33%	32%

2.2 Compared Parameters

Parameter	Planned	Actual
Instrument	ACIS	ACIS
Detector	ACIS-012357	ACIS-012357
Grating	NONE	NONE
Data mode	FAINT	FAINT
Observation mode	SECONDARY	SECONDARY
[deg] Pointing RA	0	349.2855460179001
[deg] Pointing Dec	0	17.61720088996489
[deg] Pointing Roll	0.0	210.345577239543
[mm] SIM focus pos	-1.5263399358	-1.5263399358
[mm] SIM defocus	0.006996627355743357	0.006996627355743357
[mm] SIM translation stage pos	250.4660330802	250.4660330802
[mm] SIM translation stage offset	-0.01005726120527584	-0.01005726120527584
[s] Observation start time (MET)	370337196.628071	370337196.628071
Observation start date	2009-09-26T07:26:37	2009-09-26T07:26:36
[s] Observation end time (MET)	370347014.052014	370347014.052014
Observation end date	2009-09-26T10:10:14	2009-09-26T10:10:14
Read mode	TIMED	TIMED

Parameter	Planned	Actual
Obspar format version number	7	7
Obspar file type	PREDICTED	ACTUAL
Obspar update status	OVERRIDE	OVERRIDE
Number of optional ACIS chips dropped	0	0
On-chip summing requested	N	N
Subarray requested	NONE	NONE
Alternating exposures requested	N	N
[s] Primary exposure time	3.2	3.2

2.3 Star Slots

2.4 FID Slots

A Summary

A.1 Status

V&V Scientist	Jen Lauer
V&V Date (YYYY-MM-DD)	2012.06.18
V&V Edition	1
V&V Disposition and Status	OK
V&V Charge Time	8.1759999696016

A.2 Comments