

# V&V Reference Report

## L2 ASCDS Version : 8.4.5

Observation 56289 - L2 Version 2  
Chandra X-Ray Center

L2 Processing Date : Jun 24 2012

## Contents

<b>1</b>	<b>Front</b>	<b>2</b>
<b>2</b>	<b>OBI</b>	<b>3</b>
2.1	OBI . . . . .	3
2.1.1	Images . . . . .	3
2.1.2	Bias . . . . .	3
2.1.3	Parameters . . . . .	4
2.1.4	Events . . . . .	4
2.2	Compared Parameters . . . . .	5
2.3	Star Slots . . . . .	6
2.4	FID Slots . . . . .	6
<b>A</b>	<b>Summary</b>	<b>7</b>
A.1	Status . . . . .	7
A.2	Comments . . . . .	7

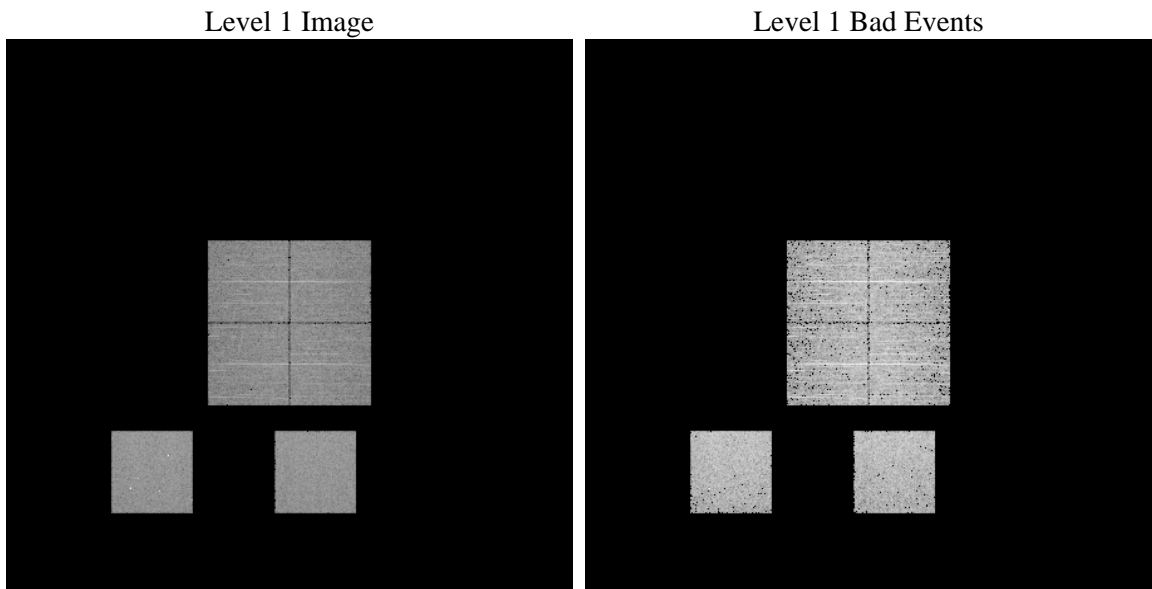
# 1 Front

seq_num	&#160	Sequence number
obs_id	56289	Observation id
title	ACIS-012357 diagnostics	Proposal title
observer	CHANDRA engineering request/realtime commanding	Principal investig
object	&#160	Source name
dtcycle	0	&#160
cycle	P	events from which exps? Prim/Second/Both
ra_targ	0.0	Observer's specified target RA [deg]
dec_targ	0.0	Observer's specified target Dec [deg]
ra_nom	203.48591961155	Nominal RA [deg]
dec_nom	4.9750642998224	Nominal Dec [deg]
roll_nom	215.93927488162	Nominal Roll [deg]
revision	2	Processing version of data
ontime	3283.1621671319	Sum of GTIs [s]
livetime	3241.5887908888	Livetime [s]
ontime0	3283.1252294183	Sum of GTIs [s]
ontime1	3283.084189415	Sum of GTIs [s]
ontime2	3283.0431494117	Sum of GTIs [s]
ontime3	3283.1548455358	Sum of GTIs [s]
ontime5	3283.0021094084	Sum of GTIs [s]
ontime7	3283.1621671319	Sum of GTIs [s]
l2events	171795	Number of level 2 events

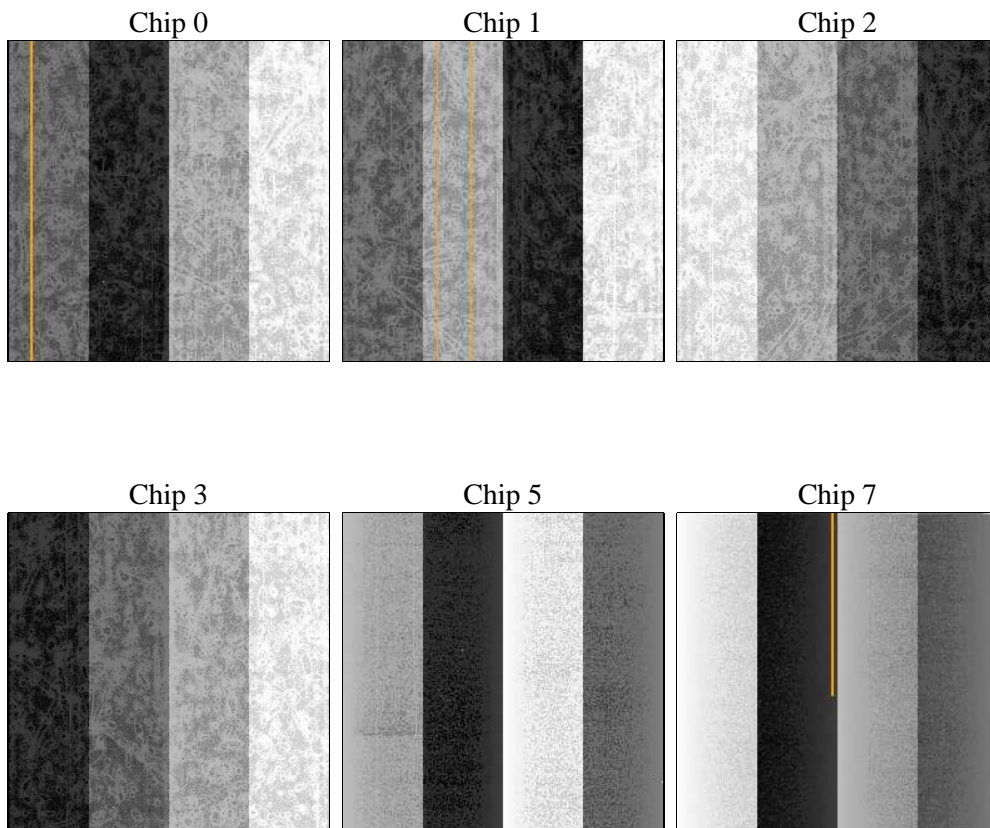
## 2 OBI

### 2.1 OBI

#### 2.1.1 Images



#### 2.1.2 Bias



### 2.1.3 Parameters

obi_num	0	Obi number	sched_exp_time	0.0	[s] Scheduled observation exposure time
ascdsver	8.4.5	Processing system revision	ontime	3283.1621671319	Sum of GTIs [s]
caldsver	4.4.10	&#160	ontime0	3283.1252294183	Sum of GTIs [s]
date	2012-06-25T00:49:15	Date and time of file creation	ontime1	3283.084189415	Sum of GTIs [s]
revision	2	Processing version of data	ontime2	3283.0431494117	Sum of GTIs [s]
			ontime3	3283.1548455358	Sum of GTIs [s]
			ontime5	3283.0021094084	Sum of GTIs [s]
			ontime7	3283.1621671319	Sum of GTIs [s]
			l1events	336098	Number of level 1 events

### 2.1.4 Events

	ccd 0	ccd 1	ccd 2	ccd 3	ccd 5	ccd 7		ccd 0	ccd 1	ccd 2	ccd 3	ccd 5	ccd 7
level 1 events	49680	49820	50319	52586	67461	66232	grade 0 events	13529	13042	13676	13769	6896	7055
rejected events	24300	24479	24930	27271	26653	26642		27%	26%	27%	26%	10%	10%
rejected %	48%	49%	49%	51%	39%	40%	grade 1 events	94	87	111	87	111	49
								0%	0%	0%	0%	0%	0%
							grade 2 events	4674	4937	4515	4418	13935	8585
								9%	9%	8%	8%	20%	12%
							grade 3 events	1677	1707	1648	1759	1767	3582
								3%	3%	3%	3%	2%	5%
							grade 4 events	1649	1769	1771	1724	1809	3637
								3%	3%	3%	3%	2%	5%
							grade 5 events	1518	1534	1551	1737	3673	4259
								3%	3%	3%	3%	5%	6%
							grade 6 events	3851	3886	3779	3645	16401	16731
								7%	7%	7%	6%	24%	25%
							grade 7 events	22688	22858	23268	25447	22869	22334
								45%	45%	46%	48%	33%	33%

## 2.2 Compared Parameters

Parameter	Planned	Actual	Parameter	Planned	Actual
Instrument	ACIS	ACIS	Obspar format version number	7	7
Detector	ACIS-012357	ACIS-012357	Obspar file type	PREDICTED	ACTUAL
Grating	NONE	NONE	Obspar update status	NONE	UPDATED
Data mode	FAINT	FAINT	Number of optional ACIS chips dropped	0	0
Observation mode	SECONDARY	SECONDARY	On-chip summing requested	N	N
[deg] Pointing RA	0	203.4859196115504	Subarray requested	NONE	NONE
[deg] Pointing Dec	0	4.975064299822423	Alternating exposures requested	N	N
[deg] Pointing Roll	0.0	215.939274881619	[s] Primary exposure time	3.2	3.2
[mm] SIM focus pos	-1.429586	-0.6828225247311905			
[mm] SIM defocus	0.1037507710433287	0.8505141146731063			
[mm] SIM translation stage pos	250.455976	250.466033080201			
[mm] SIM translation stage offset	0	-0.01005468664627074			
[s] Observation start time (MET)	389080630.476125	389080629.45113			
Observation start date	2010-05-01T05:57:10	2010-05-01T05:57:09			
[s] Observation end time (MET)	389086056.8264	389086055.80141			
Observation end date	2010-05-01T07:27:37	2010-05-01T07:27:35			
Read mode	TIMED	TIMED			

## **2.3 Star Slots**

## **2.4 FID Slots**

## A Summary

### A.1 Status

V&V Scientist	Beth Sundheim
V&V Date (YYYY-MM-DD)	2012.07.02
V&V Edition	1
V&V Disposition and Status	OK
V&V Charge Time	3.2831621671319

### A.2 Comments