

# V&V Reference Report

## L2 ASCDS Version : 8.4.3

Observation 55649 - L2 Version 2  
Chandra X-Ray Center

L2 Processing Date : Feb 4 2012

## Contents

<b>1</b>	<b>Front</b>	<b>2</b>
<b>2</b>	<b>OBI</b>	<b>3</b>
2.1	OBI . . . . .	3
2.1.1	Images . . . . .	3
2.1.2	Bias . . . . .	3
2.1.3	Parameters . . . . .	4
2.1.4	Events . . . . .	4
2.2	Compared Parameters . . . . .	5
2.3	Star Slots . . . . .	6
2.4	FID Slots . . . . .	6
<b>A</b>	<b>Summary</b>	<b>7</b>
A.1	Status . . . . .	7
A.2	Comments . . . . .	7

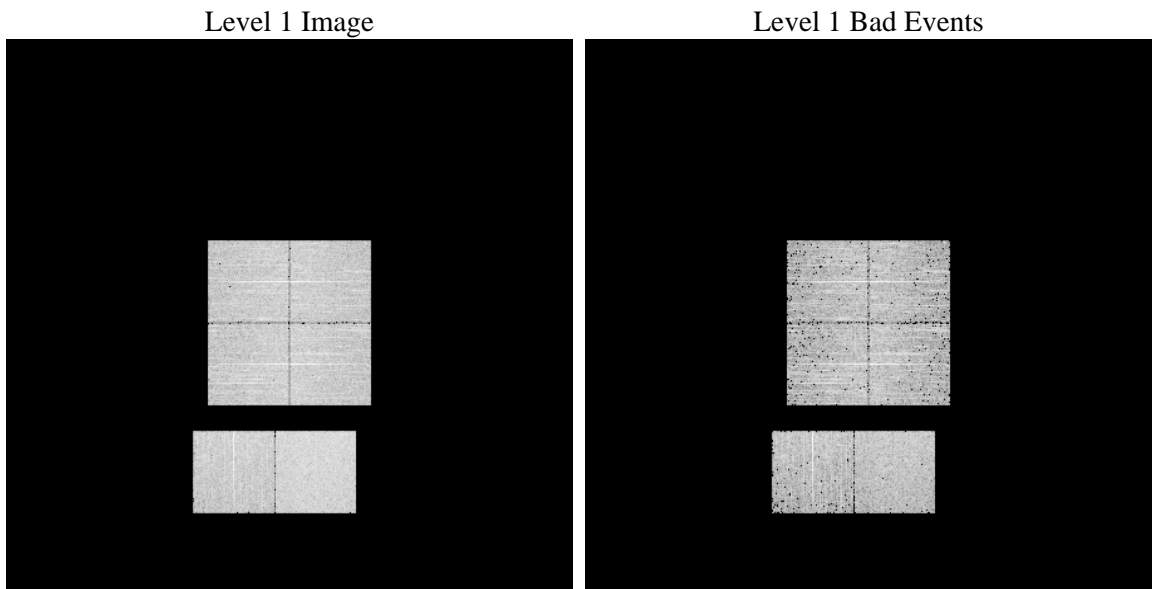
# 1 Front

seq_num	&#160	Sequence number
obs_id	55649	Observation id
title	ACIS-012367 diagnostics	Proposal title
observer	CHANDRA engineering request/realtime commanding	Principal investig
object	&#160	Source name
dtcycle	0	&#160
cycle	P	events from which exps? Prim/Second/Both
ra_targ	0.0	Observer's specified target RA [deg]
dec_targ	0.0	Observer's specified target Dec [deg]
ra_nom	171.83950035695	Nominal RA [deg]
dec_nom	6.4369846516591	Nominal Dec [deg]
roll_nom	70.973711701624	Nominal Roll [deg]
revision	2	Processing version of data
ontime	3347.1568723917	Sum of GTIs [s]
livetime	3304.7731566576	Livetime [s]
ontime0	3347.1158323884	Sum of GTIs [s]
ontime1	3347.0747923851	Sum of GTIs [s]
ontime2	3347.0337523818	Sum of GTIs [s]
ontime3	3347.197912395	Sum of GTIs [s]
ontime6	3346.9927123785	Sum of GTIs [s]
ontime7	3347.1568723917	Sum of GTIs [s]
l2events	137132	Number of level 2 events

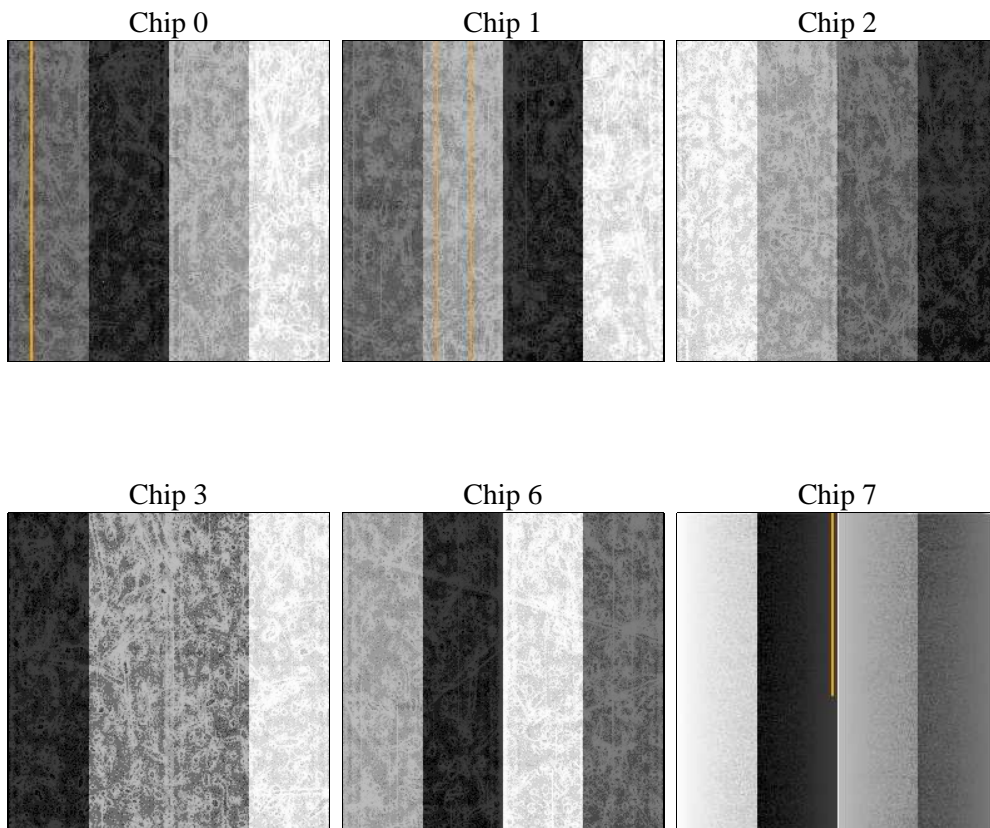
## 2 OBI

### 2.1 OBI

#### 2.1.1 Images



#### 2.1.2 Bias



### 2.1.3 Parameters

obi_num	0	Obi number	sched_exp_time	0.0	[s] Scheduled observation exposure time
ascdsver	8.4.3	Processing system revision	ontime	3347.1568723917	Sum of GTIs [s]
caldsver	4.4.7	&#160	ontime0	3347.1158323884	Sum of GTIs [s]
date	2012-02-04T07:02:15	Date and time of file creation	ontime1	3347.0747923851	Sum of GTIs [s]
revision	2	Processing version of data	ontime2	3347.0337523818	Sum of GTIs [s]
			ontime3	3347.197912395	Sum of GTIs [s]
			ontime6	3346.9927123785	Sum of GTIs [s]
			ontime7	3347.1568723917	Sum of GTIs [s]
			l1events	322463	Number of level 1 events

### 2.1.4 Events

	ccd 0	ccd 1	ccd 2	ccd 3	ccd 6	ccd 7		ccd 0	ccd 1	ccd 2	ccd 3	ccd 6	ccd 7
level 1 events	50472	49640	51480	51788	51978	67105	grade 0 events	12267	12127	12272	12494	12488	6579
rejected events	28574	27687	29967	30233	29398	31428		24%	24%	23%	24%	24%	9%
rejected %	56%	55%	58%	58%	56%	46%	grade 1 events	94	60	85	93	64	63
								0%	0%	0%	0%	0%	0%
							grade 2 events	4427	4630	4103	4241	4493	8179
								8%	9%	7%	8%	8%	12%
							grade 3 events	1639	1522	1649	1569	1606	3383
								3%	3%	3%	3%	3%	5%
							grade 4 events	1609	1569	1674	1555	1624	3525
								3%	3%	3%	3%	3%	5%
							grade 5 events	1745	1629	1571	1832	1747	4530
								3%	3%	3%	3%	3%	6%
							grade 6 events	3665	3873	3512	3449	4129	16798
								7%	7%	6%	6%	7%	25%
							grade 7 events	25026	24230	26614	26555	25827	24048
								49%	48%	51%	51%	49%	35%

## 2.2 Compared Parameters

Parameter	Planned	Actual
Instrument	ACIS	ACIS
Detector	ACIS-012367	ACIS-012367
Grating	NONE	NONE
Data mode	FAINT	FAINT
Observation mode	SECONDARY	SECONDARY
[deg] Pointing RA	0	171.8395003569467
[deg] Pointing Dec	0	6.43698465165911
[deg] Pointing Roll	0.0	70.97371170162366
[mm] SIM focus pos	-1.4281808131	-1.4281808131
[mm] SIM defocus	0.1051557500557434	0.1051557500557434
[mm] SIM translation stage pos	250.4660330802	250.4660330802
[mm] SIM translation stage offset	-0.01005726120527584	-0.01005726120527584
[s] Observation start time (MET)	414013422.605859	414013422.605859
Observation start date	2011-02-13T19:43:43	2011-02-13T19:43:42
[s] Observation end time (MET)	414018561.089435	414018561.089435
Observation end date	2011-02-13T21:09:21	2011-02-13T21:09:21
Read mode	TIMED	TIMED

Parameter	Planned	Actual
Obspar format version number	7	7
Obspar file type	PREDICTED	ACTUAL
Obspar update status	OVERRIDE	OVERRIDE
Number of optional ACIS chips dropped	0	0
On-chip summing requested	N	N
Subarray requested	NONE	NONE
Alternating exposures requested	N	N
[s] Primary exposure time	3.2	3.2

## **2.3 Star Slots**

## **2.4 FID Slots**

## **A Summary**

### **A.1 Status**

V&V Scientist	Jen Lauer
V&V Date (YYYY-MM-DD)	2012.02.07
V&V Edition	1
V&V Disposition and Status	OK
V&V Charge Time	3.3471568723917

### **A.2 Comments**