

# V&V Reference Report

## L2 ASCDS Version : 10.1.1

Observation 53249 - L2 Version 1  
Chandra X-Ray Center

L2 Processing Date : Nov 11 2013

## Contents

<b>1</b>	<b>Front</b>	<b>2</b>
<b>2</b>	<b>OBI</b>	<b>3</b>
2.1	OBI . . . . .	3
2.1.1	Images . . . . .	3
2.1.2	Bias . . . . .	3
2.1.3	Parameters . . . . .	4
2.1.4	Events . . . . .	4
2.2	Compared Parameters . . . . .	5
2.3	Star Slots . . . . .	6
2.4	FID Slots . . . . .	6
<b>A</b>	<b>Summary</b>	<b>7</b>
A.1	Status . . . . .	7
A.2	Comments . . . . .	7

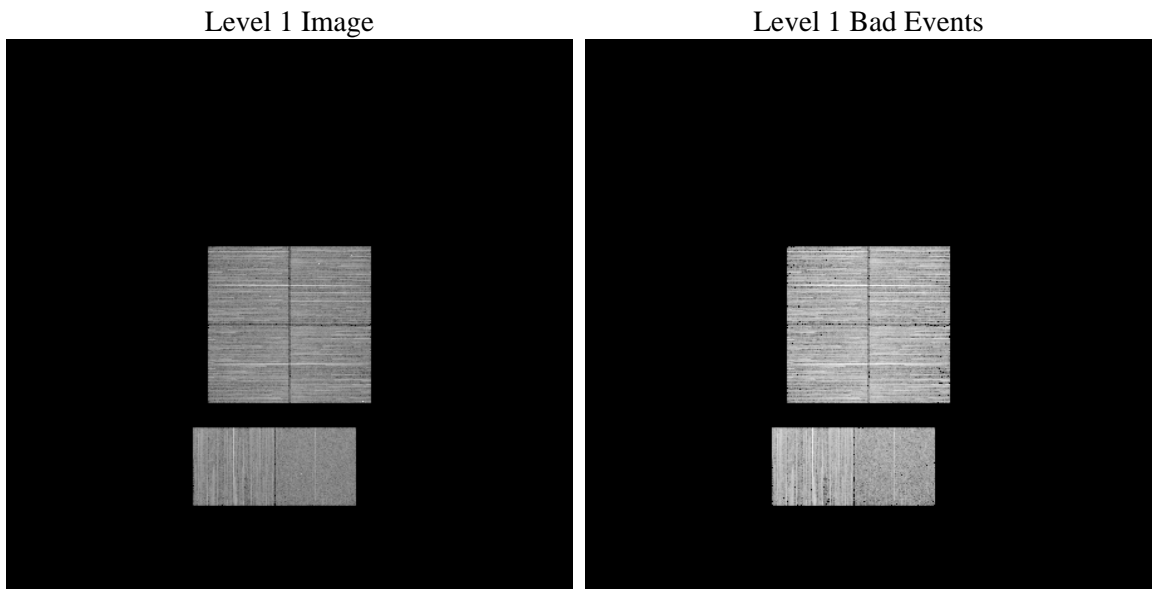
# 1 Front

seq_num	&#160	Sequence number
obs_id	53249	Observation id
title	ACIS-012367 diagnostics	Proposal title
observer	CHANDRA engineering request/realtime commanding	Principal investig
object	&#160	Source name
dtcycle	0	&#160
cycle	P	events from which exps? Prim/Second/Both
ra_targ	0.0	Observer's specified target RA [deg]
dec_targ	0.0	Observer's specified target Dec [deg]
ra_nom	33.771003345955	Nominal RA [deg]
dec_nom	14.929706234974	Nominal Dec [deg]
roll_nom	282.10362268873	Nominal Roll [deg]
revision	1	Processing version of data
ontime	4931.0621668696	Sum of GTIs [s]
livetime	4868.6220885836	Livetime [s]
ontime0	4931.0211268663	Sum of GTIs [s]
ontime1	4930.980086863	Sum of GTIs [s]
ontime2	4930.9390468597	Sum of GTIs [s]
ontime3	4931.1032068729	Sum of GTIs [s]
ontime6	4930.8980068564	Sum of GTIs [s]
ontime7	4931.0621668696	Sum of GTIs [s]
l2events	130767	Number of level 2 events

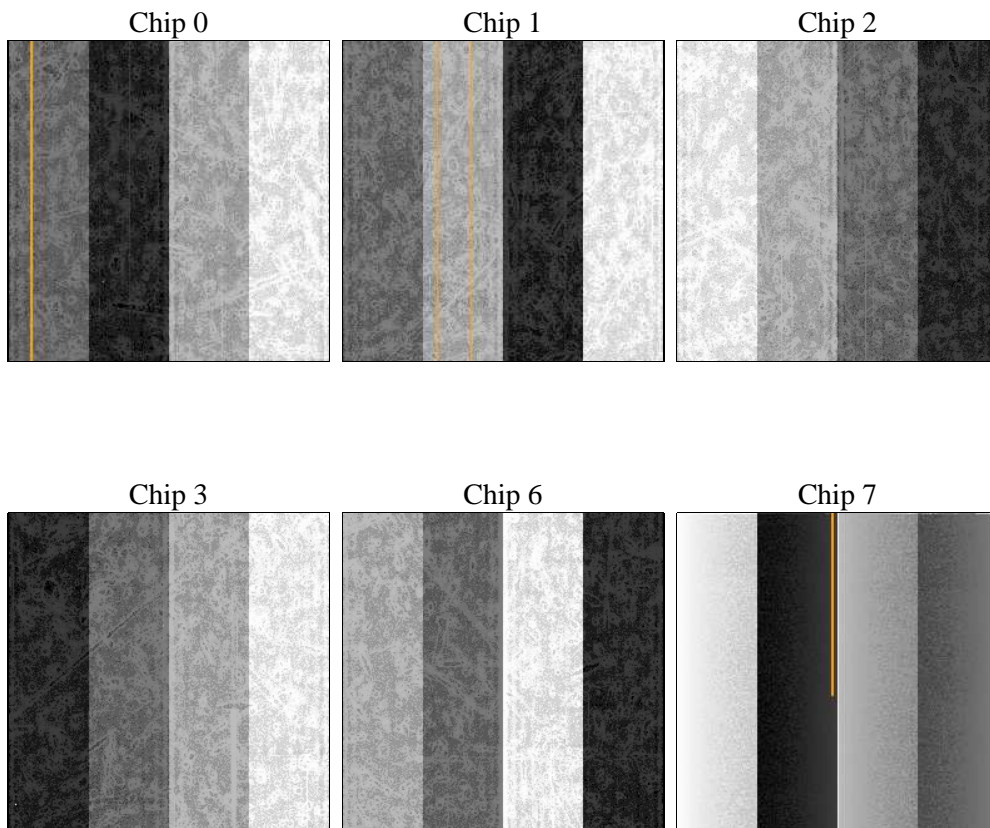
## 2 OBI

### 2.1 OBI

#### 2.1.1 Images



#### 2.1.2 Bias



### 2.1.3 Parameters

obi_num	0	Obi number	sched_exp_time	0.0	[s] Scheduled observation exposure time
ascdsver	10.1.1	Processing system revision	ontime	4931.0621668696	Sum of GTIs [s]
caldsver	4.5.8	&#160	ontime0	4931.0211268663	Sum of GTIs [s]
date	2013-11-11T13:40:24	Date and time of file creation	ontime1	4930.980086863	Sum of GTIs [s]
revision	1	Processing version of data	ontime2	4930.9390468597	Sum of GTIs [s]
			ontime3	4931.1032068729	Sum of GTIs [s]
			ontime6	4930.8980068564	Sum of GTIs [s]
			ontime7	4931.0621668696	Sum of GTIs [s]
			l1events	571581	Number of level 1 events

### 2.1.4 Events

	ccd 0	ccd 1	ccd 2	ccd 3	ccd 6	ccd 7		ccd 0	ccd 1	ccd 2	ccd 3	ccd 6	ccd 7
level 1 events	96721	98100	98854	103218	98158	76530	grade 0 events	8200	7282	8829	10136	6163	4796
rejected events	76169	77112	78335	81155	76894	41326		8%	7%	8%	9%	6%	6%
rejected %	78%	78%	79%	78%	78%	53%	grade 1 events	45	31	49	58	22	41
								0%	0%	0%	0%	0%	0%
							grade 2 events	6445	7586	5822	5956	8712	8728
								6%	7%	5%	5%	8%	11%
							grade 3 events	1125	880	1102	1147	777	2613
								1%	0%	1%	1%	0%	3%
							grade 4 events	956	917	1110	1076	800	2453
								0%	0%	1%	1%	0%	3%
							grade 5 events	1369	1288	1324	1576	1332	3807
								1%	1%	1%	1%	1%	4%
							grade 6 events	3852	4338	3670	3762	4830	16630
								3%	4%	3%	3%	4%	21%
							grade 7 events	74729	75778	76948	79507	75522	37462
								77%	77%	77%	77%	76%	48%

## 2.2 Compared Parameters

Parameter	Planned	Actual	Parameter	Planned	Actual
Instrument	ACIS	ACIS	Obspar format version number	7	7
Detector	ACIS-012367	ACIS-012367	Obspar file type	PREDICTED	ACTUAL
Grating	NONE	NONE	Obspar update status	NONE	UPDATED
Data mode	FAINT	FAINT	Number of optional ACIS chips dropped	0	0
Observation mode	SECONDARY	SECONDARY	On-chip summing requested	N	N
[deg] Pointing RA	0	33.77100334595548	Subarray requested	NONE	NONE
[deg] Pointing Dec	0	14.92970623497448	Alternating exposures requested	N	N
[deg] Pointing Roll	0.0	282.1036226887343	[s] Primary exposure time	3.2	3.2
[mm] SIM focus pos	-1.429586	-1.428180813131781			
[mm] SIM defocus	0.1037507710433287	0.1051558262725154			
[mm] SIM translation stage pos	250.455976	250.466033080201			
[mm] SIM translation stage offset	0	-0.01005468664627074			
[s] Observation start time (MET)	500354987.343541	500354986.31854			
Observation start date	2013-11-09T03:29:47	2013-11-09T03:29:46			
[s] Observation end time (MET)	500366602.644177	500366601.61918			
Observation end date	2013-11-09T06:43:23	2013-11-09T06:43:21			
Read mode	TIMED	TIMED			

## 2.3 Star Slots

## 2.4 FID Slots

## A Summary

### A.1 Status

V&V Scientist	Jen Lauer
V&V Date (YYYY-MM-DD)	2013.11.12
V&V Edition	1
V&V Disposition and Status	OK
V&V Charge Time	4.9310621668696

### A.2 Comments