

V&V Reference Report

L2 ASCDS Version : 10.1.1

Observation 53229 - L2 Version 1
Chandra X-Ray Center

L2 Processing Date : Nov 17 2013

Contents

| | | |
|----------|-------------------------------|----------|
| 1 | Front | 2 |
| 2 | OBI | 3 |
| 2.1 | OBI | 3 |
| 2.1.1 | Images | 3 |
| 2.1.2 | Bias | 3 |
| 2.1.3 | Parameters | 4 |
| 2.1.4 | Events | 4 |
| 2.2 | Compared Parameters | 5 |
| 2.3 | Star Slots | 6 |
| 2.4 | FID Slots | 6 |
| A | Summary | 7 |
| A.1 | Status | 7 |
| A.2 | Comments | 7 |

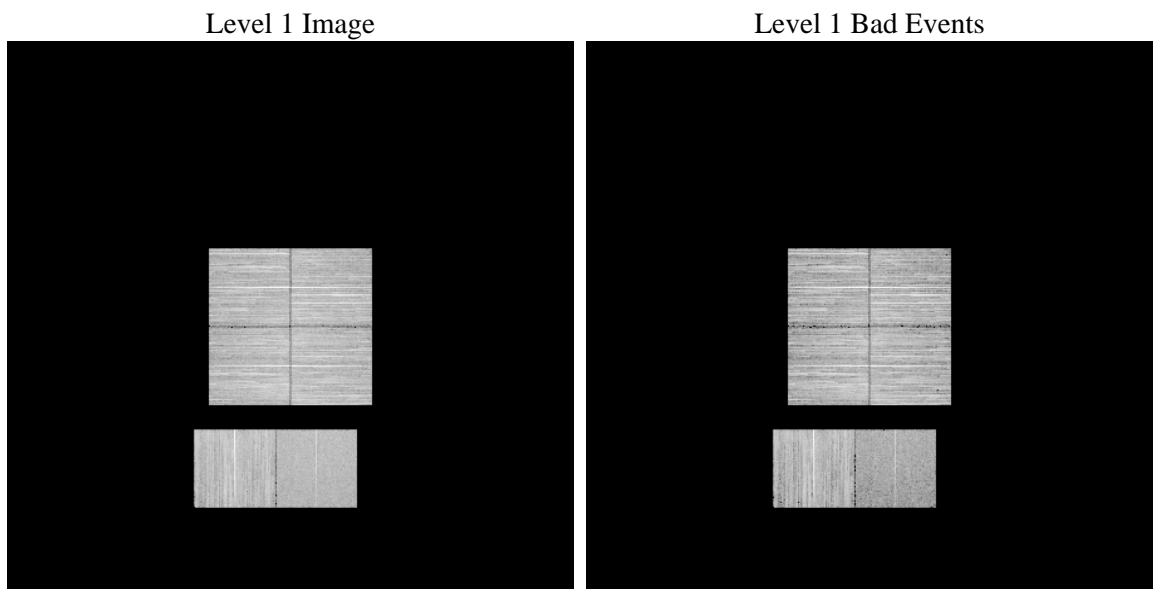
1 Front

| | | |
|----------|---|---|
| seq_num | | Sequence number |
| obs_id | 53229 | Observation id |
| title | ACIS-012367 diagnostics | Proposal title |
| observer | CHANDRA engineering request/realtime commanding | Principal investig |
| object | | Source name |
| dtcycle | 0 | |
| cycle | P | events from which exps? Prim/Second/Both |
| ra_targ | 0.0 | Observer's specified target RA [deg] |
| dec_targ | 0.0 | Observer's specified target Dec [deg] |
| ra_nom | 75.762118423349 | Nominal RA [deg] |
| dec_nom | 7.6240681832547 | Nominal Dec [deg] |
| roll_nom | 61.236831280284 | Nominal Roll [deg] |
| revision | 1 | Processing version of data |
| ontime | 8291.1999691725 | Sum of GTIs [s] |
| livetime | 8186.2118028016 | Livetime [s] |
| ontime0 | 8291.1999691725 | Sum of GTIs [s] |
| ontime1 | 8291.1999691725 | Sum of GTIs [s] |
| ontime2 | 8291.1999691725 | Sum of GTIs [s] |
| ontime3 | 8291.1999691725 | Sum of GTIs [s] |
| ontime6 | 8291.1999691725 | Sum of GTIs [s] |
| ontime7 | 8291.1999691725 | Sum of GTIs [s] |
| l2events | 190988 | Number of level 2 events |

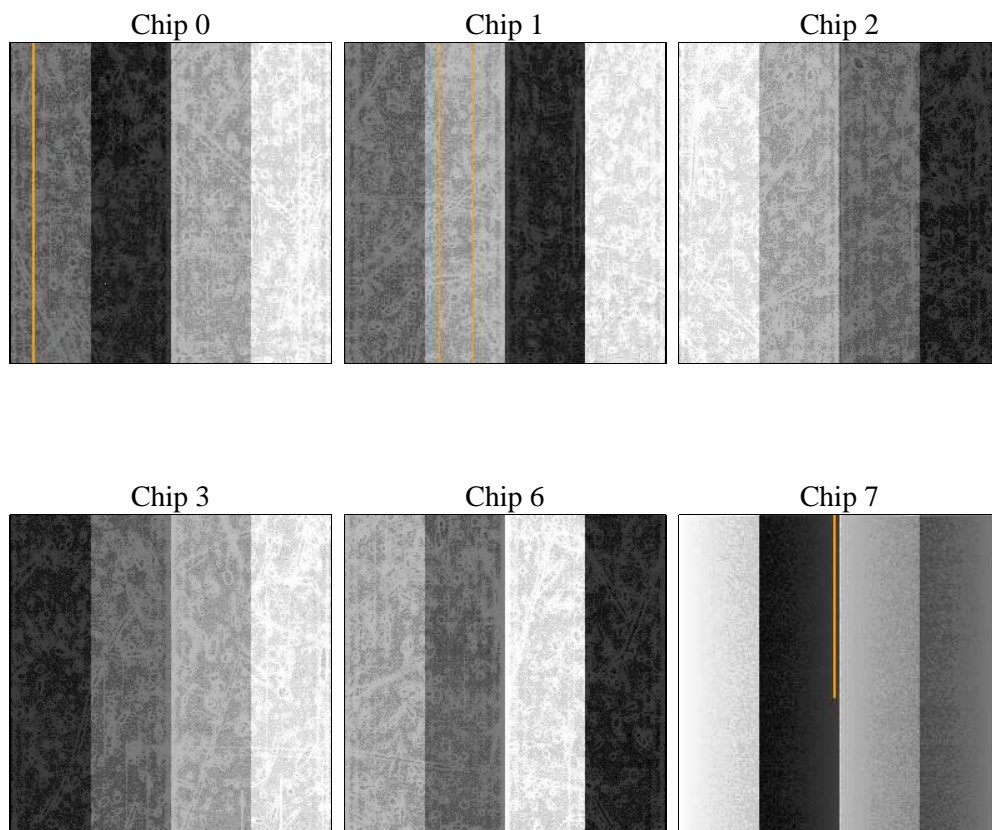
2 OBI

2.1 OBI

2.1.1 Images



2.1.2 Bias



2.1.3 Parameters

| | | | | | |
|----------|---------------------|--------------------------------|----------------|-----------------|---|
| obi_num | 0 | Obi number | sched_exp_time | 0.0 | [s] Scheduled observation exposure time |
| ascdsver | 10.1.1 | Processing system revision | ontime | 8291.1999691725 | Sum of GTIs [s] |
| caldsver | 4.5.8 | | ontime0 | 8291.1999691725 | Sum of GTIs [s] |
| date | 2013-11-17T19:51:19 | Date and time of file creation | ontime1 | 8291.1999691725 | Sum of GTIs [s] |
| revision | 1 | Processing version of data | ontime2 | 8291.1999691725 | Sum of GTIs [s] |
| | | | ontime3 | 8291.1999691725 | Sum of GTIs [s] |
| | | | ontime6 | 8291.1999691725 | Sum of GTIs [s] |
| | | | ontime7 | 8291.1999691725 | Sum of GTIs [s] |
| | | | l1events | 841434 | Number of level 1 events |

2.1.4 Events

| | ccd 0 | ccd 1 | ccd 2 | ccd 3 | ccd 6 | ccd 7 | | ccd 0 | ccd 1 | ccd 2 | ccd 3 | ccd 6 | ccd 7 |
|-----------------|--------|--------|--------|--------|--------|--------|----------------|--------|--------|--------|--------|--------|-------|
| level 1 events | 139051 | 144063 | 145467 | 149017 | 146005 | 117831 | grade 0 events | 14645 | 14602 | 15277 | 15377 | 15130 | 7997 |
| rejected events | 110144 | 114507 | 116029 | 119475 | 115421 | 63303 | | 10% | 10% | 10% | 10% | 10% | 6% |
| rejected % | 79% | 79% | 79% | 80% | 79% | 53% | grade 1 events | 90 | 69 | 97 | 91 | 79 | 83 |
| | | | | | | | | 0% | 0% | 0% | 0% | 0% | 0% |
| | | | | | | | grade 2 events | 5802 | 5994 | 5788 | 5458 | 6099 | 13249 |
| | | | | | | | | 4% | 4% | 3% | 3% | 4% | 11% |
| | | | | | | | grade 3 events | 2003 | 2013 | 2067 | 2149 | 1963 | 4640 |
| | | | | | | | | 1% | 1% | 1% | 1% | 1% | 3% |
| | | | | | | | grade 4 events | 1966 | 1995 | 1974 | 2109 | 2039 | 4659 |
| | | | | | | | | 1% | 1% | 1% | 1% | 1% | 3% |
| | | | | | | | grade 5 events | 2781 | 2830 | 2551 | 3105 | 3053 | 7404 |
| | | | | | | | | 1% | 1% | 1% | 2% | 2% | 6% |
| | | | | | | | grade 6 events | 4491 | 4952 | 4332 | 4449 | 5353 | 23983 |
| | | | | | | | | 3% | 3% | 2% | 2% | 3% | 20% |
| | | | | | | | grade 7 events | 107273 | 111608 | 113381 | 116279 | 112289 | 55816 |
| | | | | | | | | 77% | 77% | 77% | 78% | 76% | 47% |

2.2 Compared Parameters

| Parameter | Planned | Actual | Parameter | Planned | Actual |
|-----------------------------------|---------------------|----------------------|---------------------------------------|-----------|---------|
| Instrument | ACIS | ACIS | Obspar format version number | 7 | 7 |
| Detector | ACIS-012367 | ACIS-012367 | Obspar file type | PREDICTED | ACTUAL |
| Grating | NONE | NONE | Obspar update status | NONE | UPDATED |
| Data mode | FAINT | FAINT | Number of optional ACIS chips dropped | 0 | 0 |
| Observation mode | SECONDARY | SECONDARY | On-chip summing requested | N | N |
| [deg] Pointing RA | 0 | 75.76211842334902 | Subarray requested | NONE | NONE |
| [deg] Pointing Dec | 0 | 7.624068183254675 | Alternating exposures requested | N | N |
| [deg] Pointing Roll | 0.0 | 61.23683128028363 | [s] Primary exposure time | 3.2 | 3.2 |
| [mm] SIM focus pos | -1.429586 | -1.428180813131781 | | | |
| [mm] SIM defocus | 0.1037507710433287 | 0.1051558262725154 | | | |
| [mm] SIM translation stage pos | 250.455976 | 250.466033080201 | | | |
| [mm] SIM translation stage offset | 0 | -0.01005468664627074 | | | |
| [s] Observation start time (MET) | 501037555.380957 | 501037554.35596 | | | |
| Observation start date | 2013-11-17T01:05:55 | 2013-11-17T01:05:54 | | | |
| [s] Observation end time (MET) | 501047469.181501 | 501047468.1565 | | | |
| Observation end date | 2013-11-17T03:51:09 | 2013-11-17T03:51:08 | | | |
| Read mode | TIMED | TIMED | | | |

2.3 Star Slots

2.4 FID Slots

A Summary

A.1 Status

| | |
|----------------------------|-----------------|
| V&V Scientist | Jen Lauer |
| V&V Date (YYYY-MM-DD) | 2013.11.17 |
| V&V Edition | 1 |
| V&V Disposition and Status | OK |
| V&V Charge Time | 8.2911999691725 |

A.2 Comments