

V&V Reference Report

L2 ASCDS Version : 8.4.5

Observation 5299 - L2 Version 3
Chandra X-Ray Center

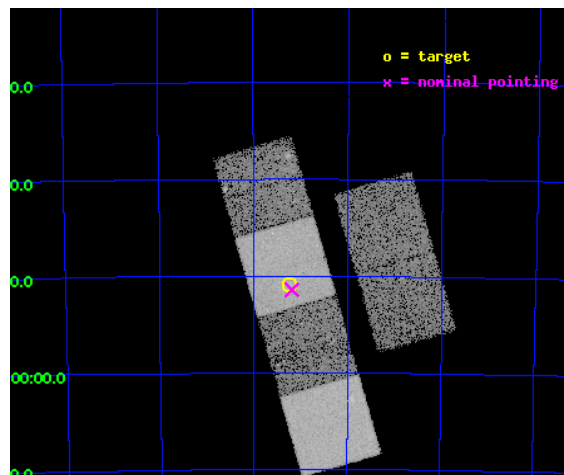
L2 Processing Date : Nov 11 2012

Contents

1	Front	2
2	OBI	3
2.1	OBI	3
2.1.1	Images	3
2.1.2	Bias	3
2.1.3	Parameters	4
2.1.4	Events	4
2.2	Compared Parameters	5
2.3	Aspect	6
2.4	Star Slots	9
2.4.1	Slot 3	9
2.4.2	Slot 4	10
2.4.3	Slot 5	11
2.4.4	Slot 6	12
2.4.5	Slot 7	13
2.5	FID Slots	14
2.5.1	Slot 0	14
2.5.2	Slot 1	15
2.5.3	Slot 2	16
A	Summary	17
A.1	Status	17
A.2	Comments	17

1 Front

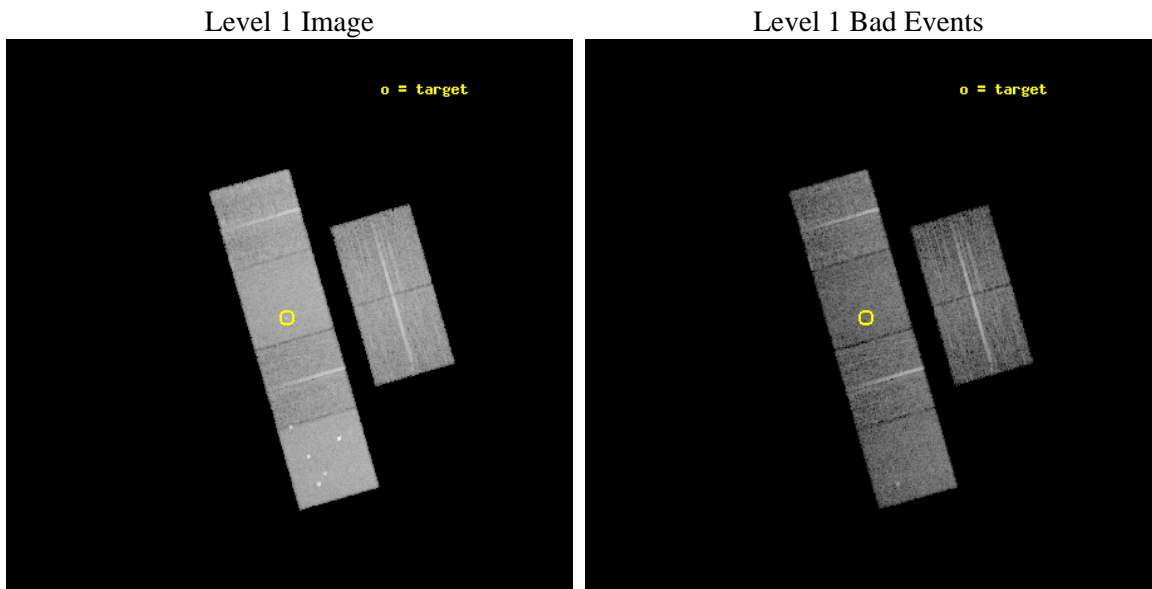
seq_num	300123	Sequence number
obs_id	5299	Observation id
title	A Uniform Study of Globular Cluster X-ray Sources: The Keys to Cluster Dynamical Evolution	Proposal title
observer	Prof. Walter Lewin	Principal investigator
object	NGC 362	Source name
dtcycle	0	
cycle	P	events from which exps? Prim/Second/Both
ra_targ	15.809583	Observer's specified target RA [deg]
dec_targ	-70.848333	Observer's specified target Dec [deg]
ra_nom	15.796690933848	Nominal RA [deg]
dec_nom	-70.857052129876	Nominal Dec [deg]
roll_nom	253.96645178765	Nominal Roll [deg]
revision	3	Processing version of data
ontime	13139.199951053	Sum of GTIs [s]
livetime	12972.823489796	Livetime [s]
ontime2	13139.199951053	Sum of GTIs [s]
ontime3	13139.199951053	Sum of GTIs [s]
ontime5	13139.199951053	Sum of GTIs [s]
ontime6	13139.199951053	Sum of GTIs [s]
ontime7	13139.199951053	Sum of GTIs [s]
ontime8	13139.199951053	Sum of GTIs [s]
l2events	133057	Number of level 2 events



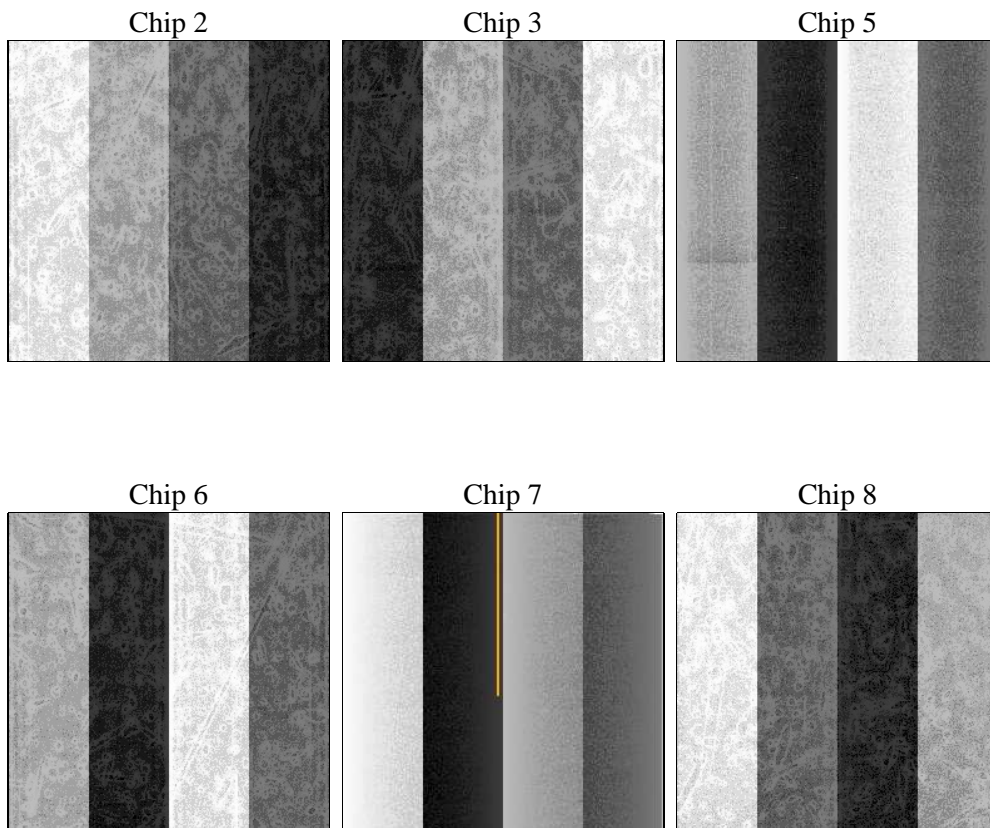
2 OBI

2.1 OBI

2.1.1 Images



2.1.2 Bias



2.1.3 Parameters

obi_num	0	Obi number	sched_exp_time	13000.000000	[s] Scheduled observation exposure time
ascdsver	8.4.5	Processing system revision	ontime	13139.199951053	Sum of GTIs [s]
caldsver	4.5.2	 	ontime2	13139.199951053	Sum of GTIs [s]
date	2012-11-10T22:20:34	Date and time of file creation	ontime3	13139.199951053	Sum of GTIs [s]
revision	3	Processing version of data	ontime5	13139.199951053	Sum of GTIs [s]
			ontime6	13139.199951053	Sum of GTIs [s]
			ontime7	13139.199951053	Sum of GTIs [s]
			ontime8	13139.199951053	Sum of GTIs [s]
			l1events	629857	Number of level 1 events

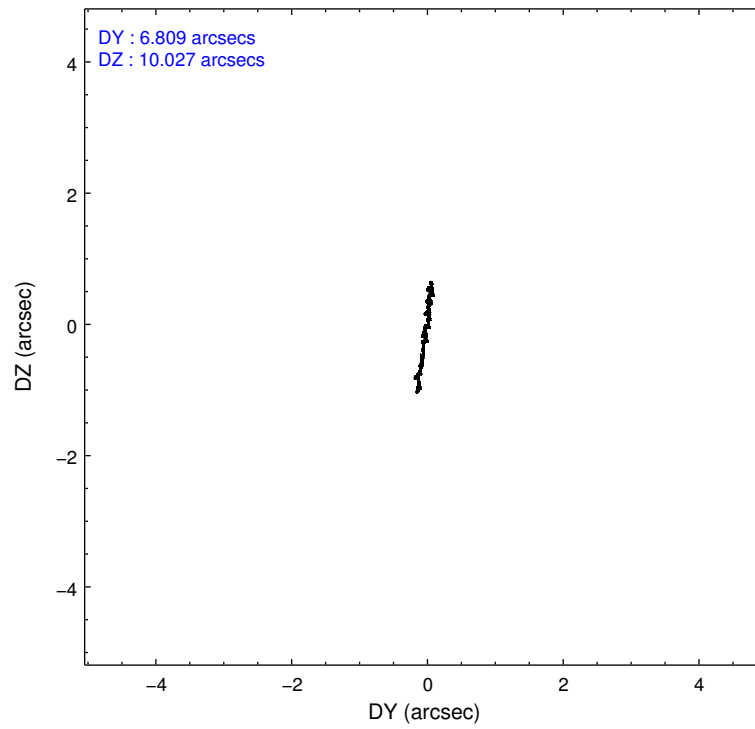
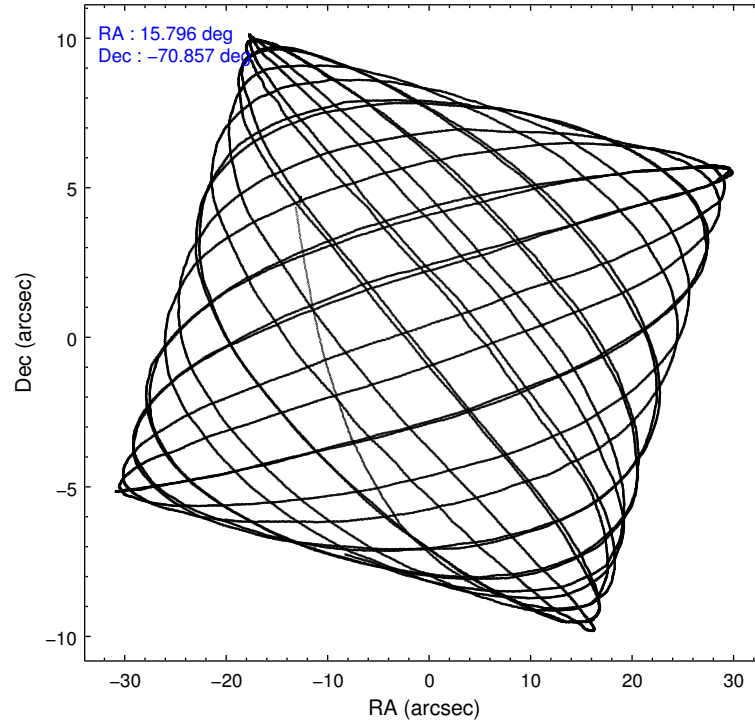
2.1.4 Events

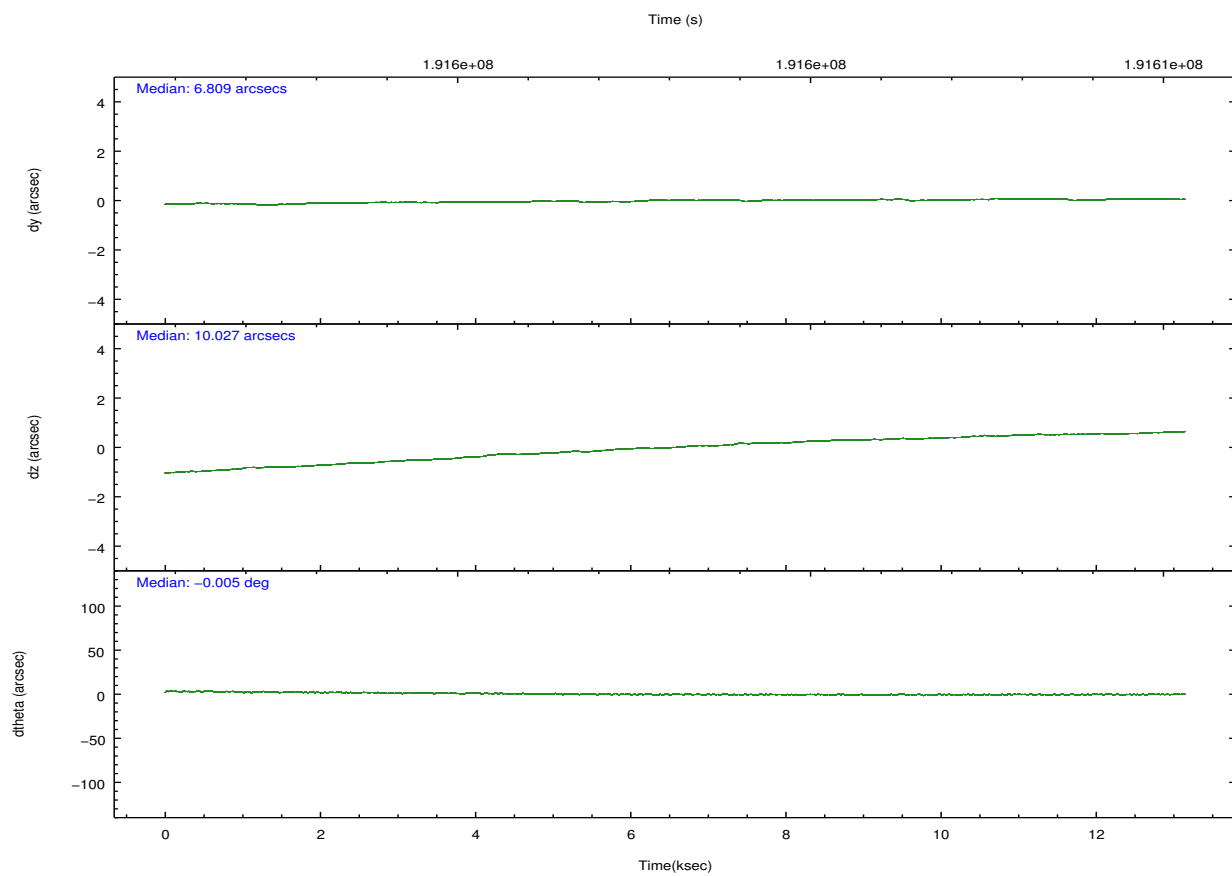
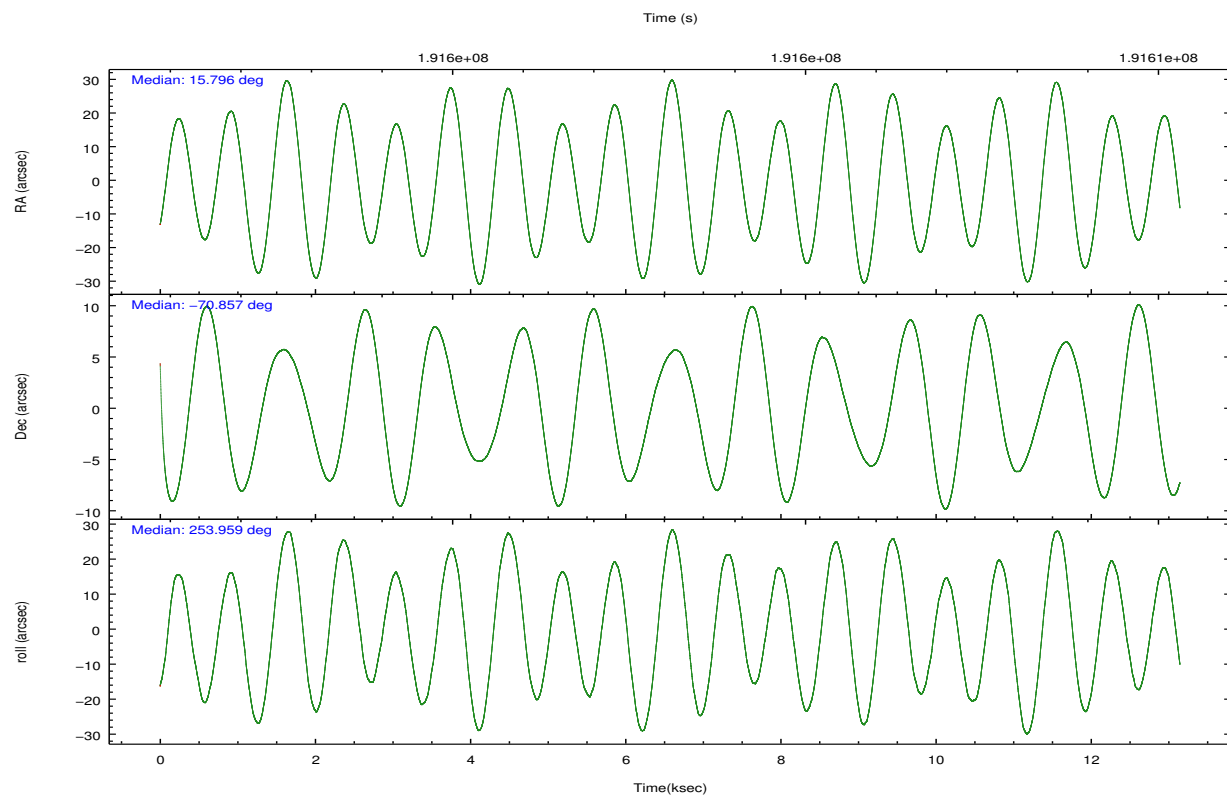
	ccd 2	ccd 3	ccd 5	ccd 6	ccd 7	ccd 8		ccd 2	ccd 3	ccd 5	ccd 6	ccd 7	ccd 8
level 1 events	85250	83757	141202	86564	124464	108620	grade 0 events	4838	4512	12084	4571	5244	7890
rejected events	75872	74735	80669	76914	77701	88347		5%	5%	8%	5%	4%	7%
rejected %	88%	89%	57%	88%	62%	81%	grade 1 events	42	46	453	63	119	67
								0%	0%	0%	0%	0%	0%
							grade 2 events	2124	1987	18636	2277	10604	4830
								2%	2%	13%	2%	8%	4%
							grade 3 events	958	999	2799	1041	4798	2376
								1%	1%	1%	1%	3%	2%
							grade 4 events	970	1030	2703	995	4799	2270
								1%	1%	1%	1%	3%	2%
							grade 5 events	3586	3892	9972	4115	11441	5133
								4%	4%	7%	4%	9%	4%
							grade 6 events	1752	1753	33329	2114	28220	5554
								2%	2%	23%	2%	22%	5%
							grade 7 events	70980	69538	61226	71388	59239	80500
								83%	83%	43%	82%	47%	74%

2.2 Compared Parameters

Parameter	Planned	Actual	Parameter	Planned	Actual
Instrument	ACIS	ACIS	Obspar format version number	7	7
Detector	ACIS-235678	ACIS-235678	Obspar file type	PREDICTED	ACTUAL
Grating	NONE	NONE	Obspar update status	NONE	UPDATED
Data mode	FAINT	FAINT	Number of optional ACIS chips dropped	0	0
Observation mode	POINTING	POINTING	On-chip summing requested	N	N
[deg] Pointing RA	15.775492	15.79669093384774	Subarray requested	NONE	NONE
[deg] Pointing Dec	-70.830691	-70.85705212987573	Alternating exposures requested	N	N
[deg] Pointing Roll	253.789794	253.9664517876457	[s] Primary exposure time	0.000000	3.2
[mm] SIM focus pos	-0.684267	-0.6828225247311905			
[mm] SIM defocus	0	0.001444936568705701			
[mm] SIM translation stage pos	-190.132523	-190.1400660498719			
[mm] SIM translation stage offset	0	0.00754346686406393			
[s] Observation start time (MET)	191596656.184000	191594692.86034			
Observation start date	2004-01-27T13:16:32	2004-01-27T12:44:52			
[s] Observation end time (MET)	191609656.184000	191610406.11103			
Observation end date	2004-01-27T16:53:12	2004-01-27T17:06:46			
Read mode	TIMED	TIMED			

2.3 Aspect



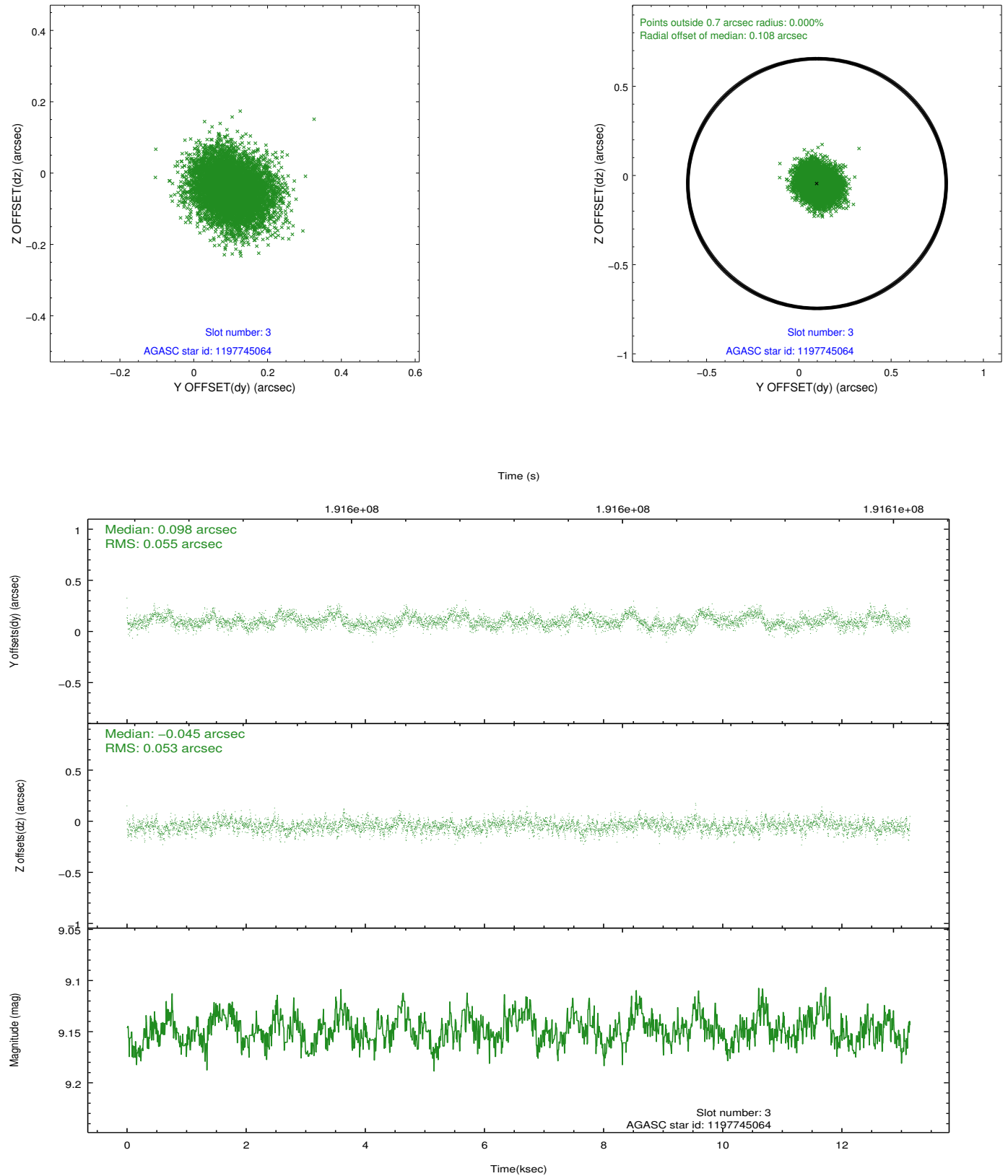


Slot Statistics

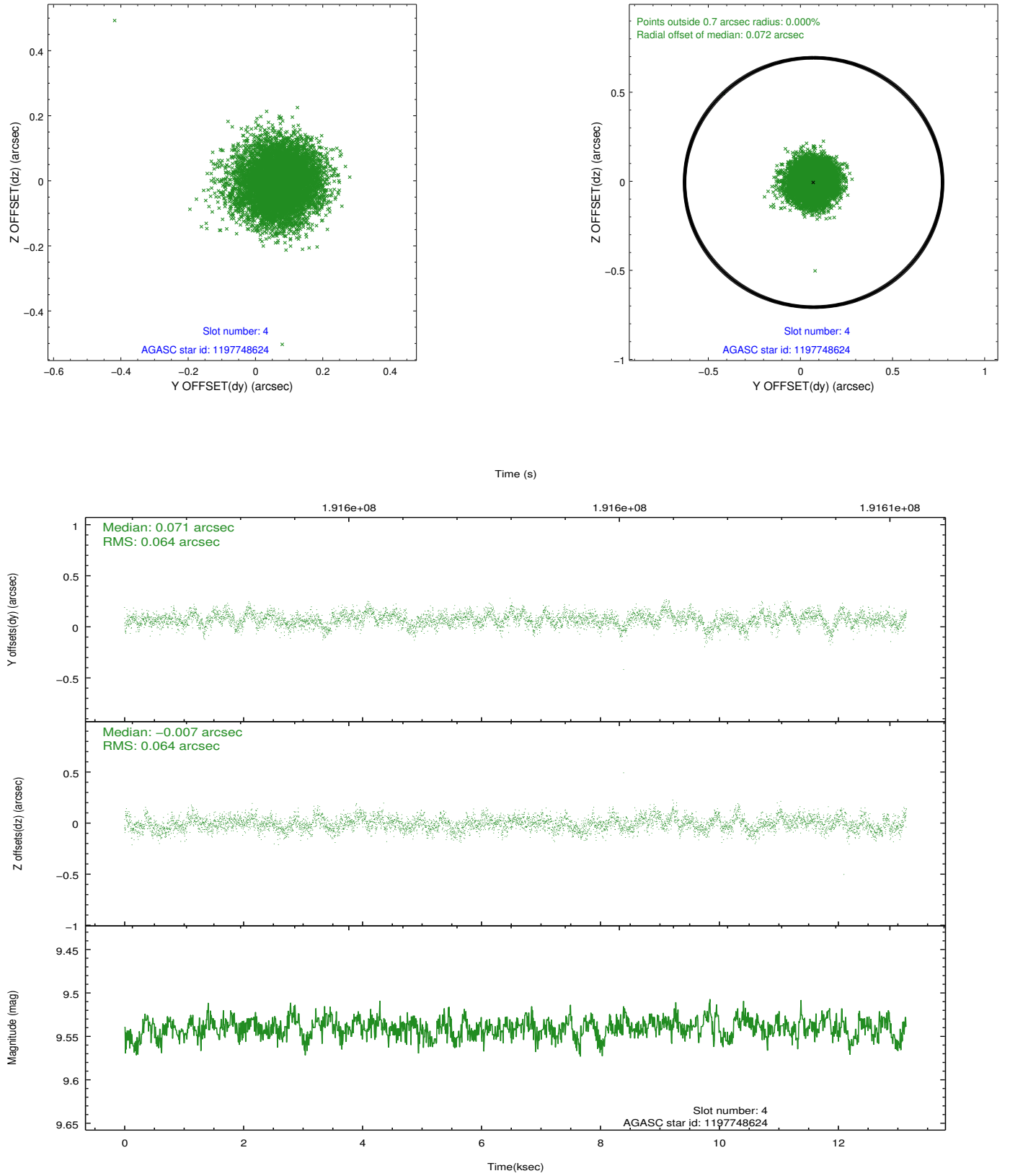
slot	status	id	mag	n_pts	med_dy	med_dz	dr1	dr2	ra	dec	mean_y	mean_z
0	FID	ACIS-S-2	7.10	3207	-0.055	-0.029	0.011	0.020	0.000000	0.000000	-759.56	-1731.24
1	FID	ACIS-S-4	7.20	3207	0.085	0.034	0.006	0.011	0.000000	0.000000	2153.66	176.97
2	FID	ACIS-S-5	7.23	3206	-0.062	0.003	0.012	0.022	0.000000	0.000000	-1811.97	170.97
3	GUIDE	1197745064	9.15	6413	0.098	-0.045	0.081	0.132	14.488483	-70.869346	573.66	-1414.35
4	GUIDE	1197748624	9.54	6410	0.071	-0.007	0.097	0.155	14.991477	-70.268725	-1670.29	-1478.23
5	GUIDE	1197874240	9.41	6409	-0.040	0.295	0.082	0.131	17.264679	-70.473371	-1714.63	1367.68
6	GUIDE	1197875368	8.17	6412	-0.047	-0.113	0.070	0.105	17.140782	-70.666831	-1003.42	1403.03
7	GUIDE	1197877312	7.92	6411	-0.079	-0.130	0.076	0.121	16.362782	-70.933298	164.94	767.62

2.4 Star Slots

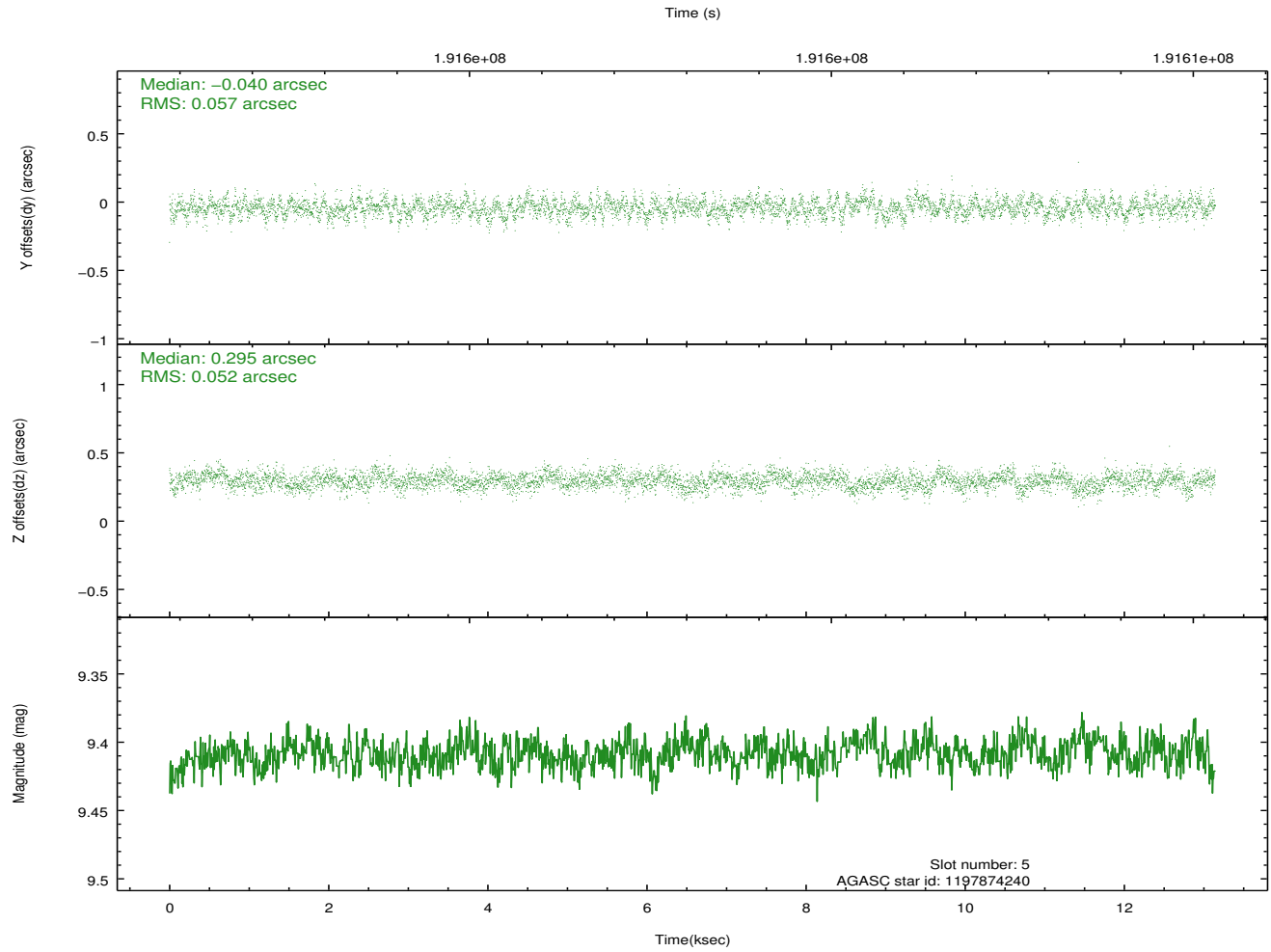
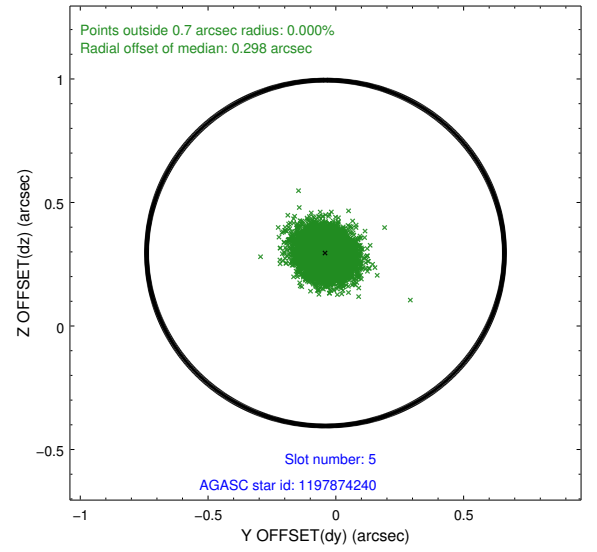
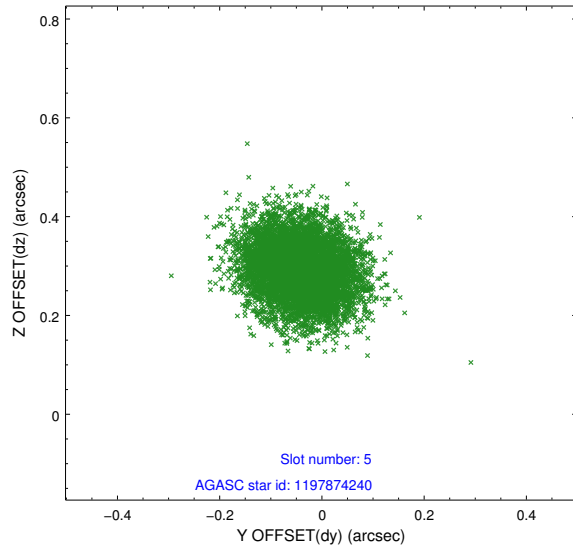
2.4.1 Slot 3



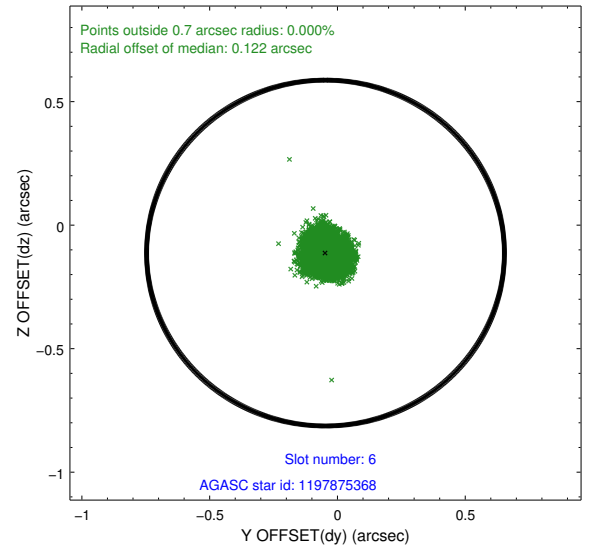
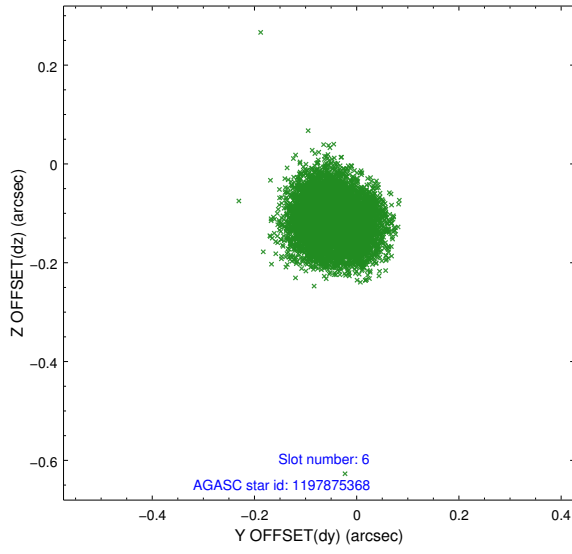
2.4.2 Slot 4



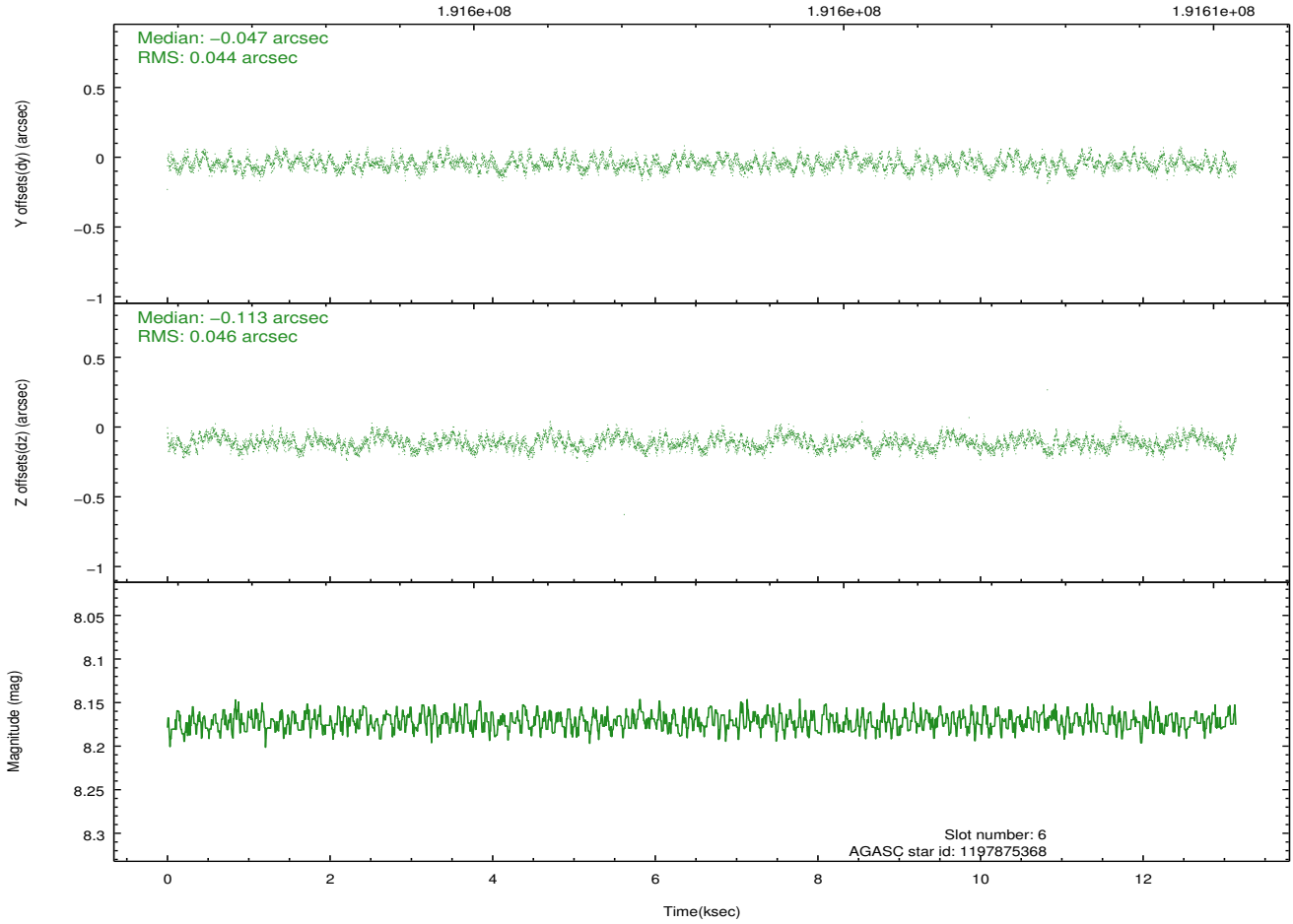
2.4.3 Slot 5



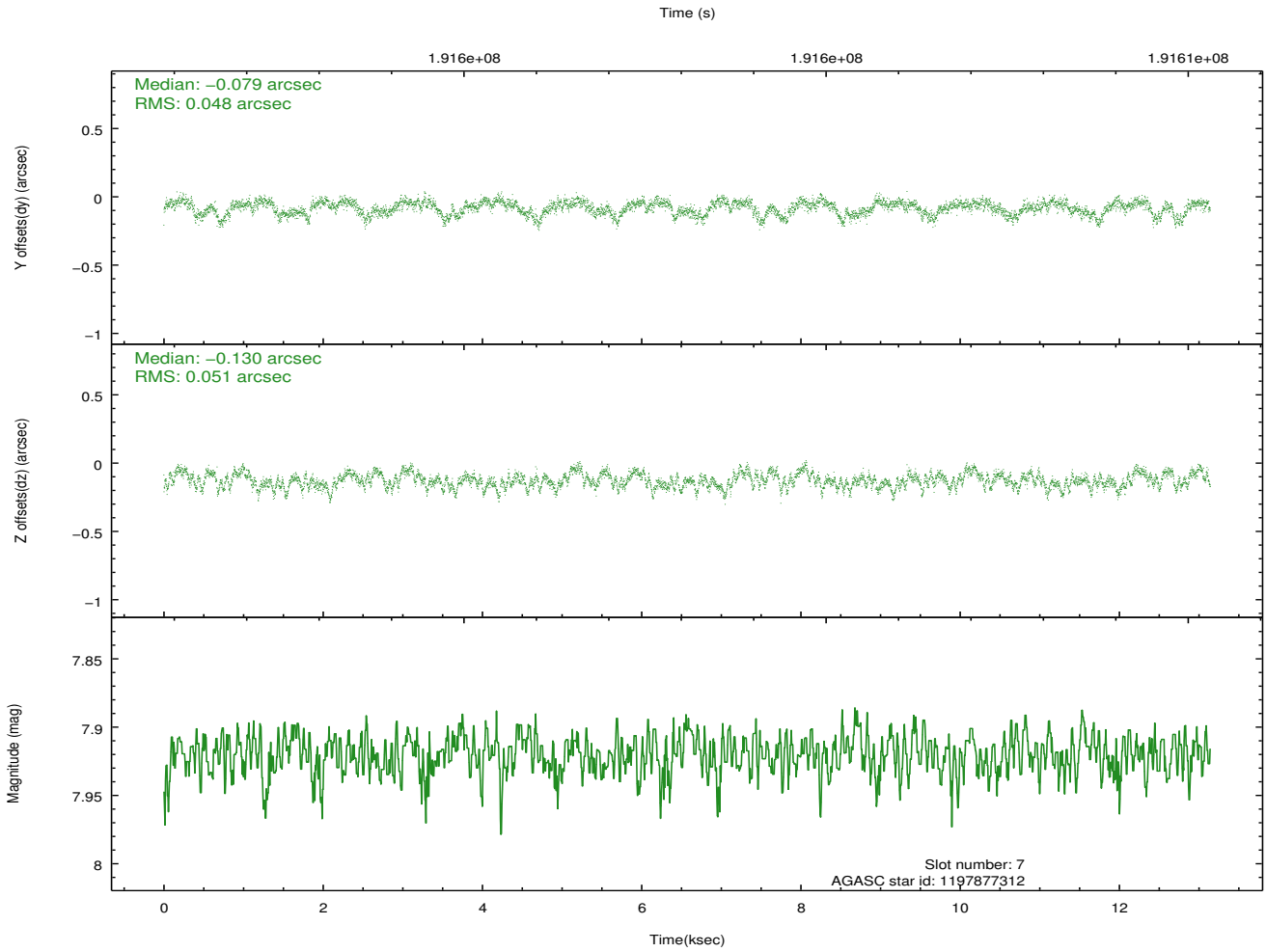
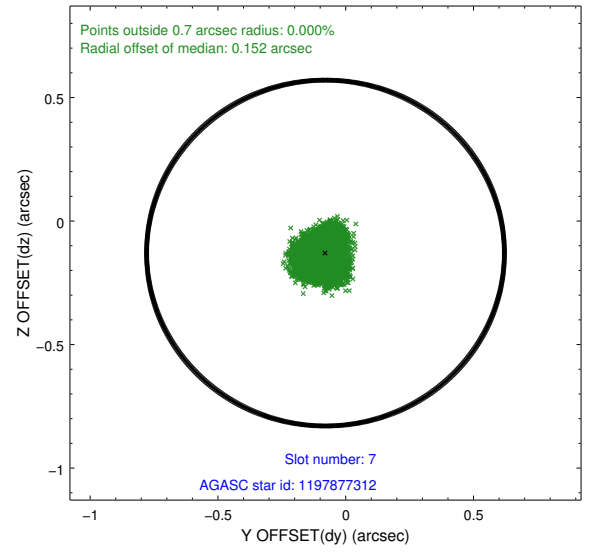
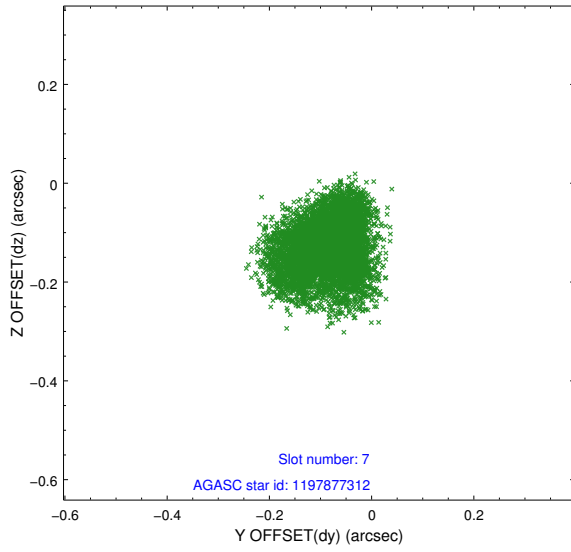
2.4.4 Slot 6



Time (s)

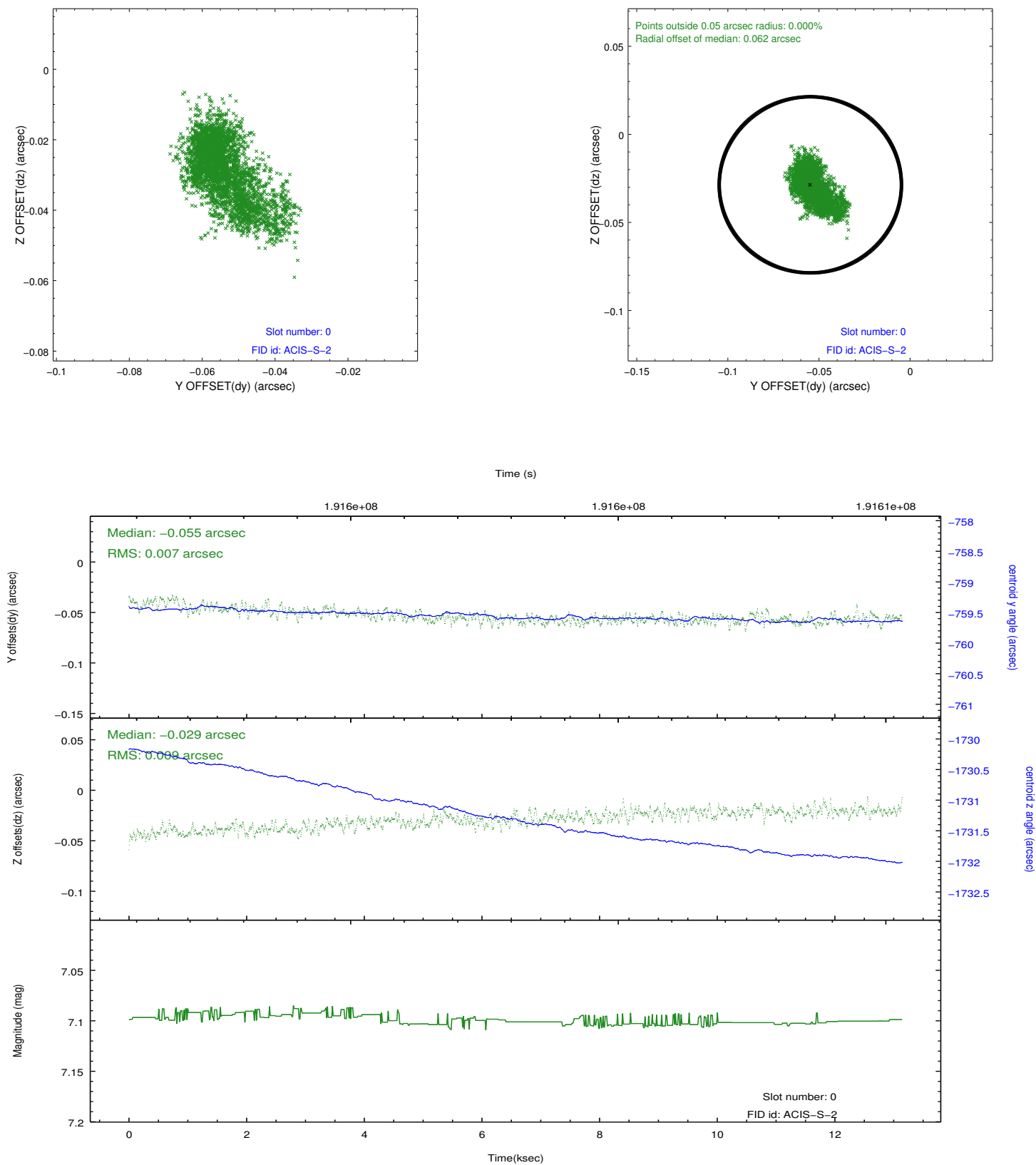


2.4.5 Slot 7

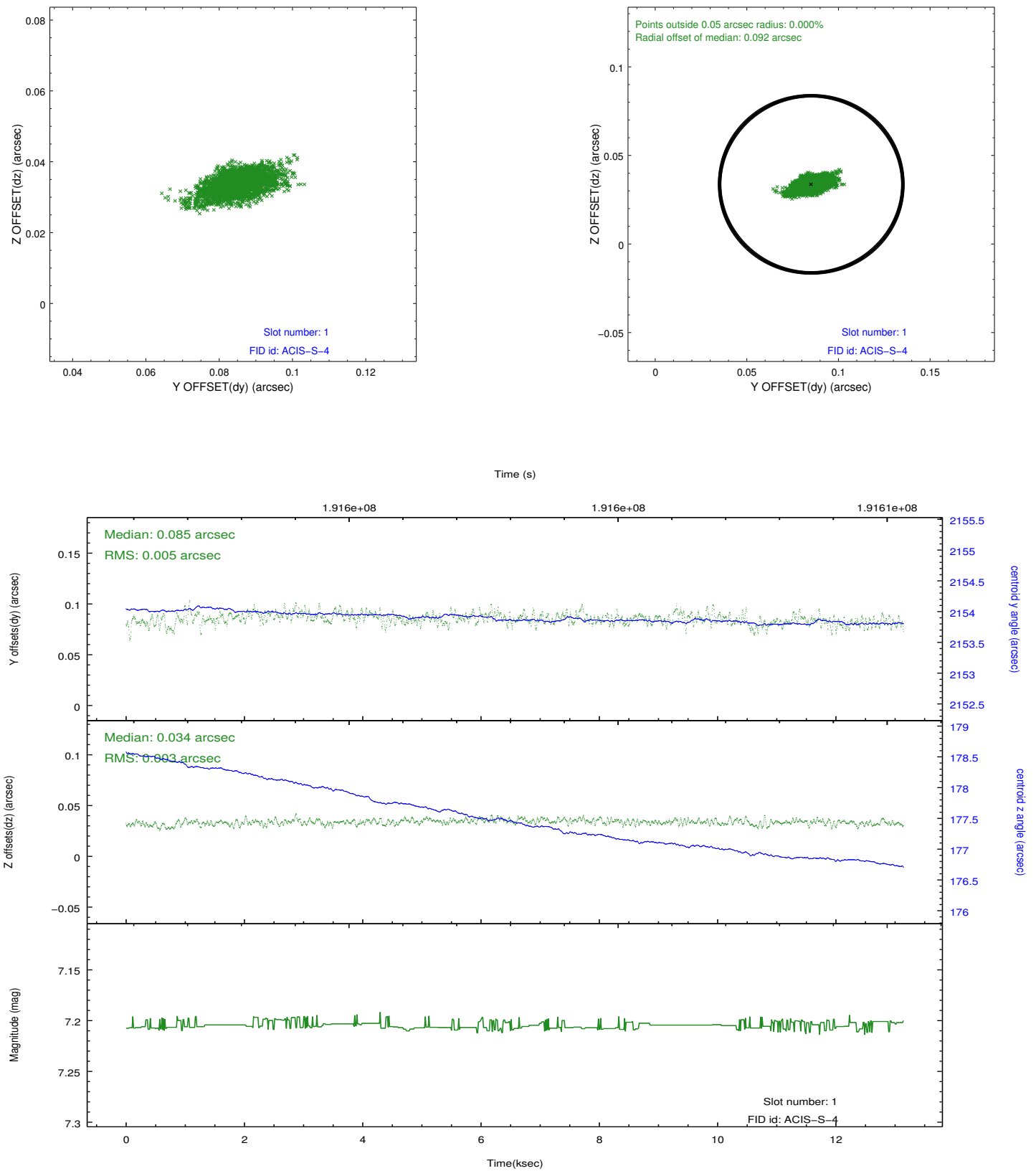


2.5 FID Slots

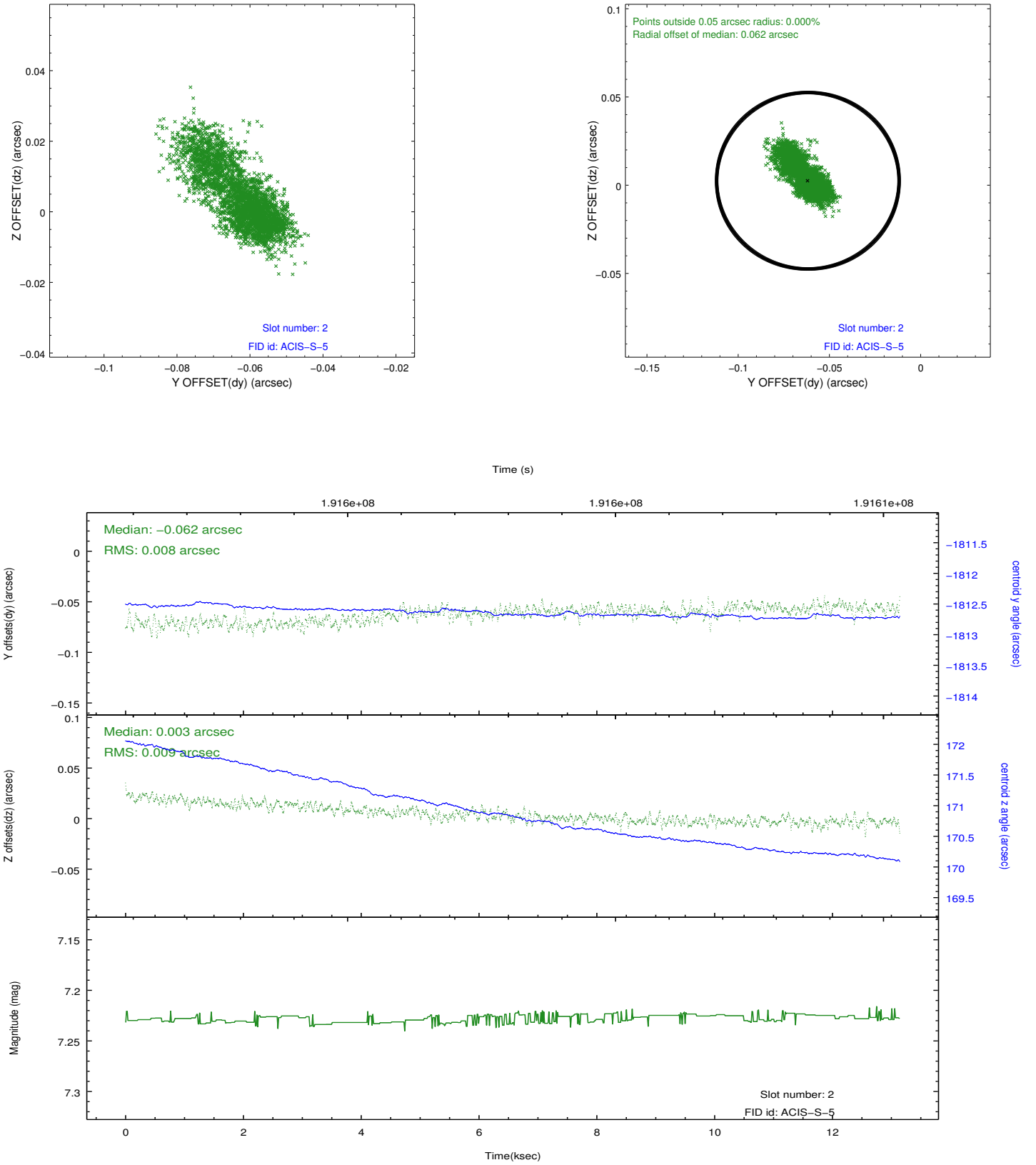
2.5.1 Slot 0



2.5.2 Slot 1



2.5.3 Slot 2



A Summary

A.1 Status

V&V Scientist	Beth Sundheim
V&V Date (YYYY-MM-DD)	2012.12.04
V&V Edition	1
V&V Disposition and Status	OK
V&V Charge Time	13.139

A.2 Comments

Joint proposal with HST.