

V&V Reference Report

L2 ASCDS Version : 7.6.7.2

Observation 5289 - L2 Version 001
Chandra X-Ray Center

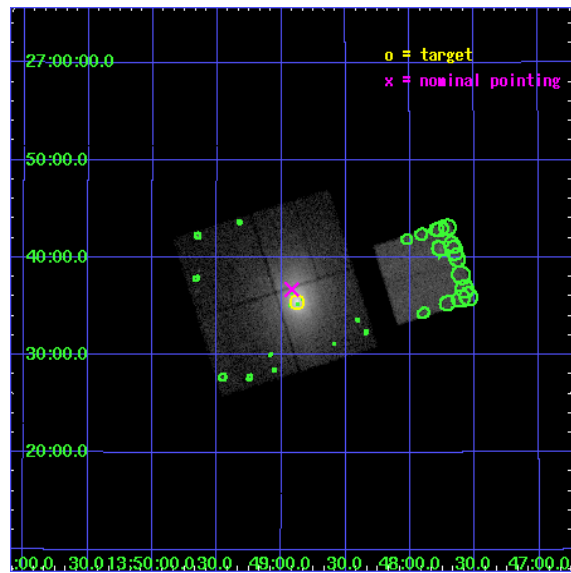
L2 Processing Date : Jun 6 2006

Contents

1	Front	2
2	OBI	3
2.1	OBI	3
2.1.1	Images	3
2.1.2	Bias	3
2.1.3	Parameters	4
2.1.4	Events	4
2.2	Compared Parameters	5
2.3	Aspect	6
2.4	Star Slots	9
2.4.1	Slot 3	9
2.4.2	Slot 4	10
2.4.3	Slot 5	11
2.4.4	Slot 6	12
2.4.5	Slot 7	13
2.5	FID Slots	14
2.5.1	Slot 0	14
2.5.2	Slot 1	15
2.5.3	Slot 2	16
3	Point Sources	17
A	Summary	18
A.1	Status	18
A.2	Comments	18

1 Front

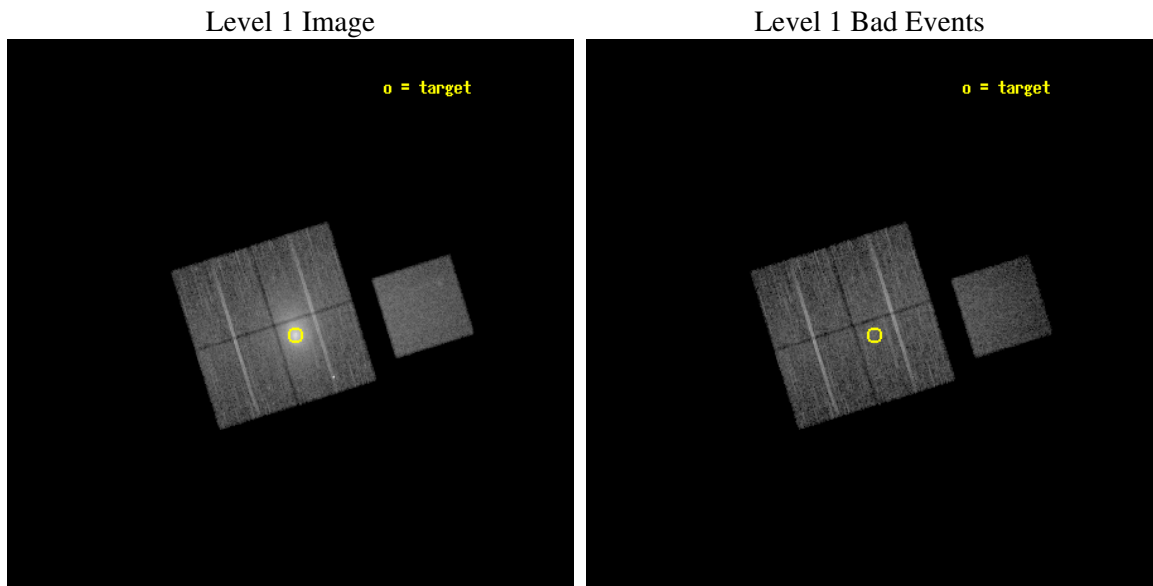
seq_num	890029
obs_id	5289
title	Mapping the Depth of the Contaminant on the ACIS Filters with Abell 11795
observer	Dr. CXC Calibration
object	A1795
dtcycle	0
cycle	P
ra_targ	207.219583
dec_targ	26.590833
ra_nom	207.2293676385
dec_nom	26.612487000866
roll_nom	72.664473256737
revision	3
ontime	15149.699970871
livetime	14951.757987705
ontime0	15146.558980733
ontime1	15146.558980703
ontime2	15149.699970871
ontime3	15149.699970871
ontime7	15149.699970871
l2events	200116



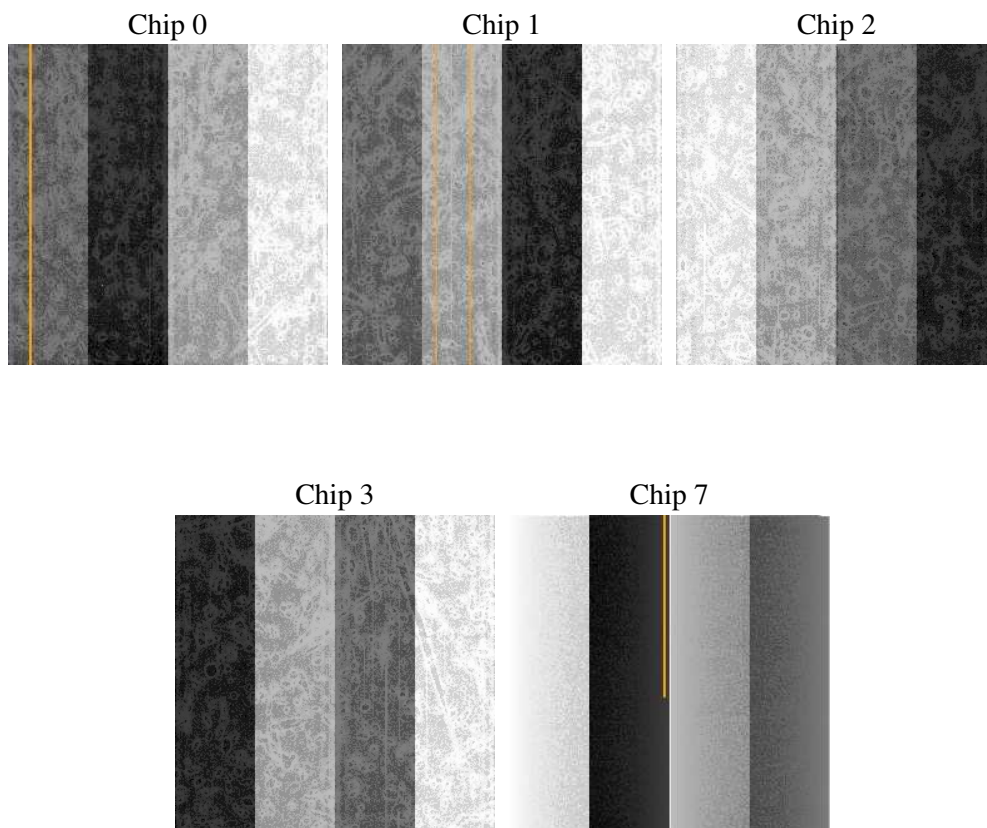
2 OBI

2.1 OBI

2.1.1 Images



2.1.2 Bias



2.1.3 Parameters

obi_num	1
ascdsver	7.6.7.2
caldsver	3.2.2
date	2006-06-06T21:49:27
revision	3

sched_exp_time	15000.000000
ontime	15416.039922416
ontime0	15412.898932278
ontime1	15412.898932248
ontime2	15416.039922416
ontime3	15416.039922416
ontime7	15416.039922416
l1events	555695

2.1.4 Events

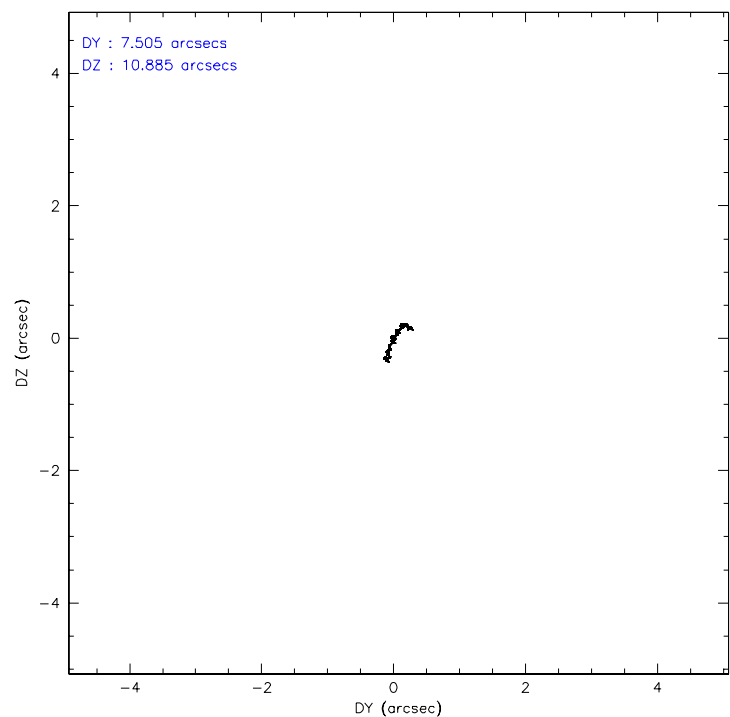
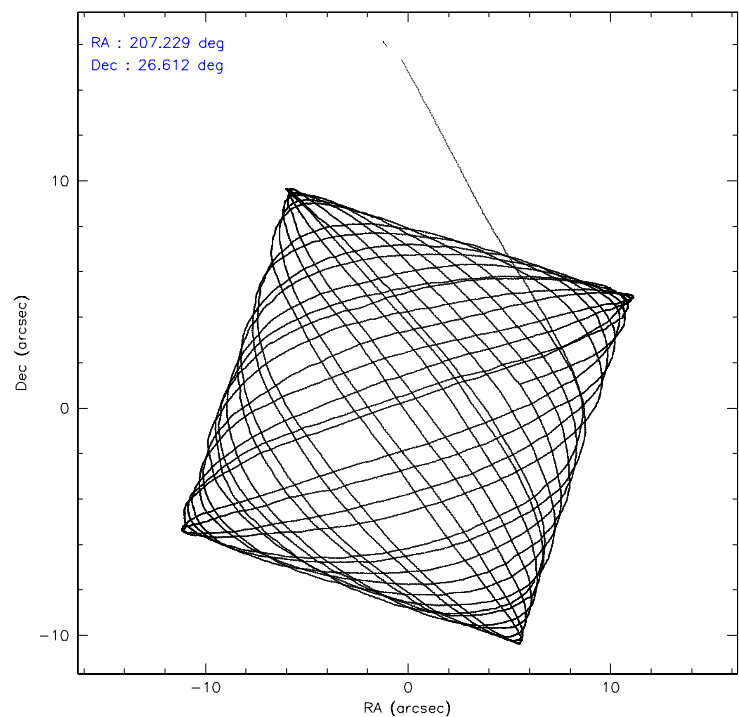
	ccd 0	ccd 1	ccd 2	ccd 3	ccd 7
level 1 events	82753	88215	108819	181553	94355
rejected events	68313	68030	76426	77050	53790
rejected %	82%	77%	70%	42%	57%

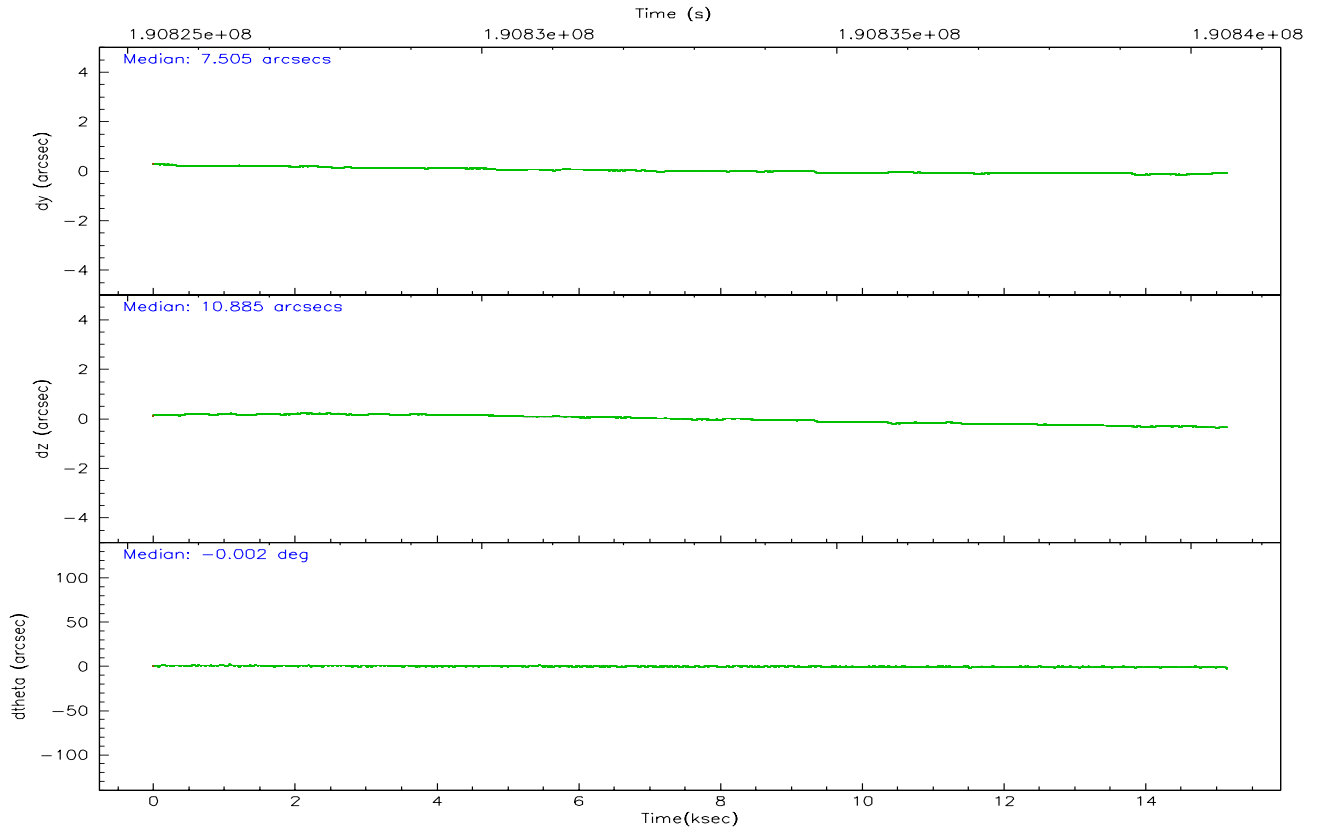
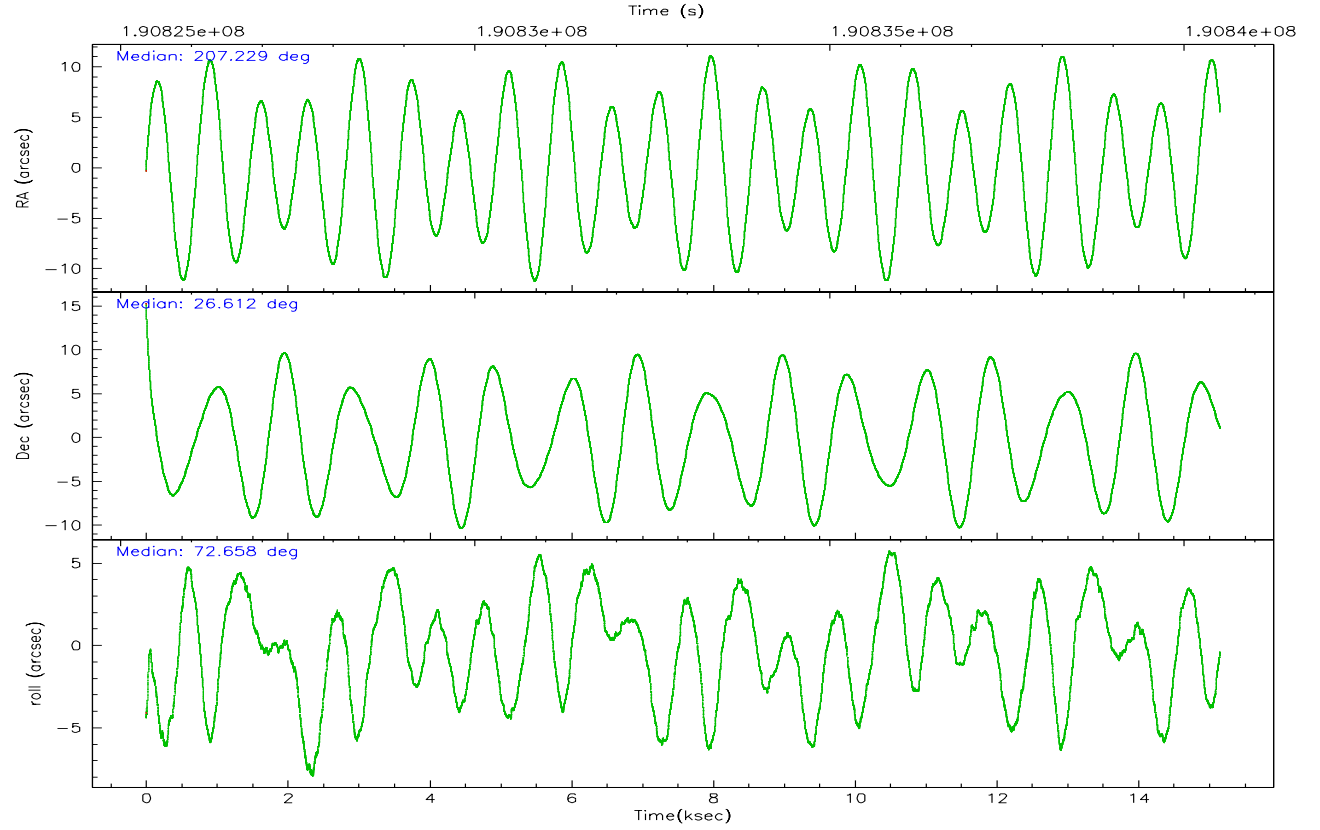
	ccd 0	ccd 1	ccd 2	ccd 3	ccd 7
grade 0 events	8033	12517	23726	84013	2911
	9%	14%	21%	46%	3%
grade 1 events	62	75	149	440	39
	0%	0%	0%	0%	0%
grade 2 events	2611	3062	4196	10730	10091
	3%	3%	3%	5%	10%
grade 3 events	1162	1396	1578	3625	2526
	1%	1%	1%	1%	2%
grade 4 events	1080	1339	1518	3715	2466
	1%	1%	1%	2%	2%
grade 5 events	2919	3217	2957	3596	7097
	3%	3%	2%	1%	7%
grade 6 events	1795	2171	1971	3628	23262
	2%	2%	1%	1%	24%
grade 7 events	65091	64438	72724	71806	45963
	78%	73%	66%	39%	48%

2.2 Compared Parameters

Parameter	Planned	Actual	Parameter	Planned	Actual
Instrument	ACIS	ACIS	Obspar format version number	6	6
Detector	ACIS-01237	ACIS-01237	Obspar file type	PREDICTED	ACTUAL
Grating	NONE	NONE	Obspar update status	NONE	UPDATED
Data mode	VFAINT	VFAINT	On-chip summing requested	N	N
Observation mode	POINTING	POINTING	Subarray requested	NONE	NONE
Pointing RA	207.236174	207.2293676384952	Alternating exposures requested	N	N
Pointing Dec	26.585796	26.61248700086585	Primary exposure time	0.000000	3.1
Pointing Roll	72.452745	72.66447325673747			
SIM focus pos (mm)	-0.782348	-0.7809083437167272			
SIM defocus (mm)	0	0.001439871863259334			
SIM translation stage pos (mm)	-230.252463	-230.248423740357			
SIM translation stage offset (mm)	-3.34	-3.34402926257269			
Observation start time	190825509.184000	190824396.10173			
Observation start date	2004-01-18T15:04:05	2004-01-18T14:46:36			
Observation end time	190840509.184000	190841668.37748			
Observation end date	2004-01-18T19:14:05	2004-01-18T19:34:28			
Read mode	TIMED	TIMED			

2.3 Aspect



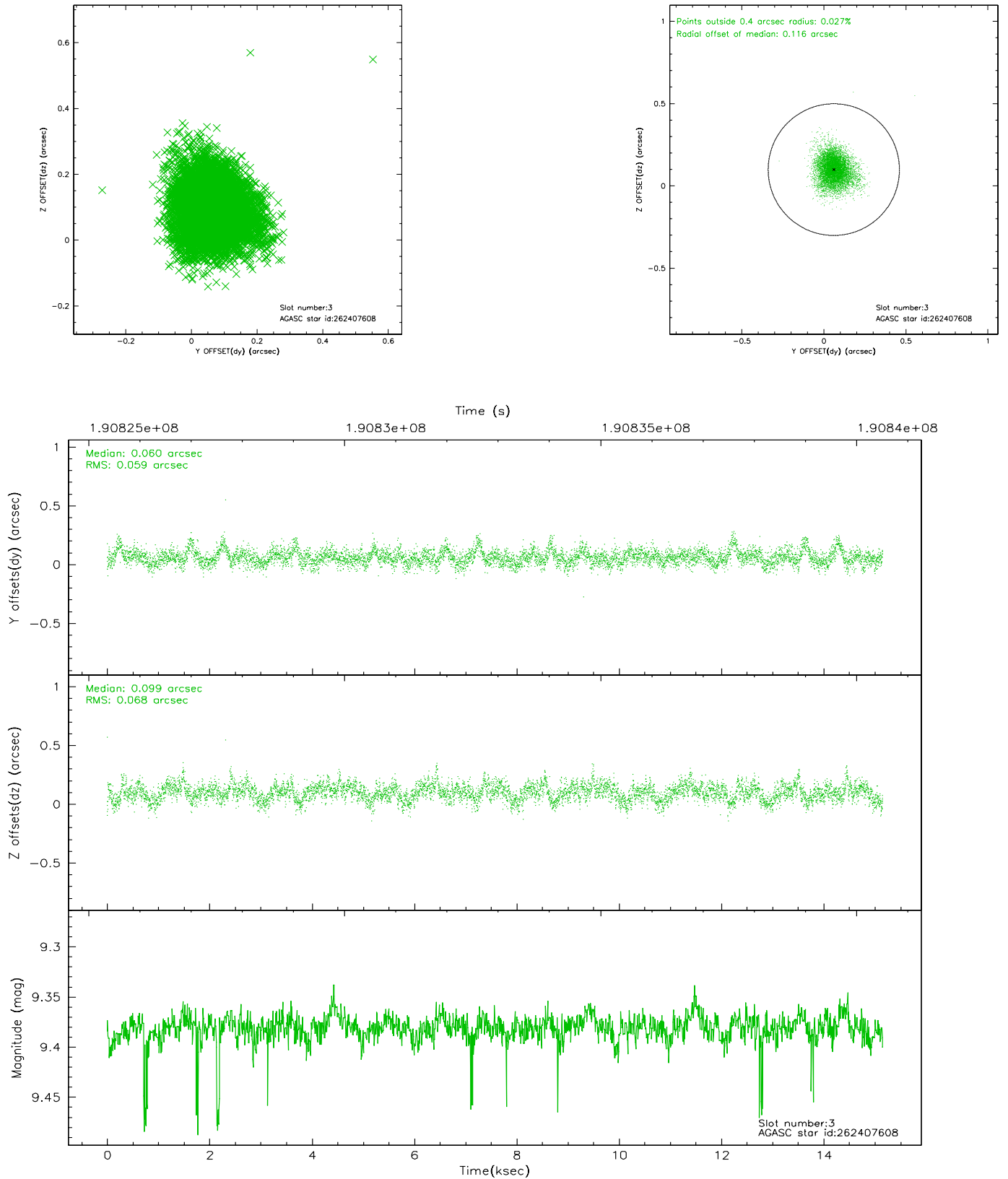


Slot Statistics

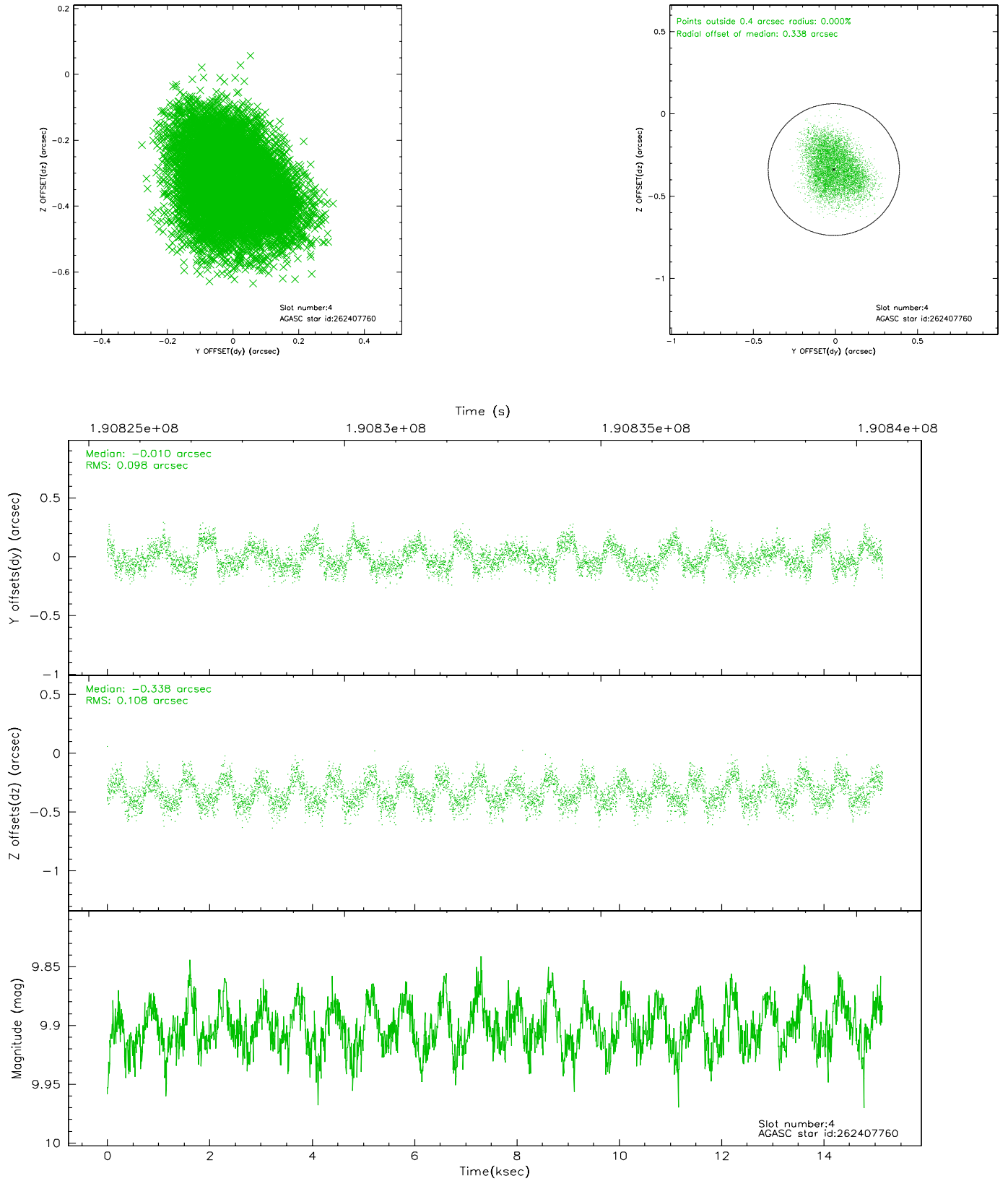
slot	status	id	mag	n_pts	med_dy	med_dz	dr1	dr2	ra	dec	mean_y	mean_z
0	FID	ACIS-I-1	7.23	3697	-0.002	0.047	0.009	0.015	0.000000	0.000000	932.06	-902.91
1	FID	ACIS-I-5	7.23	3697	-0.133	0.033	0.007	0.013	0.000000	0.000000	-1816.00	994.42
2	FID	ACIS-I-6	7.25	3697	0.044	-0.009	0.008	0.014	0.000000	0.000000	397.35	1639.21
3	GUIDE	262407608	9.38	7381	0.060	0.099	0.094	0.159	207.378401	26.435507	-376.99	-600.00
4	GUIDE	262407760	9.90	7385	-0.010	-0.338	0.158	0.240	206.566773	26.577263	-673.74	2047.19
5	GUIDE	262408096	9.36	7387	0.079	-0.114	0.120	0.369	207.011678	26.515421	-458.77	613.77
6	GUIDE	262408512	8.03	7392	-0.290	0.171	0.071	0.119	207.800210	27.128796	2412.59	-1131.81
7	GUIDE	262411960	9.68	7387	0.143	0.206	0.113	0.178	207.327895	25.881727	-2326.19	-1047.46

2.4 Star Slots

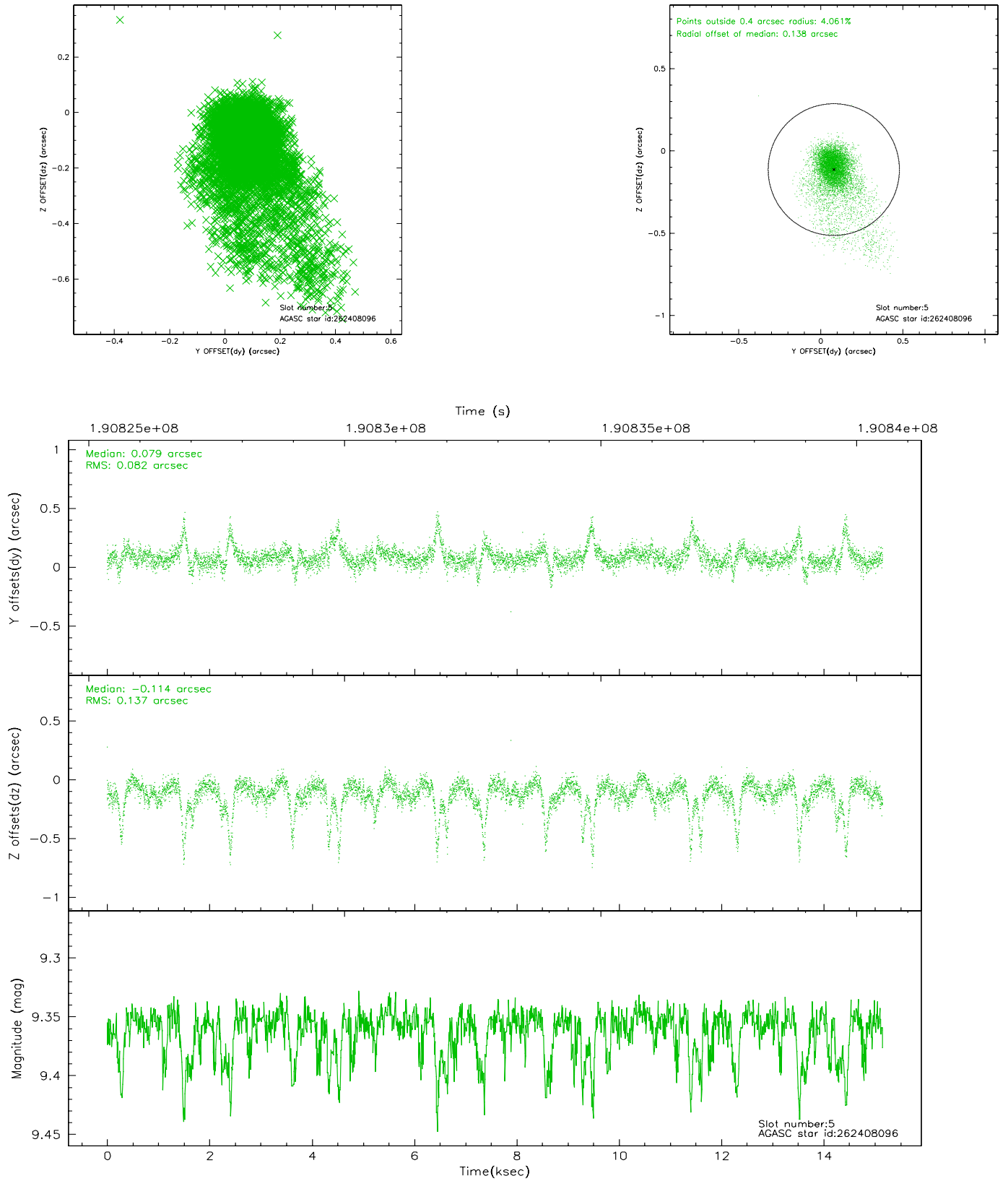
2.4.1 Slot 3



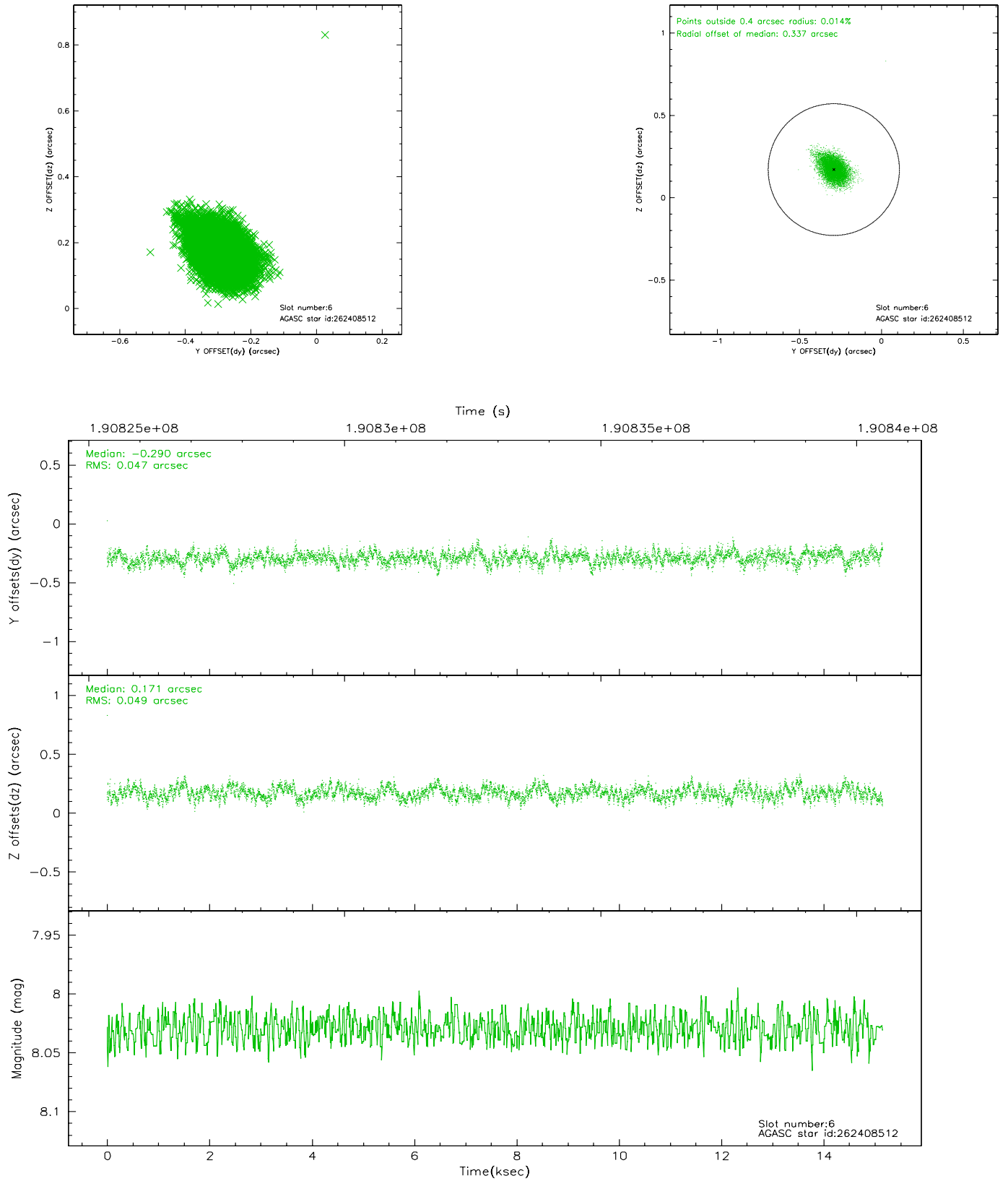
2.4.2 Slot 4



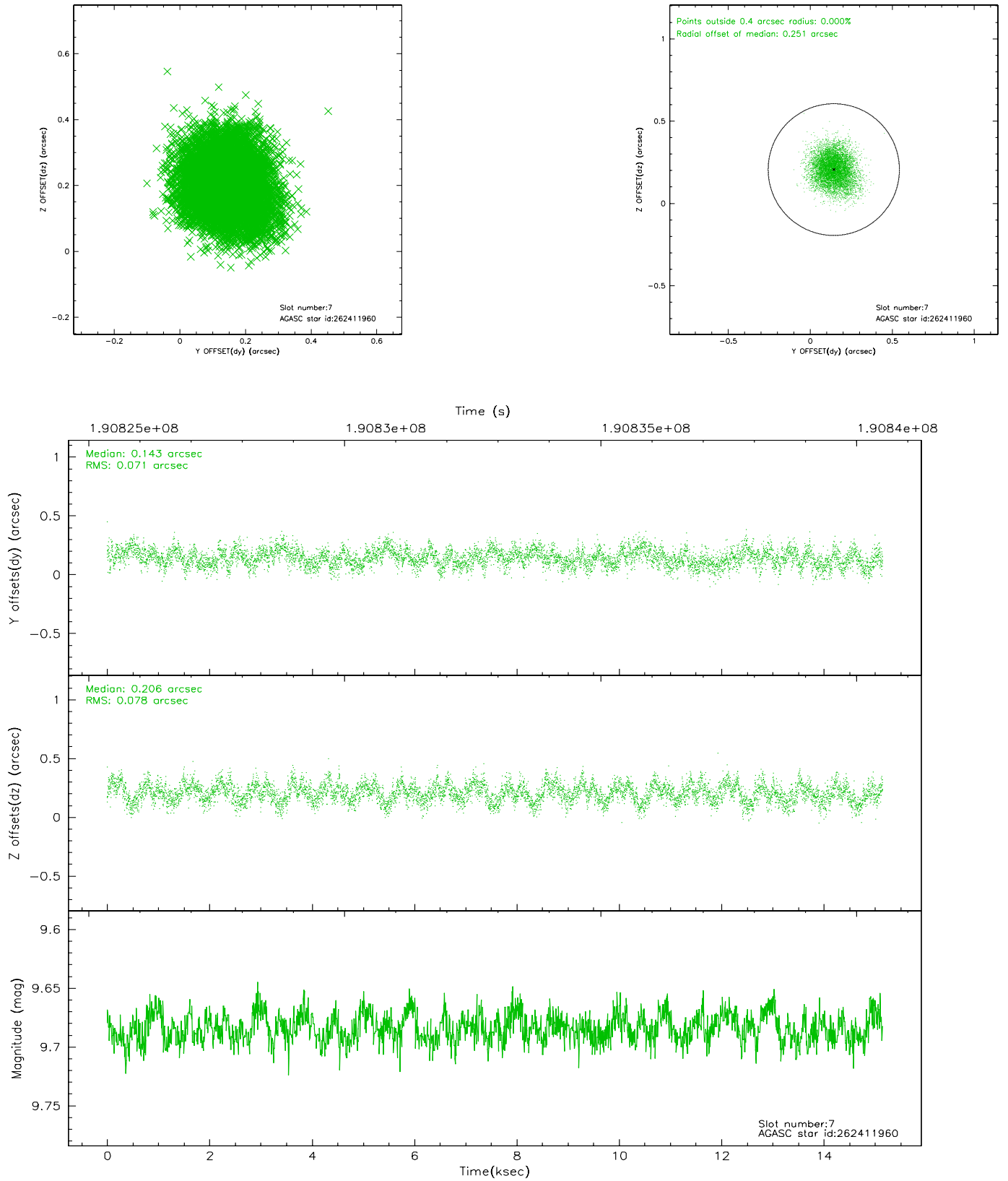
2.4.3 Slot 5



2.4.4 Slot 6

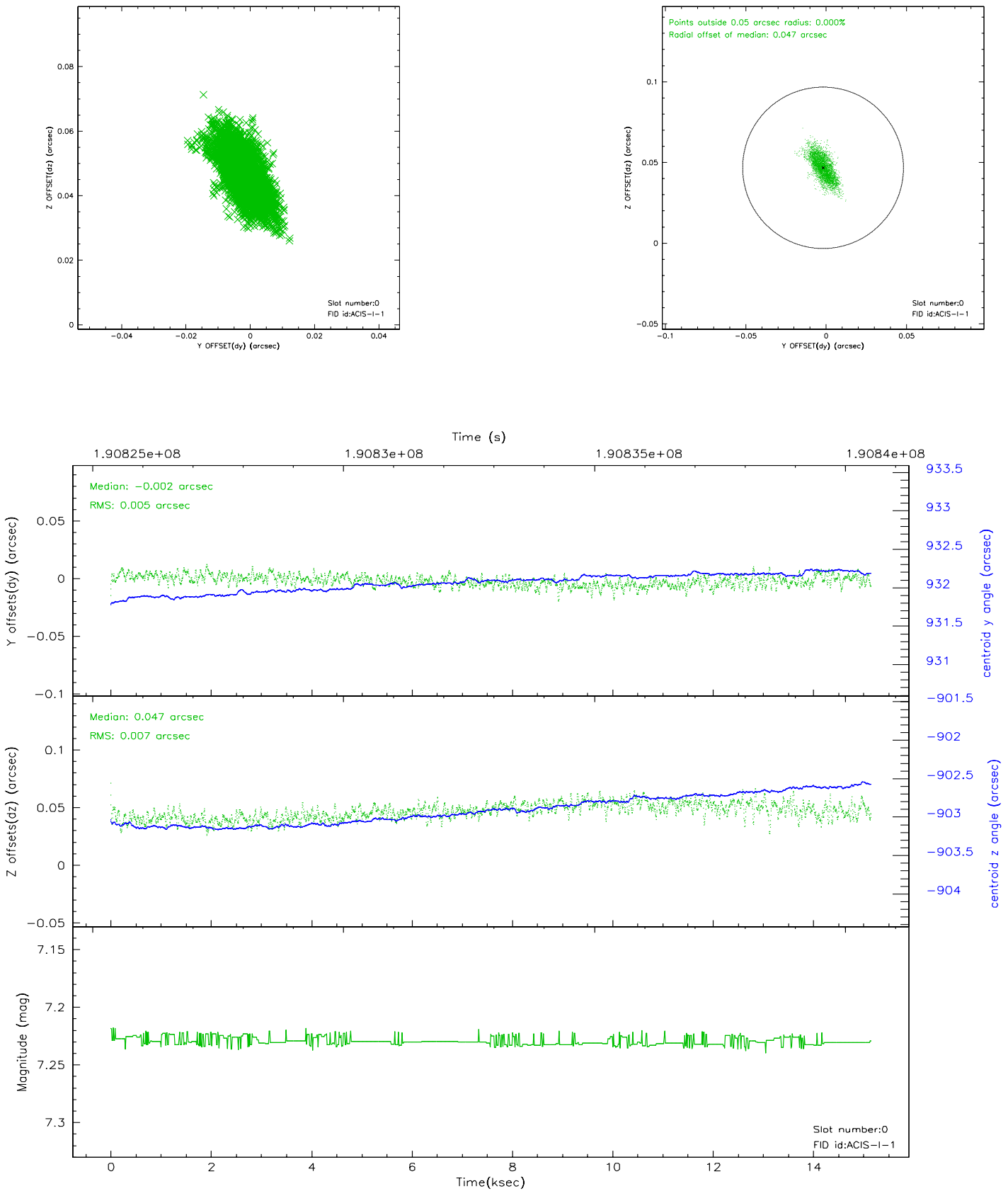


2.4.5 Slot 7

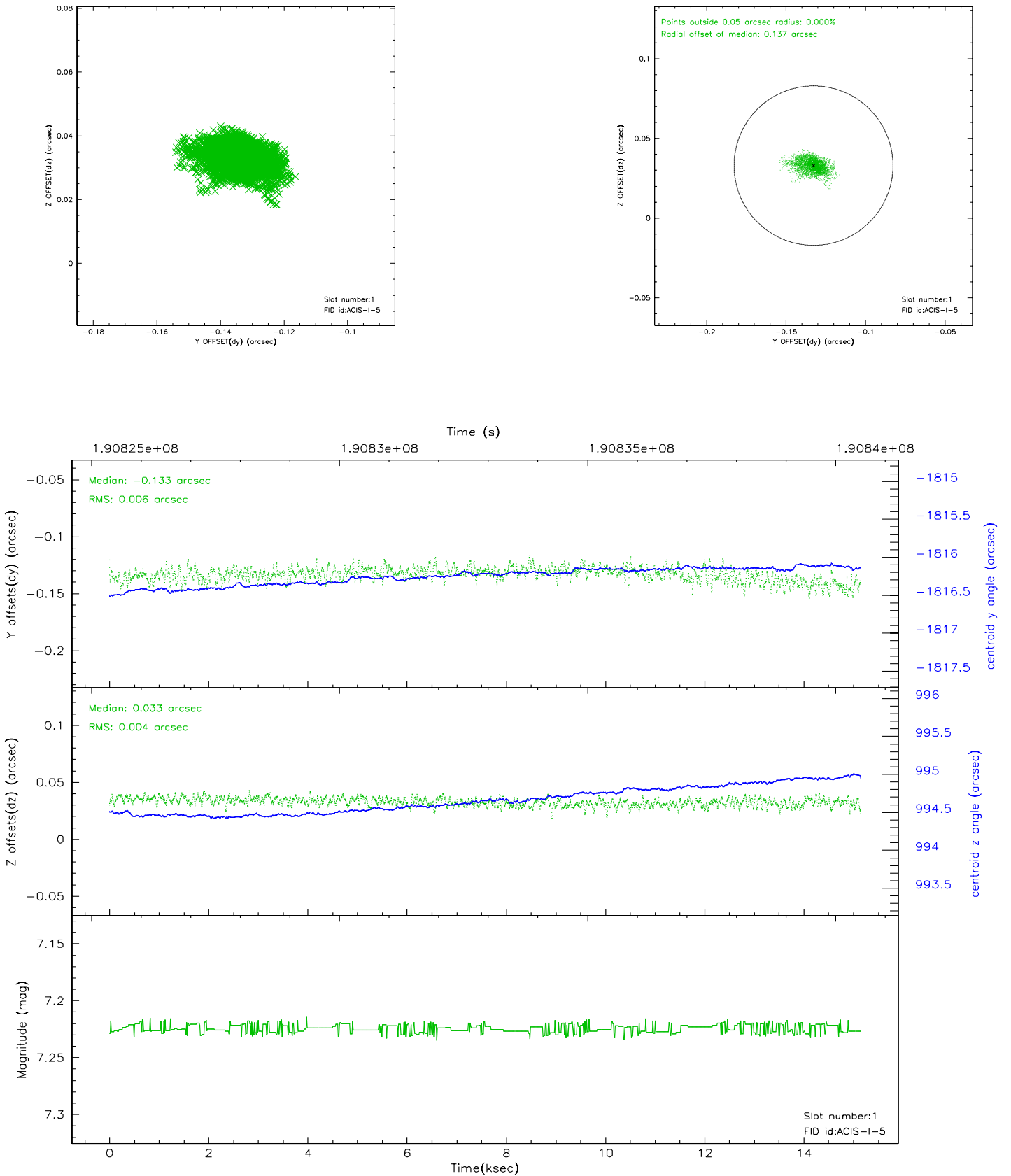


2.5 FID Slots

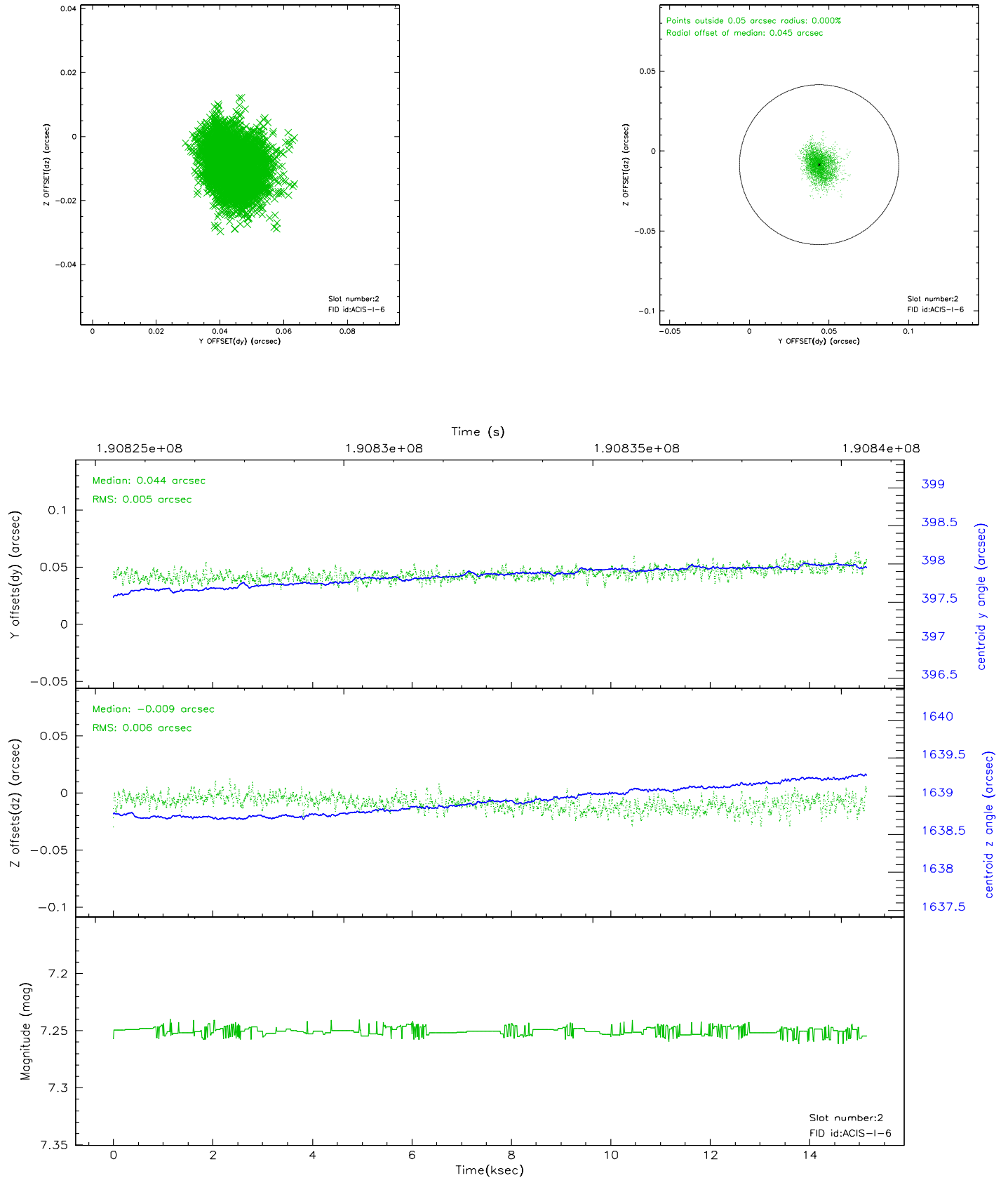
2.5.1 Slot 0



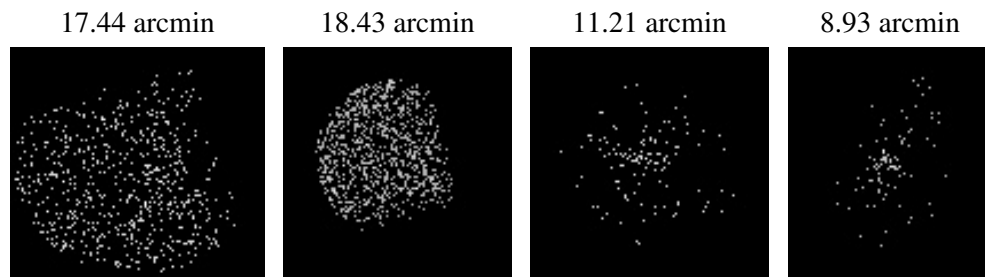
2.5.2 Slot 1



2.5.3 Slot 2



3 Point Sources



A Summary

A.1 Status

V&V Scientist	Jen Lauer
V&V Date (YYYY-MM-DD)	2006.06.07
V&V Edition	1
V&V Disposition and Status	OK
V&V Charge Time	15.149

A.2 Comments