

V&V Reference Report

L2 ASCDS Version : 10.3.3

Observation 51859 - L2 Version 1
Chandra X-Ray Center

L2 Processing Date : Jun 1 2015

Contents

1	Front	2
2	OBI	3
2.1	OBI	3
2.1.1	Images	3
2.1.2	Bias	3
2.1.3	Parameters	4
2.1.4	Events	4
2.2	Compared Parameters	5
2.3	Star Slots	6
2.4	FID Slots	6
A	Summary	7
A.1	Status	7
A.2	Comments	7

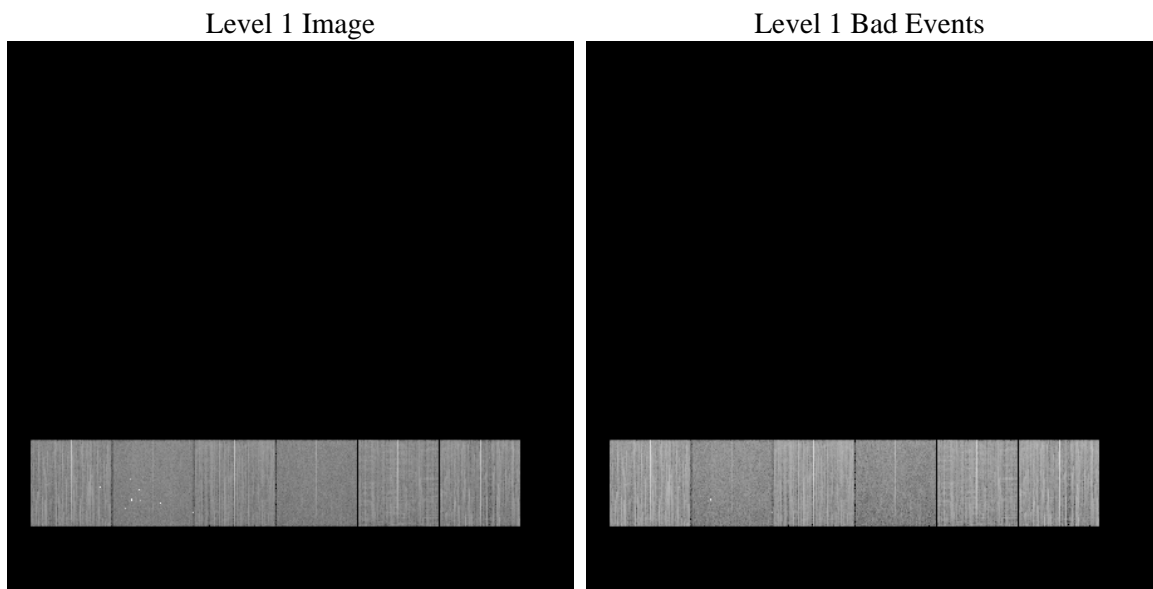
1 Front

seq_num	 	Sequence number
obs_id	51859	Observation id
title	ACIS-456789 diagnostics	Proposal title
observer	CHANDRA engineering request/realtime commanding	Principal investig
object	 	Source name
dtcycle	0	
cycle	P	events from which exps? Prim/Second/Both
ra_targ	0.0	Observer's specified target RA [deg]
dec_targ	0.0	Observer's specified target Dec [deg]
ra_nom	97.099040331977	Nominal RA [deg]
dec_nom	-34.325746592449	Nominal Dec [deg]
roll_nom	210.55259986171	Nominal Roll [deg]
revision	1	Processing version of data
ontime	8248.5211362839	Sum of GTIs [s]
livetime	8144.0733949931	Livetime [s]
ontime4	8248.3980162144	Sum of GTIs [s]
ontime5	8248.480096221	Sum of GTIs [s]
ontime6	8248.4390562773	Sum of GTIs [s]
ontime7	8248.5211362839	Sum of GTIs [s]
ontime8	8248.3569762707	Sum of GTIs [s]
ontime9	8248.5621762276	Sum of GTIs [s]
l2events	184214	Number of level 2 events

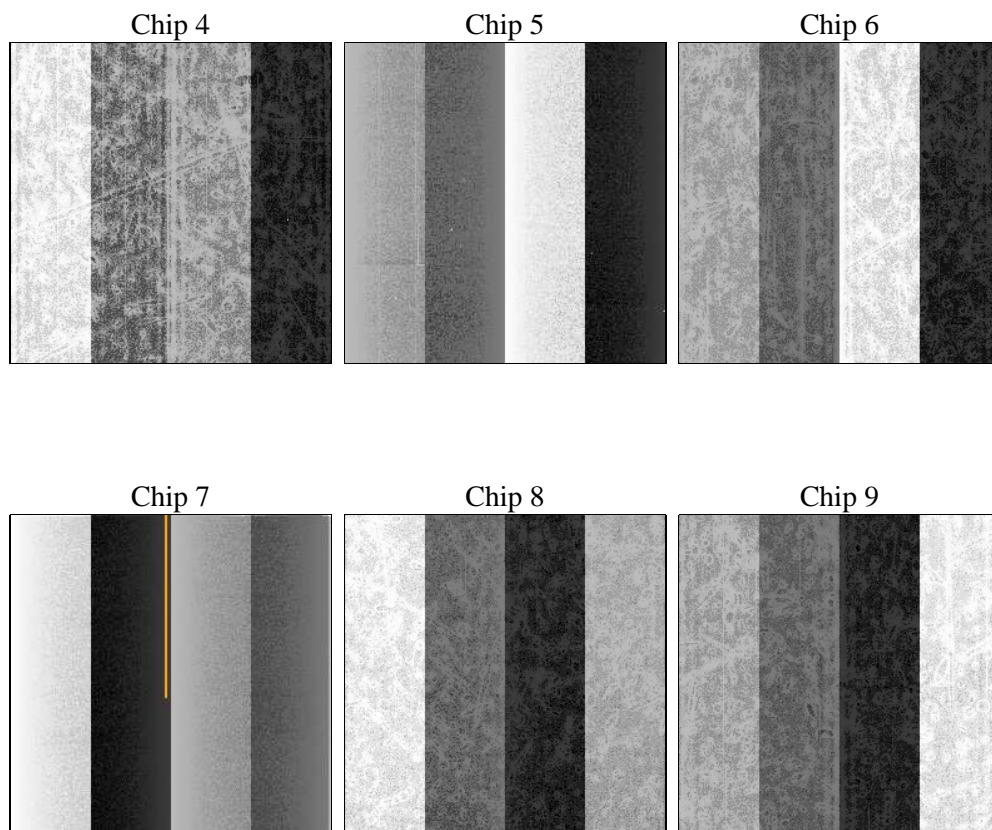
2 OBI

2.1 OBI

2.1.1 Images



2.1.2 Bias



2.1.3 Parameters

obi_num	1	Obi number	sched_exp_time	0.0	[s] Scheduled observation exposure time
ascdsver	10.3.3	Processing system revision	ontime	8248.5211362839	Sum of GTIs [s]
caldsver	4.6.7	 	ontime4	8248.3980162144	Sum of GTIs [s]
date	2015-06-01T13:09:00	Date and time of file creation	ontime5	8248.480096221	Sum of GTIs [s]
revision	1	Processing version of data	ontime6	8248.4390562773	Sum of GTIs [s]
			ontime7	8248.5211362839	Sum of GTIs [s]
			ontime8	8248.3569762707	Sum of GTIs [s]
			ontime9	8248.5621762276	Sum of GTIs [s]
			l1events	921718	Number of level 1 events

2.1.4 Events

	ccd 4	ccd 5	ccd 6	ccd 7	ccd 8	ccd 9		ccd 4	ccd 5	ccd 6	ccd 7	ccd 8	ccd 9
level 1 events	169367	136919	162782	118725	162025	171900	grade 0 events	14122	9126	9499	5655	13339	10763
rejected events	144101	76408	139379	70613	129678	148688		8%	6%	5%	4%	8%	6%
rejected %	85%	55%	85%	59%	80%	86%	grade 1 events	120	394	43	72	79	66
								0%	0%	0%	0%	0%	0%
							grade 2 events	4657	21335	6535	12182	7266	5060
								2%	15%	4%	10%	4%	2%
							grade 3 events	1689	1628	1376	3452	2497	1583
								0%	1%	0%	2%	1%	0%
							grade 4 events	1598	1494	1363	3336	2404	1548
								0%	1%	0%	2%	1%	0%
							grade 5 events	3148	5398	2795	6897	3896	3388
								1%	3%	1%	5%	2%	1%
							grade 6 events	3321	27153	4732	23671	6976	4340
								1%	19%	2%	19%	4%	2%
							grade 7 events	140712	70391	136439	63460	125568	145152
								83%	51%	83%	53%	77%	84%

2.2 Compared Parameters

Parameter	Planned	Actual	Parameter	Planned	Actual
Instrument	ACIS	ACIS	Obspar format version number	7	7
Detector	ACIS-456789	ACIS-456789	Obspar file type	PREDICTED	ACTUAL
Grating	NONE	NONE	Obspar update status	NONE	UPDATED
Data mode	FAINT	FAINT	Number of optional ACIS chips dropped	0	0
Observation mode	SECONDARY	SECONDARY	On-chip summing requested	N	N
[deg] Pointing RA	0	97.09904033197665	Subarray requested	NONE	NONE
[deg] Pointing Dec	0	-34.32574659244926	Alternating exposures requested	N	N
[deg] Pointing Roll	0.0	210.5525998617149	[s] Primary exposure time	3.2	3.2
[mm] SIM focus pos	-1.429586	-1.428180813131781			
[mm] SIM defocus	0.1037507710433287	0.1051558262725154			
[mm] SIM translation stage pos	250.455976	250.466033080201			
[mm] SIM translation stage offset	0	-0.01005468664627074			
[s] Observation start time (MET)	549479238.468124	549479237.44312			
Observation start date	2015-05-31T17:07:18	2015-05-31T17:07:17			
[s] Observation end time (MET)	549489068.218676	549489067.19368			
Observation end date	2015-05-31T19:51:08	2015-05-31T19:51:07			
Read mode	TIMED	TIMED			

2.3 Star Slots

2.4 FID Slots

A Summary

A.1 Status

V&V Scientist	Jen Lauer
V&V Date (YYYY-MM-DD)	2015.06.01
V&V Edition	1
V&V Disposition and Status	OK
V&V Charge Time	8.2485211362839

A.2 Comments