

# V&V Reference Report

## L2 ASCDS Version : 7.6.8

Observation 5149 - L2 Version 001  
Chandra X-Ray Center

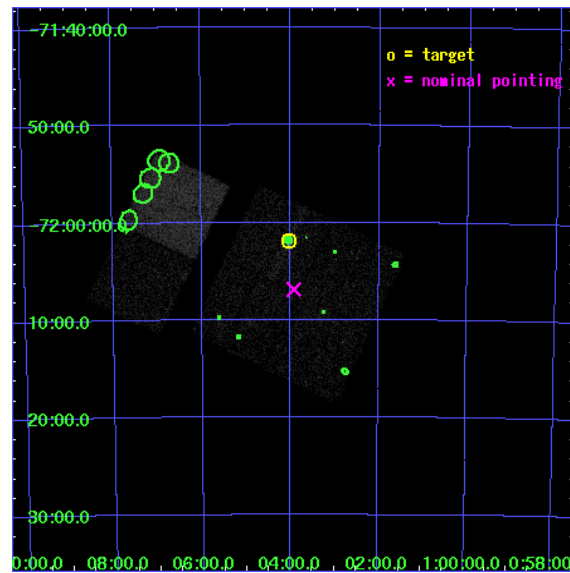
L2 Processing Date : Jun 22 2006

## Contents

<b>1</b>	<b>Front</b>	<b>2</b>
<b>2</b>	<b>OBI</b>	<b>3</b>
2.1	OBI . . . . .	3
2.1.1	Images . . . . .	3
2.1.2	Bias . . . . .	3
2.1.3	Parameters . . . . .	4
2.1.4	Events . . . . .	4
2.2	Compared Parameters . . . . .	5
2.3	Aspect . . . . .	6
2.4	Star Slots . . . . .	9
2.4.1	Slot 3 . . . . .	9
2.4.2	Slot 4 . . . . .	10
2.4.3	Slot 5 . . . . .	11
2.4.4	Slot 6 . . . . .	12
2.4.5	Slot 7 . . . . .	13
2.5	FID Slots . . . . .	14
2.5.1	Slot 0 . . . . .	14
2.5.2	Slot 1 . . . . .	15
2.5.3	Slot 2 . . . . .	16
<b>3</b>	<b>Point Sources</b>	<b>17</b>
<b>A</b>	<b>Summary</b>	<b>18</b>
A.1	Status . . . . .	18
A.2	Comments . . . . .	18

# 1 Front

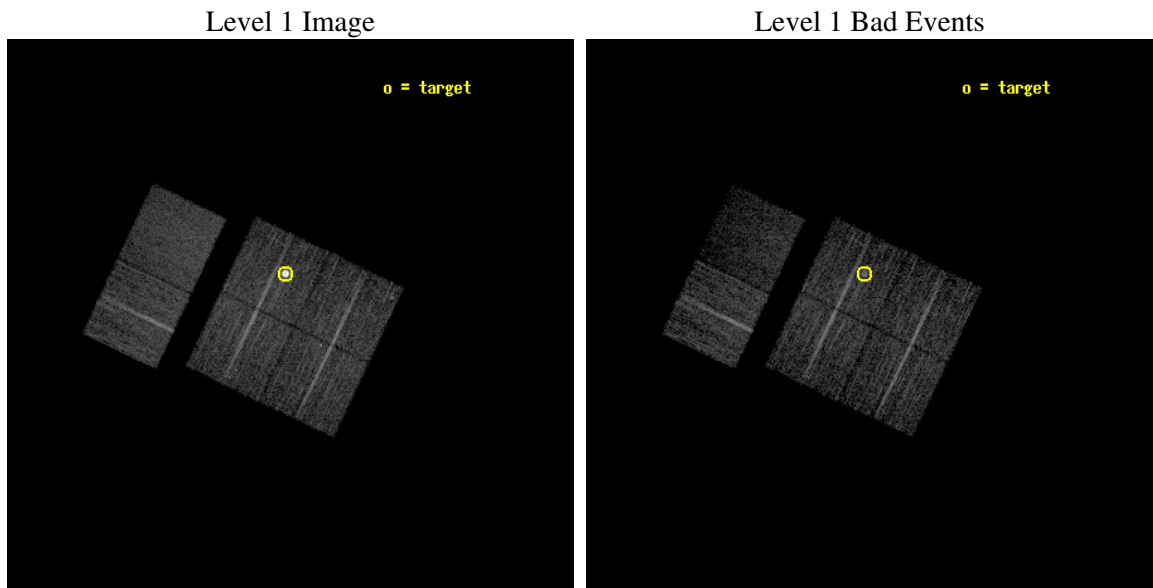
seq_num	590347
obs_id	5149
title	AO5A ACIS-I Calibration Observations of E0102-72
observer	Dr. CXC Calibration
object	E0102-72[I3,-120,-4.0,2.5,0]
dtcycle	0
cycle	P
ra_targ	16.01
dec_targ	-72.032028
ra_nom	15.980858903964
dec_nom	-72.114746102433
roll_nom	295.52060329245
revision	2
ontime	7667.1589812636
livetime	7570.072797634
ontime0	7670.3999714255
ontime1	7670.3999714255
ontime2	7670.3999714255
ontime3	7667.1589812636
ontime6	7670.3999714255
ontime7	7670.3999714255
l2events	55632



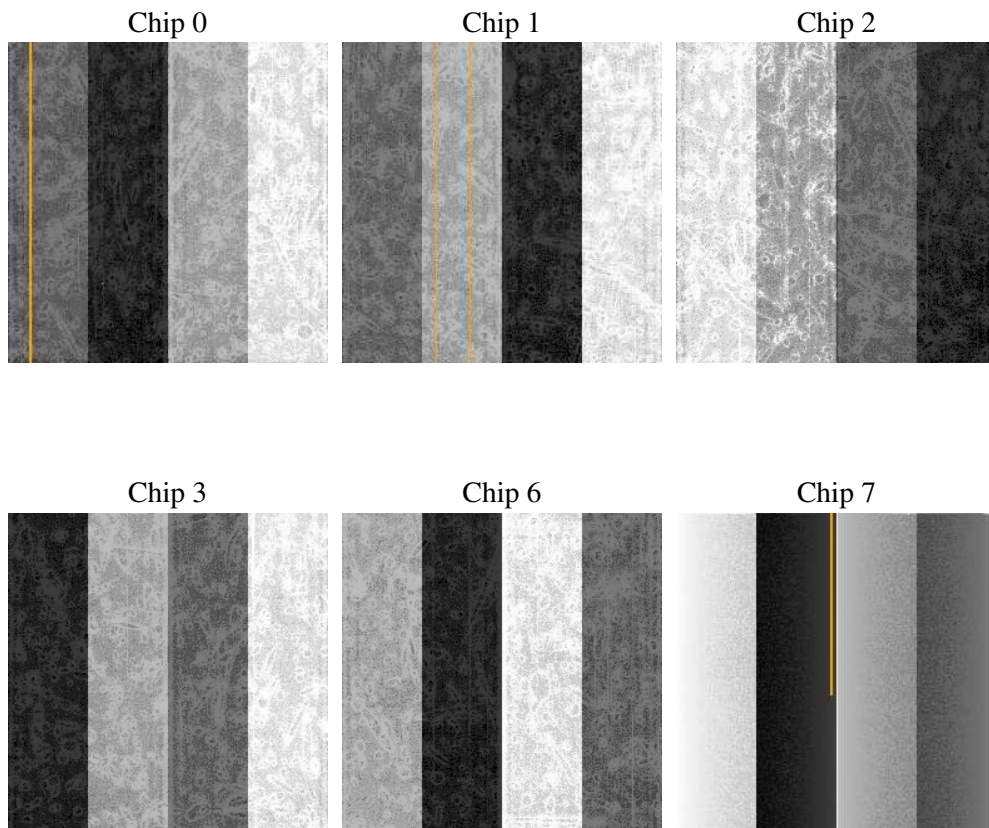
## 2 OBI

### 2.1 OBI

#### 2.1.1 Images



#### 2.1.2 Bias



### 2.1.3 Parameters

obi_num	0
ascdsver	7.6.8
caldsver	3.2.2
date	2006-06-22T04:14:11
revision	2

sched_exp_time	7913.000000
ontime	7671.450073272
ontime0	7674.6910634339
ontime1	7674.6910634339
ontime2	7674.6910434961
ontime3	7671.450073272
ontime6	7674.6910434961
ontime7	7674.6910634339
l1events	242093

### 2.1.4 Events

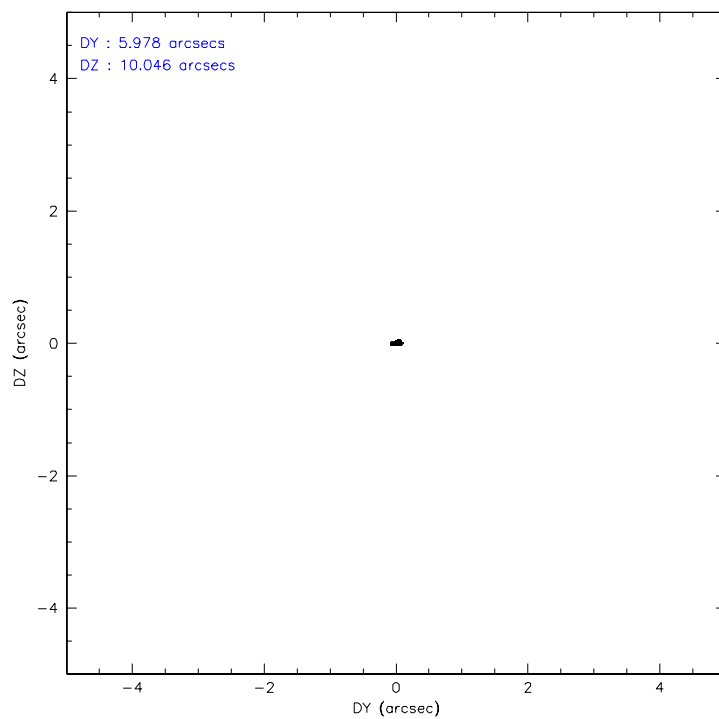
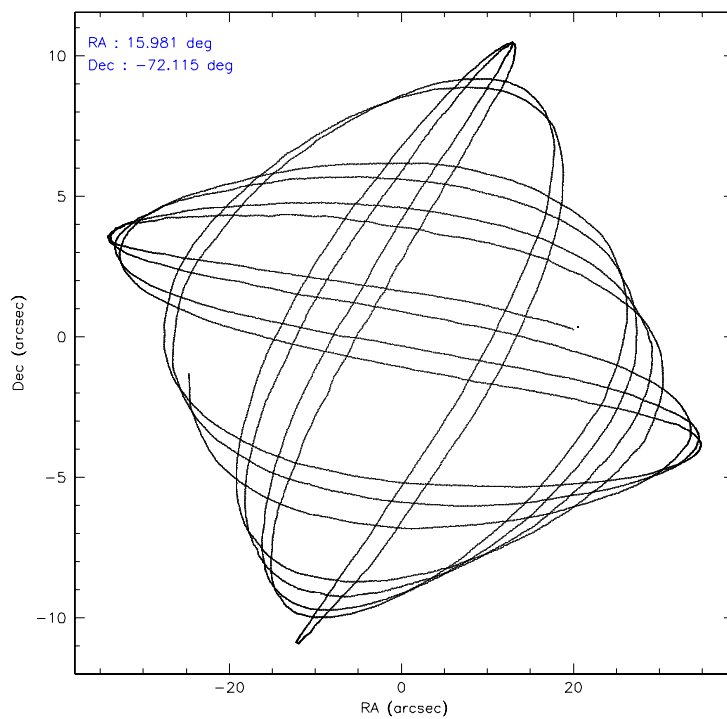
	ccd 0	ccd 1	ccd 2	ccd 3	ccd 6	ccd 7
level 1 events	34500	34841	37349	59728	40003	35672
rejected events	30313	30740	33268	31805	36139	19031
rejected %	87%	88%	89%	53%	90%	53%

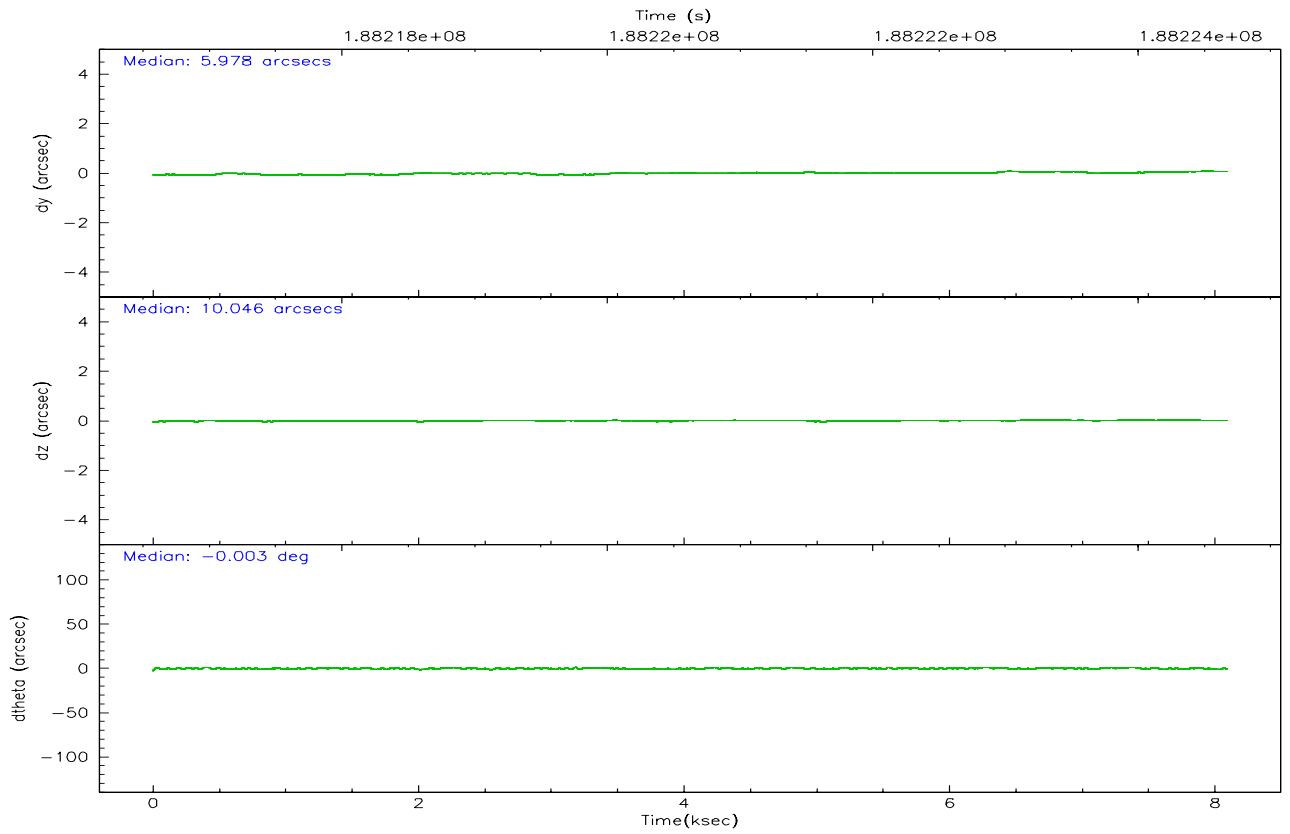
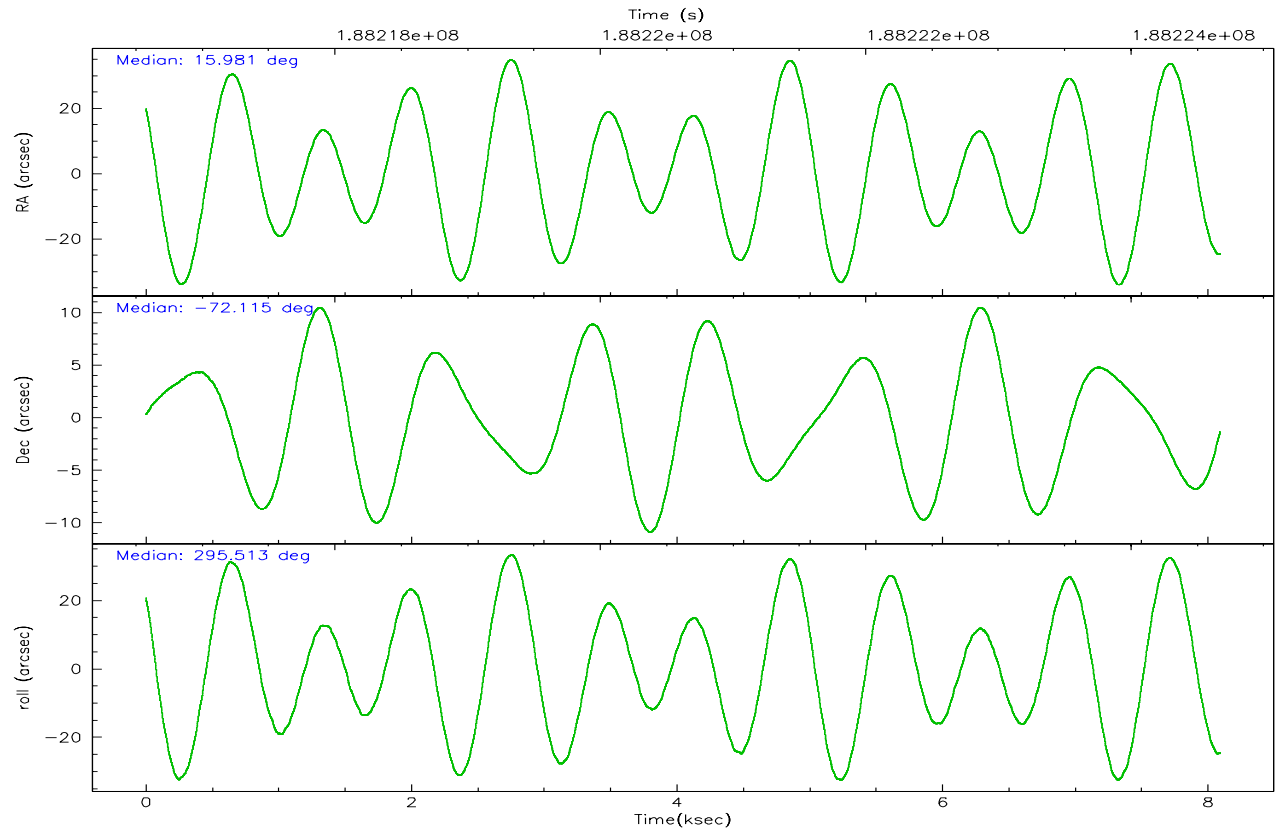
	ccd 0	ccd 1	ccd 2	ccd 3	ccd 6	ccd 7
grade 0 events	1827	1647	1872	23068	1417	1253
	5%	4%	5%	38%	3%	3%
grade 1 events	13	15	20	168	14	22
	0%	0%	0%	0%	0%	0%
grade 2 events	874	800	834	2426	842	4343
	2%	2%	2%	4%	2%	12%
grade 3 events	472	455	401	848	421	1069
	1%	1%	1%	1%	1%	2%
grade 4 events	408	433	430	838	406	1034
	1%	1%	1%	1%	1%	2%
grade 5 events	1105	1197	1037	1272	1349	2845
	3%	3%	2%	2%	3%	7%
grade 6 events	610	770	544	766	780	8967
	1%	2%	1%	1%	1%	25%
grade 7 events	29191	29524	32211	30342	34774	16139
	84%	84%	86%	50%	86%	45%

## 2.2 Compared Parameters

Parameter	Planned	Actual	Parameter	Planned	Actual
Instrument	ACIS	ACIS	Obspar format version number	6	6
Detector	ACIS-012367	ACIS-012367	Obspar file type	PREDICTED	ACTUAL
Grating	NONE	NONE	Obspar update status	NONE	UPDATED
Data mode	VFAINT	VFAINT	On-chip summing requested	N	N
Observation mode	POINTING	POINTING	Subarray requested	NONE	NONE
Pointing RA	15.907343	15.98085890396402	Alternating exposures requested	N	N
Pointing Dec	-72.099315	-72.11474610243329	Primary exposure time	0.000000	3.2
Pointing Roll	295.241955	295.5206032924517			
Window start time	181353664.184000	181353664.184000			
Window stop time	189216064.184000	189216064.184000			
SIM focus pos (mm)	-0.782348	-0.7809083437167272			
SIM defocus (mm)	0	0.001439871863259334			
SIM translation stage pos (mm)	-233.592463	-233.5874344608287			
SIM translation stage offset (mm)	0	-0.005018542100998502			
Observation start time	188216754.184000	188216378.30073			
Observation start date	2003-12-19T10:24:50	2003-12-19T10:19:38			
Observation end time	188224667.184000	188224801.7511			
Observation end date	2003-12-19T12:36:43	2003-12-19T12:40:01			
Read mode	TIMED	TIMED			

## 2.3 Aspect





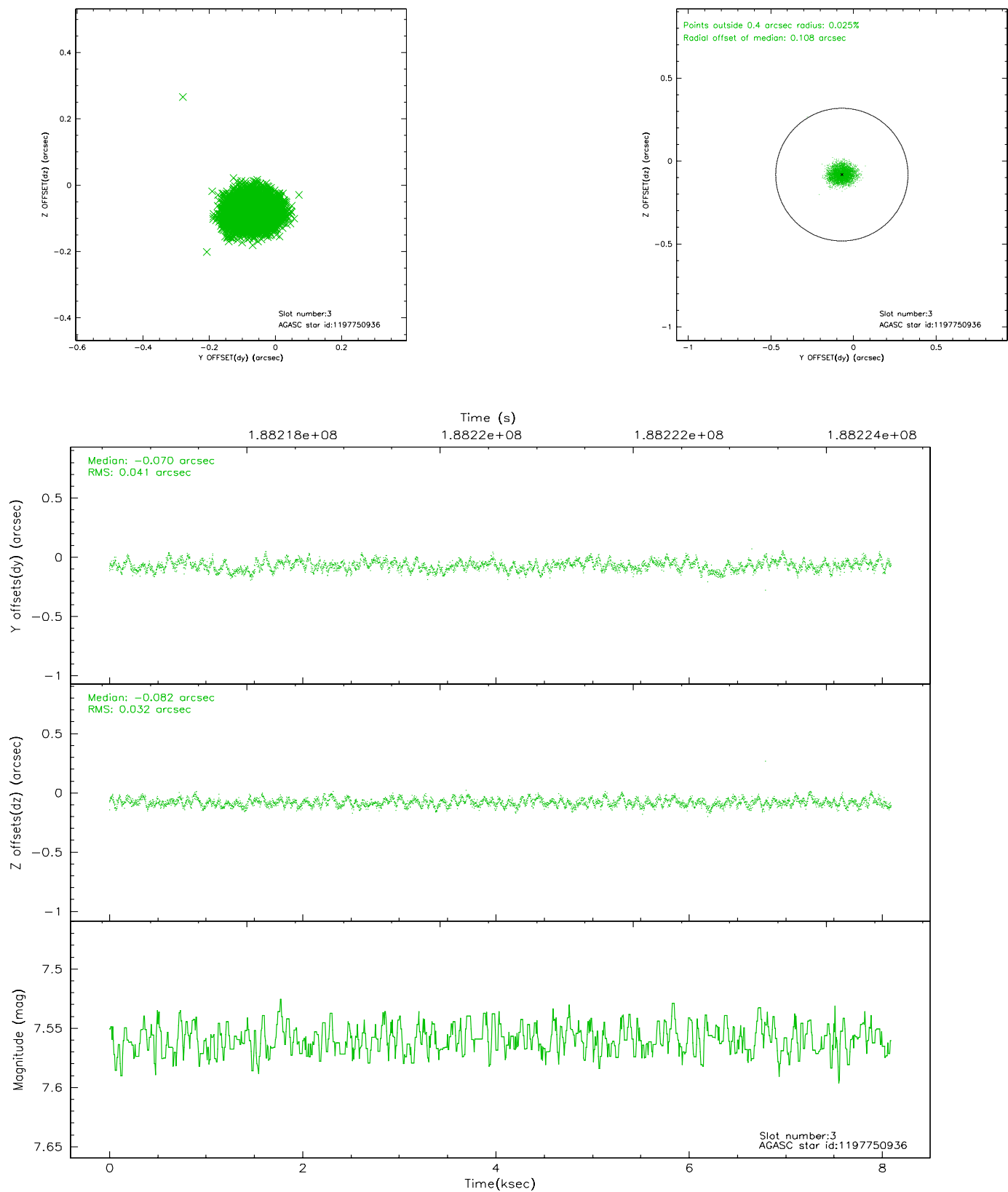
### Slot Statistics

slot	status	id	mag	n_pts	med_dy	med_dz	dr1	dr2	ra	dec	mean_y	mean_z
0	FID	ACIS-I-1	7.24	1974	0.011	0.019	0.006	0.011	0.000000	0.000000	933.77	-833.48
1	FID	ACIS-I-5	7.23	1974	-0.036	0.070	0.009	0.015	0.000000	0.000000	-1814.05	1063.65
2	FID	ACIS-I-6	7.24	1974	-0.068	-0.018	0.010	0.018	0.000000	0.000000	398.42	1708.90
3	GUIDE	1197750936	7.56	3948	-0.070	-0.082	0.056	0.089	15.387940	-71.549550	-2039.99	307.57
4	GUIDE	1197884536	8.49	3947	0.004	0.049	0.071	0.114	17.160729	-71.835289	-247.23	1671.75
5	GUIDE	1197885104	9.35	3946	0.116	0.028	0.097	0.155	17.845067	-72.189368	1234.24	1777.42
6	GUIDE	1197885328	7.24	3948	-0.006	-0.032	0.057	0.093	16.283090	-71.733943	-1007.39	944.89
7	GUIDE	1198189696	7.38	3947	-0.041	0.033	0.059	0.095	15.223750	-72.697522	1639.74	-1581.38

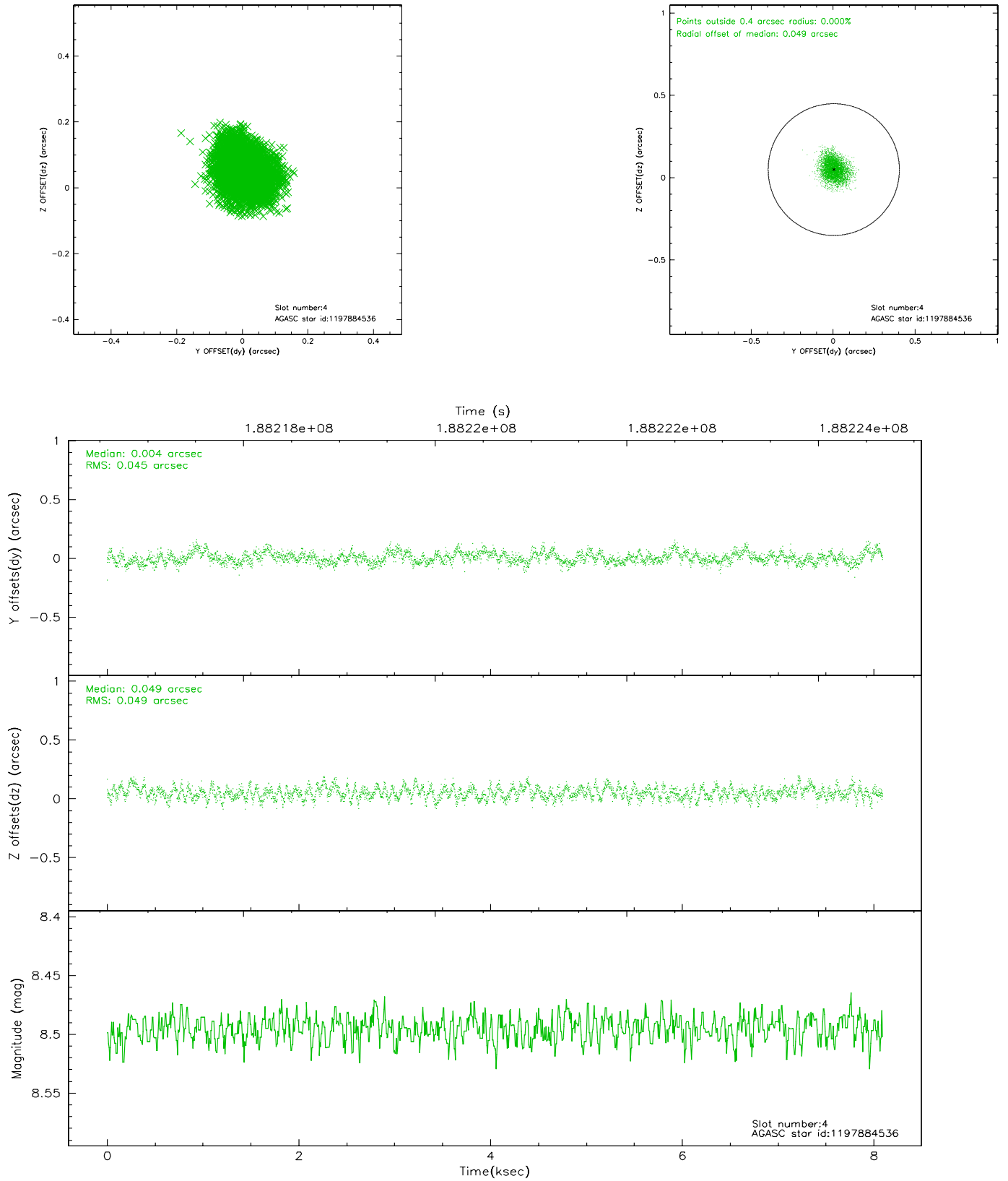


## 2.4 Star Slots

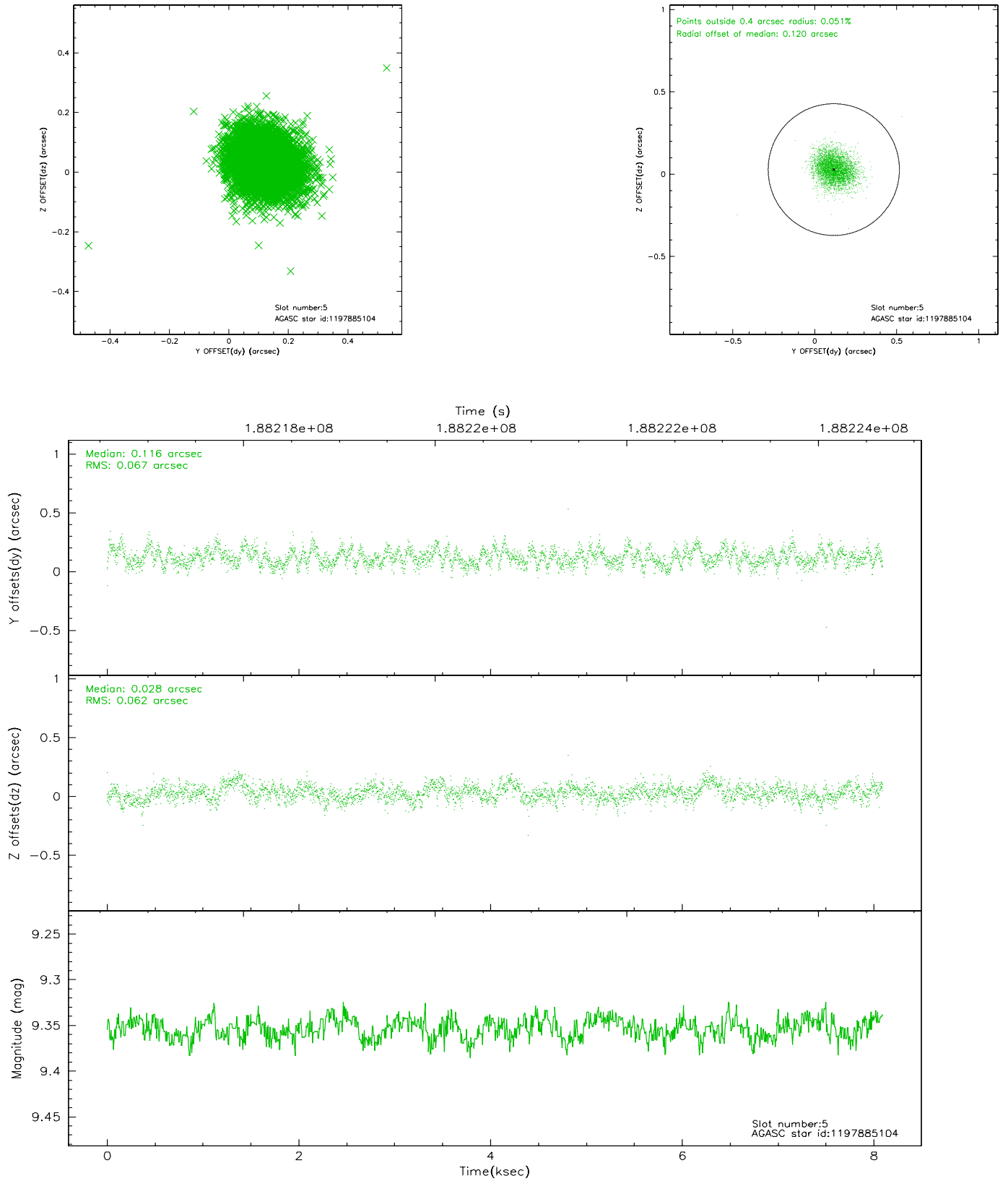
### 2.4.1 Slot 3



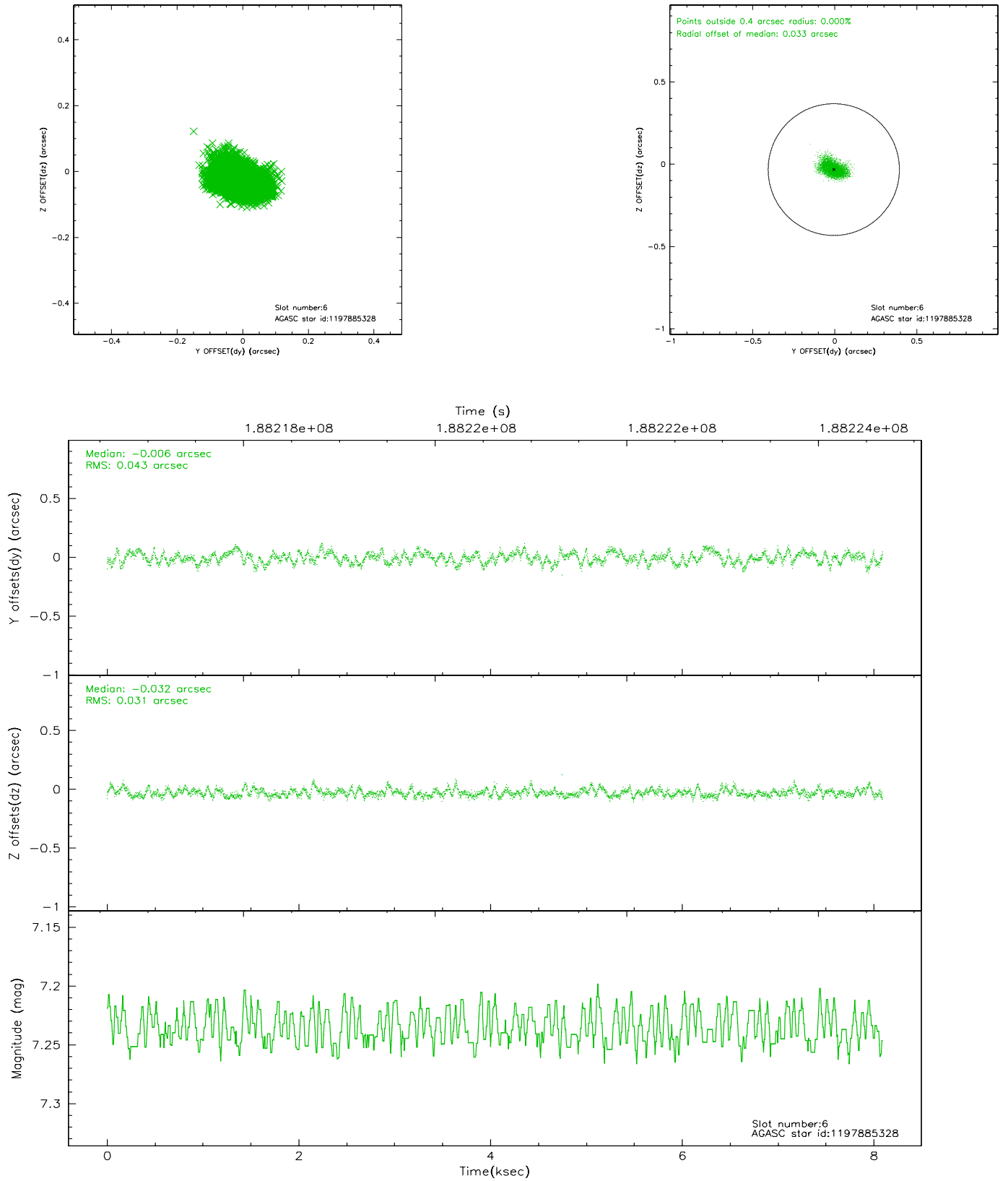
## 2.4.2 Slot 4



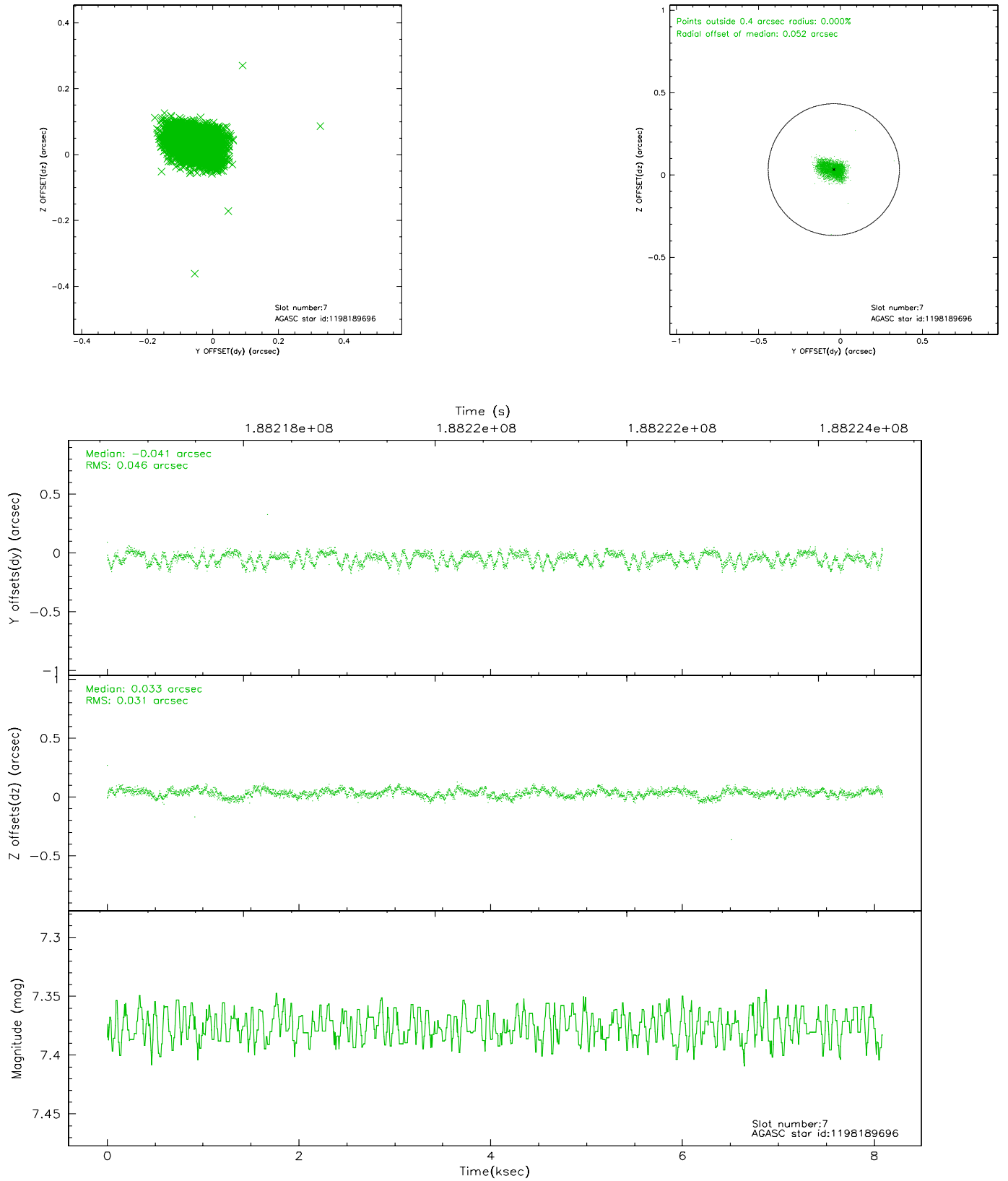
### 2.4.3 Slot 5



## 2.4.4 Slot 6

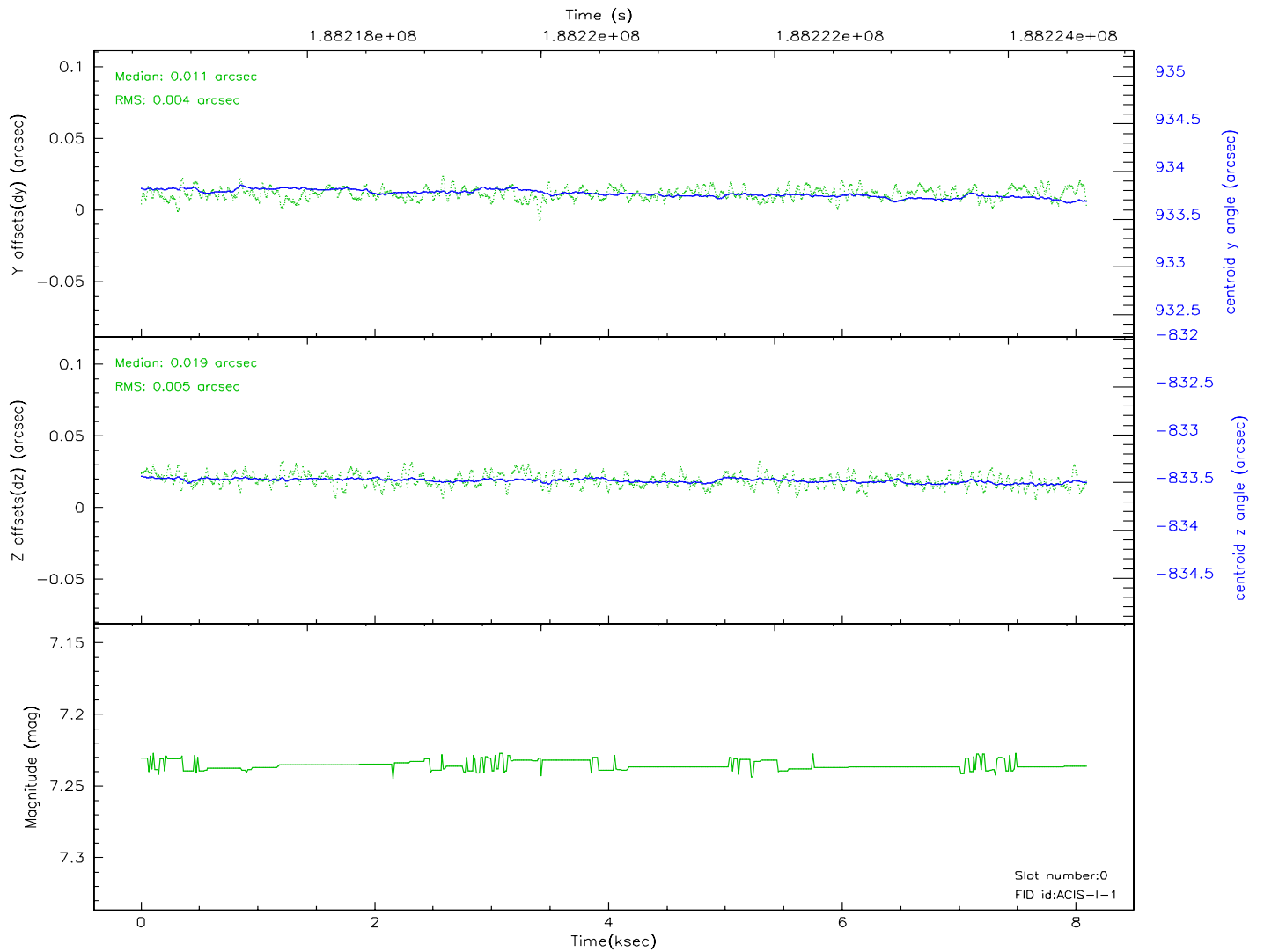
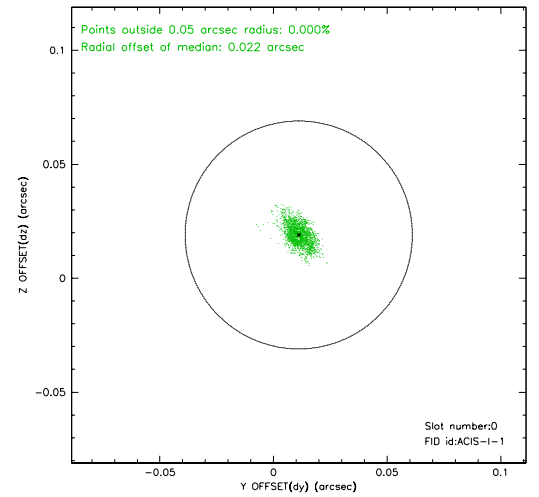
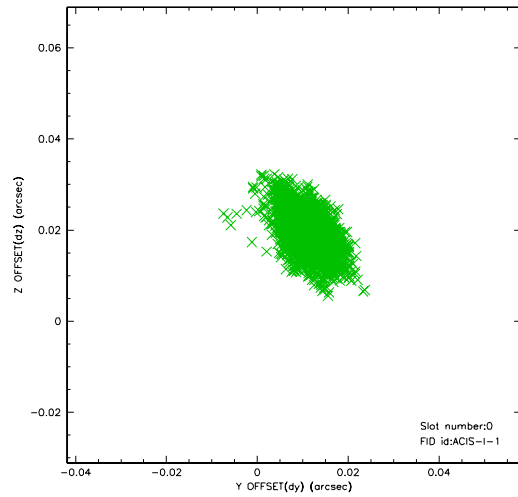


## 2.4.5 Slot 7

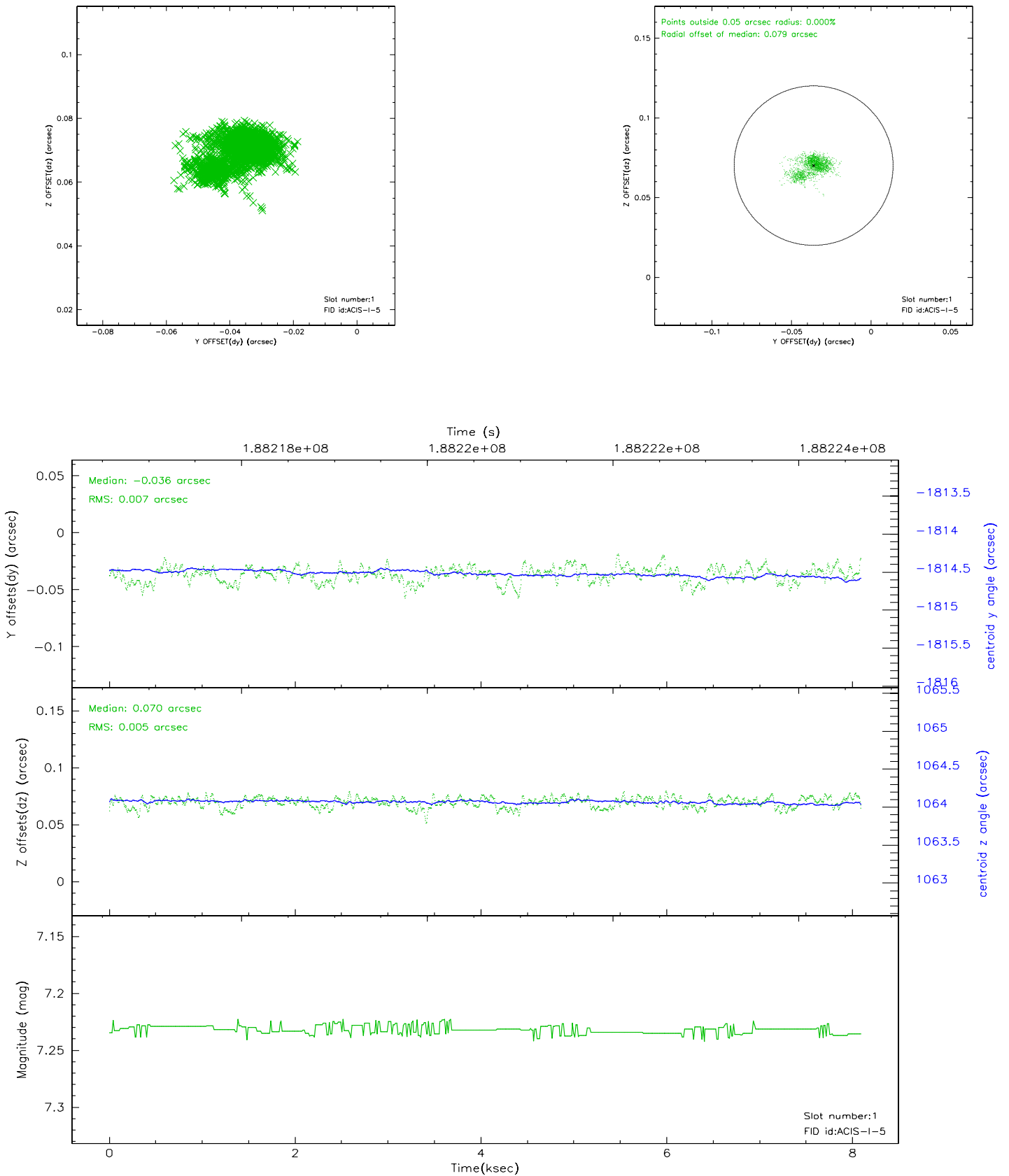


## 2.5 FID Slots

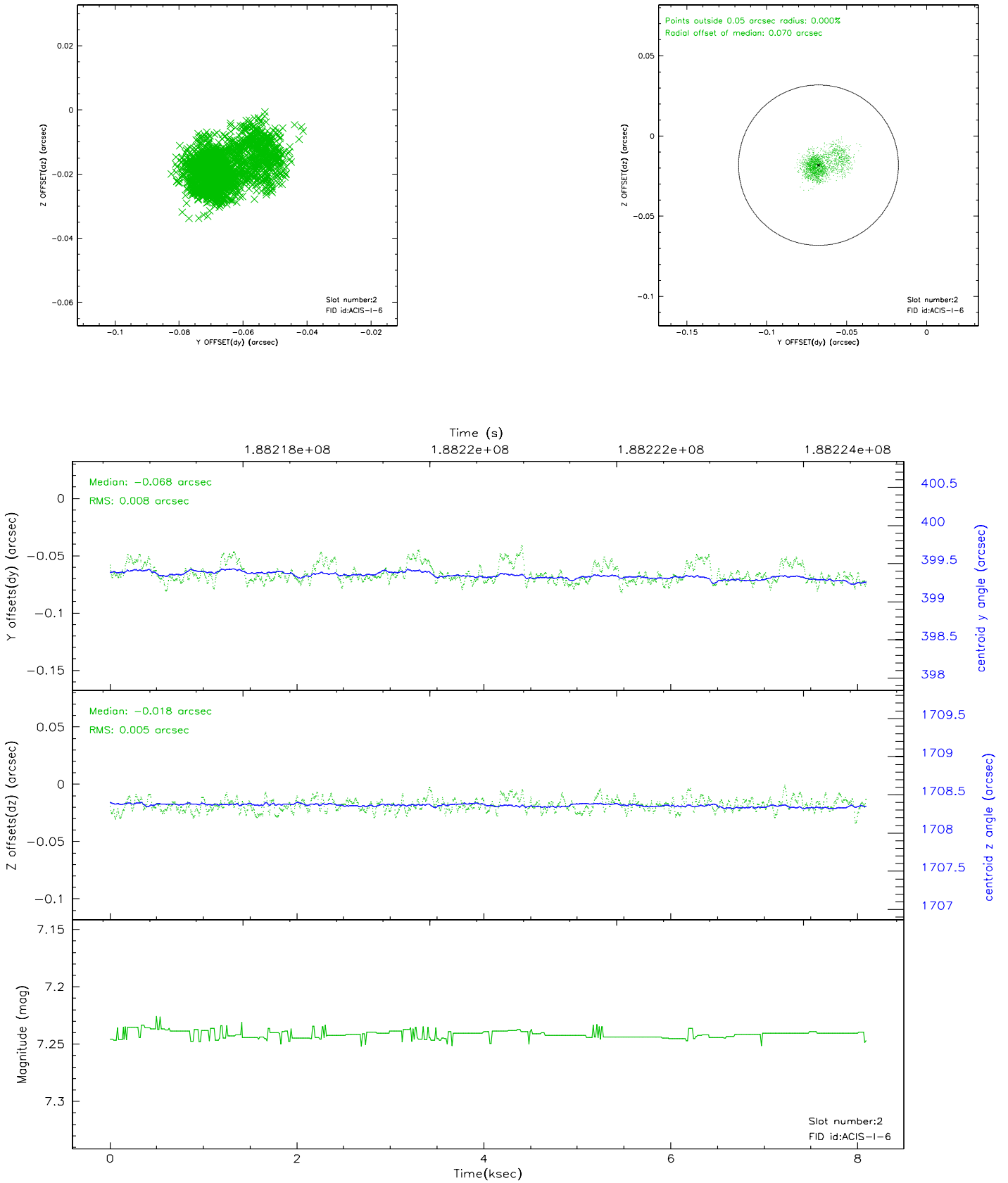
### 2.5.1 Slot 0



## 2.5.2 Slot 1

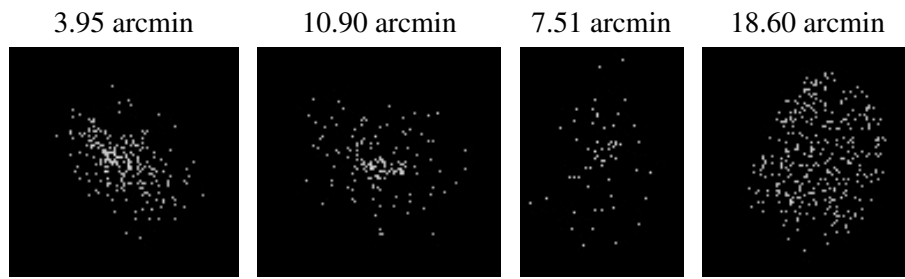


### 2.5.3 Slot 2





### 3 Point Sources



## A Summary

### A.1 Status

V&V Scientist	Jen Lauer
V&V Date (YYYY-MM-DD)	2006.06.22
V&V Edition	1
V&V Disposition and Status	OK
V&V Charge Time	7.67

### A.2 Comments

Window constraint met.