

V&V Reference Report

L2 ASCDS Version : 10.4.3.1

Observation 51189 - L2 Version 1
Chandra X-Ray Center

L2 Processing Date : Mar 15 2016

Contents

1	Front	2
2	OBI	3
2.1	OBI	3
2.1.1	Images	3
2.1.2	Bias	3
2.1.3	Parameters	4
2.1.4	Events	4
2.2	Compared Parameters	5
2.3	Star Slots	6
2.4	FID Slots	6
A	Summary	7
A.1	Status	7
A.2	Comments	7

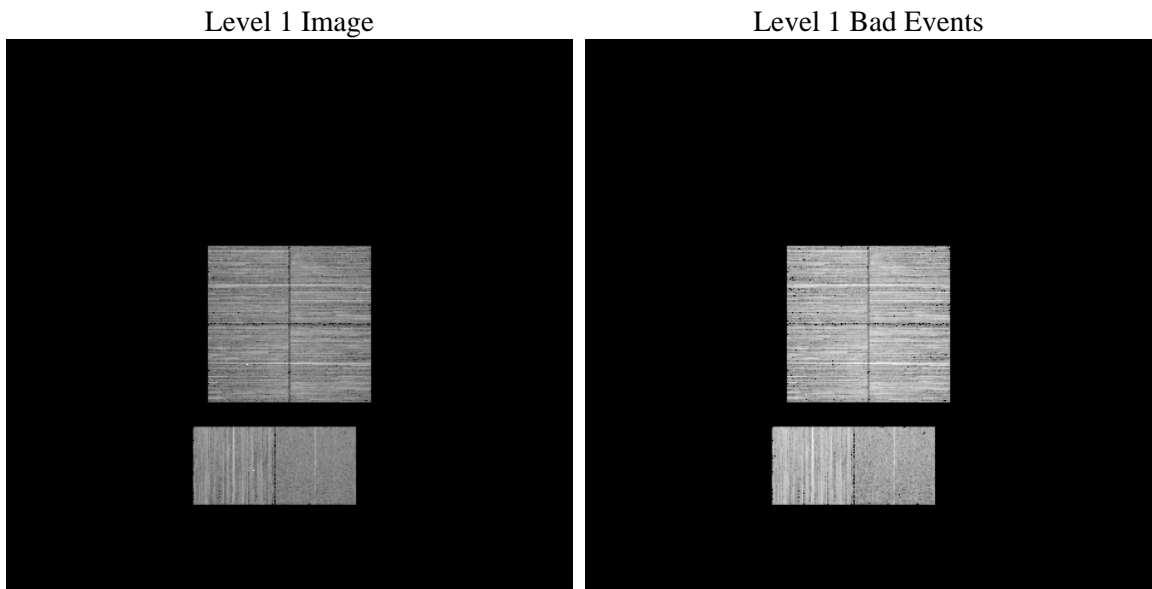
1 Front

seq_num	 	Sequence number
obs_id	51189	Observation id
title	ACIS-012367 diagnostics	Proposal title
observer	CHANDRA engineering request/realtime commanding	Principal investig
object	 	Source name
dtcycle	0	
cycle	P	events from which exps? Prim/Second/Both
ra_targ	0.0	Observer's specified target RA [deg]
dec_targ	0.0	Observer's specified target Dec [deg]
ra_nom	171.48632541997	Nominal RA [deg]
dec_nom	-25.240295373184	Nominal Dec [deg]
roll_nom	352.29518953307	Nominal Roll [deg]
revision	1	Processing version of data
ontime	4408.7262364626	Sum of GTIs [s]
livetime	4352.9002902403	Livetime [s]
ontime0	4408.6851963997	Sum of GTIs [s]
ontime1	4408.644156456	Sum of GTIs [s]
ontime2	4408.6031163931	Sum of GTIs [s]
ontime3	4408.7672764063	Sum of GTIs [s]
ontime6	4408.5620764494	Sum of GTIs [s]
ontime7	4408.7262364626	Sum of GTIs [s]
l2events	75279	Number of level 2 events

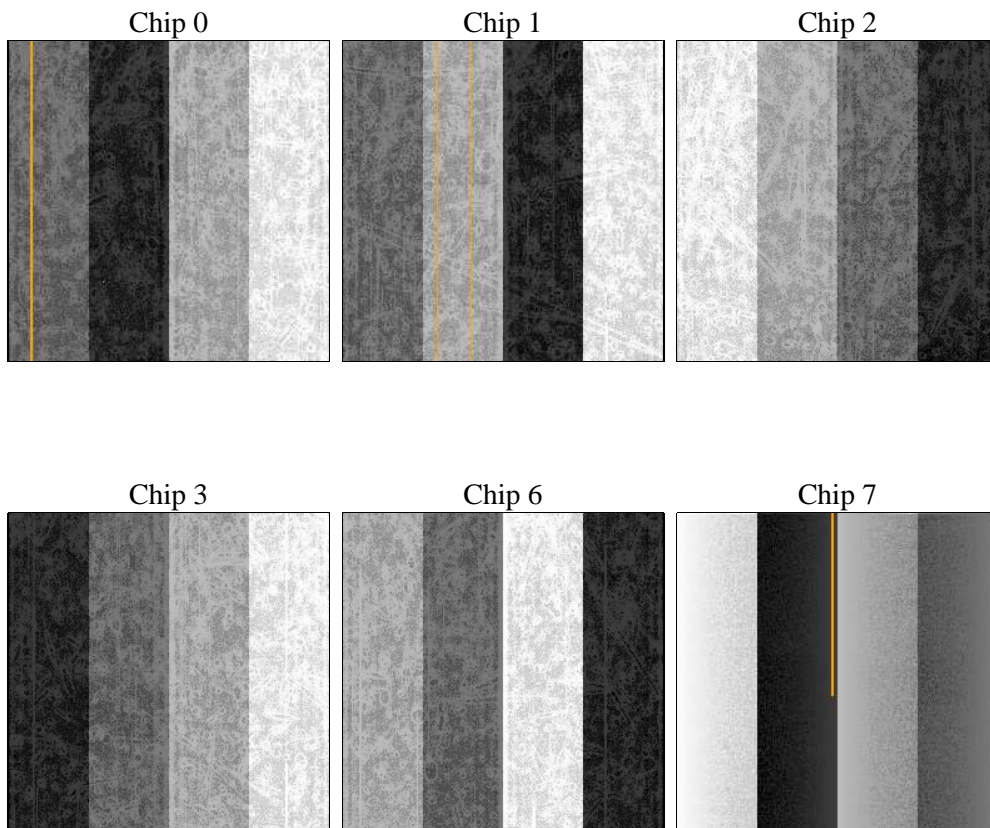
2 OBI

2.1 OBI

2.1.1 Images



2.1.2 Bias



2.1.3 Parameters

obi_num	1	Obi number	sched_exp_time	0.0	[s] Scheduled observation exposure time
ascdsver	10.4.3.1	Processing system revision	ontime	4408.7262364626	Sum of GTIs [s]
caldbver	4.7.0	 	ontime0	4408.6851963997	Sum of GTIs [s]
date	2016-03-15T14:20:18	Date and time of file creation	ontime1	4408.644156456	Sum of GTIs [s]
revision	1	Processing version of data	ontime2	4408.6031163931	Sum of GTIs [s]
			ontime3	4408.7672764063	Sum of GTIs [s]
			ontime6	4408.5620764494	Sum of GTIs [s]
			ontime7	4408.7262364626	Sum of GTIs [s]
			l1events	523119	Number of level 1 events

2.1.4 Events

	ccd 0	ccd 1	ccd 2	ccd 3	ccd 6	ccd 7		ccd 0	ccd 1	ccd 2	ccd 3	ccd 6	ccd 7
level 1 events	83977	90291	87782	96815	94686	69568	grade 0 events	4875	4708	5066	5259	6074	2778
rejected events	73339	79474	76076	86071	82438	42870		5%	5%	5%	5%	6%	3%
rejected %	87%	88%	86%	88%	87%	61%	grade 1 events	30	18	29	30	38	44
								0%	0%	0%	0%	0%	0%
							grade 2 events	2447	2739	3452	2182	2584	6624
								2%	3%	3%	2%	2%	9%
							grade 3 events	814	673	736	821	714	1850
								0%	0%	0%	0%	0%	2%
							grade 4 events	735	695	773	746	732	1896
								0%	0%	0%	0%	0%	2%
							grade 5 events	1632	1609	1577	1879	1727	4273
								1%	1%	1%	1%	1%	6%
							grade 6 events	1774	2009	1683	1745	2152	13578
								2%	2%	1%	1%	2%	19%
							grade 7 events	71670	77840	74466	84153	80665	38525
								85%	86%	84%	86%	85%	55%

2.2 Compared Parameters

Parameter	Planned	Actual
Instrument	ACIS	ACIS
Detector	ACIS-012367	ACIS-012367
Grating	NONE	NONE
Data mode	FAINT	FAINT
Observation mode	SECONDARY	SECONDARY
[deg] Pointing RA	0	171.4863254199688
[deg] Pointing Dec	0	-25.24029537318446
[deg] Pointing Roll	0.0	352.295189533065
[mm] SIM focus pos	-1.429586	-1.428180813131781
[mm] SIM defocus	0.1037507710433287	0.1051558262725154
[mm] SIM translation stage pos	250.455976	250.466033080201
[mm] SIM translation stage offset	0	-0.01005468664627074
[s] Observation start time (MET)	574387189.551456	574387188.5264601
Observation start date	2016-03-14T23:59:50	2016-03-14T23:59:48
[s] Observation end time (MET)	574396463.751982	574396462.72698
Observation end date	2016-03-15T02:34:24	2016-03-15T02:34:22
Read mode	TIMED	TIMED

Parameter	Planned	Actual
Obspar format version number	7	7
Obspar file type	PREDICTED	ACTUAL
Obspar update status	NONE	UPDATED
Number of optional ACIS chips dropped	0	0
On-chip summing requested	N	N
Subarray requested	NONE	NONE
Alternating exposures requested	N	N
[s] Primary exposure time	3.2	3.2

2.3 Star Slots

2.4 FID Slots

A Summary

A.1 Status

V&V Scientist	Jen Lauer
V&V Date (YYYY-MM-DD)	2016.03.15
V&V Edition	1
V&V Disposition and Status	OK
V&V Charge Time	4.4087262364626

A.2 Comments