

V&V Reference Report

L2 ASCDS Version : 7.6.7.2

Observation 5059 - L2 Version 001
Chandra X-Ray Center

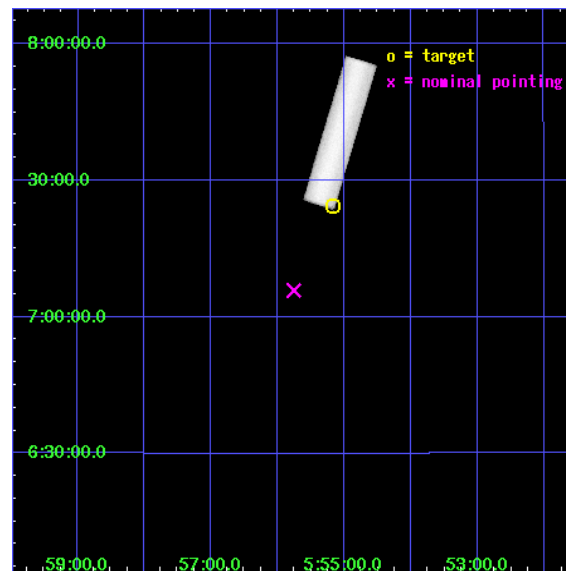
L2 Processing Date : Jun 4 2006

Contents

1	Front	2
2	OBI	3
2.1	OBI	3
2.1.1	Images	3
2.1.2	Parameters	4
2.1.3	Events	4
2.2	Compared Parameters	5
2.3	Aspect	6
2.4	Star Slots	9
2.4.1	Slot 3	9
2.4.2	Slot 4	10
2.4.3	Slot 5	11
2.4.4	Slot 6	12
2.4.5	Slot 7	13
2.5	FID Slots	14
2.5.1	Slot 0	14
2.5.2	Slot 1	15
2.5.3	Slot 2	16
3	Point Sources	17
A	Summary	18
A.1	Status	18
A.2	Comments	18

1 Front

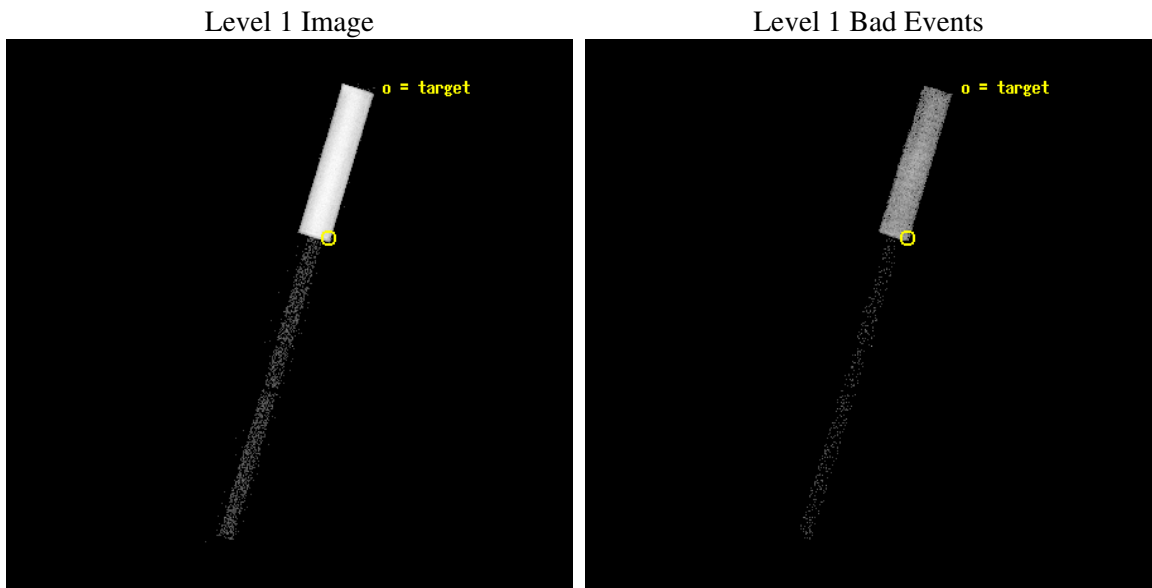
seq_num	290332
obs_id	5059
title	AO5 Measurements of the optical/UV Transmission of the HRC and ACIS Filters.
observer	Dr. CXC Calibration
object	Betelgeuse
ra_targ	88.792917
dec_targ	7.407056
ra_nom	88.938796400953
dec_nom	7.0976948445599
roll_nom	286.71274060079
revision	2
ontime	2246.0313481688
livetime	2233.9917352743
l2events	198882



2 OBI

2.1 OBI

2.1.1 Images



2.1.2 Parameters

obi_num	0
ascdsver	7.6.7.2
caldbver	3.2.2
date	2006-06-04T06:49:05
revision	2

sched_exp_time	2102.000000
ontime	2290.1063500941
l1events	248469

2.1.3 Events

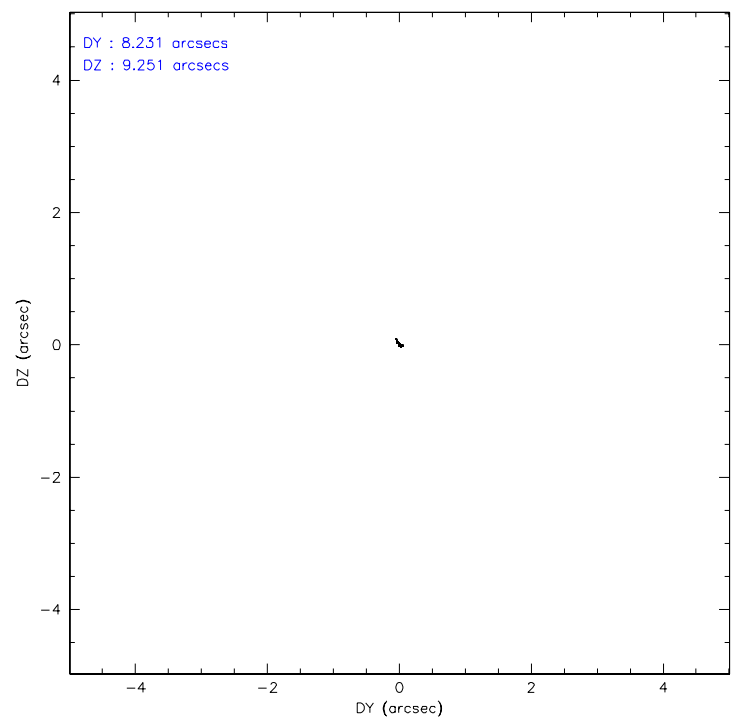
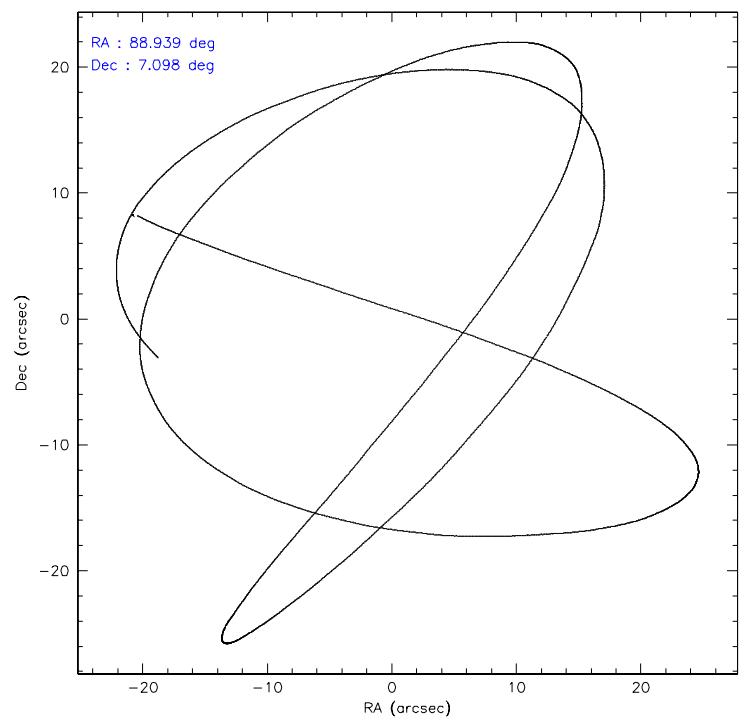
Level 1 Events

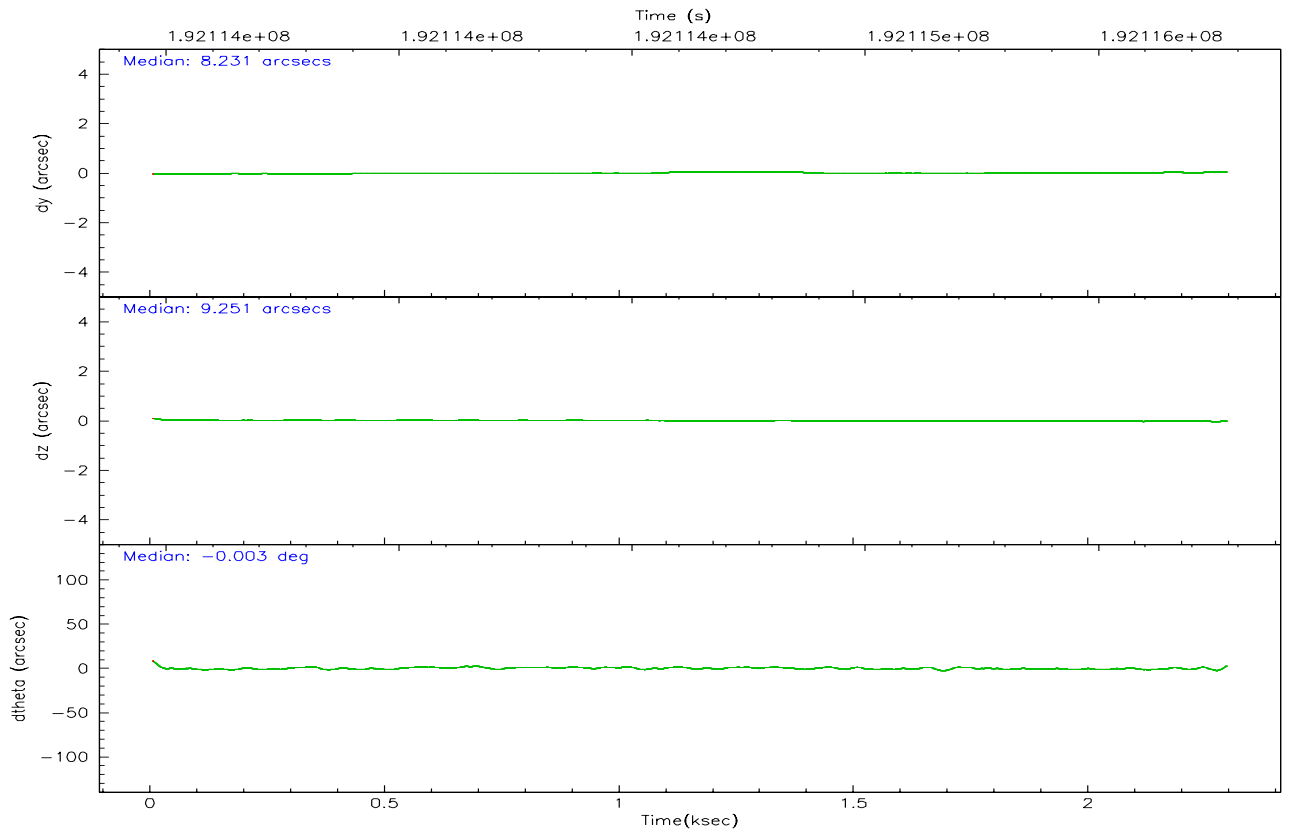
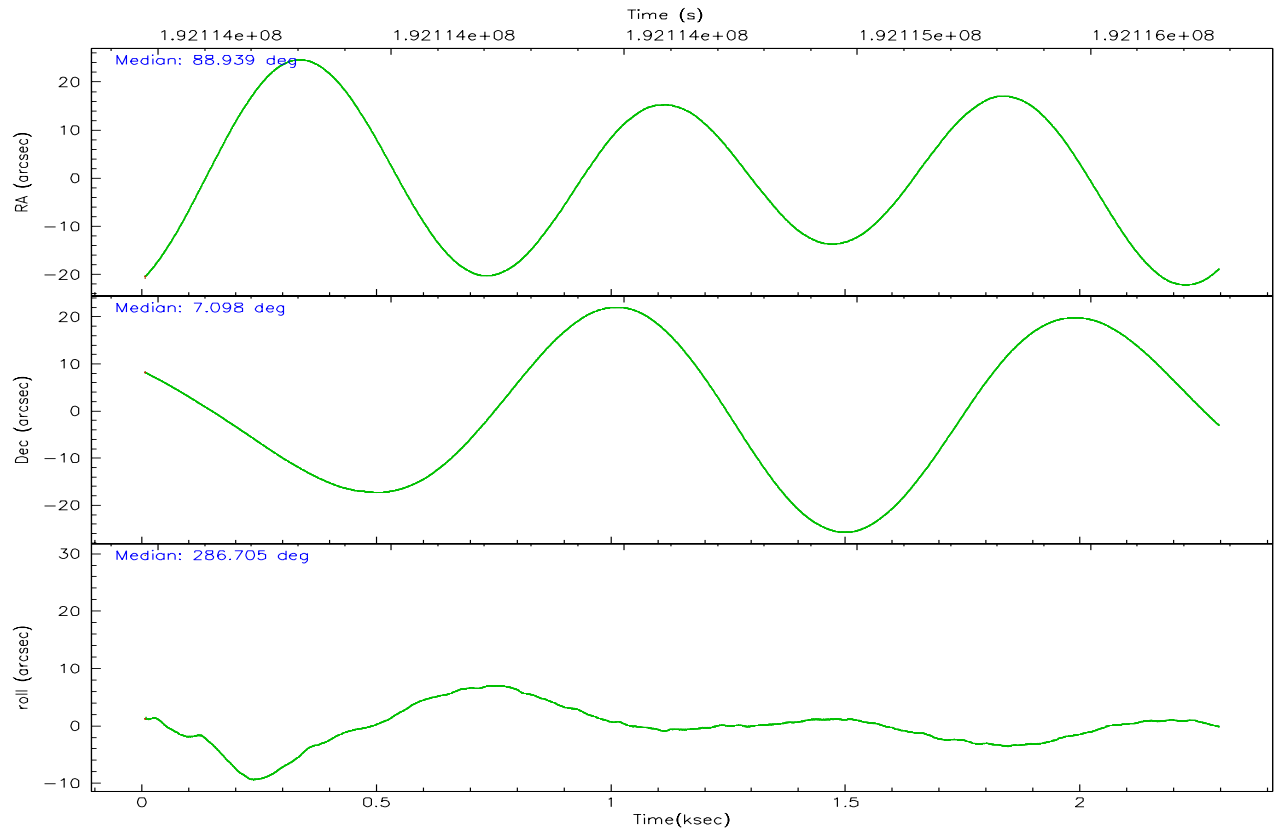
	segment 1	segment 2	segment 3
level 1 events	246058	1188	1223
rejected events	32380	1163	1223
rejected %	13%	97%	100%

2.2 Compared Parameters

Parameter	Planned	Actual	Parameter	Planned	Actual
Instrument	HRC	HRC	Obspar format version number	6	6
Detector	HRC-S	HRC-S	Obspar file type	PREDICTED	ACTUAL
Grating	NONE	NONE	Obspar update status	NONE	UPDATED
Data mode	OBSERVING	OBSERVING			
Observation mode	POINTING	POINTING			
Pointing RA	88.916805	88.93879640095287			
Pointing Dec	7.116075	7.097694844559913			
Pointing Roll	286.648107	286.7127406007913			
Window start time	191980864.184000	191980864.184000			
Window stop time	197078464.184000	197078464.184000			
SIM focus pos (mm)	-1.429586	-1.428180813131781			
SIM defocus (mm)	0.1037507710433287	0.1051558262725154			
SIM translation stage pos (mm)	250.455976	250.466033080201			
SIM translation stage offset (mm)	0	-0.01005468664627074			
Observation start time	192113667.184000	192113291.1205			
Observation start date	2004-02-02T12:53:23	2004-02-02T12:48:11			
Observation end time	192115769.184000	192117102.07067			
Observation end date	2004-02-02T13:28:25	2004-02-02T13:51:42			

2.3 Aspect



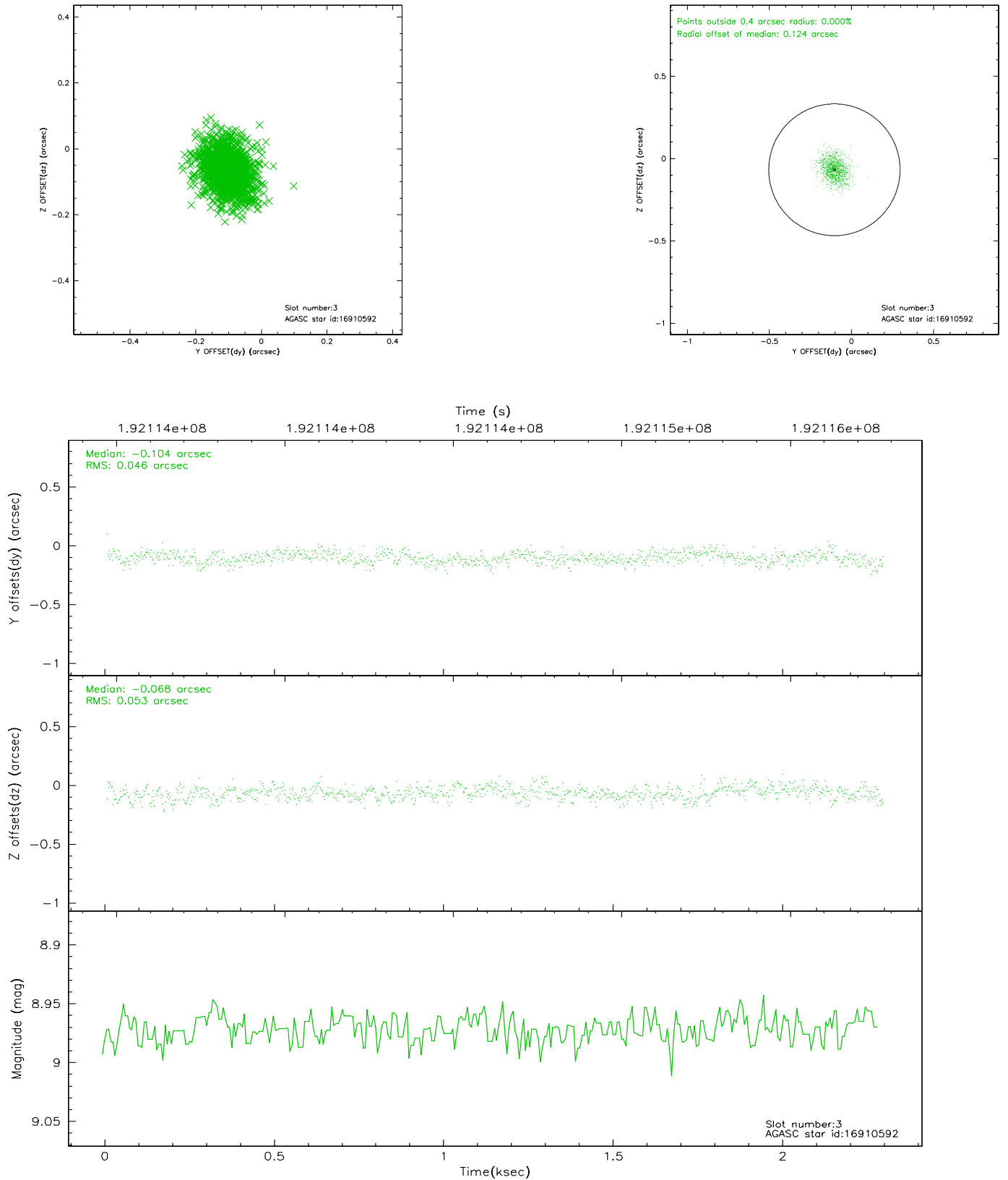


Slot Statistics

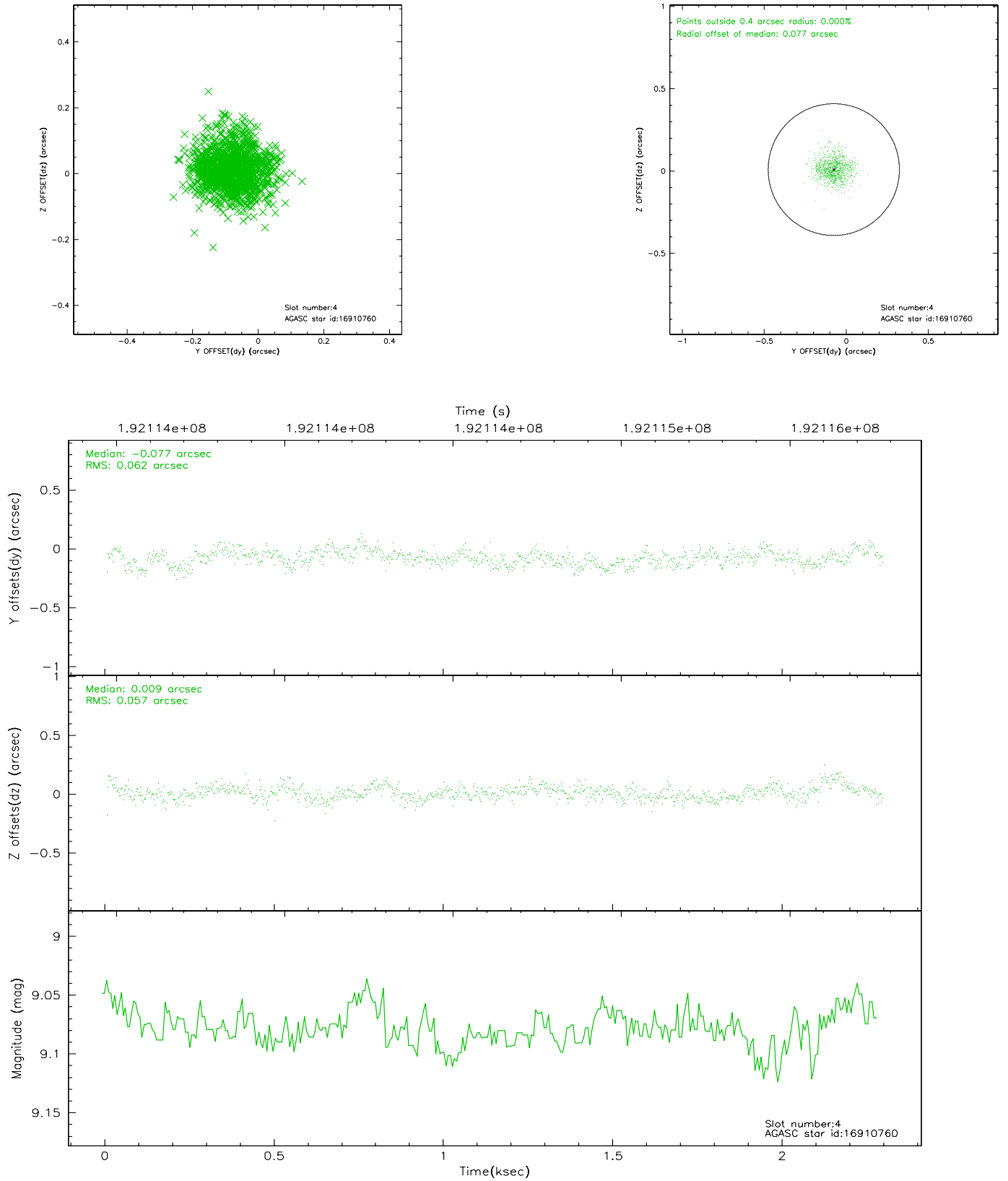
slot	status	id	mag	n_pts	med_dy	med_dz	dr1	dr2	ra	dec	mean_y	mean_z
0	FID	HRC-S-1	7.08	559	0.126	-0.208	0.006	0.010	0.000000	0.000000	-1162.43	-457.96
1	FID	HRC-S-3	7.08	559	0.067	0.009	0.007	0.013	0.000000	0.000000	-1167.28	570.97
2	FID	HRC-S-4	7.06	559	0.195	-0.098	0.005	0.009	0.000000	0.000000	1233.83	575.23
3	GUIDE	16910592	8.97	1118	-0.104	-0.068	0.073	0.120	88.532936	6.726769	950.03	-1716.36
4	GUIDE	16910760	9.08	1114	-0.077	0.009	0.092	0.145	89.059695	7.486642	-1130.59	868.99
5	GUIDE	16912728	9.10	1118	0.197	-0.011	0.091	0.148	88.844647	6.730340	1256.67	-644.26
6	GUIDE	16913360	8.34	1118	-0.059	0.029	0.065	0.101	89.178373	7.247125	-182.86	1029.48
7	GUIDE	16917248	8.71	1117	0.046	0.046	0.066	0.108	89.306967	6.774731	1576.98	985.46

2.4 Star Slots

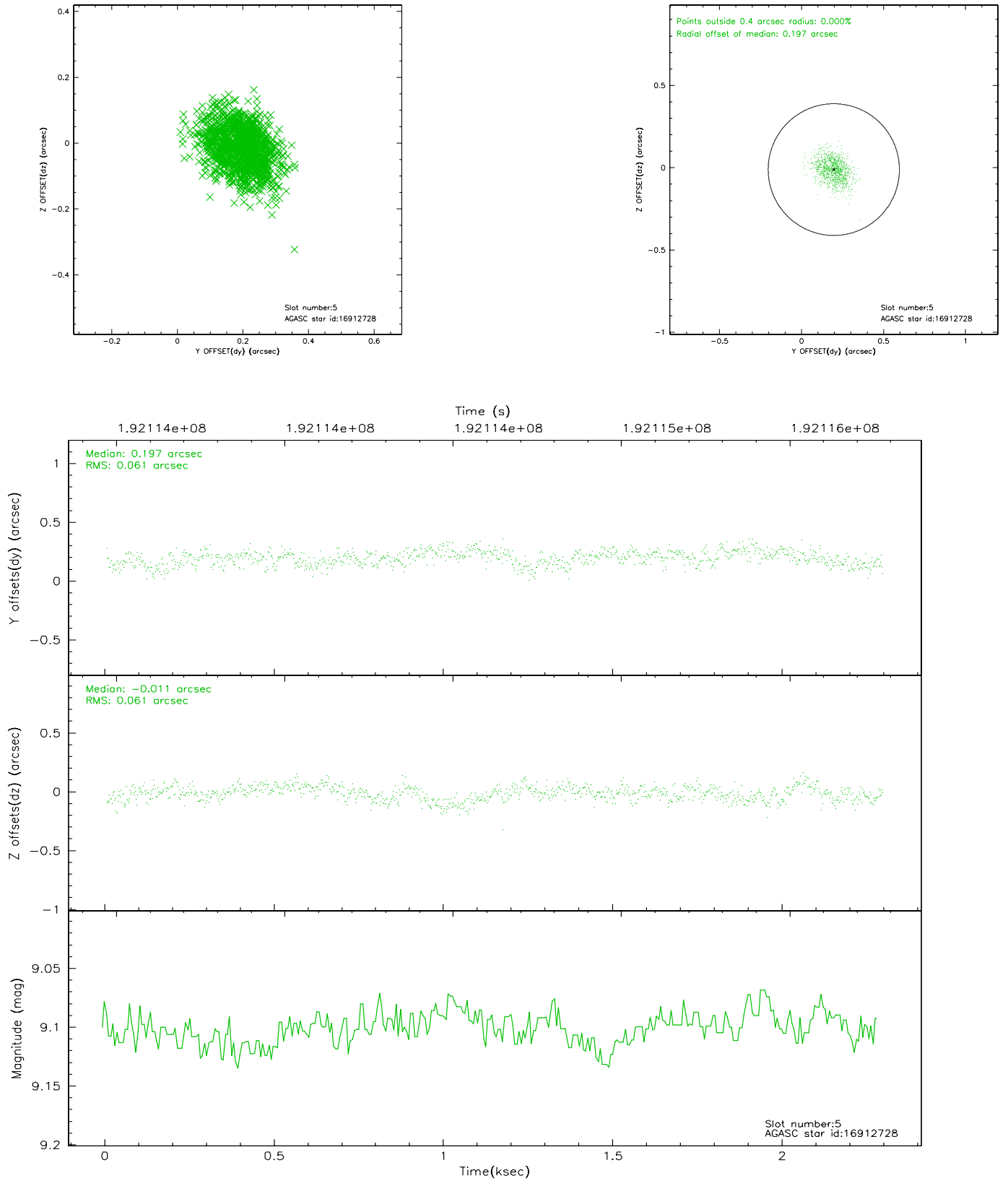
2.4.1 Slot 3



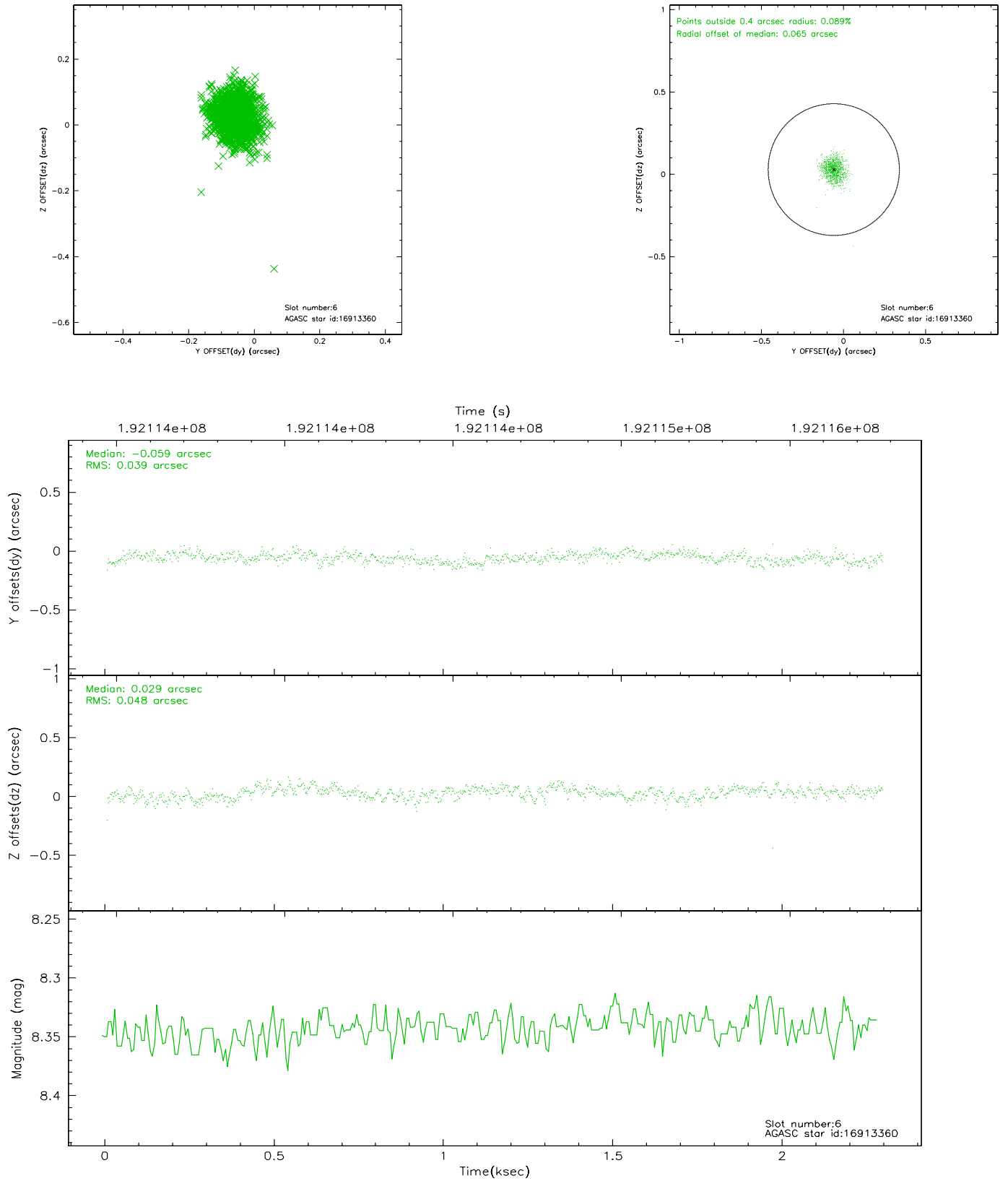
2.4.2 Slot 4



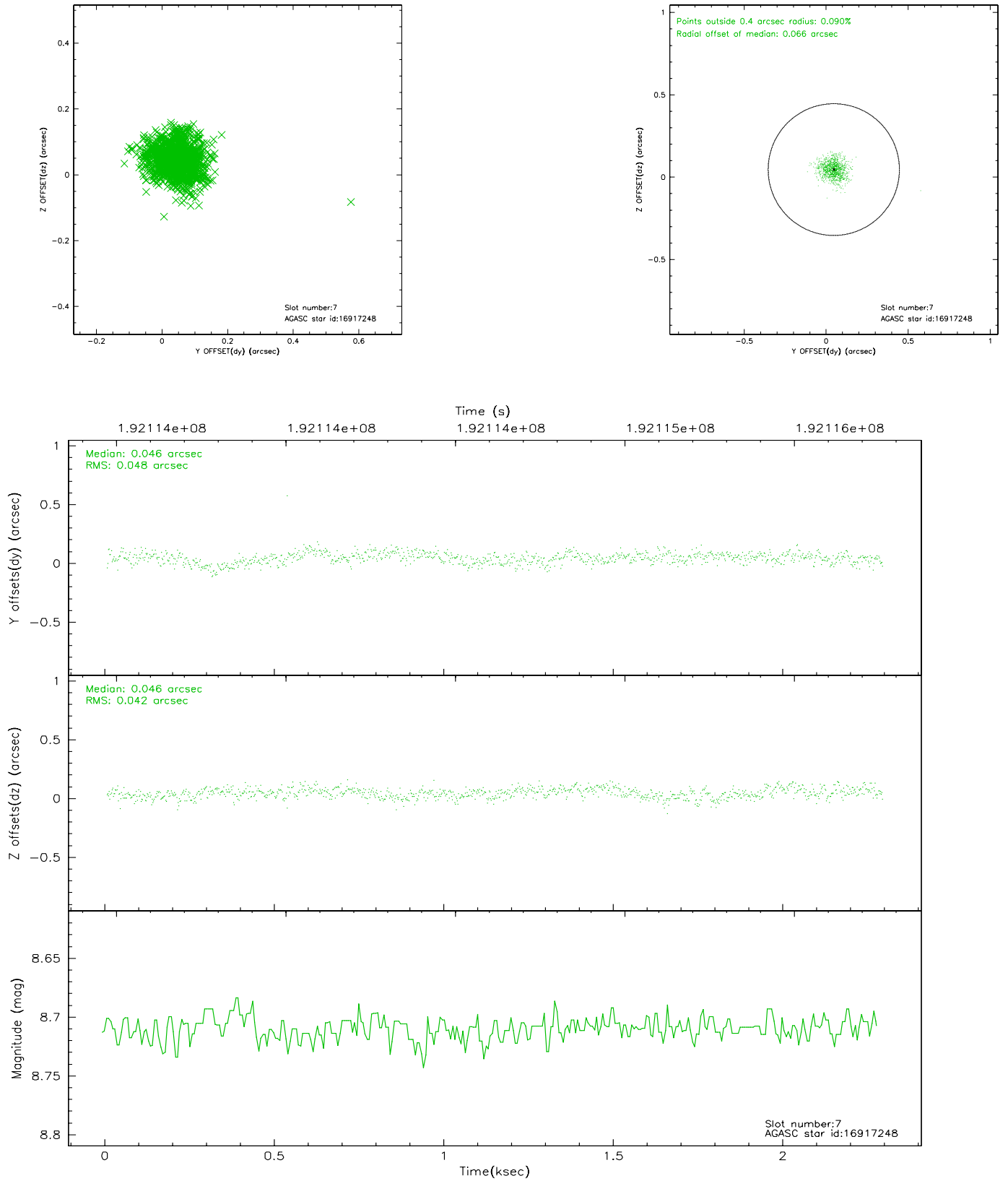
2.4.3 Slot 5



2.4.4 Slot 6

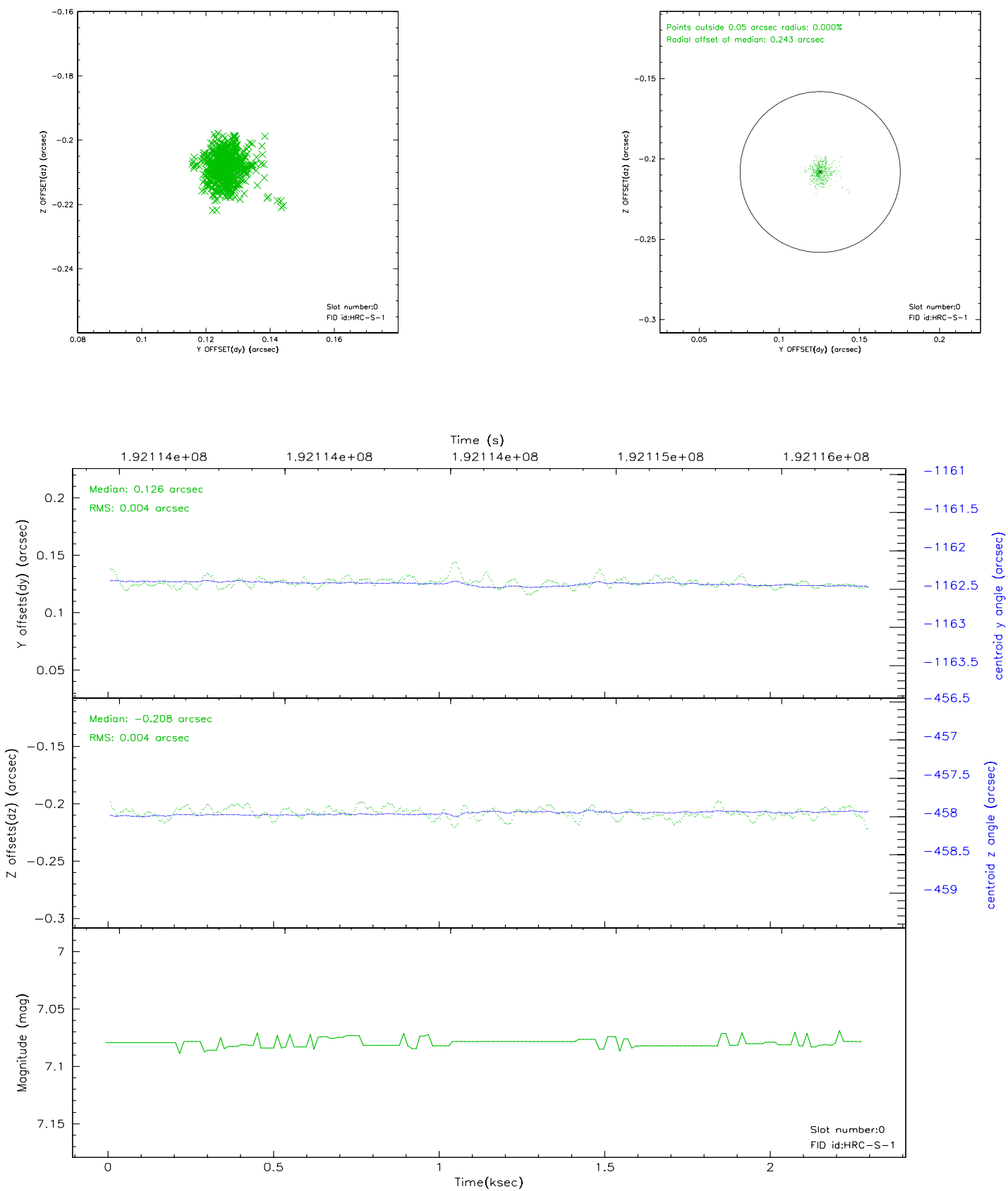


2.4.5 Slot 7

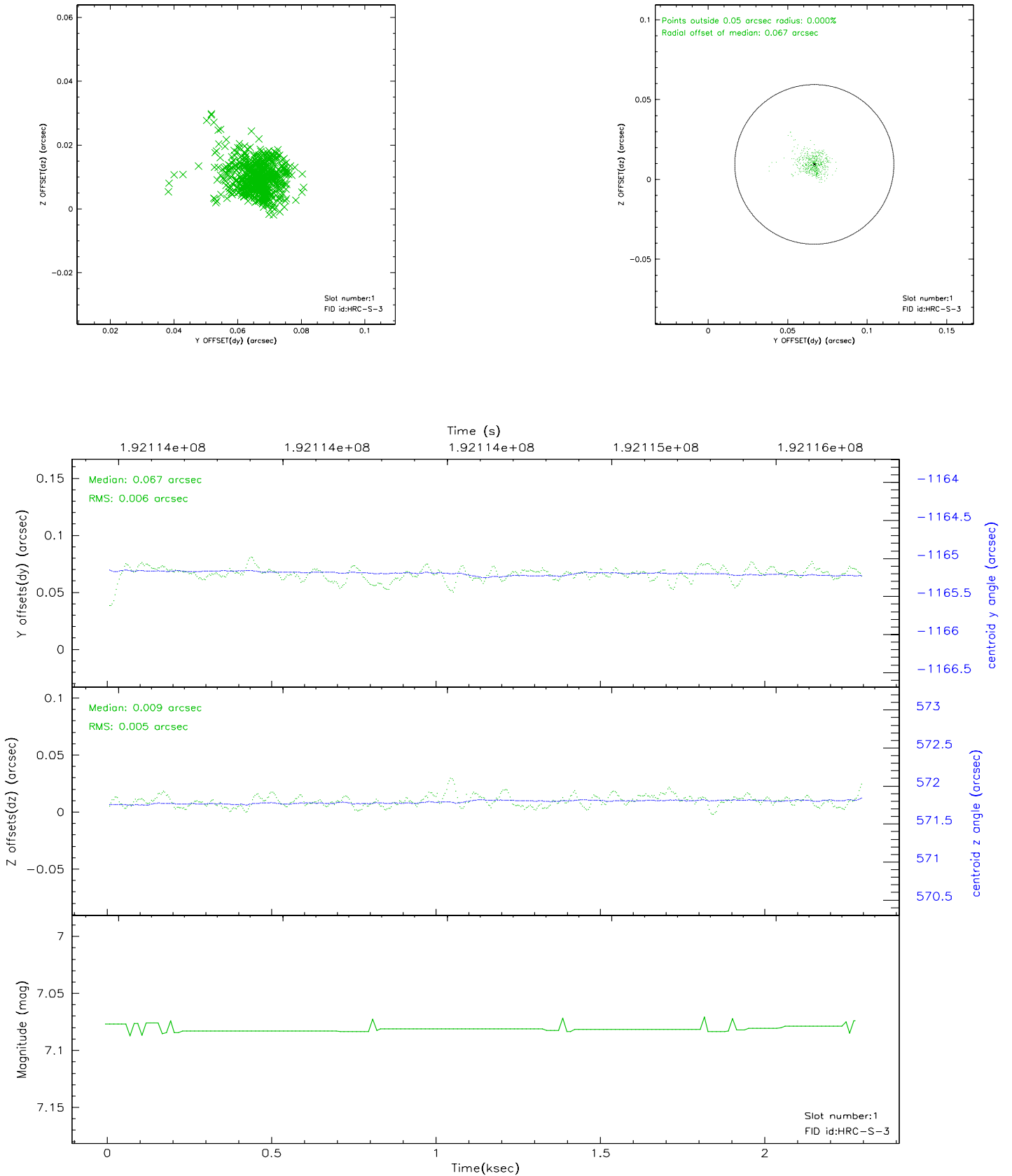


2.5 FID Slots

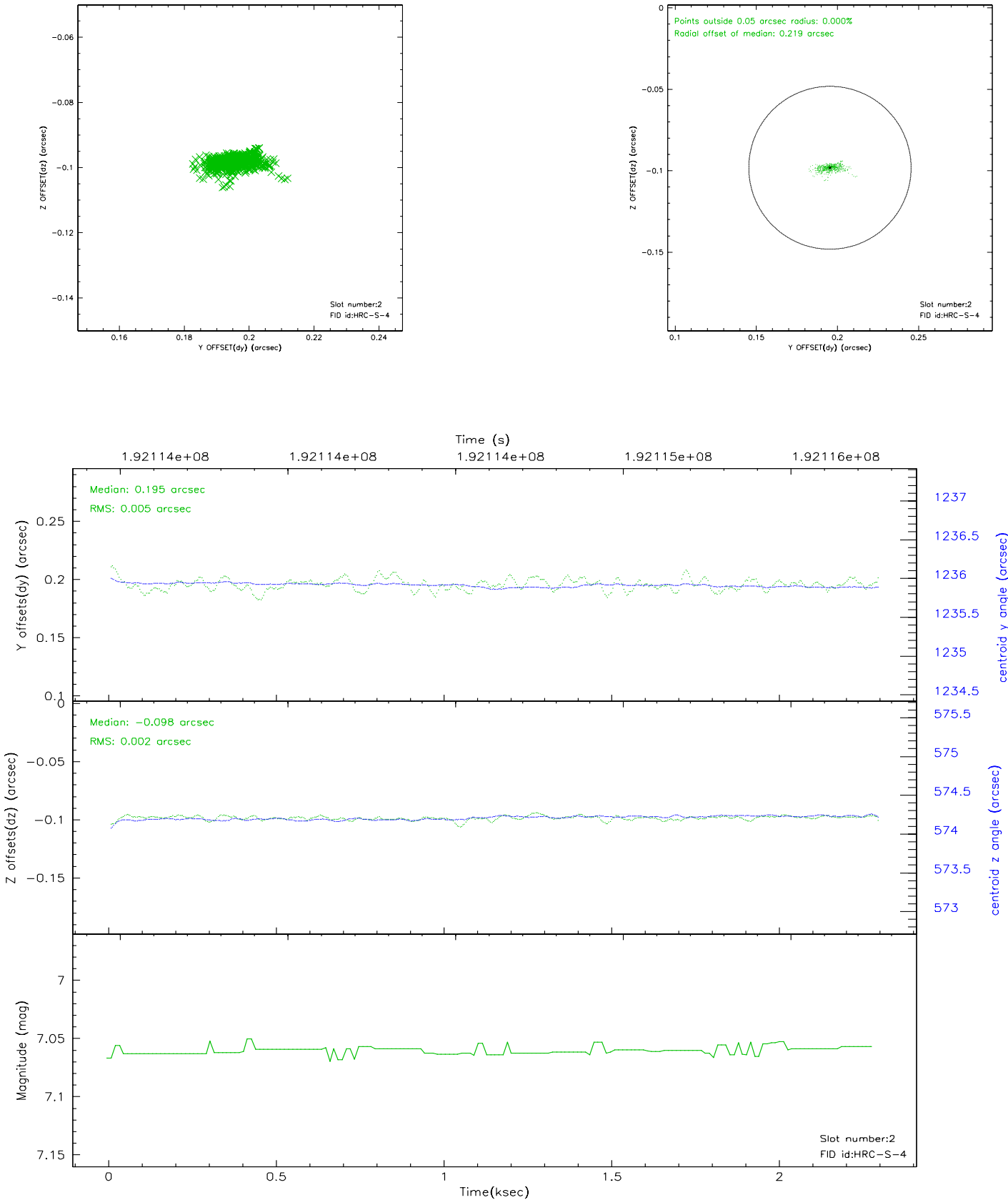
2.5.1 Slot 0



2.5.2 Slot 1



2.5.3 Slot 2



3 Point Sources

A Summary

A.1 Status

V&V Scientist	Beth Sundheim
V&V Date (YYYY-MM-DD)	2006.06.05
V&V Edition	1
V&V Disposition and Status	OK
V&V Charge Time	2.246

A.2 Comments

Window constraint satisfied.

The keywords DTCOR, EXPOSURE, and LIVETIME in the Level 2 event file and the keyword DTCOR in the Level 1 event file have been incorrectly determined due to a software bug. The correct value of DTCOR can be found in the file DTFSTATS file that can be obtained by downloading the secondary data products. In most cases, the difference between the correct DTCOR value and the incorrect DTCOR value in the Level 2 event file is very small and does not affect the data analysis. However, there are cases of significant differences and the user is advised to use the DTCOR in the DTFSTATS file for analysis. Corrected data products will be made available in the archive as soon as feasible.