

# V&V Reference Report

## L2 ASCDS Version : 7.6.7.1

Observation 5029 - L2 Version 001  
Chandra X-Ray Center

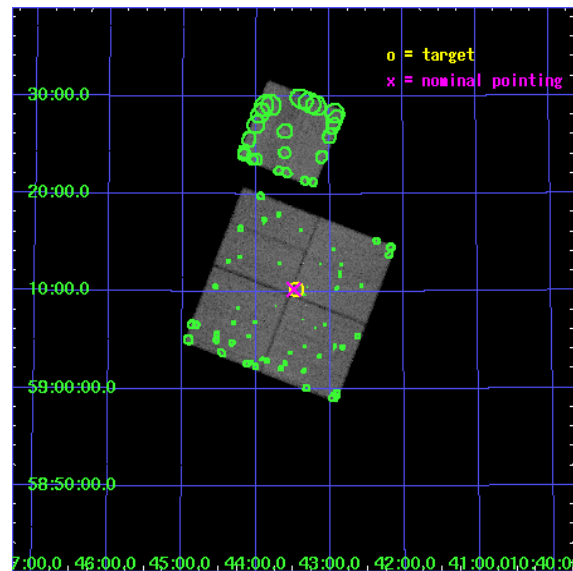
L2 Processing Date : Apr 16 2006

## Contents

<b>1</b>	<b>Front</b>	<b>2</b>
<b>2</b>	<b>OBI</b>	<b>3</b>
2.1	OBI . . . . .	3
2.1.1	Images . . . . .	3
2.1.2	Bias . . . . .	3
2.1.3	Parameters . . . . .	4
2.1.4	Events . . . . .	4
2.2	Compared Parameters . . . . .	5
2.3	Aspect . . . . .	6
2.4	Star Slots . . . . .	9
2.4.1	Slot 3 . . . . .	9
2.4.2	Slot 4 . . . . .	10
2.4.3	Slot 5 . . . . .	11
2.4.4	Slot 6 . . . . .	12
2.4.5	Slot 7 . . . . .	13
2.5	FID Slots . . . . .	14
2.5.1	Slot 0 . . . . .	14
2.5.2	Slot 1 . . . . .	15
2.5.3	Slot 2 . . . . .	16
<b>3</b>	<b>Point Sources</b>	<b>17</b>
<b>A</b>	<b>Summary</b>	<b>18</b>
A.1	Status . . . . .	18
A.2	Comments . . . . .	18

# 1 Front

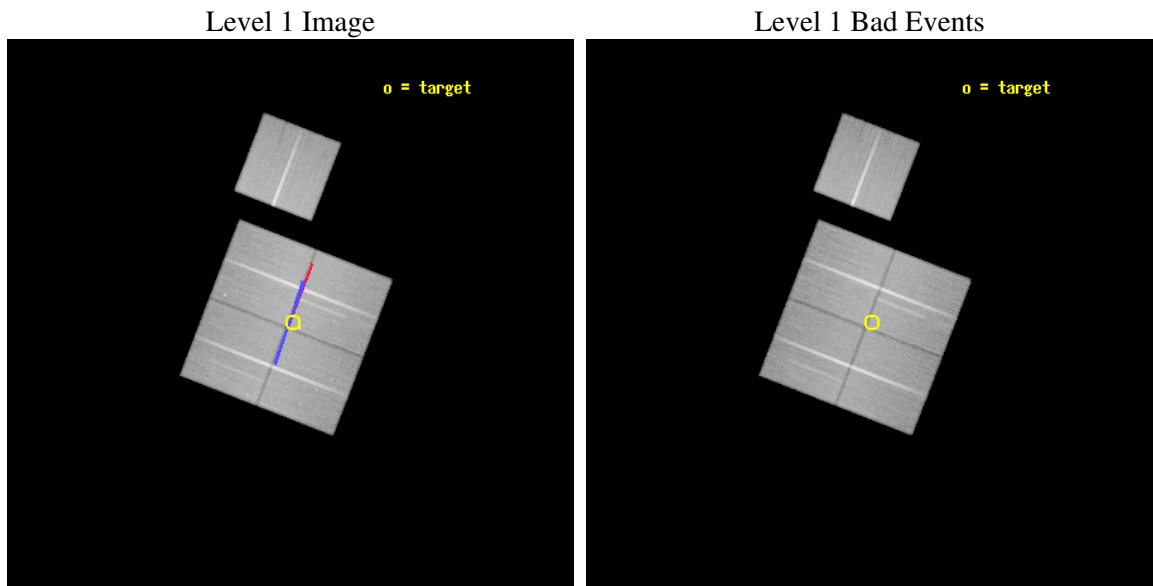
seq_num	900336
obs_id	5029
title	The Balance of Power between Starbursts and AGN: a Chandra/SIRTf Survey.
observer	Dr. BELINDA WILKES
object	SWIRE LOCKMAN 7
dtcycle	0
cycle	P
ra_targ	160.863475
dec_targ	59.170854
ra_nom	160.87250115066
dec_nom	59.170709155298
roll_nom	21.200930997156
revision	2
ontime	72068.717940927
livetime	71127.08708481
ontime0	72056.154069871
ontime1	72068.717910975
ontime2	72065.576891005
ontime3	72068.717940927
ontime6	72074.999861419
l2events	282281



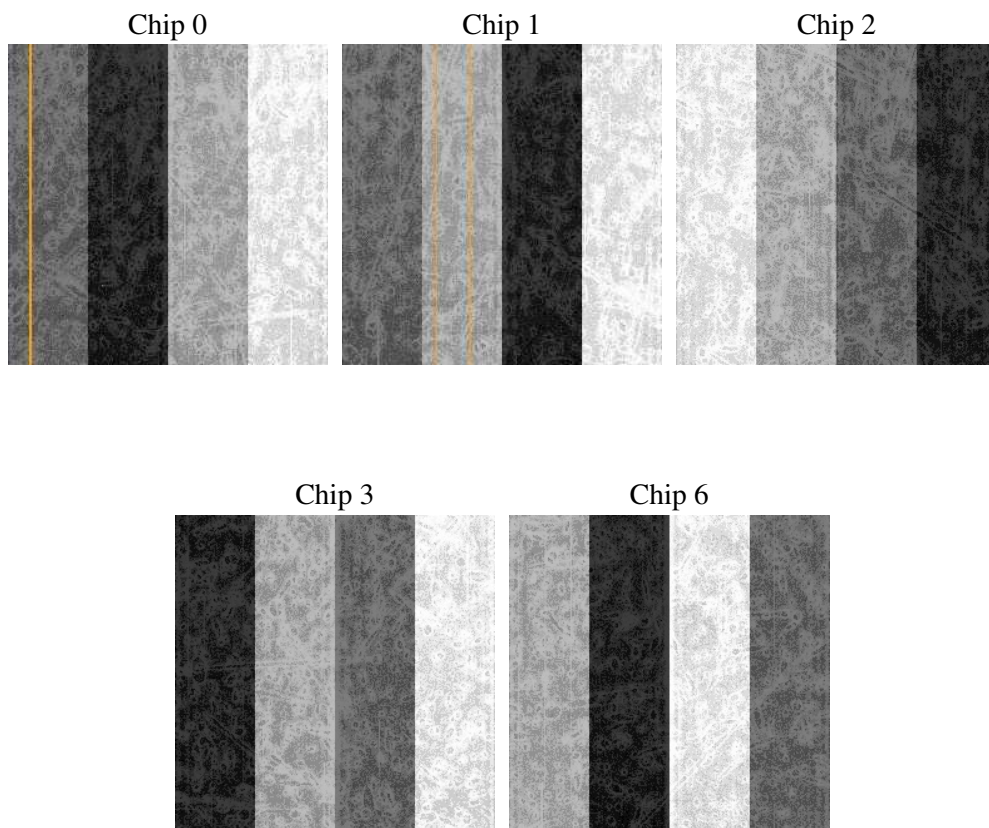
## 2 OBI

### 2.1 OBI

#### 2.1.1 Images



#### 2.1.2 Bias



### 2.1.3 Parameters

obi_num	0
ascdsver	7.6.7.1
caldbver	3.2.1
date	2006-04-16T18:11:27
revision	2

sched_exp_time	71950.245000
ontime	72651.359878242
ontime0	72638.796007186
ontime1	72651.359818369
ontime2	72648.218828321
ontime3	72651.359878242
ontime6	72657.641768813
l1events	2658127

### 2.1.4 Events

	ccd 0	ccd 1	ccd 2	ccd 3	ccd 6
level 1 events	507467	505877	558608	541742	544433
rejected events	441254	437637	494270	477192	481763
rejected %	86%	86%	88%	88%	88%

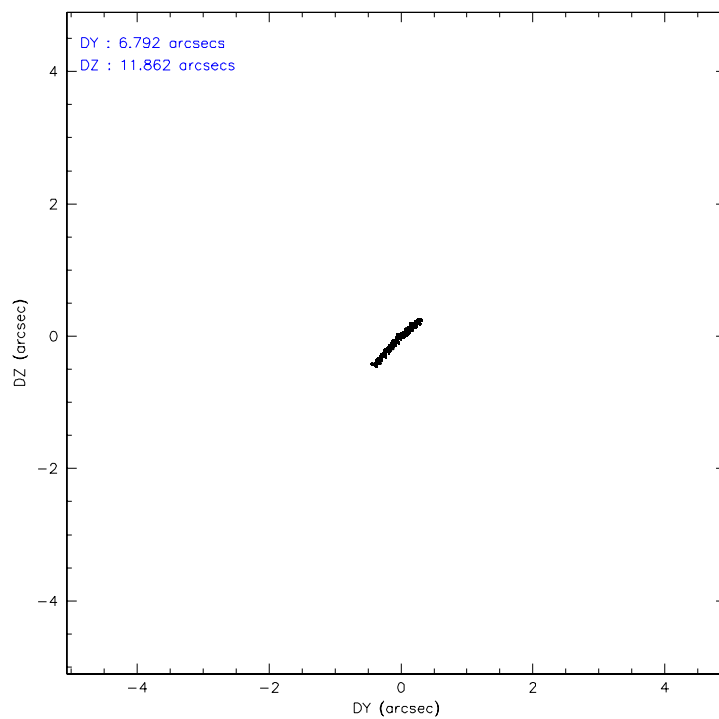
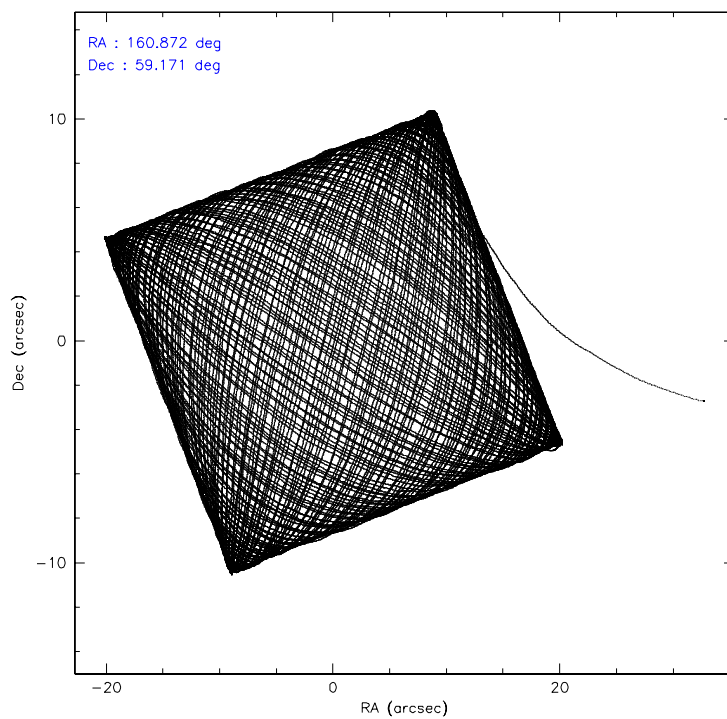
	ccd 0	ccd 1	ccd 2	ccd 3	ccd 6
grade 0 events	28693	27431	28974	28916	24952
	5%	5%	5%	5%	4%
grade 1 events	267	281	358	327	236
	0%	0%	0%	0%	0%
grade 2 events	14117	14809	13207	12703	13188
	2%	2%	2%	2%	2%
grade 3 events	6514	6620	5985	6280	6222
	1%	1%	1%	1%	1%
grade 4 events	6080	6853	6057	6106	6061
	1%	1%	1%	1%	1%
grade 5 events	22135	23267	21268	24415	24612
	4%	4%	3%	4%	4%
grade 6 events	11309	13099	10654	11010	12785
	2%	2%	1%	2%	2%
grade 7 events	418352	413517	472105	451985	456377
	82%	81%	84%	83%	83%

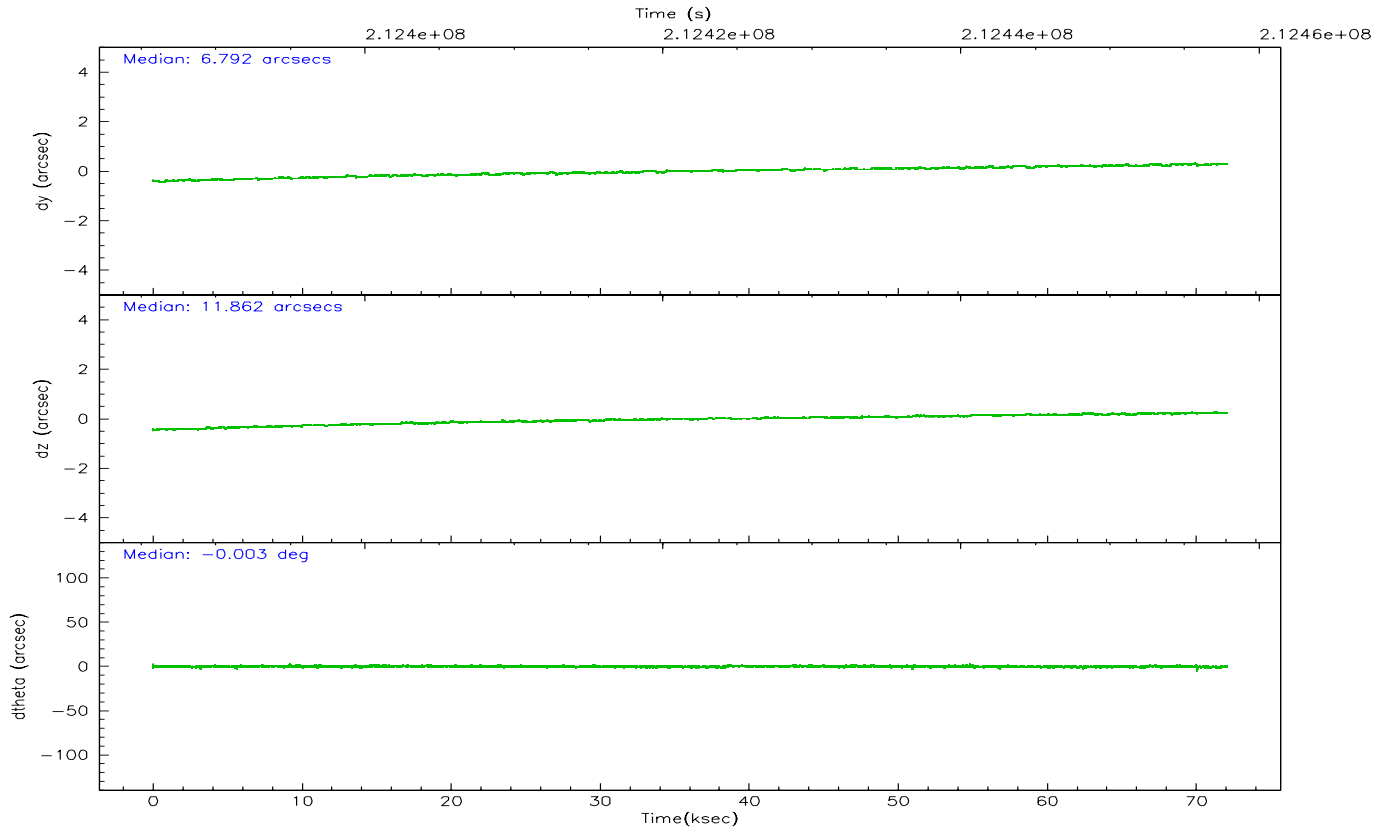
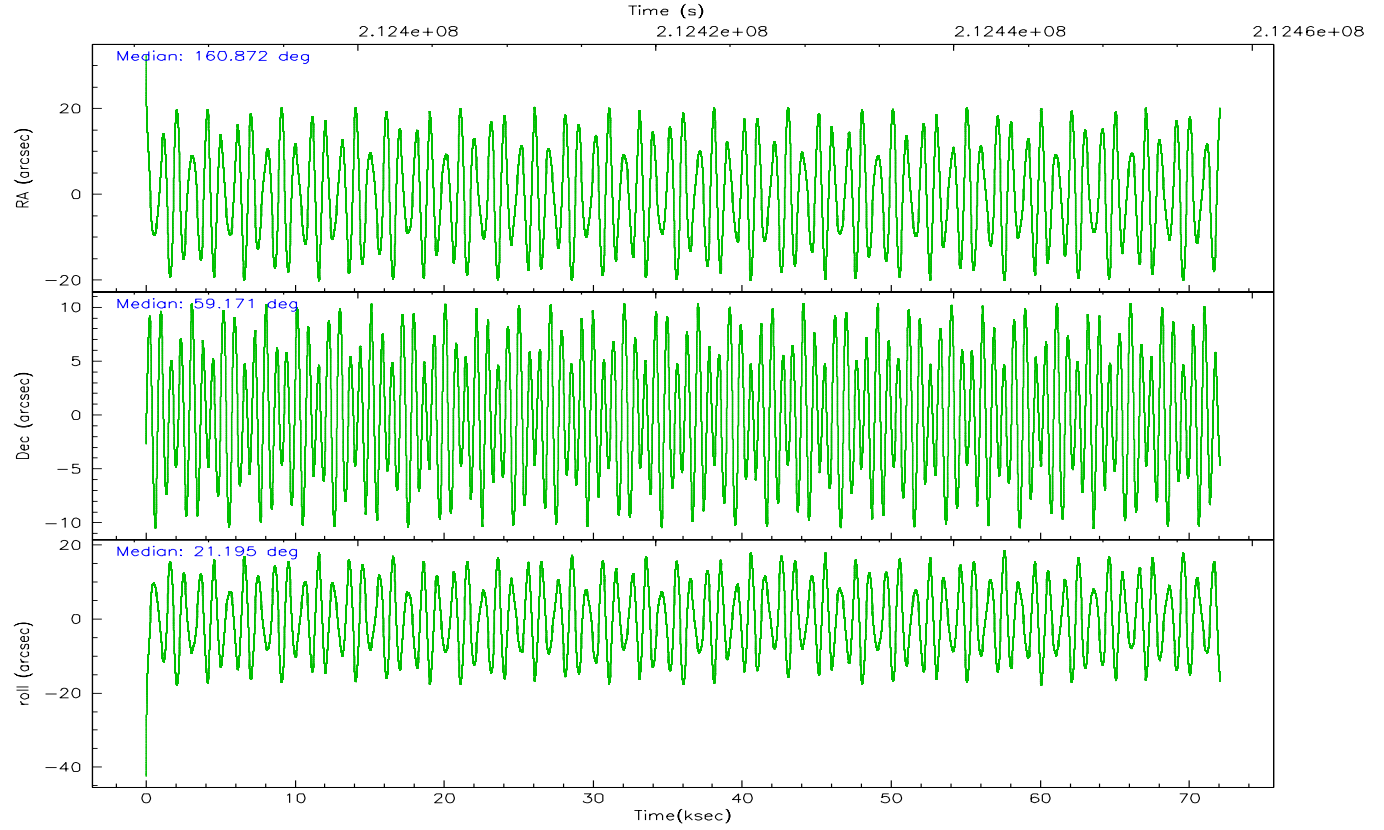


## 2.2 Compared Parameters

Parameter	Planned	Actual	Parameter	Planned	Actual
Instrument	ACIS	ACIS	Obspar format version number	6	6
Detector	ACIS-01236	ACIS-01236	Obspar file type	PREDICTED	ACTUAL
Grating	NONE	NONE	Obspar update status	NONE	UPDATED
Data mode	VFAINT	VFAINT	On-chip summing requested	N	N
Observation mode	POINTING	POINTING	Subarray requested	NONE	NONE
Pointing RA	160.839225	160.8725011506643	Alternating exposures requested	N	N
Pointing Dec	59.149300	59.17070915529752	Primary exposure time	0.000000	3.1
Pointing Roll	21.020822	21.20093099715645			
Roll angle	19.200000	19.200000			
Roll tolerance	1.800000	1.800000			
Roll constraint allows 180D rotation	Y	Y			
SIM focus pos (mm)	-0.782348	-0.7809083437167272			
SIM defocus (mm)	0	0.001439871863259334			
SIM translation stage pos (mm)	-233.592463	-233.5874344608287			
SIM translation stage offset (mm)	0	-0.005018542100998502			
Observation start time	212385915.184000	212384659.61635			
Observation start date	2004-09-24T04:04:11	2004-09-24T03:44:19			
Observation end time	212457865.184000	212458098.81963			
Observation end date	2004-09-25T00:03:21	2004-09-25T00:08:18			
Read mode	TIMED	TIMED			

## 2.3 Aspect



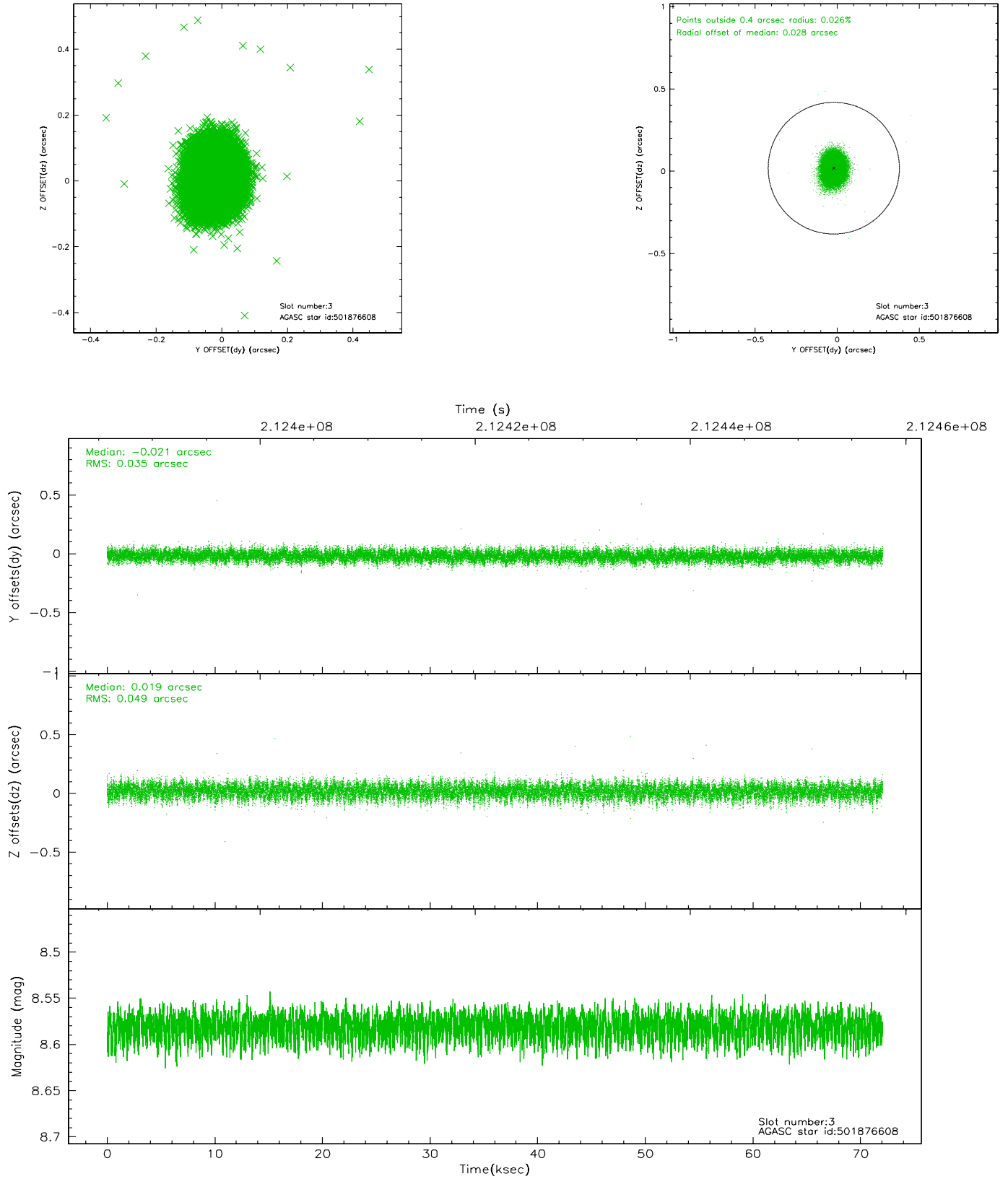


### Slot Statistics

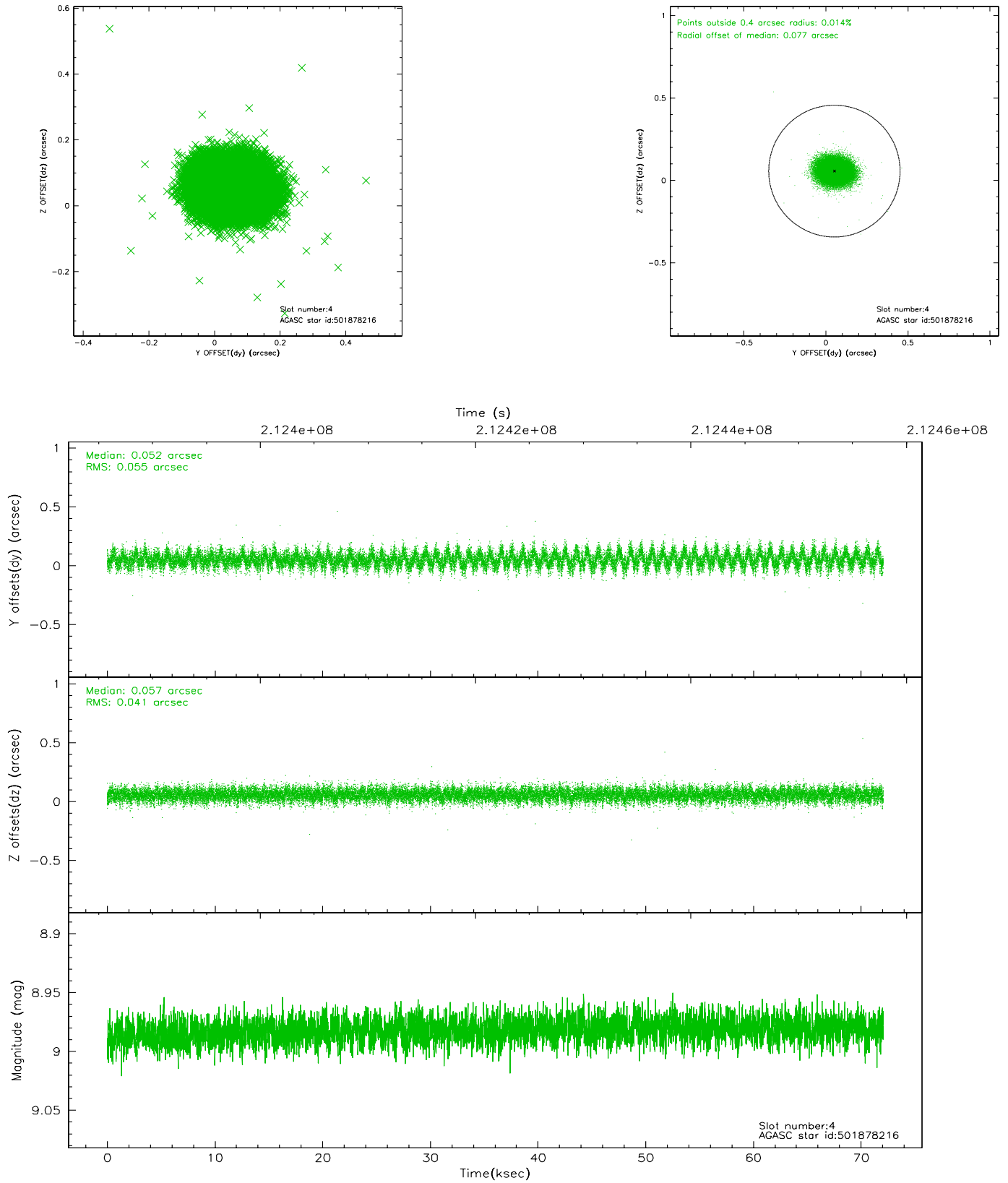
slot	status	id	mag	n_pts	med_dy	med_dz	dr1	dr2	ra	dec	mean_y	mean_z
0	FID	ACIS-I-2	7.14	17576	-0.064	-0.073	0.015	0.023	0.000000	0.000000	-761.32	-841.79
1	FID	ACIS-I-4	7.18	17581	0.067	0.061	0.016	0.026	0.000000	0.000000	2152.89	1064.57
2	FID	ACIS-I-5	7.22	17580	-0.104	0.080	0.015	0.023	0.000000	0.000000	-1815.27	1062.34
3	GUIDE	501876608	8.58	35157	-0.021	0.019	0.063	0.103	161.204341	58.717464	80.34	-1694.20
4	GUIDE	501878216	8.98	35147	0.052	0.057	0.072	0.118	161.663048	59.249982	1549.16	-196.64
5	GUIDE	501878576	7.84	35153	-0.054	0.043	0.042	0.068	161.532118	59.060873	1085.63	-750.77
6	GUIDE	501882104	8.43	35158	0.182	-0.073	0.066	0.104	160.237120	59.342503	-780.37	1049.70
7	GUIDE	501880360	8.30	35150	-0.162	-0.046	0.055	0.089	161.850113	59.665463	2387.19	1088.55

## 2.4 Star Slots

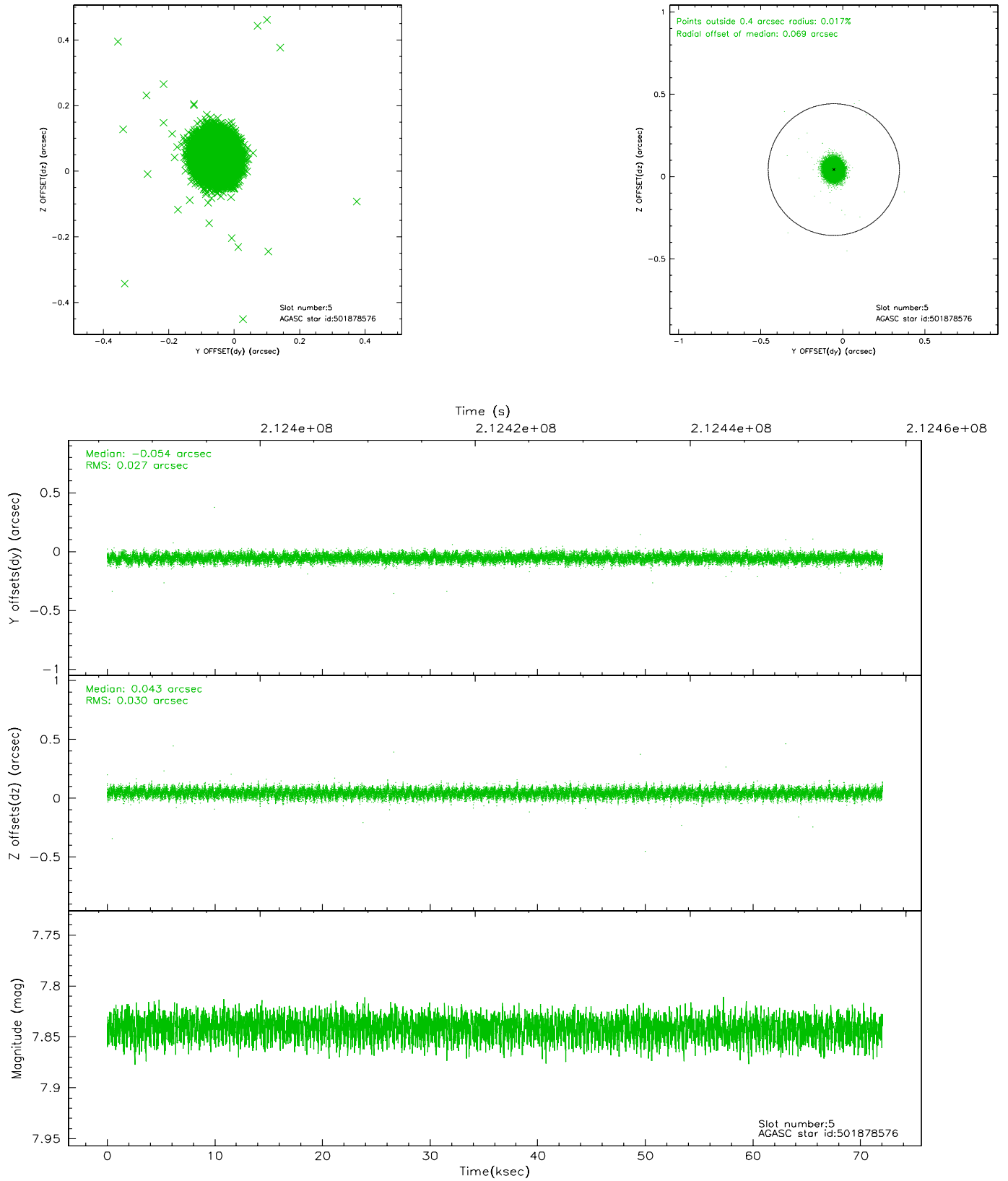
### 2.4.1 Slot 3



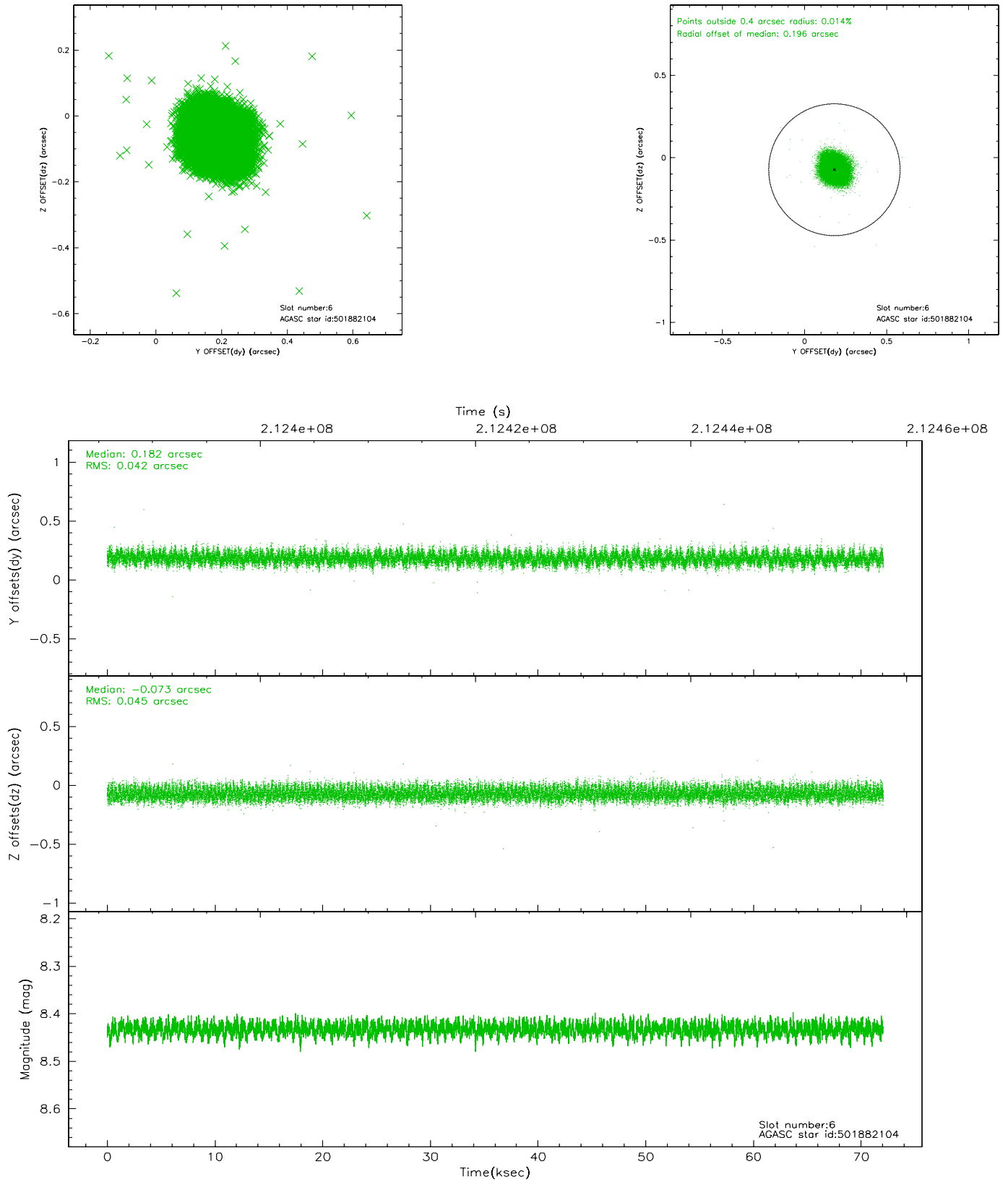
## 2.4.2 Slot 4



### 2.4.3 Slot 5

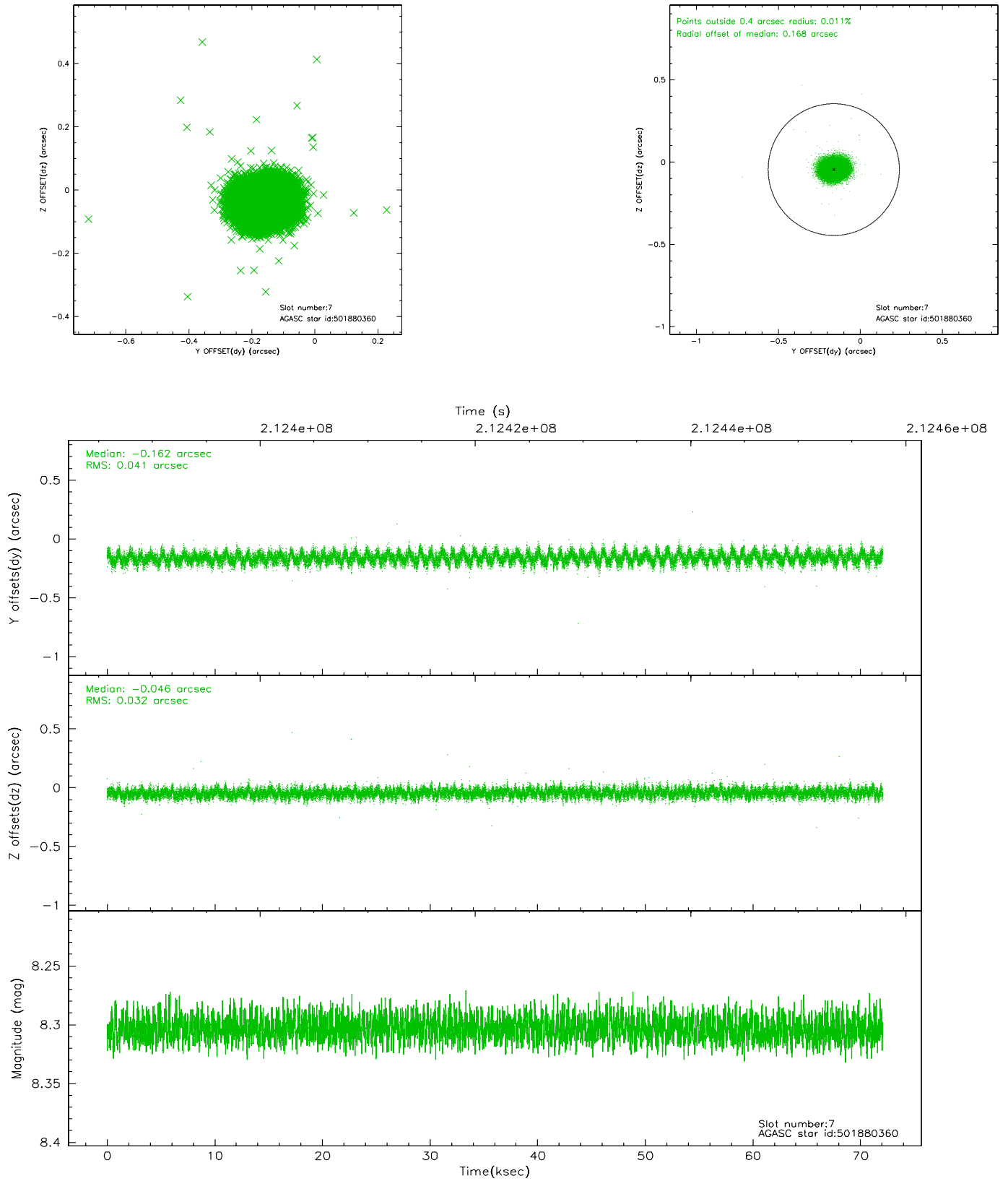


## 2.4.4 Slot 6



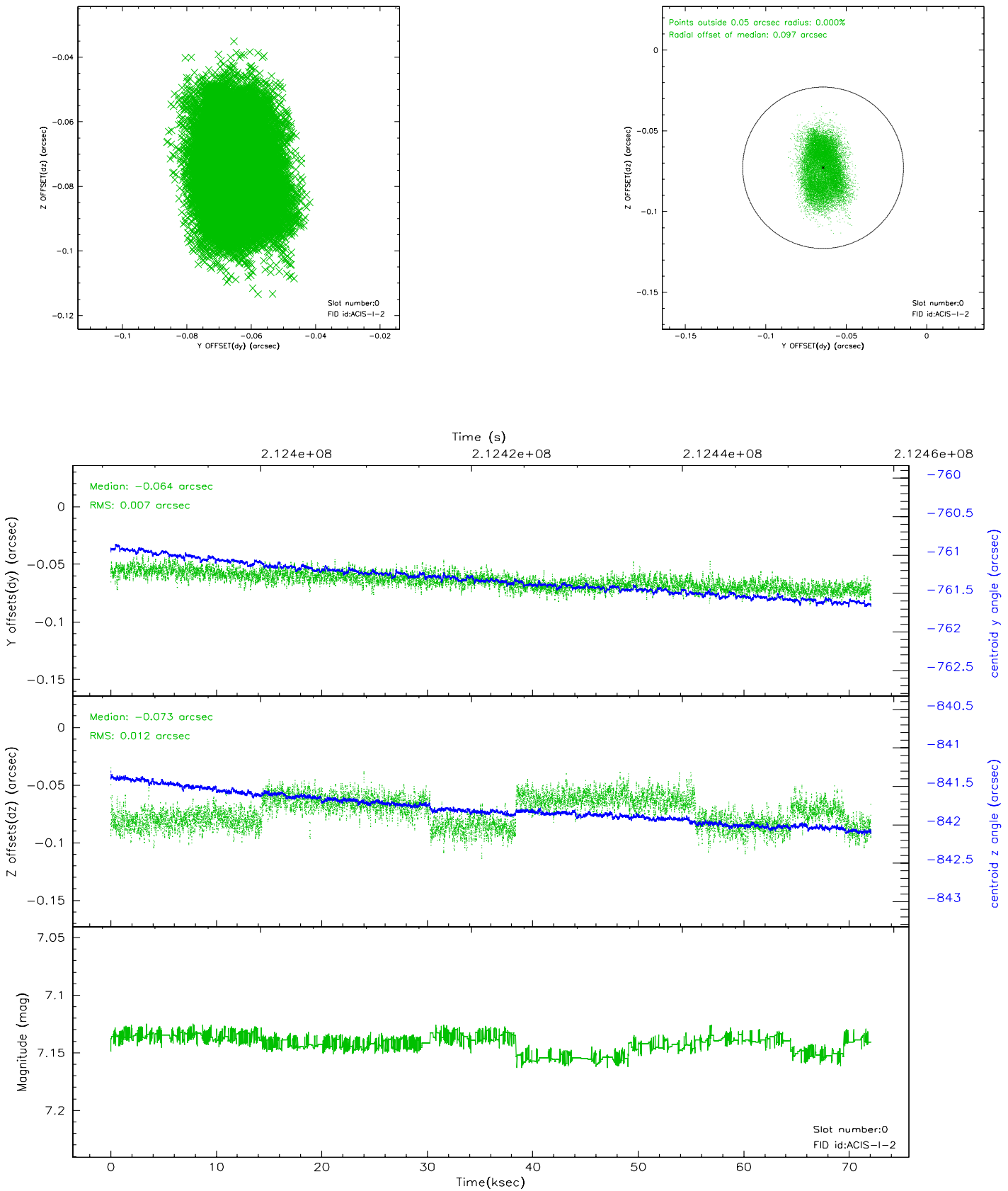


## 2.4.5 Slot 7

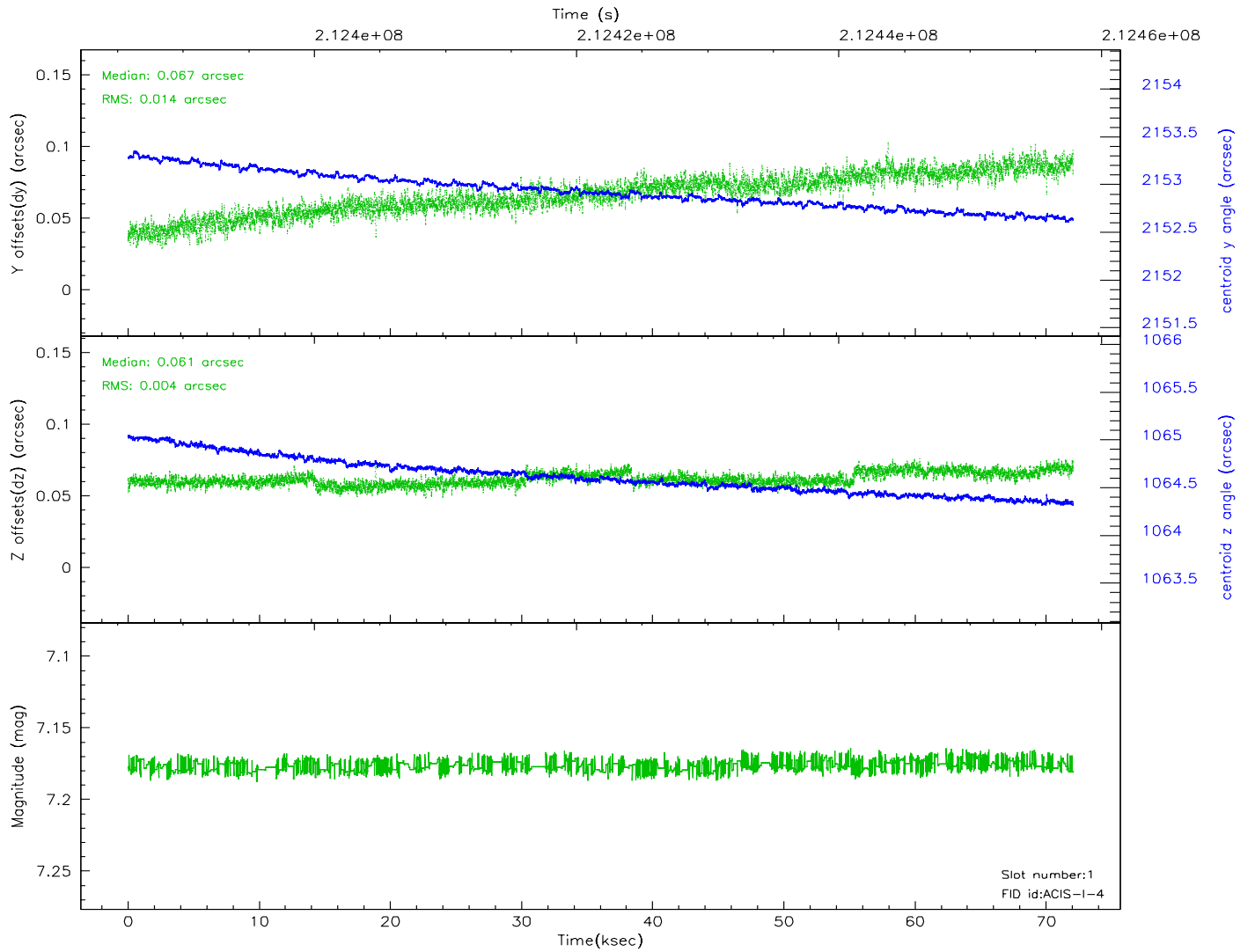
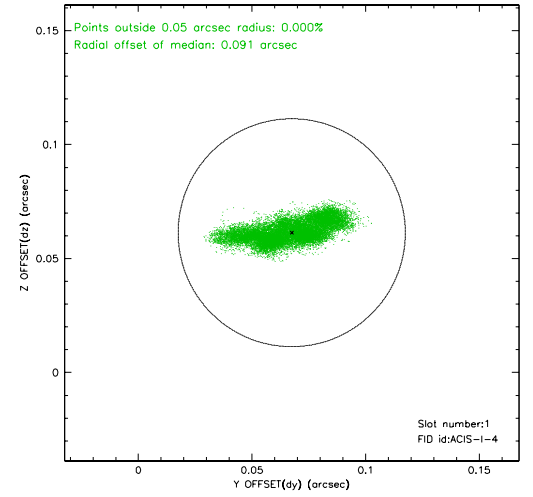
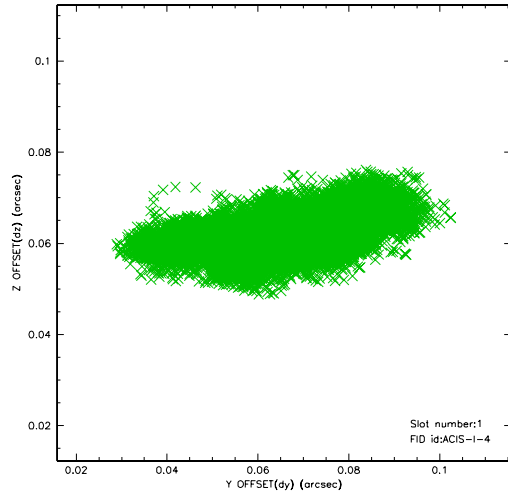


## 2.5 FID Slots

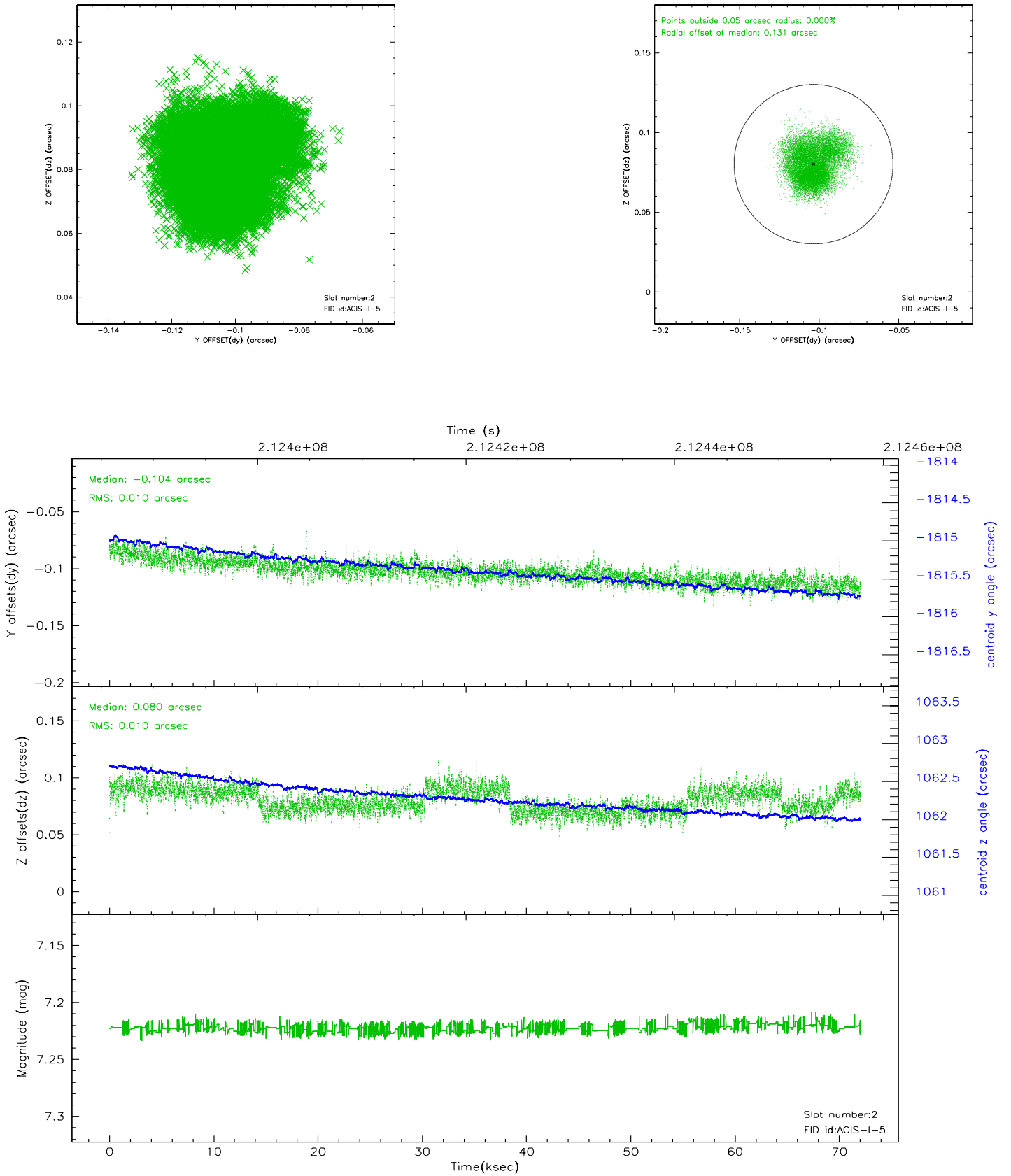
### 2.5.1 Slot 0



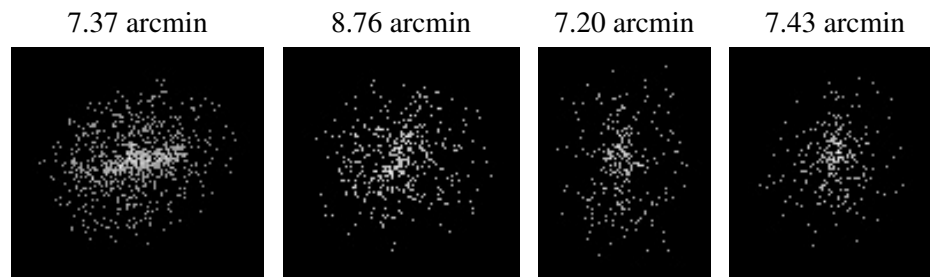
## 2.5.2 Slot 1



### 2.5.3 Slot 2



### 3 Point Sources



## A Summary

### A.1 Status

V&V Scientist	Jen Lauer
V&V Date (YYYY-MM-DD)	2006.04.17
V&V Edition	1
V&V Disposition and Status	OK
V&V Charge Time	72.068

### A.2 Comments

Roll constraint not met: roll is 0.2 degrees outside of roll constraint range.