

V&V Reference Report

L2 ASCDS Version : 8.4.5

Observation 439 - L2 Version 4
Chandra X-Ray Center

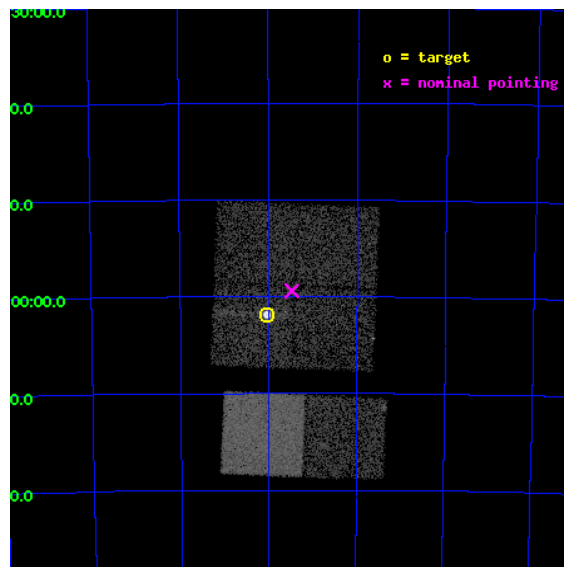
L2 Processing Date : Aug 25 2012

Contents

1	Front	2
2	OBI	3
2.1	OBI	3
2.1.1	Images	3
2.1.2	Bias	3
2.1.3	Parameters	4
2.1.4	Events	4
2.2	Compared Parameters	5
2.3	Aspect	6
2.4	Star Slots	9
2.4.1	Slot 3	9
2.4.2	Slot 4	10
2.4.3	Slot 5	11
2.4.4	Slot 6	12
2.4.5	Slot 7	13
2.5	FID Slots	14
2.5.1	Slot 0	14
2.5.2	Slot 1	15
2.5.3	Slot 2	16
A	Summary	17
A.1	Status	17
A.2	Comments	17

1 Front

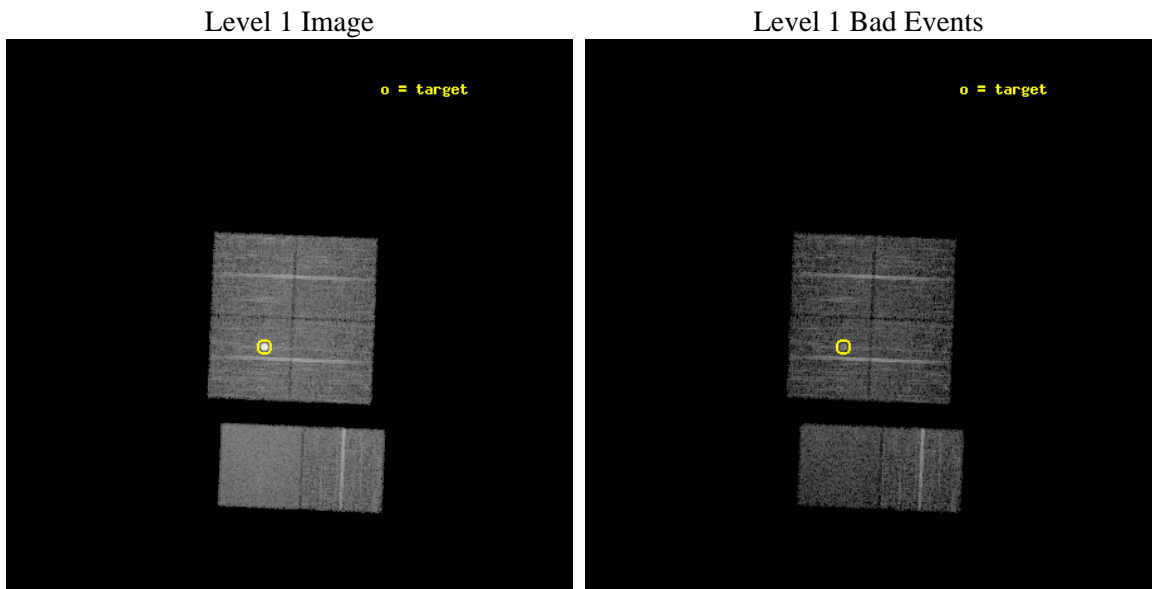
seq_num	590111	Sequence number
obs_id	439	Observation id
title	ACIS CHIP RESPONSE TO LINES WITH E=0.6-1.5 KEV	Proposal title
observer	Dr. CXC Calibration	Principal investigator
object	E0102-72.3 [Chip I3, T=120, Offsets=-2,2,0]	Source name
dtcycle	0	
cycle	P	events from which exps? Prim/Second/Both
ra_targ	16.01	Observer's specified target RA [deg]
dec_targ	-72.032028	Observer's specified target Dec [deg]
ra_nom	15.868070776836	Nominal RA [deg]
dec_nom	-71.990078845887	Nominal Dec [deg]
roll_nom	182.37357069122	Nominal Roll [deg]
revision	4	Processing version of data
ontime	6953.6000064611	Sum of GTIs [s]
livetime	6865.5493362241	Livetime [s]
ontime0	6953.6000064611	Sum of GTIs [s]
ontime1	6953.6000064611	Sum of GTIs [s]
ontime2	6953.6000064611	Sum of GTIs [s]
ontime3	6953.6000064611	Sum of GTIs [s]
ontime6	6953.6000064611	Sum of GTIs [s]
ontime7	6953.6000064611	Sum of GTIs [s]
l2events	73554	Number of level 2 events



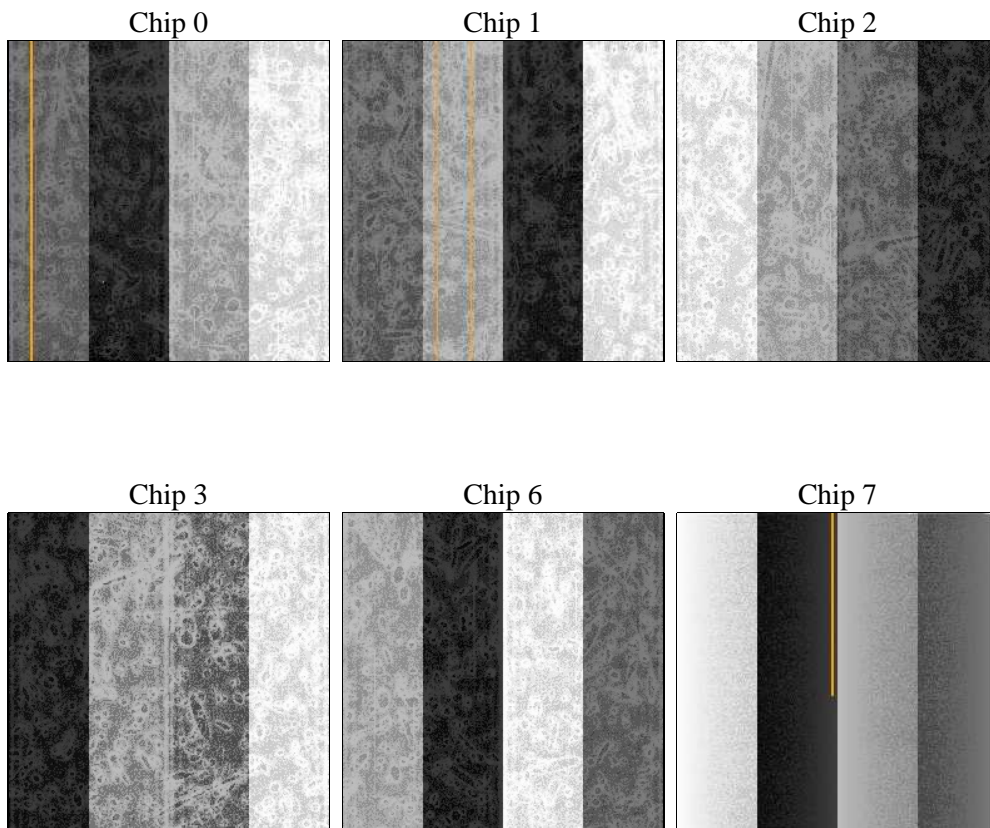
2 OBI

2.1 OBI

2.1.1 Images



2.1.2 Bias



2.1.3 Parameters

obi_num	1	Obi number	sched_exp_time	7200.000000	[s] Scheduled observation exposure time
ascdsver	8.4.5	Processing system revision	ontime	6953.6000064611	Sum of GTIs [s]
caldsver	4.5.1.1	 	ontime0	6953.6000064611	Sum of GTIs [s]
date	2012-08-25T03:28:54	Date and time of file creation	ontime1	6953.6000064611	Sum of GTIs [s]
revision	4	Processing version of data	ontime2	6953.6000064611	Sum of GTIs [s]
			ontime3	6953.6000064611	Sum of GTIs [s]
			ontime6	6953.6000064611	Sum of GTIs [s]
			ontime7	6953.6000064611	Sum of GTIs [s]
			l1events	330074	Number of level 1 events

2.1.4 Events

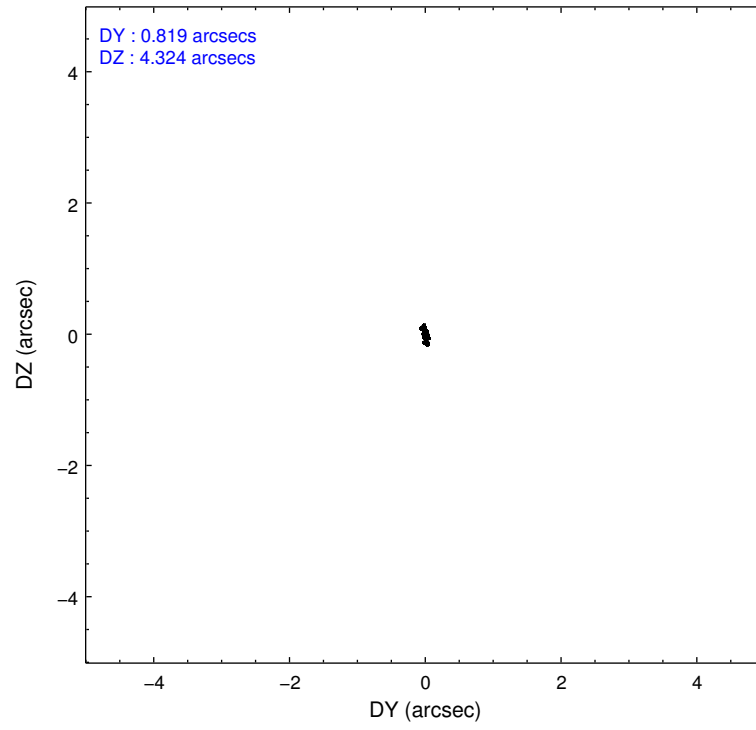
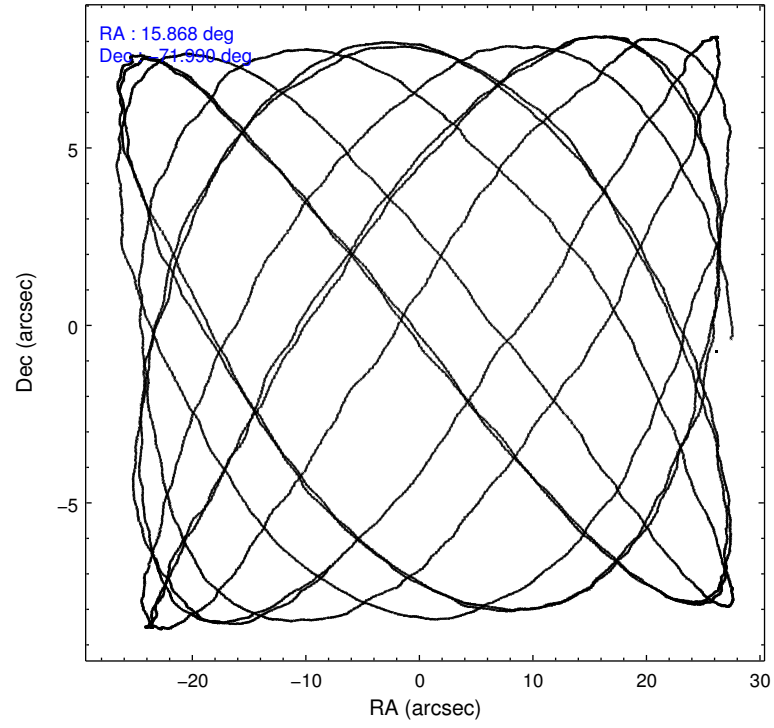
	ccd 0	ccd 1	ccd 2	ccd 3	ccd 6	ccd 7		ccd 0	ccd 1	ccd 2	ccd 3	ccd 6	ccd 7
level 1 events	44268	47787	49719	78748	51615	57937	grade 0 events	2542	2430	2256	27235	2392	2611
rejected events	38671	42123	44514	45736	46101	32894		5%	5%	4%	34%	4%	4%
rejected %	87%	88%	89%	58%	89%	56%	grade 1 events	21	24	23	283	19	53
								0%	0%	0%	0%	0%	0%
							grade 2 events	1097	1046	1046	2905	1039	4988
								2%	2%	2%	3%	2%	8%
							grade 3 events	548	613	520	922	562	2276
								1%	1%	1%	1%	1%	3%
							grade 4 events	529	614	501	944	507	2231
								1%	1%	1%	1%	0%	3%
							grade 5 events	1516	1692	1506	1706	1845	5425
								3%	3%	3%	2%	3%	9%
							grade 6 events	883	962	885	1023	1015	12950
								1%	2%	1%	1%	1%	22%
							grade 7 events	37132	40406	42982	43730	44236	27403
								83%	84%	86%	55%	85%	47%

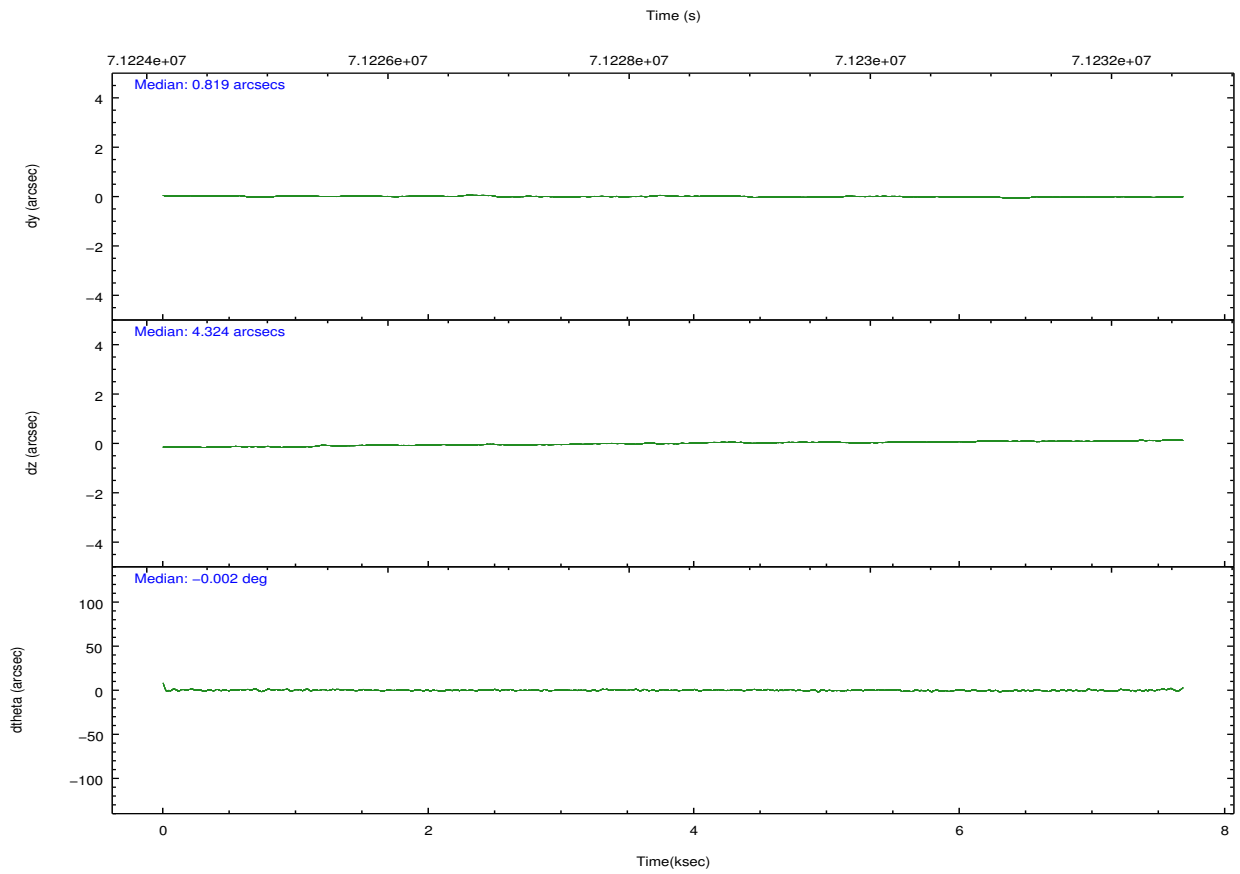
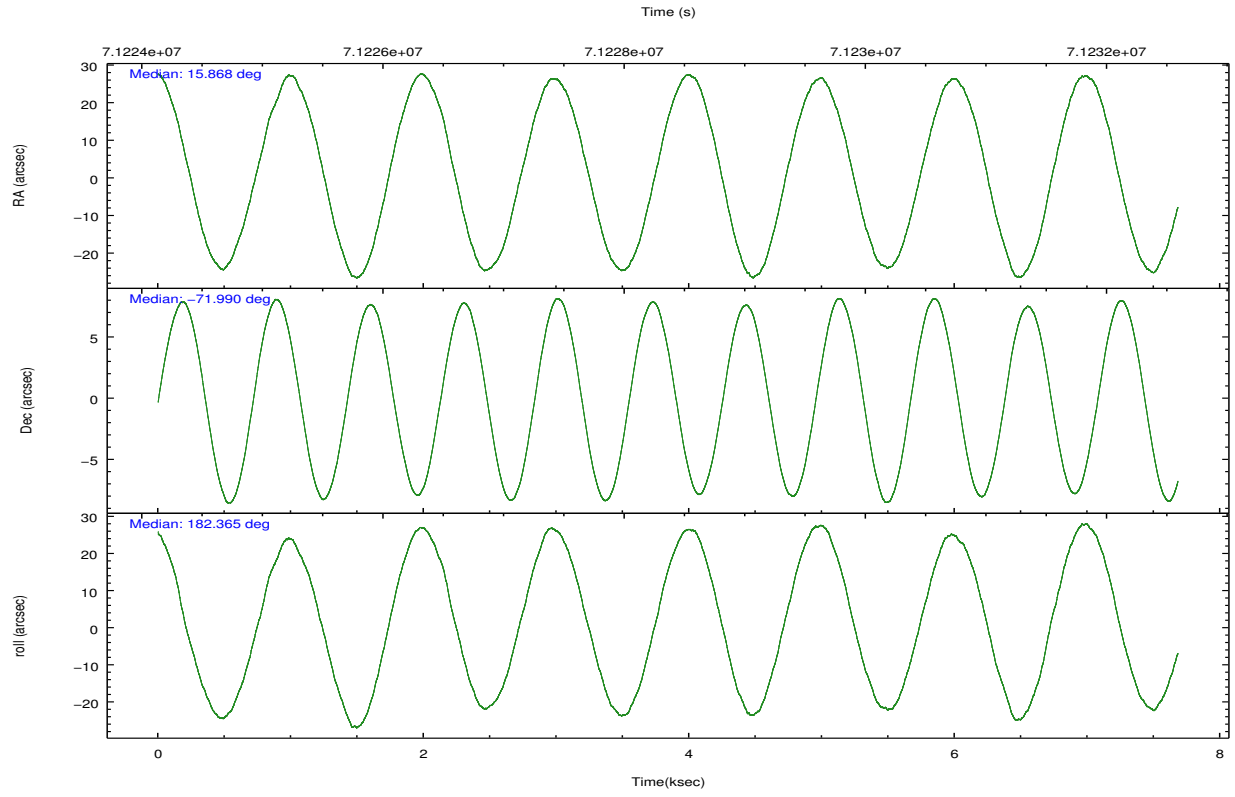
2.2 Compared Parameters

Parameter	Planned	Actual
Instrument	ACIS	ACIS
Detector	ACIS-012367	ACIS-012367
Grating	NONE	NONE
Data mode	FAINT	FAINT
Observation mode	POINTING	POINTING
[deg] Pointing RA	15.943895	15.86807077683638
[deg] Pointing Dec	-71.975465	-71.9900788458867
[deg] Pointing Roll	182.236986	182.3735706912163
[mm] SIM focus pos	-0.782348	-0.7809083437167272
[mm] SIM defocus	0	0.001439871863259334
[mm] SIM translation stage pos	-233.592463	-233.5874344608287
[mm] SIM translation stage offset	0	-0.005018542100998502
[s] Observation start time (MET)	71225006.184000	71224339.348929
Observation start date	2000-04-04T08:42:22	2000-04-04T08:32:19
[s] Observation end time (MET)	71232206.184000	71232339.474222
Observation end date	2000-04-04T10:42:22	2000-04-04T10:45:39
Read mode	TIMED	TIMED

Parameter	Planned	Actual
Obspar format version number	7	7
Obspar file type	PREDICTED	ACTUAL
Obspar update status	NONE	UPDATED
Number of optional ACIS chips dropped	0	0
On-chip summing requested	N	N
Subarray requested	NONE	NONE
Alternating exposures requested	N	N
[s] Primary exposure time	0.000000	3.2

2.3 Aspect



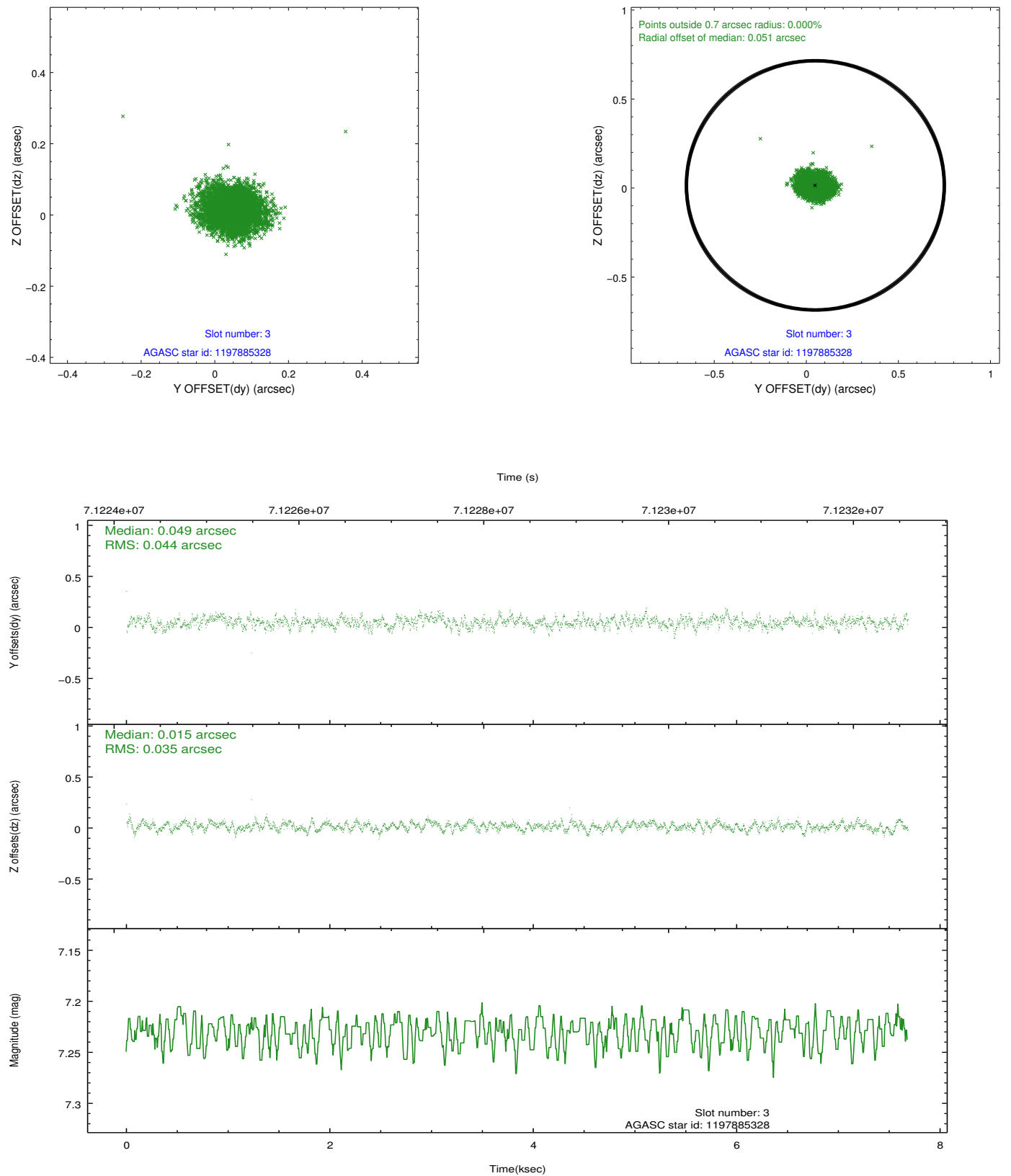


Slot Statistics

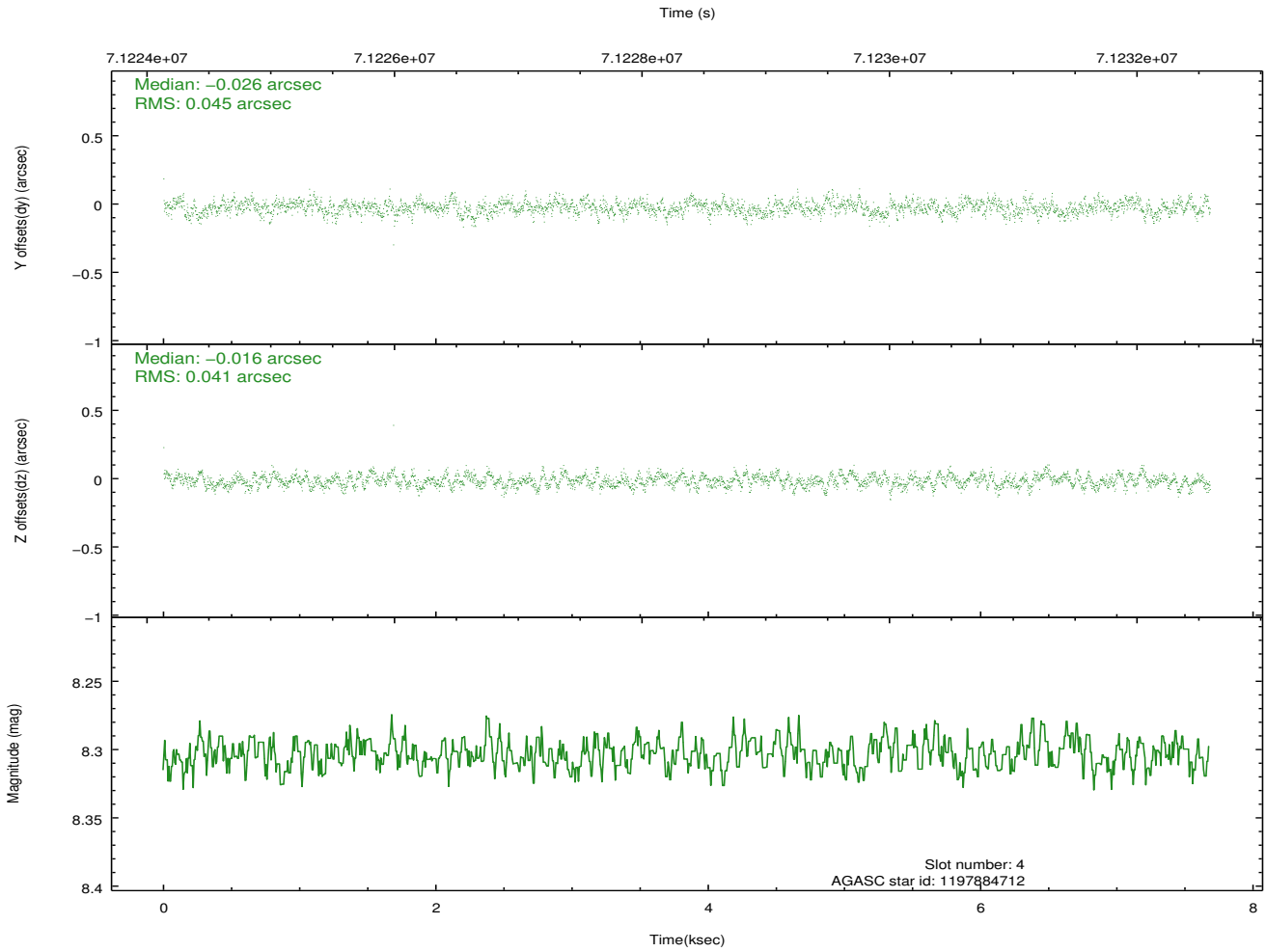
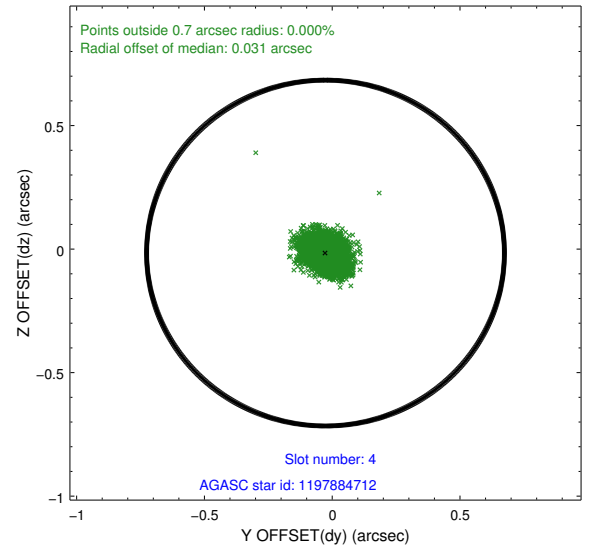
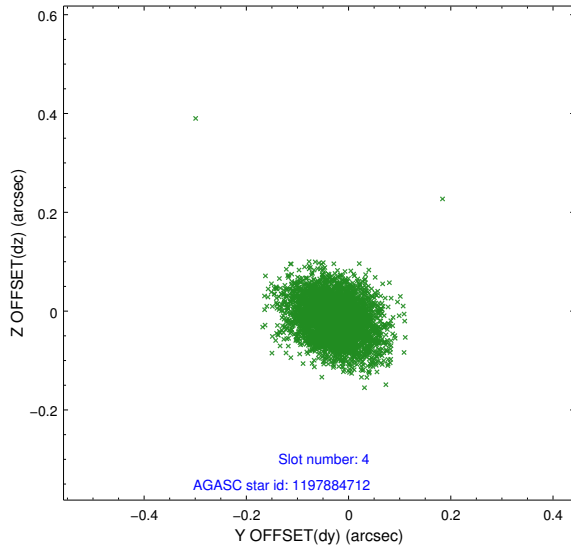
slot	status	id	mag	n_pts	med_dy	med_dz	dr1	dr2	ra	dec	mean_y	mean_z
0	FID	ACIS-I-2	7.15	1874	-0.033	-0.024	0.009	0.016	0.000000	0.000000	-755.17	-834.02
1	FID	ACIS-I-4	7.20	1874	-0.021	0.034	0.007	0.011	0.000000	0.000000	2158.57	1071.83
2	FID	ACIS-I-5	7.23	1874	-0.047	0.059	0.010	0.016	0.000000	0.000000	-1808.05	1070.56
3	GUIDE	1197885328	7.23	3749	0.049	0.015	0.059	0.096	16.283090	-71.733943	-416.55	-853.02
4	GUIDE	1197884712	8.30	3748	-0.026	-0.016	0.064	0.106	16.087398	-72.252690	-119.03	1003.16
5	GUIDE	1197750640	9.73	3741	0.016	-0.111	0.093	0.154	15.758835	-72.088048	220.15	397.34
6	GUIDE	1197878768	9.61	3748	0.023	0.172	0.115	0.179	16.656786	-71.304581	-916.06	-2376.42
7	GUIDE	1197749664	9.58	3746	-0.060	-0.060	0.088	0.144	15.809015	-72.366369	201.05	1399.78

2.4 Star Slots

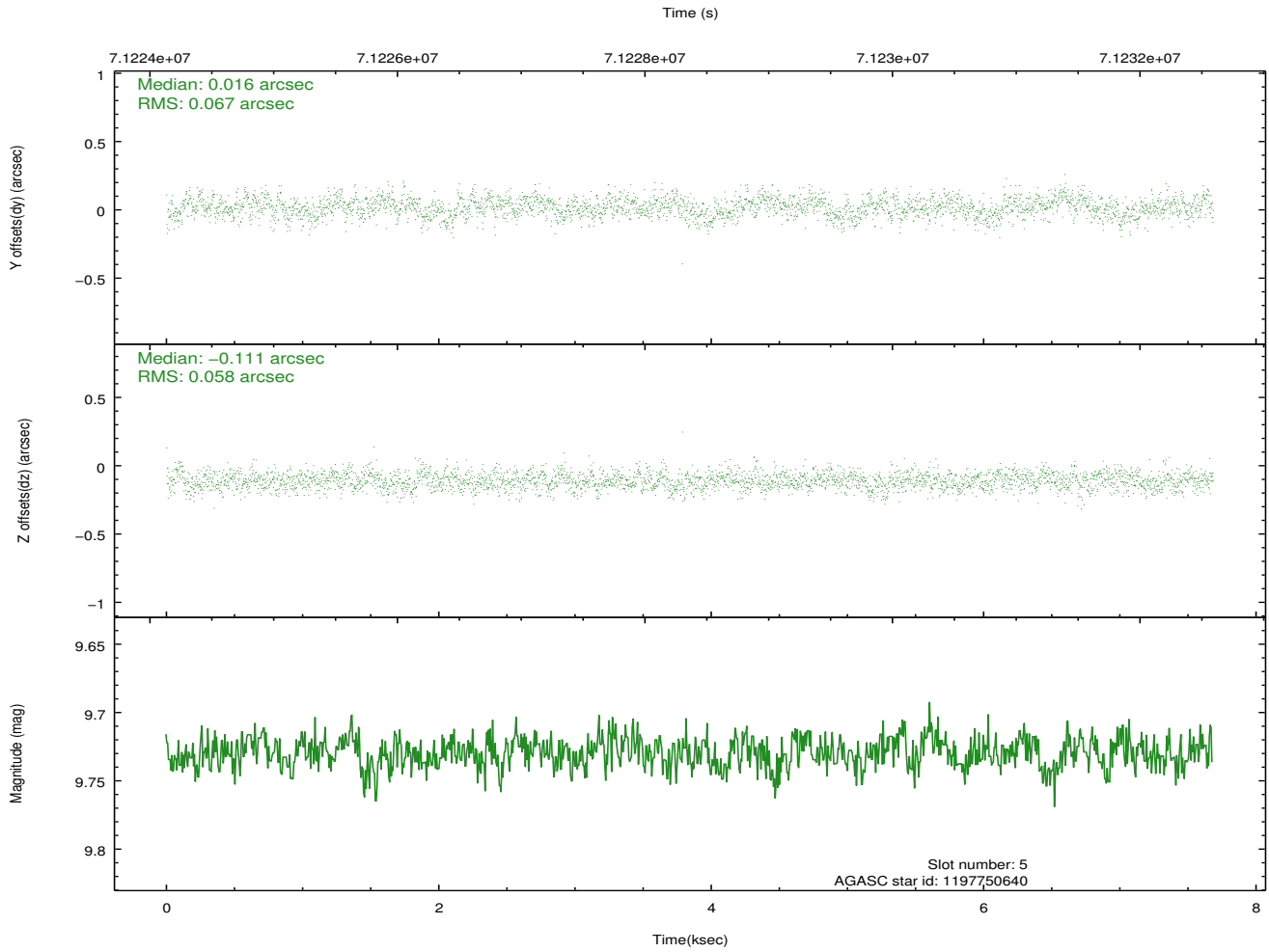
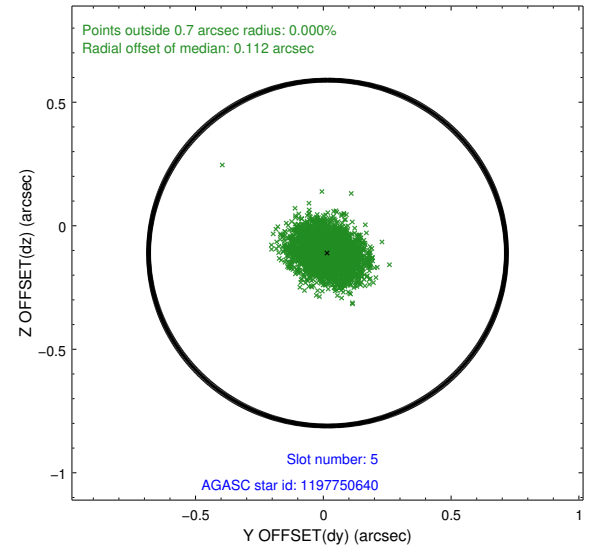
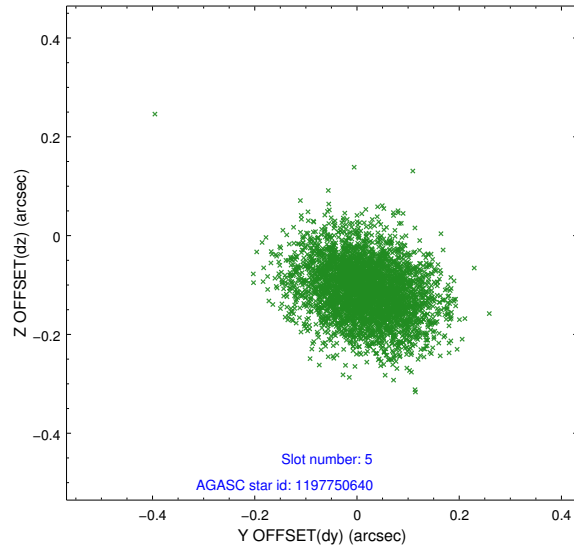
2.4.1 Slot 3



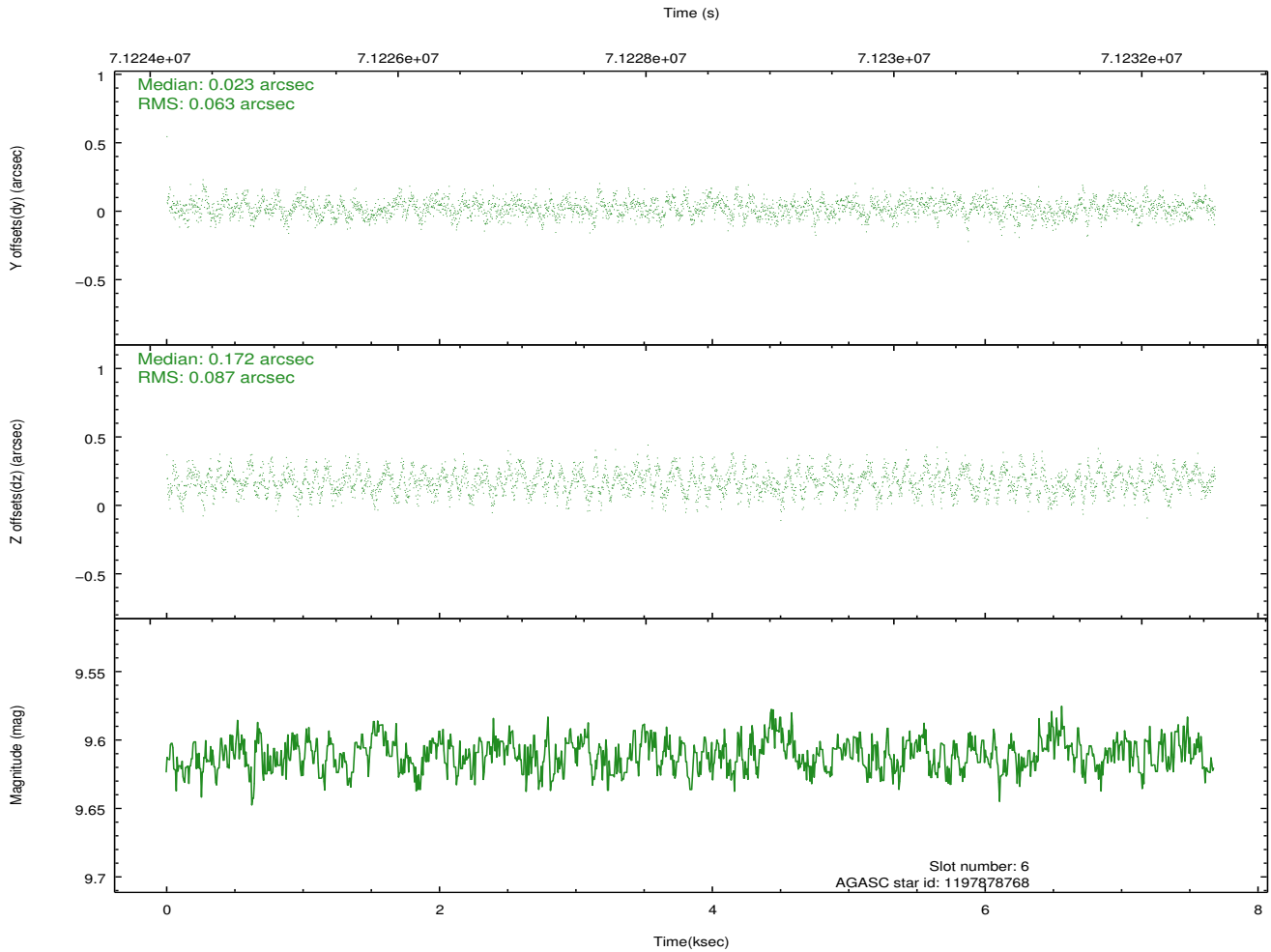
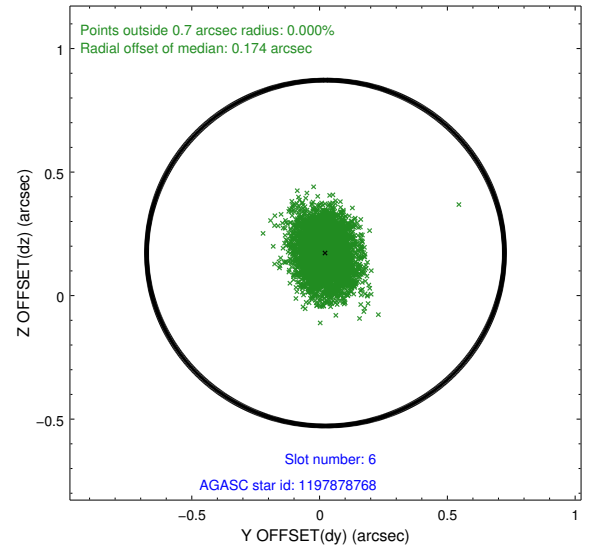
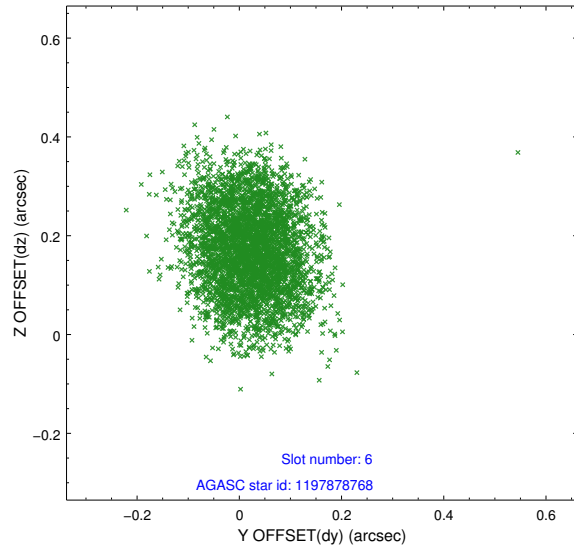
2.4.2 Slot 4



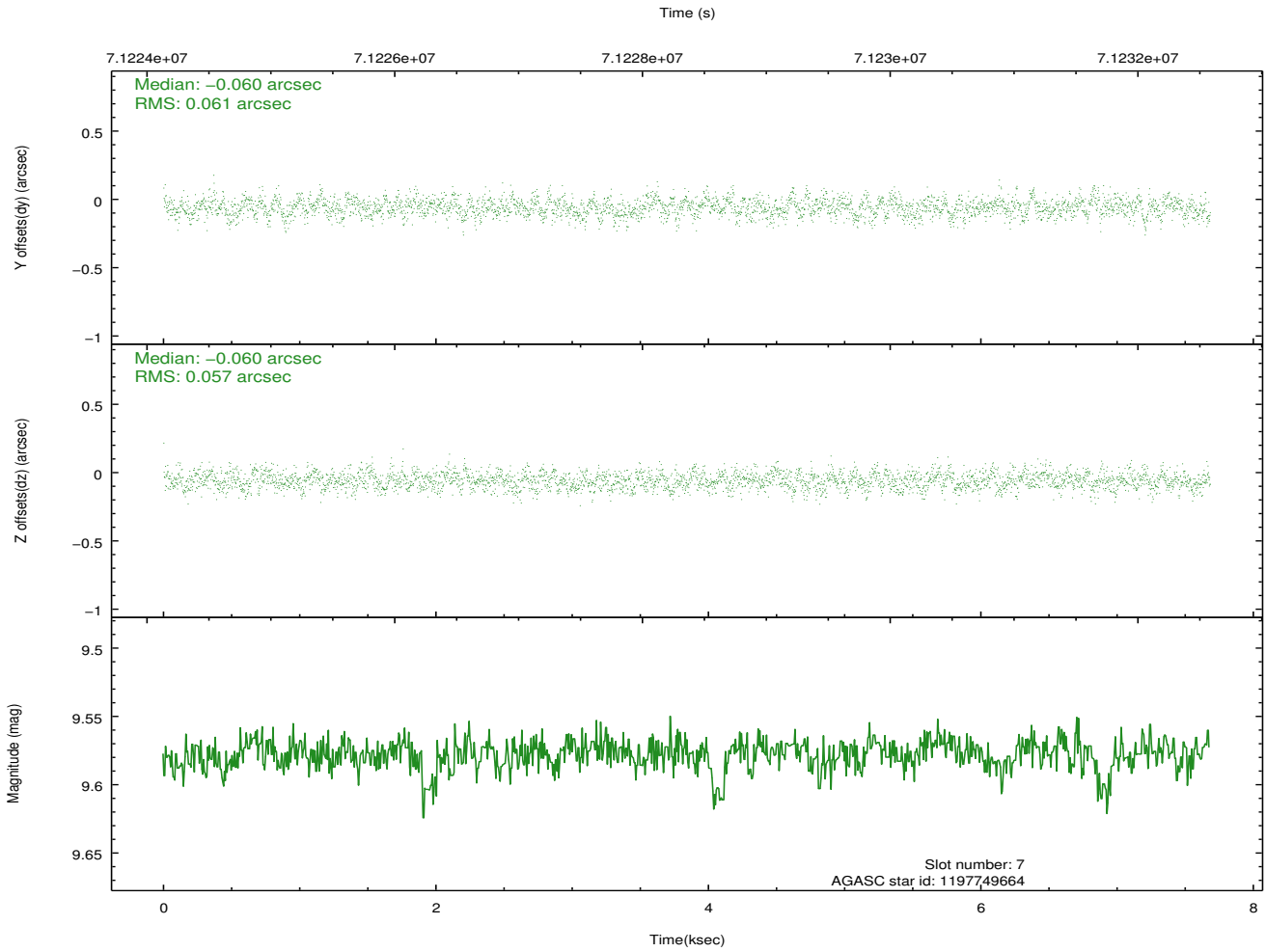
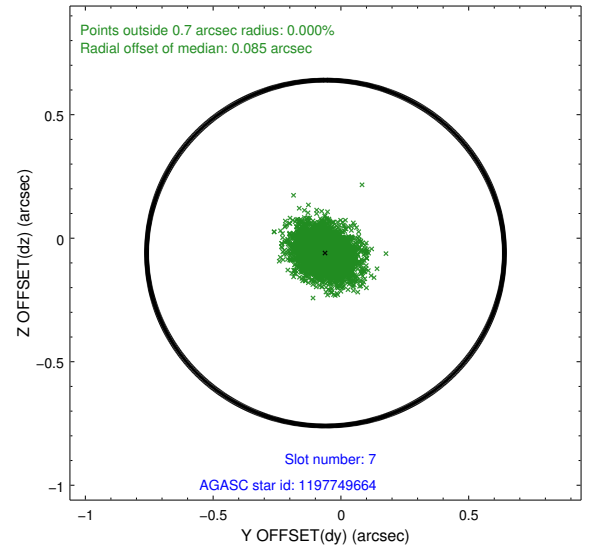
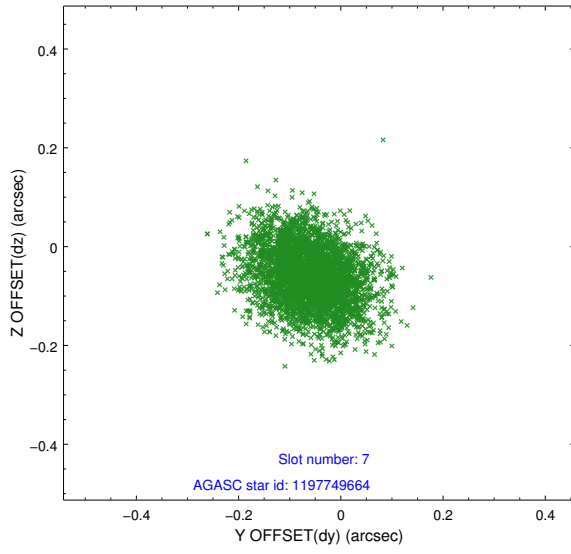
2.4.3 Slot 5



2.4.4 Slot 6

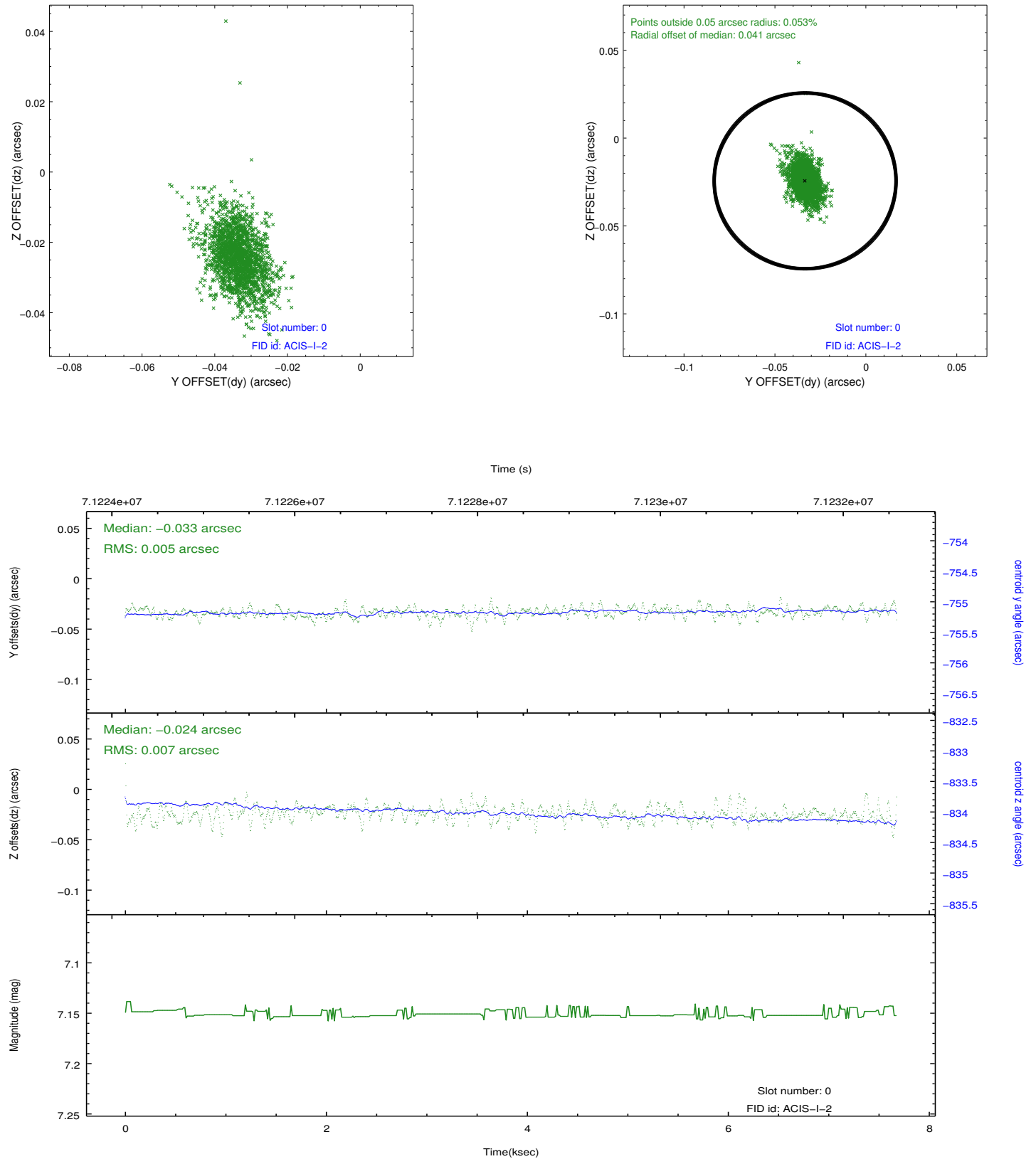


2.4.5 Slot 7

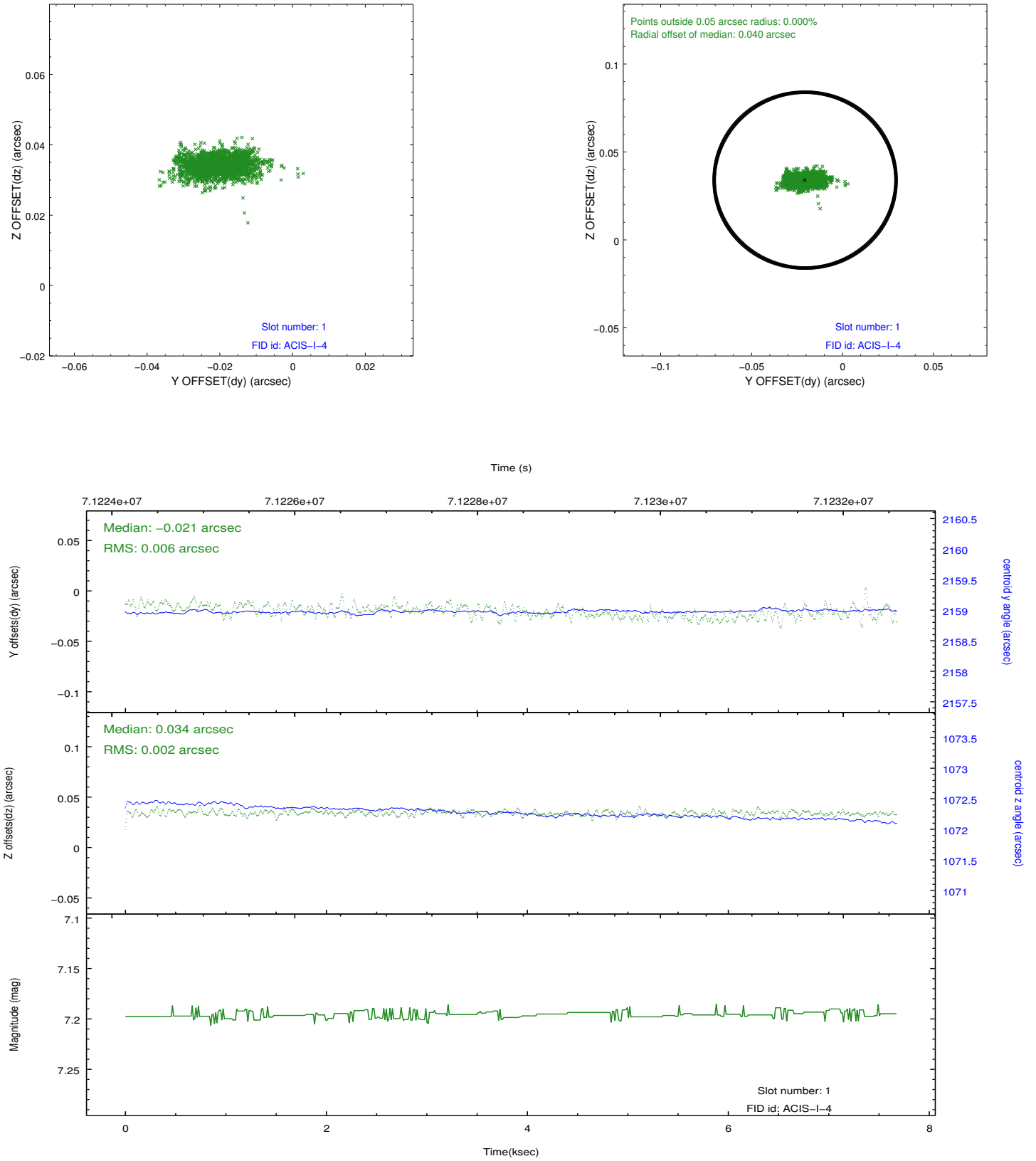


2.5 FID Slots

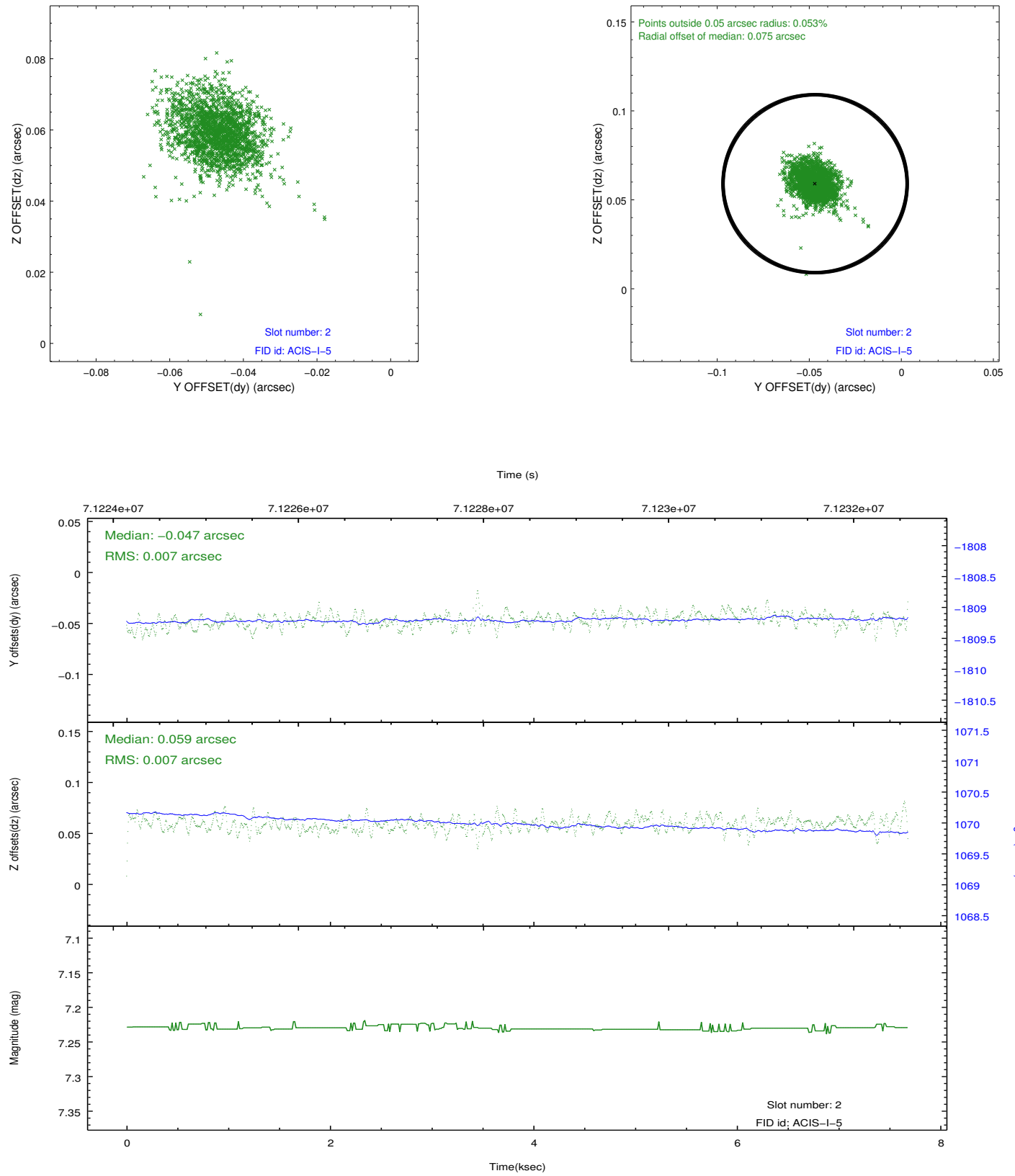
2.5.1 Slot 0



2.5.2 Slot 1



2.5.3 Slot 2



A Summary

A.1 Status

V&V Scientist	Jen Lauer
V&V Date (YYYY-MM-DD)	2012.08.28
V&V Edition	1
V&V Disposition and Status	OK
V&V Charge Time	6.953

A.2 Comments