

V&V Reference Report

L2 ASCDS Version : 8.4.5

Observation 4259 - L2 Version 3
Chandra X-Ray Center

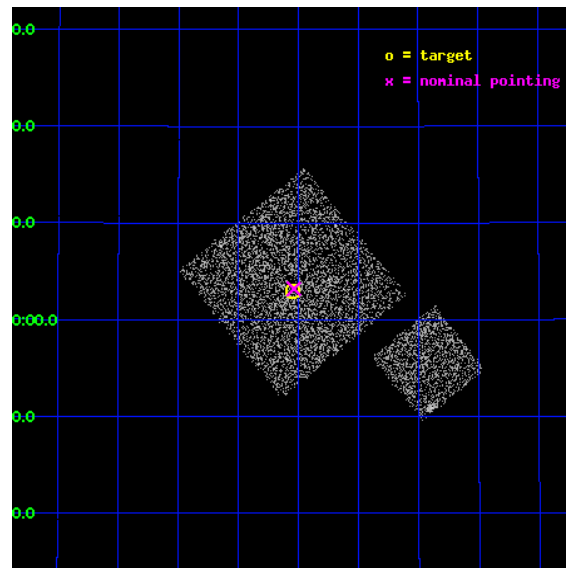
L2 Processing Date : Oct 26 2012

Contents

1	Front	2
2	OBI	3
2.1	OBI	3
2.1.1	Images	3
2.1.2	Bias	3
2.1.3	Parameters	4
2.1.4	Events	4
2.2	Compared Parameters	5
2.3	Aspect	6
2.4	Star Slots	9
2.4.1	Slot 3	9
2.4.2	Slot 4	10
2.4.3	Slot 5	11
2.4.4	Slot 6	12
2.4.5	Slot 7	13
2.5	FID Slots	14
2.5.1	Slot 0	14
2.5.2	Slot 1	15
2.5.3	Slot 2	16
A	Summary	17
A.1	Status	17
A.2	Comments	17

1 Front

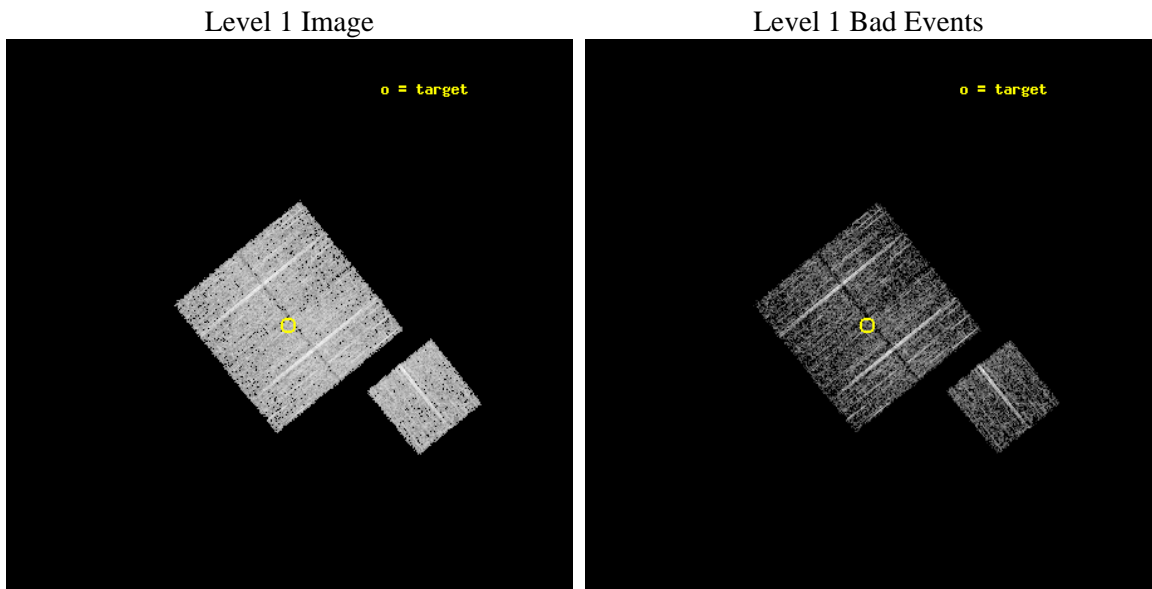
seq_num	900302	Sequence number
obs_id	4259	Observation id
title	A CHANDRA WIDE-FIELD SURVEY TO MAP THE COSMIC WEB AND INVESTIGATE THE EVOLUTION OF NUCLEAR ACCRETION	Proposal title
observer	Dr. Christine Jones	Principal investigator
object	SS20	Source name
dtcycle	0	
cycle	P	events from which exps? Prim/Second/Both
ra_targ	217.38708	Observer's specified target RA [deg]
dec_targ	33.04953	Observer's specified target Dec [deg]
ra_nom	217.38446255773	Nominal RA [deg]
dec_nom	33.053579620393	Nominal Dec [deg]
roll_nom	141.0101128078	Nominal Roll [deg]
revision	3	Processing version of data
ontime	4568.2617811859	Sum of GTIs [s]
livetime	4508.5740779093	Livetime [s]
ontime0	4571.2796613276	Sum of GTIs [s]
ontime1	4571.3206814229	Sum of GTIs [s]
ontime2	4571.3617214262	Sum of GTIs [s]
ontime3	4568.2617811859	Sum of GTIs [s]
ontime6	4568.0976311862	Sum of GTIs [s]
l2events	9253	Number of level 2 events



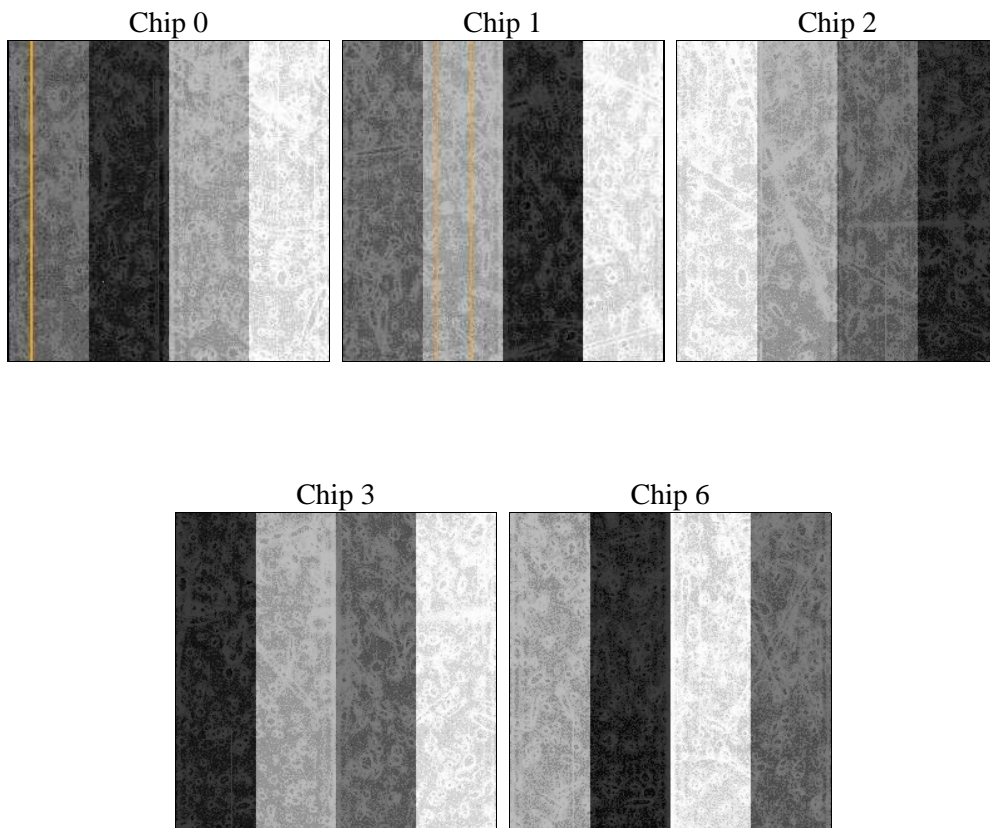
2 OBI

2.1 OBI

2.1.1 Images



2.1.2 Bias



2.1.3 Parameters

obi_num	1	Obi number	sched_exp_time	4800.000000	[s] Scheduled observation exposure time
ascdsver	8.4.5	Processing system revision	ontime	4568.2617811859	Sum of GTIs [s]
caldsver	4.5.2	 	ontime0	4571.2796613276	Sum of GTIs [s]
date	2012-10-26T00:16:50	Date and time of file creation	ontime1	4571.3206814229	Sum of GTIs [s]
revision	3	Processing version of data	ontime2	4571.3617214262	Sum of GTIs [s]
			ontime3	4568.2617811859	Sum of GTIs [s]
			ontime6	4568.0976311862	Sum of GTIs [s]
			l1events	113227	Number of level 1 events

2.1.4 Events

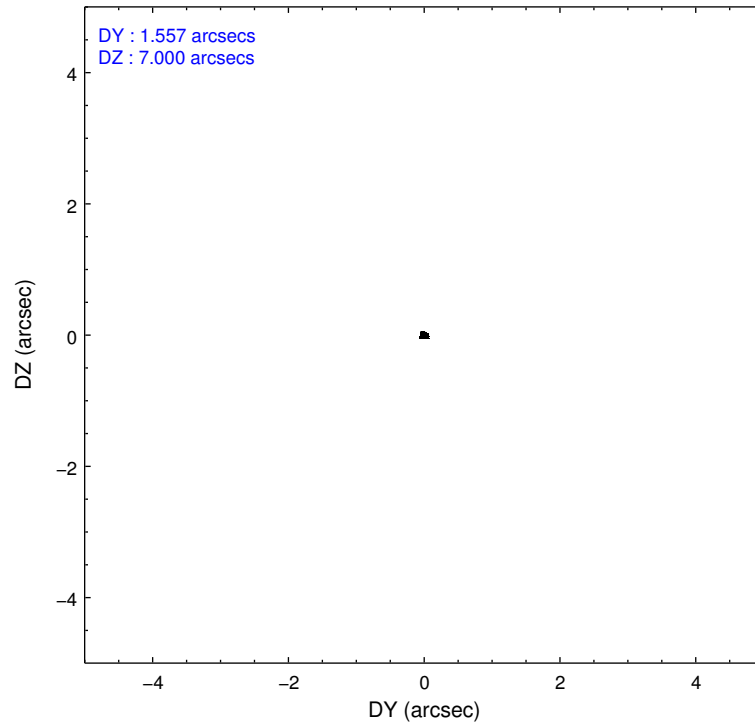
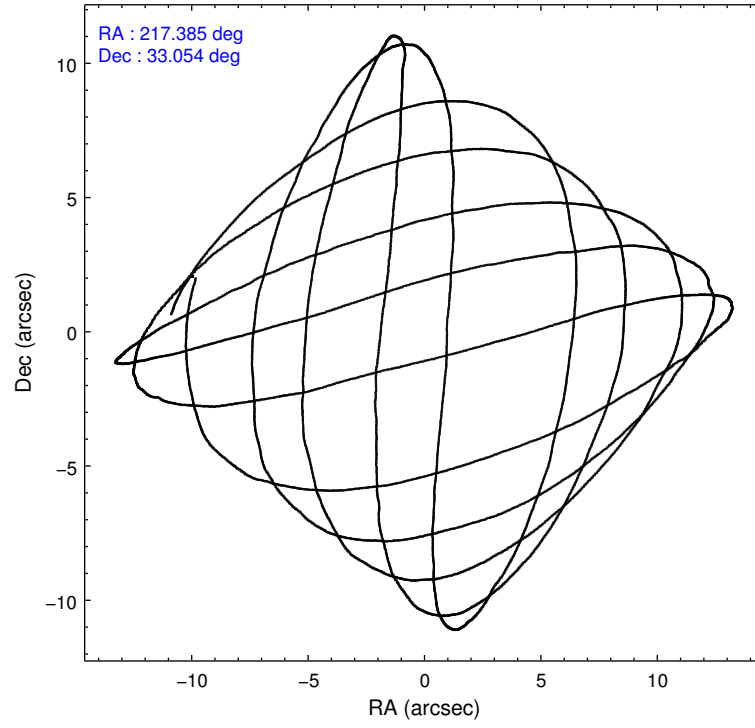
	ccd 0	ccd 1	ccd 2	ccd 3	ccd 6
level 1 events	21500	21626	25341	23042	21718
rejected events	19317	19232	23108	20821	19480
rejected %	89%	88%	91%	90%	89%

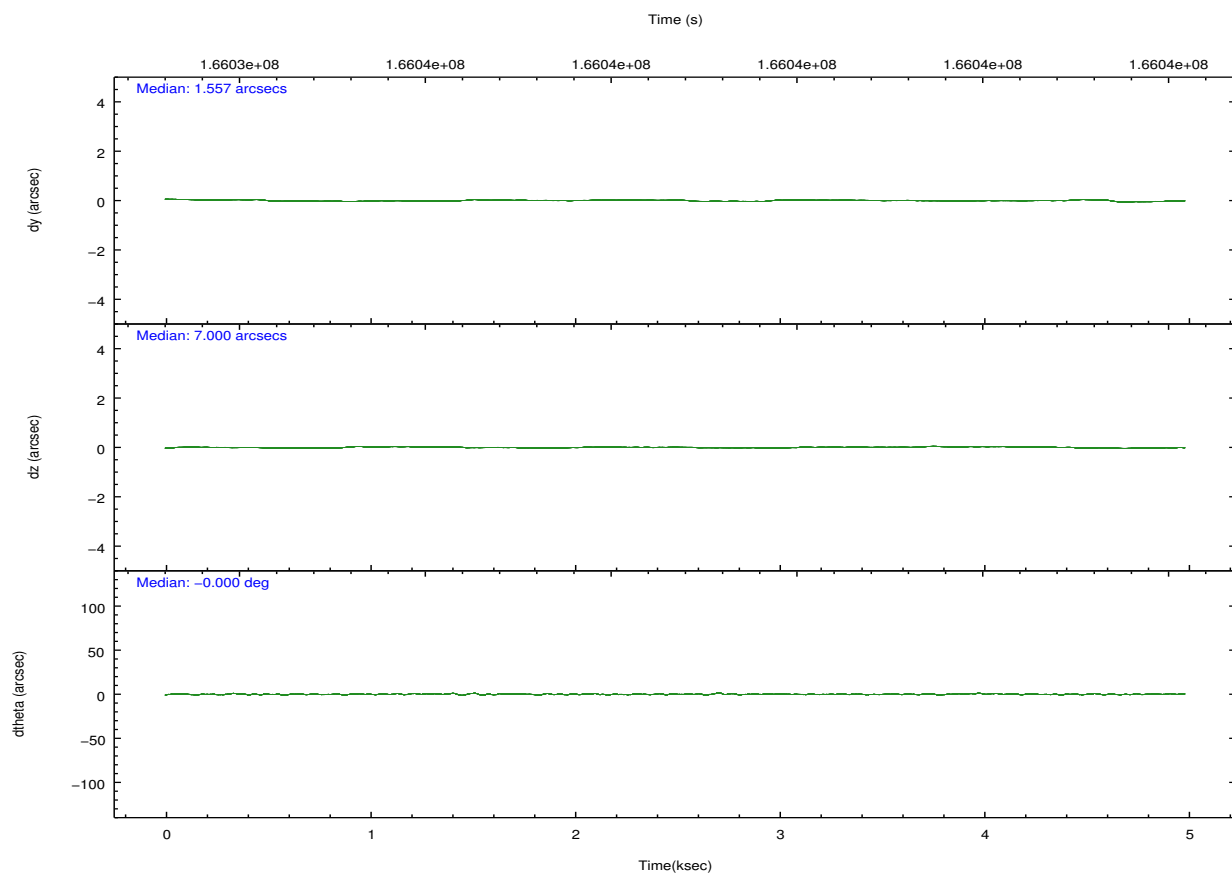
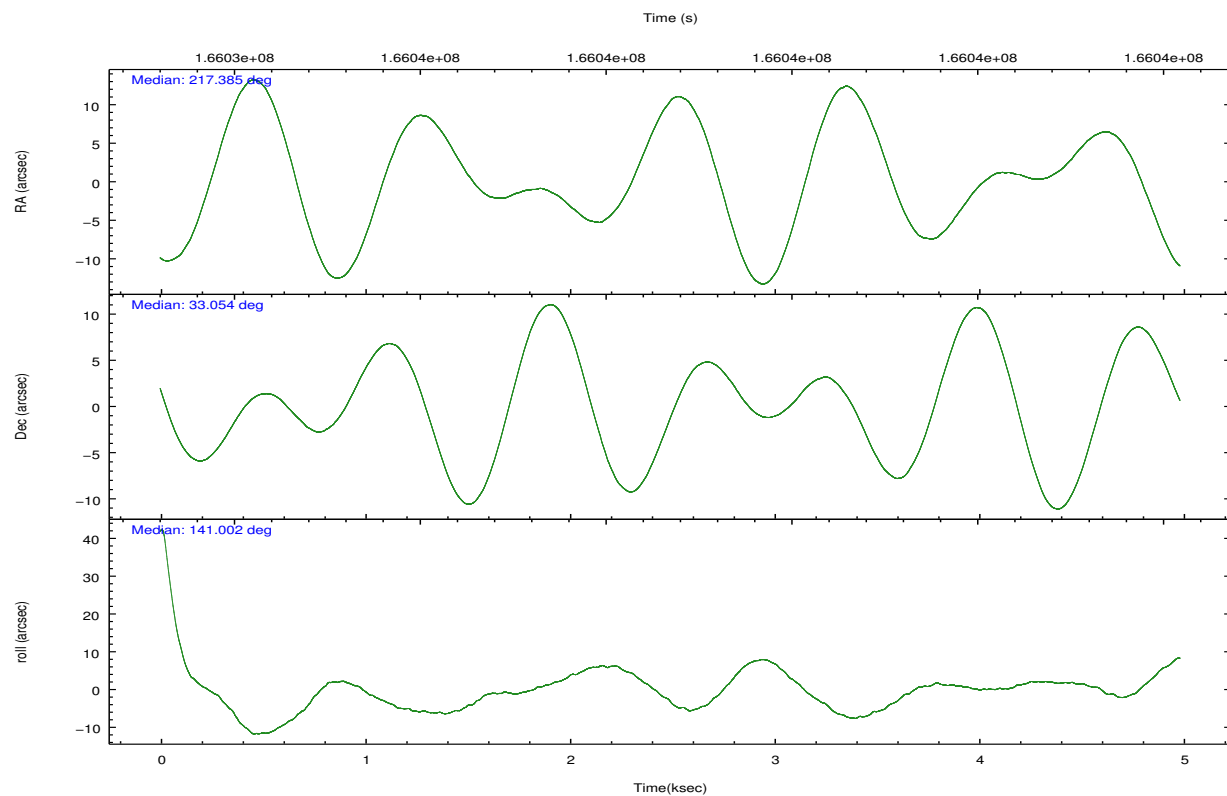
	ccd 0	ccd 1	ccd 2	ccd 3	ccd 6
grade 0 events	792	836	867	831	868
	3%	3%	3%	3%	3%
grade 1 events	13	6	12	9	11
	0%	0%	0%	0%	0%
grade 2 events	451	529	516	414	494
	2%	2%	2%	1%	2%
grade 3 events	285	286	237	274	245
	1%	1%	0%	1%	1%
grade 4 events	241	303	256	264	236
	1%	1%	1%	1%	1%
grade 5 events	656	797	587	781	770
	3%	3%	2%	3%	3%
grade 6 events	415	444	359	440	396
	1%	2%	1%	1%	1%
grade 7 events	18647	18425	22507	20029	18698
	86%	85%	88%	86%	86%

2.2 Compared Parameters

Parameter	Planned	Actual	Parameter	Planned	Actual
Instrument	ACIS	ACIS	Obspar format version number	7	7
Detector	ACIS-01236	ACIS-01236	Obspar file type	PREDICTED	ACTUAL
Grating	NONE	NONE	Obspar update status	NONE	UPDATED
Data mode	VFAINT	VFAINT	Number of optional ACIS chips dropped	0	0
Observation mode	POINTING	POINTING	On-chip summing requested	N	N
[deg] Pointing RA	217.416764	217.3844625577345	Subarray requested	NONE	NONE
[deg] Pointing Dec	33.049442	33.05357962039301	Alternating exposures requested	N	N
[deg] Pointing Roll	140.783814	141.0101128078036	[s] Primary exposure time	0.000000	3.1
[mm] SIM focus pos	-0.782348	-0.7809083437167272			
[mm] SIM defocus	0	0.001439871863259334			
[mm] SIM translation stage pos	-233.592463	-233.5874344608287			
[mm] SIM translation stage offset	0	-0.005018542100998502			
[s] Observation start time (MET)	166034035.184000	166033659.45207			
Observation start date	2003-04-06T16:32:51	2003-04-06T16:27:39			
[s] Observation end time (MET)	166038835.184000	166038969.4648			
Observation end date	2003-04-06T17:52:51	2003-04-06T17:56:09			
Read mode	TIMED	TIMED			

2.3 Aspect



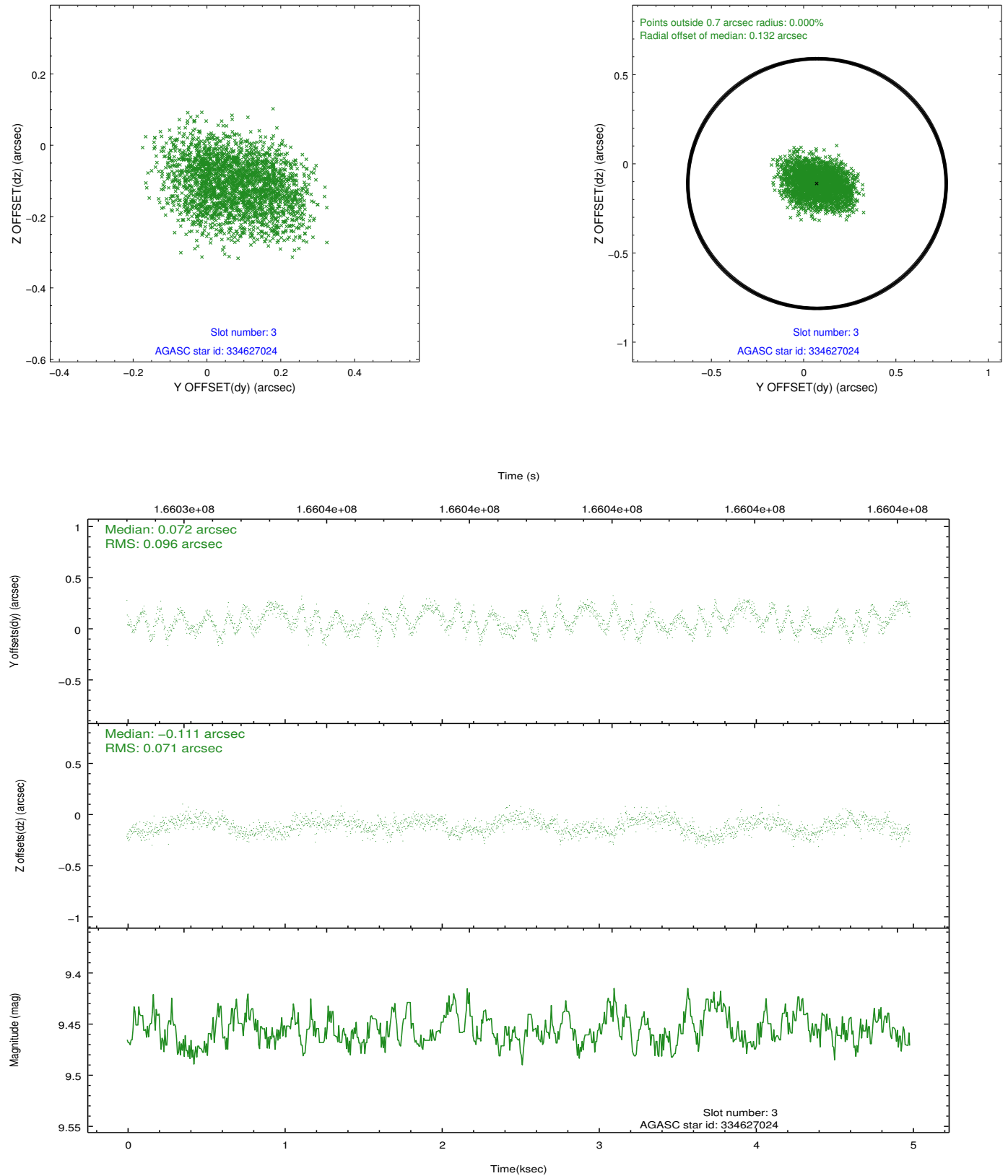


Slot Statistics

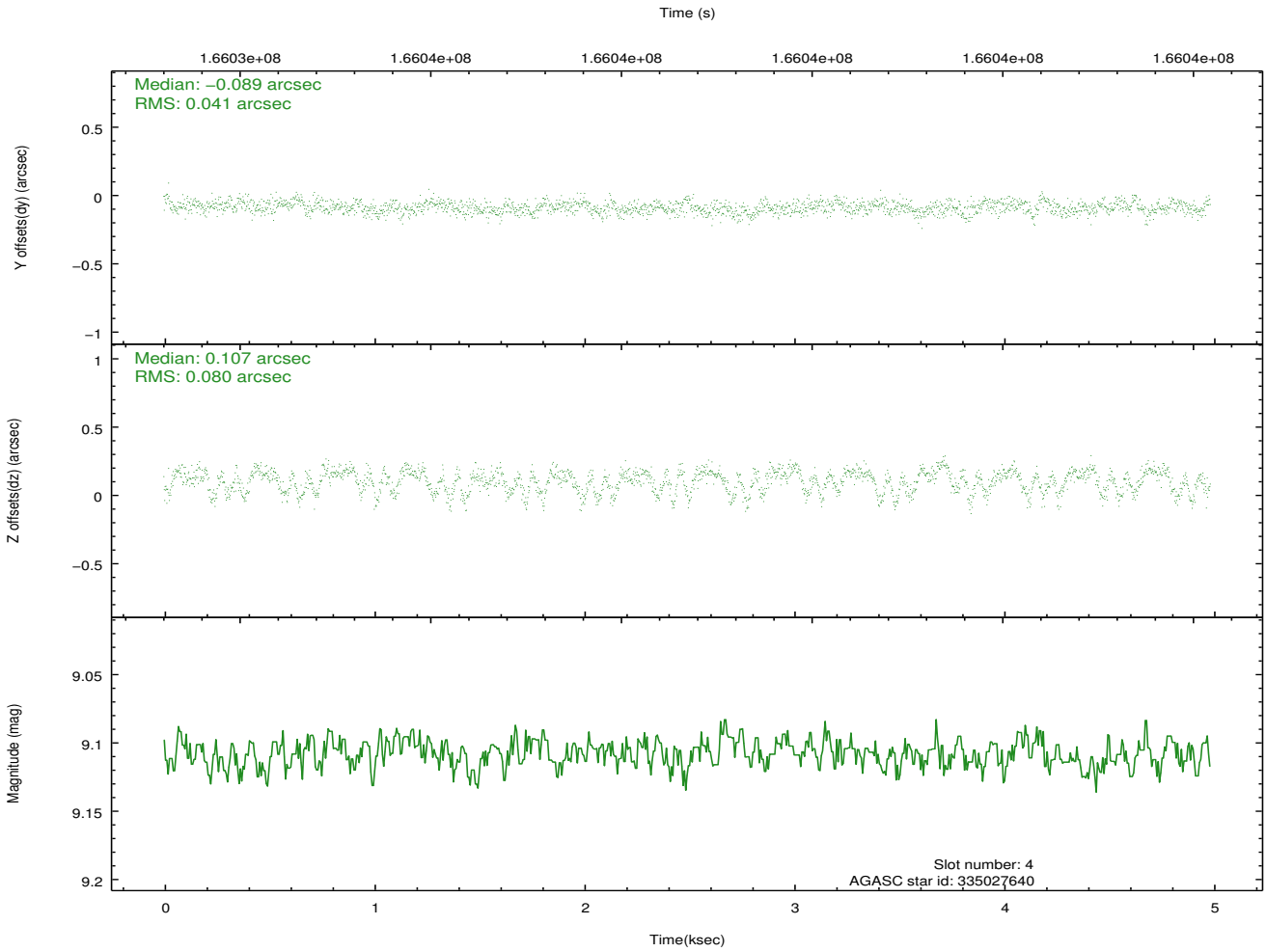
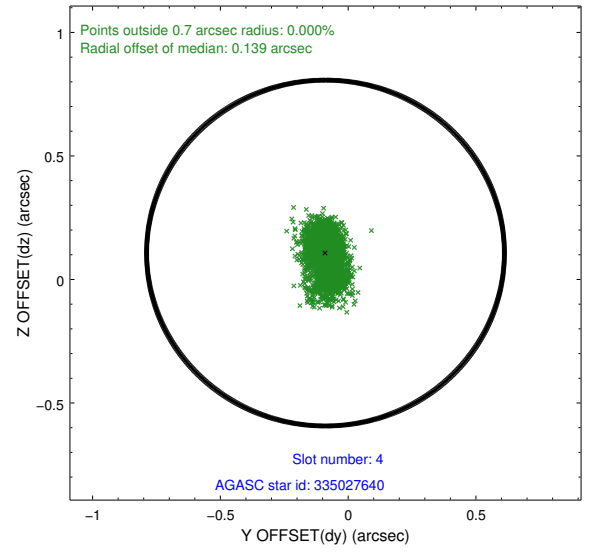
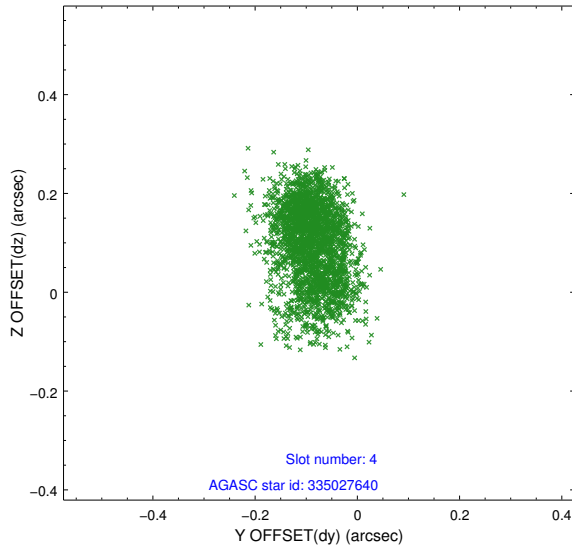
slot	status	id	mag	n_pts	med_dy	med_dz	dr1	dr2	ra	dec	mean_y	mean_z
0	FID	ACIS-I-1	7.25	1216	0.009	0.011	0.006	0.010	0.000000	0.000000	938.26	-830.40
1	FID	ACIS-I-5	7.24	1216	-0.079	0.053	0.006	0.011	0.000000	0.000000	-1809.20	1066.59
2	FID	ACIS-I-6	7.27	1216	-0.022	0.007	0.007	0.011	0.000000	0.000000	402.52	1712.37
3	GUIDE	334627024	9.46	2432	0.072	-0.111	0.129	0.199	217.318801	32.278221	-1524.48	2339.24
4	GUIDE	335027640	9.11	2433	-0.089	0.107	0.093	0.159	218.092211	33.193770	-1244.14	-1693.22
5	GUIDE	335028696	9.18	2433	0.063	0.150	0.111	0.192	217.260519	33.844112	2171.04	-1921.59
6	GUIDE	335029808	9.07	2433	-0.091	-0.043	0.081	0.131	216.789548	33.180488	1766.97	824.45
7	GUIDE	335022112	9.22	2431	0.038	-0.093	0.101	0.157	216.659296	32.794758	1202.07	2153.85

2.4 Star Slots

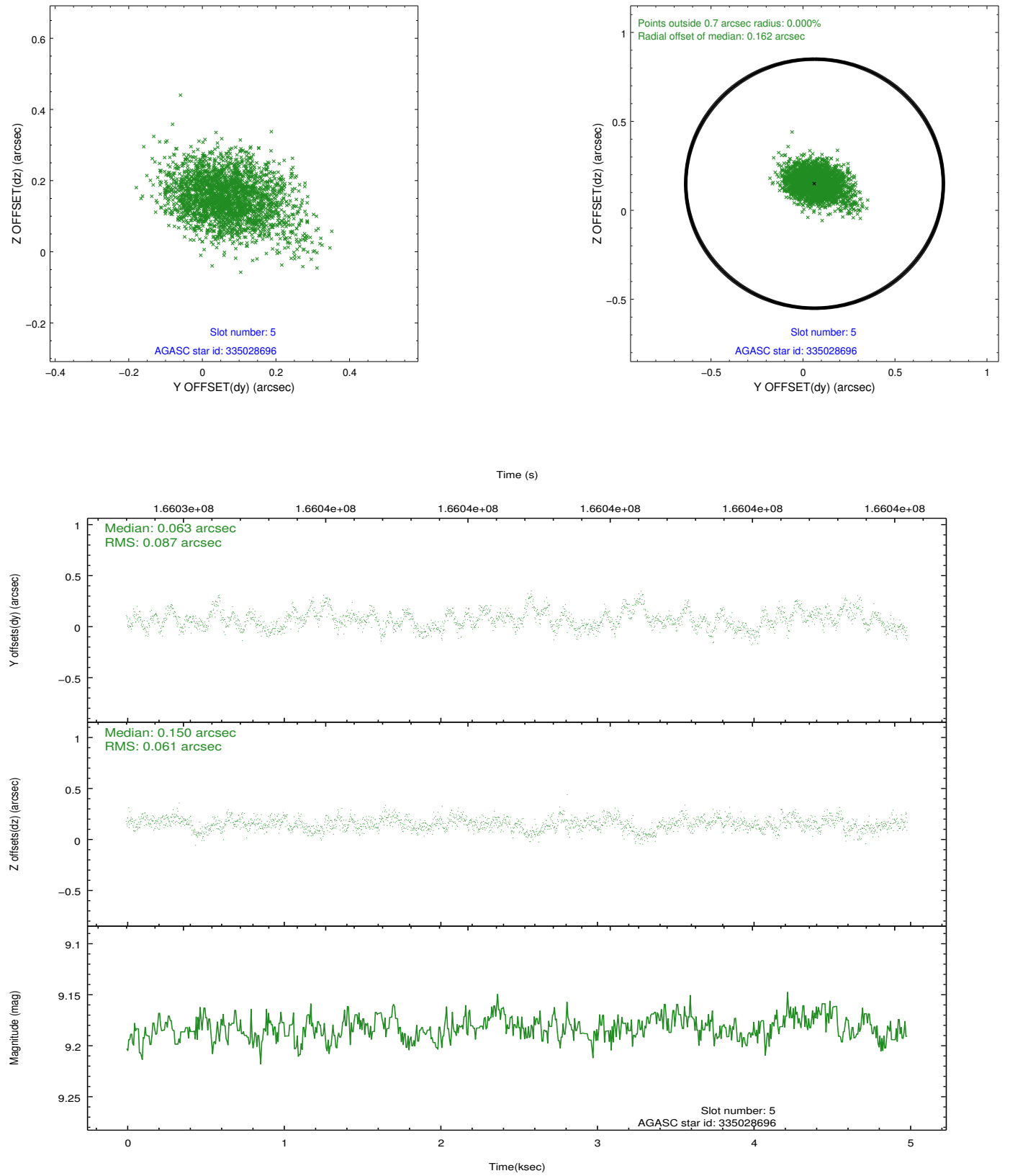
2.4.1 Slot 3



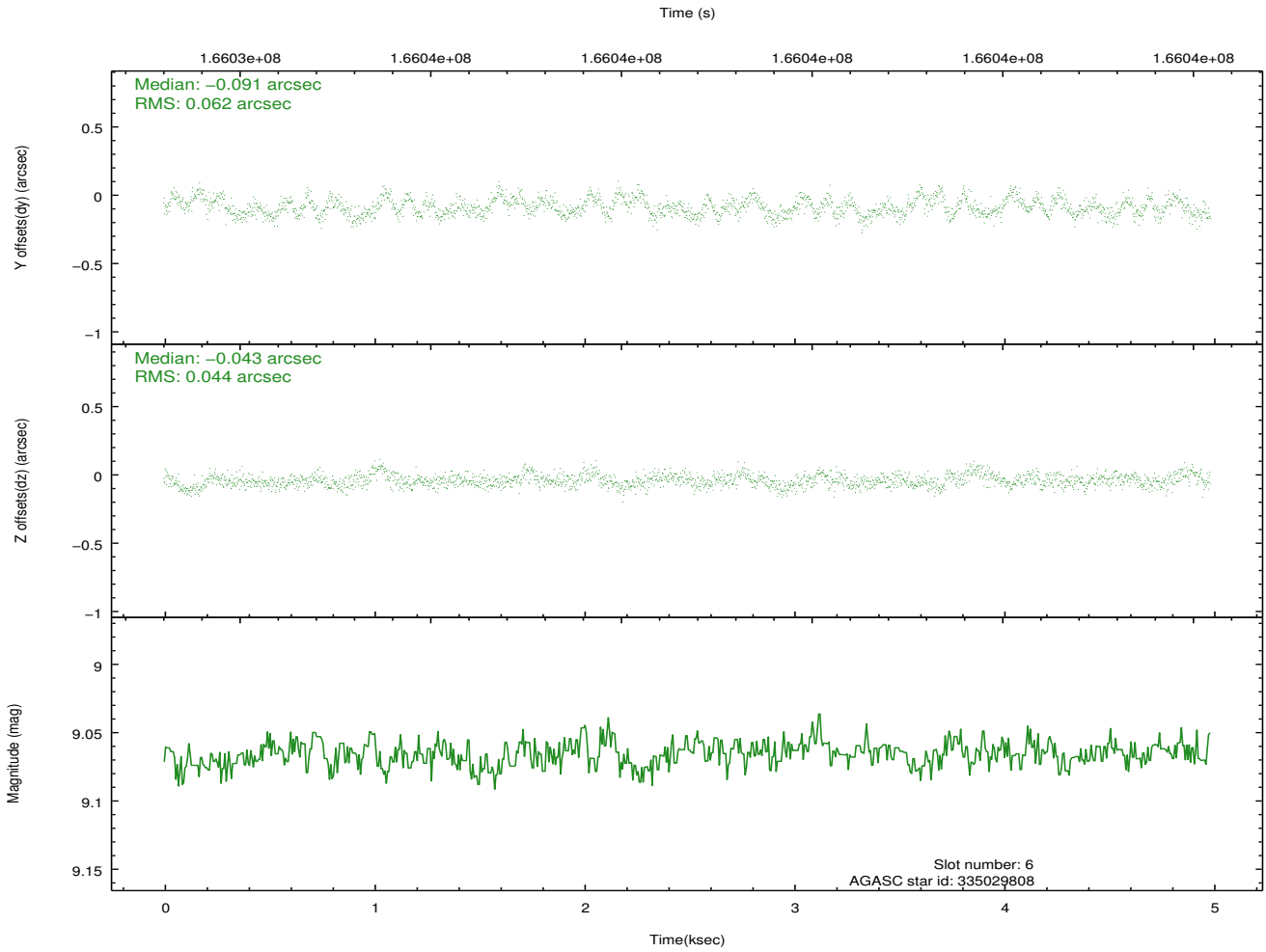
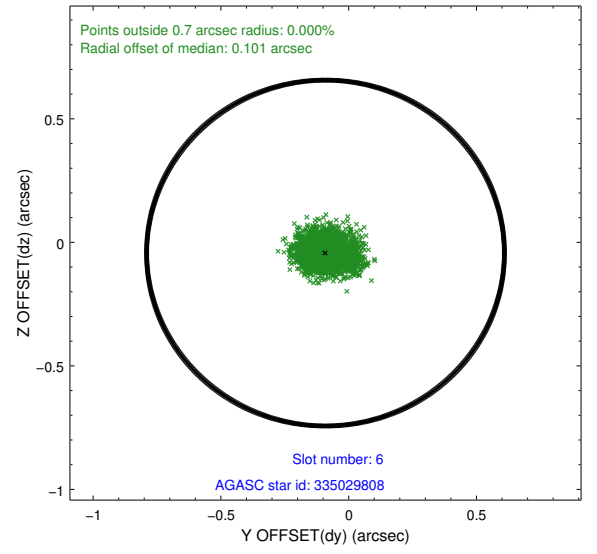
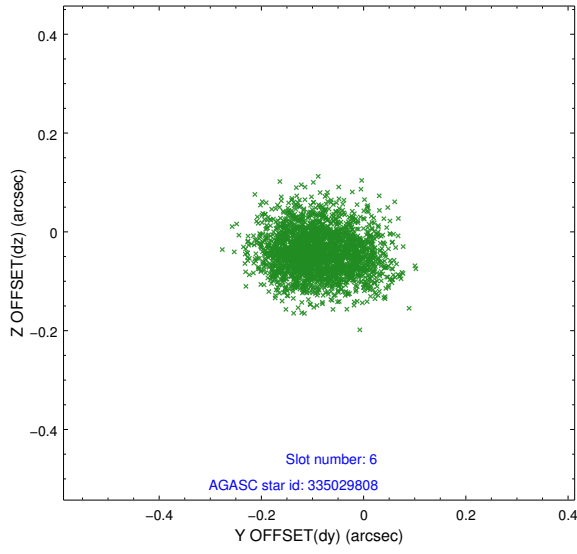
2.4.2 Slot 4



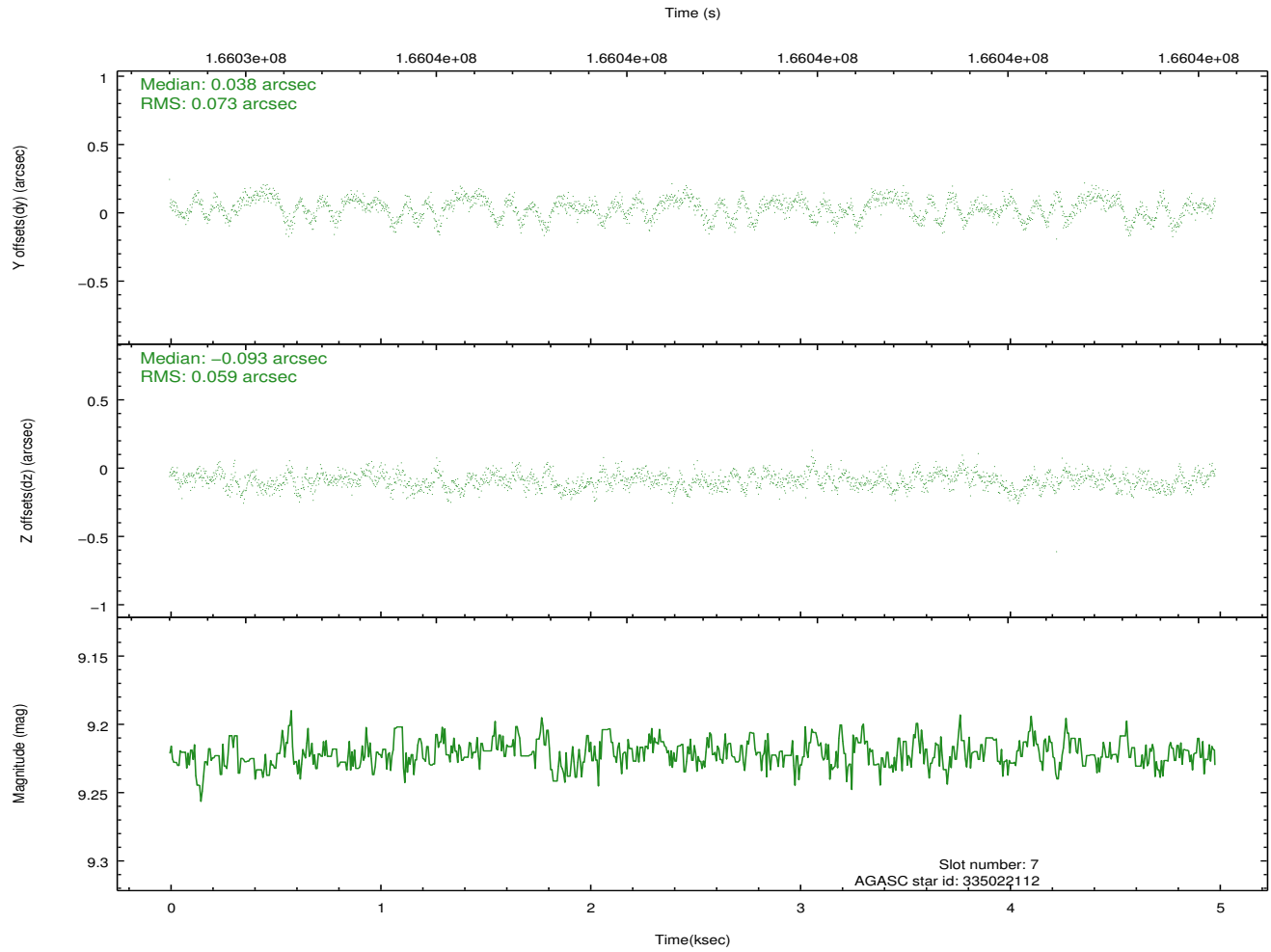
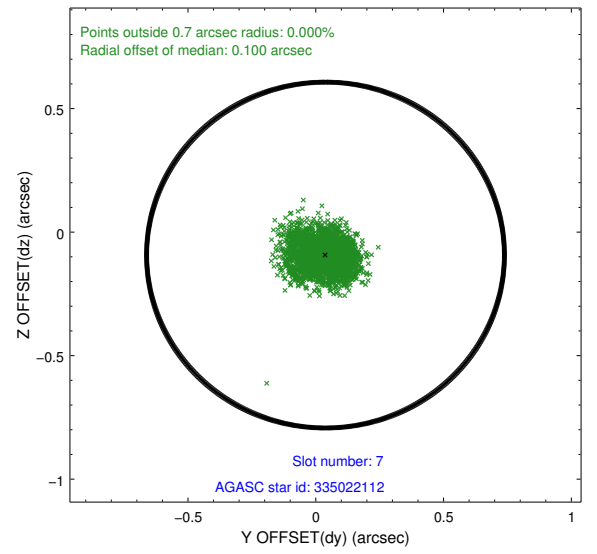
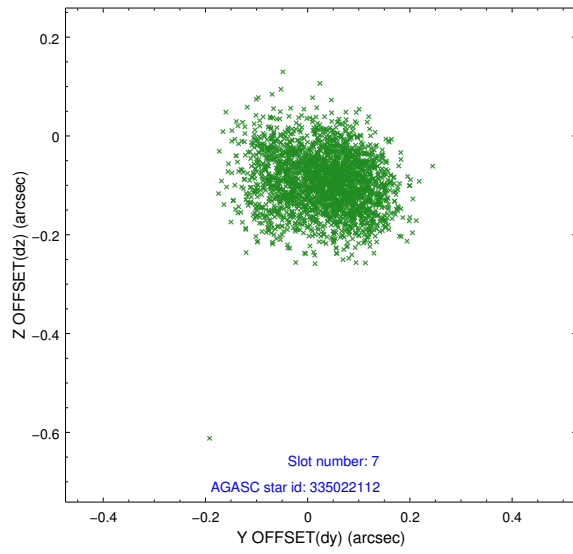
2.4.3 Slot 5



2.4.4 Slot 6

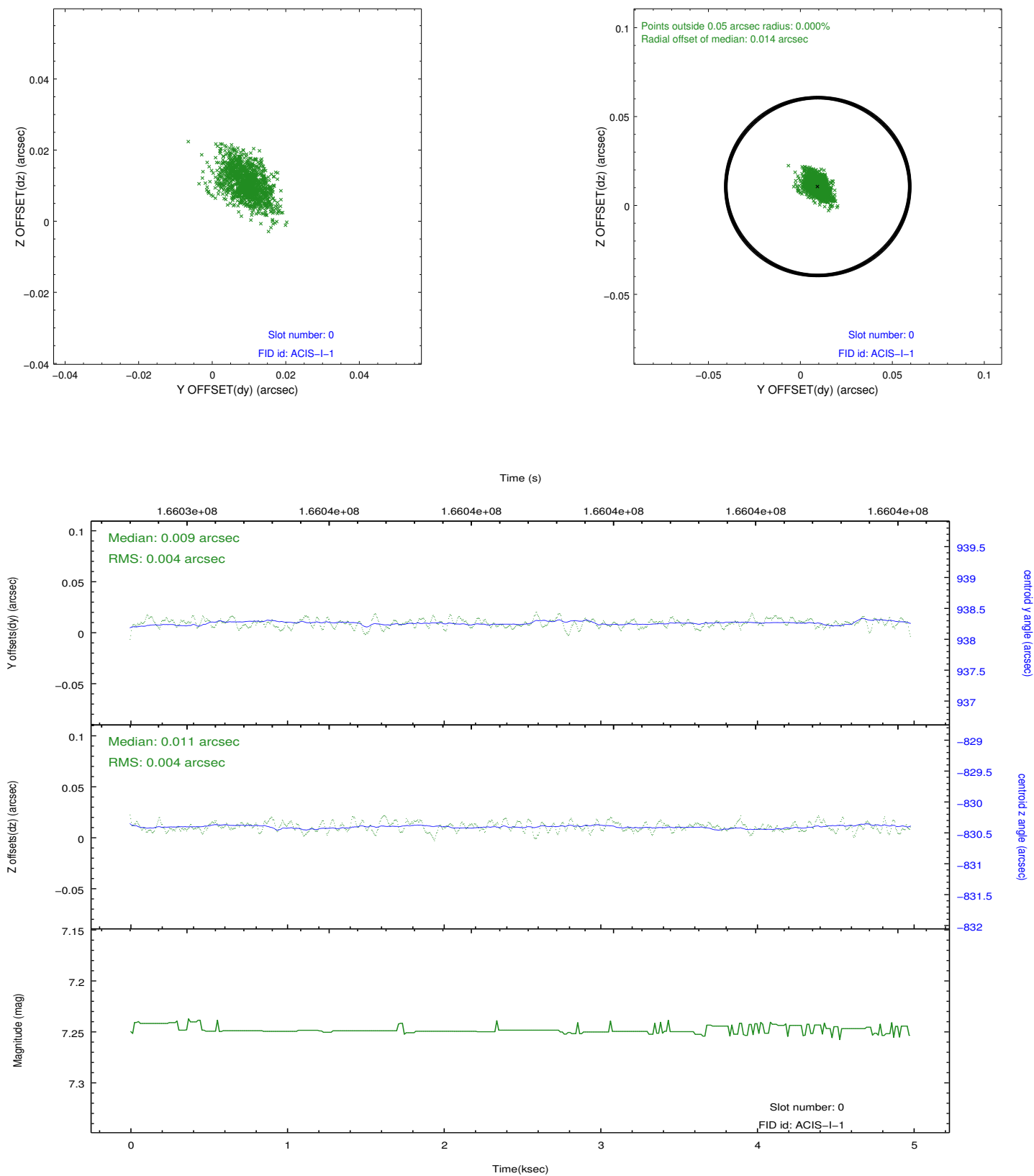


2.4.5 Slot 7

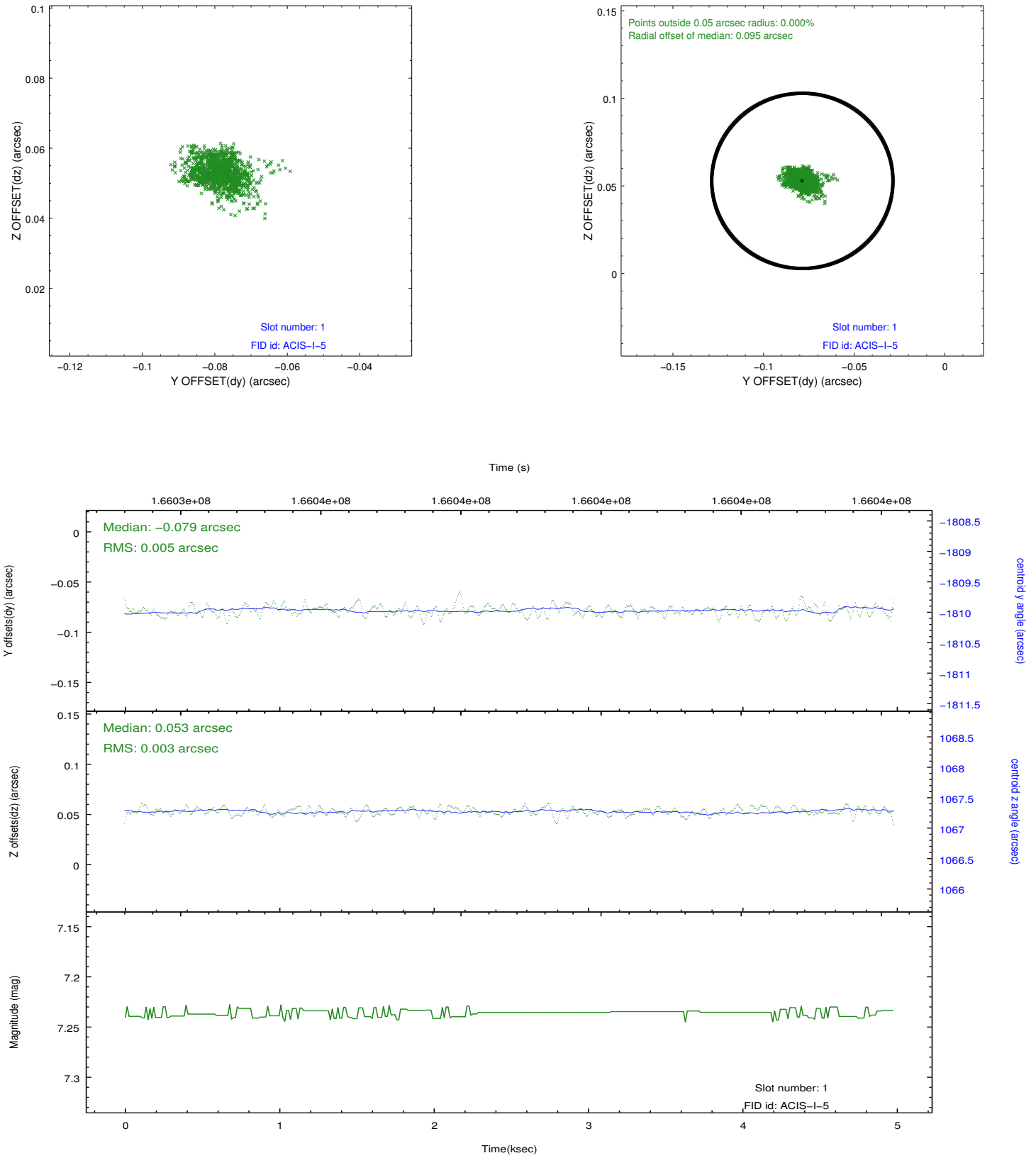


2.5 FID Slots

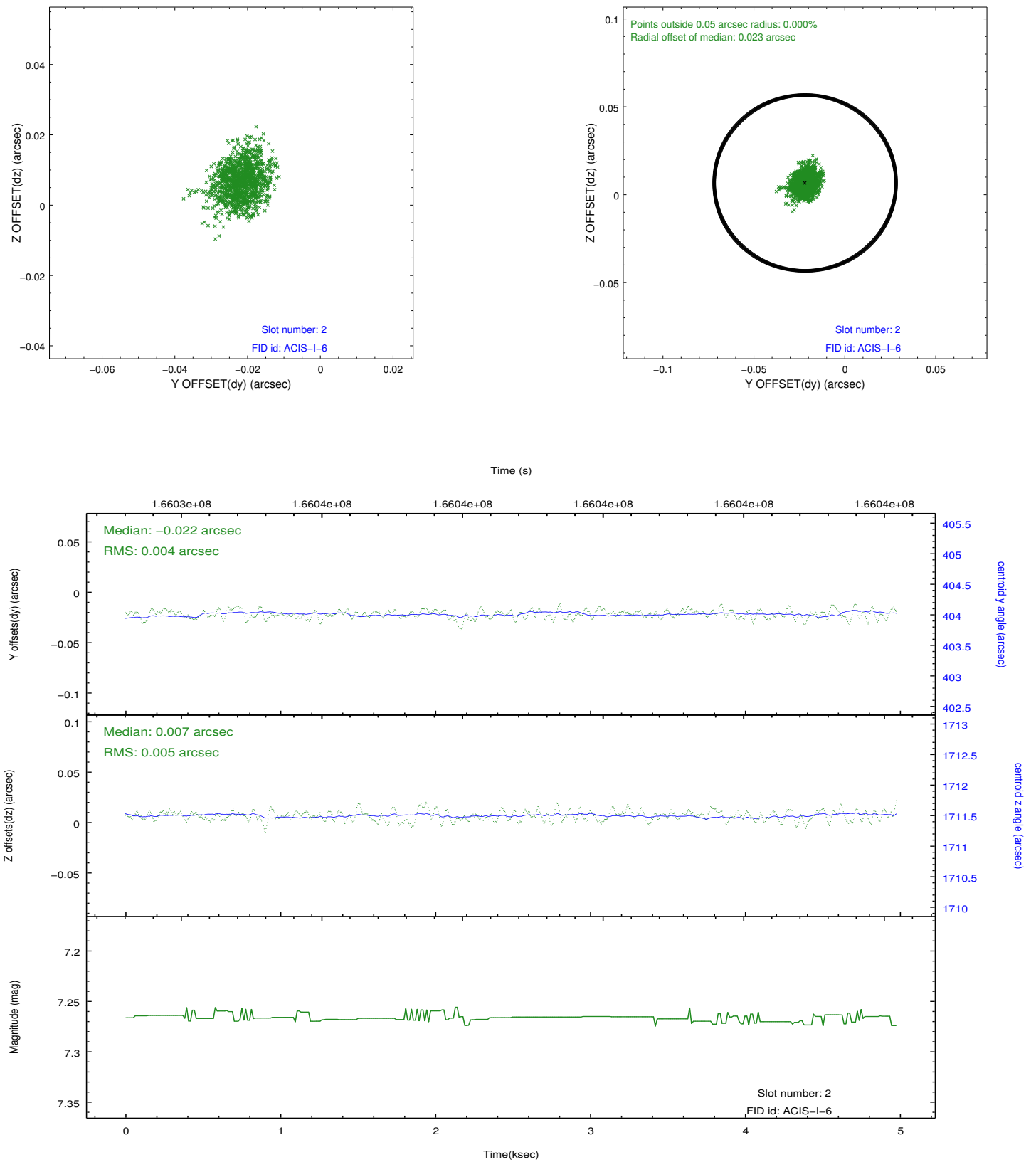
2.5.1 Slot 0



2.5.2 Slot 1



2.5.3 Slot 2



A Summary

A.1 Status

V&V Scientist	Beth Sundheim
V&V Date (YYYY-MM-DD)	2012.11.13
V&V Edition	1
V&V Disposition and Status	OK
V&V Charge Time	4.569

A.2 Comments