

# V&V Reference Report

## L2 ASCDS Version : 7.6.8

Observation 4099 - L2 Version 001  
Chandra X-Ray Center

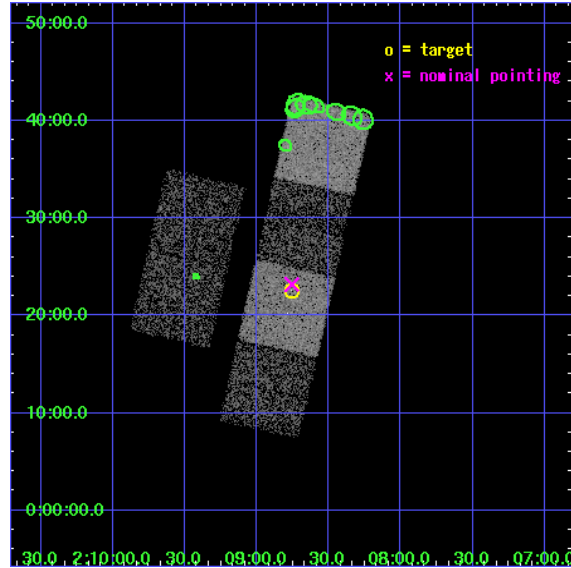
L2 Processing Date : Jul 7 2006

## Contents

<b>1</b>	<b>Front</b>	<b>2</b>
<b>2</b>	<b>OBI</b>	<b>3</b>
2.1	OBI . . . . .	3
2.1.1	Images . . . . .	3
2.1.2	Bias . . . . .	3
2.1.3	Parameters . . . . .	4
2.1.4	Events . . . . .	4
2.2	Compared Parameters . . . . .	5
2.3	Aspect . . . . .	6
2.4	Star Slots . . . . .	9
2.4.1	Slot 3 . . . . .	9
2.4.2	Slot 4 . . . . .	10
2.4.3	Slot 5 . . . . .	11
2.4.4	Slot 6 . . . . .	12
2.4.5	Slot 7 . . . . .	13
2.5	FID Slots . . . . .	14
2.5.1	Slot 0 . . . . .	14
2.5.2	Slot 1 . . . . .	15
2.5.3	Slot 2 . . . . .	16
<b>3</b>	<b>Point Sources</b>	<b>17</b>
<b>A</b>	<b>Summary</b>	<b>18</b>
A.1	Status . . . . .	18
A.2	Comments . . . . .	18

# 1 Front

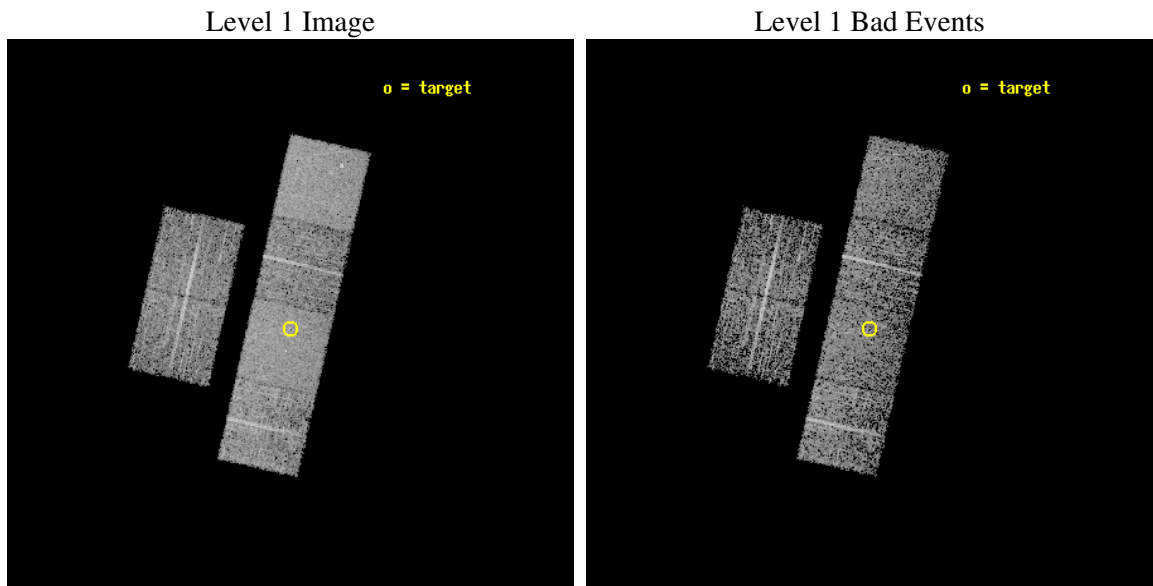
seq_num	700778
obs_id	4099
title	X-RAY CONSTRAINTS ON THE STRUCTURE OF THE BROAD EMISSION LINE REGION IN QUASARS
observer	Gordon Richards
object	SDSS J020845.53+002236.0
dtcycle	0
cycle	P
ra_targ	32.189583
dec_targ	0.376667
ra_nom	32.189069569338
dec_nom	0.38640017725406
roll_nom	102.83775547466
revision	2
ontime	3590.3999866247
livetime	3544.9361801148
ontime2	3590.3999866247
ontime3	3590.3999866247
ontime5	3590.3999866247
ontime6	3590.3999866247
ontime7	3590.3999866247
ontime8	3590.3999866247
l2events	40851



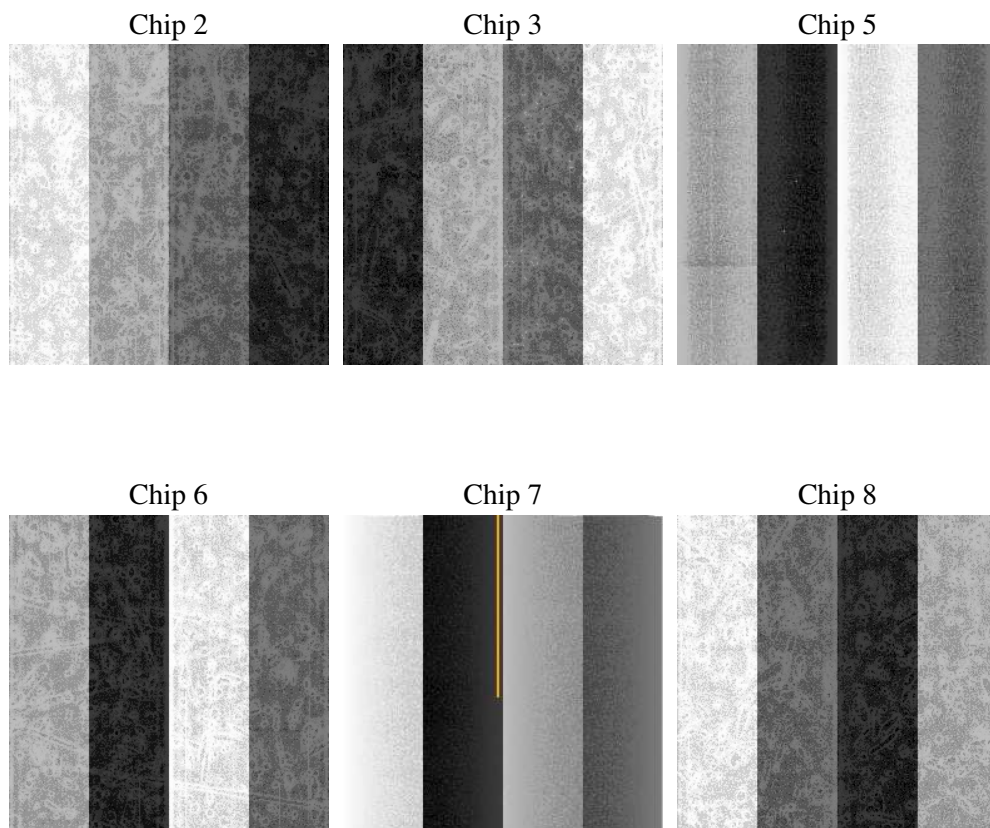
## 2 OBI

### 2.1 OBI

#### 2.1.1 Images



#### 2.1.2 Bias



### 2.1.3 Parameters

obi_num	0
ascdsver	7.6.8
caldsver	3.2.2
date	2006-07-07T13:44:32
revision	2

sched_exp_time	3453.000000
ontime	4329.9833953679
ontime2	4329.9833953679
ontime3	4329.9833953679
ontime5	4329.9833953679
ontime6	4329.9833953679
ontime7	4329.9833953679
ontime8	4329.9833953679
l1events	207241

### 2.1.4 Events

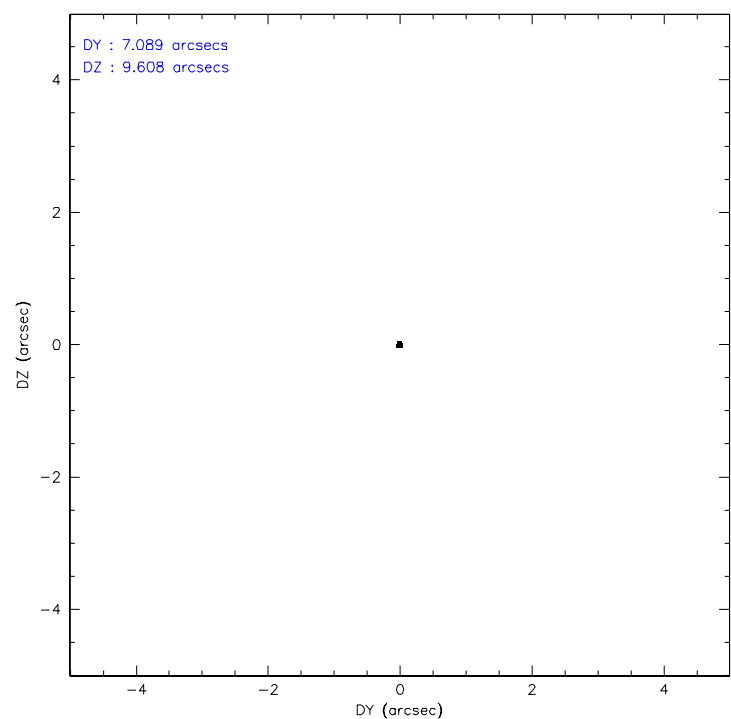
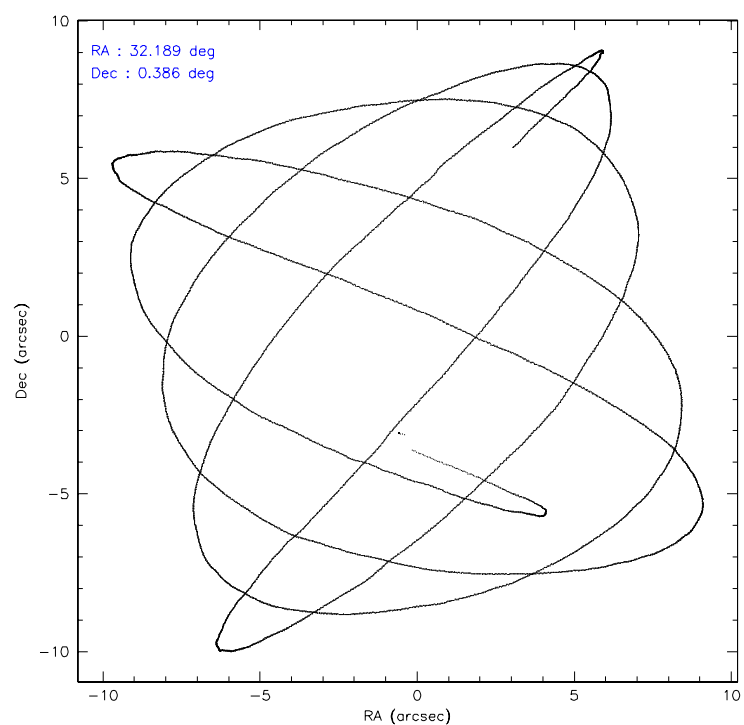
	ccd 2	ccd 3	ccd 5	ccd 6	ccd 7	ccd 8
level 1 events	27421	28505	43770	29510	41183	36852
rejected events	24148	25131	27826	25958	27790	30440
rejected %	88%	88%	63%	87%	67%	82%

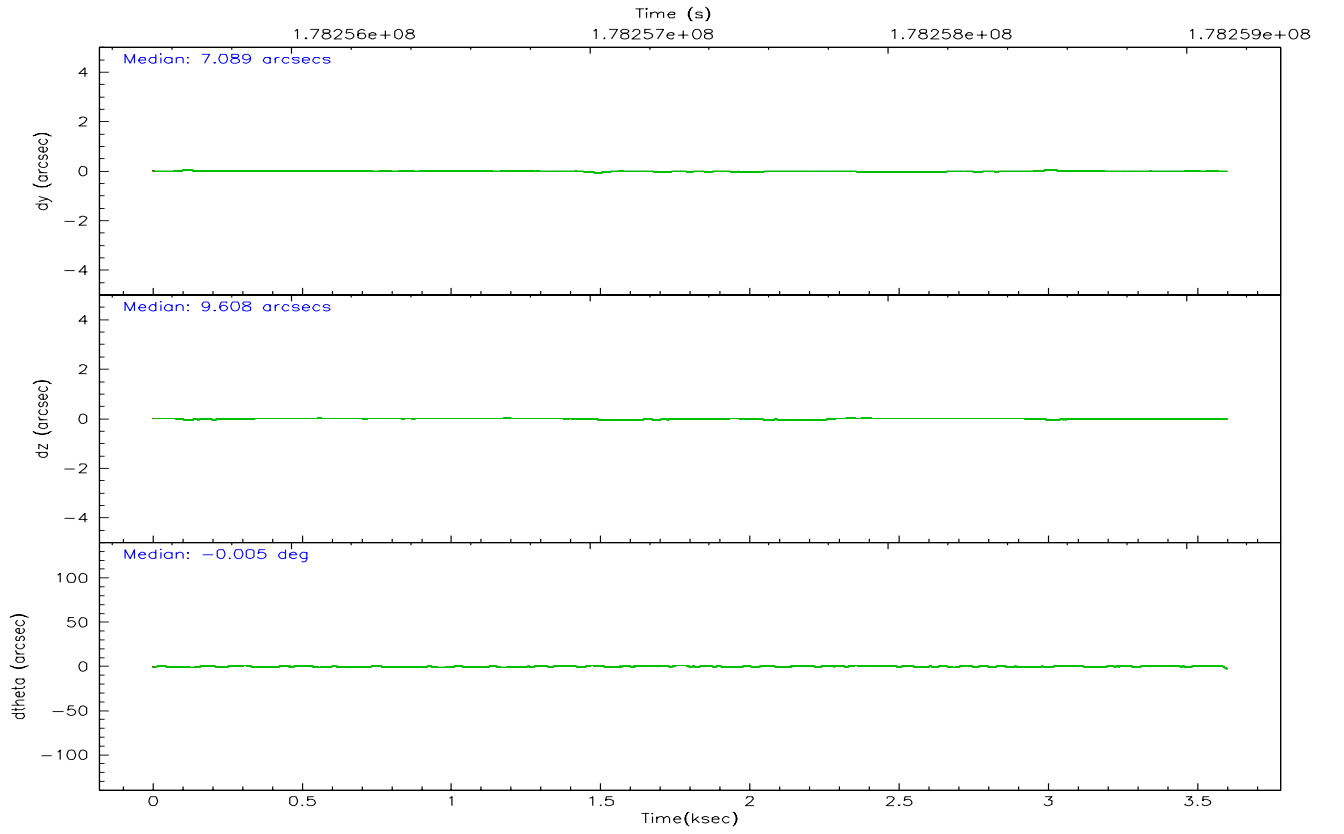
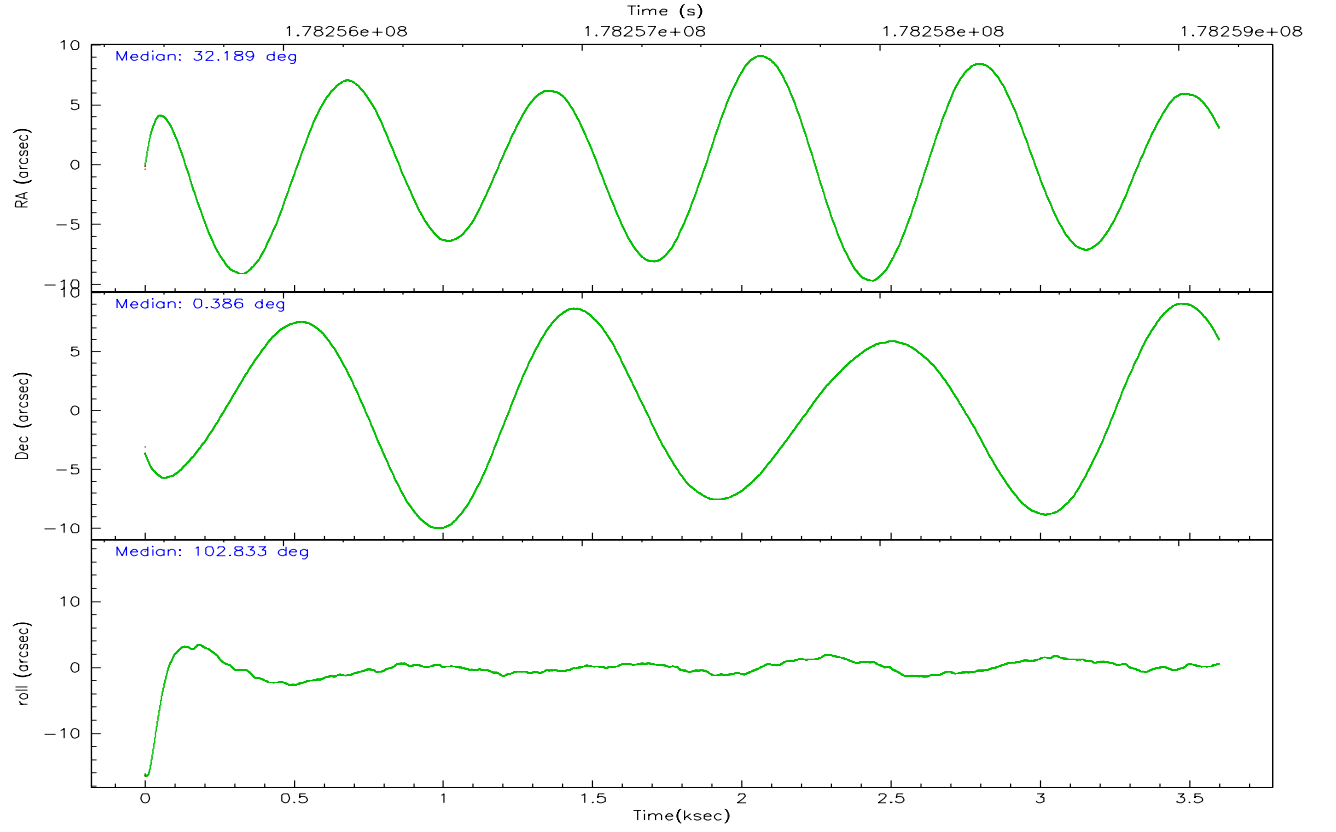
	ccd 2	ccd 3	ccd 5	ccd 6	ccd 7	ccd 8
grade 0 events	2265	2340	1627	2241	1252	3253
	8%	8%	3%	7%	3%	8%
grade 1 events	18	23	60	18	27	39
	0%	0%	0%	0%	0%	0%
grade 2 events	703	781	6358	844	4216	1712
	2%	2%	14%	2%	10%	4%
grade 3 events	355	360	493	381	881	783
	1%	1%	1%	1%	2%	2%
grade 4 events	325	348	486	359	888	748
	1%	1%	1%	1%	2%	2%
grade 5 events	1100	1168	1938	1278	2421	1602
	4%	4%	4%	4%	5%	4%
grade 6 events	621	639	11705	851	10237	1938
	2%	2%	26%	2%	24%	5%
grade 7 events	22034	22846	21103	23538	21261	26777
	80%	80%	48%	79%	51%	72%

## 2.2 Compared Parameters

Parameter	Planned	Actual	Parameter	Planned	Actual
Instrument	ACIS	ACIS	Obspar format version number	6	6
Detector	ACIS-235678	ACIS-235678	Obspar file type	PREDICTED	ACTUAL
Grating	NONE	NONE	Obspar update status	NONE	UPDATED
Data mode	FAINT	FAINT	On-chip summing requested	N	N
Observation mode	POINTING	POINTING	Subarray requested	NONE	NONE
Pointing RA	32.207905	32.1890695693377	Alternating exposures requested	N	N
Pointing Dec	0.366610	0.3864001772540561	Primary exposure time	0.000000	3.2
Pointing Roll	102.681066	102.8377554746629			
SIM focus pos (mm)	-0.684267	-0.6828225247311905			
SIM defocus (mm)	0	0.001444936568705701			
SIM translation stage pos (mm)	-190.132523	-190.1400660498719			
SIM translation stage offset (mm)	0	0.00754346686406393			
Observation start time	178255683.184000	178254265.52128			
Observation start date	2003-08-26T03:26:59	2003-08-26T03:04:25			
Observation end time	178259136.184000	178259317.234			
Observation end date	2003-08-26T04:24:32	2003-08-26T04:28:37			
Read mode	TIMED	TIMED			

## 2.3 Aspect





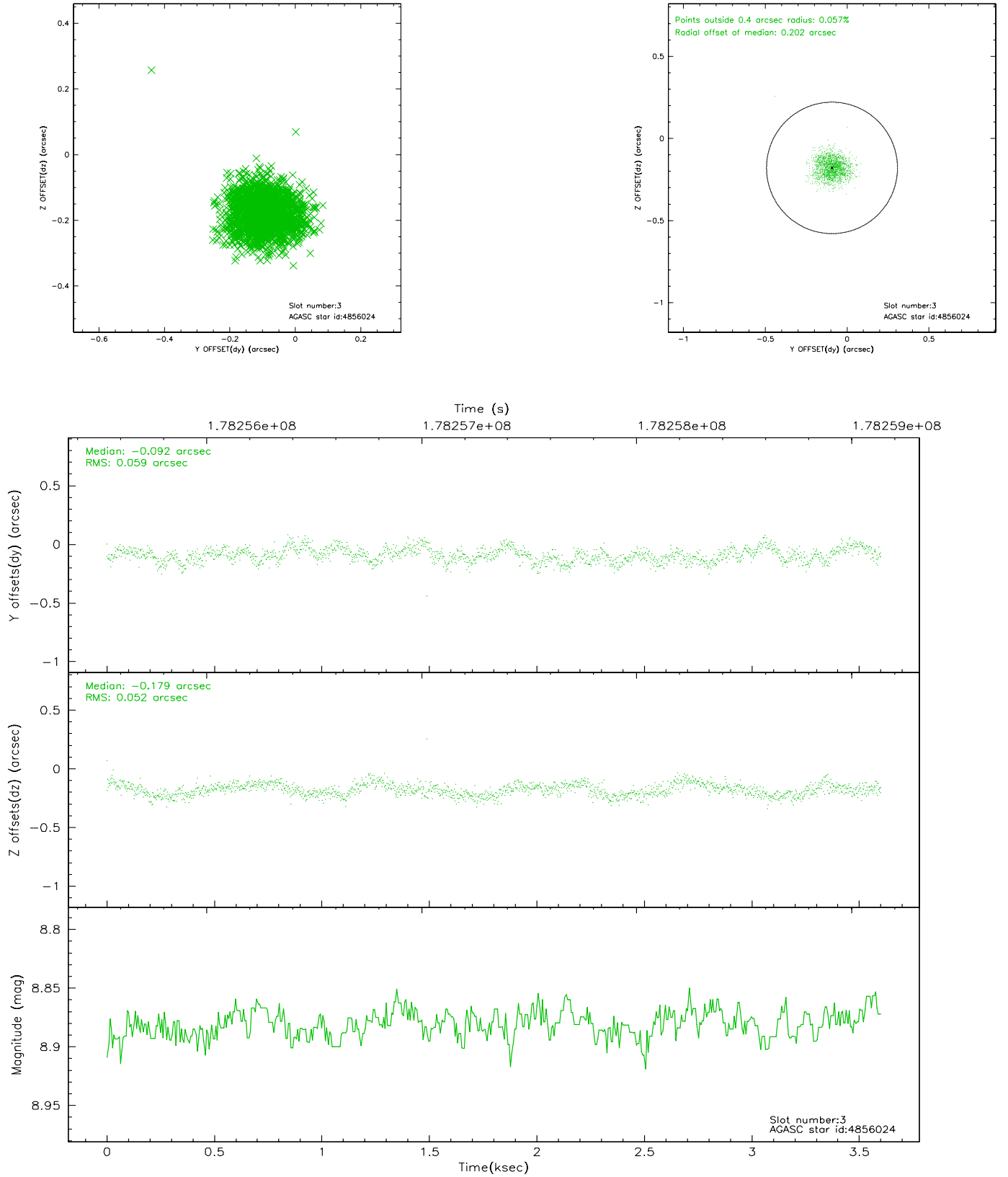
### Slot Statistics

slot	status	id	mag	n_pts	med_dy	med_dz	dr1	dr2	ra	dec	mean_y	mean_z
0	FID	ACIS-S-2	7.10	879	-0.018	0.011	0.005	0.009	0.000000	0.000000	-759.83	-1730.84
1	FID	ACIS-S-4	7.20	879	0.020	0.014	0.005	0.009	0.000000	0.000000	2152.66	175.88
2	FID	ACIS-S-6	7.34	879	-0.030	-0.018	0.006	0.011	0.000000	0.000000	404.35	815.21
3	GUIDE	4856024	8.88	1757	-0.092	-0.179	0.084	0.131	31.452405	0.826076	2210.58	2289.79
4	GUIDE	4857864	8.53	1757	-0.145	0.095	0.058	0.096	32.433296	0.797044	1334.82	-1130.12
5	GUIDE	4981944	8.07	1757	0.007	0.005	0.060	0.098	32.552714	0.494378	177.09	-1312.50
6	GUIDE	614728296	8.48	1757	0.201	-0.040	0.065	0.100	32.601360	-0.092275	-1922.52	-1020.01
7	GUIDE	4984112	8.04	1756	0.027	0.122	0.070	0.104	32.933733	0.223546	-1076.97	-2436.66

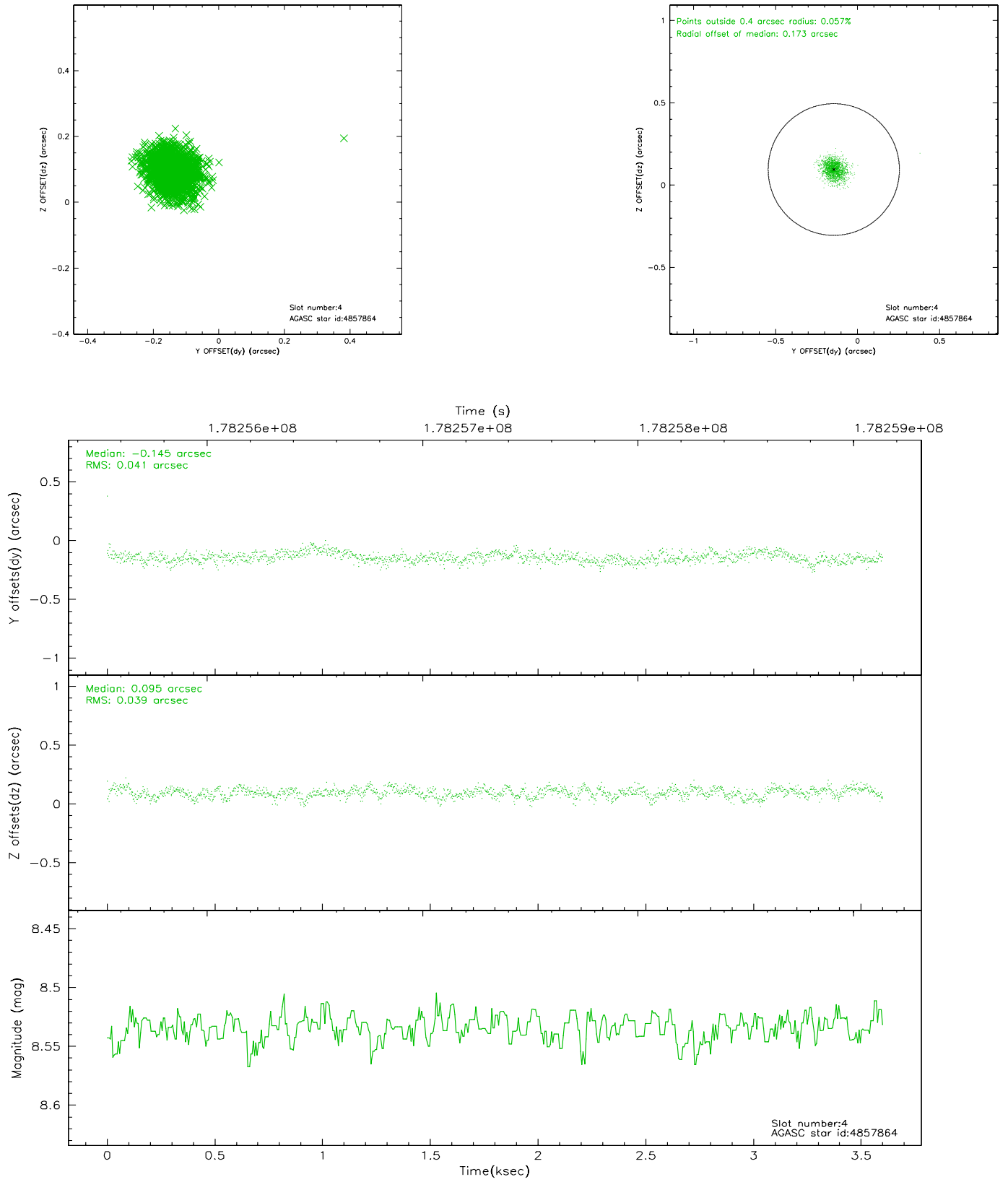


## 2.4 Star Slots

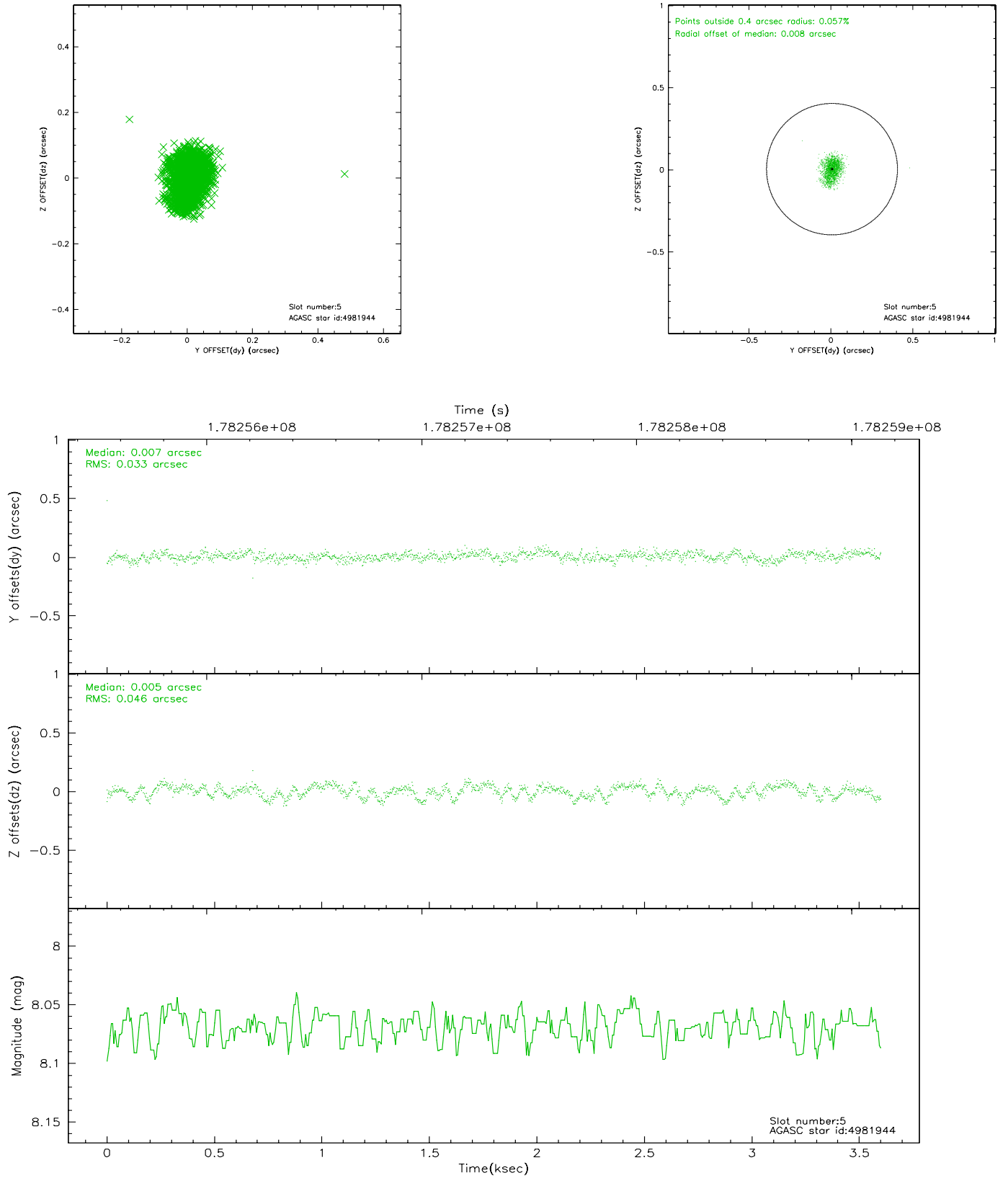
### 2.4.1 Slot 3



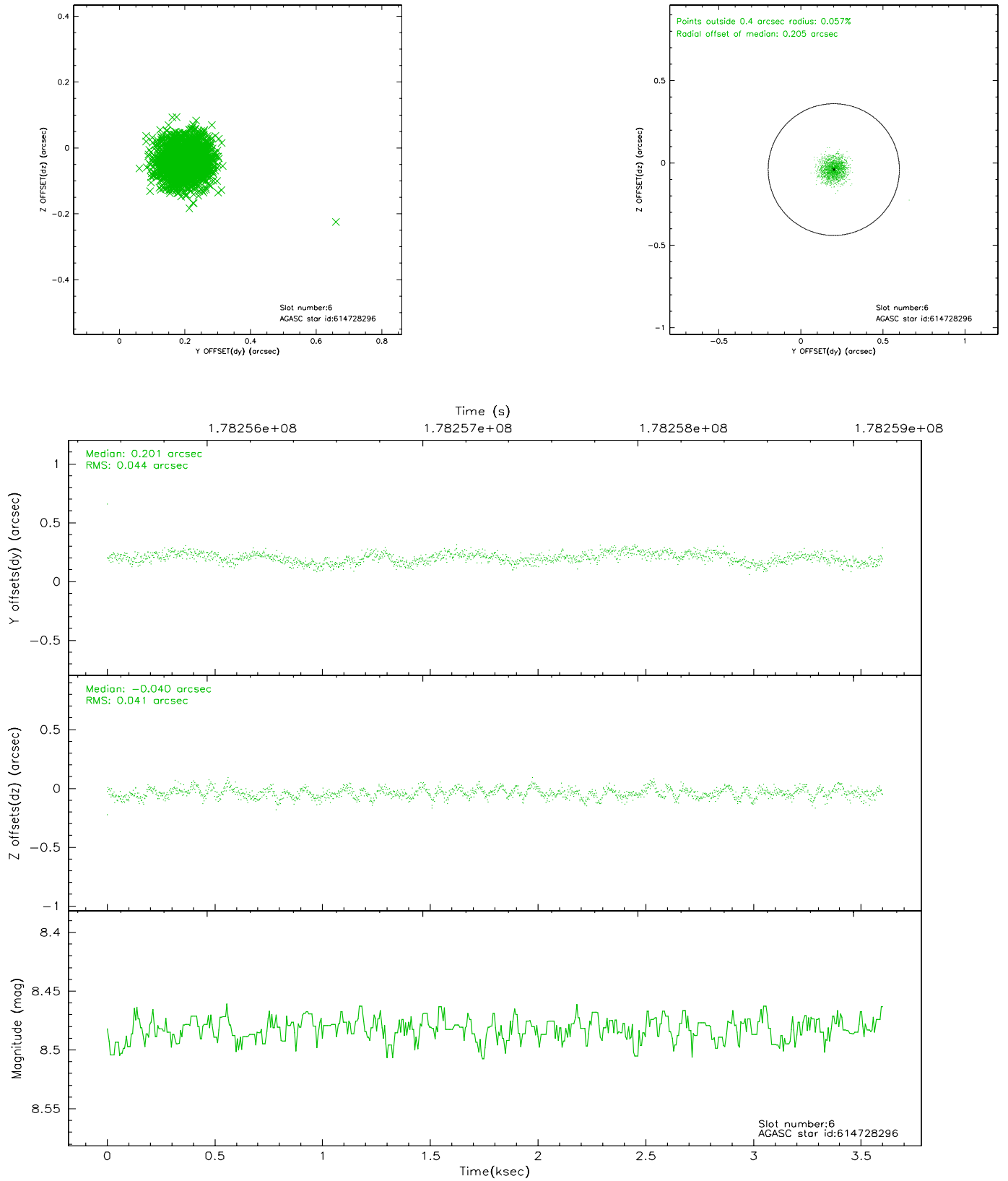
## 2.4.2 Slot 4



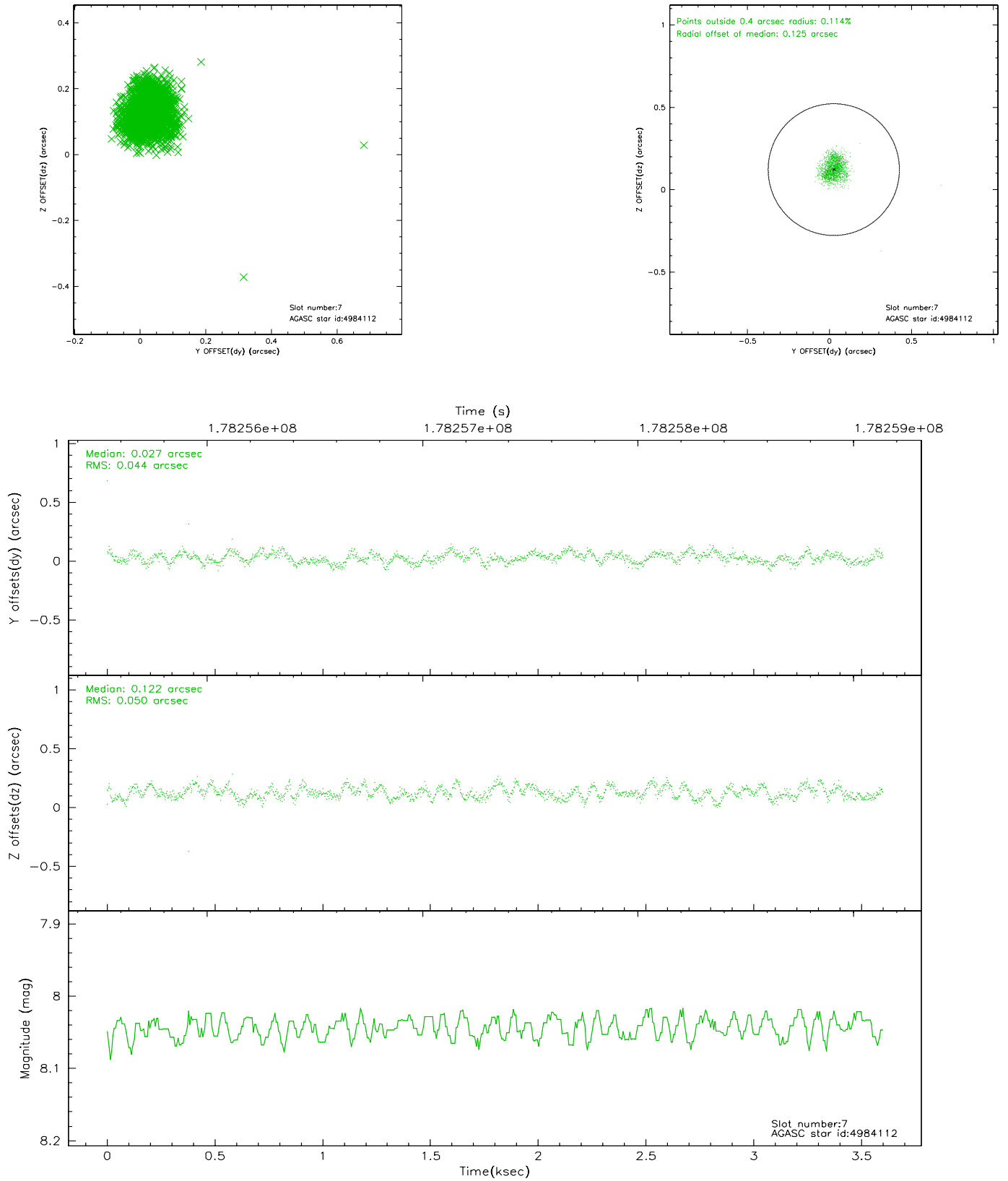
### 2.4.3 Slot 5



## 2.4.4 Slot 6

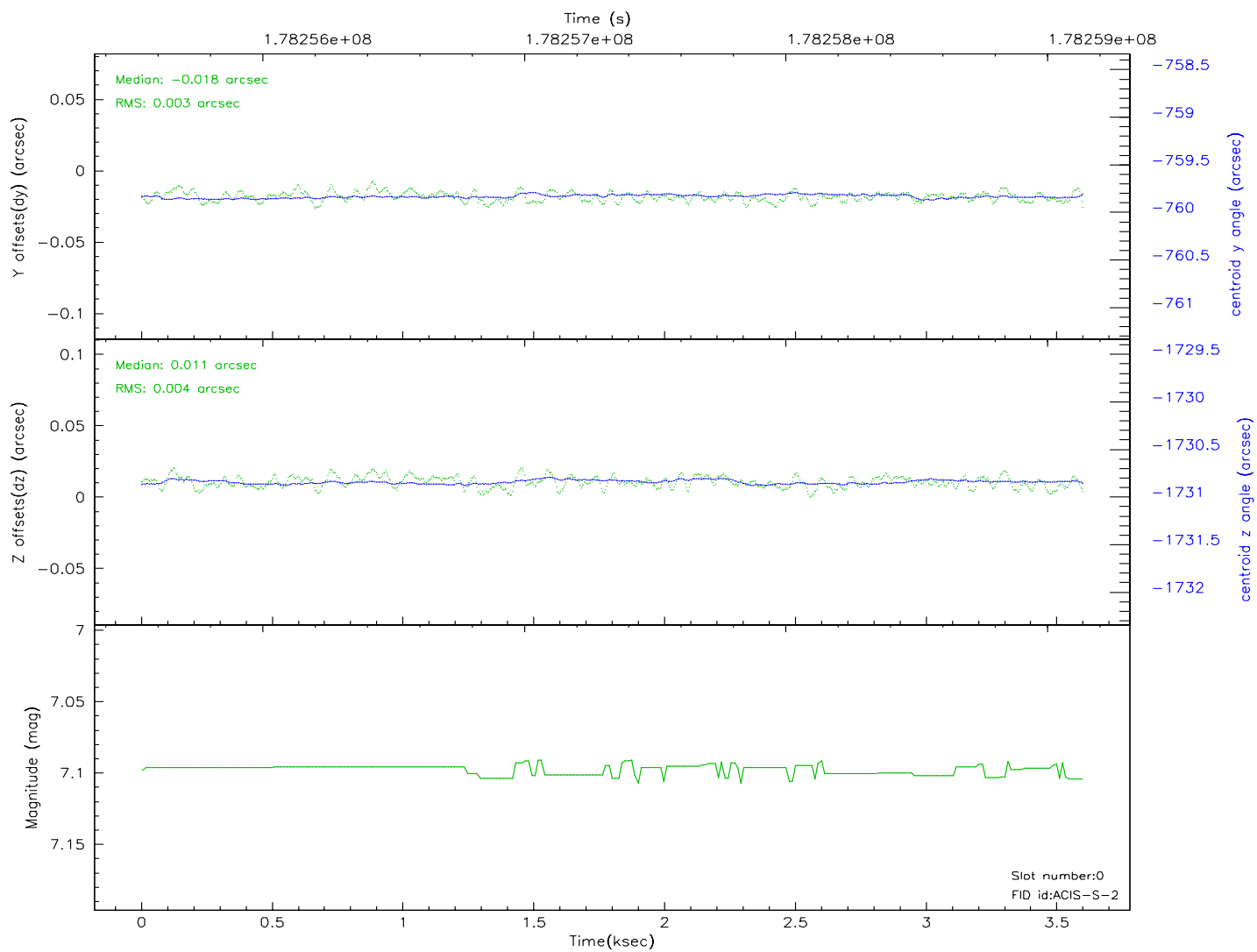
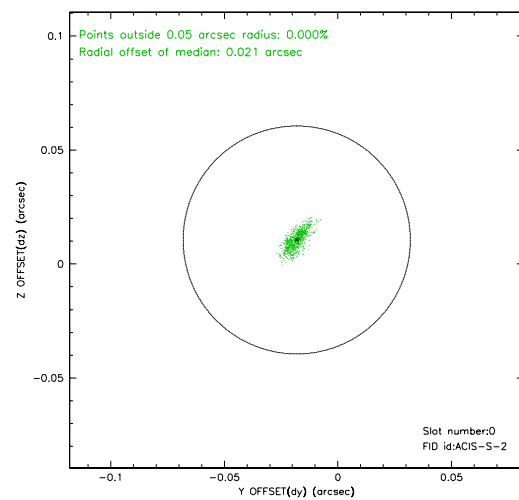
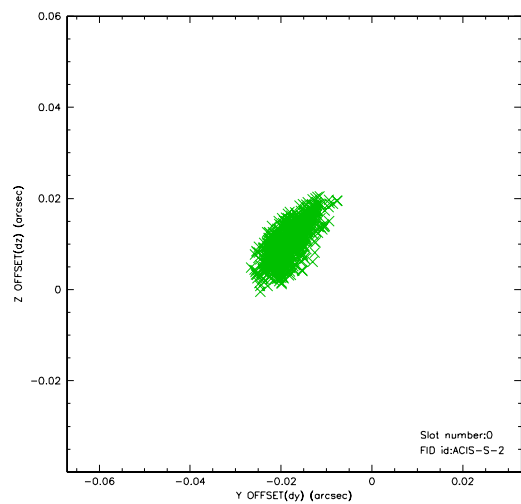


## 2.4.5 Slot 7

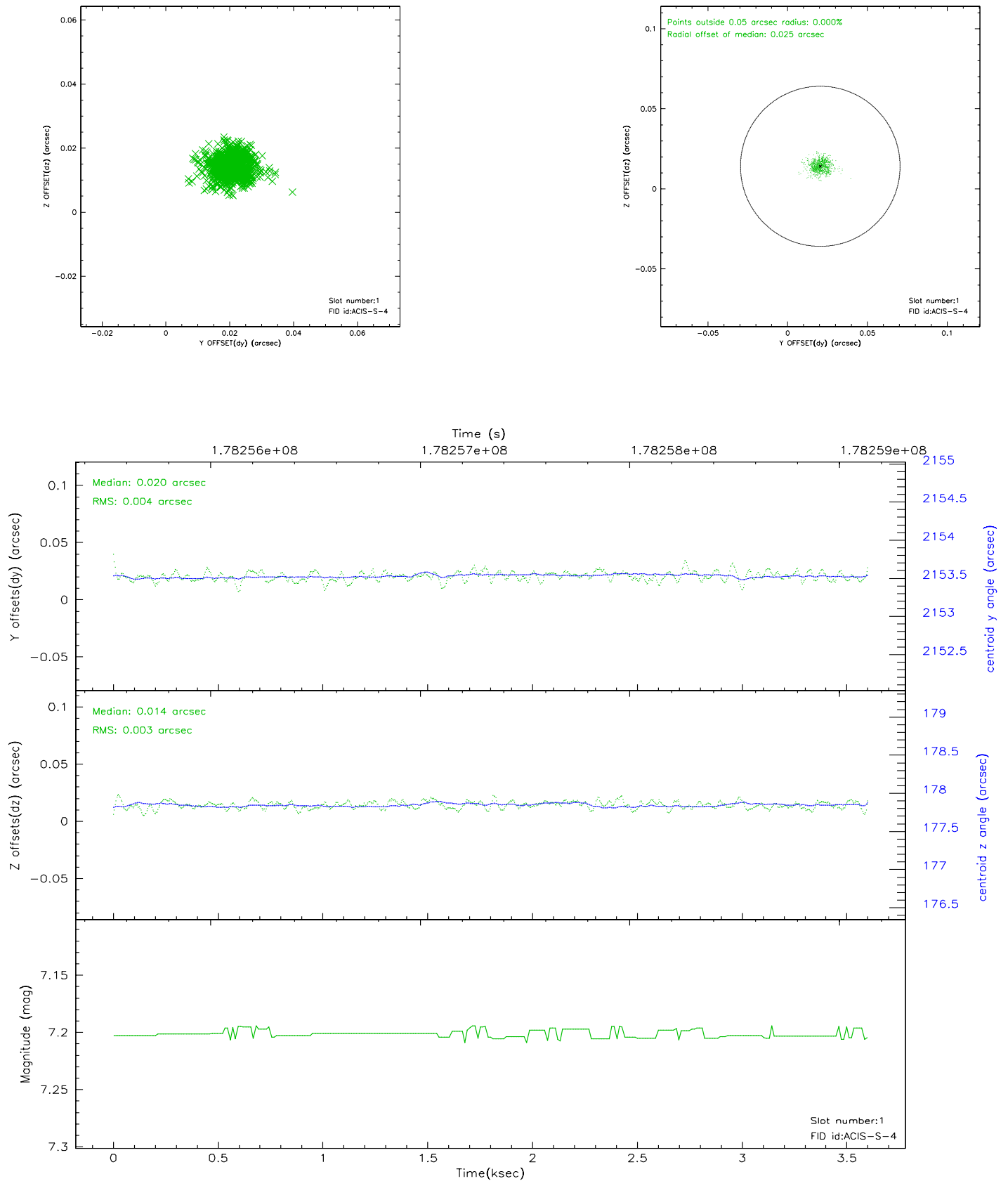


## 2.5 FID Slots

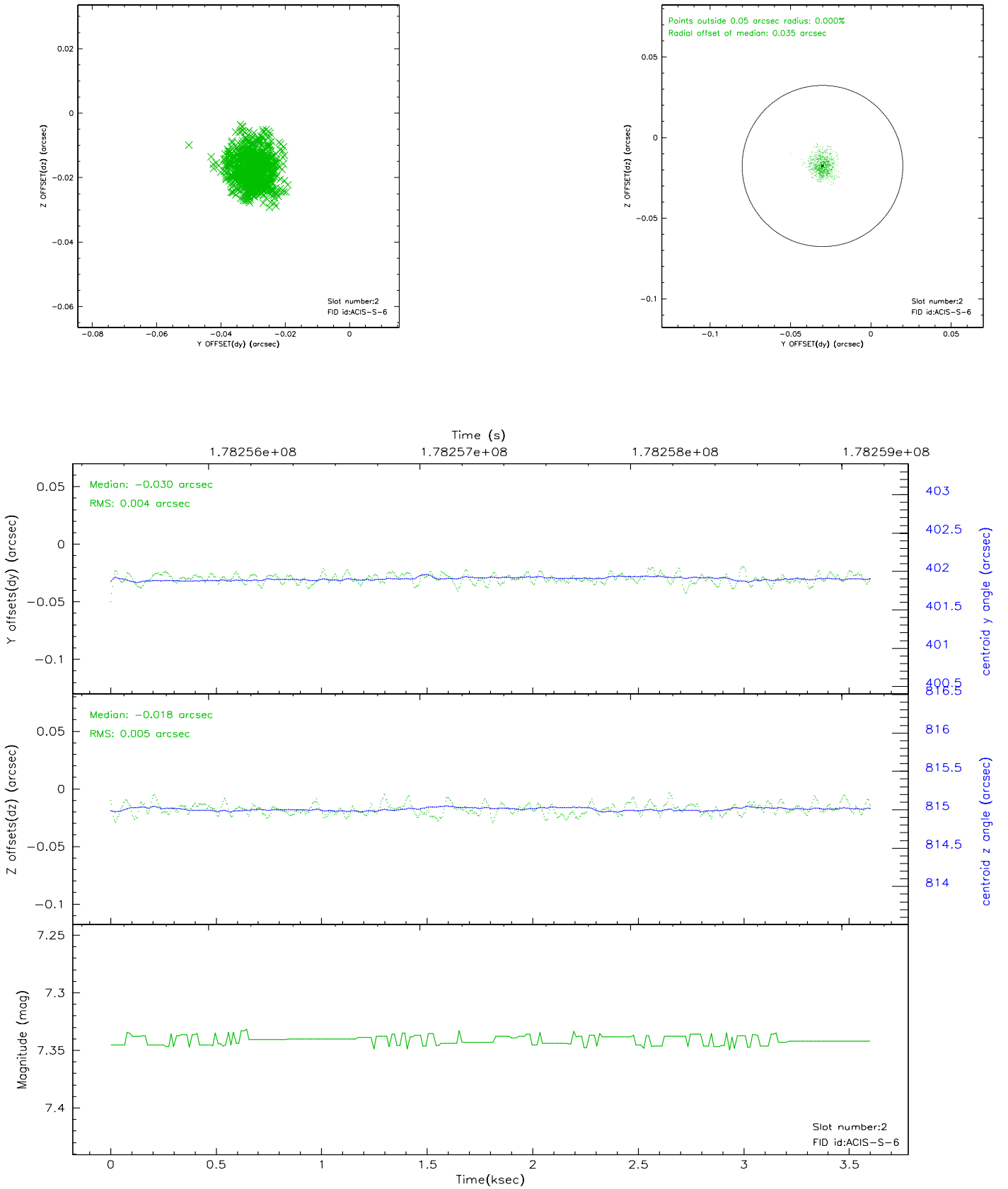
### 2.5.1 Slot 0



## 2.5.2 Slot 1

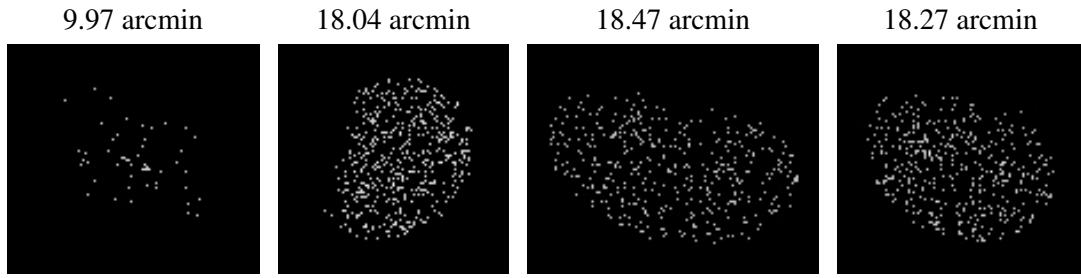


### 2.5.3 Slot 2





### 3 Point Sources



## A Summary

### A.1 Status

V&V Scientist	Beth Sundheim
V&V Date (YYYY-MM-DD)	2006.07.07
V&V Edition	1
V&V Disposition and Status	OK
V&V Charge Time	3.59

### A.2 Comments