

V&V Reference Report

L2 ASCDS Version : 8.4.5

Observation 4059 - L2 Version 3
Chandra X-Ray Center

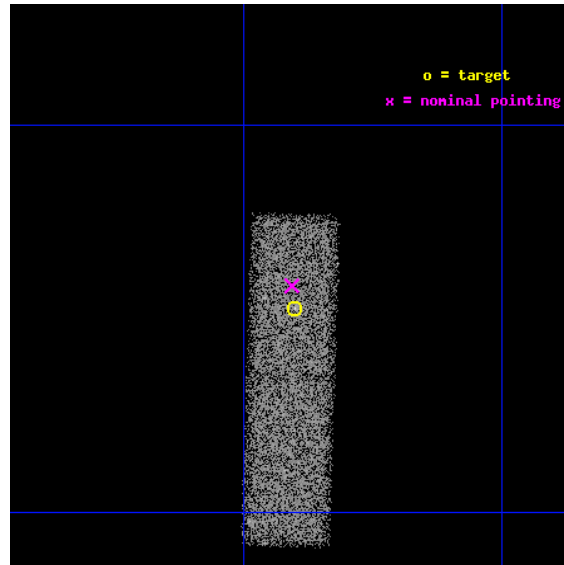
L2 Processing Date : Oct 20 2012

Contents

1	Front	2
2	OBI	3
2.1	OBI	3
2.1.1	Images	3
2.1.2	Bias	3
2.1.3	Parameters	4
2.1.4	Events	4
2.2	Compared Parameters	5
2.3	Aspect	6
2.4	Star Slots	9
2.4.1	Slot 3	9
2.4.2	Slot 4	10
2.4.3	Slot 5	11
2.4.4	Slot 6	12
2.4.5	Slot 7	13
2.5	FID Slots	14
2.5.1	Slot 0	14
2.5.2	Slot 1	15
2.5.3	Slot 2	16
A	Summary	17
A.1	Status	17
A.2	Comments	17

1 Front

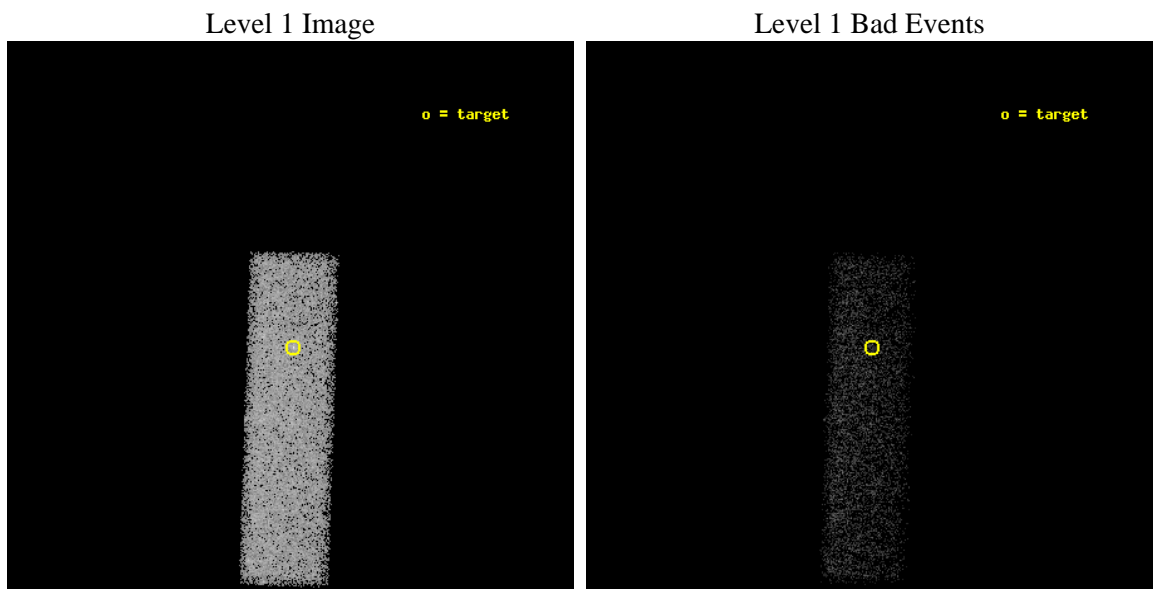
seq_num	700738	Sequence number
obs_id	4059	Observation id
title	ELUSIVE ACTIVE GALACTIC NUCLEI IN STARBURST GALAXIES	Proposal titl
observer	DR. ROBERTO MAIOLINO	Principal investigator
object	NGC2623	Source name
dtcycle	0	
cycle	P	events from which exps? Prim/Second/Both
ra_targ	129.600417	Observer's specified target RA [deg]
dec_targ	25.754722	Observer's specified target Dec [deg]
ra_nom	129.6019225121	Nominal RA [deg]
dec_nom	25.764291680505	Nominal Dec [deg]
roll_nom	91.852706842287	Nominal Roll [deg]
revision	3	Processing version of data
ontime	20810.400310099	Sum of GTIs [s]
livetime	19794.920869494	Livetime [s]
ontime7	20810.400310099	Sum of GTIs [s]
l2events	20692	Number of level 2 events



2 OBI

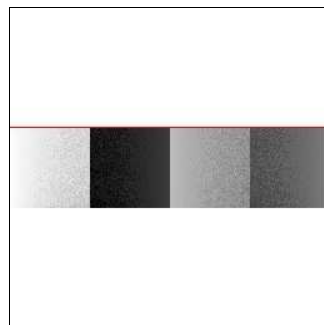
2.1 OBI

2.1.1 Images



2.1.2 Bias

Chip 7



2.1.3 Parameters

obi_num	1	Obi number	sched_exp_time	20000.000000	[s] Scheduled observation exposure time
ascdsver	8.4.5	Processing system revision	ontime	20810.400310099	Sum of GTIs [s]
caldsver	4.5.2	 	ontime7	20810.400310099	Sum of GTIs [s]
date	2012-10-20T16:48:01	Date and time of file creation	l1events	46229	Number of level 1 events
revision	3	Processing version of data			

2.1.4 Events

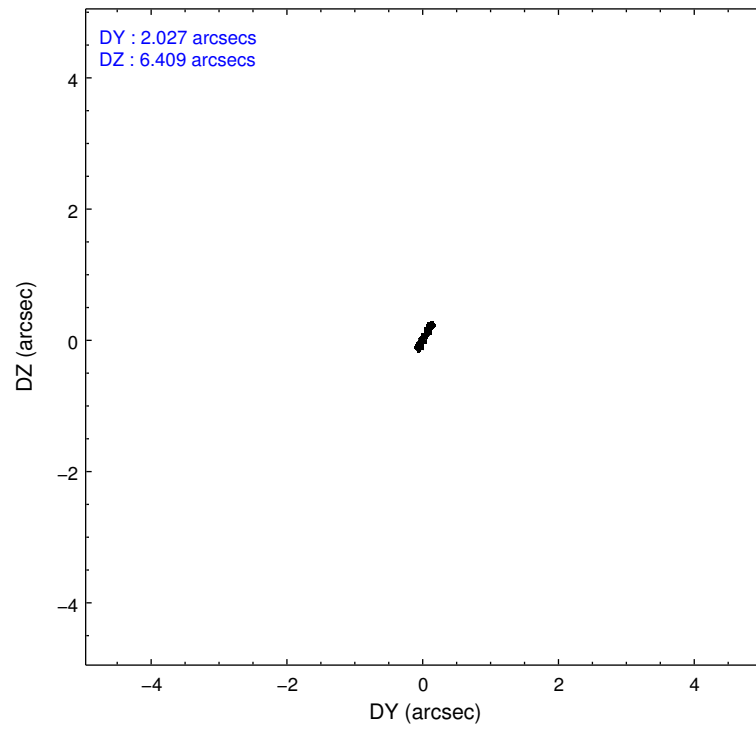
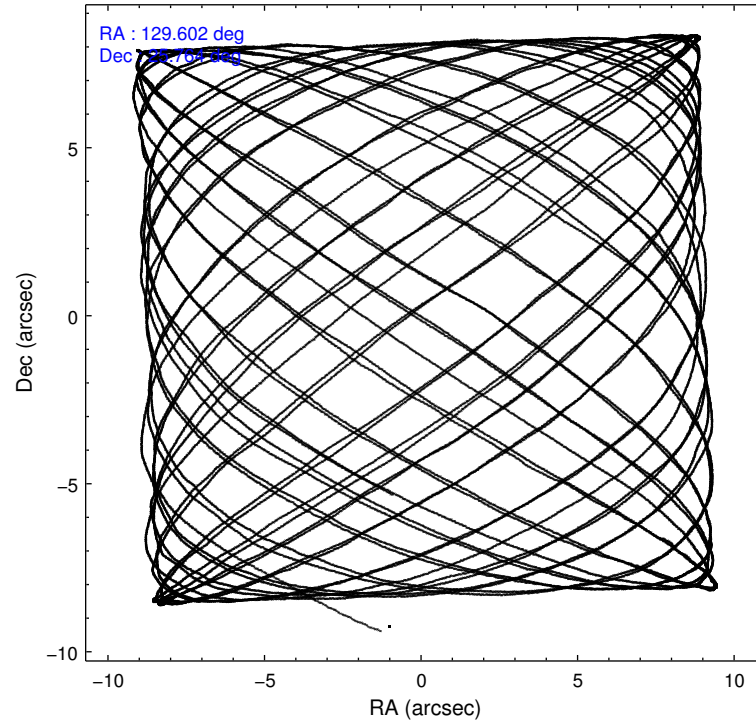
	ccd 7
level 1 events	46229
rejected events	24914
rejected %	53%

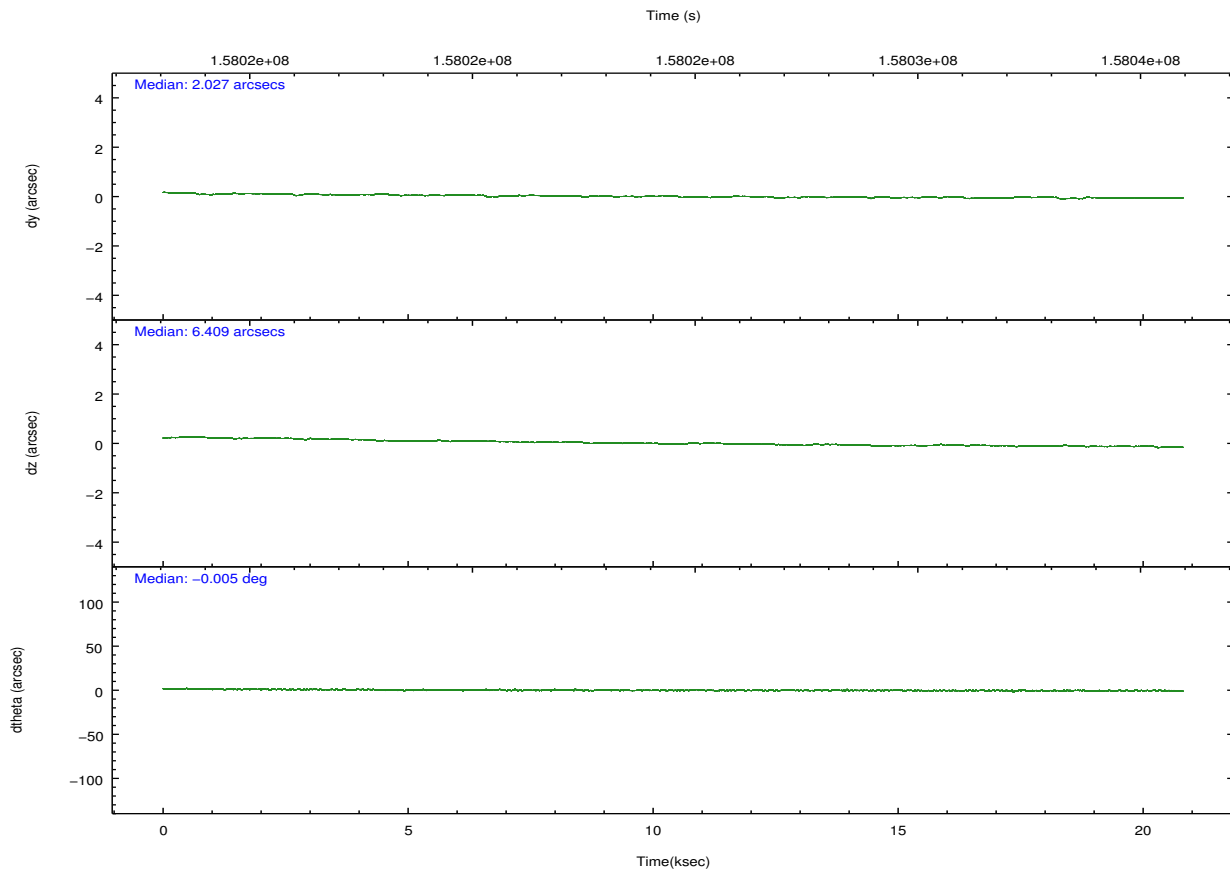
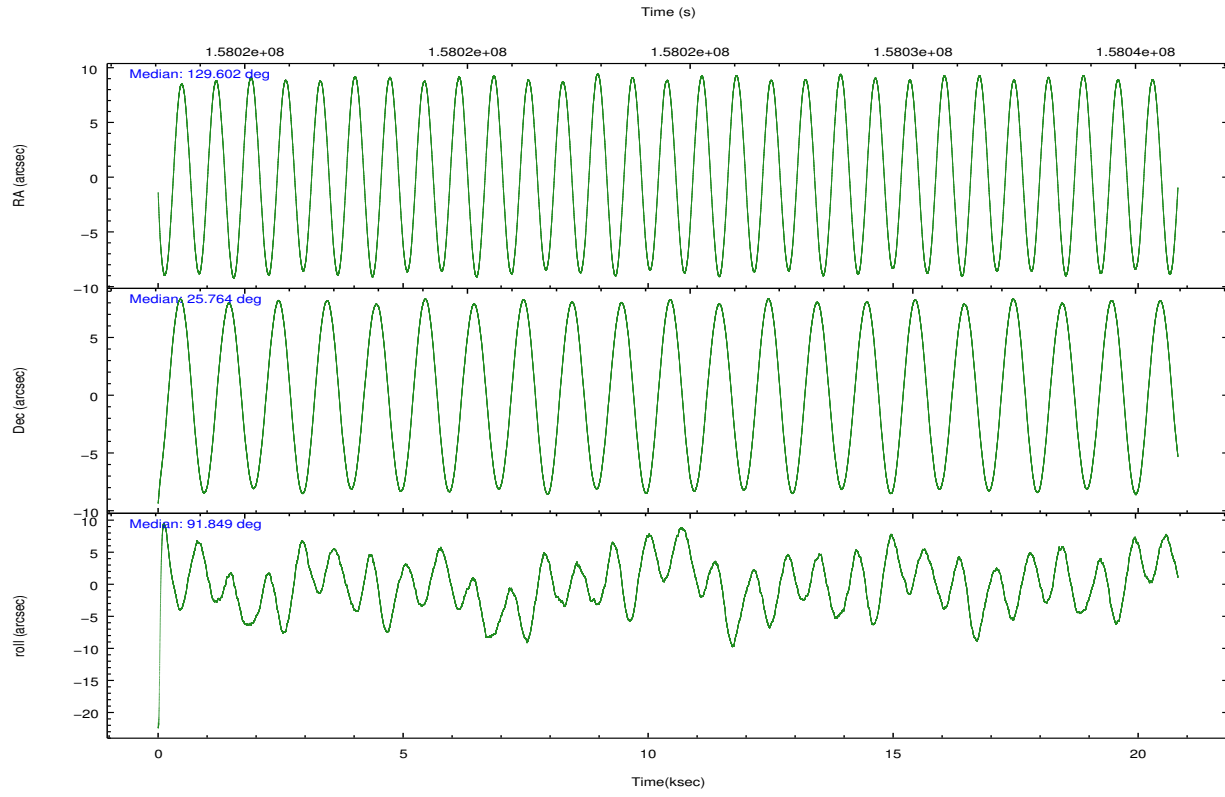
	ccd 7
grade 0 events	2155
	4%
grade 1 events	53
	0%
grade 2 events	4064
	8%
grade 3 events	2369
	5%
grade 4 events	2355
	5%
grade 5 events	4203
	9%
grade 6 events	10388
	22%
grade 7 events	20642
	44%

2.2 Compared Parameters

Parameter	Planned	Actual	Parameter	Planned	Actual
Instrument	ACIS	ACIS	Obspar format version number	7	7
Detector	ACIS-7	ACIS-7	Obspar file type	PREDICTED	ACTUAL
Grating	NONE	NONE	Obspar update status	NONE	UPDATED
Data mode	FAINT	FAINT	Number of optional ACIS chips dropped	0	0
Observation mode	POINTING	POINTING	On-chip summing requested	N	N
[deg] Pointing RA	129.618255	129.6019225120969	Subarray requested	CUSTOM	1/4
[deg] Pointing Dec	25.741349	25.76429168050525	Subarray start row	384	385
[deg] Pointing Roll	91.688994	91.85270684228655	Subarray row count	256	256
[mm] SIM focus pos	-0.684267	-0.6828225247311905	Alternating exposures requested	N	N
[mm] SIM defocus	0	0.001444936568705701	[s] Primary exposure time	0.000000	0.8
[mm] SIM translation stage pos	-190.132523	-190.1425803651734			
[mm] SIM translation stage offset	0	0.01005778216563158			
[s] Observation start time (MET)	158014908.184000	158013632.20262			
Observation start date	2003-01-03T21:00:44	2003-01-03T20:40:32			
[s] Observation end time (MET)	158034908.184000	158035583.09103			
Observation end date	2003-01-04T02:34:04	2003-01-04T02:46:23			
Read mode	TIMED	TIMED			

2.3 Aspect



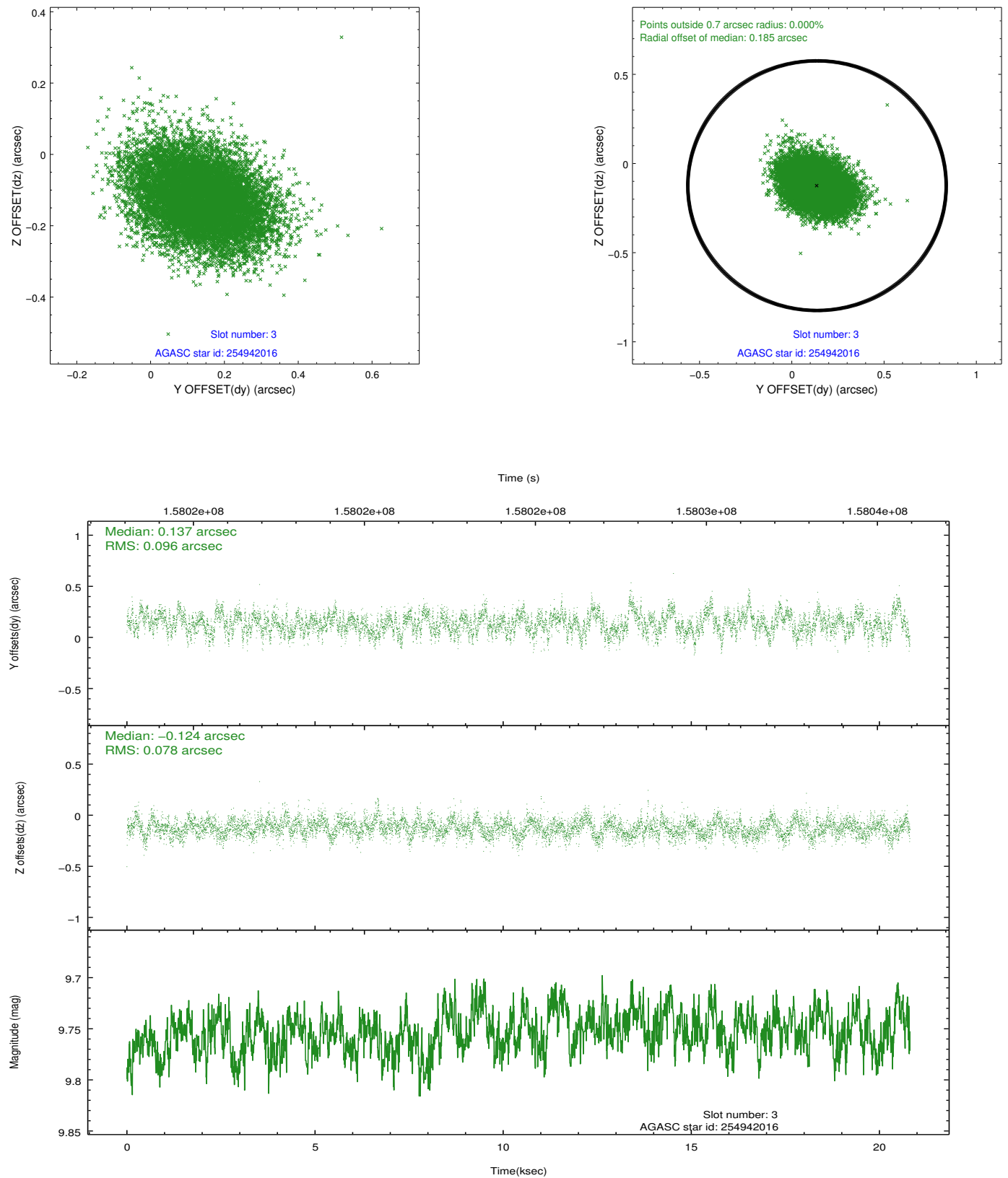


Slot Statistics

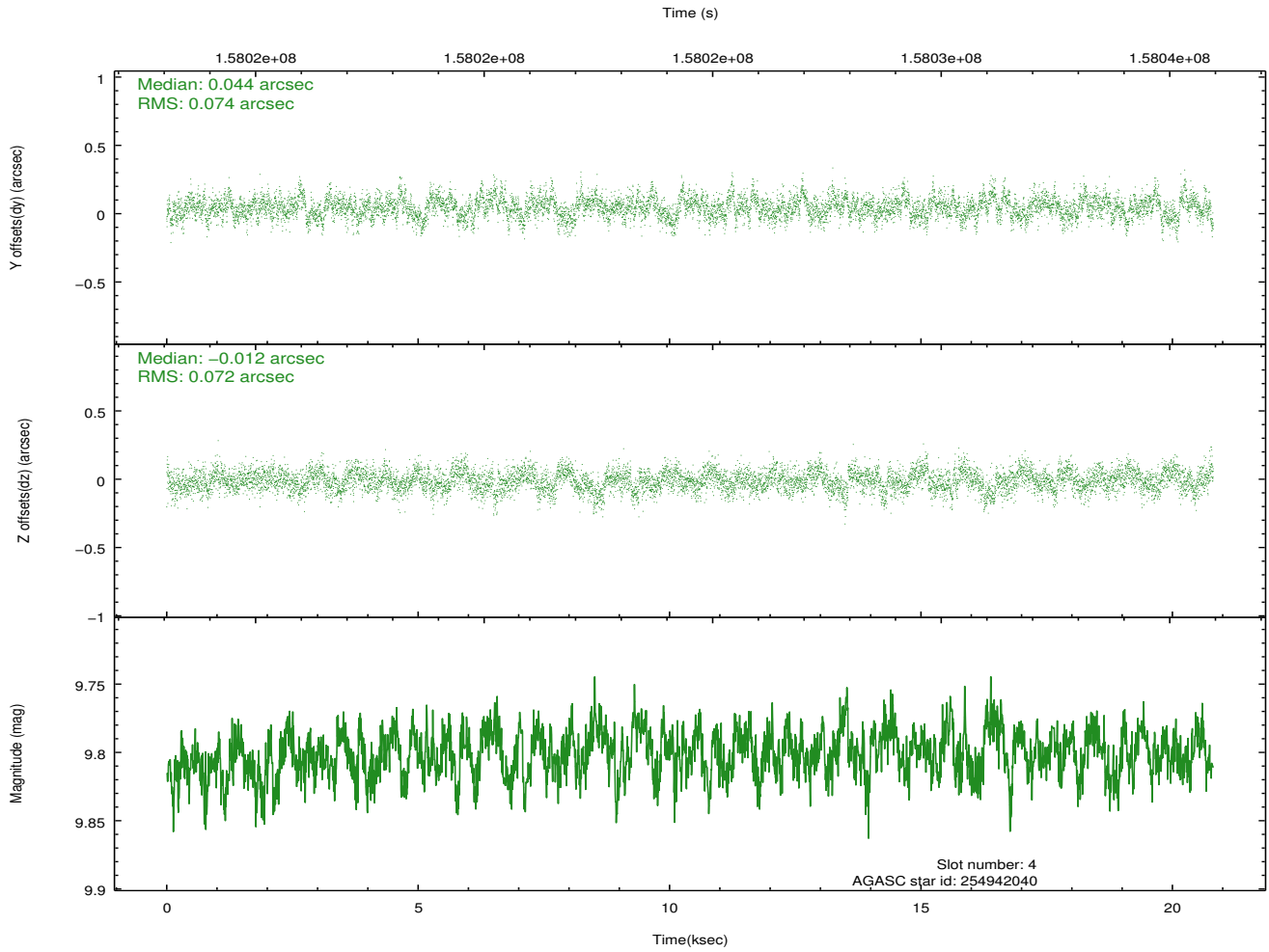
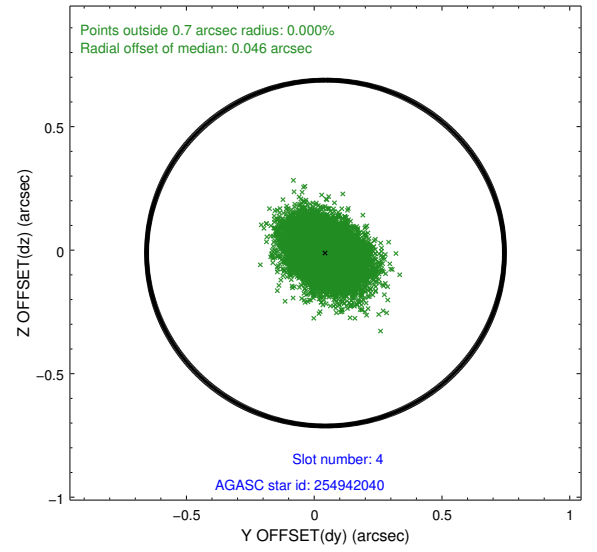
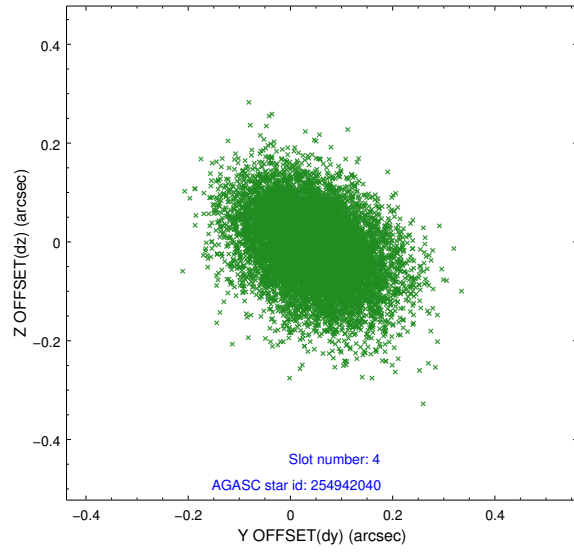
slot	status	id	mag	n_pts	med_dy	med_dz	dr1	dr2	ra	dec	mean_y	mean_z
0	FID	ACIS-S-2	7.11	5076	-0.058	-0.012	0.009	0.027	0.000000	0.000000	-754.68	-1727.55
1	FID	ACIS-S-4	7.21	5076	0.020	0.031	0.007	0.037	0.000000	0.000000	2158.56	180.84
2	FID	ACIS-S-5	7.24	5076	0.008	-0.011	0.008	0.017	0.000000	0.000000	-1807.27	174.60
3	GUIDE	254942016	9.75	10145	0.137	-0.124	0.131	0.214	129.080203	25.207438	-1865.90	1808.20
4	GUIDE	254942040	9.80	10144	0.044	-0.012	0.109	0.181	129.226731	25.579185	-544.24	1288.14
5	GUIDE	254943440	7.92	10148	-0.035	-0.045	0.073	0.117	129.178113	25.937283	749.42	1403.68
6	GUIDE	254944312	9.31	10147	-0.069	0.027	0.088	0.146	130.095041	26.079680	1175.15	-1576.65
7	GUIDE	254945152	9.48	10147	-0.079	0.159	0.098	0.159	130.091150	26.209782	1643.71	-1576.37

2.4 Star Slots

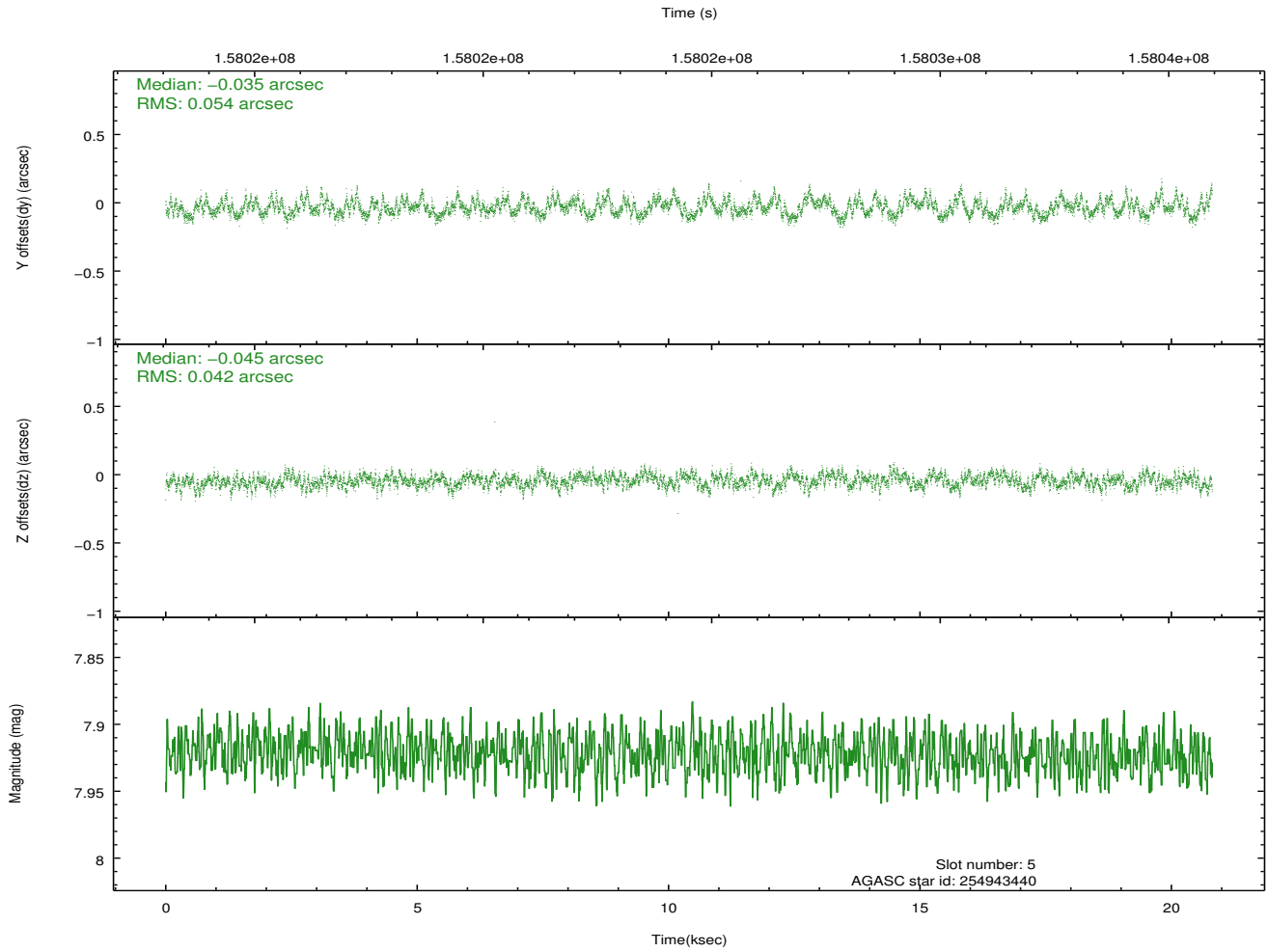
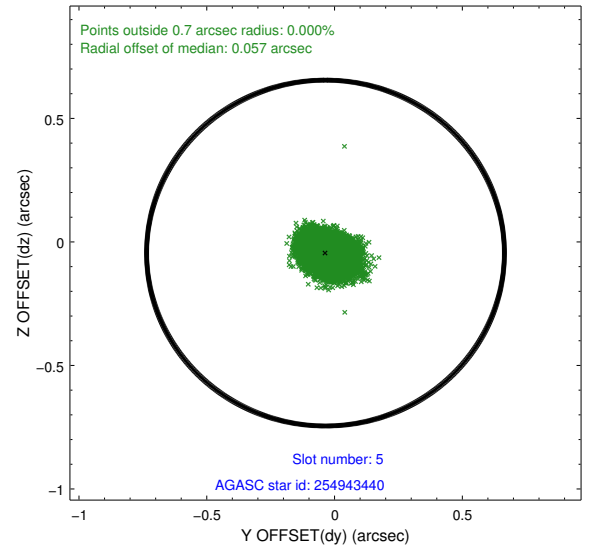
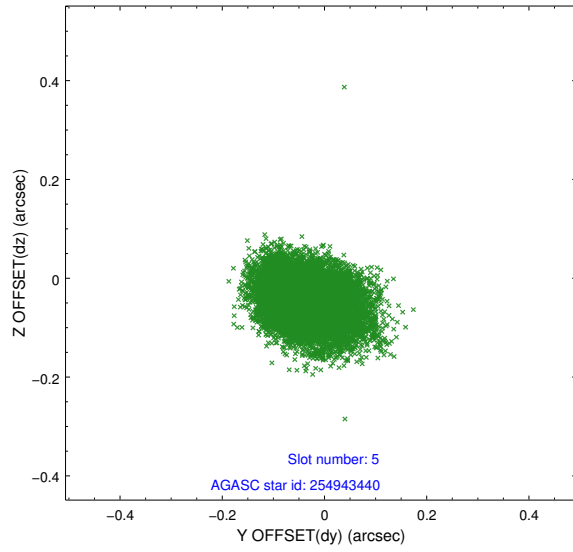
2.4.1 Slot 3



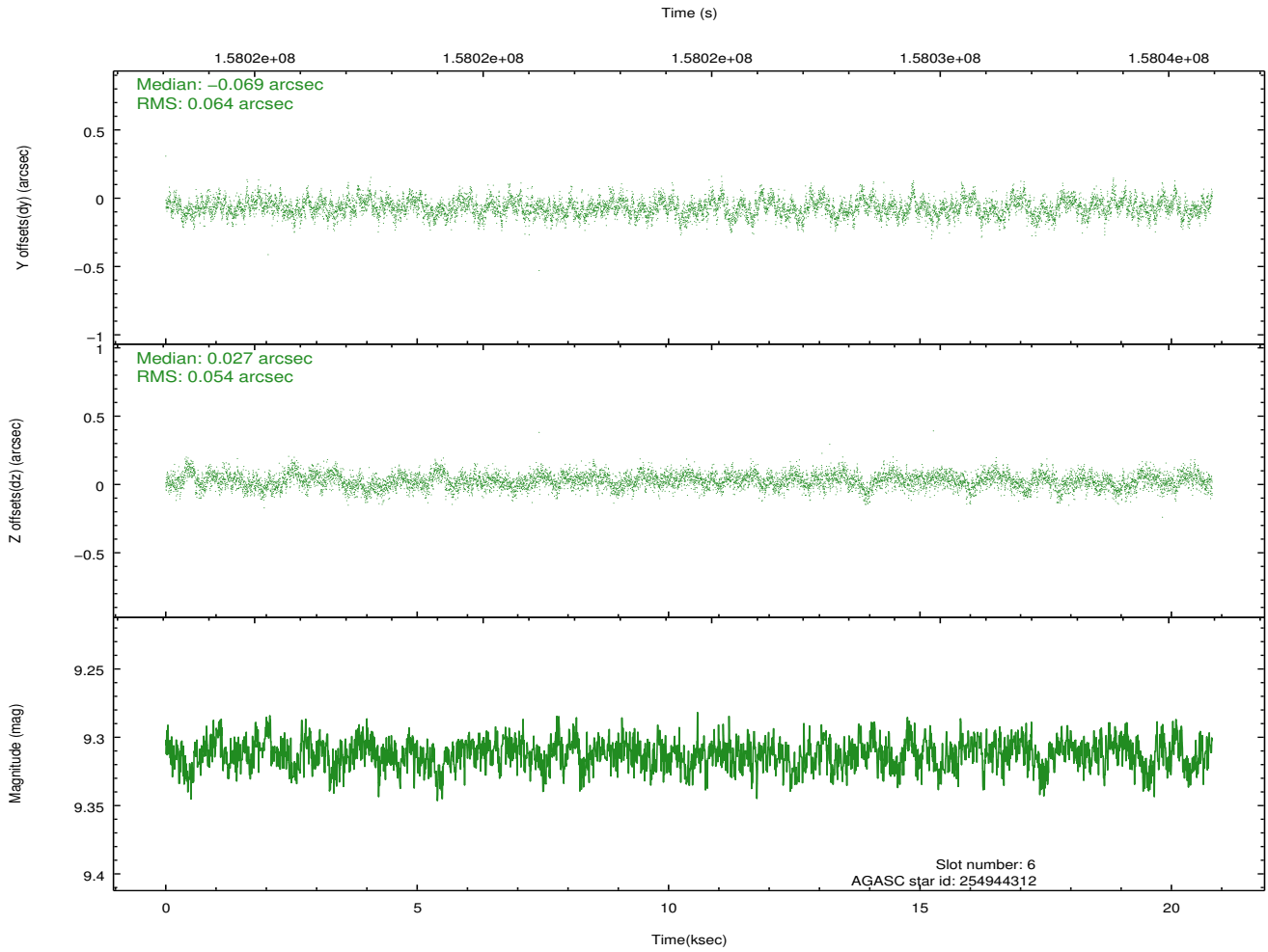
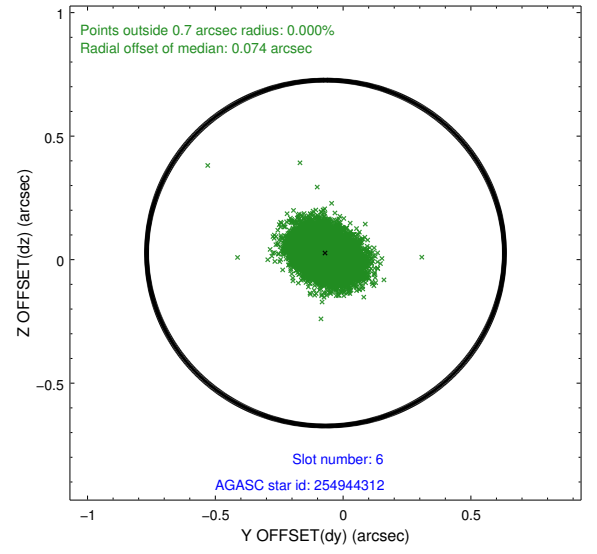
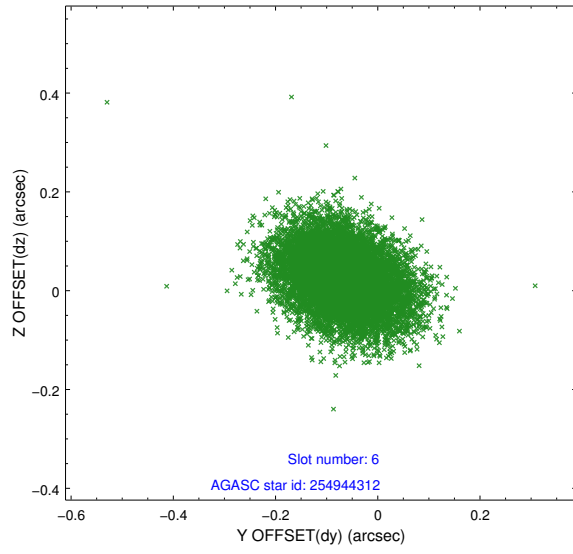
2.4.2 Slot 4



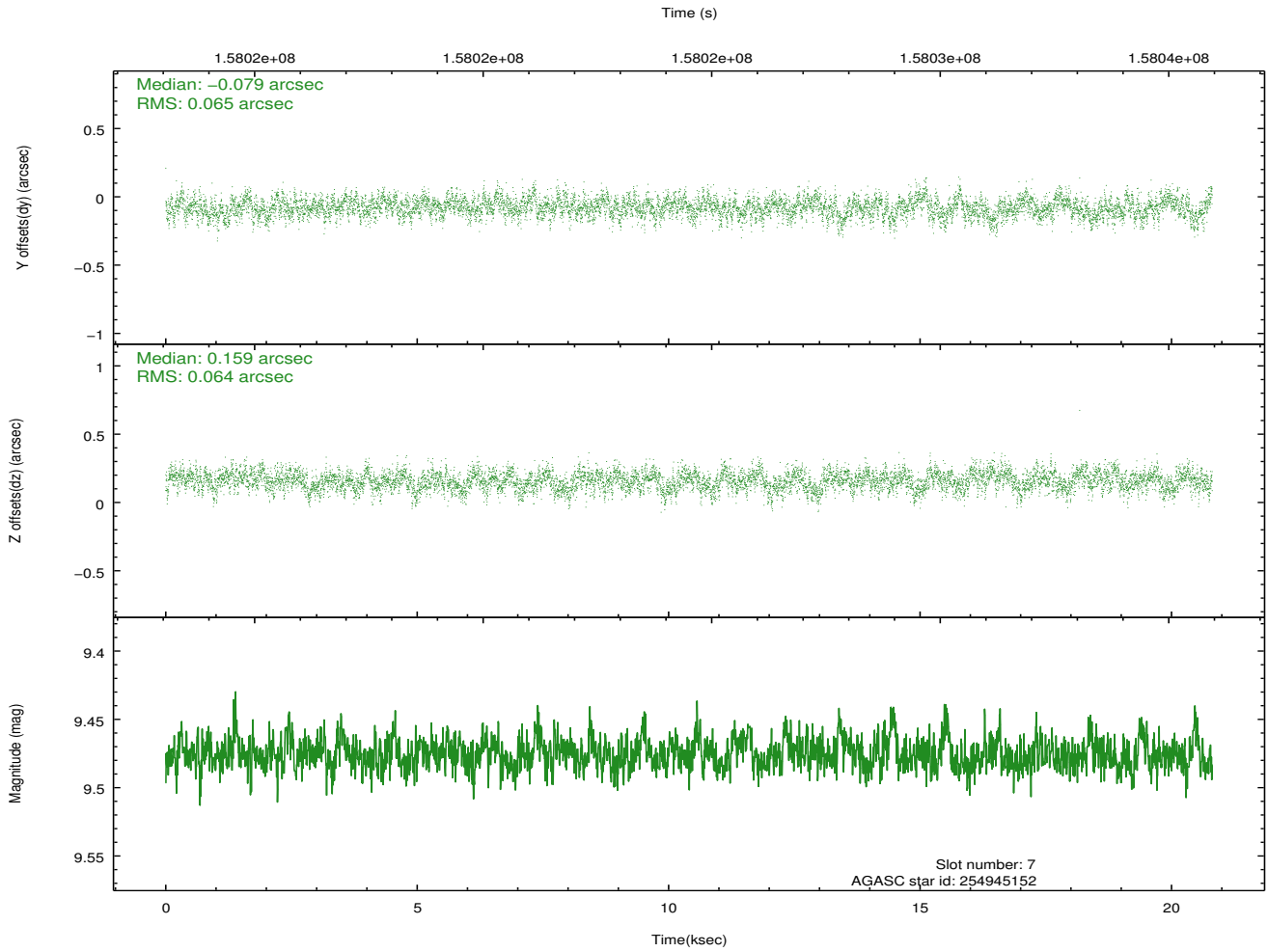
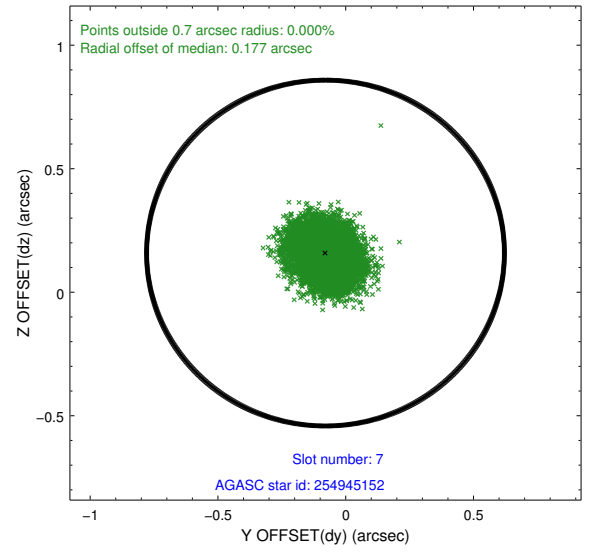
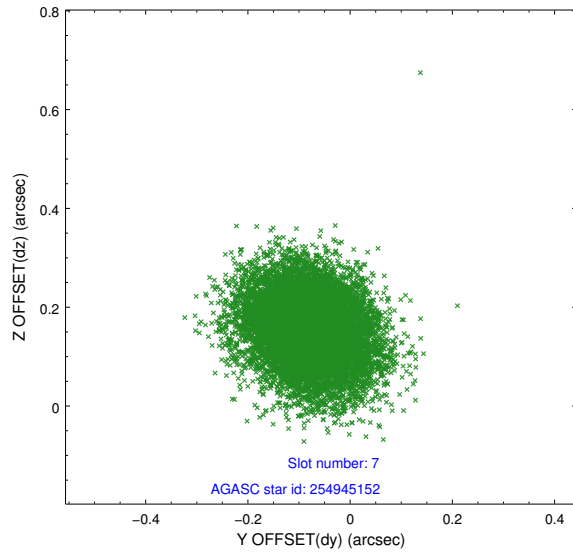
2.4.3 Slot 5



2.4.4 Slot 6

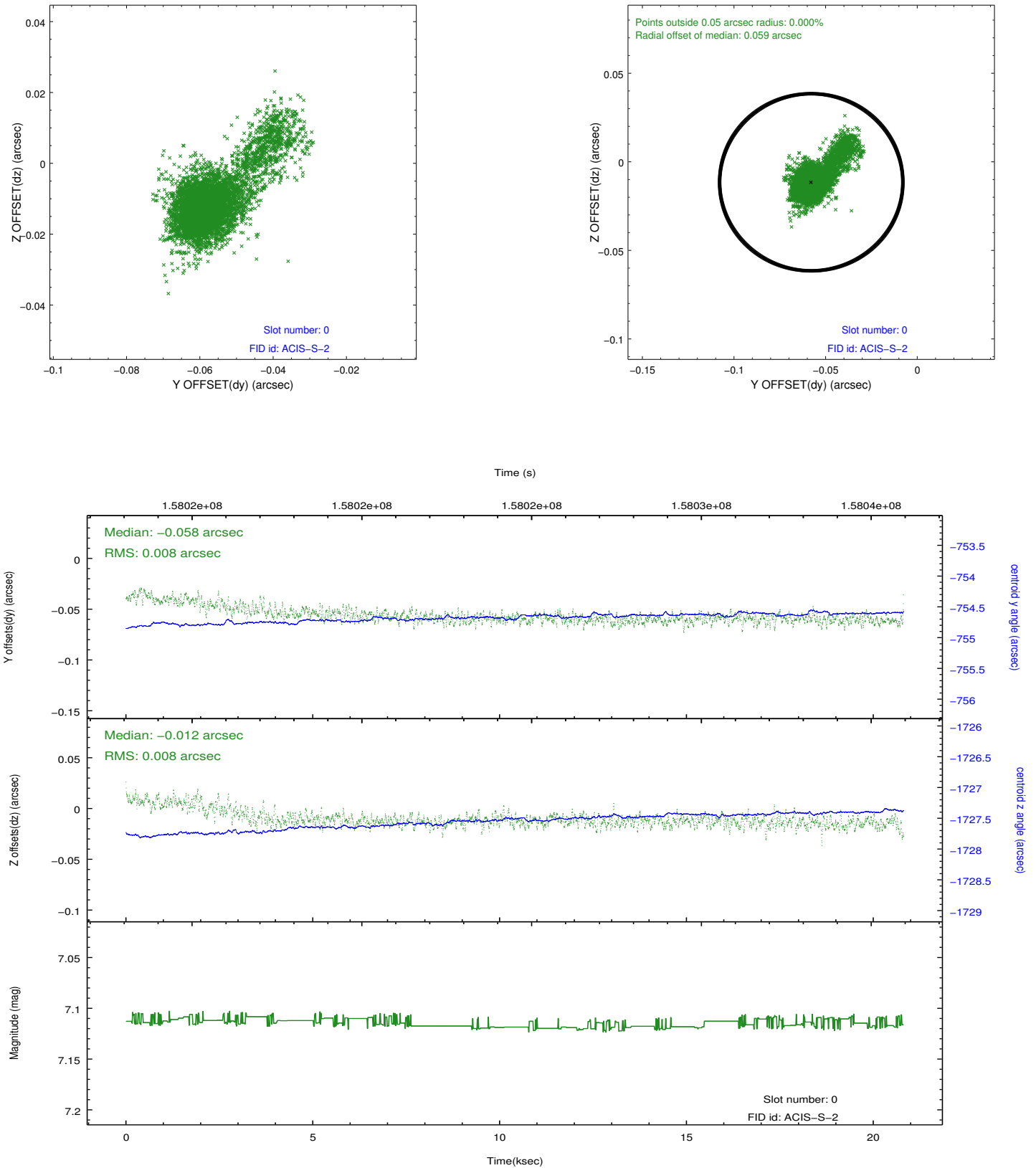


2.4.5 Slot 7

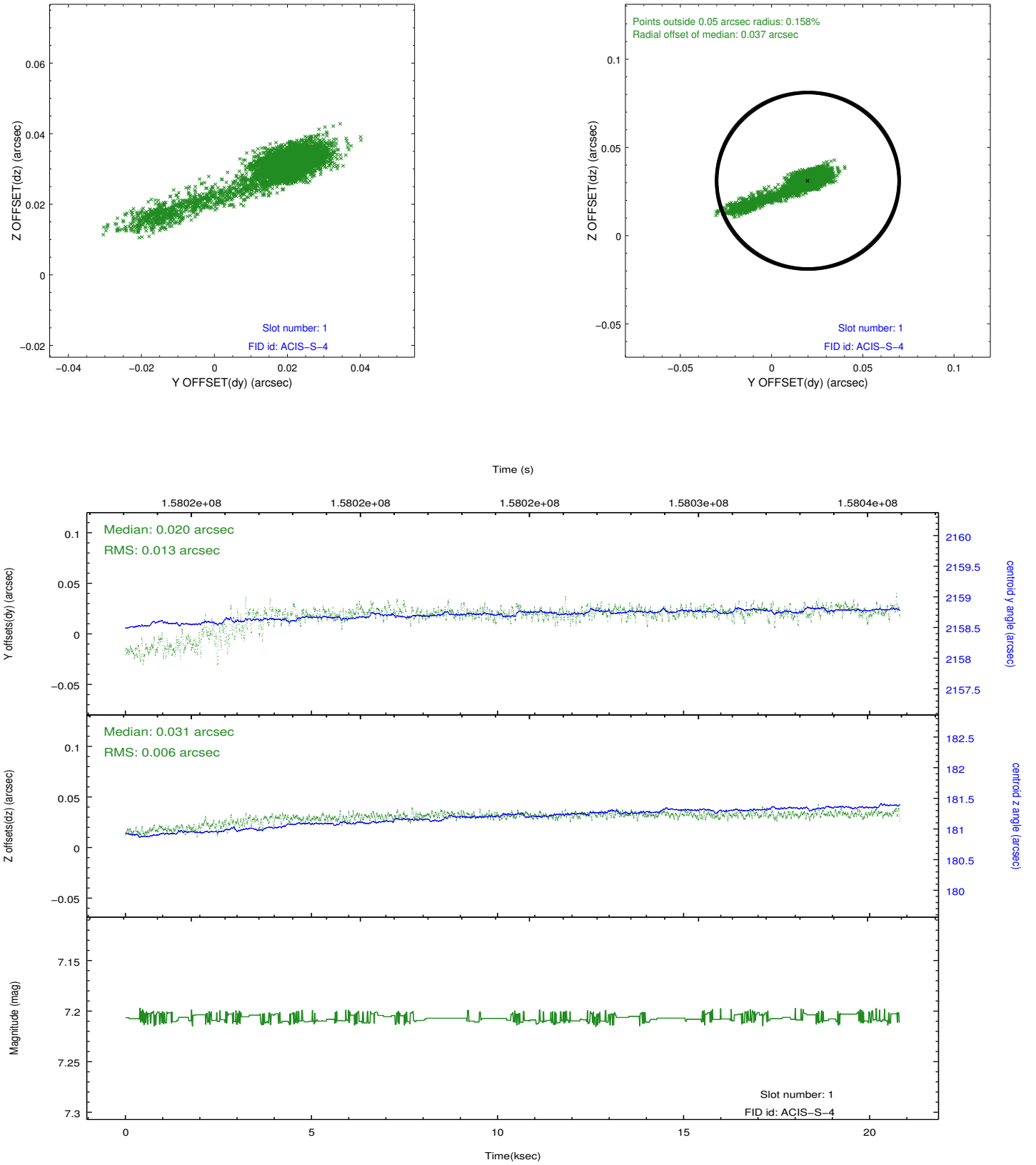


2.5 FID Slots

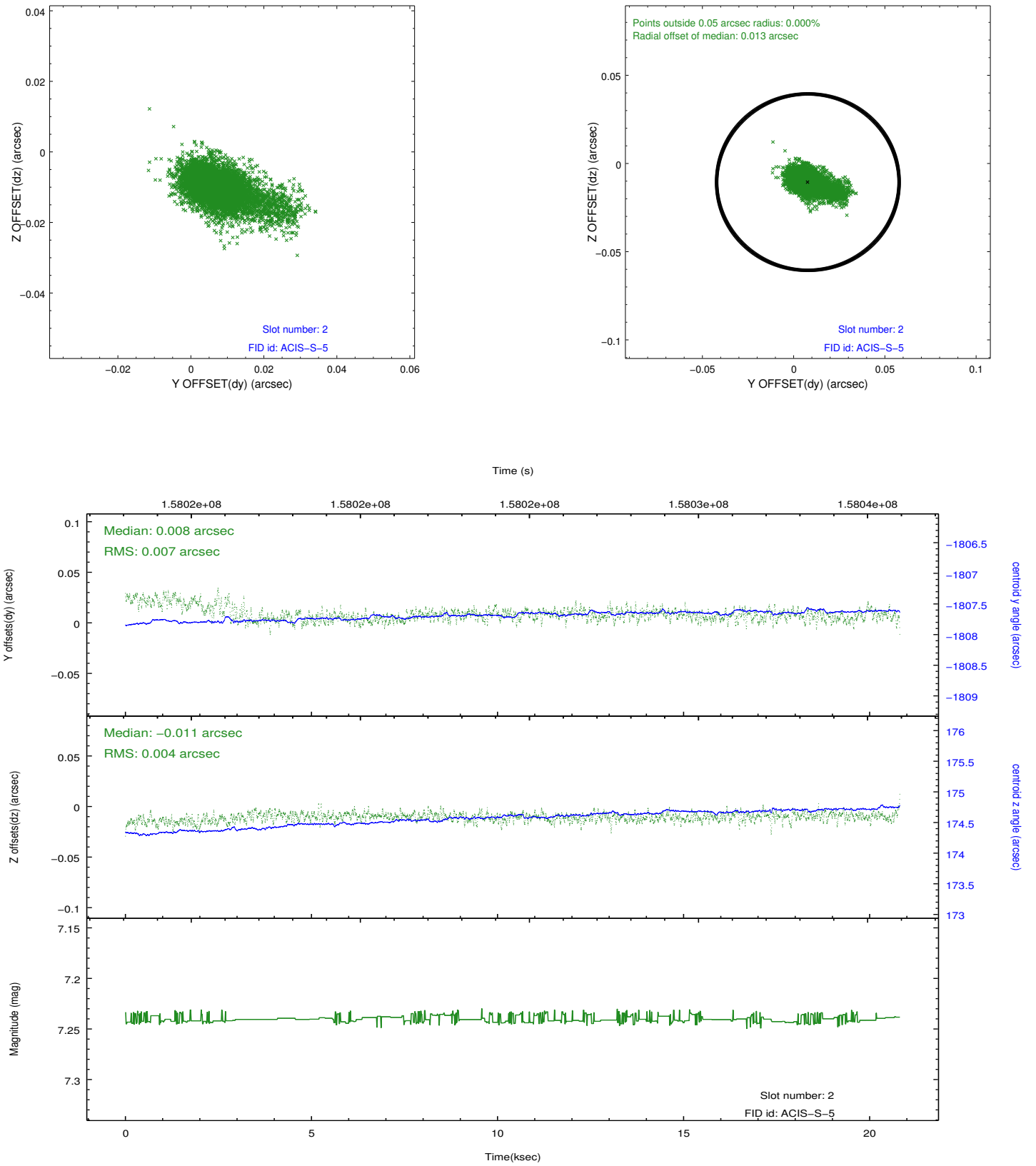
2.5.1 Slot 0



2.5.2 Slot 1



2.5.3 Slot 2



A Summary

A.1 Status

V&V Scientist	Jen Lauer
V&V Date (YYYY-MM-DD)	2012.12.06
V&V Edition	1
V&V Disposition and Status	OK
V&V Charge Time	20.81

A.2 Comments