

V&V Reference Report

L2 ASCDS Version : 8.1.1

Observation 389 - L2 Version 4

Chandra X-Ray Center

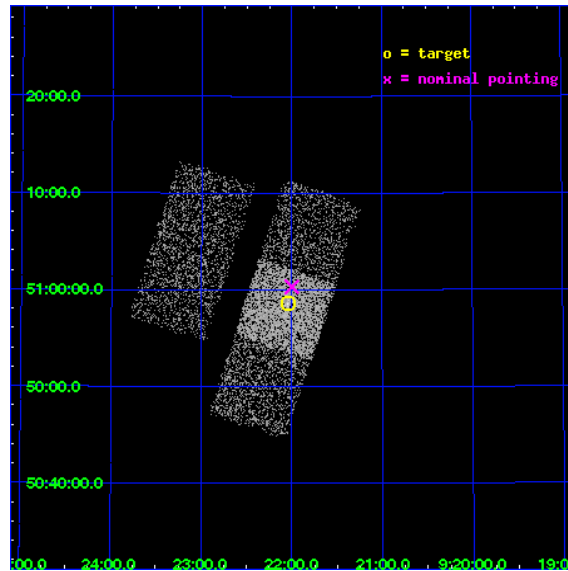
L2 Processing Date : Nov 26 2009

Contents

1	Front	2
2	OBI	3
2.1	OBI	3
2.1.1	Images	3
2.1.2	Bias	3
2.1.3	Parameters	4
2.1.4	Events	4
2.2	Compared Parameters	5
2.3	Aspect	6
2.4	Star Slots	9
2.4.1	Slot 3	9
2.4.2	Slot 4	10
2.4.3	Slot 5	11
2.4.4	Slot 6	12
2.5	FID Slots	13
2.5.1	Slot 0	13
2.5.2	Slot 1	14
2.5.3	Slot 2	15
3	Point Sources	16
A	Summary	17
A.1	Status	17
A.2	Comments	17

1 Front

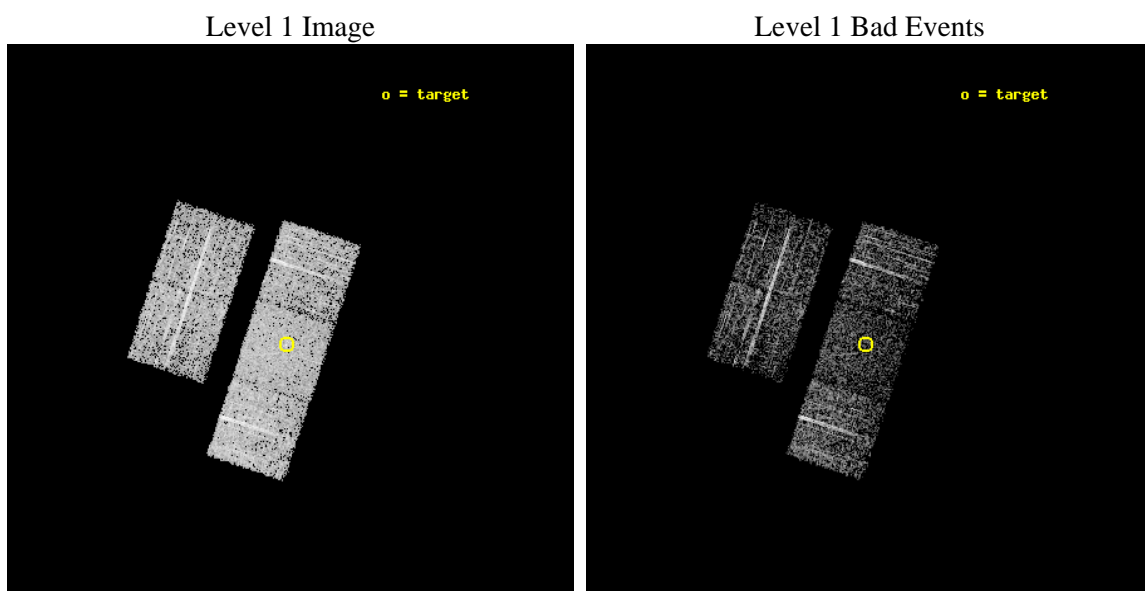
seq_num	700061	Sequence number
obs_id	389	Observation id
title	LOW-LUMINOSITY ACTIVE GALACTIC NUCLEI IN NEARBY GALAXIES	Proposal
observer	Prof Gordon Garmire	Principal investigator
object	NGC 2841	Source name
dtcycle	0	
cycle	P	events from which exps? Prim/Second/Both
ra_targ	140.51125	Observer's specified target RA
dec_targ	50.976389	Observer's specified target Dec
ra_nom	140.49969281428	Nominal RA
dec_nom	51.0054087298	Nominal Dec
roll_nom	108.16555393892	Nominal Roll
revision	4	Processing version of data
ontime	1771.6482991725	Sum of GTIs [s]
livetime	1749.2146216499	Livetime [s]
ontime2	1771.6072591692	Sum of GTIs [s]
ontime3	1774.7661094517	Sum of GTIs [s]
ontime6	1774.807149455	Sum of GTIs [s]
ontime7	1771.6482991725	Sum of GTIs [s]
ontime8	1774.7249597535	Sum of GTIs [s]
l2events	11634	Number of level 2 events



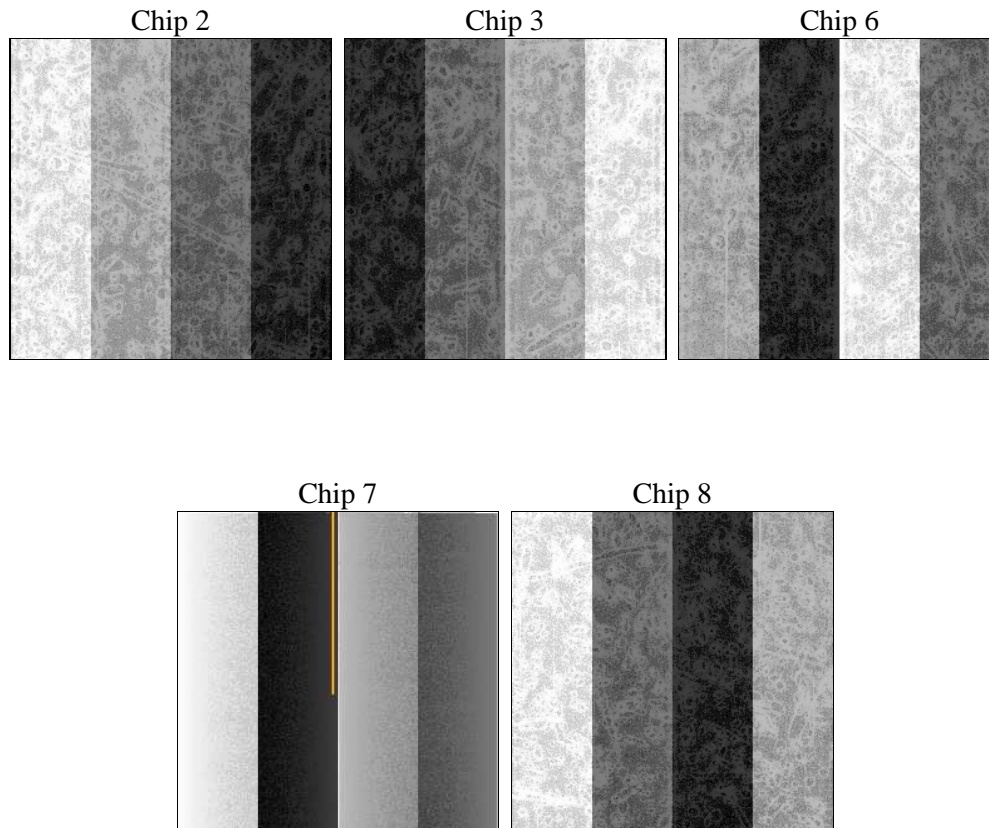
2 OBI

2.1 OBI

2.1.1 Images



2.1.2 Bias



2.1.3 Parameters

obi_num	0	Obi number	sched_exp_time	2000.000000	Scheduled observation exposure time
ascdsver	8.1.1	ASCDS version number	ontime	1771.6482991725	Sum of GTIs [s]
caldsver	4.1.4	 	ontime2	1771.6072591692	Sum of GTIs [s]
date	2009-11-26T06:59:25	Date and time of file creation	ontime3	1774.7661094517	Sum of GTIs [s]
revision	3	Processing version of data	ontime6	1774.807149455	Sum of GTIs [s]
			ontime7	1771.6482991725	Sum of GTIs [s]
			ontime8	1774.7249597535	Sum of GTIs [s]
			l1events	83231	Number of level 1 events

2.1.4 Events

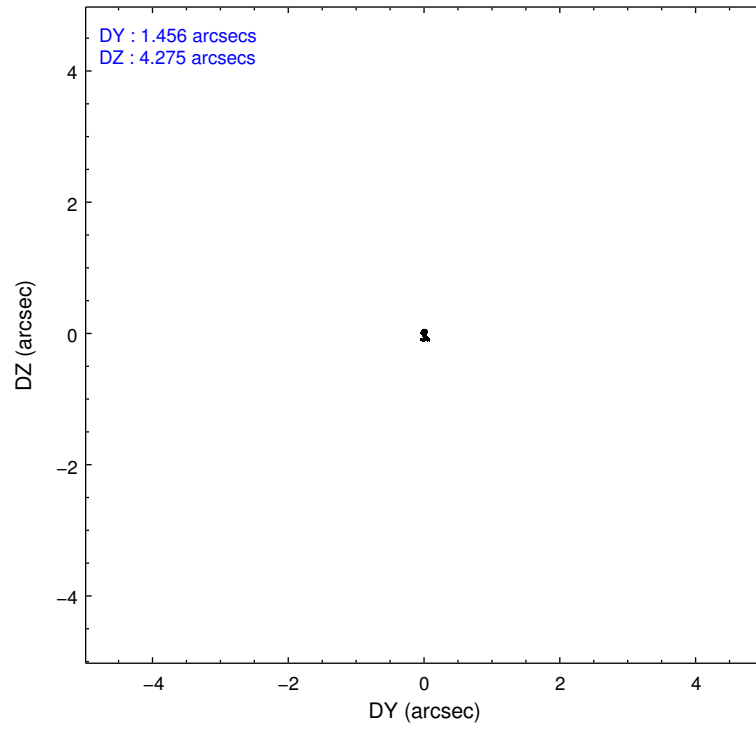
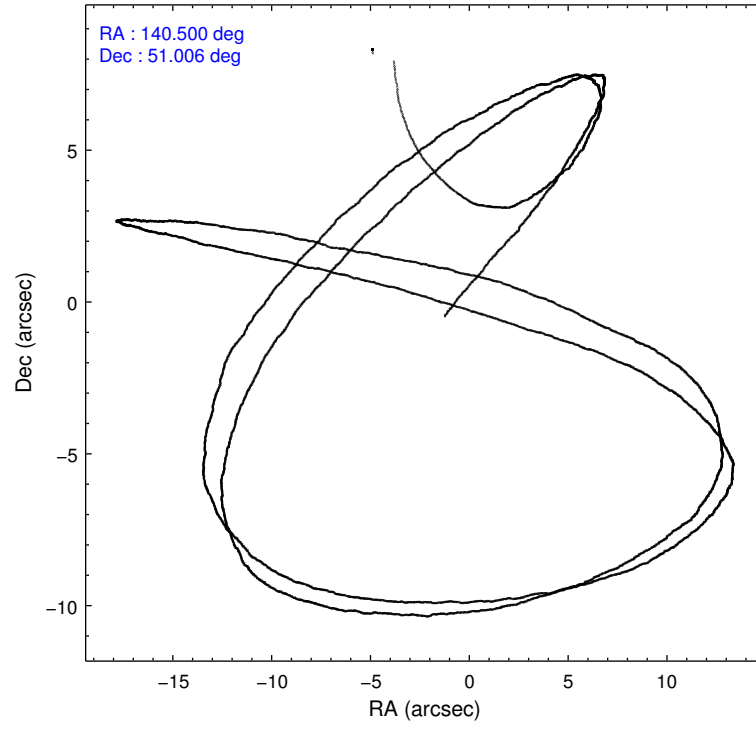
	ccd 2	ccd 3	ccd 6	ccd 7	ccd 8
level 1 events	14923	15762	15339	16764	20443
rejected events	13517	14347	13915	10300	17630
rejected %	90%	91%	90%	61%	86%

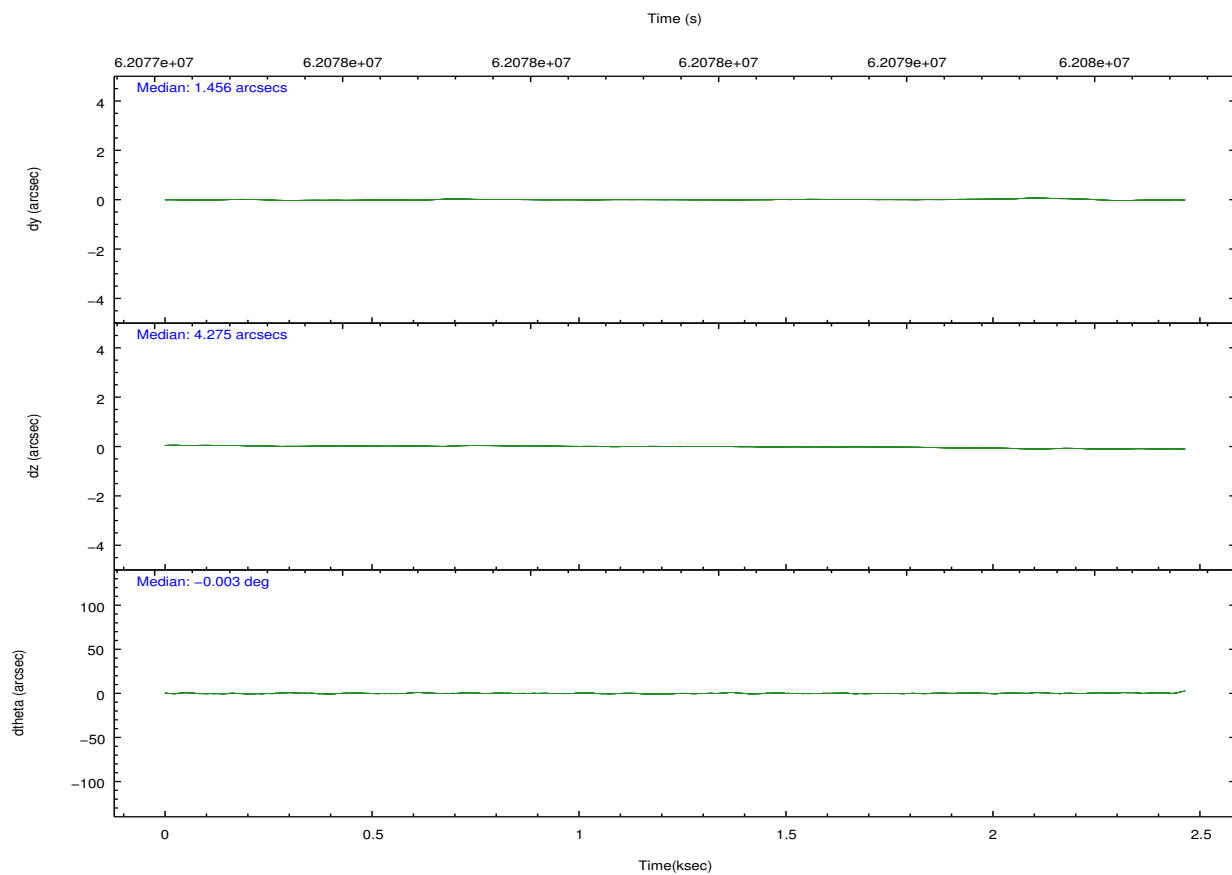
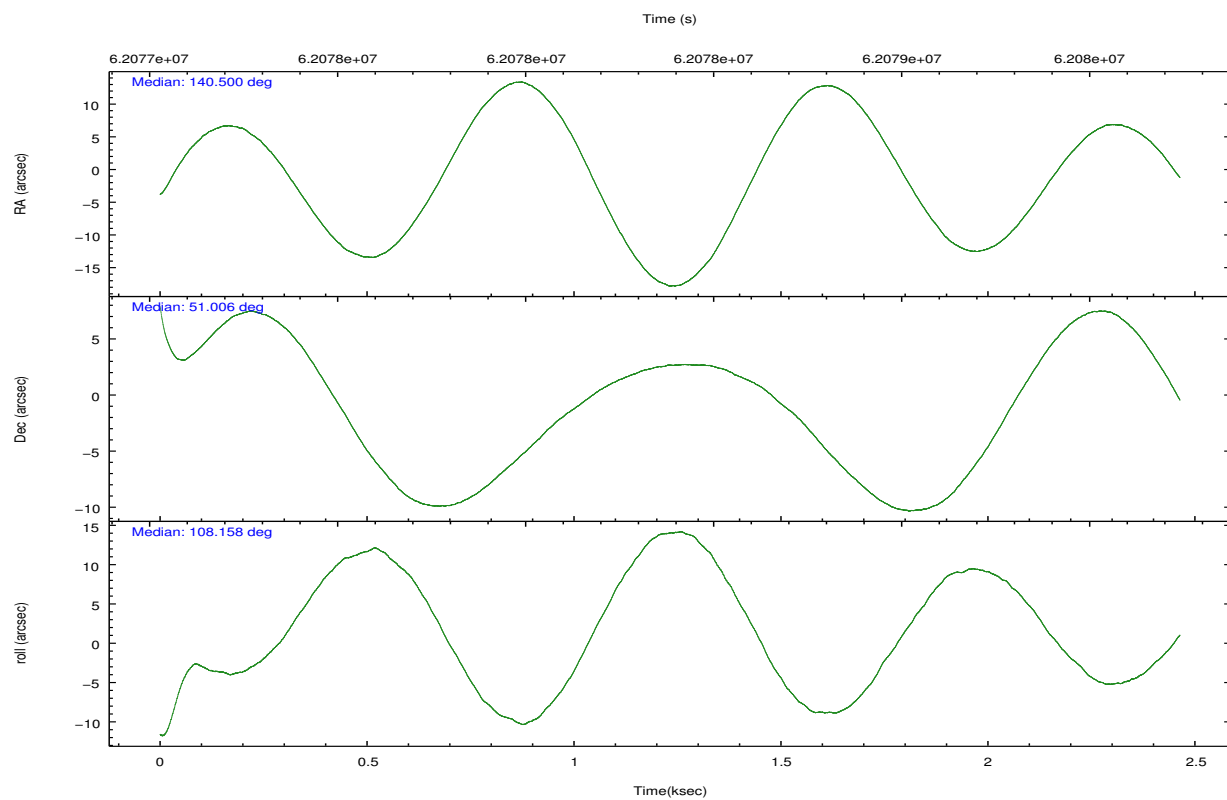
	ccd 2	ccd 3	ccd 6	ccd 7	ccd 8
grade 0 events	355	267	265	486	639
	2%	1%	1%	2%	3%
grade 1 events	2	1	3	7	3
	0%	0%	0%	0%	0%
grade 2 events	572	599	532	1423	880
	3%	3%	3%	8%	4%
grade 3 events	96	93	95	399	232
	0%	0%	0%	2%	1%
grade 4 events	77	78	105	350	214
	0%	0%	0%	2%	1%
grade 5 events	265	285	312	993	399
	1%	1%	2%	5%	1%
grade 6 events	313	387	431	3819	858
	2%	2%	2%	22%	4%
grade 7 events	13243	14052	13596	9287	17218
	88%	89%	88%	55%	84%

2.2 Compared Parameters

Parameter	Planned	Actual	Parameter	Planned	Actual
Instrument	ACIS	ACIS	Obspar format version number	6	6
Detector	ACIS-23678	ACIS-23678	Obspar file type	PREDICTED	ACTUAL
Grating	NONE	NONE	Obspar update status	NONE	UPDATED
Data mode	FAINT	FAINT	Number of optional ACIS chips dropped	0	0
Observation mode	POINTING	POINTING	On-chip summing requested	N	N
Pointing RA	140.532131	140.4996928142804	Subarray requested	NONE	NONE
Pointing Dec	50.986626	51.0054087297996	Alternating exposures requested	N	N
Pointing Roll	107.983779	108.1655539389202	Primary exposure time	0.000000	3.2
SIM focus pos (mm)	-0.684267	-0.6828225247311905			
SIM defocus (mm)	0	0.001444936568705701			
SIM translation stage pos (mm)	-190.132523	-190.1400660498719			
SIM translation stage offset (mm)	0	0.00754346686406393			
Observation start time	62077615.184000	62076368.224312			
Observation start date	1999-12-20T11:45:51	1999-12-20T11:26:08			
Observation end time	62079615.184000	62080262.199453			
Observation end date	1999-12-20T12:19:11	1999-12-20T12:31:02			
Read mode	TIMED	TIMED			

2.3 Aspect



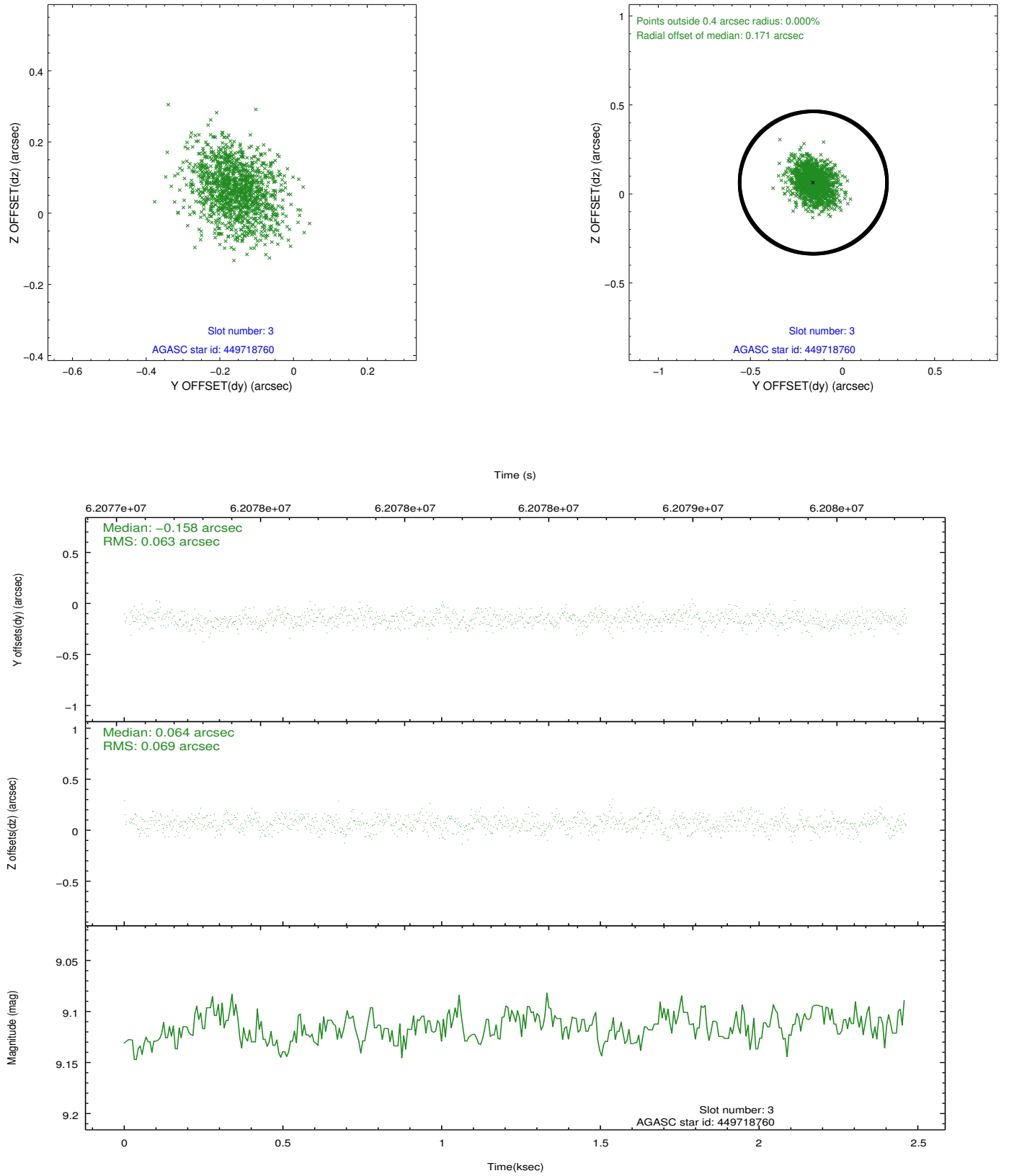


Slot Statistics

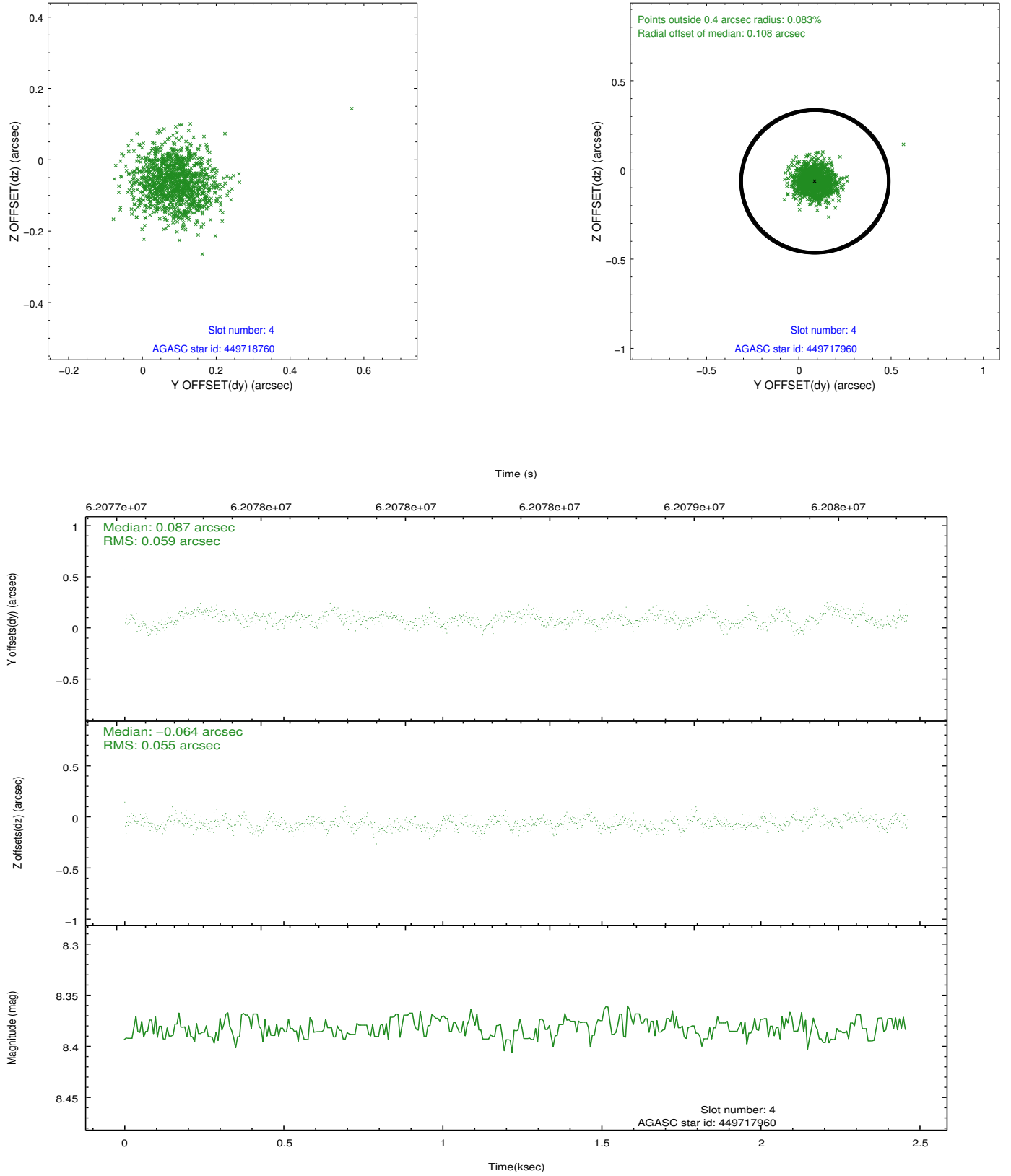
slot	status	id	mag	n_pts	med_dy	med_dz	dr1	dr2	ra	dec	mean_y	mean_z
0	FID	ACIS-S-3	7.37	1200	-0.014	-0.056	0.006	0.011	0.000000	0.000000	59.08	-1854.47
1	FID	ACIS-S-4	7.22	1200	0.015	0.035	0.005	0.009	0.000000	0.000000	2159.36	181.73
2	FID	ACIS-S-5	7.26	1201	-0.029	0.031	0.006	0.011	0.000000	0.000000	-1805.33	177.01
3	GUIDE	449718760	9.12	1197	-0.158	0.064	0.101	0.162	141.108305	51.597500	1698.01	-1904.47
4	GUIDE	449717960	8.38	1201	0.087	-0.064	0.085	0.139	141.183337	50.913061	-701.23	-1326.50
5	GUIDE	449708784	9.27	1200	-0.068	-0.045	0.120	0.189	139.281247	51.322176	2038.86	2296.82
6	GUIDE	449715168	9.94	1199	0.142	0.040	0.146	0.231	140.835455	50.626377	-1445.01	-255.76
7	UNUSED		0.00	0	0.000	0.000	0.000	0.000	0.000000	0.000000	0.00	0.00

2.4 Star Slots

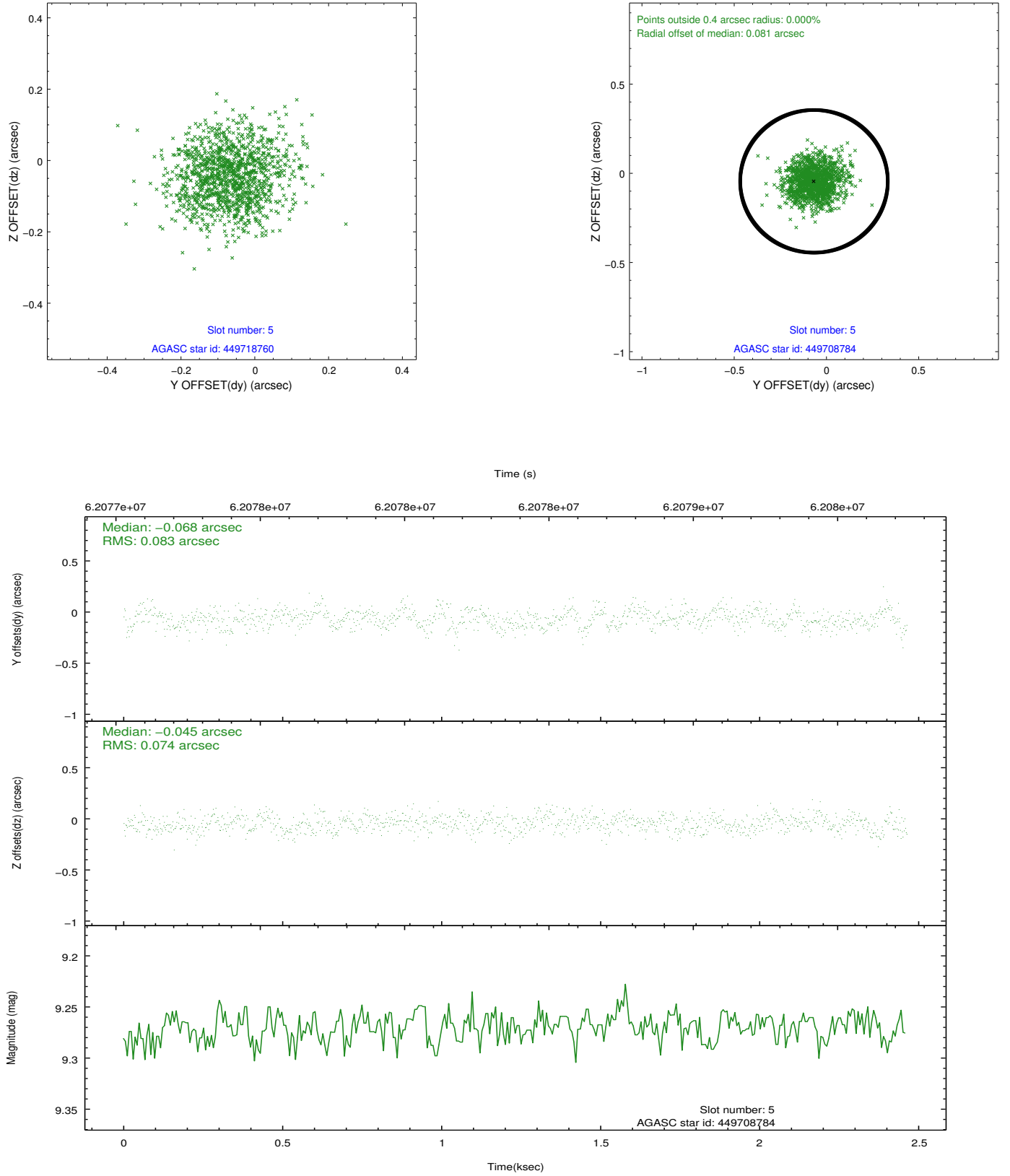
2.4.1 Slot 3



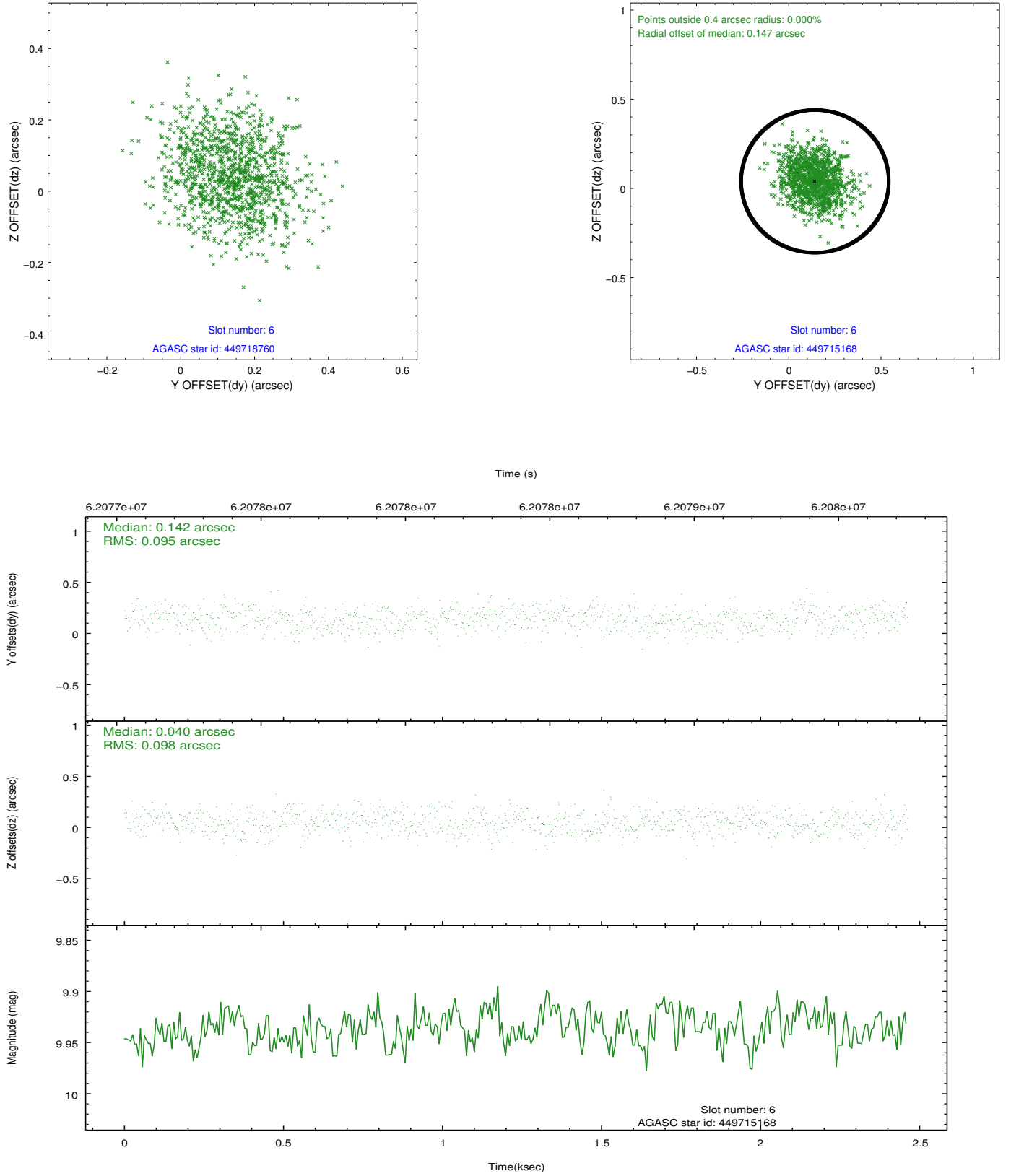
2.4.2 Slot 4



2.4.3 Slot 5

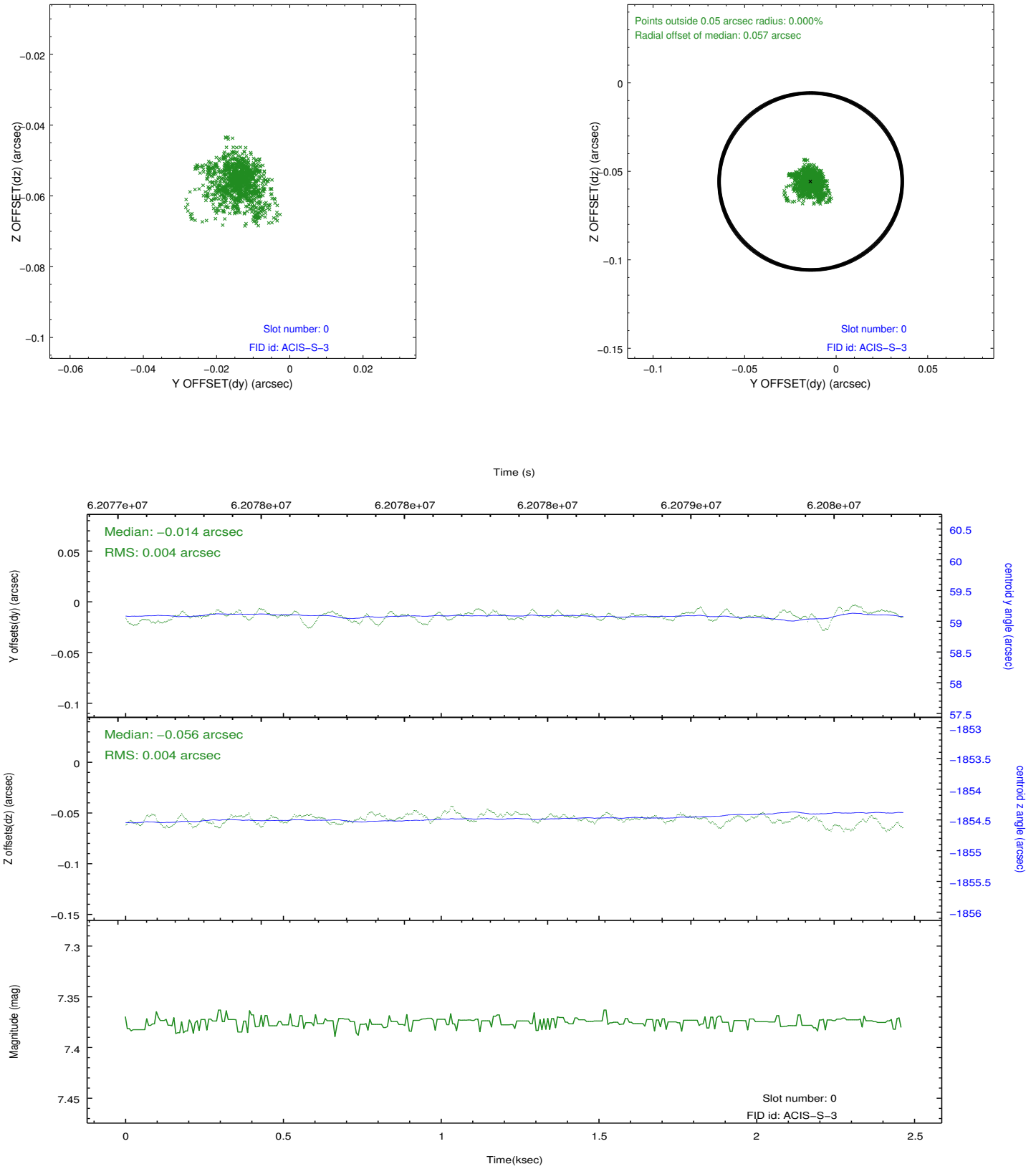


2.4.4 Slot 6

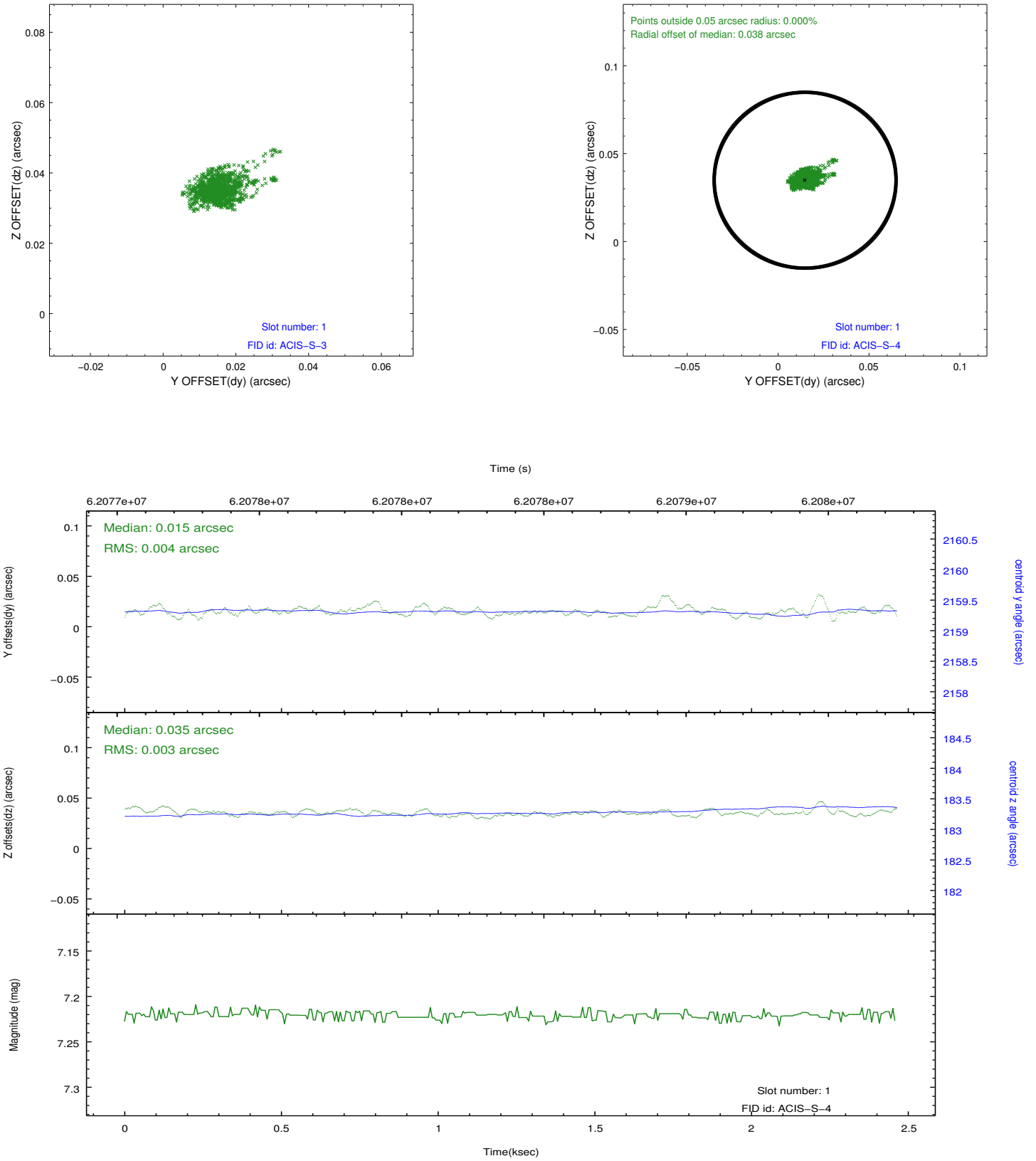


2.5 FID Slots

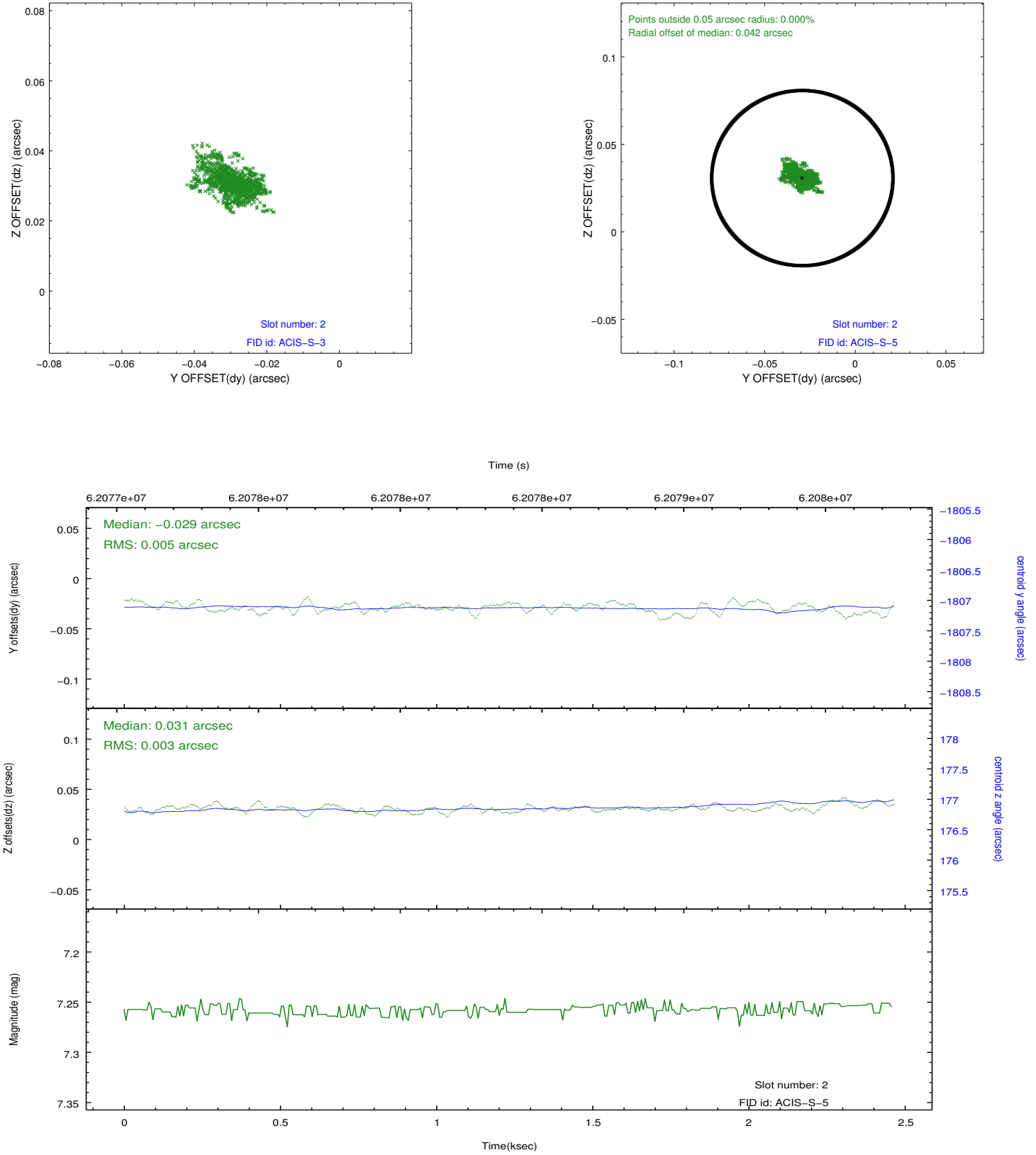
2.5.1 Slot 0



2.5.2 Slot 1



2.5.3 Slot 2



3 Point Sources

A Summary

A.1 Status

V&V Scientist	Beth Sundheim
V&V Date (YYYY-MM-DD)	2009.12.07
V&V Edition	1
V&V Disposition and Status	OK
V&V Charge Time	1.772

A.2 Comments

Focal plane temperature is warmer than -118.7 C degrees during the entire observation. This temperature is the upper limit of the verified ACIS calibration for the front-illuminated chips. The focal plane temperature is also warmer than -116.7 degrees C for the entire observation. This temperature is the upper limit of the verified ACIS calibration for the back-illuminated chips. The ACIS spectral response calibration is less accurate at these warmer temperatures than it is at -119.7 C. Users whose science objectives depend on the most accurate spectral response (ie: fitting line-rich spectra) may notice an effect. Users whose science objectives do not depend on the most accurate spectral response should not notice an effect.

==

Slot 7 was not utilized in this observation.