

# V&V Reference Report

## L2 ASCDS Version : 7.6.8

Observation 3839 - L2 Version 001  
Chandra X-Ray Center

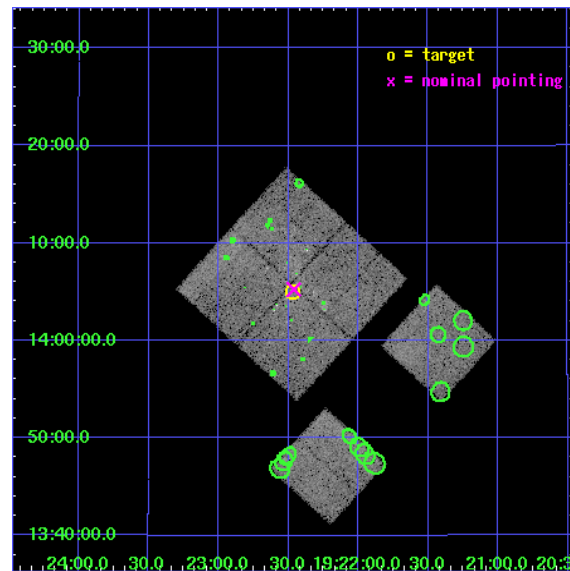
L2 Processing Date : Aug 3 2006

## Contents

<b>1</b>	<b>Front</b>	<b>2</b>
<b>2</b>	<b>OBI</b>	<b>3</b>
2.1	OBI . . . . .	3
2.1.1	Images . . . . .	3
2.1.2	Bias . . . . .	3
2.1.3	Parameters . . . . .	4
2.1.4	Events . . . . .	4
2.2	Compared Parameters . . . . .	5
2.3	Aspect . . . . .	6
2.4	Star Slots . . . . .	9
2.4.1	Slot 3 . . . . .	9
2.4.2	Slot 4 . . . . .	10
2.4.3	Slot 5 . . . . .	11
2.4.4	Slot 6 . . . . .	12
2.4.5	Slot 7 . . . . .	13
2.5	FID Slots . . . . .	14
2.5.1	Slot 0 . . . . .	14
2.5.2	Slot 1 . . . . .	15
2.5.3	Slot 2 . . . . .	16
<b>3</b>	<b>Point Sources</b>	<b>17</b>
<b>A</b>	<b>Summary</b>	<b>18</b>
A.1	Status . . . . .	18
A.2	Comments . . . . .	18

# 1 Front

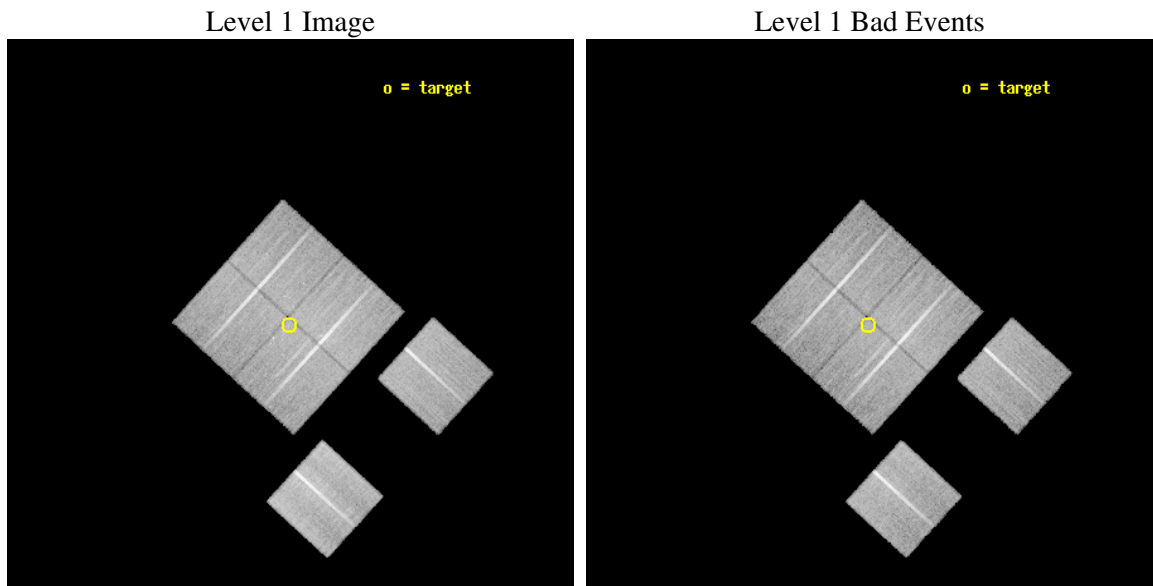
seq_num	500318
obs_id	3839
title	SUPERNOVA REMNANT(S) AND STAR-FORMING REGIONS IN THE W51 COMPLEX
observer	PROF. BON-CHUL KOO
object	W51B
dtcycle	0
cycle	P
ra_targ	290.616667
dec_targ	14.083333
ra_nom	290.61508033661
dec_nom	14.08768521384
roll_nom	132.36370410327
revision	2
ontime	29897.599888623
livetime	29519.01847666
ontime0	29897.599888623
ontime1	29897.599888623
ontime2	29897.599888623
ontime3	29897.599888623
ontime6	29897.599888623
ontime8	29897.599888623
l2events	96438



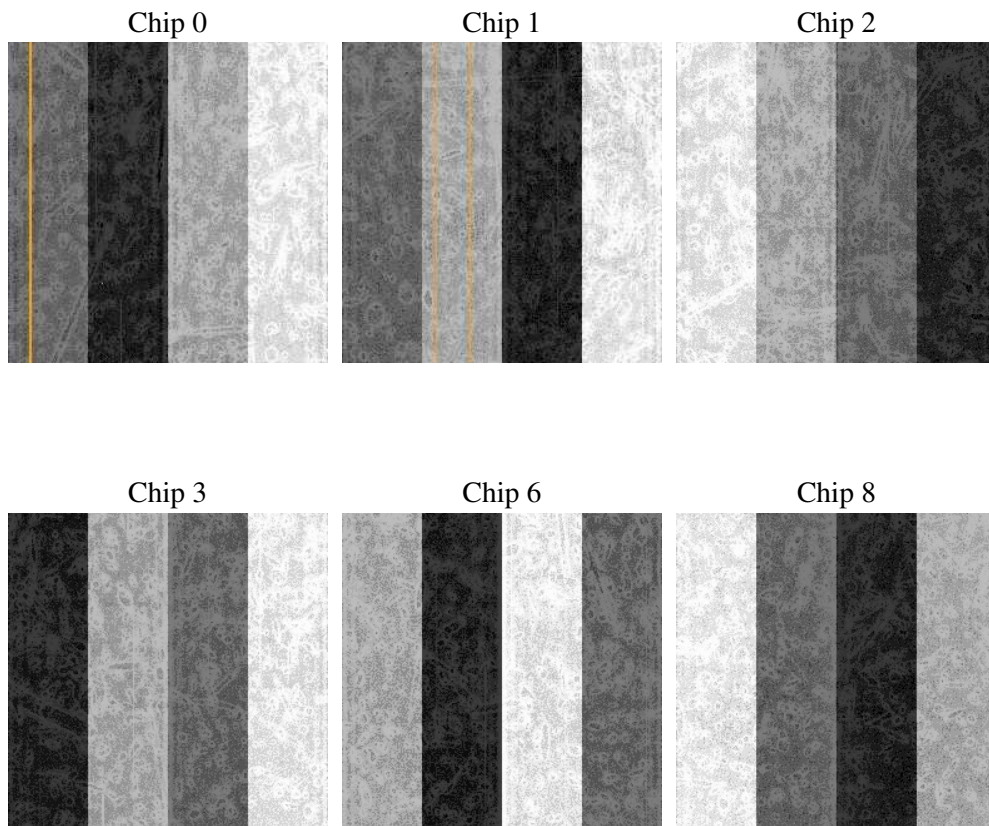
## 2 OBI

### 2.1 OBI

#### 2.1.1 Images



#### 2.1.2 Bias



### 2.1.3 Parameters

obi_num	1
ascdsver	7.6.8
caldsver	3.2.2
date	2006-08-03T07:44:40
revision	2

sched_exp_time	30000.000000
ontime	30160.811269343
ontime0	30160.811269343
ontime1	30160.811269343
ontime2	30160.811269343
ontime3	30160.811269343
ontime6	30160.811269343
ontime8	30160.811249435
l1events	943254

### 2.1.4 Events

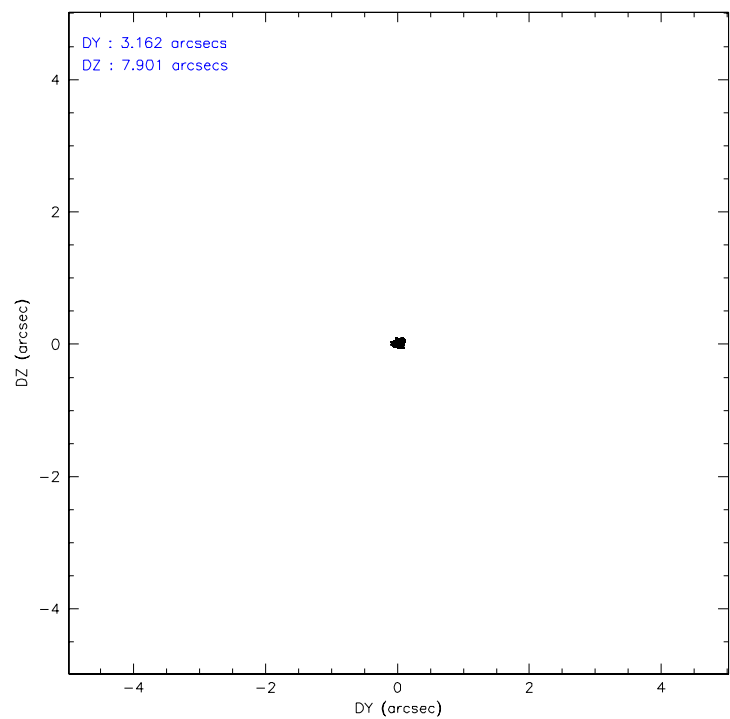
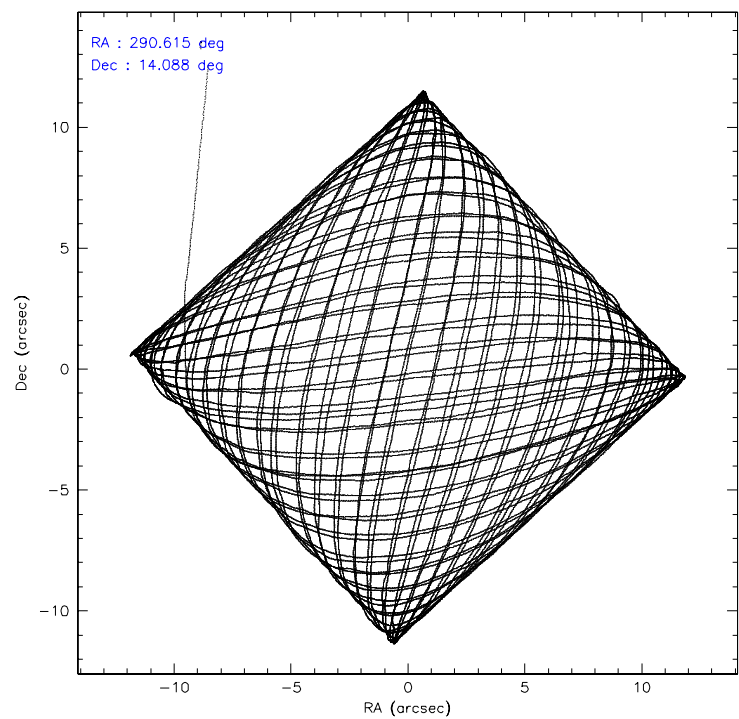
	ccd 0	ccd 1	ccd 2	ccd 3	ccd 6	ccd 8
level 1 events	142856	139149	164497	150645	151183	194924
rejected events	123180	119375	145670	133757	133373	152333
rejected %	86%	85%	88%	88%	88%	78%

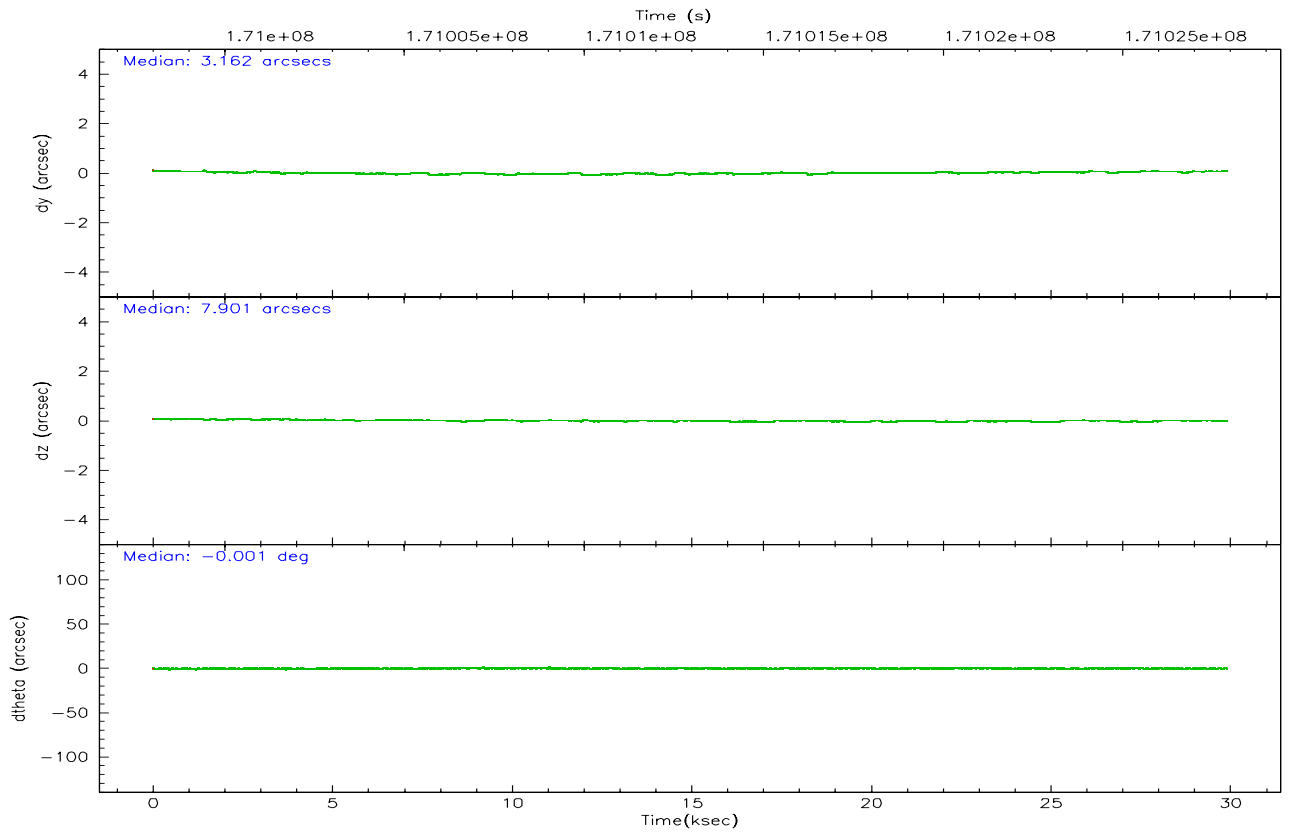
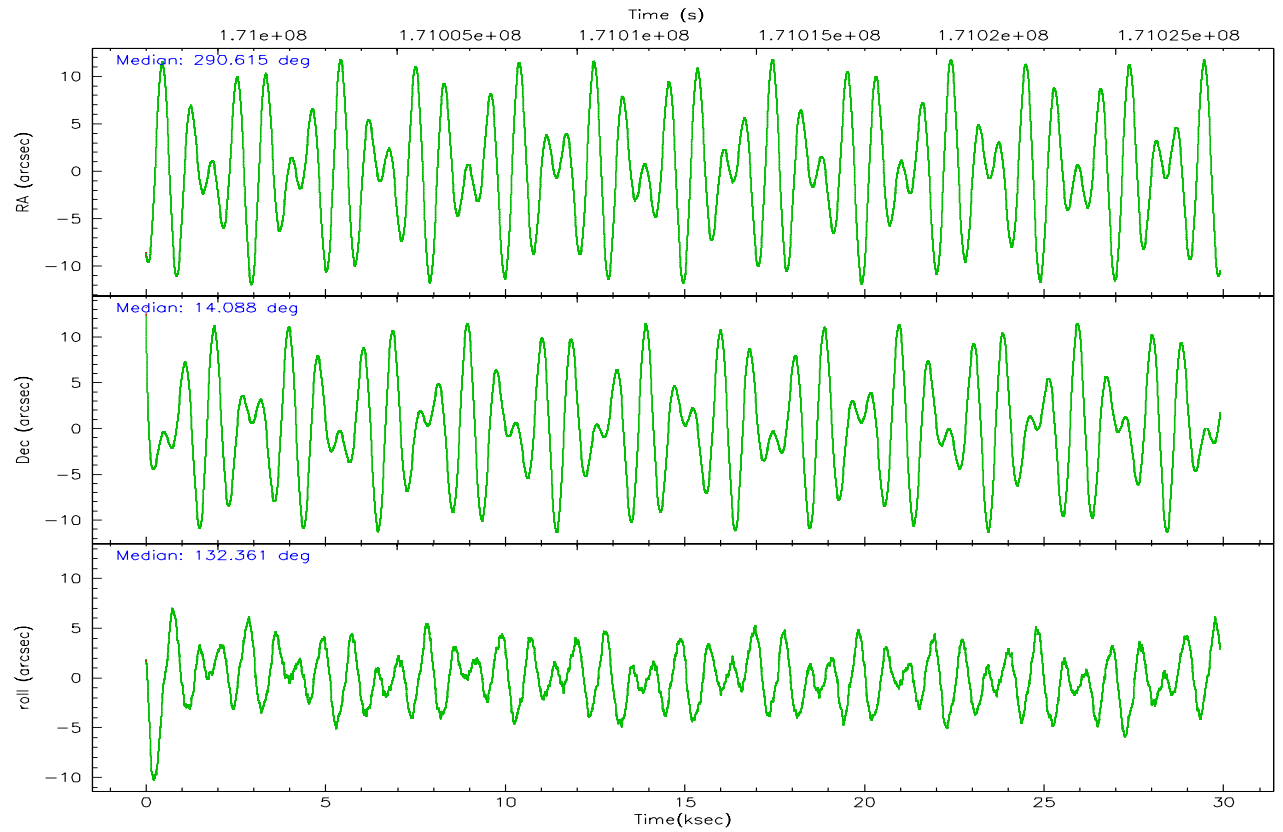
	ccd 0	ccd 1	ccd 2	ccd 3	ccd 6	ccd 8
grade 0 events	9072	9005	8647	7441	7424	13516
	6%	6%	5%	4%	4%	6%
grade 1 events	84	68	98	86	65	109
	0%	0%	0%	0%	0%	0%
grade 2 events	4076	3750	3842	3272	3574	9257
	2%	2%	2%	2%	2%	4%
grade 3 events	1903	1940	1785	1771	1821	4800
	1%	1%	1%	1%	1%	2%
grade 4 events	1727	1972	1781	1744	1809	4358
	1%	1%	1%	1%	1%	2%
grade 5 events	5167	5545	4901	5859	5879	8542
	3%	3%	2%	3%	3%	4%
grade 6 events	3040	3315	2901	2815	3331	11076
	2%	2%	1%	1%	2%	5%
grade 7 events	117787	113554	140542	127657	127280	143266
	82%	81%	85%	84%	84%	73%

## 2.2 Compared Parameters

Parameter	Planned	Actual	Parameter	Planned	Actual
Instrument	ACIS	ACIS	Obspar format version number	6	6
Detector	ACIS-012368	ACIS-012368	Obspar file type	PREDICTED	ACTUAL
Grating	NONE	NONE	Obspar update status	NONE	UPDATED
Data mode	VFAINT	VFAINT	On-chip summing requested	N	N
Observation mode	POINTING	POINTING	Subarray requested	NONE	NONE
Pointing RA	290.642018	290.6150803366081	Alternating exposures requested	N	N
Pointing Dec	14.079511	14.08768521383952	Primary exposure time	0.000000	3.2
Pointing Roll	132.148458	132.3637041032658			
SIM focus pos (mm)	-0.782348	-0.7809083437167272			
SIM defocus (mm)	0	0.001439871863259334			
SIM translation stage pos (mm)	-233.592463	-233.5874344608287			
SIM translation stage offset (mm)	0	-0.005018542100998502			
Observation start time	170998186.184000	170996993.58708			
Observation start date	2003-06-03T03:28:42	2003-06-03T03:09:53			
Observation end time	171028186.184000	171028555.38842			
Observation end date	2003-06-03T11:48:42	2003-06-03T11:55:55			
Read mode	TIMED	TIMED			

## 2.3 Aspect





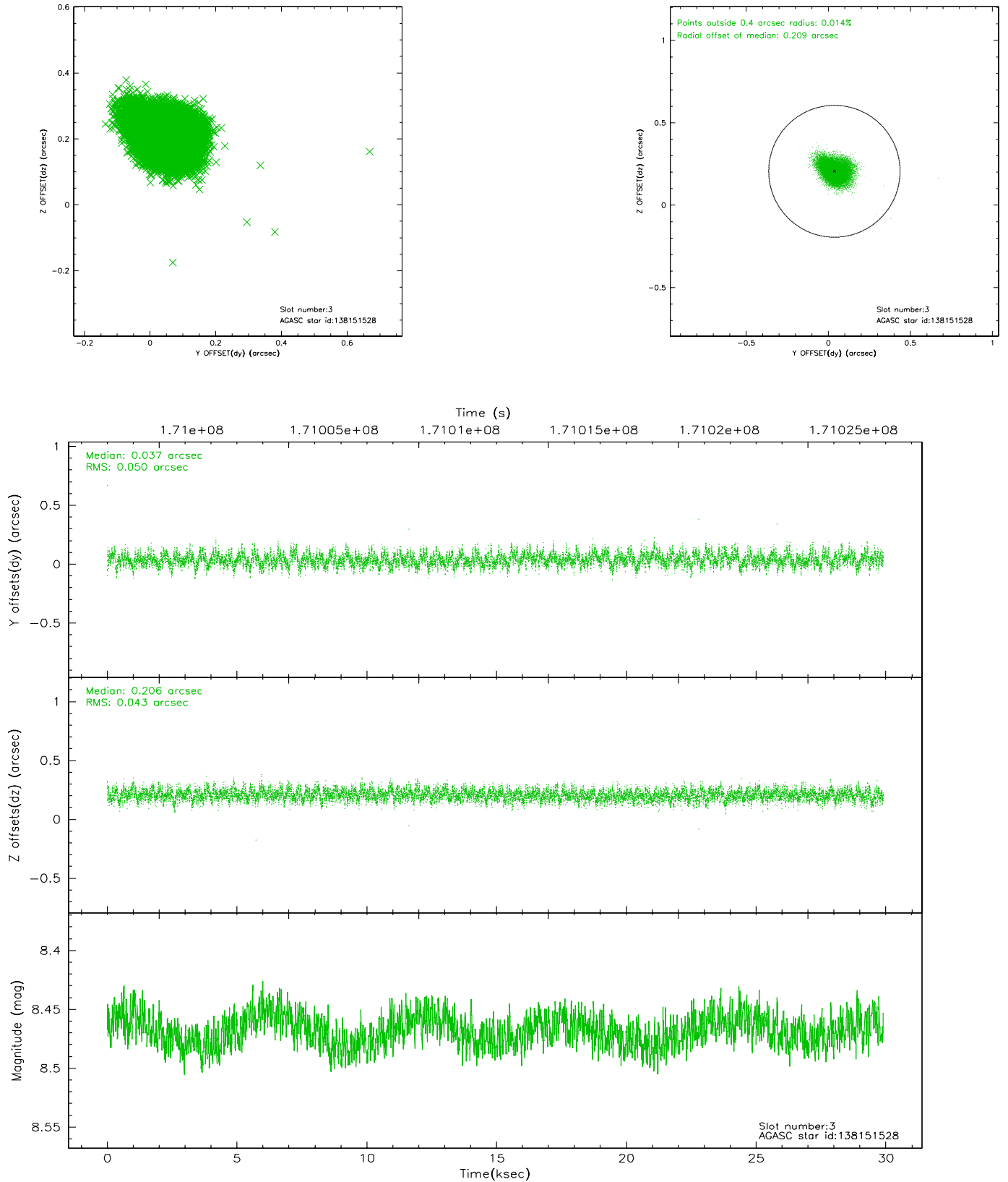
### Slot Statistics

slot	status	id	mag	n_pts	med_dy	med_dz	dr1	dr2	ra	dec	mean_y	mean_z
0	FID	ACIS-I-1	7.24	7295	-0.006	0.053	0.007	0.012	0.000000	0.000000	936.60	-831.28
1	FID	ACIS-I-5	7.24	7294	-0.076	0.047	0.006	0.011	0.000000	0.000000	-1811.51	1066.19
2	FID	ACIS-I-6	7.26	7294	-0.010	-0.030	0.007	0.011	0.000000	0.000000	402.09	1710.68
3	GUIDE	138151528	8.47	14587	0.037	0.206	0.070	0.116	290.837831	14.713020	1233.74	-2035.72
4	GUIDE	138153440	7.67	14587	-0.135	-0.076	0.049	0.079	289.820856	14.177576	2188.71	1884.85
5	GUIDE	138155968	9.11	14582	0.109	0.002	0.096	0.156	290.713024	13.375477	-2045.83	1516.64
6	GUIDE	138156640	6.98	14589	-0.273	-0.070	0.042	0.067	290.170188	14.419089	2011.11	398.53
7	GUIDE	138161256	9.29	14584	0.261	-0.057	0.107	0.176	290.800162	13.338467	-2349.21	1379.44

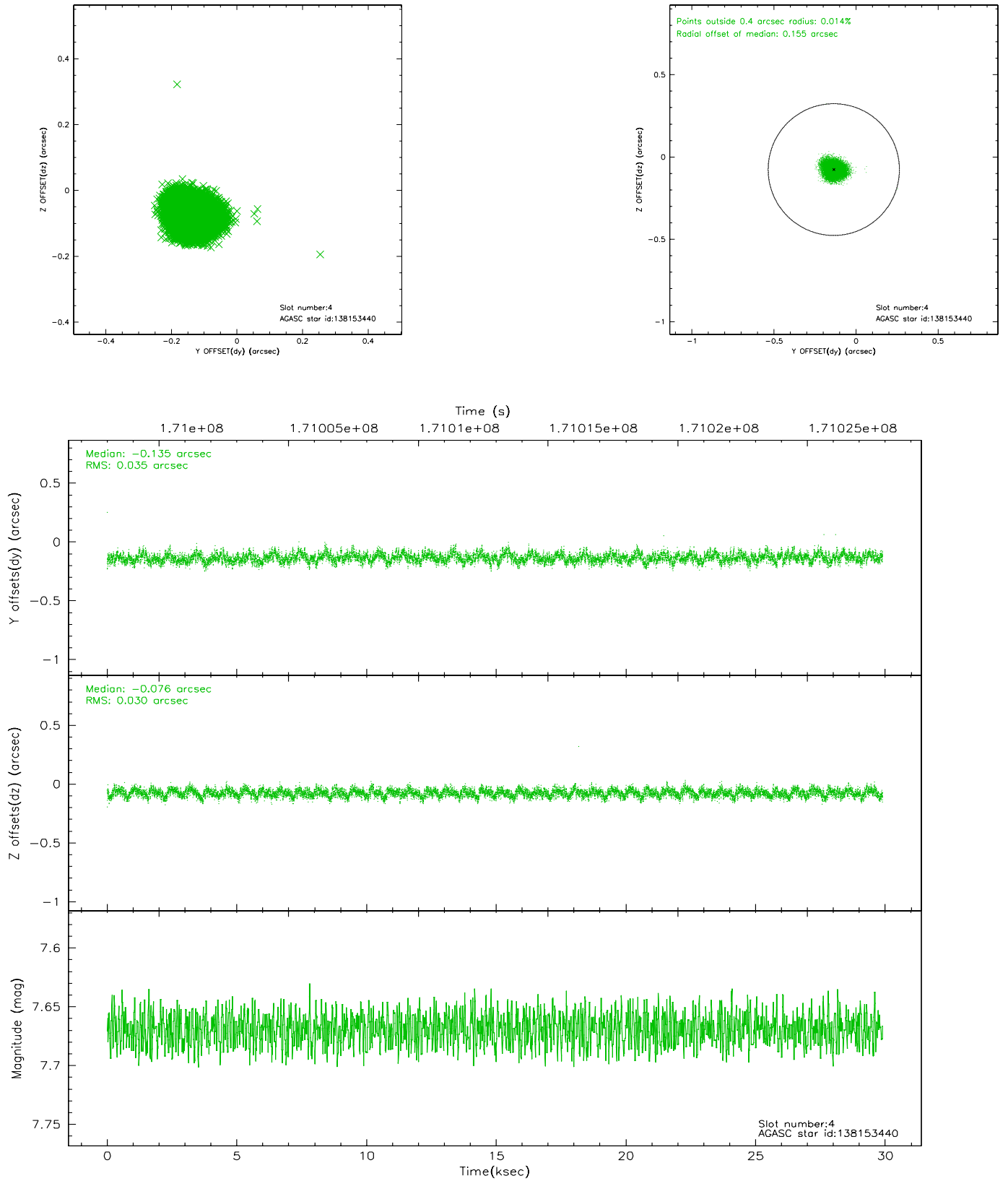


## 2.4 Star Slots

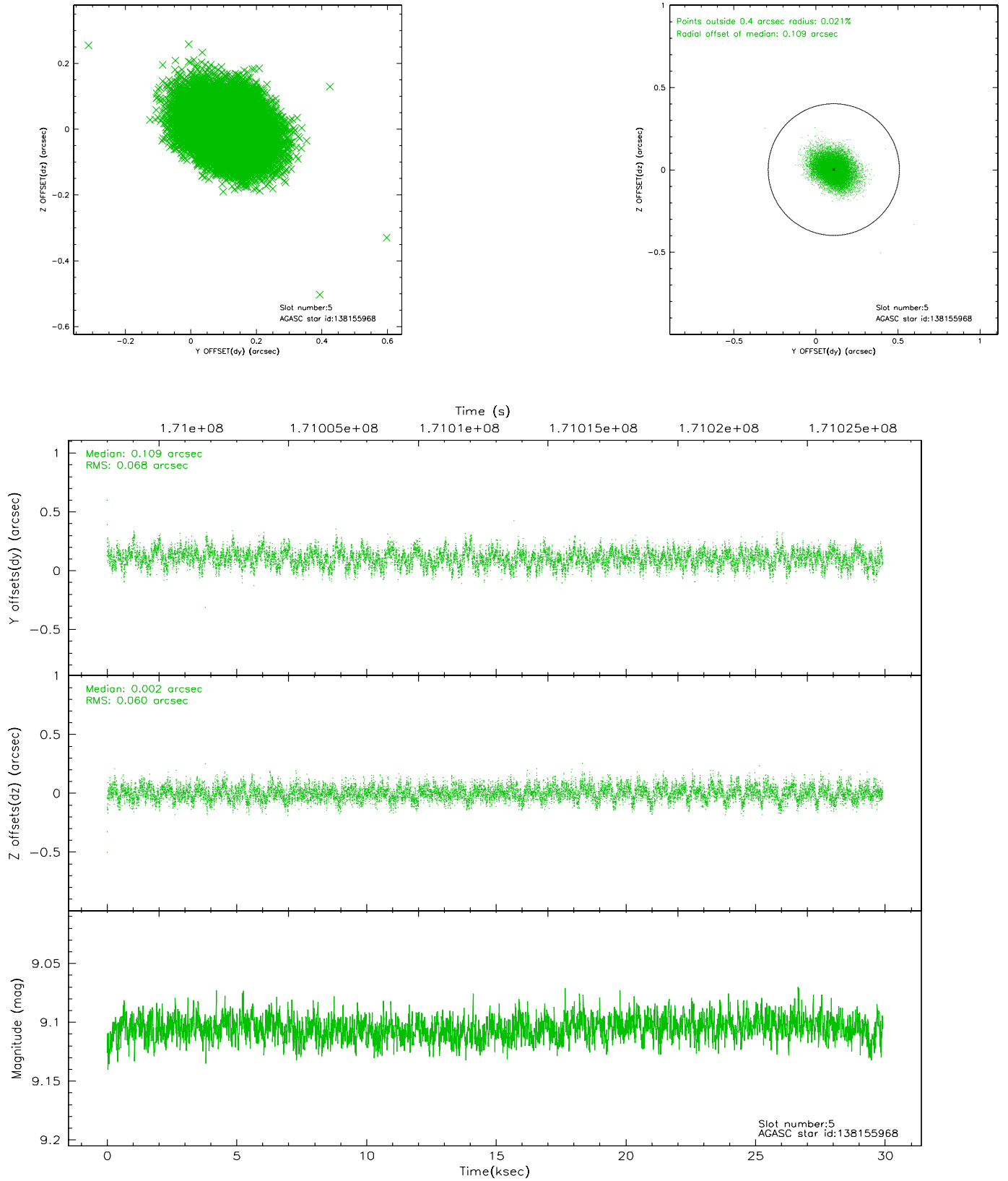
### 2.4.1 Slot 3



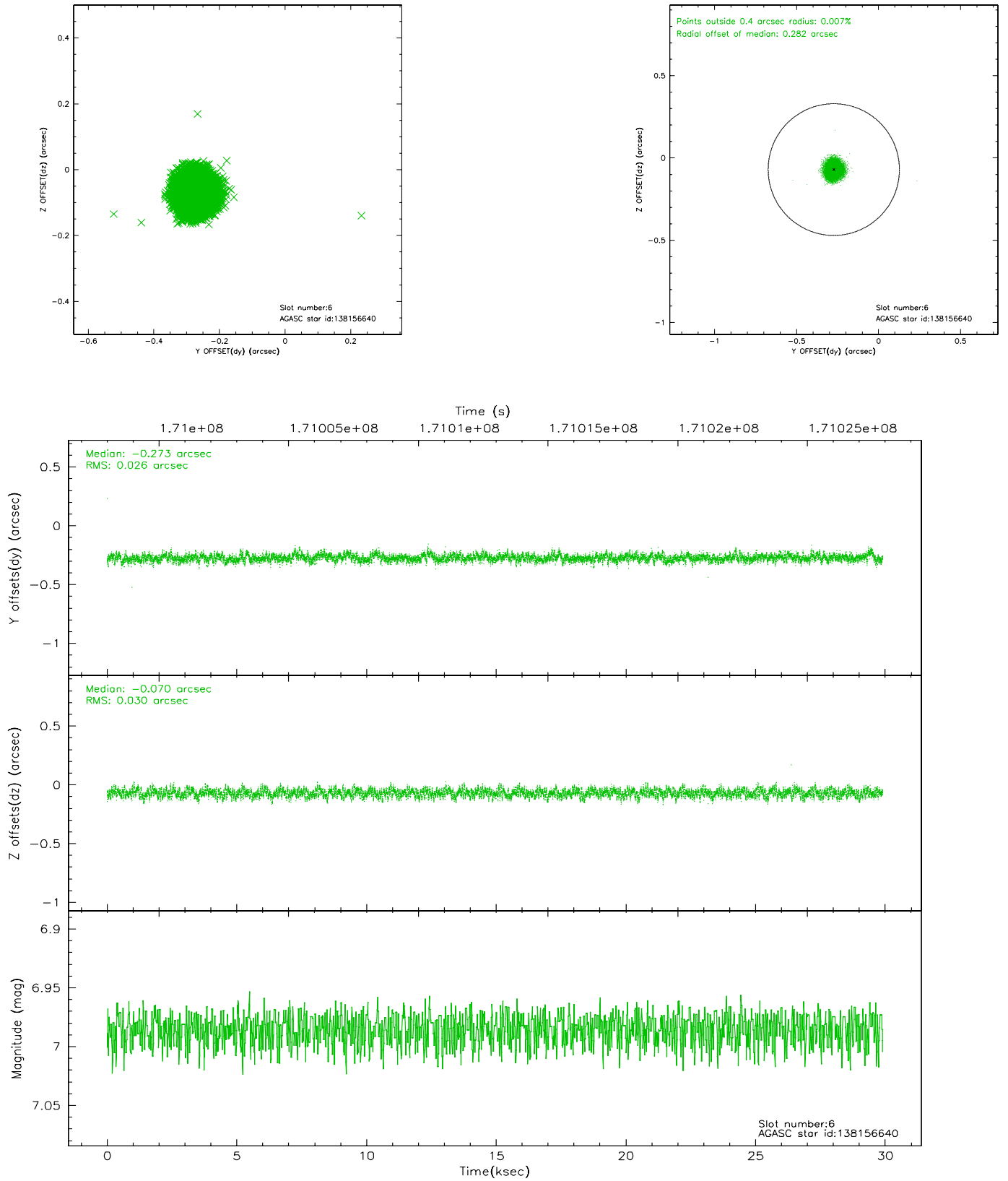
## 2.4.2 Slot 4



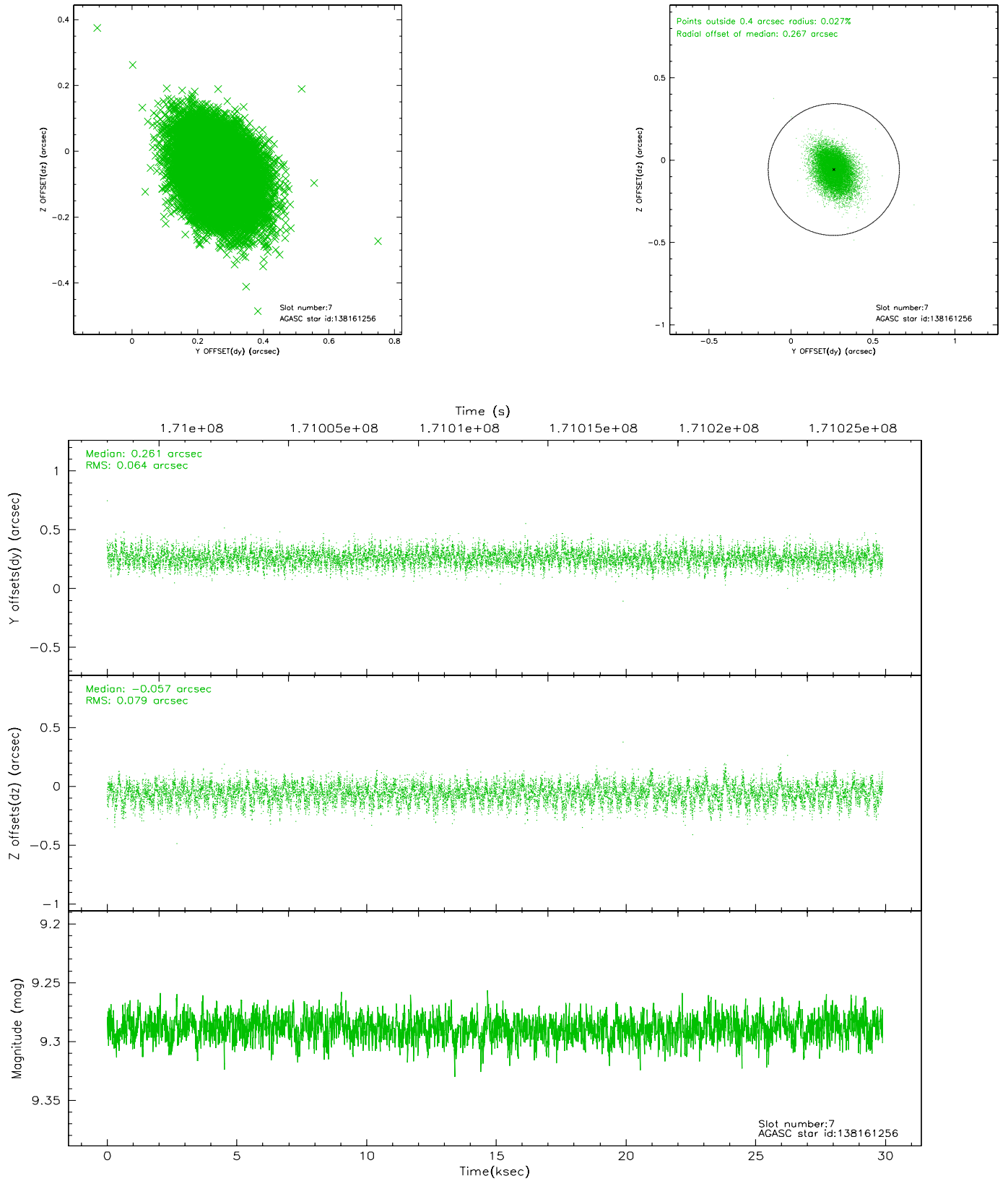
### 2.4.3 Slot 5



## 2.4.4 Slot 6

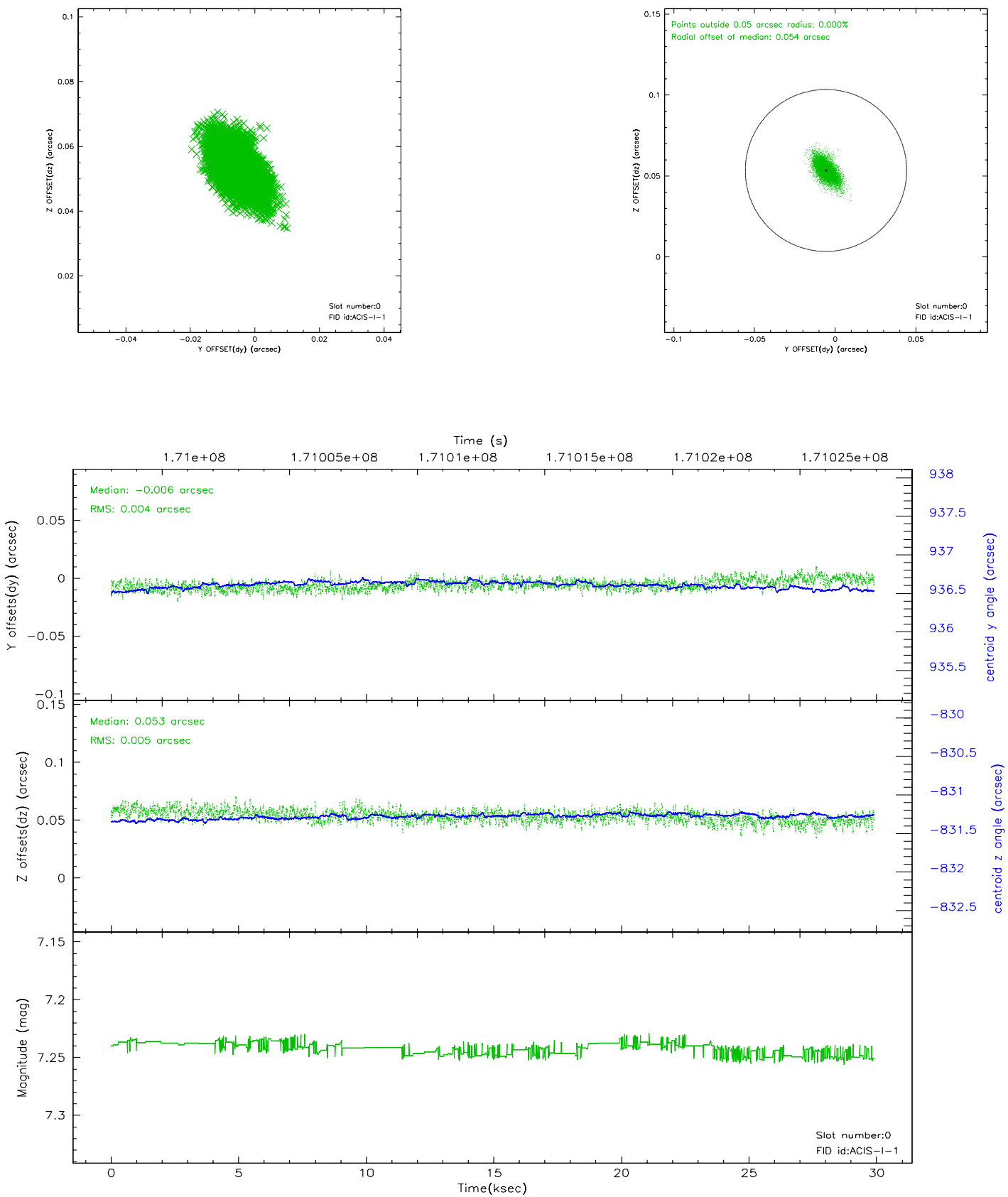


## 2.4.5 Slot 7

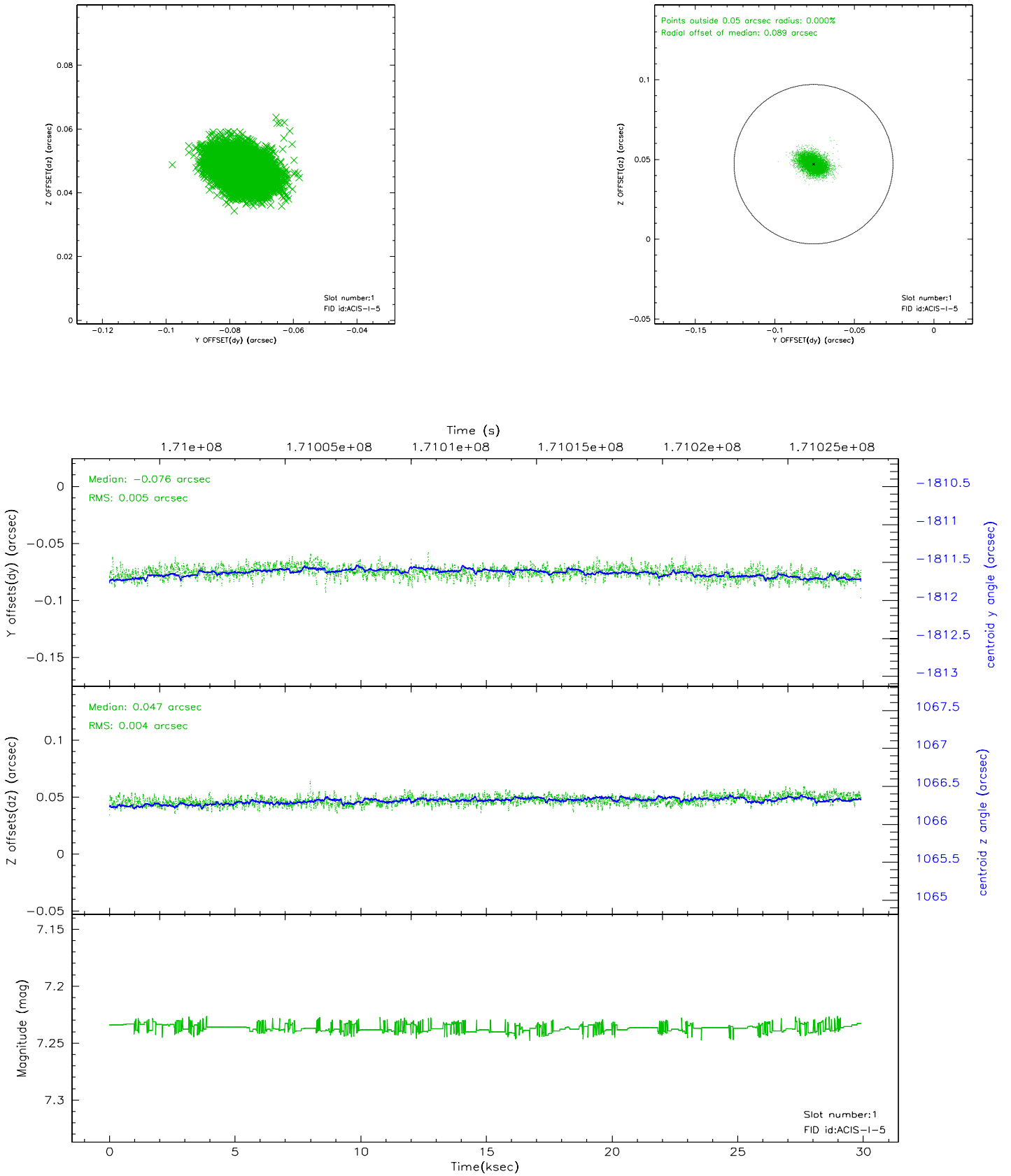


## 2.5 FID Slots

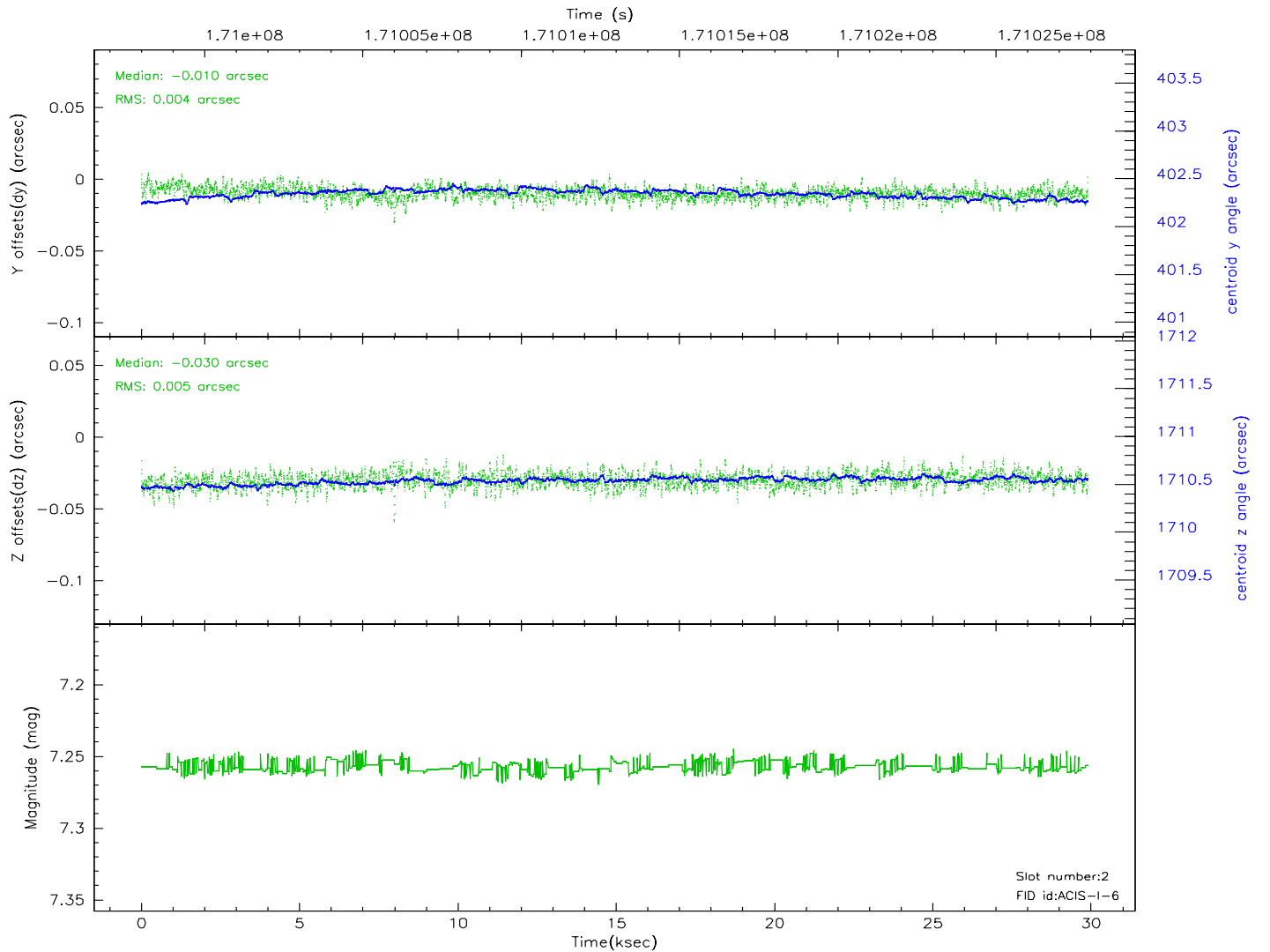
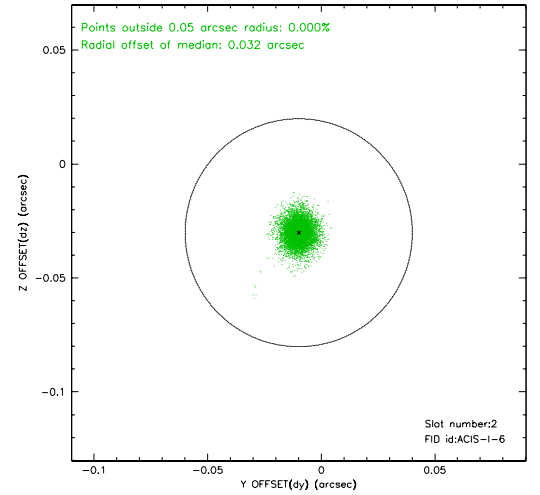
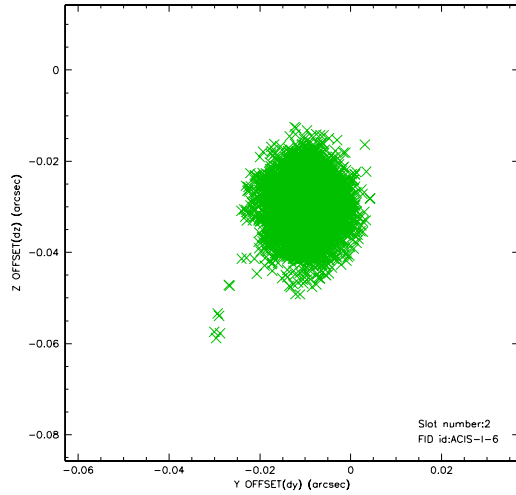
### 2.5.1 Slot 0



## 2.5.2 Slot 1

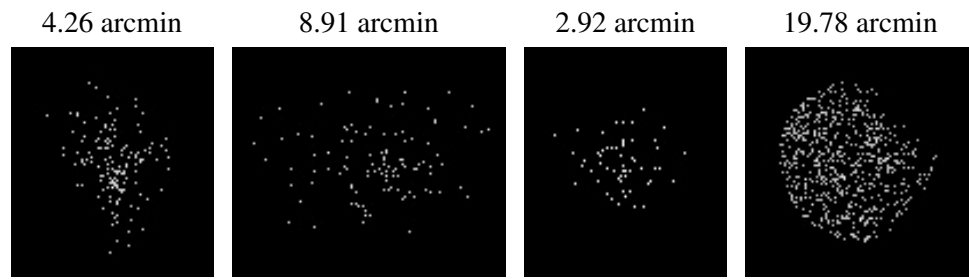


### 2.5.3 Slot 2





### 3 Point Sources



## A Summary

### A.1 Status

V&V Scientist	Beth Sundheim
V&V Date (YYYY-MM-DD)	2006.08.03
V&V Edition	1
V&V Disposition and Status	OK
V&V Charge Time	29.897

### A.2 Comments