

V&V Reference Report

L2 ASCDS Version : 7.6.8

Observation 3519 - L2 Version 001
Chandra X-Ray Center

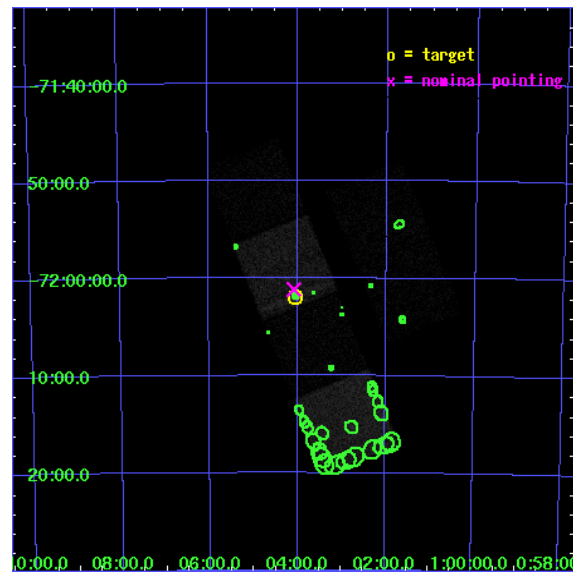
L2 Processing Date : Jul 20 2006

Contents

1	Front	2
2	OBI	3
2.1	OBI	3
2.1.1	Images	3
2.1.2	Bias	3
2.1.3	Parameters	4
2.1.4	Events	4
2.2	Compared Parameters	5
2.3	Aspect	6
2.4	Star Slots	9
2.4.1	Slot 3	9
2.4.2	Slot 4	10
2.4.3	Slot 5	11
2.4.4	Slot 6	12
2.4.5	Slot 7	13
2.5	FID Slots	14
2.5.1	Slot 0	14
2.5.2	Slot 1	15
2.5.3	Slot 2	16
3	Point Sources	17
A	Summary	18
A.1	Status	18
A.2	Comments	18

1 Front

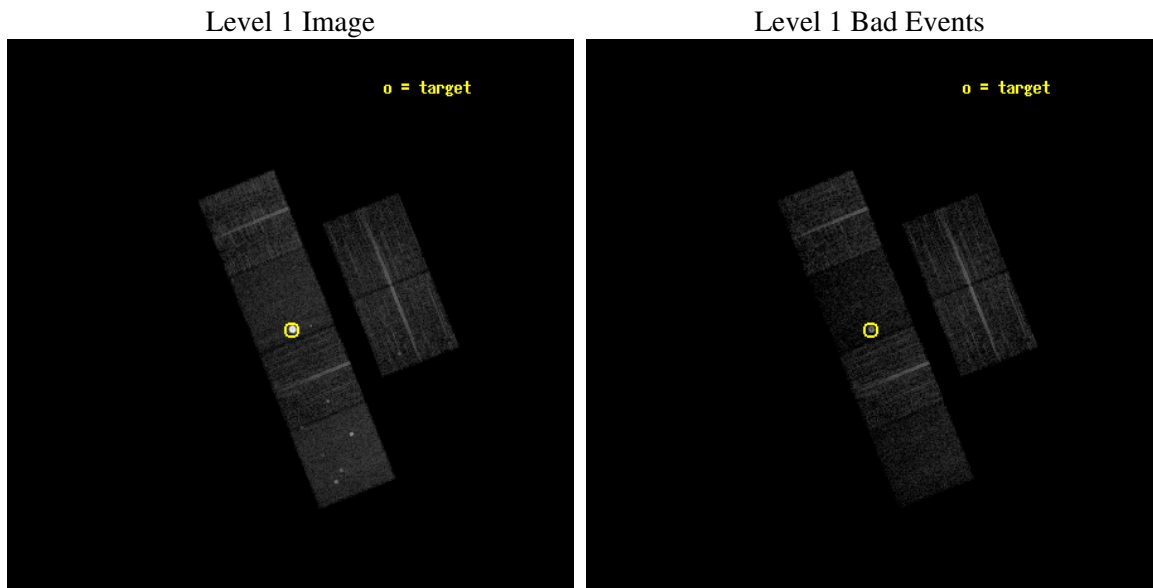
seq_num	590274
obs_id	3519
title	AO4A ACIS-S CALIBRATION OBSERVATIONS OF E0102-72
observer	Dr. CXC Calibration
object	E0102-72[S3,-120,1,0,0]
dtcycle	0
cycle	P
ra_targ	16.01
dec_targ	-72.032028
ra_nom	16.020472106974
dec_nom	-72.019676221042
roll_nom	248.19095632408
revision	2
ontime	8111.9999697804
livetime	8009.2809417031
ontime2	8111.9999697804
ontime3	8111.9999697804
ontime5	8111.9999697804
ontime6	8111.9999697804
ontime7	8111.9999697804
ontime8	8108.7590095401
l2events	114905



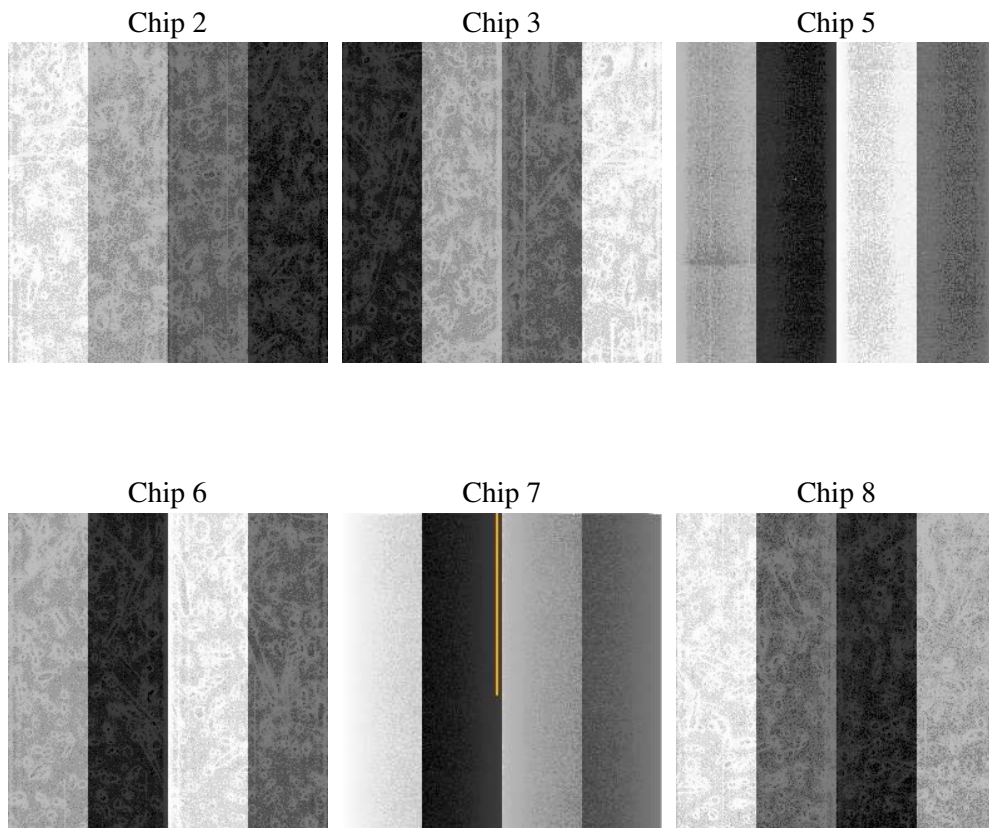
2 OBI

2.1 OBI

2.1.1 Images



2.1.2 Bias



2.1.3 Parameters

obi_num	0
ascdsver	7.6.8
caldsver	3.2.2
date	2006-07-20T13:21:06
revision	2

sched_exp_time	7973.000000
ontime	8177.0445333719
ontime2	8177.0445333719
ontime3	8177.0445333719
ontime5	8177.0445333719
ontime6	8177.0445333719
ontime7	8177.0445333719
ontime8	8177.0445832014
l1events	328886

2.1.4 Events

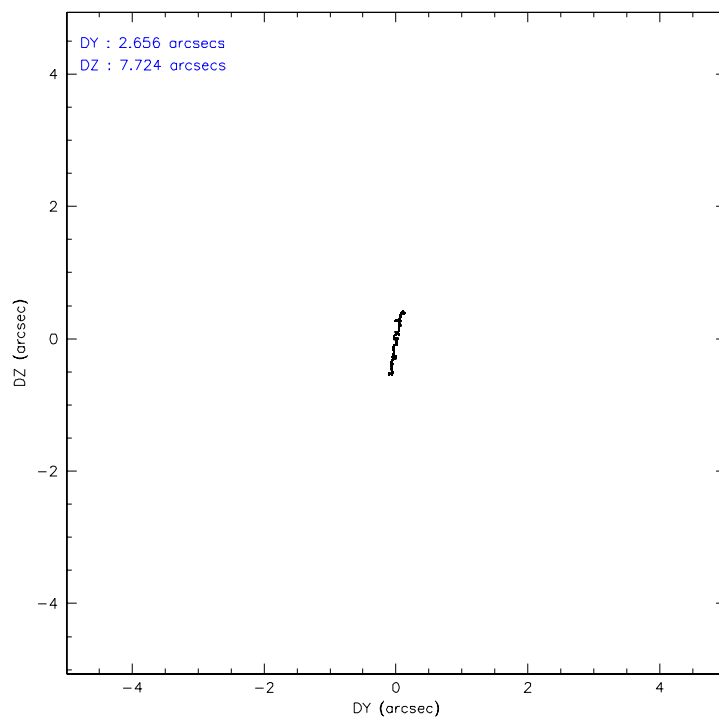
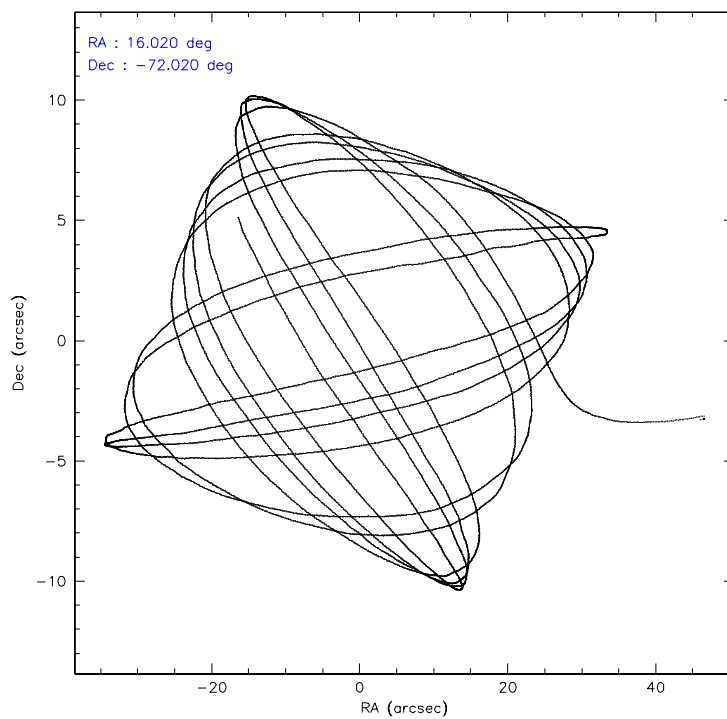
	ccd 2	ccd 3	ccd 5	ccd 6	ccd 7	ccd 8
level 1 events	45861	39869	50378	42655	100305	49818
rejected events	41617	36037	24051	37622	23184	38879
rejected %	90%	90%	47%	88%	23%	78%

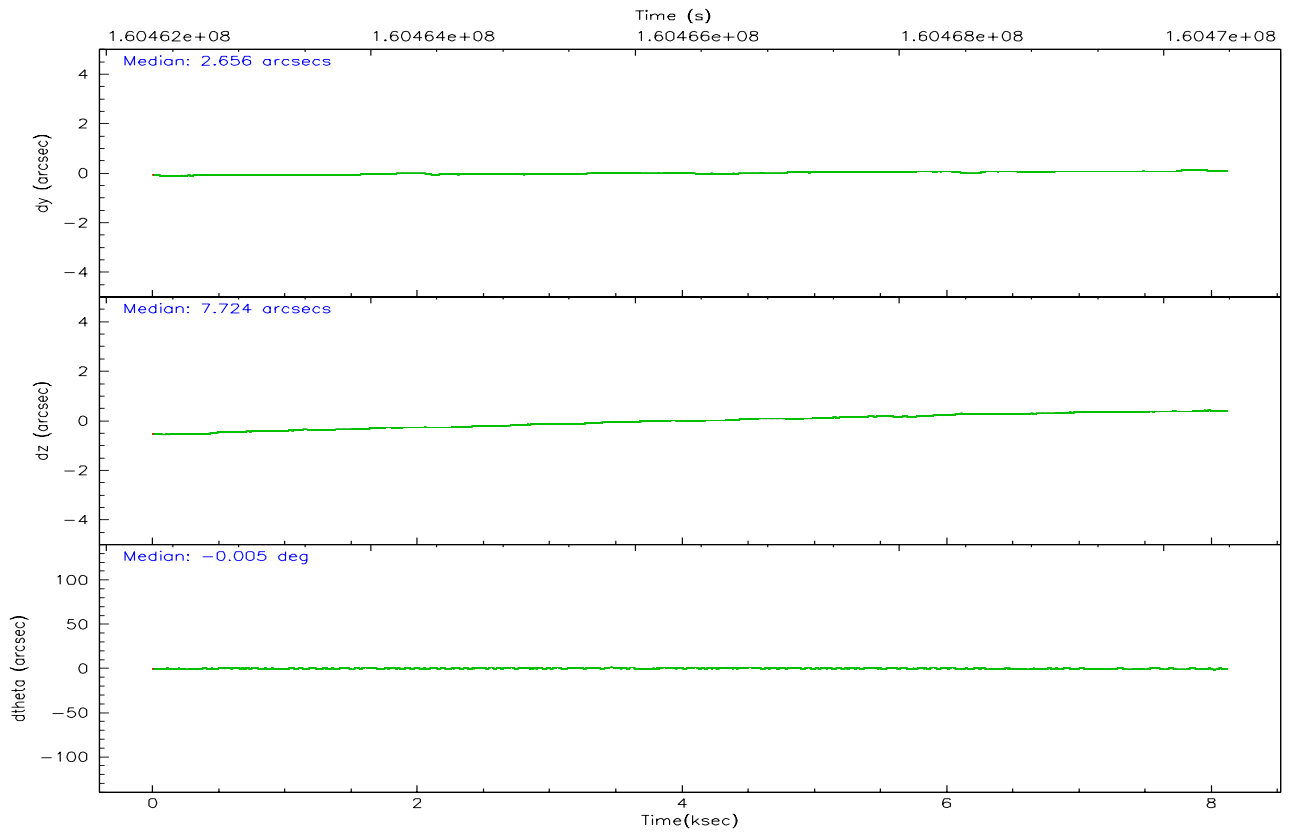
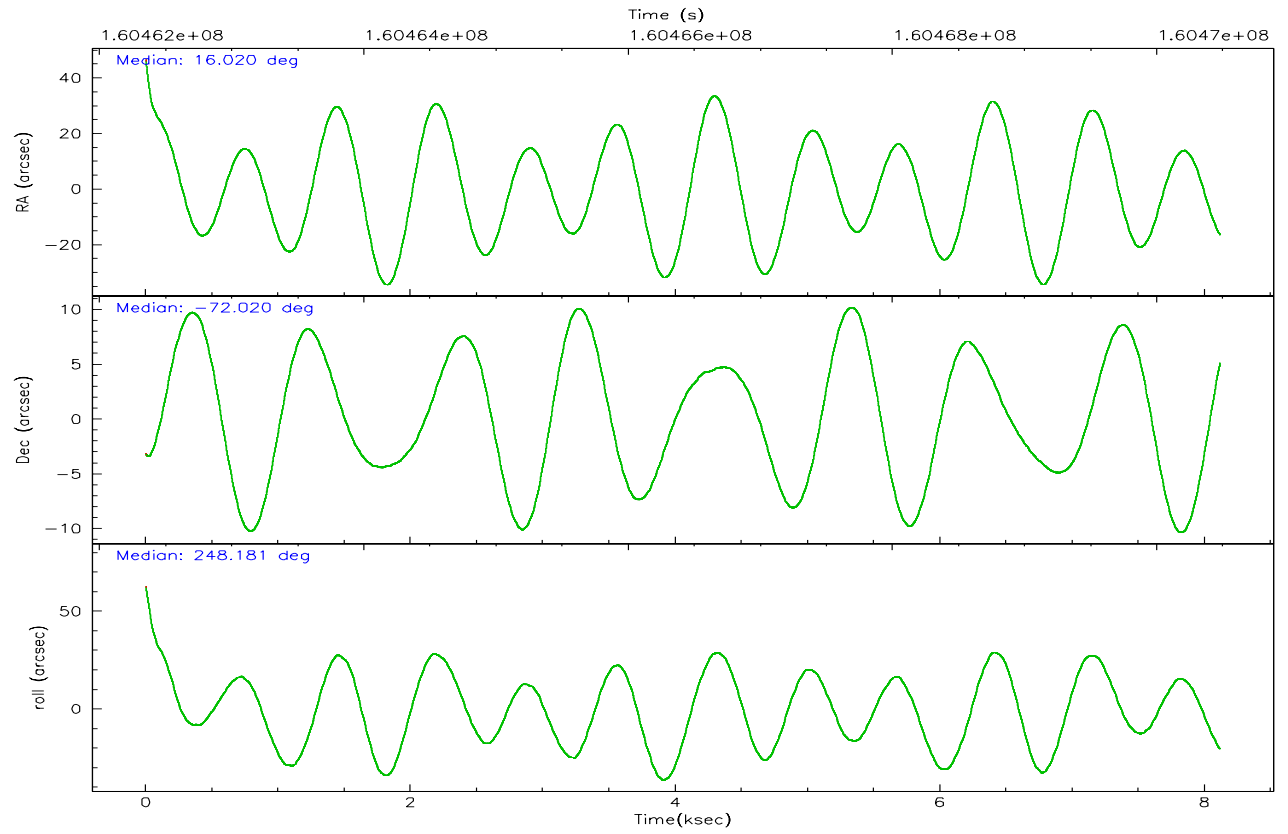
	ccd 2	ccd 3	ccd 5	ccd 6	ccd 7	ccd 8
grade 0 events	1776	1537	3343	2369	18603	2996
	3%	3%	6%	5%	18%	6%
grade 1 events	28	19	67	18	332	41
	0%	0%	0%	0%	0%	0%
grade 2 events	945	775	8342	921	22245	2557
	2%	1%	16%	2%	22%	5%
grade 3 events	466	407	724	480	8452	1276
	1%	1%	1%	1%	8%	2%
grade 4 events	453	439	670	499	8184	1211
	0%	1%	1%	1%	8%	2%
grade 5 events	1127	1325	2707	1327	4170	1894
	2%	3%	5%	3%	4%	3%
grade 6 events	641	700	13446	823	20297	3003
	1%	1%	26%	1%	20%	6%
grade 7 events	40425	34667	21079	36218	18022	36840
	88%	86%	41%	84%	17%	73%

2.2 Compared Parameters

Parameter	Planned	Actual	Parameter	Planned	Actual
Instrument	ACIS	ACIS	Obspar format version number	6	6
Detector	ACIS-235678	ACIS-235678	Obspar file type	PREDICTED	ACTUAL
Grating	NONE	NONE	Obspar update status	NONE	UPDATED
Data mode	VFAINT	VFAINT	On-chip summing requested	N	N
Observation mode	POINTING	POINTING	Subarray requested	NONE	NONE
Pointing RA	16.006582	16.02047210697405	Alternating exposures requested	N	N
Pointing Dec	-71.992772	-72.01967622104152	Primary exposure time	0.000000	3.2
Pointing Roll	248.021098	248.1909563240793			
Window start time	158976064.184000	158976064.184000			
Window stop time	161654464.184000	161654464.184000			
SIM focus pos (mm)	-0.684267	-0.6828225247311905			
SIM defocus (mm)	0	0.001444936568705701			
SIM translation stage pos (mm)	-190.132523	-190.1425803651734			
SIM translation stage offset (mm)	0	0.01005778216563158			
Observation start time	160462501.184000	160461420.9676			
Observation start date	2003-02-01T04:53:57	2003-02-01T04:37:00			
Observation end time	160470474.184000	160470608.04298			
Observation end date	2003-02-01T07:06:50	2003-02-01T07:10:08			
Read mode	TIMED	TIMED			

2.3 Aspect



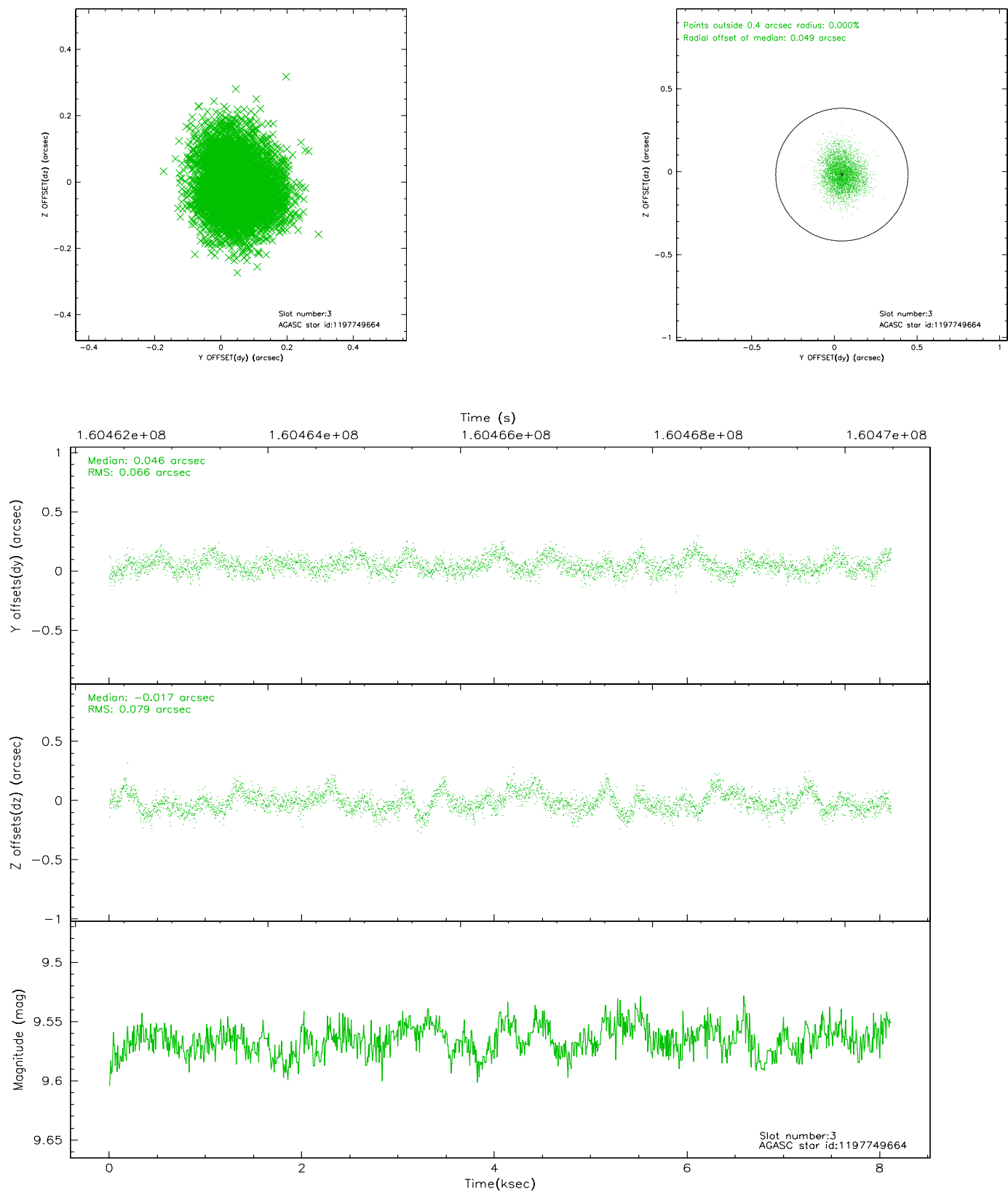


Slot Statistics

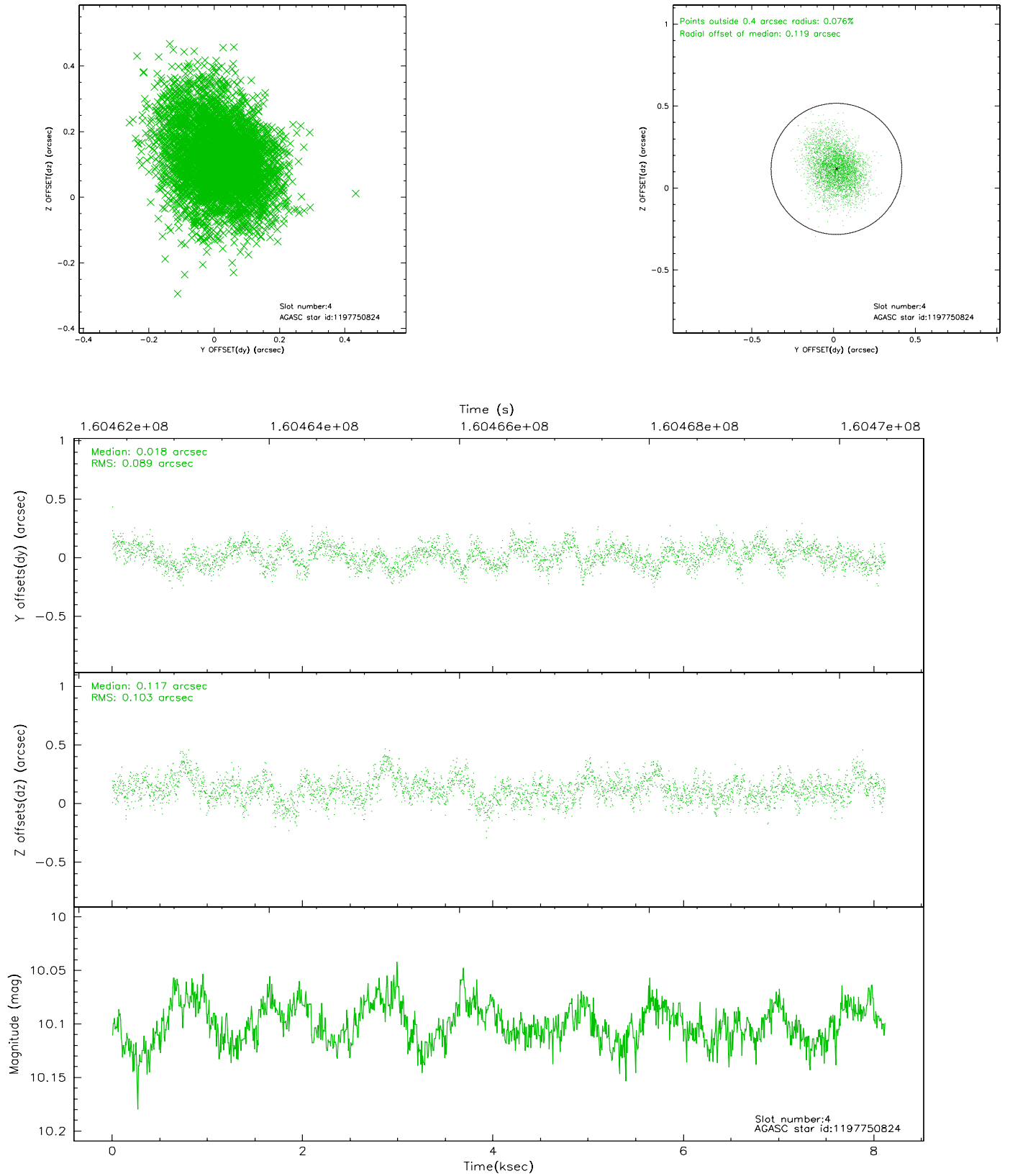
slot	status	id	mag	n_pts	med_dy	med_dz	dr1	dr2	ra	dec	mean_y	mean_z
0	FID	ACIS-S-1	7.19	1981	0.023	-0.008	0.014	0.021	0.000000	0.000000	940.74	-1724.49
1	FID	ACIS-S-5	7.24	1980	0.006	0.040	0.007	0.011	0.000000	0.000000	-1807.85	172.45
2	FID	ACIS-S-6	7.35	1981	-0.050	-0.021	0.016	0.025	0.000000	0.000000	405.52	817.09
3	GUIDE	1197749664	9.57	3956	0.046	-0.017	0.110	0.179	15.809015	-72.366369	1328.37	304.21
4	GUIDE	1197750824	10.10	3956	0.018	0.117	0.144	0.239	14.791487	-71.393477	-1464.37	-2096.25
5	GUIDE	1197884536	8.50	3961	-0.072	0.012	0.072	0.114	17.160729	-71.835289	-999.36	993.11
6	GUIDE	1197750936	7.56	3961	0.025	-0.018	0.077	0.120	15.387940	-71.549550	-1212.15	-1249.09
7	GUIDE	1197885104	9.38	3956	-0.026	-0.100	0.101	0.164	17.845067	-72.189368	-72.83	2153.24

2.4 Star Slots

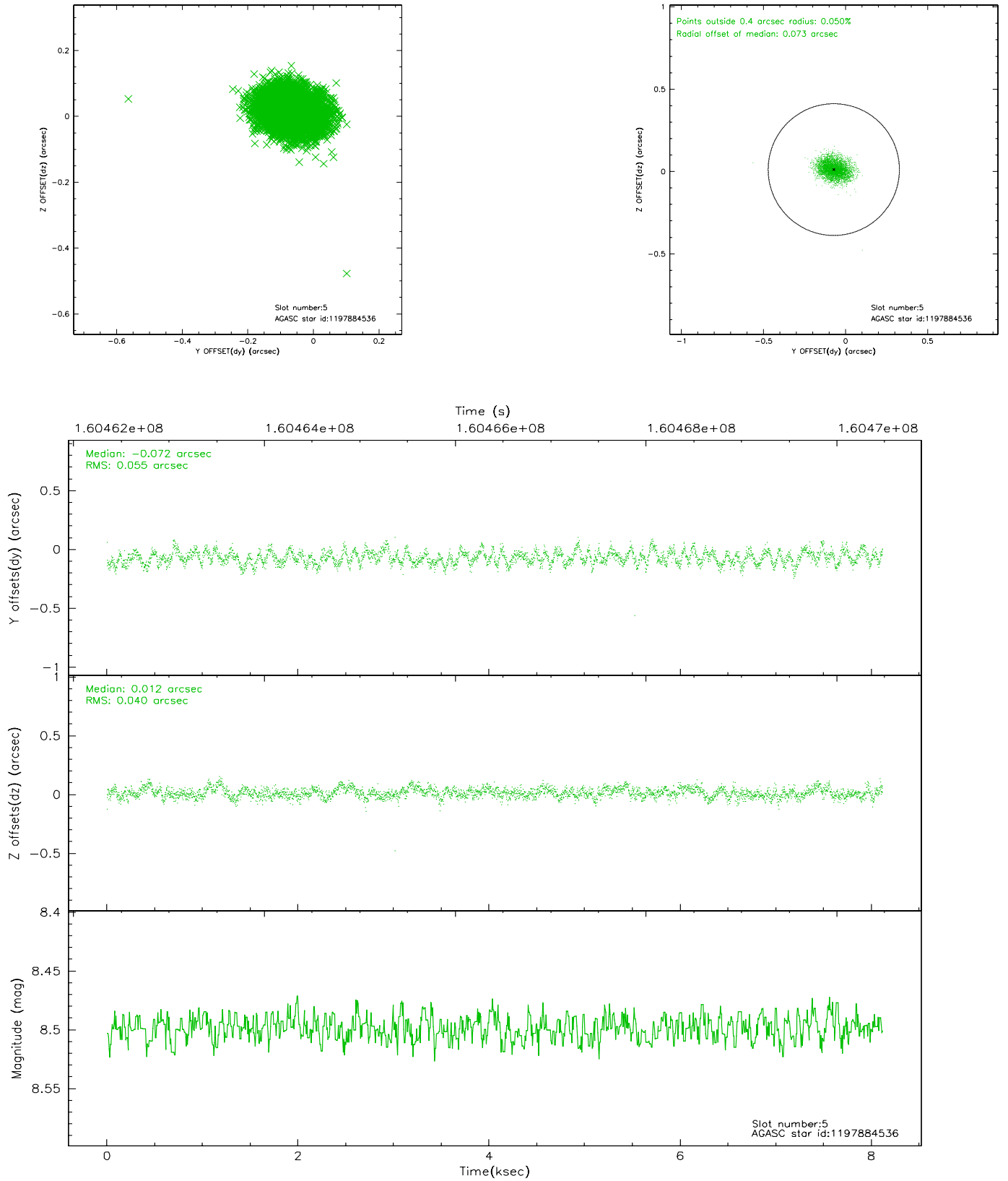
2.4.1 Slot 3



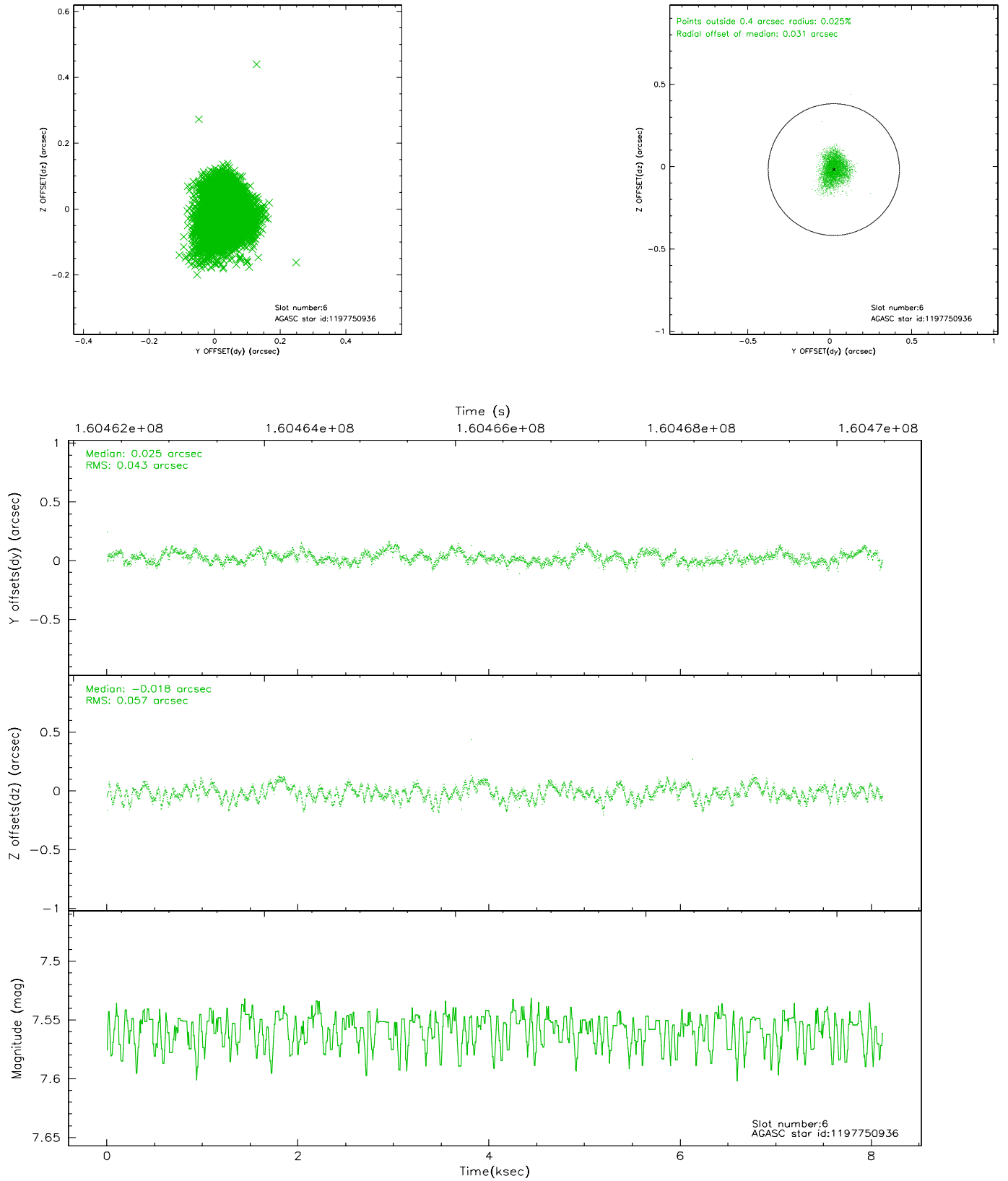
2.4.2 Slot 4



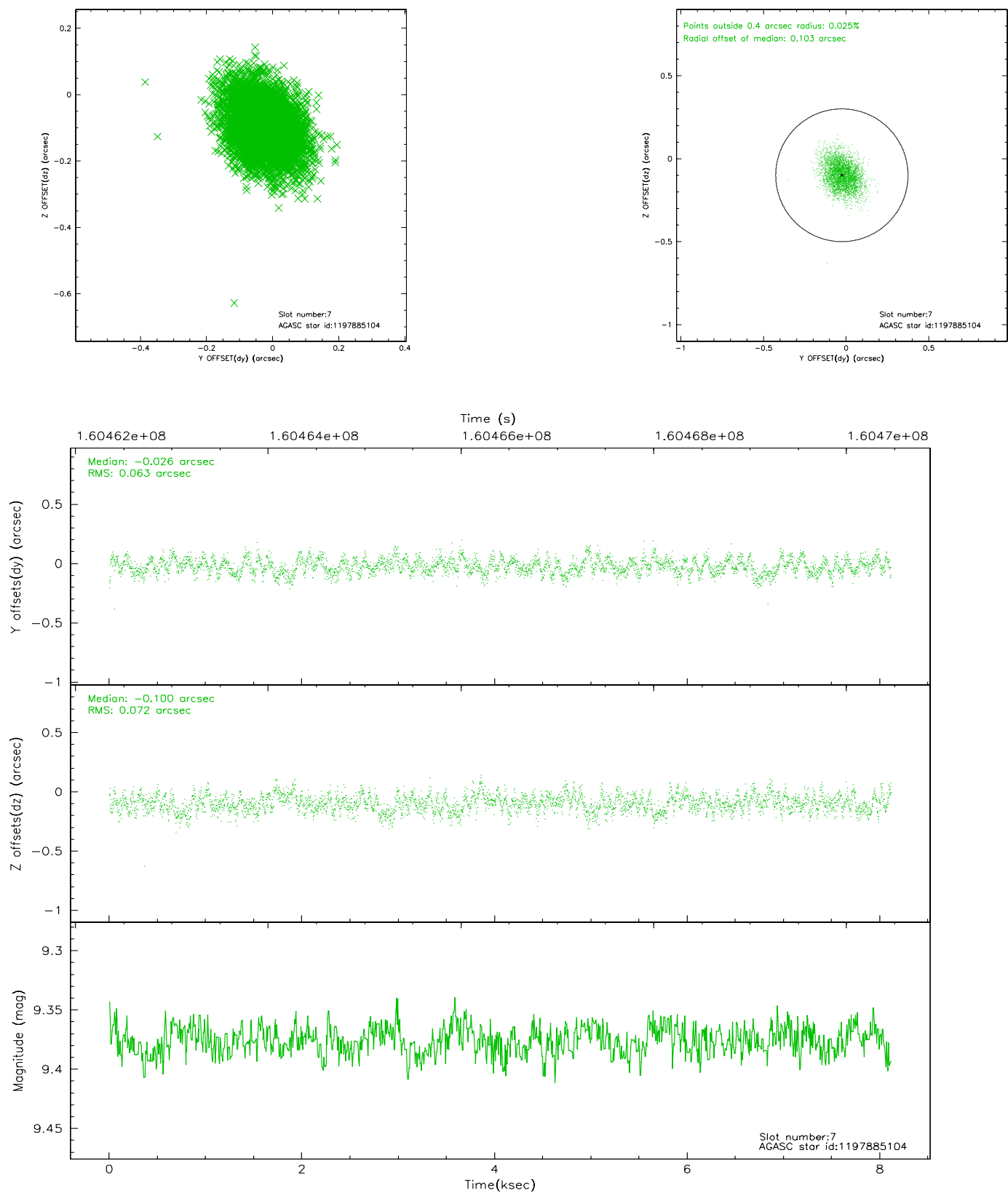
2.4.3 Slot 5



2.4.4 Slot 6

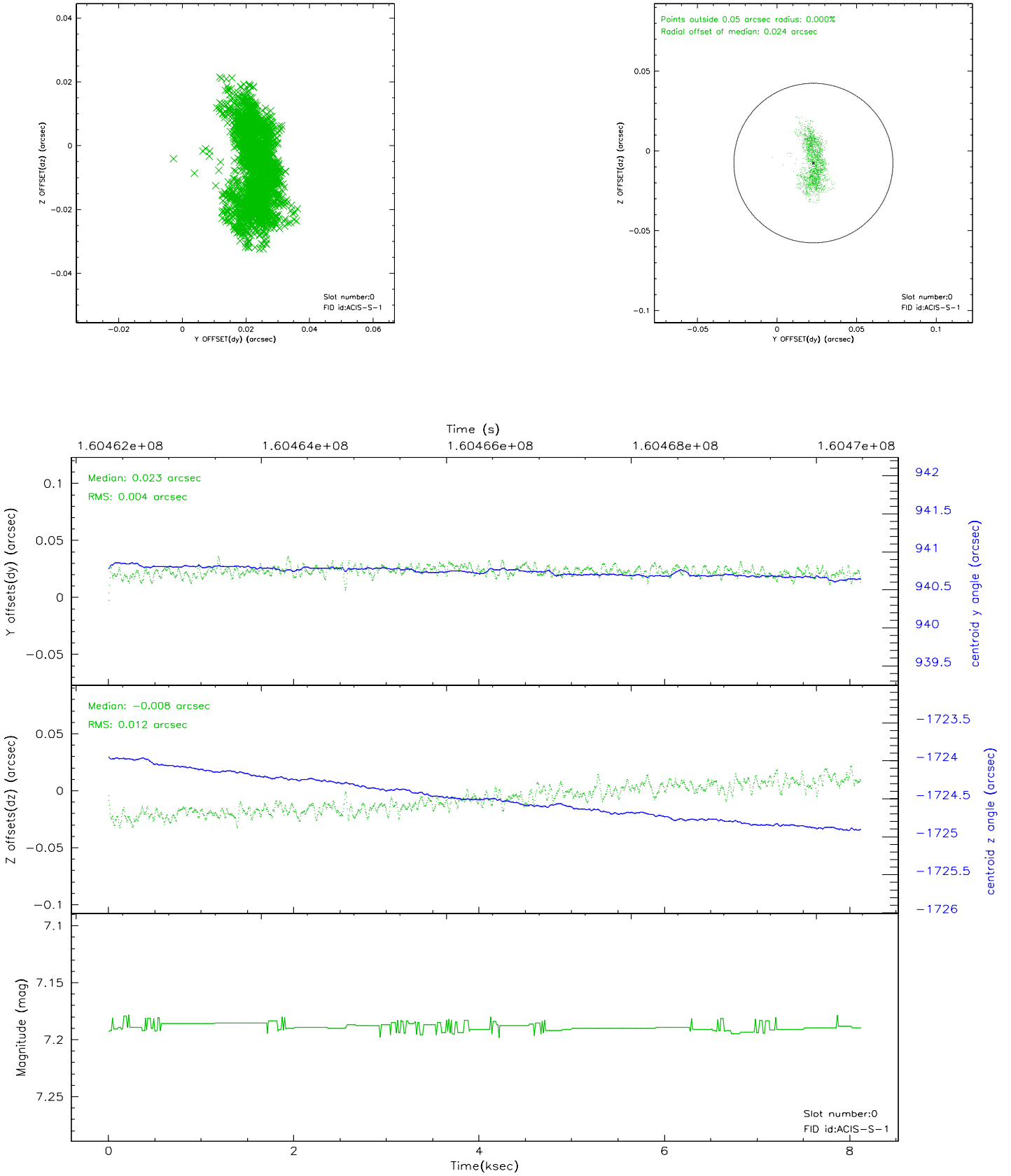


2.4.5 Slot 7

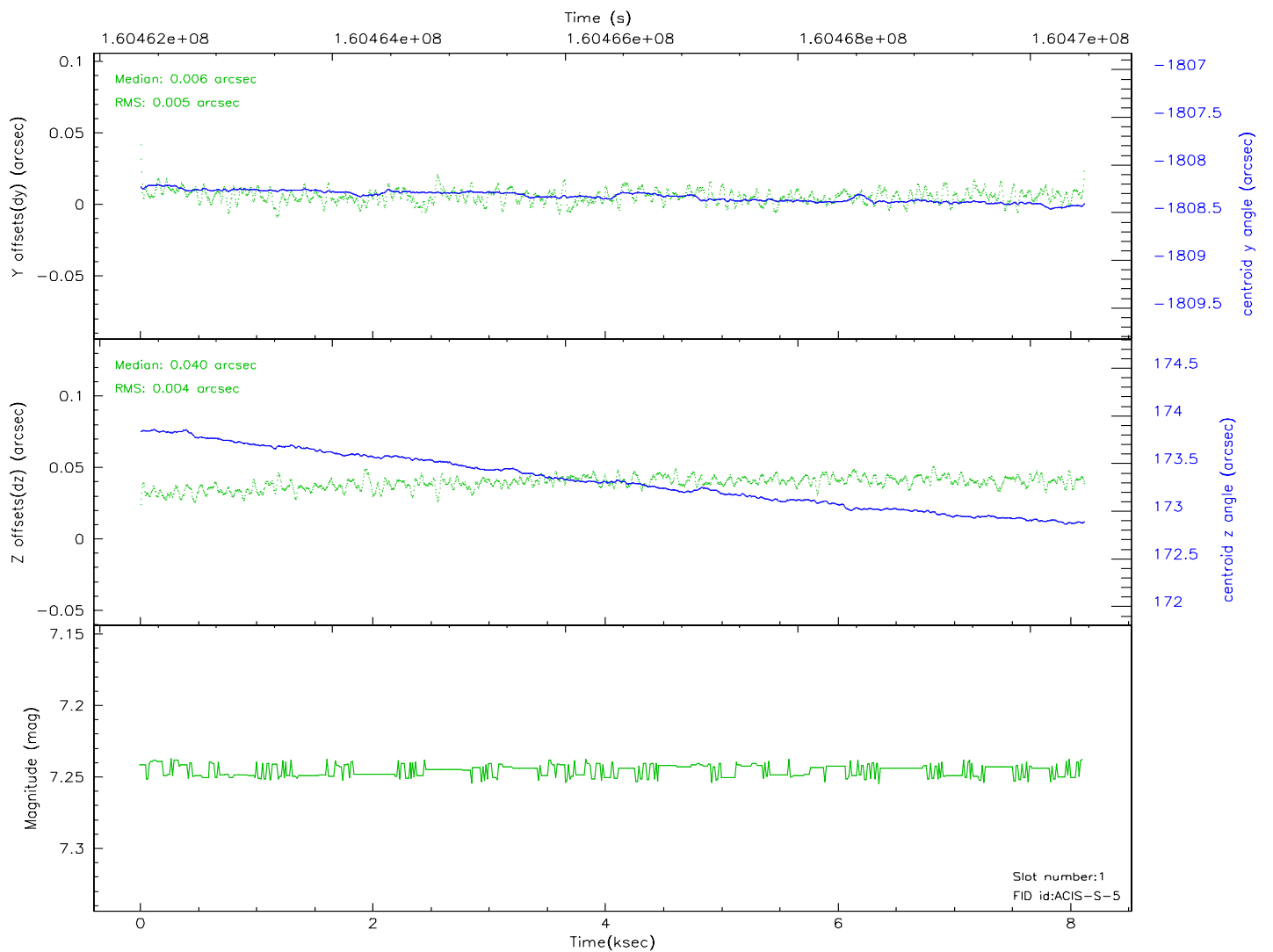
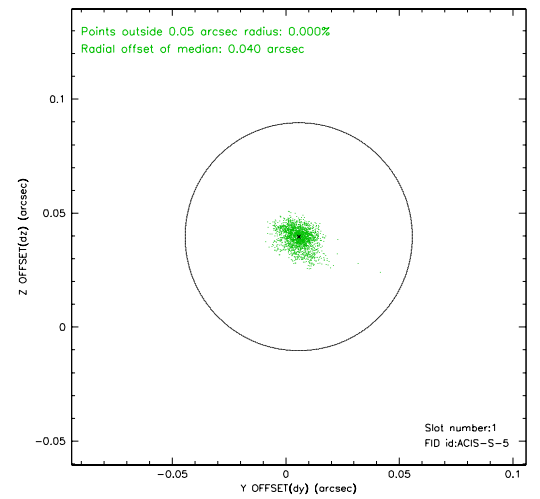
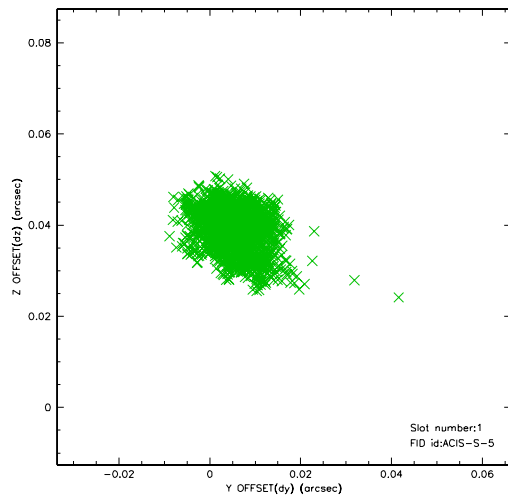


2.5 FID Slots

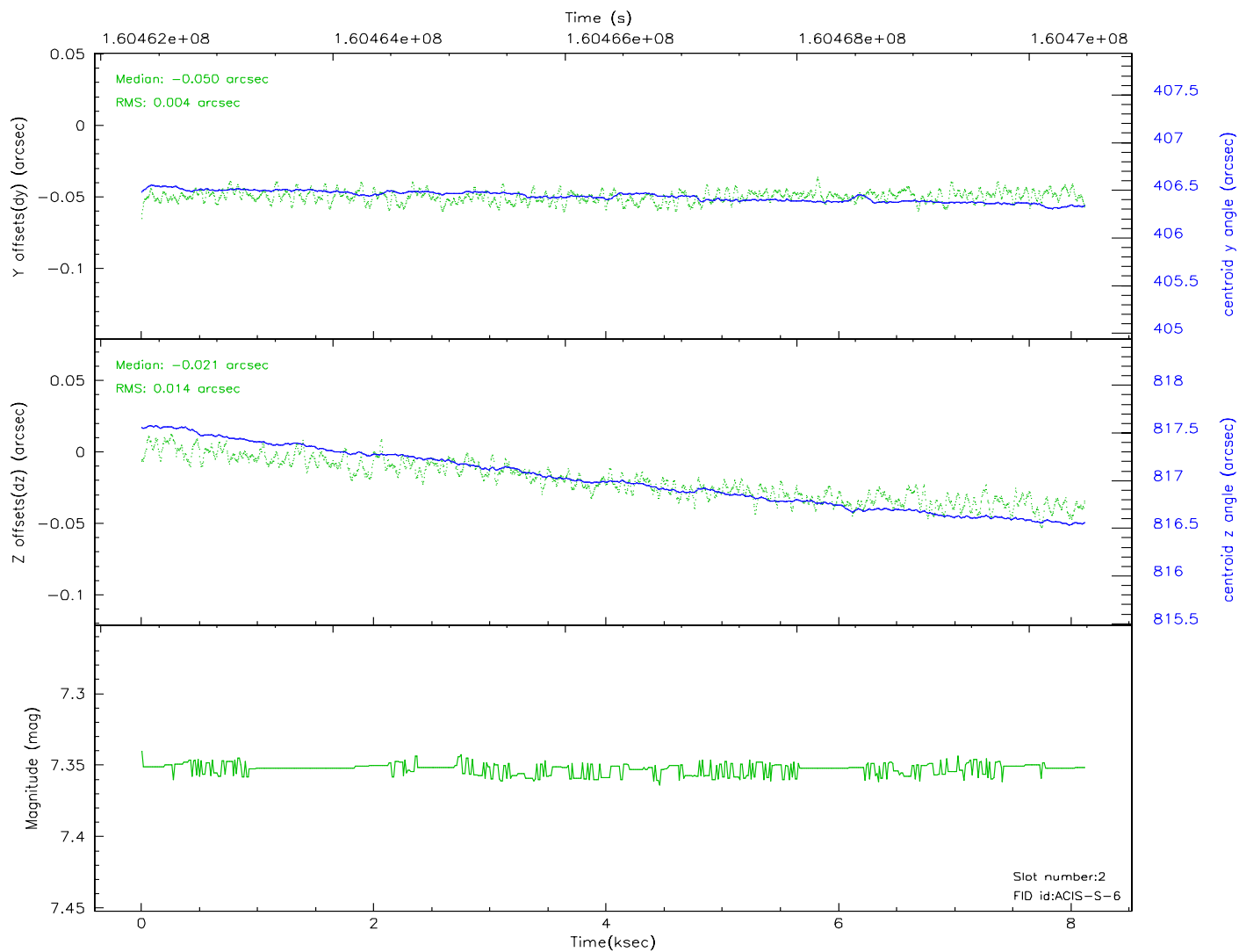
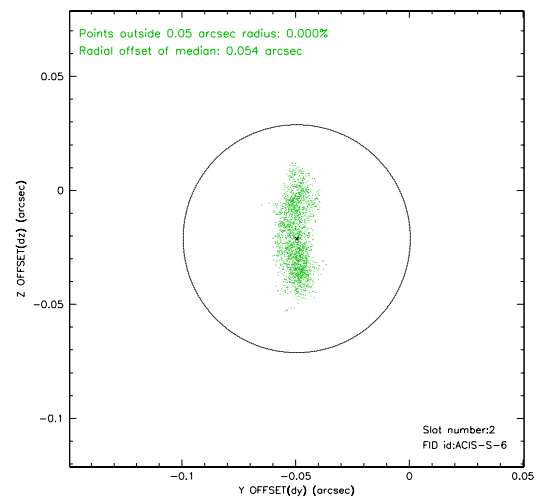
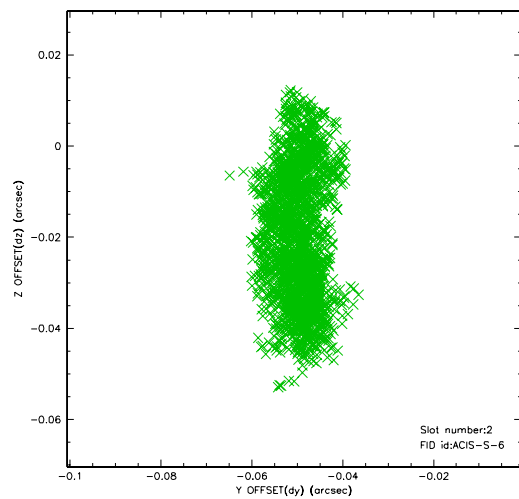
2.5.1 Slot 0



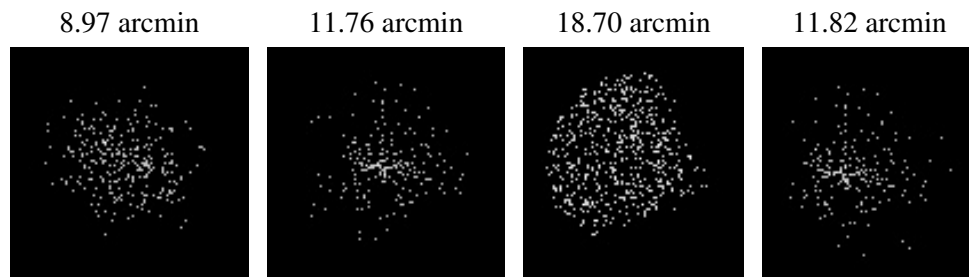
2.5.2 Slot 1



2.5.3 Slot 2



3 Point Sources



A Summary

A.1 Status

V&V Scientist	Jen Lauer
V&V Date (YYYY-MM-DD)	2006.07.20
V&V Edition	1
V&V Disposition and Status	OK
V&V Charge Time	8.111

A.2 Comments

Window constraint met.