

# V&V Reference Report

## L2 ASCDS Version : 8.4.5

Observation 3459 - L2 Version 3  
Chandra X-Ray Center

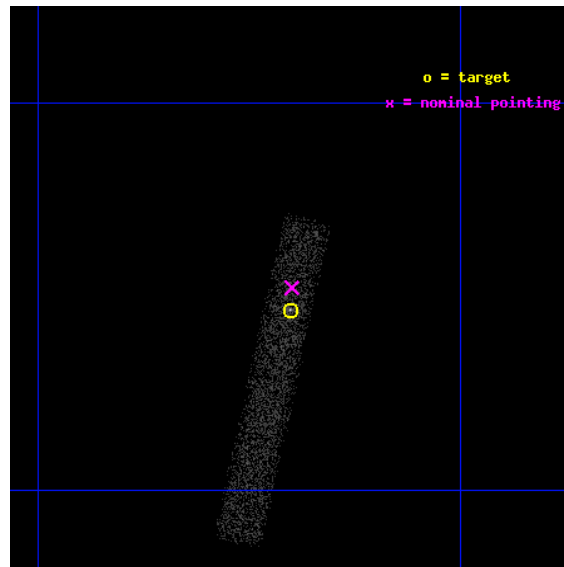
L2 Processing Date : Oct 28 2012

## Contents

<b>1</b>	<b>Front</b>	<b>2</b>
<b>2</b>	<b>OBI</b>	<b>3</b>
2.1	OBI . . . . .	3
2.1.1	Images . . . . .	3
2.1.2	Bias . . . . .	3
2.1.3	Parameters . . . . .	4
2.1.4	Events . . . . .	4
2.2	Compared Parameters . . . . .	5
2.3	Aspect . . . . .	6
2.4	Star Slots . . . . .	9
2.4.1	Slot 3 . . . . .	9
2.4.2	Slot 4 . . . . .	10
2.4.3	Slot 5 . . . . .	11
2.4.4	Slot 6 . . . . .	12
2.4.5	Slot 7 . . . . .	13
2.5	FID Slots . . . . .	14
2.5.1	Slot 0 . . . . .	14
2.5.2	Slot 1 . . . . .	15
2.5.3	Slot 2 . . . . .	16
<b>A</b>	<b>Summary</b>	<b>17</b>
A.1	Status . . . . .	17
A.2	Comments . . . . .	17

# 1 Front

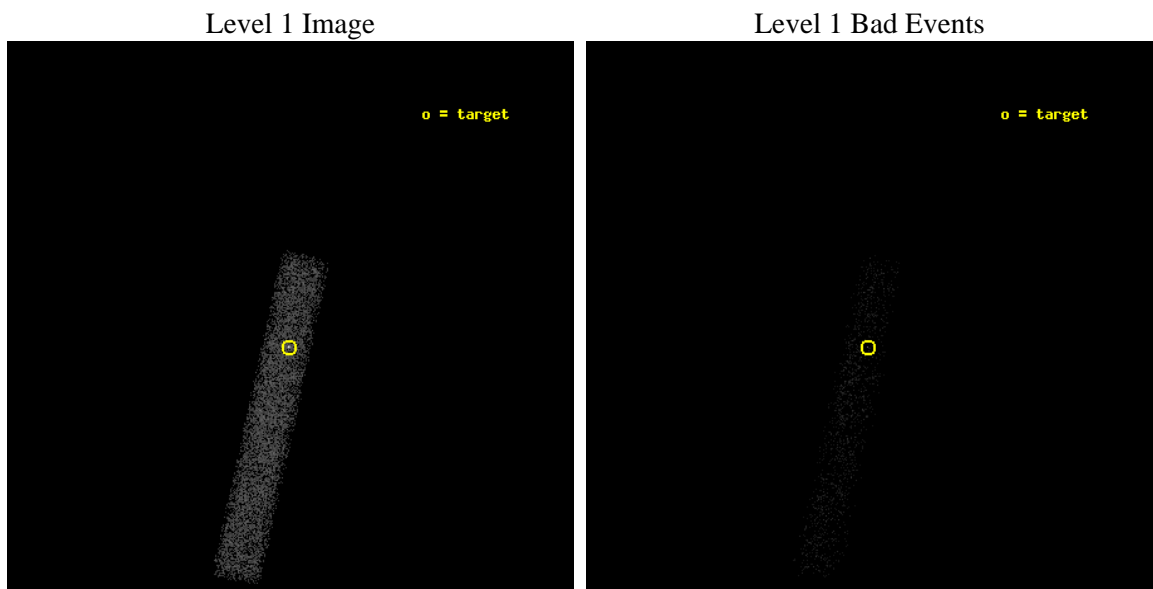
seq_num	700615	Sequence number
obs_id	3459	Observation id
title	OBSERVATIONS OF THE OPTICAL JET OF MH 2136-428	Proposal title
observer	DR. PAOLO PADOVANI	Principal investigator
object	MH 2136-428	Source name
dtcycle	0	&#160
cycle	P	events from which exps? Prim/Second/Both
ra_targ	324.850417	Observer's specified target RA [deg]
dec_targ	-42.58925	Observer's specified target Dec [deg]
ra_nom	324.84987010339	Nominal RA [deg]
dec_nom	-42.579619519744	Nominal Dec [deg]
roll_nom	102.43726555174	Nominal Roll [deg]
revision	3	Processing version of data
ontime	9896.800147444	Sum of GTIs [s]
liveltime	8975.8753377871	Livetime [s]
ontime7	9896.800147444	Sum of GTIs [s]
l2events	6398	Number of level 2 events



## 2 OBI

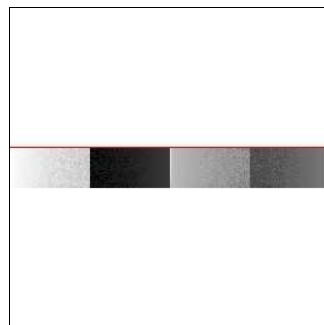
### 2.1 OBI

#### 2.1.1 Images



#### 2.1.2 Bias

Chip 7



### 2.1.3 Parameters

obi_num	0	Obi number	sched_exp_time	9712.000000	[s] Scheduled observation exposure time
ascdsver	8.4.5	Processing system revision	ontime	9896.800147444	Sum of GTIs [s]
caldsver	4.5.2	&#160	ontime7	9896.800147444	Sum of GTIs [s]
date	2012-10-28T13:27:22	Date and time of file creation	l1events	13736	Number of level 1 events
revision	3	Processing version of data			

### 2.1.4 Events

	<b>ccd 7</b>
level 1 events	13736
rejected events	7153
rejected %	52%

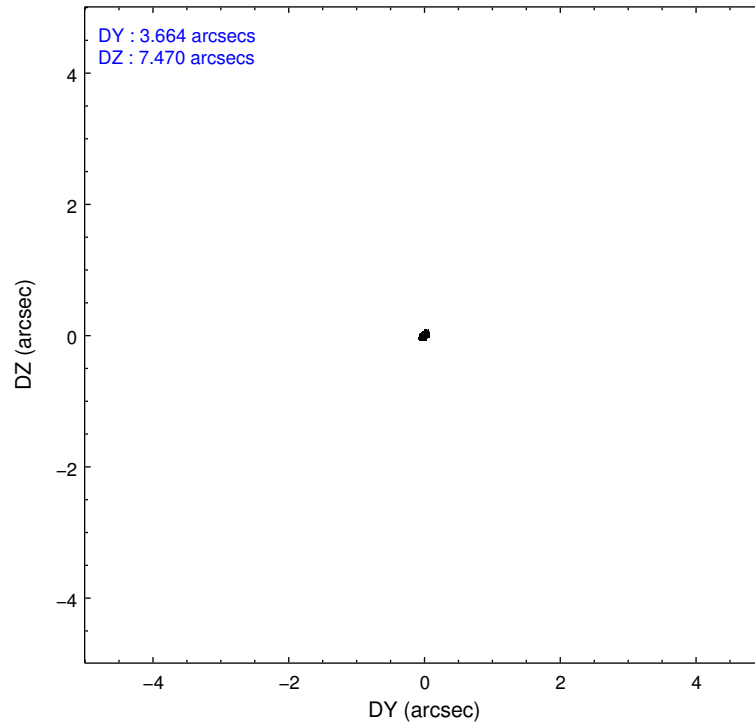
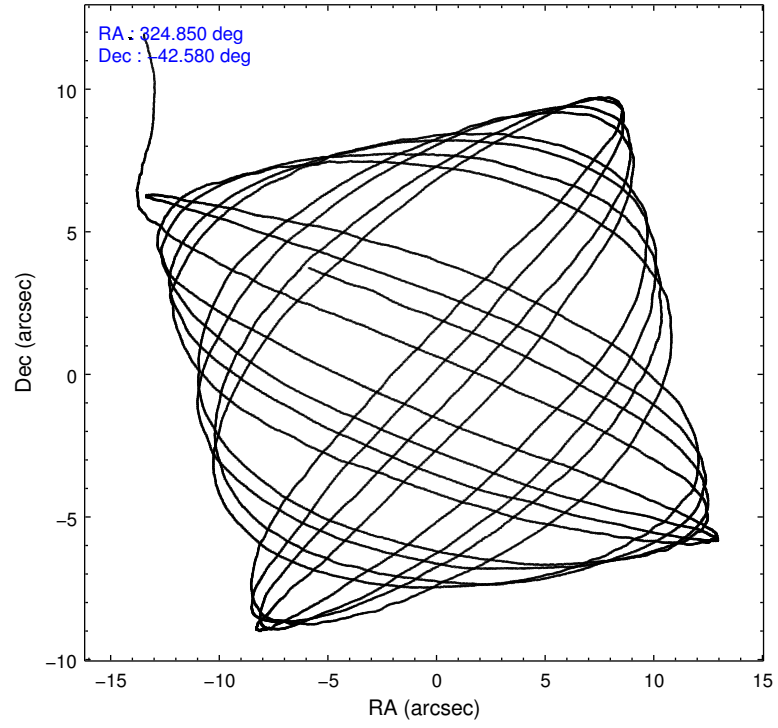
	<b>ccd 7</b>
grade 0 events	1278
	9%
grade 1 events	18
	0%
grade 2 events	1350
	9%
grade 3 events	885
	6%
grade 4 events	898
	6%
grade 5 events	1114
	8%
grade 6 events	2804
	20%
grade 7 events	5389
	39%

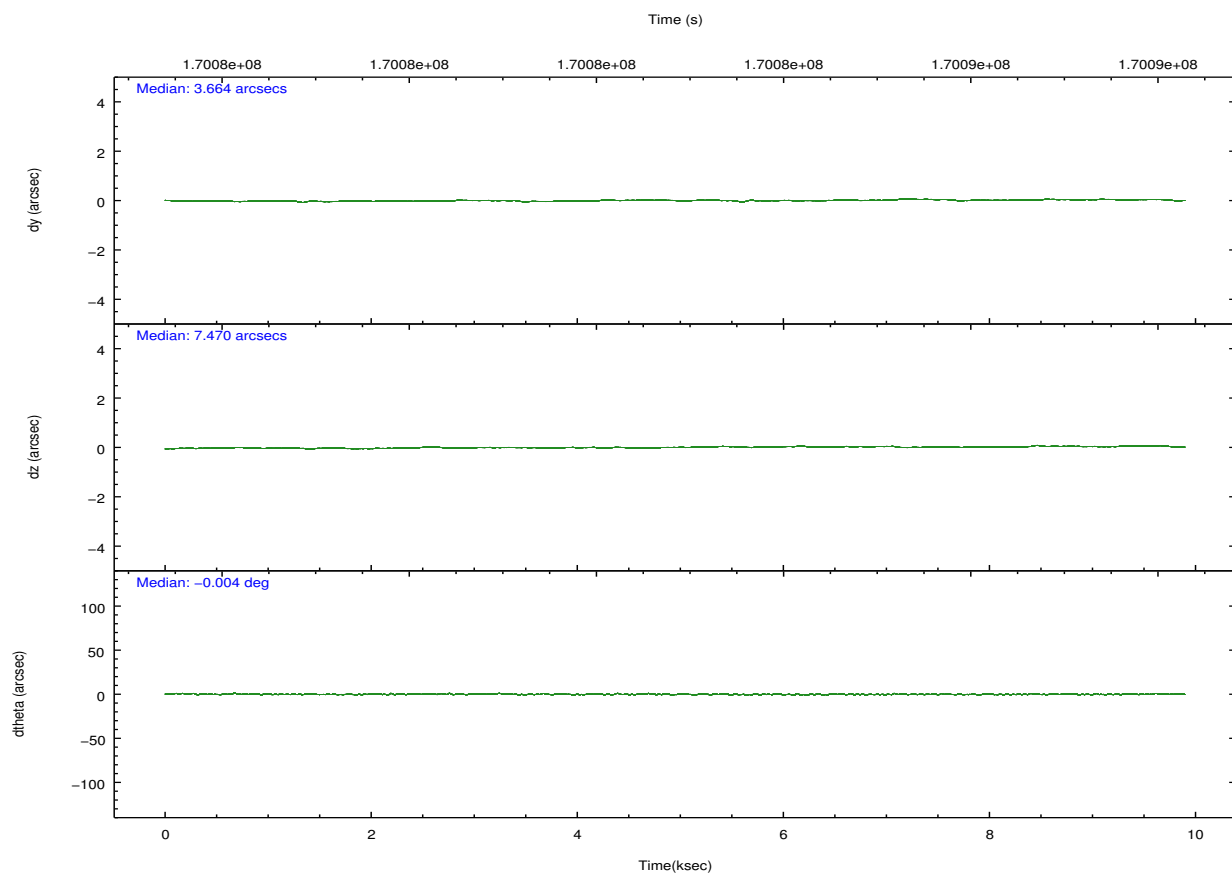
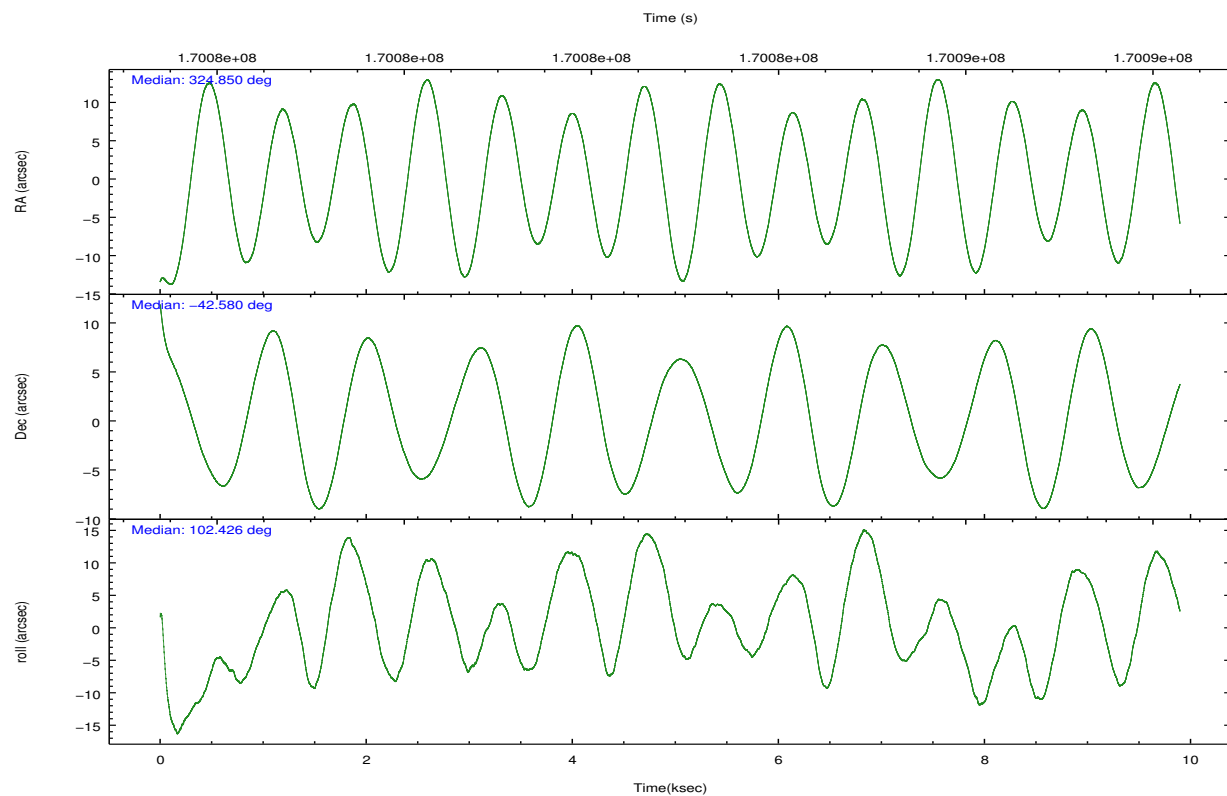


## 2.2 Compared Parameters

Parameter	Planned	Actual	Parameter	Planned	Actual
Instrument	ACIS	ACIS	Obspar format version number	7	7
Detector	ACIS-7	ACIS-7	Obspar file type	PREDICTED	ACTUAL
Grating	NONE	NONE	Obspar update status	NONE	UPDATED
Data mode	FAINT	FAINT	Number of optional ACIS chips dropped	0	0
Observation mode	POINTING	POINTING	On-chip summing requested	N	N
[deg] Pointing RA	324.875218	324.8498701033892	Subarray requested	CUSTOM	1/8
[deg] Pointing Dec	-42.599430	-42.57961951974386	Subarray start row	449	449
[deg] Pointing Roll	102.297786	102.4372655517362	Subarray row count	128	128
[mm] SIM focus pos	-0.684267	-0.6828225247311905	Alternating exposures requested	N	N
[mm] SIM defocus	0	0.001444936568705701	[s] Primary exposure time	0.000000	0.4
[mm] SIM translation stage pos	-190.132523	-190.1425803651734			
[mm] SIM translation stage offset	0	0.01005778216563158			
[s] Observation start time (MET)	170078073.184000	170076824.91055			
Observation start date	2003-05-23T11:53:29	2003-05-23T11:33:44			
[s] Observation end time (MET)	170087785.184000	170088572.94855			
Observation end date	2003-05-23T14:35:21	2003-05-23T14:49:32			
Read mode	TIMED	TIMED			

## 2.3 Aspect



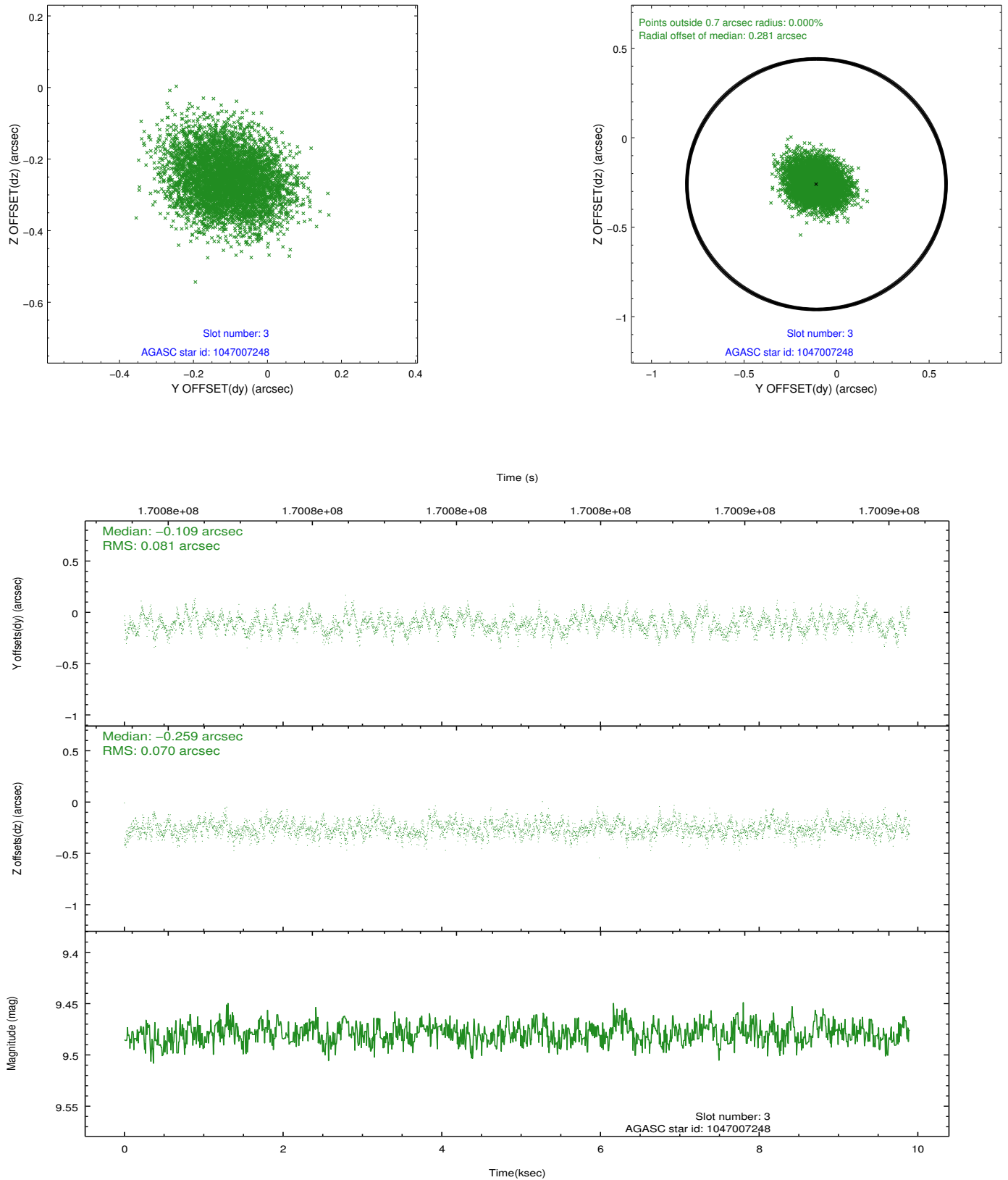


### Slot Statistics

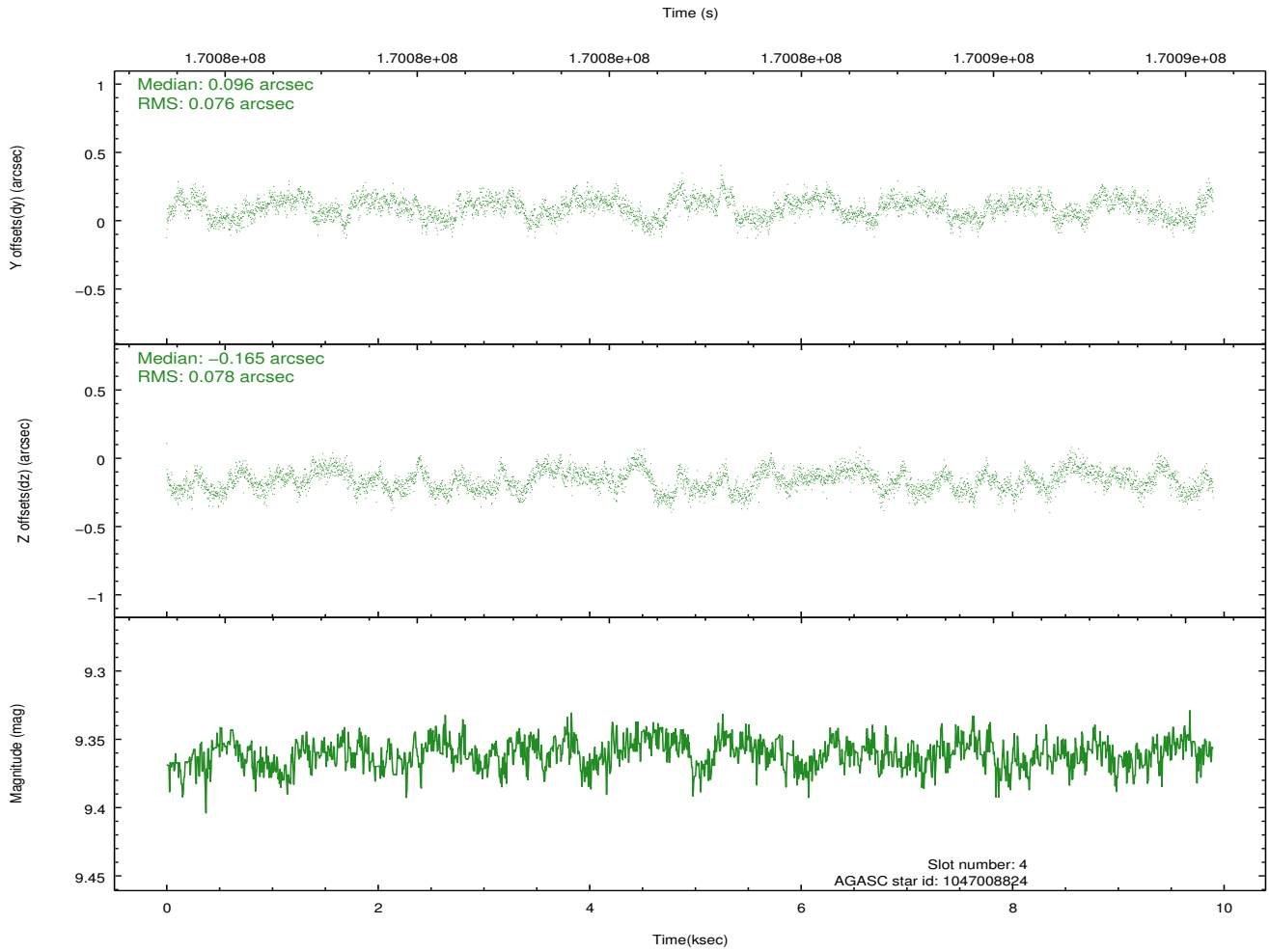
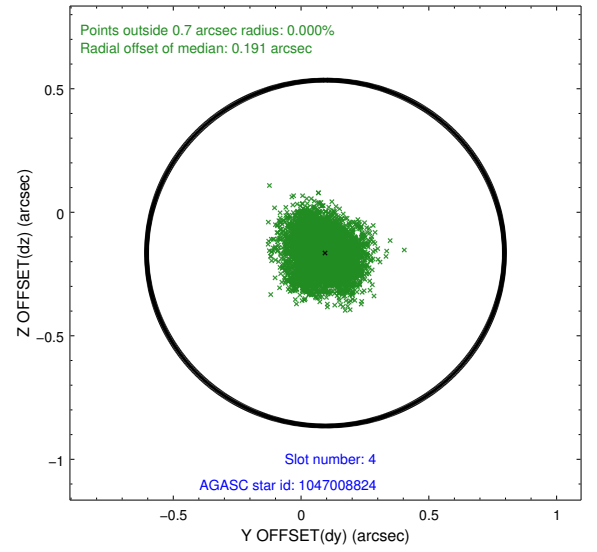
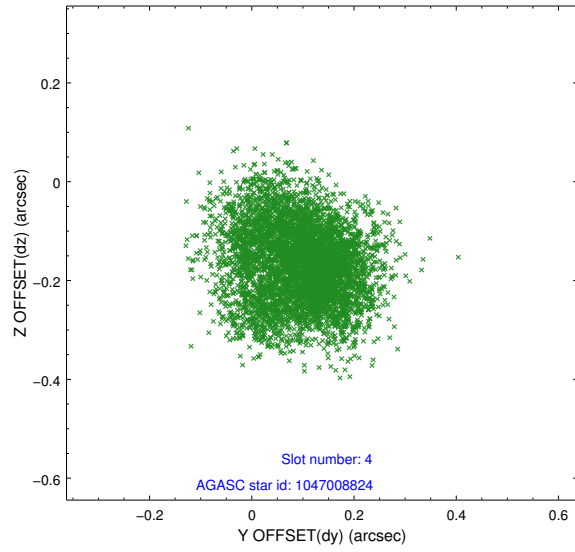
slot	status	id	mag	n_pts	med_dy	med_dz	dr1	dr2	ra	dec	mean_y	mean_z
0	FID	ACIS-S-2	7.11	2414	-0.028	-0.011	0.007	0.012	0.000000	0.000000	-756.36	-1728.60
1	FID	ACIS-S-4	7.20	2414	0.010	0.017	0.006	0.011	0.000000	0.000000	2156.72	179.34
2	FID	ACIS-S-6	7.35	2414	-0.010	0.001	0.007	0.012	0.000000	0.000000	406.34	817.34
3	GUIDE	1047007248	9.48	4825	-0.109	-0.259	0.115	0.182	324.085136	-42.463397	915.60	1947.96
4	GUIDE	1047008824	9.36	4829	0.096	-0.165	0.118	0.181	324.668991	-42.710894	-275.93	619.07
5	GUIDE	1047136976	9.82	4762	0.147	0.227	0.144	0.226	325.710863	-42.779978	-1115.26	-2016.20
6	GUIDE	1047531480	6.64	4829	0.096	-0.142	0.065	0.101	324.966930	-43.131997	-1924.54	172.26
7	GUIDE	1047140560	9.79	4824	-0.233	0.332	0.126	0.201	325.697507	-42.199920	927.84	-2446.01

## 2.4 Star Slots

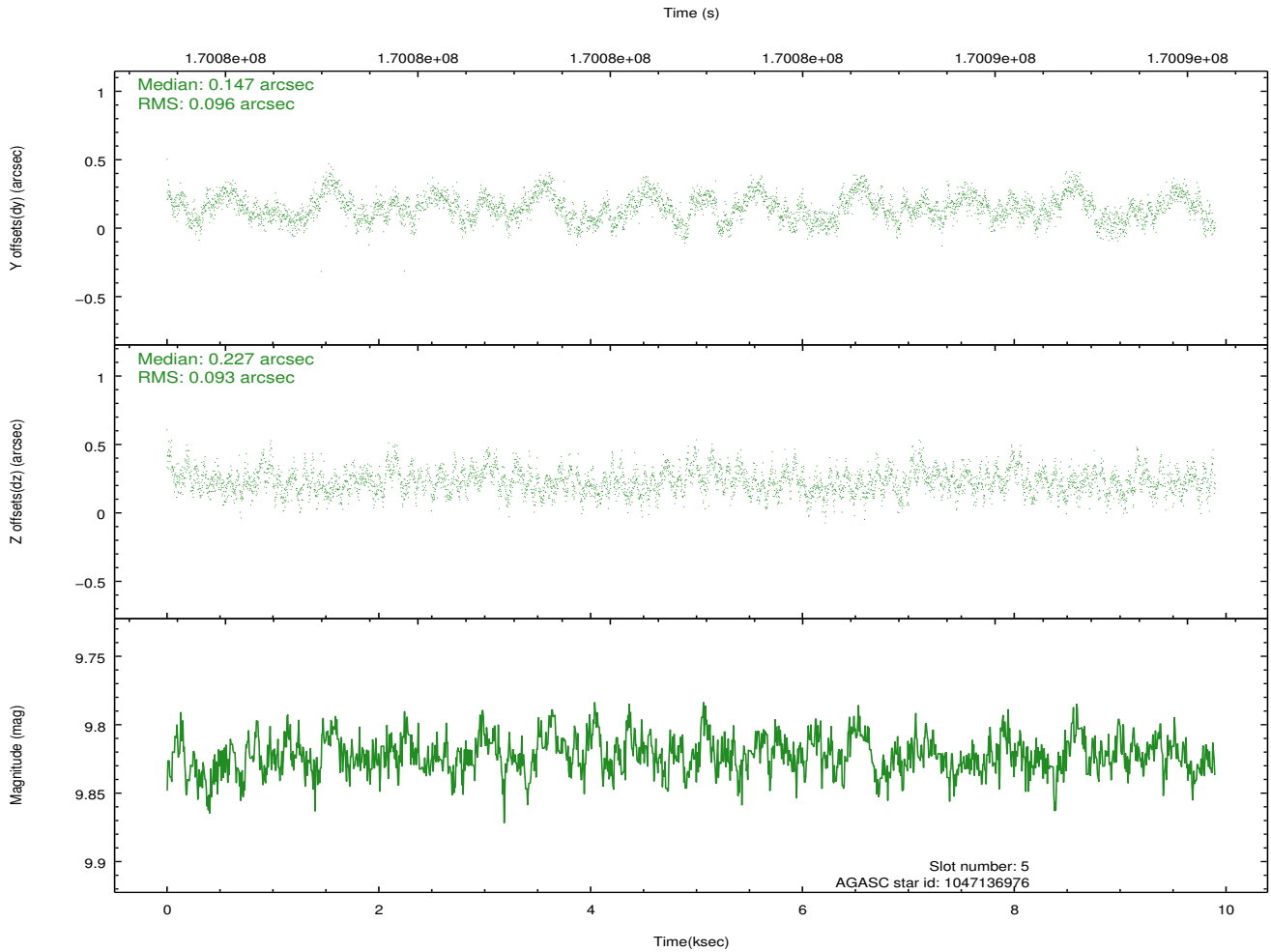
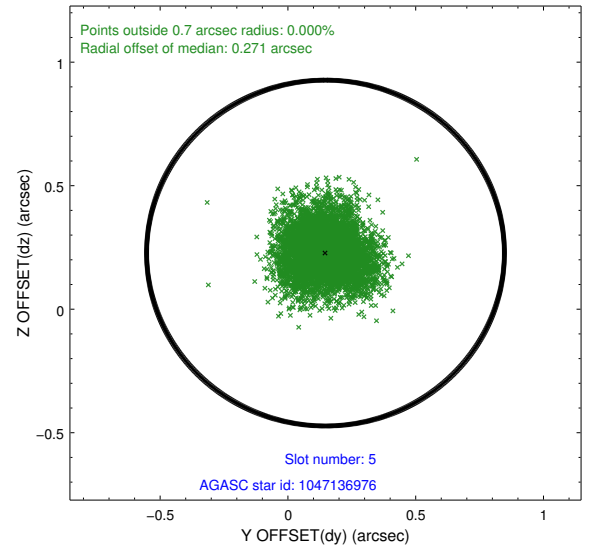
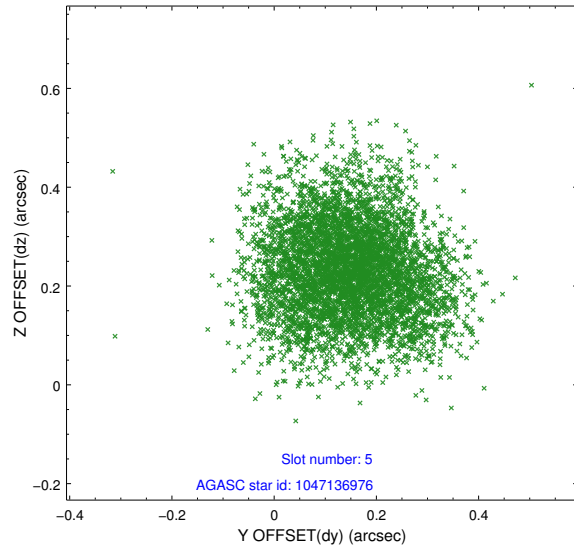
### 2.4.1 Slot 3



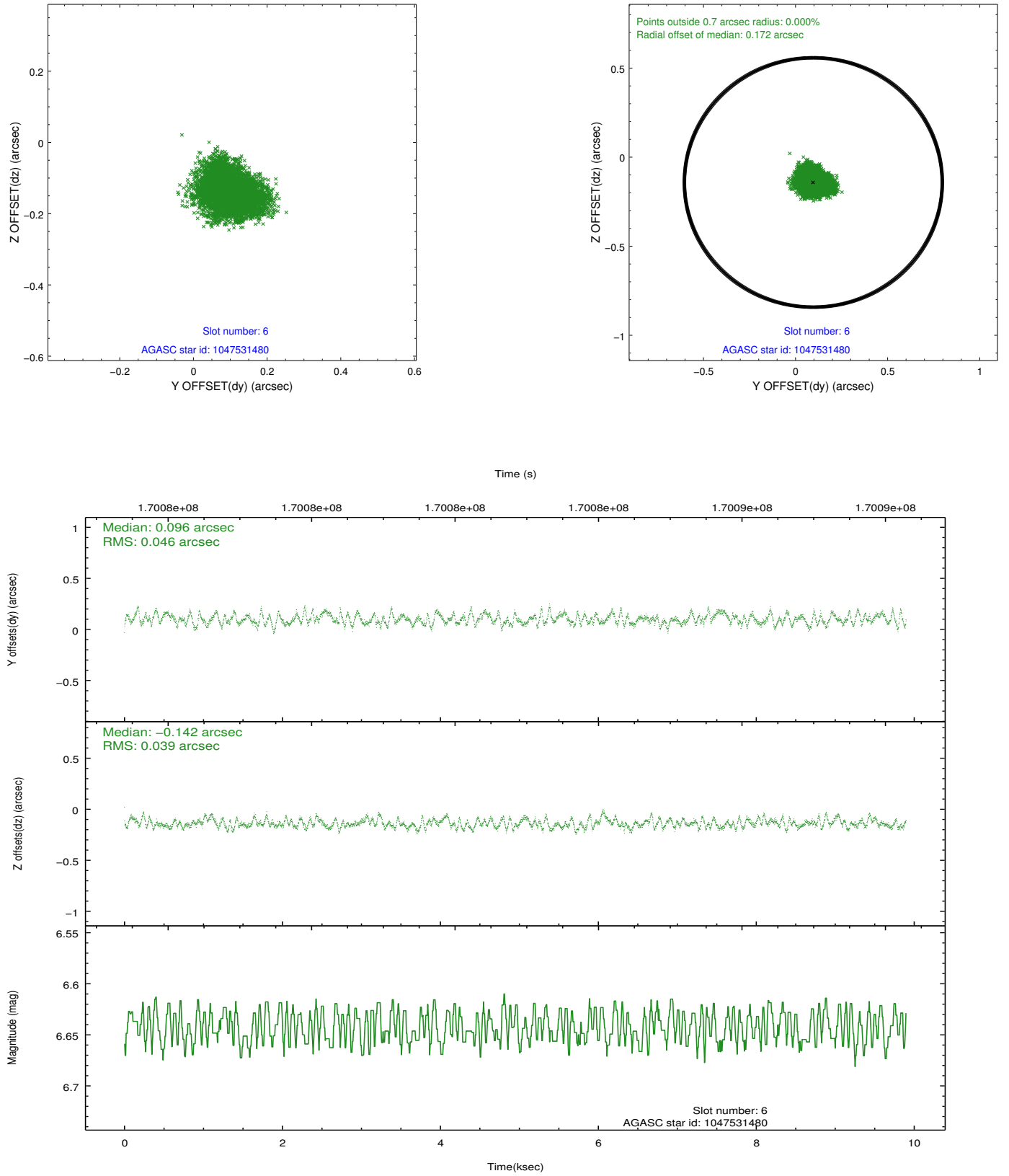
## 2.4.2 Slot 4



### 2.4.3 Slot 5

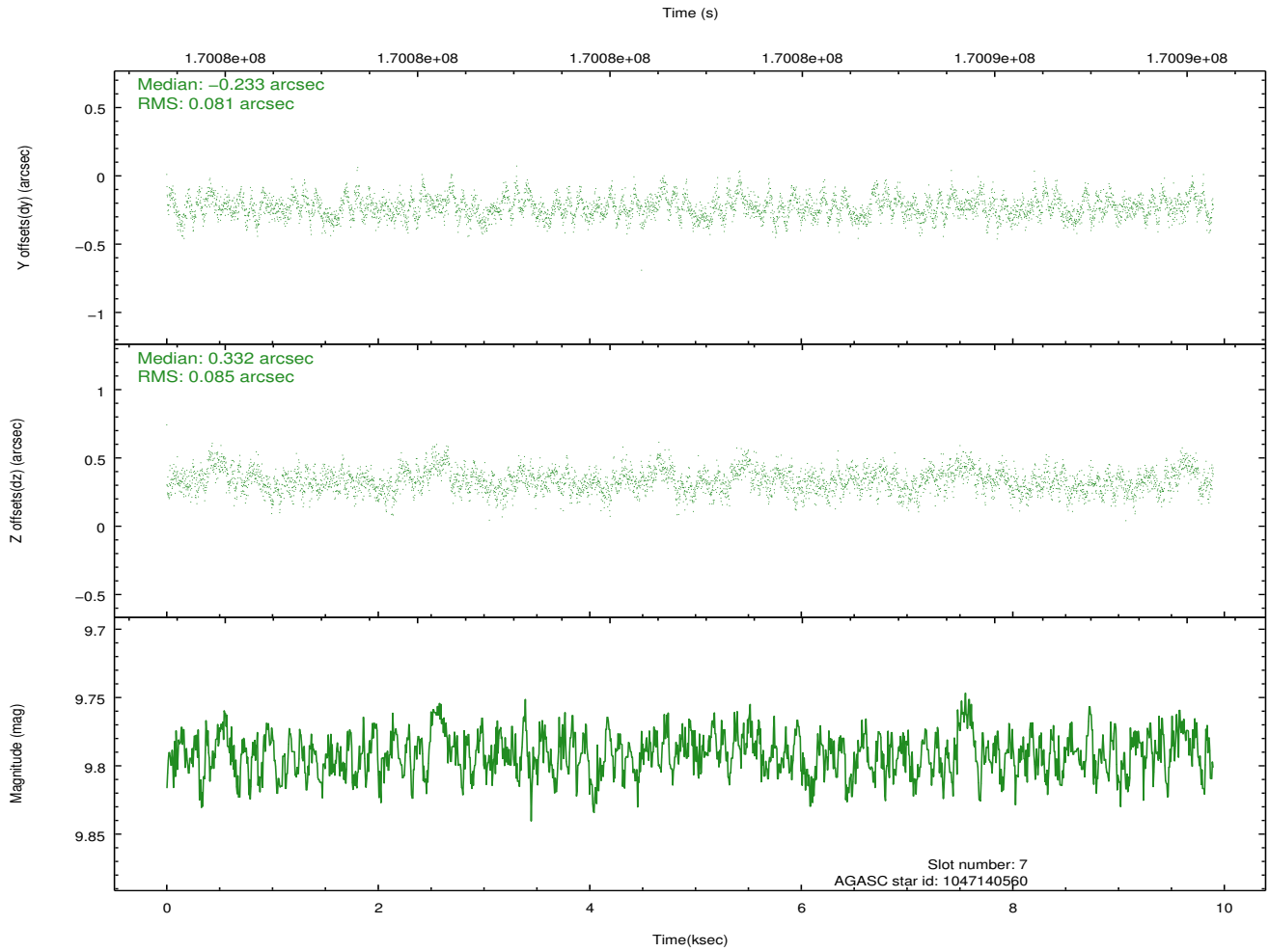
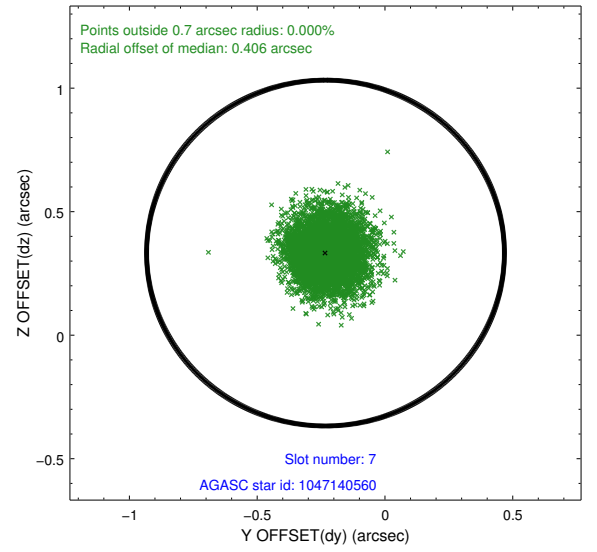
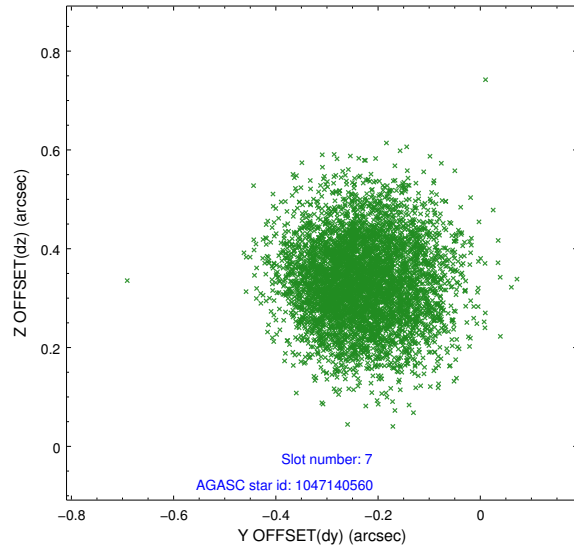


## 2.4.4 Slot 6



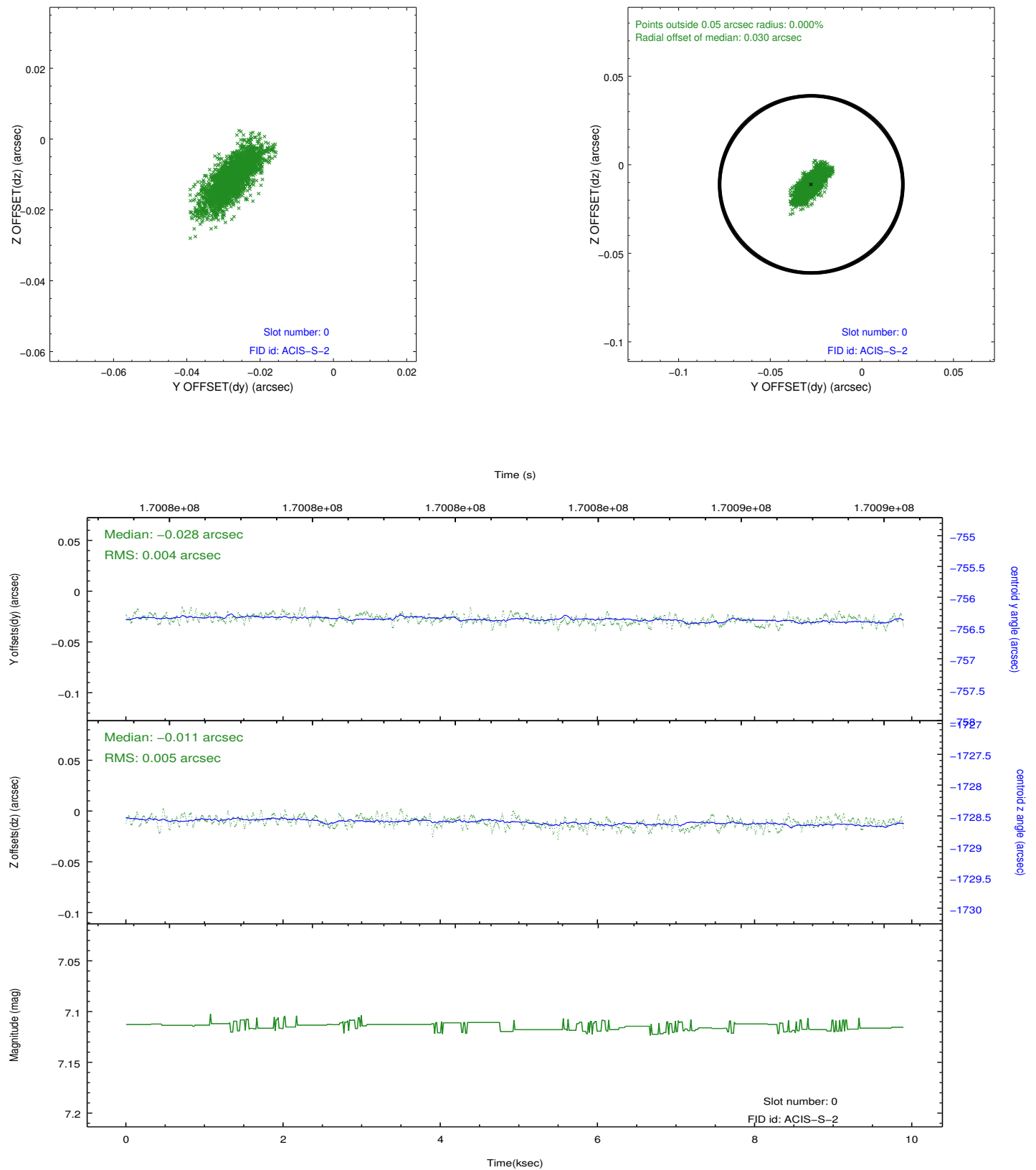


## 2.4.5 Slot 7

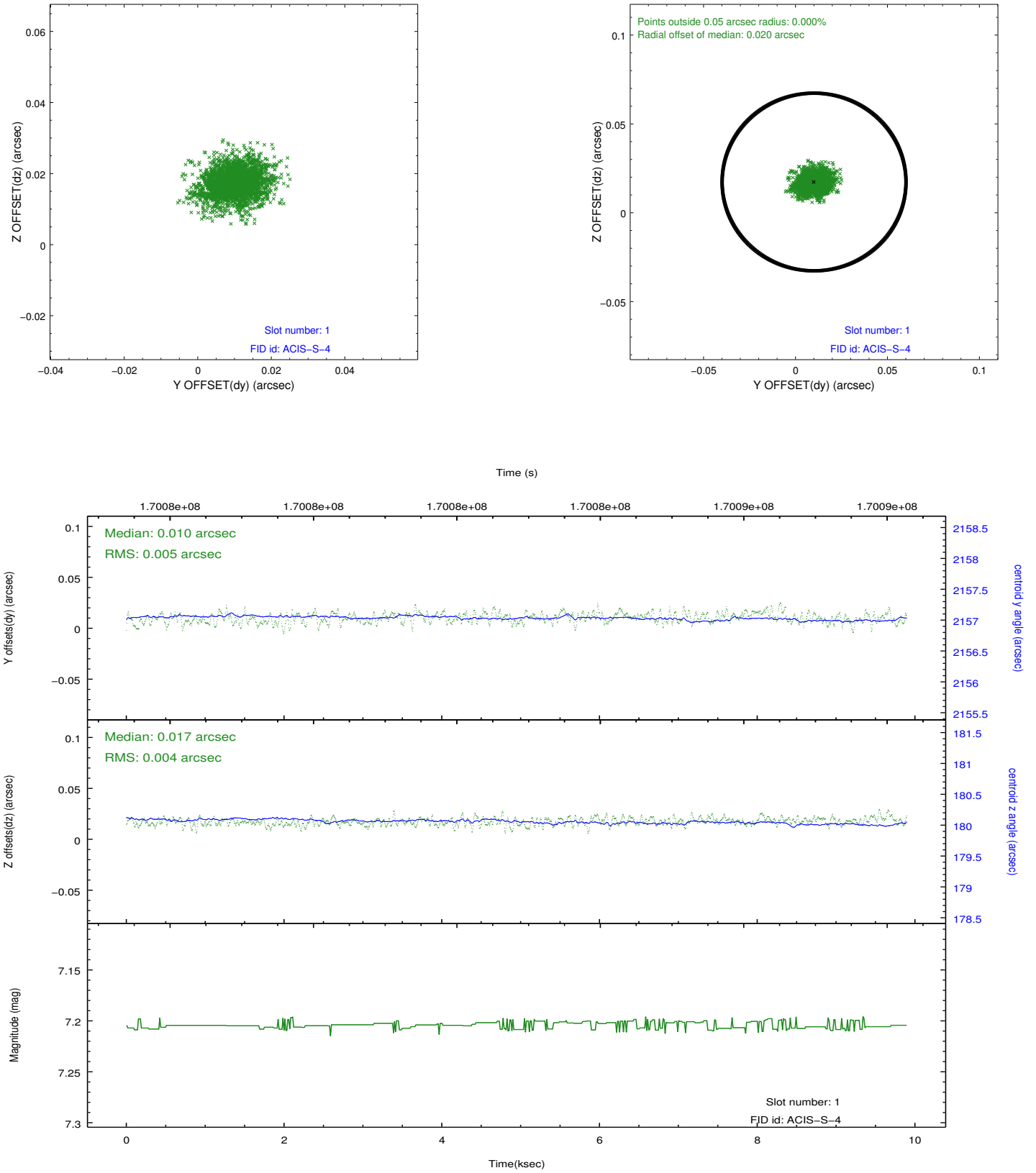


## 2.5 FID Slots

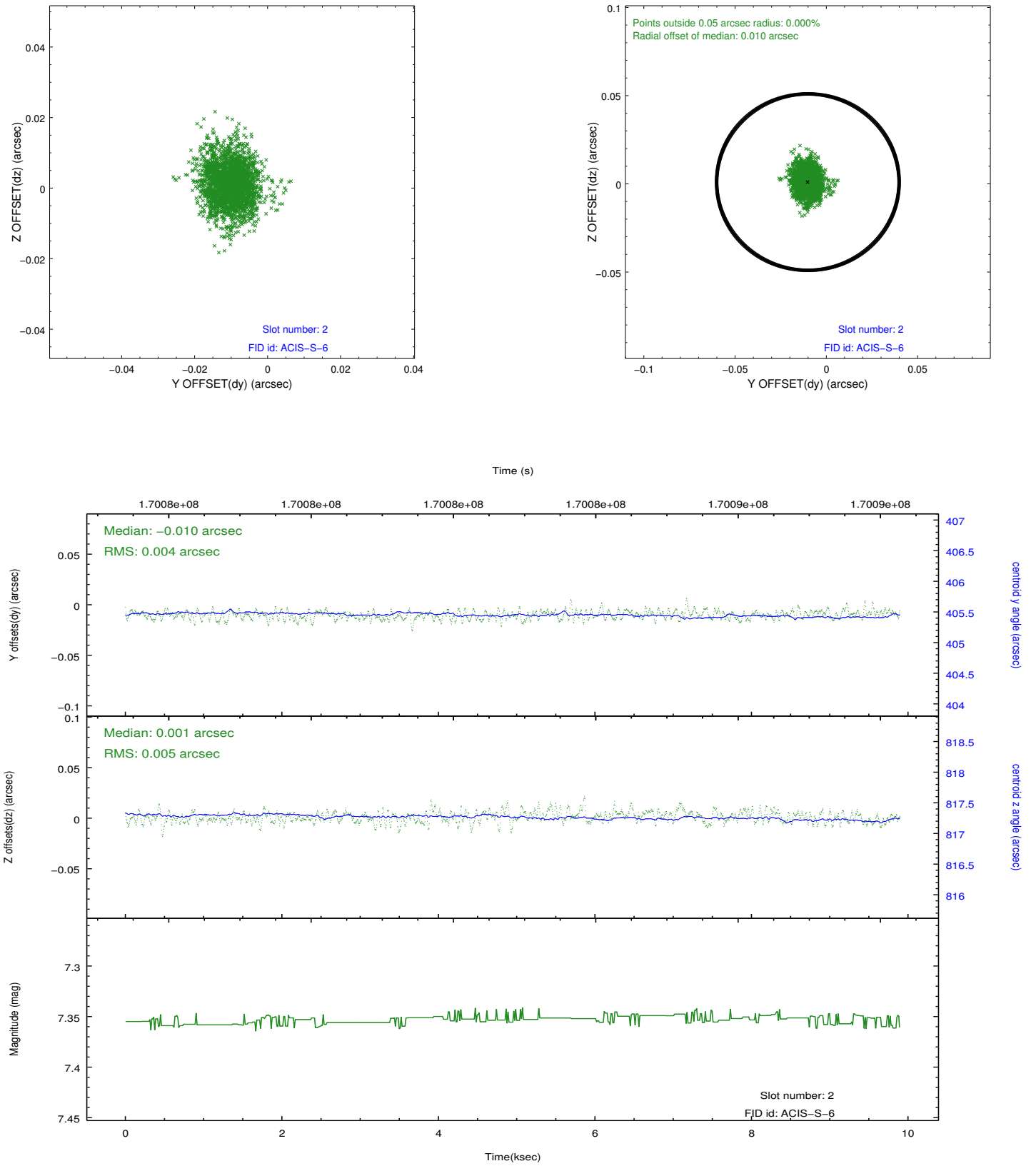
### 2.5.1 Slot 0



## 2.5.2 Slot 1



### 2.5.3 Slot 2



# A Summary

## A.1 Status

V&V Scientist	Jen Lauer
V&V Date (YYYY-MM-DD)	2012.11.15
V&V Edition	1
V&V Disposition and Status	OK
V&V Charge Time	9.896

## A.2 Comments

Joint Proposal: CX0-HST