

# V&V Reference Report

## L2 ASCDS Version : 8.4.5

Observation 3399 - L2 Version 3  
Chandra X-Ray Center

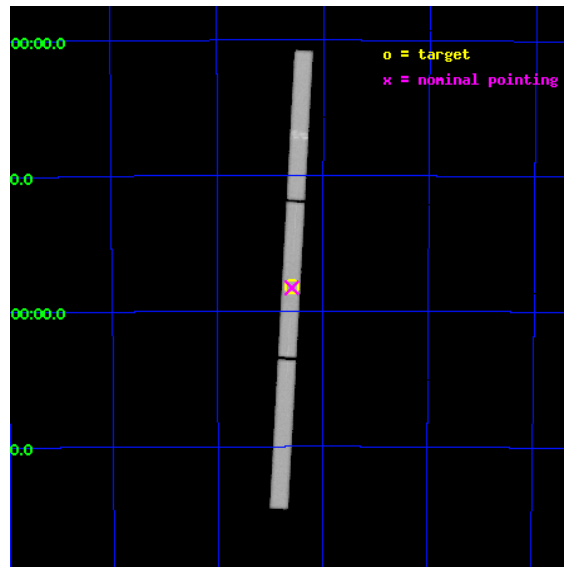
L2 Processing Date : Sep 25 2012

## Contents

<b>1</b>	<b>Front</b>	<b>2</b>
<b>2</b>	<b>OBI</b>	<b>3</b>
2.1	OBI . . . . .	3
2.1.1	Images . . . . .	3
2.1.2	Parameters . . . . .	4
2.1.3	Events . . . . .	4
2.2	Compared Parameters . . . . .	5
2.3	Aspect . . . . .	6
2.4	Star Slots . . . . .	9
2.4.1	Slot 3 . . . . .	9
2.4.2	Slot 4 . . . . .	10
2.4.3	Slot 5 . . . . .	11
2.4.4	Slot 6 . . . . .	12
2.4.5	Slot 7 . . . . .	13
2.5	FID Slots . . . . .	14
2.5.1	Slot 0 . . . . .	14
2.5.2	Slot 1 . . . . .	15
2.5.3	Slot 2 . . . . .	16
<b>3</b>	<b>Gratings</b>	<b>17</b>
3.1	LETG Arm . . . . .	17
<b>A</b>	<b>Summary</b>	<b>19</b>
A.1	Status . . . . .	19
A.2	Comments . . . . .	19

# 1 Front

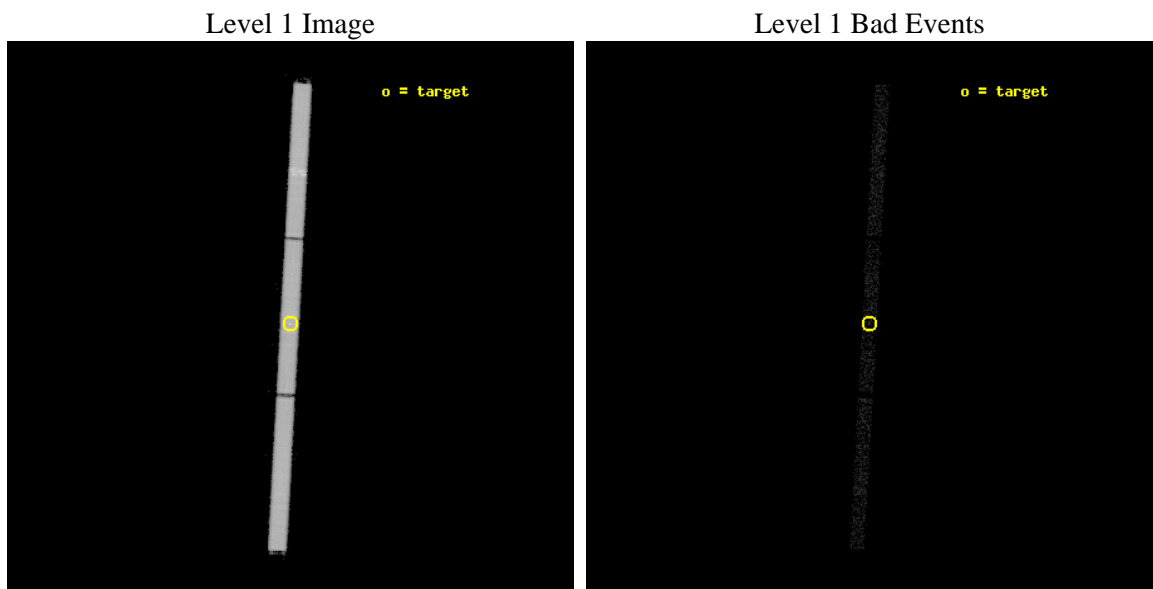
seq_num	500285	Sequence number
obs_id	3399	Observation id
title	ARCHIVAL RESEARCH FOR ISOLATED NEUTRON STAR RXJ185635-3754	Proposa
observer	Dr. Harvey Tananbaum	Principal investigator
object	RXJ1856.5-3754	Source name
ra_targ	284.147083	Observer's specified target RA [deg]
dec_targ	-37.909556	Observer's specified target Dec [deg]
ra_nom	284.14727936829	Nominal RA [deg]
dec_nom	-37.914380081303	Nominal Dec [deg]
roll_nom	273.07492392462	Nominal Roll [deg]
revision	3	Processing version of data
ontime	9320.5816198438	[s]
livetime	9250.8989474399	Ontime multiplied by DTCOR
l2events	459240	Number of level 2 events



## 2 OBI

### 2.1 OBI

#### 2.1.1 Images



### 2.1.2 Parameters

obi_num	0	Obi number	sched_exp_time	9339.000000	[s] Scheduled observation exposure time
ascdsver	8.4.5	Processing system revision	ontime	9320.5816198438	[s]
caldsver	4.5.1.1	&#160	l1events	629707	Number of level 1 events
date	2012-09-25T04:19:54	Date and time of file creation			
revision	3	Processing version of data			

### 2.1.3 Events

Level 1 Events

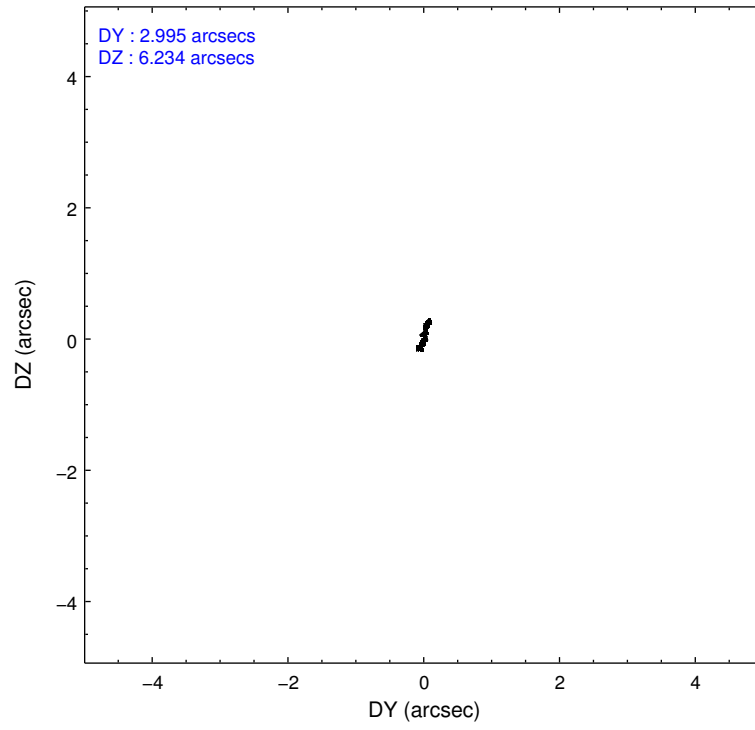
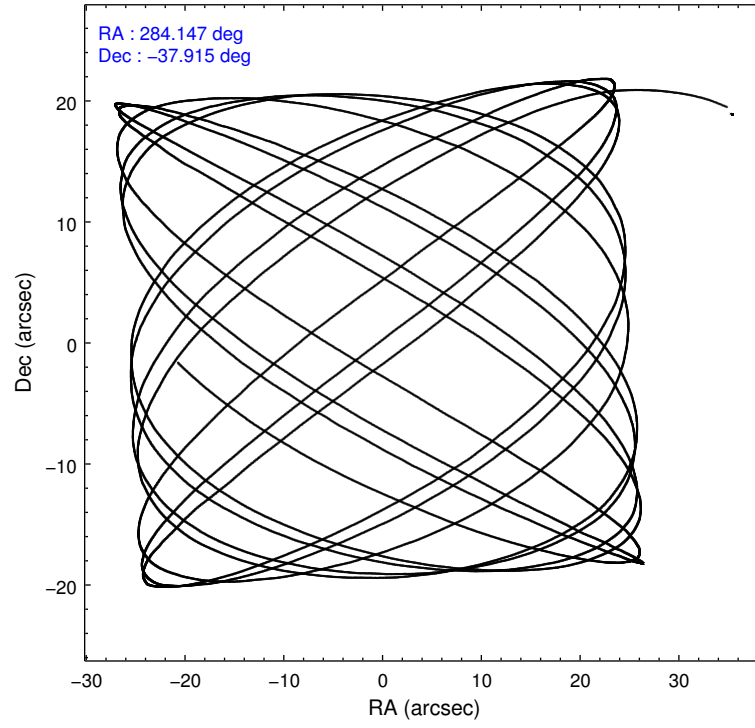
	<b>segment 1</b>	<b>segment 2</b>	<b>segment 3</b>
level 1 events	221379	202368	205960
rejected events	2665	2426	2487
rejected %	1%	1%	1%

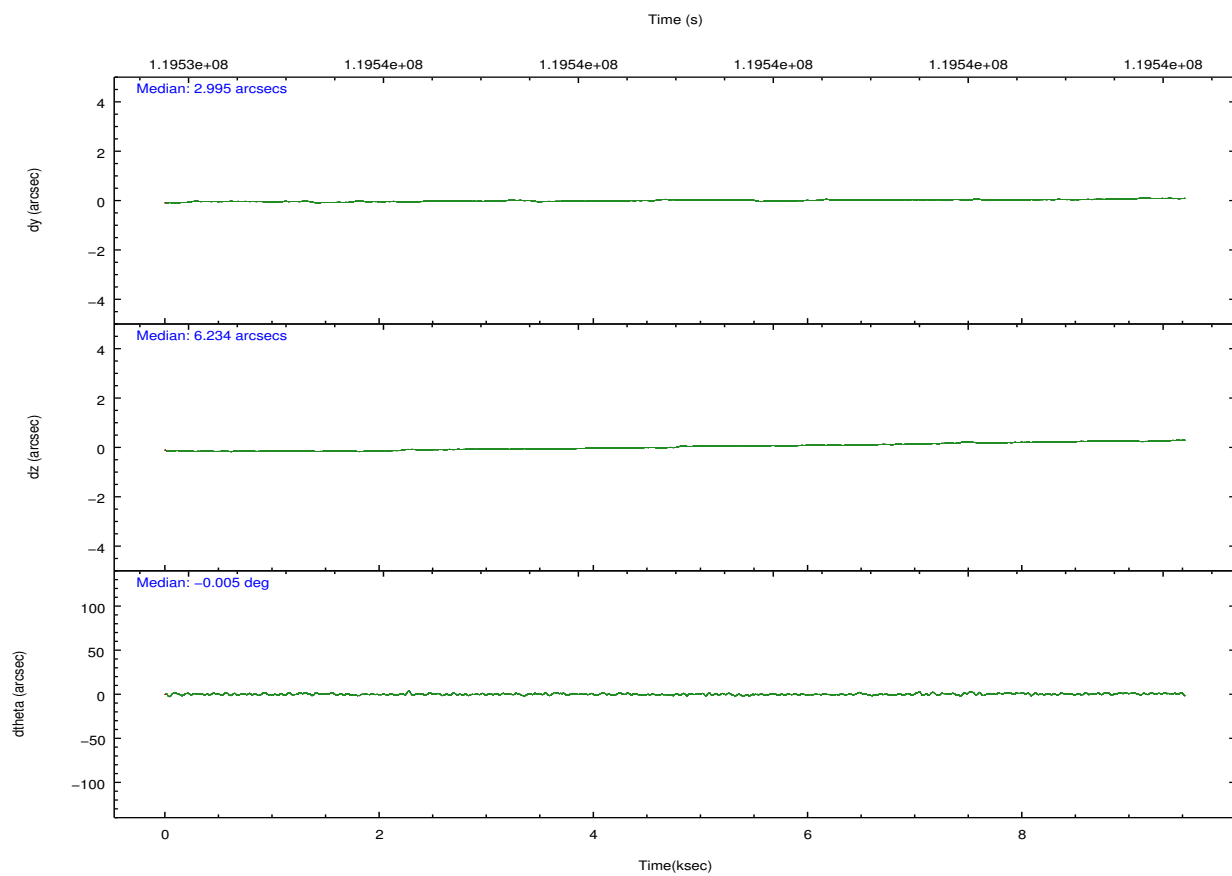
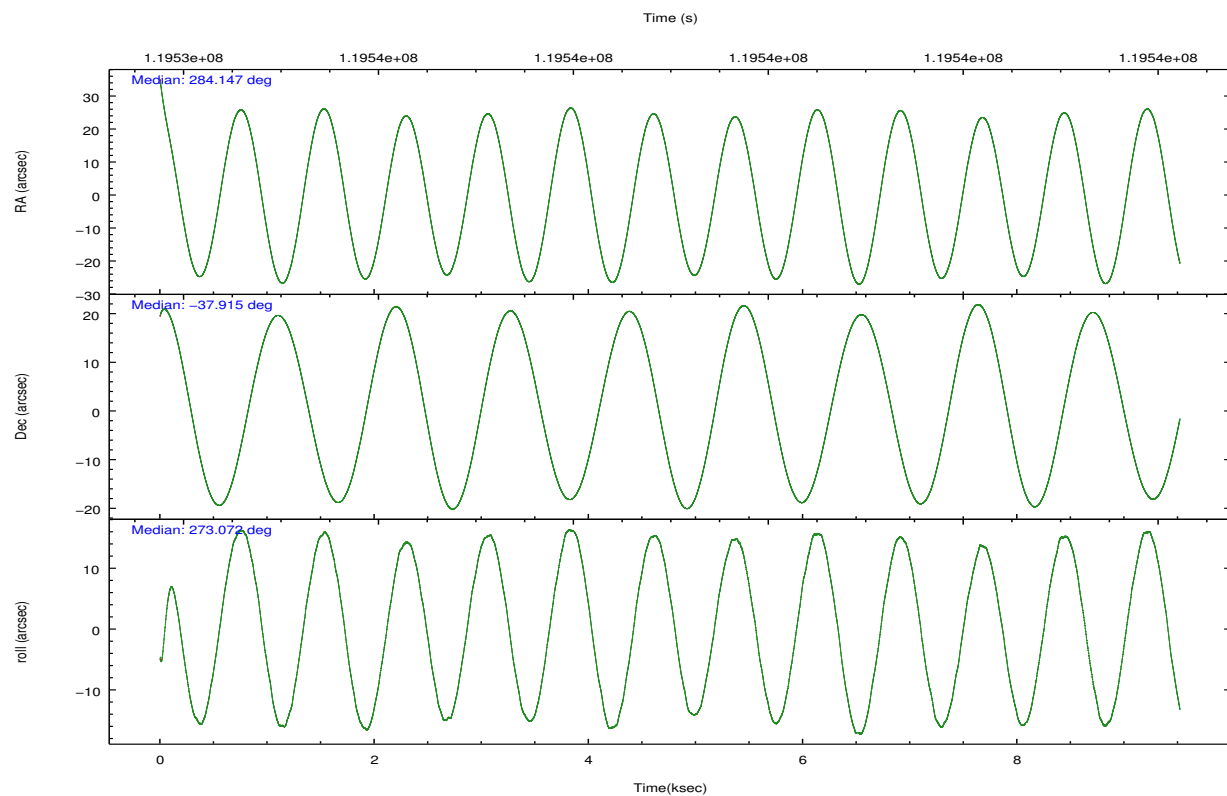


## 2.2 Compared Parameters

Parameter	Planned	Actual	Parameter	Planned	Actual
Instrument	HRC	HRC	Obspar format version number	7	7
Detector	HRC-S	HRC-S	Obspar file type	PREDICTED	ACTUAL
Grating	LETG	LETG	Obspar update status	NONE	UPDATED
Data mode	OBSERVING	OBSERVING			
Observation mode	POINTING	POINTING			
[deg] Pointing RA	284.125970	284.1472793682941			
[deg] Pointing Dec	-37.891068	-37.91438008130297			
[deg] Pointing Roll	272.994524	273.0749239246217			
[mm] SIM focus pos	-1.429586	-1.428180813131781			
[mm] SIM defocus	0.1037507710433287	0.1051558262725154			
[mm] SIM translation stage pos	250.455976	250.466033080201			
[mm] SIM translation stage offset	0	-0.01005468664627074			
[s] Observation start time (MET)	119534416.184000	119533626.44438			
Observation start date	2001-10-15T11:59:12	2001-10-15T11:47:06			
[s] Observation end time (MET)	119543755.184000	119544179.3323			
Observation end date	2001-10-15T14:34:51	2001-10-15T14:42:59			

## 2.3 Aspect



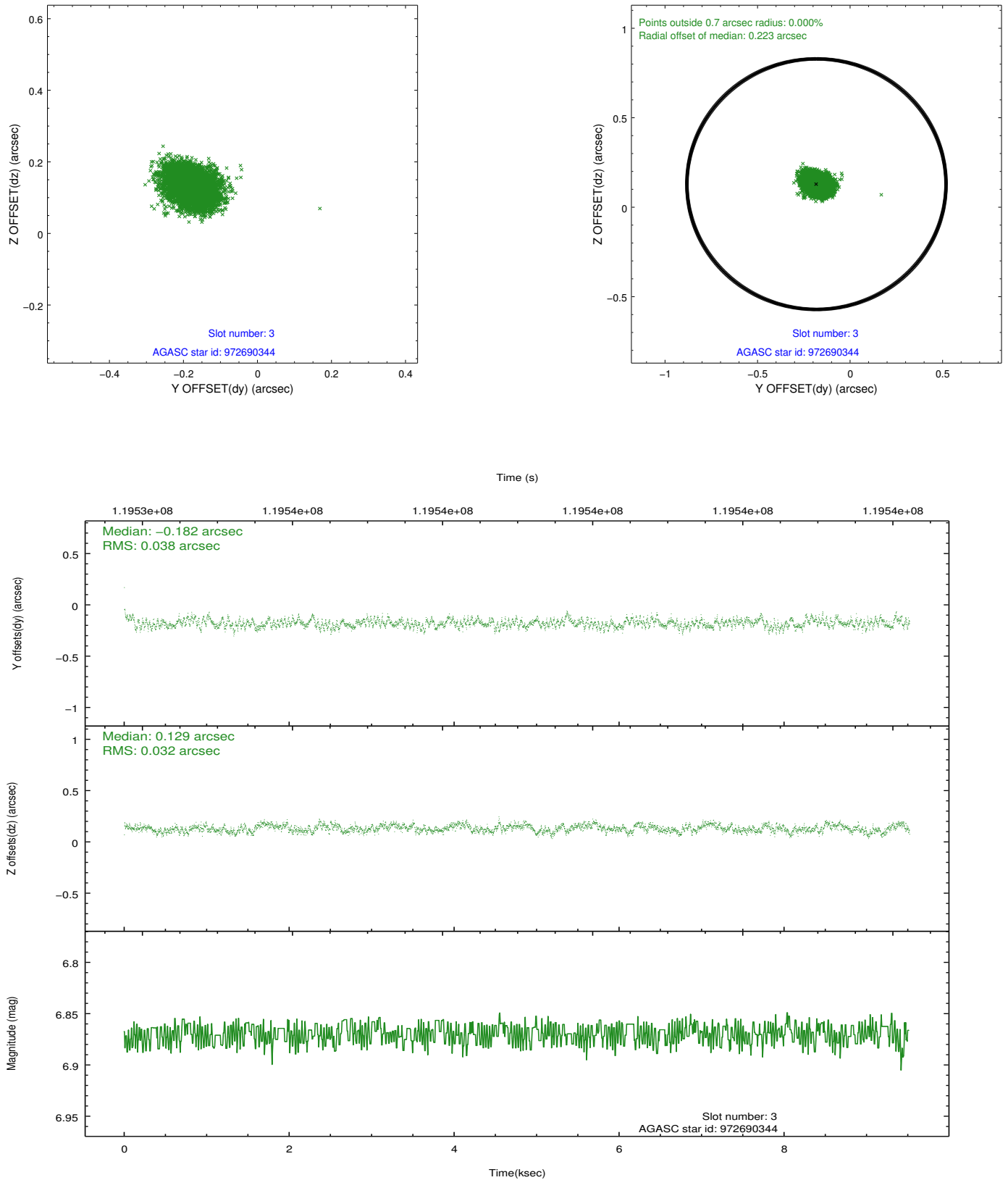


### Slot Statistics

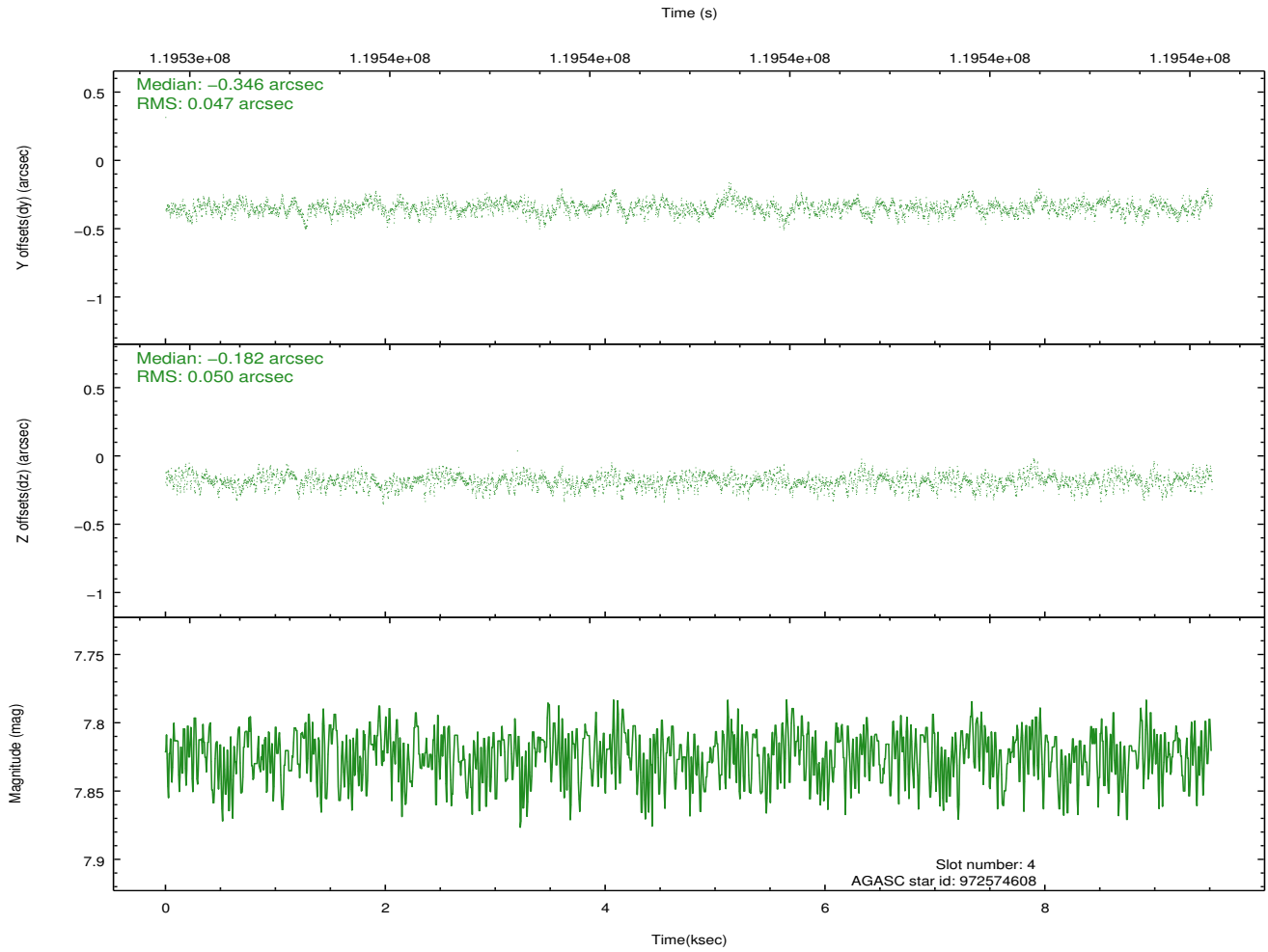
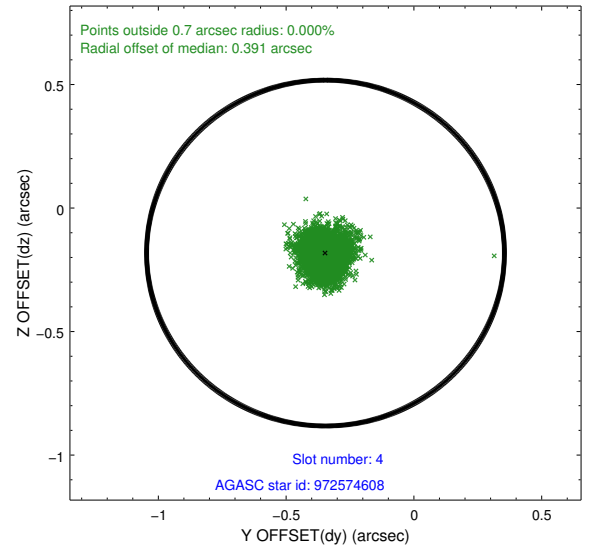
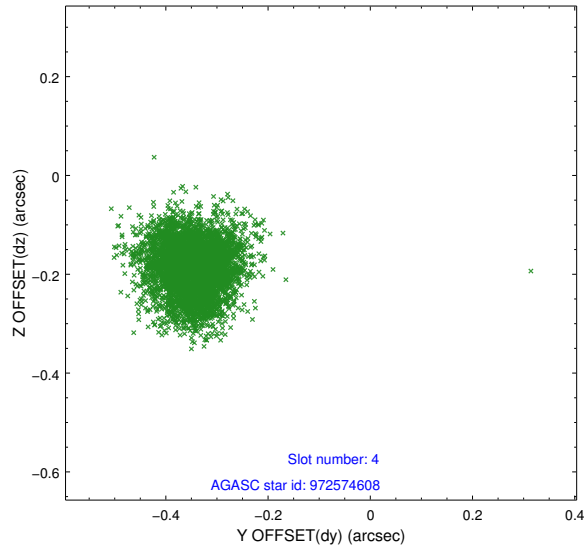
slot	status	id	mag	n_pts	med_dy	med_dz	dr1	dr2	ra	dec	mean_y	mean_z
0	FID	HRC-S-1	6.98	2321	0.133	-0.112	0.005	0.011	0.000000	0.000000	-1157.03	-454.80
1	FID	HRC-S-2	6.99	2323	0.112	-0.158	0.009	0.016	0.000000	0.000000	1242.13	-447.63
2	FID	HRC-S-4	6.93	2323	0.158	-0.034	0.008	0.015	0.000000	0.000000	1241.77	577.22
3	GUIDE	972690344	6.87	4645	-0.182	0.129	0.053	0.085	284.562162	-37.316991	-1997.41	1354.71
4	GUIDE	972574608	7.82	4644	-0.346	-0.182	0.072	0.119	283.352847	-37.274388	-2325.78	-2096.61
5	GUIDE	1037568192	8.68	4645	0.049	0.114	0.061	0.103	284.446060	-38.037443	573.25	878.17
6	GUIDE	1037581728	8.66	4645	0.342	0.046	0.097	0.152	283.813802	-38.579091	2428.17	-1006.77
7	GUIDE	1037576824	8.72	4644	0.137	-0.096	0.058	0.095	284.177029	-38.323536	1561.54	62.18

## 2.4 Star Slots

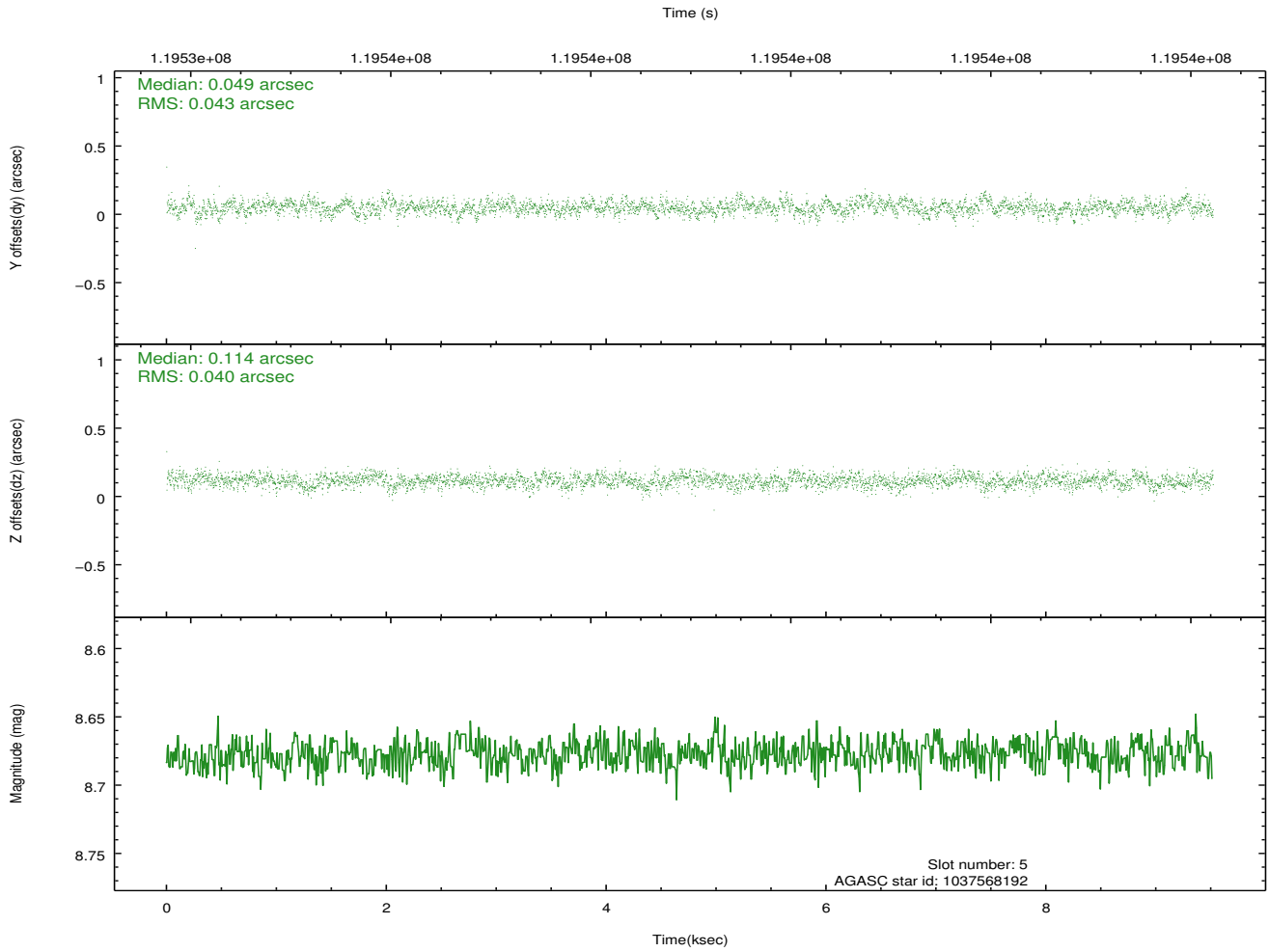
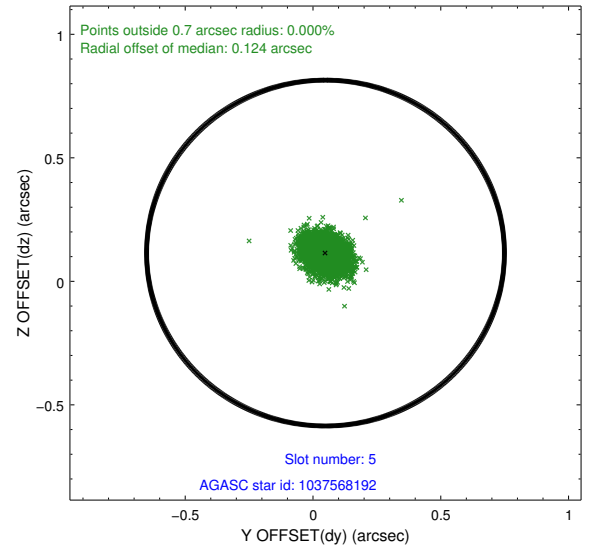
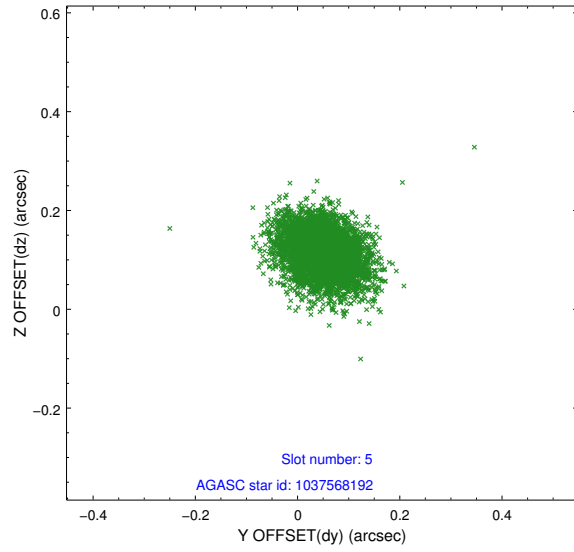
### 2.4.1 Slot 3



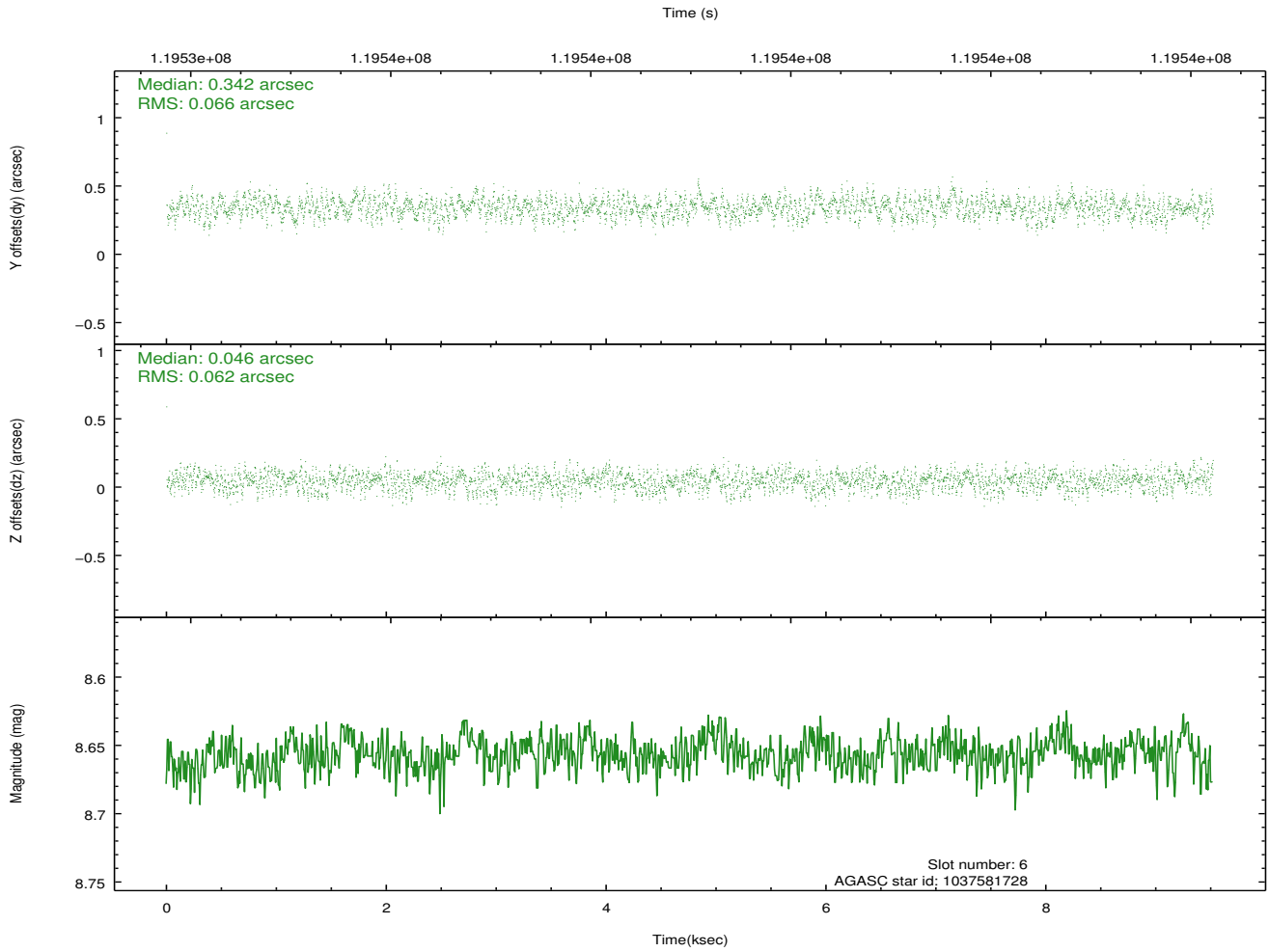
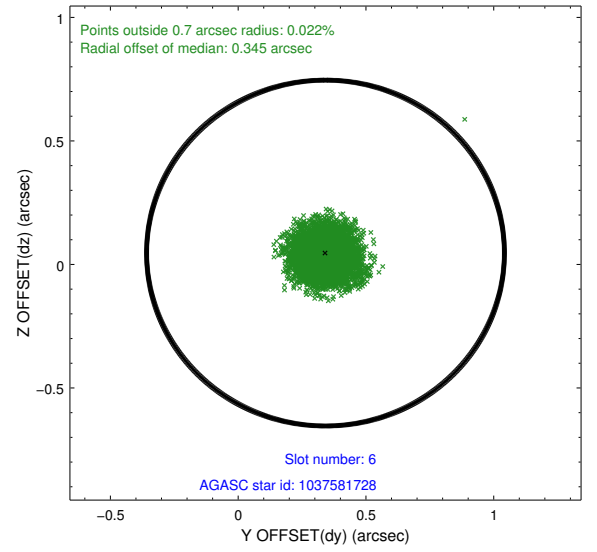
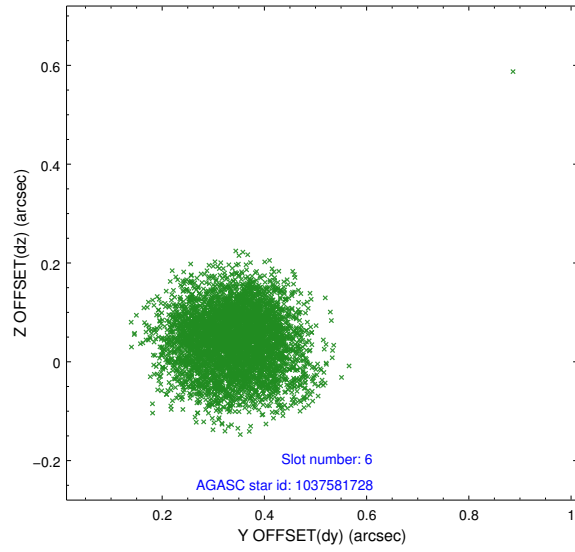
## 2.4.2 Slot 4



### 2.4.3 Slot 5

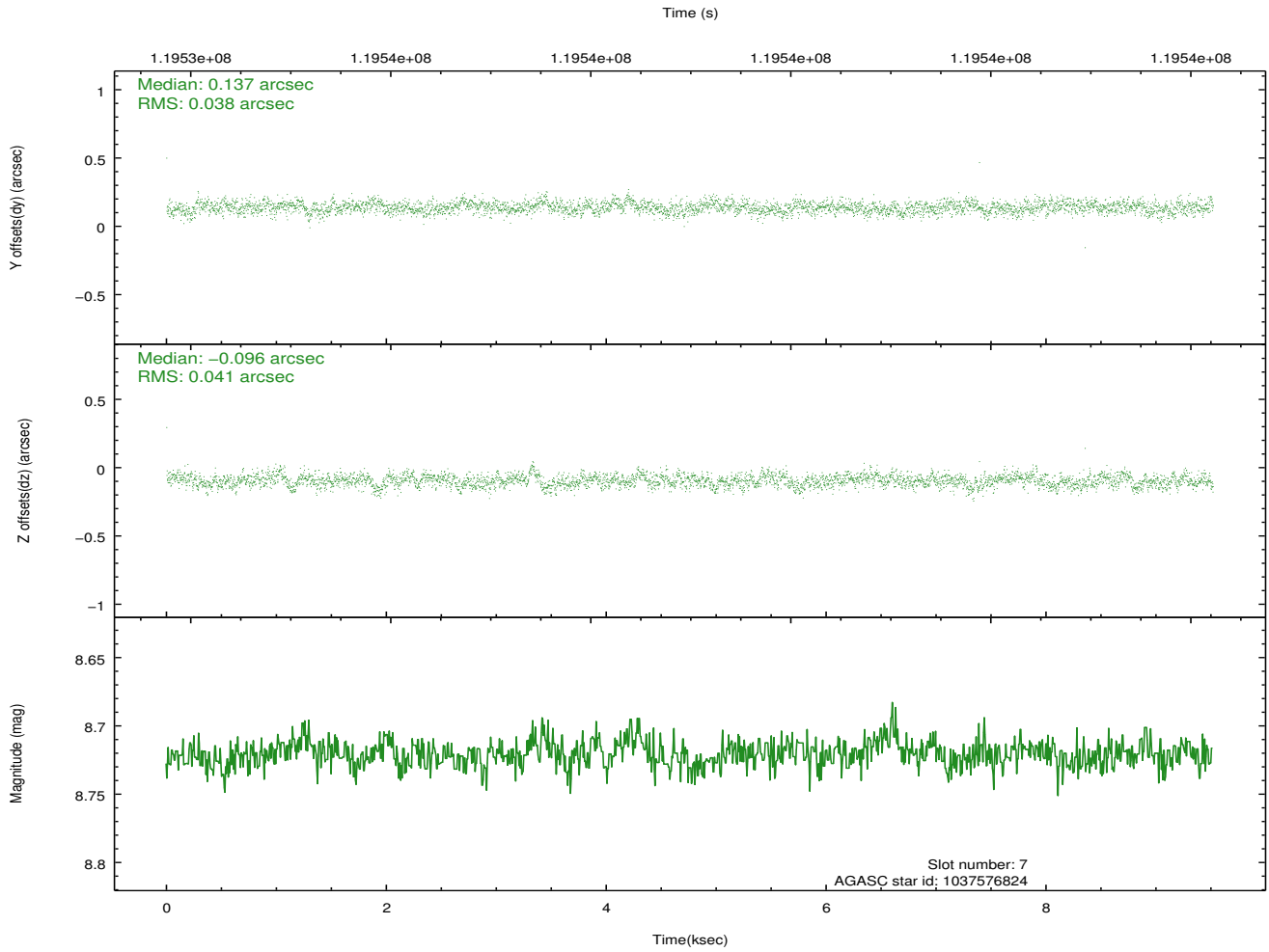
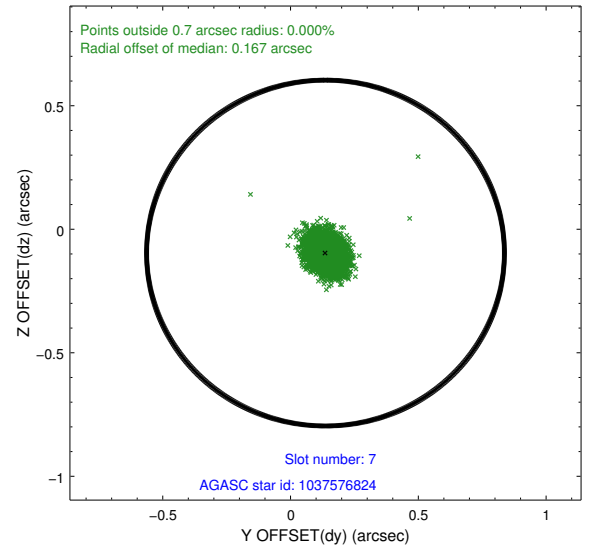
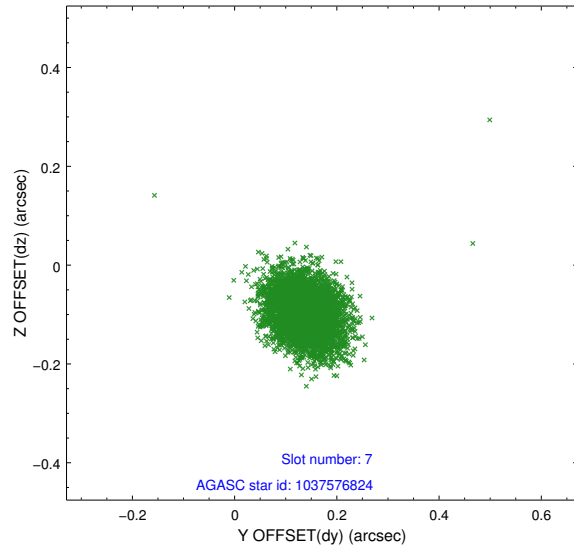


## 2.4.4 Slot 6



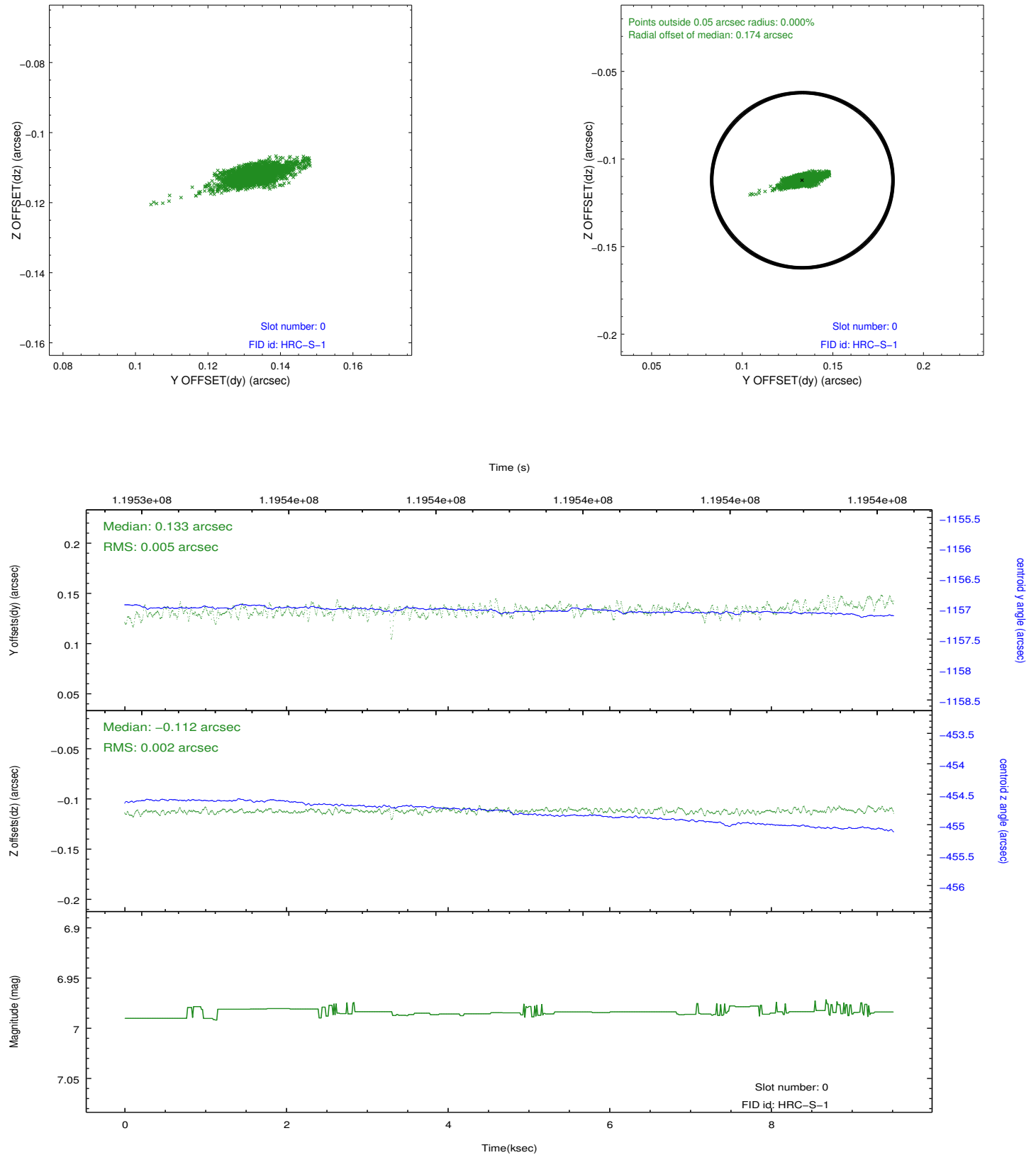


## 2.4.5 Slot 7

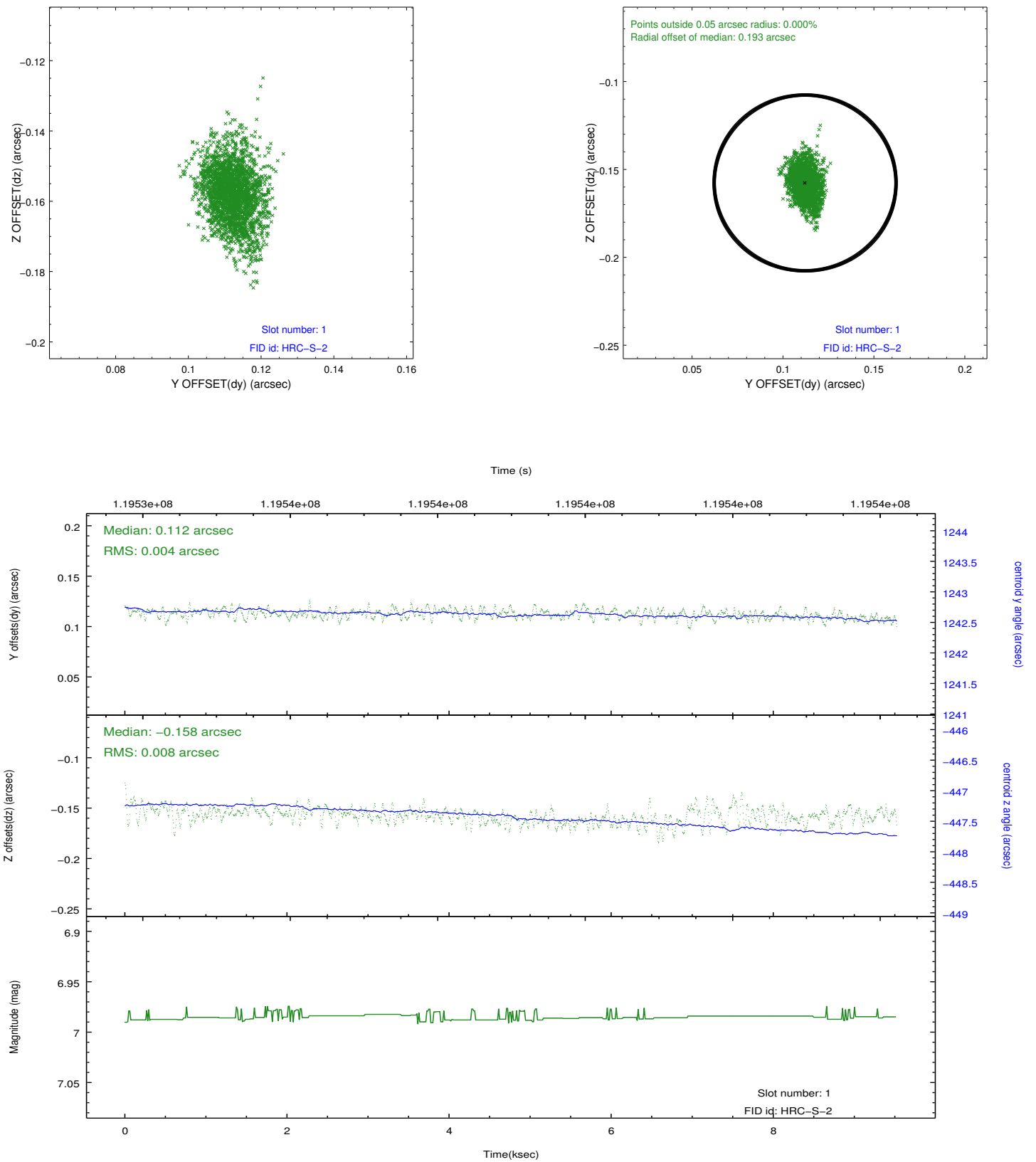


## 2.5 FID Slots

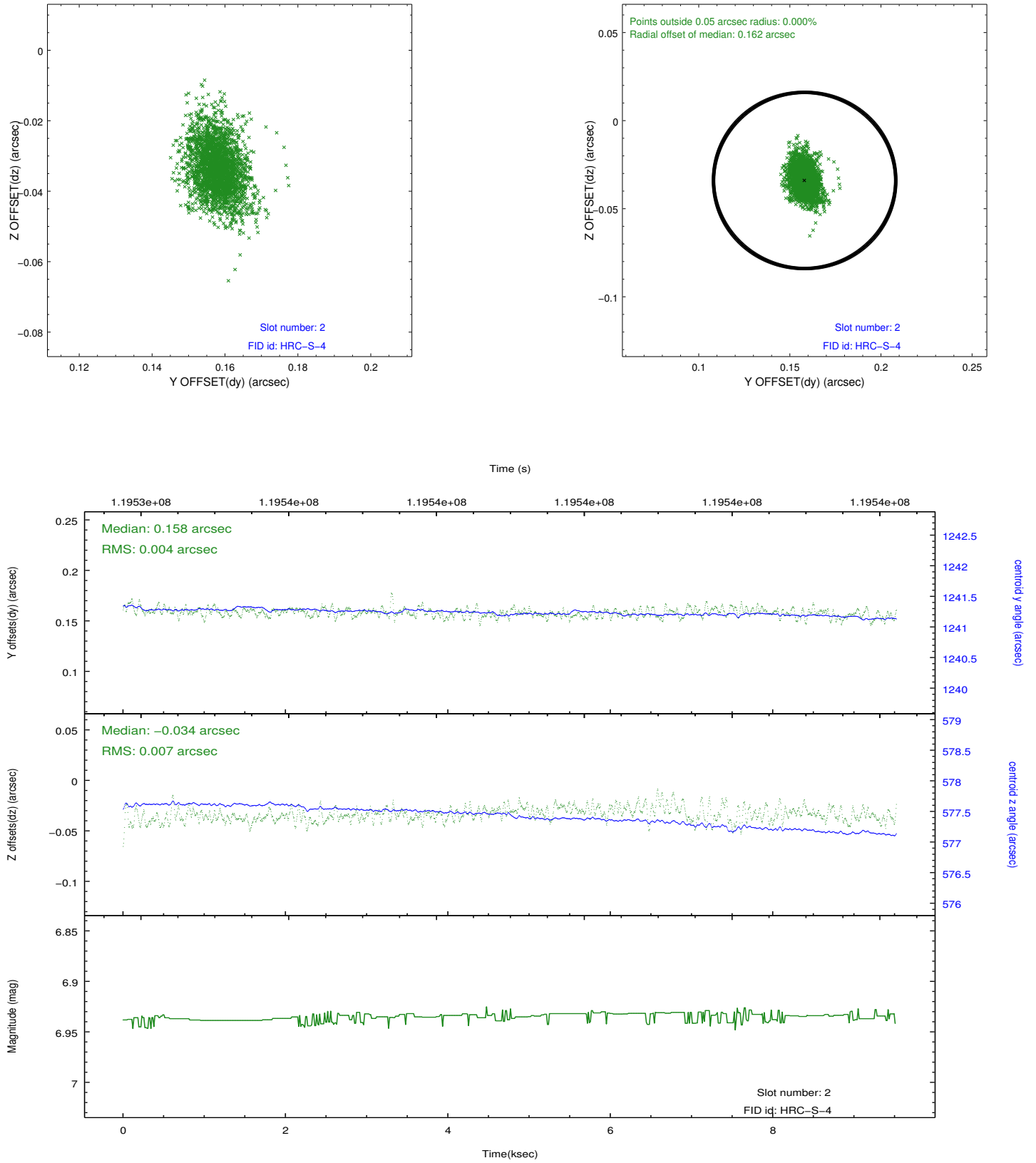
### 2.5.1 Slot 0



## 2.5.2 Slot 1

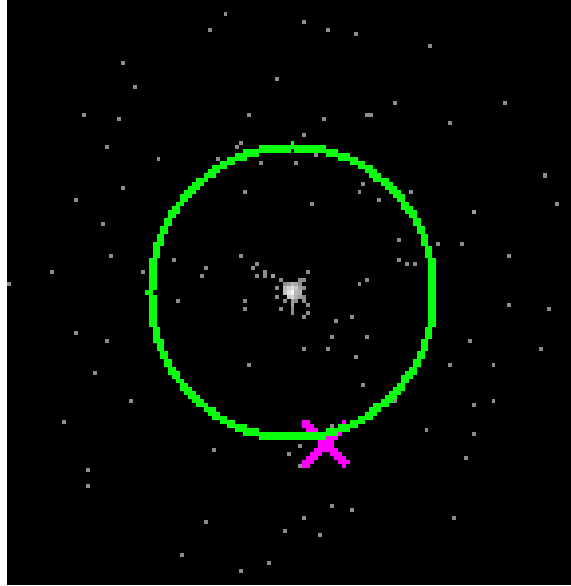


### 2.5.3 Slot 2

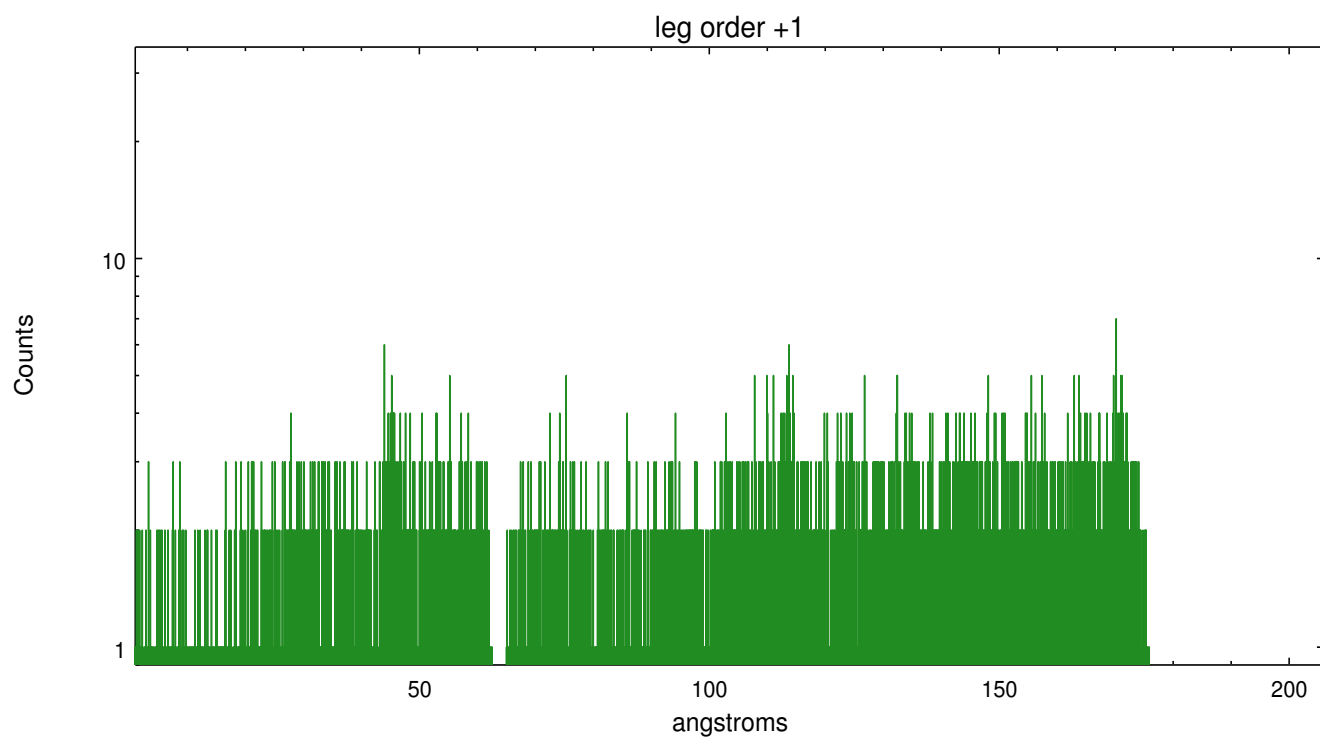
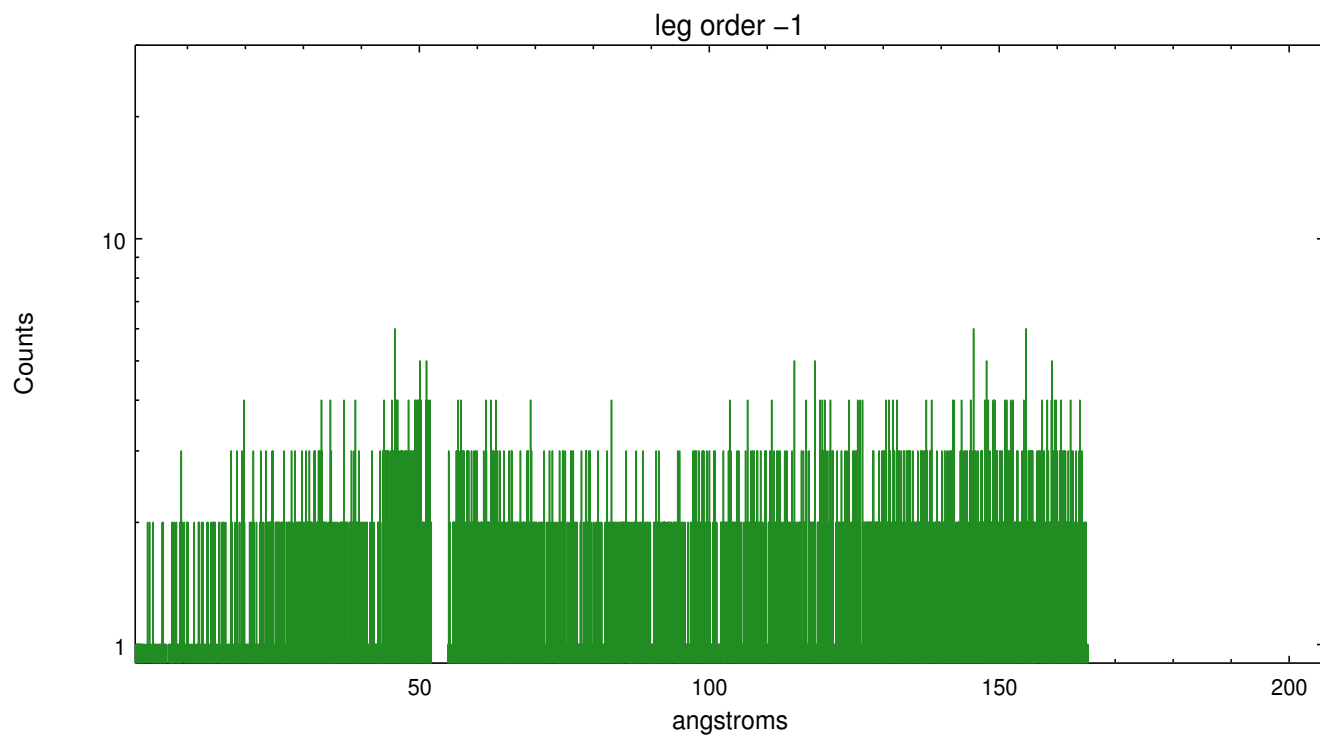


## 3 Gratings

### 3.1 LETG Arm



LETG Zero Order



# A Summary

## A.1 Status

V&V Scientist	Joy Nichols
V&V Date (YYYY-MM-DD)	2012.10.03
V&V Edition	1
V&V Disposition and Status	OK
V&V Charge Time	9.318

## A.2 Comments

Warning: there is a bright cross-dispersion streak near 112A on the positive order side, which may cause overcorrection of background in the extracted spectrum. The source of this streak (actually an extended region of multiple emission peaks) is unknown. It could be due to a strong off-axis source.