

V&V Reference Report

L2 ASCDS Version : 7.6.9

Observation 3199 - L2 Version 001
Chandra X-Ray Center

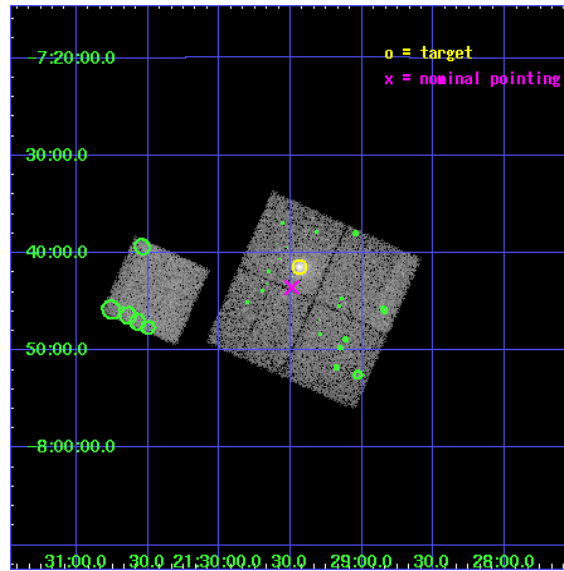
L2 Processing Date : Oct 15 2006

Contents

1	Front	2
2	OBI	3
2.1	OBI	3
2.1.1	Images	3
2.1.2	Bias	3
2.1.3	Parameters	4
2.1.4	Events	4
2.2	Compared Parameters	5
2.3	Aspect	6
2.4	Star Slots	9
2.4.1	Slot 3	9
2.4.2	Slot 4	10
2.4.3	Slot 5	11
2.4.4	Slot 6	12
2.4.5	Slot 7	13
2.5	FID Slots	14
2.5.1	Slot 0	14
2.5.2	Slot 1	15
2.5.3	Slot 2	16
3	Point Sources	17
A	Summary	18
A.1	Status	18
A.2	Comments	18

1 Front

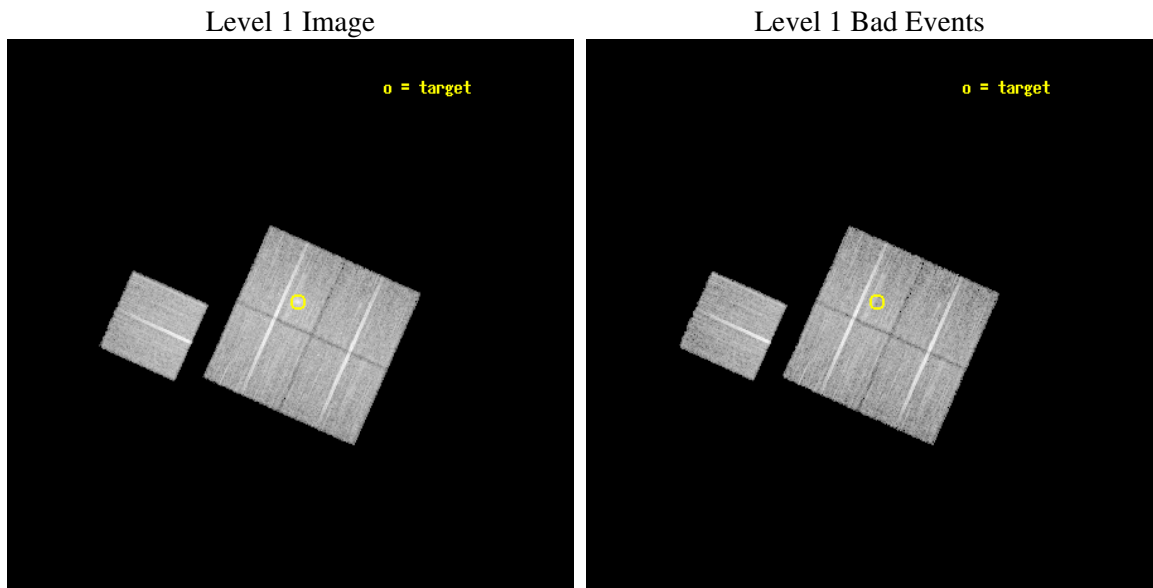
seq_num	800199
obs_id	3199
title	OBSERVATION OF MACS CLUSTERS, $Z>0.5$
observer	DR. LEON VANSPEYBROECK
object	MACS-J2129.4-0741
dtcycle	0
cycle	P
ra_targ	322.359167
dec_targ	-7.690833
ra_nom	322.37292471557
dec_nom	-7.7259478501992
roll_nom	294.15836367796
revision	2
ontime	20118.959001094
livetime	19856.089990383
ontime0	20115.818010926
ontime1	20115.818060756
ontime2	20122.099961311
ontime3	20118.959001094
ontime6	20122.099961311
l2events	64618



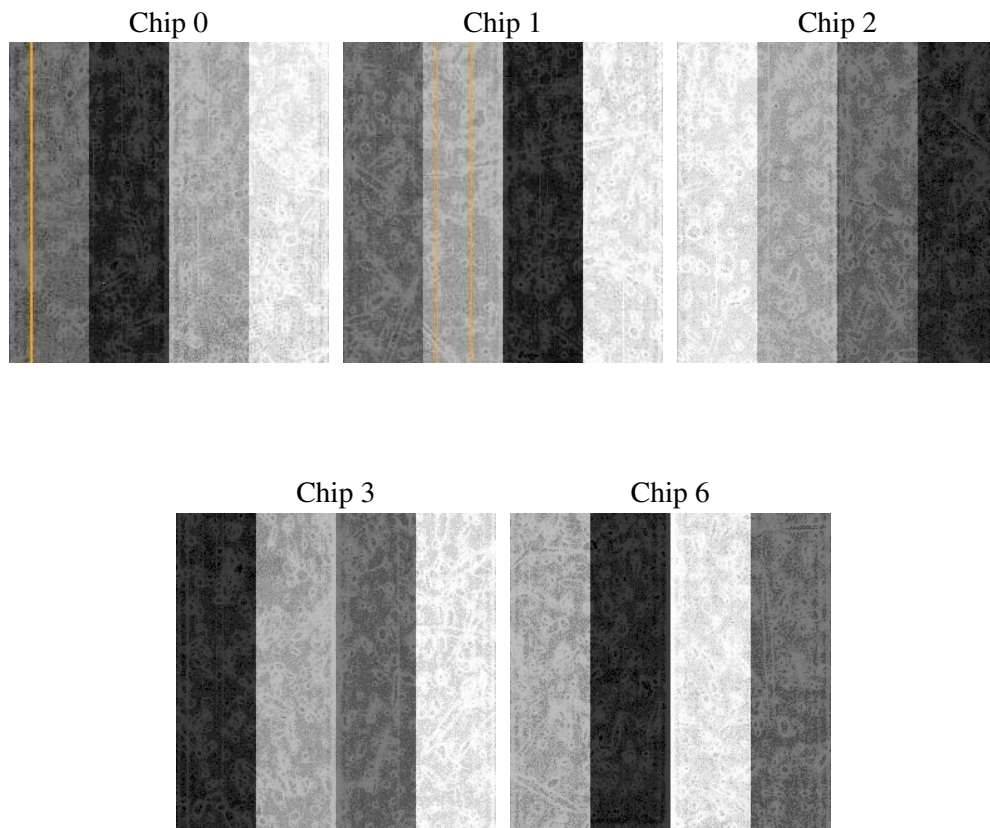
2 OBI

2.1 OBI

2.1.1 Images



2.1.2 Bias



2.1.3 Parameters

obi_num	1
ascdsver	7.6.9
caldbver	3.2.3
date	2006-10-16T01:21:05
revision	2

sched_exp_time	20000.000000
ontime	20124.387550592
ontime0	20121.246560425
ontime1	20121.246610254
ontime2	20127.528510809
ontime3	20124.387550592
ontime6	20127.528510809
l1events	511600

2.1.4 Events

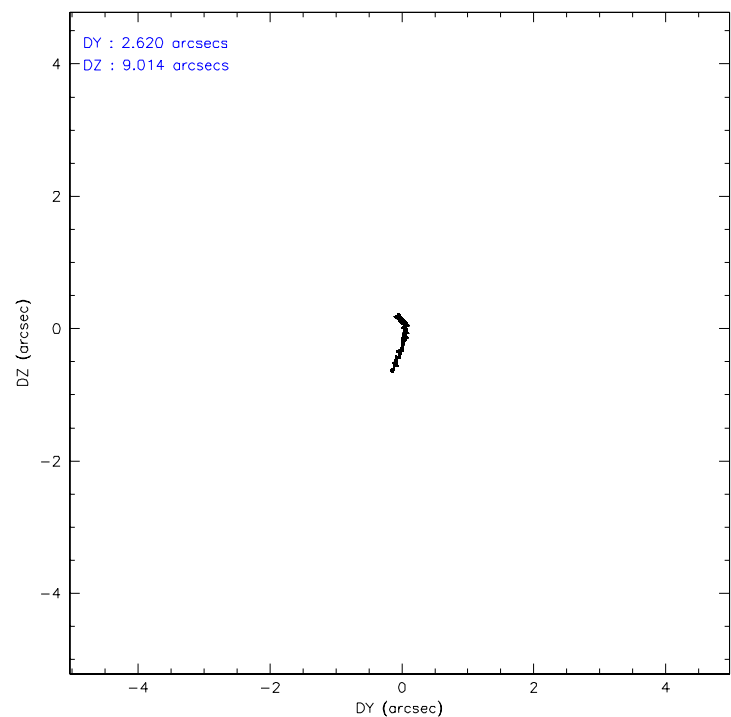
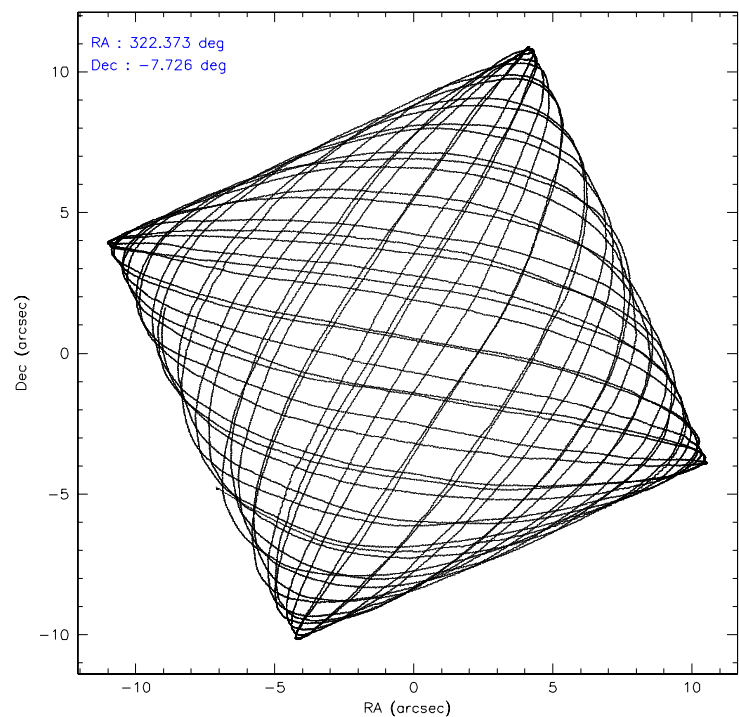
	ccd 0	ccd 1	ccd 2	ccd 3	ccd 6
level 1 events	95606	94798	105075	105998	110123
rejected events	82751	79987	92390	89885	92202
rejected %	86%	84%	87%	84%	83%

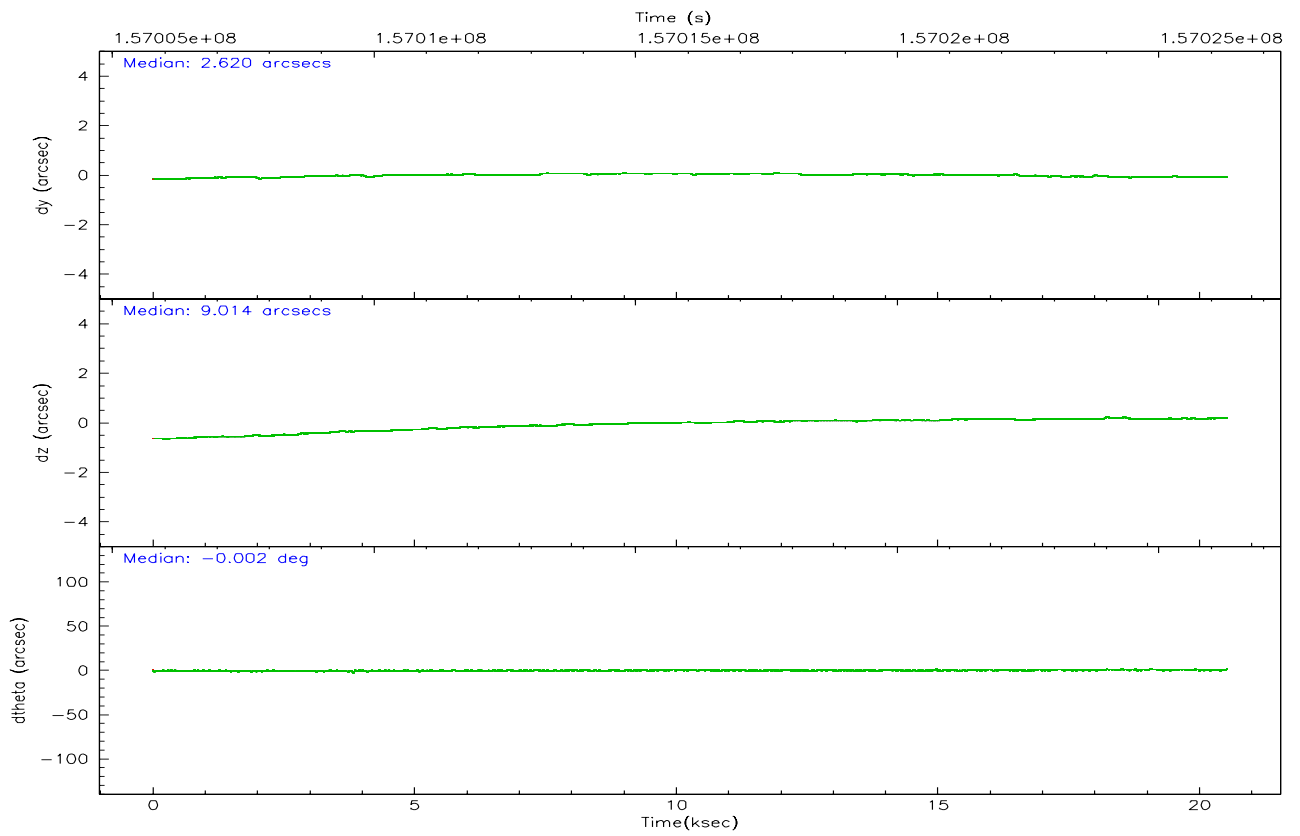
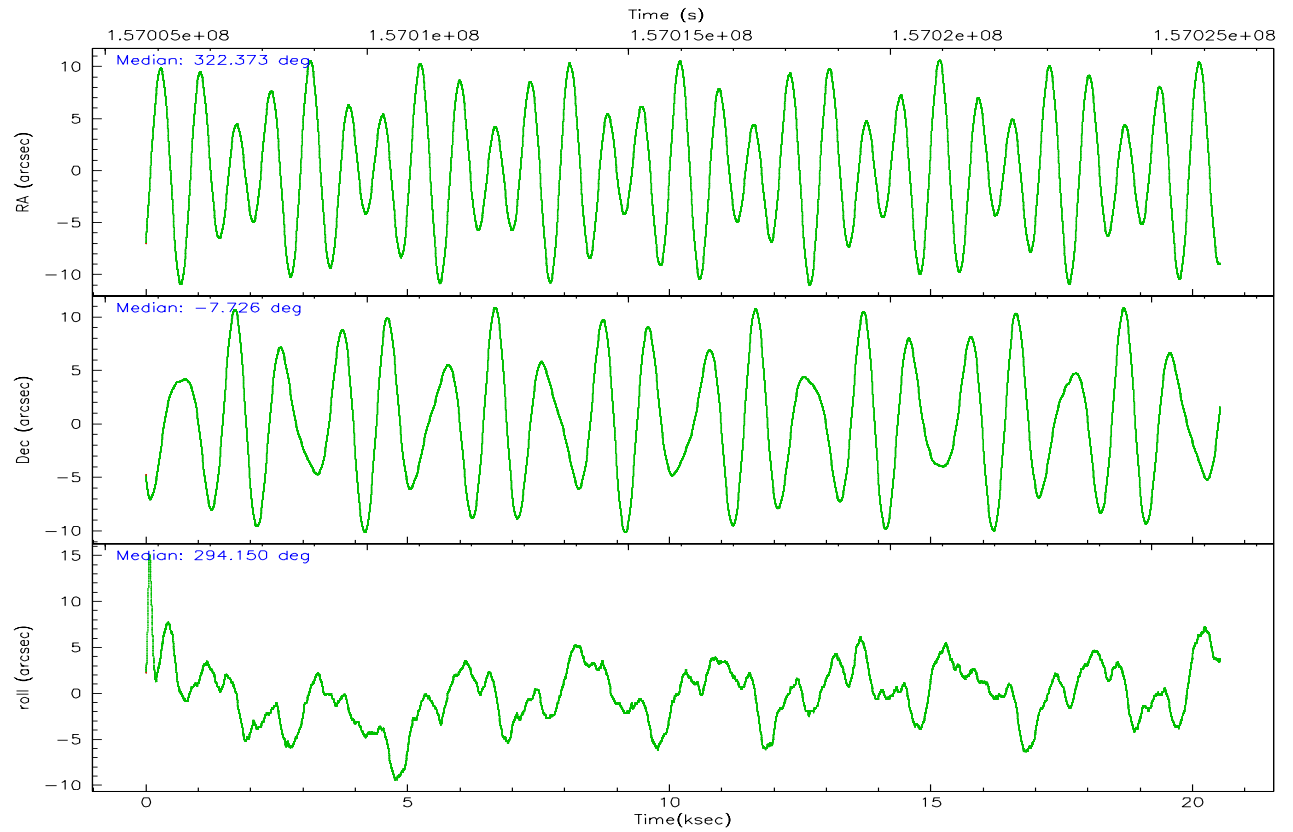
	ccd 0	ccd 1	ccd 2	ccd 3	ccd 6
grade 0 events	6191	7192	6204	9253	10542
	6%	7%	5%	8%	9%
grade 1 events	41	71	48	73	58
	0%	0%	0%	0%	0%
grade 2 events	2468	2786	2429	2432	2708
	2%	2%	2%	2%	2%
grade 3 events	1235	1298	1089	1254	1276
	1%	1%	1%	1%	1%
grade 4 events	1160	1282	1139	1257	1248
	1%	1%	1%	1%	1%
grade 5 events	3368	3555	3191	3672	3770
	3%	3%	3%	3%	3%
grade 6 events	1805	2255	1829	1919	2147
	1%	2%	1%	1%	1%
grade 7 events	79338	76359	89146	86138	88374
	82%	80%	84%	81%	80%

2.2 Compared Parameters

Parameter	Planned	Actual	Parameter	Planned	Actual
Instrument	ACIS	ACIS	Obspar format version number	6	6
Detector	ACIS-01236	ACIS-01236	Obspar file type	PREDICTED	ACTUAL
Grating	NONE	NONE	Obspar update status	NONE	UPDATED
Data mode	VFAINT	VFAINT	Number of optional ACIS chips dropped	0	0
Observation mode	POINTING	POINTING	On-chip summing requested	N	N
Pointing RA	322.350453	322.3729247155655	Subarray requested	NONE	NONE
Pointing Dec	-7.709992	-7.725947850199203	Alternating exposures requested	N	N
Pointing Roll	293.946663	294.1583636779584	Primary exposure time	0.000000	3.1
SIM focus pos (mm)	-0.782348	-0.7809083437167272			
SIM defocus (mm)	0	0.001439871863259334			
SIM translation stage pos (mm)	-227.742463	-227.734108438797			
SIM translation stage offset (mm)	-5.85	-5.858344564132665			
Observation start time	157006305.184000	157005171.56048			
Observation start date	2002-12-23T04:50:41	2002-12-23T04:32:51			
Observation end time	157026305.184000	157026740.63638			
Observation end date	2002-12-23T10:24:01	2002-12-23T10:32:20			
Read mode	TIMED	TIMED			

2.3 Aspect



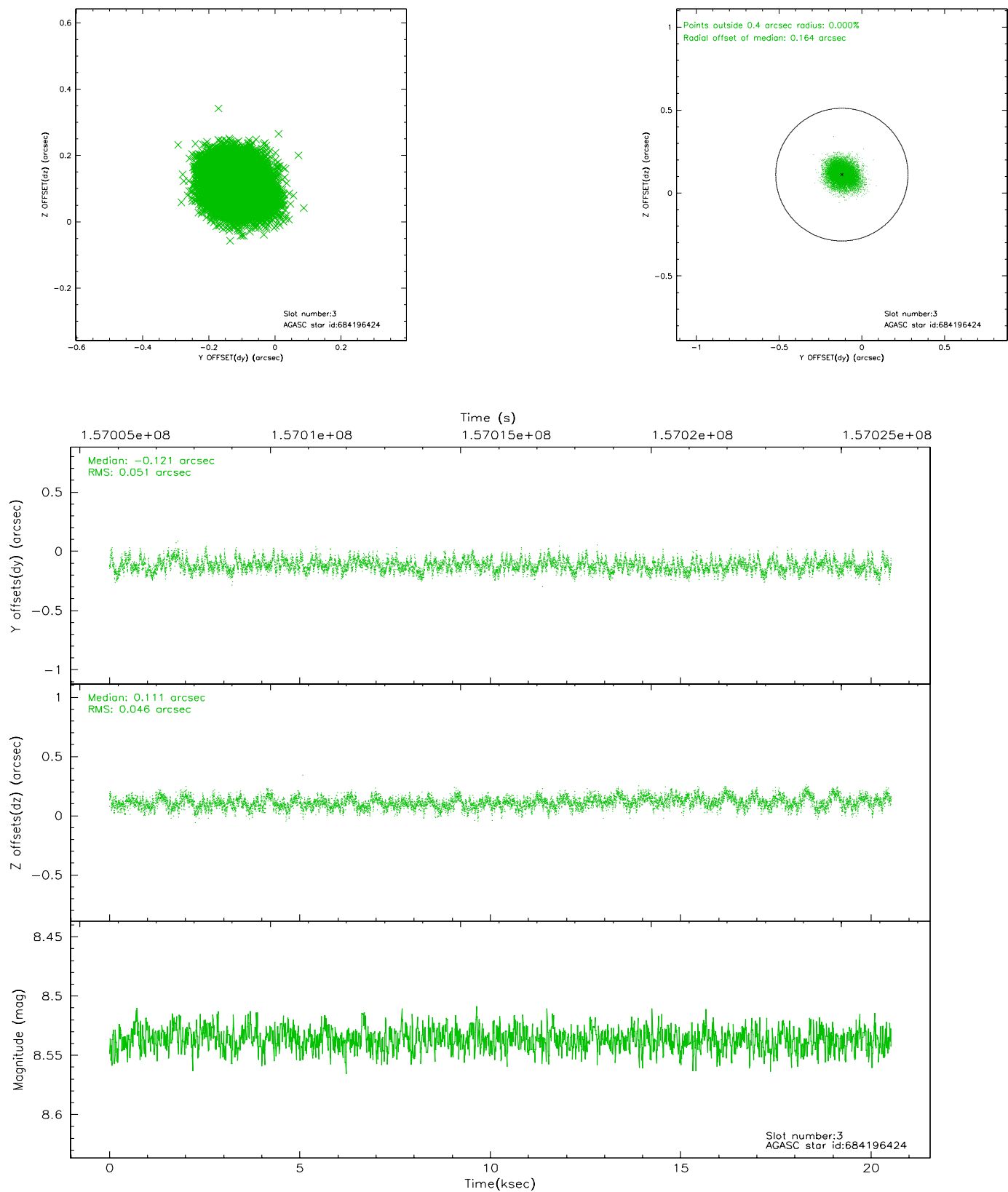


Slot Statistics

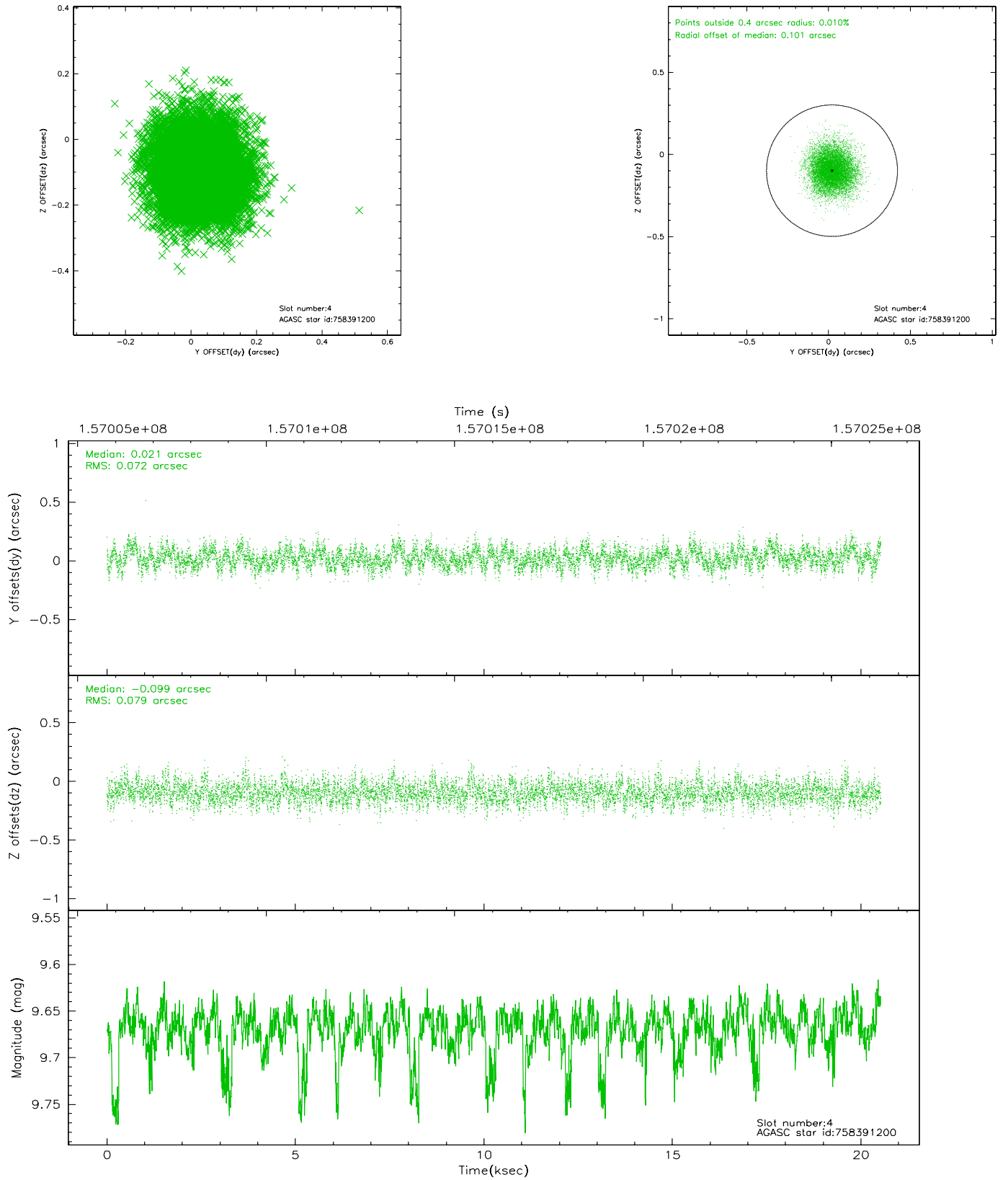
slot	status	id	mag	n_pts	med_dy	med_dz	dr1	dr2	ra	dec	mean_y	mean_z
0	FID	ACIS-I-1	7.24	5003	0.004	0.024	0.024	0.033	0.000000	0.000000	937.09	-952.60
1	FID	ACIS-I-5	7.23	5002	-0.090	0.047	0.014	0.023	0.000000	0.000000	-1811.01	944.81
2	FID	ACIS-I-6	7.25	5004	-0.005	0.001	0.015	0.022	0.000000	0.000000	402.44	1589.47
3	GUIDE	684196424	8.54	10005	-0.121	0.111	0.074	0.117	322.506260	-7.293564	-1144.19	1117.24
4	GUIDE	758391200	9.67	10003	0.021	-0.099	0.114	0.185	321.793565	-8.009857	182.73	-2252.58
5	GUIDE	758392024	9.93	9993	0.087	-0.085	0.147	0.243	321.929910	-8.157103	864.23	-2023.05
6	GUIDE	756678992	10.16	10007	-0.114	0.046	0.136	0.221	321.664663	-7.837970	-569.27	-2422.91
7	GUIDE	758391840	9.83	9995	0.128	0.021	0.112	0.189	322.196358	-8.128595	1154.96	-1113.27

2.4 Star Slots

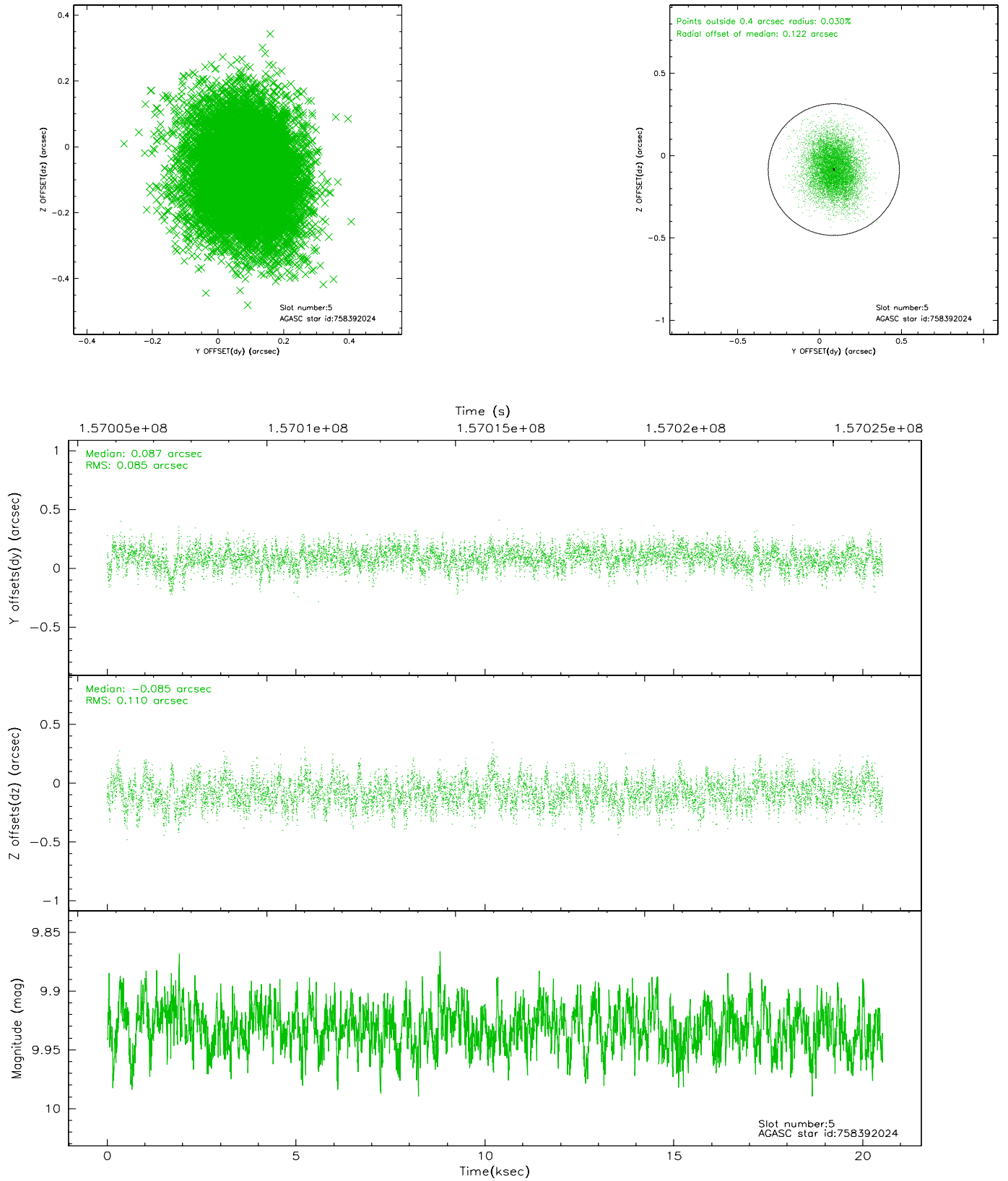
2.4.1 Slot 3



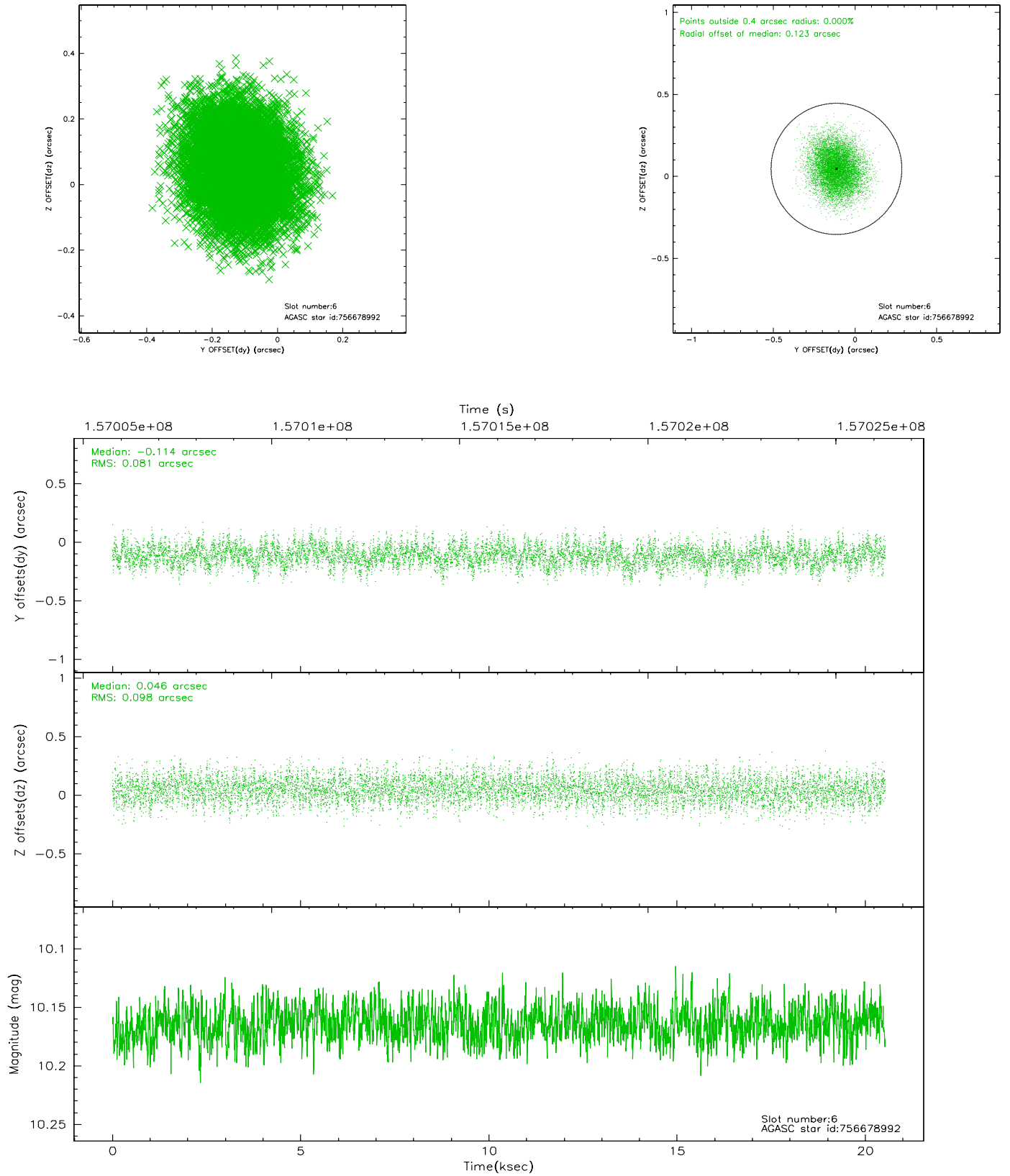
2.4.2 Slot 4



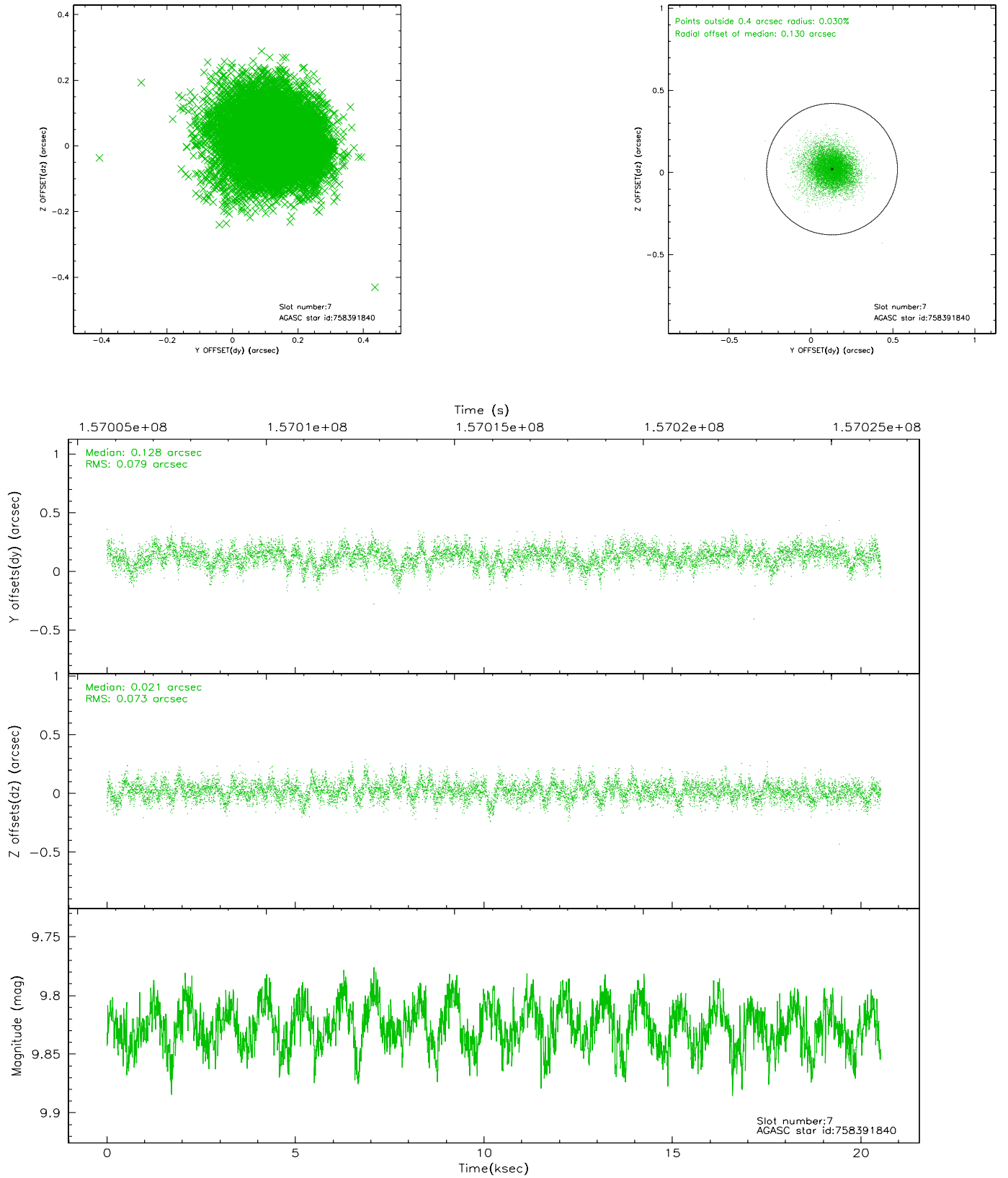
2.4.3 Slot 5



2.4.4 Slot 6

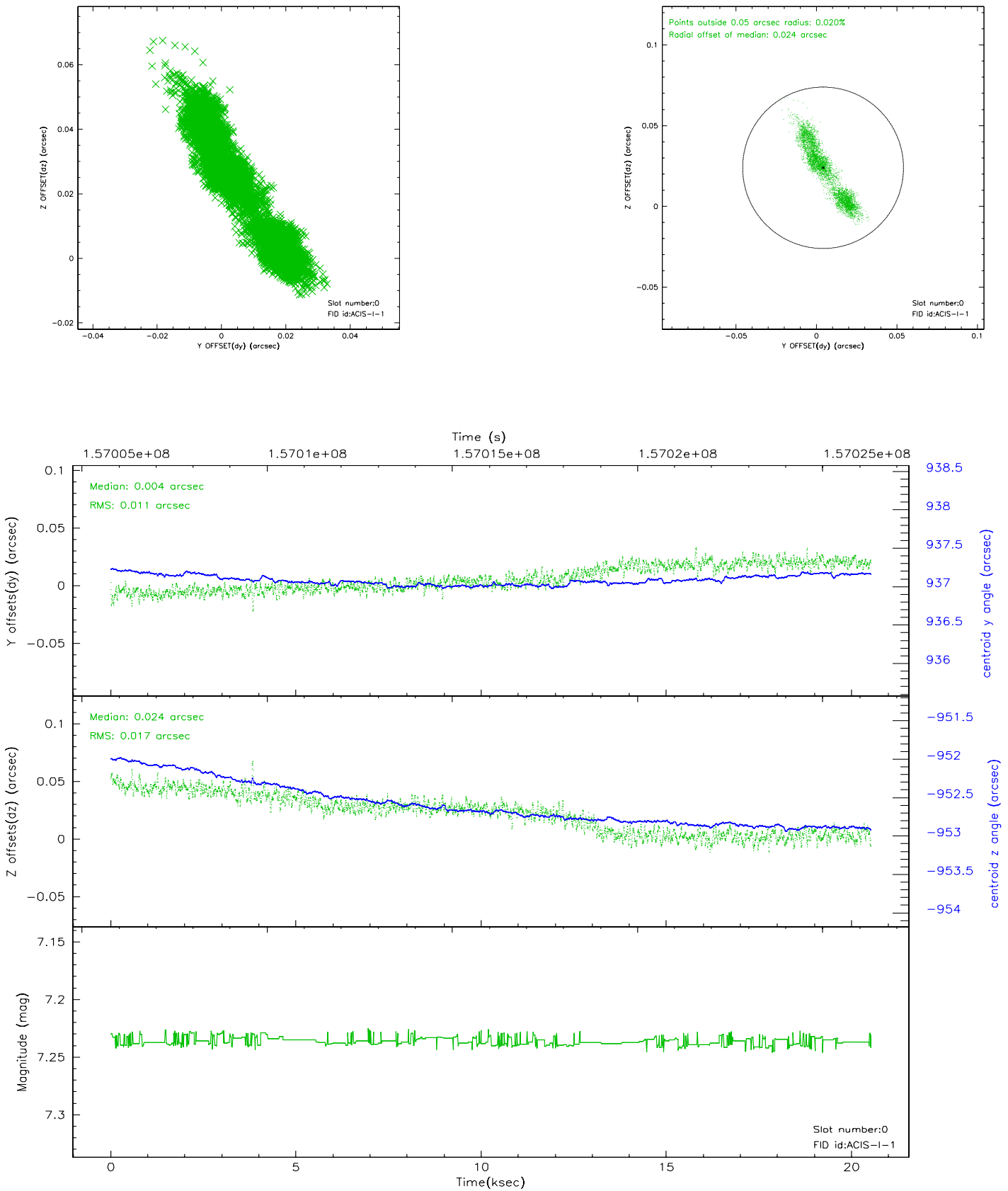


2.4.5 Slot 7

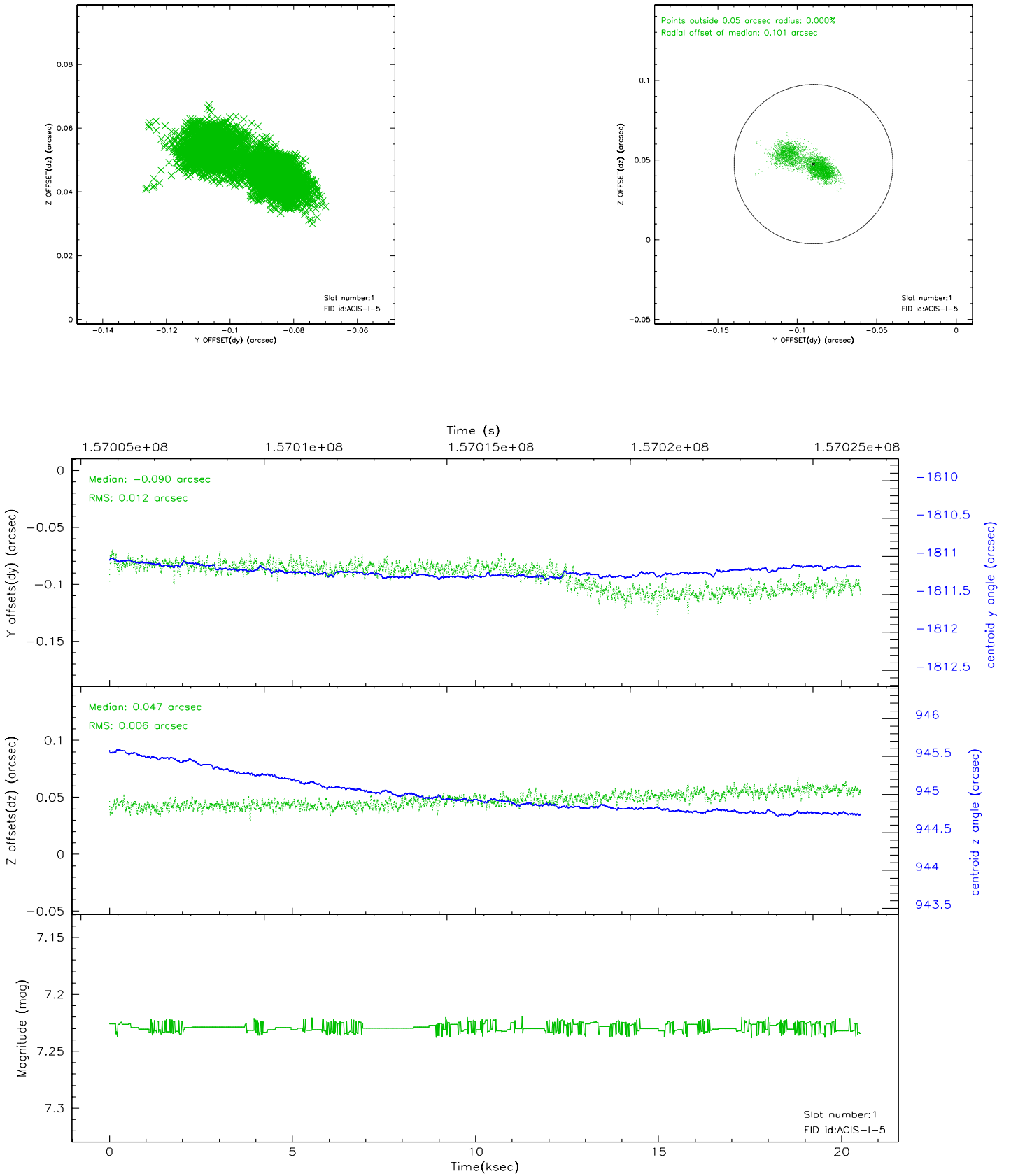


2.5 FID Slots

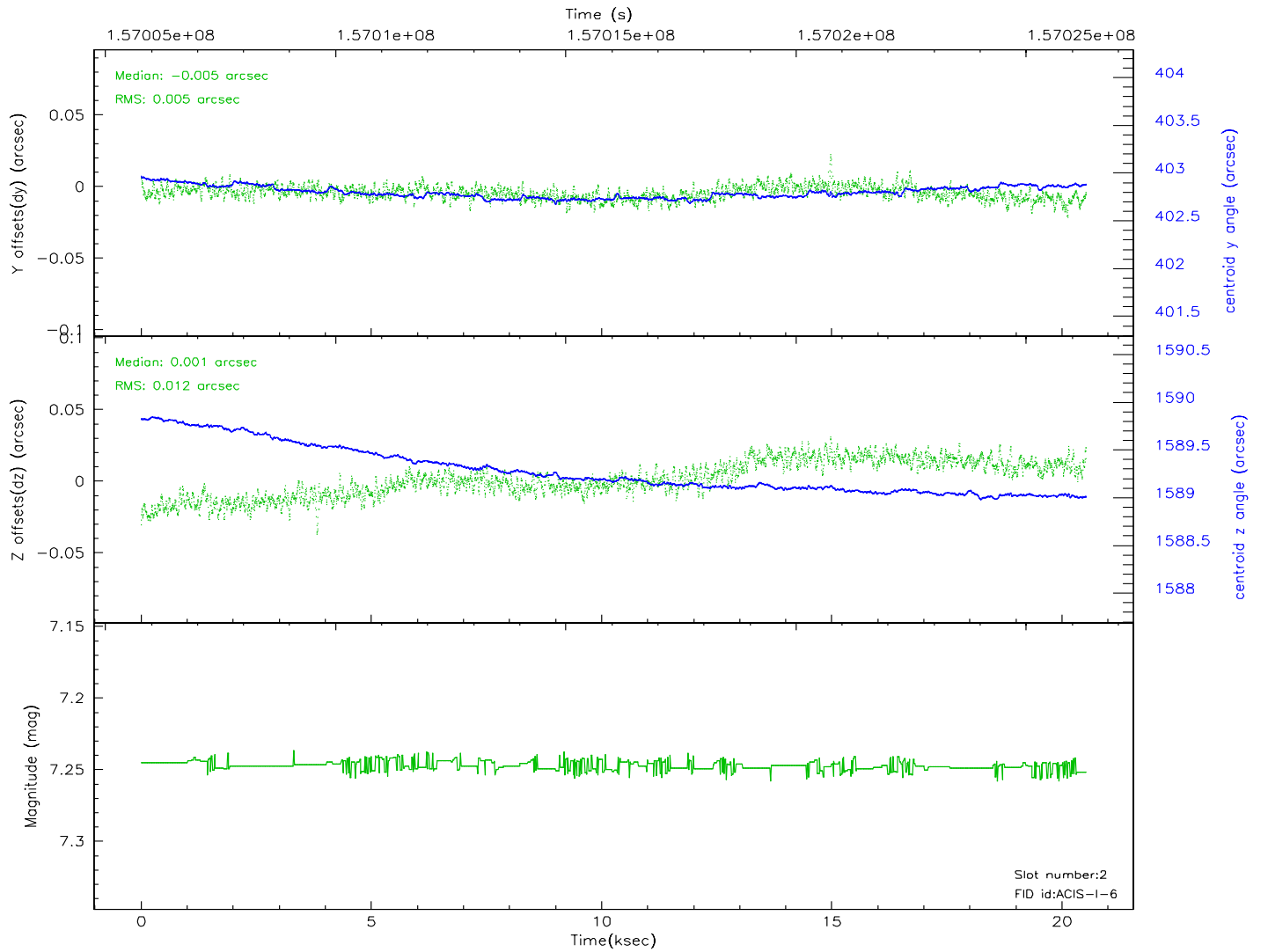
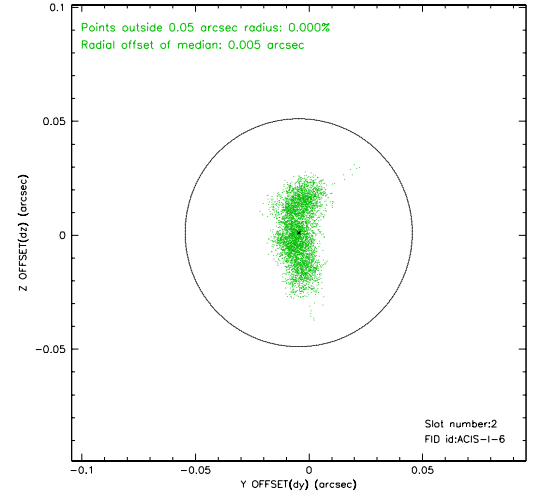
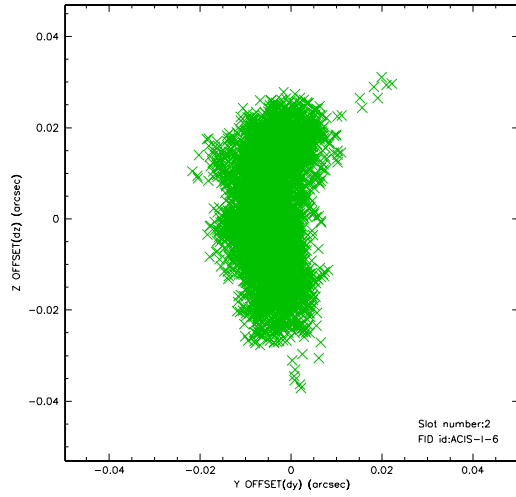
2.5.1 Slot 0



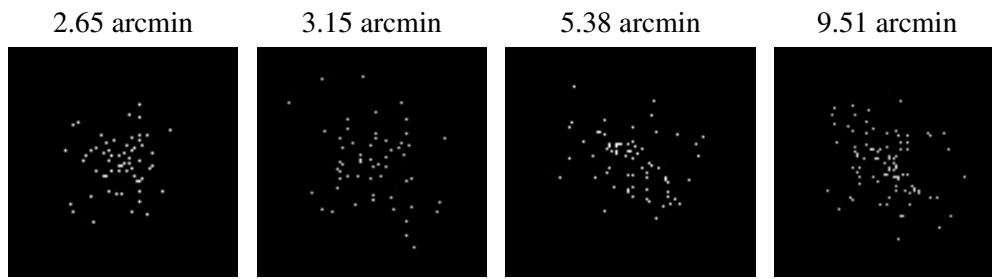
2.5.2 Slot 1



2.5.3 Slot 2



3 Point Sources



A Summary

A.1 Status

V&V Scientist	Jen Lauer
V&V Date (YYYY-MM-DD)	2006.10.16
V&V Edition	1
V&V Disposition and Status	OK
V&V Charge Time	20.122

A.2 Comments