

V&V Reference Report

L2 ASCDS Version : 7.6.9

Observation 2989 - L2 Version 001
Chandra X-Ray Center

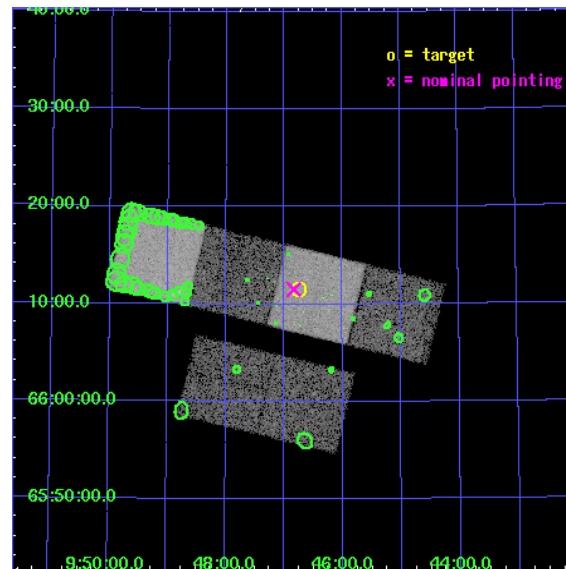
L2 Processing Date : Oct 2 2006

Contents

1	Front	2
2	OBI	3
2.1	OBI	3
2.1.1	Images	3
2.1.2	Bias	3
2.1.3	Parameters	4
2.1.4	Events	4
2.2	Compared Parameters	5
2.3	Aspect	6
2.4	Star Slots	9
2.4.1	Slot 3	9
2.4.2	Slot 4	10
2.4.3	Slot 5	11
2.4.4	Slot 6	12
2.4.5	Slot 7	13
2.5	FID Slots	14
2.5.1	Slot 0	14
2.5.2	Slot 1	15
2.5.3	Slot 2	16
3	Point Sources	17
A	Summary	18
A.1	Status	18
A.2	Comments	18

1 Front

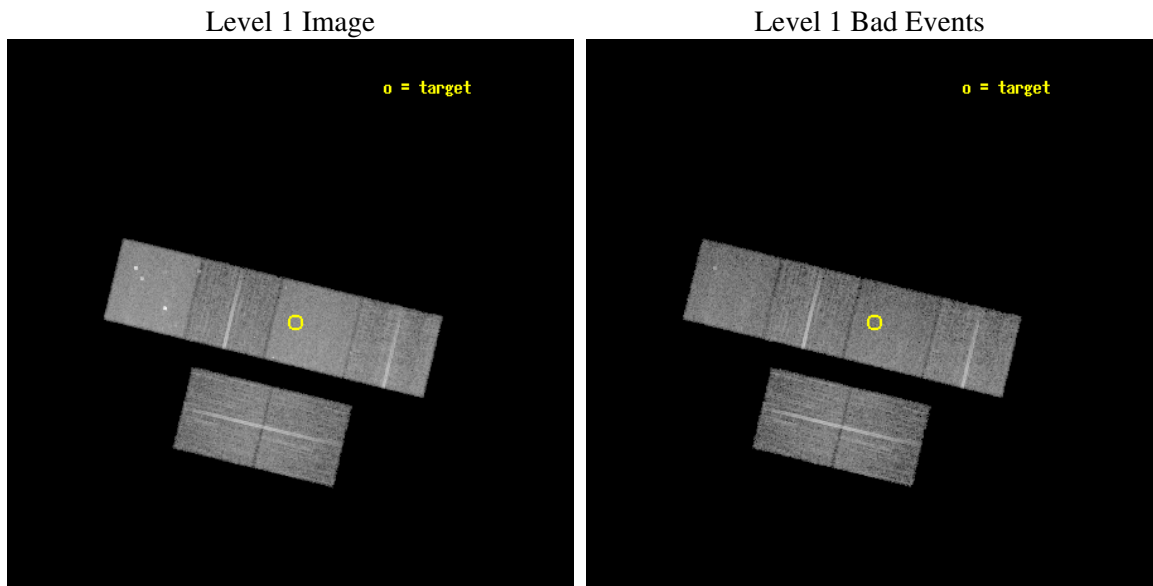
seq_num	700428
obs_id	2989
title	CHANDRA OBSERVATIONS OF A POPULATION OF TYPE 2 QUASARS DISCOVERED IN THE DPOSS
observer	PROF. S. DJORGOVSKI
object	PSS 0946+6611
dtcycle	0
cycle	P
ra_targ	146.684583
dec_targ	66.191667
ra_nom	146.70850949251
dec_nom	66.192214068097
roll_nom	13.607121182654
revision	2
ontime	14550.399945796
livetime	14366.154020483
ontime2	14550.399945796
ontime3	14547.158985496
ontime5	14550.399945796
ontime6	14550.399945796
ontime7	14550.399945796
ontime8	14550.399945796
l2events	129136



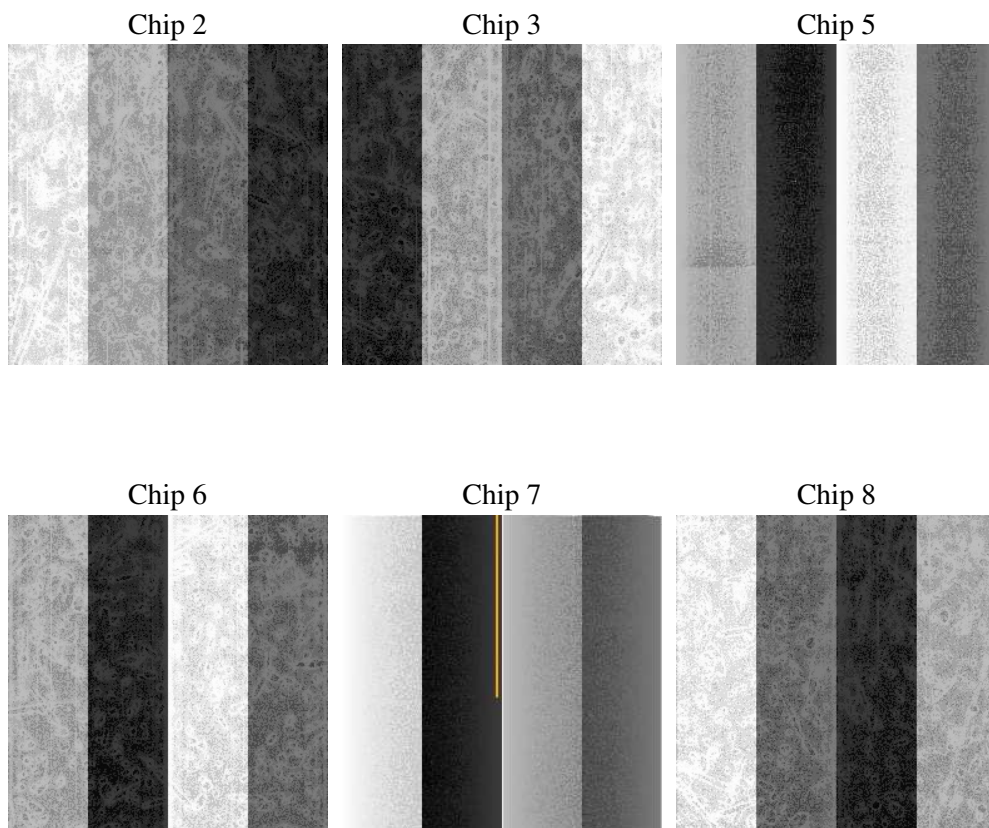
2 OBI

2.1 OBI

2.1.1 Images



2.1.2 Bias



2.1.3 Parameters

obi_num	1
ascdsver	7.6.9
caldsver	3.2.3
date	2006-10-02T19:00:42
revision	2

sched_exp_time	14400.000000
ontime	16052.673682362
ontime2	16052.673662454
ontime3	16049.432702154
ontime5	16052.673682362
ontime6	16052.673662454
ontime7	16052.673682362
ontime8	16055.914672524
l1events	661337

2.1.4 Events

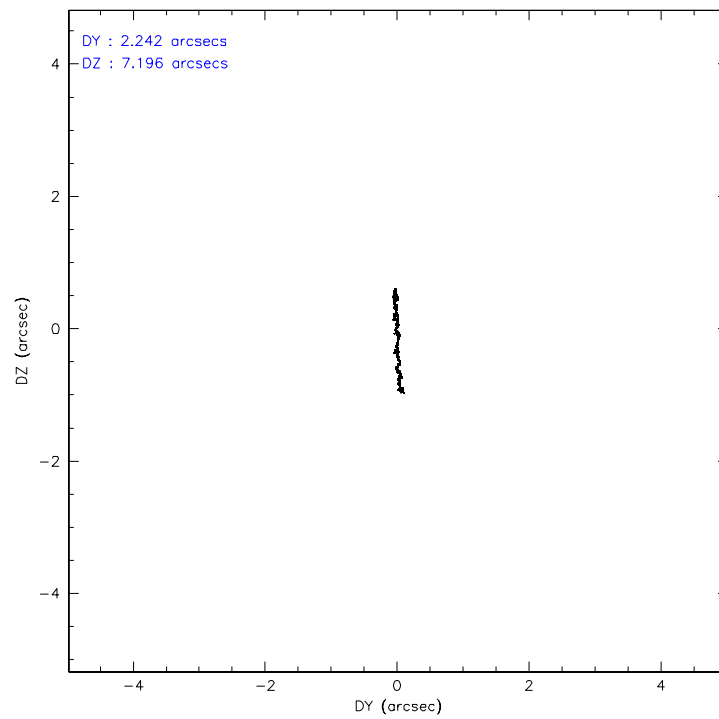
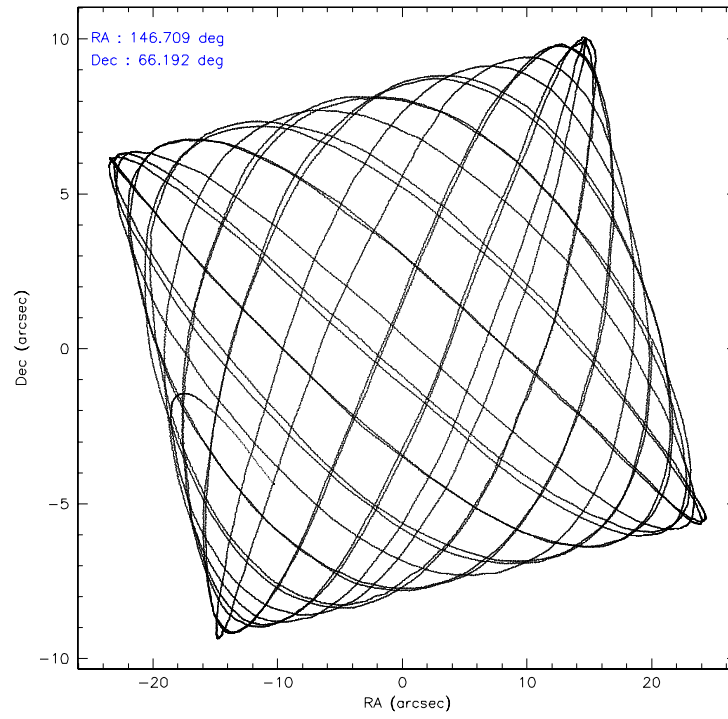
	ccd 2	ccd 3	ccd 5	ccd 6	ccd 7	ccd 8
level 1 events	94731	90577	140015	94584	125106	116324
rejected events	84734	80893	83135	84452	81386	94351
rejected %	89%	89%	59%	89%	65%	81%

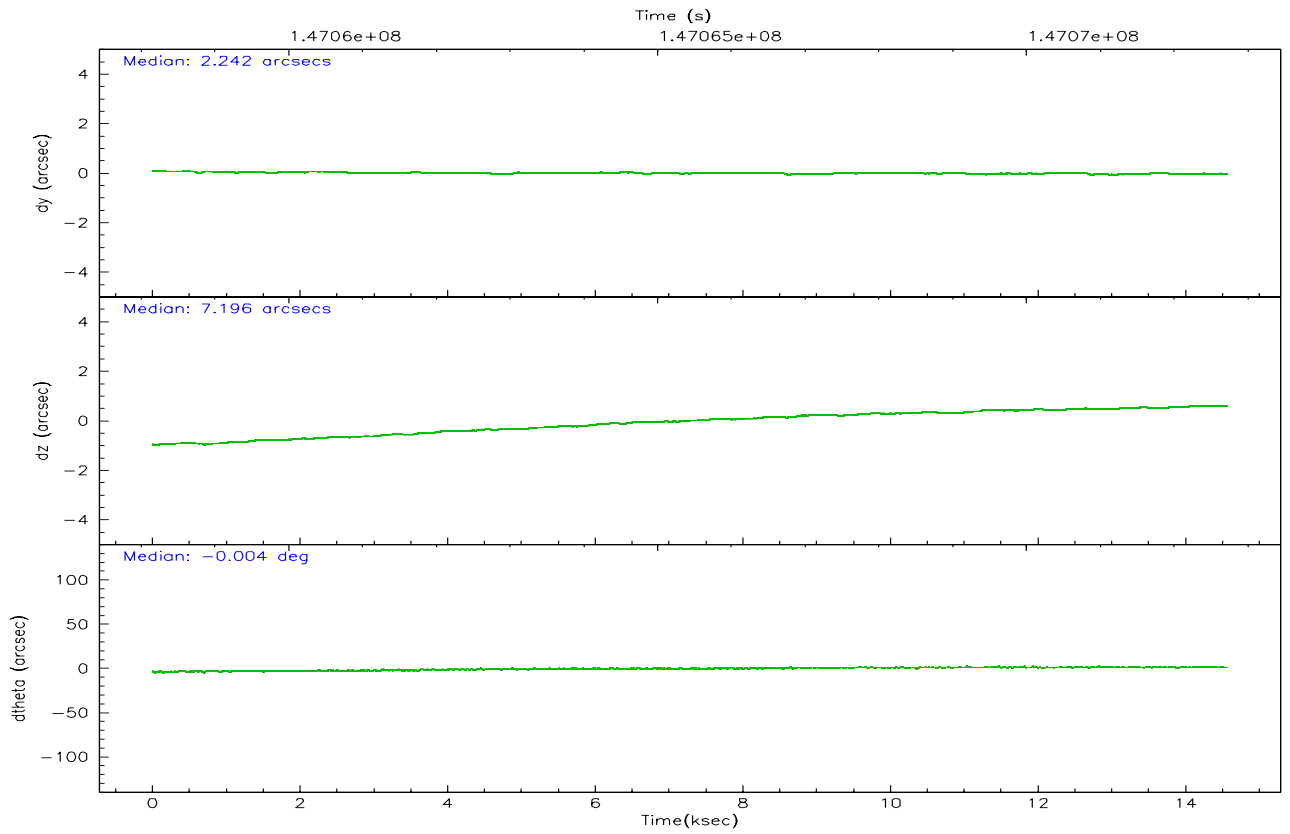
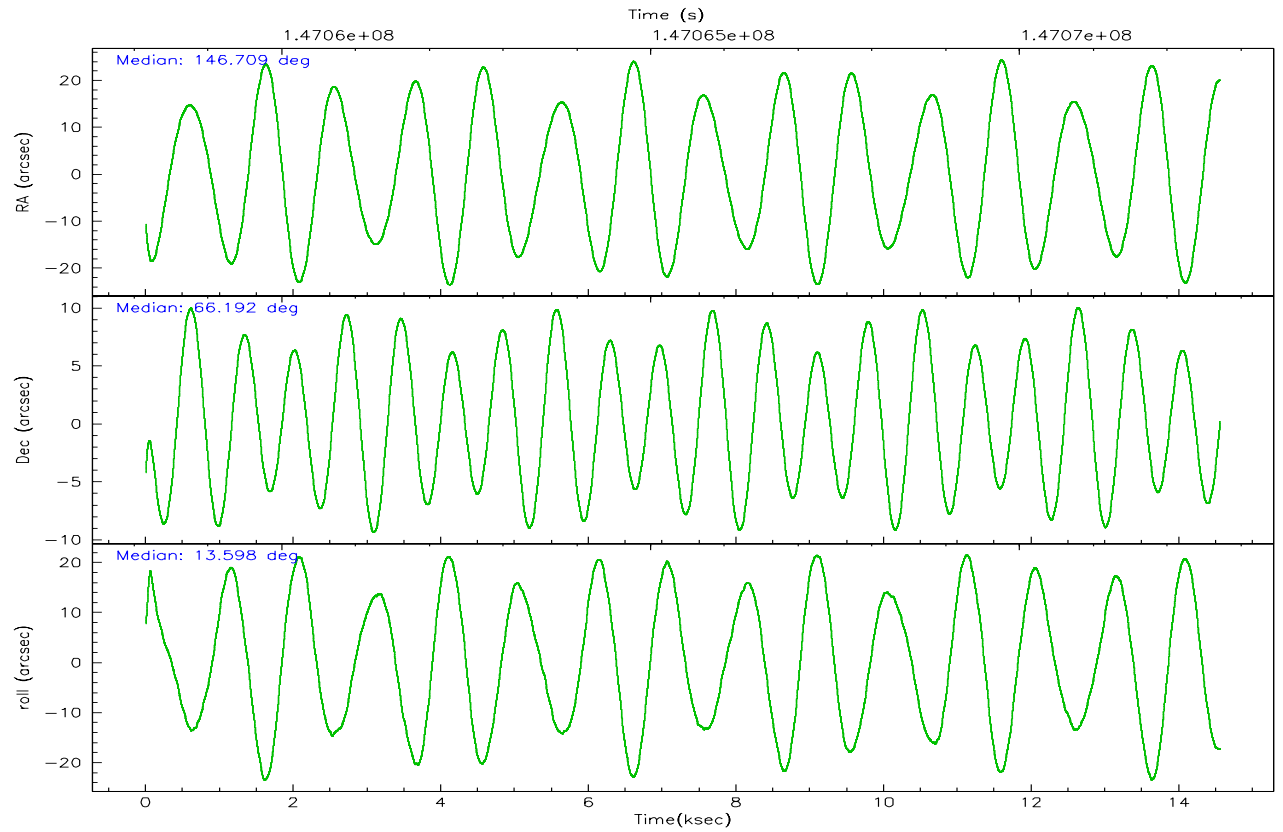
	ccd 2	ccd 3	ccd 5	ccd 6	ccd 7	ccd 8
grade 0 events	4838	4672	6875	4549	2939	7765
	5%	5%	4%	4%	2%	6%
grade 1 events	55	47	125	46	73	68
	0%	0%	0%	0%	0%	0%
grade 2 events	2138	1995	19317	2225	11766	5411
	2%	2%	13%	2%	9%	4%
grade 3 events	1054	1100	1421	1088	2619	2652
	1%	1%	1%	1%	2%	2%
grade 4 events	1088	1048	1319	1086	2468	2467
	1%	1%	0%	1%	1%	2%
grade 5 events	3606	3932	6807	4094	8197	5259
	3%	4%	4%	4%	6%	4%
grade 6 events	1876	1900	34117	2191	28411	6096
	1%	2%	24%	2%	22%	5%
grade 7 events	80076	75883	70034	79305	68633	86606
	84%	83%	50%	83%	54%	74%

2.2 Compared Parameters

Parameter	Planned	Actual	Parameter	Planned	Actual
Instrument	ACIS	ACIS	Obspar format version number	6	6
Detector	ACIS-235678	ACIS-235678	Obspar file type	PREDICTED	ACTUAL
Grating	NONE	NONE	Obspar update status	NONE	UPDATED
Data mode	FAINT	FAINT	Number of optional ACIS chips dropped	0	0
Observation mode	POINTING	POINTING	On-chip summing requested	N	N
Pointing RA	146.660316	146.7085094925102	Subarray requested	NONE	NONE
Pointing Dec	66.173204	66.19221406809697	Alternating exposures requested	N	N
Pointing Roll	13.494583	13.60712118265362	Primary exposure time	0.000000	3.2
SIM focus pos (mm)	-0.684267	-0.6828225247311905			
SIM defocus (mm)	0	0.001444936568705701			
SIM translation stage pos (mm)	-190.132523	-190.1400660498719			
SIM translation stage offset (mm)	0	0.00754346686406393			
Observation start time	147058325.184000	147056521.14738			
Observation start date	2002-08-30T01:31:01	2002-08-30T01:02:01			
Observation end time	147072725.184000	147073160.48556			
Observation end date	2002-08-30T05:31:01	2002-08-30T05:39:20			
Read mode	TIMED	TIMED			

2.3 Aspect



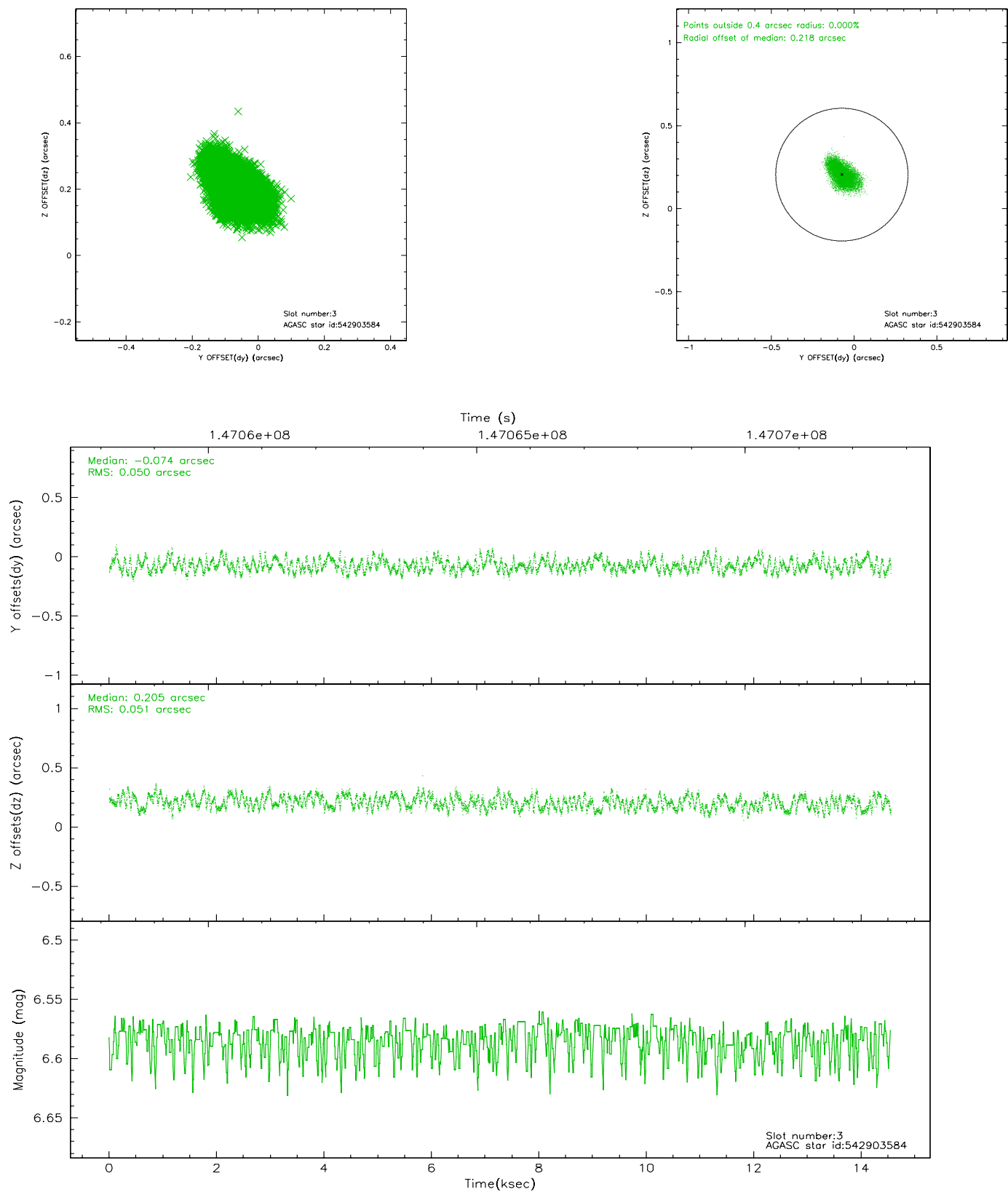


Slot Statistics

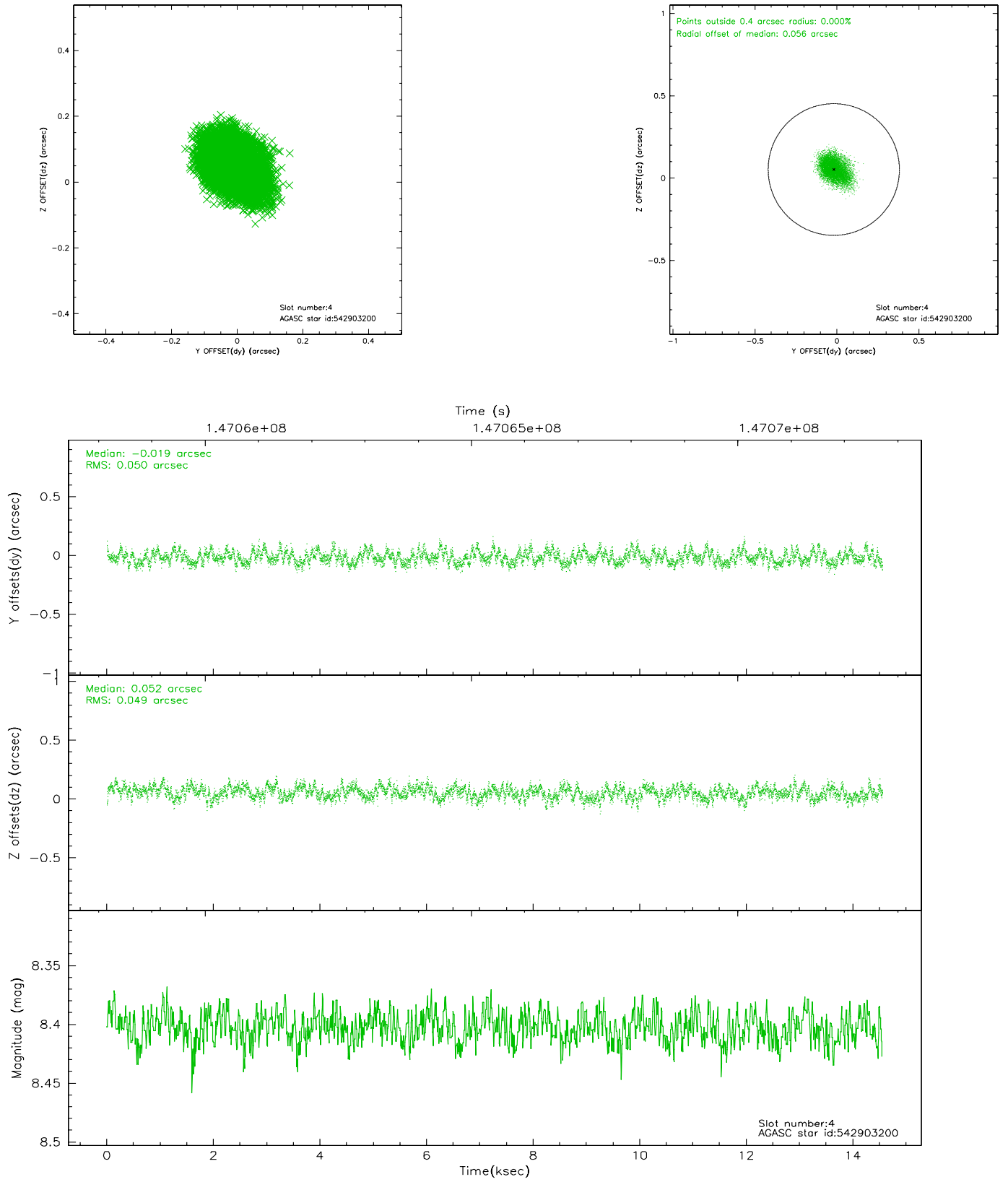
slot	status	id	mag	n_pts	med_dy	med_dz	dr1	dr2	ra	dec	mean_y	mean_z
0	FID	ACIS-S-2	7.11	3551	-0.017	0.018	0.016	0.024	0.000000	0.000000	-754.88	-1728.26
1	FID	ACIS-S-4	7.20	3551	-0.056	0.003	0.011	0.021	0.000000	0.000000	2158.21	179.87
2	FID	ACIS-S-5	7.24	3551	0.043	-0.013	0.020	0.028	0.000000	0.000000	-1807.25	173.89
3	GUIDE	542903584	6.58	7102	-0.074	0.205	0.076	0.120	147.598266	65.593223	872.18	-2345.08
4	GUIDE	542903200	8.40	7102	-0.019	0.052	0.074	0.119	147.196149	65.805328	460.92	-1468.84
5	GUIDE	542909424	8.73	7101	-0.056	-0.147	0.075	0.116	146.551805	66.702432	294.16	1888.85
6	GUIDE	542908856	8.67	7100	-0.048	-0.082	0.066	0.105	147.570649	66.819465	1799.35	1971.20
7	GUIDE	542908504	9.43	7098	0.192	-0.020	0.122	0.186	145.261172	66.148012	-1995.87	409.45

2.4 Star Slots

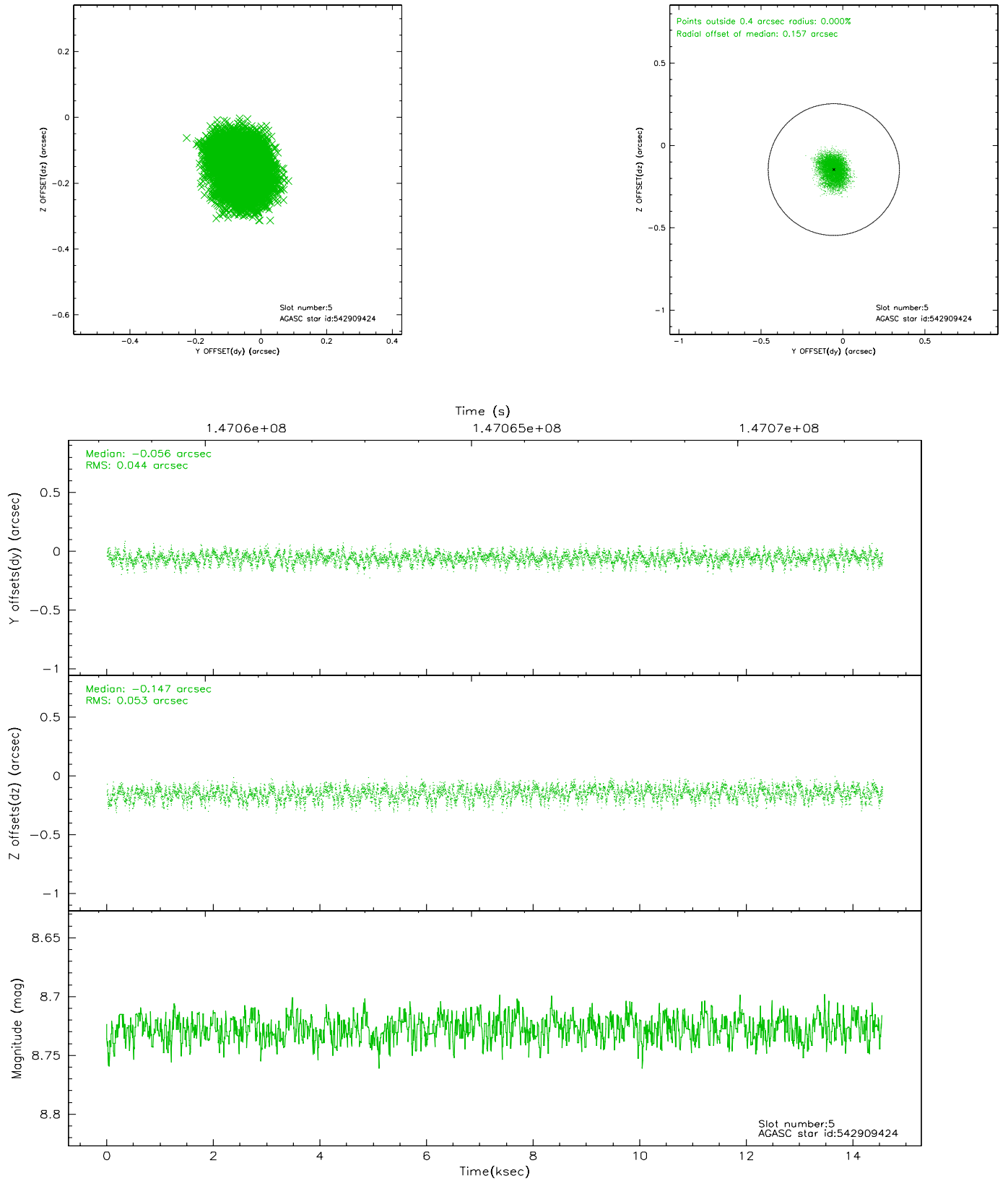
2.4.1 Slot 3



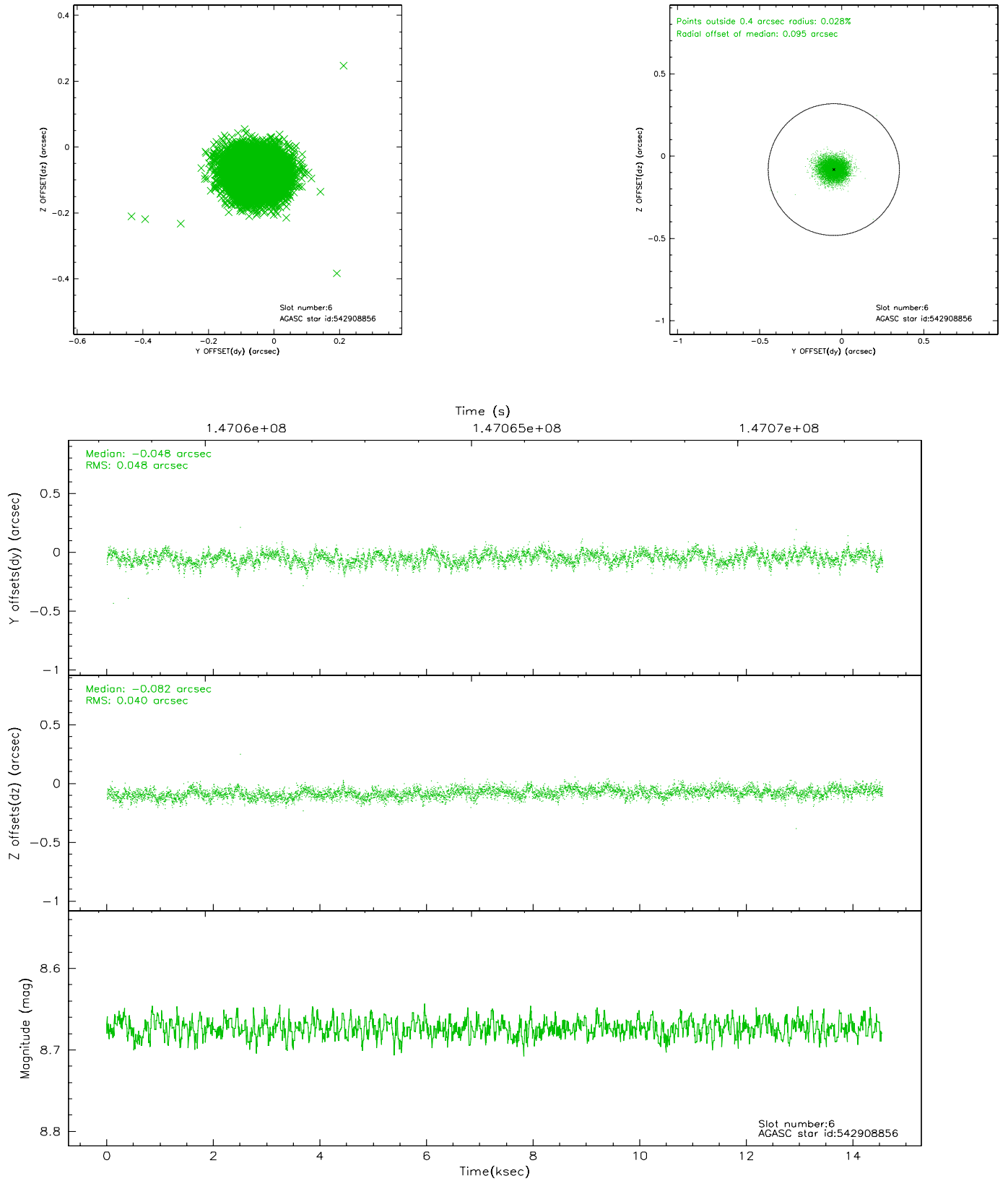
2.4.2 Slot 4



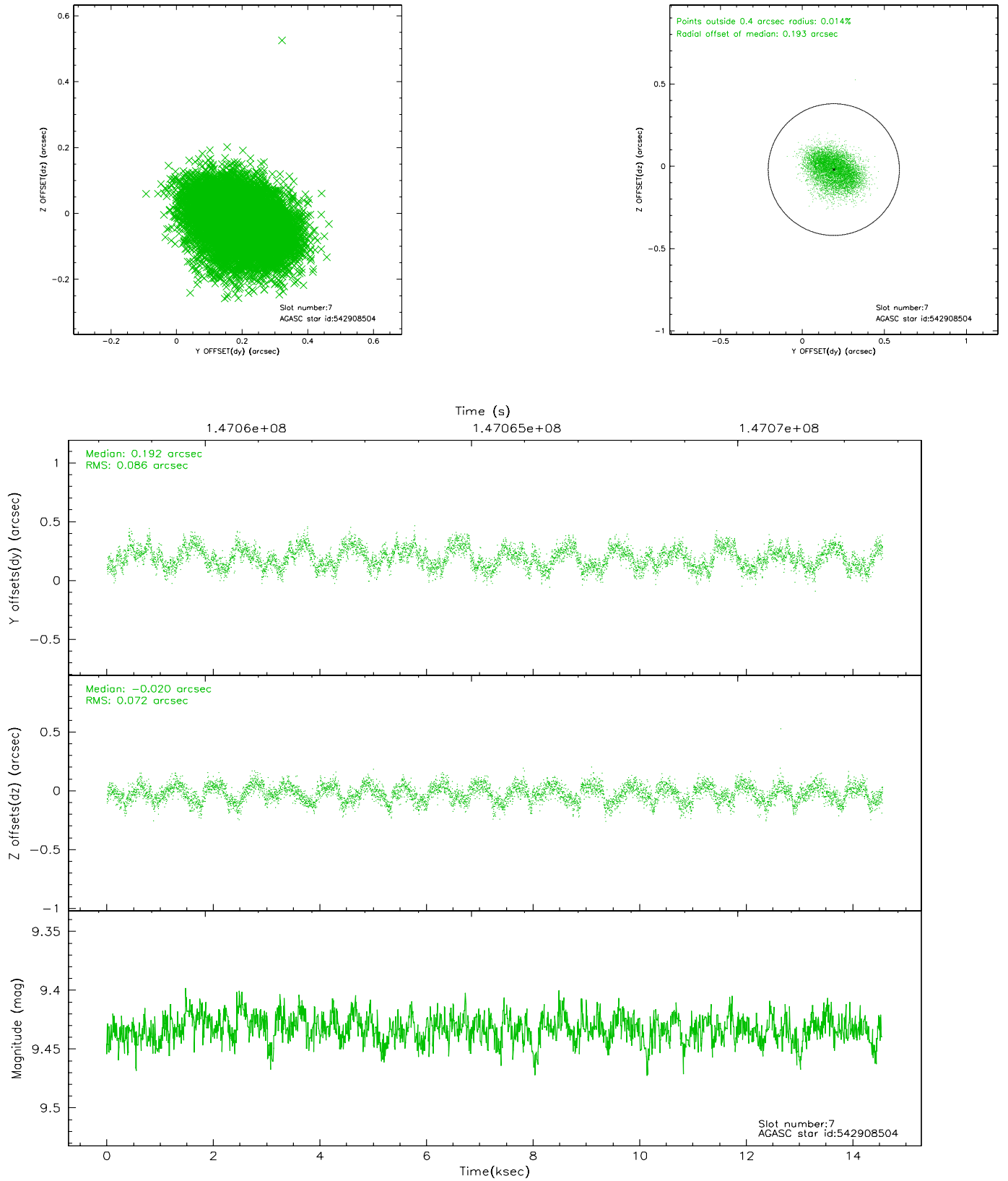
2.4.3 Slot 5



2.4.4 Slot 6

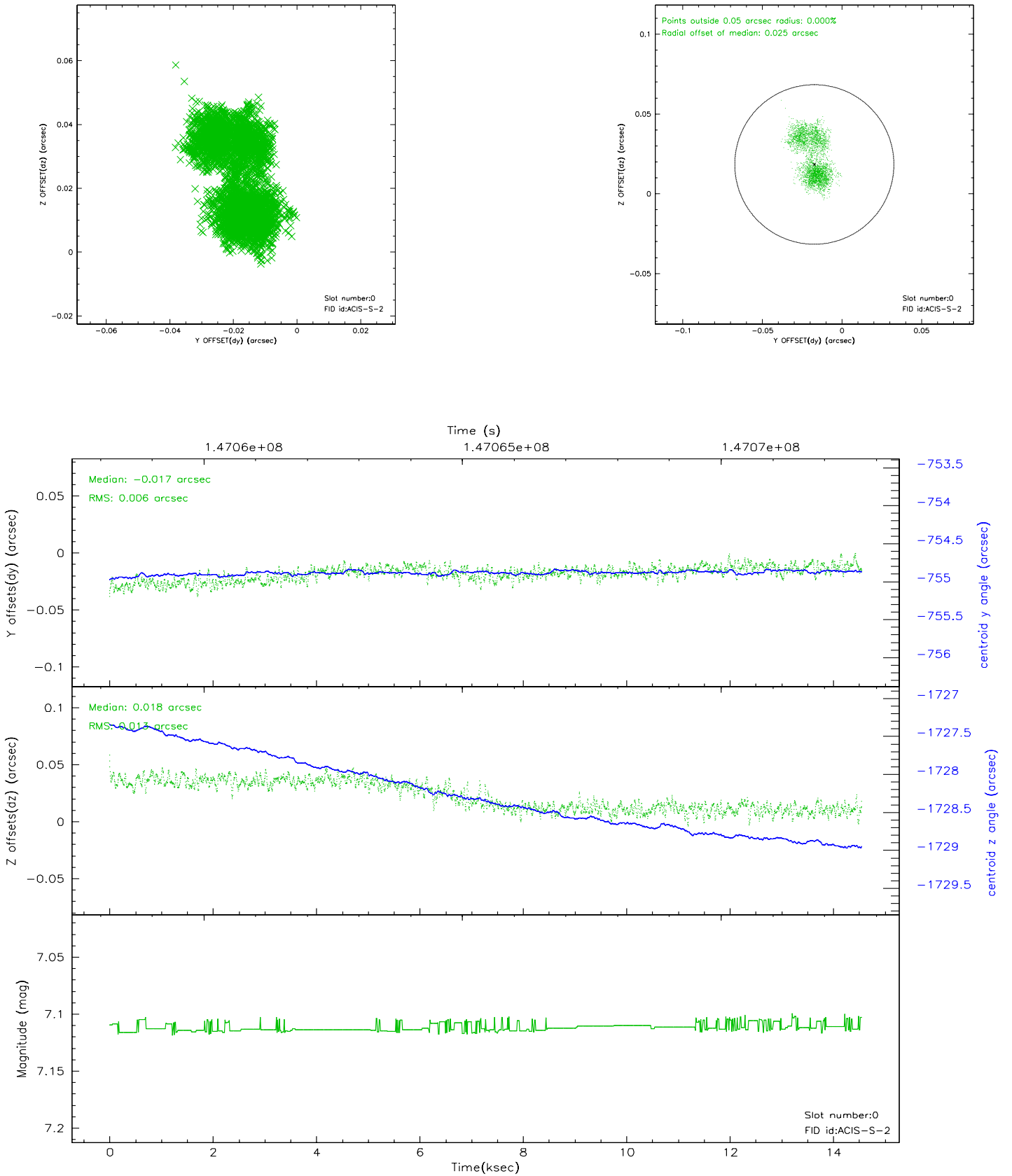


2.4.5 Slot 7

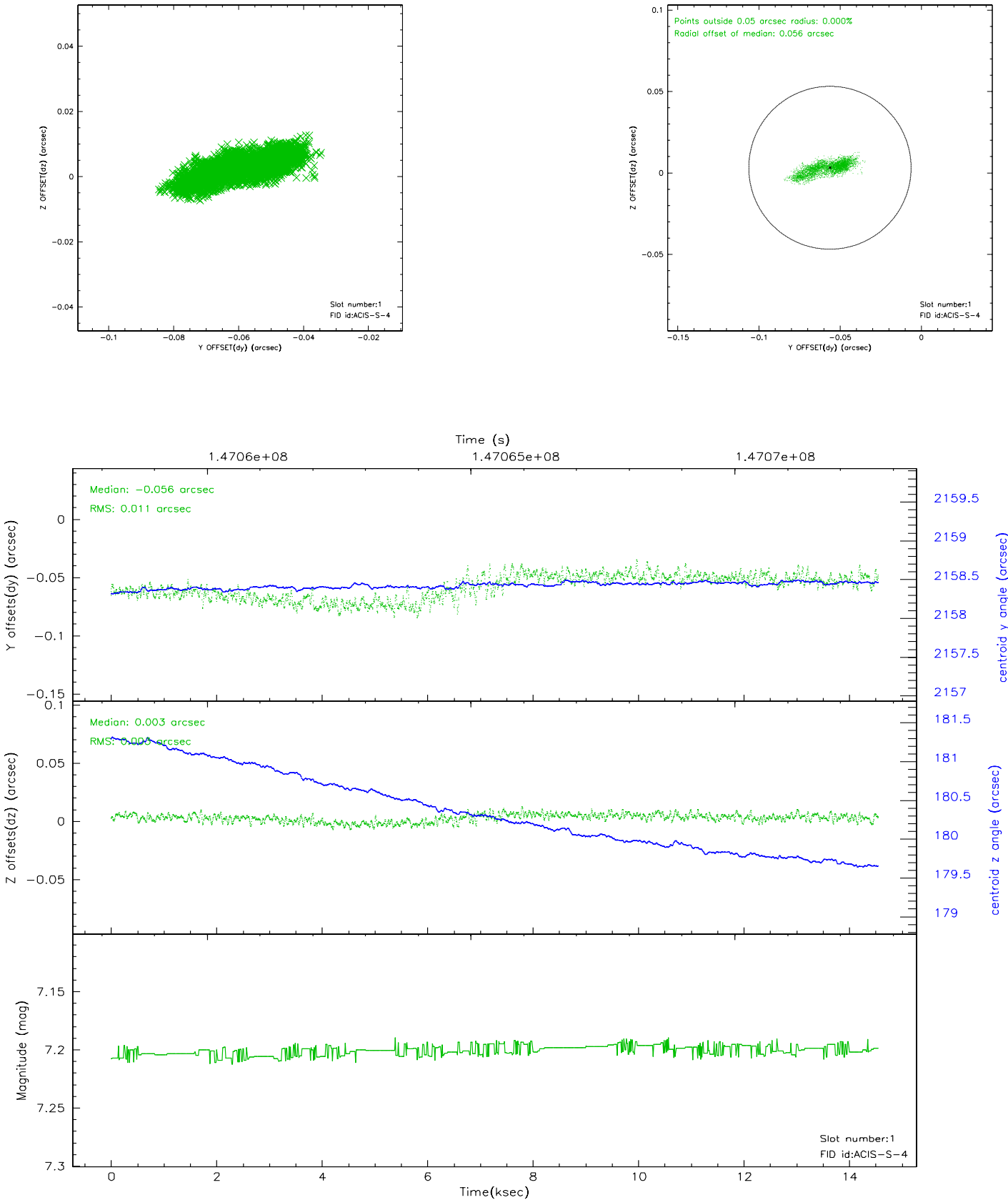


2.5 FID Slots

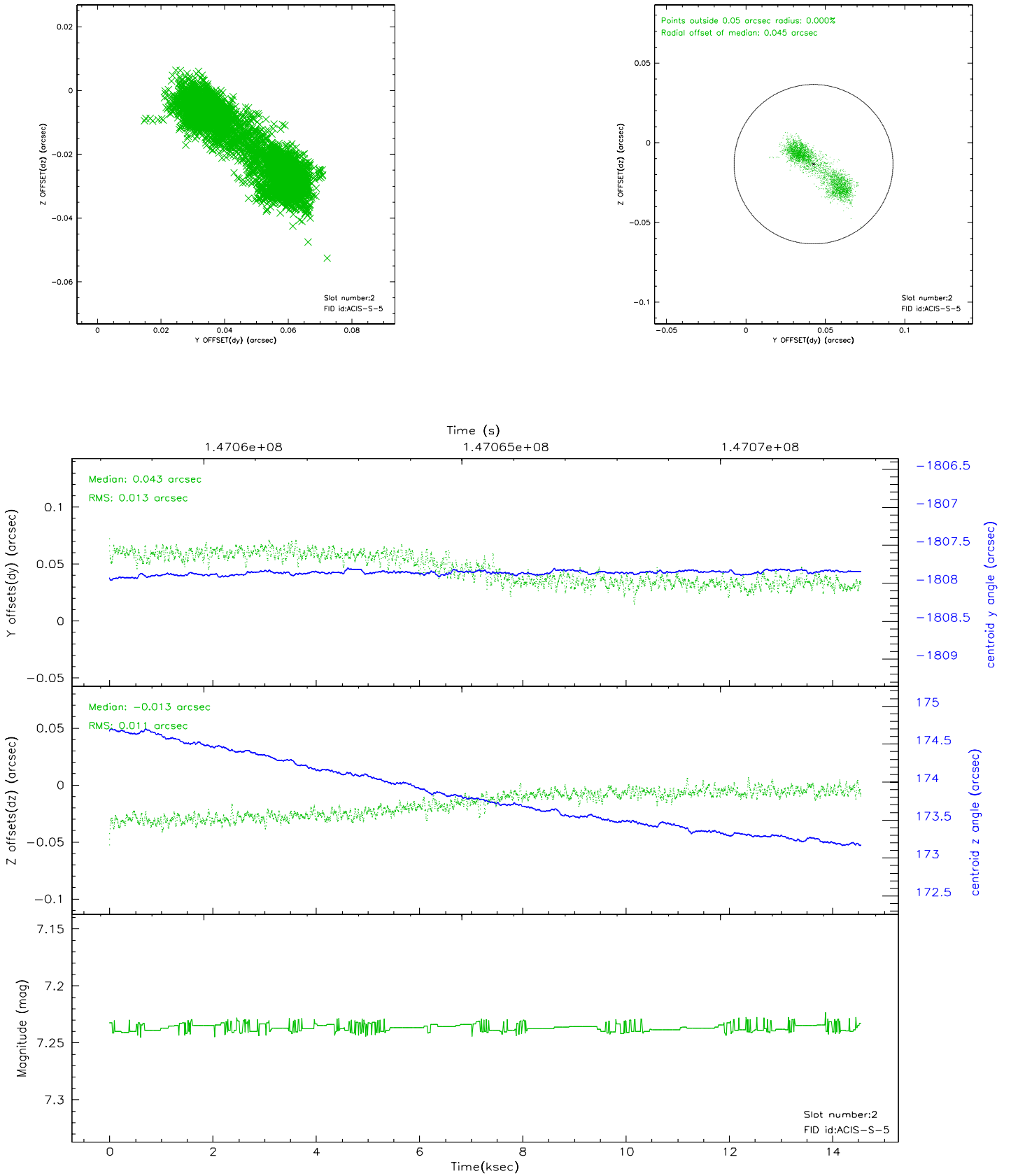
2.5.1 Slot 0



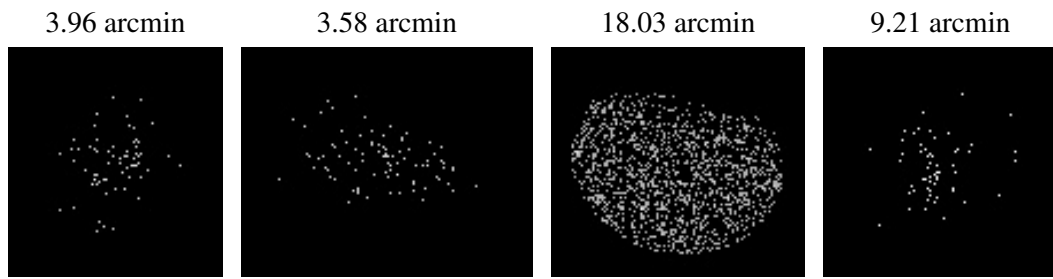
2.5.2 Slot 1



2.5.3 Slot 2



3 Point Sources



A Summary

A.1 Status

V&V Scientist	Jen Lauer
V&V Date (YYYY-MM-DD)	2006.10.03
V&V Edition	1
V&V Disposition and Status	OK
V&V Charge Time	14.55

A.2 Comments