

V&V Reference Report

L2 ASCDS Version : 7.6.10

Observation 2849 - L2 Version 001
Chandra X-Ray Center

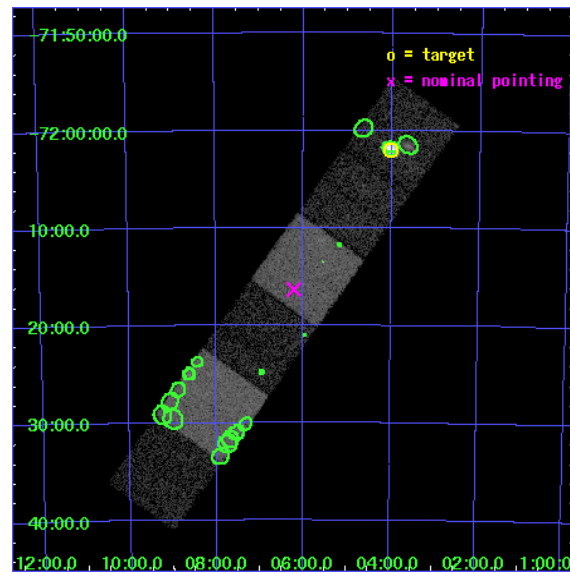
L2 Processing Date : Jan 17 2007

Contents

1	Front	2
2	OBI	3
2.1	OBI	3
2.1.1	Images	3
2.1.2	Bias	3
2.1.3	Parameters	4
2.1.4	Events	4
2.2	Compared Parameters	5
2.3	Aspect	6
2.4	Star Slots	9
2.4.1	Slot 3	9
2.4.2	Slot 4	10
2.4.3	Slot 5	11
2.4.4	Slot 6	12
2.4.5	Slot 7	13
2.5	FID Slots	14
2.5.1	Slot 0	14
2.5.2	Slot 1	15
2.5.3	Slot 2	16
3	Point Sources	17
A	Summary	18
A.1	Status	18
A.2	Comments	18

1 Front

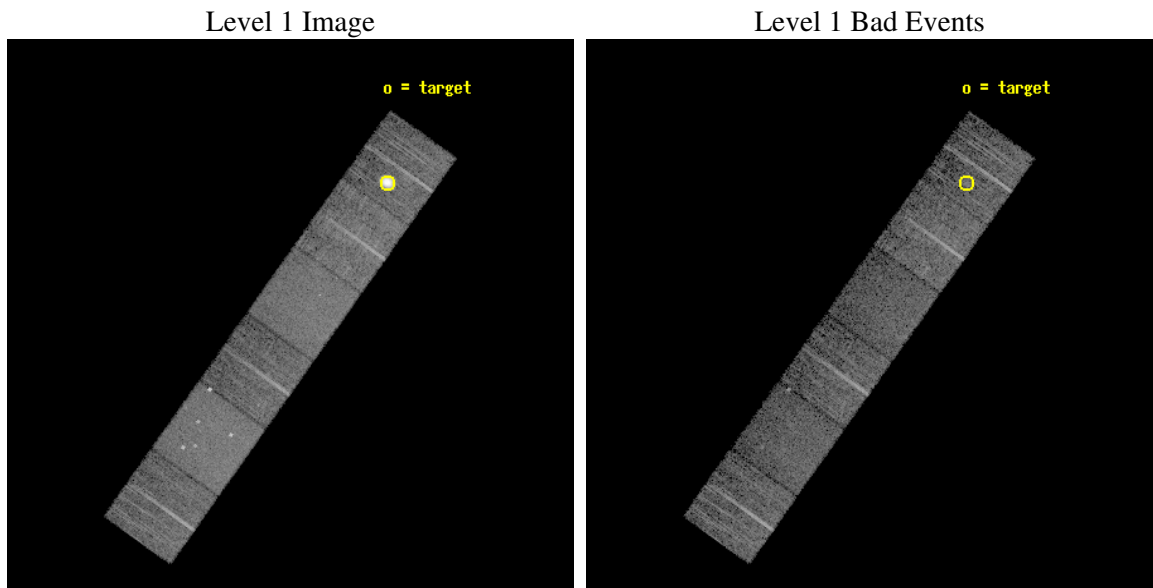
seq_num	590238
obs_id	2849
title	AO3A ACIS-S CALIBRATION OBSERVATIONS OF E0102-72
observer	Dr. CXC Calibration
object	E0102-72.3 [Chip S5, T=120, Offsets=-17,0,0]
dtcycle	0
cycle	P
ra_targ	16.01
dec_targ	-72.032028
ra_nom	16.553480625983
dec_nom	-72.272079115819
roll_nom	305.50363353749
revision	2
ontime	7302.4000068009
livetime	7209.9326209374
ontime4	7302.4000068009
ontime5	7302.4000068009
ontime6	7302.4000068009
ontime7	7302.4000068009
ontime8	7302.4000068009
ontime9	7302.4000068009
l2events	95821



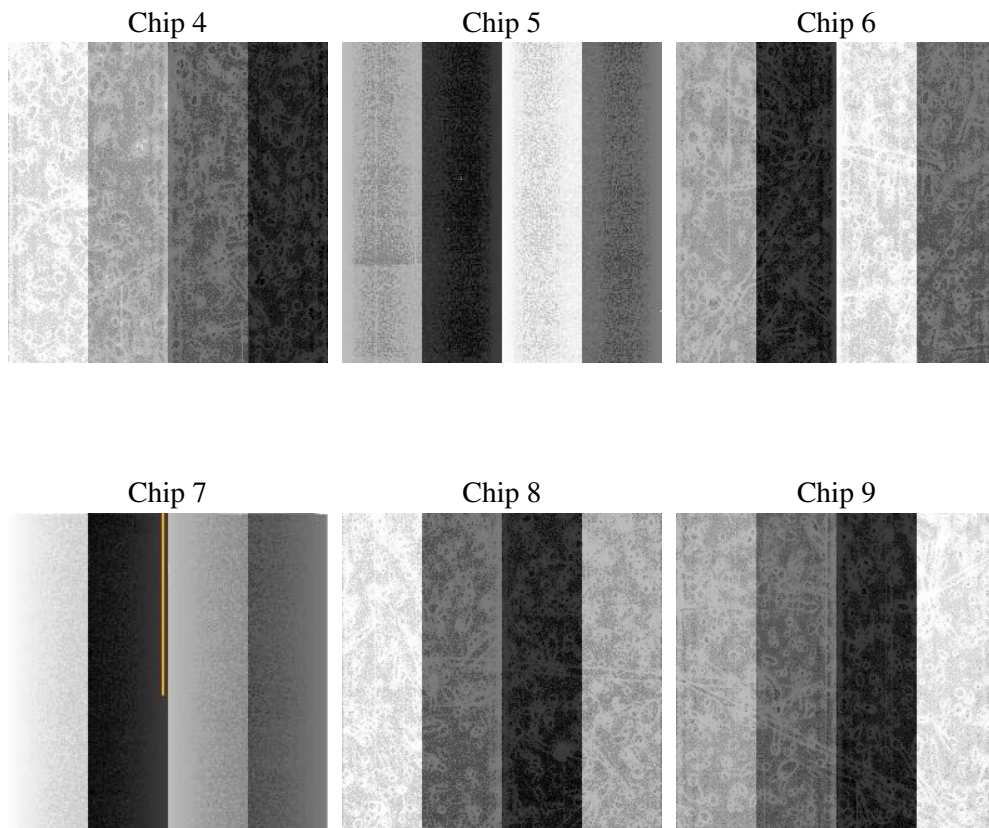
2 OBI

2.1 OBI

2.1.1 Images



2.1.2 Bias



2.1.3 Parameters

obi_num	1
ascdsver	7.6.10
caldsver	3.3.0
date	2007-01-18T02:59:24
revision	2

sched_exp_time	7543.286000
ontime	7302.4000068009
ontime4	7302.4000068009
ontime5	7302.4000068009
ontime6	7302.4000068009
ontime7	7302.4000068009
ontime8	7302.4000068009
ontime9	7302.4000068009
l1events	359778

2.1.4 Events

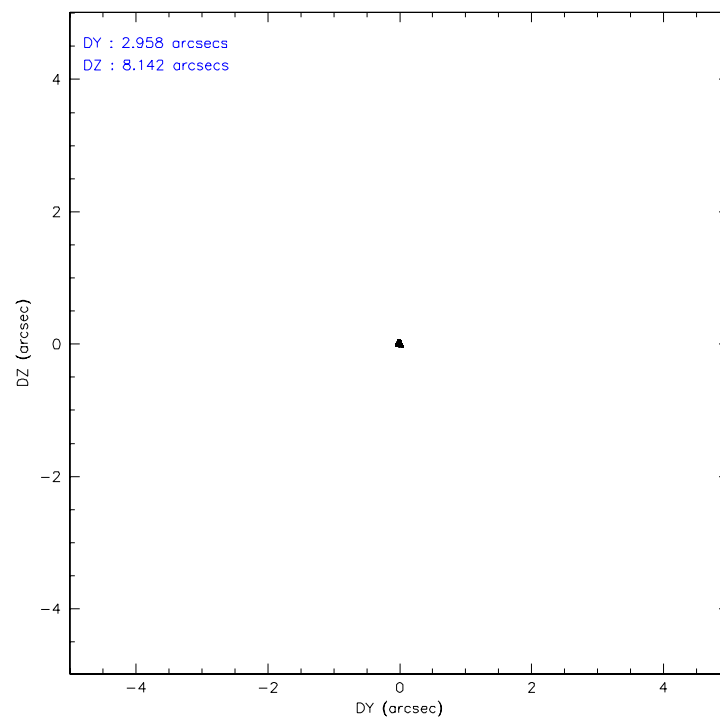
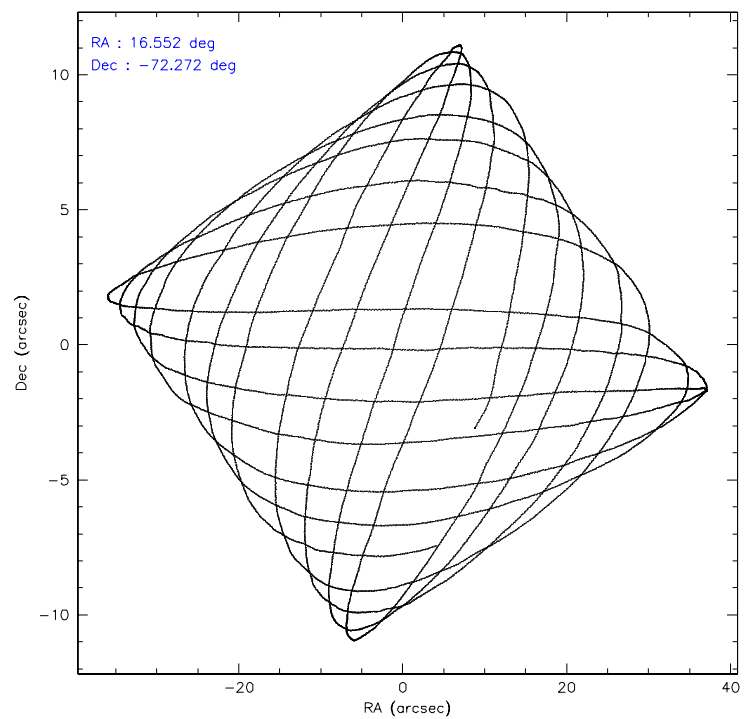
	ccd 4	ccd 5	ccd 6	ccd 7	ccd 8	ccd 9
level 1 events	51312	68601	46999	61456	62226	69184
rejected events	45557	36268	41232	35196	49890	41912
rejected %	88%	52%	87%	57%	80%	60%

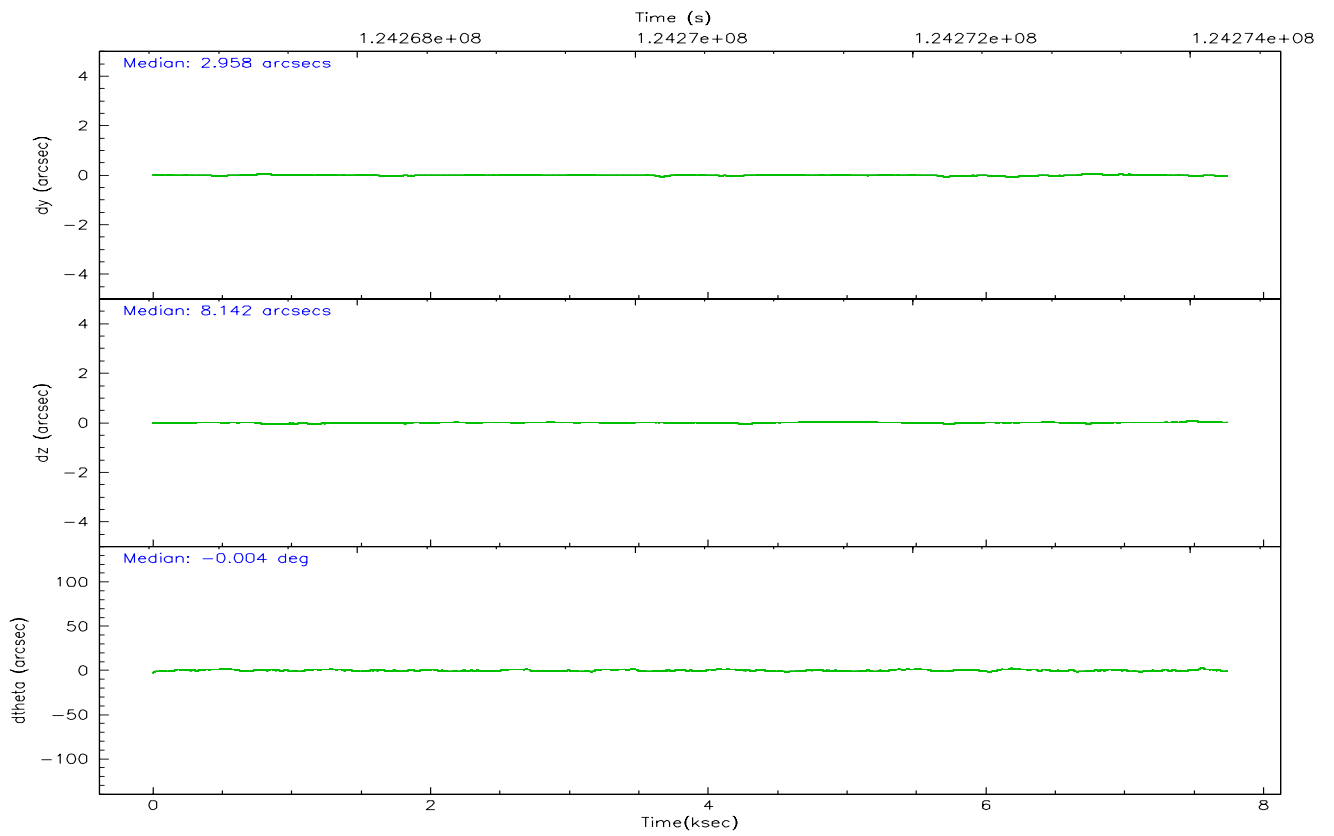
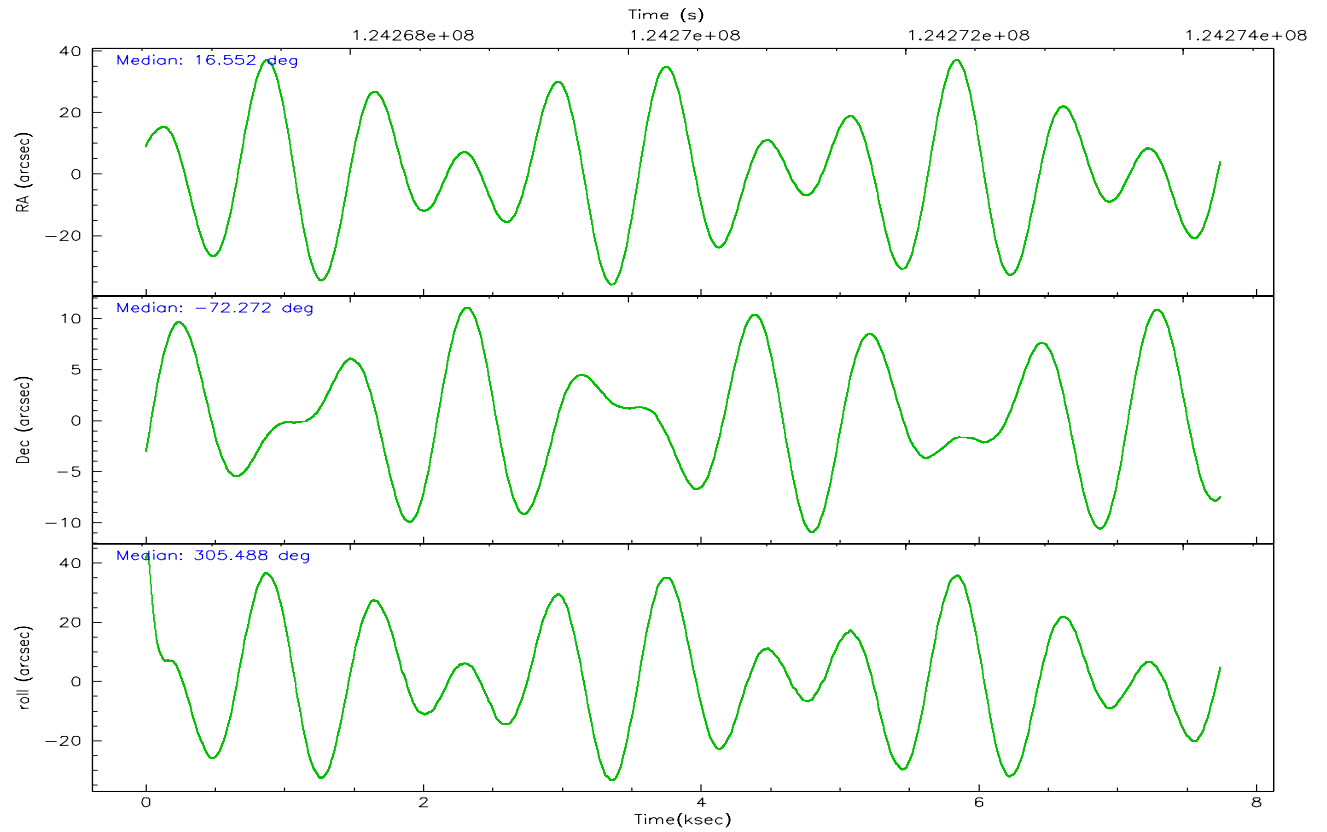
	ccd 4	ccd 5	ccd 6	ccd 7	ccd 8	ccd 9
grade 0 events	2350	4742	2463	2740	4186	21659
	4%	6%	5%	4%	6%	31%
grade 1 events	22	258	19	53	41	91
	0%	0%	0%	0%	0%	0%
grade 2 events	1433	8956	1093	5214	2621	2626
	2%	13%	2%	8%	4%	3%
grade 3 events	498	1261	546	2340	1215	850
	0%	1%	1%	3%	1%	1%
grade 4 events	496	1269	563	2283	1128	886
	0%	1%	1%	3%	1%	1%
grade 5 events	1670	4980	2021	5775	2378	1962
	3%	7%	4%	9%	3%	2%
grade 6 events	983	16120	1105	13695	3198	1274
	1%	23%	2%	22%	5%	1%
grade 7 events	43860	31015	39189	29356	47459	39836
	85%	45%	83%	47%	76%	57%

2.2 Compared Parameters

Parameter	Planned	Actual	Parameter	Planned	Actual
Instrument	ACIS	ACIS	Obspar format version number	6	6
Detector	ACIS-456789	ACIS-456789	Obspar file type	PREDICTED	ACTUAL
Grating	NONE	NONE	Obspar update status	NONE	UPDATED
Data mode	FAINT	FAINT	Number of optional ACIS chips dropped	0	0
Observation mode	POINTING	POINTING	On-chip summing requested	N	N
Pointing RA	16.471742	16.55348062598264	Subarray requested	NONE	NONE
Pointing Dec	-72.261112	-72.27207911581903	Alternating exposures requested	N	N
Pointing Roll	305.269161	305.5036335374942	Primary exposure time	0.000000	3.2
Window start time	123552064.184000	123552064.184000			
Window stop time	126144064.184000	126144064.184000			
SIM focus pos (mm)	-0.684267	-0.6828225247311905			
SIM defocus (mm)	0	0.001444936568705701			
SIM translation stage pos (mm)	-190.132523	-190.1425803651734			
SIM translation stage offset (mm)	0	0.01005778216563158			
Observation start time	124266724.184000	124266347.85812			
Observation start date	2001-12-09T06:31:00	2001-12-09T06:25:47			
Observation end time	124274267.184000	124274581.68345			
Observation end date	2001-12-09T08:36:43	2001-12-09T08:43:01			
Read mode	TIMED	TIMED			

2.3 Aspect



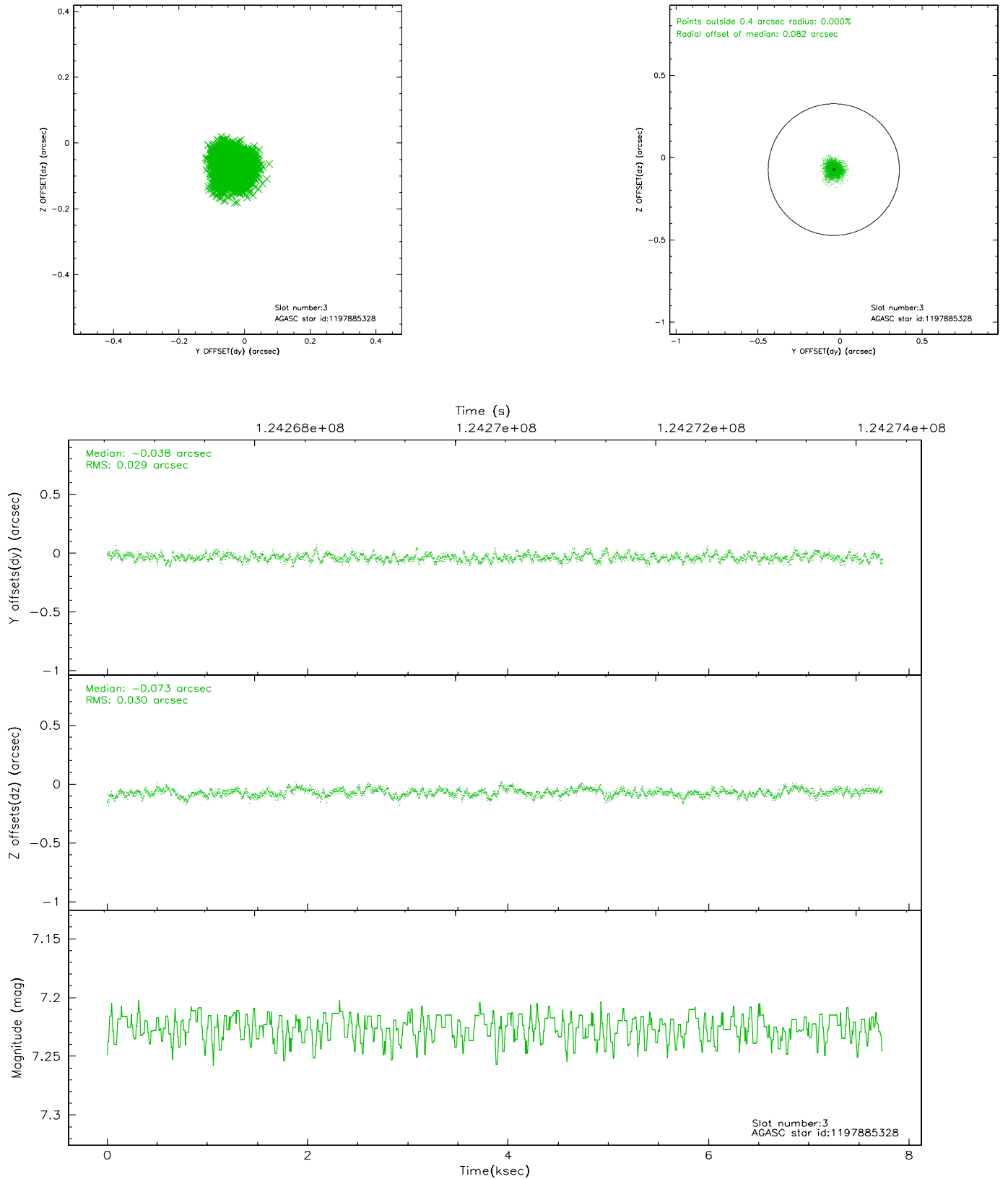


Slot Statistics

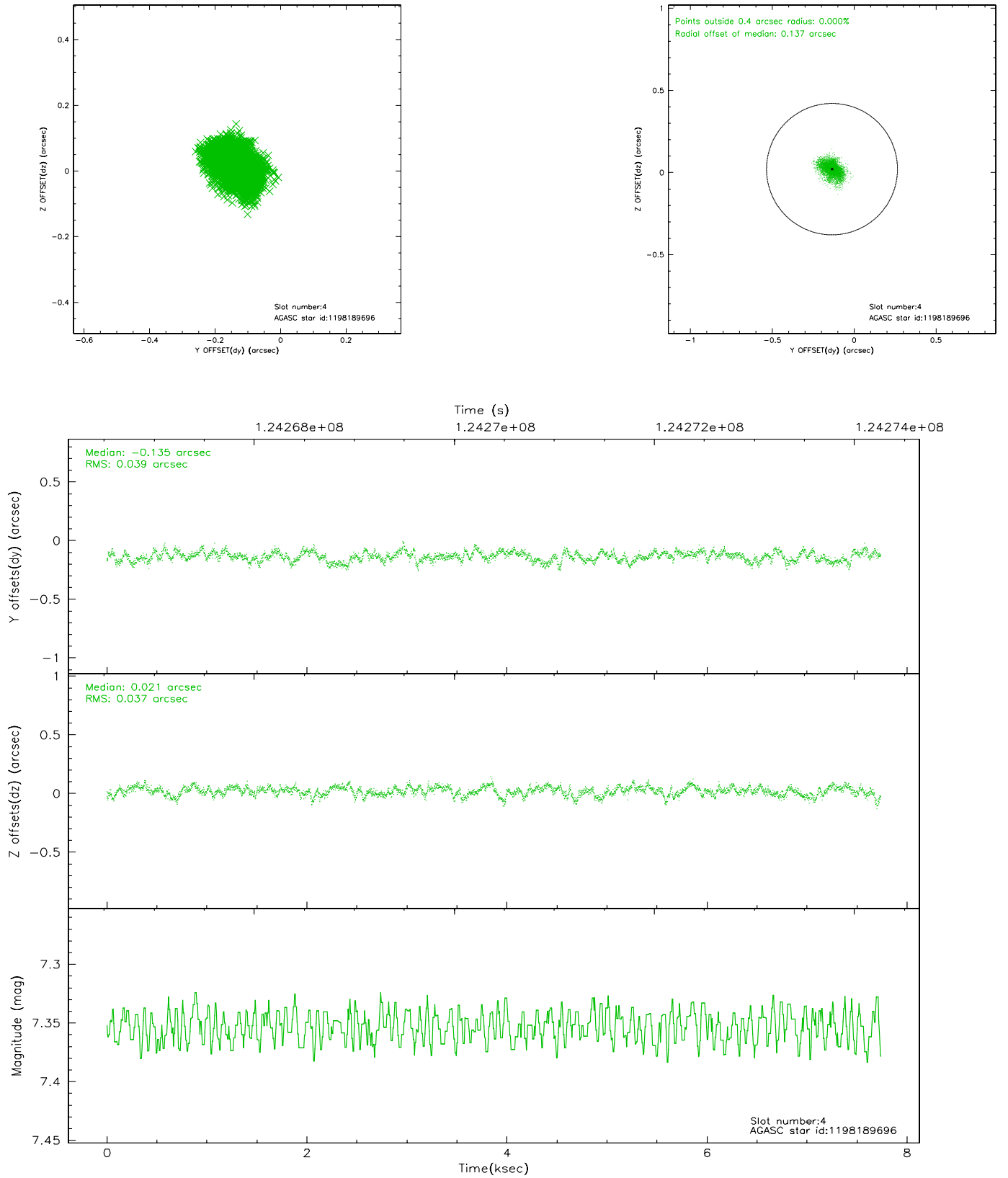
slot	status	id	mag	n_pts	med_dy	med_dz	dr1	dr2	ra	dec	mean_y	mean_z
0	FID	ACIS-S-2	7.11	1887	0.004	0.027	0.013	0.021	0.000000	0.000000	-755.60	-1729.26
1	FID	ACIS-S-4	7.20	1887	-0.082	-0.009	0.011	0.017	0.000000	0.000000	2157.27	178.42
2	FID	ACIS-S-5	7.23	1888	0.047	-0.009	0.018	0.029	0.000000	0.000000	-1807.45	172.94
3	GUIDE	1197885328	7.23	3775	-0.038	-0.073	0.044	0.071	16.283090	-71.733943	-1671.14	922.78
4	GUIDE	1198189696	7.35	3775	-0.135	0.021	0.058	0.094	15.223750	-72.697522	523.67	-2004.50
5	GUIDE	1197884536	8.50	3773	-0.024	0.042	0.068	0.112	17.160729	-71.835289	-800.56	1514.42
6	GUIDE	1197884712	8.31	3774	0.096	0.041	0.059	0.095	16.087398	-72.252690	-266.01	-326.06
7	GUIDE	1197749664	9.58	3763	0.102	-0.026	0.094	0.157	15.809015	-72.366369	-103.25	-810.11

2.4 Star Slots

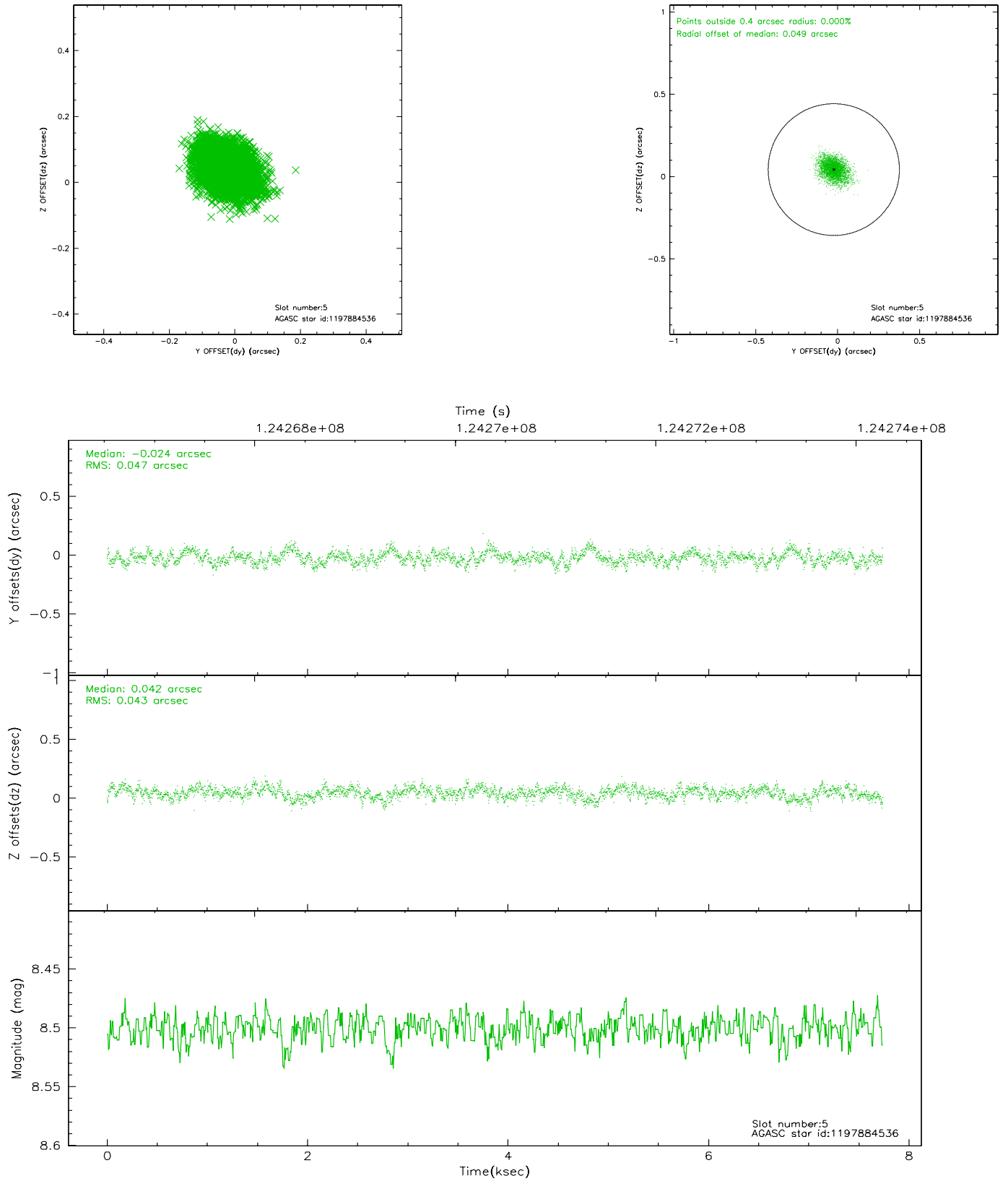
2.4.1 Slot 3



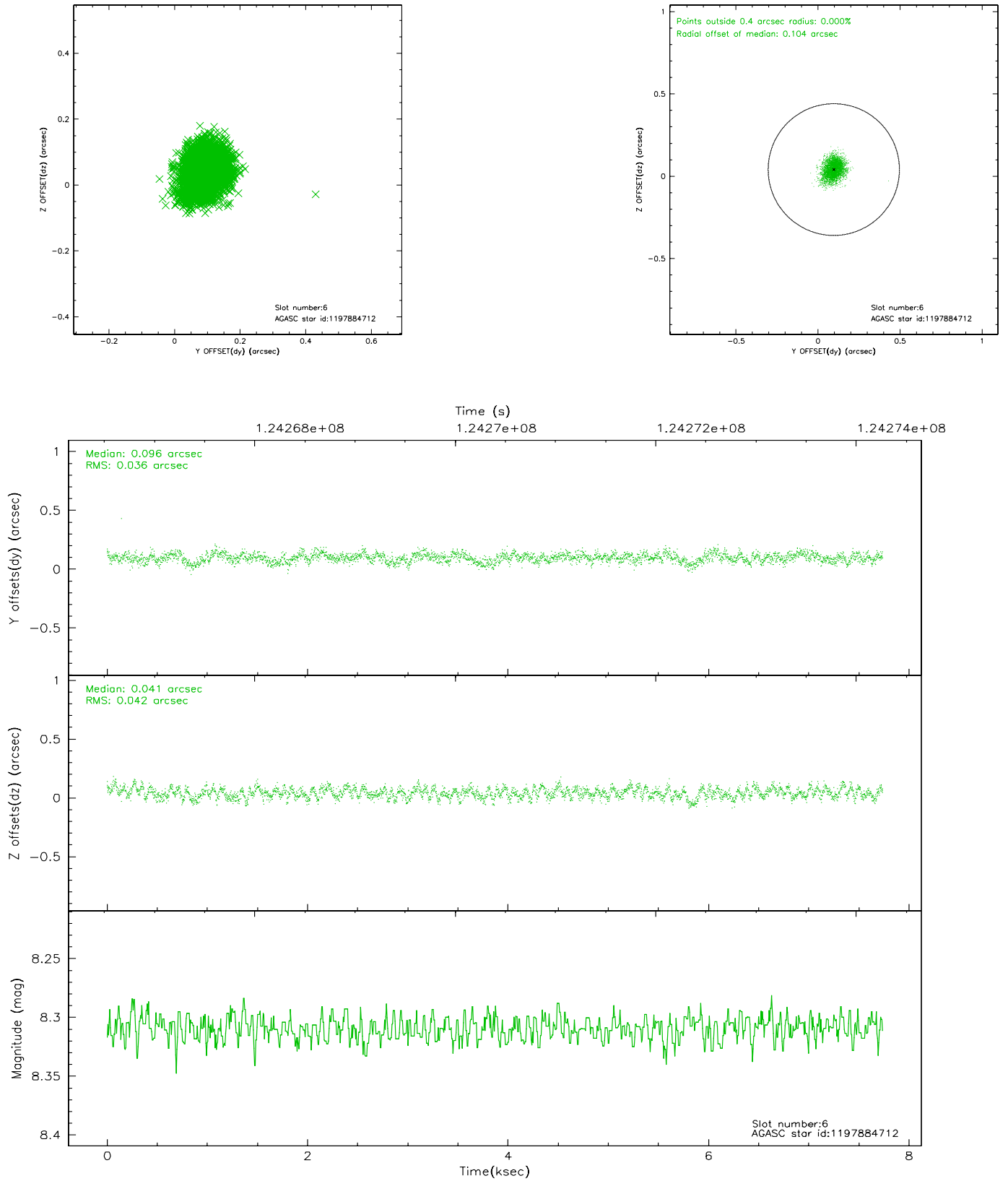
2.4.2 Slot 4



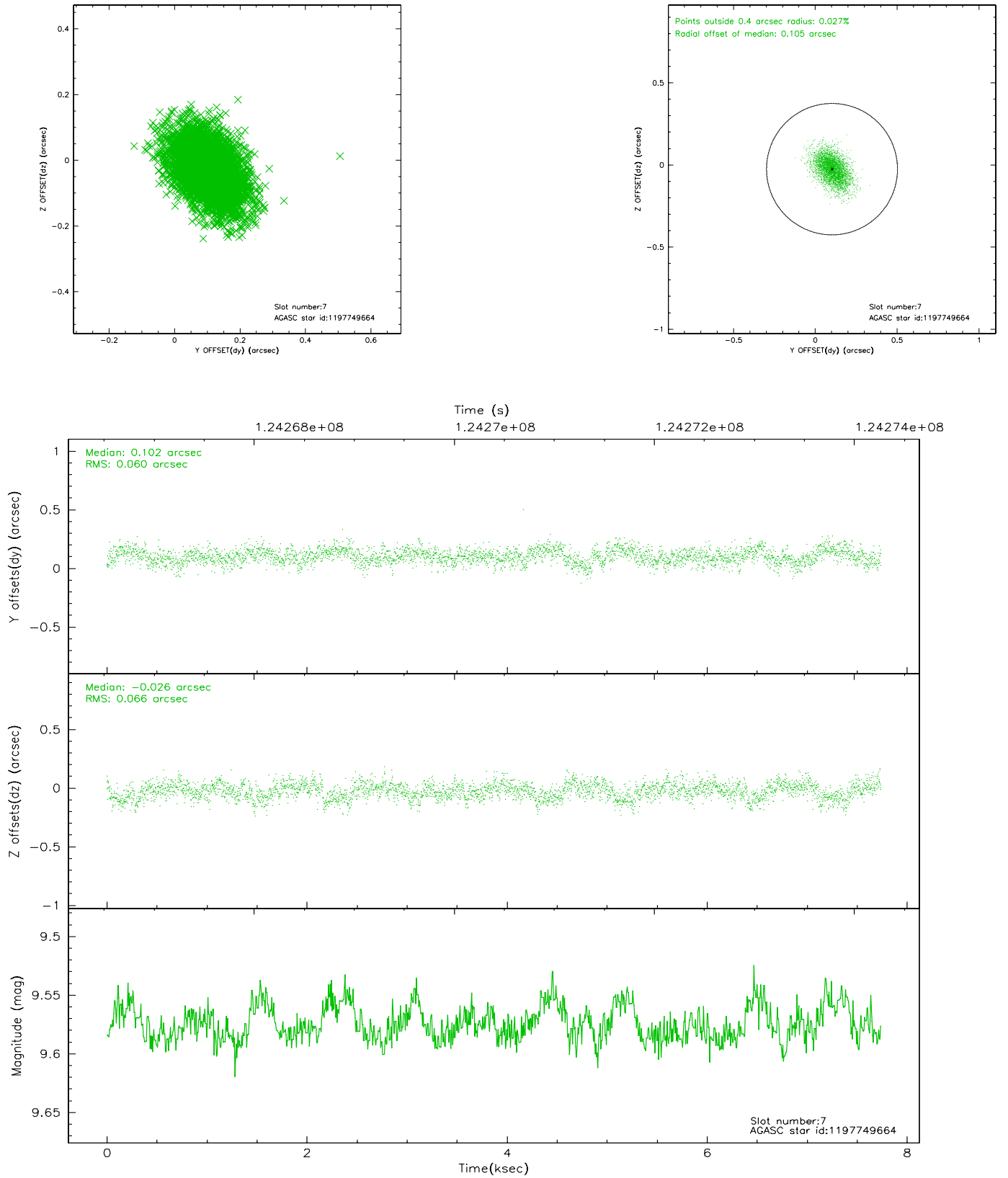
2.4.3 Slot 5



2.4.4 Slot 6

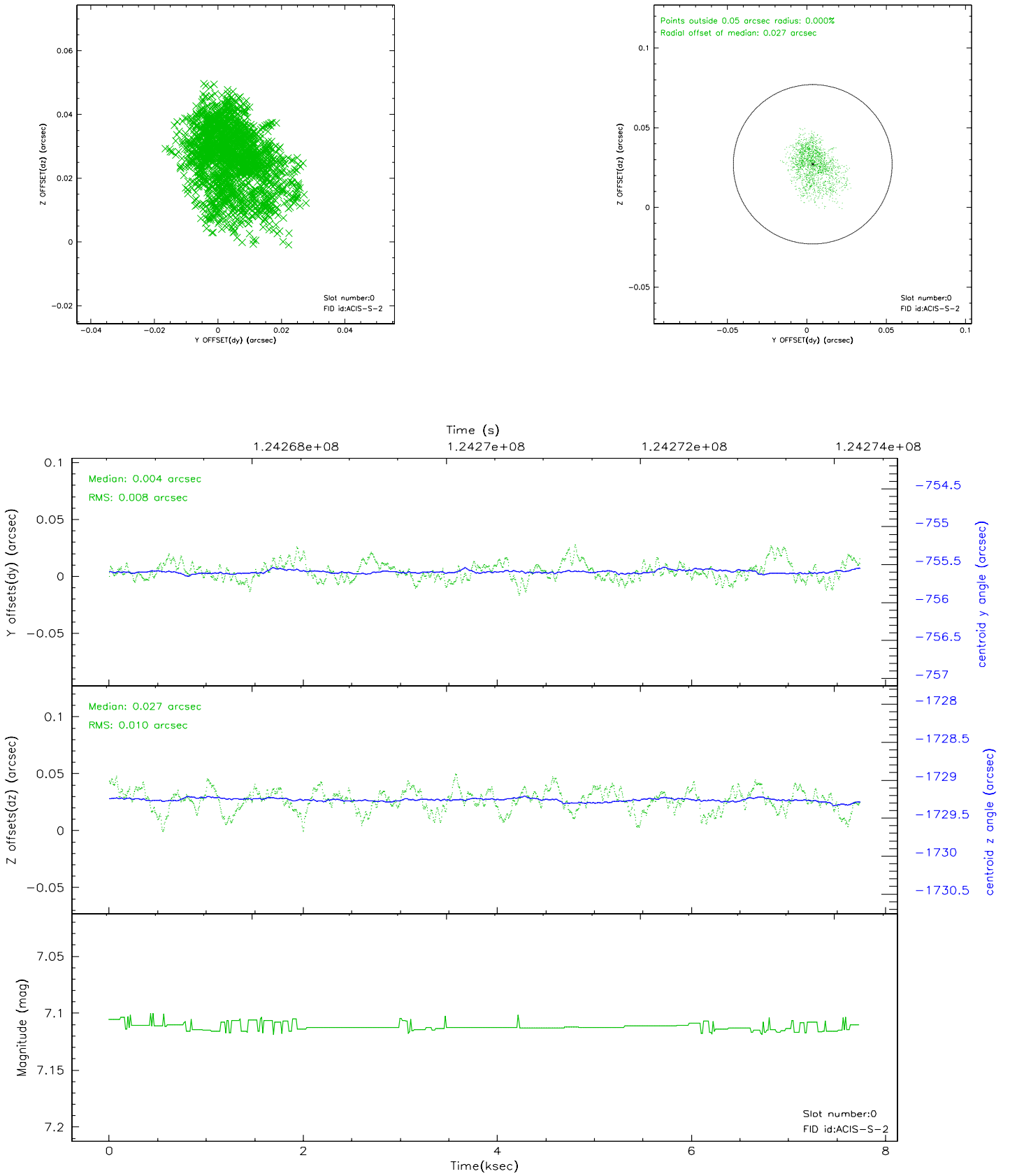


2.4.5 Slot 7

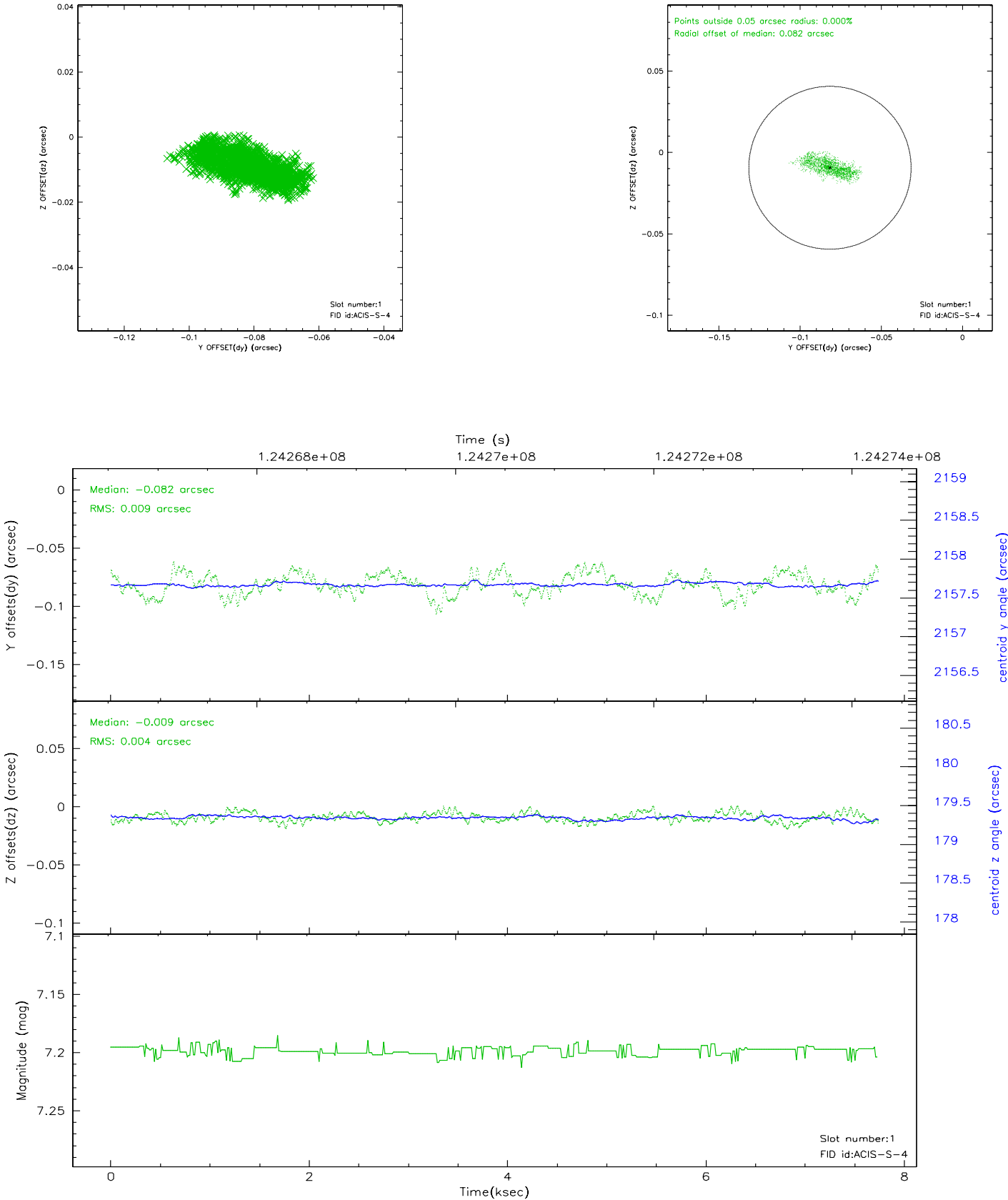


2.5 FID Slots

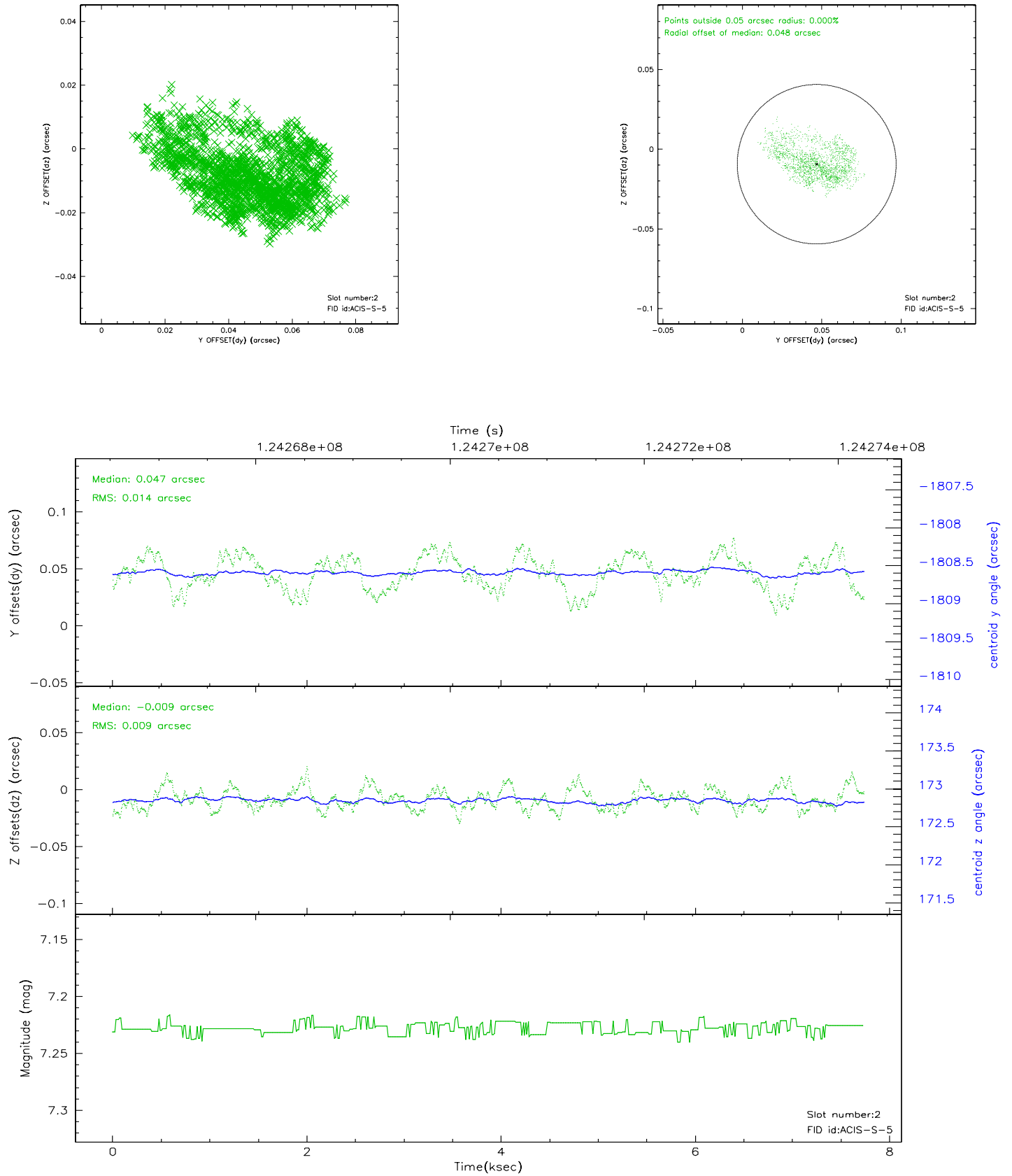
2.5.1 Slot 0



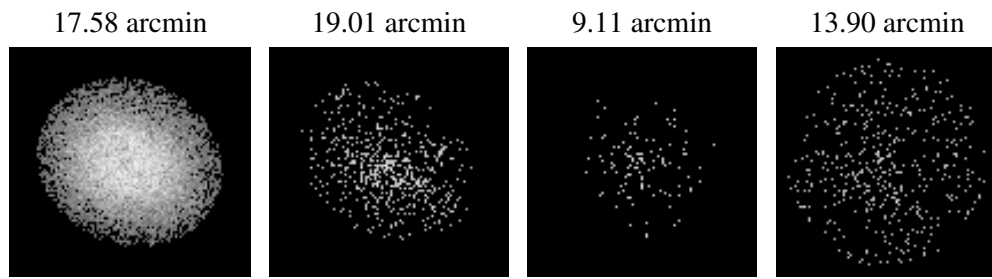
2.5.2 Slot 1



2.5.3 Slot 2



3 Point Sources



A Summary

A.1 Status

V&V Scientist	Jen Lauer
V&V Date (YYYY-MM-DD)	2007.01.18
V&V Edition	1
V&V Disposition and Status	OK
V&V Charge Time	7.305

A.2 Comments

Window constraint met. The target is far away from the aimpoint, and is therefore extended.