

V&V Reference Report

L2 ASCDS Version : 8.4.5

Observation 2839 - L2 Version 3
Chandra X-Ray Center

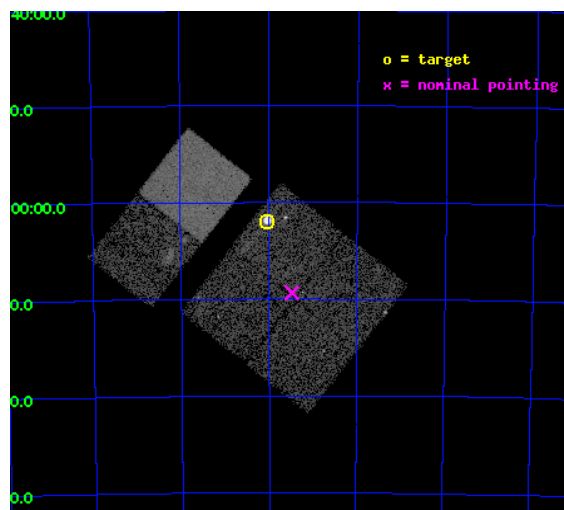
L2 Processing Date : Sep 28 2012

Contents

1	Front	2
2	OBI	3
2.1	OBI	3
2.1.1	Images	3
2.1.2	Bias	3
2.1.3	Parameters	4
2.1.4	Events	4
2.2	Compared Parameters	5
2.3	Aspect	6
2.4	Star Slots	9
2.4.1	Slot 3	9
2.4.2	Slot 4	10
2.4.3	Slot 5	11
2.4.4	Slot 6	12
2.4.5	Slot 7	13
2.5	FID Slots	14
2.5.1	Slot 0	14
2.5.2	Slot 1	15
2.5.3	Slot 2	16
A	Summary	17
A.1	Status	17
A.2	Comments	17

1 Front

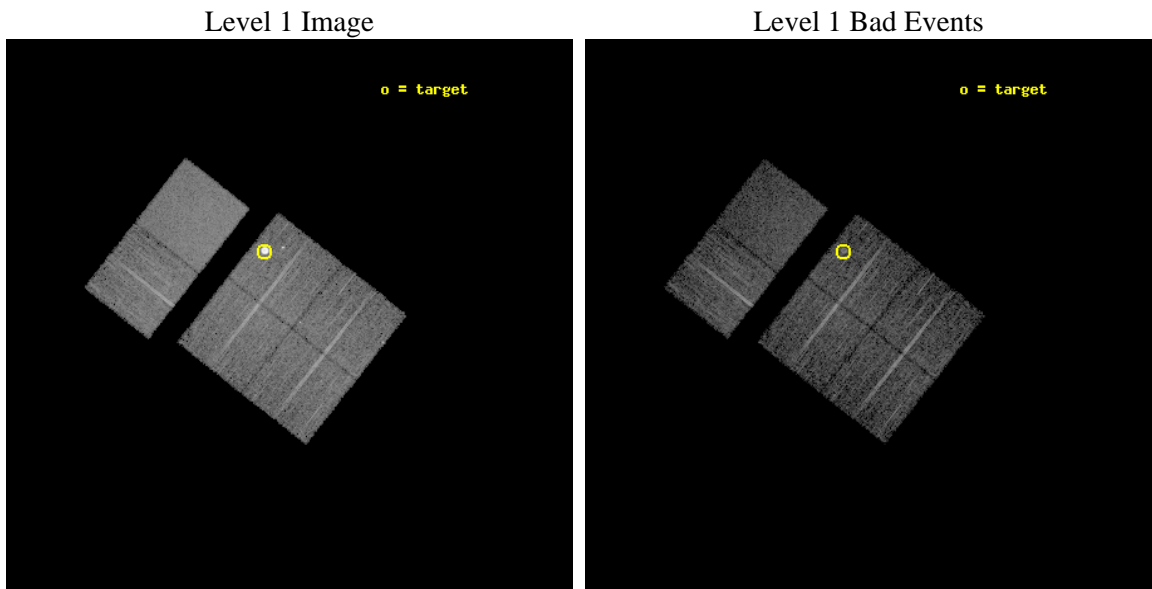
seq_num	590228	Sequence number
obs_id	2839	Observation id
title	AO3A ACIS-I CALIBRATION OBSERVATIONS OF E0102-72	Proposal title
observer	Dr. CXC Calibration	Principal investigator
object	E0102-72.3 [Chip I3, T=120, Offsets=-4,6,0]	Source name
dtcycle	0	
cycle	P	events from which exps? Prim/Second/Both
ra_targ	16.01	Observer's specified target RA [deg]
dec_targ	-72.032028	Observer's specified target Dec [deg]
ra_nom	15.870467260286	Nominal RA [deg]
dec_nom	-72.1558149483	Nominal Dec [deg]
roll_nom	308.21273733707	Nominal Roll [deg]
revision	3	Processing version of data
ontime	7558.4000070244	Sum of GTIs [s]
livetime	7462.6909950134	Livetime [s]
ontime0	7558.4000070244	Sum of GTIs [s]
ontime1	7558.4000070244	Sum of GTIs [s]
ontime2	7558.4000070244	Sum of GTIs [s]
ontime3	7558.4000070244	Sum of GTIs [s]
ontime6	7558.4000070244	Sum of GTIs [s]
ontime7	7558.4000070244	Sum of GTIs [s]
l2events	74308	Number of level 2 events



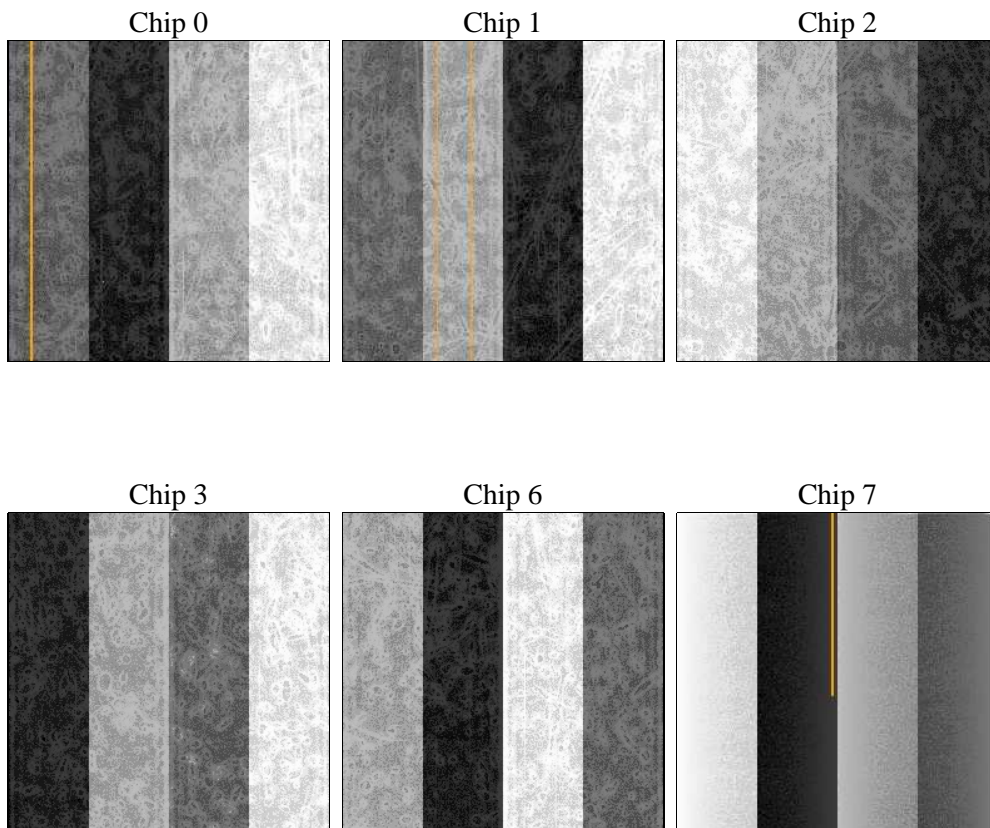
2 OBI

2.1 OBI

2.1.1 Images



2.1.2 Bias



2.1.3 Parameters

obi_num	1	Obi number	sched_exp_time	7800.000000	[s] Scheduled observation exposure time
ascdsver	8.4.5	Processing system revision	ontime	7558.4000070244	Sum of GTIs [s]
caldsver	4.5.2	 	ontime0	7558.4000070244	Sum of GTIs [s]
date	2012-09-28T06:35:04	Date and time of file creation	ontime1	7558.4000070244	Sum of GTIs [s]
revision	3	Processing version of data	ontime2	7558.4000070244	Sum of GTIs [s]
			ontime3	7558.4000070244	Sum of GTIs [s]
			ontime6	7558.4000070244	Sum of GTIs [s]
			ontime7	7558.4000070244	Sum of GTIs [s]
			l1events	323269	Number of level 1 events

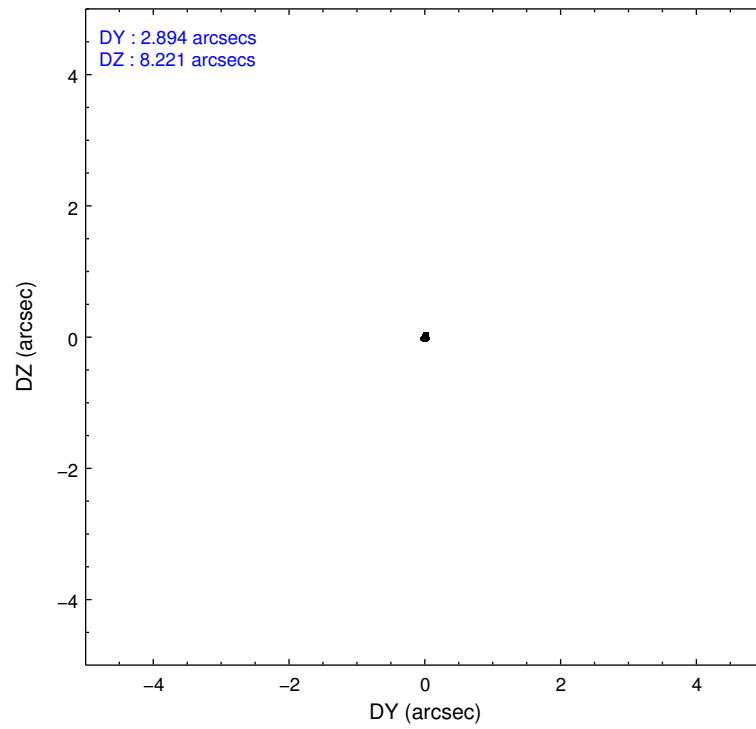
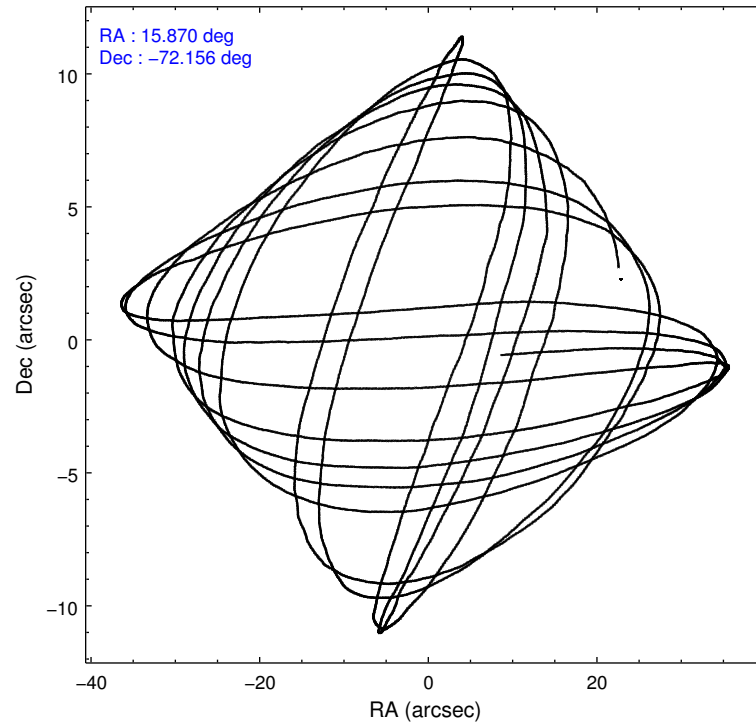
2.1.4 Events

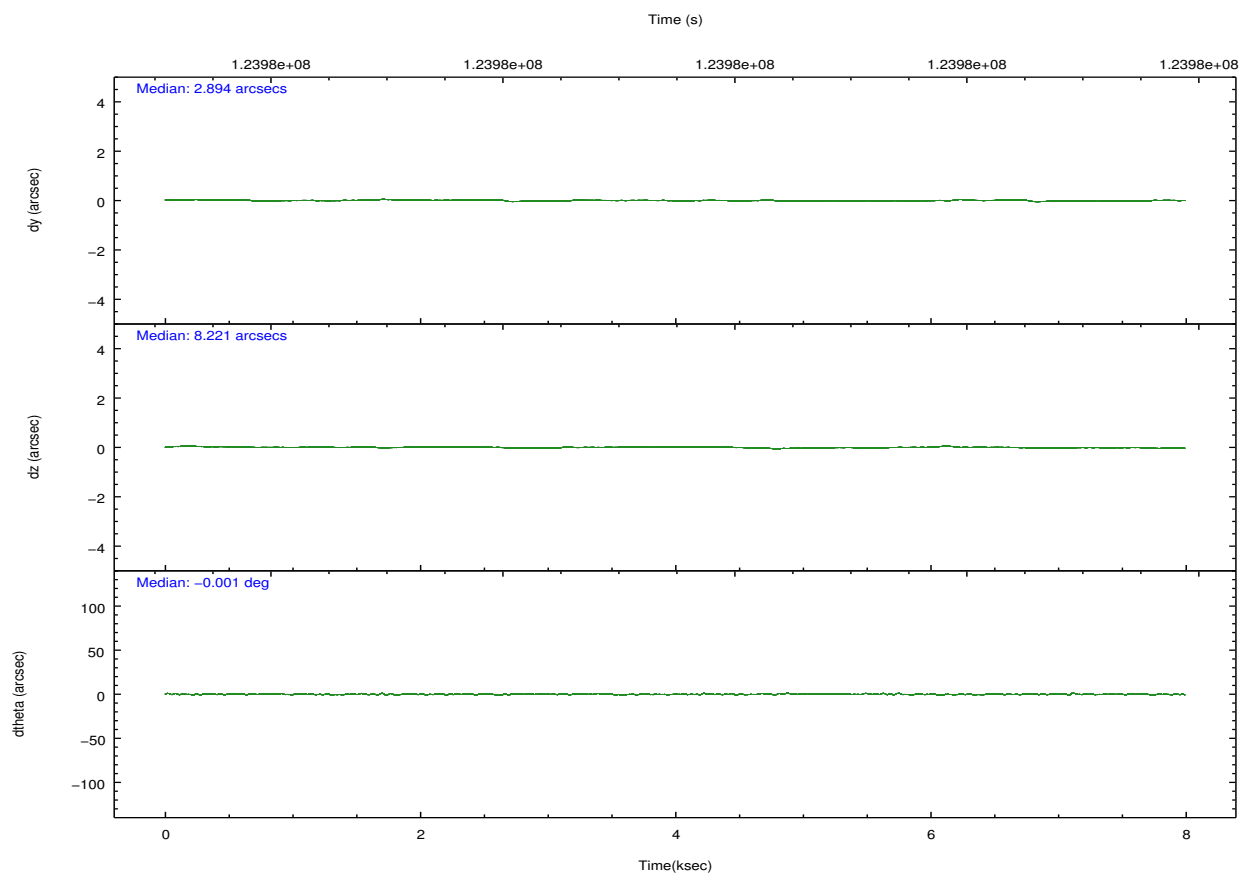
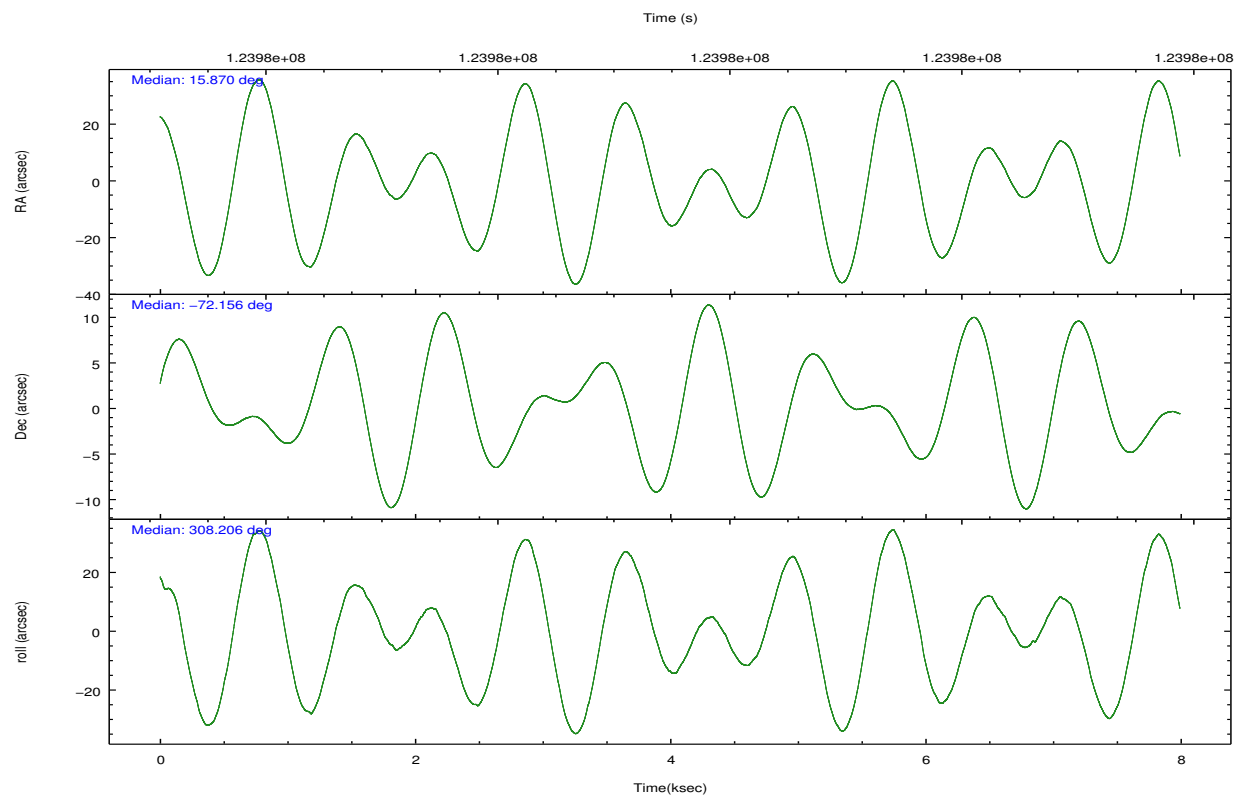
	ccd 0	ccd 1	ccd 2	ccd 3	ccd 6	ccd 7		ccd 0	ccd 1	ccd 2	ccd 3	ccd 6	ccd 7
level 1 events	44027	44151	48317	71200	52826	62748	grade 0 events	2566	2906	2900	22851	2679	2533
rejected events	38123	37486	42181	42366	46696	36404		5%	6%	6%	32%	5%	4%
rejected %	86%	84%	87%	59%	88%	58%	grade 1 events	21	24	18	165	27	40
								0%	0%	0%	0%	0%	0%
							grade 2 events	1200	1345	1212	2848	1167	5146
								2%	3%	2%	4%	2%	8%
							grade 3 events	641	607	535	973	579	2426
								1%	1%	1%	1%	1%	3%
							grade 4 events	499	595	533	1013	583	2393
								1%	1%	1%	1%	1%	3%
							grade 5 events	1720	1823	1707	1975	2076	6046
								3%	4%	3%	2%	3%	9%
							grade 6 events	1006	1216	958	1174	1123	13862
								2%	2%	1%	1%	2%	22%
							grade 7 events	36374	35635	40454	40201	44592	30302
								82%	80%	83%	56%	84%	48%

2.2 Compared Parameters

Parameter	Planned	Actual	Parameter	Planned	Actual
Instrument	ACIS	ACIS	Obspar format version number	7	7
Detector	ACIS-012367	ACIS-012367	Obspar file type	PREDICTED	ACTUAL
Grating	NONE	NONE	Obspar update status	NONE	UPDATED
Data mode	FAINT	FAINT	Number of optional ACIS chips dropped	0	0
Observation mode	POINTING	POINTING	On-chip summing requested	N	N
[deg] Pointing RA	15.787234	15.87046726028626	Subarray requested	NONE	NONE
[deg] Pointing Dec	-72.145722	-72.15581494830009	Alternating exposures requested	N	N
[deg] Pointing Roll	307.924829	308.2127373370696	[s] Primary exposure time	0.000000	3.2
[s] Window start time (MET)	123552064.184000	123552064.184000			
[s] Window stop time (MET)	126144064.184000	126144064.184000			
[mm] SIM focus pos	-0.782348	-0.7809083437167272			
[mm] SIM defocus	0	0.001439871863259334			
[mm] SIM translation stage pos	-233.592463	-233.5874344608287			
[mm] SIM translation stage offset	0	-0.005018542100998502			
[s] Observation start time (MET)	123975679.184000	123975303.19647			
Observation start date	2001-12-05T21:40:15	2001-12-05T21:35:03			
[s] Observation end time (MET)	123983479.184000	123983612.8718			
Observation end date	2001-12-05T23:50:15	2001-12-05T23:53:32			
Read mode	TIMED	TIMED			

2.3 Aspect



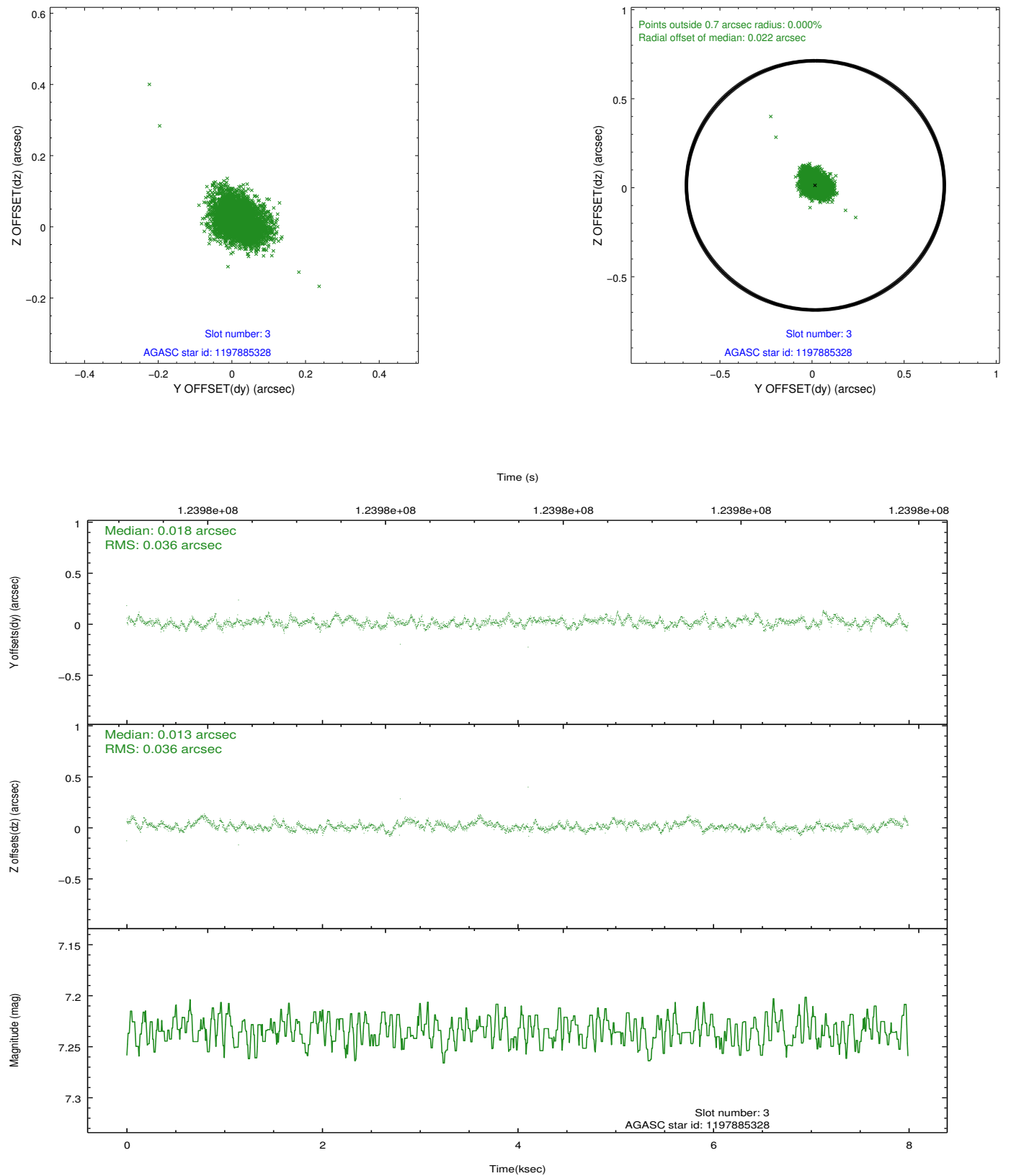


Slot Statistics

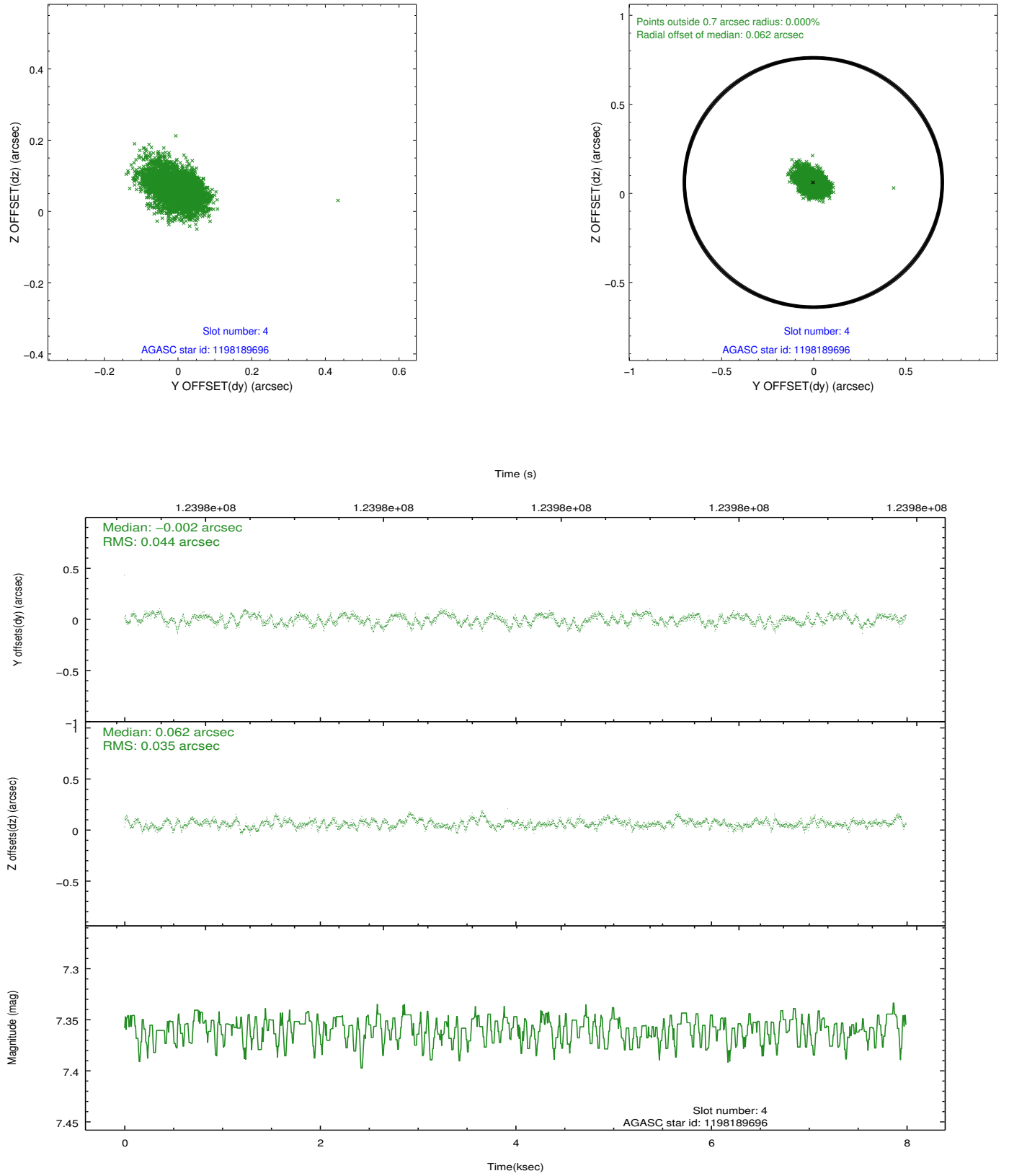
slot	status	id	mag	n_pts	med_dy	med_dz	dr1	dr2	ra	dec	mean_y	mean_z
0	FID	ACIS-I-1	7.25	1950	-0.024	0.062	0.006	0.011	0.000000	0.000000	936.87	-831.59
1	FID	ACIS-I-5	7.24	1950	-0.042	0.038	0.006	0.010	0.000000	0.000000	-1810.85	1065.55
2	FID	ACIS-I-6	7.26	1950	-0.025	-0.030	0.006	0.011	0.000000	0.000000	401.67	1710.76
3	GUIDE	1197885328	7.23	3900	0.018	0.013	0.053	0.089	16.283090	-71.733943	-823.67	1351.37
4	GUIDE	1198189696	7.36	3900	-0.002	0.062	0.059	0.095	15.223750	-72.697522	1198.49	-1697.89
5	GUIDE	1197750936	7.57	3898	0.008	0.016	0.050	0.079	15.387940	-71.549550	-1971.06	958.86
6	GUIDE	1198283128	8.01	3898	-0.119	-0.076	0.046	0.073	17.272580	-72.642428	2405.90	147.72
7	GUIDE	1197749416	10.27	3884	0.098	-0.018	0.139	0.223	13.610513	-71.871242	-2242.06	-1342.61

2.4 Star Slots

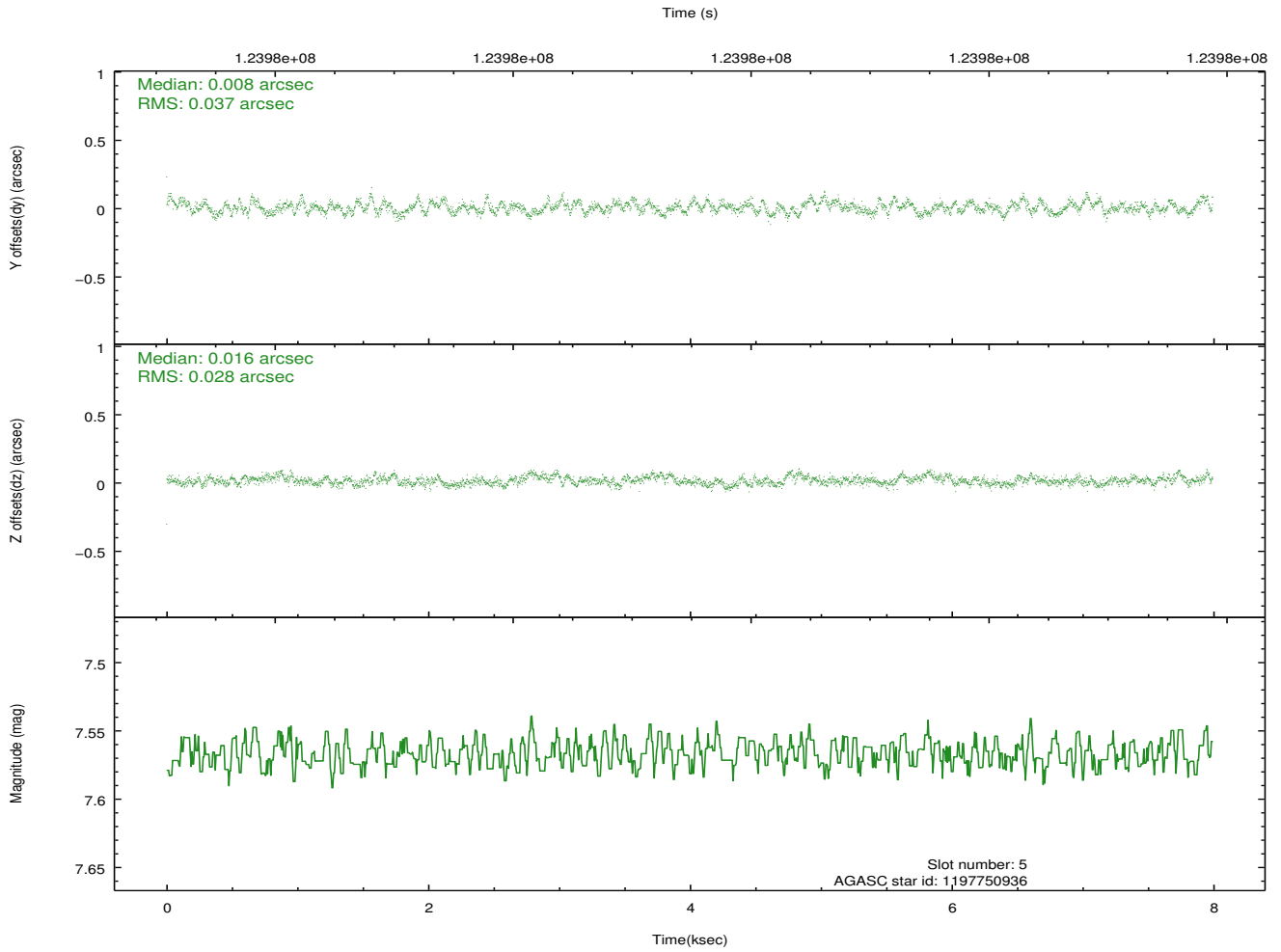
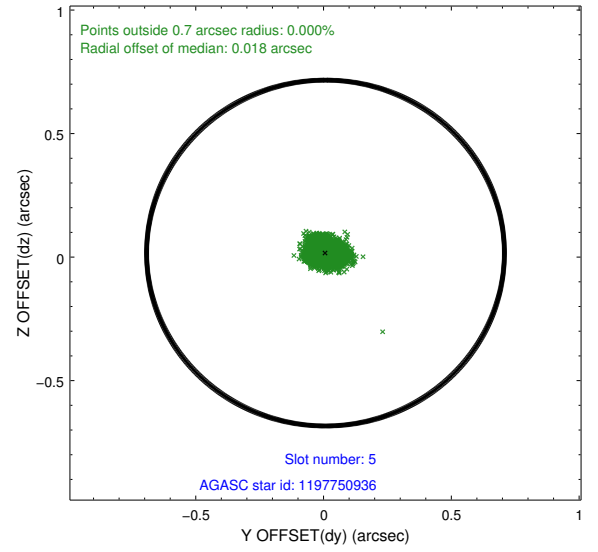
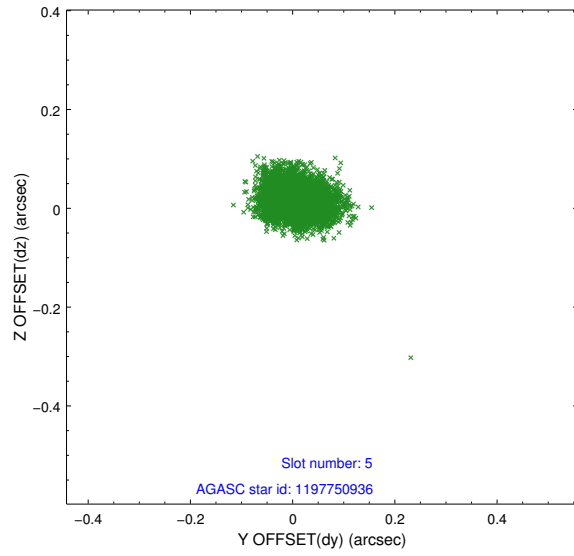
2.4.1 Slot 3



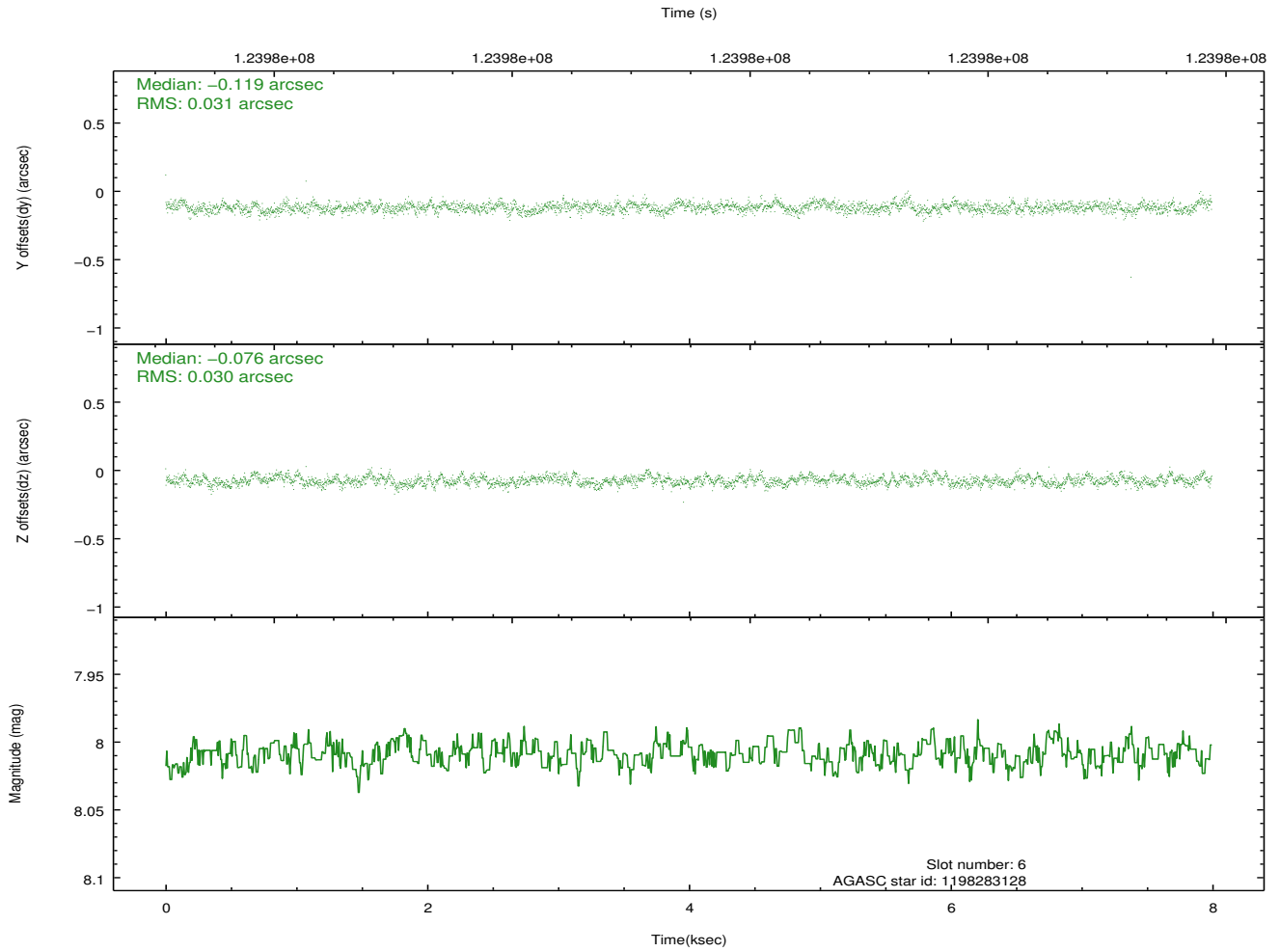
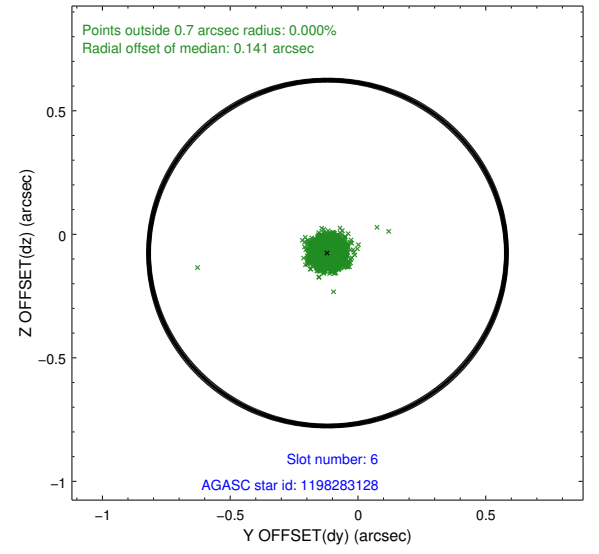
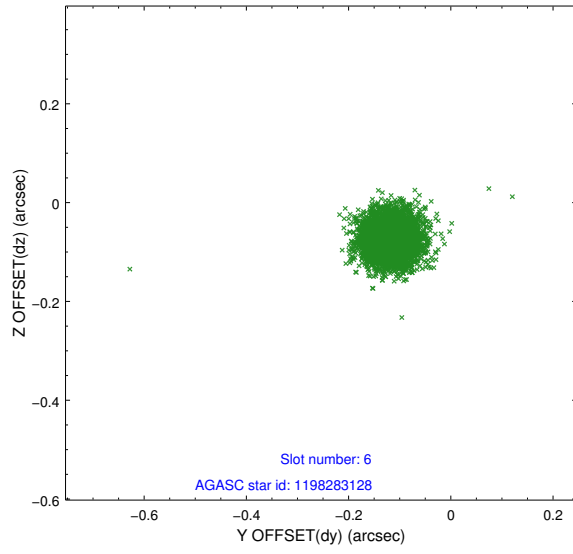
2.4.2 Slot 4



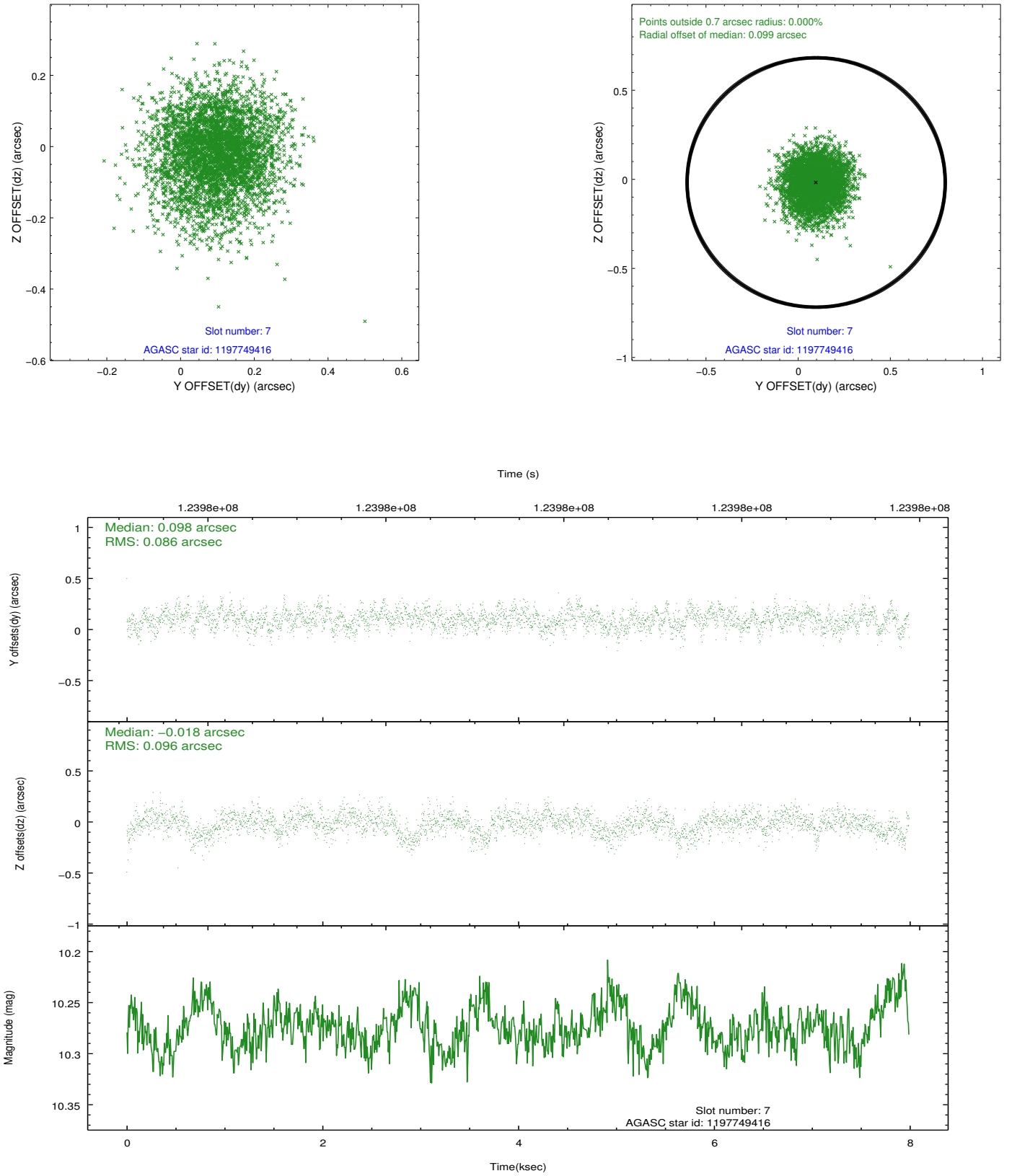
2.4.3 Slot 5



2.4.4 Slot 6

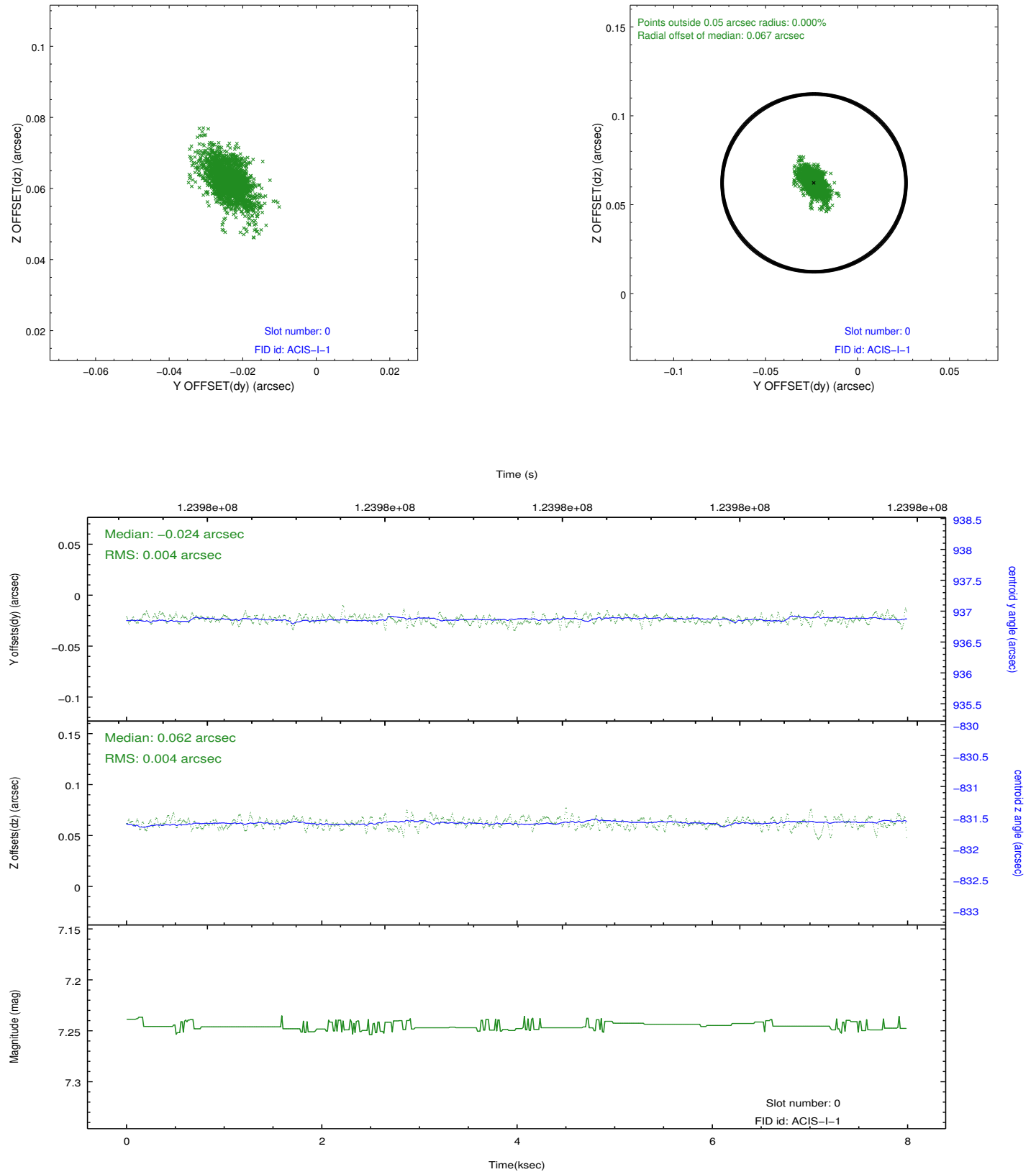


2.4.5 Slot 7

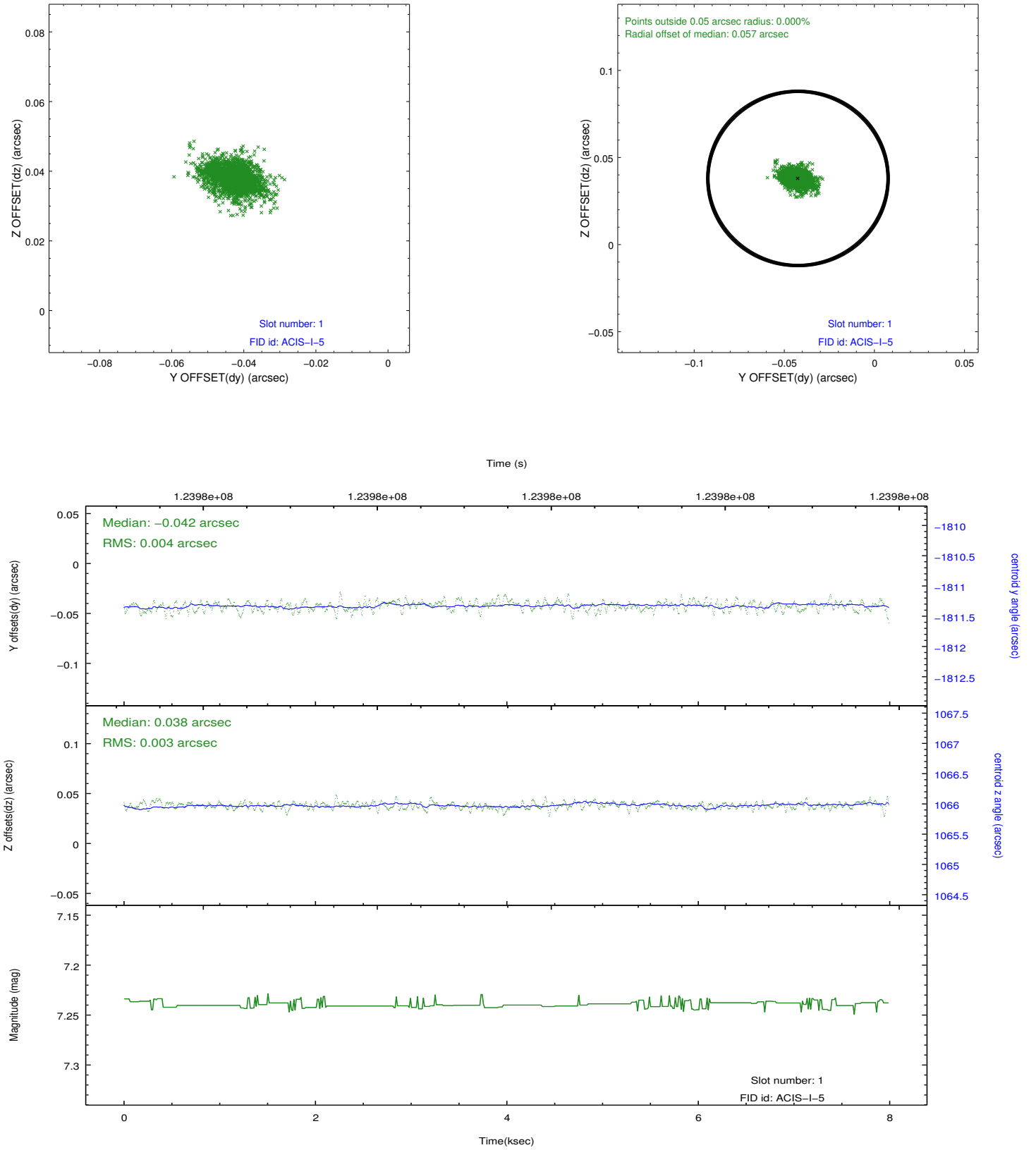


2.5 FID Slots

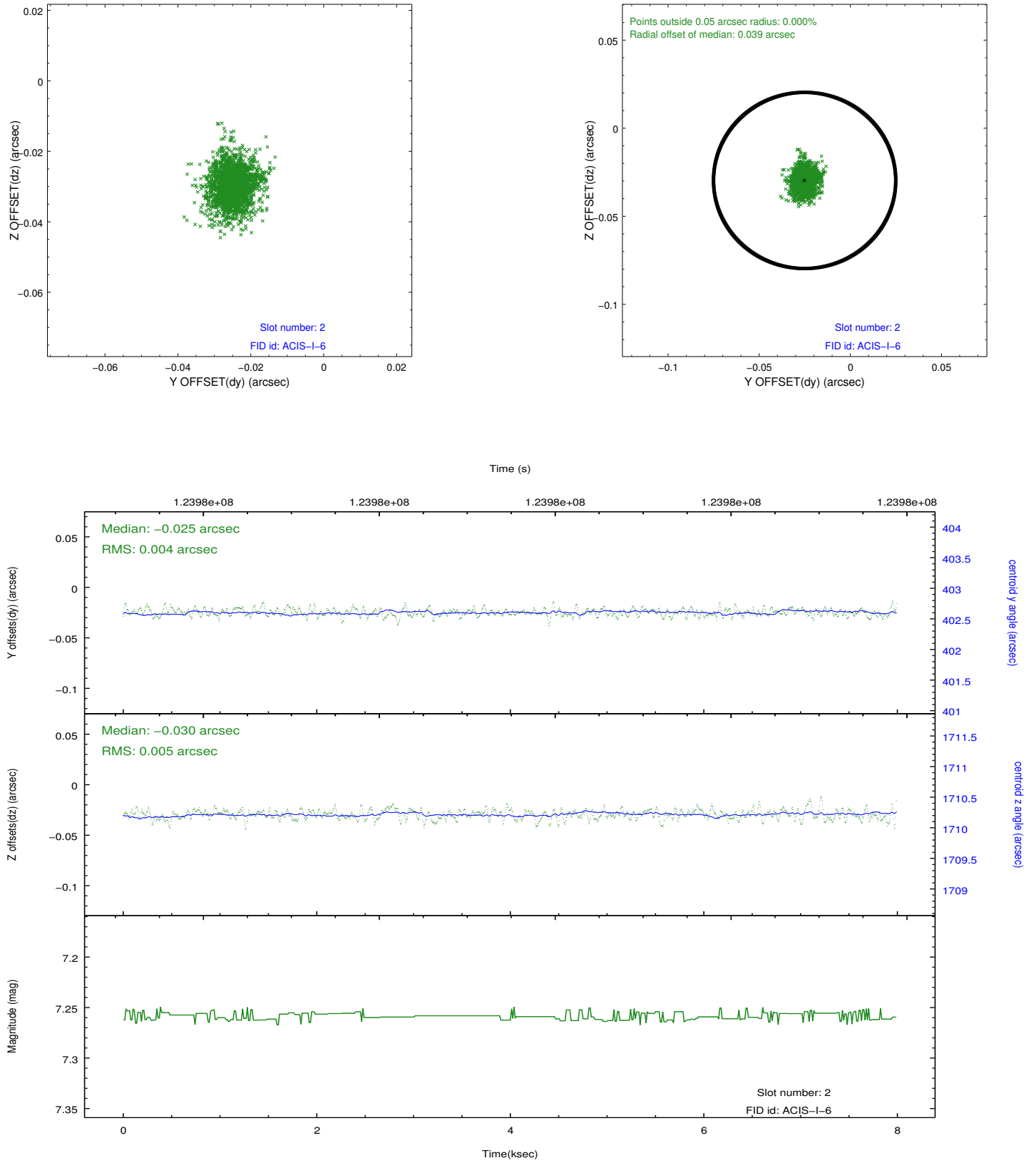
2.5.1 Slot 0



2.5.2 Slot 1



2.5.3 Slot 2



A Summary

A.1 Status

V&V Scientist	Jen Lauer
V&V Date (YYYY-MM-DD)	2012.09.28
V&V Edition	1
V&V Disposition and Status	OK
V&V Charge Time	7.561

A.2 Comments

Window constraint met.