

# V&V Reference Report

## L2 ASCDS Version : 7.6.10

Observation 2839 - L2 Version 001  
Chandra X-Ray Center

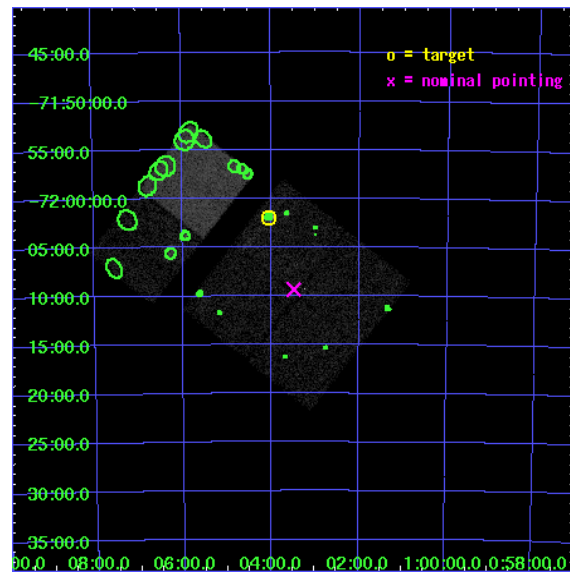
L2 Processing Date : Jan 21 2007

## Contents

<b>1</b>	<b>Front</b>	<b>2</b>
<b>2</b>	<b>OBI</b>	<b>3</b>
2.1	OBI . . . . .	3
2.1.1	Images . . . . .	3
2.1.2	Bias . . . . .	3
2.1.3	Parameters . . . . .	4
2.1.4	Events . . . . .	4
2.2	Compared Parameters . . . . .	5
2.3	Aspect . . . . .	6
2.4	Star Slots . . . . .	9
2.4.1	Slot 3 . . . . .	9
2.4.2	Slot 4 . . . . .	10
2.4.3	Slot 5 . . . . .	11
2.4.4	Slot 6 . . . . .	12
2.4.5	Slot 7 . . . . .	13
2.5	FID Slots . . . . .	14
2.5.1	Slot 0 . . . . .	14
2.5.2	Slot 1 . . . . .	15
2.5.3	Slot 2 . . . . .	16
<b>3</b>	<b>Point Sources</b>	<b>17</b>
<b>A</b>	<b>Summary</b>	<b>18</b>
A.1	Status . . . . .	18
A.2	Comments . . . . .	18

# 1 Front

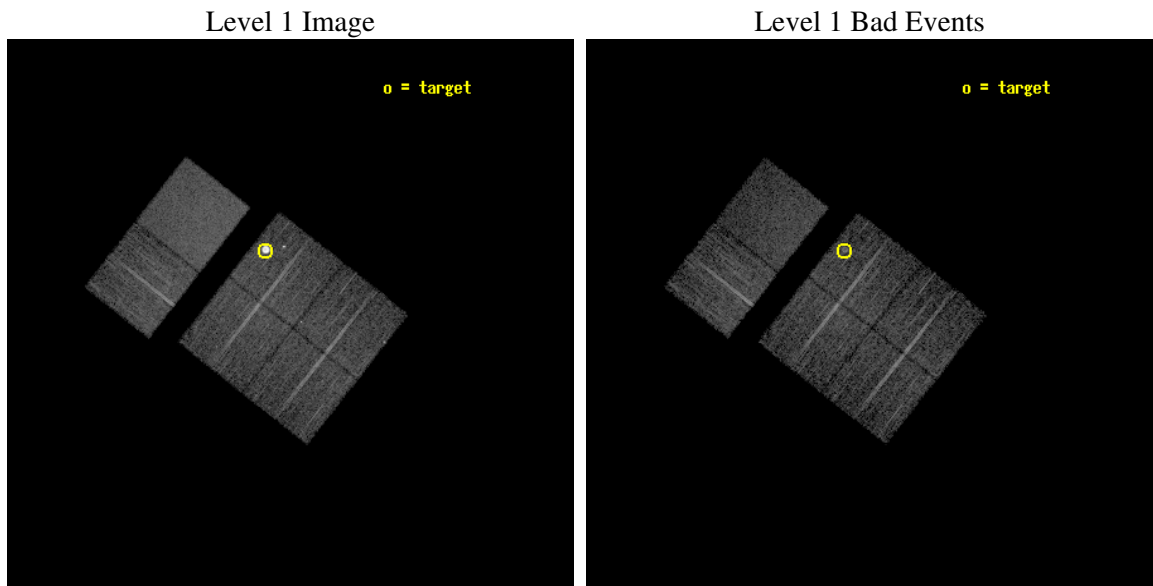
seq_num	590228
obs_id	2839
title	AO3A ACIS-I CALIBRATION OBSERVATIONS OF E0102-72
observer	Dr. CXC Calibration
object	E0102-72.3 [Chip I3, T=120, Offsets=-4,6,0]
dtcycle	0
cycle	P
ra_targ	16.01
dec_targ	-72.032028
ra_nom	15.870467260286
dec_nom	-72.1558149483
roll_nom	308.21273733707
revision	2
ontime	7558.4000070393
livetime	7462.6909950281
ontime0	7558.4000070393
ontime1	7558.4000070393
ontime2	7558.4000070393
ontime3	7558.4000070393
ontime6	7558.4000070393
ontime7	7558.4000070393
l2events	74348



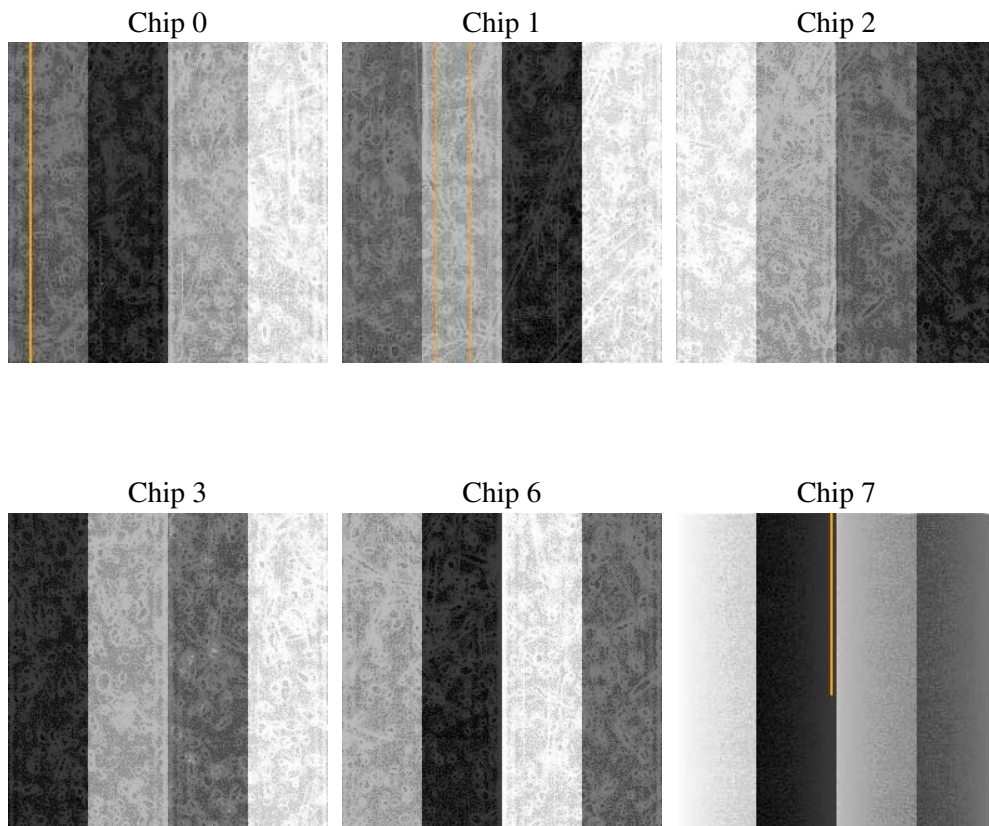
## 2 OBI

### 2.1 OBI

#### 2.1.1 Images



#### 2.1.2 Bias



### 2.1.3 Parameters

obi_num	1
ascdsver	7.6.10
caldbver	3.3.0
date	2007-01-20T12:51:07
revision	2

sched_exp_time	7800.000000
ontime	7558.4000070393
ontime0	7558.4000070393
ontime1	7558.4000070393
ontime2	7558.4000070393
ontime3	7558.4000070393
ontime6	7558.4000070393
ontime7	7558.4000070393
l1events	323269

### 2.1.4 Events

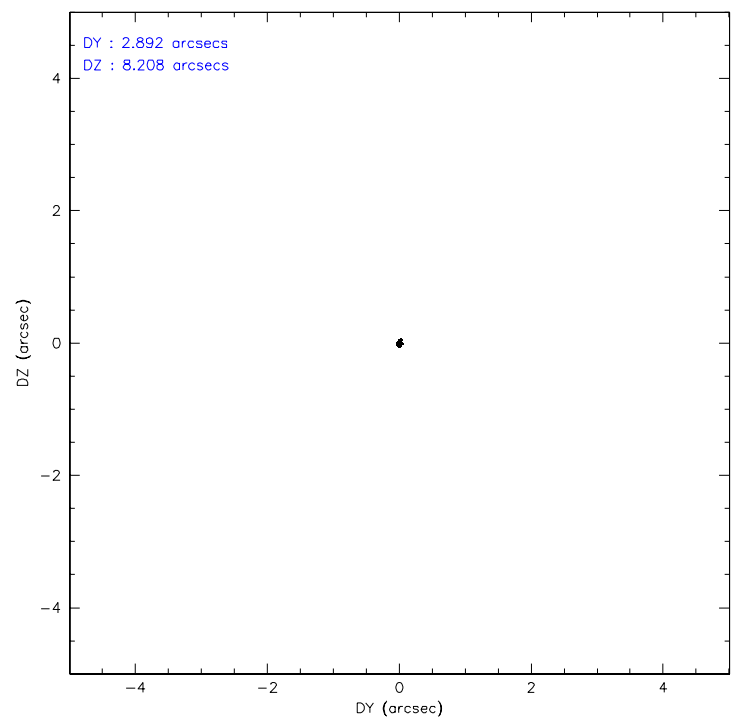
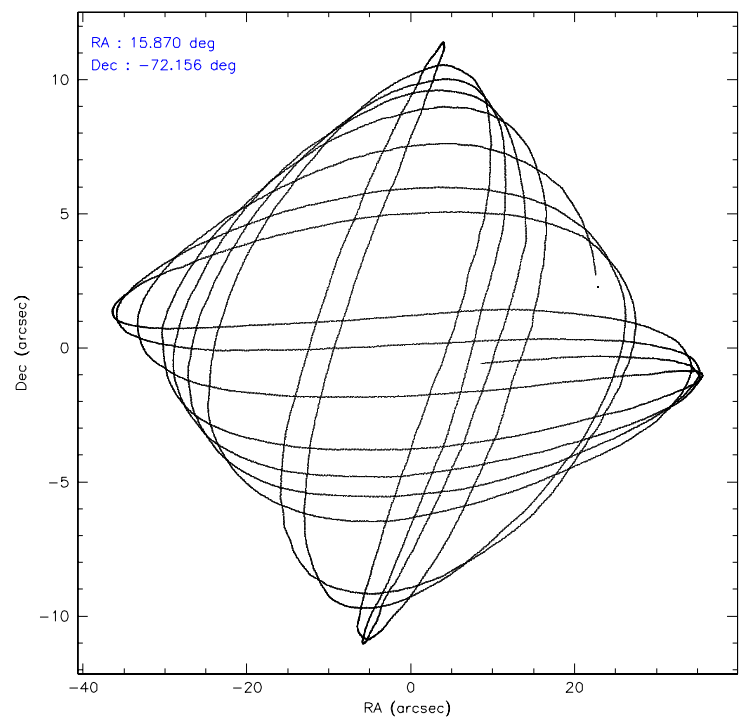
	ccd 0	ccd 1	ccd 2	ccd 3	ccd 6	ccd 7
level 1 events	44027	44151	48317	71200	52826	62748
rejected events	38125	37491	42186	42365	46697	36410
rejected %	86%	84%	87%	59%	88%	58%

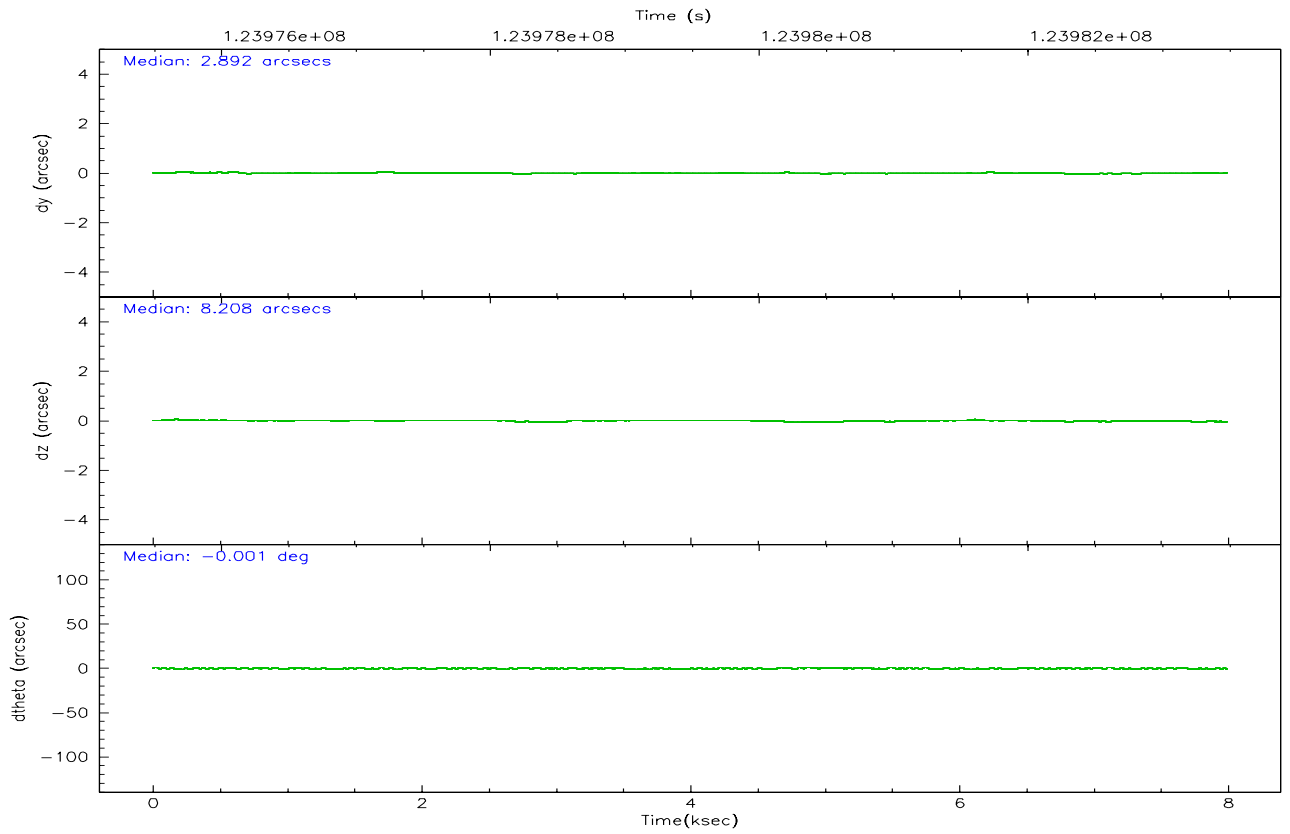
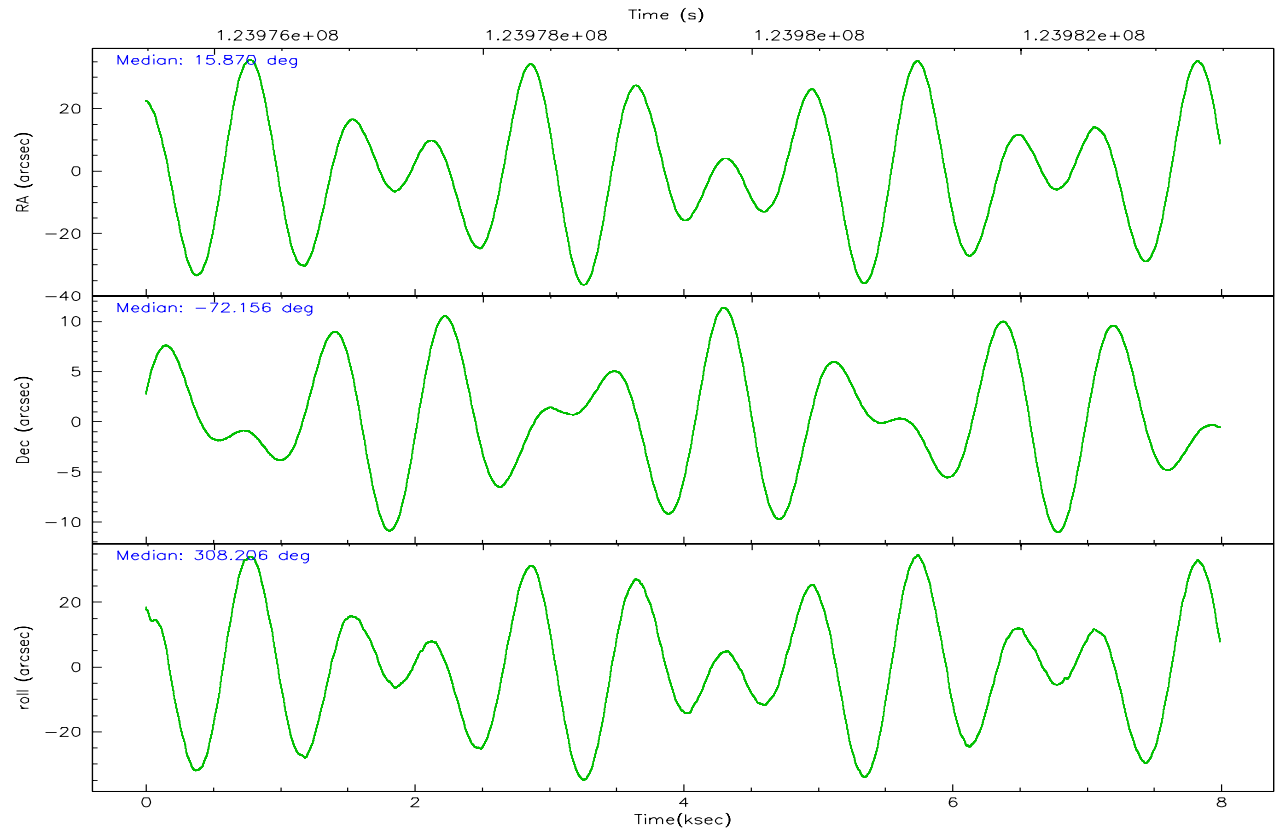
	ccd 0	ccd 1	ccd 2	ccd 3	ccd 6	ccd 7
grade 0 events	2566	2906	2900	22852	2679	2532
	5%	6%	6%	32%	5%	4%
grade 1 events	21	24	18	165	27	40
	0%	0%	0%	0%	0%	0%
grade 2 events	1200	1345	1212	2847	1167	5147
	2%	3%	2%	3%	2%	8%
grade 3 events	641	607	535	973	579	2423
	1%	1%	1%	1%	1%	3%
grade 4 events	499	595	533	1013	583	2393
	1%	1%	1%	1%	1%	3%
grade 5 events	1720	1823	1707	1975	2076	6045
	3%	4%	3%	2%	3%	9%
grade 6 events	1006	1216	958	1174	1124	13863
	2%	2%	1%	1%	2%	22%
grade 7 events	36374	35635	40454	40201	44591	30305
	82%	80%	83%	56%	84%	48%

## 2.2 Compared Parameters

Parameter	Planned	Actual	Parameter	Planned	Actual
Instrument	ACIS	ACIS	Obspar format version number	6	6
Detector	ACIS-012367	ACIS-012367	Obspar file type	PREDICTED	ACTUAL
Grating	NONE	NONE	Obspar update status	NONE	UPDATED
Data mode	FAINT	FAINT	Number of optional ACIS chips dropped	0	0
Observation mode	POINTING	POINTING	On-chip summing requested	N	N
Pointing RA	15.787234	15.87046726028626	Subarray requested	NONE	NONE
Pointing Dec	-72.145722	-72.15581494830008	Alternating exposures requested	N	N
Pointing Roll	307.924829	308.2127373370696	Primary exposure time	0.000000	3.2
Window start time	123552064.184000	123552064.184000			
Window stop time	126144064.184000	126144064.184000			
SIM focus pos (mm)	-0.782348	-0.7809083437167272			
SIM defocus (mm)	0	0.001439871863259334			
SIM translation stage pos (mm)	-233.592463	-233.5874344608287			
SIM translation stage offset (mm)	0	-0.005018542100998502			
Observation start time	123975679.184000	123975303.19647			
Observation start date	2001-12-05T21:40:15	2001-12-05T21:35:03			
Observation end time	123983479.184000	123983612.8718			
Observation end date	2001-12-05T23:50:15	2001-12-05T23:53:32			
Read mode	TIMED	TIMED			

## 2.3 Aspect





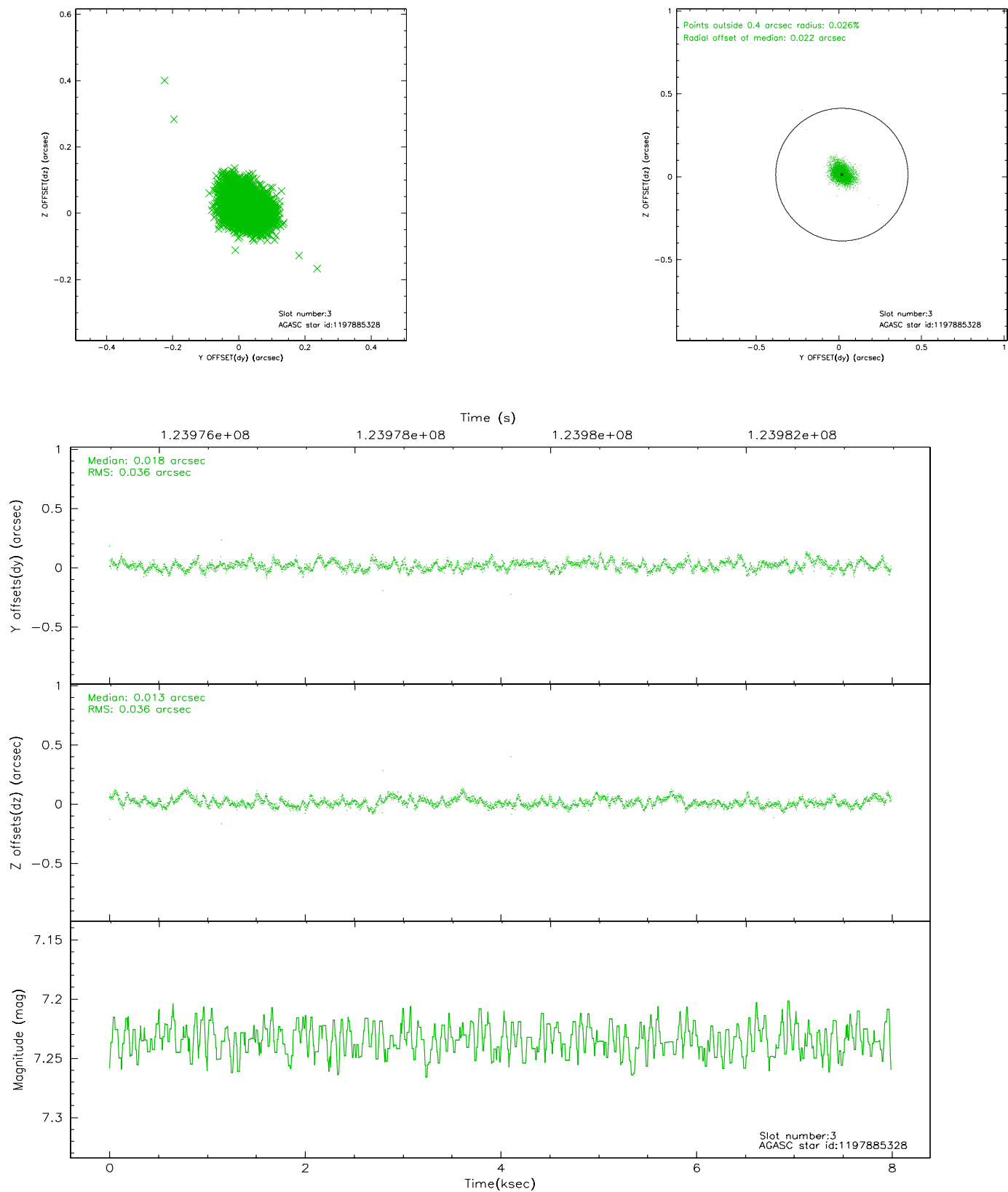
### Slot Statistics

slot	status	id	mag	n_pts	med_dy	med_dz	dr1	dr2	ra	dec	mean_y	mean_z
0	FID	ACIS-I-1	7.25	1950	-0.044	0.089	0.006	0.010	0.000000	0.000000	936.85	-831.55
1	FID	ACIS-I-5	7.24	1950	-0.012	0.030	0.005	0.009	0.000000	0.000000	-1810.82	1065.55
2	FID	ACIS-I-6	7.26	1950	-0.035	-0.049	0.006	0.010	0.000000	0.000000	401.66	1710.76
3	GUIDE	1197885328	7.23	3900	0.018	0.013	0.053	0.089	16.283090	-71.733943	-823.67	1351.37
4	GUIDE	1198189696	7.36	3900	-0.002	0.062	0.059	0.095	15.223750	-72.697522	1198.49	-1697.89
5	GUIDE	1197750936	7.57	3898	0.008	0.016	0.050	0.079	15.387940	-71.549550	-1971.06	958.86
6	GUIDE	1198283128	8.01	3898	-0.119	-0.076	0.046	0.073	17.272580	-72.642428	2405.90	147.72
7	GUIDE	1197749416	10.27	3884	0.098	-0.018	0.139	0.223	13.610513	-71.871242	-2242.06	-1342.61

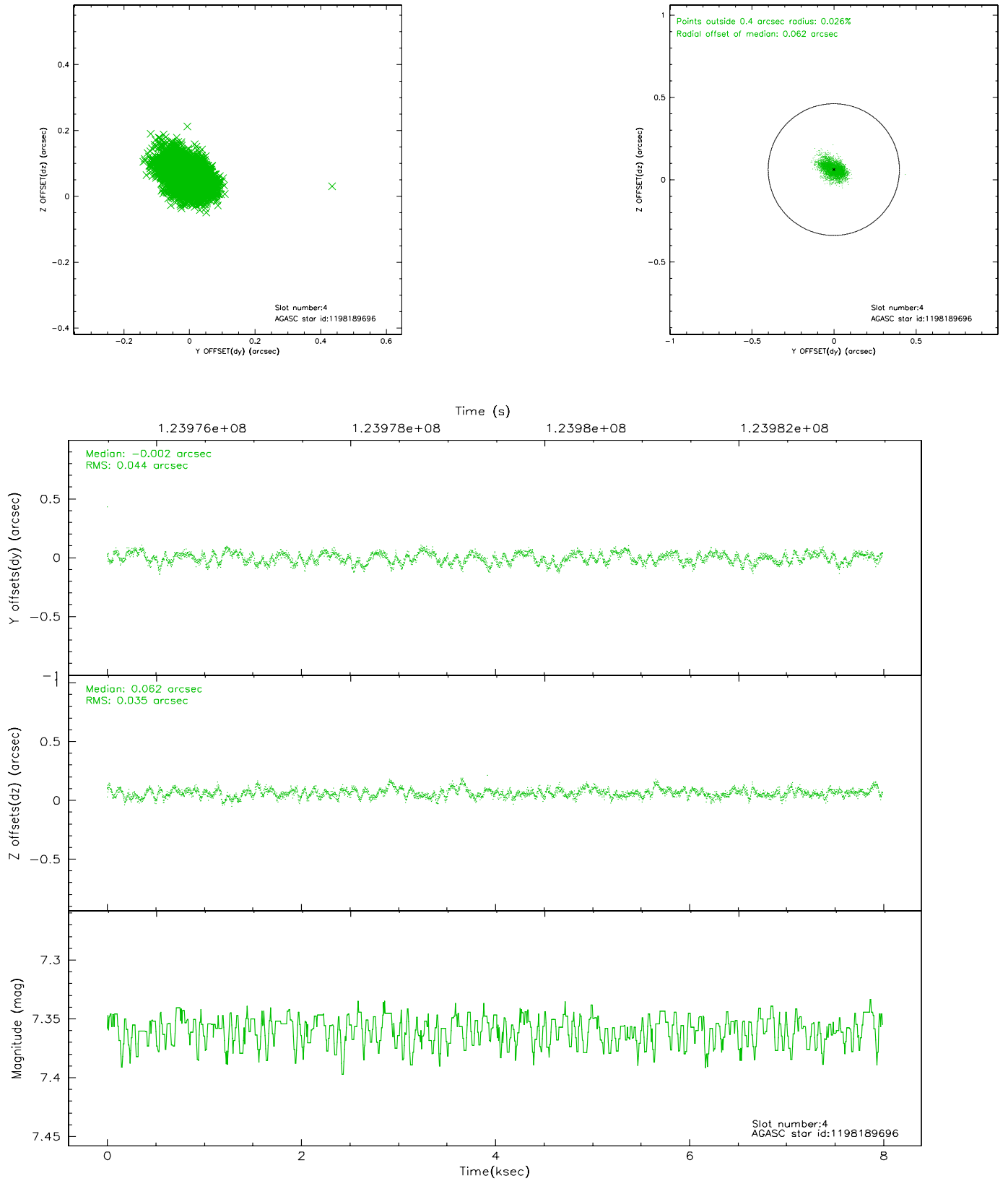


## 2.4 Star Slots

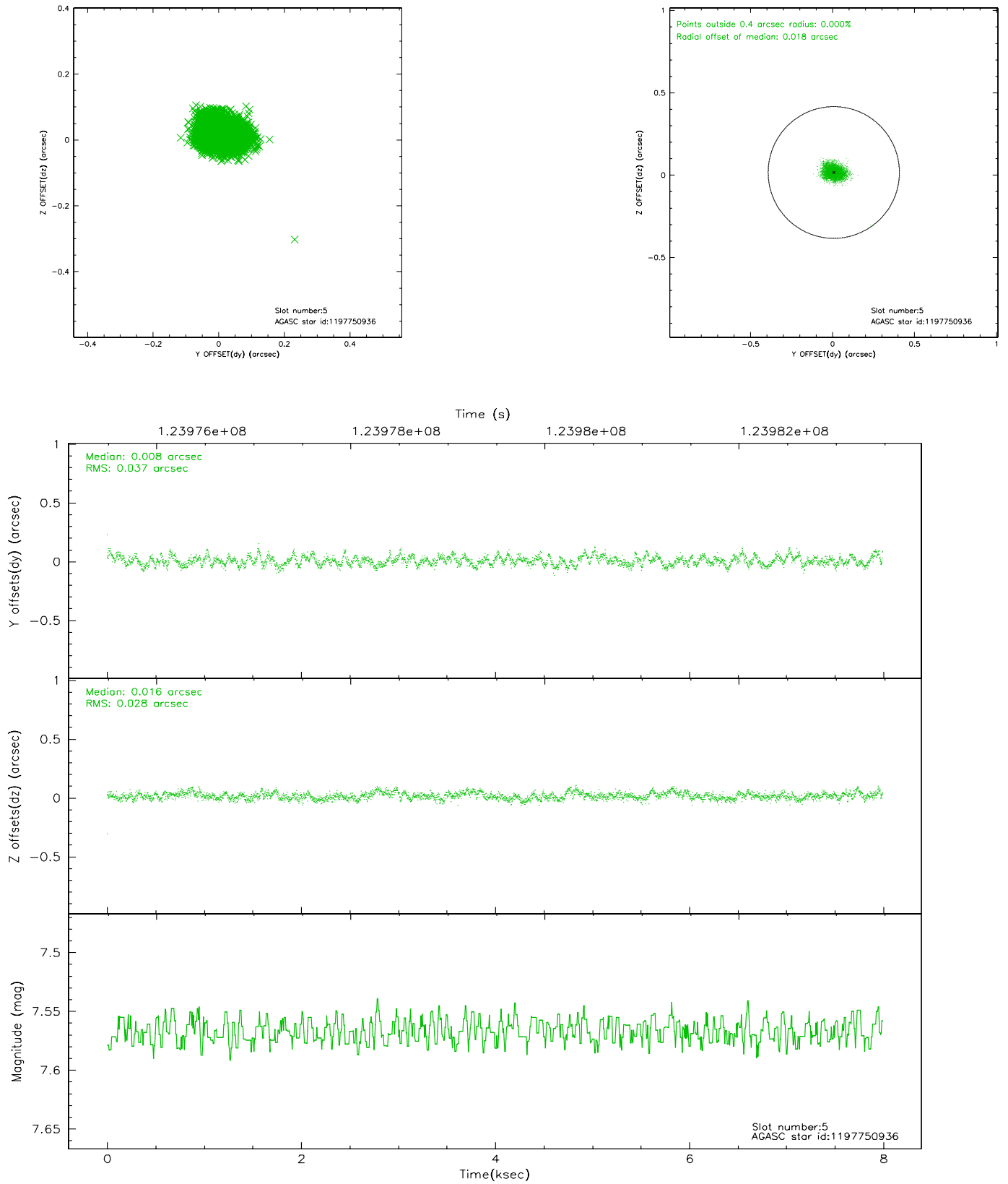
### 2.4.1 Slot 3



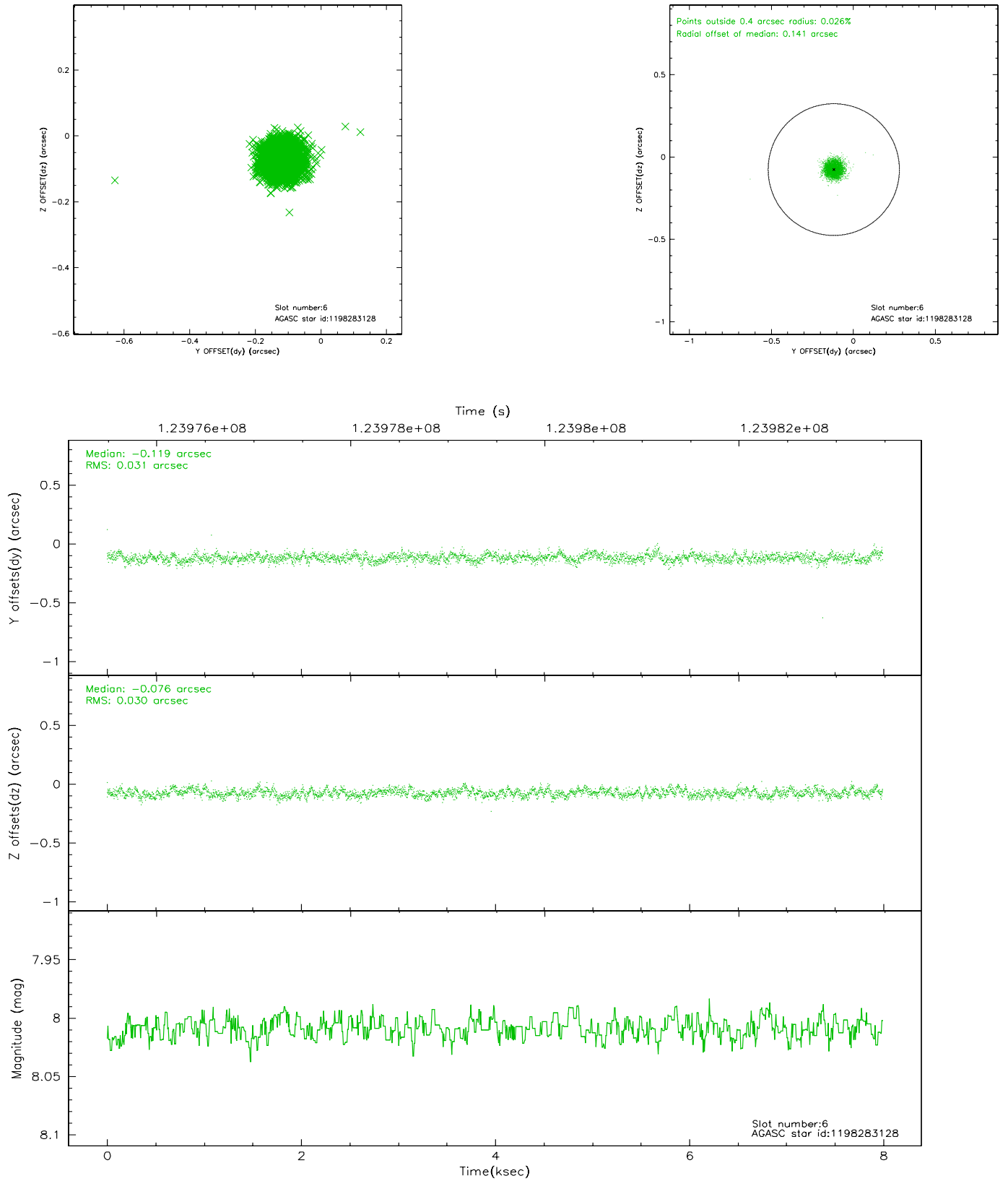
## 2.4.2 Slot 4



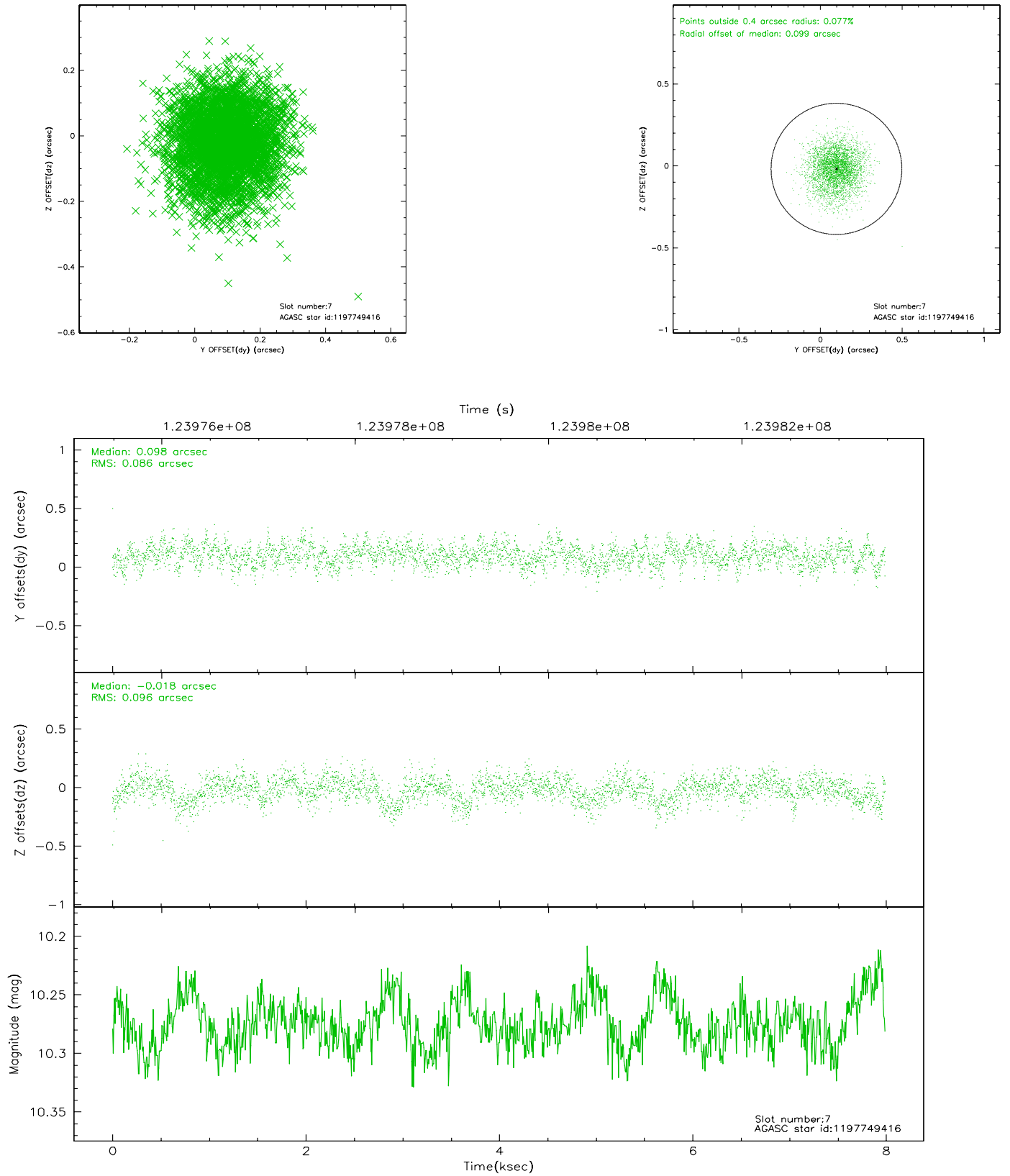
### 2.4.3 Slot 5



## 2.4.4 Slot 6

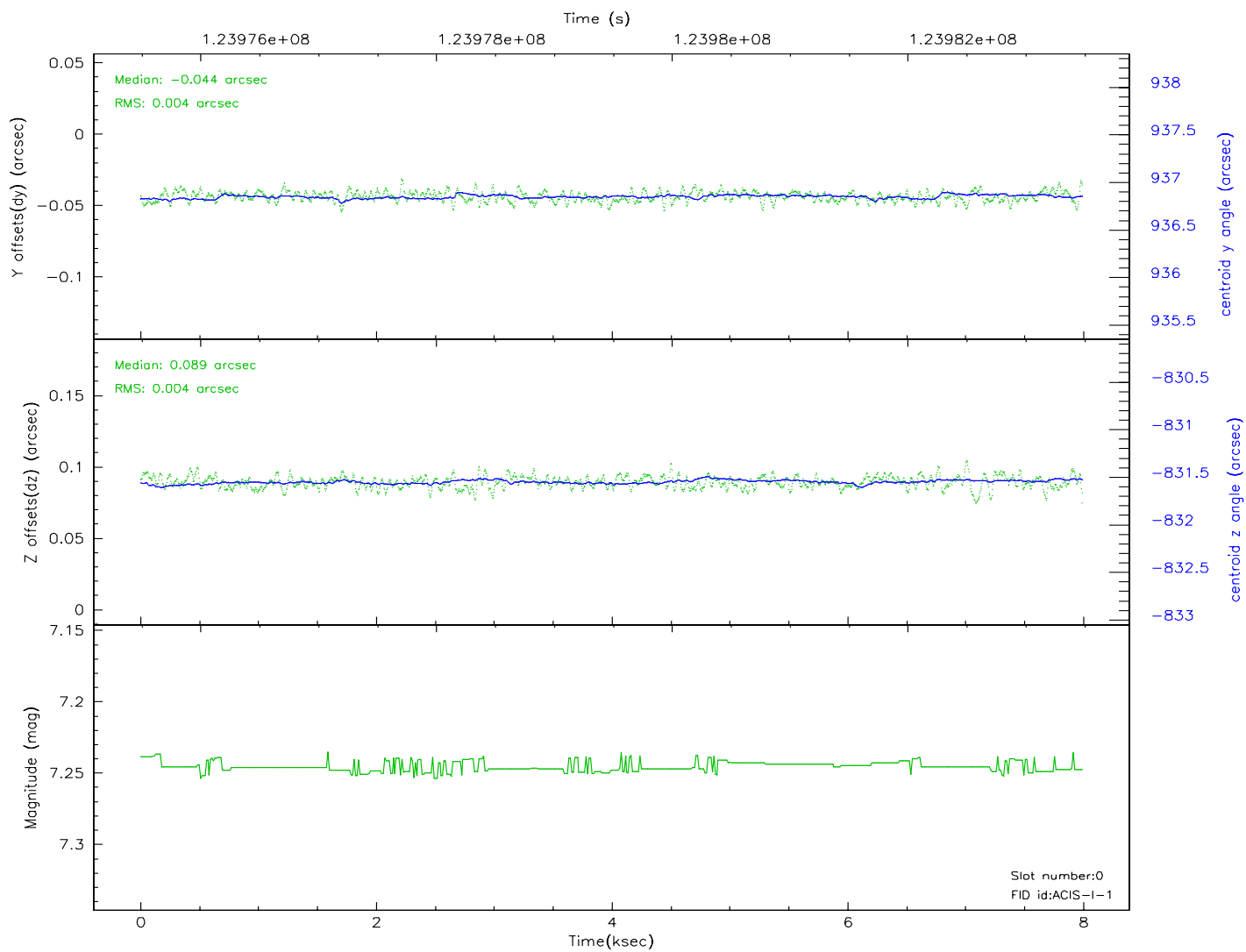
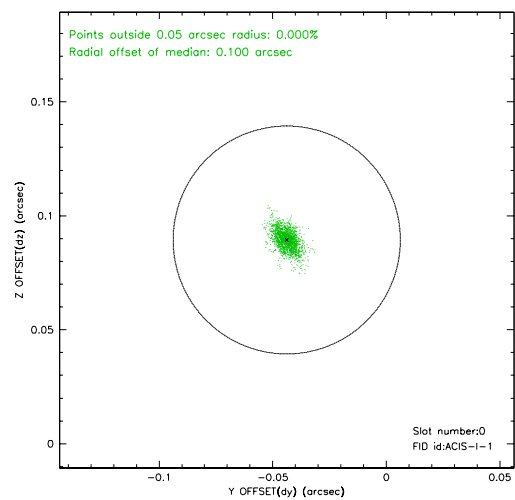
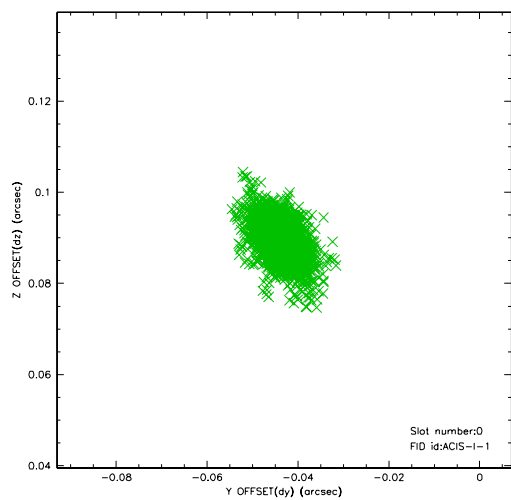


## 2.4.5 Slot 7

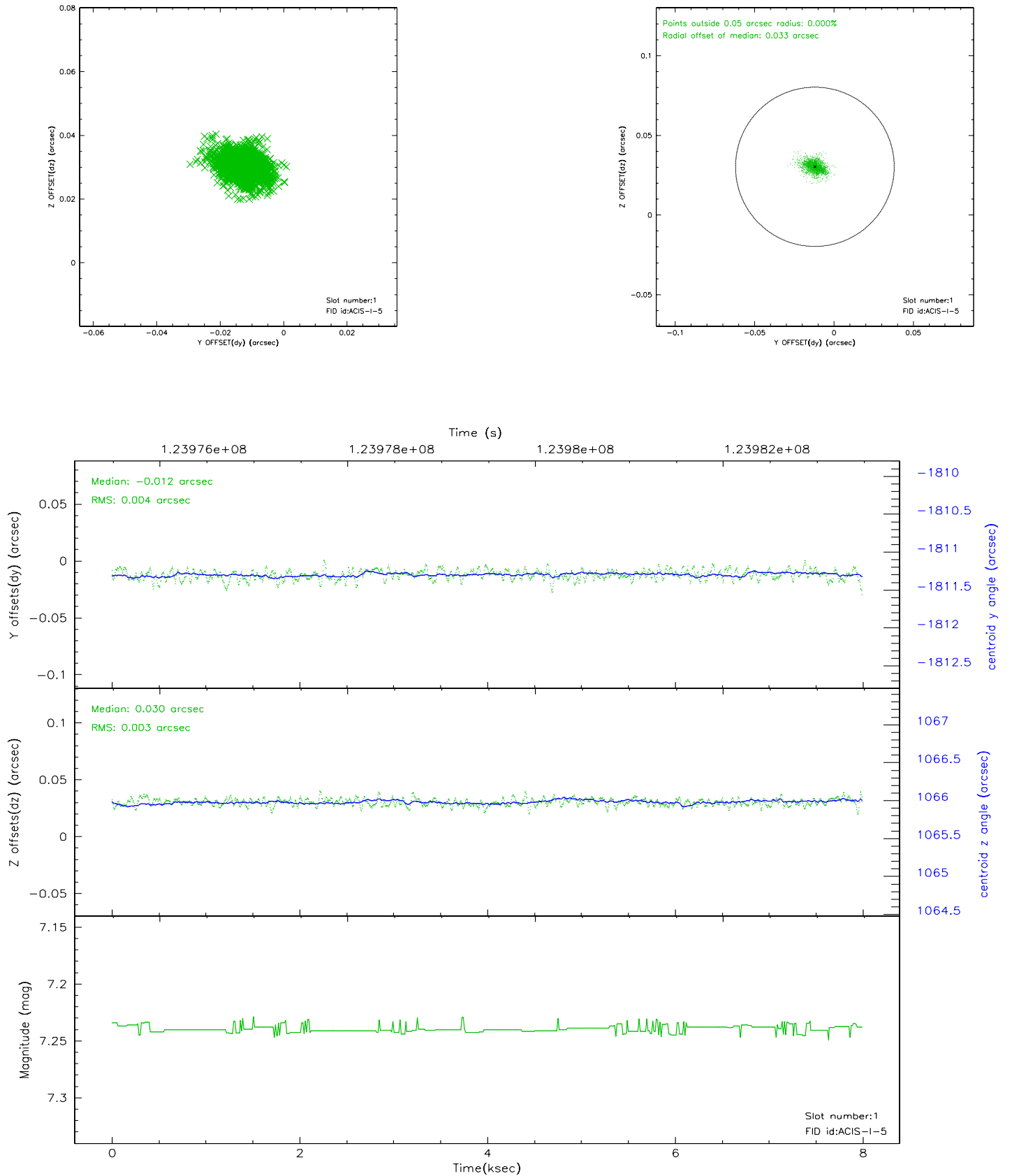


## 2.5 FID Slots

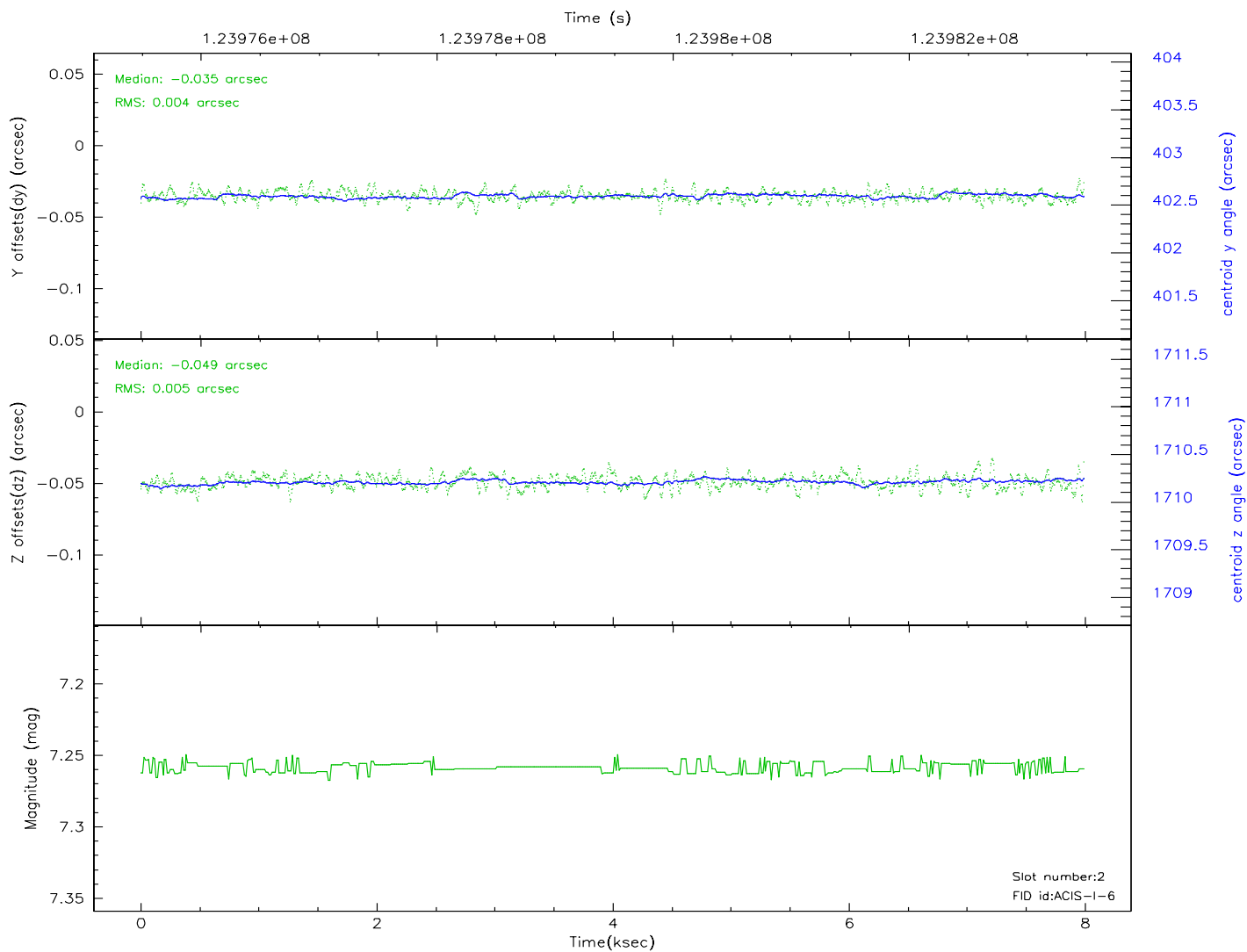
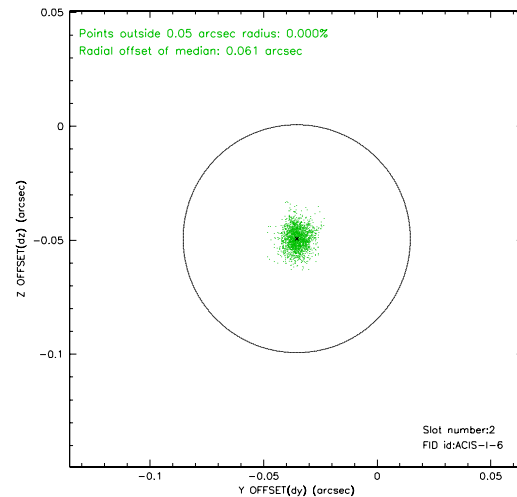
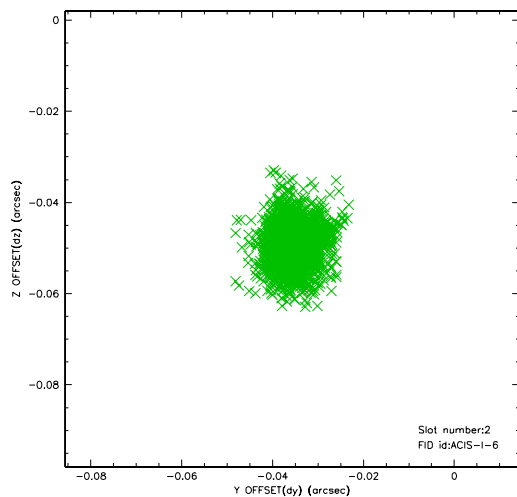
### 2.5.1 Slot 0



## 2.5.2 Slot 1

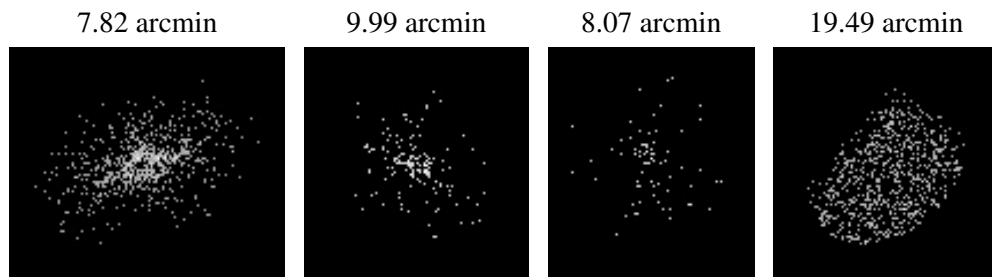


## 2.5.3 Slot 2





### 3 Point Sources



## A Summary

### A.1 Status

V&V Scientist	Beth Sundheim
V&V Date (YYYY-MM-DD)	2007.01.21
V&V Edition	1
V&V Disposition and Status	OK
V&V Charge Time	7.561

### A.2 Comments