

V&V Reference Report

L2 ASCDS Version : 7.6.8.1

Observation 2789 - L2 Version 001
Chandra X-Ray Center

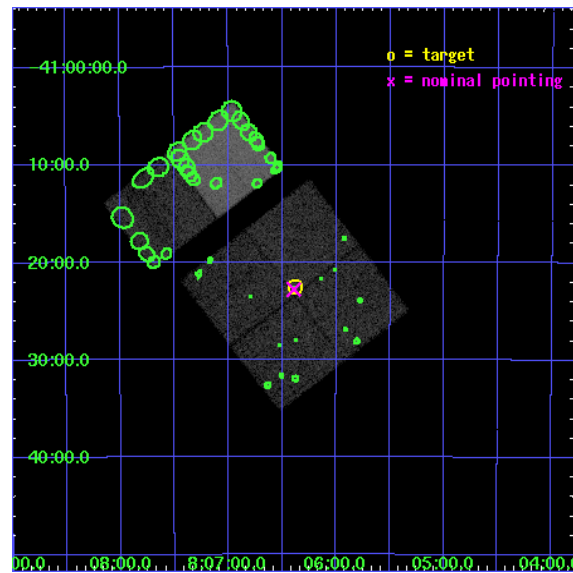
L2 Processing Date : Sep 2 2006

Contents

1	Front	2
2	OBI	3
2.1	OBI	3
2.1.1	Images	3
2.1.2	Bias	3
2.1.3	Parameters	4
2.1.4	Events	4
2.2	Compared Parameters	5
2.3	Aspect	6
2.4	Star Slots	9
2.4.1	Slot 3	9
2.4.2	Slot 4	10
2.4.3	Slot 5	11
2.4.4	Slot 6	12
2.4.5	Slot 7	13
2.5	FID Slots	14
2.5.1	Slot 0	14
2.5.2	Slot 1	15
2.5.3	Slot 2	16
3	Point Sources	17
A	Summary	18
A.1	Status	18
A.2	Comments	18

1 Front

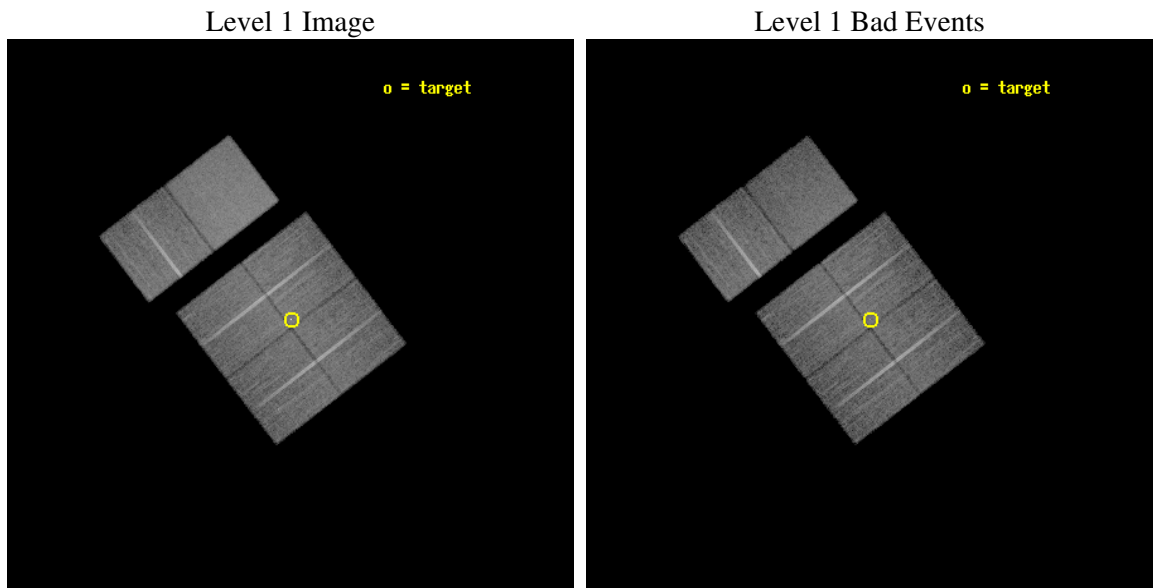
seq_num	500239
obs_id	2789
title	ASTROMETRIC STUDY OF ISOLATED NEUTRON STARS
observer	Dr Christian Motch
object	RX J0806-4123
dtcycle	0
cycle	P
ra_targ	121.595
dec_targ	-41.375833
ra_nom	121.59803459369
dec_nom	-41.37989212958
roll_nom	322.43820979438
revision	2
ontime	17910.40001668
livetime	17683.607747321
ontime0	17907.159046426
ontime1	17910.40001668
ontime2	17910.40001668
ontime3	17910.40001668
ontime6	17907.159026504
ontime7	17910.40001668
l2events	128624



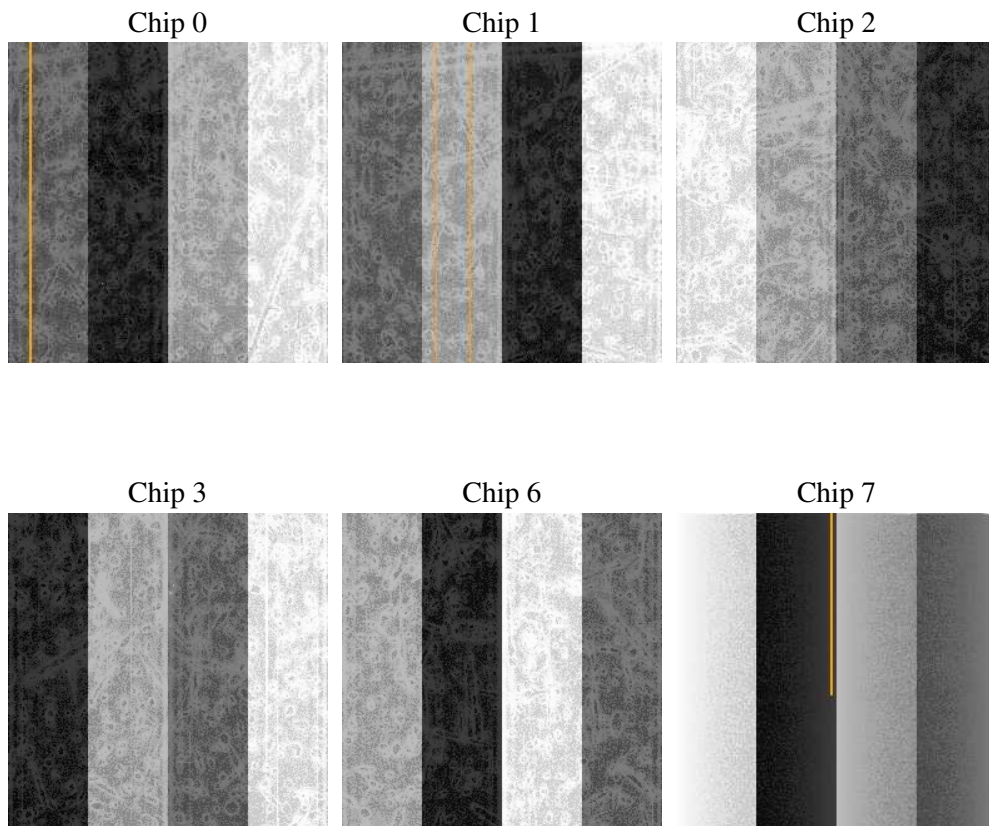
2 OBI

2.1 OBI

2.1.1 Images



2.1.2 Bias



2.1.3 Parameters

obi_num	0
ascdsver	7.6.8.1
caldsver	3.2.3
date	2006-09-02T14:14:25
revision	2

sched_exp_time	18164.216000
ontime	17916.271453634
ontime0	17913.03048338
ontime1	17916.271453634
ontime2	17916.271453634
ontime3	17916.271453634
ontime6	17913.030463457
ontime7	17916.271453634
l1events	763209

2.1.4 Events

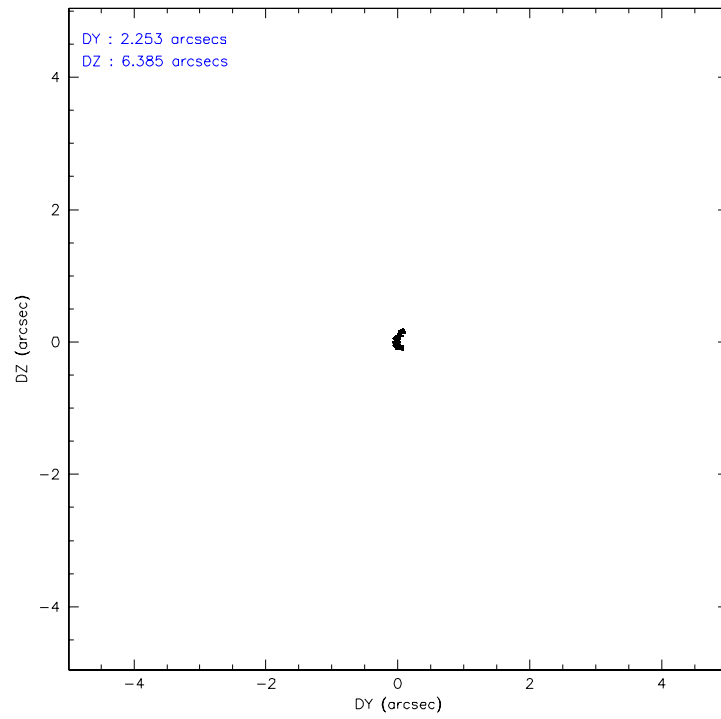
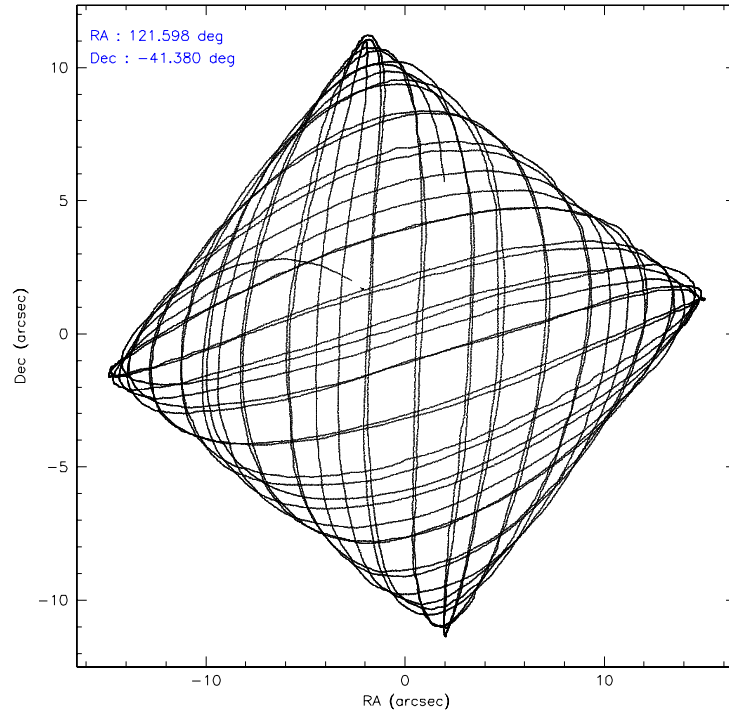
	ccd 0	ccd 1	ccd 2	ccd 3	ccd 6	ccd 7
level 1 events	111549	114308	122348	124930	128089	161985
rejected events	96131	98505	107462	108768	112703	98281
rejected %	86%	86%	87%	87%	87%	60%

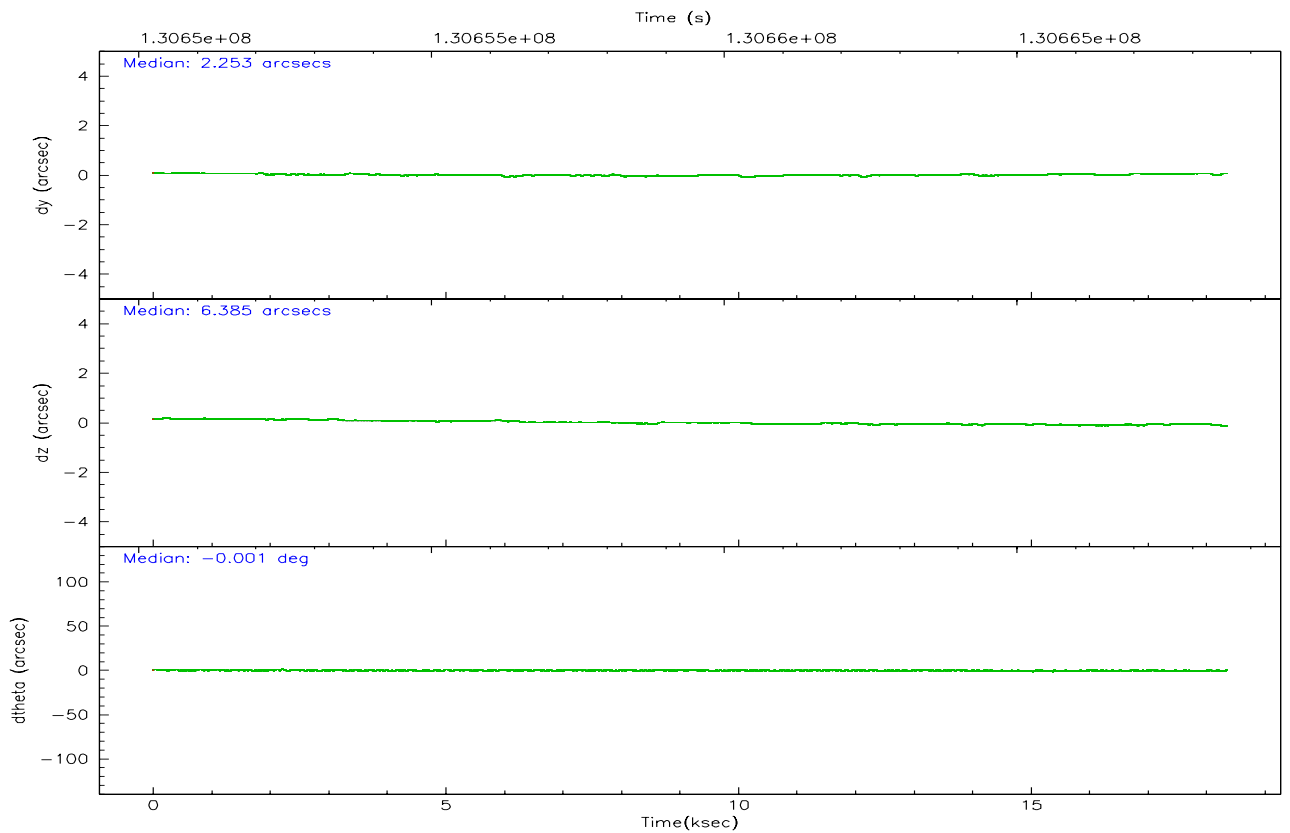
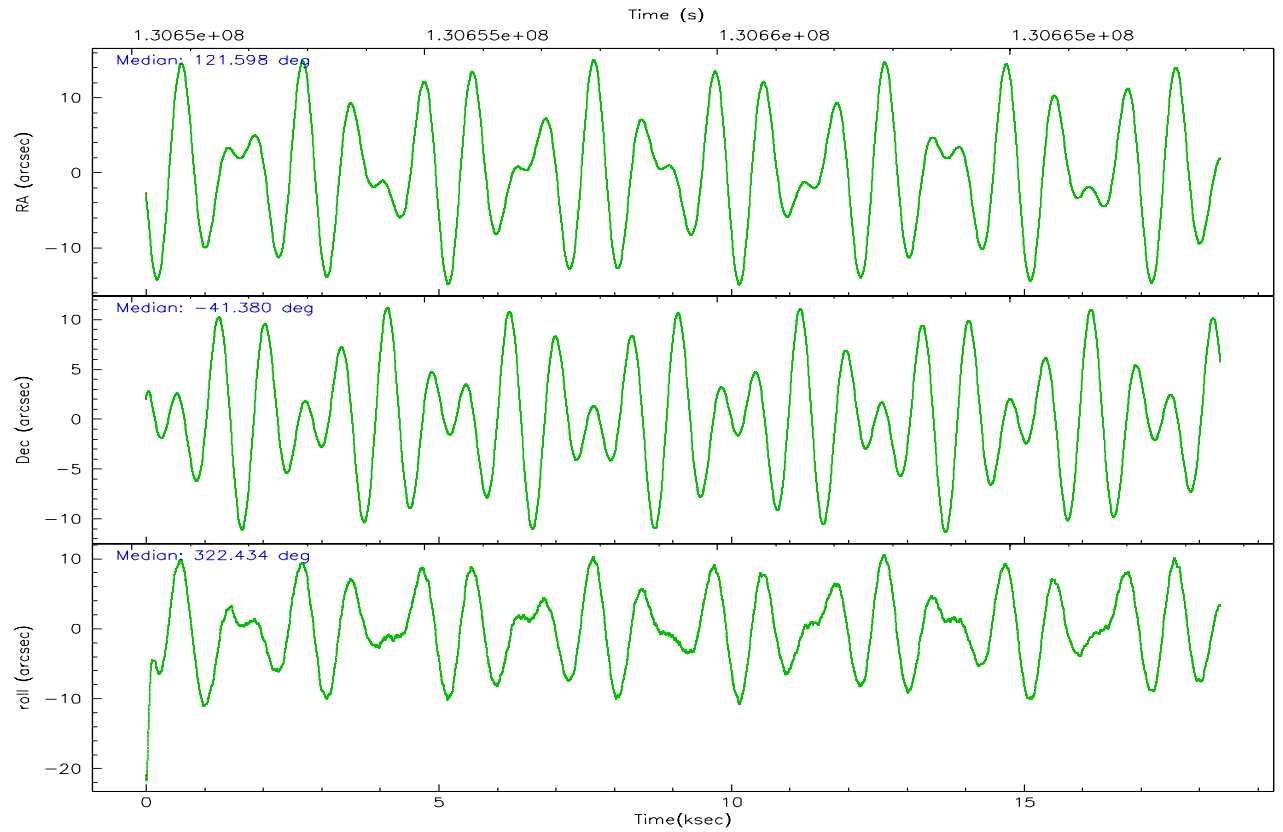
	ccd 0	ccd 1	ccd 2	ccd 3	ccd 6	ccd 7
grade 0 events	6484	6301	6353	7307	6071	4151
	5%	5%	5%	5%	4%	2%
grade 1 events	59	54	63	92	56	99
	0%	0%	0%	0%	0%	0%
grade 2 events	3485	3391	3326	3422	3366	15799
	3%	2%	2%	2%	2%	9%
grade 3 events	1429	1577	1257	1371	1395	3378
	1%	1%	1%	1%	1%	2%
grade 4 events	1325	1525	1343	1350	1454	3392
	1%	1%	1%	1%	1%	2%
grade 5 events	4476	4624	4169	4844	5310	10762
	4%	4%	3%	3%	4%	6%
grade 6 events	2700	3016	2614	2721	3108	37016
	2%	2%	2%	2%	2%	22%
grade 7 events	91591	93820	103223	103823	107329	87388
	82%	82%	84%	83%	83%	53%

2.2 Compared Parameters

Parameter	Planned	Actual	Parameter	Planned	Actual
Instrument	ACIS	ACIS	Obspar format version number	6	6
Detector	ACIS-012367	ACIS-012367	Obspar file type	PREDICTED	ACTUAL
Grating	NONE	NONE	Obspar update status	NONE	UPDATED
Data mode	FAINT	FAINT	On-chip summing requested	N	N
Observation mode	POINTING	POINTING	Subarray requested	NONE	NONE
Pointing RA	121.561847	121.5980345936905	Alternating exposures requested	N	N
Pointing Dec	-41.376371	-41.37989212958007	Primary exposure time	0.000000	3.2
Pointing Roll	322.205615	322.438209794377			
SIM focus pos (mm)	-0.782348	-0.7809083437167272			
SIM defocus (mm)	0	0.001439871863259334			
SIM translation stage pos (mm)	-233.592463	-233.5874344608287			
SIM translation stage offset (mm)	0	-0.005018542100998502			
Observation start time	130650425.184000	130649603.26486			
Observation start date	2002-02-21T03:46:01	2002-02-21T03:33:23			
Observation end time	130668589.184000	130668904.01564			
Observation end date	2002-02-21T08:48:45	2002-02-21T08:55:04			
Read mode	TIMED	TIMED			

2.3 Aspect



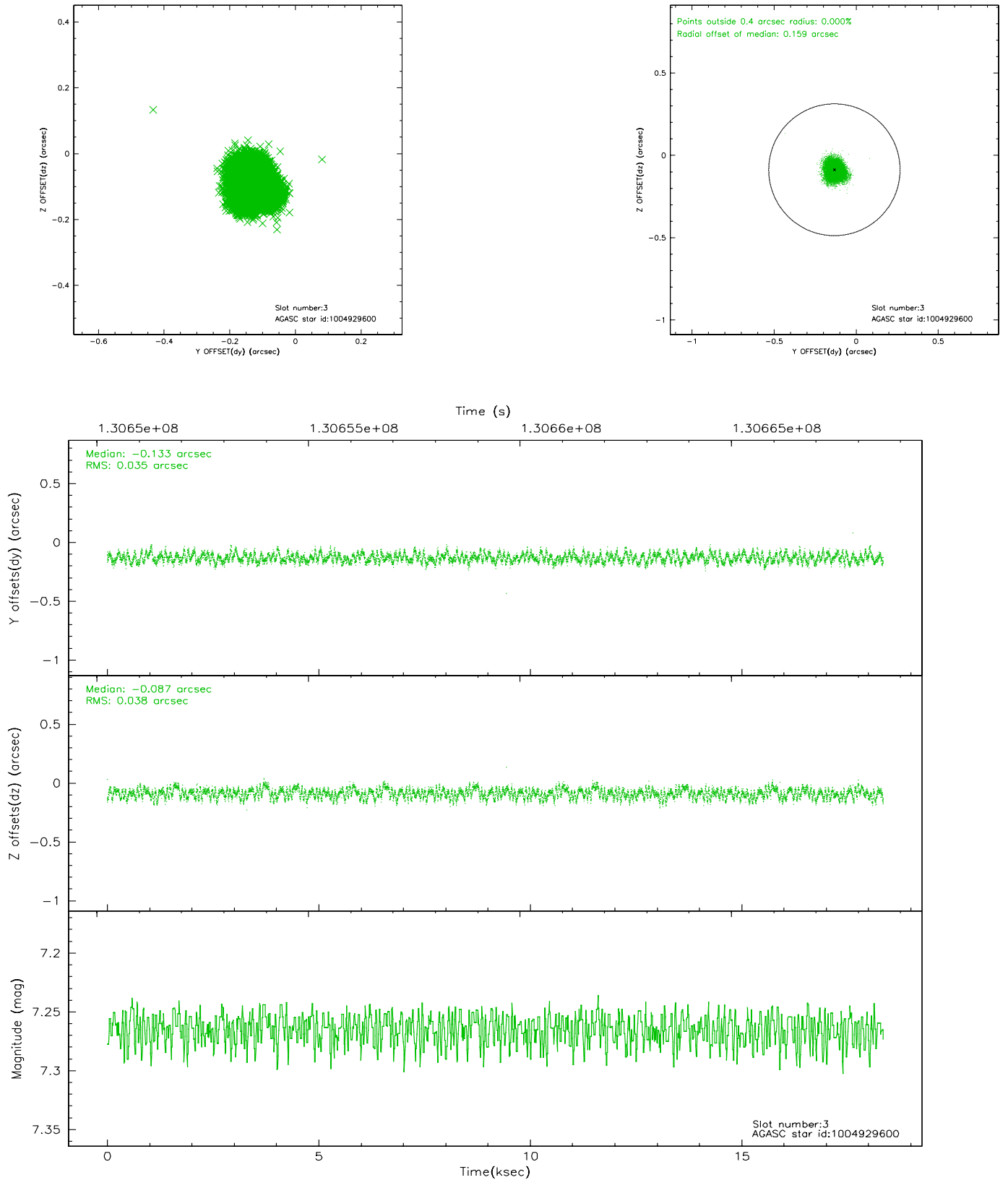


Slot Statistics

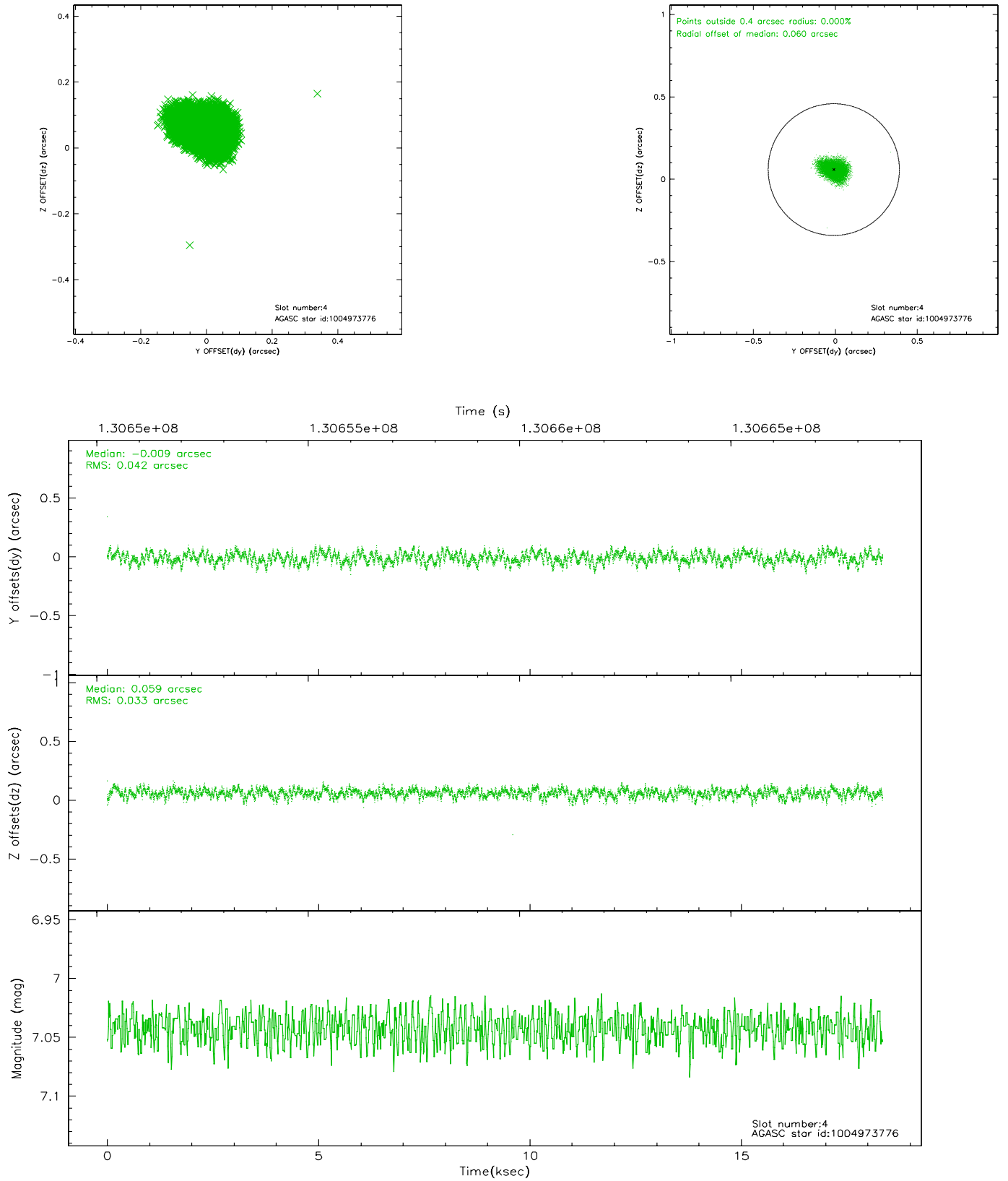
slot	status	id	mag	n_pts	med_dy	med_dz	dr1	dr2	ra	dec	mean_y	mean_z
0	FID	ACIS-I-1	7.25	4477	-0.030	0.040	0.007	0.011	0.000000	0.000000	937.50	-829.75
1	FID	ACIS-I-5	7.24	4476	-0.010	0.034	0.007	0.011	0.000000	0.000000	-1810.42	1067.68
2	FID	ACIS-I-6	7.26	4475	-0.051	-0.004	0.007	0.011	0.000000	0.000000	402.84	1712.34
3	GUIDE	1004929600	7.26	8952	-0.133	-0.087	0.057	0.087	122.465633	-41.276185	1718.75	1773.21
4	GUIDE	1004973776	7.04	8953	-0.009	0.059	0.058	0.093	121.821280	-41.735378	1343.61	-594.95
5	GUIDE	1004956944	8.31	8951	0.025	0.101	0.069	0.106	120.897818	-41.757031	-564.87	-2181.43
6	GUIDE	1004407752	8.34	8891	0.025	-0.026	0.071	0.111	122.148112	-41.238636	953.32	1359.78
7	GUIDE	1004424976	9.64	8946	0.093	-0.046	0.139	0.229	121.434544	-40.582502	-2026.36	2044.62

2.4 Star Slots

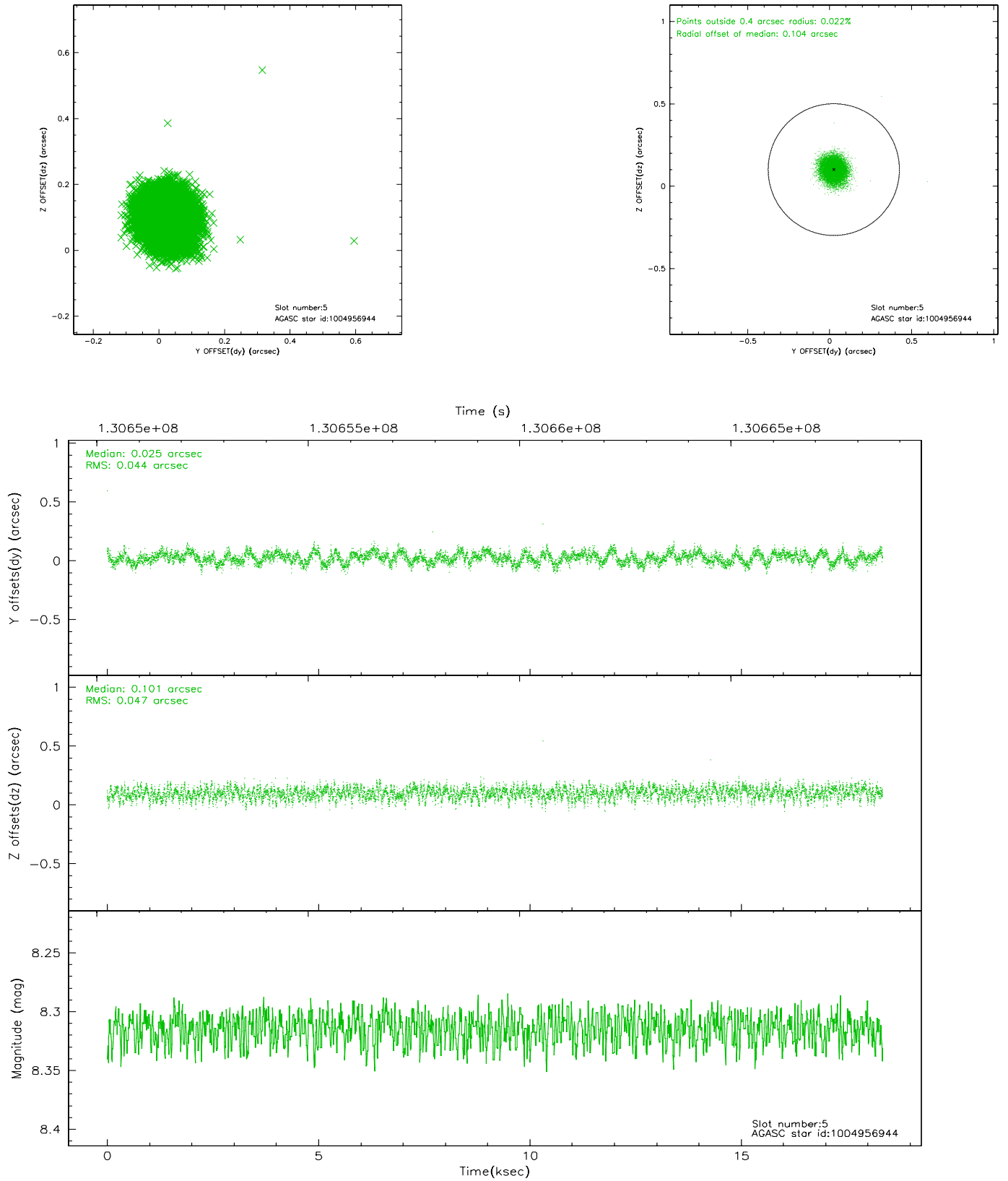
2.4.1 Slot 3



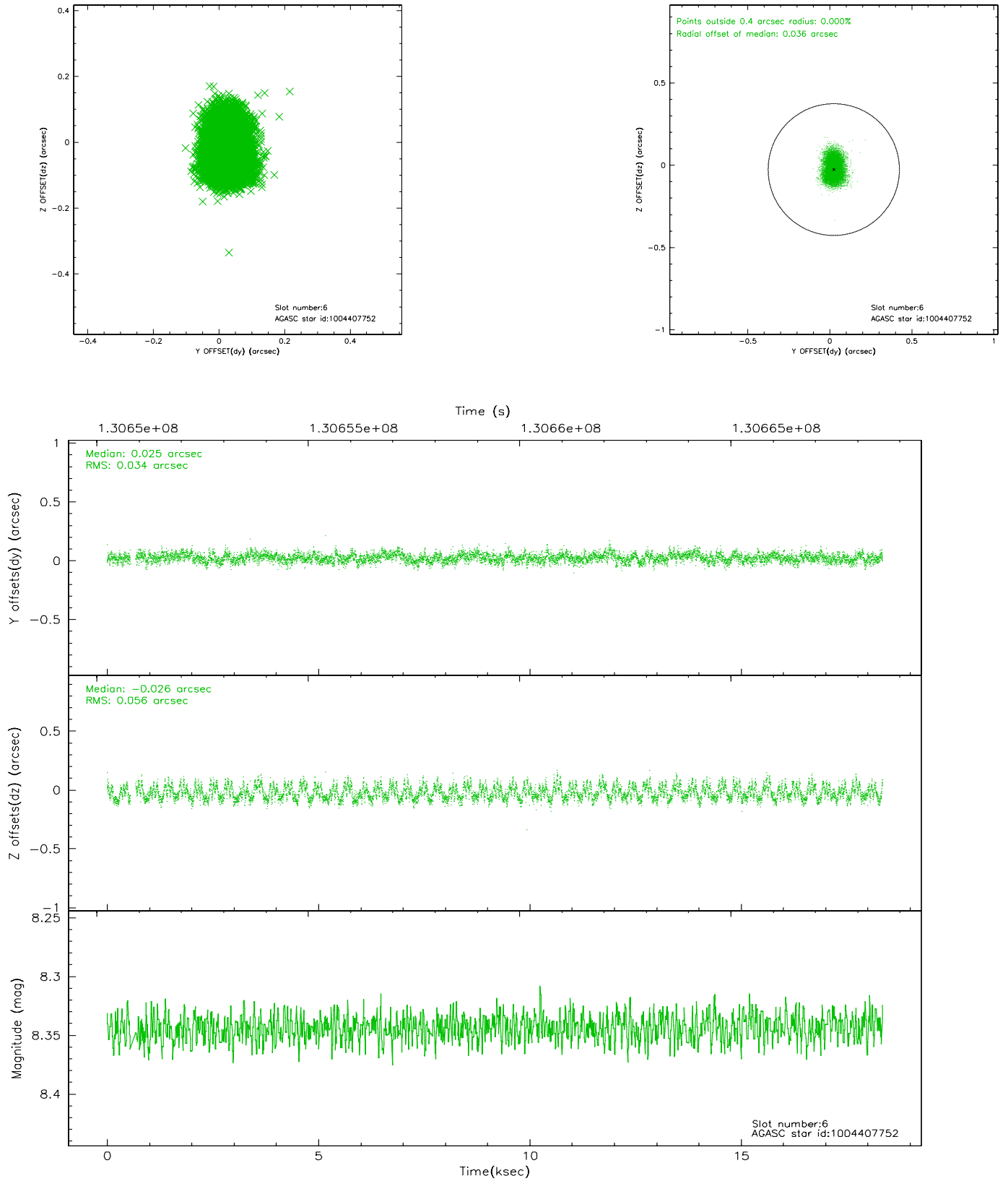
2.4.2 Slot 4



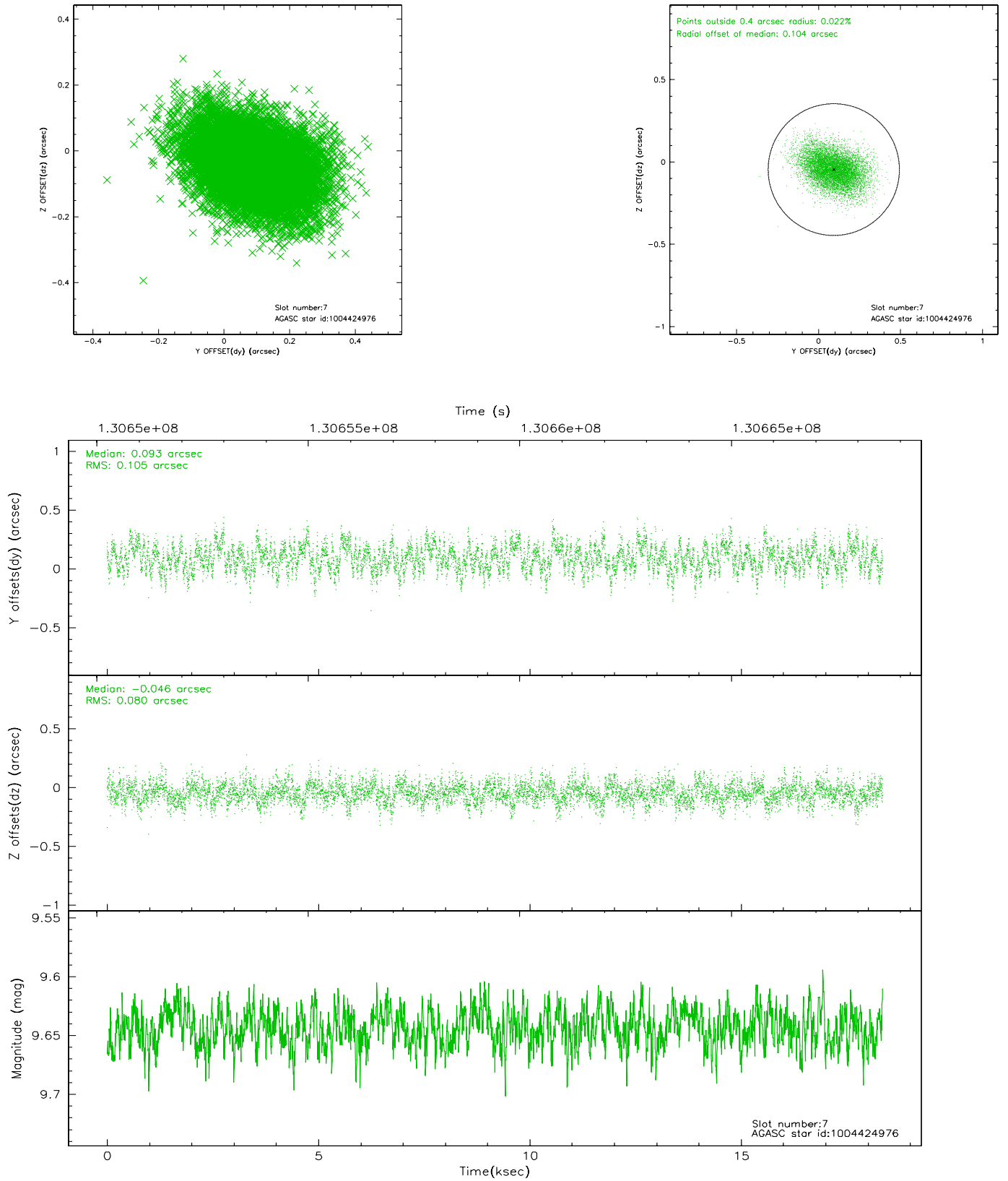
2.4.3 Slot 5



2.4.4 Slot 6

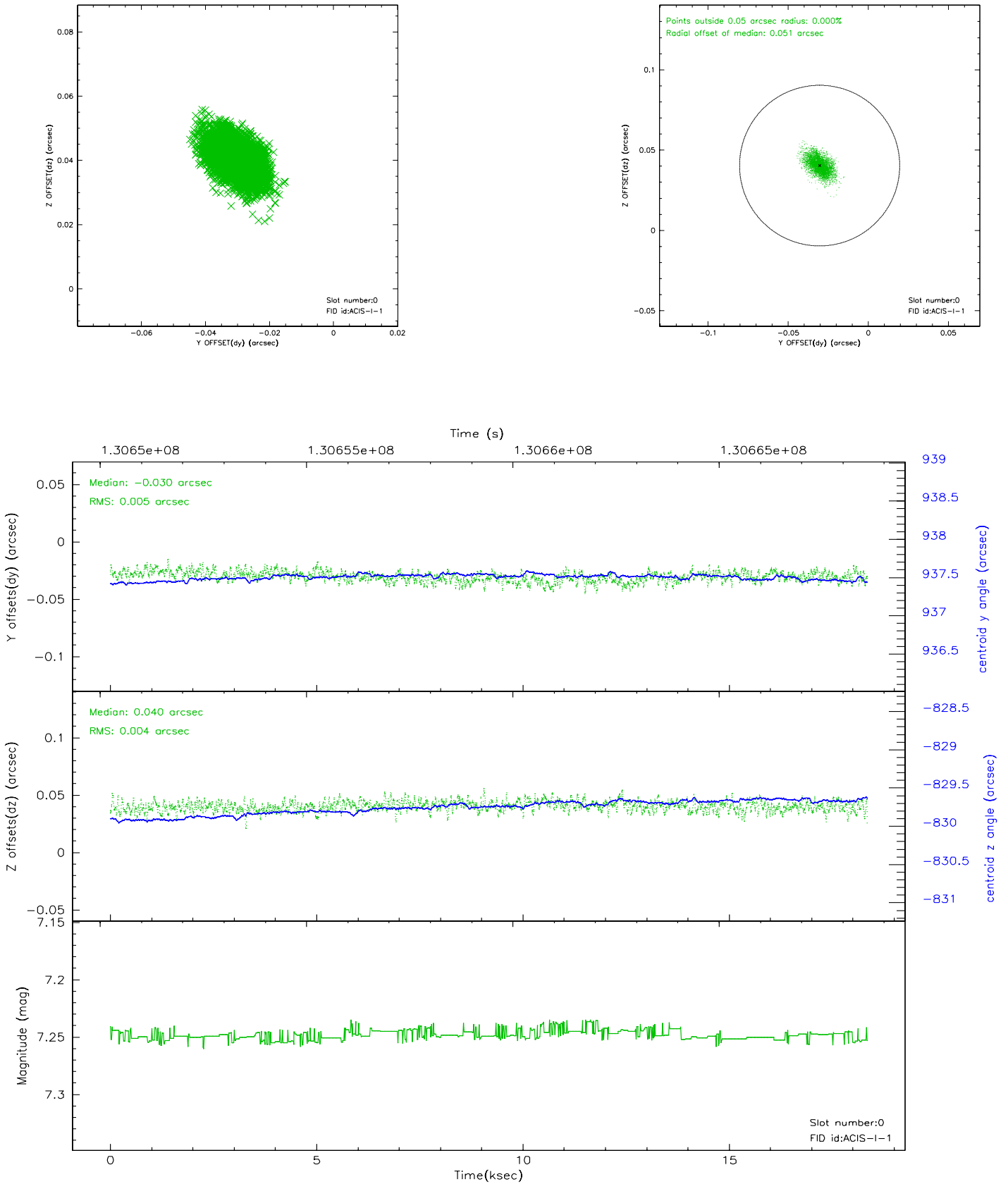


2.4.5 Slot 7

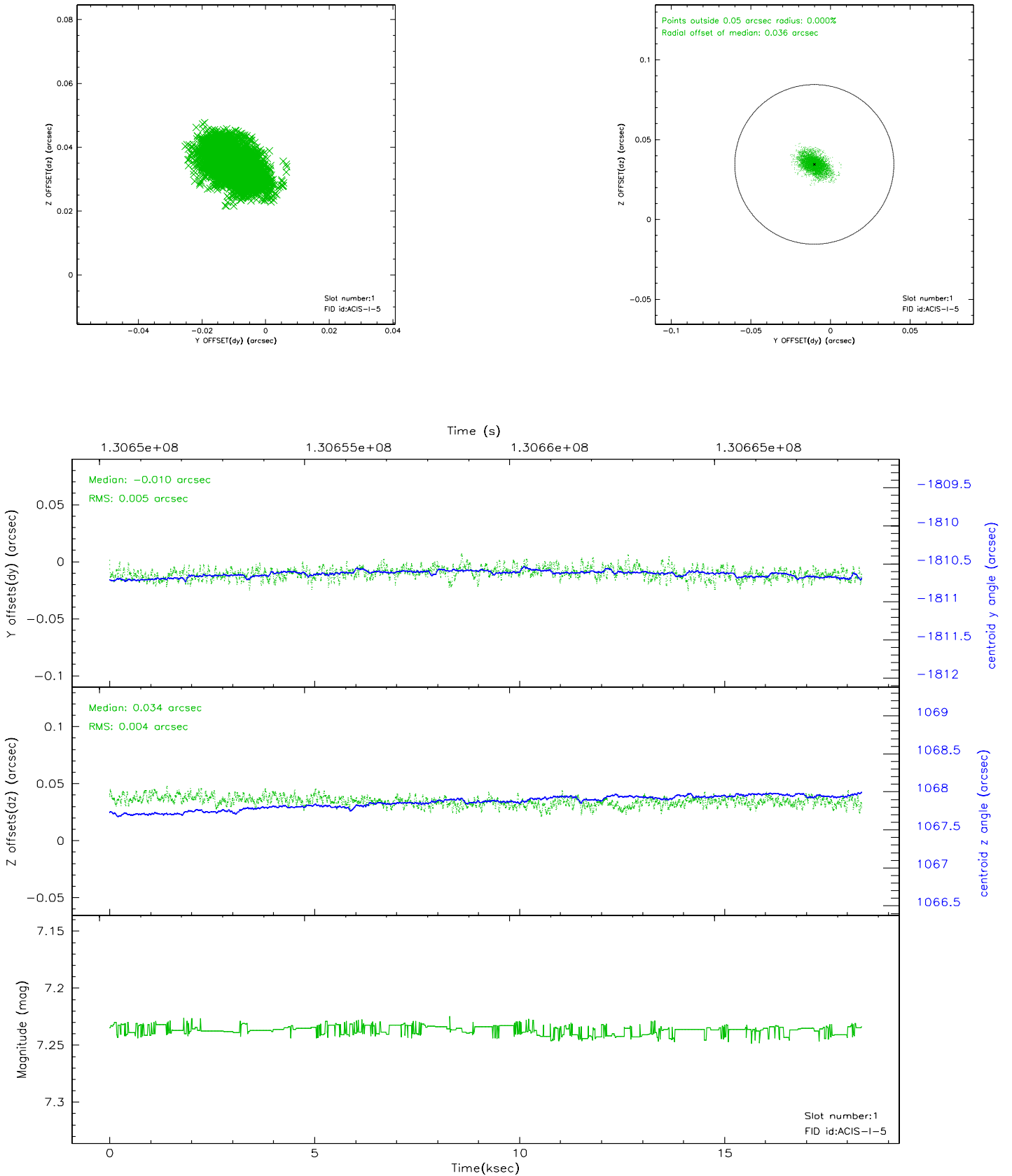


2.5 FID Slots

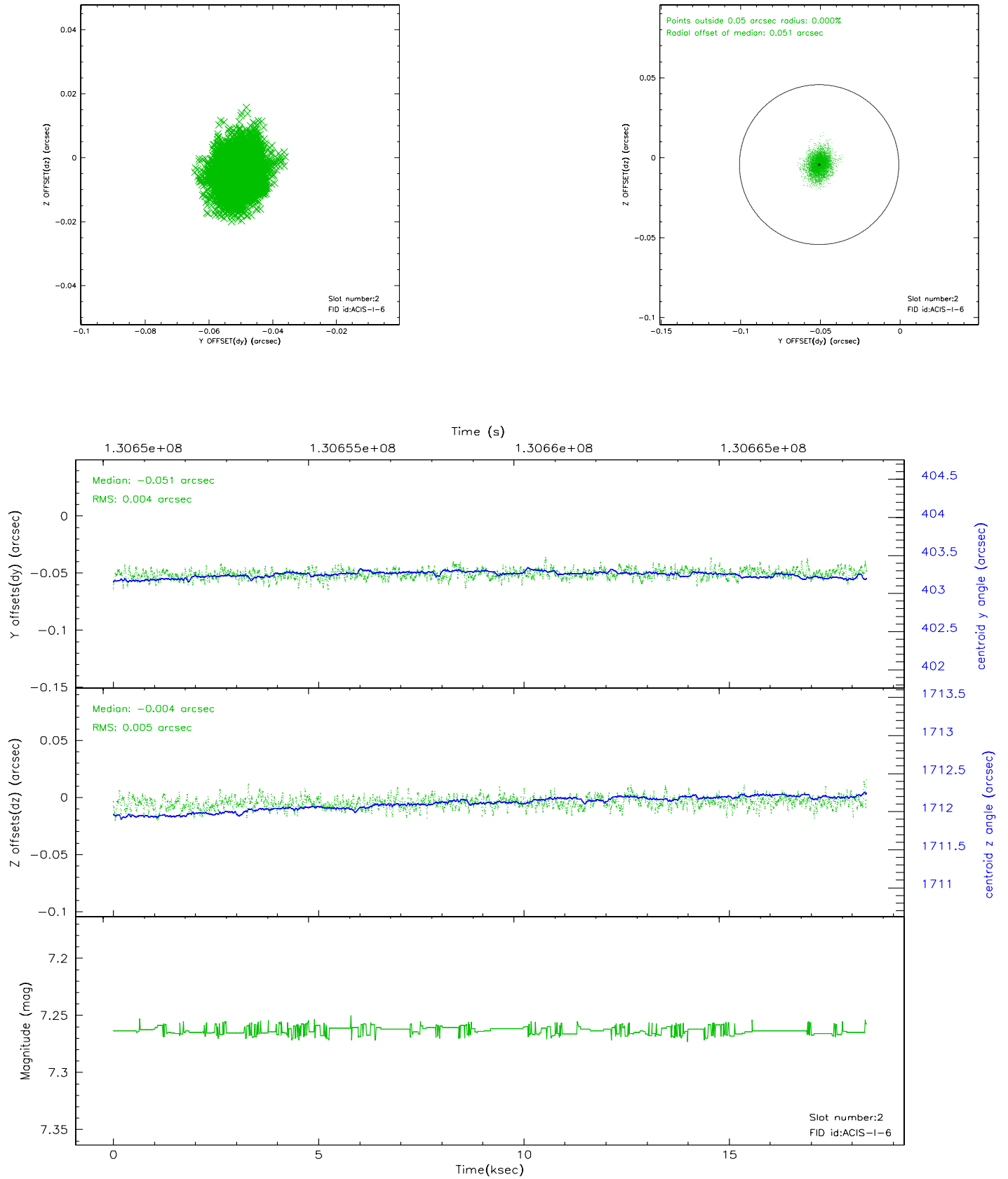
2.5.1 Slot 0



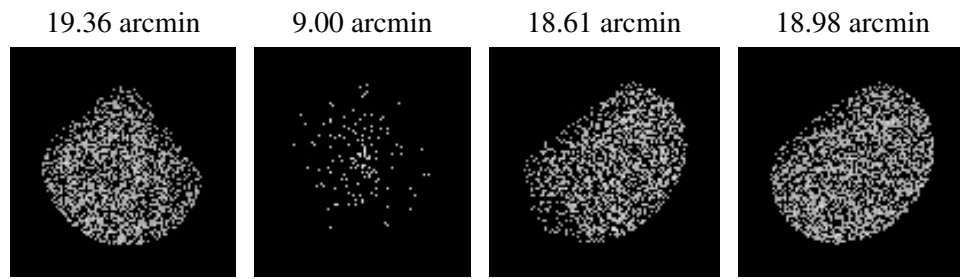
2.5.2 Slot 1



2.5.3 Slot 2



3 Point Sources



A Summary

A.1 Status

V&V Scientist	Jen Lauer
V&V Date (YYYY-MM-DD)	2006.09.05
V&V Edition	1
V&V Disposition and Status	OK
V&V Charge Time	17.913

A.2 Comments