

# V&V Reference Report

## L2 ASCDS Version : 7.6.9

Observation 2549 - L2 Version 001  
Chandra X-Ray Center

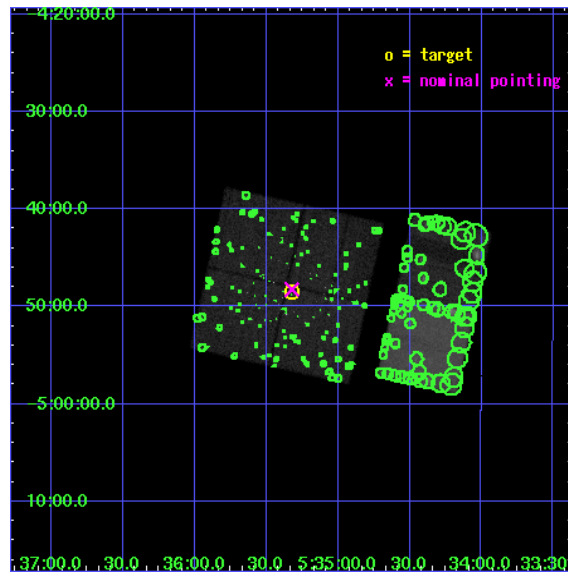
L2 Processing Date : Sep 28 2006

## Contents

<b>1</b>	<b>Front</b>	<b>2</b>
<b>2</b>	<b>OBI</b>	<b>3</b>
2.1	OBI . . . . .	3
2.1.1	Images . . . . .	3
2.1.2	Bias . . . . .	3
2.1.3	Parameters . . . . .	4
2.1.4	Events . . . . .	4
2.2	Compared Parameters . . . . .	5
2.3	Aspect . . . . .	6
2.4	Star Slots . . . . .	9
2.4.1	Slot 3 . . . . .	9
2.4.2	Slot 4 . . . . .	10
2.4.3	Slot 5 . . . . .	11
2.4.4	Slot 6 . . . . .	12
2.4.5	Slot 7 . . . . .	13
2.5	FID Slots . . . . .	14
2.5.1	Slot 0 . . . . .	14
2.5.2	Slot 1 . . . . .	15
2.5.3	Slot 2 . . . . .	16
<b>3</b>	<b>Point Sources</b>	<b>17</b>
<b>A</b>	<b>Summary</b>	<b>18</b>
A.1	Status . . . . .	18
A.2	Comments . . . . .	18

# 1 Front

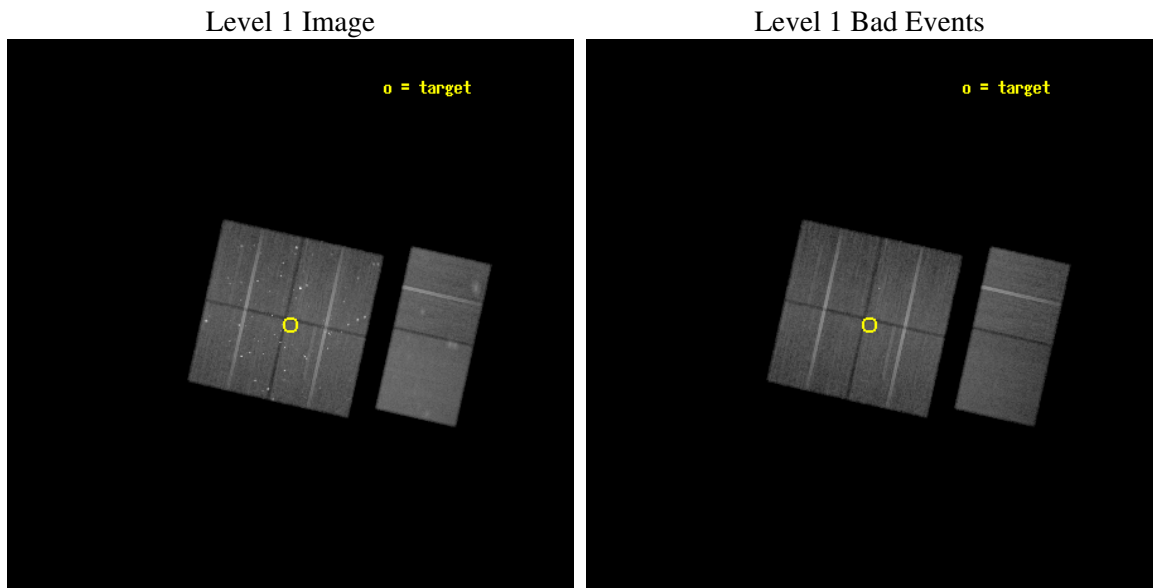
seq_num	200157
obs_id	2549
title	THE AGE-ROTATION-ACTIVITY RELATION IN LATE-TYPE STARS BETWEEN ~1-10 MYR
observer	Dr. John Stauffer
object	ONC FLANKING FIELD N
dtcycle	0
cycle	P
ra_targ	83.829583
dec_targ	-4.808722
ra_nom	83.830429666131
dec_nom	-4.8041271166158
roll_nom	102.64849793676
revision	2
ontime	49430.399815857
livetime	48804.482329976
ontime0	49430.399815857
ontime1	49430.399815857
ontime2	49420.676955014
ontime3	49430.399815857
ontime6	49430.399815857
ontime7	49430.399815857
l2events	472951



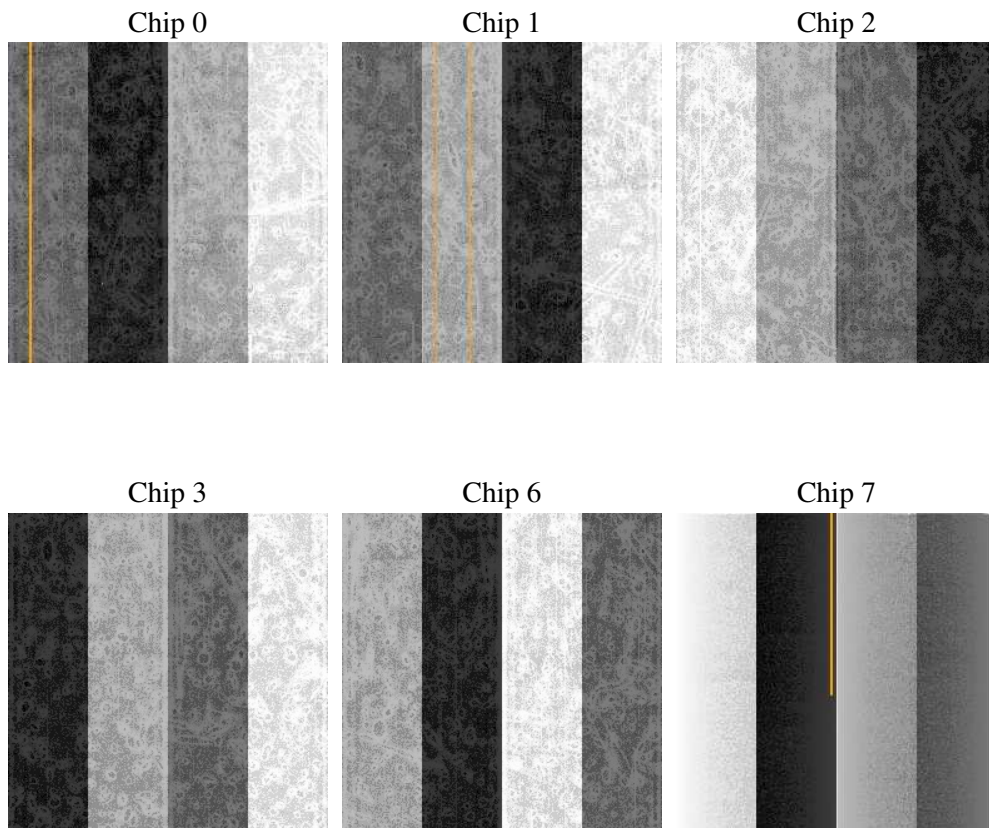
## 2 OBI

### 2.1 OBI

#### 2.1.1 Images



#### 2.1.2 Bias



### 2.1.3 Parameters

obi_num	1
ascdsver	7.6.9
caldsver	3.2.3
date	2006-09-28T21:31:58
revision	2

sched_exp_time	49300.000000
ontime	49548.405973911
ontime0	49548.405973911
ontime1	49548.405973911
ontime2	49538.683113068
ontime3	49548.405973911
ontime6	49548.405973911
ontime7	49548.405973911
l1events	2115993

### 2.1.4 Events

	ccd 0	ccd 1	ccd 2	ccd 3	ccd 6	ccd 7
level 1 events	308910	322836	356865	345443	357911	424028
rejected events	244916	252366	283014	279152	295846	244007
rejected %	79%	78%	79%	80%	82%	57%

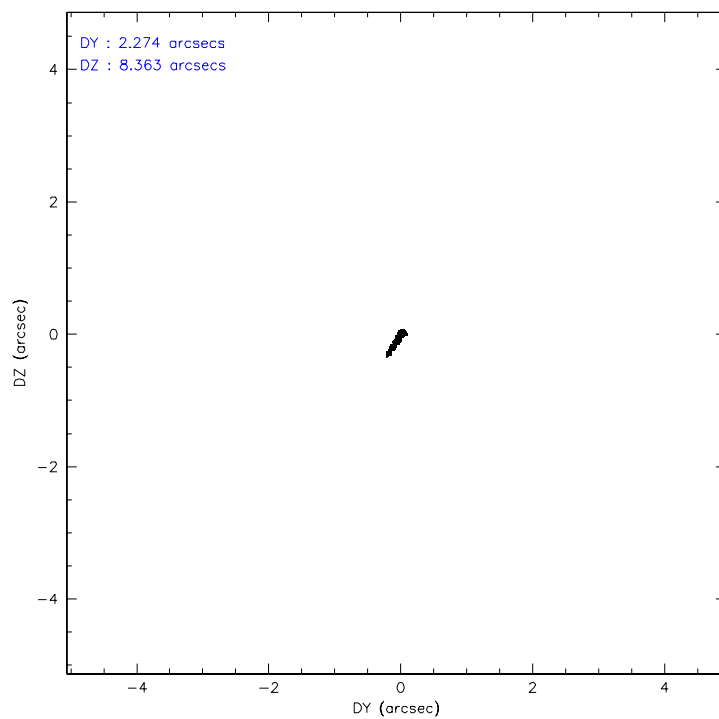
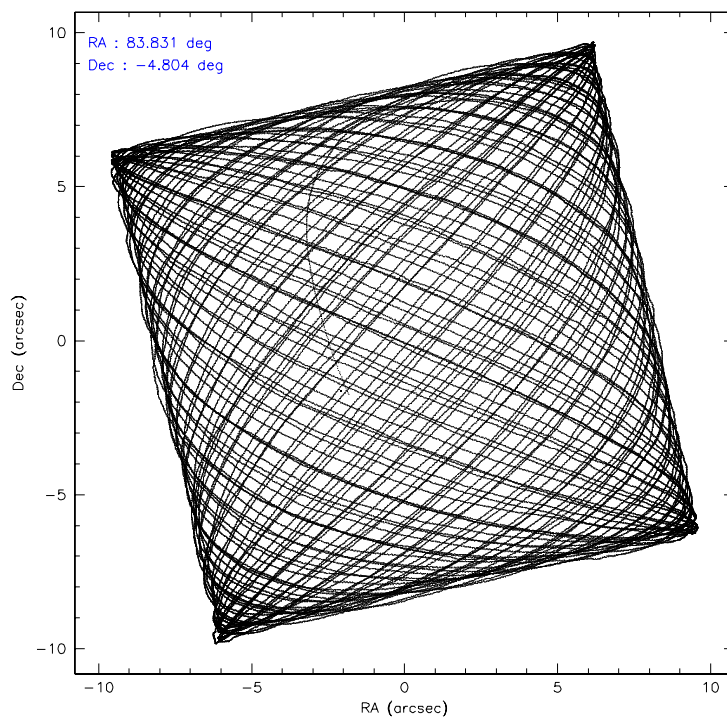
	ccd 0	ccd 1	ccd 2	ccd 3	ccd 6	ccd 7
grade 0 events	33026	36131	42965	35651	29868	14009
	10%	11%	12%	10%	8%	3%
grade 1 events	237	244	682	306	212	296
	0%	0%	0%	0%	0%	0%
grade 2 events	13987	15830	13241	13290	14566	44656
	4%	4%	3%	3%	4%	10%
grade 3 events	4034	4402	4214	4052	4003	9966
	1%	1%	1%	1%	1%	2%
grade 4 events	3944	4335	4575	4274	4072	9929
	1%	1%	1%	1%	1%	2%
grade 5 events	11479	11807	11497	12819	13431	26220
	3%	3%	3%	3%	3%	6%
grade 6 events	9181	9972	9063	9219	9730	101904
	2%	3%	2%	2%	2%	24%
grade 7 events	233022	240115	270628	265832	282029	217048
	75%	74%	75%	76%	78%	51%

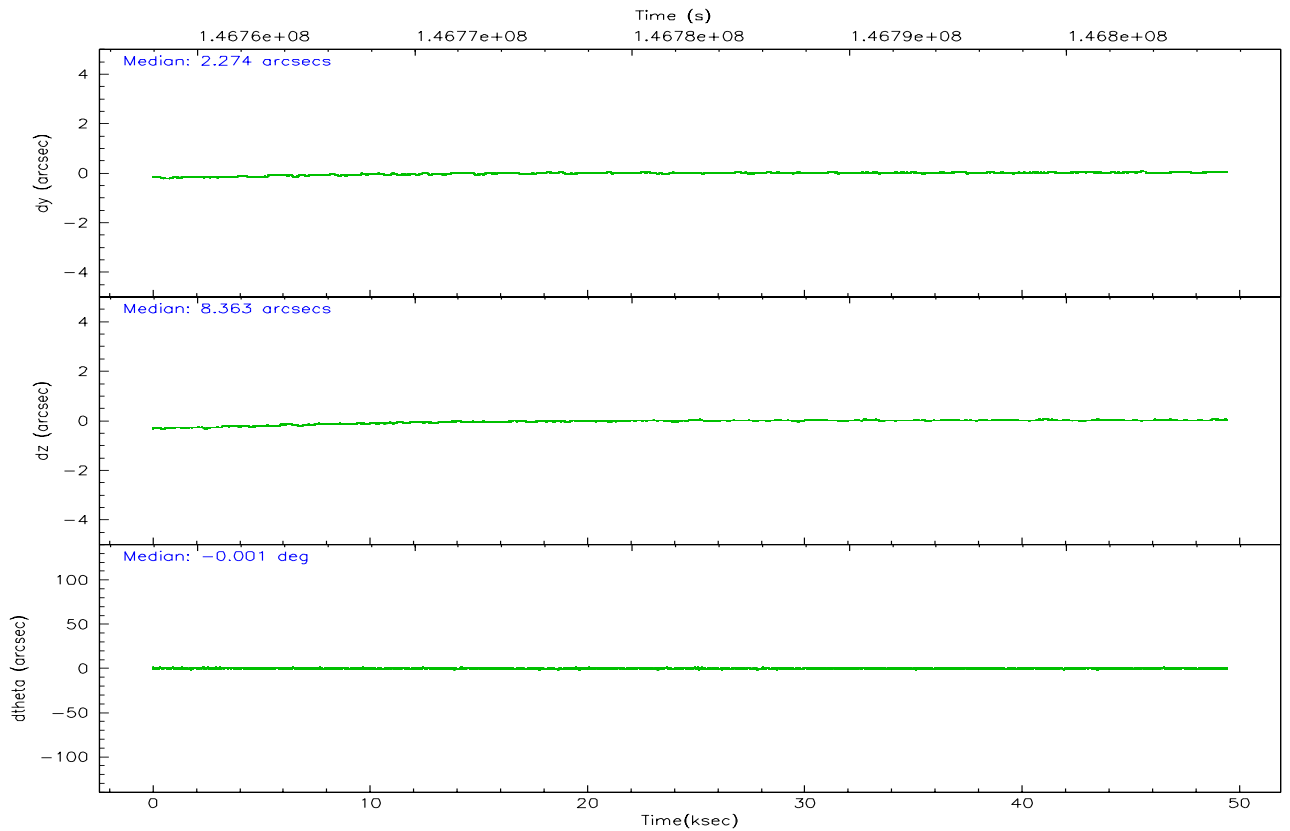
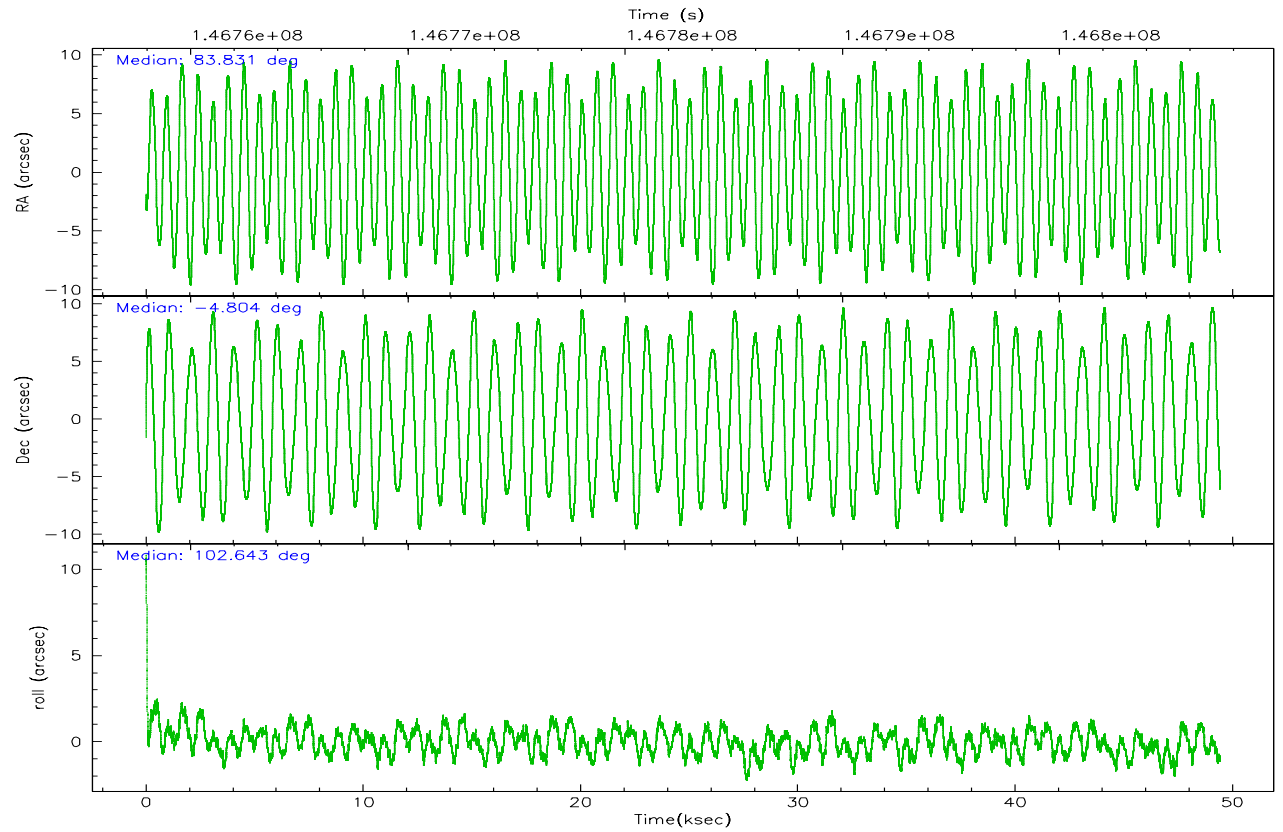


## 2.2 Compared Parameters

Parameter	Planned	Actual	Parameter	Planned	Actual
Instrument	ACIS	ACIS	Obspar format version number	6	6
Detector	ACIS-012367	ACIS-012367	Obspar file type	PREDICTED	ACTUAL
Grating	NONE	NONE	Obspar update status	NONE	UPDATED
Data mode	FAINT	FAINT	Number of optional ACIS chips dropped	0	0
Observation mode	POINTING	POINTING	On-chip summing requested	N	N
Pointing RA	83.849110	83.83042966613077	Subarray requested	NONE	NONE
Pointing Dec	-4.824221	-4.804127116615796	Alternating exposures requested	N	N
Pointing Roll	102.441379	102.6484979367581	Primary exposure time	0.000000	3.2
SIM focus pos (mm)	-0.782348	-0.7809083437167272			
SIM defocus (mm)	0	0.001439871863259334			
SIM translation stage pos (mm)	-233.592463	-233.5874344608287			
SIM translation stage offset (mm)	0	-0.005018542100998502			
Observation start time	146758094.184000	146756992.04752			
Observation start date	2002-08-26T14:07:10	2002-08-26T13:49:52			
Observation end time	146807394.184000	146808263.57464			
Observation end date	2002-08-27T03:48:50	2002-08-27T04:04:23			
Read mode	TIMED	TIMED			

## 2.3 Aspect



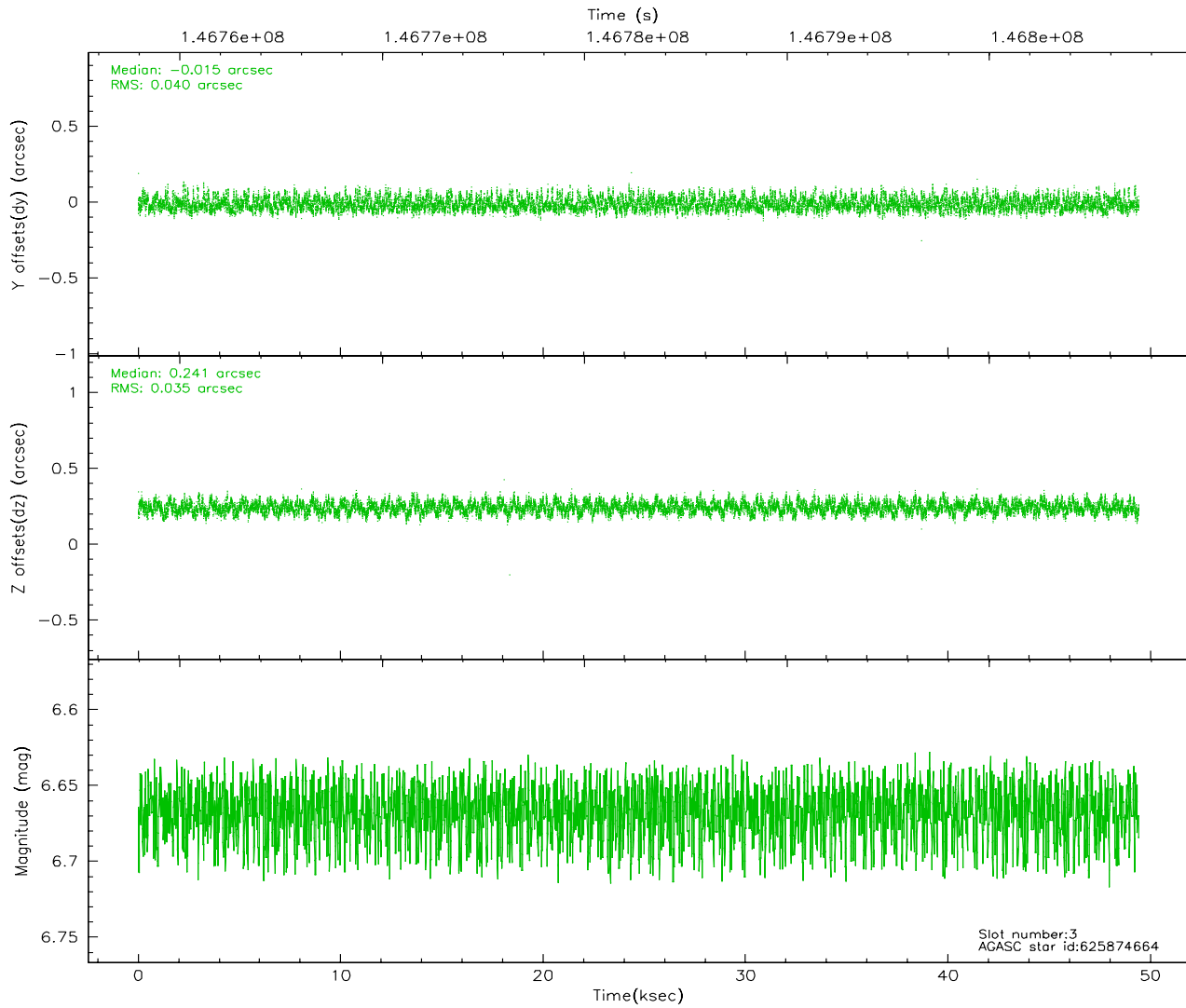
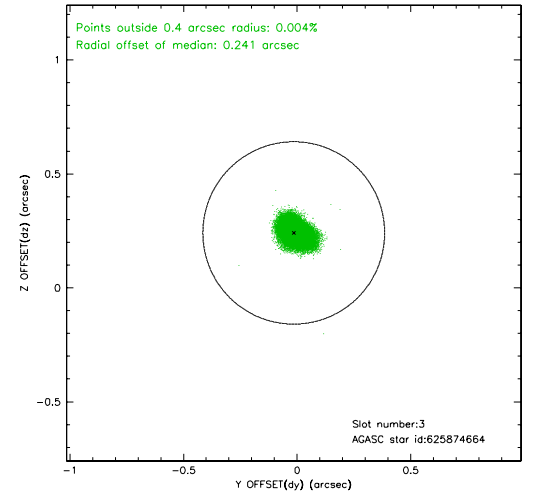
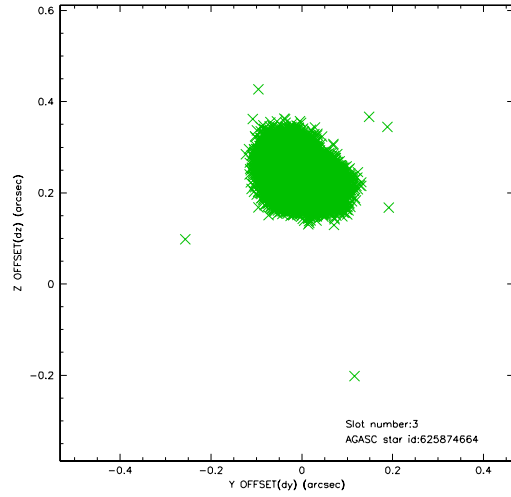


### Slot Statistics

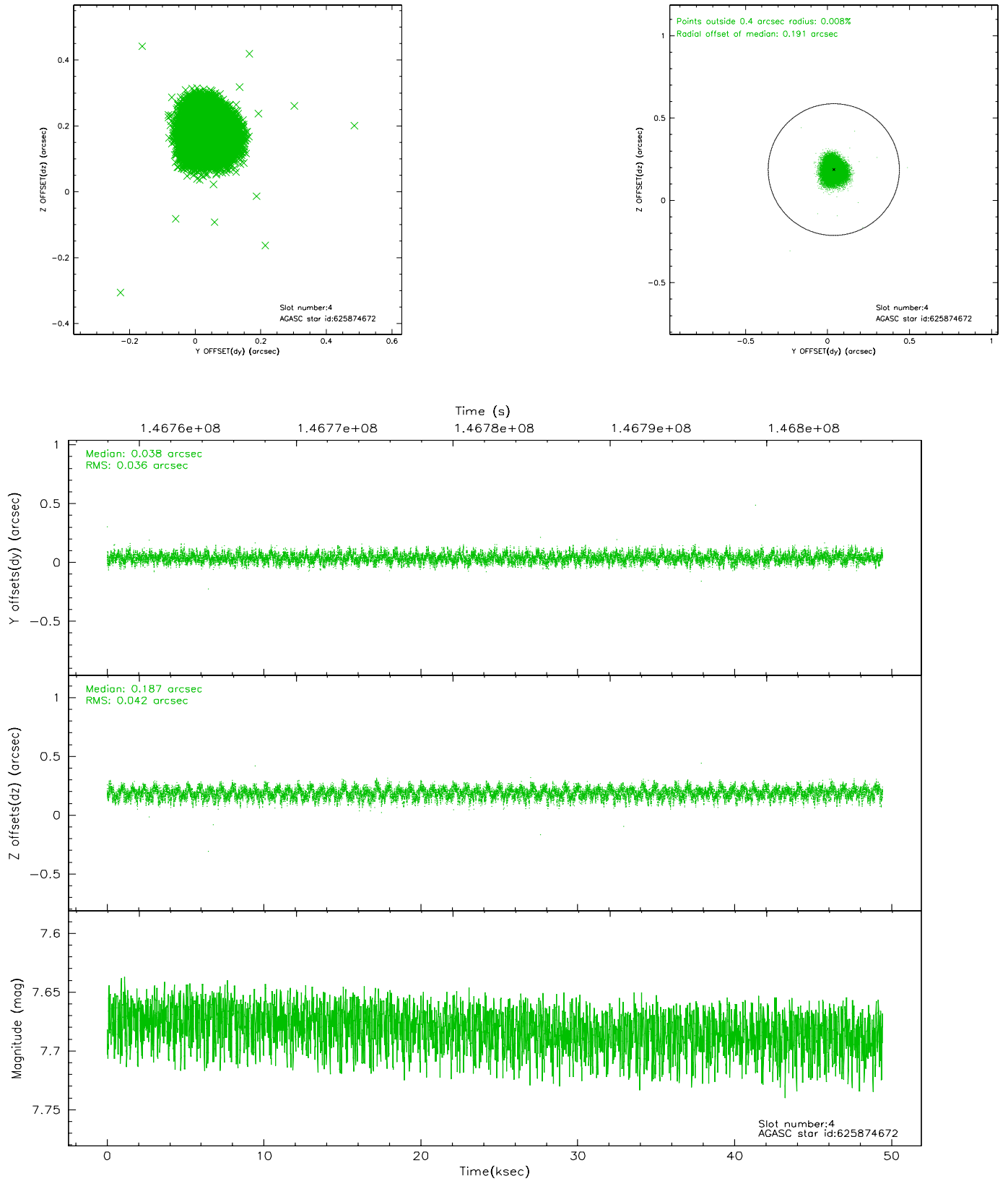
slot	status	id	mag	n_pts	med_dy	med_dz	dr1	dr2	ra	dec	mean_y	mean_z
0	FID	ACIS-I-1	7.24	12058	-0.051	-0.001	0.007	0.011	0.000000	0.000000	937.49	-831.77
1	FID	ACIS-I-3	7.45	12057	0.023	0.224	0.007	0.011	0.000000	0.000000	55.05	-964.83
2	FID	ACIS-I-6	7.26	12056	-0.061	-0.156	0.005	0.010	0.000000	0.000000	403.25	1709.90
3	GUIDE	625874664	6.67	24117	-0.015	0.241	0.057	0.091	84.472438	-4.814037	-446.62	-2190.39
4	GUIDE	625874672	7.68	24114	0.038	0.187	0.059	0.094	84.403143	-4.934124	-814.96	-1854.40
5	GUIDE	625745120	8.05	24110	-0.137	-0.120	0.059	0.090	83.237850	-4.566478	1377.51	1942.97
6	GUIDE	625739824	8.57	24111	-0.112	-0.013	0.059	0.095	83.062265	-4.320705	2377.02	2369.18
7	GUIDE	625741512	9.06	24104	0.241	-0.295	0.134	0.222	83.281151	-5.340585	-1377.40	2389.02

## 2.4 Star Slots

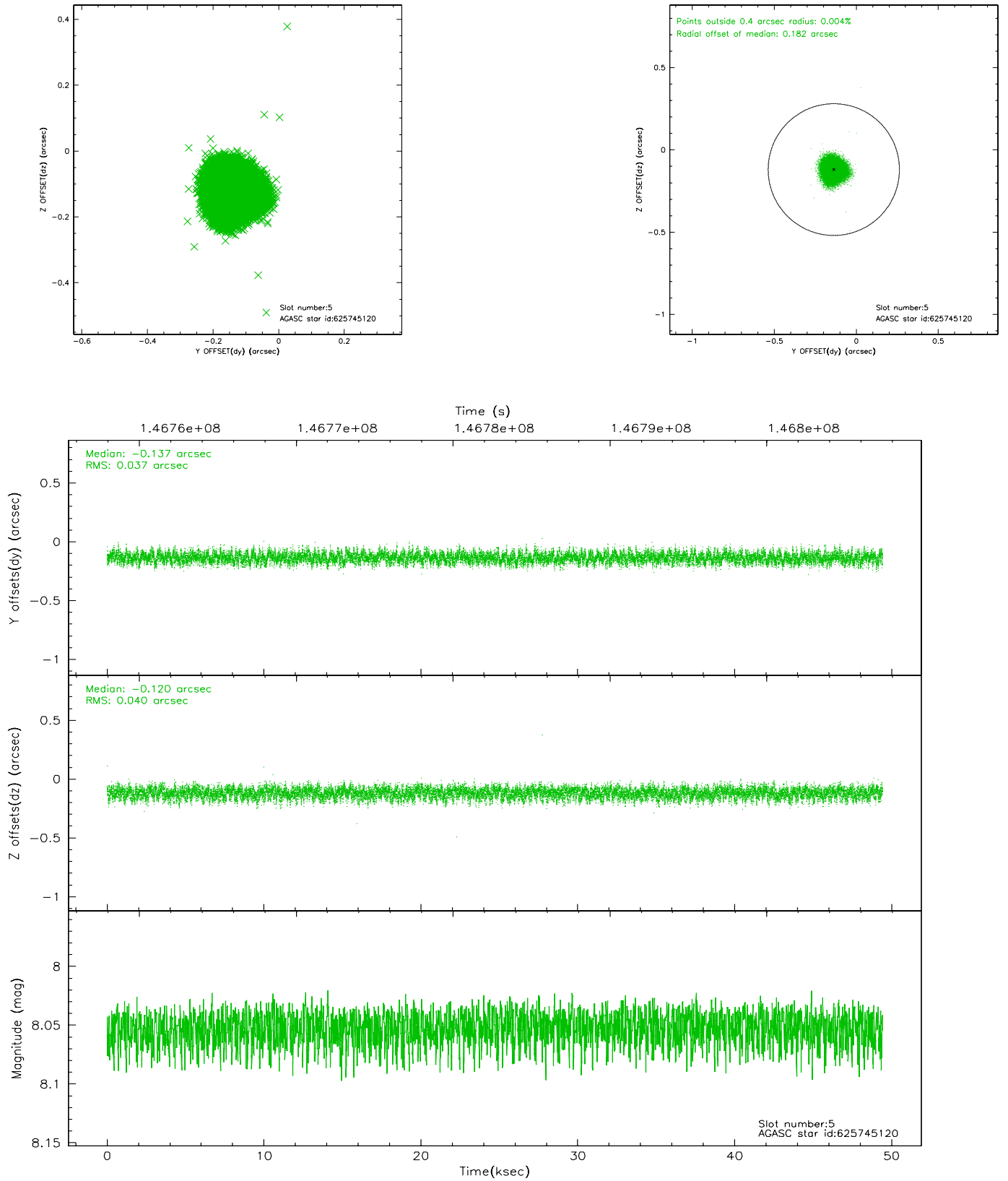
### 2.4.1 Slot 3



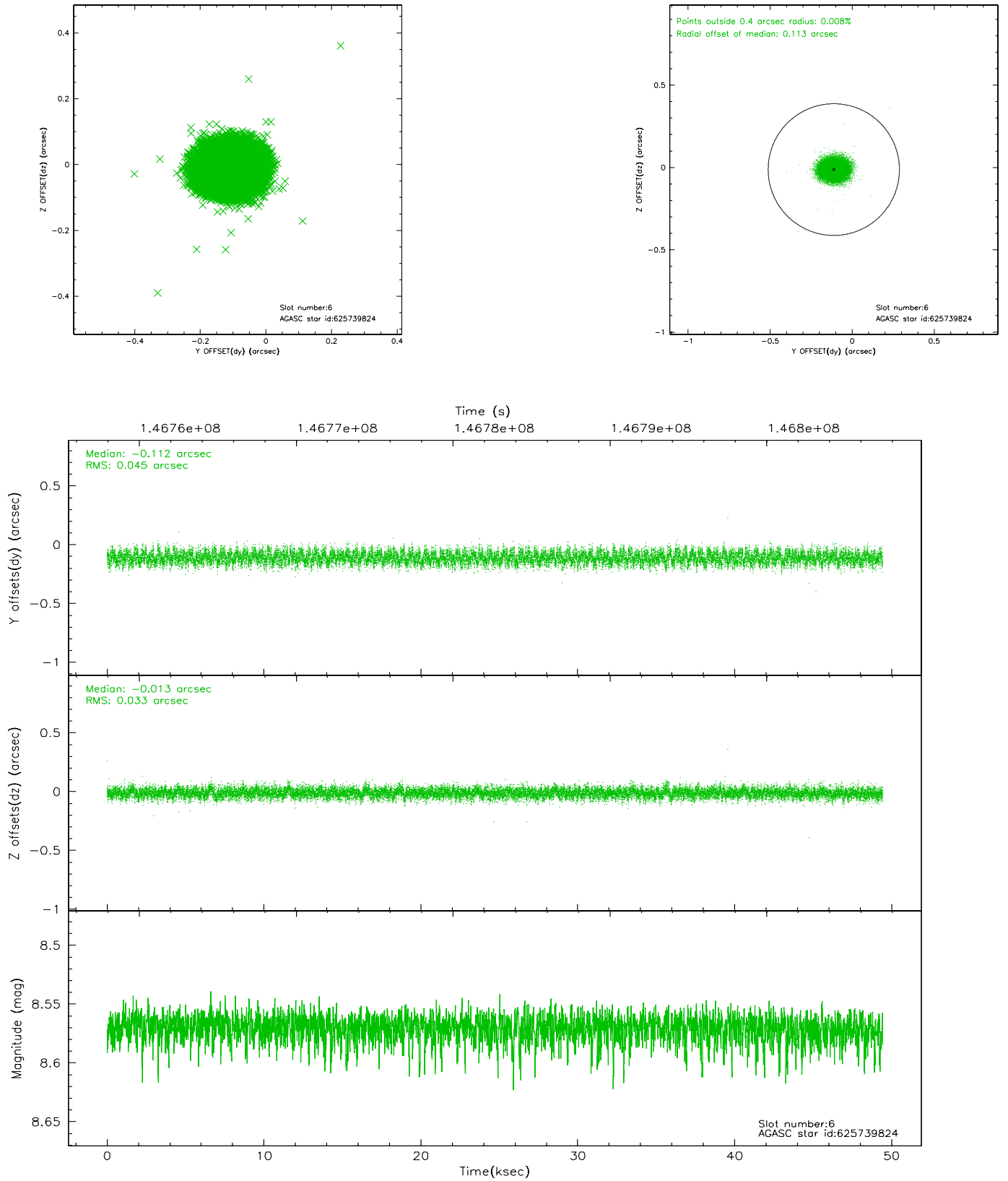
## 2.4.2 Slot 4



### 2.4.3 Slot 5

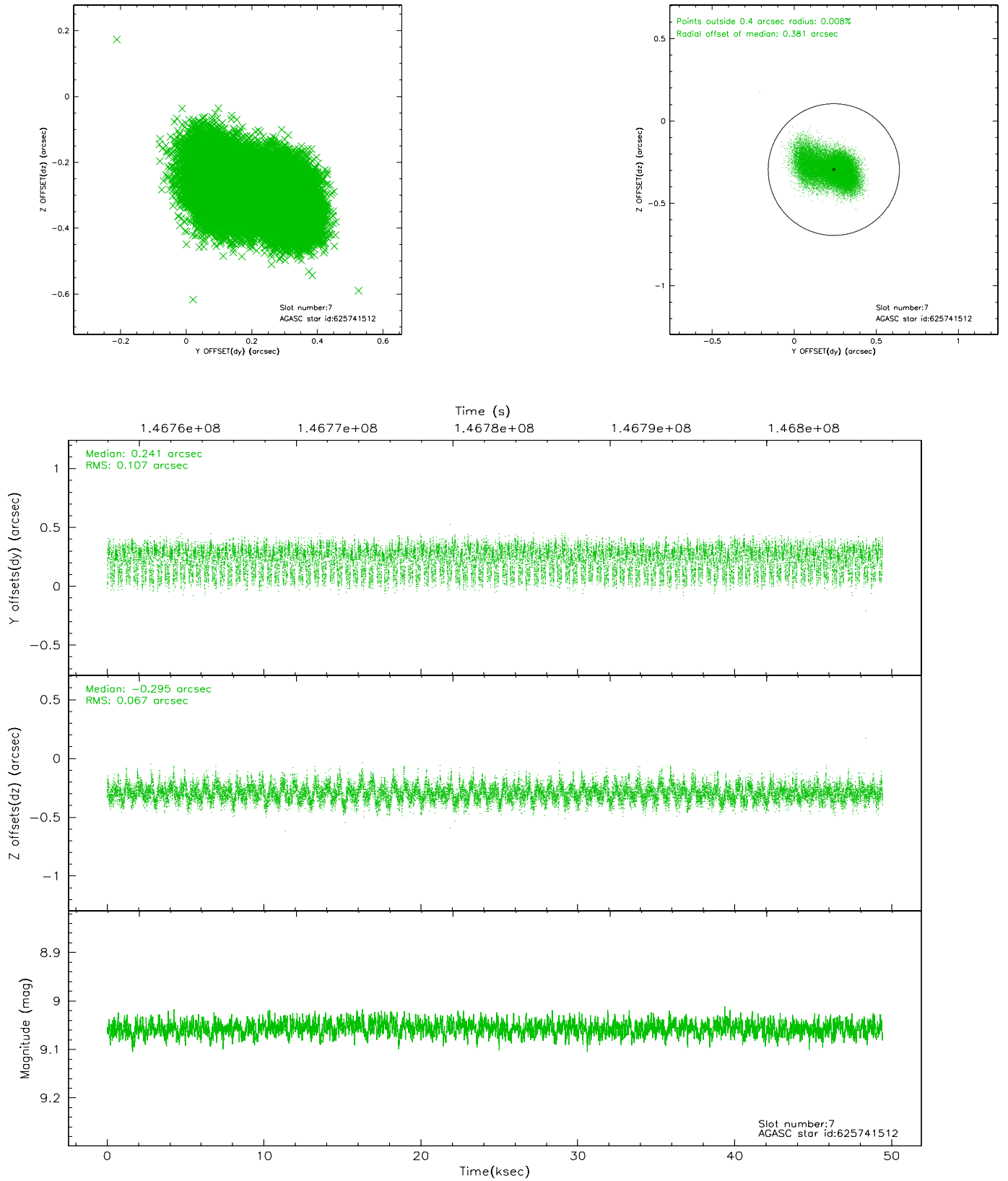


## 2.4.4 Slot 6



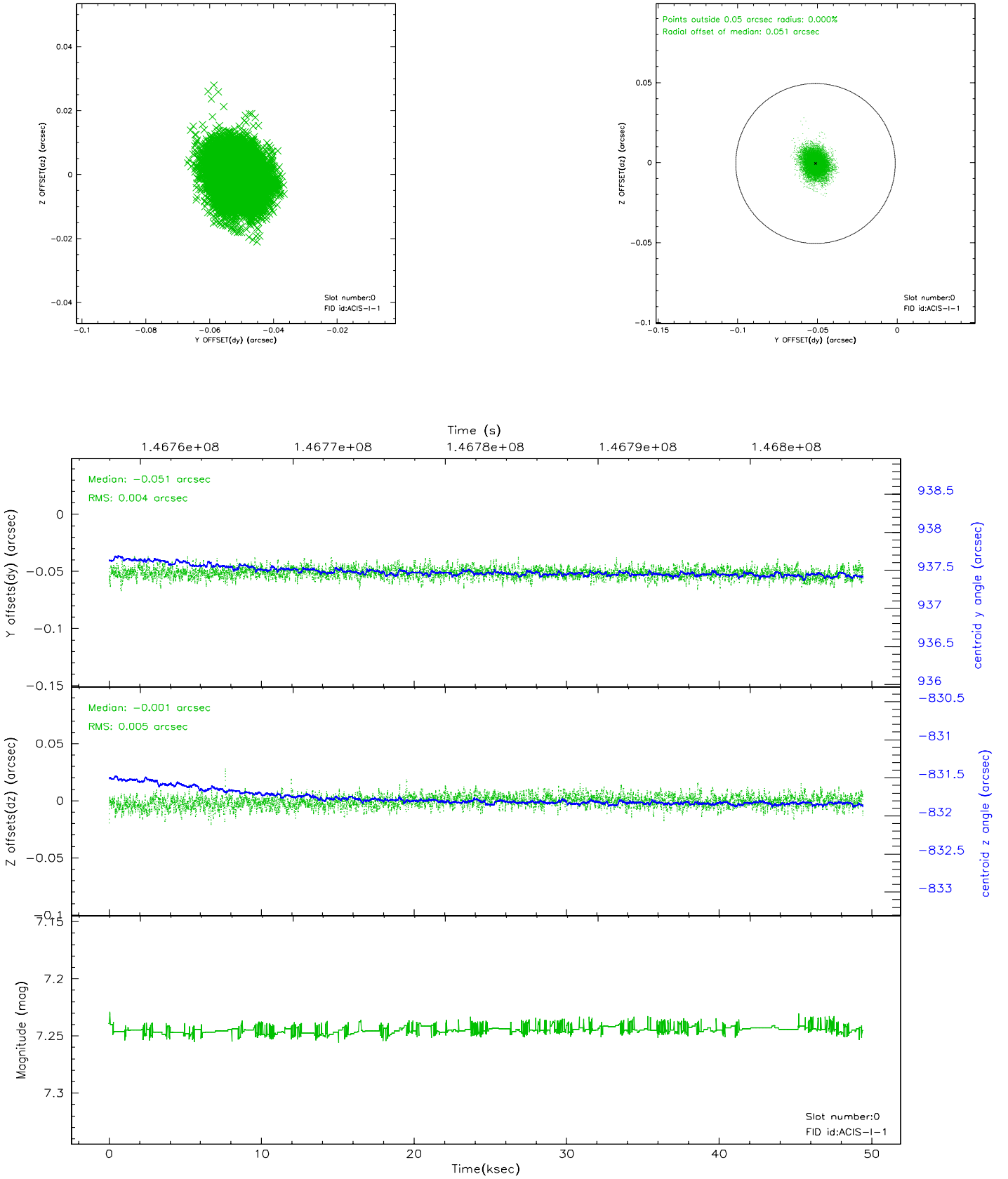


## 2.4.5 Slot 7

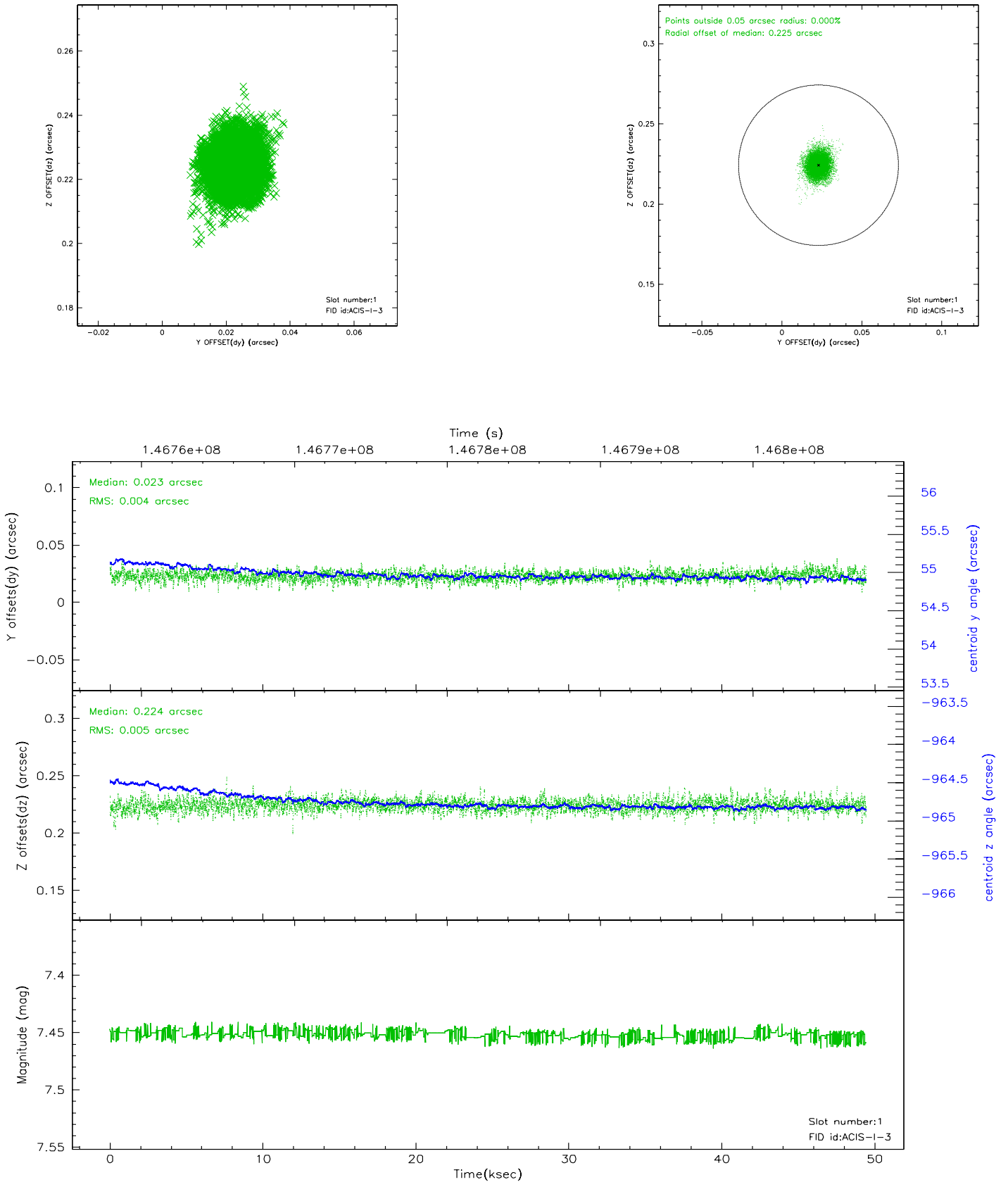


## 2.5 FID Slots

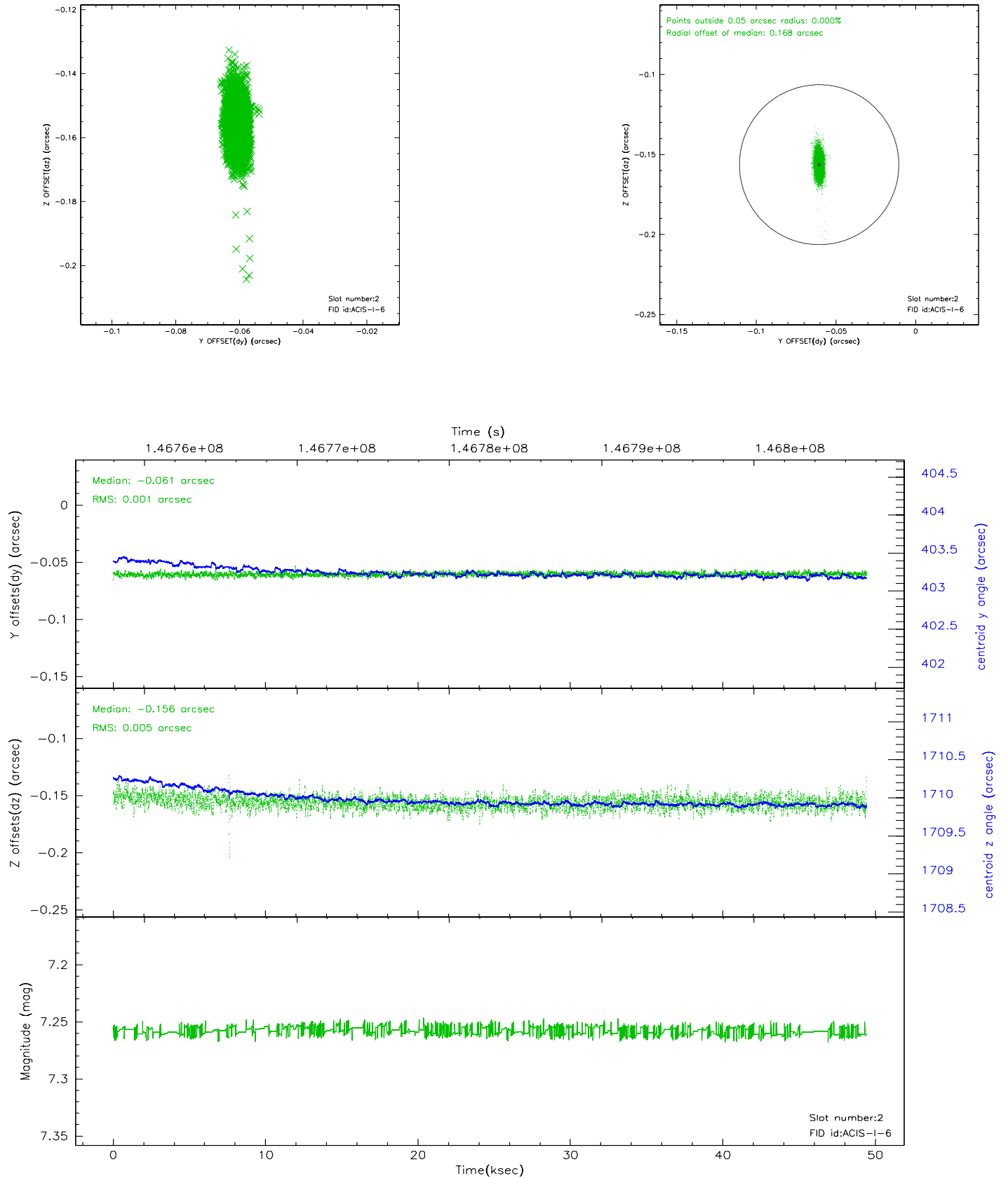
### 2.5.1 Slot 0



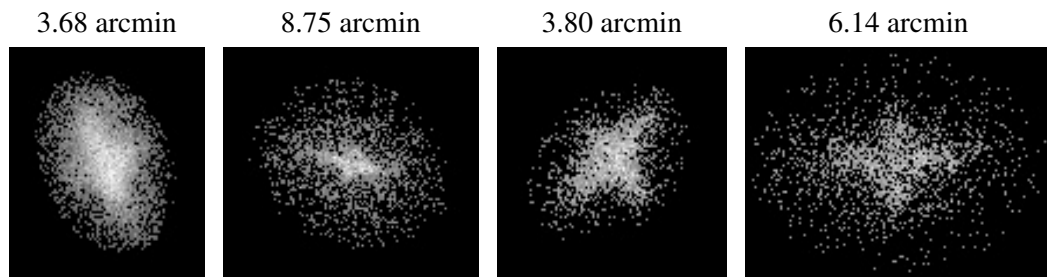
## 2.5.2 Slot 1



### 2.5.3 Slot 2



### 3 Point Sources



## A Summary

### A.1 Status

V&V Scientist	Jen Lauer
V&V Date (YYYY-MM-DD)	2006.09.29
V&V Edition	1
V&V Disposition and Status	OK
V&V Charge Time	49.43

### A.2 Comments