

V&V Reference Report

L2 ASCDS Version : 8.4.5

Observation 2219 - L2 Version 3
Chandra X-Ray Center

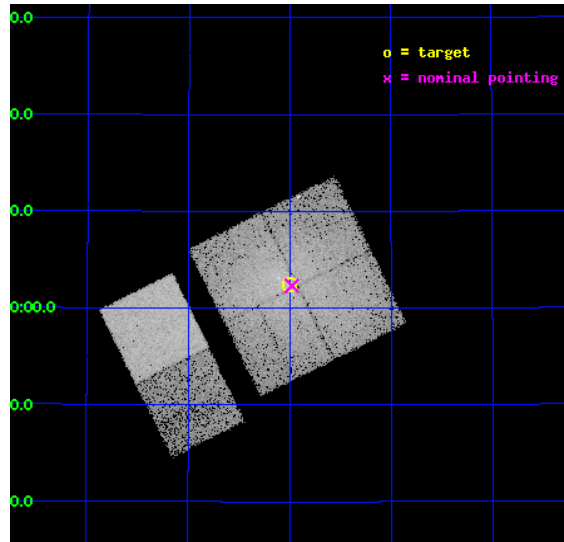
L2 Processing Date : Sep 6 2012

Contents

1	Front	2
2	OBI	3
2.1	OBI	3
2.1.1	Images	3
2.1.2	Bias	3
2.1.3	Parameters	4
2.1.4	Events	4
2.2	Compared Parameters	5
2.3	Aspect	6
2.4	Star Slots	9
2.4.1	Slot 3	9
2.4.2	Slot 4	10
2.4.3	Slot 5	11
2.4.4	Slot 6	12
2.4.5	Slot 7	13
2.5	FID Slots	14
2.5.1	Slot 0	14
2.5.2	Slot 1	15
2.5.3	Slot 2	16
A	Summary	17
A.1	Status	17
A.2	Comments	17

1 Front

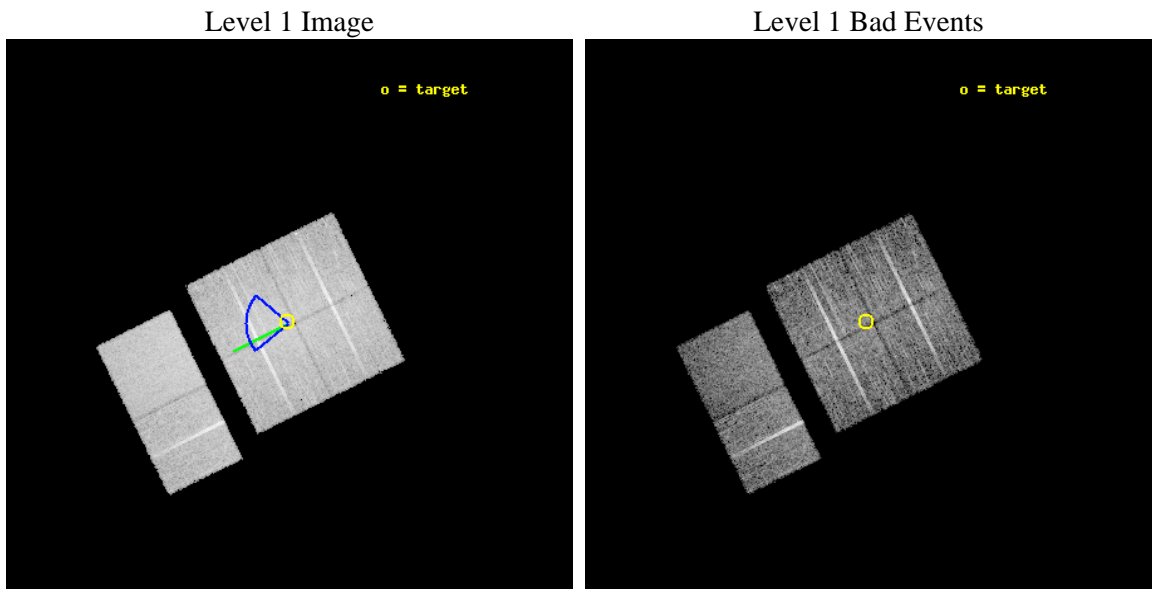
seq_num	800158	Sequence number
obs_id	2219	Observation id
title	JET-INTRACLUSTER MEDIUM INTERACTIONS OF THE RADIO GALAXY 3C 129	Pr
observer	Dr. Daniel Harris	Principal investigator
object	3C129.1	Source name
dtcycle	0	
cycle	P	events from which exps? Prim/Second/Both
ra_targ	72.5	Observer's specified target RA [deg]
dec_targ	45.041667	Observer's specified target Dec [deg]
ra_nom	72.494813968931	Nominal RA [deg]
dec_nom	45.038535265917	Nominal Dec [deg]
roll_nom	243.71233176723	Nominal Roll [deg]
revision	3	Processing version of data
ontime	9753.1154197305	Sum of GTIs [s]
livetime	9629.6155996649	Livetime [s]
ontime0	9752.9922997355	Sum of GTIs [s]
ontime1	9753.0333397388	Sum of GTIs [s]
ontime2	9749.8335191756	Sum of GTIs [s]
ontime3	9753.1154197305	Sum of GTIs [s]
ontime6	9753.1974997371	Sum of GTIs [s]
ontime7	9753.1564597338	Sum of GTIs [s]
l2events	106426	Number of level 2 events



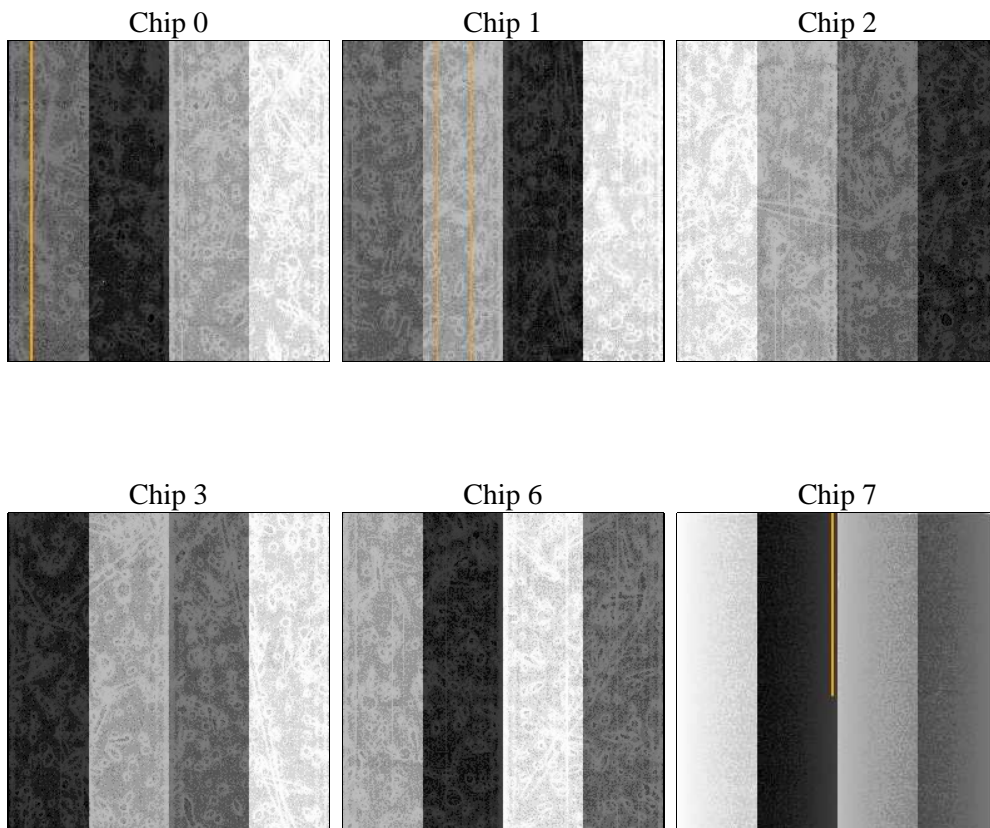
2 OBI

2.1 OBI

2.1.1 Images



2.1.2 Bias



2.1.3 Parameters

obi_num	0	Obi number	sched_exp_time	9800.000000	[s] Scheduled observation exposure time
ascdsver	8.4.5	Processing system revision	ontime	9753.1154197305	Sum of GTIs [s]
caldsver	4.5.1.1	 	ontime0	9752.9922997355	Sum of GTIs [s]
date	2012-09-06T09:30:17	Date and time of file creation	ontime1	9753.0333397388	Sum of GTIs [s]
revision	3	Processing version of data	ontime2	9749.8335191756	Sum of GTIs [s]
			ontime3	9753.1154197305	Sum of GTIs [s]
			ontime6	9753.1974997371	Sum of GTIs [s]
			ontime7	9753.1564597338	Sum of GTIs [s]
			l1events	404236	Number of level 1 events

2.1.4 Events

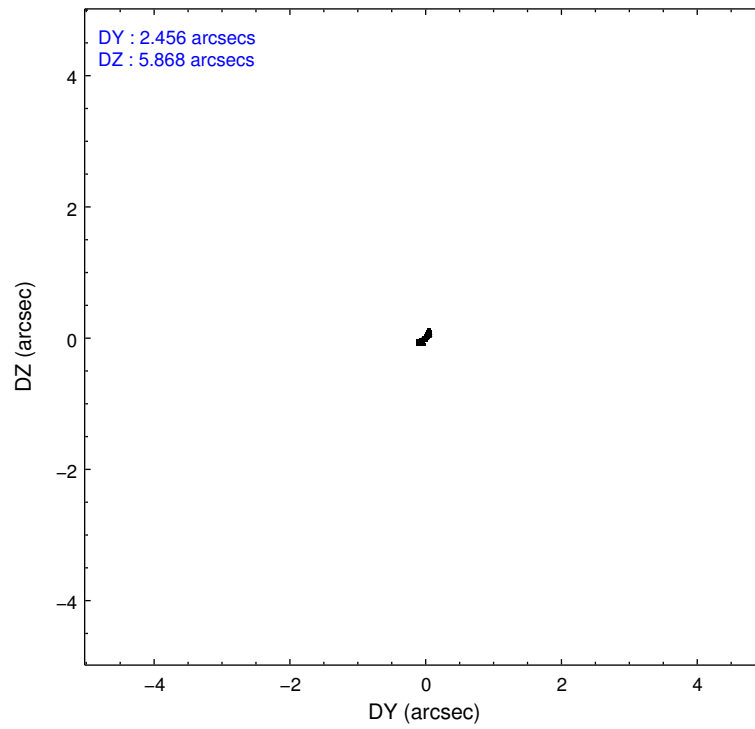
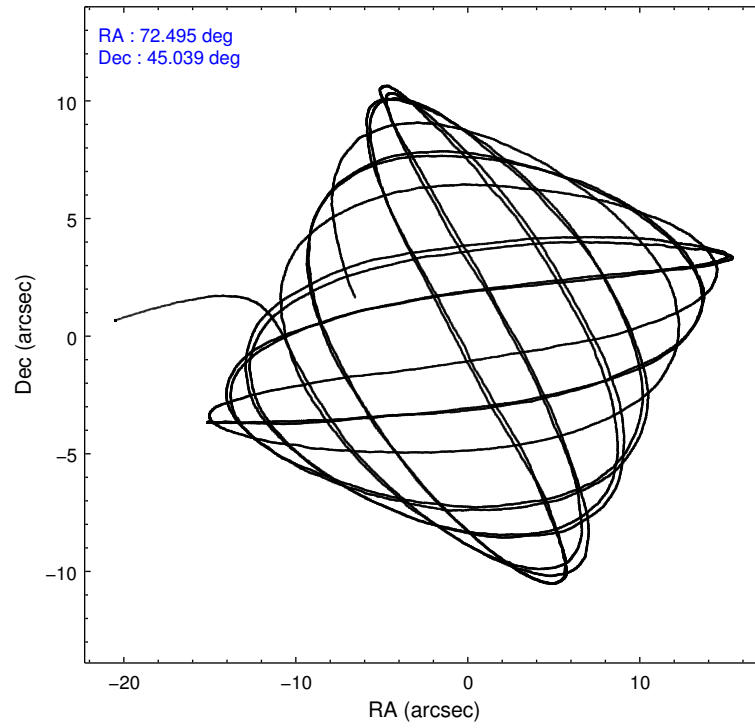
	ccd 0	ccd 1	ccd 2	ccd 3	ccd 6	ccd 7		ccd 0	ccd 1	ccd 2	ccd 3	ccd 6	ccd 7
level 1 events	64568	64568	66888	71140	61303	75769	grade 0 events	11986	10465	11217	13697	4305	3367
rejected events	46053	47714	49654	50547	52623	43031		18%	16%	16%	19%	7%	4%
rejected %	71%	73%	74%	71%	85%	56%	grade 1 events	64	59	62	68	36	71
								0%	0%	0%	0%	0%	0%
							grade 2 events	2767	2557	2573	2908	1579	6619
								4%	3%	3%	4%	2%	8%
							grade 3 events	1104	1119	992	1122	718	2940
								1%	1%	1%	1%	1%	3%
							grade 4 events	1061	1068	970	1181	729	3055
								1%	1%	1%	1%	1%	4%
							grade 5 events	2023	2211	2020	2183	2573	7016
								3%	3%	3%	3%	4%	9%
							grade 6 events	1612	1651	1492	1704	1354	16775
								2%	2%	2%	2%	2%	22%
							grade 7 events	43951	45438	47562	48277	50009	35926
								68%	70%	71%	67%	81%	47%

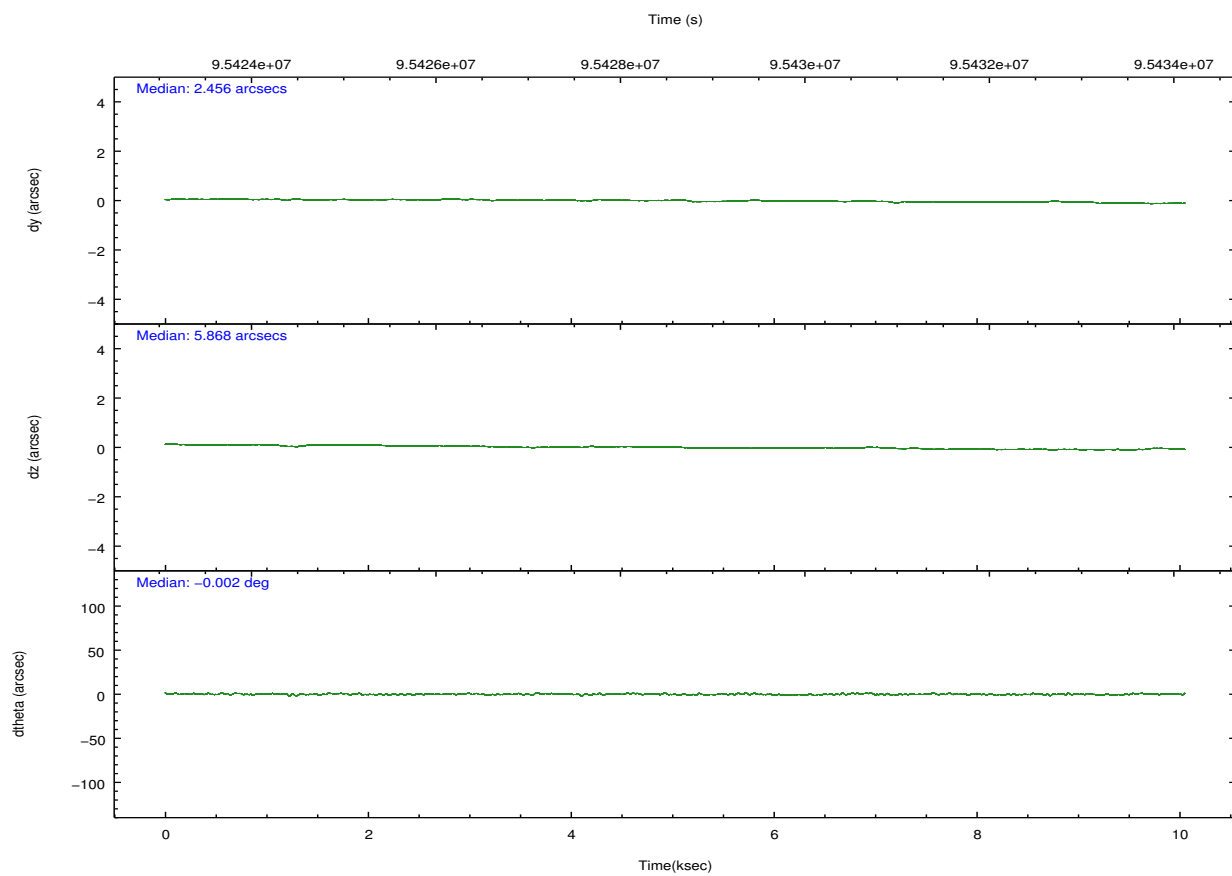
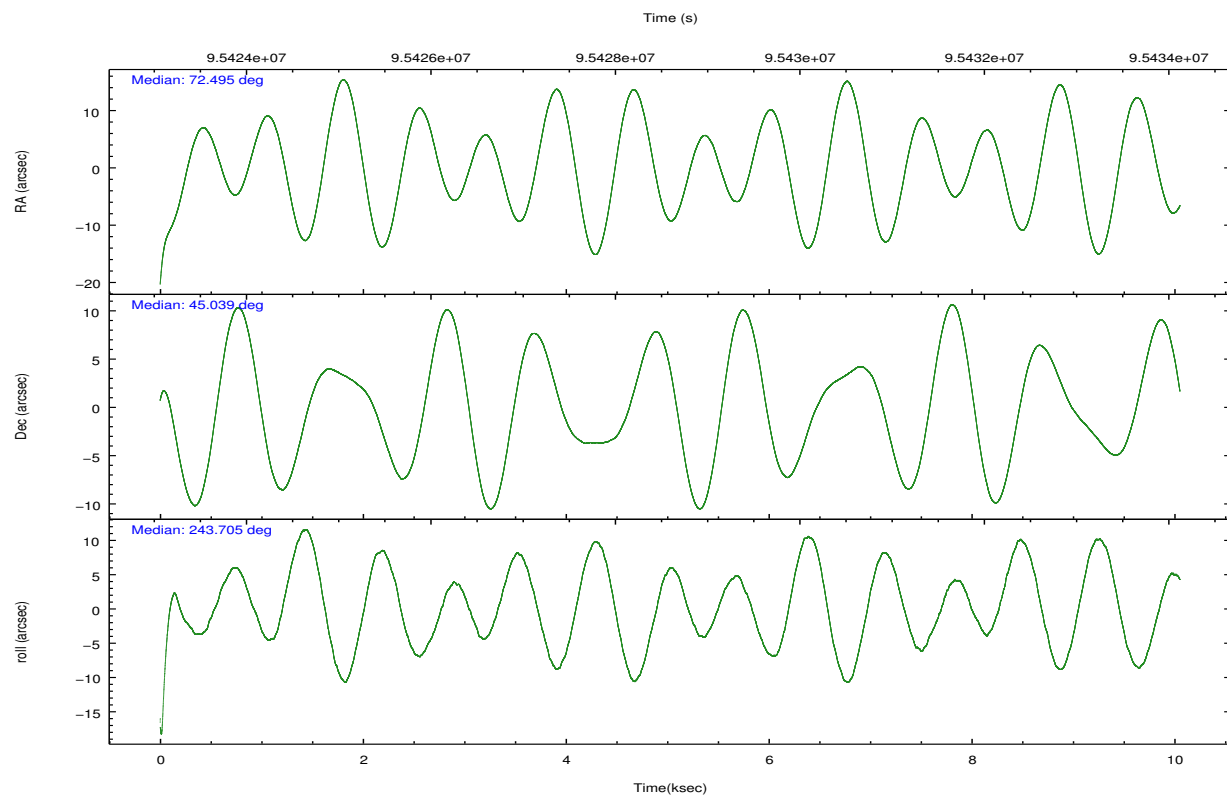
2.2 Compared Parameters

Parameter	Planned	Actual
Instrument	ACIS	ACIS
Detector	ACIS-012367	ACIS-012367
Grating	NONE	NONE
Data mode	FAINT	FAINT
Observation mode	POINTING	POINTING
[deg] Pointing RA	72.492362	72.49481396893144
[deg] Pointing Dec	45.065963	45.0385352659173
[deg] Pointing Roll	243.505408	243.7123317672259
[deg] Roll angle	270.000000	270.000000
[deg] Roll tolerance	40.000000	40.000000
Roll constraint allows 180D rotation	N	N
[mm] SIM focus pos	-0.782348	-0.7809083437167272
[mm] SIM defocus	0	0.001439871863259334
[mm] SIM translation stage pos	-233.592463	-233.5874344608287
[mm] SIM translation stage offset	0	-0.005018542100998502
[s] Observation start time (MET)	95423817.184000	95422809.316697
Observation start date	2001-01-09T10:35:53	2001-01-09T10:20:09
[s] Observation end time (MET)	95433617.184000	95434263.179636
Observation end date	2001-01-09T13:19:13	2001-01-09T13:31:03
Read mode	TIMED	TIMED

Parameter	Planned	Actual
Obspar format version number	7	7
Obspar file type	PREDICTED	ACTUAL
Obspar update status	NONE	UPDATED
Number of optional ACIS chips dropped	0	0
On-chip summing requested	N	N
Subarray requested	NONE	NONE
Alternating exposures requested	N	N
[s] Primary exposure time	0.000000	3.2

2.3 Aspect



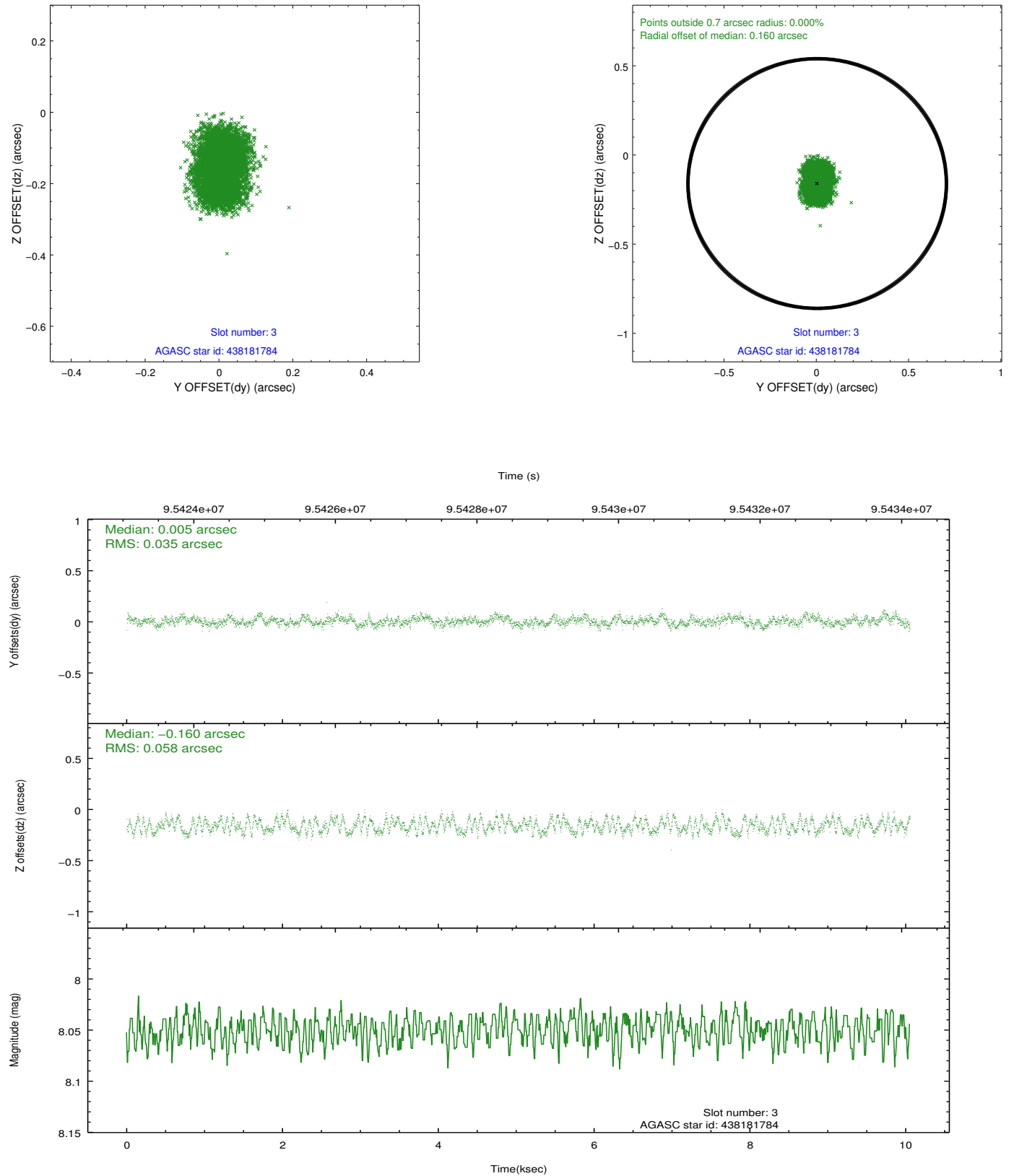


Slot Statistics

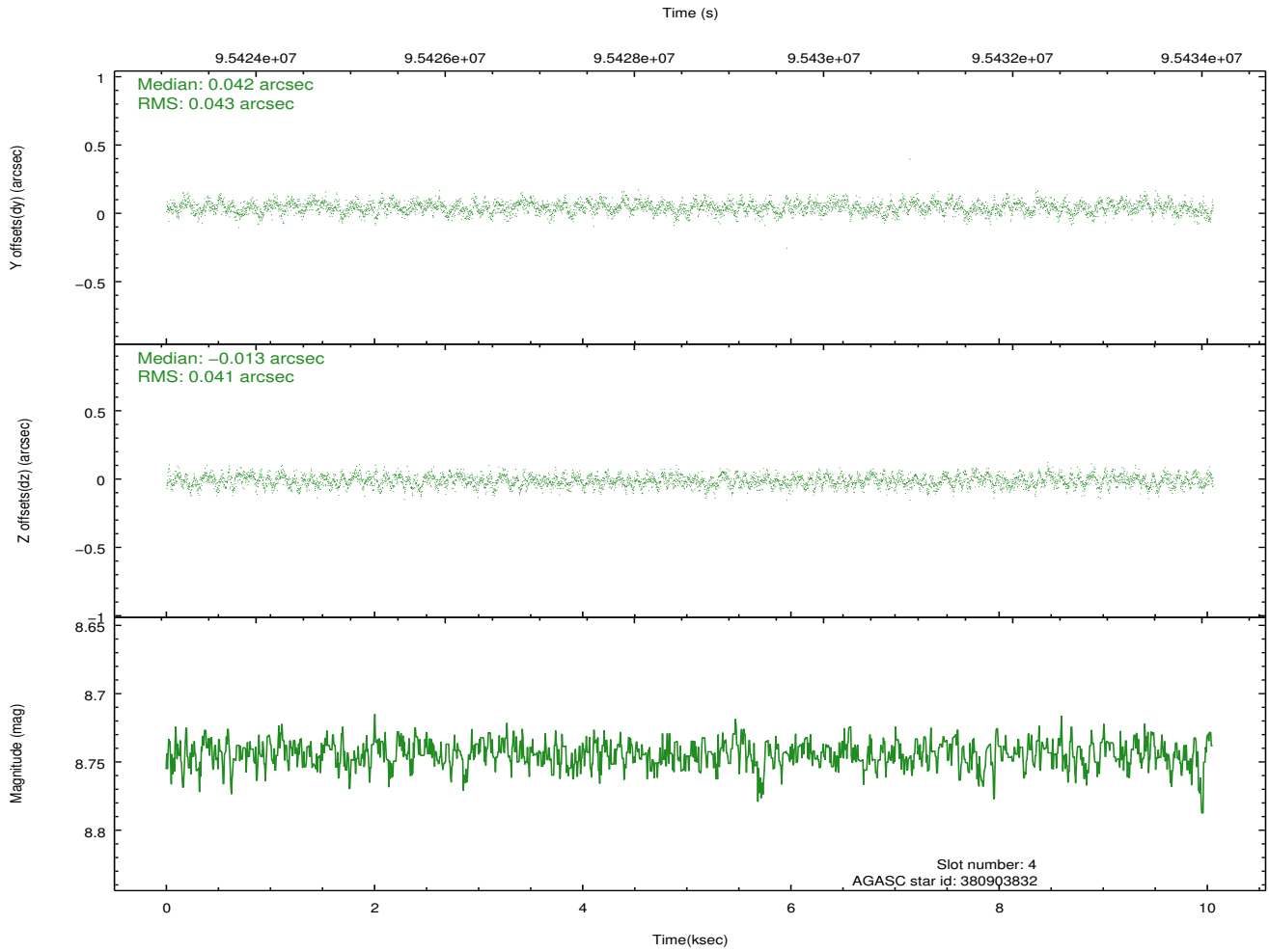
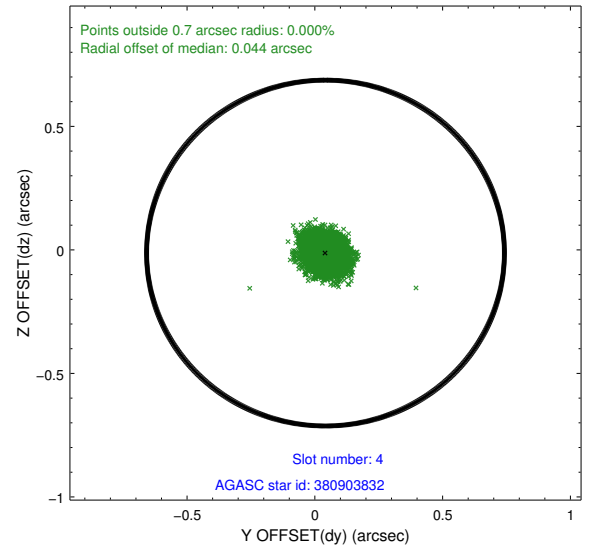
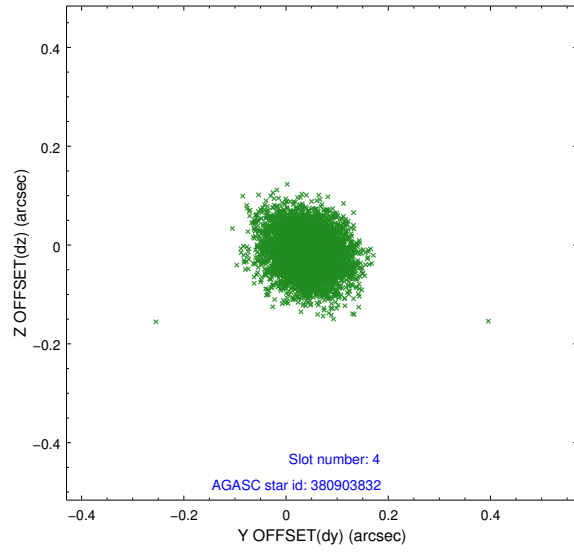
slot	status	id	mag	n_pts	med_dy	med_dz	dr1	dr2	ra	dec	mean_y	mean_z
0	FID	ACIS-I-2	7.16	2452	-0.030	-0.045	0.009	0.015	0.000000	0.000000	-756.84	-835.64
1	FID	ACIS-I-4	7.18	2451	-0.025	0.038	0.006	0.011	0.000000	0.000000	2156.99	1070.34
2	FID	ACIS-I-5	7.23	2451	-0.045	0.075	0.009	0.015	0.000000	0.000000	-1810.00	1068.84
3	GUIDE	438181784	8.05	4904	0.005	-0.160	0.074	0.112	71.972233	45.489356	-781.28	-1856.74
4	GUIDE	380903832	8.74	4903	0.042	-0.013	0.063	0.100	72.555284	44.802199	778.69	567.30
5	GUIDE	438174168	9.07	4905	-0.015	0.027	0.073	0.120	71.685812	45.177000	547.41	-2014.30
6	GUIDE	380897112	8.95	4905	-0.041	0.106	0.061	0.099	73.055571	44.974202	-348.04	1428.56
7	GUIDE	438176744	9.48	4901	0.011	0.044	0.084	0.138	72.786347	45.702571	-2381.26	-361.25

2.4 Star Slots

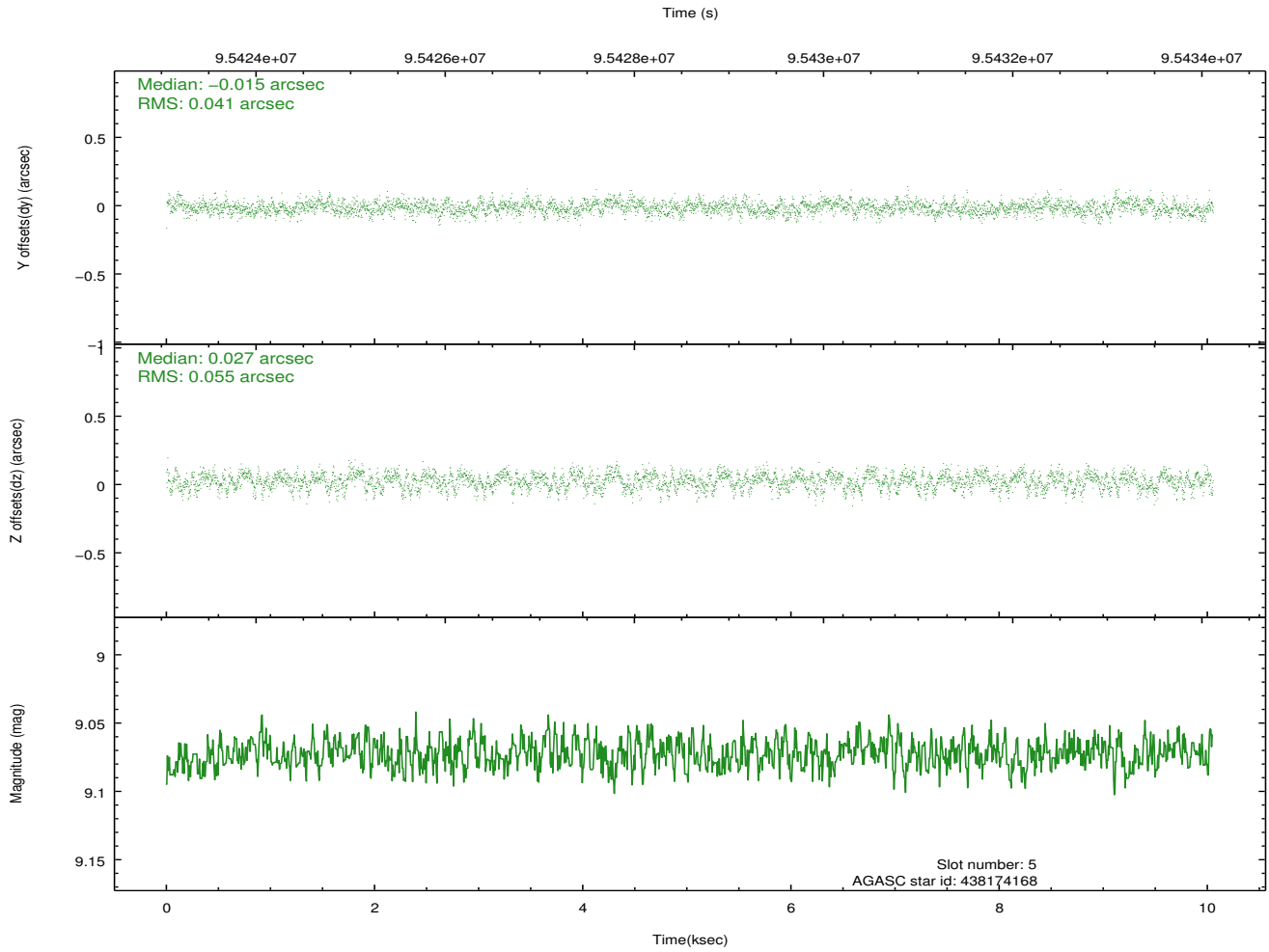
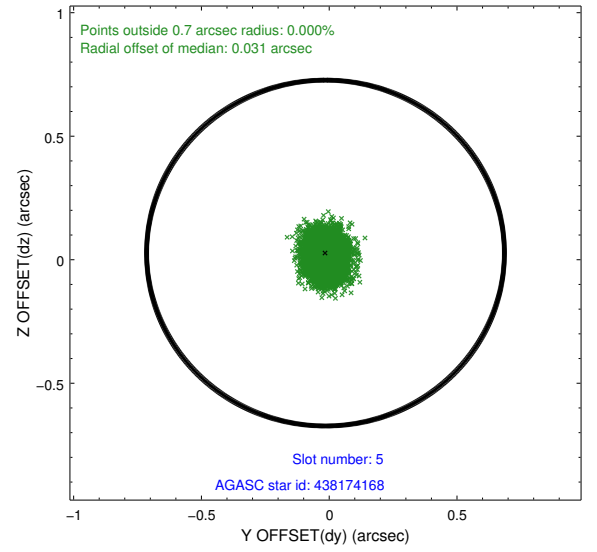
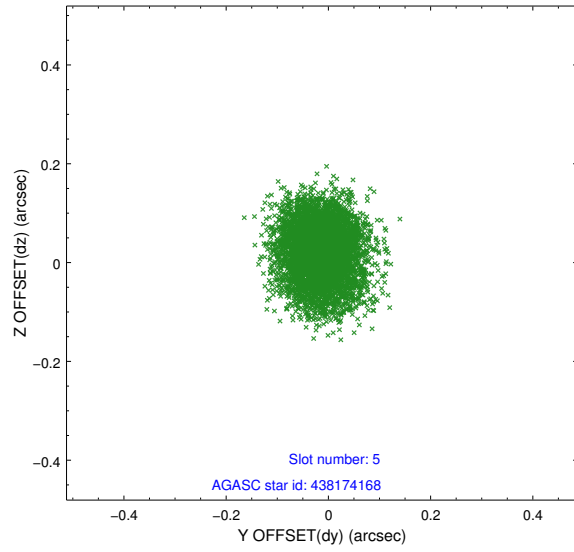
2.4.1 Slot 3



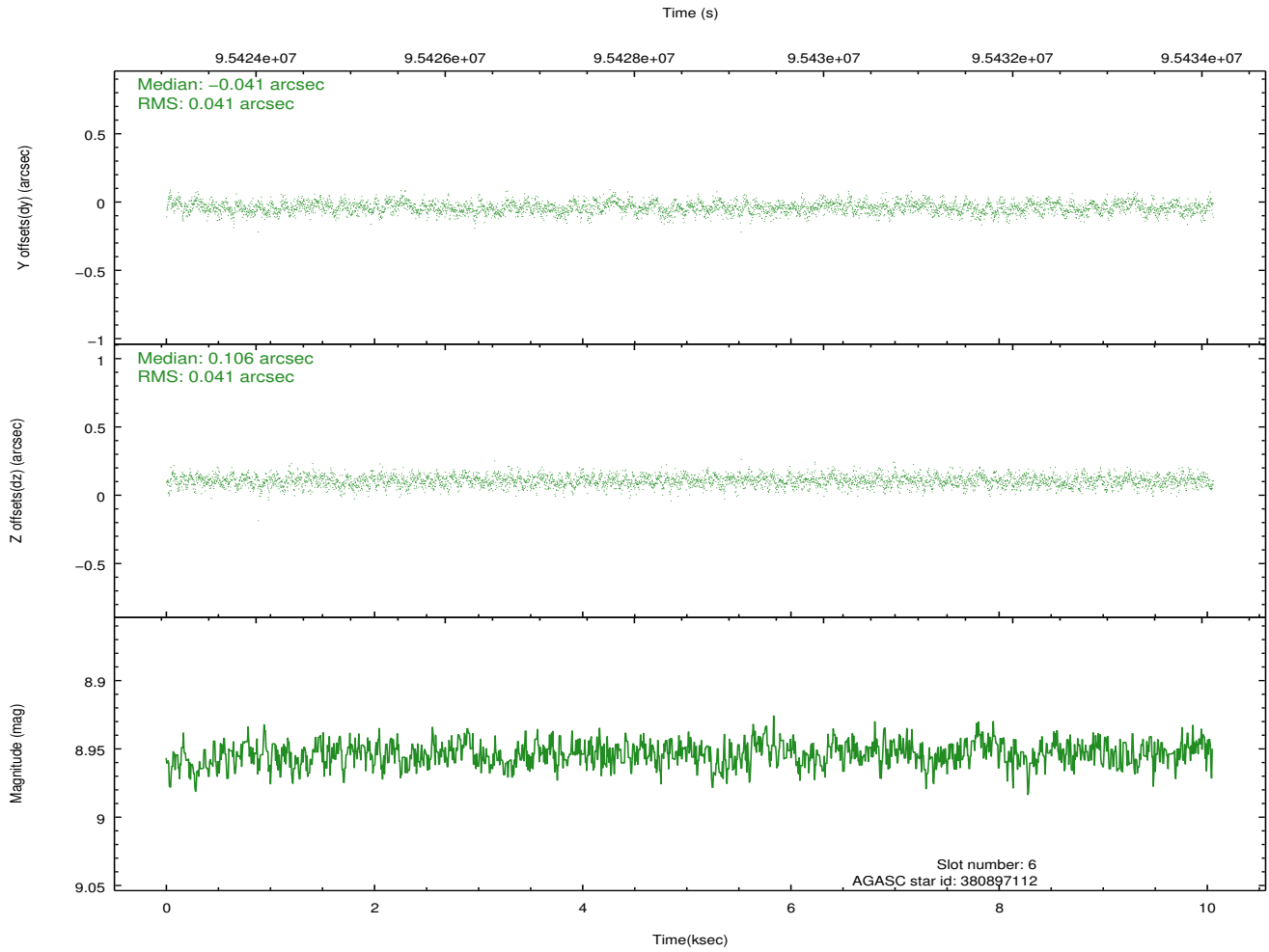
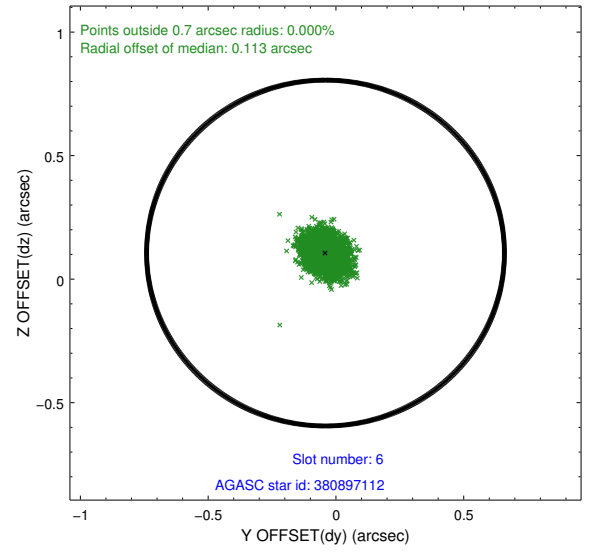
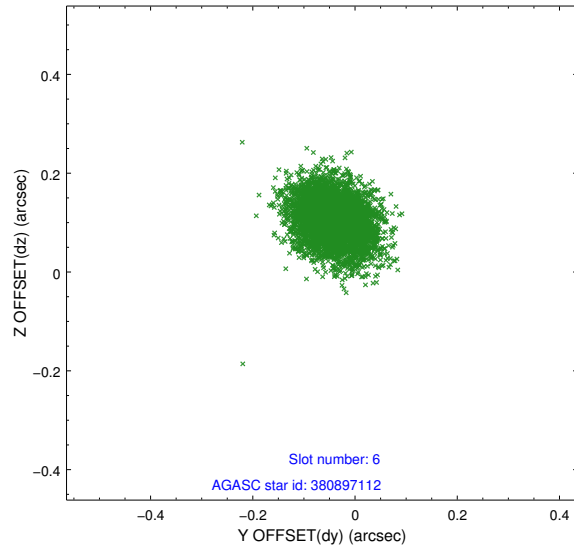
2.4.2 Slot 4



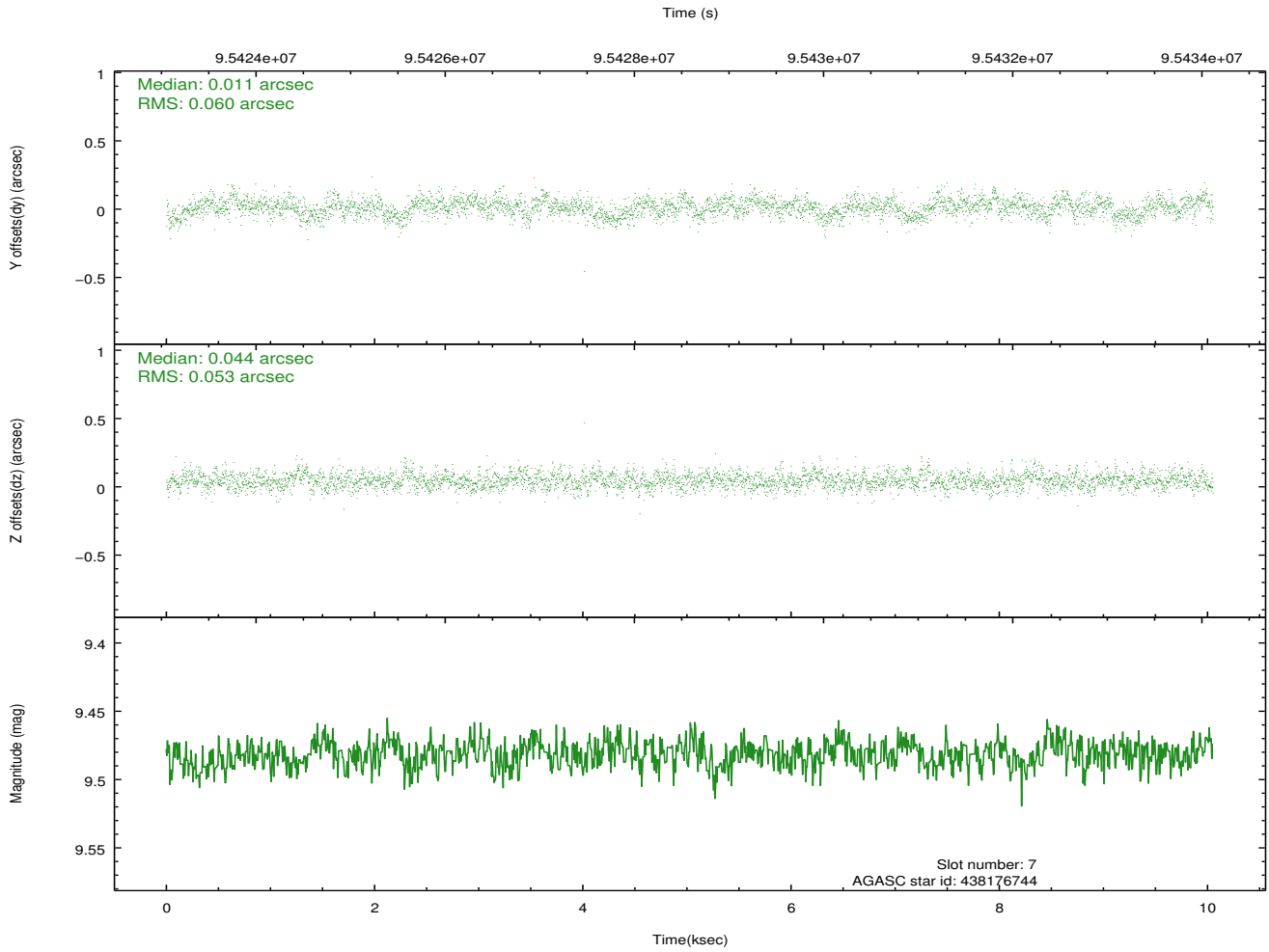
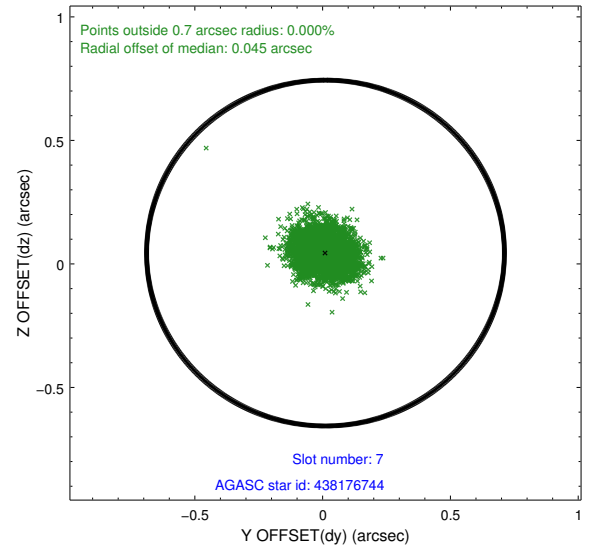
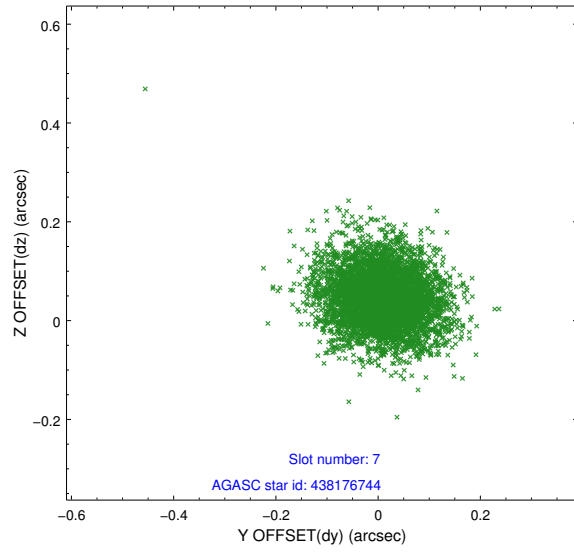
2.4.3 Slot 5



2.4.4 Slot 6

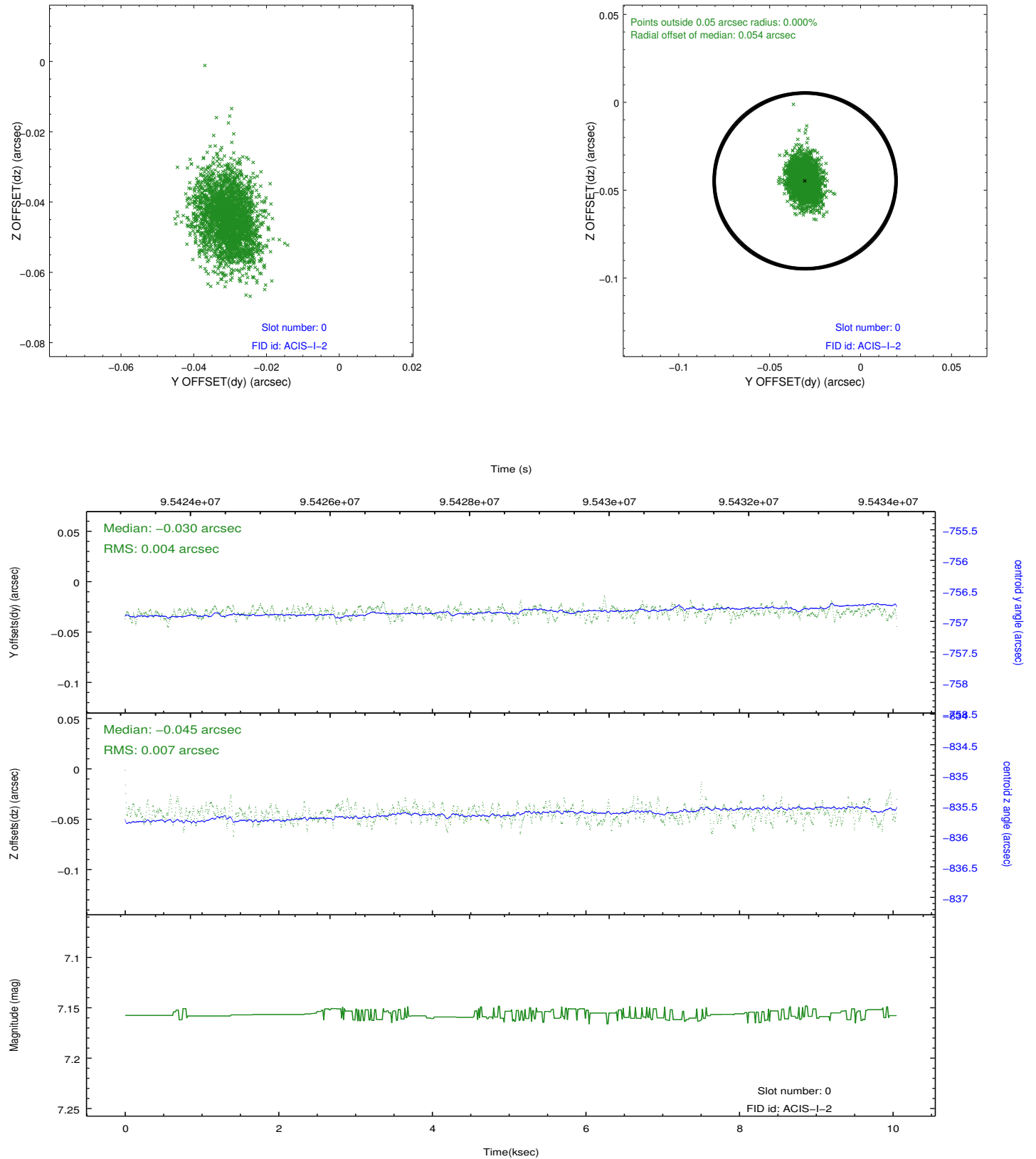


2.4.5 Slot 7

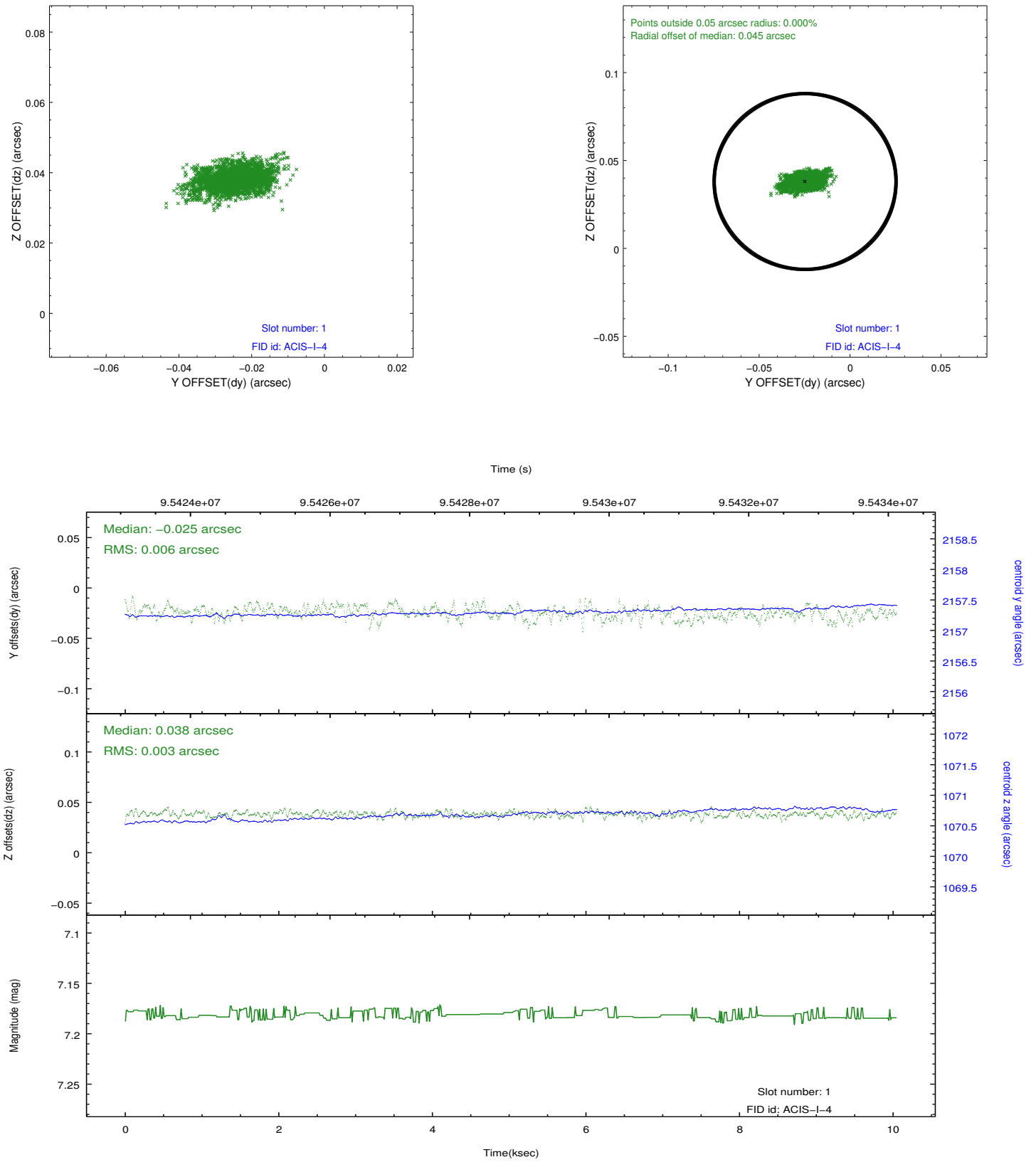


2.5 FID Slots

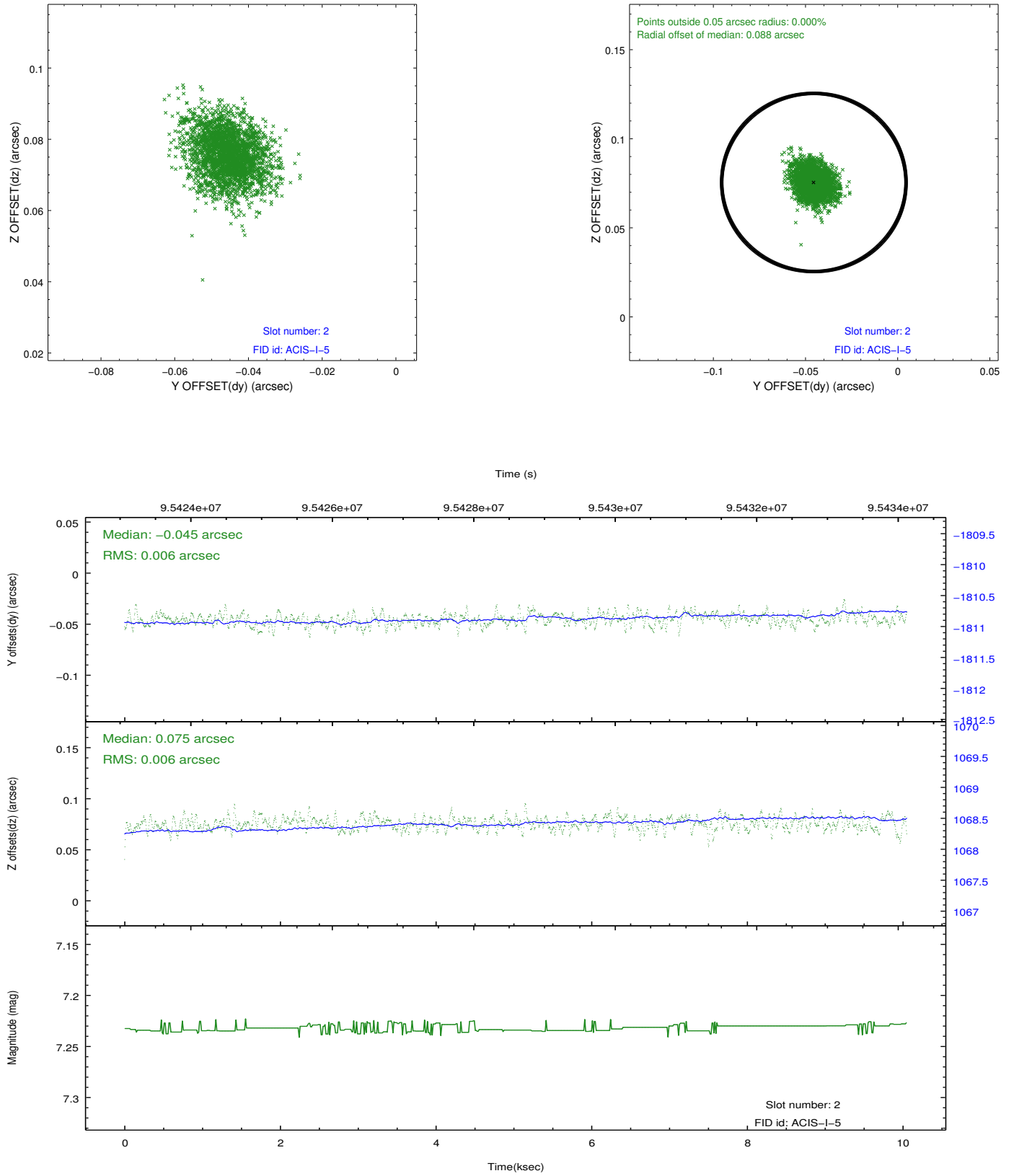
2.5.1 Slot 0



2.5.2 Slot 1



2.5.3 Slot 2



A Summary

A.1 Status

V&V Scientist	Jen Lauer
V&V Date (YYYY-MM-DD)	2012.09.14
V&V Edition	1
V&V Disposition and Status	OK
V&V Charge Time	9.753

A.2 Comments

Roll constraint met.