

# V&V Reference Report

## L2 ASCDS Version : 7.6.10

Observation 19 - L2 Version 001  
Chandra X-Ray Center

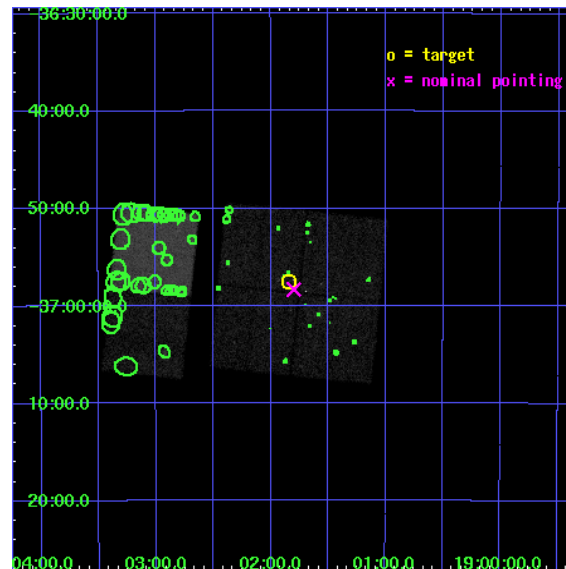
L2 Processing Date : Jun 9 2007

## Contents

<b>1</b>	<b>Front</b>	<b>2</b>
<b>2</b>	<b>OBI</b>	<b>3</b>
2.1	OBI . . . . .	3
2.1.1	Images . . . . .	3
2.1.2	Bias . . . . .	3
2.1.3	Parameters . . . . .	4
2.1.4	Events . . . . .	4
2.2	Compared Parameters . . . . .	5
2.3	Aspect . . . . .	6
2.4	Star Slots . . . . .	9
2.4.1	Slot 3 . . . . .	9
2.4.2	Slot 4 . . . . .	10
2.4.3	Slot 5 . . . . .	11
2.4.4	Slot 6 . . . . .	12
2.4.5	Slot 7 . . . . .	13
2.5	FID Slots . . . . .	14
2.5.1	Slot 0 . . . . .	14
2.5.2	Slot 1 . . . . .	15
2.5.3	Slot 2 . . . . .	16
<b>3</b>	<b>Point Sources</b>	<b>17</b>
<b>A</b>	<b>Summary</b>	<b>18</b>
A.1	Status . . . . .	18
A.2	Comments . . . . .	18

# 1 Front

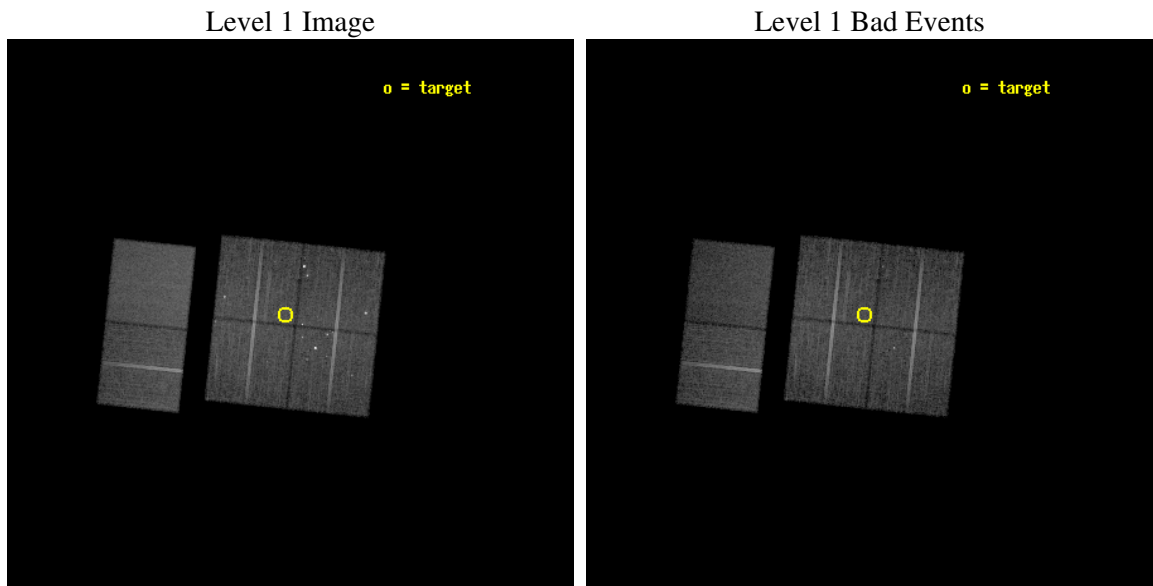
seq_num	200017
obs_id	19
title	X-RAYS FROM THE YOUNGEST STARS IN THE CORONA AUSTRALIS CLOUD
observer	Prof. Gordon Garmire
object	CRA CLOUD CORE
dtcycle	0
cycle	P
ra_targ	285.460833
dec_targ	-36.958333
ra_nom	285.44976216224
dec_nom	-36.972116857013
roll_nom	276.01236613062
revision	2
ontime	19958.400018588
livetime	19705.674740047
ontime0	19958.400018588
ontime1	19958.400018588
ontime2	19958.400018588
ontime3	19958.400018588
ontime6	19955.159038424
ontime7	19958.400018588
l2events	134354



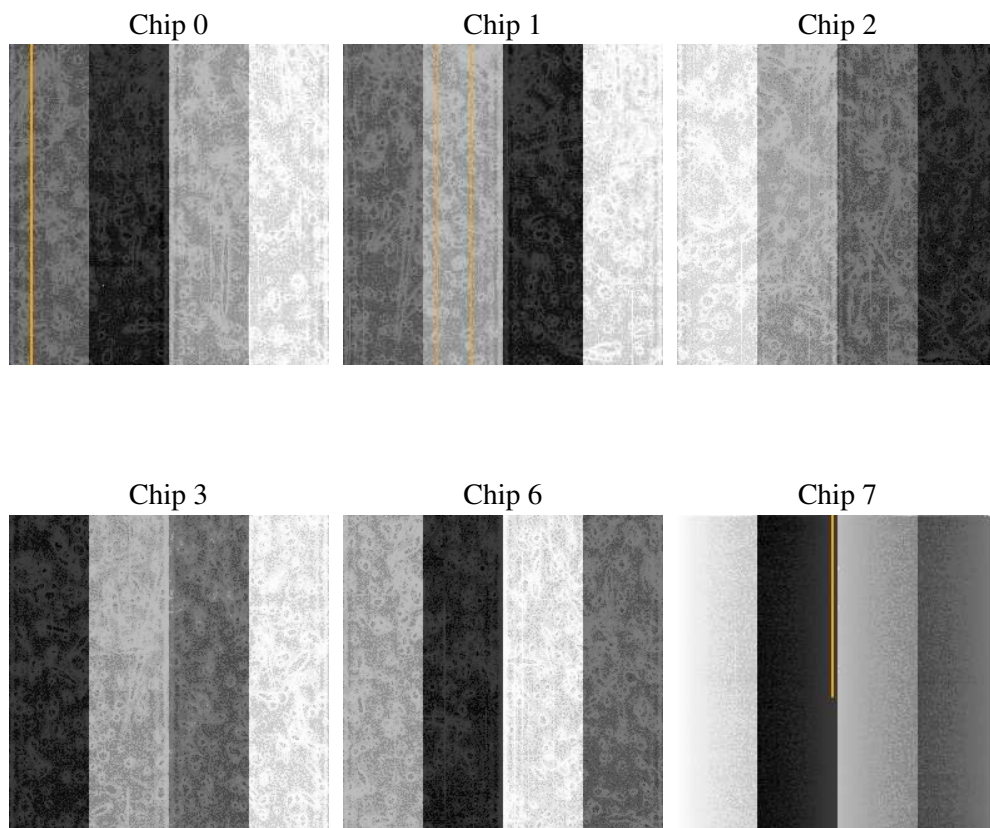
## 2 OBI

### 2.1 OBI

#### 2.1.1 Images



#### 2.1.2 Bias



### 2.1.3 Parameters

obi_num	0
ascdsver	7.6.10
caldsver	3.4.0
date	2007-06-09T19:55:54
revision	2

sched_exp_time	20000.000000
ontime	19958.400018588
ontime0	19958.400018588
ontime1	19958.400018588
ontime2	19958.400018588
ontime3	19958.400018588
ontime6	19955.159038424
ontime7	19958.400018588
l1events	754316

### 2.1.4 Events

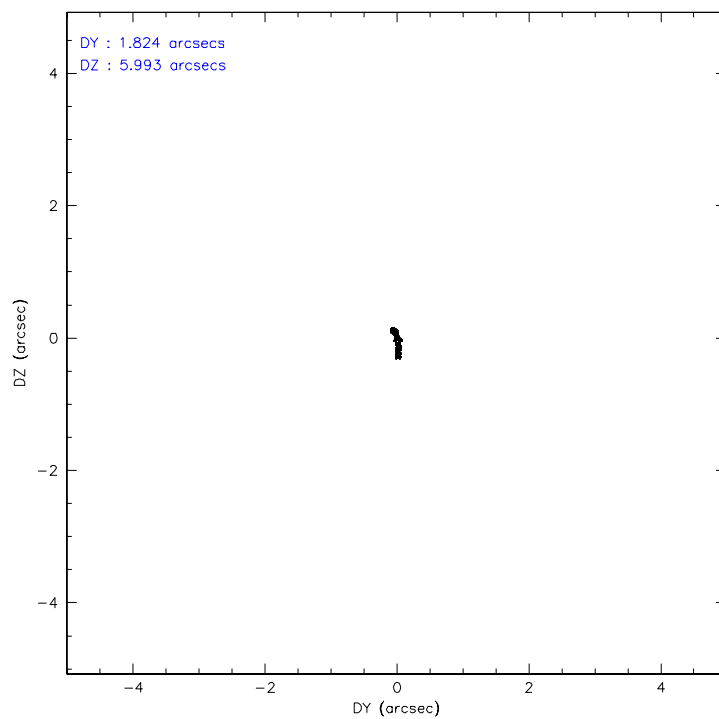
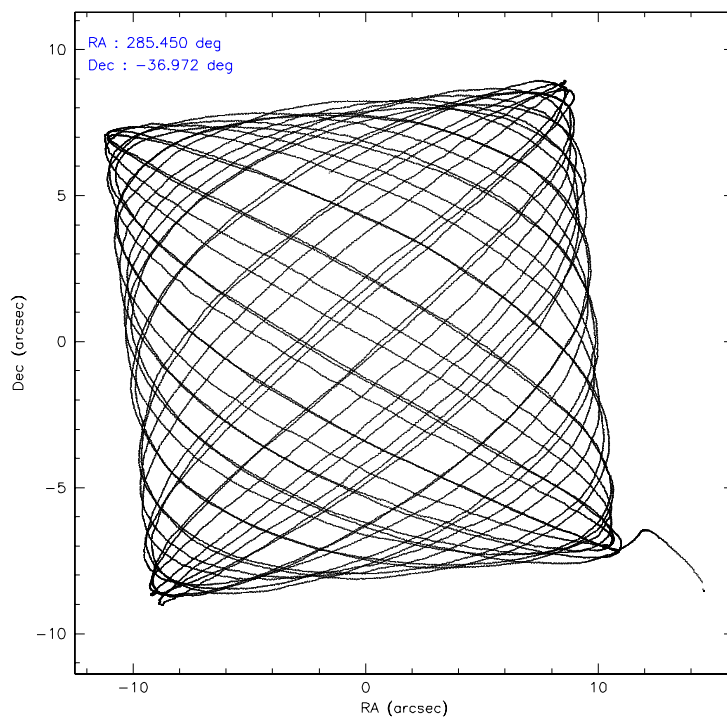
	ccd 0	ccd 1	ccd 2	ccd 3	ccd 6	ccd 7
level 1 events	117788	119681	121869	122301	125680	146997
rejected events	96295	96393	108697	107379	112373	86152
rejected %	81%	80%	89%	87%	89%	58%

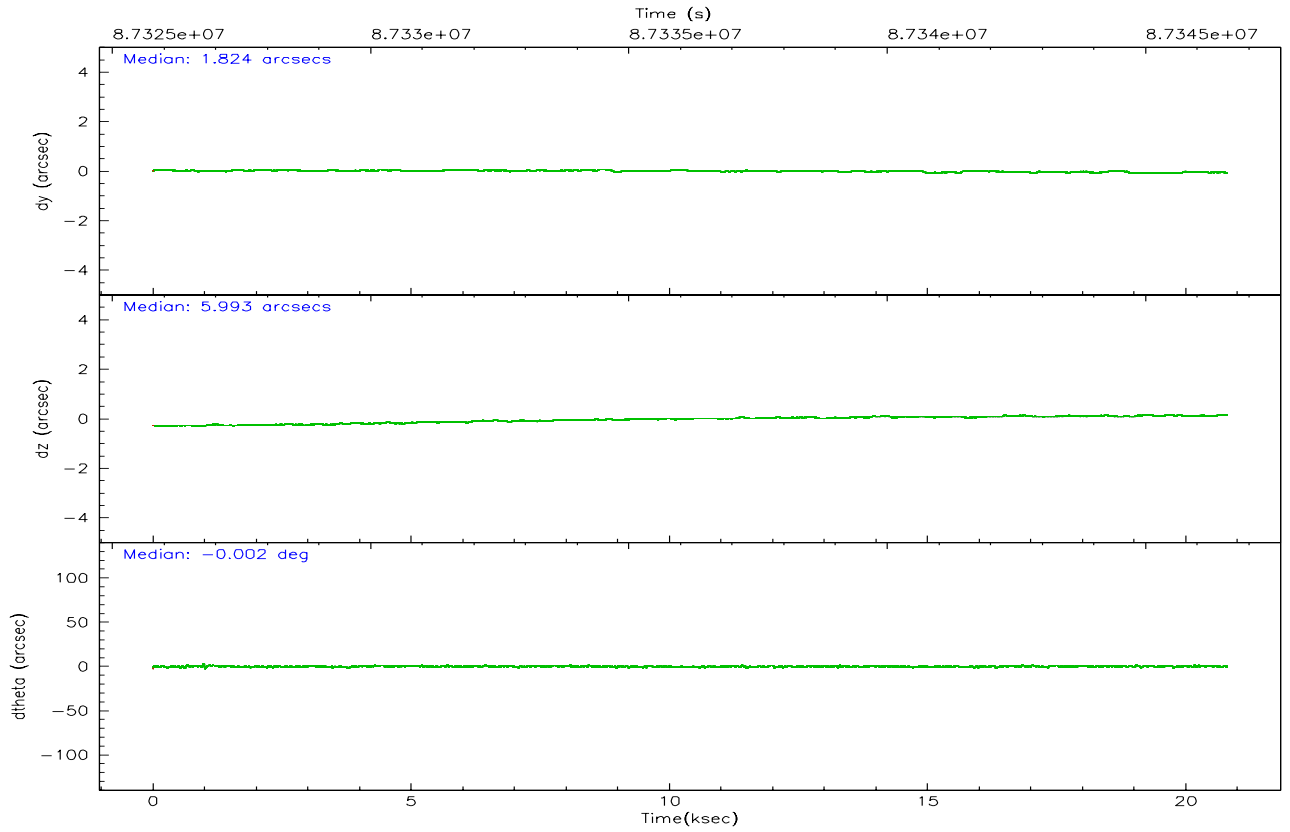
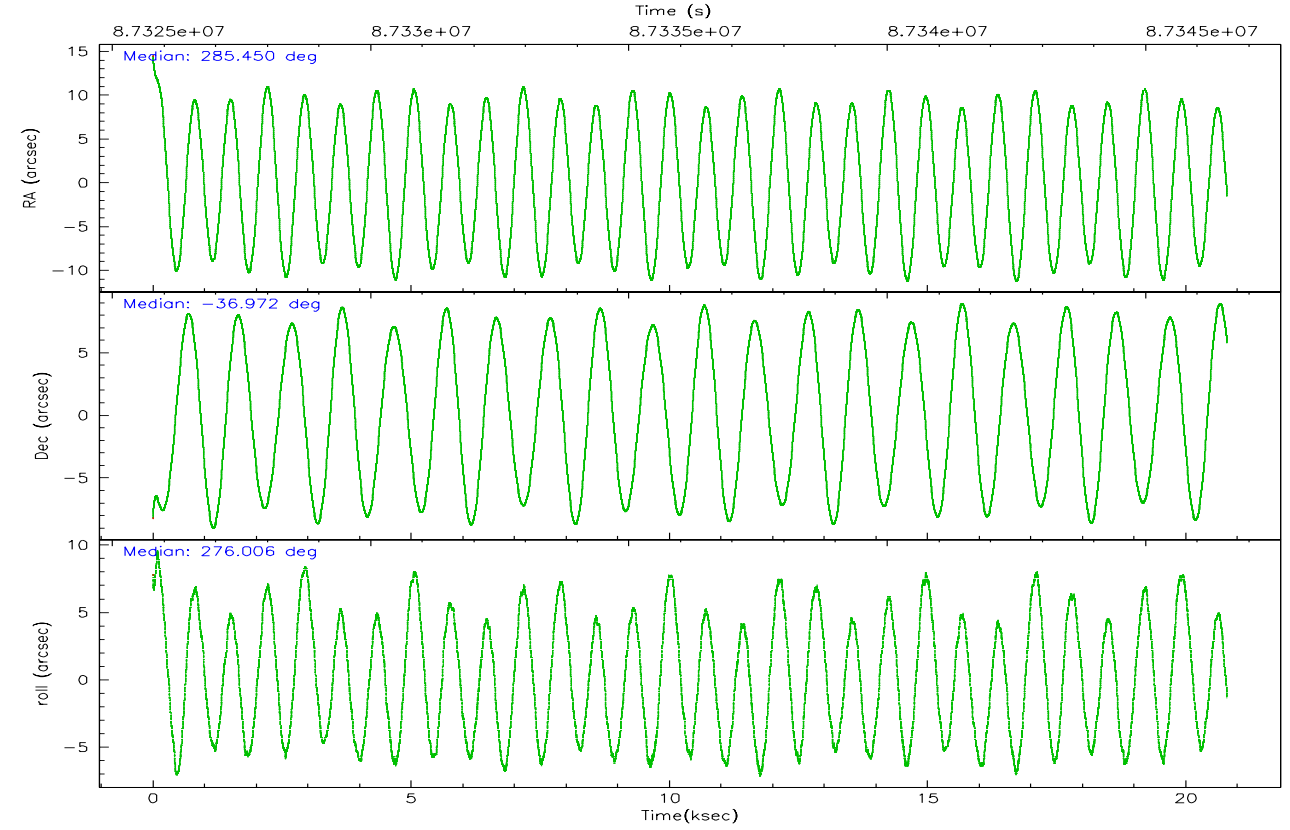
	ccd 0	ccd 1	ccd 2	ccd 3	ccd 6	ccd 7
grade 0 events	12086	13161	5812	6997	5275	5699
	10%	10%	4%	5%	4%	3%
grade 1 events	413	191	59	54	46	130
	0%	0%	0%	0%	0%	0%
grade 2 events	3644	3704	2739	2775	2633	11905
	3%	3%	2%	2%	2%	8%
grade 3 events	1676	1828	1234	1342	1409	5636
	1%	1%	1%	1%	1%	3%
grade 4 events	1523	1733	1207	1394	1321	5402
	1%	1%	0%	1%	1%	3%
grade 5 events	4234	4473	3953	4391	4904	13885
	3%	3%	3%	3%	3%	9%
grade 6 events	2568	2862	2183	2419	2671	32214
	2%	2%	1%	1%	2%	21%
grade 7 events	91644	91729	104682	102929	107421	72126
	77%	76%	85%	84%	85%	49%

## 2.2 Compared Parameters

Parameter	Planned	Actual	Parameter	Planned	Actual
Instrument	ACIS	ACIS	Obspar format version number	6	6
Detector	ACIS-012367	ACIS-012367	Obspar file type	PREDICTED	ACTUAL
Grating	NONE	NONE	Obspar update status	NONE	UPDATED
Data mode	FAINT	FAINT	Number of optional ACIS chips dropped	0	0
Observation mode	POINTING	POINTING	On-chip summing requested	N	N
Pointing RA	285.429565	285.4497621622447	Subarray requested	NONE	NONE
Pointing Dec	-36.949815	-36.97211685701308	Alternating exposures requested	N	N
Pointing Roll	275.791542	276.012366130615	Primary exposure time	3.200000	3.2
SIM focus pos (mm)	-0.782348	-0.7809083437167272			
SIM defocus (mm)	0	0.001439871863259334			
SIM translation stage pos (mm)	-233.592463	-233.5874344608287			
SIM translation stage offset (mm)	0	-0.005018542100998502			
Observation start time	87326584.184000	87325319.25845499			
Observation start date	2000-10-07T17:22:00	2000-10-07T17:01:59			
Observation end time	87346584.184000	87347461.30929101			
Observation end date	2000-10-07T22:55:20	2000-10-07T23:11:01			
Read mode	TIMED	TIMED			

## 2.3 Aspect





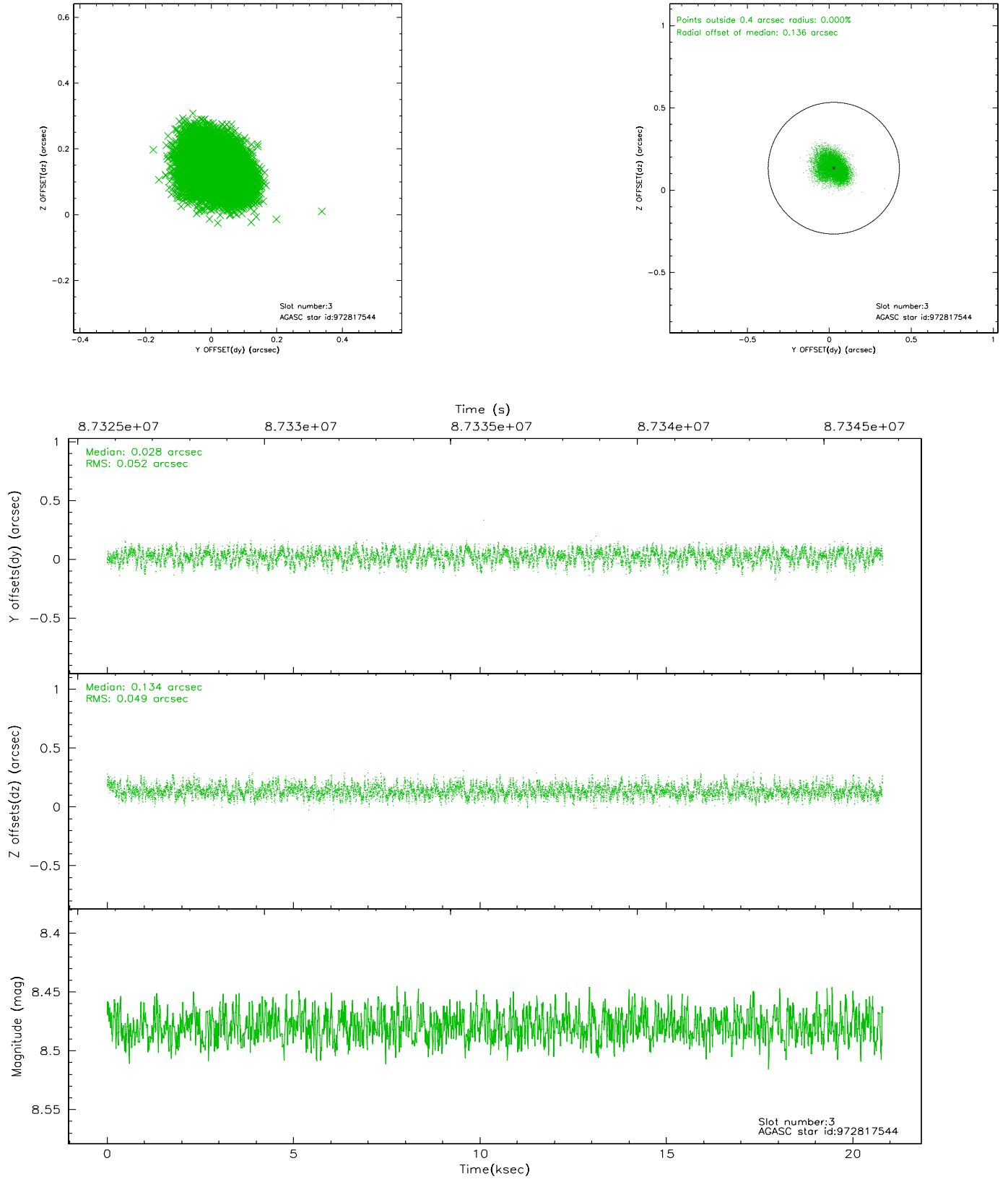
### Slot Statistics

slot	status	id	mag	n_pts	med_dy	med_dz	dr1	dr2	ra	dec	mean_y	mean_z
0	FID	ACIS-I-2	7.15	5073	-0.030	-0.039	0.009	0.016	0.000000	0.000000	-756.20	-835.73
1	FID	ACIS-I-4	7.18	5073	-0.067	0.036	0.006	0.010	0.000000	0.000000	2157.74	1070.44
2	FID	ACIS-I-5	7.23	5074	-0.004	0.071	0.009	0.015	0.000000	0.000000	-1809.78	1068.51
3	GUIDE	972817544	8.48	10142	0.028	0.134	0.078	0.122	286.185059	-36.844707	-149.13	2203.12
4	GUIDE	1037567144	8.74	10143	0.082	-0.066	0.071	0.116	284.940440	-37.605390	2210.43	-1625.83
5	GUIDE	972694616	8.71	10143	-0.183	0.080	0.067	0.110	285.528297	-36.361626	-2078.33	498.43
6	GUIDE	972693800	9.23	10142	-0.133	-0.028	0.079	0.132	285.460080	-36.664658	-1013.43	191.46
7	GUIDE	972692568	9.63	10137	0.208	-0.125	0.082	0.133	285.064965	-37.263950	1021.26	-1153.33

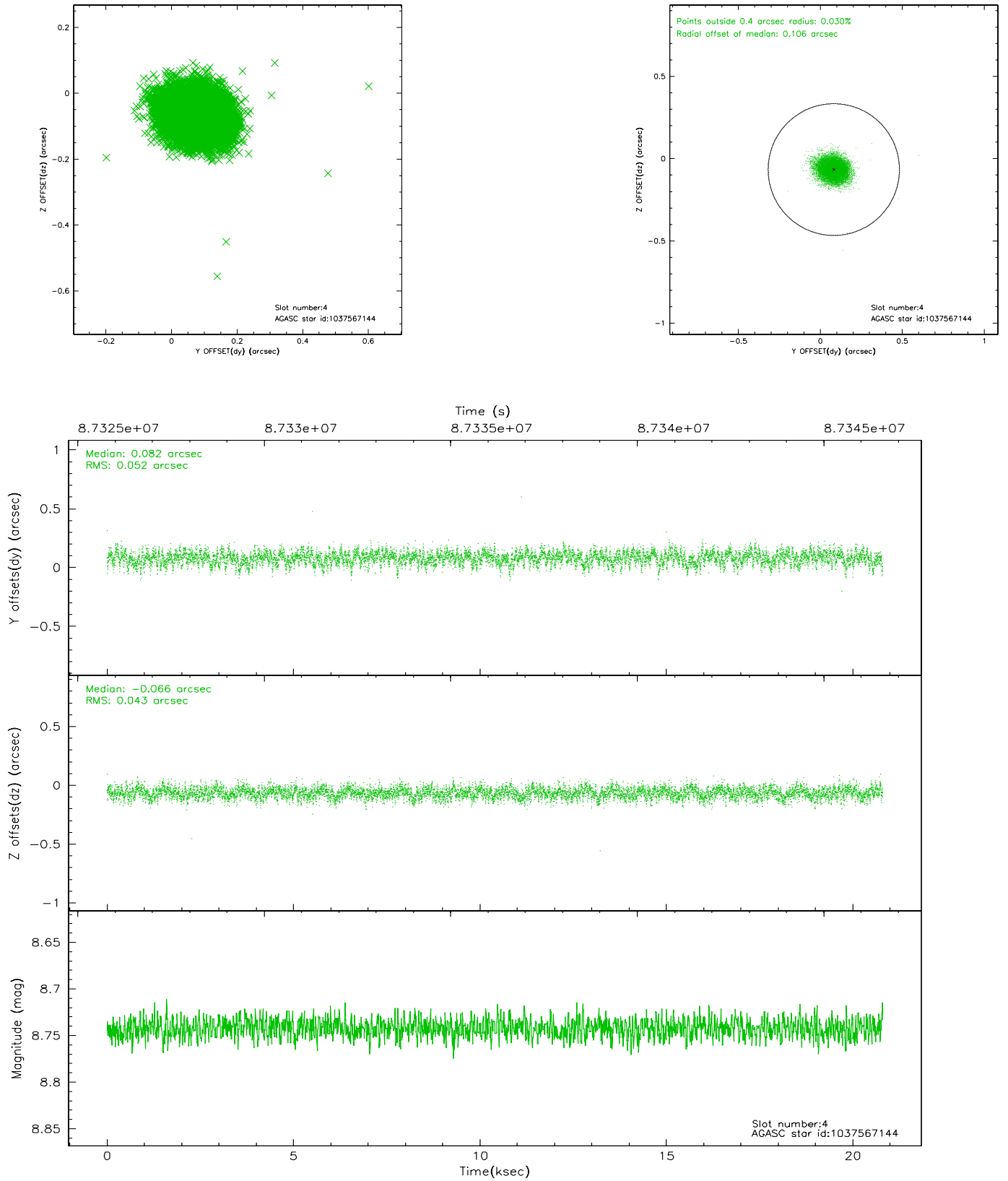


## 2.4 Star Slots

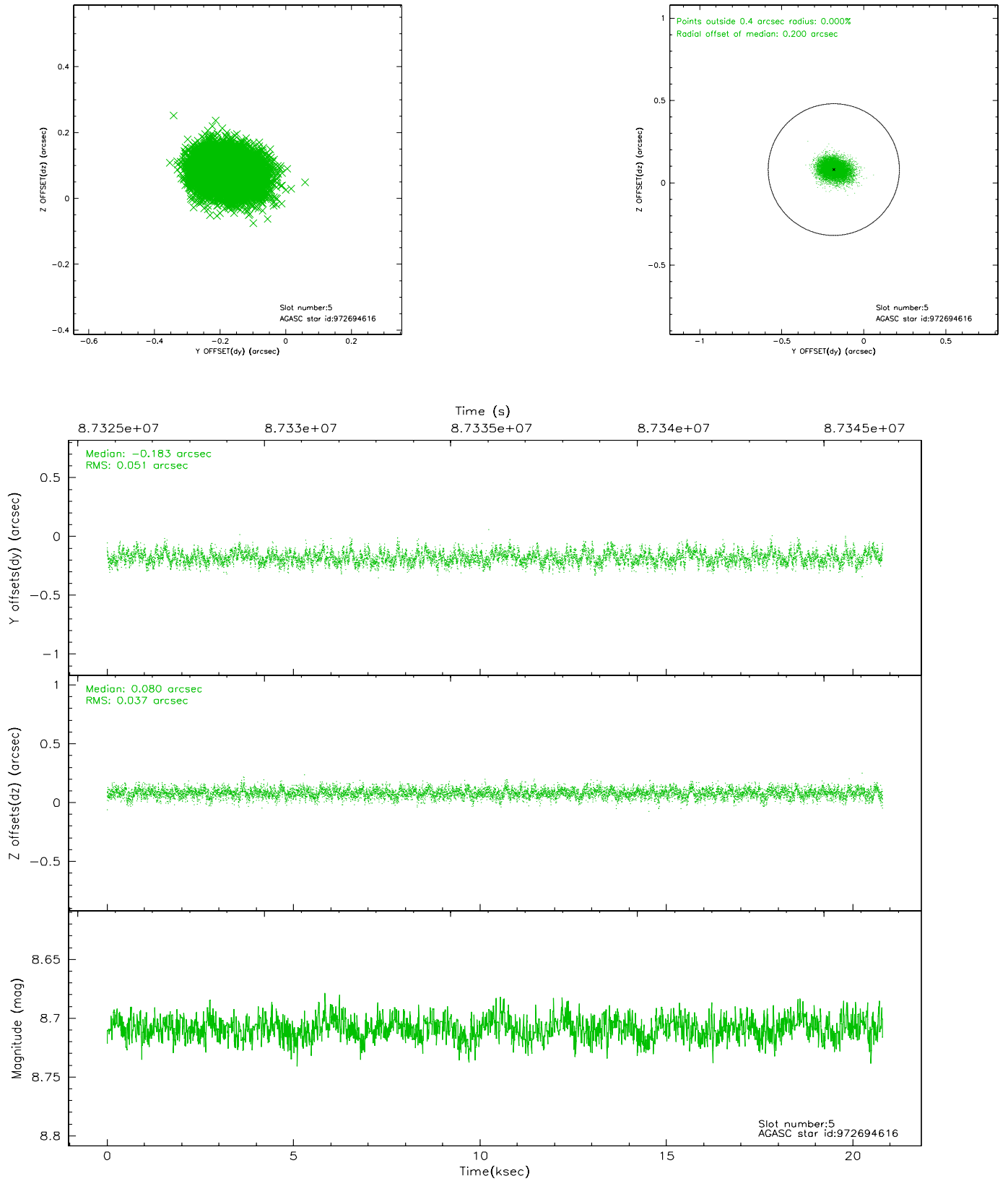
### 2.4.1 Slot 3



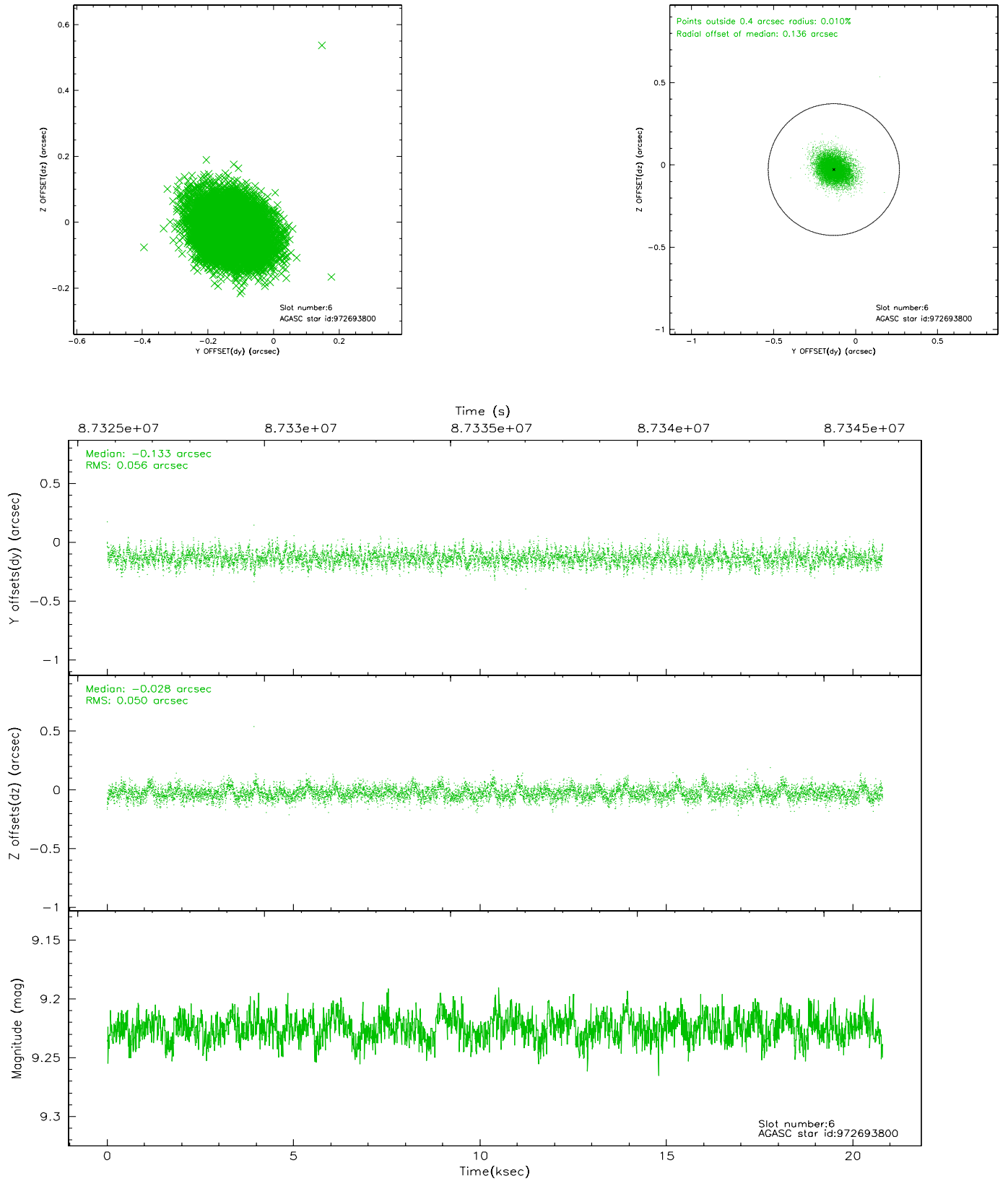
## 2.4.2 Slot 4



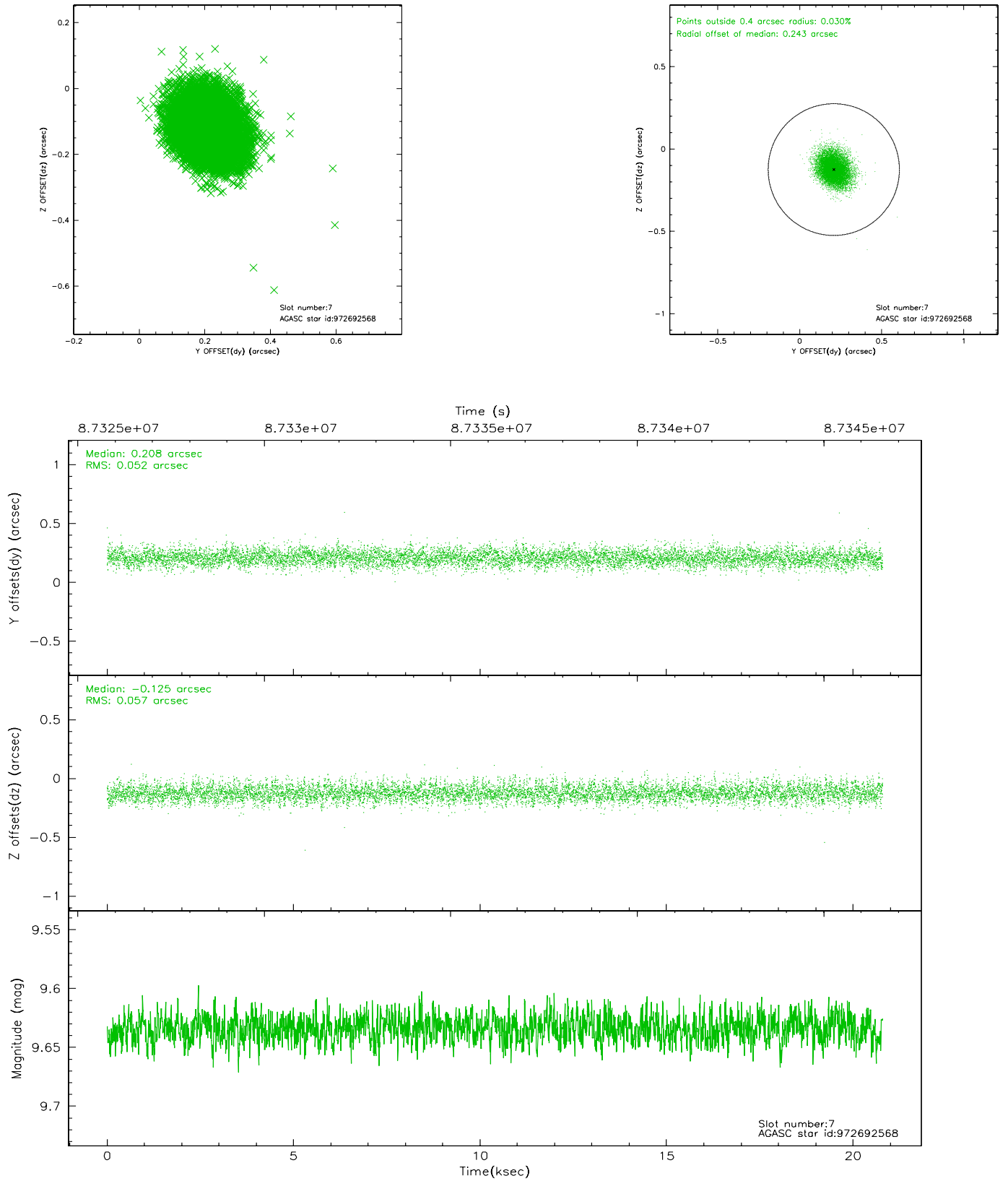
### 2.4.3 Slot 5



## 2.4.4 Slot 6

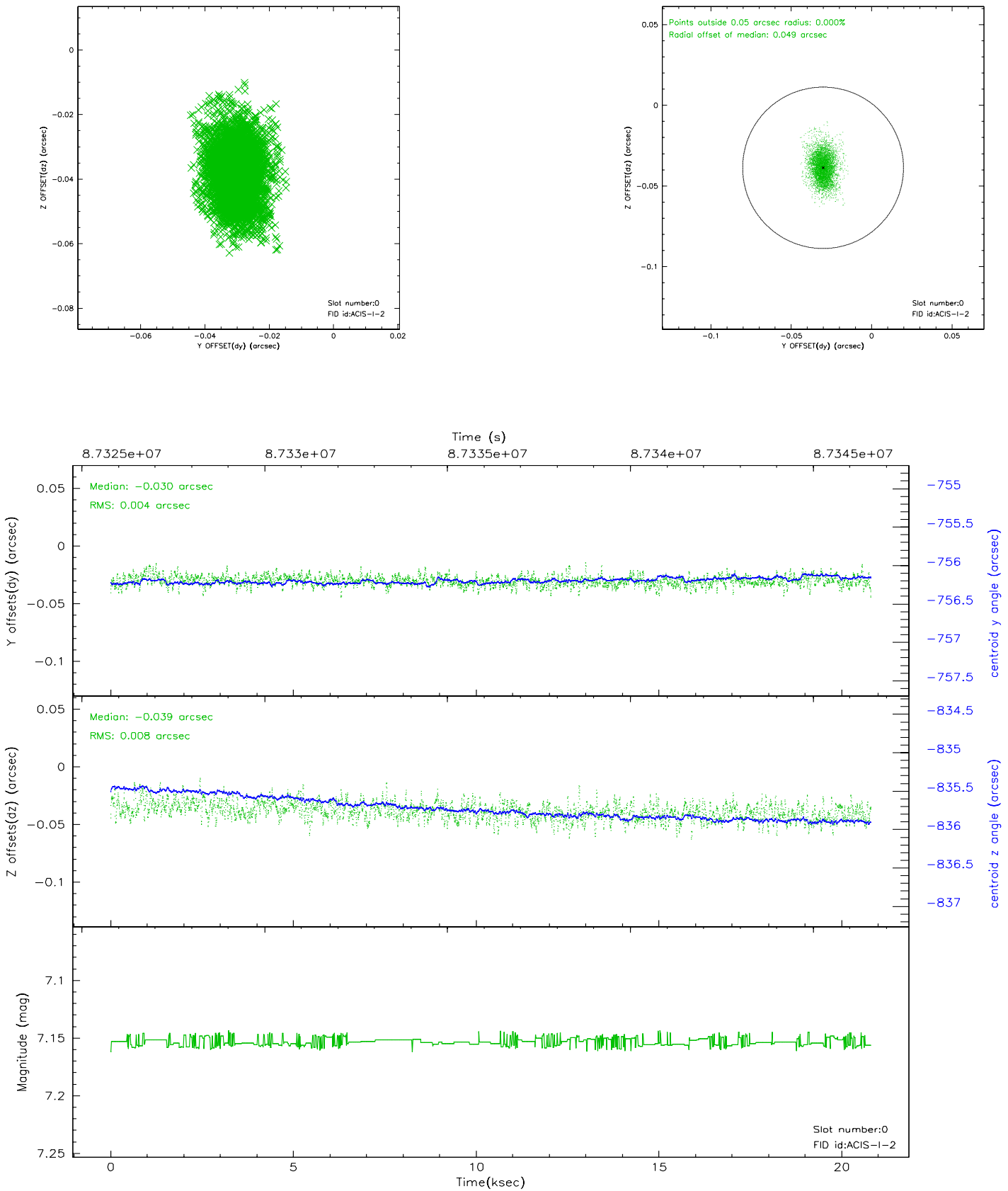


## 2.4.5 Slot 7

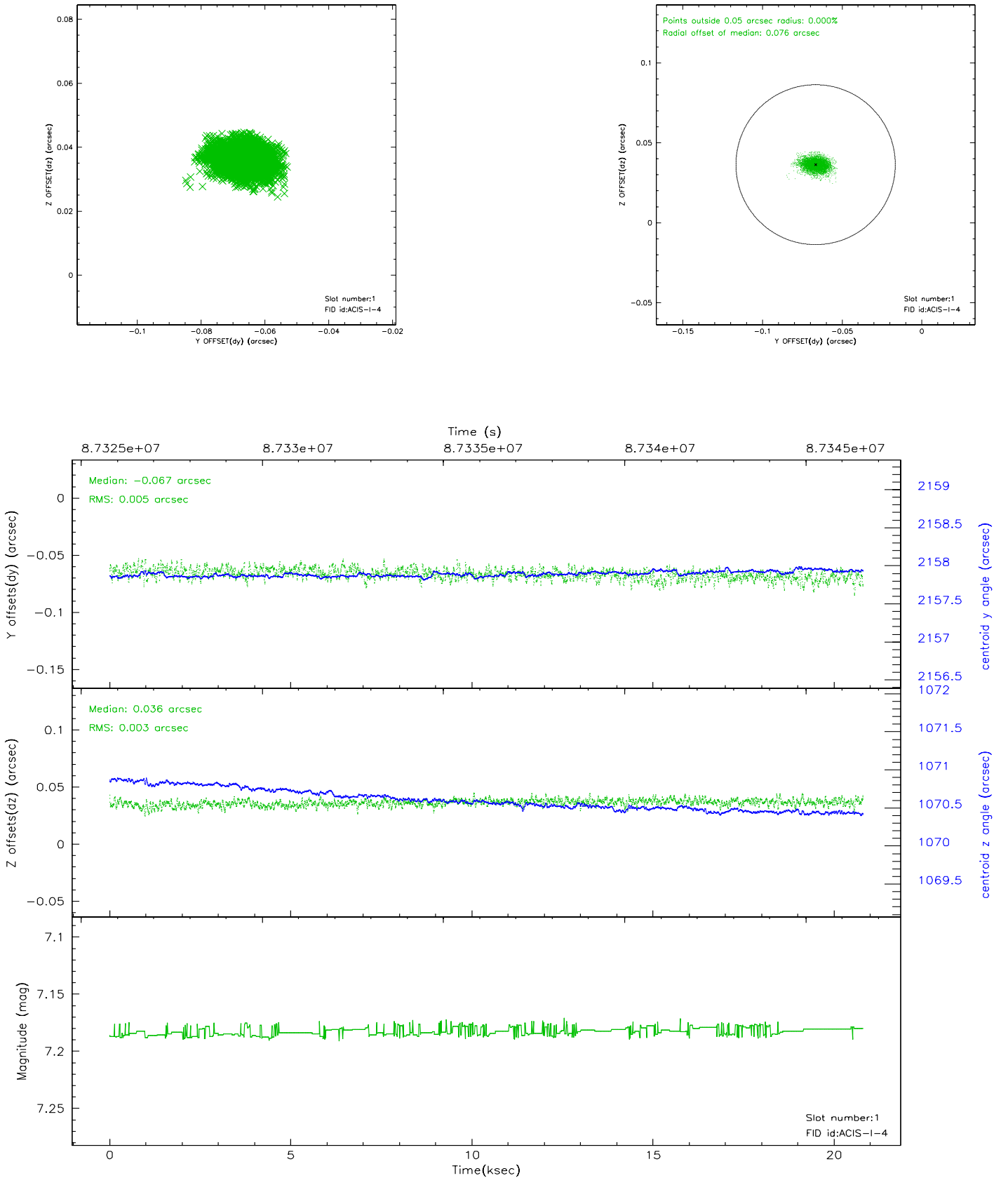


## 2.5 FID Slots

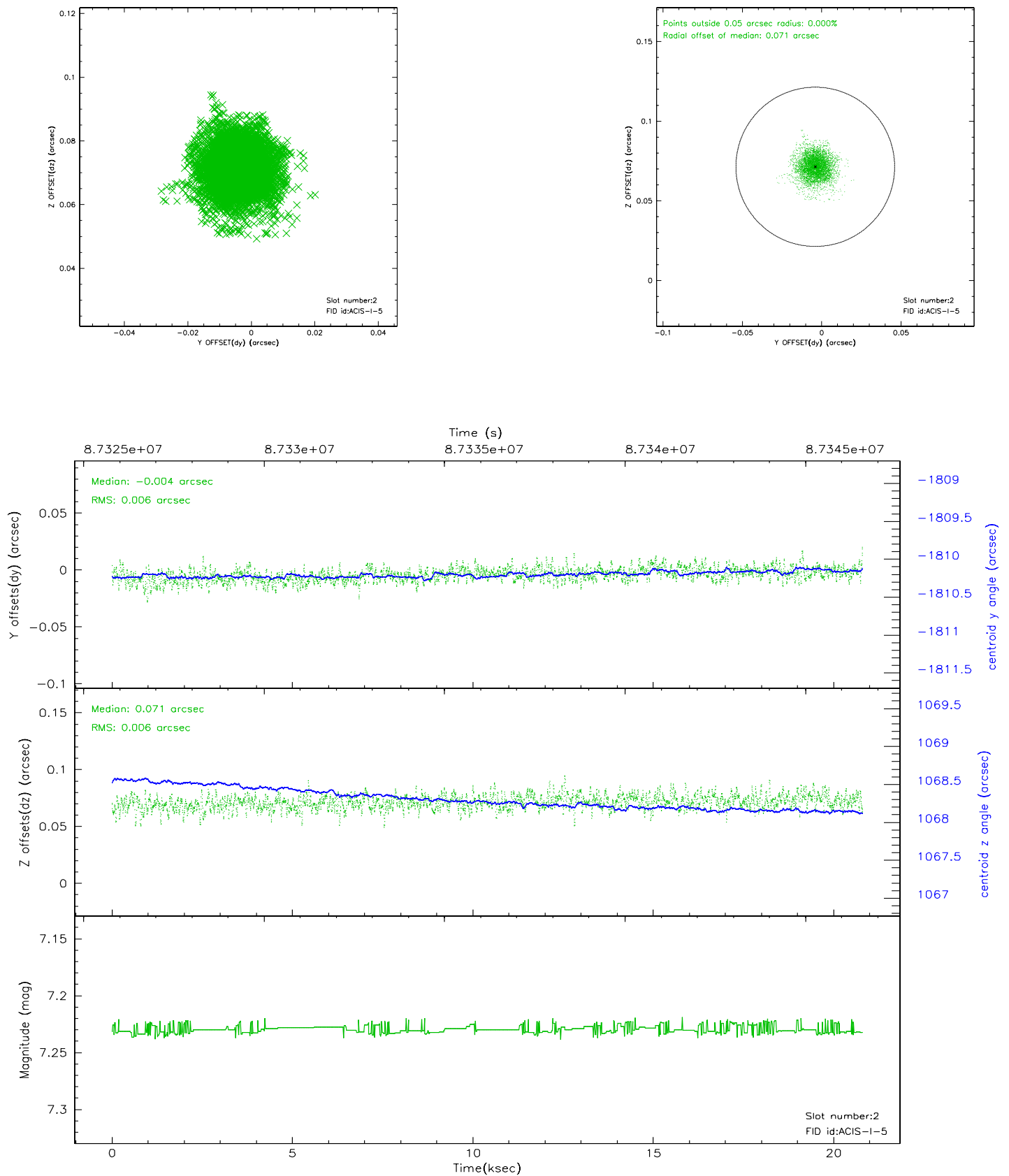
### 2.5.1 Slot 0



## 2.5.2 Slot 1

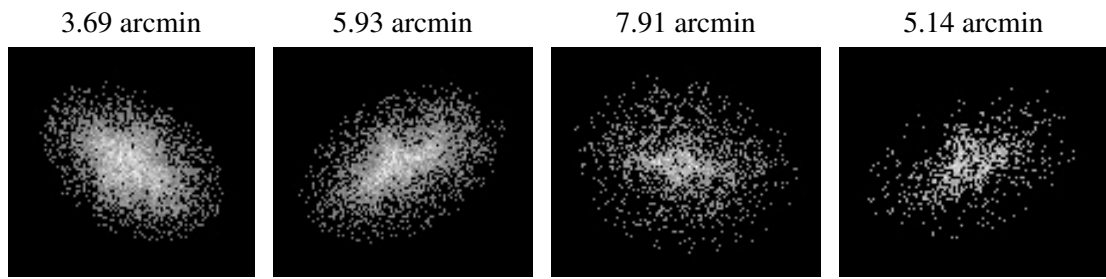


### 2.5.3 Slot 2





### 3 Point Sources



## A Summary

### A.1 Status

V&V Scientist	Beth Sundheim
V&V Date (YYYY-MM-DD)	2007.06.11
V&V Edition	1
V&V Disposition and Status	OK
V&V Charge Time	19.958

### A.2 Comments