

V&V Reference Report

L2 ASCDS Version : 8.4.5

Observation 1839 - L2 Version 3
Chandra X-Ray Center

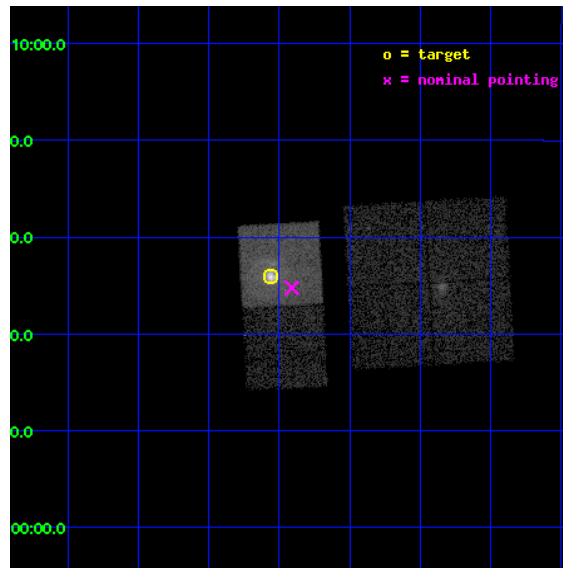
L2 Processing Date : Sep 1 2012

Contents

1	Front	2
2	OBI	3
2.1	OBI	3
2.1.1	Images	3
2.1.2	Bias	3
2.1.3	Parameters	4
2.1.4	Events	4
2.2	Compared Parameters	5
2.3	Aspect	6
2.4	Star Slots	9
2.4.1	Slot 3	9
2.4.2	Slot 4	10
2.4.3	Slot 5	11
2.4.4	Slot 6	12
2.4.5	Slot 7	13
2.5	FID Slots	14
2.5.1	Slot 0	14
2.5.2	Slot 1	15
2.5.3	Slot 2	16
A	Summary	17
A.1	Status	17
A.2	Comments	17

1 Front

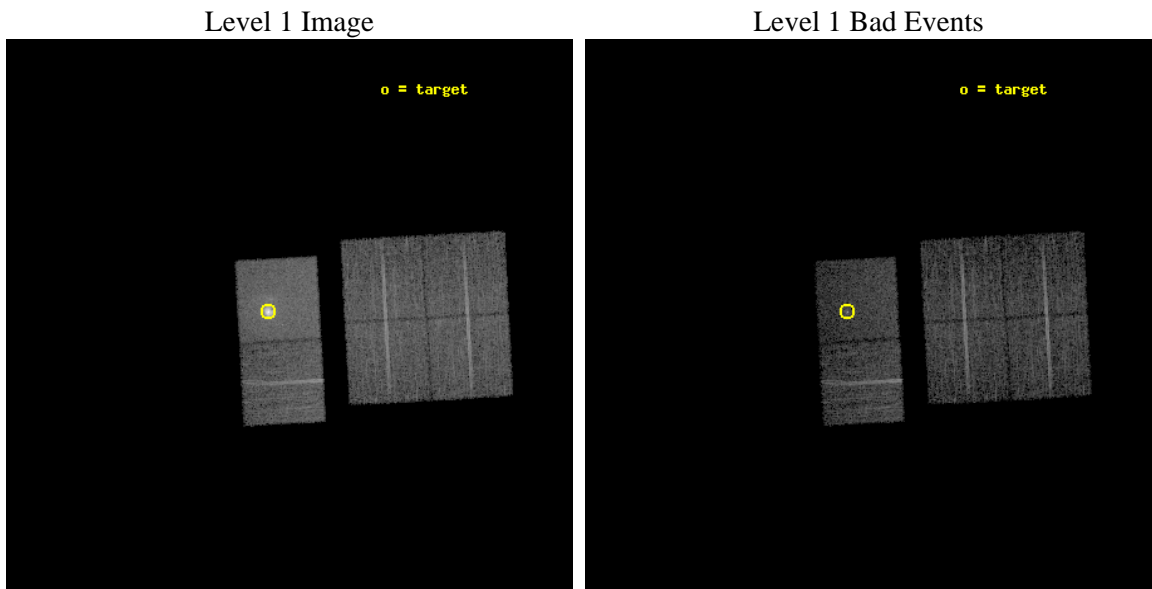
seq_num	590219	Sequence number
obs_id	1839	Observation id
title	HRC RESPONSE TO CONTINUUM SOURCE.	Proposal title
observer	Dr. CXC Calibration	Principal investigator
object	G21.5-0.9 [Chip S3, T=120, Offsets=-1,2,-1]	Source name
dtcycle	0	
cycle	P	events from which exps? Prim/Second/Both
ra_targ	278.389583	Observer's specified target RA [deg]
dec_targ	-10.568528	Observer's specified target Dec [deg]
ra_nom	278.35268036794	Nominal RA [deg]
dec_nom	-10.587408841368	Nominal Dec [deg]
roll_nom	266.82878493964	Nominal Roll [deg]
revision	3	Processing version of data
ontime	7753.6000072062	Sum of GTIs [s]
livetime	7655.4192552575	Livetime [s]
ontime0	7753.6000072062	Sum of GTIs [s]
ontime1	7750.2923543304	Sum of GTIs [s]
ontime2	7753.5743545741	Sum of GTIs [s]
ontime3	7753.6000072062	Sum of GTIs [s]
ontime6	7753.6000072062	Sum of GTIs [s]
ontime7	7753.6000072062	Sum of GTIs [s]
l2events	77416	Number of level 2 events



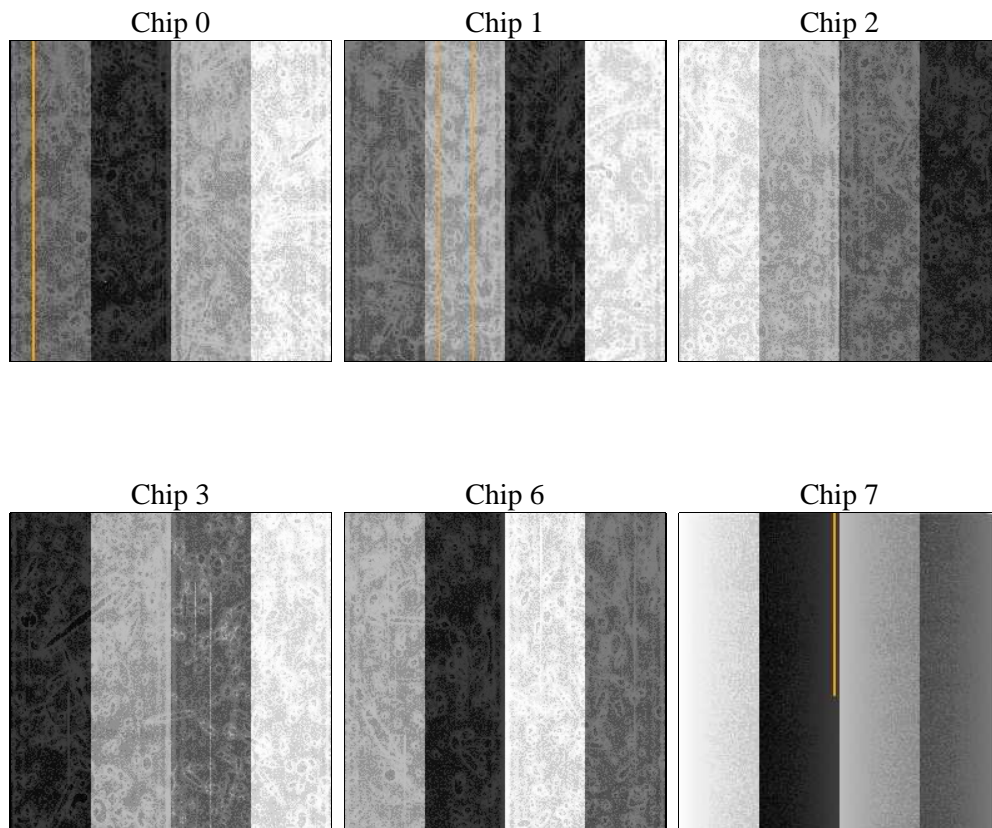
2 OBI

2.1 OBI

2.1.1 Images



2.1.2 Bias



2.1.3 Parameters

obi_num	0	Obi number	sched_exp_time	8000.000000	[s] Scheduled observation exposure time
ascdsver	8.4.5	Processing system revision	ontime	7753.6000072062	Sum of GTIs [s]
caldsver	4.5.1.1	 	ontime0	7753.6000072062	Sum of GTIs [s]
date	2012-09-01T03:51:50	Date and time of file creation	ontime1	7750.2923543304	Sum of GTIs [s]
revision	3	Processing version of data	ontime2	7753.5743545741	Sum of GTIs [s]
			ontime3	7753.6000072062	Sum of GTIs [s]
			ontime6	7753.6000072062	Sum of GTIs [s]
			ontime7	7753.6000072062	Sum of GTIs [s]
			l1events	316943	Number of level 1 events

2.1.4 Events

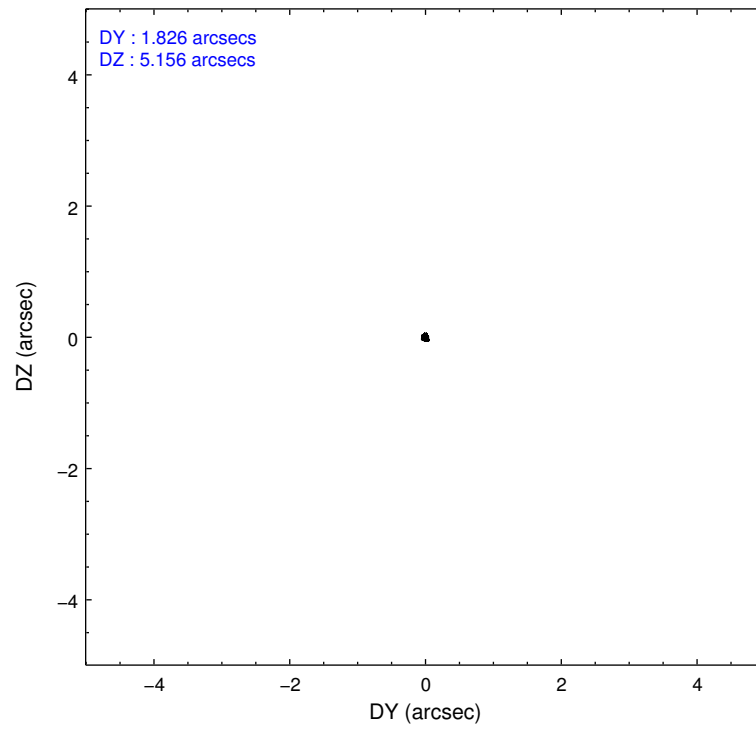
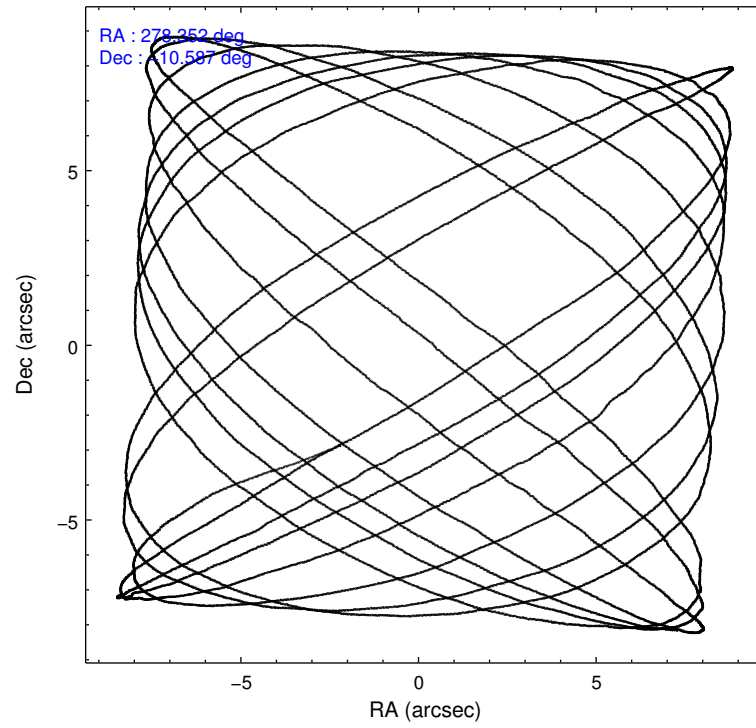
	ccd 0	ccd 1	ccd 2	ccd 3	ccd 6	ccd 7		ccd 0	ccd 1	ccd 2	ccd 3	ccd 6	ccd 7
level 1 events	46703	42894	45587	46303	48041	87415	grade 0 events	2871	2627	2246	2524	2426	8842
rejected events	40419	36914	40365	40721	42436	33947		6%	6%	4%	5%	5%	10%
rejected %	86%	86%	88%	87%	88%	38%	grade 1 events	23	17	23	19	20	100
								0%	0%	0%	0%	0%	0%
							grade 2 events	1269	1144	1097	1054	1085	12151
								2%	2%	2%	2%	2%	13%
							grade 3 events	578	606	542	548	542	5615
								1%	1%	1%	1%	1%	6%
							grade 4 events	538	569	480	537	535	5641
								1%	1%	1%	1%	1%	6%
							grade 5 events	1575	1719	1545	1729	1902	5919
								3%	4%	3%	3%	3%	6%
							grade 6 events	1033	1041	860	925	1023	21257
								2%	2%	1%	1%	2%	24%
							grade 7 events	38816	35171	38794	38967	40508	27890
								83%	81%	85%	84%	84%	31%

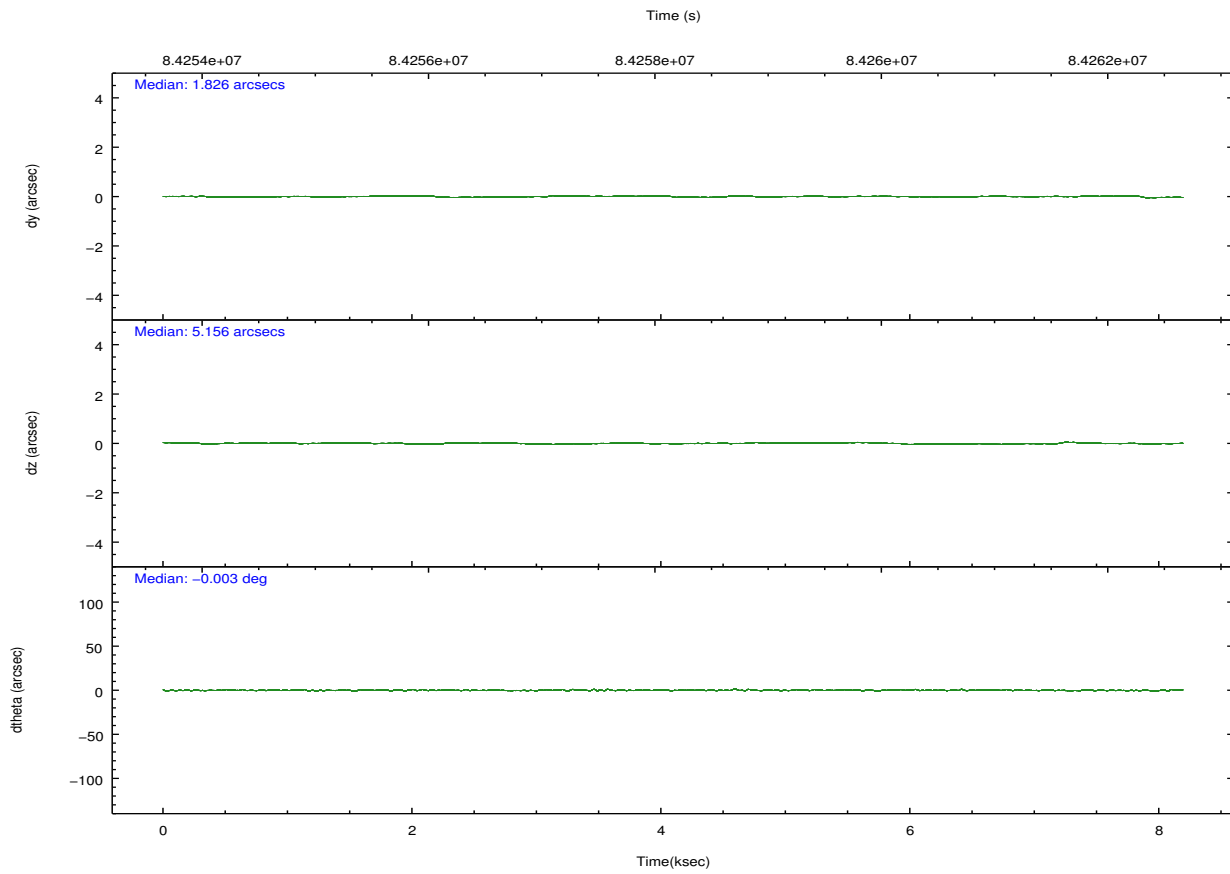
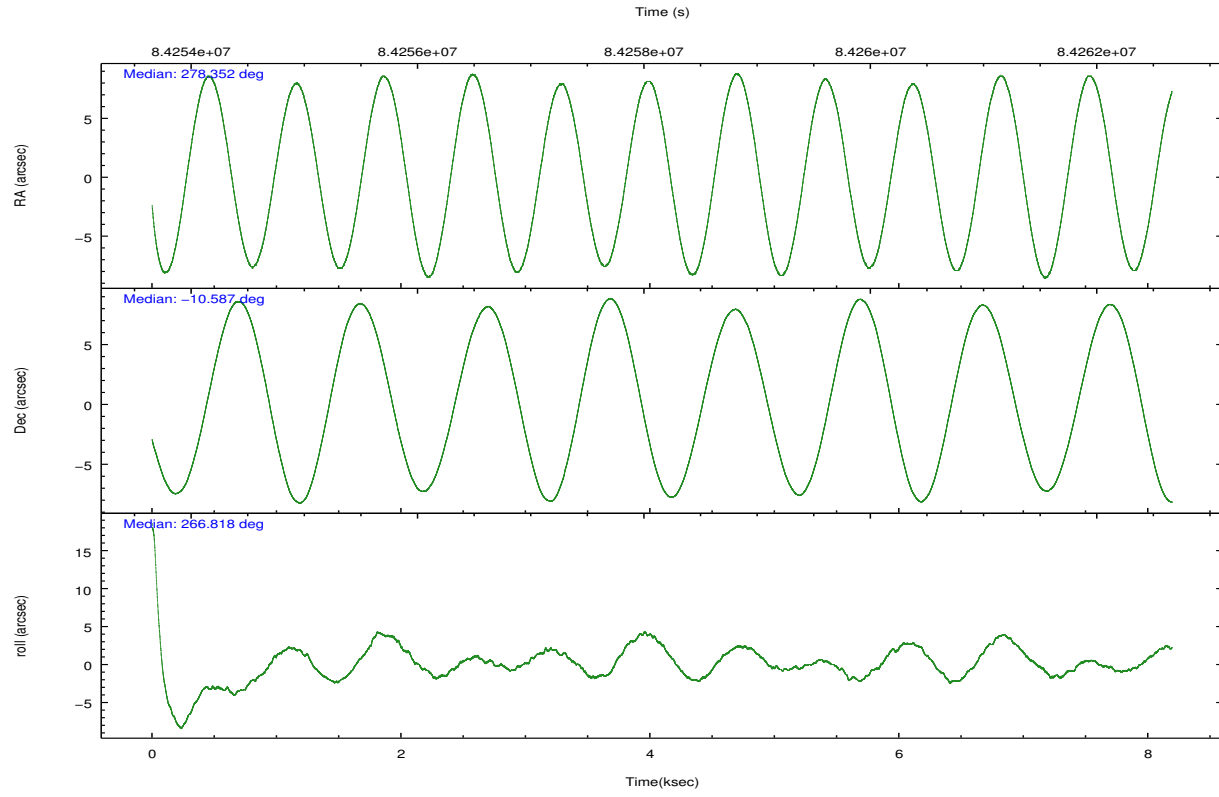
2.2 Compared Parameters

Parameter	Planned	Actual
Instrument	ACIS	ACIS
Detector	ACIS-012367	ACIS-012367
Grating	NONE	NONE
Data mode	FAINT	FAINT
Observation mode	POINTING	POINTING
[deg] Pointing RA	278.339979	278.3526803679384
[deg] Pointing Dec	-10.563033	-10.5874088413677
[deg] Pointing Roll	266.669799	266.828784939639
[mm] SIM focus pos	-0.684267	-0.6828225247311905
[mm] SIM defocus	0	0.001444936568705701
[mm] SIM translation stage pos	-193.059523	-193.0566717996815
[mm] SIM translation stage offset	2.927	2.924149216673669
[s] Observation start time (MET)	84254258.184000	84253882.042861
Observation start date	2000-09-02T03:56:34	2000-09-02T03:51:22
[s] Observation end time (MET)	84262258.184000	84262392.10568
Observation end date	2000-09-02T06:09:54	2000-09-02T06:13:12
Read mode	TIMED	TIMED

Parameter	Planned	Actual
Obspar format version number	7	7
Obspar file type	PREDICTED	ACTUAL
Obspar update status	NONE	UPDATED
Number of optional ACIS chips dropped	0	0
On-chip summing requested	N	N
Subarray requested	NONE	NONE
Alternating exposures requested	N	N
[s] Primary exposure time	0.000000	3.2

2.3 Aspect



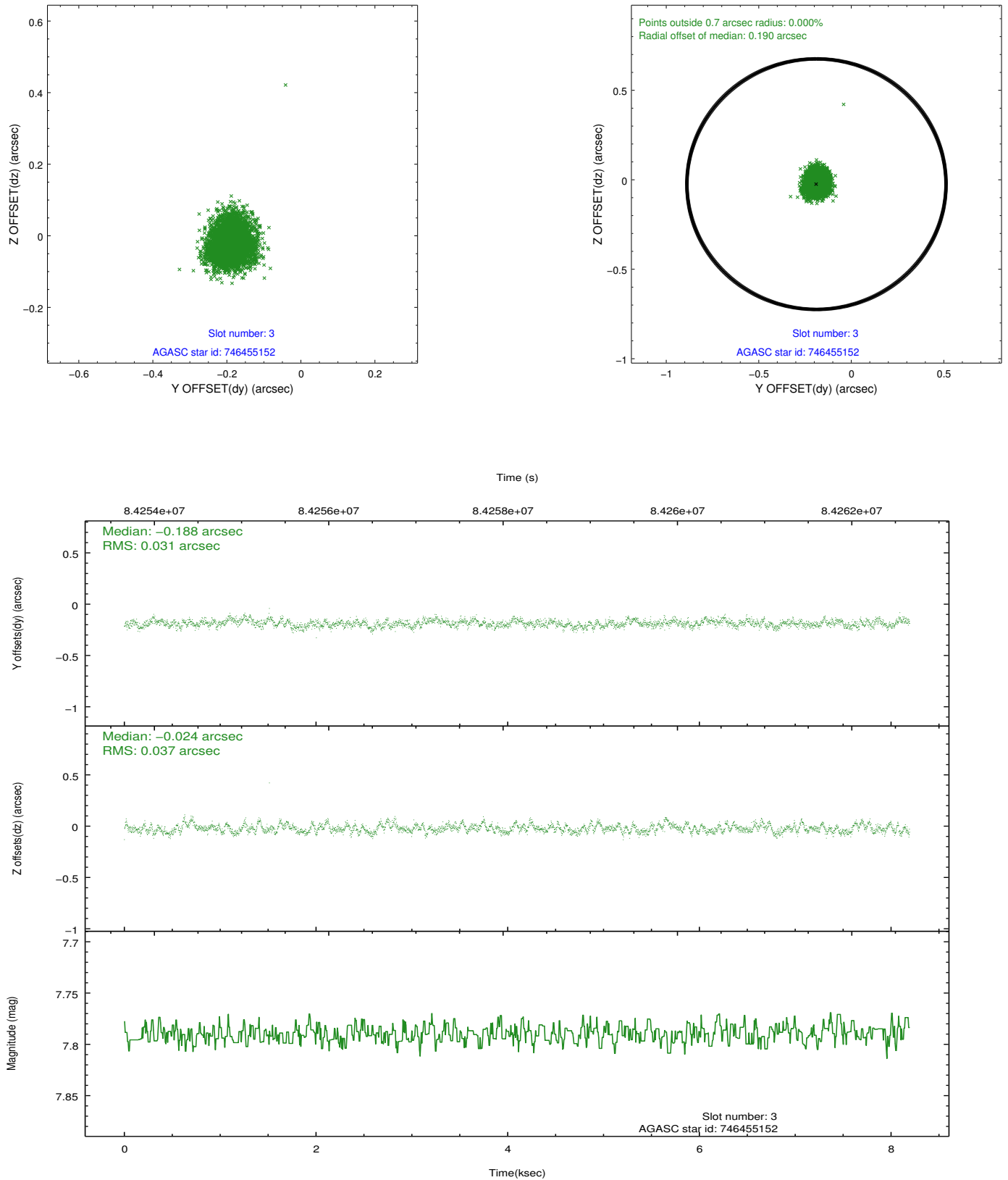


Slot Statistics

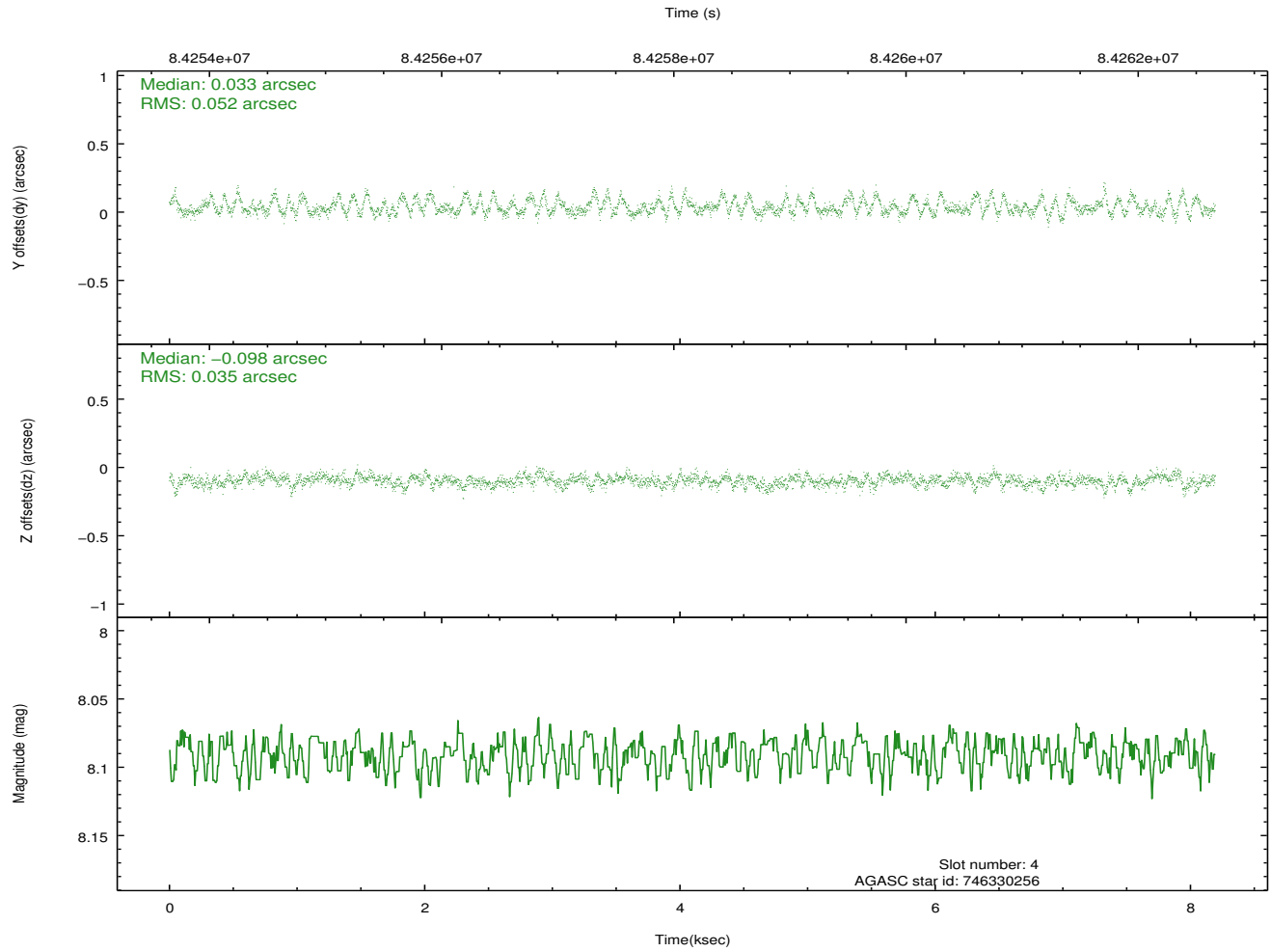
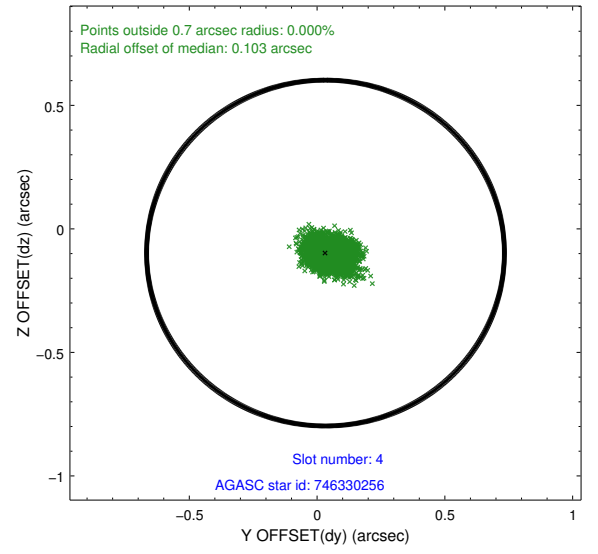
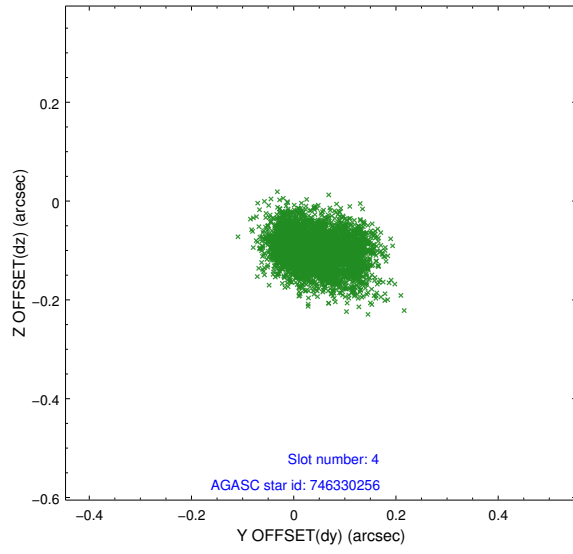
slot	status	id	mag	n_pts	med_dy	med_dz	dr1	dr2	ra	dec	mean_y	mean_z
0	FID	ACIS-S-2	7.11	1999	-0.043	0.023	0.007	0.011	0.000000	0.000000	-754.69	-1666.12
1	FID	ACIS-S-4	7.22	1999	-0.013	0.015	0.006	0.011	0.000000	0.000000	2158.34	241.64
2	FID	ACIS-S-5	7.24	1999	0.025	-0.029	0.006	0.011	0.000000	0.000000	-1806.56	236.10
3	GUIDE	746455152	7.79	3997	-0.188	-0.024	0.051	0.082	278.447893	-9.976732	-2128.83	259.72
4	GUIDE	746330256	8.09	3997	0.033	-0.098	0.066	0.112	277.634401	-10.863955	1229.93	-2426.34
5	GUIDE	746462456	8.38	3994	-0.017	0.182	0.060	0.097	278.652171	-10.530173	-180.86	1096.58
6	GUIDE	746455112	8.92	3998	0.171	-0.165	0.075	0.121	278.266531	-10.703234	519.83	-229.06
7	GUIDE	746461728	9.79	3995	-0.009	0.106	0.109	0.174	278.986921	-10.530755	-246.27	2280.04

2.4 Star Slots

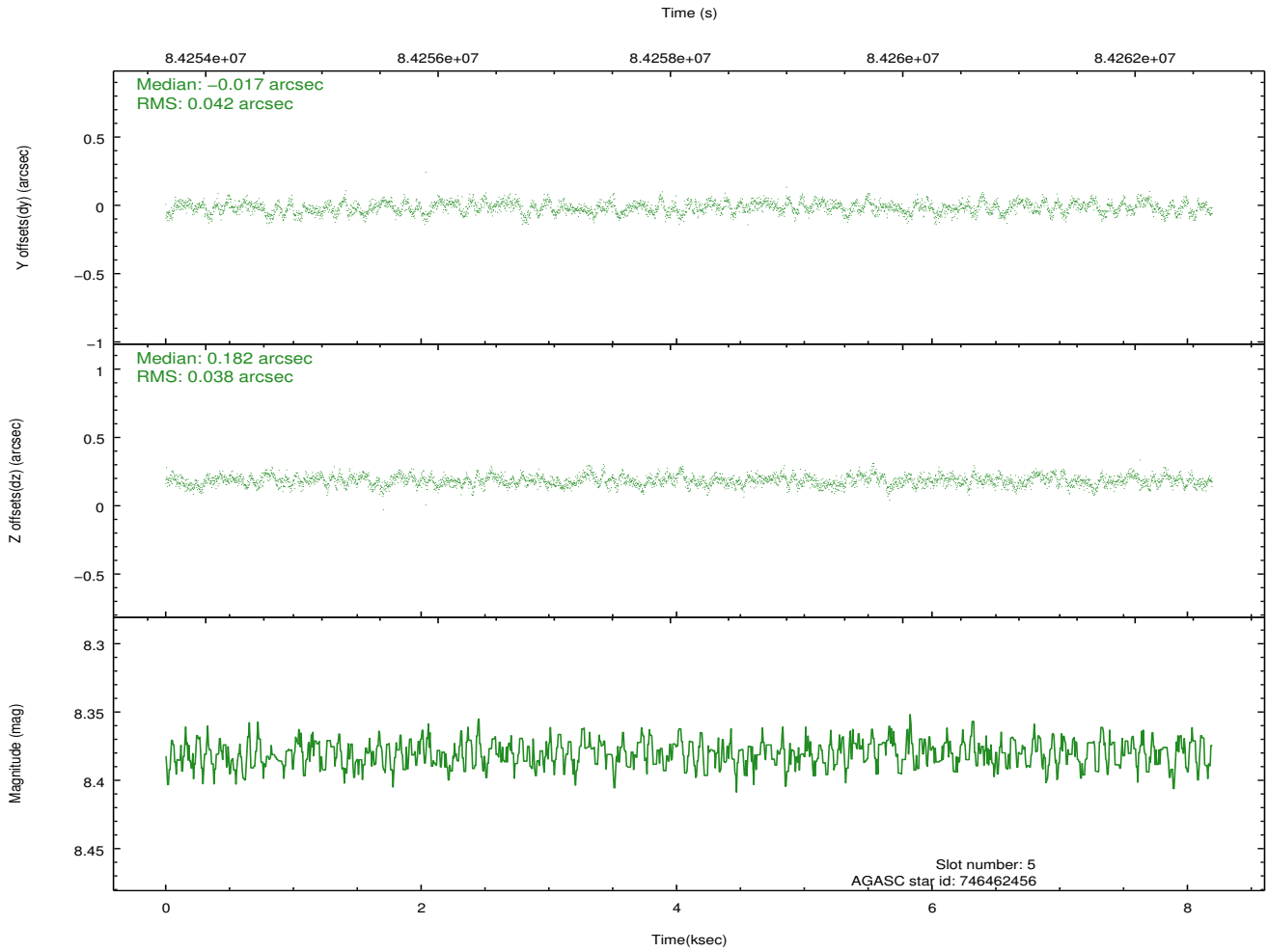
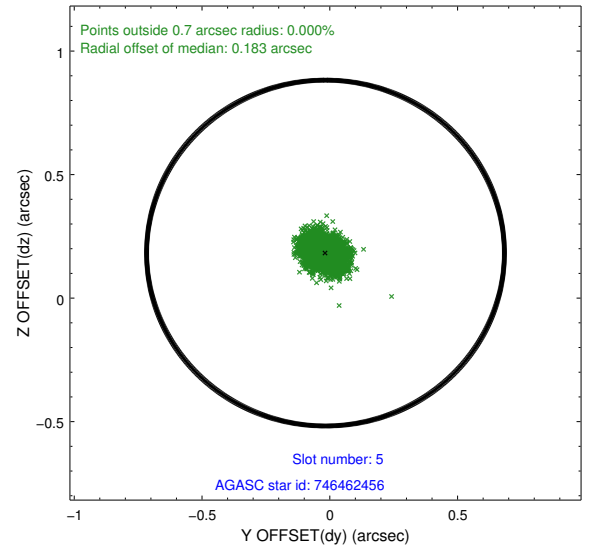
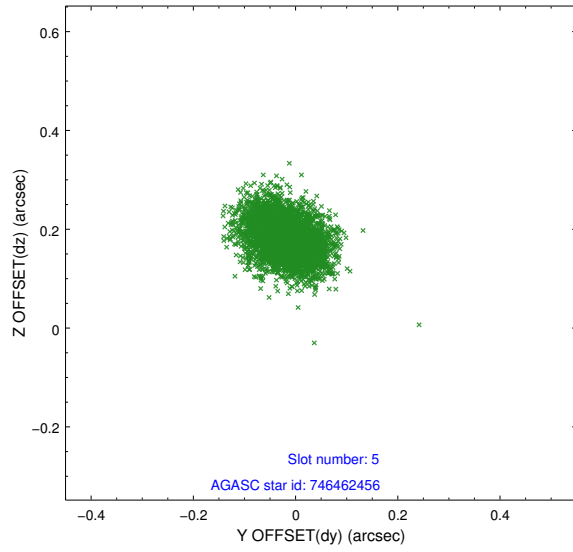
2.4.1 Slot 3



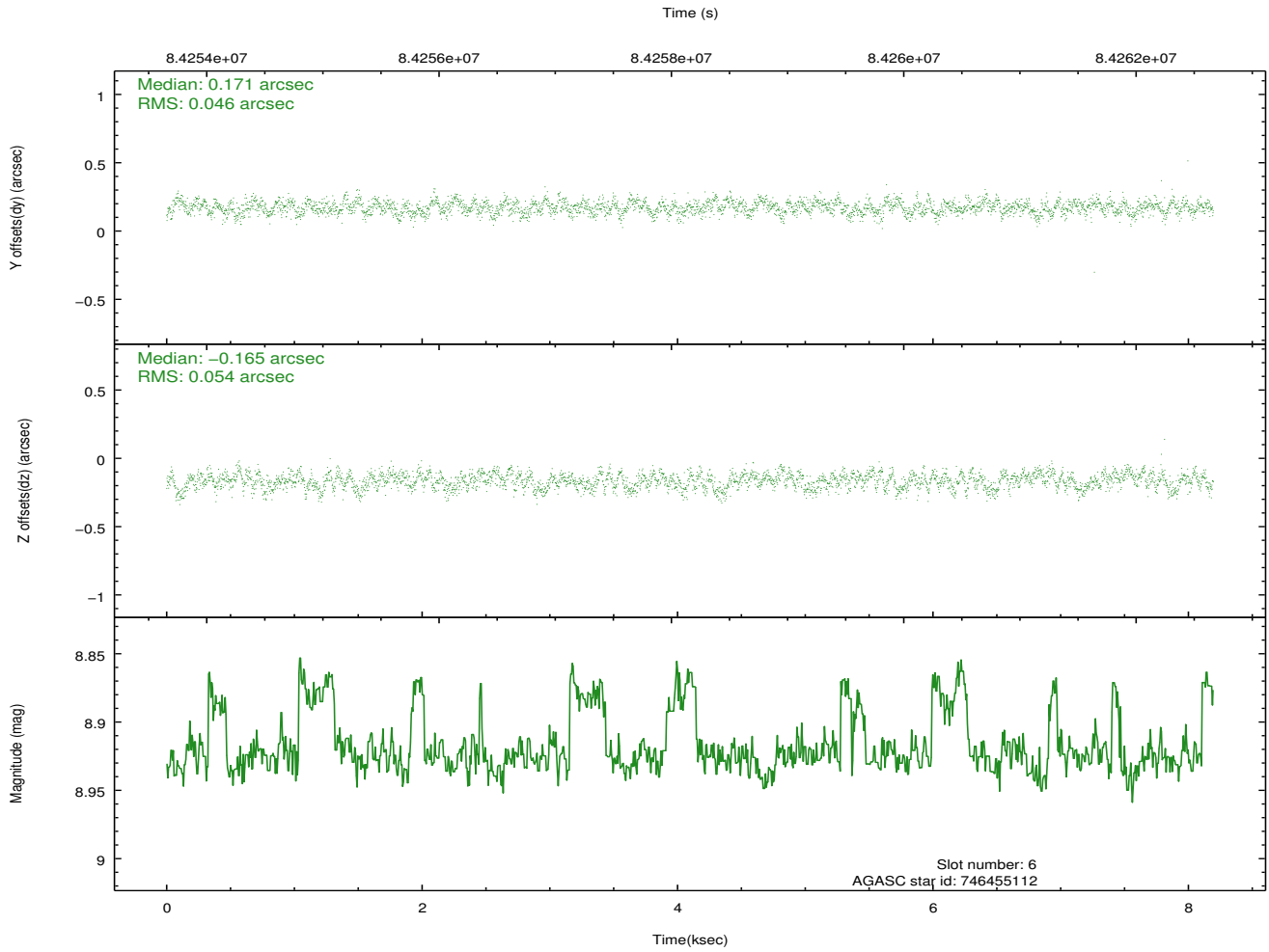
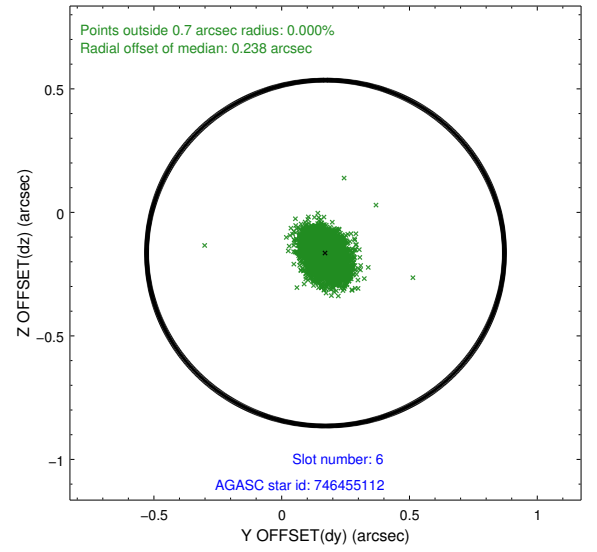
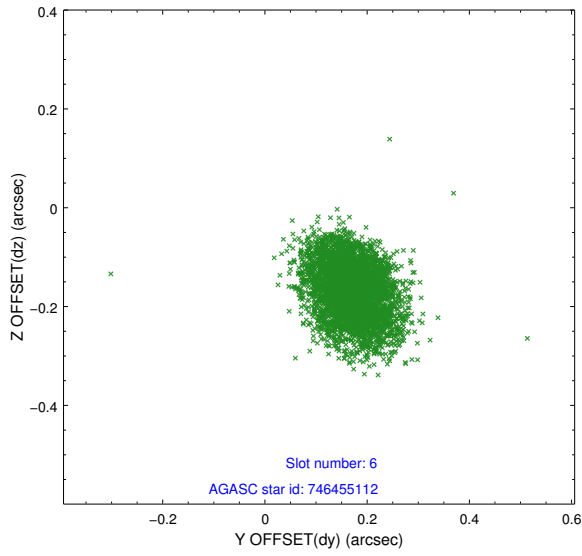
2.4.2 Slot 4



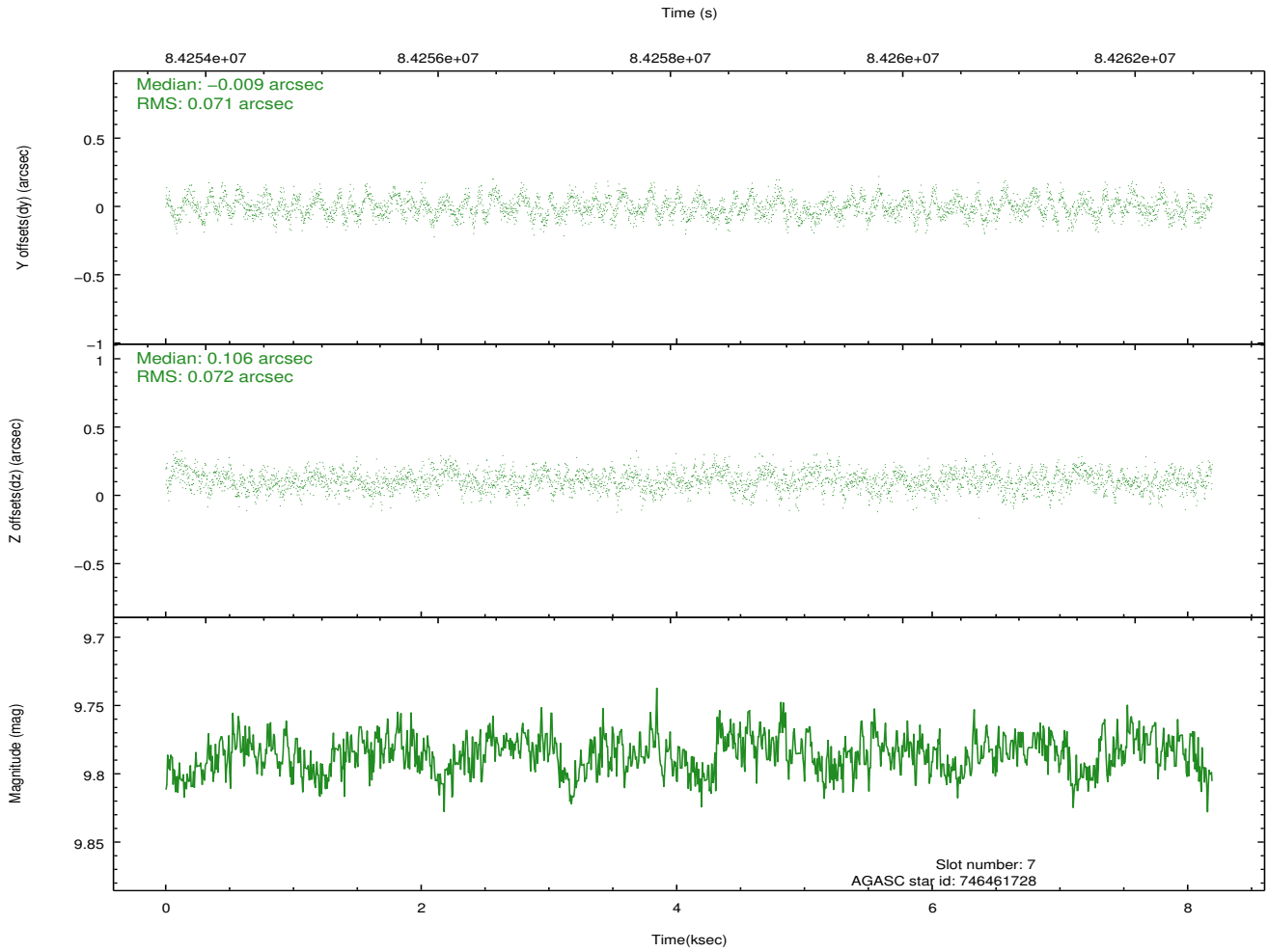
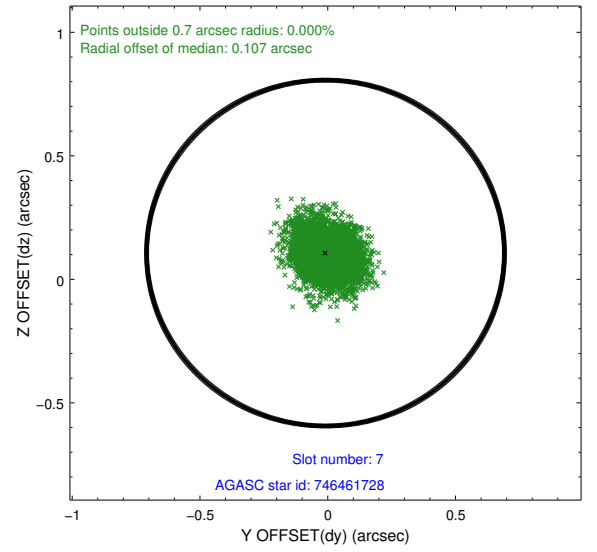
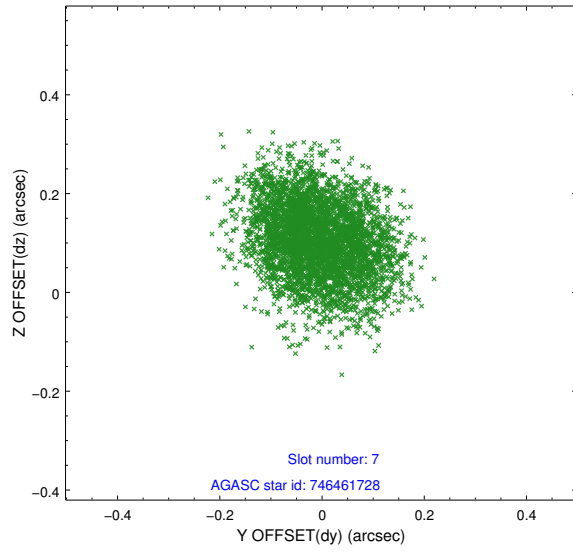
2.4.3 Slot 5



2.4.4 Slot 6

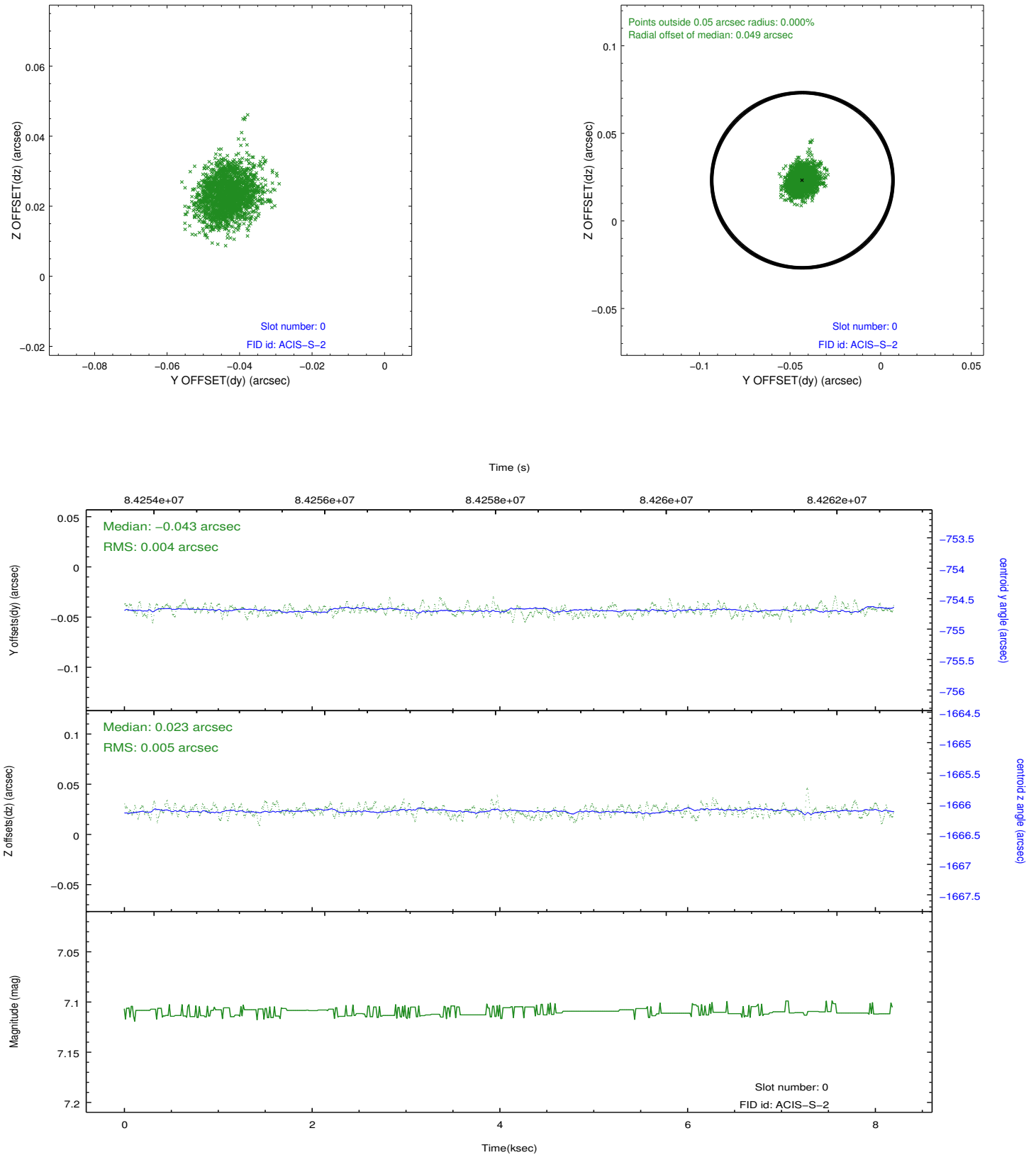


2.4.5 Slot 7

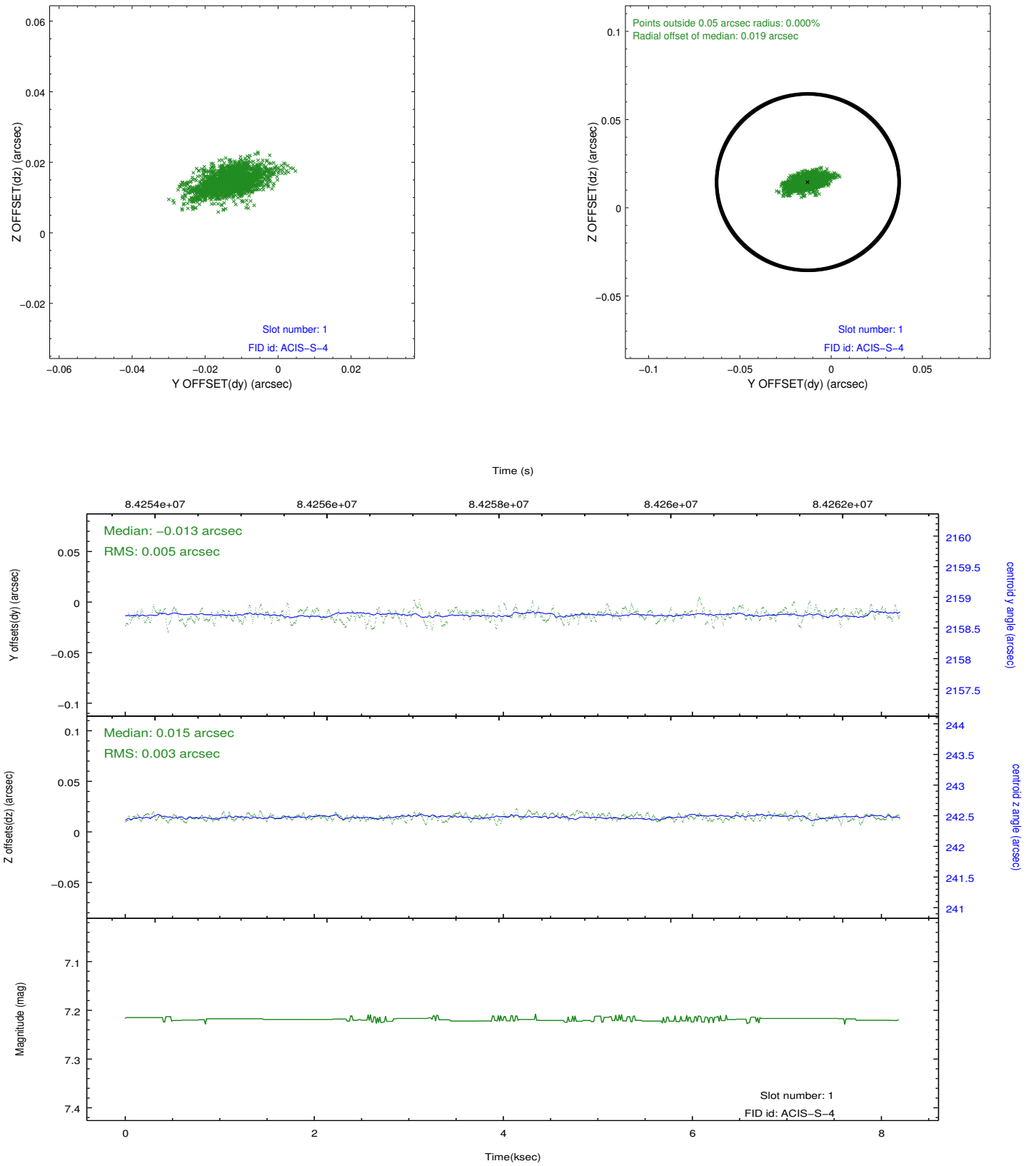


2.5 FID Slots

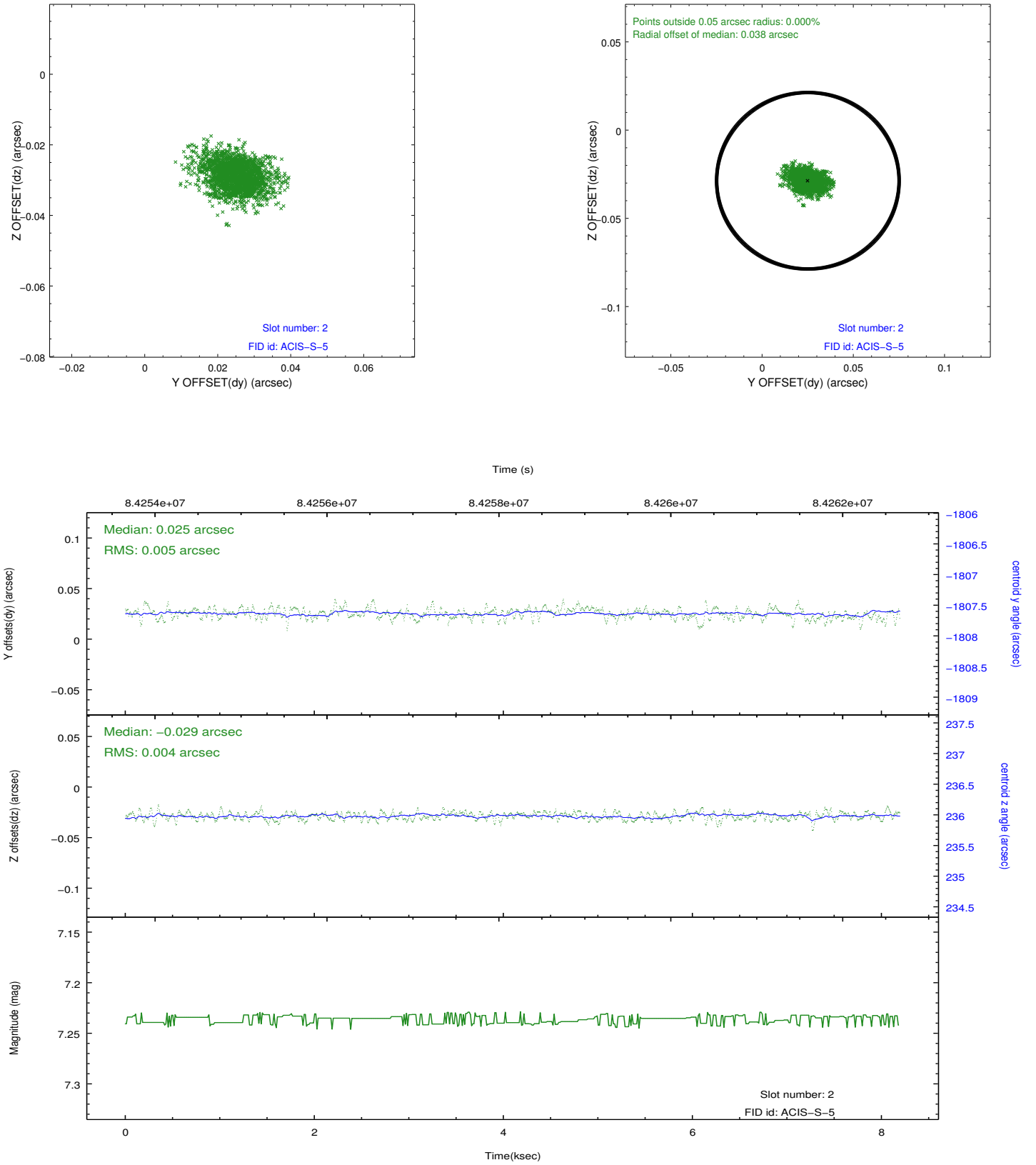
2.5.1 Slot 0



2.5.2 Slot 1



2.5.3 Slot 2



A Summary

A.1 Status

V&V Scientist	Jen Lauer
V&V Date (YYYY-MM-DD)	2012.09.06
V&V Edition	1
V&V Disposition and Status	OK
V&V Charge Time	7.756

A.2 Comments