

V&V Reference Report

L2 ASCDS Version : 10.4.2.1

Observation 17339 - L2 Version 1
Chandra X-Ray Center

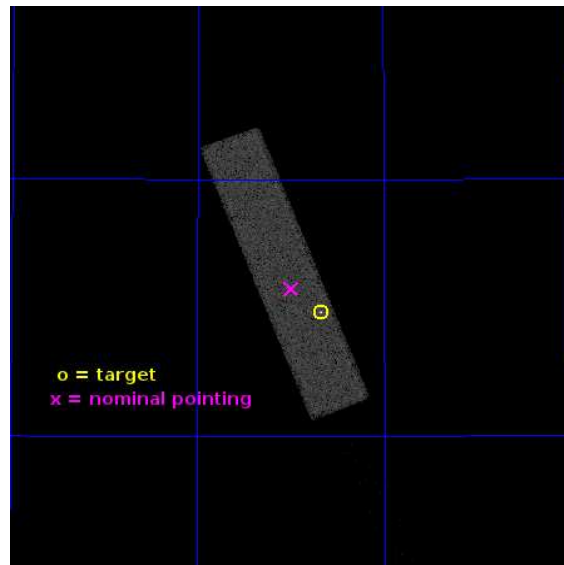
L2 Processing Date : Oct 20 2015

Contents

1	Front	2
2	OBI	3
2.1	OBI	3
2.1.1	Images	3
2.1.2	Parameters	4
2.1.3	Events	4
2.2	Compared Parameters	5
2.3	Aspect	6
2.4	Star Slots	9
2.4.1	Slot 3	9
2.4.2	Slot 4	10
2.4.3	Slot 5	11
2.4.4	Slot 6	12
2.4.5	Slot 7	13
2.5	FID Slots	14
2.5.1	Slot 0	14
2.5.2	Slot 1	15
2.5.3	Slot 2	16
A	Summary	17
A.1	Status	17
A.2	Comments	17

1 Front

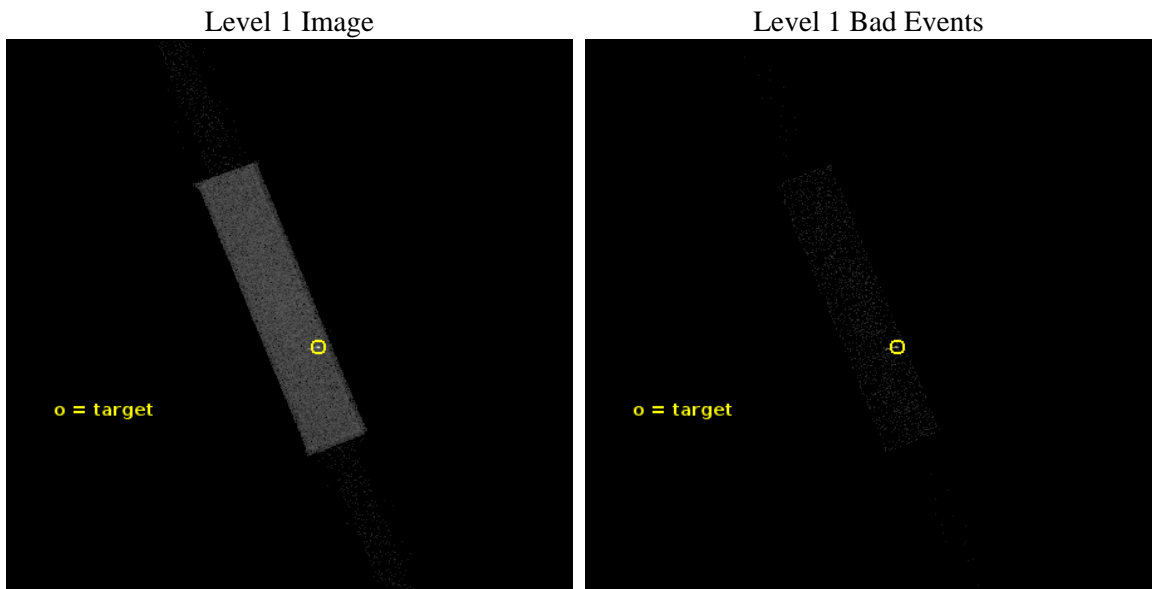
seq_num	291212	Sequence number
obs_id	17339	Observation id
title	AO-16 Calibration Observations to Monitor the Spatial Variations in the HRC-S Gain	Proposal title
observer	Dr. CXC Calibration	Principal investigator
object	ArLac	Source name
ra_targ	332.17	Observer's specified target RA [deg]
dec_targ	45.742306	Observer's specified target Dec [deg]
ra_nom	332.24769671905	Nominal RA [deg]
dec_nom	45.787542726053	Nominal Dec [deg]
roll_nom	248.37549367738	Nominal Roll [deg]
revision	1	Processing version of data
ontime	1153.3813154697	[s]
livetime	1146.3218873124	Ontime multiplied by DTCOR
l2events	53194	Number of level 2 events



2 OBI

2.1 OBI

2.1.1 Images



2.1.2 Parameters

obi_num	1	Obi number	sched_exp_time	1000.000000	[s] Scheduled observation exposure time
ascdsver	10.4.2.1	Processing system revision	ontime	1153.3813154697	[s]
caldsver	4.6.10a	 	l1events	82698	Number of level 1 events
date	2015-10-20T22:43:38	Date and time of file creation			
revision	1	Processing version of data			

2.1.3 Events

Level 1 Events

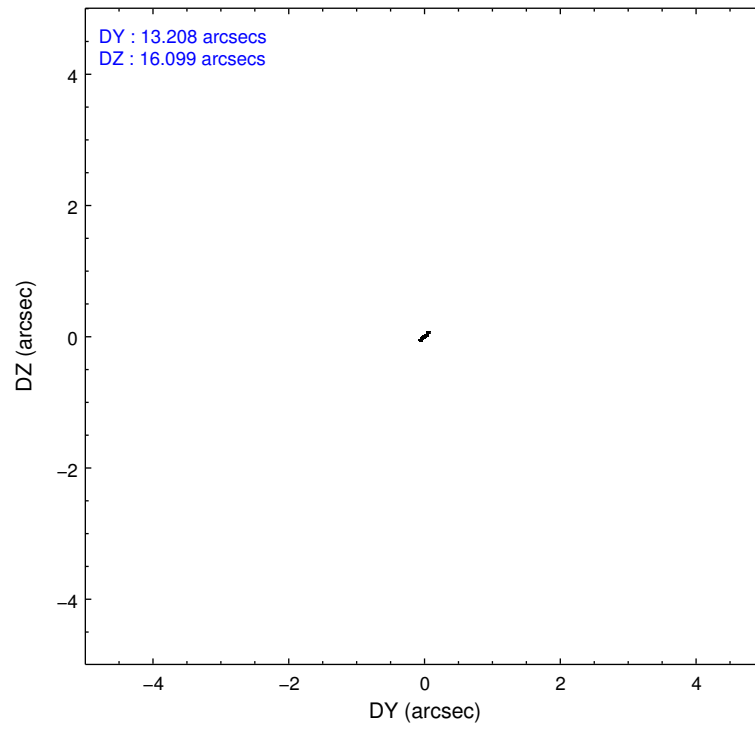
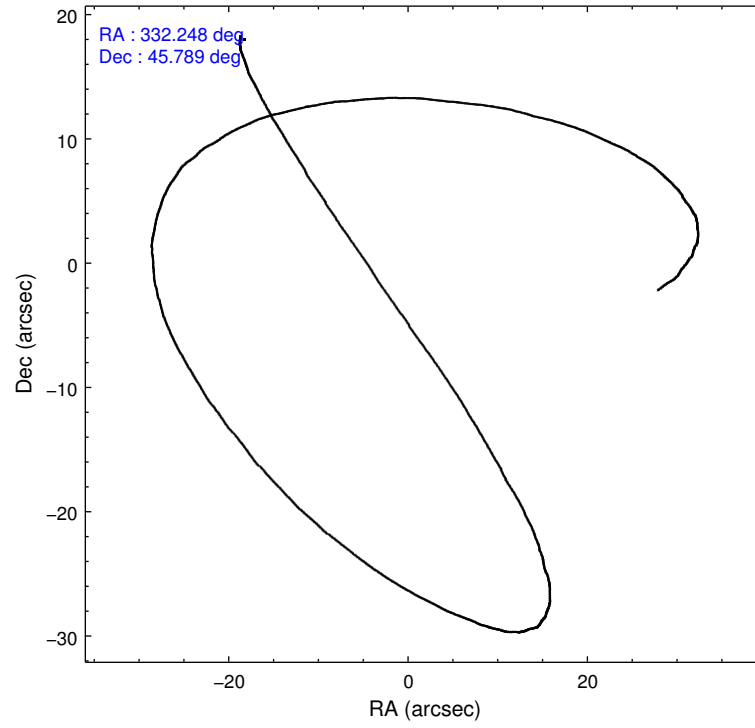
	segment 1	segment 2	segment 3
level 1 events	687	81391	620
rejected events	687	18596	594
rejected %	100%	22%	95%

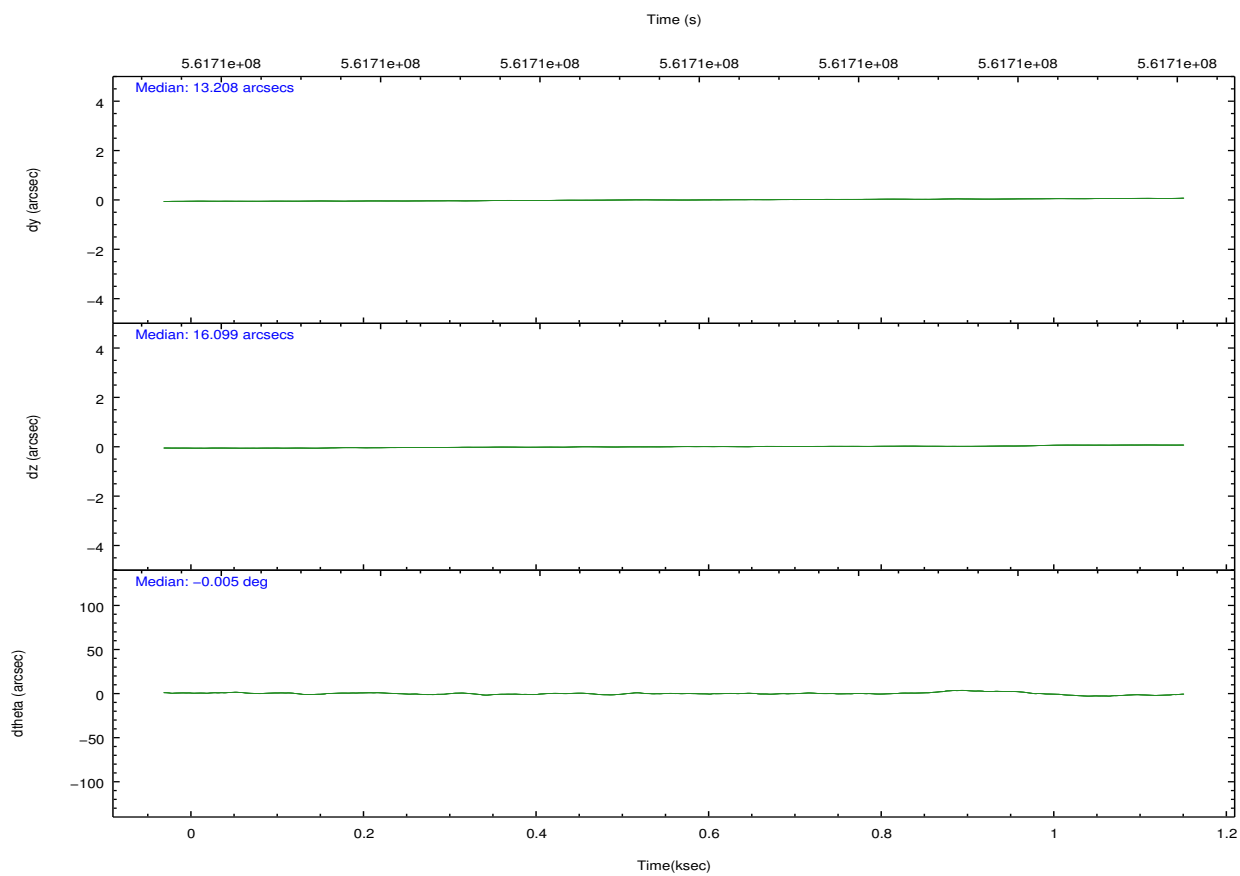
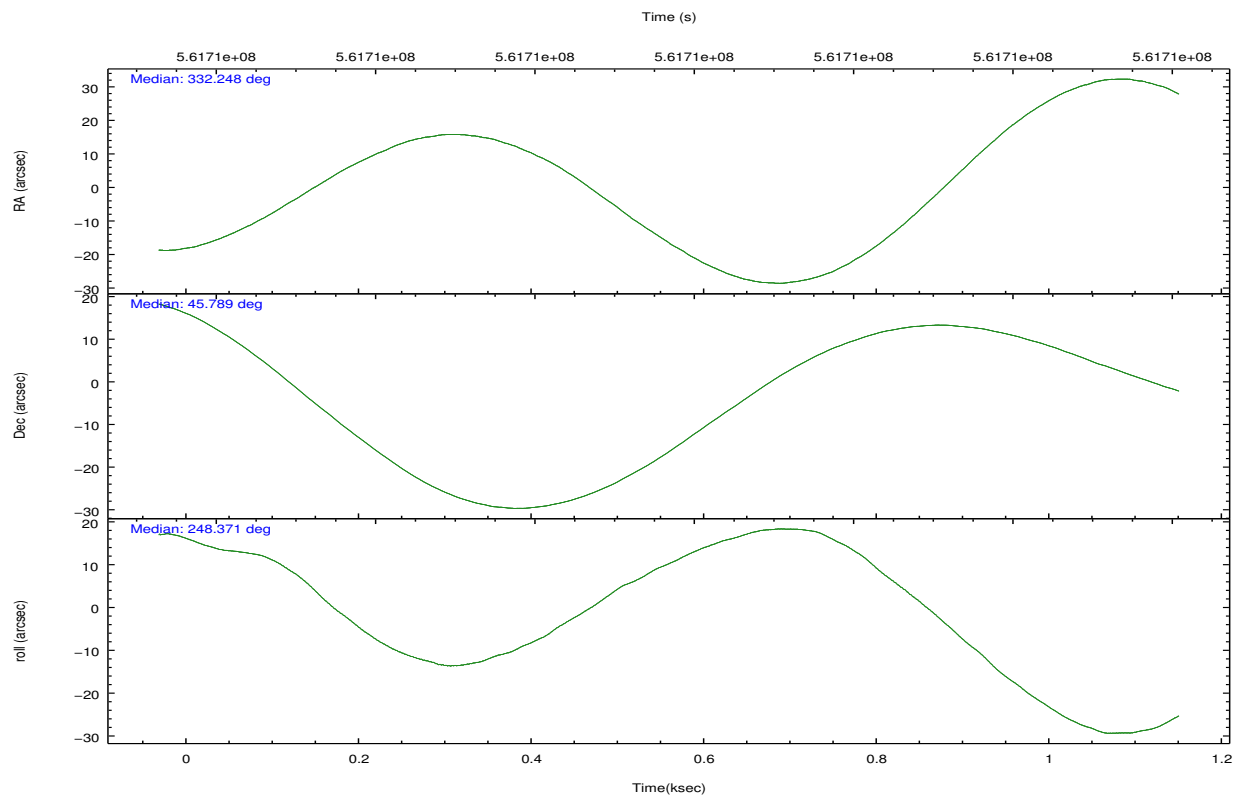
2.2 Compared Parameters

Parameter	Planned	Actual
Instrument	HRC	HRC
Detector	HRC-S	HRC-S
Grating	NONE	NONE
Data mode	OBSERVING	OBSERVING
Observation mode	POINTING	POINTING
[deg] Pointing RA	332.239056	332.2476967190471
[deg] Pointing Dec	45.815710	45.78754272605254
[deg] Pointing Roll	248.314324	248.3754936773767
[mm] SIM focus pos	-1.533336	-1.526339935833849
[mm] SIM defocus	7.710433287538843e-07	0.006996703570447904
[mm] SIM translation stage pos	250.455976	250.466033080201
[mm] SIM translation stage offset	0	-0.01005468664627074
[s] Observation start time (MET)	561710743.184000	561710367.12142
Observation start date	2015-10-20T06:44:35	2015-10-20T06:39:27
[s] Observation end time (MET)	561711743.184000	561711876.9464999
Observation end date	2015-10-20T07:01:15	2015-10-20T07:04:36

Parameter	Planned	Actual
Obspar format version number	7	7
Obspar file type	PREDICTED	ACTUAL
Obspar update status	NONE	UPDATED

2.3 Aspect



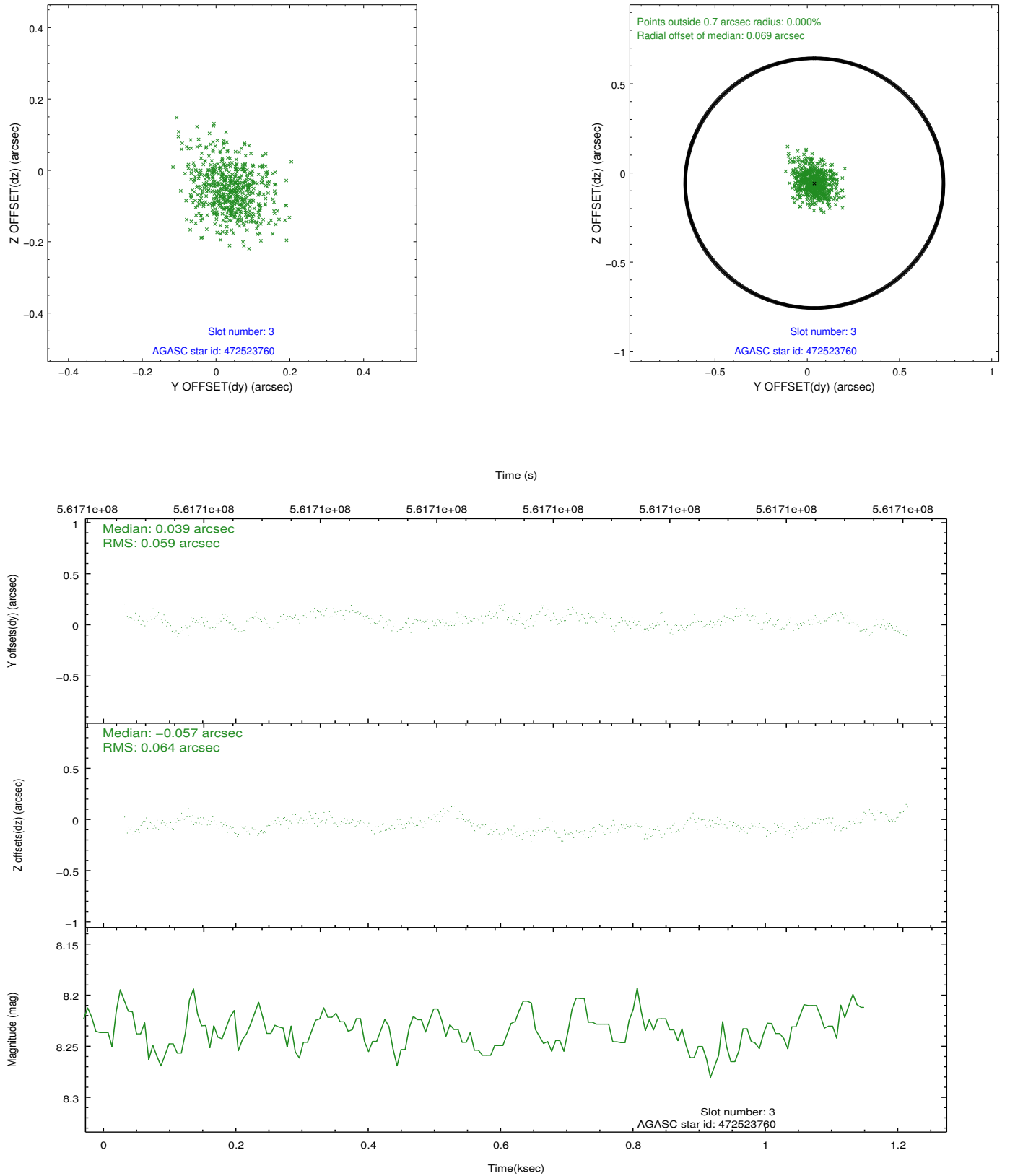


Slot Statistics

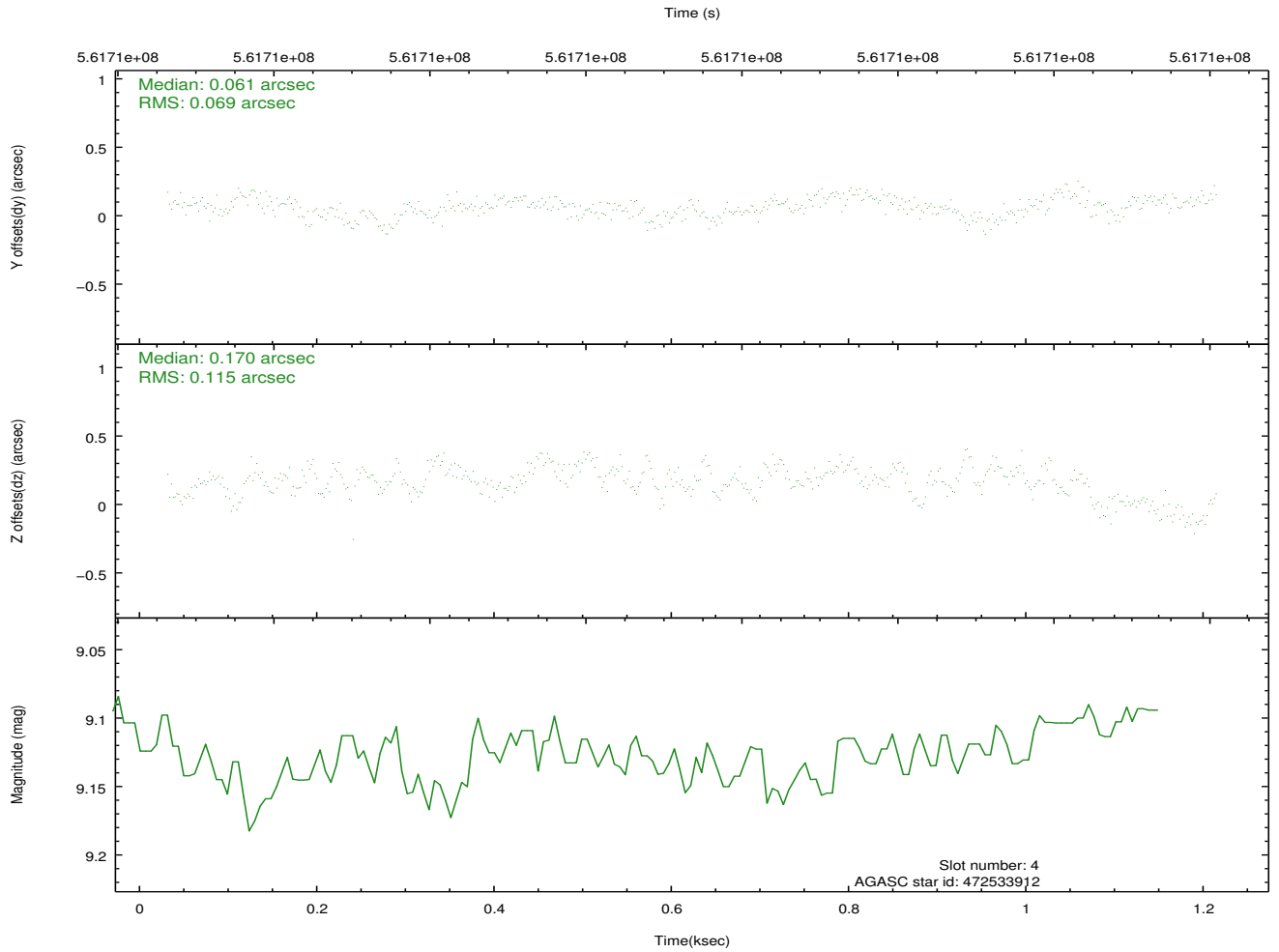
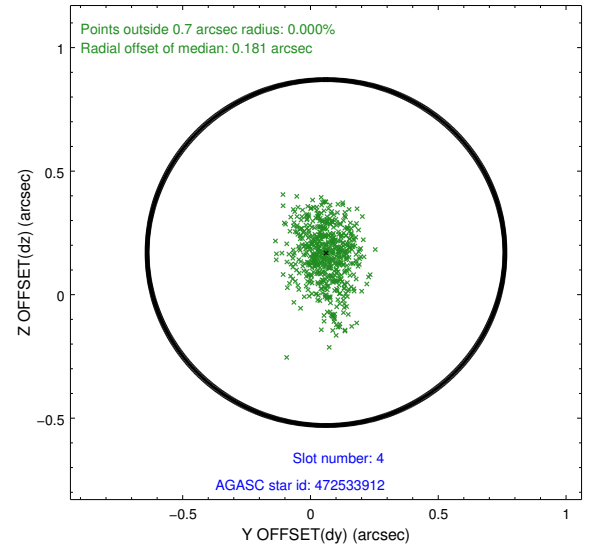
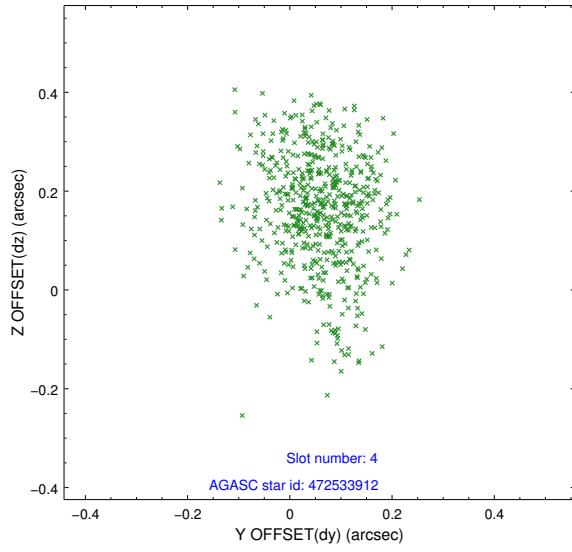
slot	status	used	id	mag	n_pts	med_dy	med_dz	dr1	dr2	ra	dec	mean_y	mean_z
0	FID		HRC-S-1	7.02	289	0.000	-0.193	0.011	0.042	0.000000	0.000000	-1167.61	-465.04
1	FID		HRC-S-2	7.00	289	0.346	-0.137	0.007	0.010	0.000000	0.000000	1228.35	-459.17
2	FID		HRC-S-3	7.02	289	0.044	0.027	0.009	0.039	0.000000	0.000000	-1166.06	563.11
3	GUIDE	used	472523760	8.23	578	0.039	-0.057	0.092	0.155	331.645363	45.403260	1930.80	-848.79
4	GUIDE	used	472533912	9.13	578	0.061	0.170	0.137	0.247	331.791136	46.368695	-1436.63	-1773.07
5	GUIDE	used	472655152	9.40	578	0.065	-0.097	0.179	0.280	332.504239	45.862991	-405.72	550.48
6	GUIDE	used	472665256	8.99	578	0.005	-0.100	0.128	0.196	332.808125	46.195041	-1796.94	811.04
7	GUIDE	used	472659832	9.41	577	-0.181	0.110	0.265	0.429	332.780399	46.098139	-1450.30	878.81

2.4 Star Slots

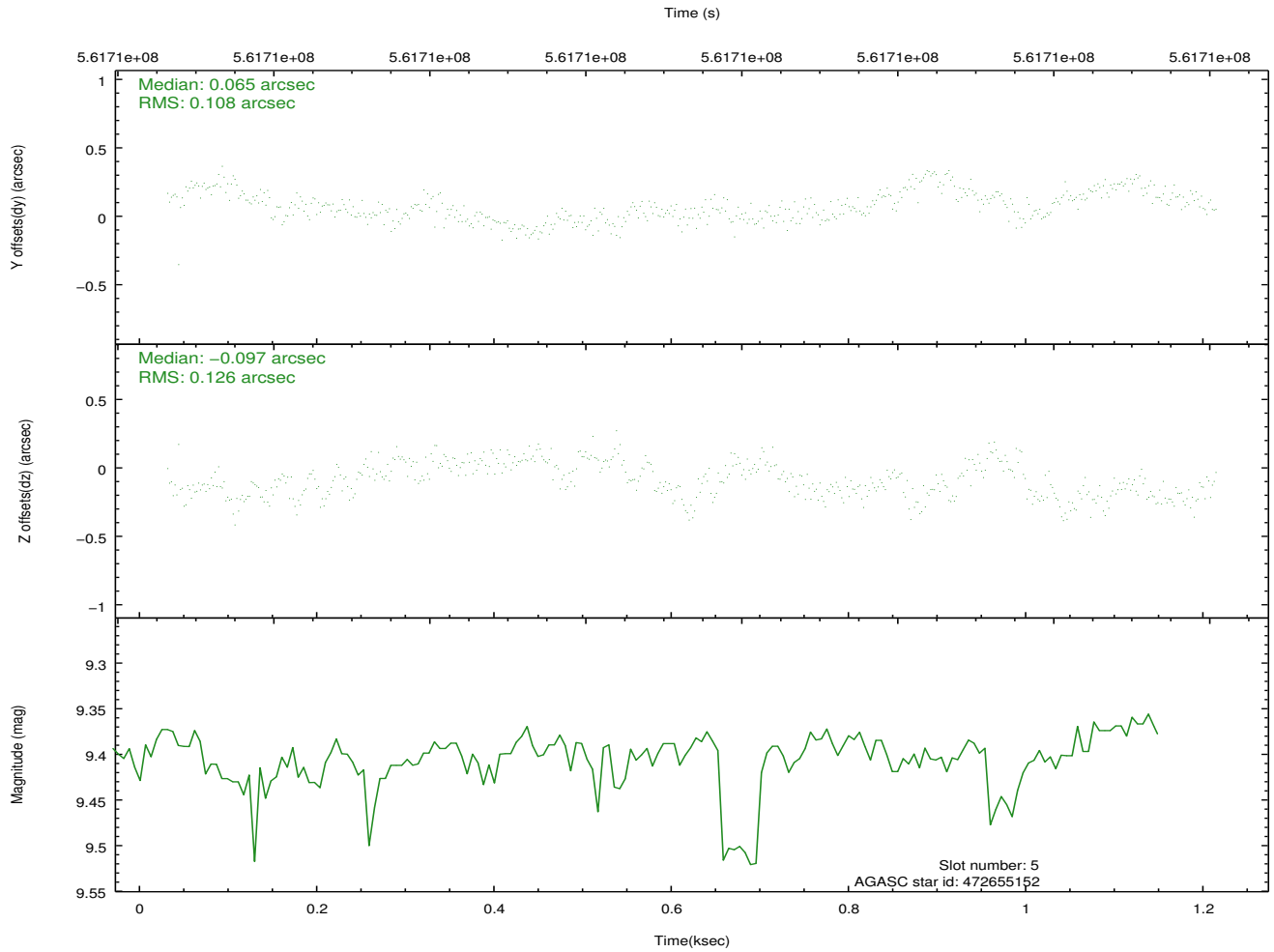
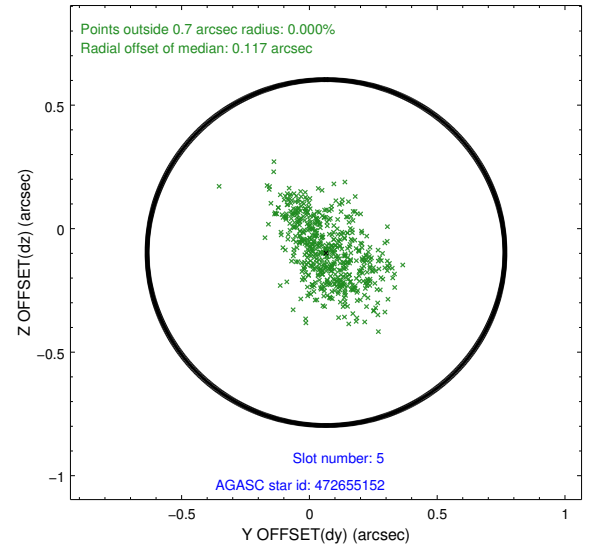
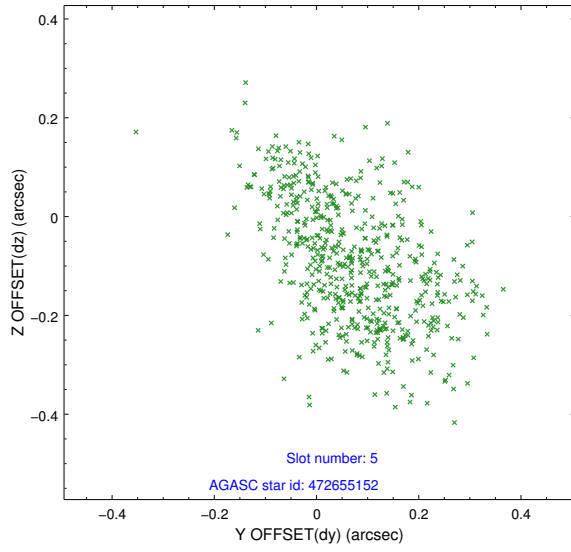
2.4.1 Slot 3



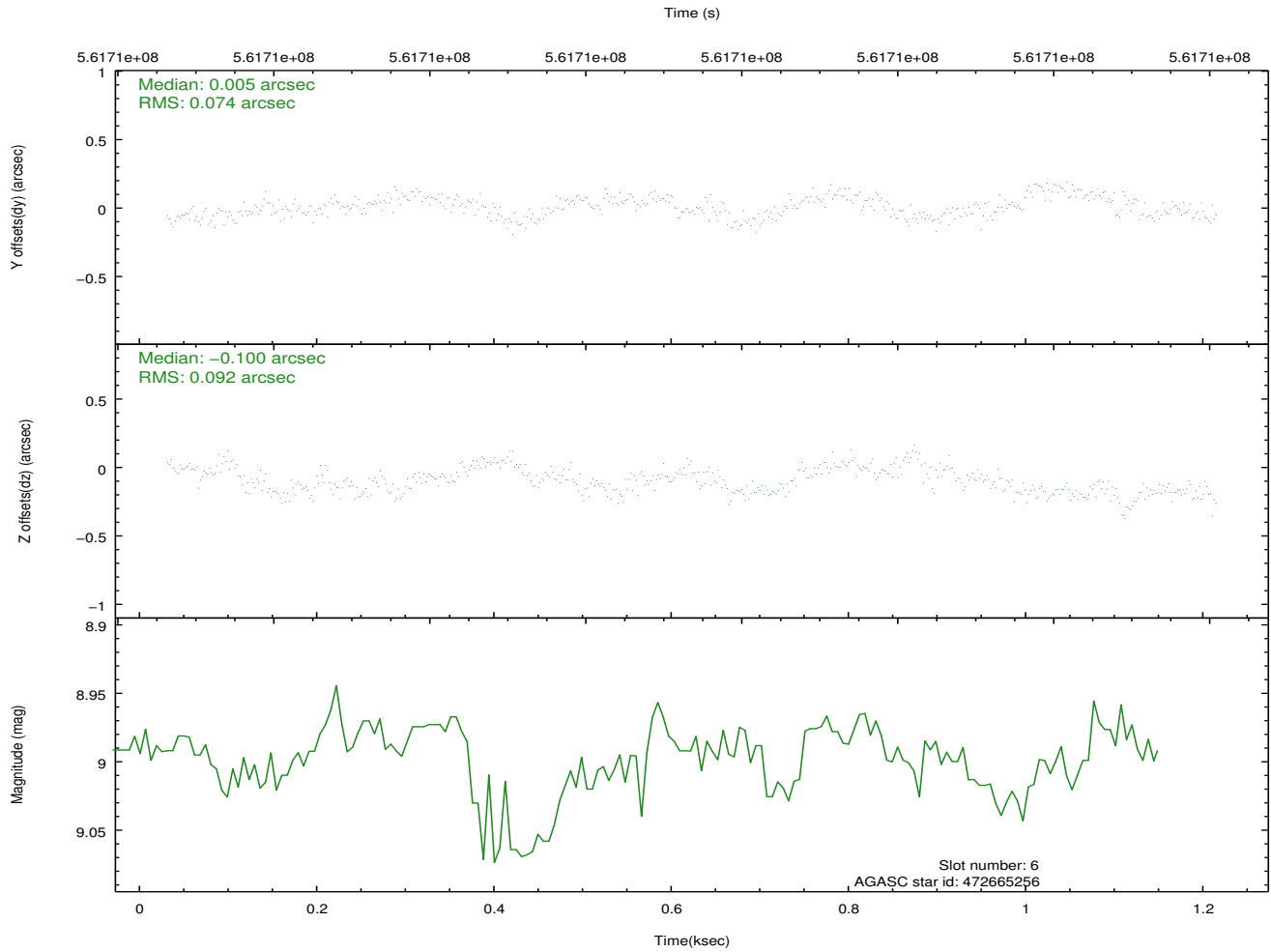
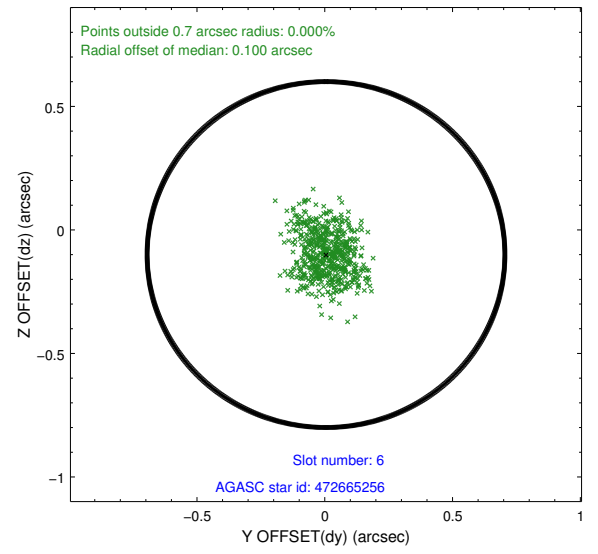
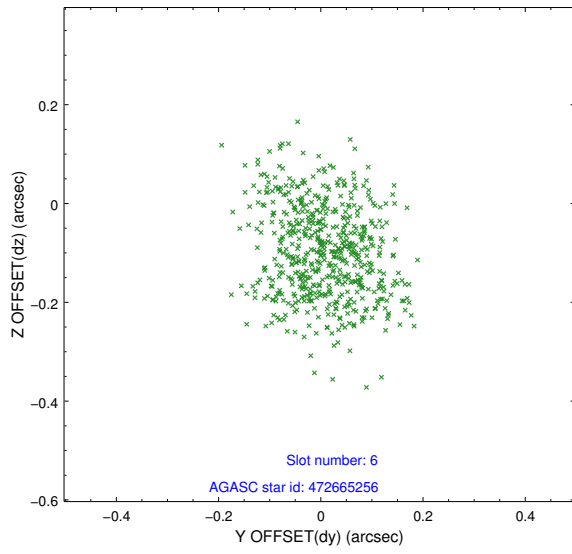
2.4.2 Slot 4



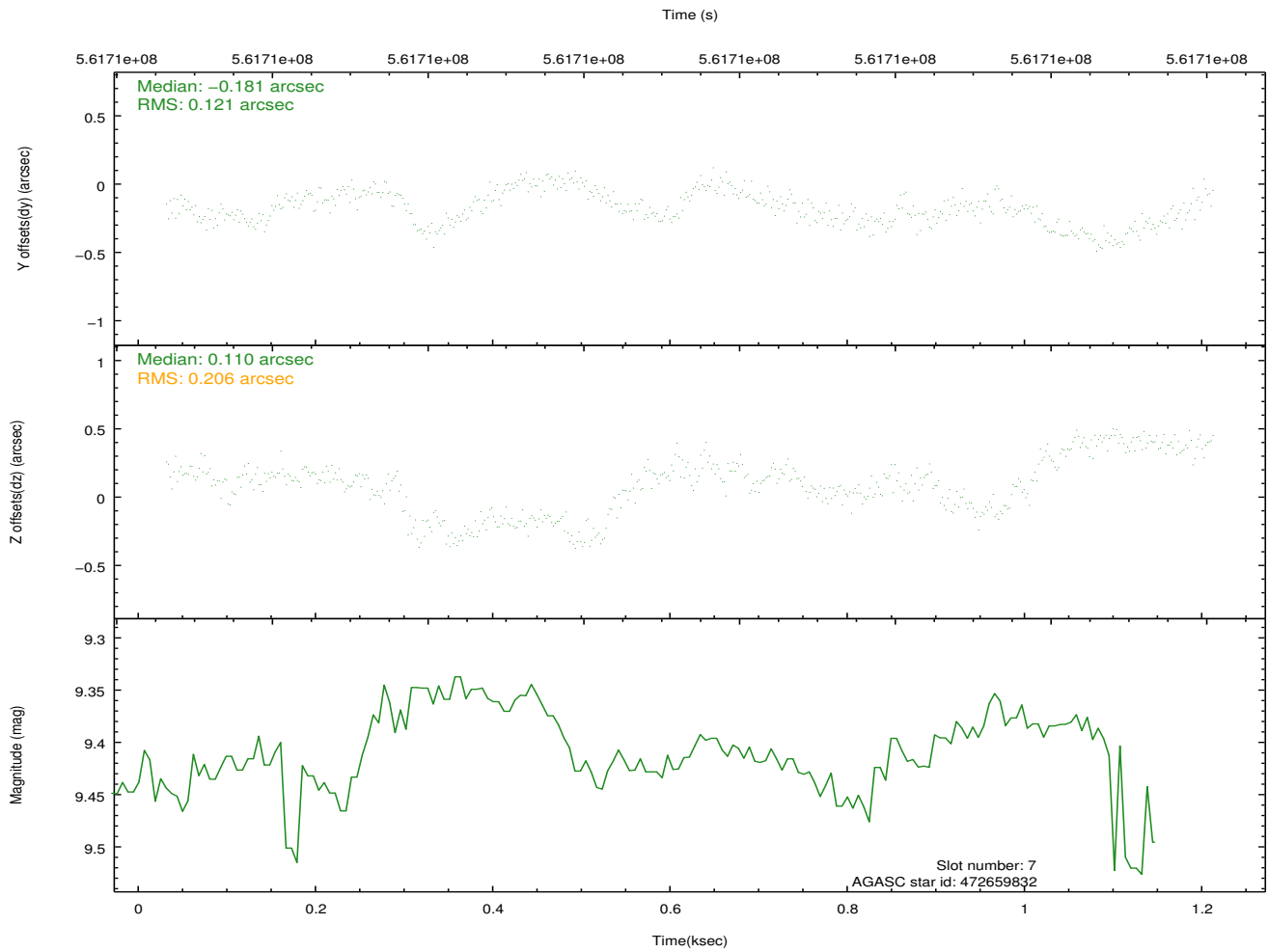
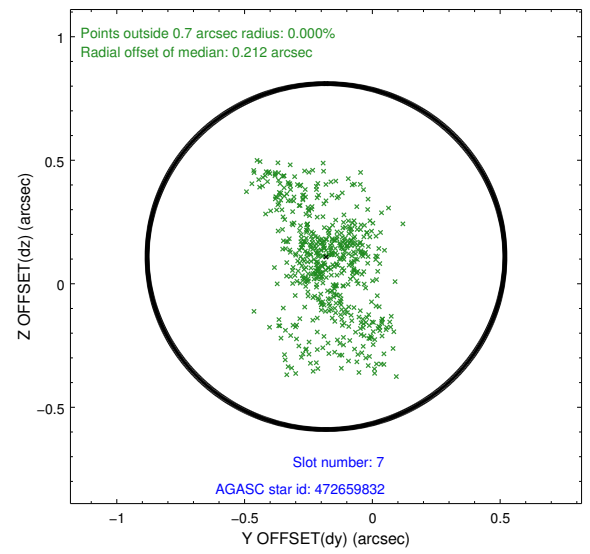
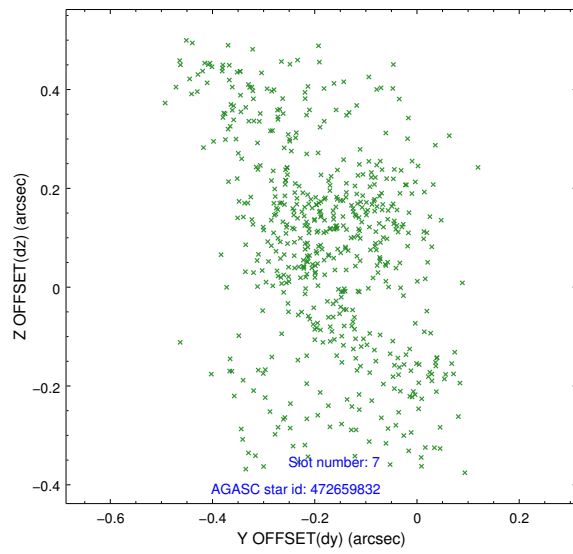
2.4.3 Slot 5



2.4.4 Slot 6

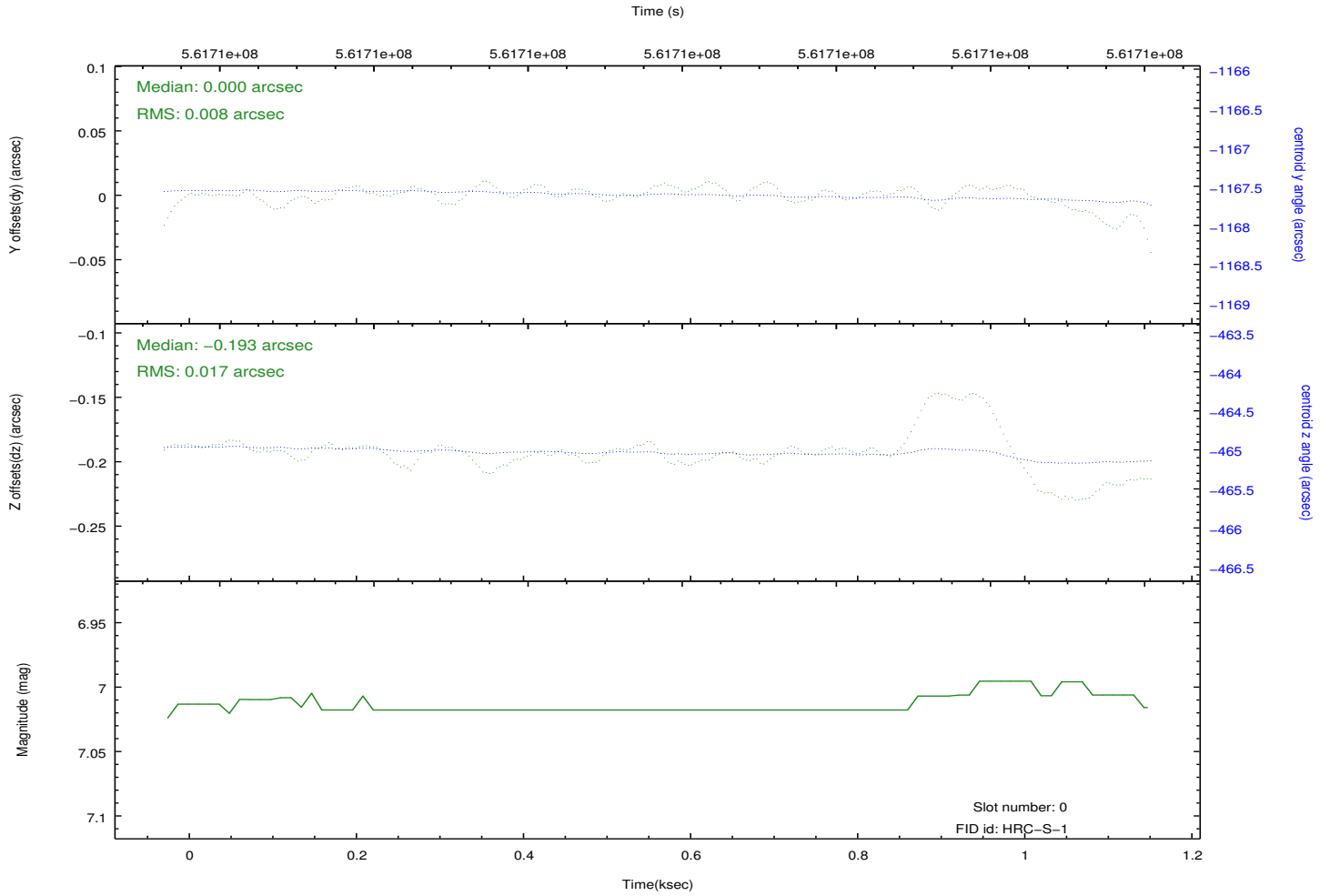
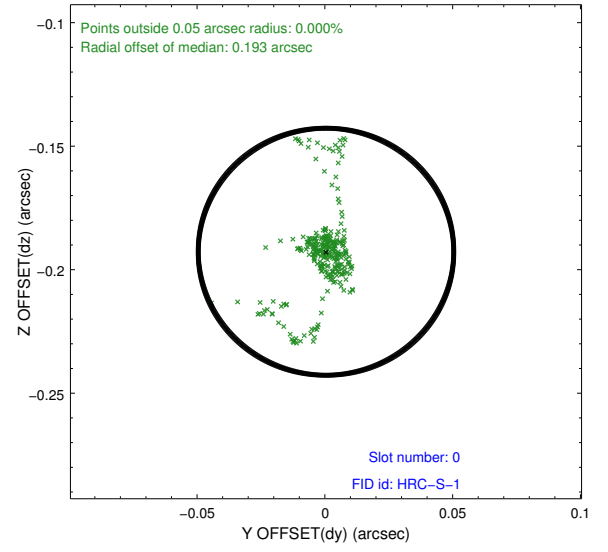
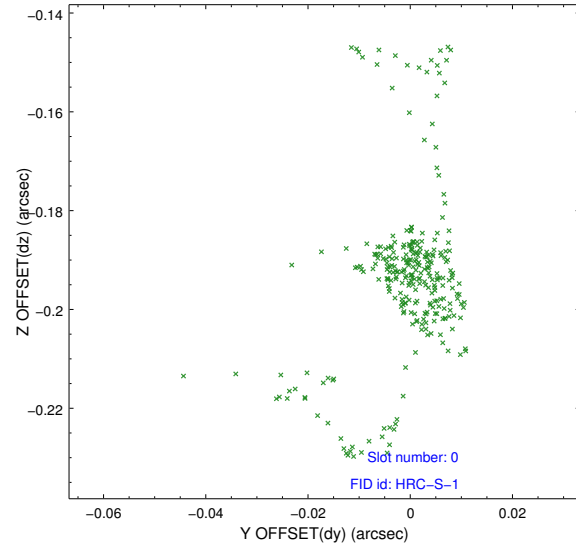


2.4.5 Slot 7

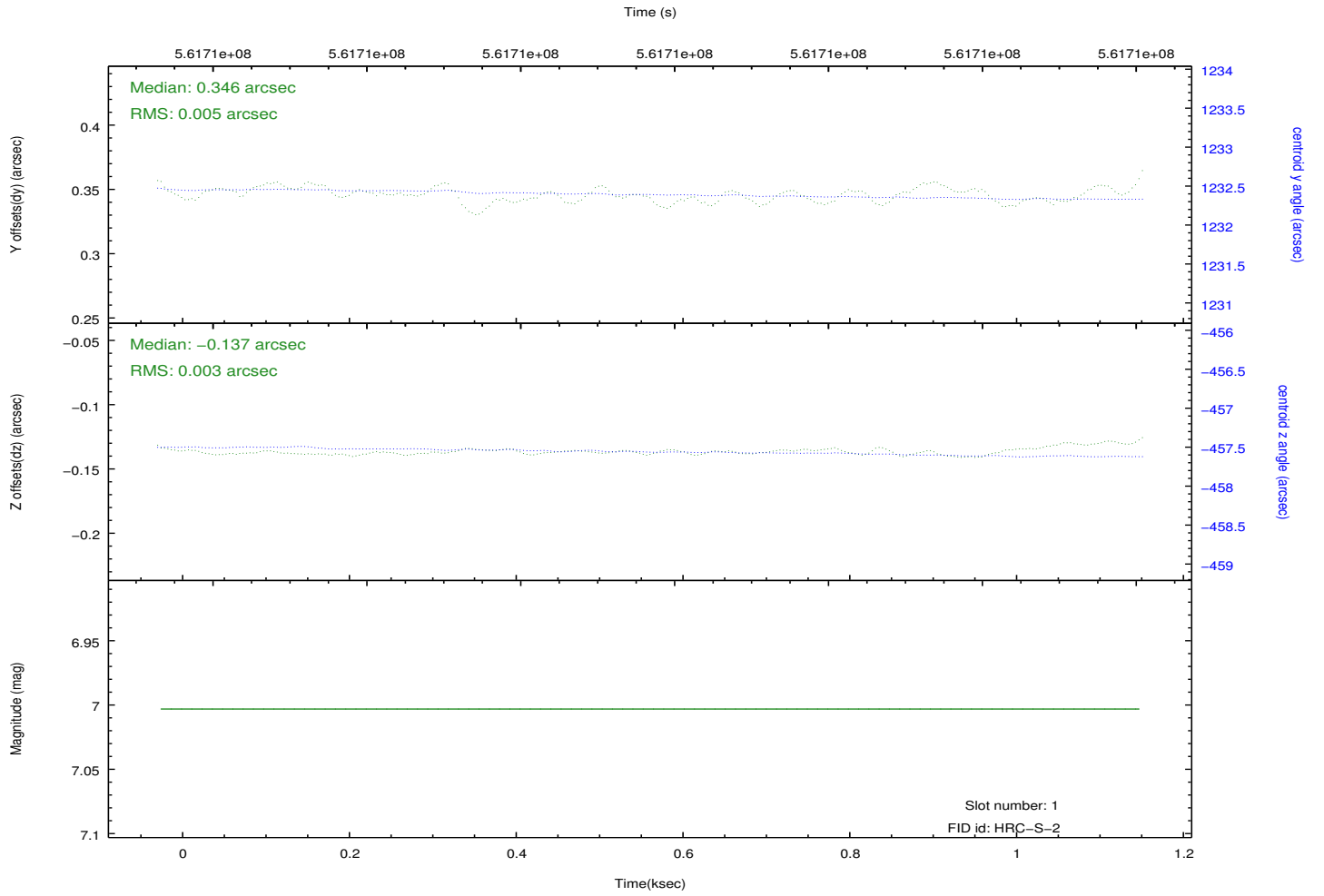
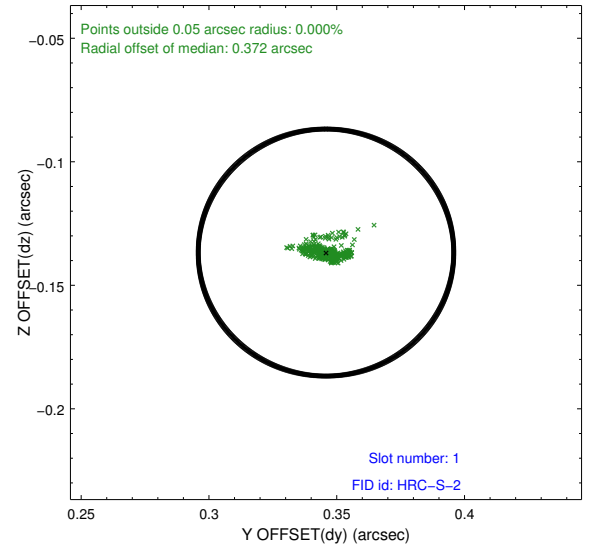
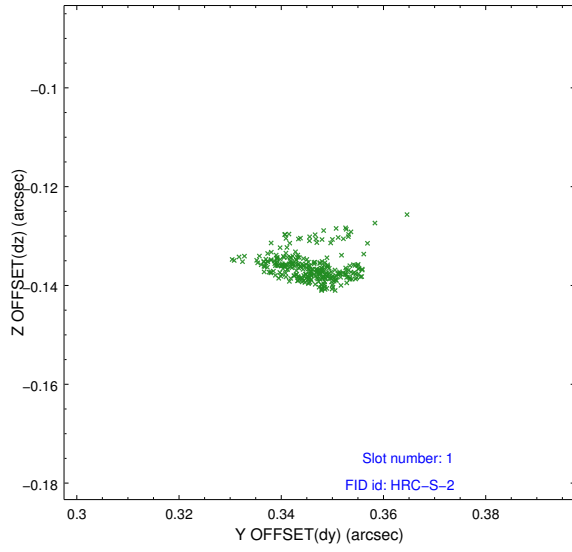


2.5 FID Slots

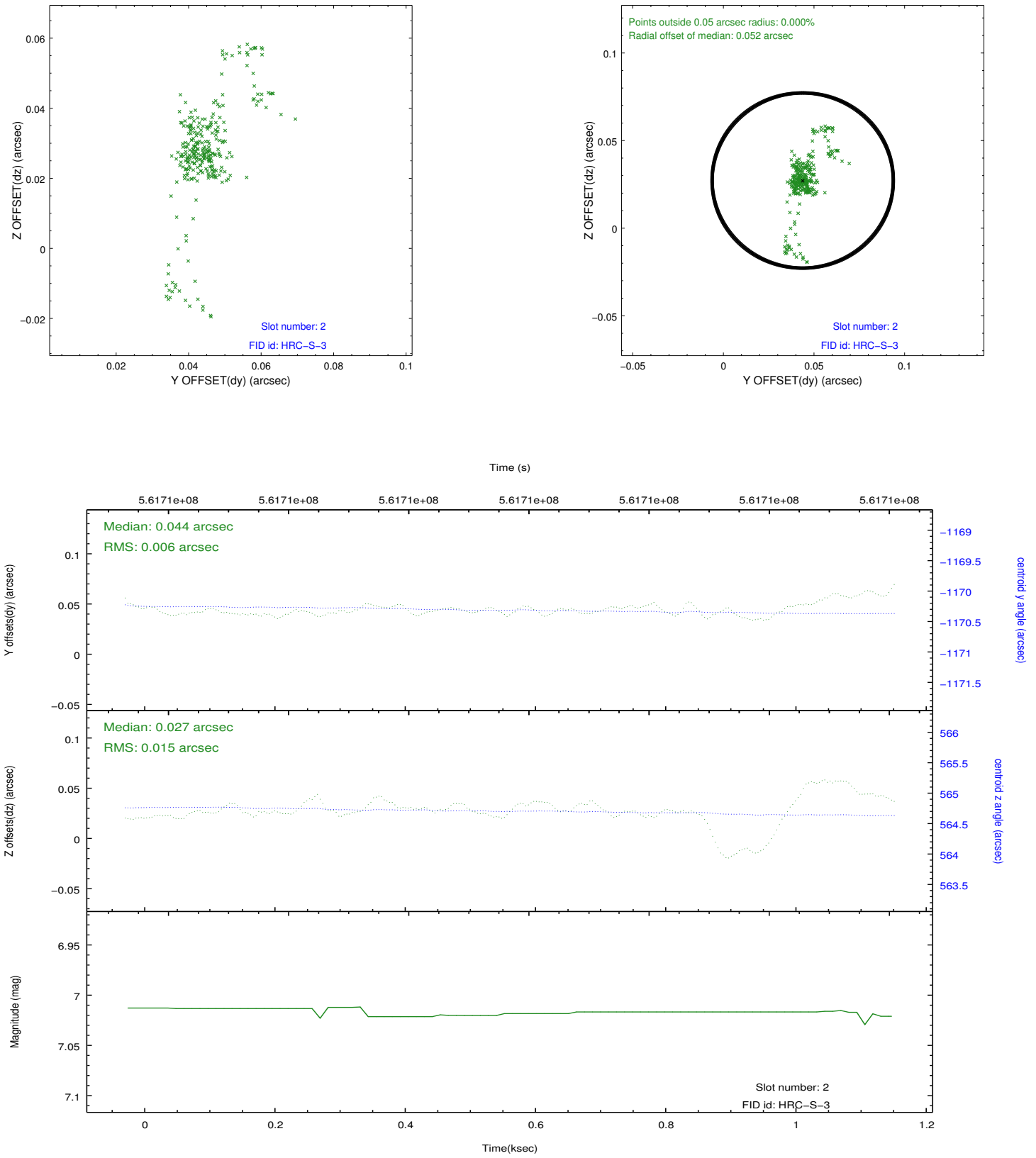
2.5.1 Slot 0



2.5.2 Slot 1



2.5.3 Slot 2



A Summary

A.1 Status

V&V Scientist	Jen Lauer
V&V Date (YYYY-MM-DD)	2015.10.21
V&V Edition	1
V&V Disposition and Status	OK
V&V Charge Time	1.1533813154697

A.2 Comments