

V&V Reference Report

L2 ASCDS Version : 8.4.5

Observation 1719 - L2 Version 4
Chandra X-Ray Center

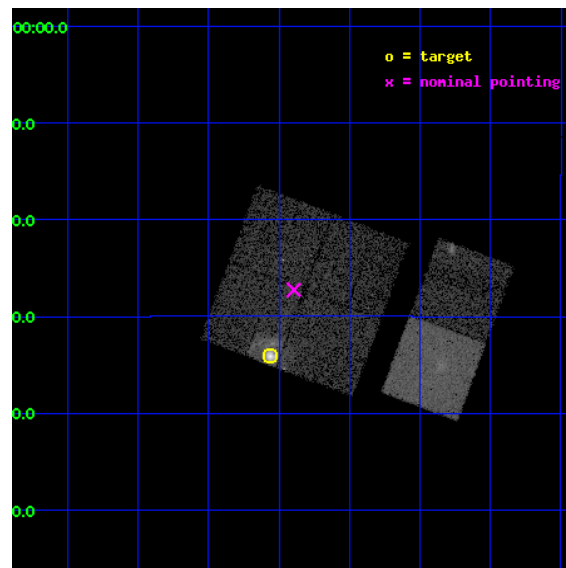
L2 Processing Date : Aug 28 2012

Contents

1	Front	2
2	OBI	3
2.1	OBI	3
2.1.1	Images	3
2.1.2	Bias	3
2.1.3	Parameters	4
2.1.4	Events	4
2.2	Compared Parameters	5
2.3	Aspect	6
2.4	Star Slots	9
2.4.1	Slot 3	9
2.4.2	Slot 4	10
2.4.3	Slot 5	11
2.4.4	Slot 6	12
2.4.5	Slot 7	13
2.5	FID Slots	14
2.5.1	Slot 0	14
2.5.2	Slot 1	15
2.5.3	Slot 2	16
A	Summary	17
A.1	Status	17
A.2	Comments	17

1 Front

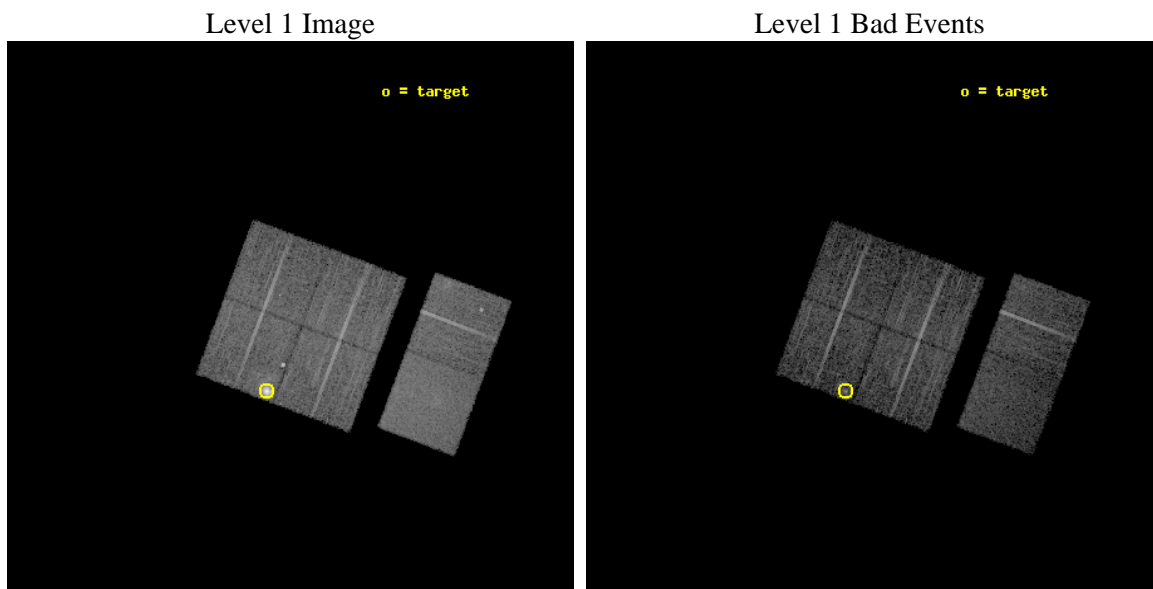
seq_num	590172	Sequence number
obs_id	1719	Observation id
title	HRC RESPONSE TO CONTINUUM SOURCE.	Proposal title
observer	Dr. CXC Calibration	Principal investigator
object	G21.5-0.9 [Chip I1, T=120, Offsets=-7,0,-1]	Source name
dtcycle	0	
cycle	P	events from which exps? Prim/Second/Both
ra_targ	278.389583	Observer's specified target RA [deg]
dec_targ	-10.568528	Observer's specified target Dec [deg]
ra_nom	278.34844285135	Nominal RA [deg]
dec_nom	-10.454250853417	Nominal Dec [deg]
roll_nom	110.59406011357	Nominal Roll [deg]
revision	4	Processing version of data
ontime	7835.2589364052	Sum of GTIs [s]
livetime	7736.0441699259	Livetime [s]
ontime0	7835.2178964019	Sum of GTIs [s]
ontime1	7835.2589364052	Sum of GTIs [s]
ontime2	7835.2999764085	Sum of GTIs [s]
ontime3	7835.3410163969	Sum of GTIs [s]
ontime6	7835.4230964035	Sum of GTIs [s]
ontime7	7835.3820564002	Sum of GTIs [s]
l2events	75515	Number of level 2 events



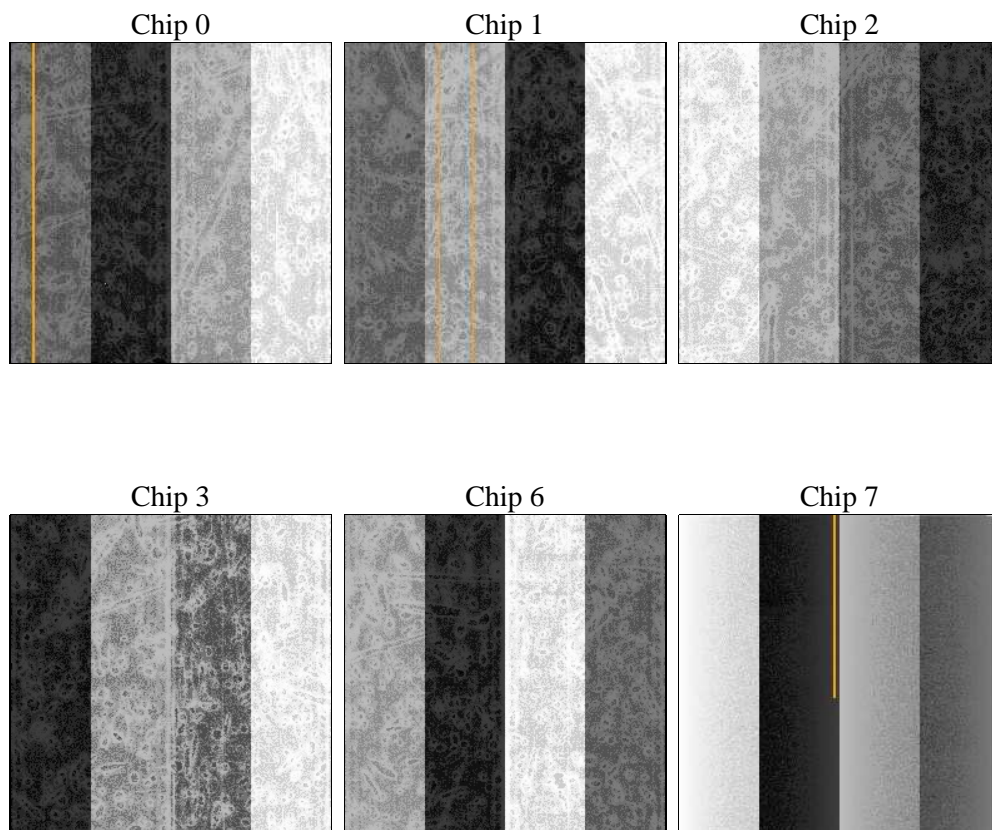
2 OBI

2.1 OBI

2.1.1 Images



2.1.2 Bias



2.1.3 Parameters

obi_num	0	Obi number	sched_exp_time	8000.000000	[s] Scheduled observation exposure time
ascdsver	8.4.5	Processing system revision	ontime	7835.2589364052	Sum of GTIs [s]
caldsver	4.5.1.1	 	ontime0	7835.2178964019	Sum of GTIs [s]
date	2012-08-28T04:36:44	Date and time of file creation	ontime1	7835.2589364052	Sum of GTIs [s]
revision	4	Processing version of data	ontime2	7835.2999764085	Sum of GTIs [s]
			ontime3	7835.3410163969	Sum of GTIs [s]
			ontime6	7835.4230964035	Sum of GTIs [s]
			ontime7	7835.3820564002	Sum of GTIs [s]
			l1events	338764	Number of level 1 events

2.1.4 Events

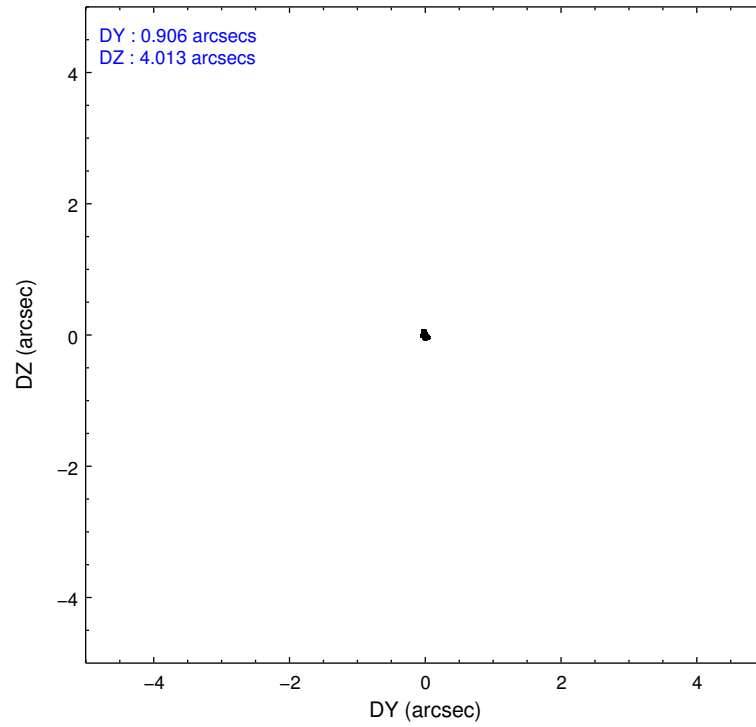
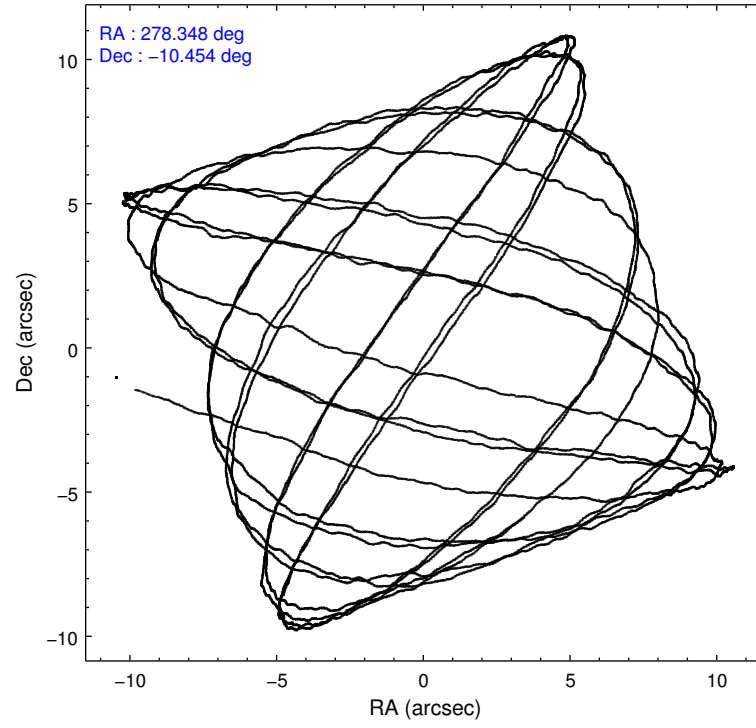
	ccd 0	ccd 1	ccd 2	ccd 3	ccd 6	ccd 7		ccd 0	ccd 1	ccd 2	ccd 3	ccd 6	ccd 7
level 1 events	46479	71844	53727	53427	53337	59950	grade 0 events	3600	20029	2771	3618	3736	2654
rejected events	39250	42170	47487	46098	45857	33482		7%	27%	5%	6%	7%	4%
rejected %	84%	58%	88%	86%	85%	55%	grade 1 events	29	152	35	21	24	54
								0%	0%	0%	0%	0%	0%
							grade 2 events	1380	4227	1343	1433	1416	5238
								2%	5%	2%	2%	2%	8%
							grade 3 events	599	1580	562	594	573	2460
								1%	2%	1%	1%	1%	4%
							grade 4 events	613	1503	521	599	617	2426
								1%	2%	0%	1%	1%	4%
							grade 5 events	1641	1812	1539	1683	1862	5554
								3%	2%	2%	3%	3%	9%
							grade 6 events	1041	2348	1045	1087	1142	13700
								2%	3%	1%	2%	2%	22%
							grade 7 events	37576	40193	45911	44392	43967	27864
								80%	55%	85%	83%	82%	46%

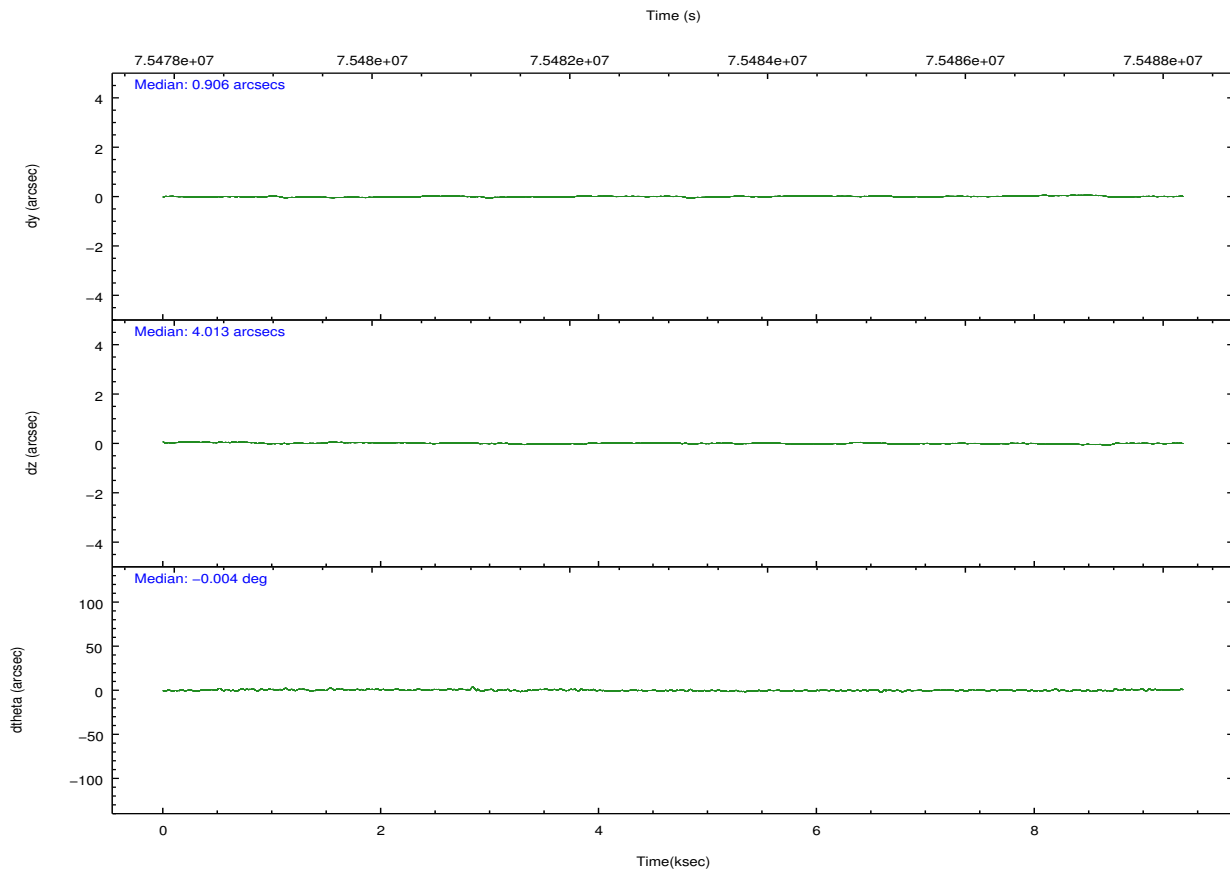
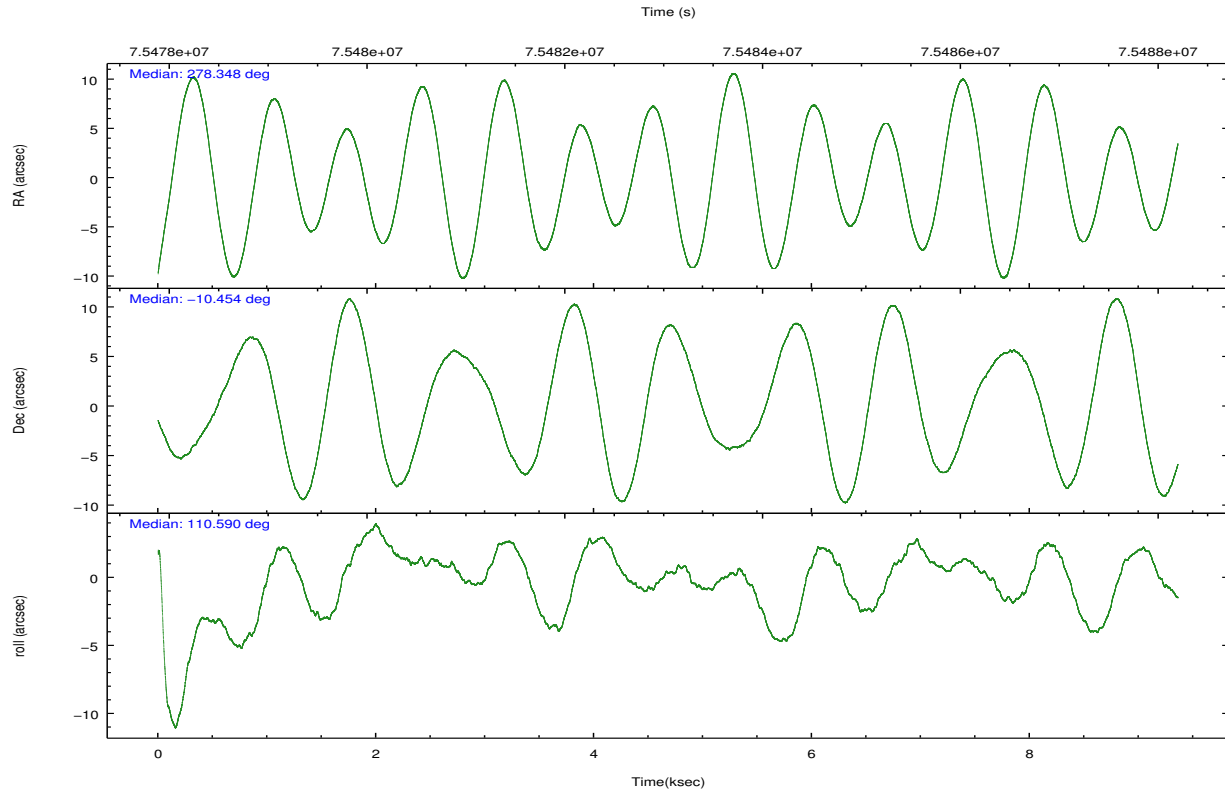
2.2 Compared Parameters

Parameter	Planned	Actual
Instrument	ACIS	ACIS
Detector	ACIS-012367	ACIS-012367
Grating	NONE	NONE
Data mode	FAINT	FAINT
Observation mode	POINTING	POINTING
[deg] Pointing RA	278.370026	278.3484428513459
[deg] Pointing Dec	-10.471831	-10.45425085341713
[deg] Pointing Roll	110.389270	110.5940601135694
[mm] SIM focus pos	-0.782348	-0.7809083437167272
[mm] SIM defocus	0	0.001439871863259334
[mm] SIM translation stage pos	-238.277263	-238.2741181829365
[mm] SIM translation stage offset	4.6848	4.681665180006831
[s] Observation start time (MET)	75479725.184000	75478179.192531
Observation start date	2000-05-23T14:34:21	2000-05-23T14:09:39
[s] Observation end time (MET)	75487725.184000	75487859.292887
Observation end date	2000-05-23T16:47:41	2000-05-23T16:50:59
Read mode	TIMED	TIMED

Parameter	Planned	Actual
Obspar format version number	7	7
Obspar file type	PREDICTED	ACTUAL
Obspar update status	NONE	UPDATED
Number of optional ACIS chips dropped	0	0
On-chip summing requested	N	N
Subarray requested	NONE	NONE
Alternating exposures requested	N	N
[s] Primary exposure time	0.000000	3.2

2.3 Aspect



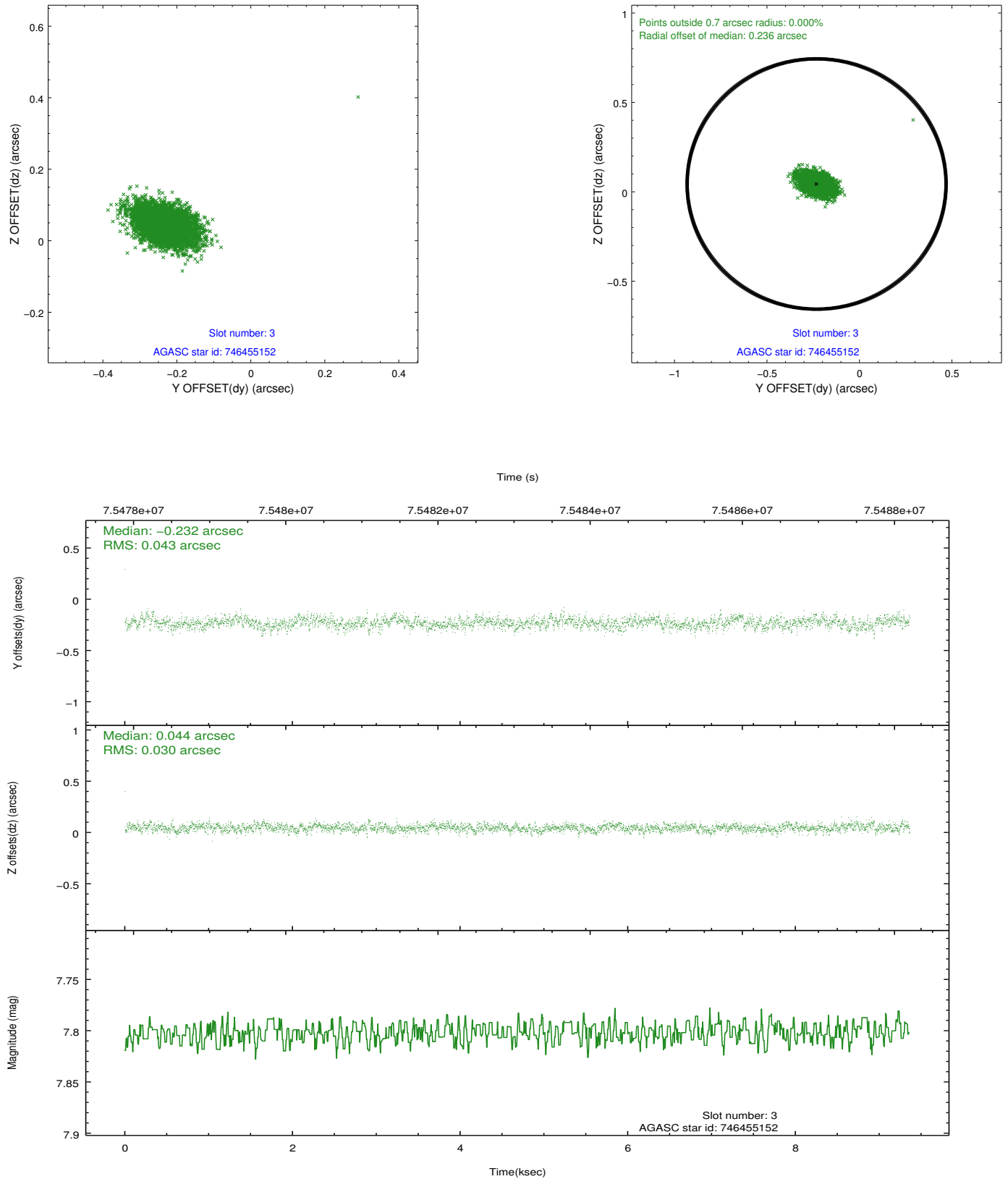


Slot Statistics

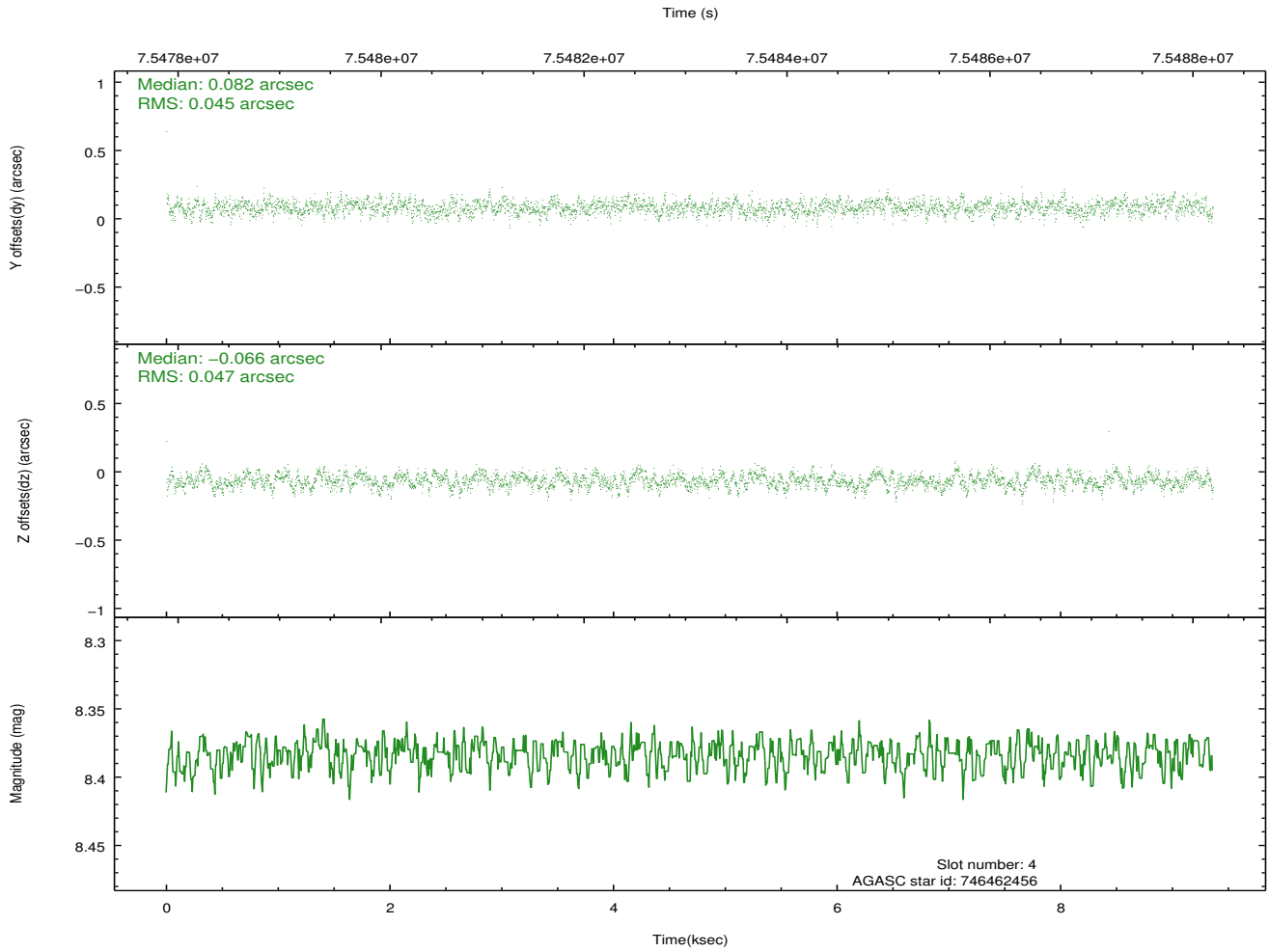
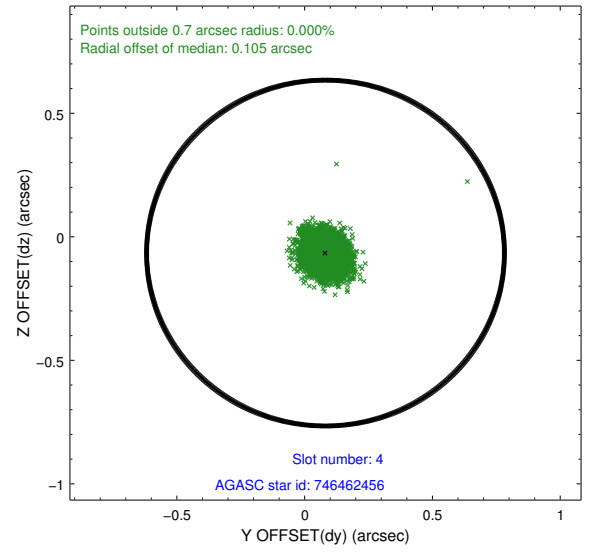
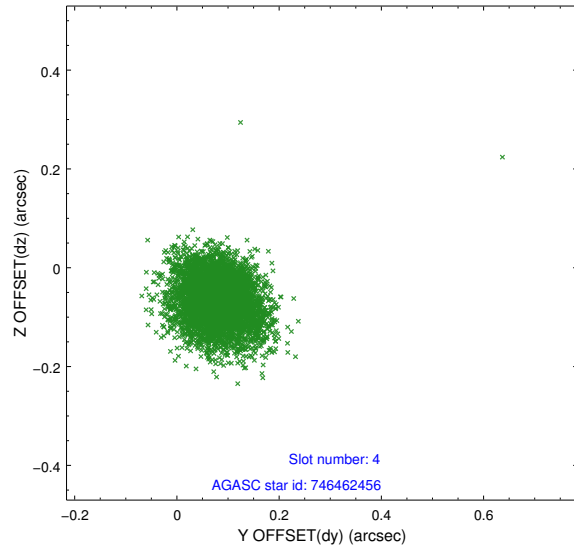
slot	status	id	mag	n_pts	med_dy	med_dz	dr1	dr2	ra	dec	mean_y	mean_z
0	FID	ACIS-I-2	7.16	2284	-0.057	-0.087	0.010	0.017	0.000000	0.000000	-754.92	-738.16
1	FID	ACIS-I-4	7.19	2281	-0.053	0.062	0.006	0.011	0.000000	0.000000	2158.83	1168.06
2	FID	ACIS-I-5	7.24	2281	0.009	0.094	0.009	0.015	0.000000	0.000000	-1808.25	1167.04
3	GUIDE	746455152	7.80	4560	-0.232	0.044	0.054	0.094	278.447893	-9.976732	1574.93	-880.24
4	GUIDE	746462456	8.38	4567	0.082	-0.066	0.068	0.110	278.652171	-10.530173	-544.16	-863.66
5	GUIDE	746462392	8.53	4567	0.117	0.001	0.071	0.112	279.038421	-10.890715	-2238.51	-1689.68
6	GUIDE	746455112	8.93	4567	0.084	0.025	0.074	0.120	278.266531	-10.703234	-653.20	632.36
7	GUIDE	746458288	9.97	4565	-0.051	-0.002	0.143	0.232	278.591405	-9.671581	2427.04	-1740.45

2.4 Star Slots

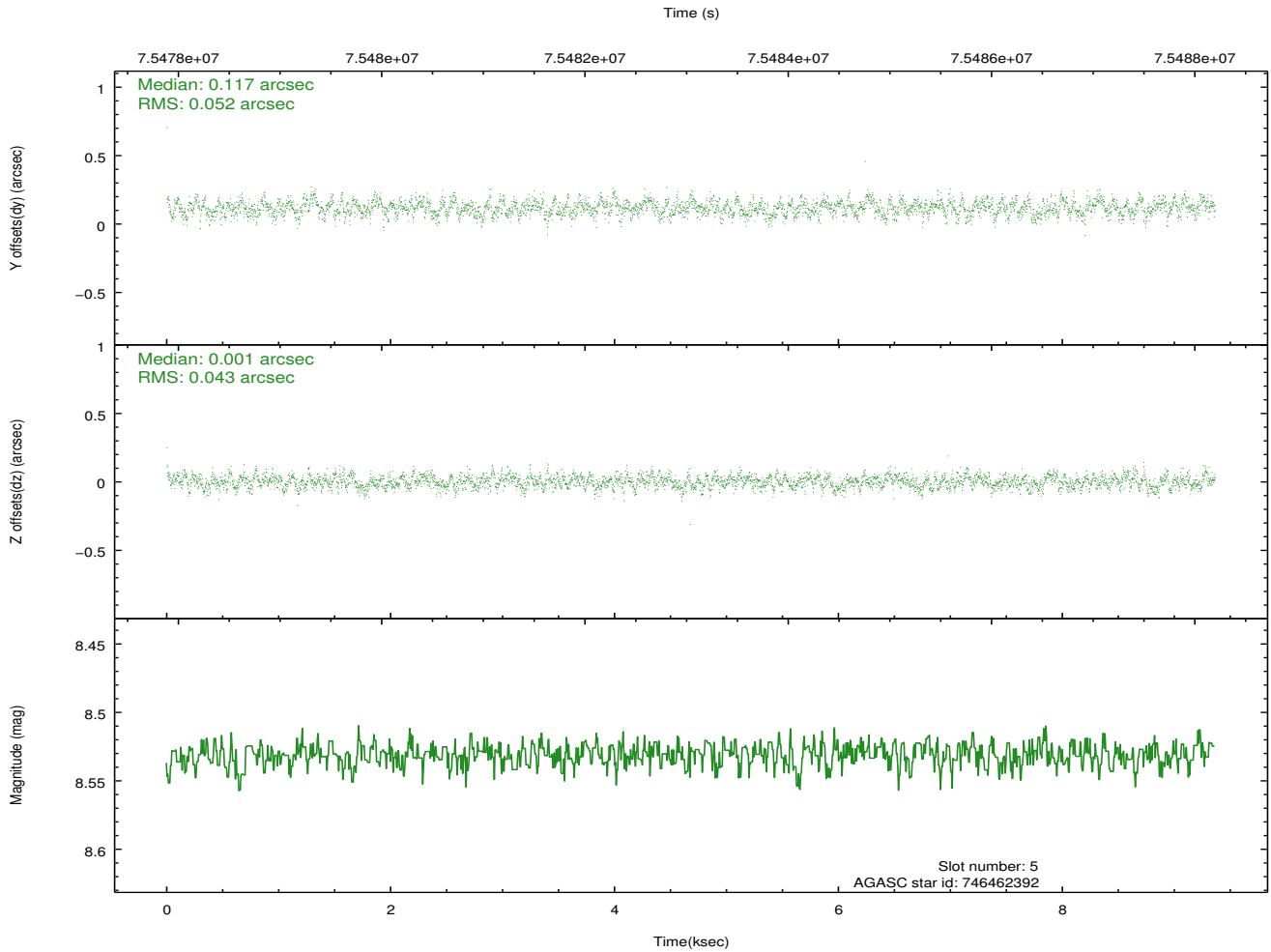
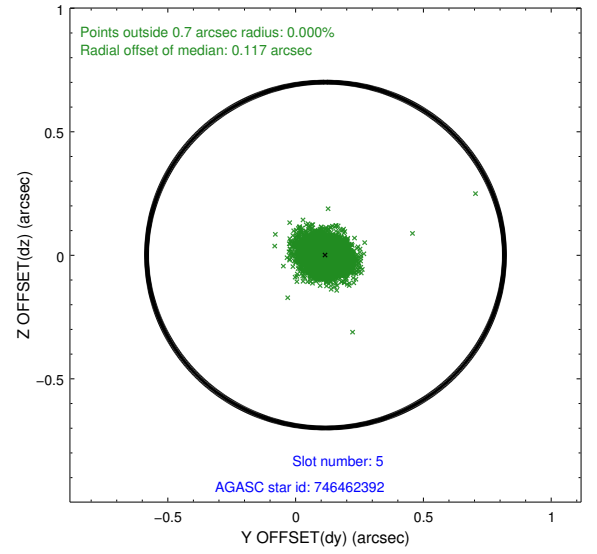
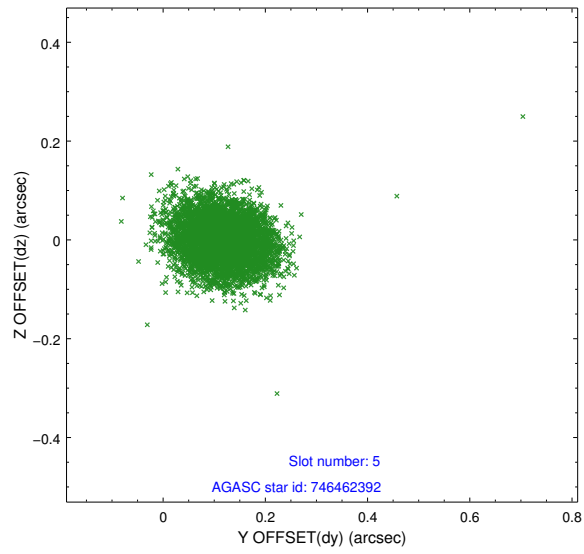
2.4.1 Slot 3



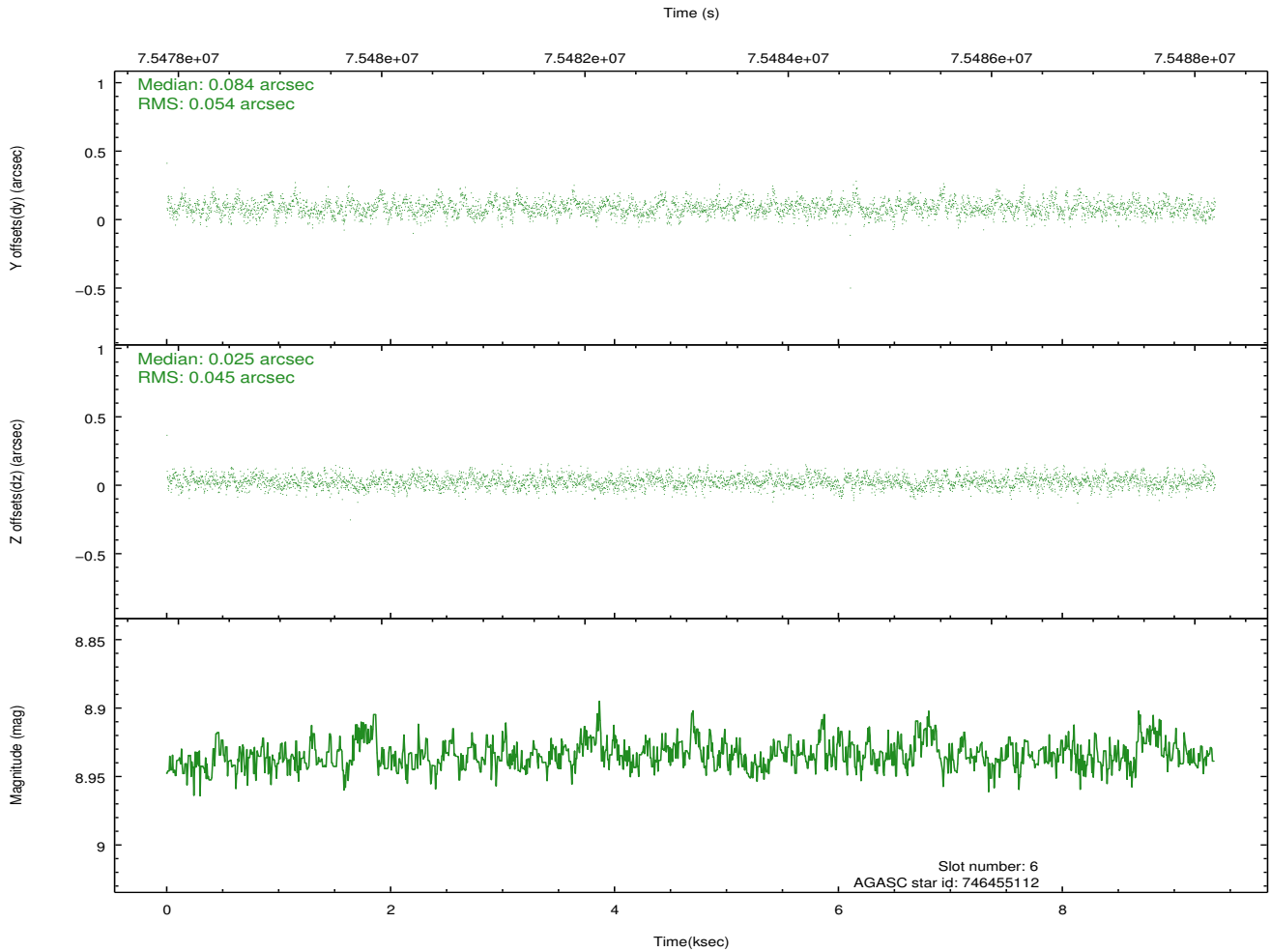
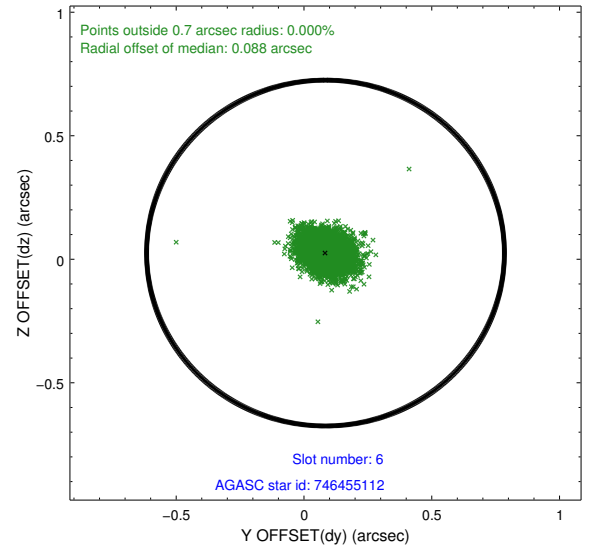
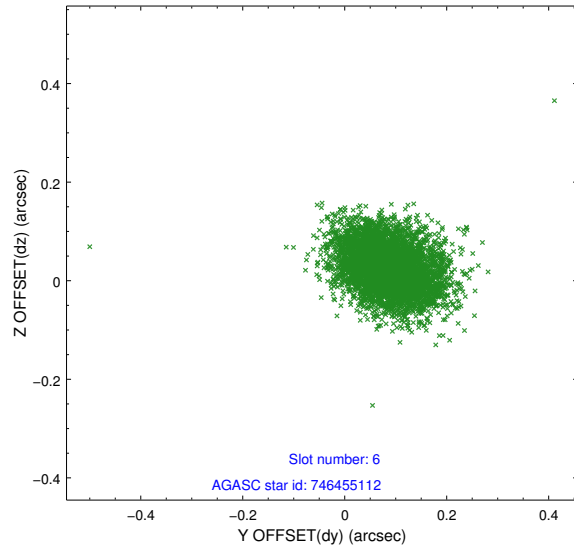
2.4.2 Slot 4



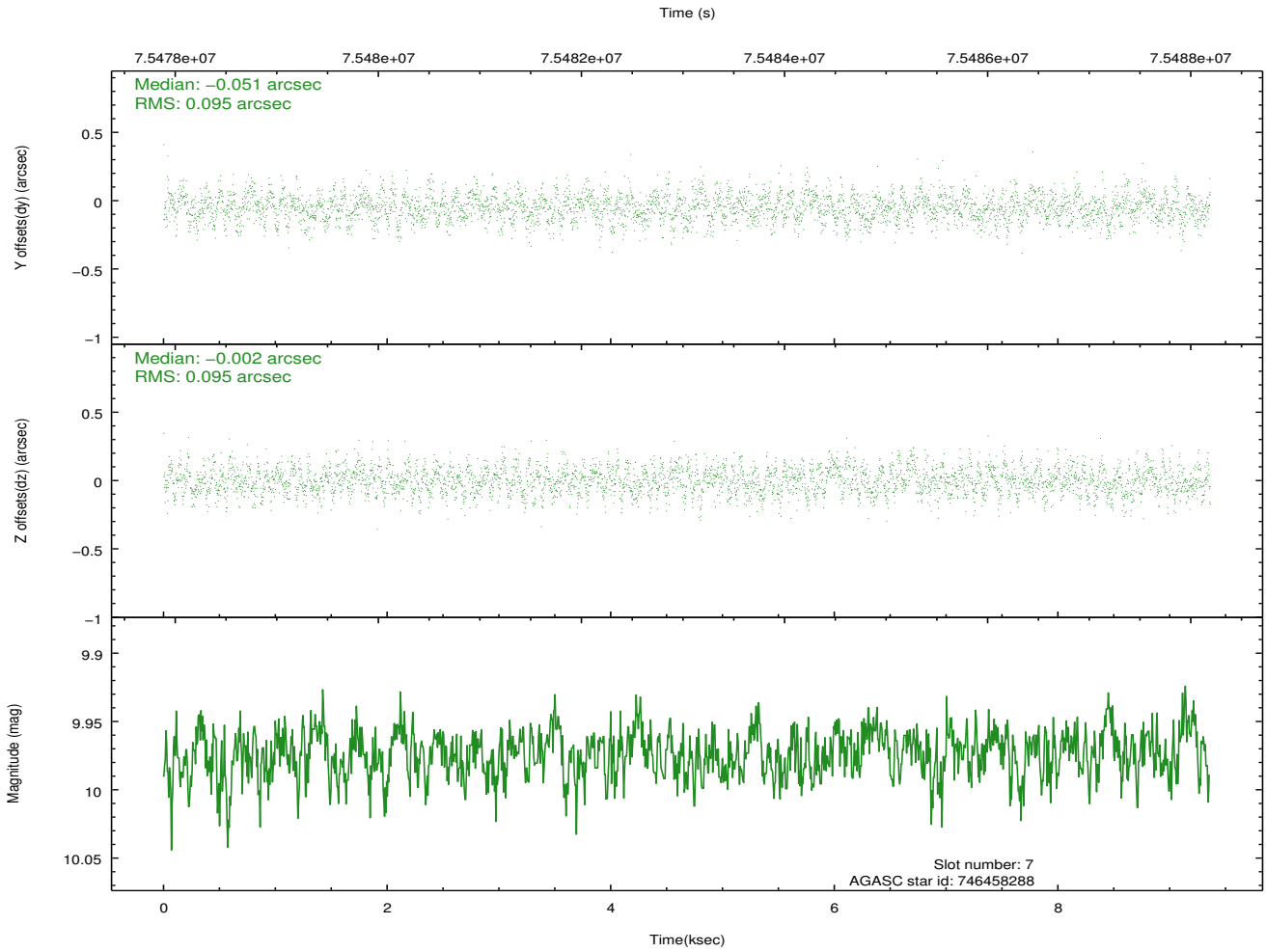
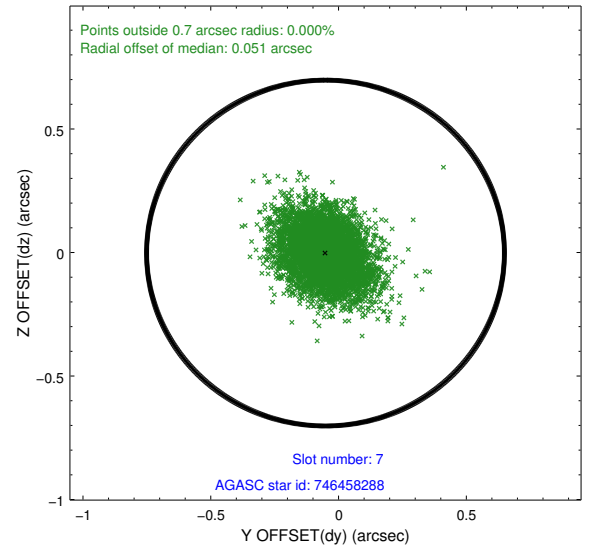
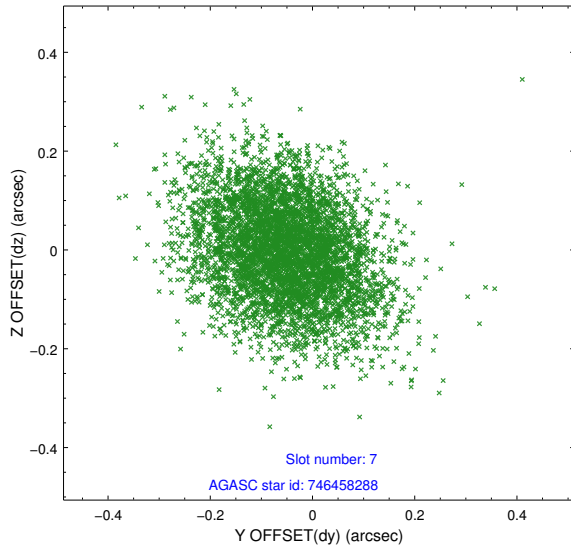
2.4.3 Slot 5



2.4.4 Slot 6

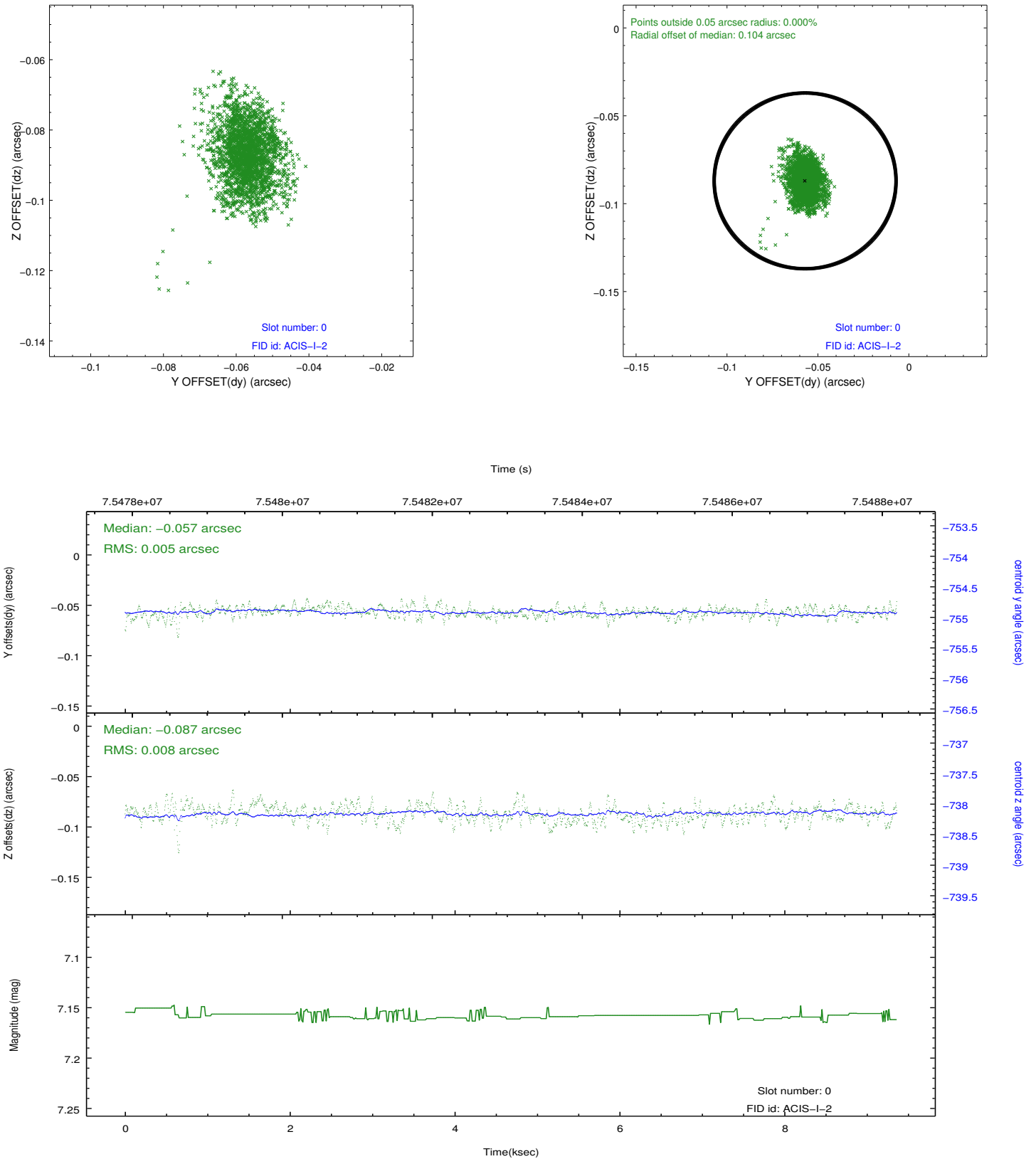


2.4.5 Slot 7

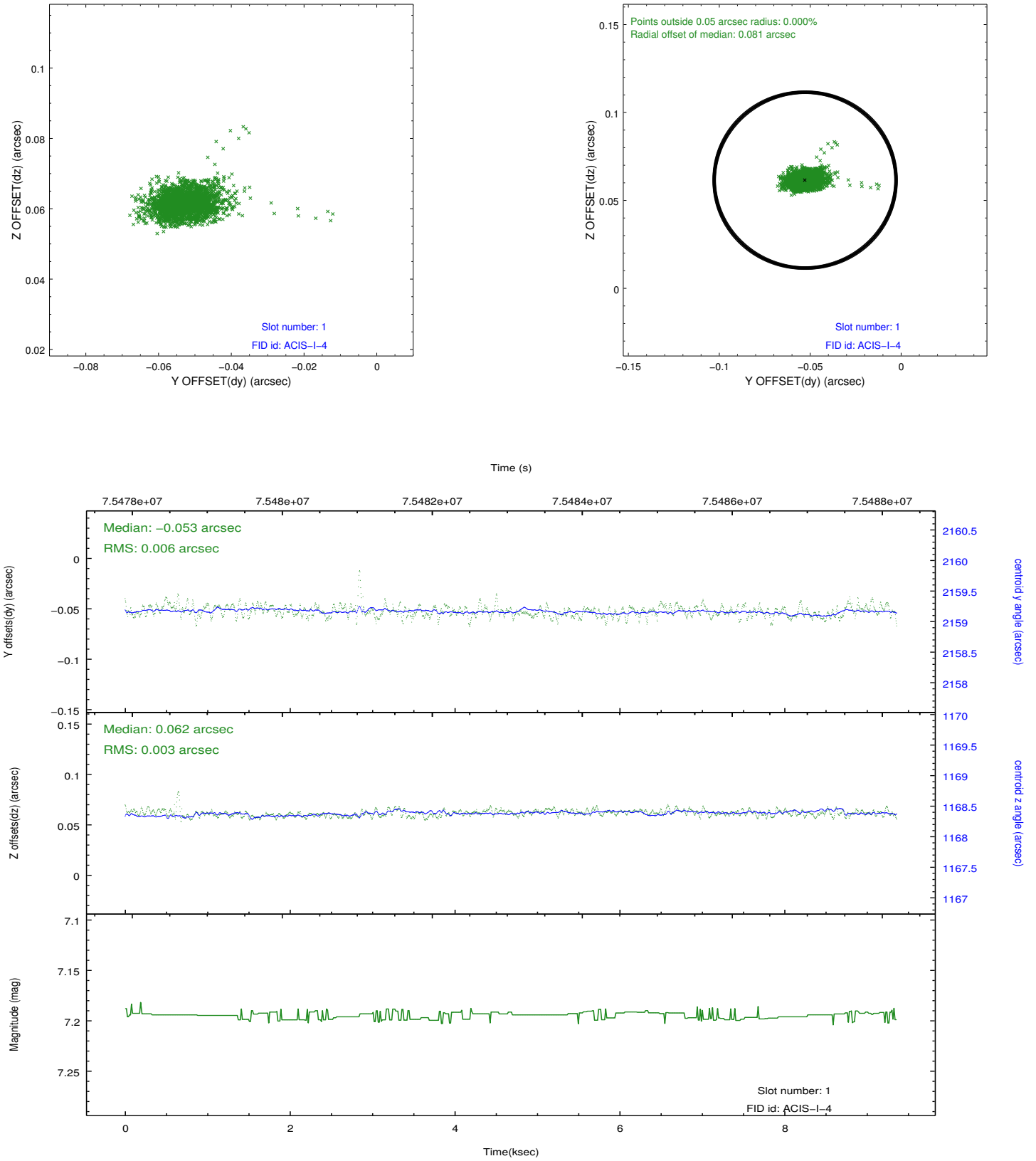


2.5 FID Slots

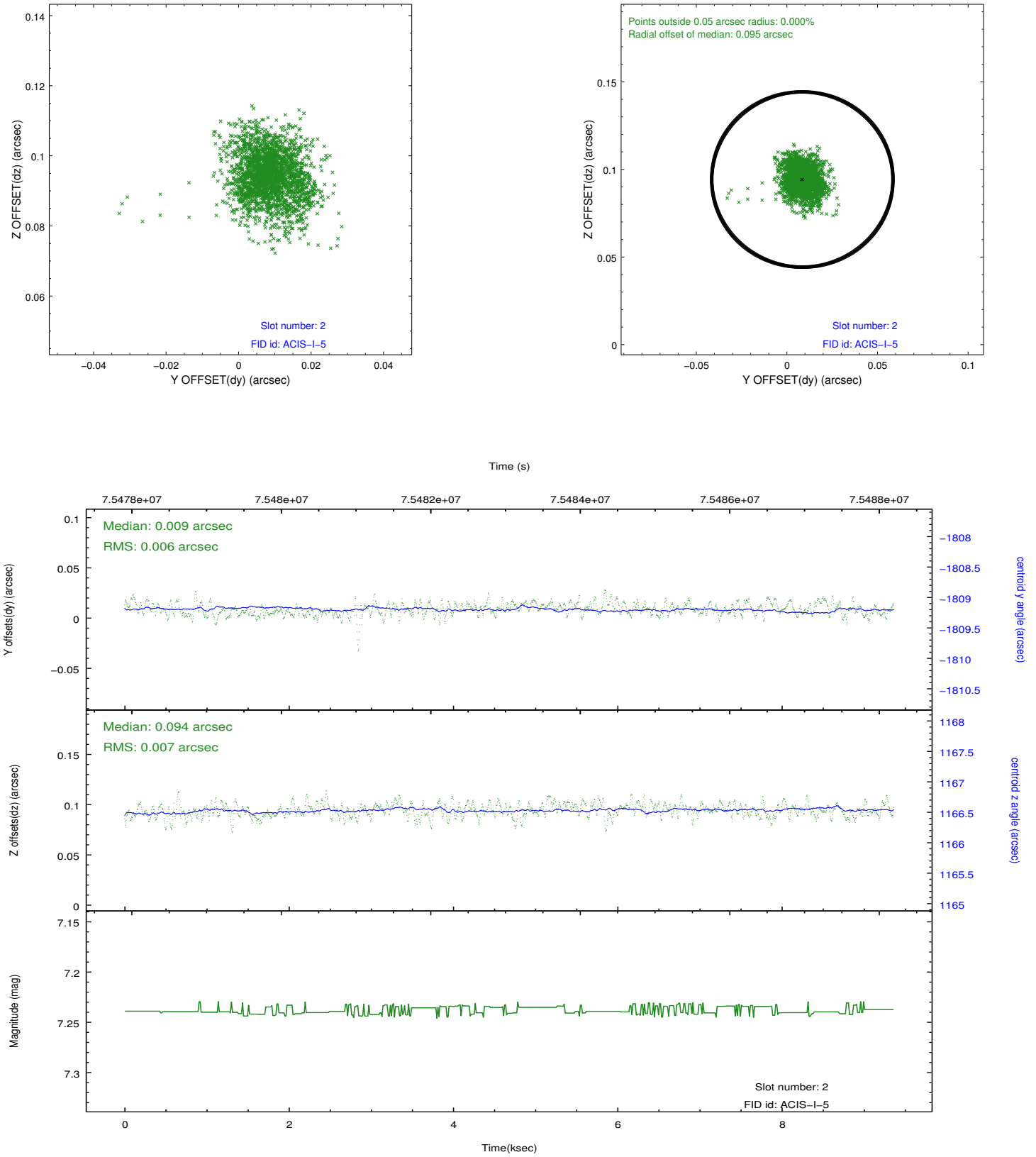
2.5.1 Slot 0



2.5.2 Slot 1



2.5.3 Slot 2



A Summary

A.1 Status

V&V Scientist	Beth Sundheim
V&V Date (YYYY-MM-DD)	2012.08.30
V&V Edition	1
V&V Disposition and Status	OK
V&V Charge Time	7.737

A.2 Comments

Charge time for this observation remains at previous value of 7.737 ksec.