

V&V Reference Report

L2 ASCDS Version : 7.6.10

Observation 1709 - L2 Version 001
Chandra X-Ray Center

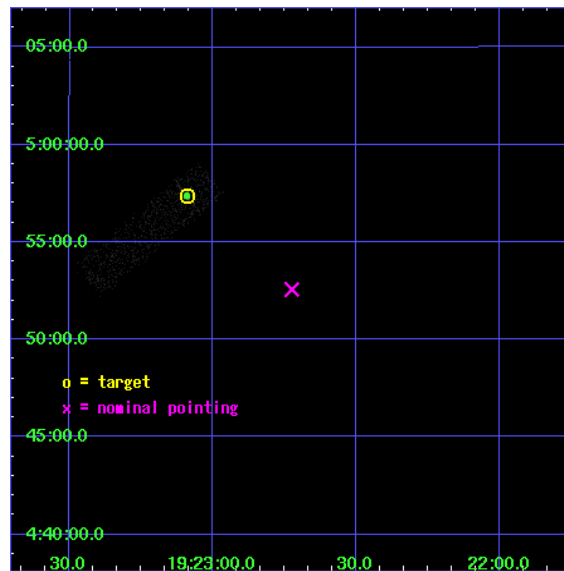
L2 Processing Date : Jun 2 2007

Contents

1	Front	2
2	OBI	3
2.1	OBI	3
2.1.1	Images	3
2.1.2	Bias	3
2.1.3	Parameters	4
2.1.4	Events	4
2.2	Compared Parameters	5
2.3	Aspect	6
2.4	Star Slots	9
2.4.1	Slot 3	9
2.4.2	Slot 4	10
2.4.3	Slot 5	11
2.4.4	Slot 6	12
2.4.5	Slot 7	13
2.5	FID Slots	14
2.5.1	Slot 0	14
2.5.2	Slot 1	15
2.5.3	Slot 2	16
3	Point Sources	17
A	Summary	18
A.1	Status	18
A.2	Comments	18

1 Front

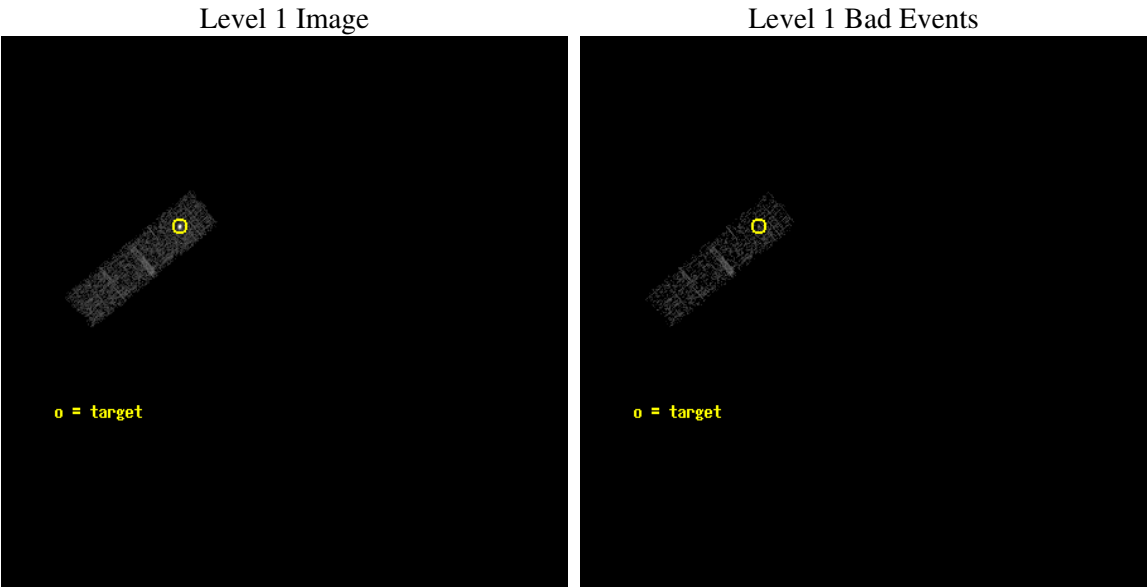
seq_num	300042
obs_id	1709
title	MULTIWAVELENGTH TOO OBSERVATIONS OF BRIGHT NOVAE IN OUTBURST
observer	Professor Sumner Starrfield
object	V1494 Aql
dtcycle	0
cycle	P
ra_targ	290.772
dec_targ	4.956
ra_nom	290.68133913985
dec_nom	4.8760960492036
roll_nom	230.55293375488
revision	3
ontime	5619.1589589715
liveltime	5344.9623884443
ontime3	5619.1589589715
l2events	4081



2 OBI

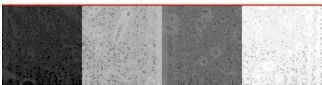
2.1 OBI

2.1.1 Images



2.1.2 Bias

Chip 3



2.1.3 Parameters

obi_num	0
ascdsver	7.6.10
caldbver	3.4.0
date	2007-06-02T04:24:25
revision	3

sched_exp_time	5300.000000
ontime	5619.1589589715
ontime3	5619.1589589715
l1events	15017

2.1.4 Events

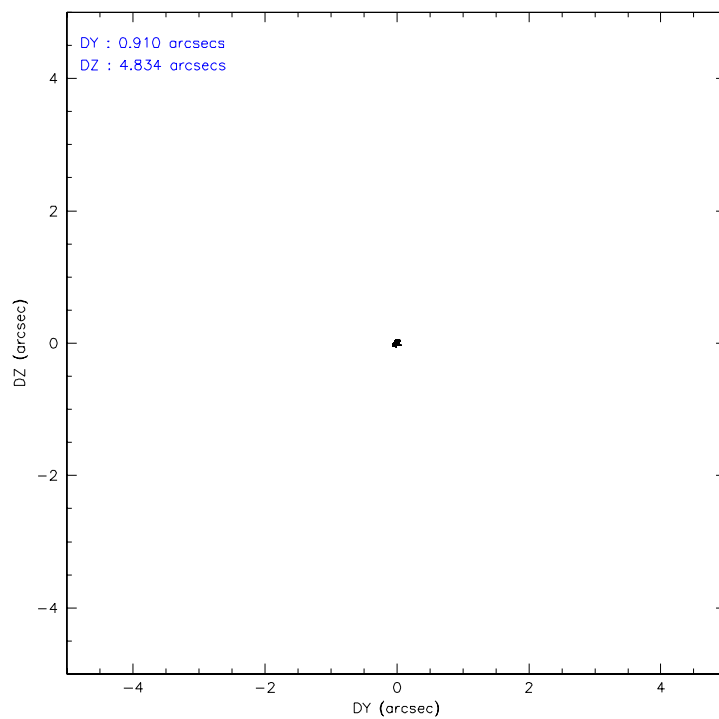
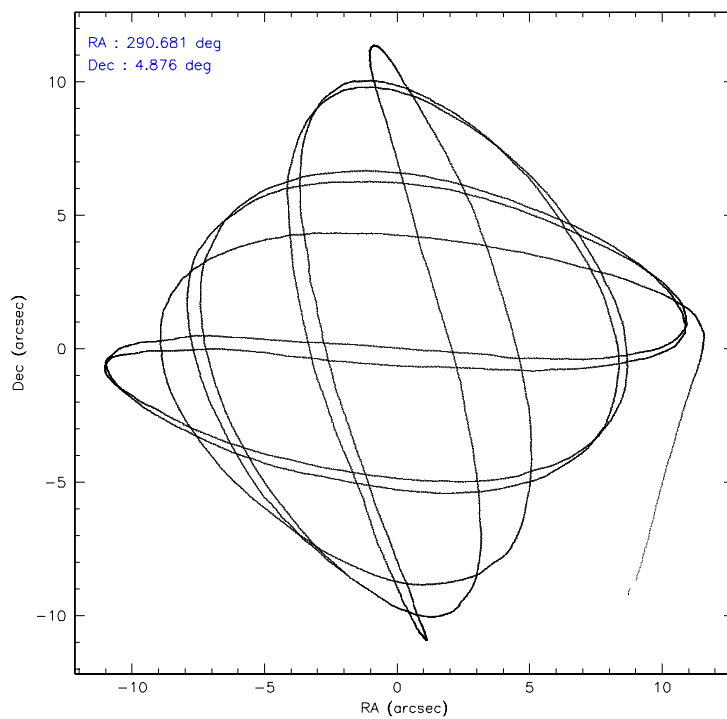
	ccd 3
level 1 events	15017
rejected events	10750
rejected %	71%

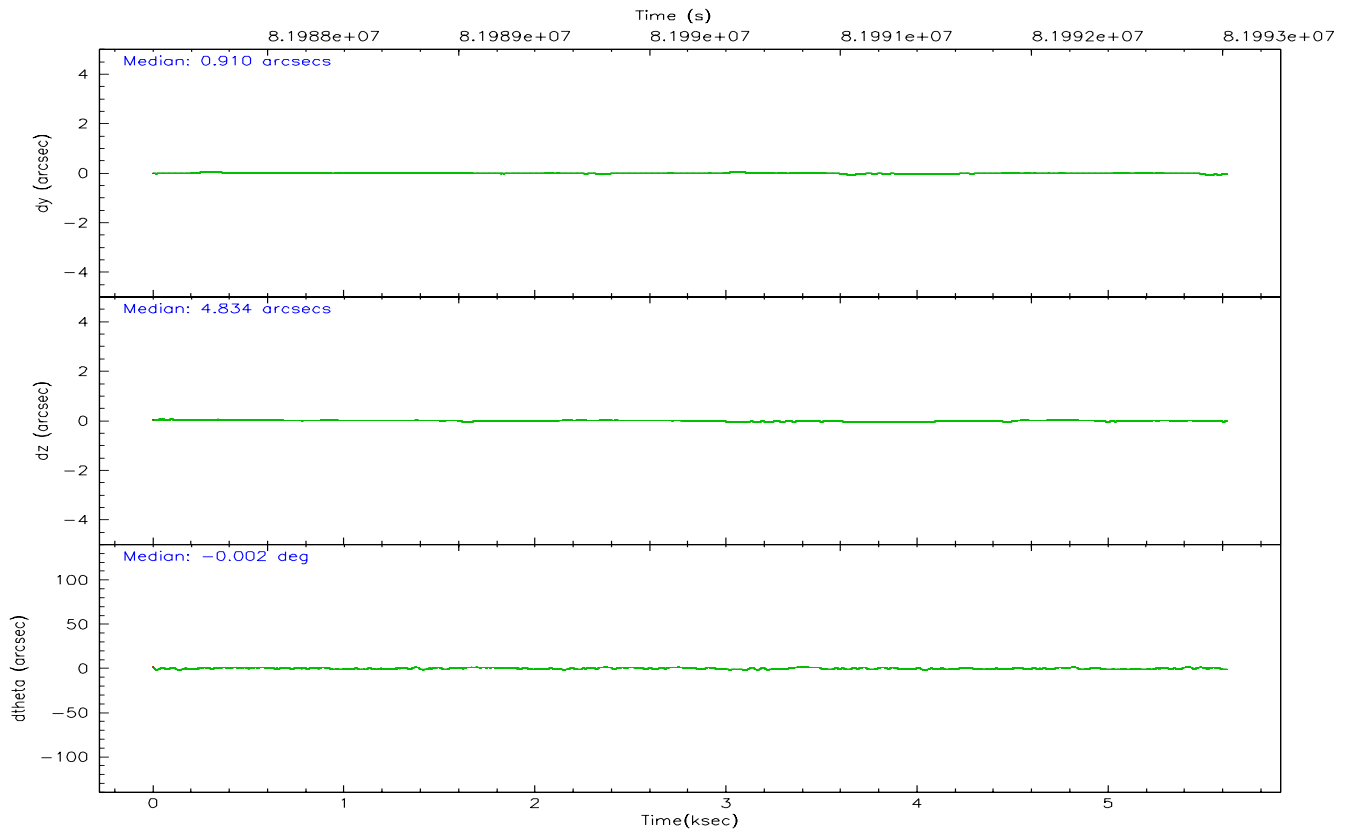
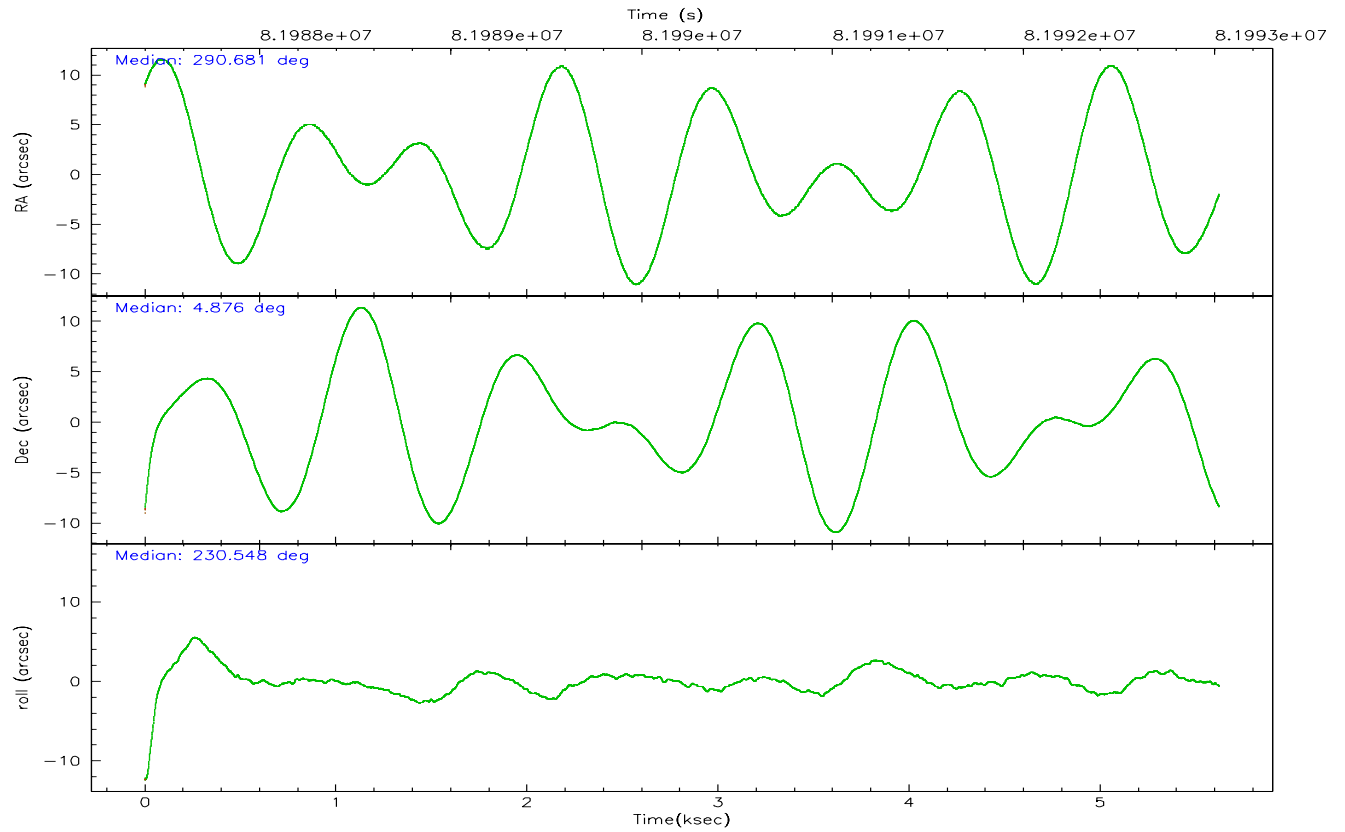
	ccd 3
grade 0 events	3408
	22%
grade 1 events	26
	0%
grade 2 events	417
	2%
grade 3 events	220
	1%
grade 4 events	209
	1%
grade 5 events	263
	1%
grade 6 events	217
	1%
grade 7 events	10257
	68%

2.2 Compared Parameters

Parameter	Planned	Actual	Parameter	Planned	Actual
Instrument	ACIS	ACIS	Obspar format version number	6	6
Detector	ACIS-3	ACIS-3	Obspar file type	PREDICTED	ACTUAL
Grating	NONE	NONE	Obspar update status	NONE	UPDATED
Data mode	VFAINT	VFAINT	Number of optional ACIS chips dropped	0	0
Observation mode	POINTING	POINTING	On-chip summing requested	N	N
Pointing RA	290.685939	290.6813391398507	Subarray requested	CUSTOM	1/4
Pointing Dec	4.903240	4.876096049203568	Subarray start row	1	1
Pointing Roll	230.343877	230.5529337548772	Subarray row count	256	256
SIM focus pos (mm)	-0.782348	-0.7809083437167272	Alternating exposures requested	N	N
SIM defocus (mm)	0	0.001439871863259334	Primary exposure time	0.000000	0.8
SIM translation stage pos (mm)	-233.592463	-233.5874344608287			
SIM translation stage offset (mm)	0	-0.005018542100998502			
Observation start time	81987724.184000	81986589.13293			
Observation start date	2000-08-06T22:21:00	2000-08-06T22:03:09			
Observation end time	81993024.184000	81993669.320693			
Observation end date	2000-08-06T23:49:20	2000-08-07T00:01:09			
Read mode	TIMED	TIMED			

2.3 Aspect



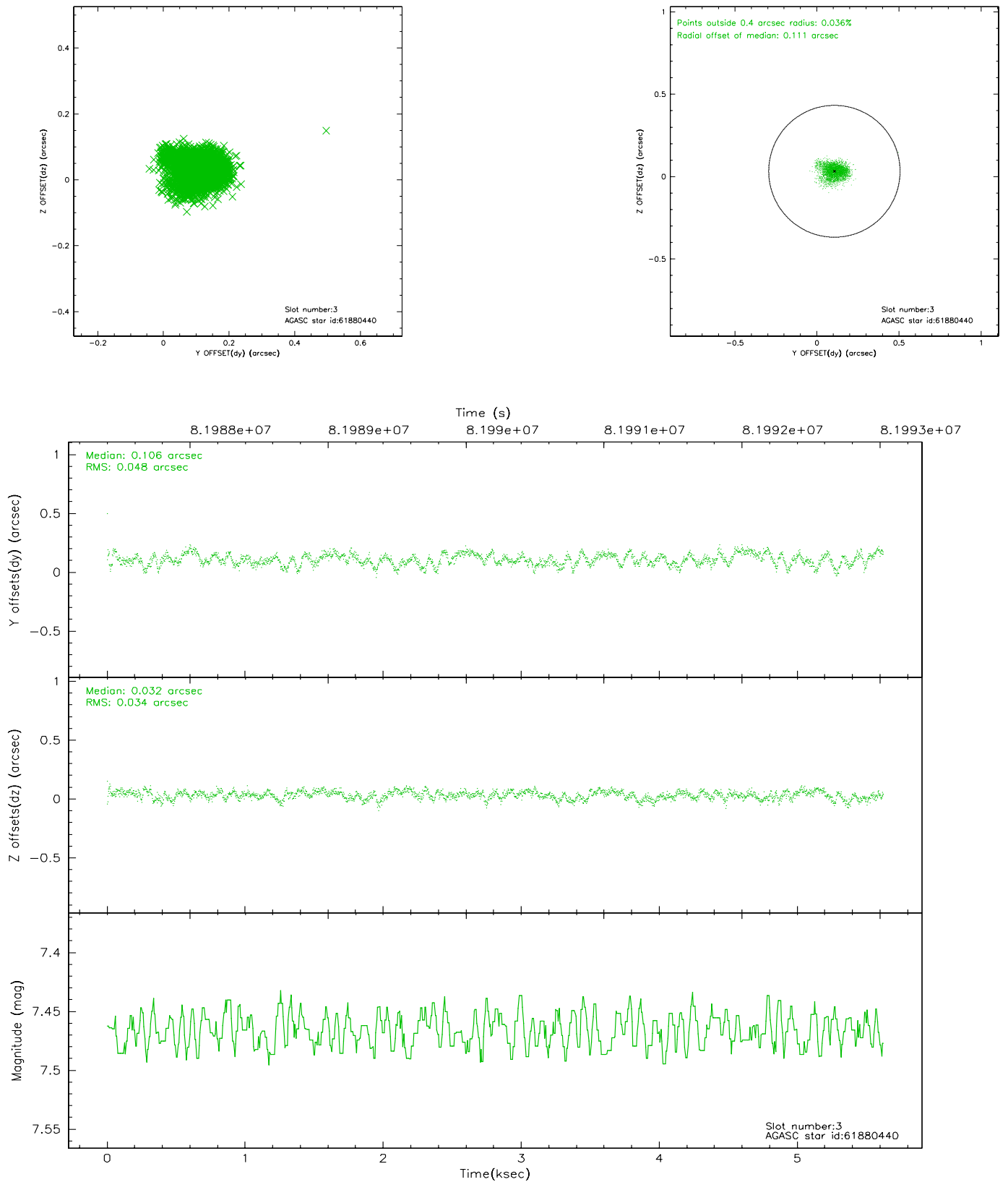


Slot Statistics

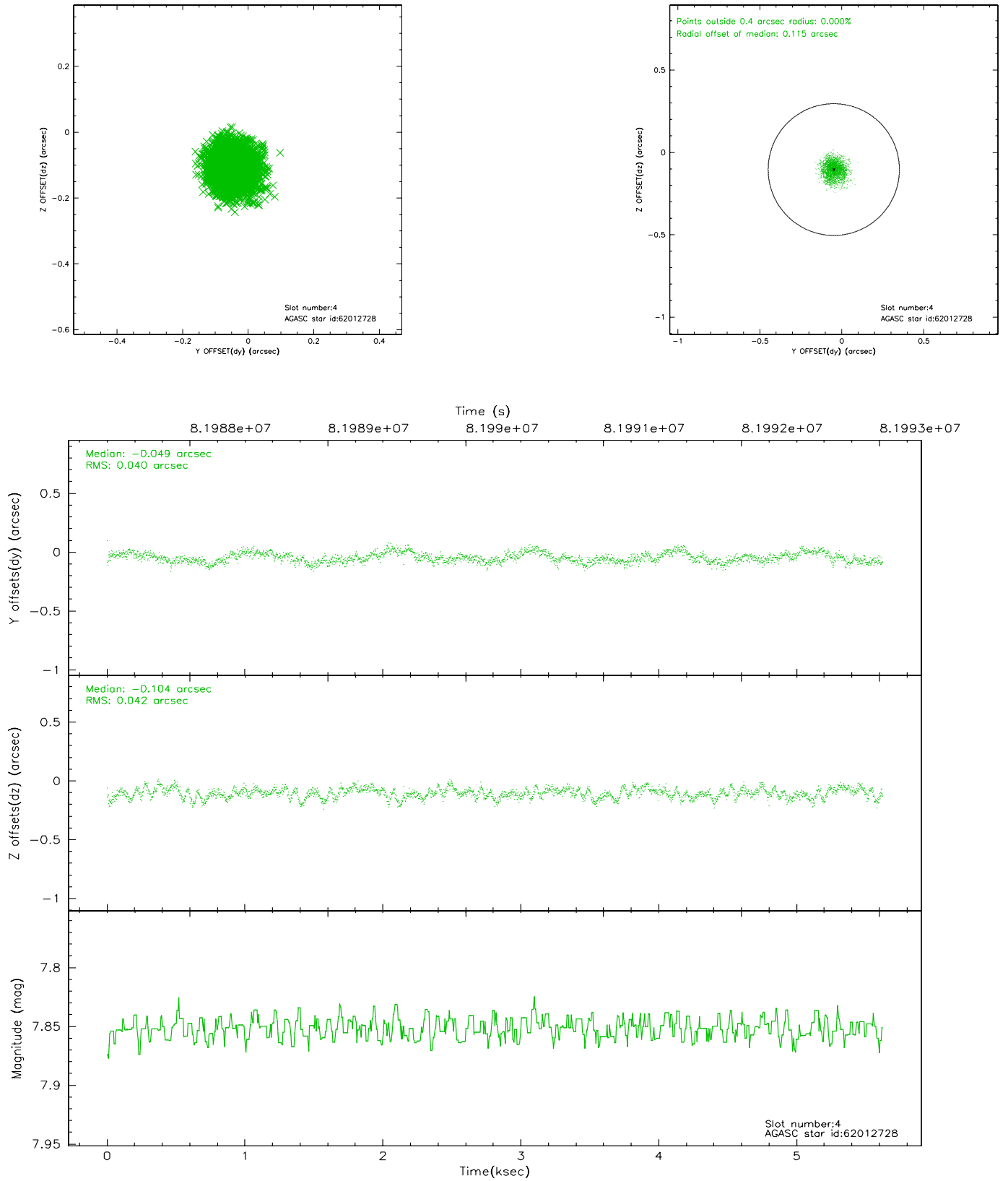
slot	status	id	mag	n_pts	med_dy	med_dz	dr1	dr2	ra	dec	mean_y	mean_z
0	FID	ACIS-I-2	7.15	1372	-0.015	-0.003	0.009	0.015	0.000000	0.000000	-755.25	-834.54
1	FID	ACIS-I-4	7.19	1371	-0.075	0.019	0.007	0.011	0.000000	0.000000	2158.28	1071.12
2	FID	ACIS-I-5	7.23	1372	-0.011	0.053	0.009	0.014	0.000000	0.000000	-1807.69	1070.23
3	GUIDE	61880440	7.47	2744	0.106	0.032	0.062	0.100	290.081203	4.777895	1732.01	-1382.01
4	GUIDE	62012728	7.85	2744	-0.049	-0.104	0.064	0.097	290.627648	4.597491	981.98	541.60
5	GUIDE	62044392	8.57	2743	0.046	-0.006	0.066	0.108	290.763860	4.614406	622.94	879.81
6	GUIDE	62043480	8.89	2744	-0.065	0.002	0.097	0.160	291.375882	4.831705	-1381.70	2069.95
7	GUIDE	62021832	9.22	2743	-0.054	0.081	0.074	0.120	290.889874	5.387344	-1808.28	-548.14

2.4 Star Slots

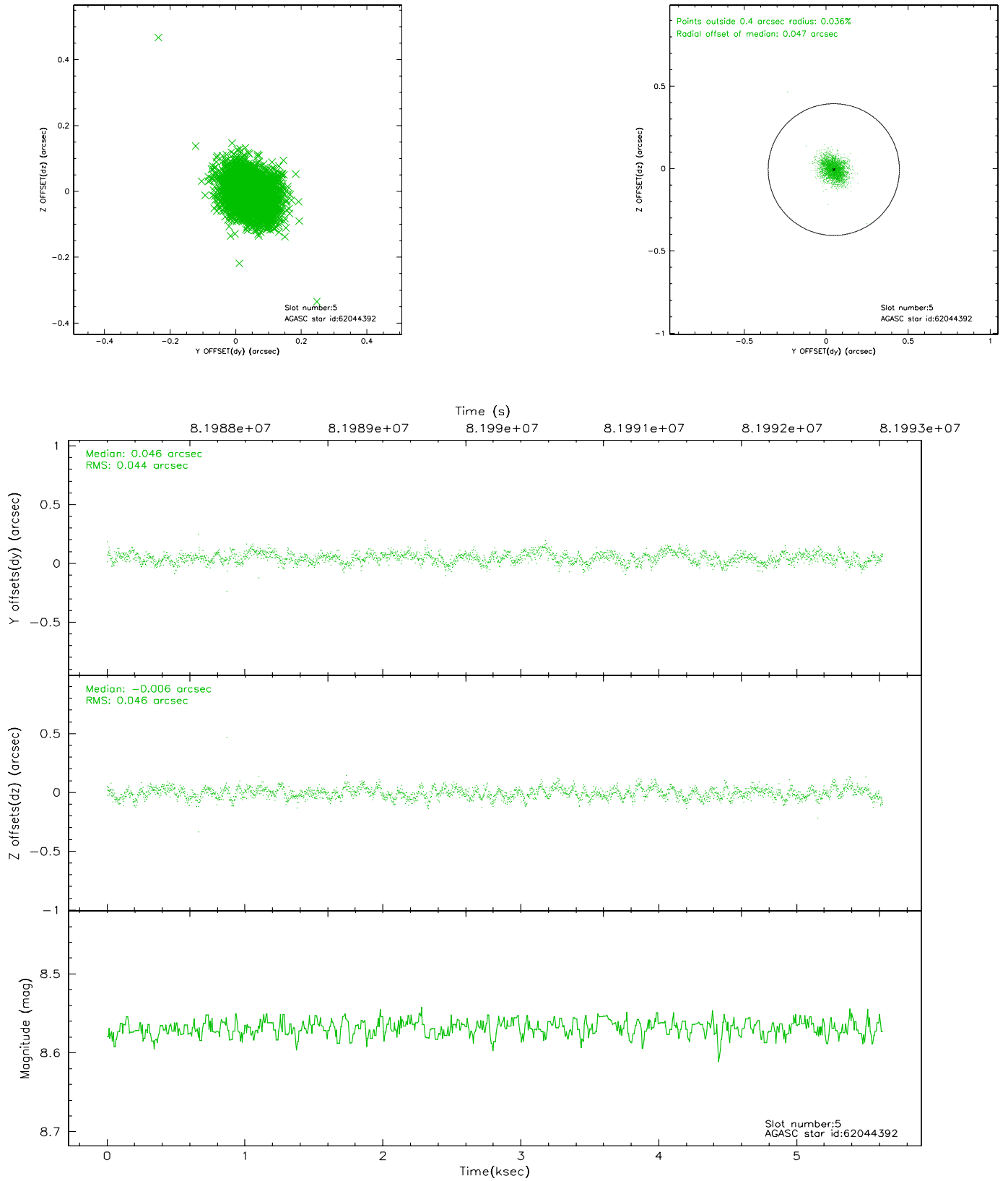
2.4.1 Slot 3



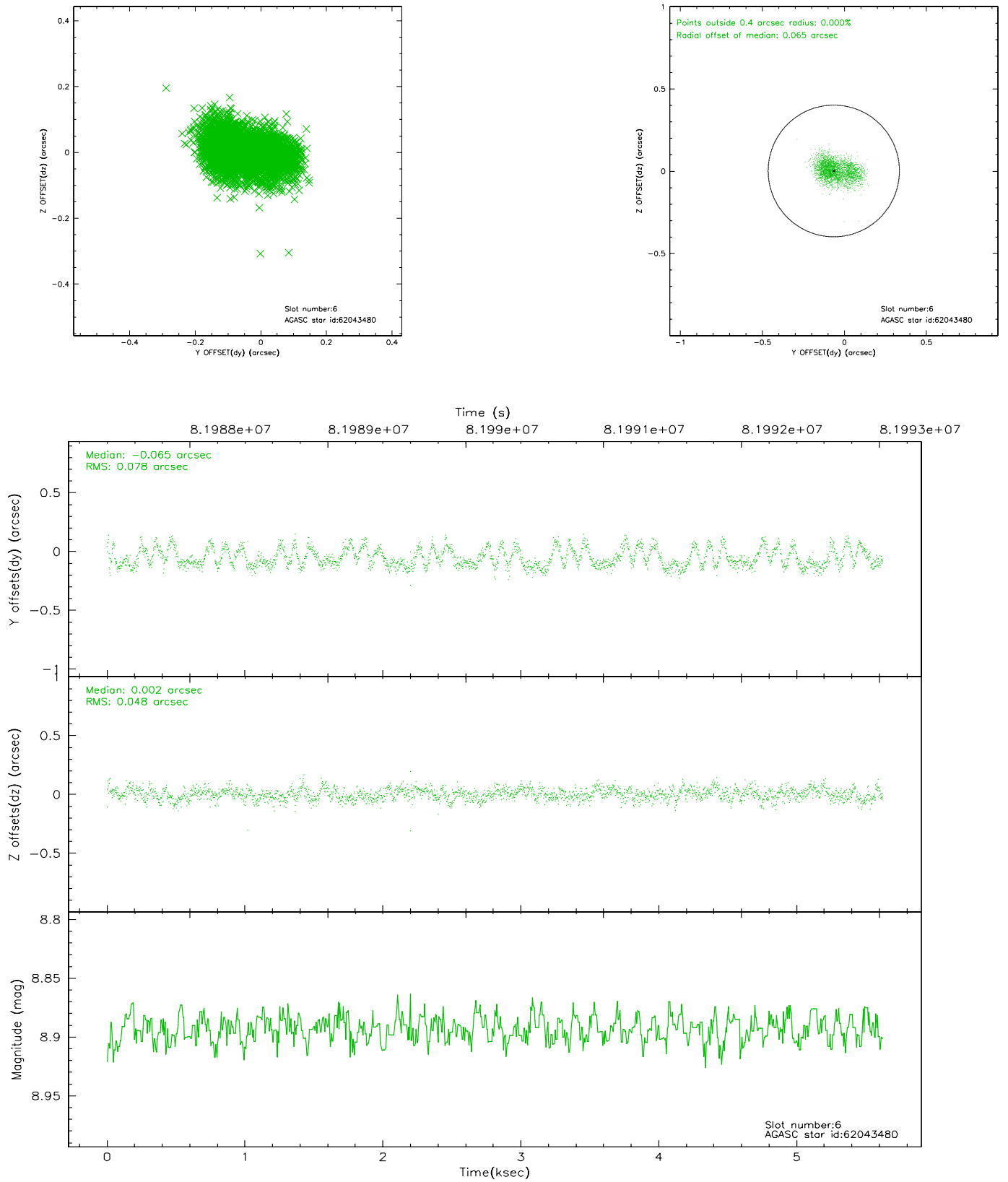
2.4.2 Slot 4



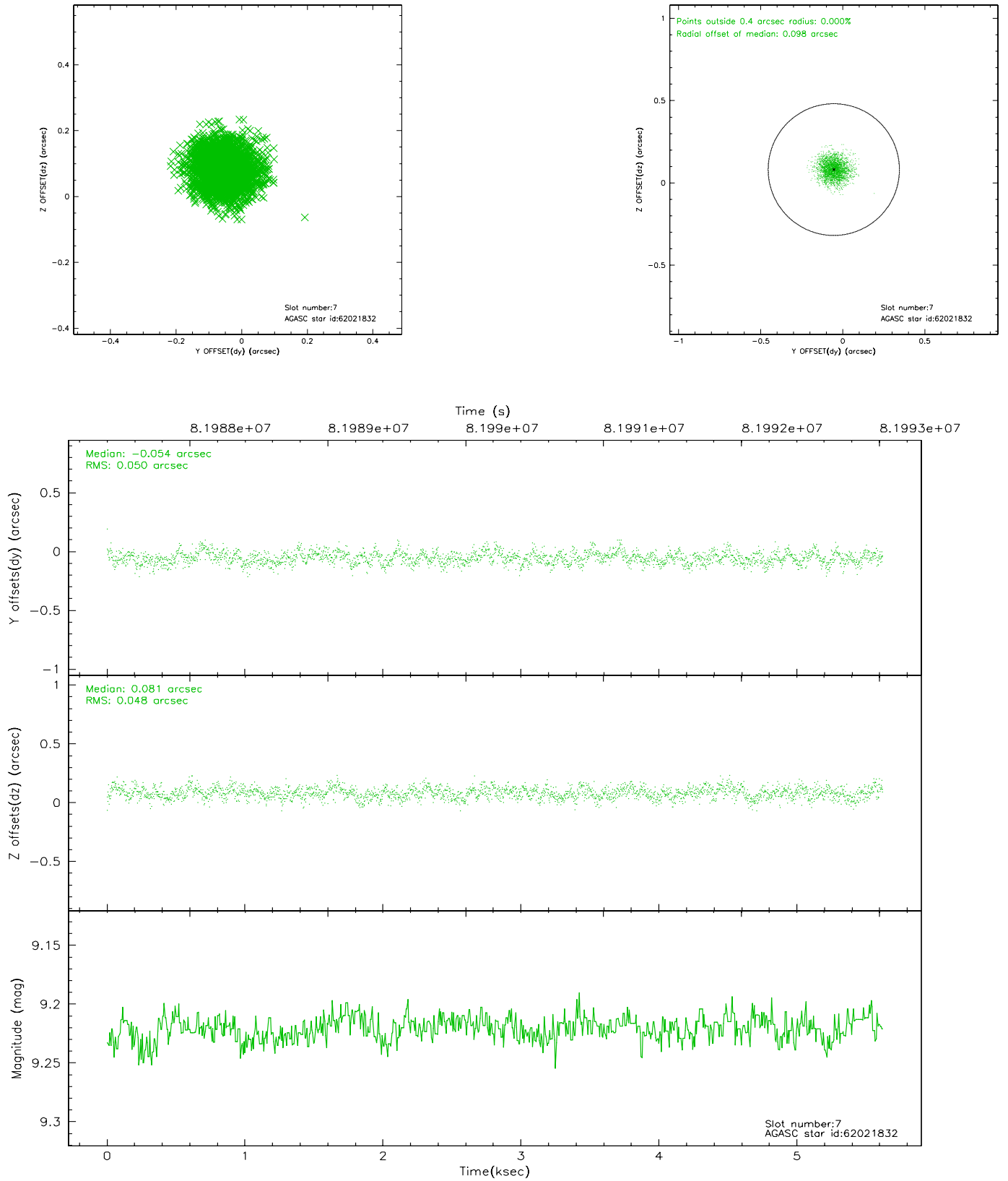
2.4.3 Slot 5



2.4.4 Slot 6

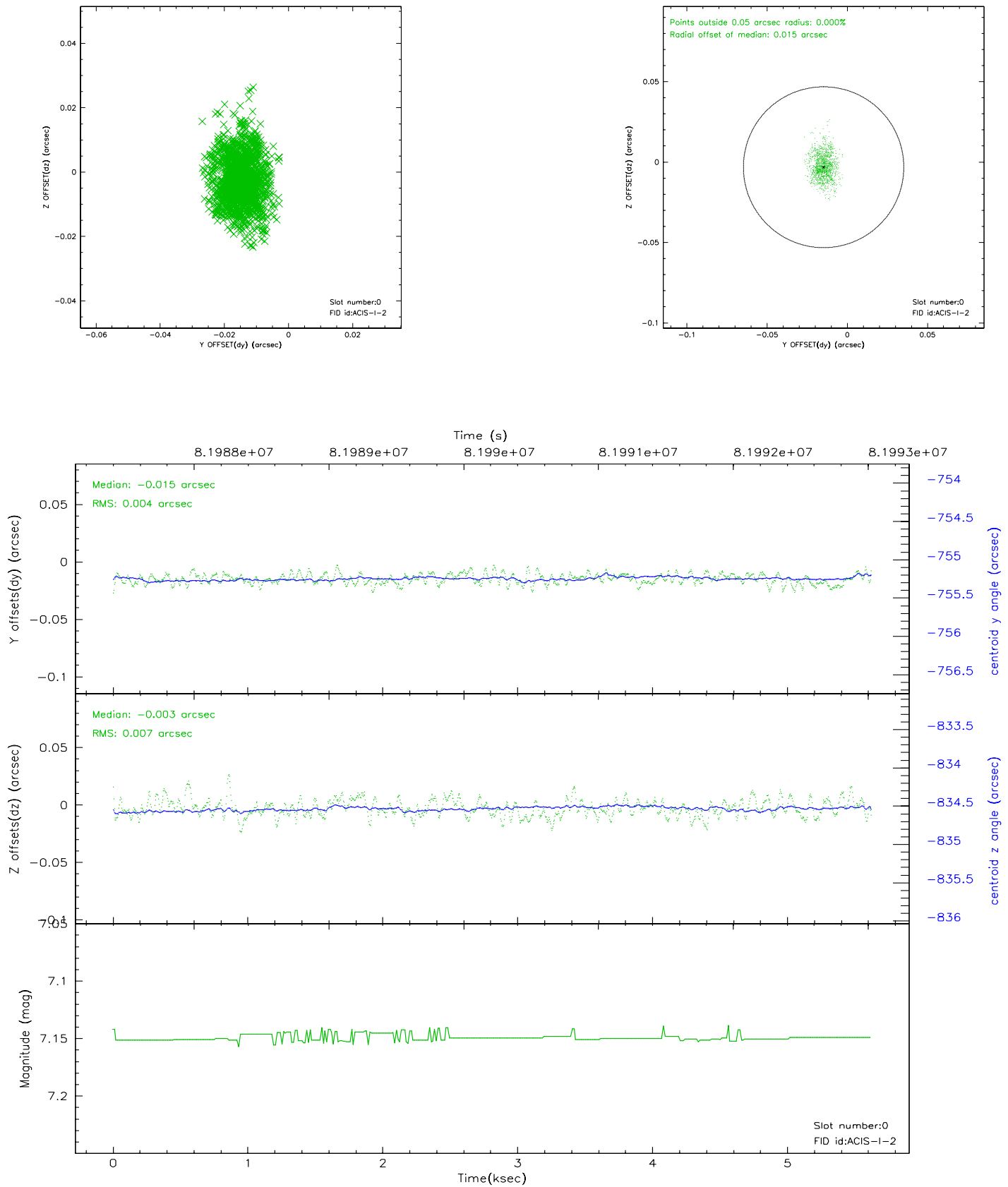


2.4.5 Slot 7

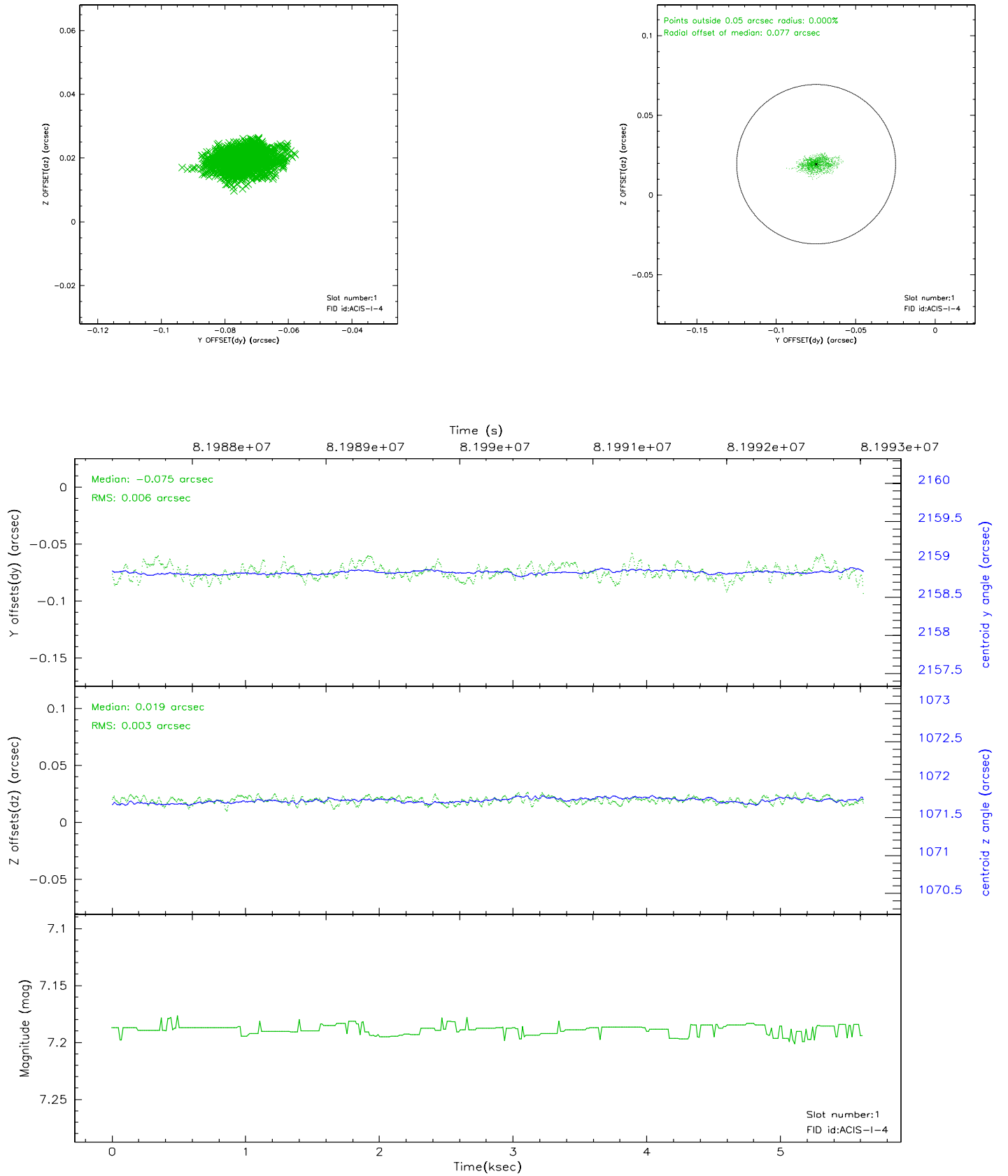


2.5 FID Slots

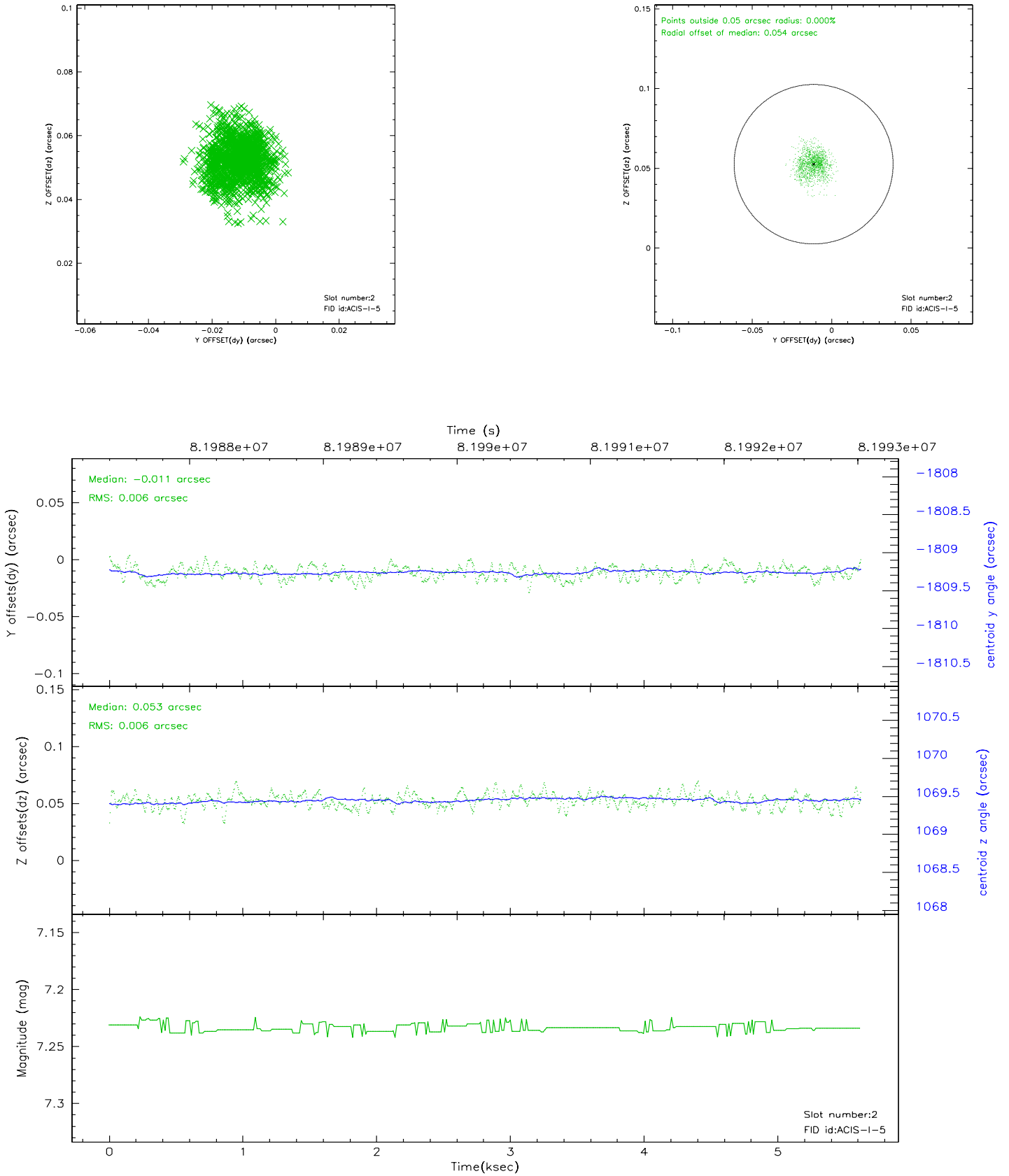
2.5.1 Slot 0



2.5.2 Slot 1

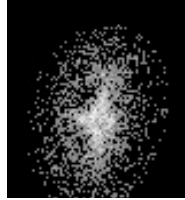


2.5.3 Slot 2



3 Point Sources

7.23 arcmin



A Summary

A.1 Status

V&V Scientist	Beth Sundheim
V&V Date (YYYY-MM-DD)	2007.06.04
V&V Edition	1
V&V Disposition and Status	OK
V&V Charge Time	5.619

A.2 Comments