

V&V Reference Report

L2 ASCDS Version : 10.4

Observation 16979 - L2 Version 2
Chandra X-Ray Center

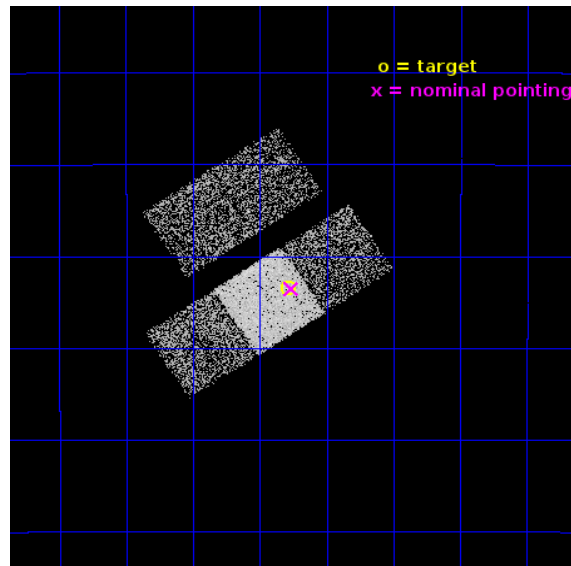
L2 Processing Date : Jun 15 2015

Contents

1	Front	2
2	OBI	3
2.1	OBI	3
2.1.1	Images	3
2.1.2	Bias	3
2.1.3	Parameters	4
2.1.4	Events	4
2.2	Compared Parameters	5
2.3	Aspect	6
2.4	Star Slots	9
2.4.1	Slot 3	9
2.4.2	Slot 4	10
2.4.3	Slot 6	11
2.4.4	Slot 7	12
2.5	FID Slots	13
2.5.1	Slot 0	13
2.5.2	Slot 1	14
2.5.3	Slot 2	15
A	Summary	16
A.1	Status	16
A.2	Comments	16

1 Front

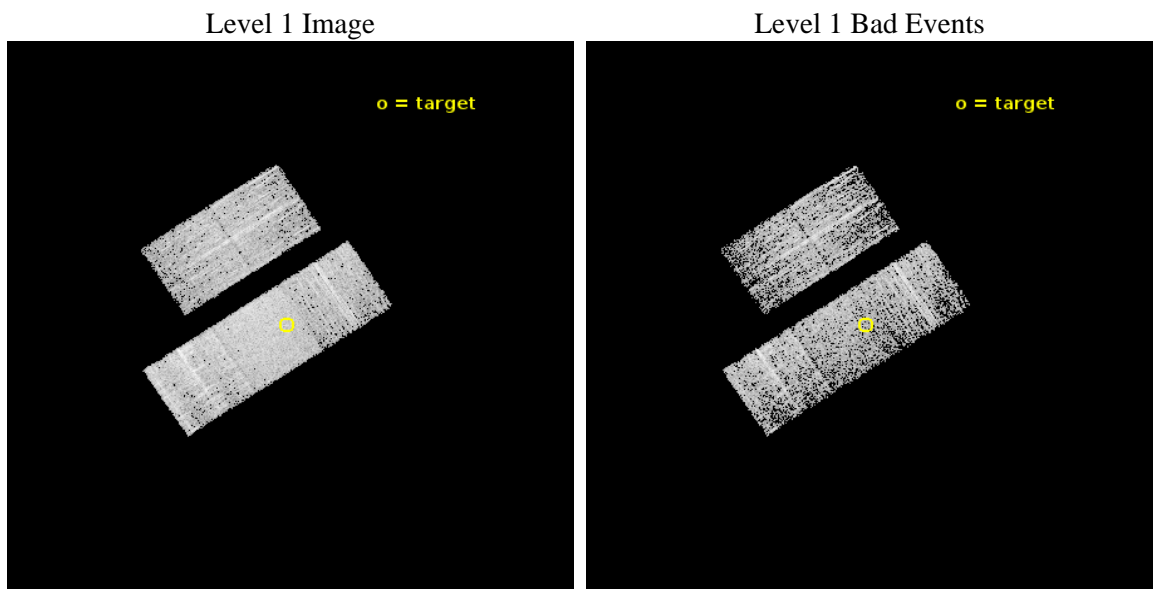
seq_num	601172	Sequence number
obs_id	16979	Observation id
title	Super-massive black holes and nuclear star clusters in late type galaxies	Proposal title
observer	Elena Gallo	Principal investigator
object	ESO548-G29	Source name
dtcycle	0	
cycle	P	events from which exps? Prim/Second/Both
ra_targ	52.696667	Observer's specified target RA [deg]
dec_targ	-21.058222	Observer's specified target Dec [deg]
ra_nom	52.690963735075	Nominal RA [deg]
dec_nom	-21.058883396594	Nominal Dec [deg]
roll_nom	146.58957418763	Nominal Roll [deg]
revision	2	Processing version of data
ontime	4265.6000329256	Sum of GTIs [s]
livetime	4209.8668282064	Livetime [s]
ontime2	4265.4581326246	Sum of GTIs [s]
ontime3	4265.5402126312	Sum of GTIs [s]
ontime6	4265.5812526941	Sum of GTIs [s]
ontime7	4265.6000329256	Sum of GTIs [s]
ontime8	4265.4991726875	Sum of GTIs [s]
l2events	22864	Number of level 2 events



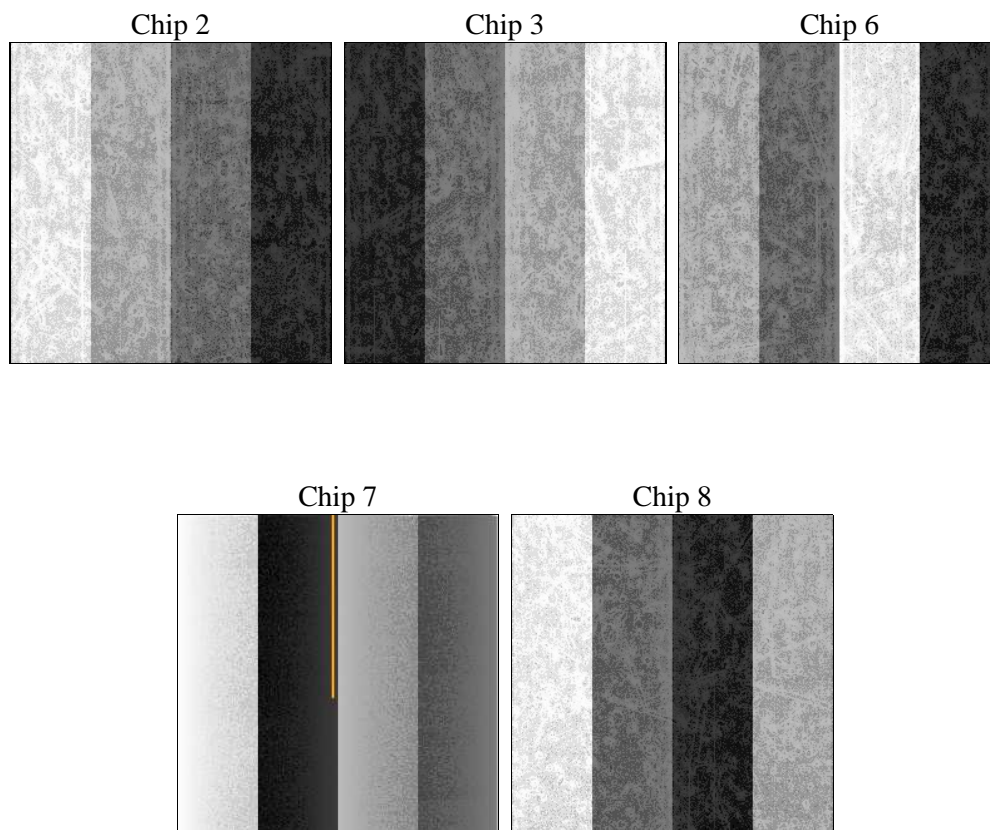
2 OBI

2.1 OBI

2.1.1 Images



2.1.2 Bias



2.1.3 Parameters

obi_num	0	Obi number	sched_exp_time	4200.000000	[s] Scheduled observation exposure time
ascdsver	10.4	Processing system revision	ontime	4265.6000329256	Sum of GTIs [s]
caldsver	4.6.7	 	ontime2	4265.4581326246	Sum of GTIs [s]
date	2015-06-15T22:49:05	Date and time of file creation	ontime3	4265.5402126312	Sum of GTIs [s]
revision	2	Processing version of data	ontime6	4265.5812526941	Sum of GTIs [s]
			ontime7	4265.6000329256	Sum of GTIs [s]
			ontime8	4265.4991726875	Sum of GTIs [s]
			l1events	124433	Number of level 1 events

2.1.4 Events

	ccd 2	ccd 3	ccd 6	ccd 7	ccd 8
level 1 events	21894	20301	22745	30315	29178
rejected events	19242	17720	19943	16882	20848
rejected %	87%	87%	87%	55%	71%

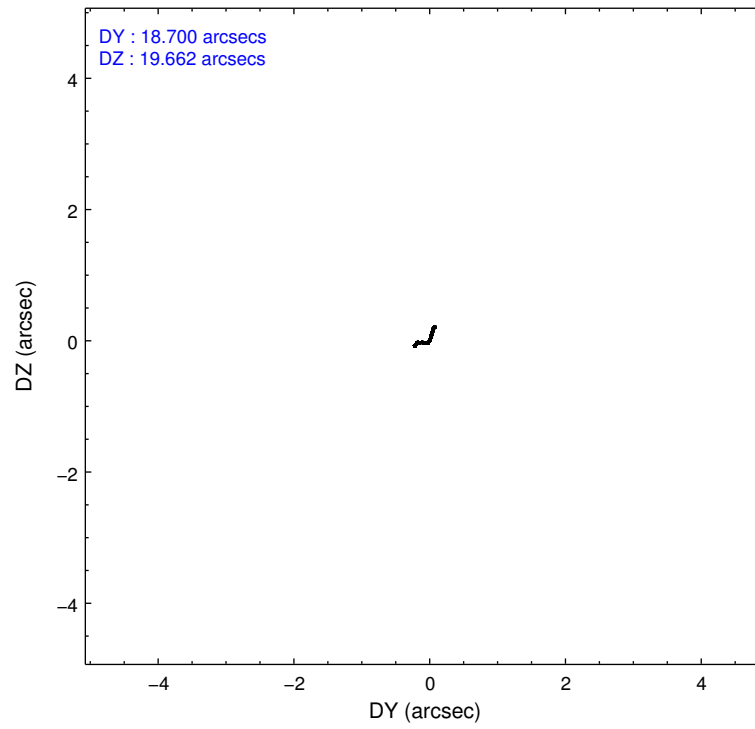
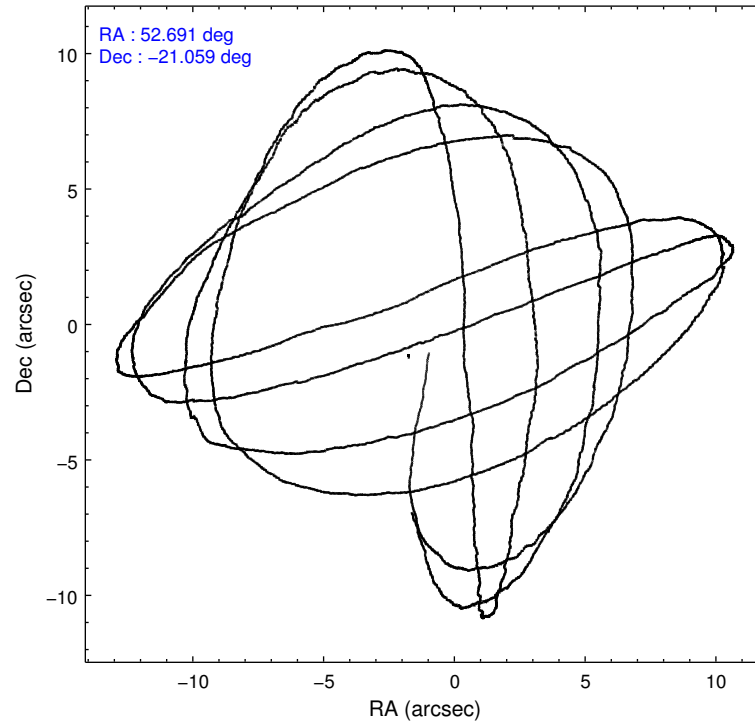
	ccd 2	ccd 3	ccd 6	ccd 7	ccd 8
grade 0 events	979	966	1011	1246	2746
	4%	4%	4%	4%	9%
grade 1 events	11	13	12	34	23
	0%	0%	0%	0%	0%
grade 2 events	650	557	653	2881	1839
	2%	2%	2%	9%	6%
grade 3 events	256	266	254	1224	965
	1%	1%	1%	4%	3%
grade 4 events	268	270	244	1127	921
	1%	1%	1%	3%	3%
grade 5 events	928	1153	1083	3029	1625
	4%	5%	4%	9%	5%
grade 6 events	505	527	647	6981	1863
	2%	2%	2%	23%	6%
grade 7 events	18297	16549	18841	13793	19196
	83%	81%	82%	45%	65%

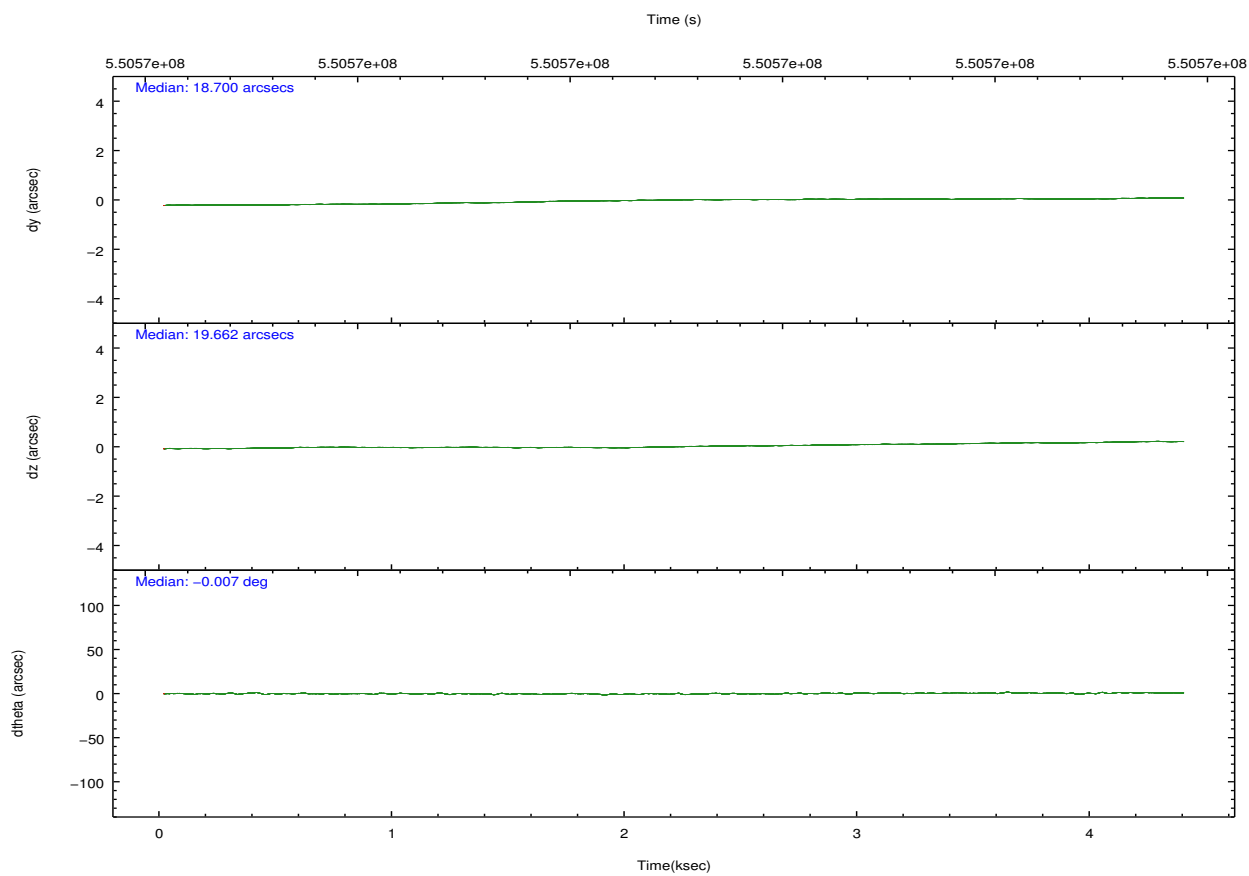
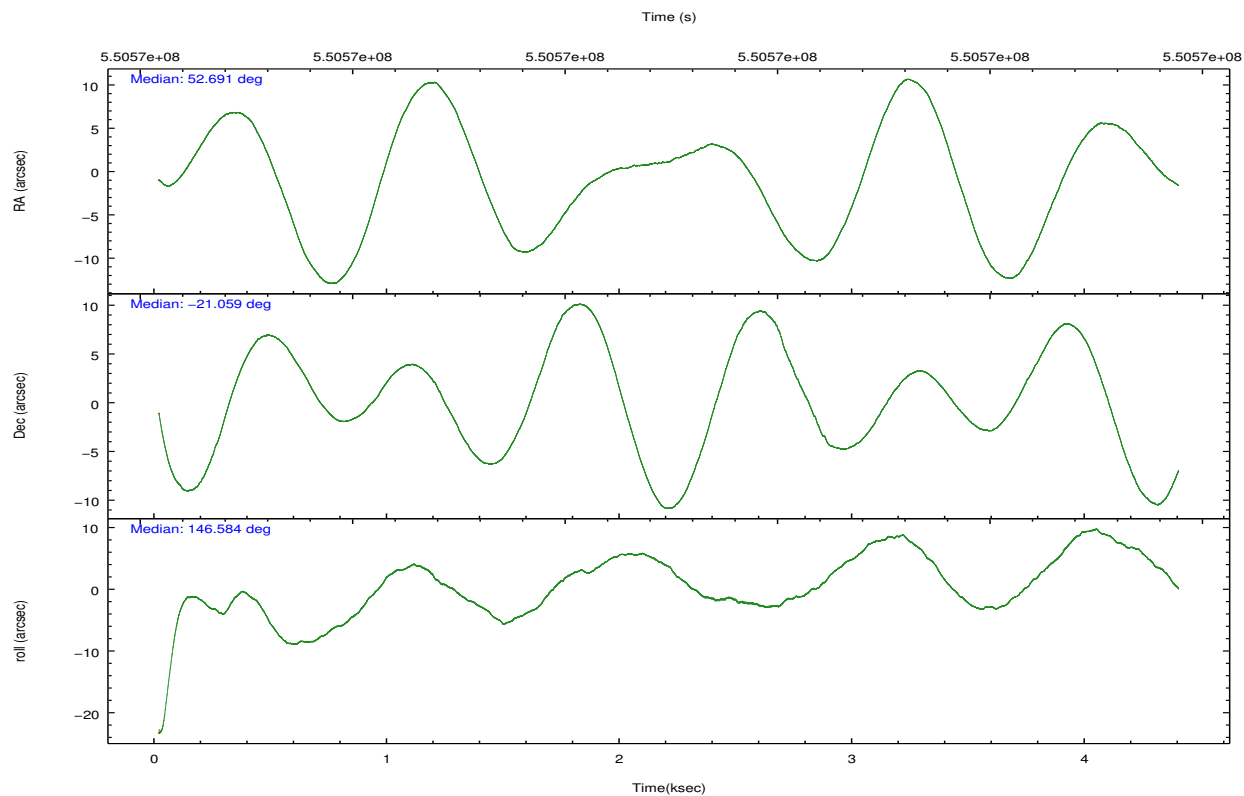
2.2 Compared Parameters

Parameter	Planned	Actual
Instrument	ACIS	ACIS
Detector	ACIS-23678	ACIS-23678
Grating	NONE	NONE
Data mode	FAINT	FAINT
Observation mode	POINTING	POINTING
[deg] Pointing RA	52.720248	52.690963735075
[deg] Pointing Dec	-21.060018	-21.0588833965943
[deg] Pointing Roll	146.443532	146.5895741876263
[mm] SIM focus pos	-0.684267	-0.6828225247311905
[mm] SIM defocus	0	0.001444936568705701
[mm] SIM translation stage pos	-190.132523	-190.1400660498719
[mm] SIM translation stage offset	0	0.00754346686406393
[s] Observation start time (MET)	550569486.184000	550567872.5792201
Observation start date	2015-06-13T07:56:59	2015-06-13T07:31:12
[s] Observation end time (MET)	550573686.184000	550574814.39211
Observation end date	2015-06-13T09:06:59	2015-06-13T09:26:54
Read mode	TIMED	TIMED

Parameter	Planned	Actual
Obspar format version number	7	7
Obspar file type	PREDICTED	ACTUAL
Obspar update status	NONE	UPDATED
CCD I0 on	N	N
CCD I1 on	N	N
CCD I2 on	O2	Y
CCD I3 on	O1	Y
CCD S0 on	N	N
CCD S1 on	N	N
CCD S2 on	Y	Y
CCD S3 on	Y	Y
CCD S4 on	Y	Y
CCD S5 on	N	N
Number of optional ACIS chips dropped	0	0
On-chip summing requested	N	N
Subarray requested	NONE	NONE
Alternating exposures requested	N	N
[s] Primary exposure time	0.000000	3.1

2.3 Aspect



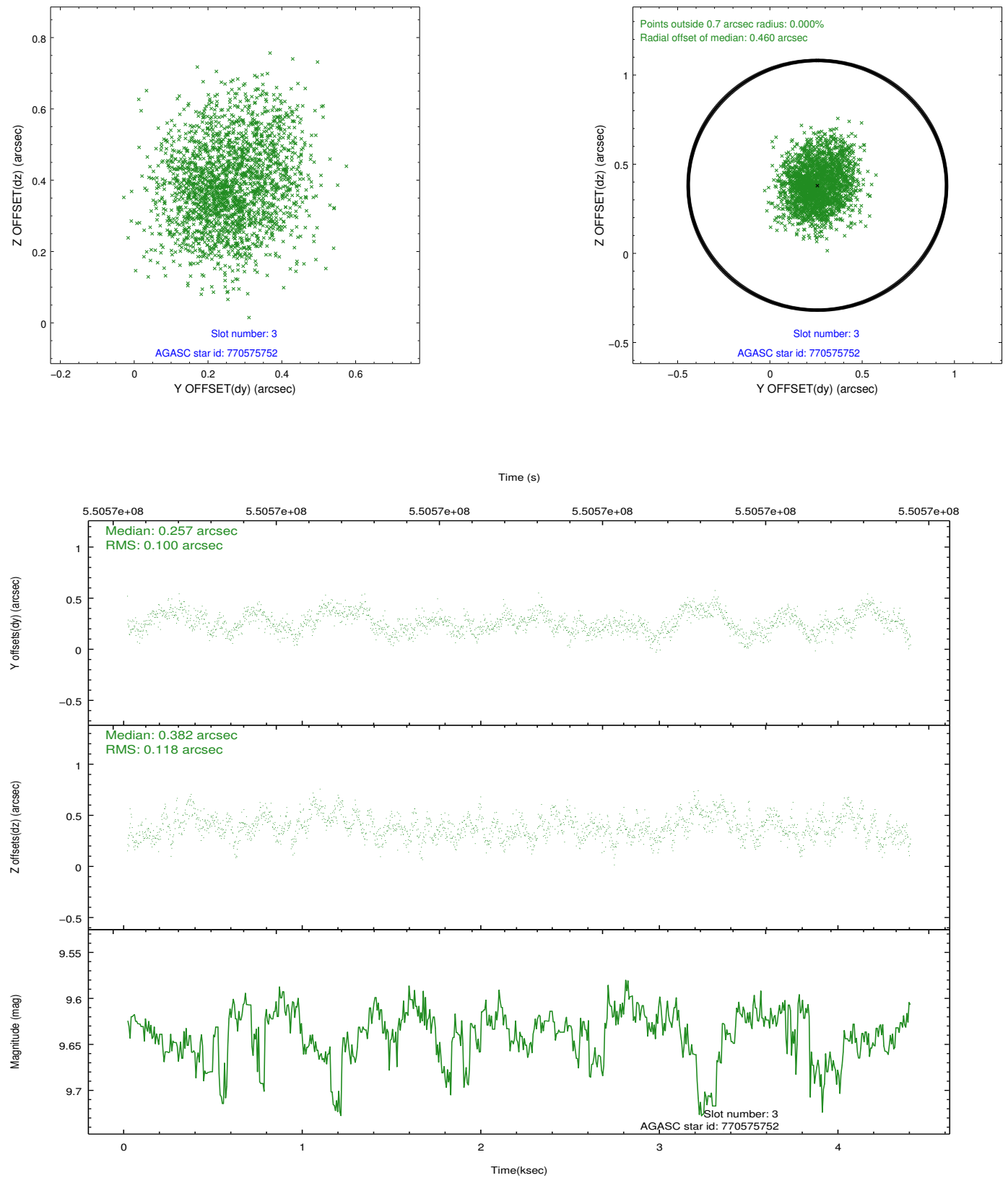


Slot Statistics

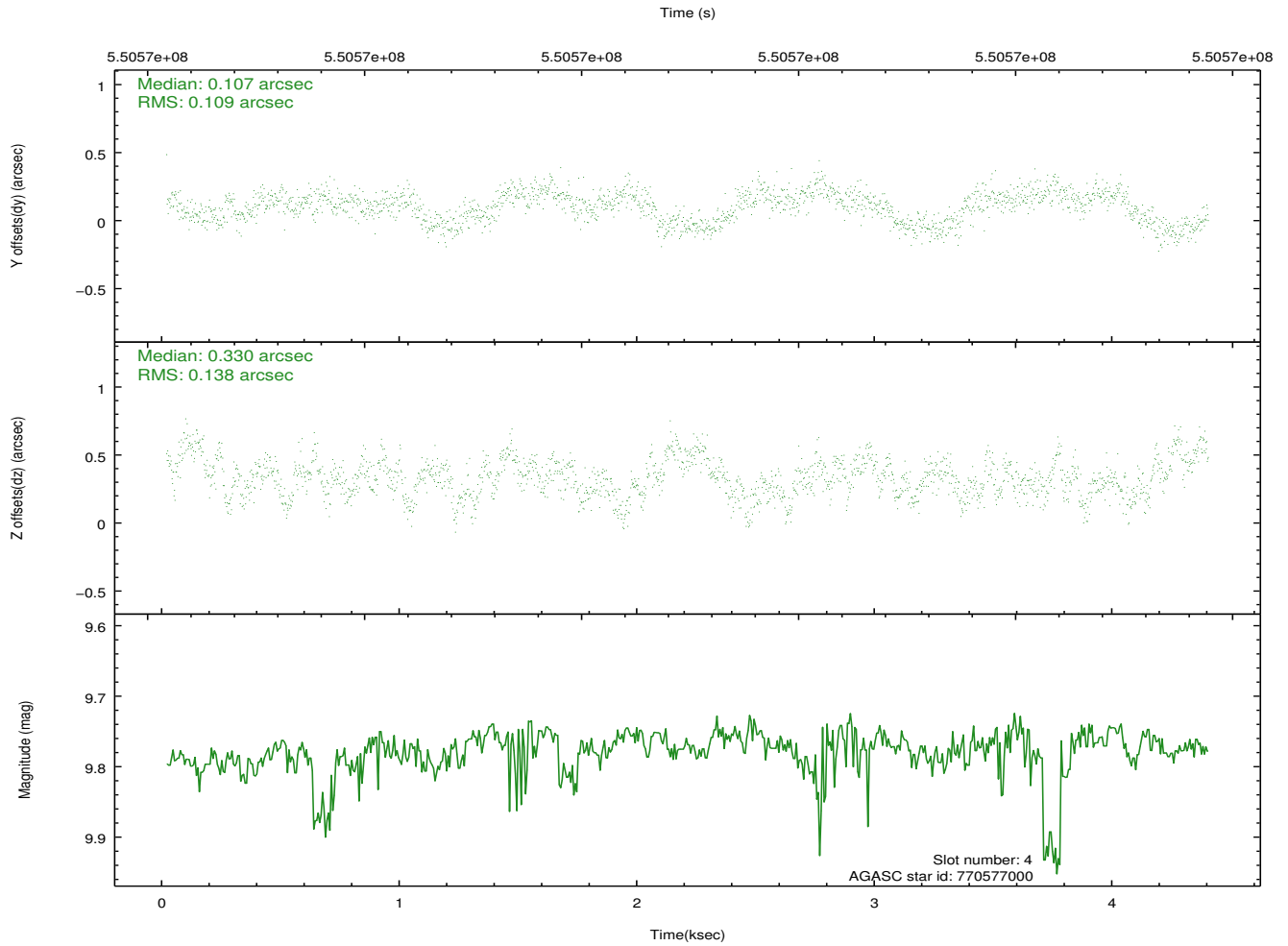
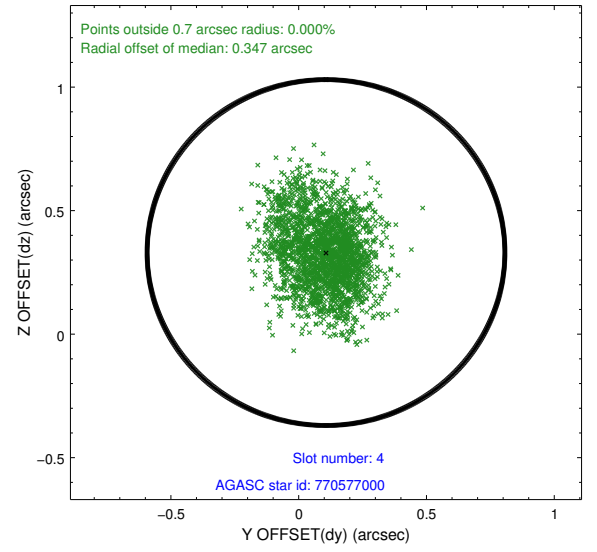
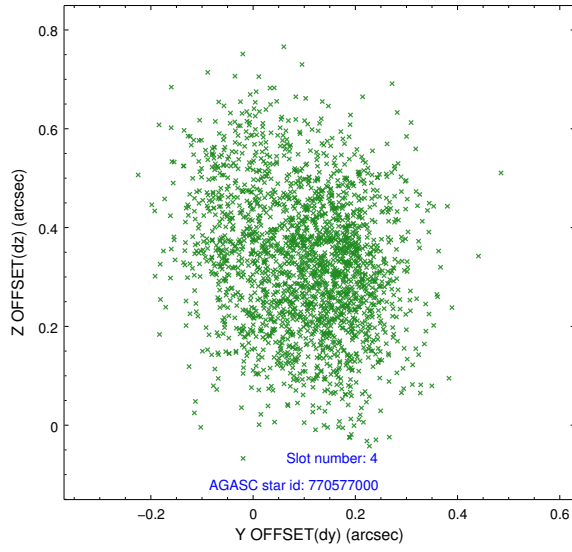
slot	status	used	id	mag	n_pts	med_dy	med_dz	dr1	dr2	ra	dec	mean_y	mean_z
0	FID		ACIS-S-1	7.04	1070	0.115	-0.049	0.008	0.013	0.000000	0.000000	924.48	-1736.86
1	FID		ACIS-S-5	7.07	1070	-0.250	0.060	0.006	0.009	0.000000	0.000000	-1824.15	159.27
2	FID		ACIS-S-6	7.17	1070	0.113	0.001	0.010	0.015	0.000000	0.000000	388.43	804.82
3	GUIDE	used	770575752	9.64	2139	0.257	0.382	0.167	0.266	53.244440	-20.781547	-916.40	-1807.92
4	GUIDE	used	770577000	9.78	2137	0.107	0.330	0.190	0.305	53.105252	-20.605778	-177.30	-2078.77
5	OMITTED			0.00	0	0.000	0.000	0.000	0.000	0.000000	0.000000	0.00	0.00
6	GUIDE	used	770581640	7.81	2140	-0.392	-0.408	0.120	0.180	52.322400	-21.371182	491.36	1670.85
7	GUIDE	used	770581880	9.60	2138	0.034	-0.321	0.145	0.247	52.016479	-20.947102	2194.70	974.26

2.4 Star Slots

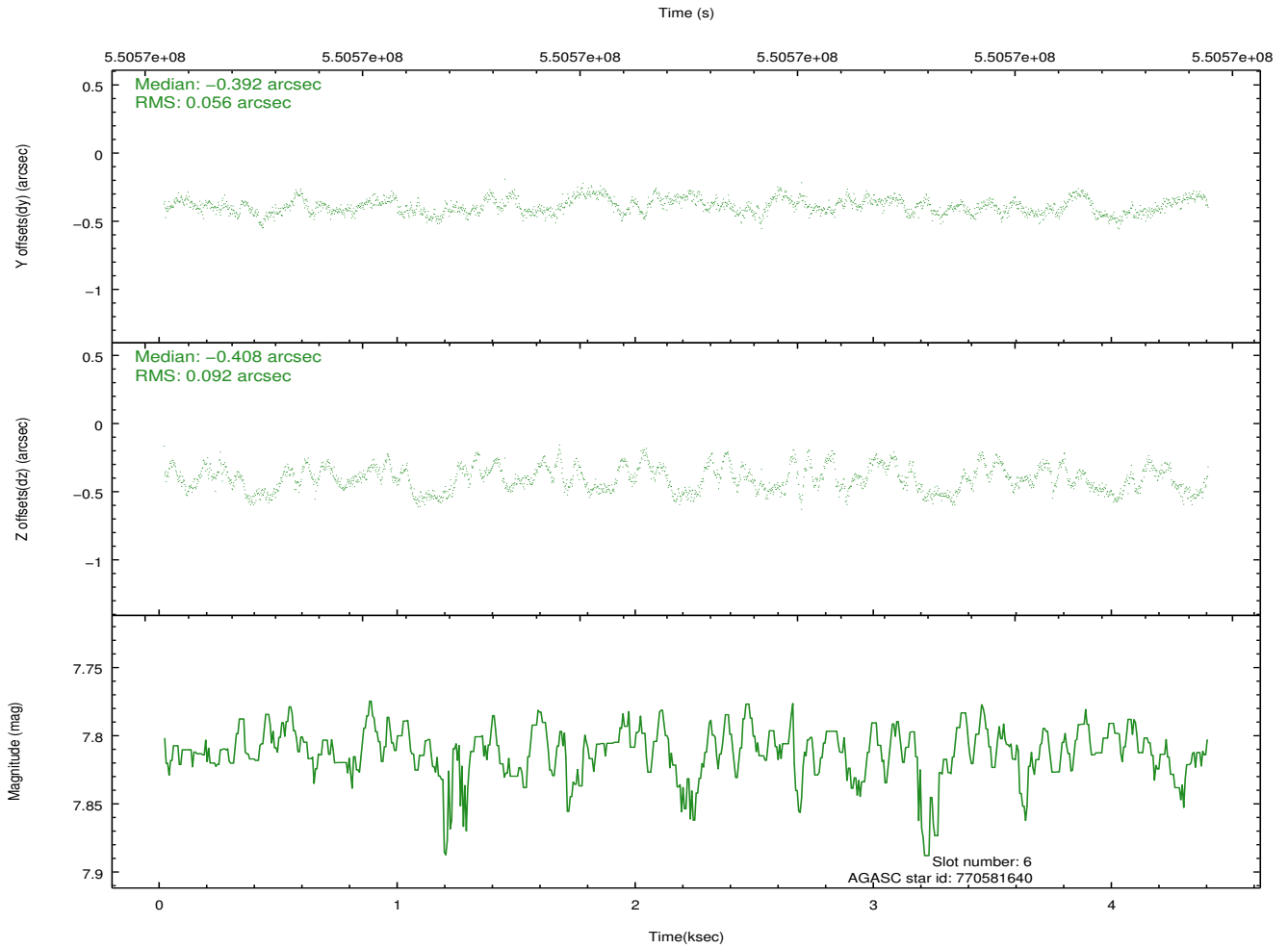
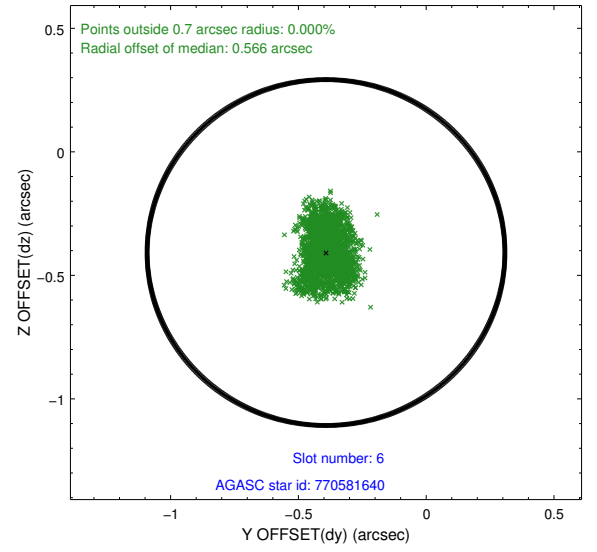
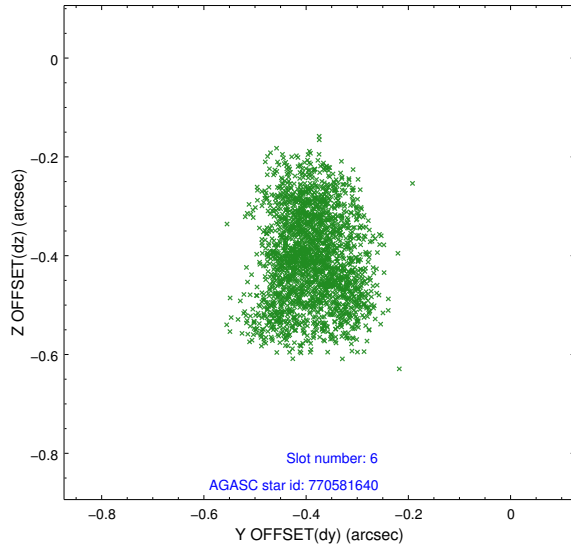
2.4.1 Slot 3



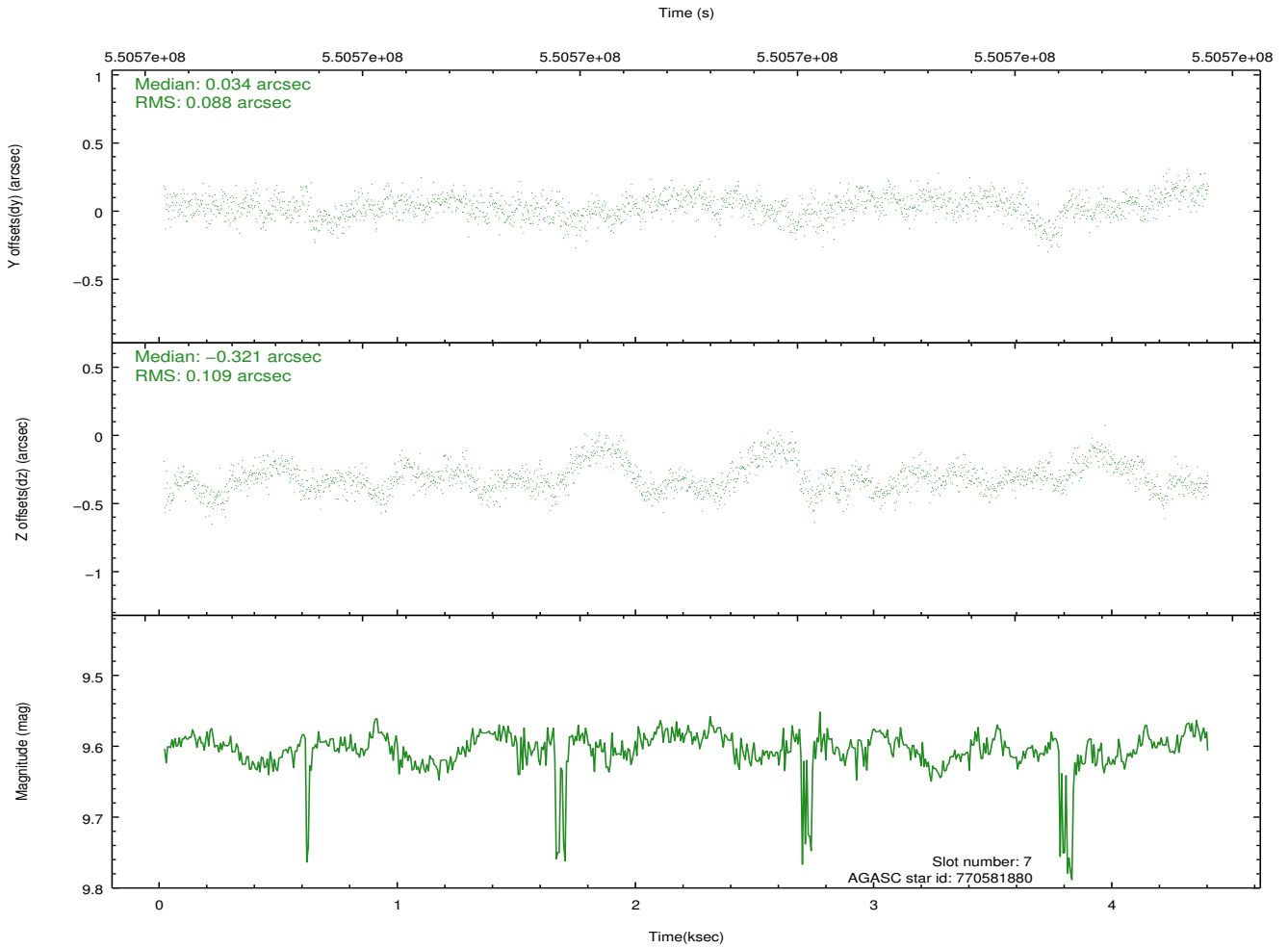
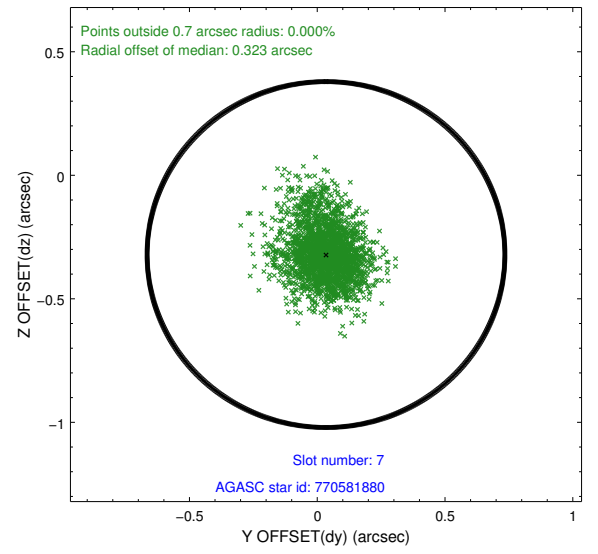
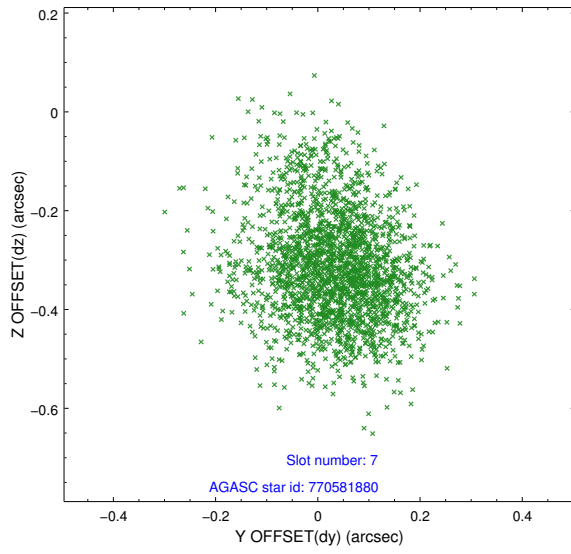
2.4.2 Slot 4



2.4.3 Slot 6

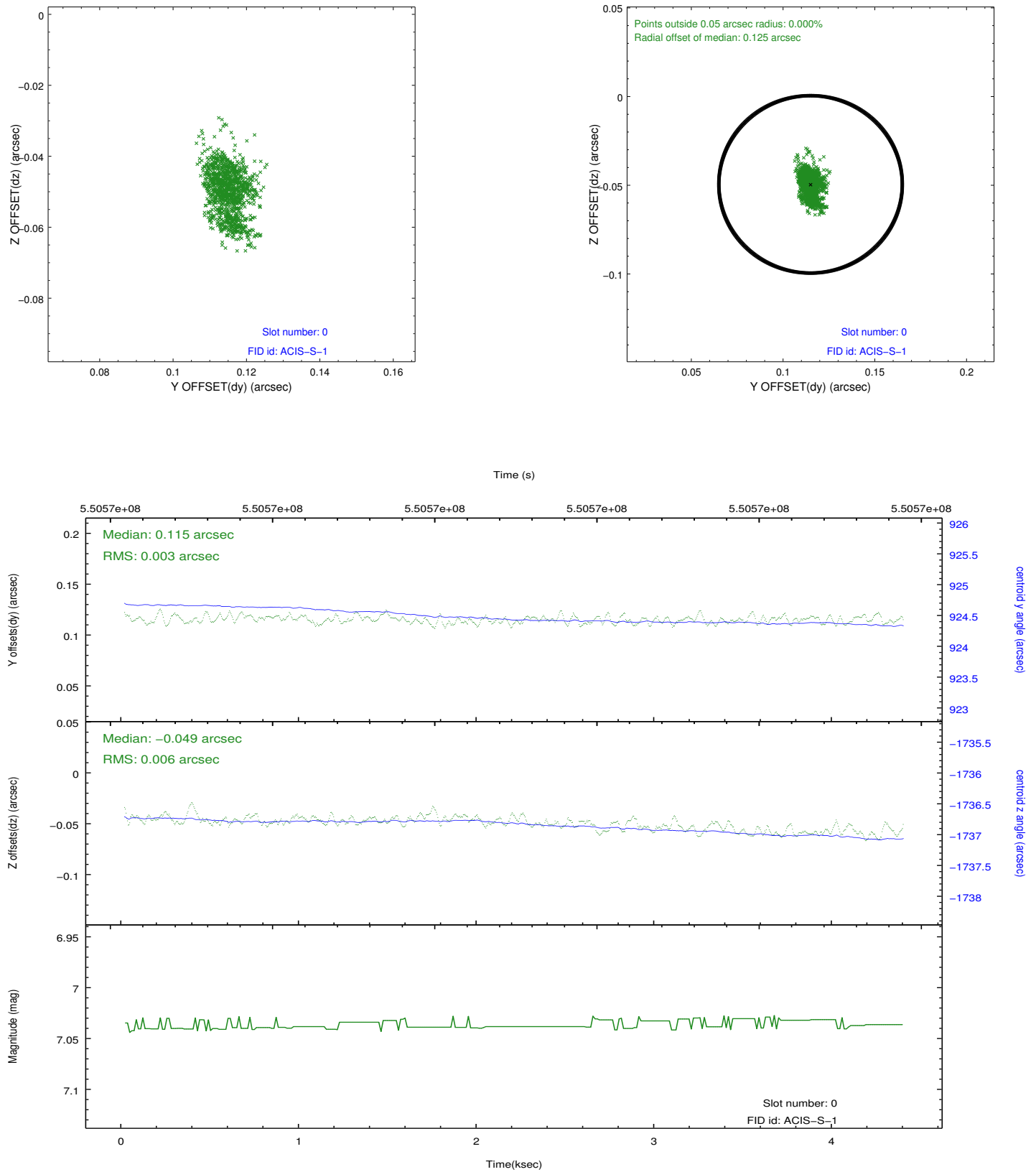


2.4.4 Slot 7

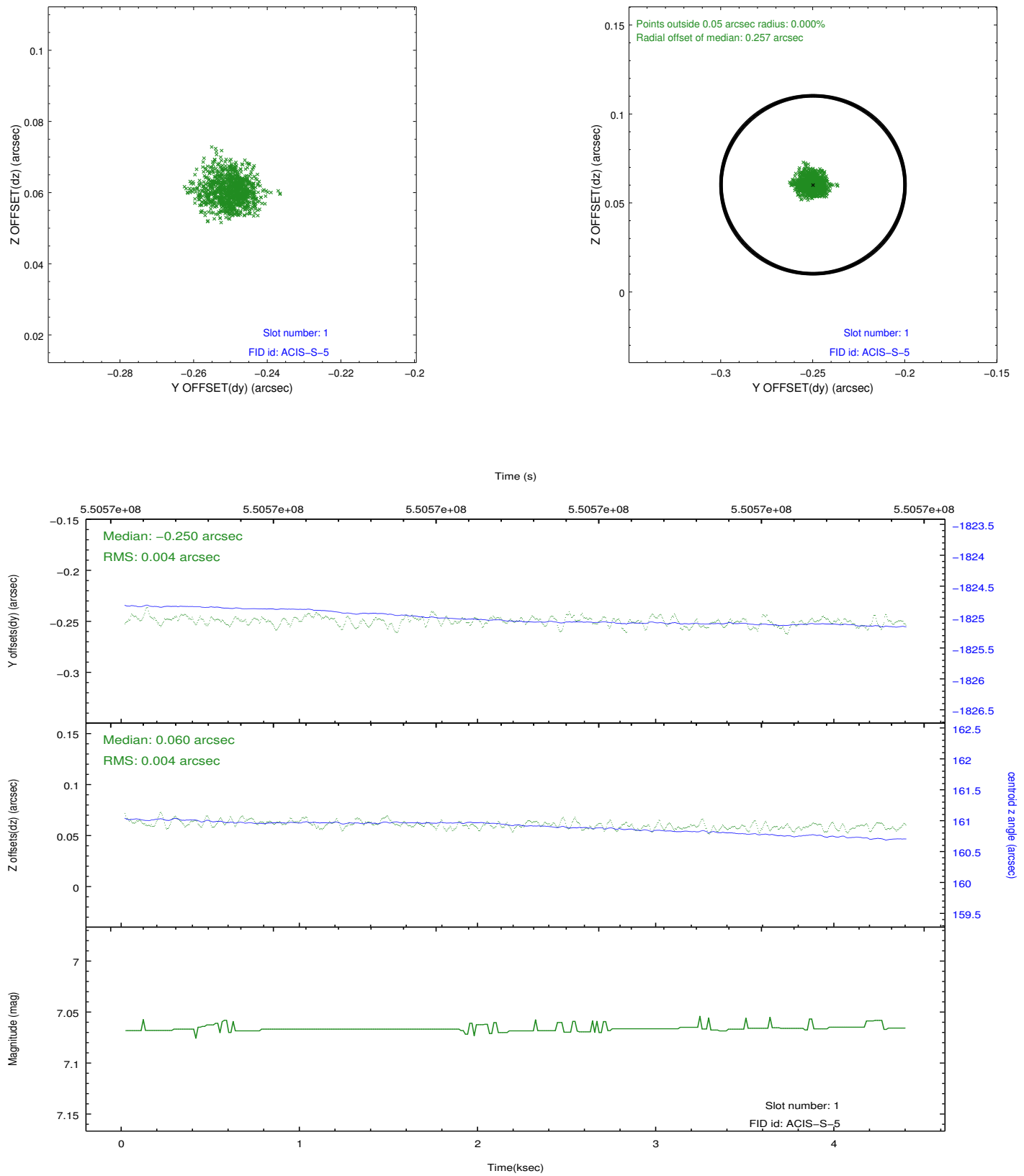


2.5 FID Slots

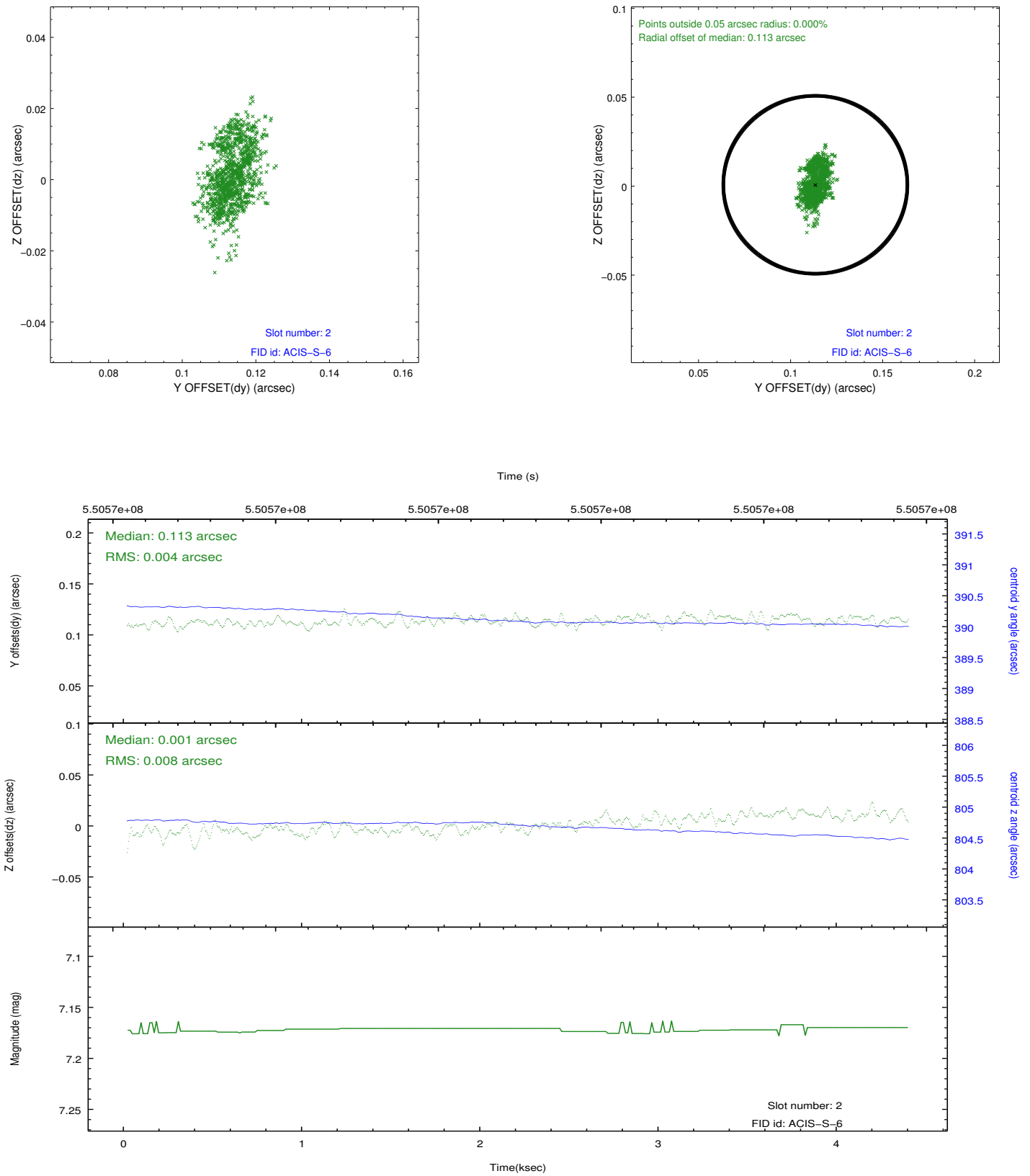
2.5.1 Slot 0



2.5.2 Slot 1



2.5.3 Slot 2



A Summary

A.1 Status

V&V Scientist	Beth Sundheim
V&V Date (YYYY-MM-DD)	2015.06.16
V&V Edition	1
V&V Disposition and Status	OK
V&V Charge Time	4.2656000329256

A.2 Comments

The guide star in slot 5 was removed from the aspect solution due to poor data quality. The aspect solution is improved by the removal of this star from the solution.