

V&V Reference Report

L2 ASCDS Version : 10.2.1

Observation 15729 - L2 Version 2
Chandra X-Ray Center

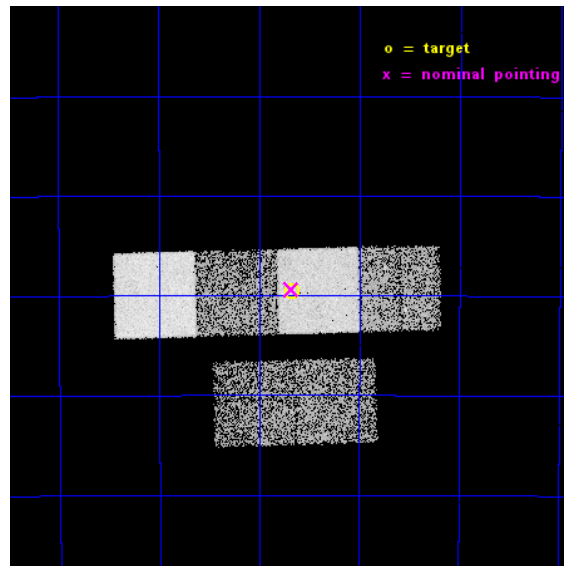
L2 Processing Date : Dec 10 2014

Contents

1	Front	2
2	OBI	3
2.1	OBI	3
2.1.1	Images	3
2.1.2	Bias	3
2.1.3	Parameters	4
2.1.4	Events	4
2.2	Compared Parameters	5
2.3	Aspect	6
2.4	Star Slots	9
2.4.1	Slot 3	9
2.4.2	Slot 4	10
2.4.3	Slot 5	11
2.4.4	Slot 6	12
2.4.5	Slot 7	13
2.5	FID Slots	14
2.5.1	Slot 0	14
2.5.2	Slot 1	15
2.5.3	Slot 2	16
A	Summary	17
A.1	Status	17
A.2	Comments	17

1 Front

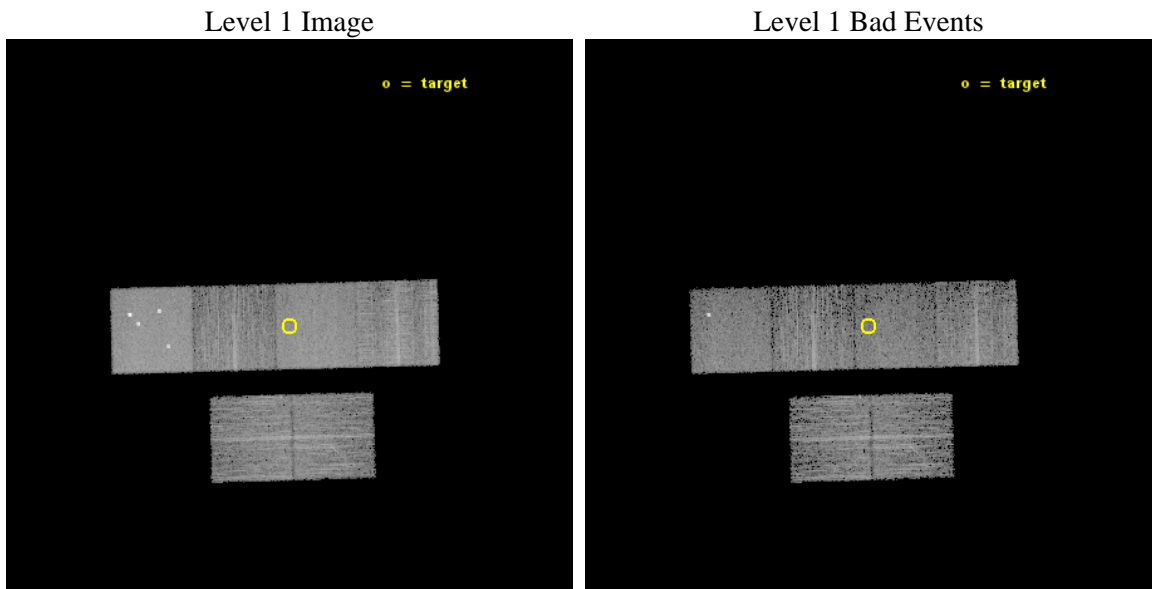
seq_num	200942	Sequence number
obs_id	15729	Observation id
title	A Snapshot Survey of the Most Active Hot Jupiter Systems.	Proposal
observer	Dr. Scott Wolk	Principal investigator
object	WASP 19	Source name
dtcycle	0	
cycle	P	events from which exps? Prim/Second/Both
ra_targ	148.417083	Observer's specified target RA [deg]
dec_targ	-45.659167	Observer's specified target Dec [deg]
ra_nom	148.41953817324	Nominal RA [deg]
dec_nom	-45.656646338962	Nominal Dec [deg]
roll_nom	358.4639103218	Nominal Roll [deg]
revision	2	Processing version of data
ontime	9967.9999629259	Sum of GTIs [s]
livetime	9841.7791453864	Livetime [s]
ontime2	9967.9999629259	Sum of GTIs [s]
ontime3	9958.2769717574	Sum of GTIs [s]
ontime5	9967.9999629259	Sum of GTIs [s]
ontime6	9967.9999629259	Sum of GTIs [s]
ontime7	9967.9999629259	Sum of GTIs [s]
ontime8	9967.9999629259	Sum of GTIs [s]
l2events	78883	Number of level 2 events



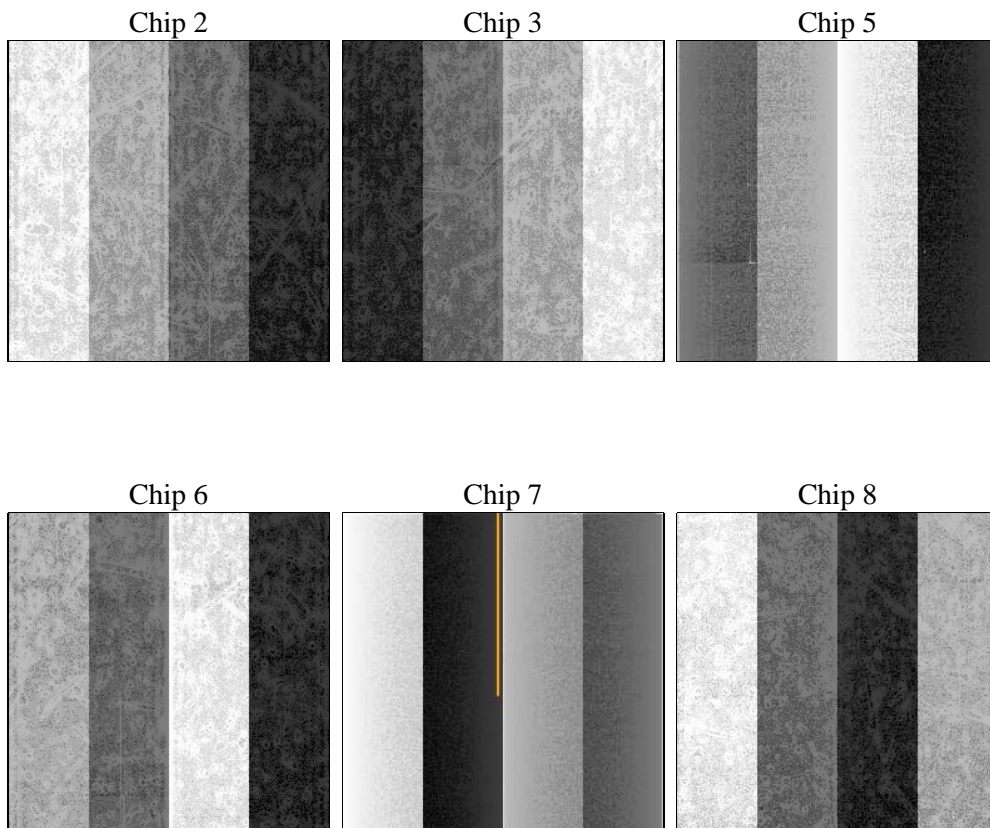
2 OBI

2.1 OBI

2.1.1 Images



2.1.2 Bias



2.1.3 Parameters

obi_num	0	Obi number	sched_exp_time	10000.000000	[s] Scheduled observation exposure time
ascdsver	10.3.1	Processing system revision	ontime	9967.9999629259	Sum of GTIs [s]
caldsver	4.6.4	 	ontime2	9967.9999629259	Sum of GTIs [s]
date	2014-12-10T09:29:49	Date and time of file creation	ontime3	9958.2769717574	Sum of GTIs [s]
revision	2	Processing version of data	ontime5	9967.9999629259	Sum of GTIs [s]
			ontime6	9967.9999629259	Sum of GTIs [s]
			ontime7	9967.9999629259	Sum of GTIs [s]
			ontime8	9967.9999629259	Sum of GTIs [s]
			l1events	332643	Number of level 1 events

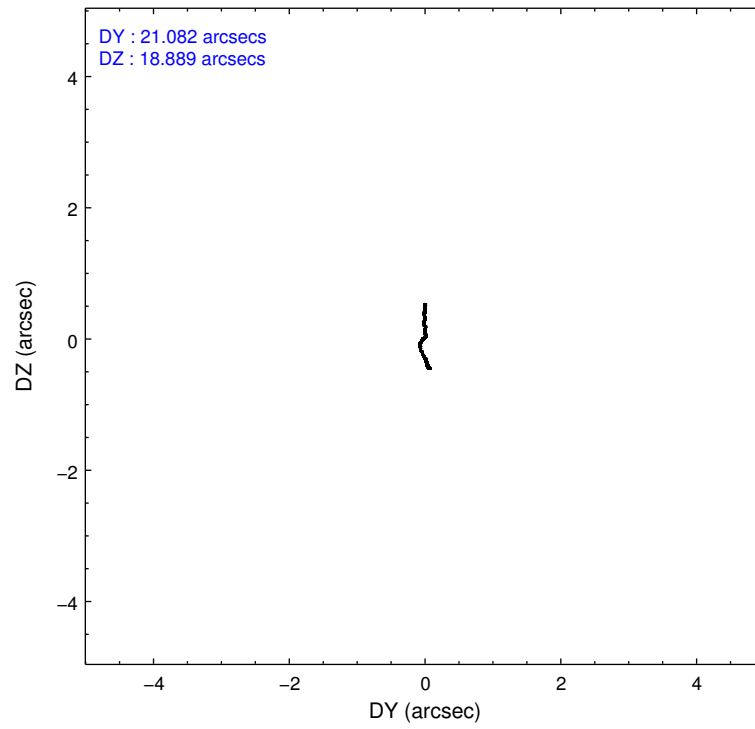
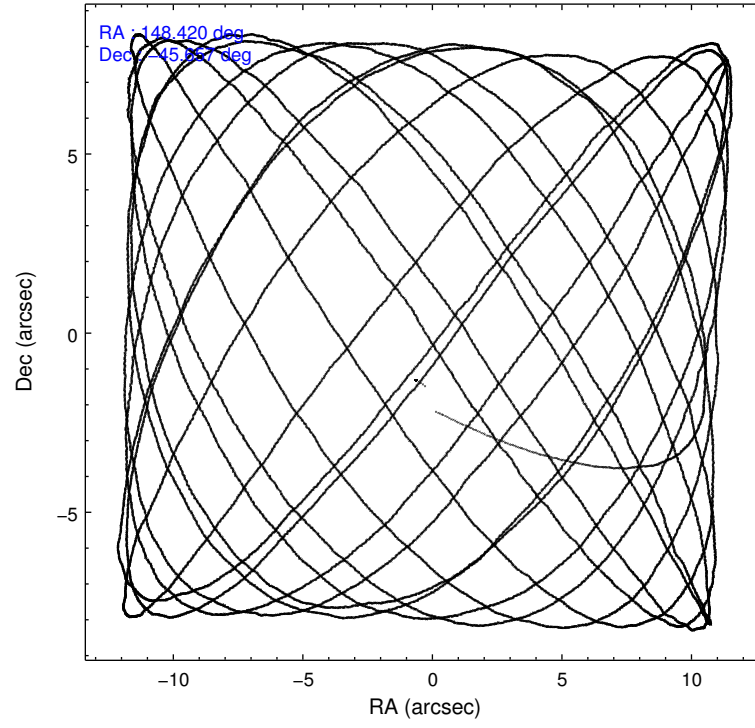
2.1.4 Events

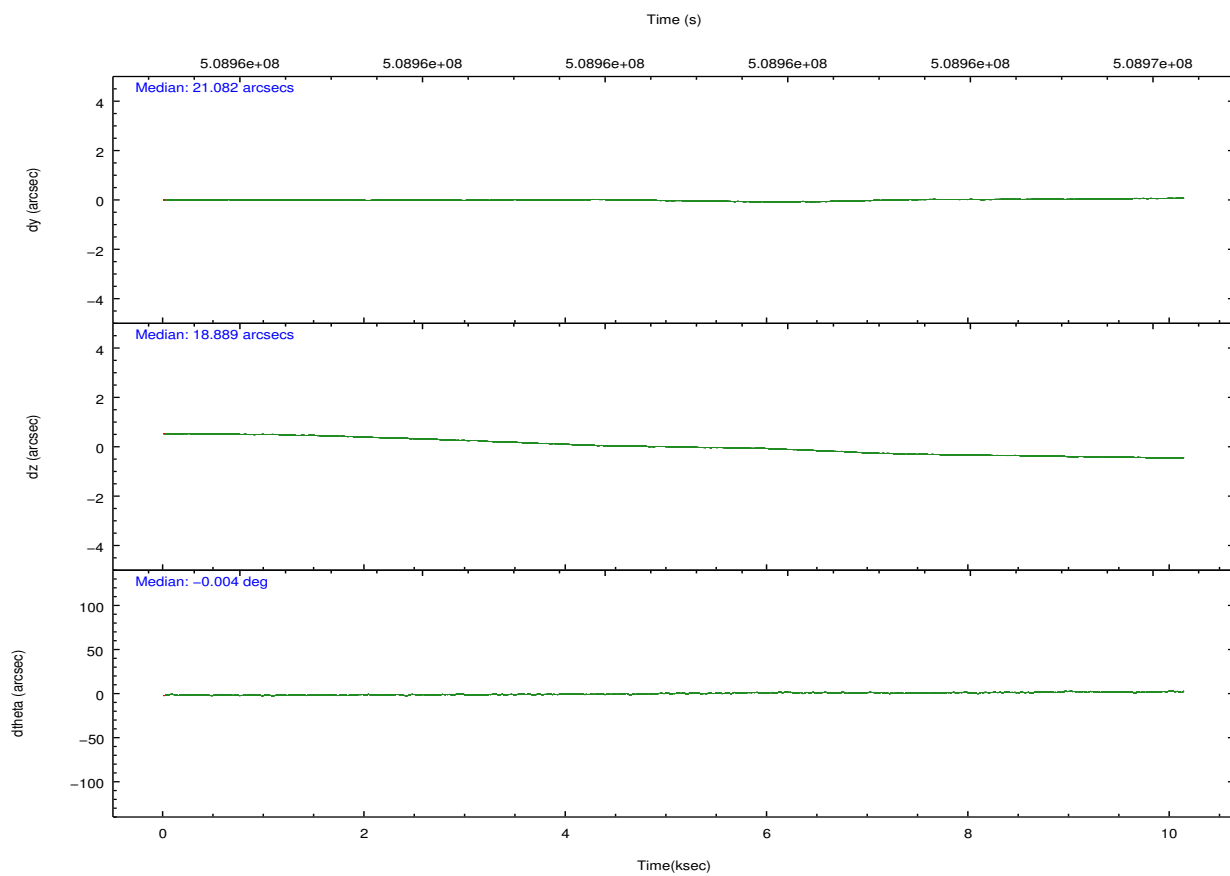
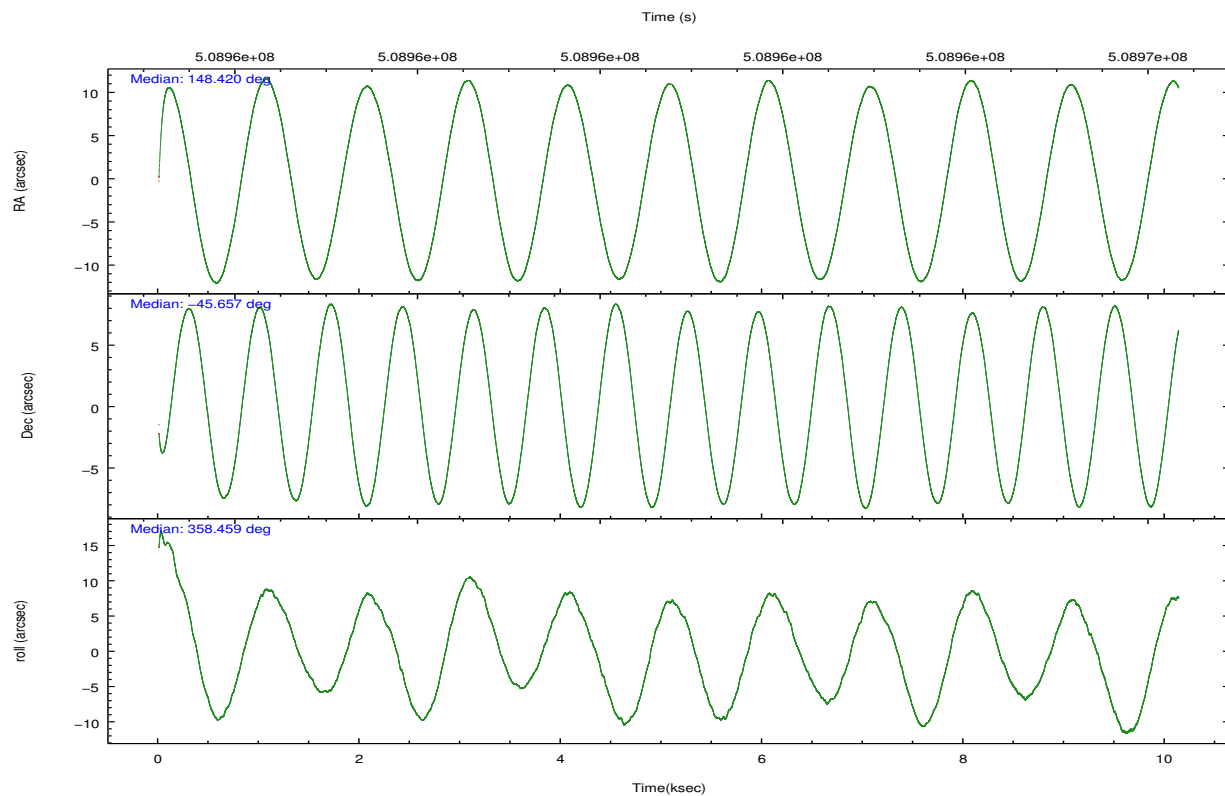
	ccd 2	ccd 3	ccd 5	ccd 6	ccd 7	ccd 8		ccd 2	ccd 3	ccd 5	ccd 6	ccd 7	ccd 8
level 1 events	45230	43550	80700	44639	60858	57666	grade 0 events	1850	1723	7053	1998	2428	4773
rejected events	40113	38655	39808	39117	34197	41410		4%	3%	8%	4%	3%	8%
rejected %	88%	88%	49%	87%	56%	71%	grade 1 events	24	26	128	29	68	53
								0%	0%	0%	0%	0%	0%
							grade 2 events	1179	1077	11938	1208	5447	3859
								2%	2%	14%	2%	8%	6%
							grade 3 events	518	526	1256	521	2310	1643
								1%	1%	1%	1%	3%	2%
							grade 4 events	529	529	1210	565	2311	1613
								1%	1%	1%	1%	3%	2%
							grade 5 events	1918	2324	5903	2429	6336	3368
								4%	5%	7%	5%	10%	5%
							grade 6 events	1041	1041	19450	1230	14174	4372
								2%	2%	24%	2%	23%	7%
							grade 7 events	38171	36304	33762	36659	27784	37985
								84%	83%	41%	82%	45%	65%

2.2 Compared Parameters

Parameter	Planned	Actual	Parameter	Planned	Actual
Instrument	ACIS	ACIS	Obspar format version number	7	7
Detector	ACIS-235678	ACIS-235678	Obspar file type	PREDICTED	ACTUAL
Grating	NONE	NONE	Obspar update status	NONE	UPDATED
Data mode	VFAINT	VFAINT	CCD I0 on	N	N
Observation mode	POINTING	POINTING	CCD I1 on	N	N
[deg] Pointing RA	148.385366	148.4195381732426	CCD I2 on	O2	Y
[deg] Pointing Dec	-45.670019	-45.65664633896203	CCD I3 on	O3	Y
[deg] Pointing Roll	358.282832	358.4639103218039	CCD S0 on	N	N
[mm] SIM focus pos	-0.684267	-0.6828225247311905	CCD S1 on	Y	Y
[mm] SIM defocus	0	0.001444936568705701	CCD S2 on	Y	Y
[mm] SIM translation stage pos	-190.132523	-190.1400660498719	CCD S3 on	Y	Y
[mm] SIM translation stage offset	0	0.00754346686406393	CCD S4 on	O1	Y
[s] Observation start time (MET)	508955825.184000	508954640.95329	CCD S5 on	N	N
Observation start date	2014-02-16T16:35:58	2014-02-16T16:17:20	Number of optional ACIS chips dropped	0	0
[s] Observation end time (MET)	508965825.184000	508966316.21643	On-chip summing requested	N	N
Observation end date	2014-02-16T19:22:38	2014-02-16T19:31:56	Subarray requested	NONE	NONE
Read mode	TIMED	TIMED	Alternating exposures requested	N	N
			[s] Primary exposure time	0.000000	3.2

2.3 Aspect



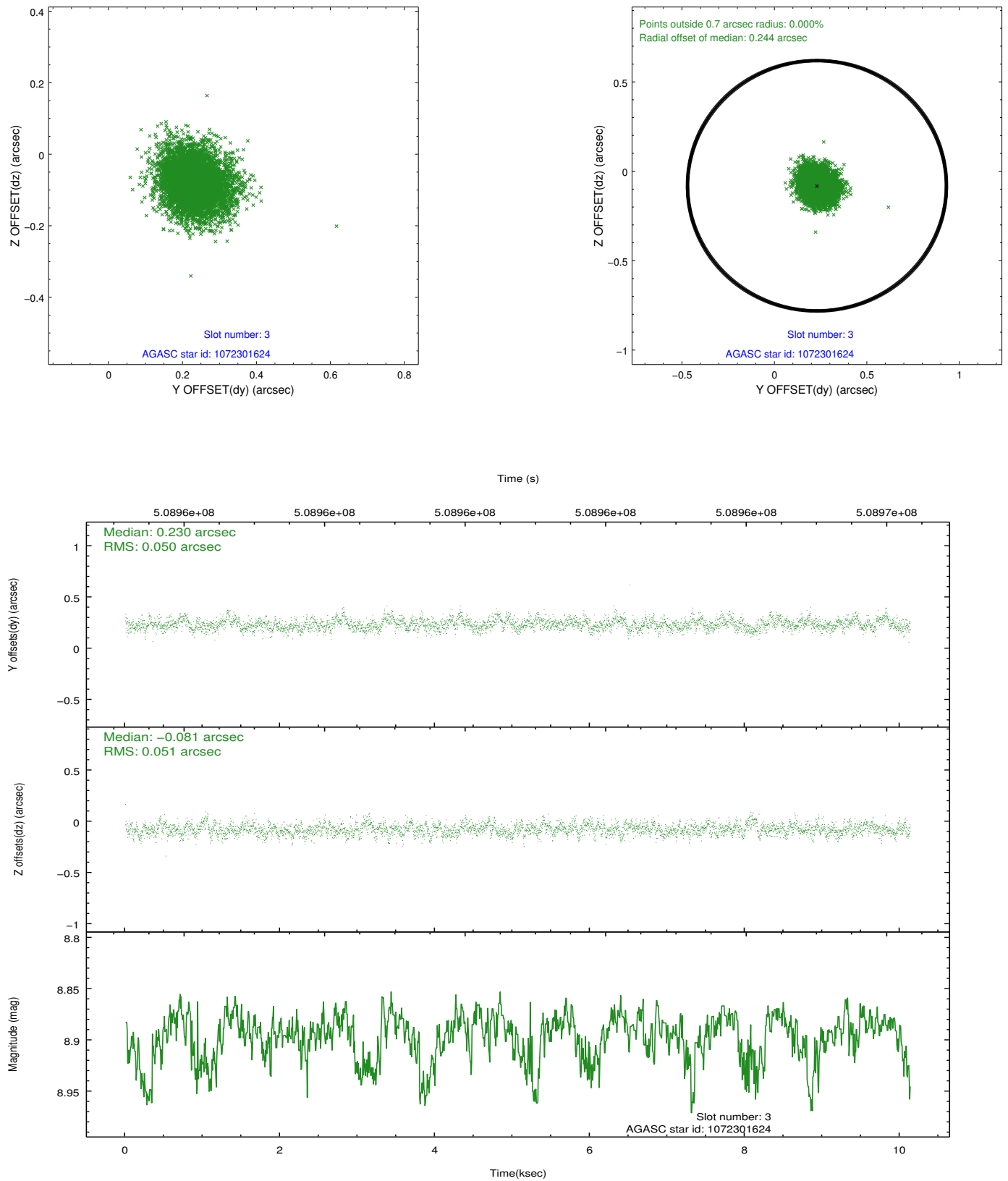


Slot Statistics

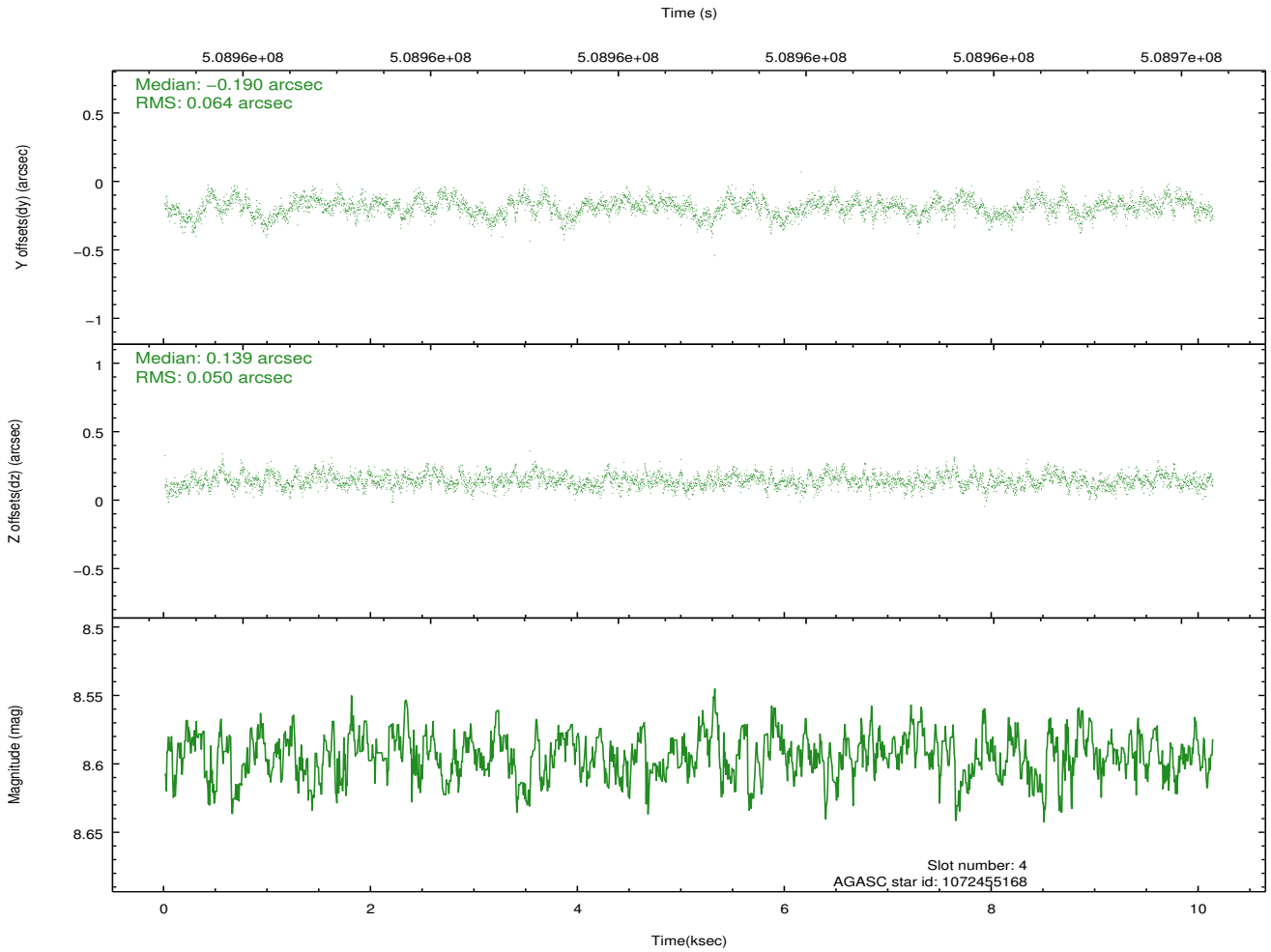
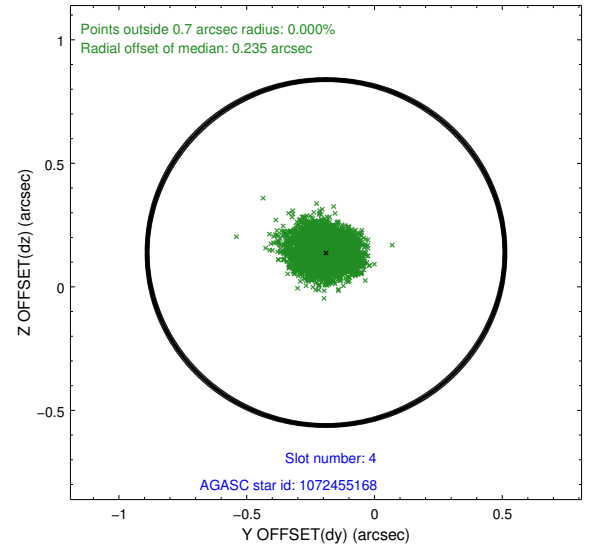
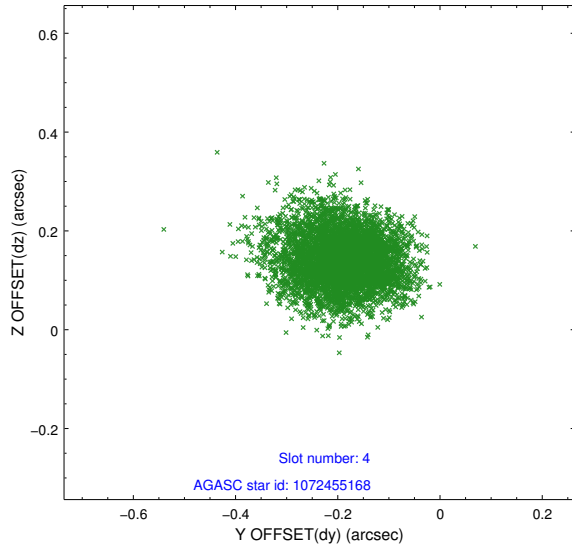
slot	status	used	id	mag	n_pts	med_dy	med_dz	dr1	dr2	ra	dec	mean_y	mean_z
0	FID		ACIS-S-2	6.86	2472	-0.115	-0.019	0.013	0.020	0.000000	0.000000	-774.34	-1740.40
1	FID		ACIS-S-4	6.95	2472	0.216	0.061	0.009	0.016	0.000000	0.000000	2139.04	167.60
2	FID		ACIS-S-5	6.97	2471	-0.133	-0.033	0.012	0.019	0.000000	0.000000	-1826.52	161.79
3	GUIDE	used	1072301624	8.89	4941	0.230	-0.081	0.076	0.124	148.188683	-45.402411	-525.49	947.47
4	GUIDE	used	1072455168	8.59	4939	-0.190	0.139	0.086	0.142	149.231800	-46.103735	2158.93	-1507.95
5	GUIDE	used	1072300064	9.04	4942	0.361	0.563	0.106	0.169	147.715437	-46.318426	-1593.72	-2389.90
6	GUIDE	used	1072313240	8.00	4943	-0.085	-0.223	0.080	0.128	147.945335	-45.158104	-1172.14	1804.89
7	GUIDE	used	1072452808	7.57	4942	-0.317	-0.405	0.072	0.113	149.077506	-45.256343	1708.04	1534.06

2.4 Star Slots

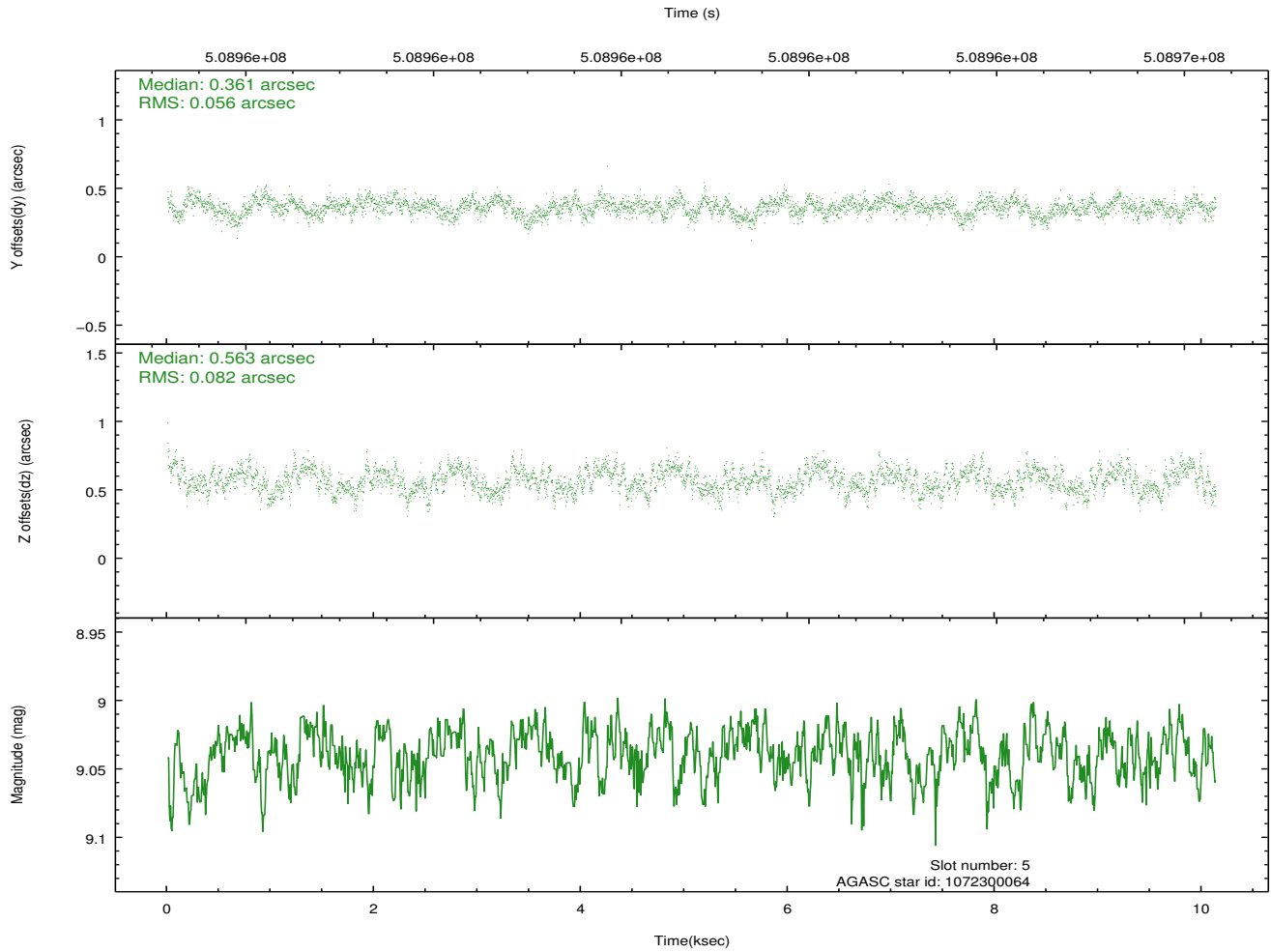
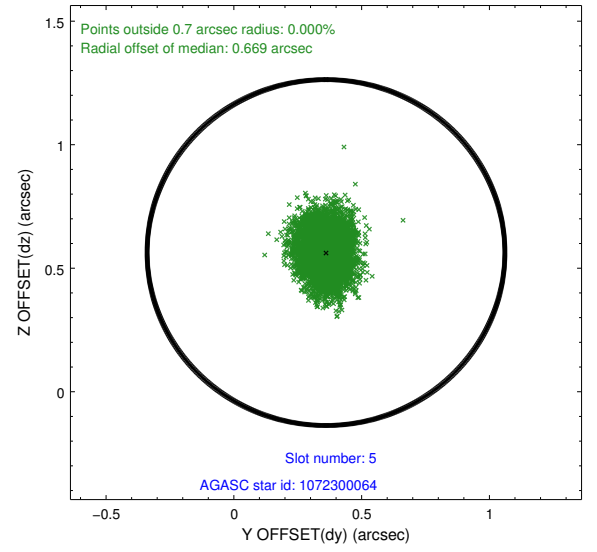
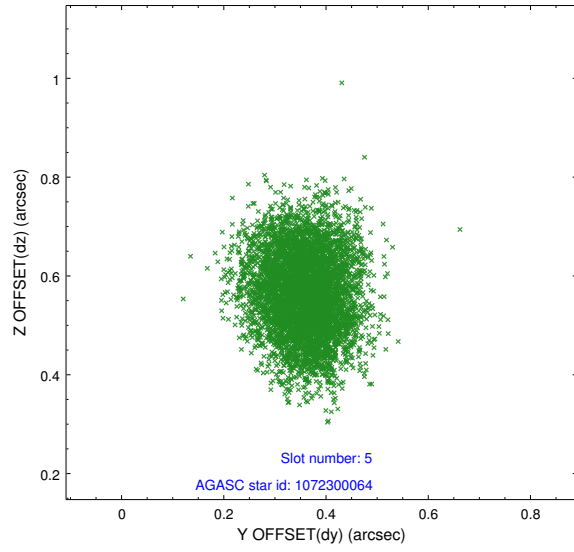
2.4.1 Slot 3



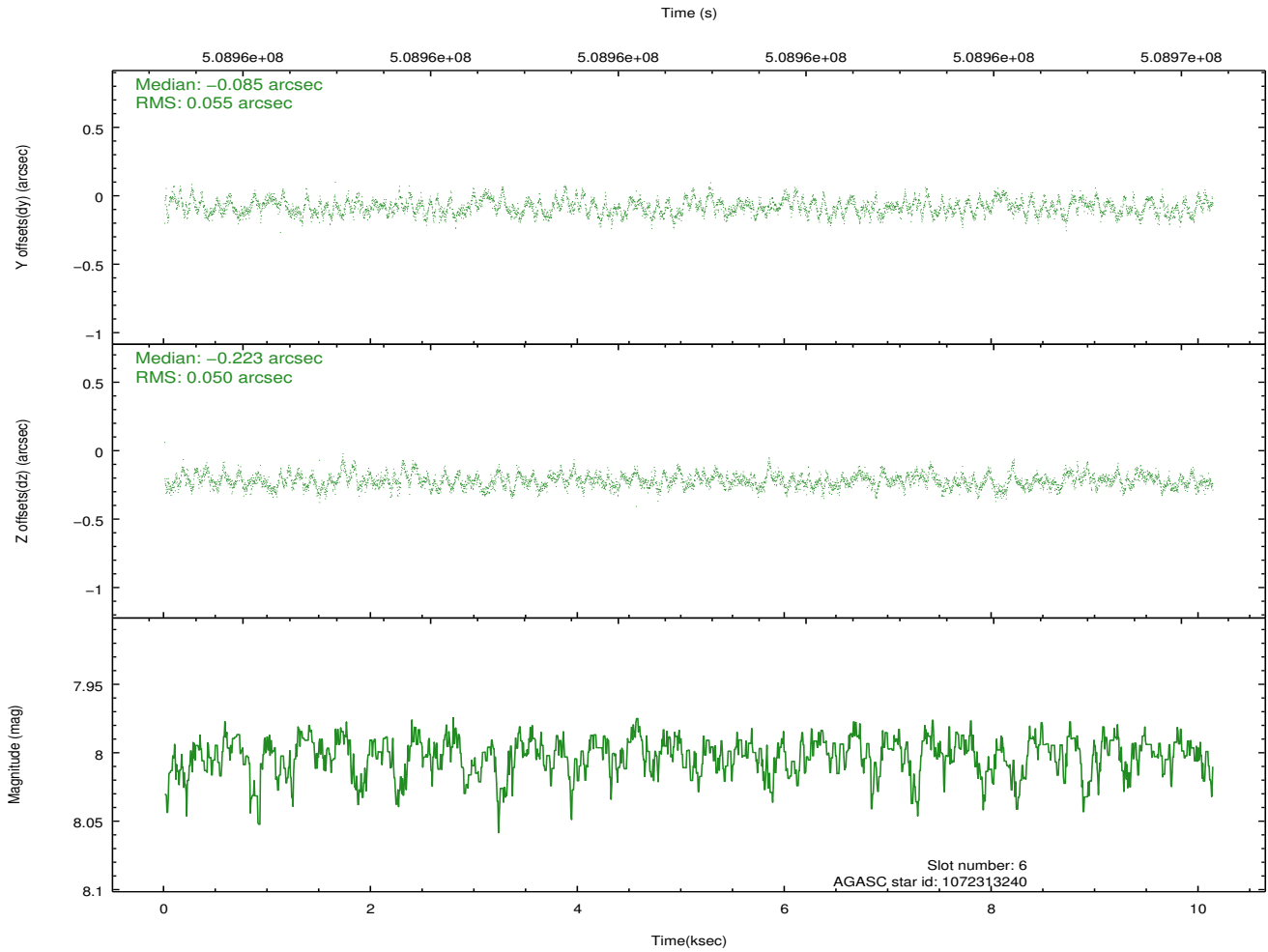
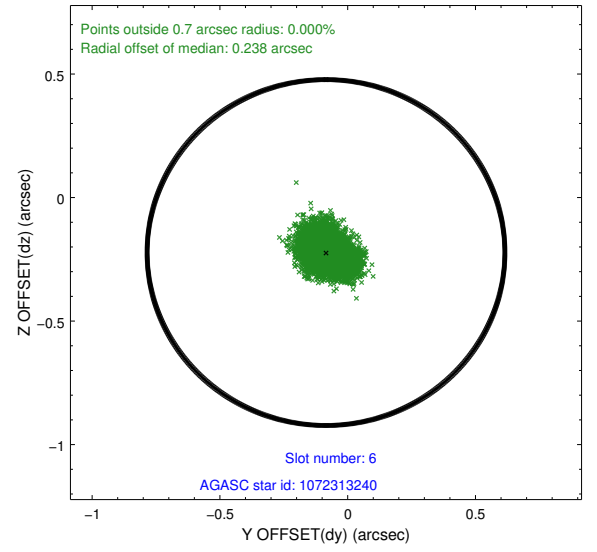
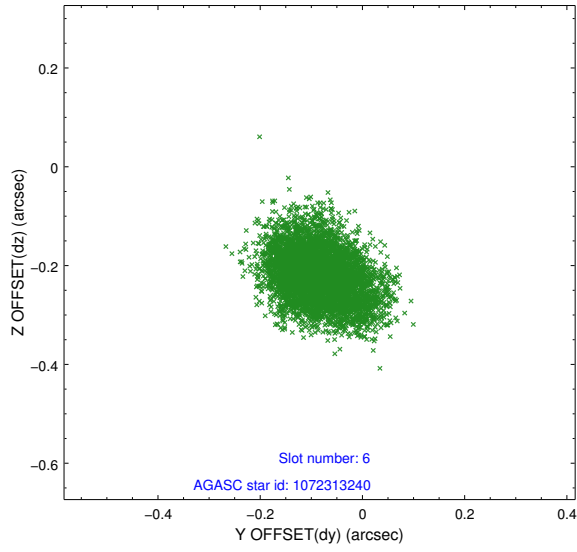
2.4.2 Slot 4



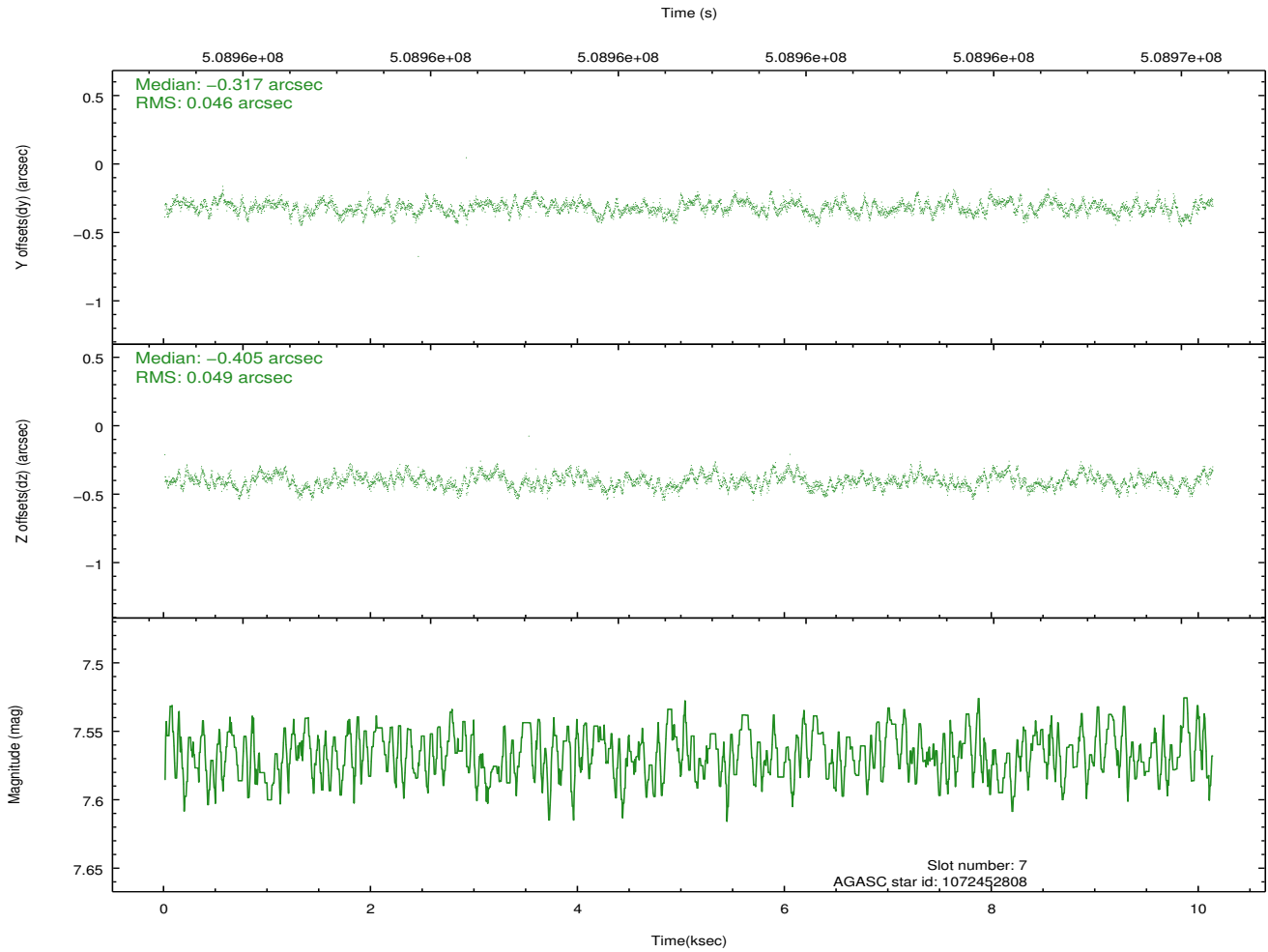
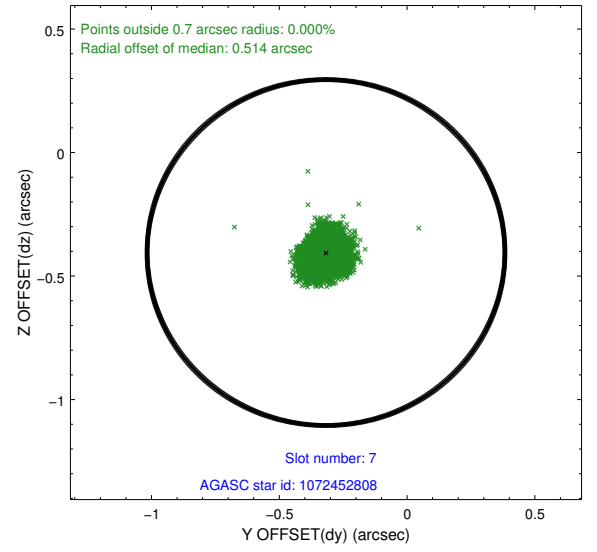
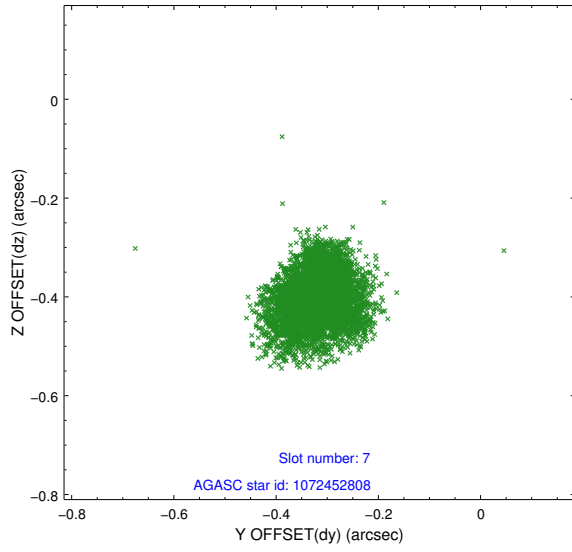
2.4.3 Slot 5



2.4.4 Slot 6

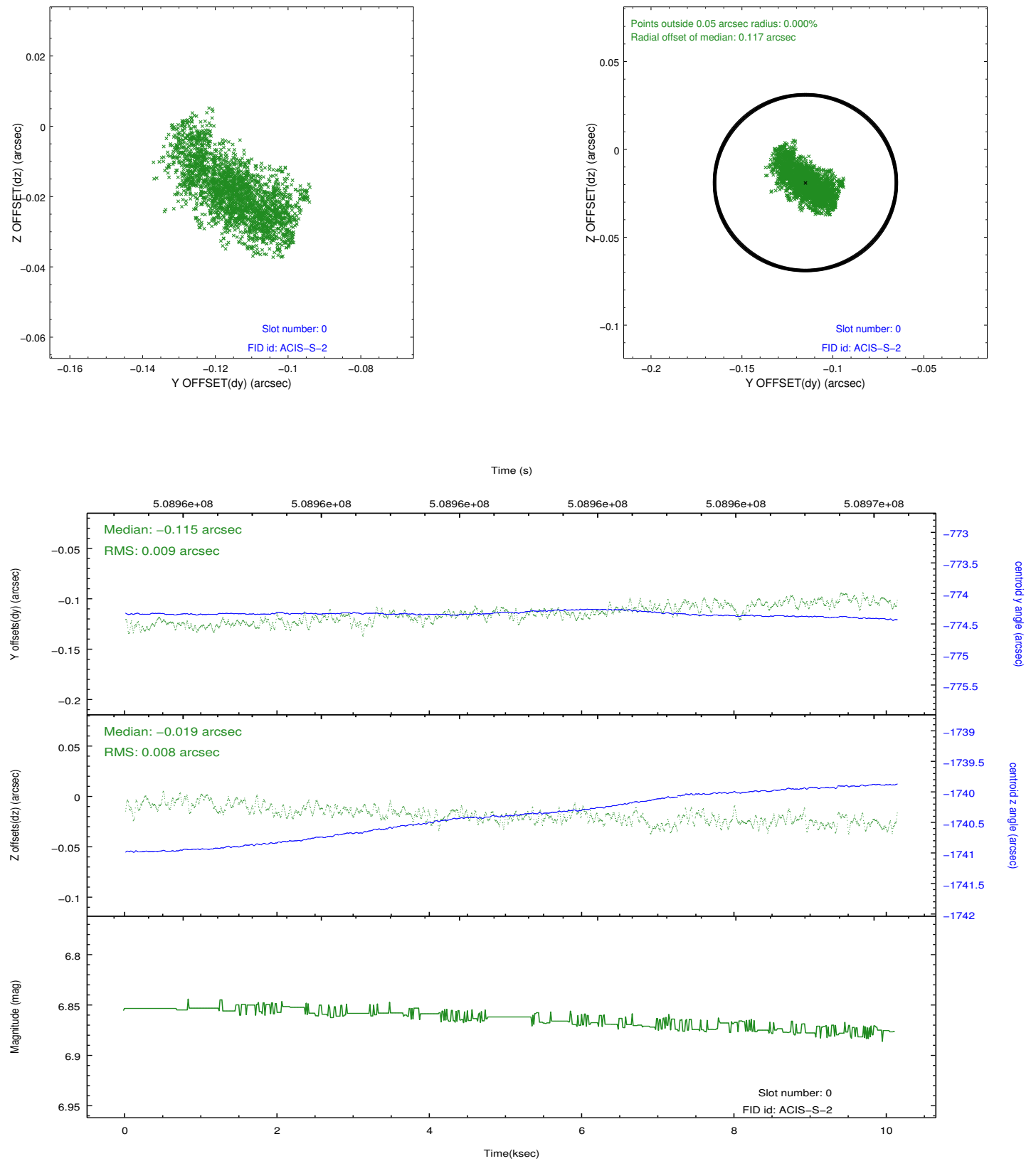


2.4.5 Slot 7

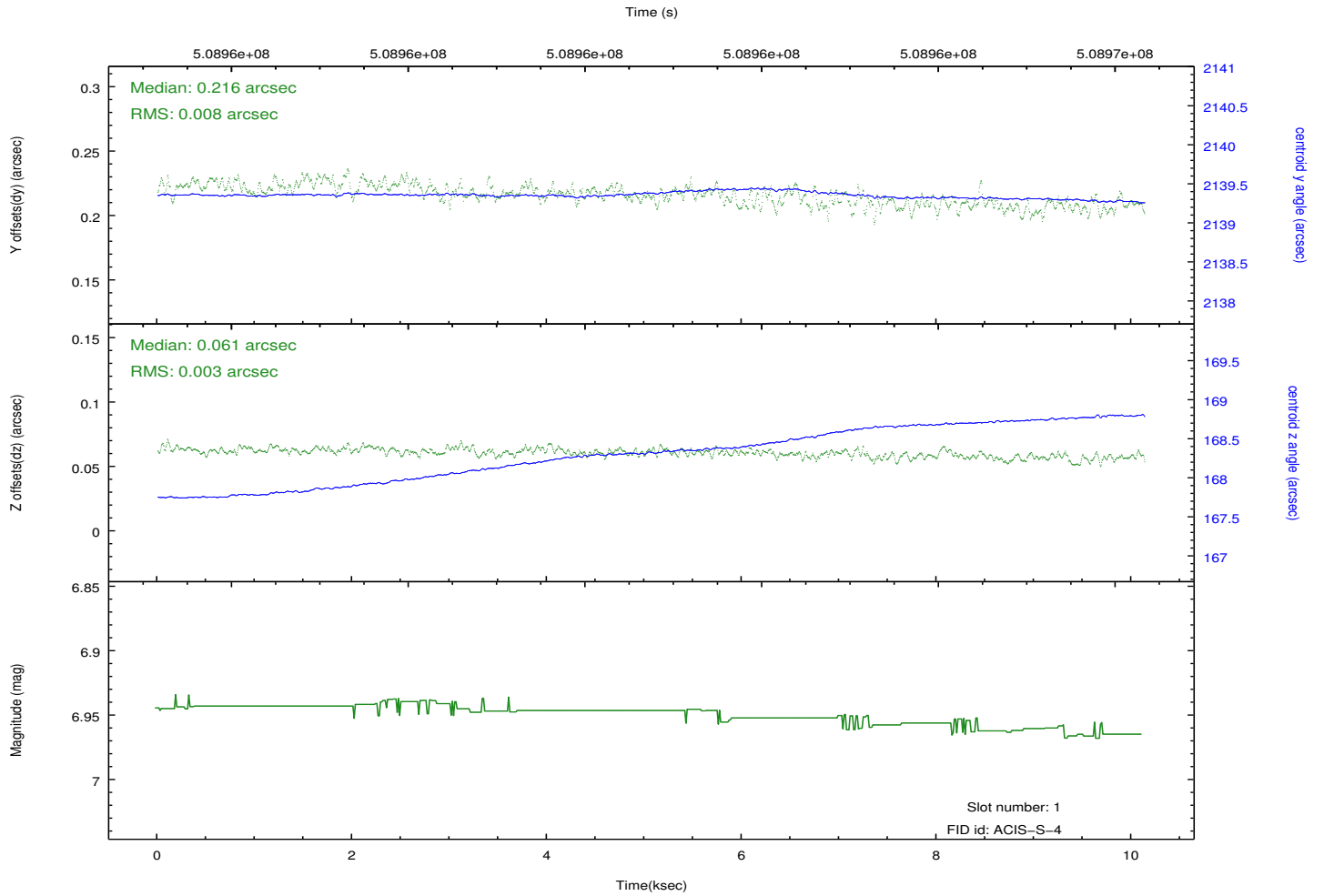
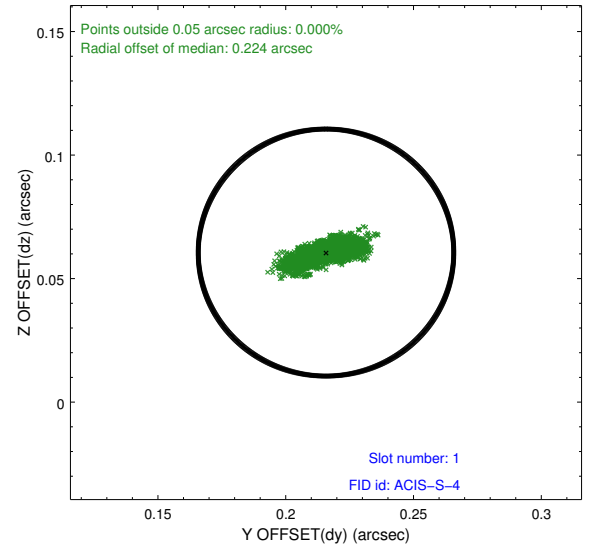
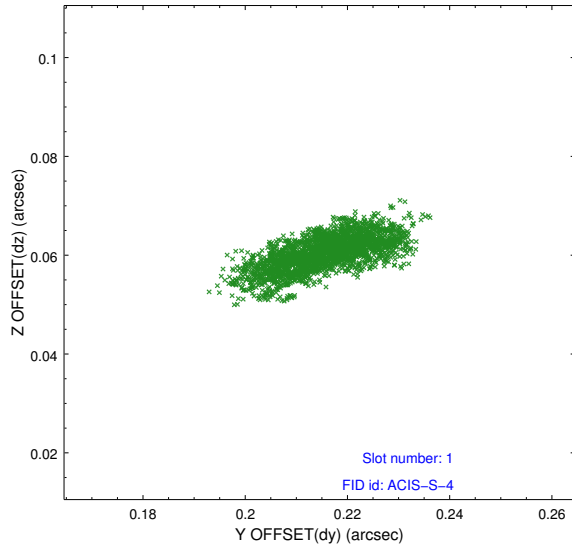


2.5 FID Slots

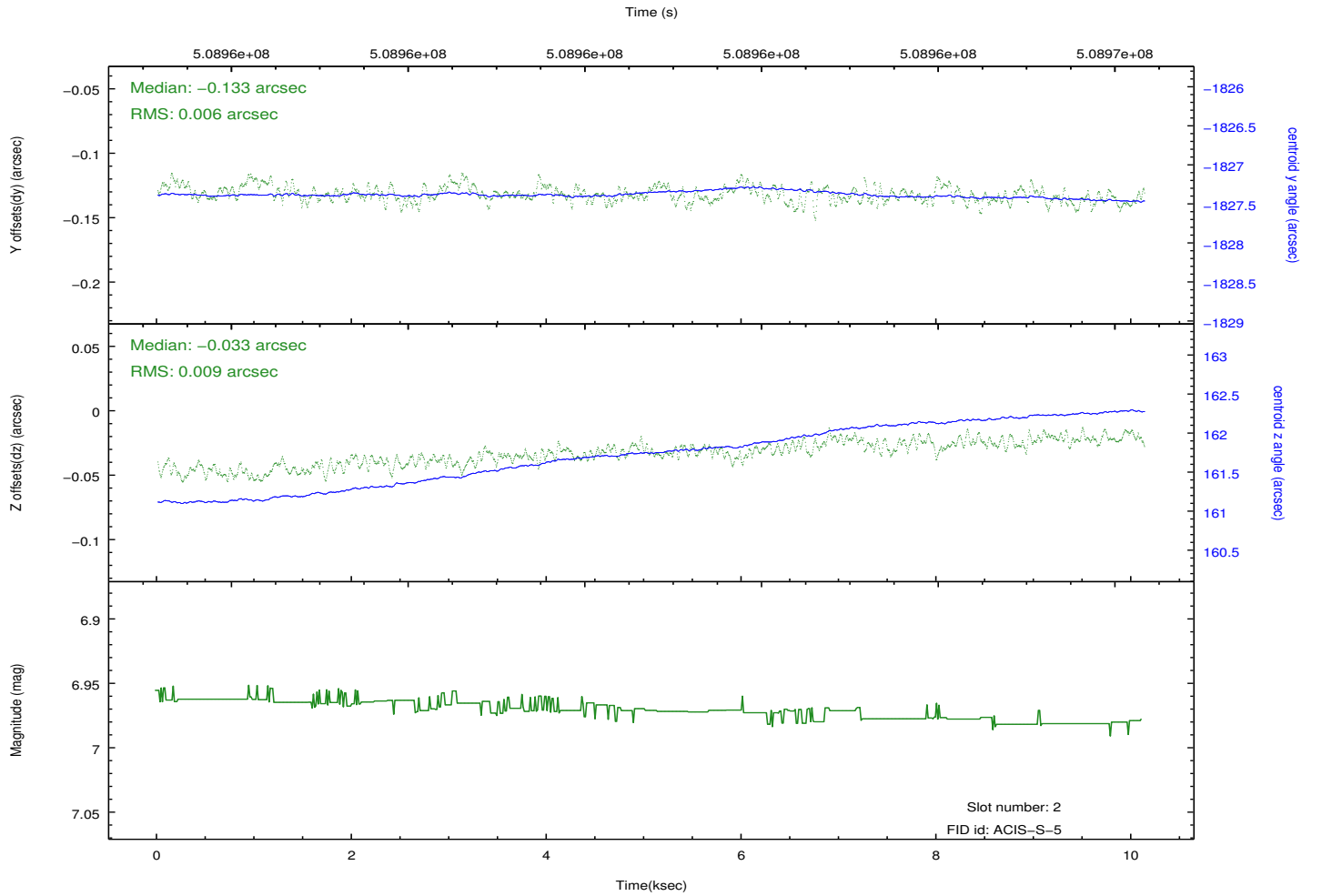
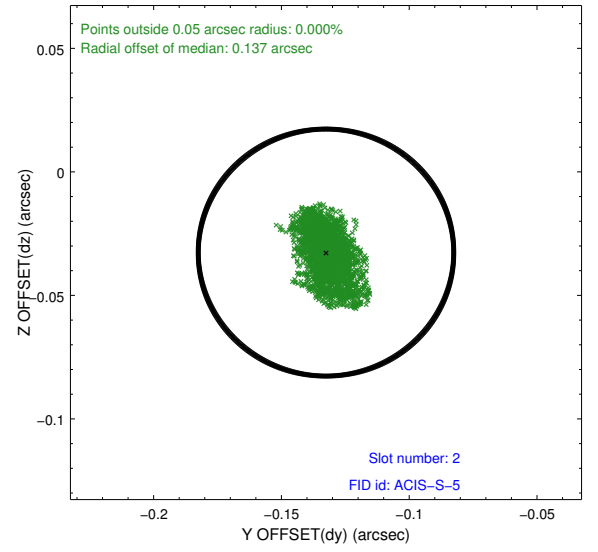
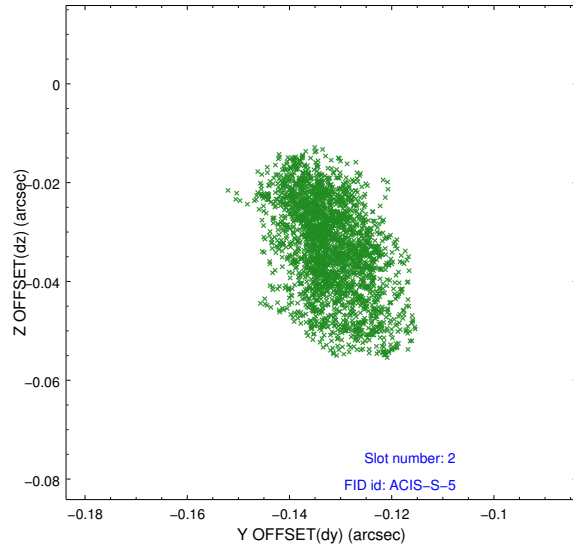
2.5.1 Slot 0



2.5.2 Slot 1



2.5.3 Slot 2



A Summary

A.1 Status

V&V Scientist	Jen Lauer
V&V Date (YYYY-MM-DD)	2014.12.17
V&V Edition	1
V&V Disposition and Status	OK
V&V Charge Time	9.9679999629259

A.2 Comments

These data have been reprocessed with new aspect alignment calibration files that correct small mean offsets (up to 0.4 arcsecs) and improve overall astrometric accuracy. The new calibration was determined using data from the time period being reprocessed and was performed using cross-correlation of X-ray sources with radio and optical counterparts.