

V&V Reference Report

L2 ASCDS Version : 8.5.1.1

Observation 15649 - L2 Version 2
Chandra X-Ray Center

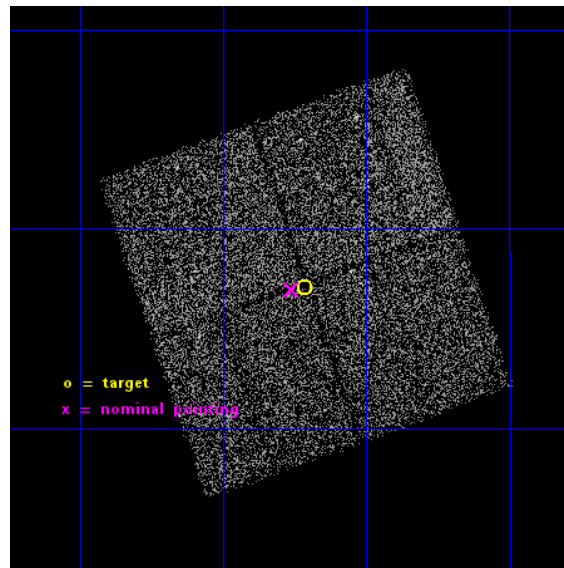
L2 Processing Date : Dec 3 2014

Contents

1	Front	2
2	OBI	3
2.1	OBI	3
2.1.1	Images	3
2.1.2	Bias	3
2.1.3	Parameters	4
2.1.4	Events	4
2.2	Compared Parameters	5
2.3	Aspect	6
2.4	Star Slots	9
2.4.1	Slot 3	9
2.4.2	Slot 4	10
2.4.3	Slot 5	11
2.4.4	Slot 6	12
2.4.5	Slot 7	13
2.5	FID Slots	14
2.5.1	Slot 0	14
2.5.2	Slot 1	15
2.5.3	Slot 2	16
A	Summary	17
A.1	Status	17
A.2	Comments	17

1 Front

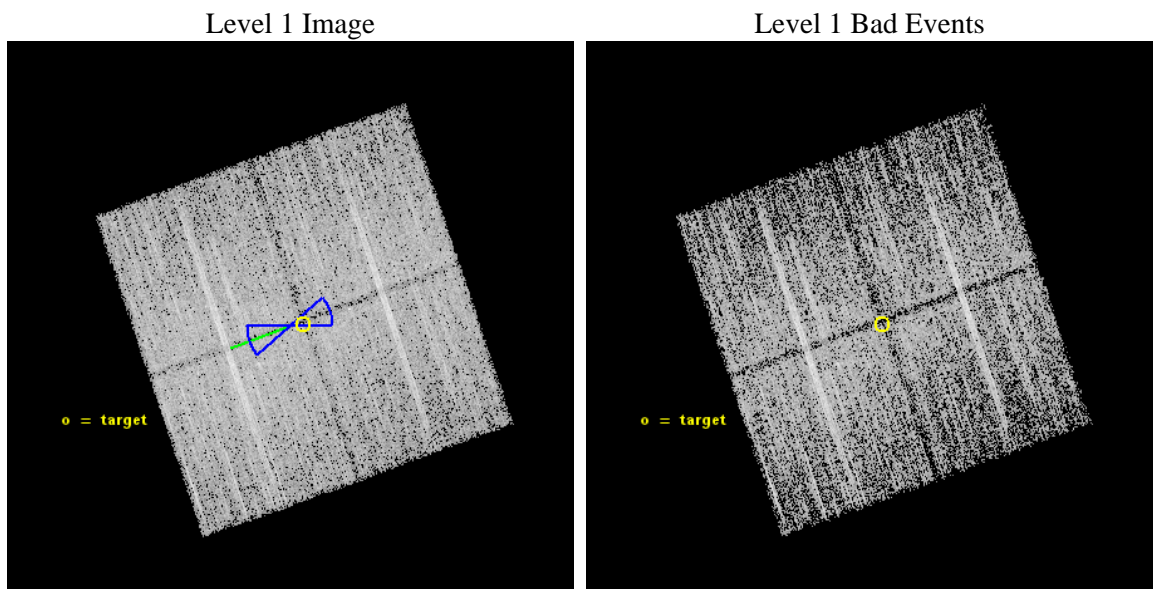
seq_num	901062	Sequence number
obs_id	15649	Observation id
title	The COSMOS Legacy Survey	Proposal title
observer	Dr Francesca Civano	Principal investigator
object	COSMOS Legacy	Source name
dtcycle	0	
cycle	P	events from which exps? Prim/Second/Both
ra_targ	150.6787	Observer's specified target RA [deg]
dec_targ	2.451014	Observer's specified target Dec [deg]
ra_nom	150.6904090877	Nominal RA [deg]
dec_nom	2.4493158601222	Nominal Dec [deg]
roll_nom	250.6582042772	Nominal Roll [deg]
revision	2	Processing version of data
ontime	15453.500118852	Sum of GTIs [s]
livetime	15251.588763098	Livetime [s]
ontime0	15453.500118852	Sum of GTIs [s]
ontime1	15453.500118852	Sum of GTIs [s]
ontime2	15450.359178364	Sum of GTIs [s]
ontime3	15453.500118852	Sum of GTIs [s]
l2events	29573	Number of level 2 events



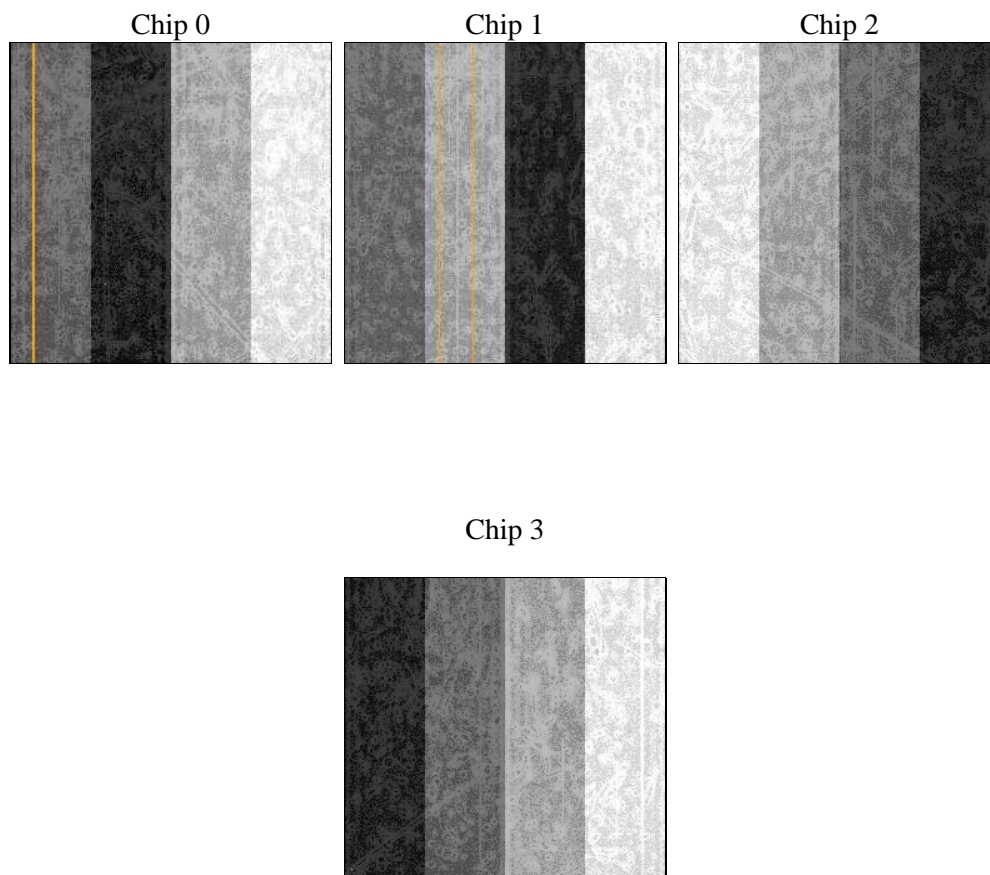
2 OBI

2.1 OBI

2.1.1 Images



2.1.2 Bias



2.1.3 Parameters

obi_num	0	Obi number	sched_exp_time	15363.726000	[s] Scheduled observation exposure time
ascdsver	10.3	Processing system revision	ontime	15453.500118852	Sum of GTIs [s]
caldsver	4.6.4	 	ontime0	15453.500118852	Sum of GTIs [s]
date	2014-12-03T11:47:23	Date and time of file creation	ontime1	15453.500118852	Sum of GTIs [s]
revision	2	Processing version of data	ontime2	15450.359178364	Sum of GTIs [s]
			ontime3	15453.500118852	Sum of GTIs [s]
			l1events	276933	Number of level 1 events

2.1.4 Events

	ccd 0	ccd 1	ccd 2	ccd 3
level 1 events	64238	67221	74521	70953
rejected events	55694	57347	66320	62448
rejected %	86%	85%	88%	88%

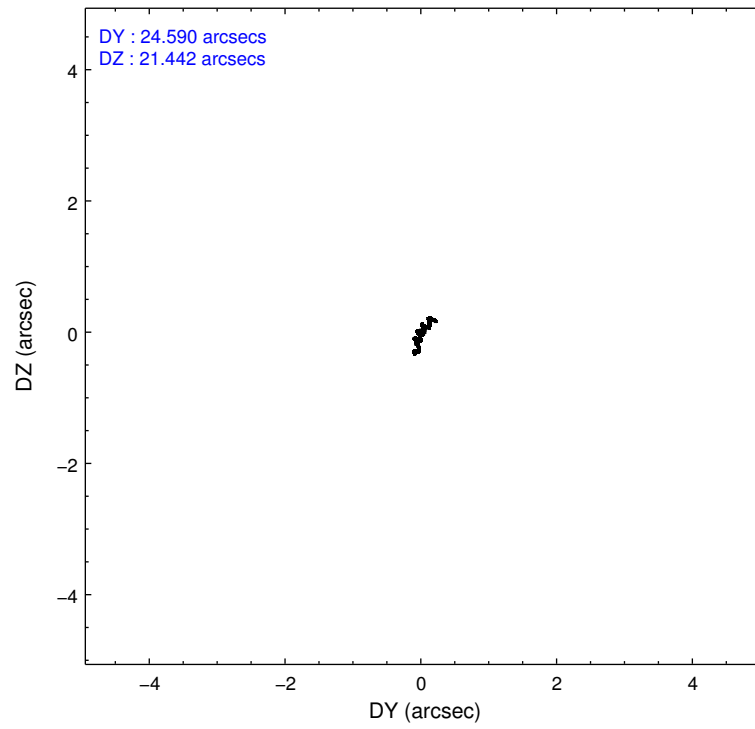
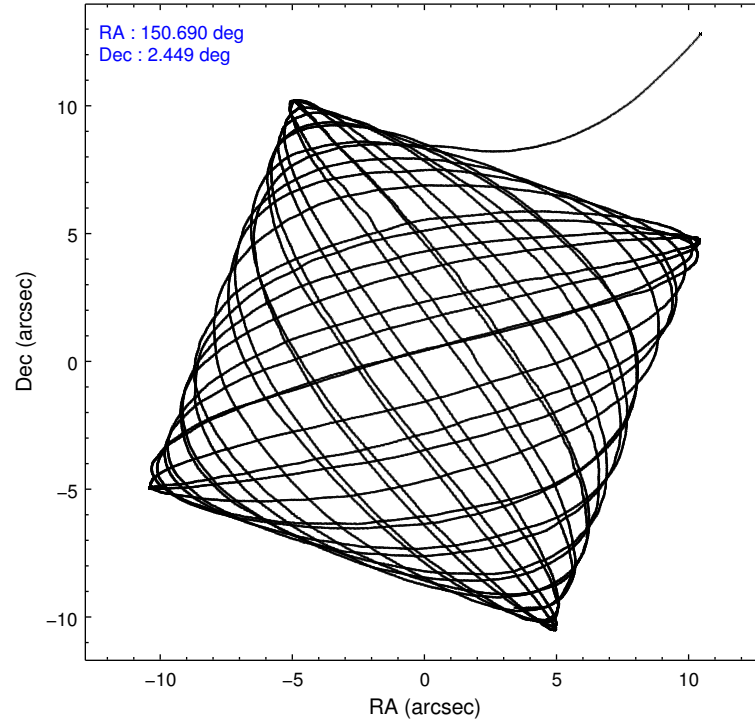
	ccd 0	ccd 1	ccd 2	ccd 3
grade 0 events	2956	3563	2938	3173
	4%	5%	3%	4%
grade 1 events	57	30	42	44
	0%	0%	0%	0%
grade 2 events	2237	2379	2011	1843
	3%	3%	2%	2%
grade 3 events	843	948	817	881
	1%	1%	1%	1%
grade 4 events	812	923	844	877
	1%	1%	1%	1%
grade 5 events	3443	3590	3211	3887
	5%	5%	4%	5%
grade 6 events	1699	2067	1595	1734
	2%	3%	2%	2%
grade 7 events	52191	53721	63063	58514
	81%	79%	84%	82%

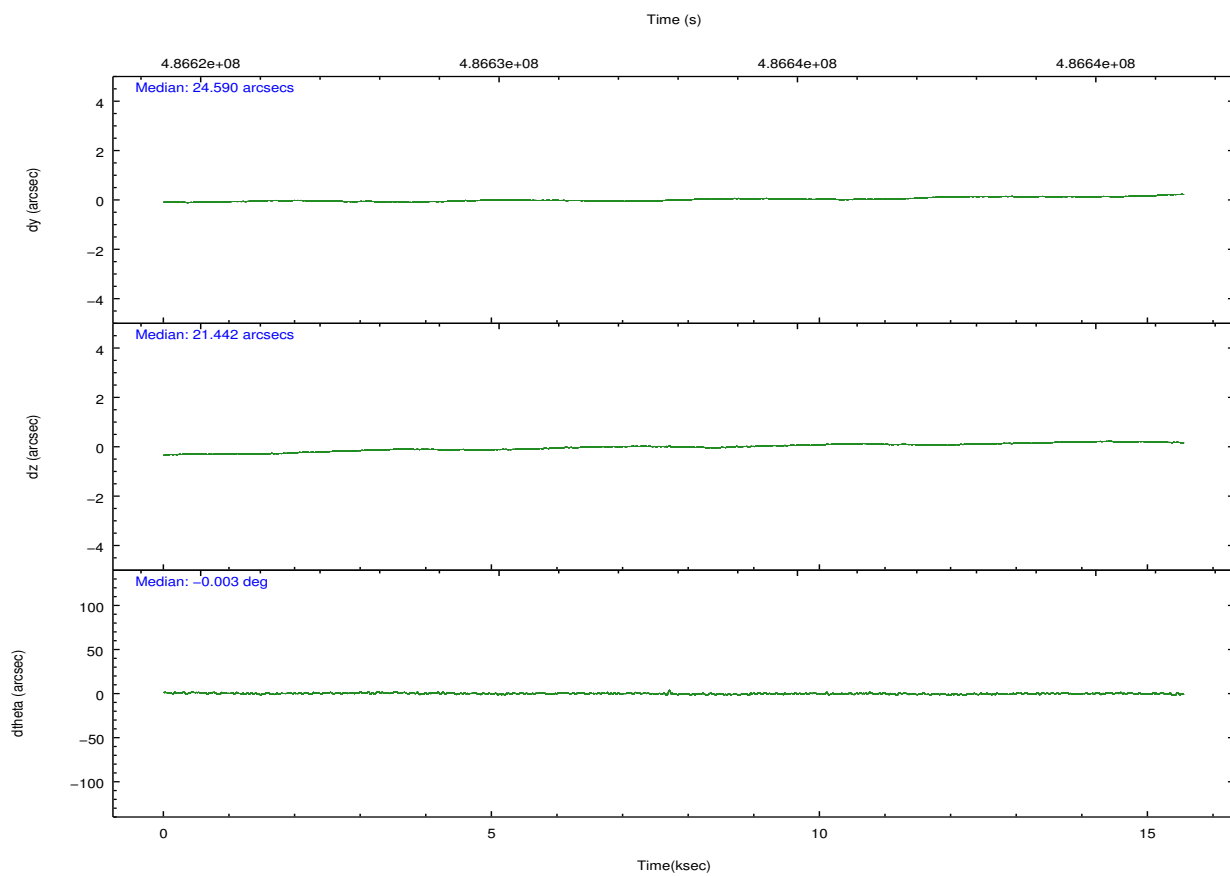
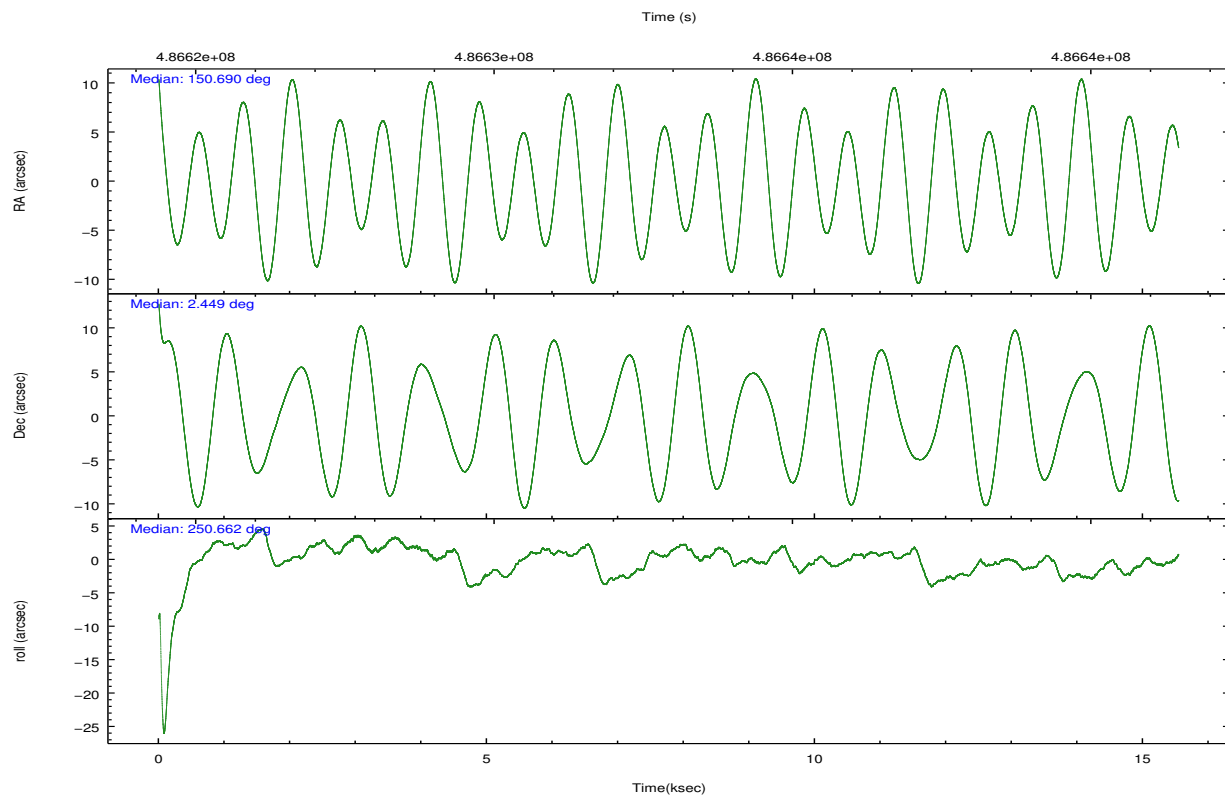
2.2 Compared Parameters

Parameter	Planned	Actual
Instrument	ACIS	ACIS
Detector	ACIS-0123	ACIS-0123
Grating	NONE	NONE
Data mode	VFAINT	VFAINT
Observation mode	POINTING	POINTING
[deg] Pointing RA	150.685206	150.690409087696
[deg] Pointing Dec	2.476301	2.449315860122242
[deg] Pointing Roll	250.449725	250.6582042772043
[deg] Roll angle	250.000000	250.000000
[deg] Roll tolerance	20.000000	20.000000
Roll constraint allows 180D rotation	Y	Y
[mm] SIM focus pos	-0.782348	-0.7809083437167272
[mm] SIM defocus	0	0.001439871863259334
[mm] SIM translation stage pos	-233.592463	-233.5874344608287
[mm] SIM translation stage offset	0	-0.005018542100998502
[s] Observation start time (MET)	486625341.184000	486624435.09482
Observation start date	2013-06-03T05:41:14	2013-06-03T05:27:15
[s] Observation end time (MET)	486640705.184000	486640941.69572
Observation end date	2013-06-03T09:57:18	2013-06-03T10:02:21
Read mode	TIMED	TIMED

Parameter	Planned	Actual
Obspar format version number	7	7
Obspar file type	PREDICTED	ACTUAL
Obspar update status	NONE	UPDATED
Number of optional ACIS chips dropped	0	0
On-chip summing requested	N	N
Subarray requested	NONE	NONE
Alternating exposures requested	N	N
[s] Primary exposure time	0.000000	3.1

2.3 Aspect



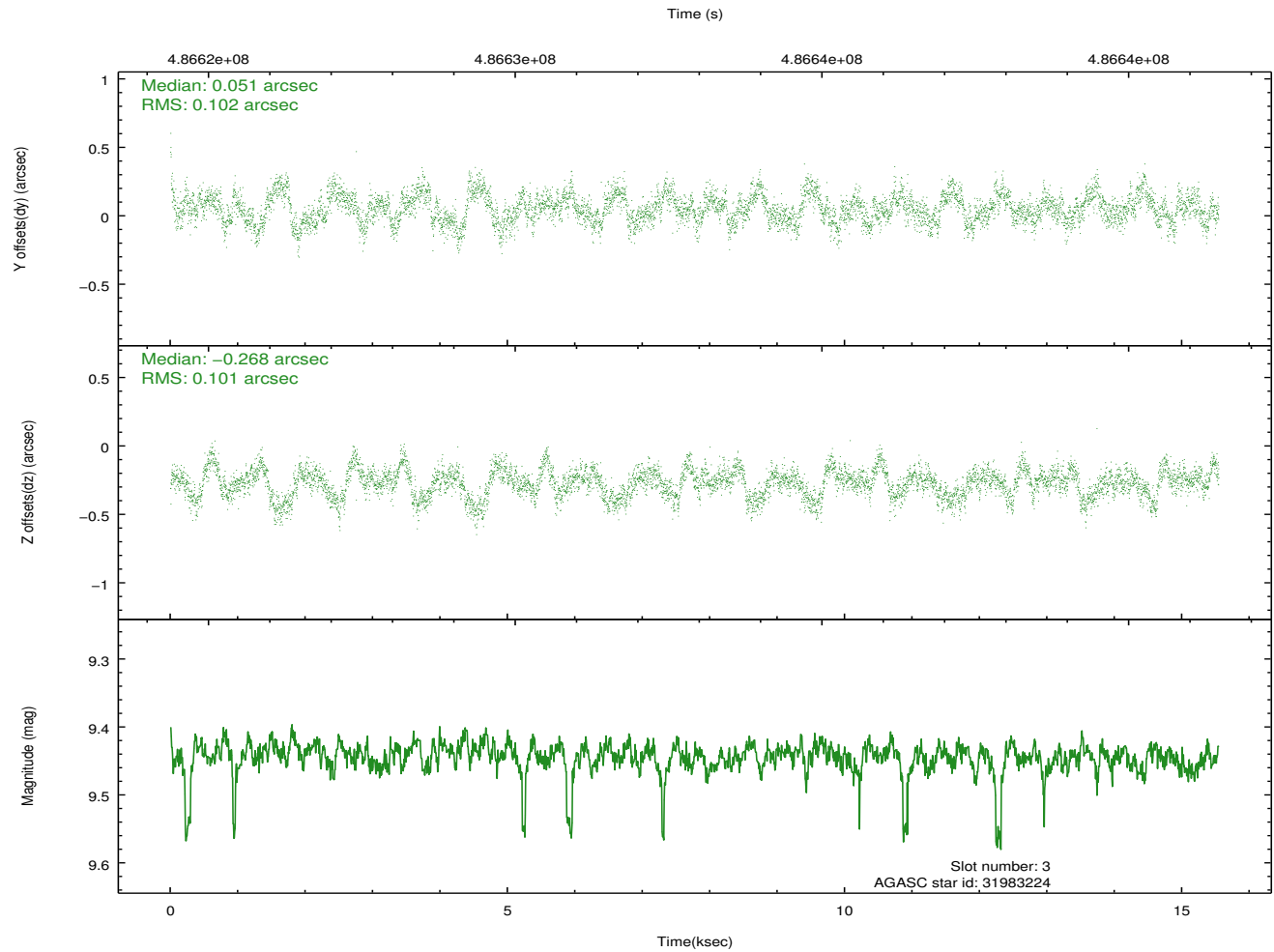
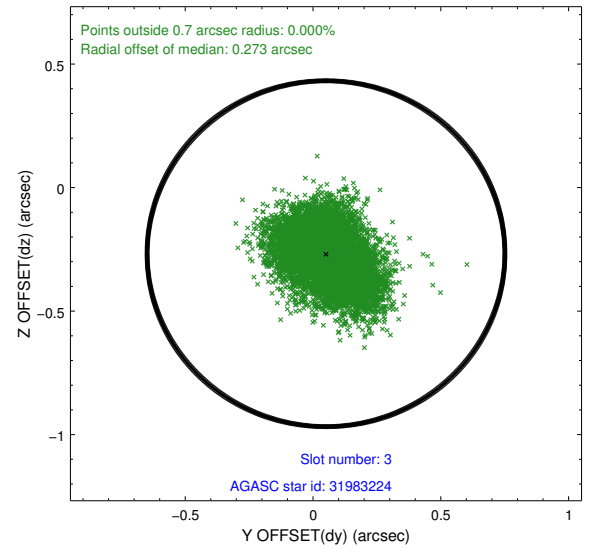
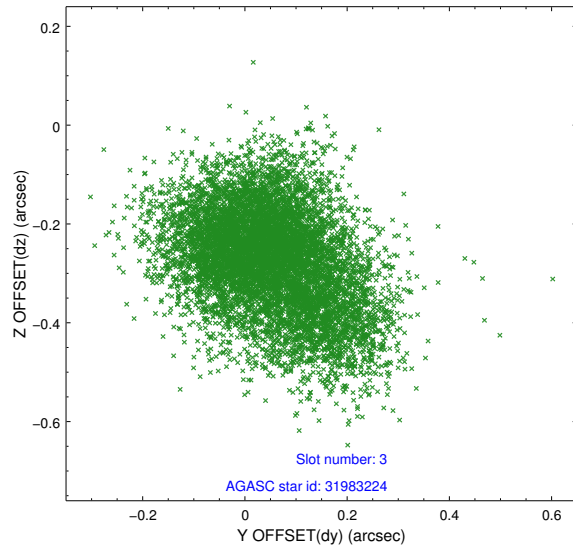


Slot Statistics

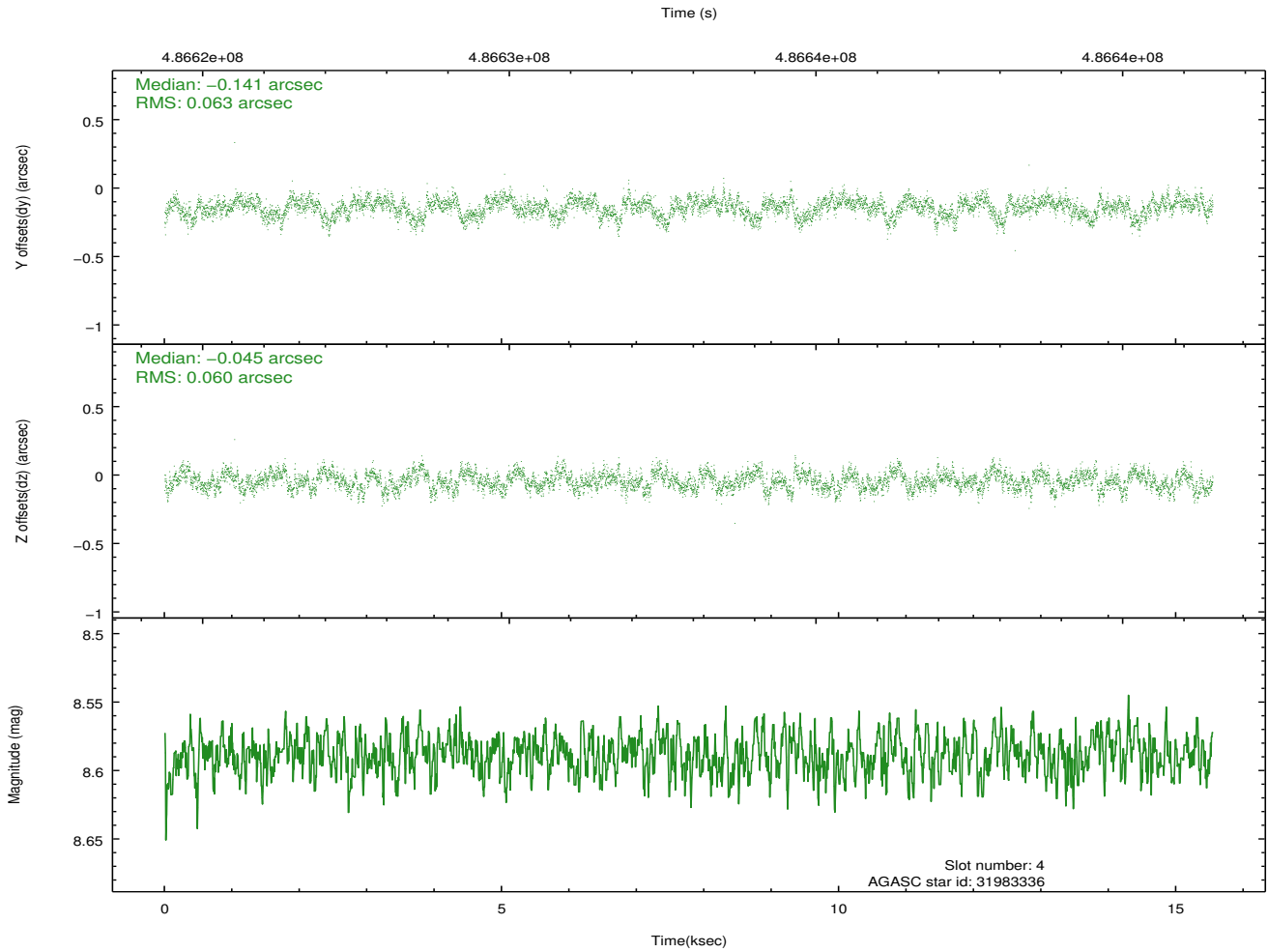
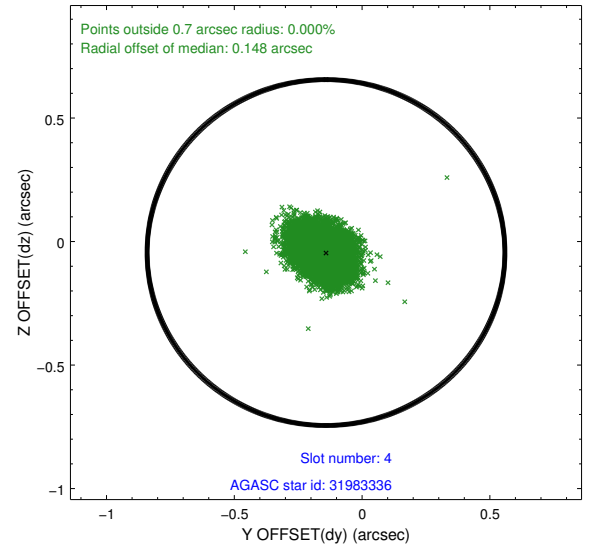
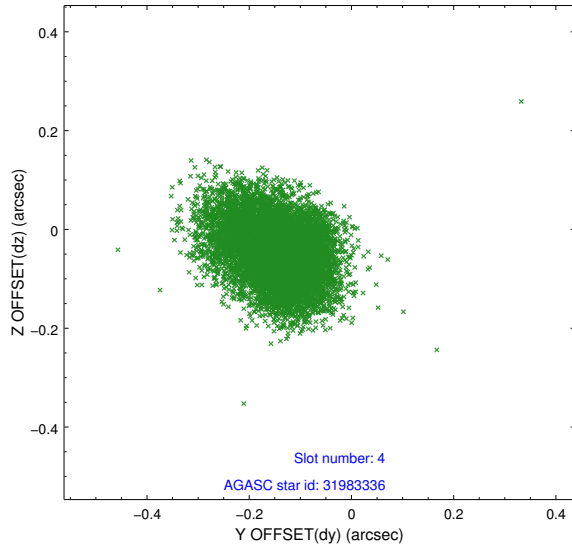
slot	status	used	id	mag	n_pts	med_dy	med_dz	dr1	dr2	ra	dec	mean_y	mean_z
0	FID		ACIS-I-2	7.01	3791	-0.168	-0.128	0.010	0.018	0.000000	0.000000	-779.74	-851.69
1	FID		ACIS-I-4	7.07	3792	0.348	0.126	0.007	0.011	0.000000	0.000000	2134.67	1054.63
2	FID		ACIS-I-5	7.09	3791	-0.281	0.071	0.009	0.016	0.000000	0.000000	-1833.35	1052.70
3	GUIDE	used	31983224	9.44	7557	0.051	-0.268	0.152	0.250	150.543757	1.869948	2227.70	250.57
4	GUIDE	used	31983336	8.59	7582	-0.141	-0.045	0.092	0.149	150.429924	2.291234	935.46	-642.35
5	GUIDE	used	31985760	8.45	7578	-0.235	0.041	0.093	0.144	150.924581	2.094394	1008.08	1271.47
6	GUIDE	used	31986152	8.98	7550	0.143	0.216	0.139	0.235	150.840314	2.057585	1234.69	1030.18
7	GUIDE	used	32386456	9.22	7582	0.199	0.067	0.115	0.188	150.309862	3.285518	-2293.56	-2245.78

2.4 Star Slots

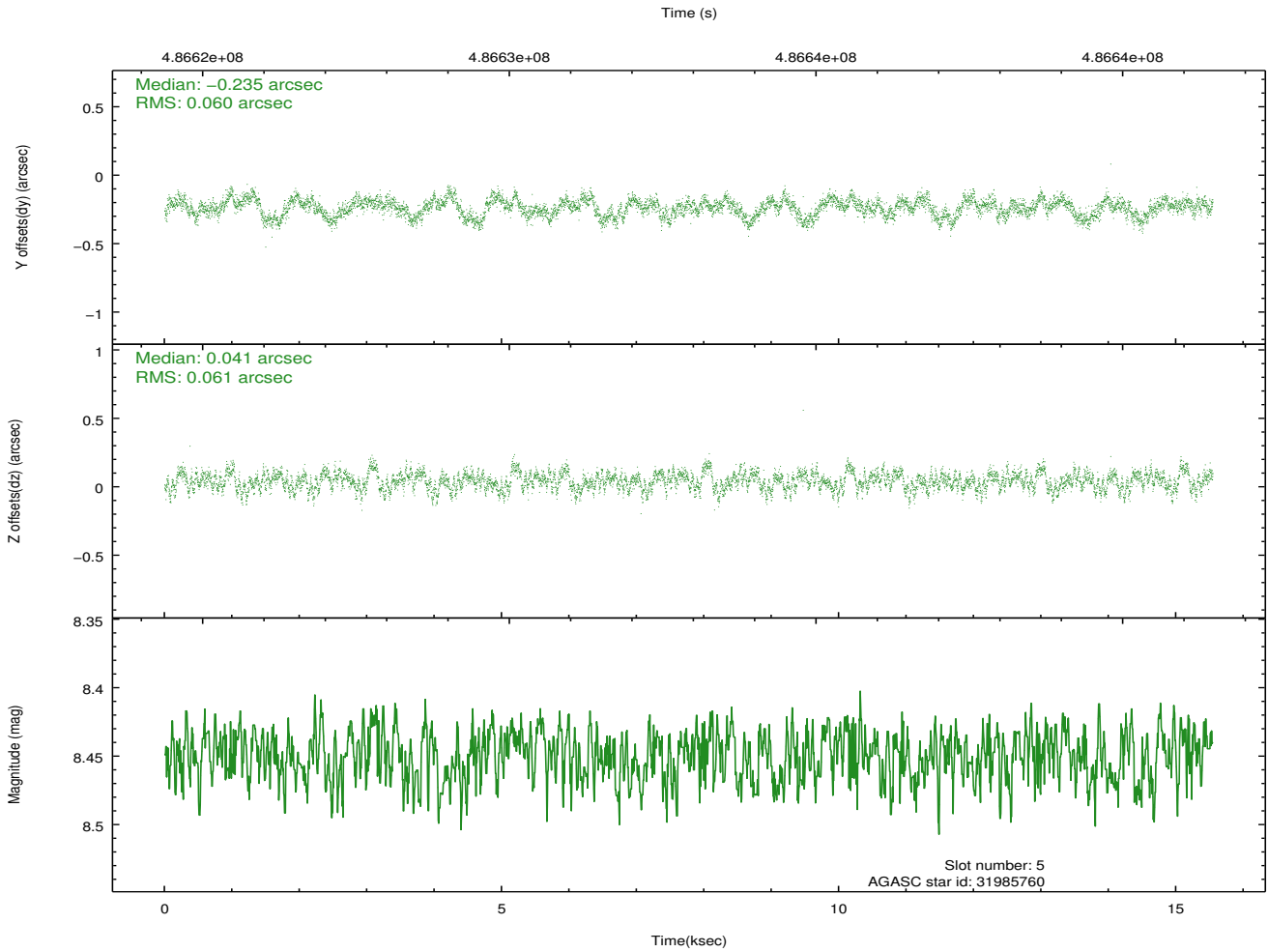
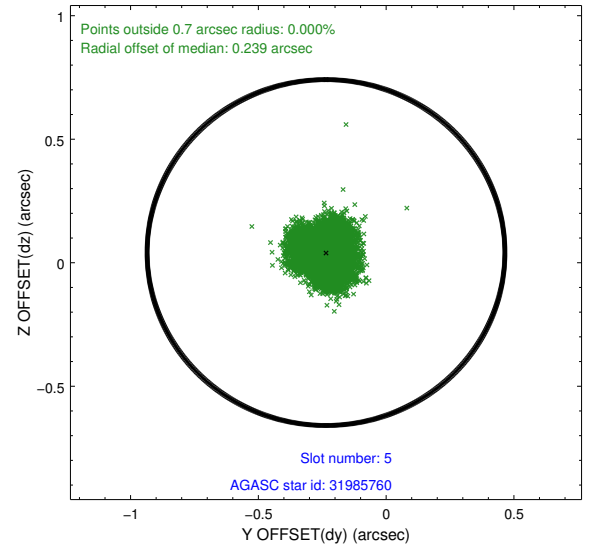
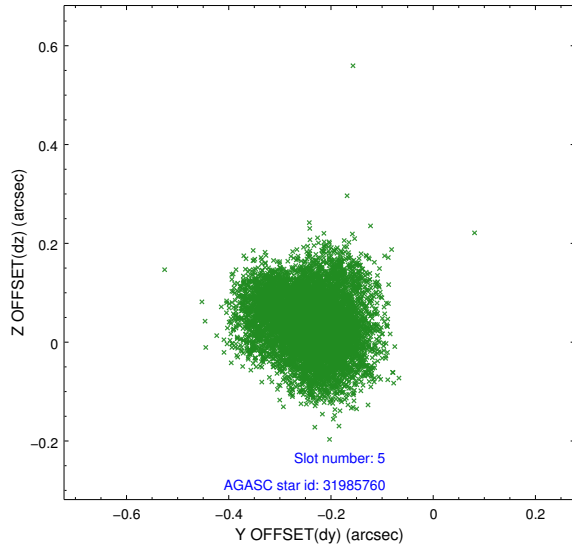
2.4.1 Slot 3



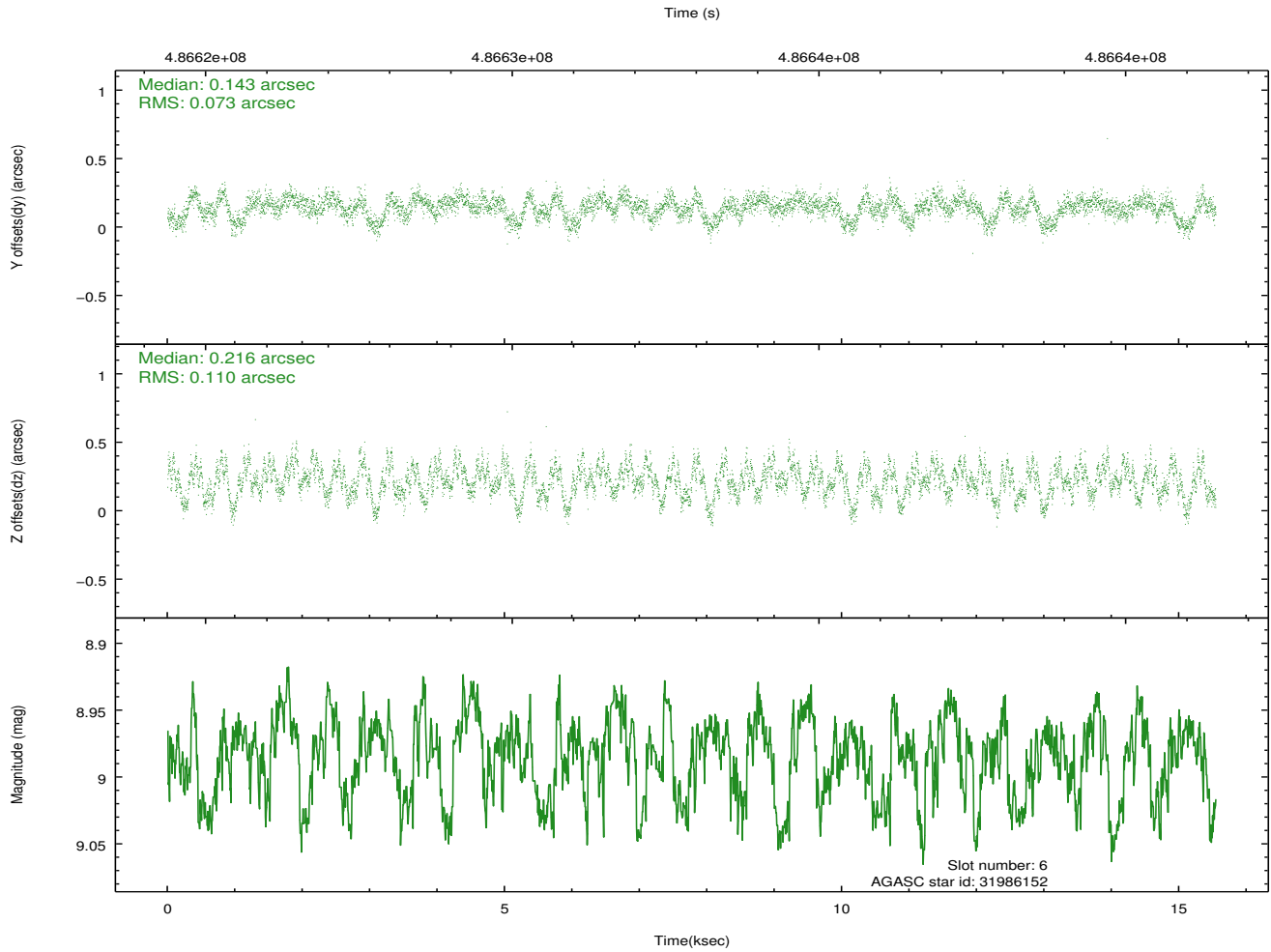
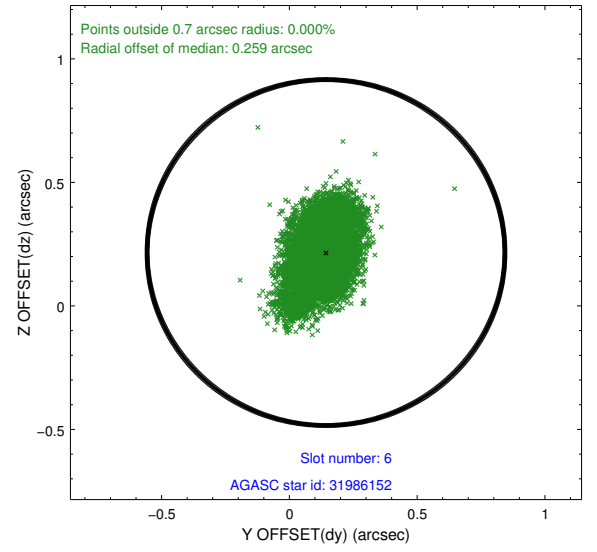
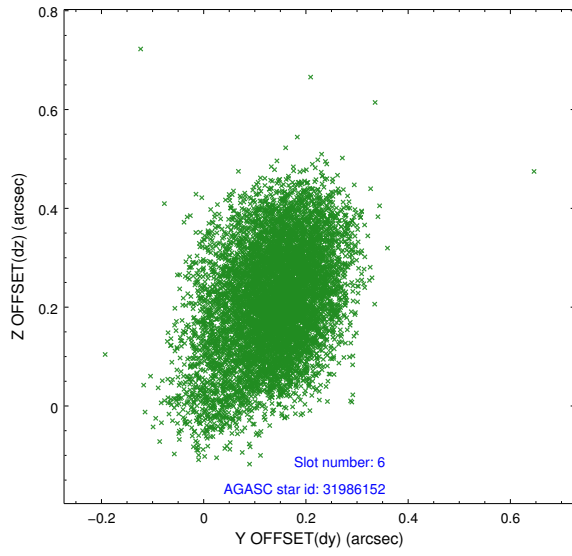
2.4.2 Slot 4



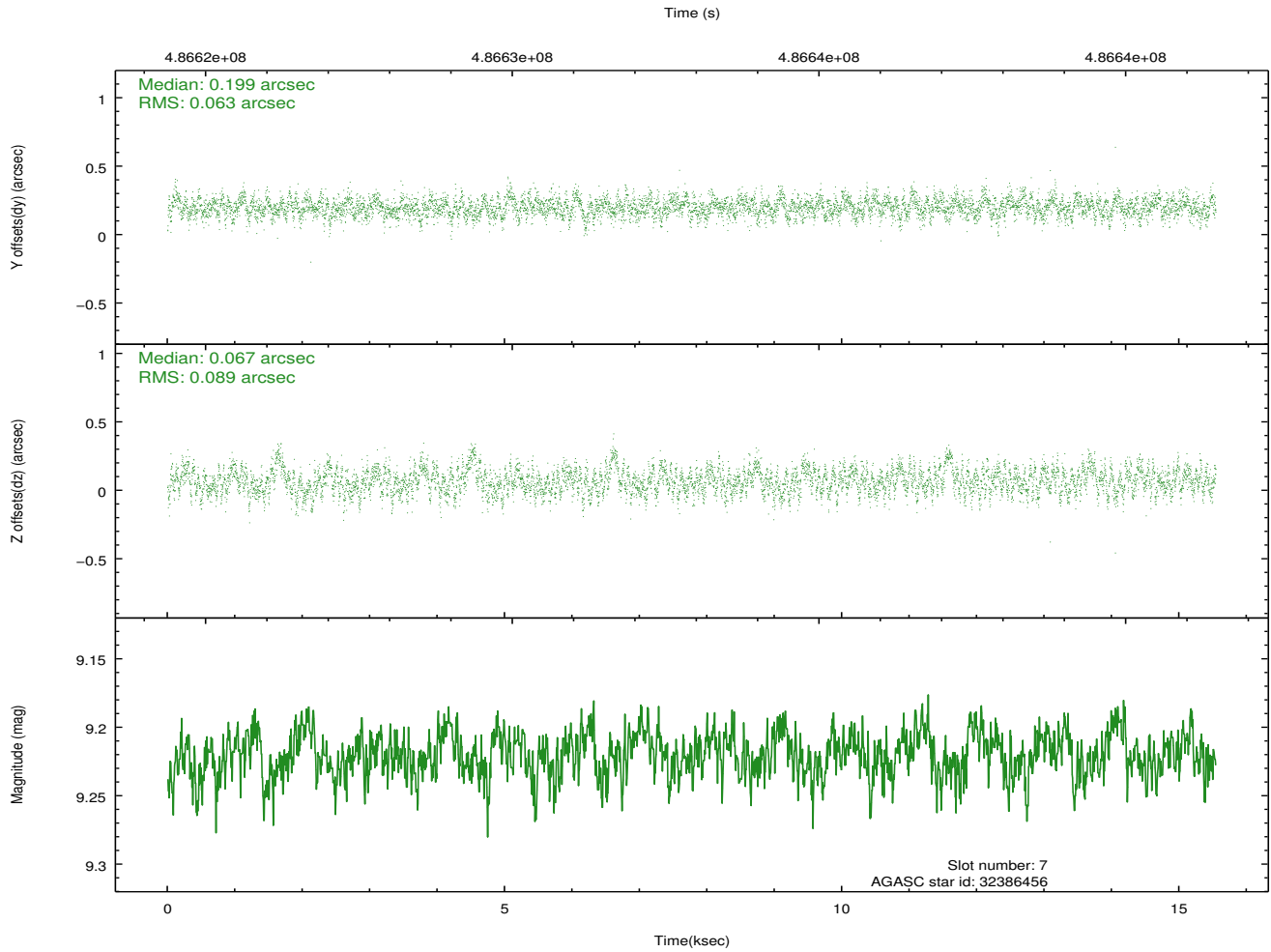
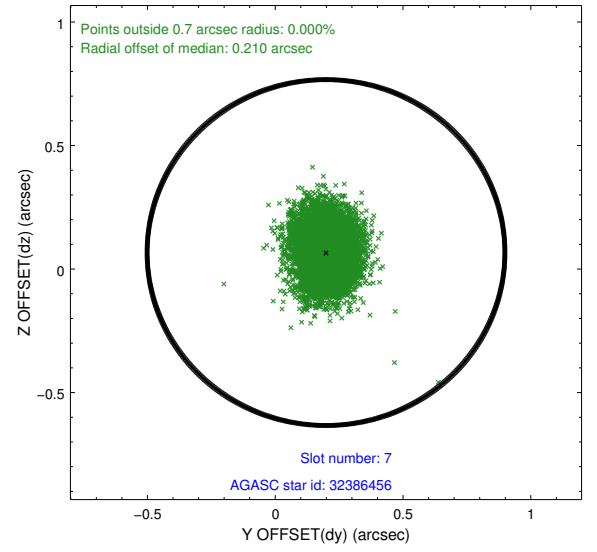
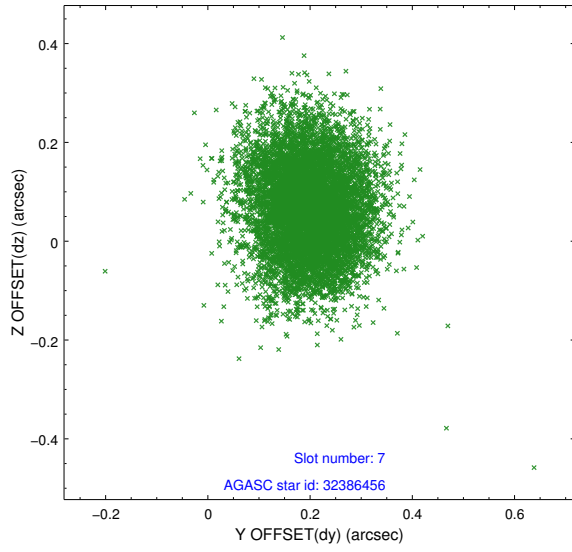
2.4.3 Slot 5



2.4.4 Slot 6

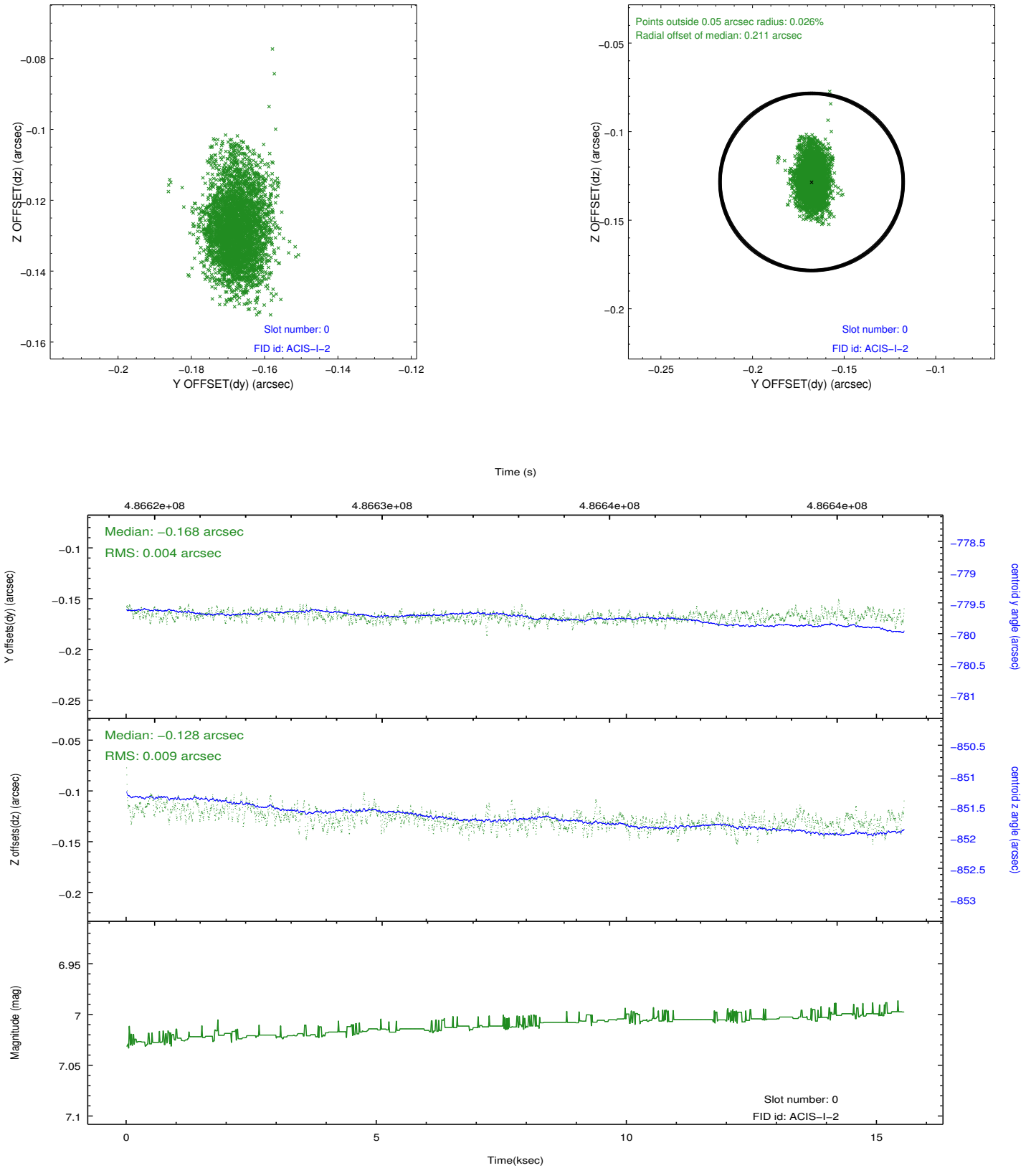


2.4.5 Slot 7

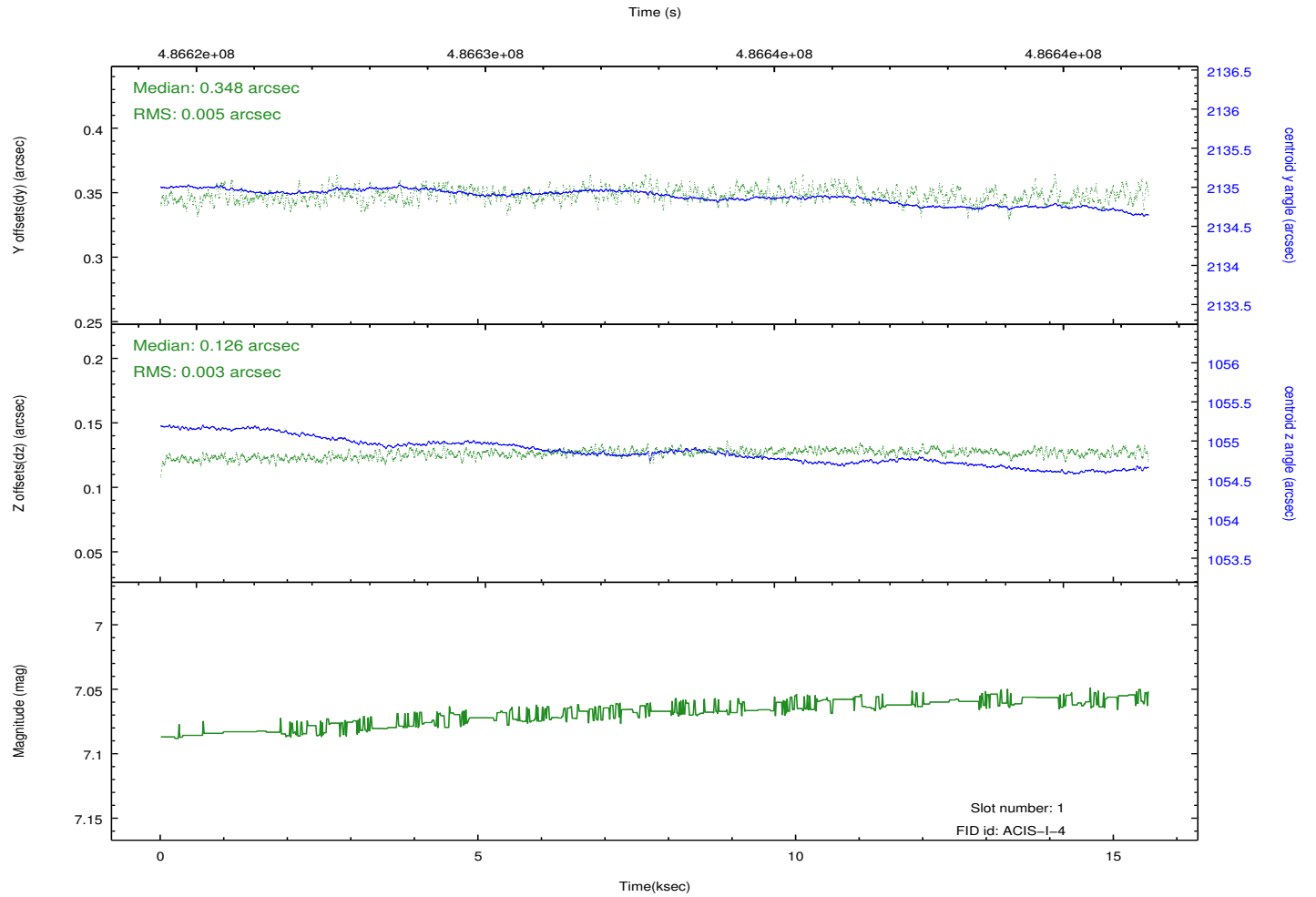
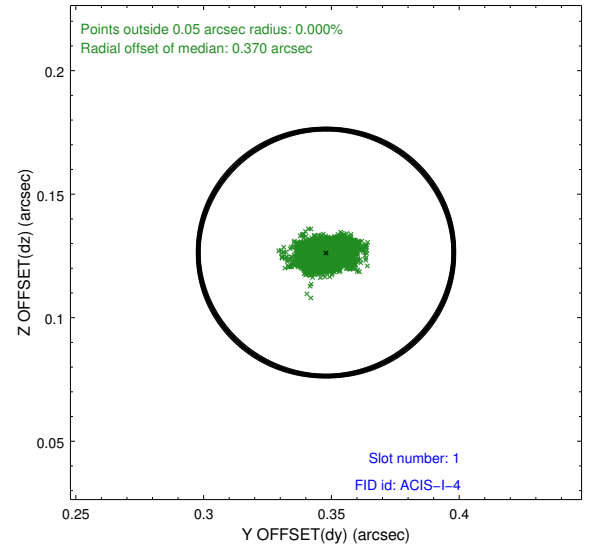
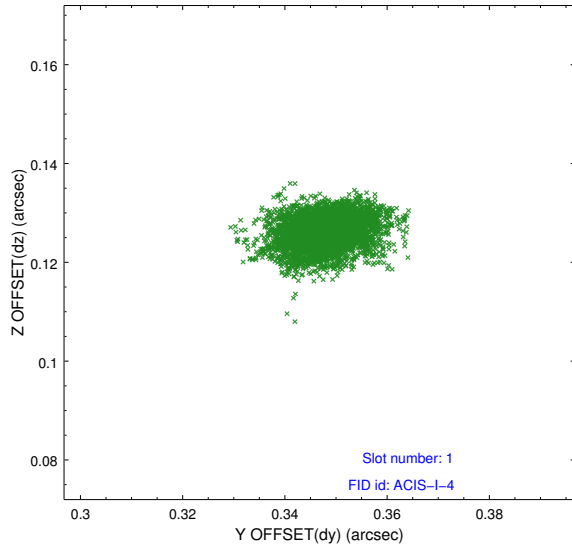


2.5 FID Slots

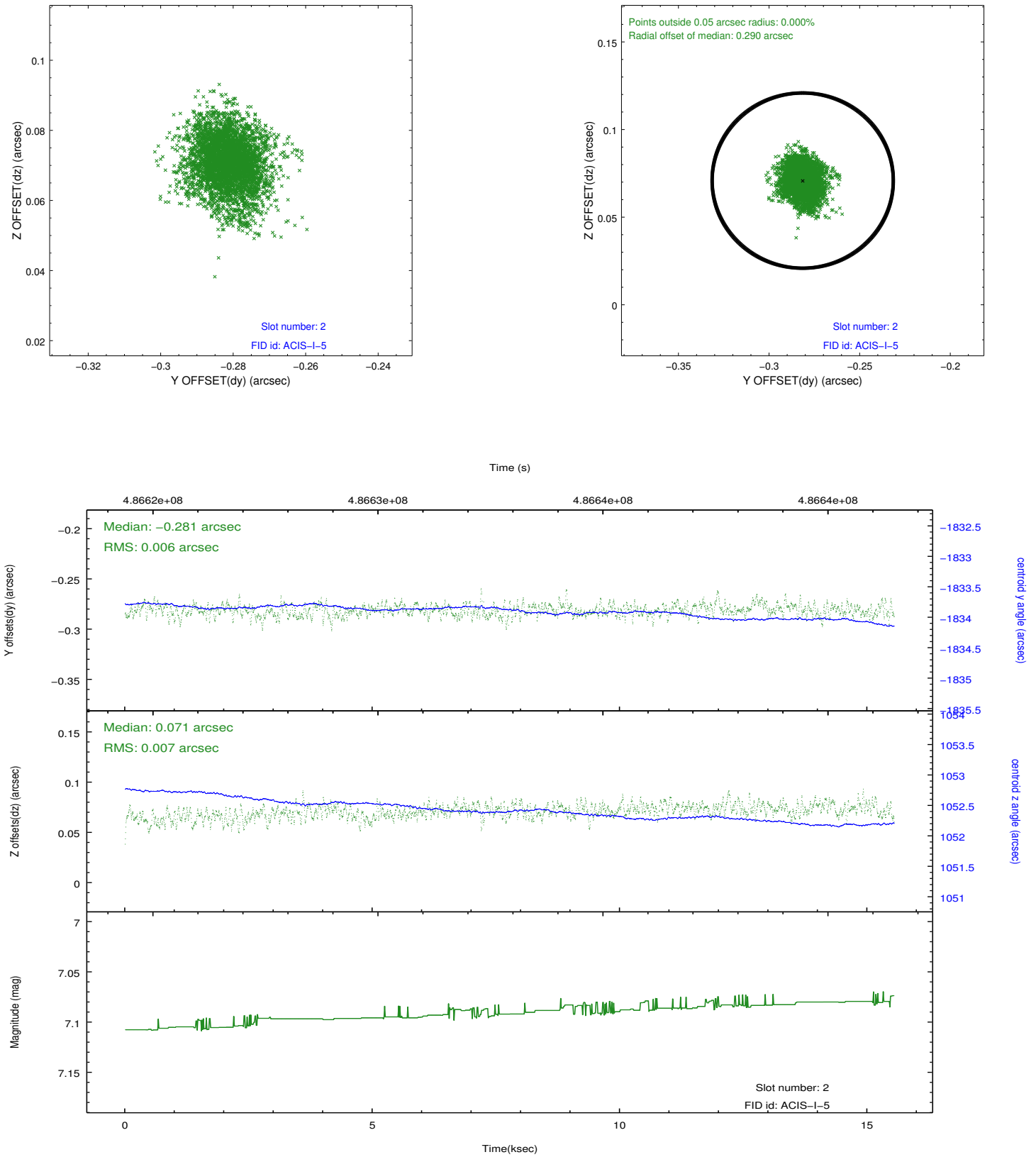
2.5.1 Slot 0



2.5.2 Slot 1



2.5.3 Slot 2



A Summary

A.1 Status

V&V Scientist	Jen Lauer
V&V Date (YYYY-MM-DD)	2014.12.11
V&V Edition	1
V&V Disposition and Status	OK
V&V Charge Time	15.453500118852

A.2 Comments

Roll constraint met.

=====

These data have been reprocessed with new aspect alignment calibration files that correct small mean offsets (up to 0.4 arcsecs) and improve overall astrometric accuracy. The new calibration was determined using data from the time period being reprocessed and was performed using cross-correlation of X-ray sources with radio and optical counterparts.