

V&V Reference Report

L2 ASCDS Version : 8.4.3

Observation 14259 - L2 Version 1
Chandra X-Ray Center

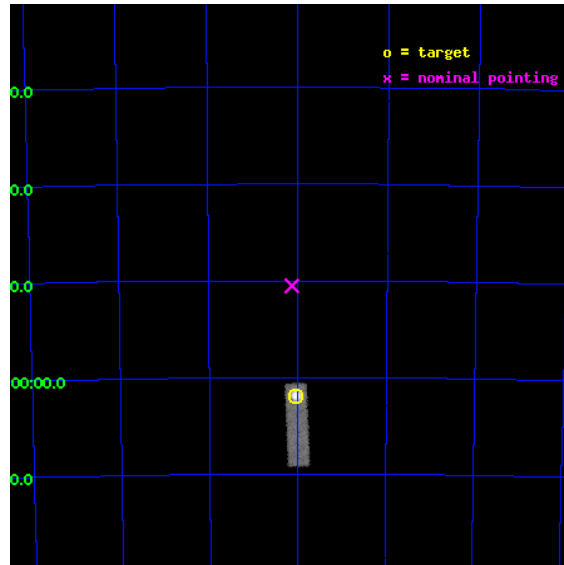
L2 Processing Date : Jan 15 2012

Contents

1	Front	2
2	OBI	3
2.1	OBI	3
2.1.1	Images	3
2.1.2	Bias	3
2.1.3	Parameters	4
2.1.4	Events	4
2.2	Compared Parameters	5
2.3	Aspect	6
2.4	Star Slots	9
2.4.1	Slot 3	9
2.4.2	Slot 4	10
2.4.3	Slot 5	11
2.4.4	Slot 6	12
2.4.5	Slot 7	13
2.5	FID Slots	14
2.5.1	Slot 0	14
2.5.2	Slot 1	15
2.5.3	Slot 2	16
A	Summary	17
A.1	Status	17
A.2	Comments	17

1 Front

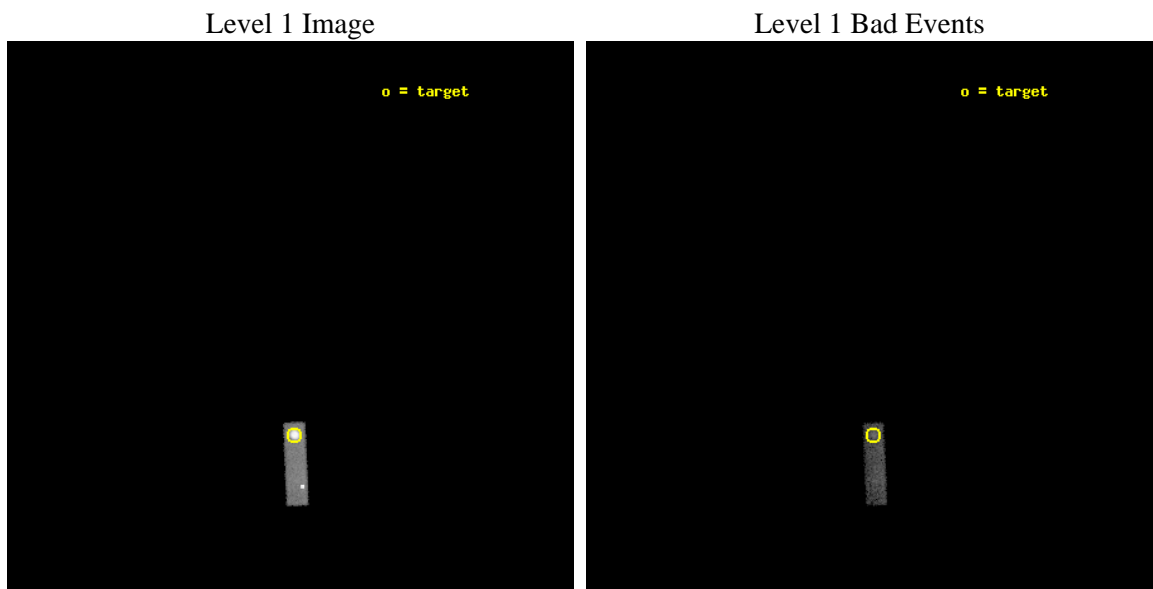
seq_num	590512	Sequence number
obs_id	14259	Observation id
title	AO-13 Calibration Observations of E0102-72	Proposal title
observer	Dr. CXC Calibration	Principal investigator
object	E0102-72 S1,-120,11.50,0,0	Source name
dtcycle	0	
cycle	P	events from which exps? Prim/Second/Both
ra_targ	16.01	Observer's specified target RA [deg]
dec_targ	-72.032028	Observer's specified target Dec [deg]
ra_nom	16.033456052674	Nominal RA [deg]
dec_nom	-71.842119345397	Nominal Dec [deg]
roll_nom	267.48380548479	Nominal Roll [deg]
revision	1	Processing version of data
ontime	10029.600149512	Sum of GTIs [s]
livetime	9540.1884804645	Livetime [s]
ontime5	10029.600149512	Sum of GTIs [s]
l2events	54266	Number of level 2 events



2 OBI

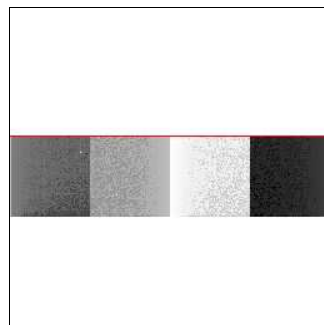
2.1 OBI

2.1.1 Images



2.1.2 Bias

Chip 5



2.1.3 Parameters

obi_num	0	Obi number	sched_exp_time	10001.907000	[s] Scheduled observation exposure time
ascdsver	8.4.3	Processing system revision	ontime	10029.600149512	Sum of GTIs [s]
caldsver	4.4.7	 	ontime5	10029.600149512	Sum of GTIs [s]
date	2012-01-16T00:24:57	Date and time of file creation	l1events	76625	Number of level 1 events
revision	1	Processing version of data			

2.1.4 Events

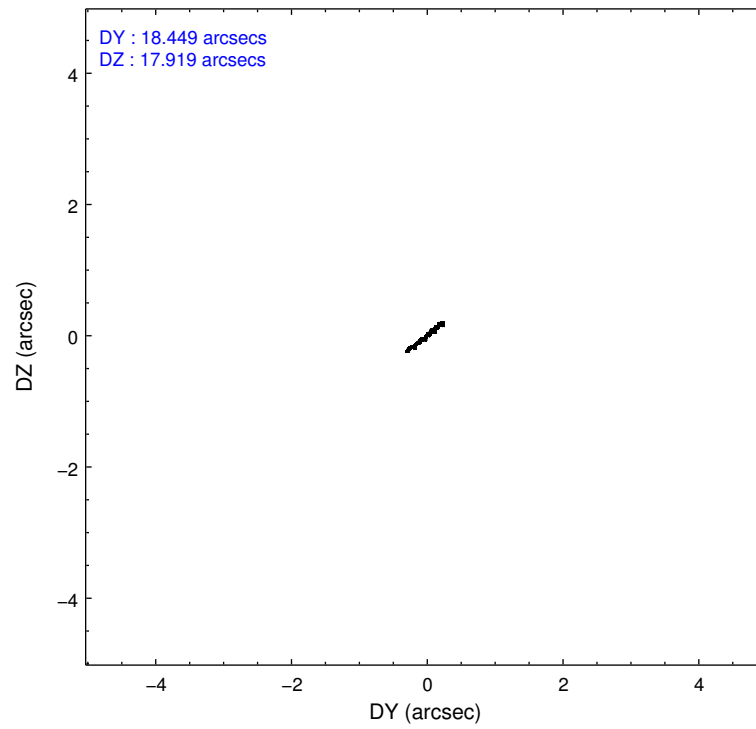
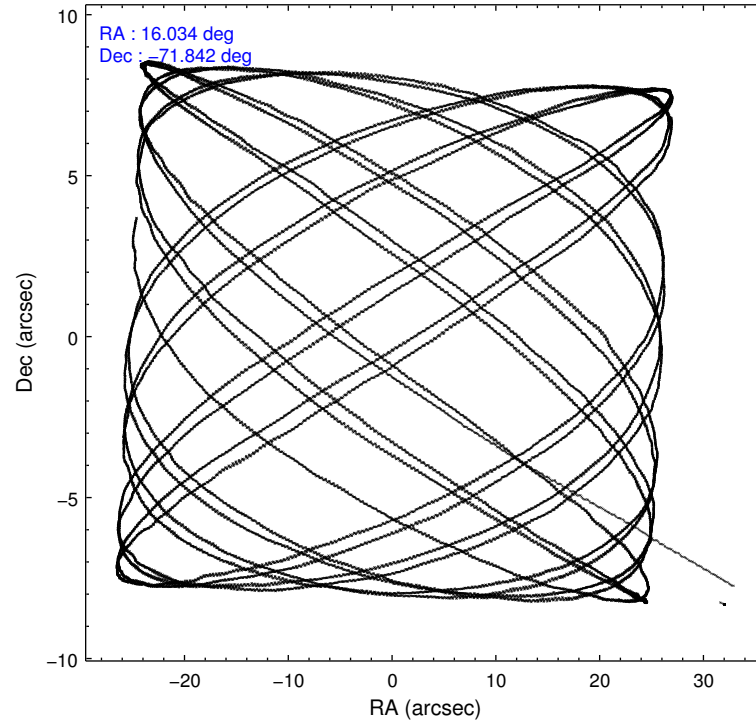
	ccd 5
level 1 events	76625
rejected events	10341
rejected %	13%

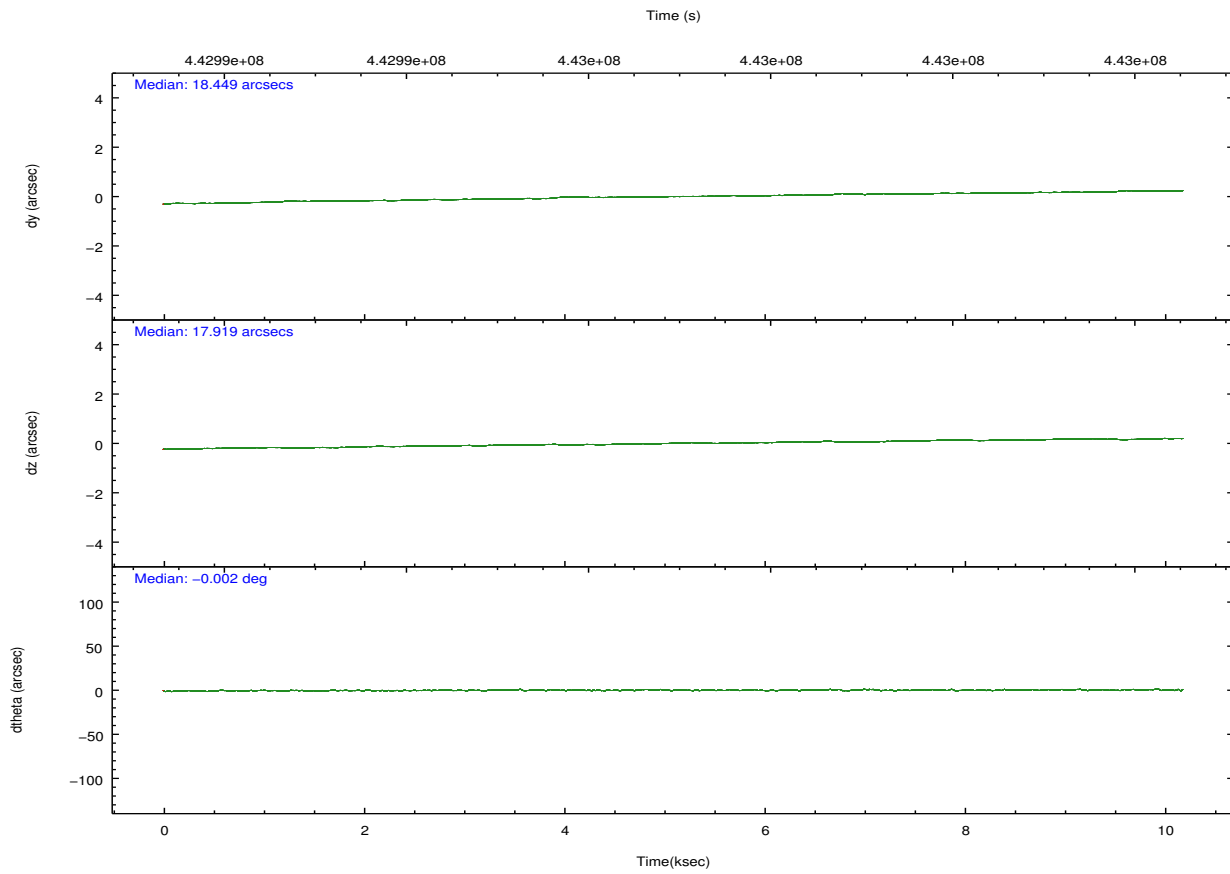
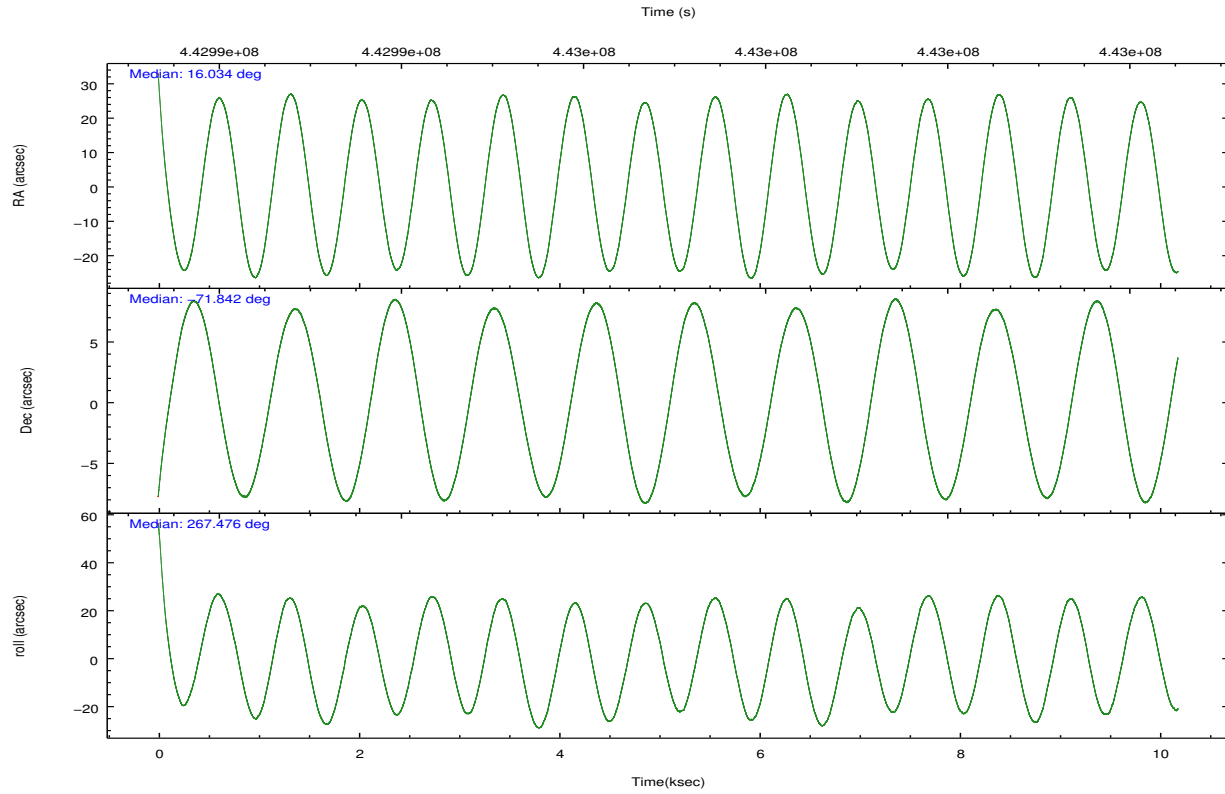
	ccd 5
grade 0 events	30804
	40%
grade 1 events	102
	0%
grade 2 events	16689
	21%
grade 3 events	4851
	6%
grade 4 events	4946
	6%
grade 5 events	2195
	2%
grade 6 events	9005
	11%
grade 7 events	8033
	10%

2.2 Compared Parameters

Parameter	Planned	Actual	Parameter	Planned	Actual
Instrument	ACIS	ACIS	Obspar format version number	7	7
Detector	ACIS-5	ACIS-5	Obspar file type	PREDICTED	ACTUAL
Grating	NONE	NONE	Obspar update status	NONE	UPDATED
Data mode	VFAINT	VFAINT	Number of optional ACIS chips dropped	0	0
Observation mode	POINTING	POINTING	On-chip summing requested	N	N
[deg] Pointing RA	15.992033	16.03345605267374	Subarray requested	CUSTOM	1/4
[deg] Pointing Dec	-71.818018	-71.84211934539744	Subarray start row	360	360
[deg] Pointing Roll	267.287814	267.483805484785	Subarray row count	256	256
[s] Window start time (MET)	439084866.184000	439084866.184000	Alternating exposures requested	N	N
[s] Window stop time (MET)	452131266.184000	452131266.184000	[s] Primary exposure time	0.000000	0.8
[mm] SIM focus pos	-0.684267	-0.6828225247311905			
[mm] SIM defocus	0	0.001444936568705701			
[mm] SIM translation stage pos	-190.132523	-190.145094680475			
[mm] SIM translation stage offset	0	0.01257209746719923			
[s] Observation start time (MET)	442992011.184000	442991353.31074			
Observation start date	2012-01-15T05:19:05	2012-01-15T05:09:13			
[s] Observation end time (MET)	443002013.184000	443002244.44881			
Observation end date	2012-01-15T08:05:47	2012-01-15T08:10:44			
Read mode	TIMED	TIMED			

2.3 Aspect



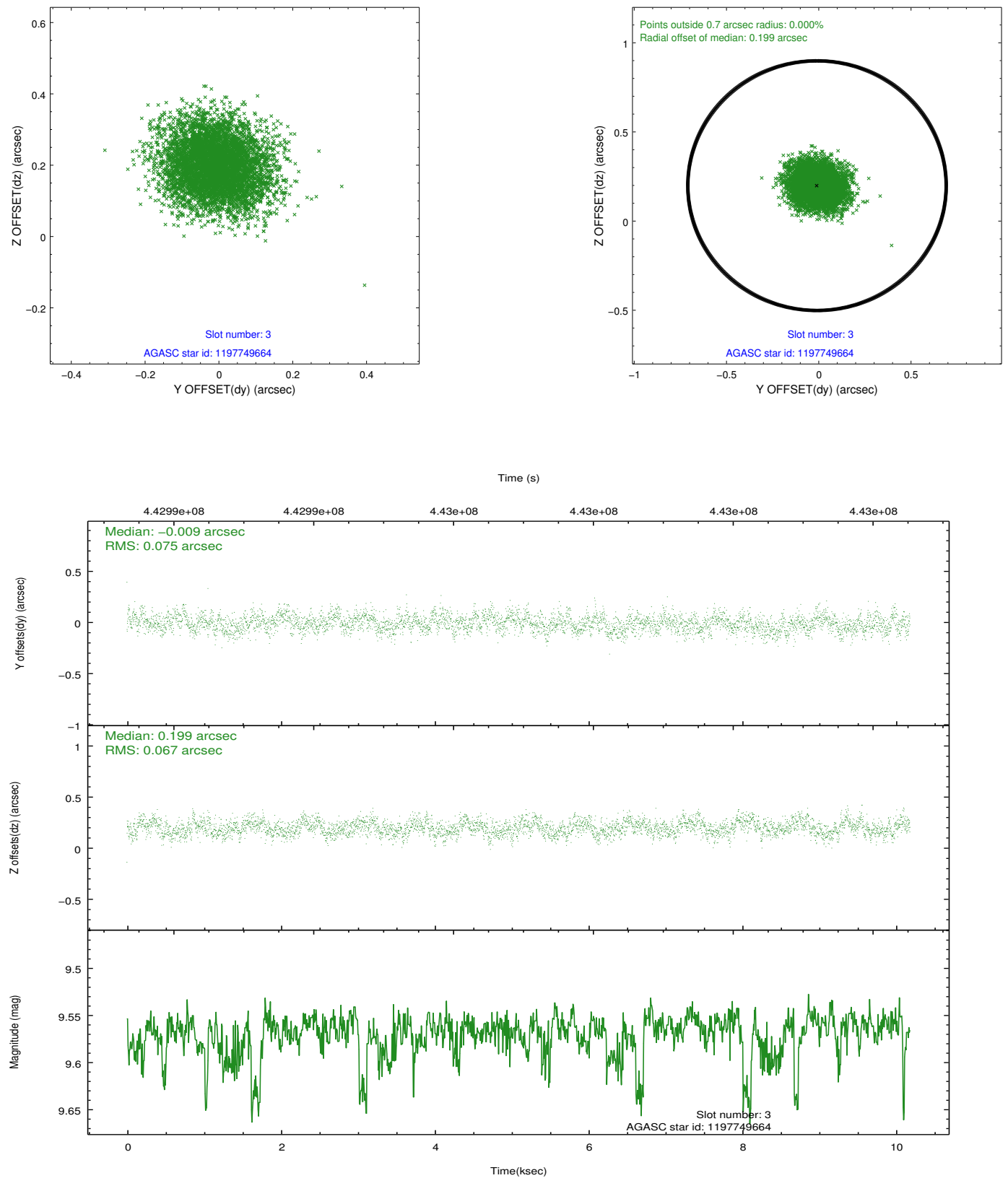


Slot Statistics

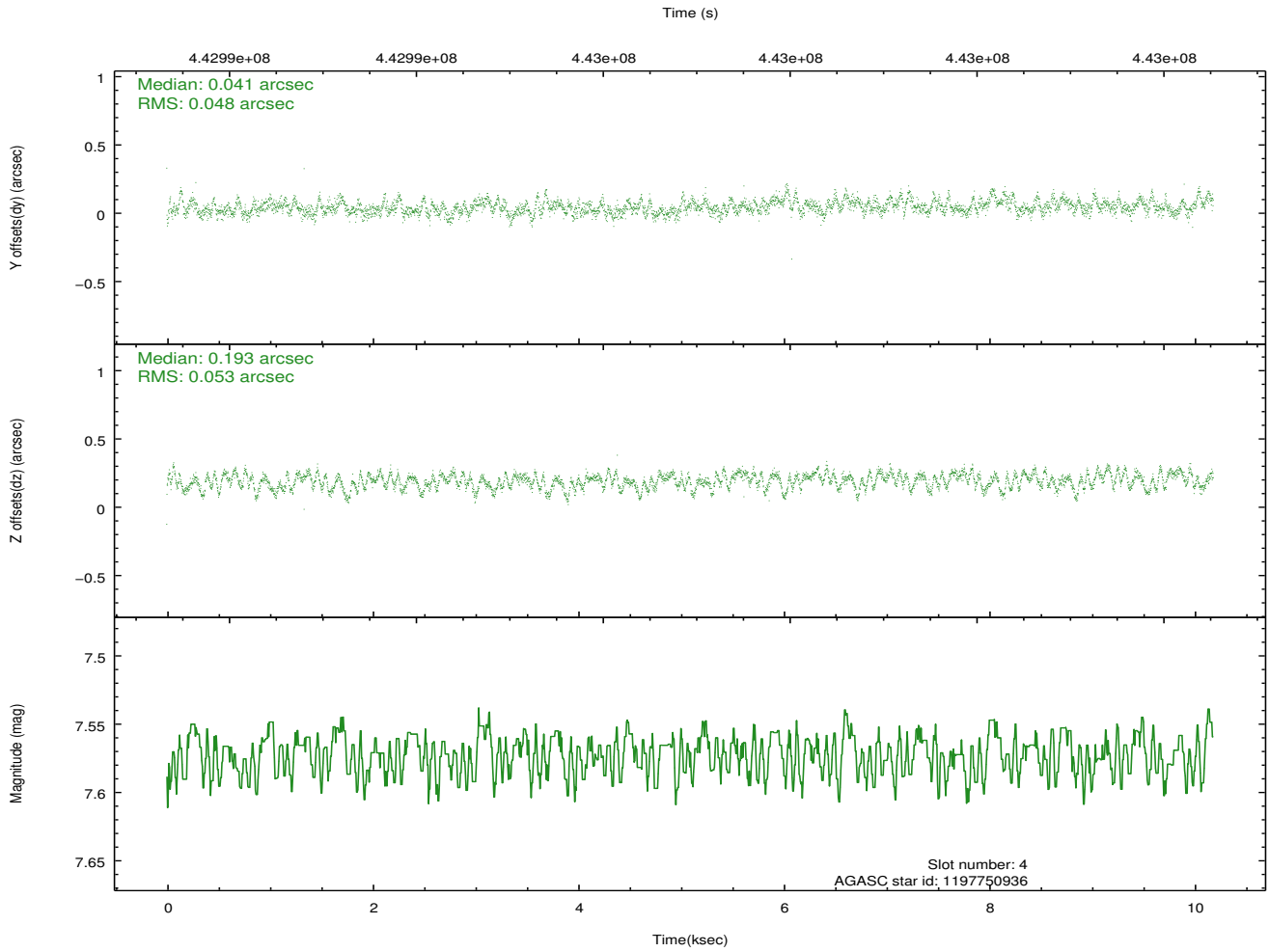
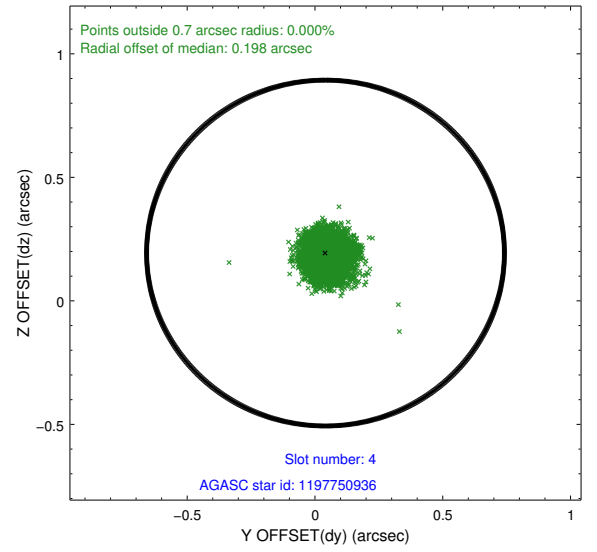
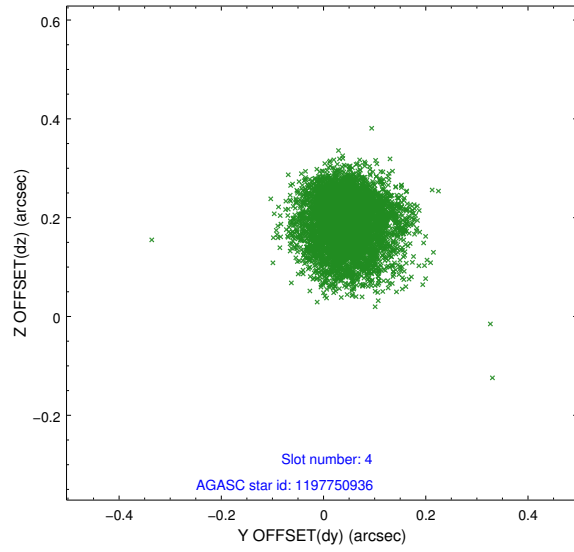
slot	status	id	mag	n_pts	med_dy	med_dz	dr1	dr2	ra	dec	mean_y	mean_z
0	FID	ACIS-S-2	6.92	2485	-0.078	-0.046	0.010	0.014	0.000000	0.000000	-771.63	-1739.29
1	FID	ACIS-S-4	7.00	2485	0.239	0.050	0.008	0.014	0.000000	0.000000	2141.78	168.67
2	FID	ACIS-S-5	7.03	2485	-0.192	0.004	0.008	0.014	0.000000	0.000000	-1823.87	163.00
3	GUIDE	1197749664	9.57	4956	-0.009	0.199	0.107	0.174	15.809015	-72.366369	1981.90	-105.31
4	GUIDE	1197750936	7.57	4968	0.041	0.193	0.076	0.121	15.387940	-71.549550	-927.97	-732.88
5	GUIDE	1197884712	8.30	4963	0.007	-0.211	0.087	0.134	16.087398	-72.252690	1558.45	178.47
6	GUIDE	1197885104	9.34	4958	-0.076	-0.079	0.126	0.201	17.845067	-72.189368	1271.33	2102.28
7	GUIDE	1197885328	7.25	4968	0.030	-0.098	0.070	0.116	16.283090	-71.733943	-317.09	315.23

2.4 Star Slots

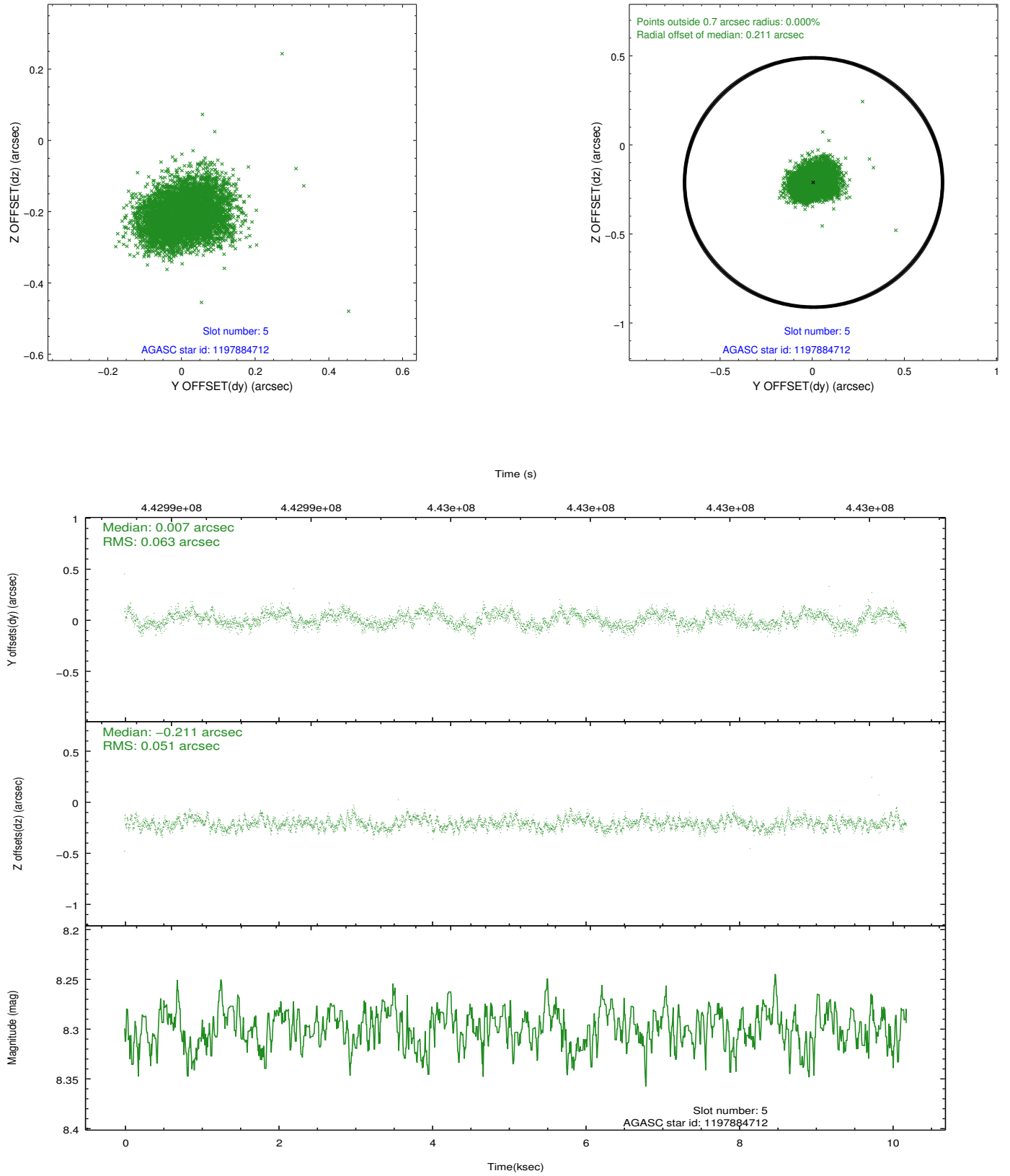
2.4.1 Slot 3



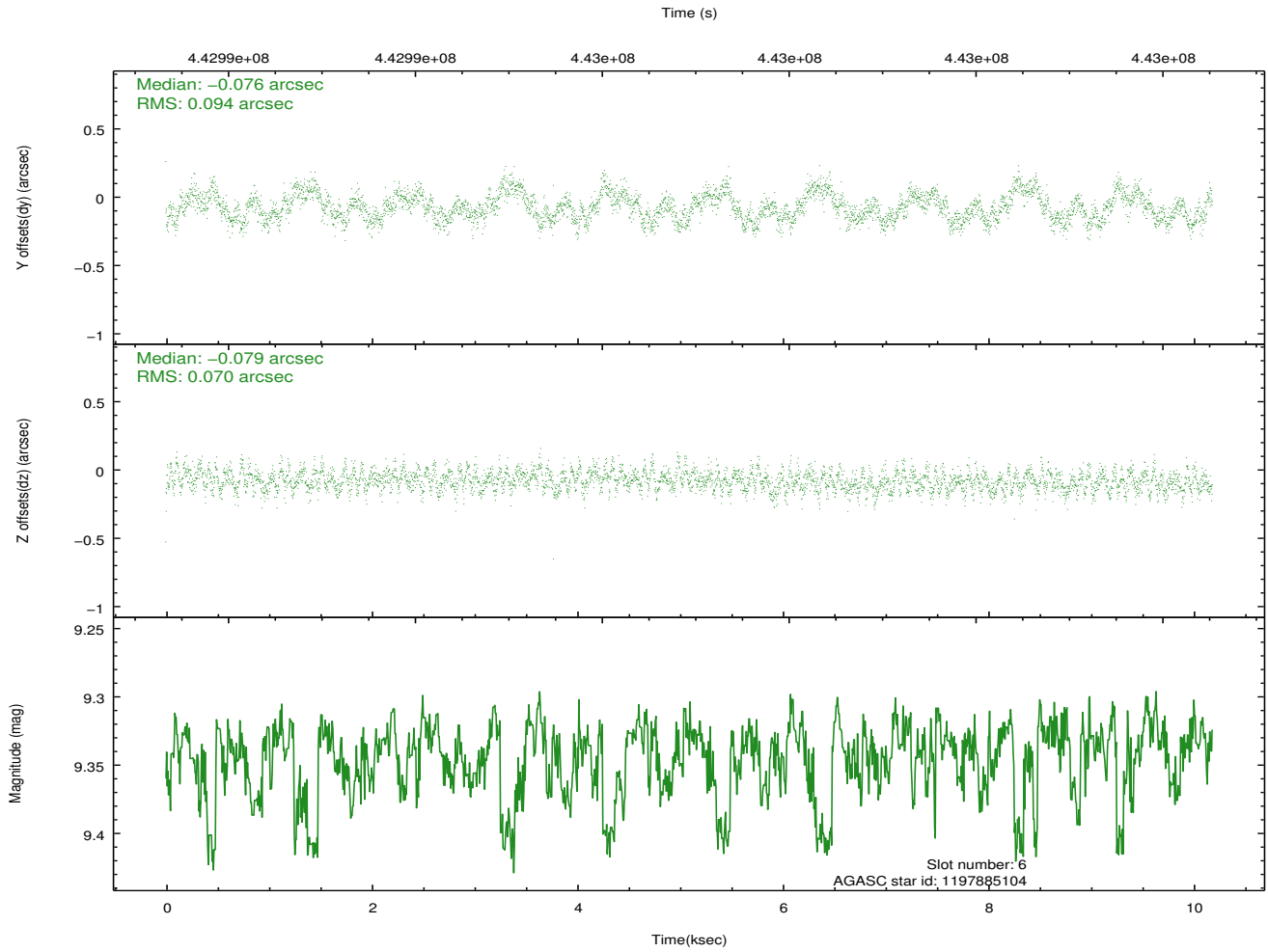
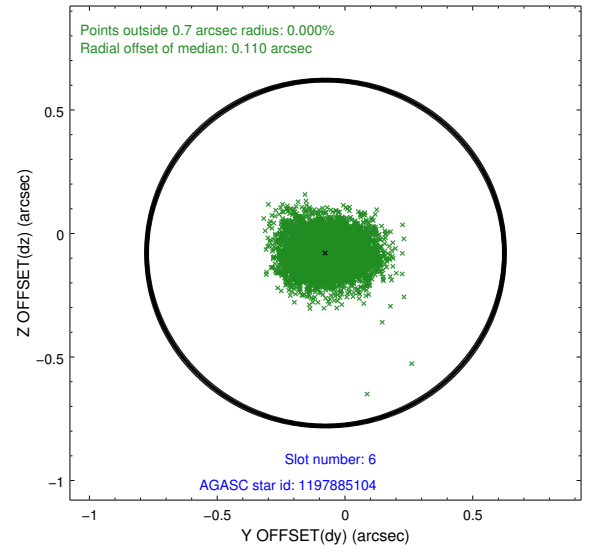
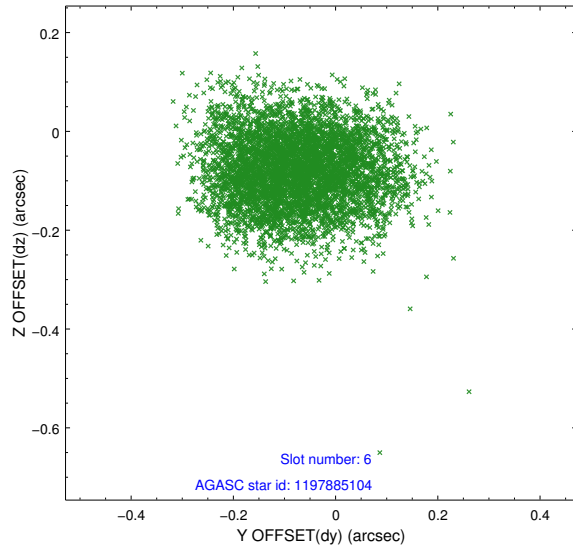
2.4.2 Slot 4



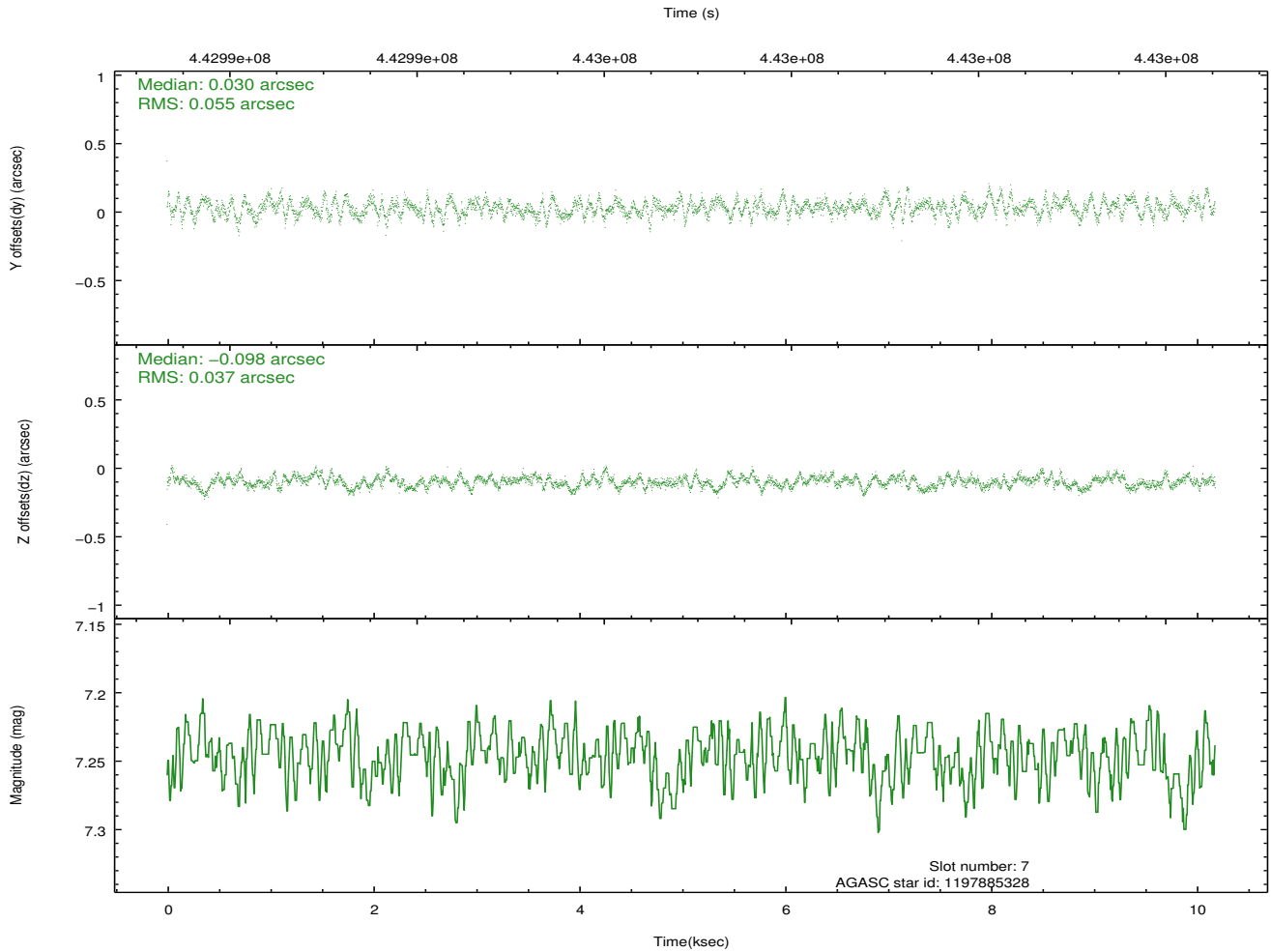
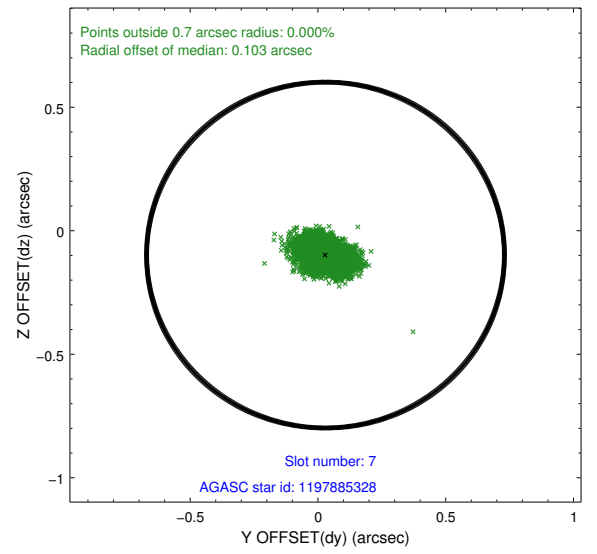
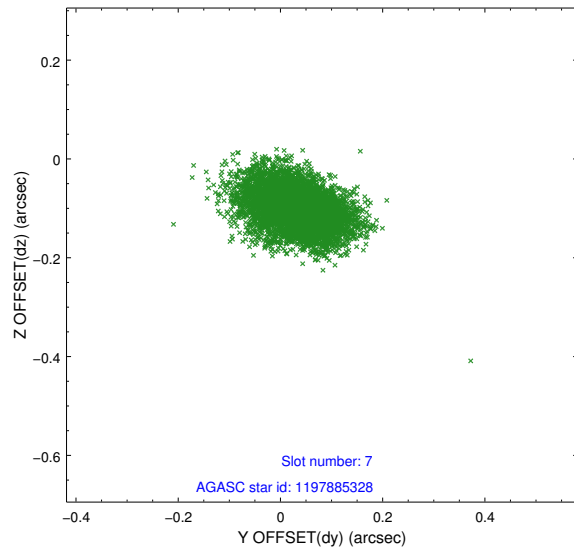
2.4.3 Slot 5



2.4.4 Slot 6

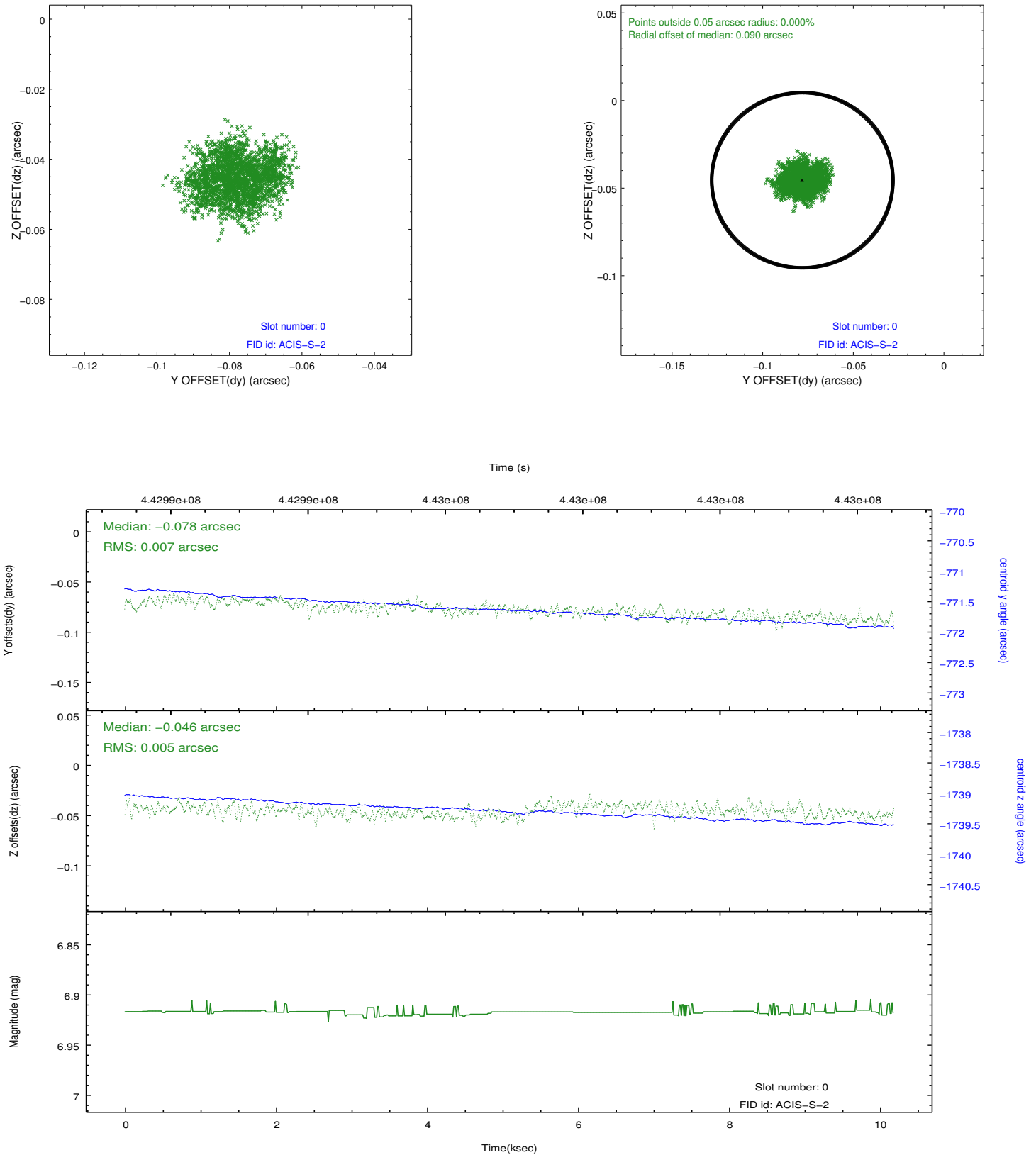


2.4.5 Slot 7

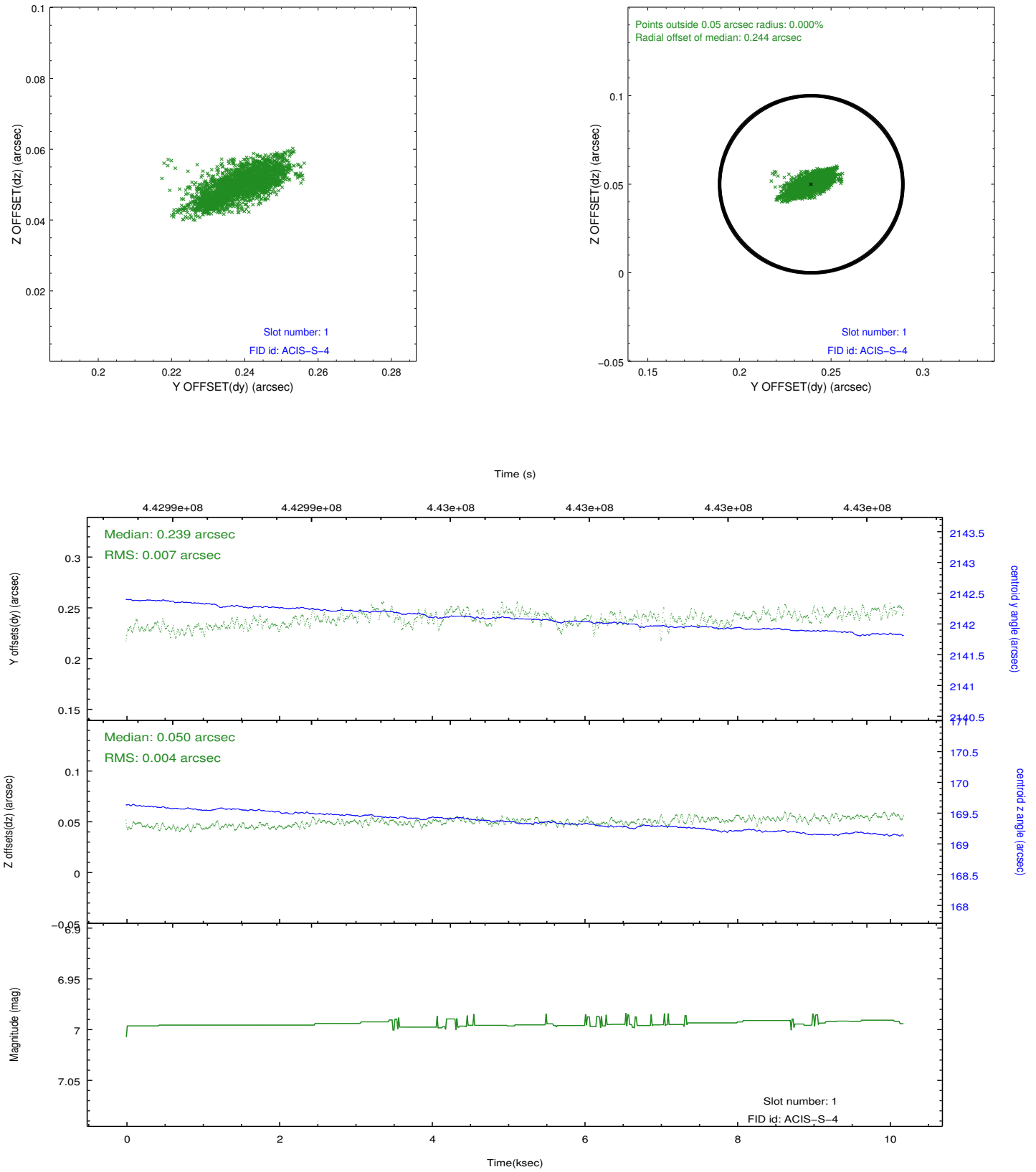


2.5 FID Slots

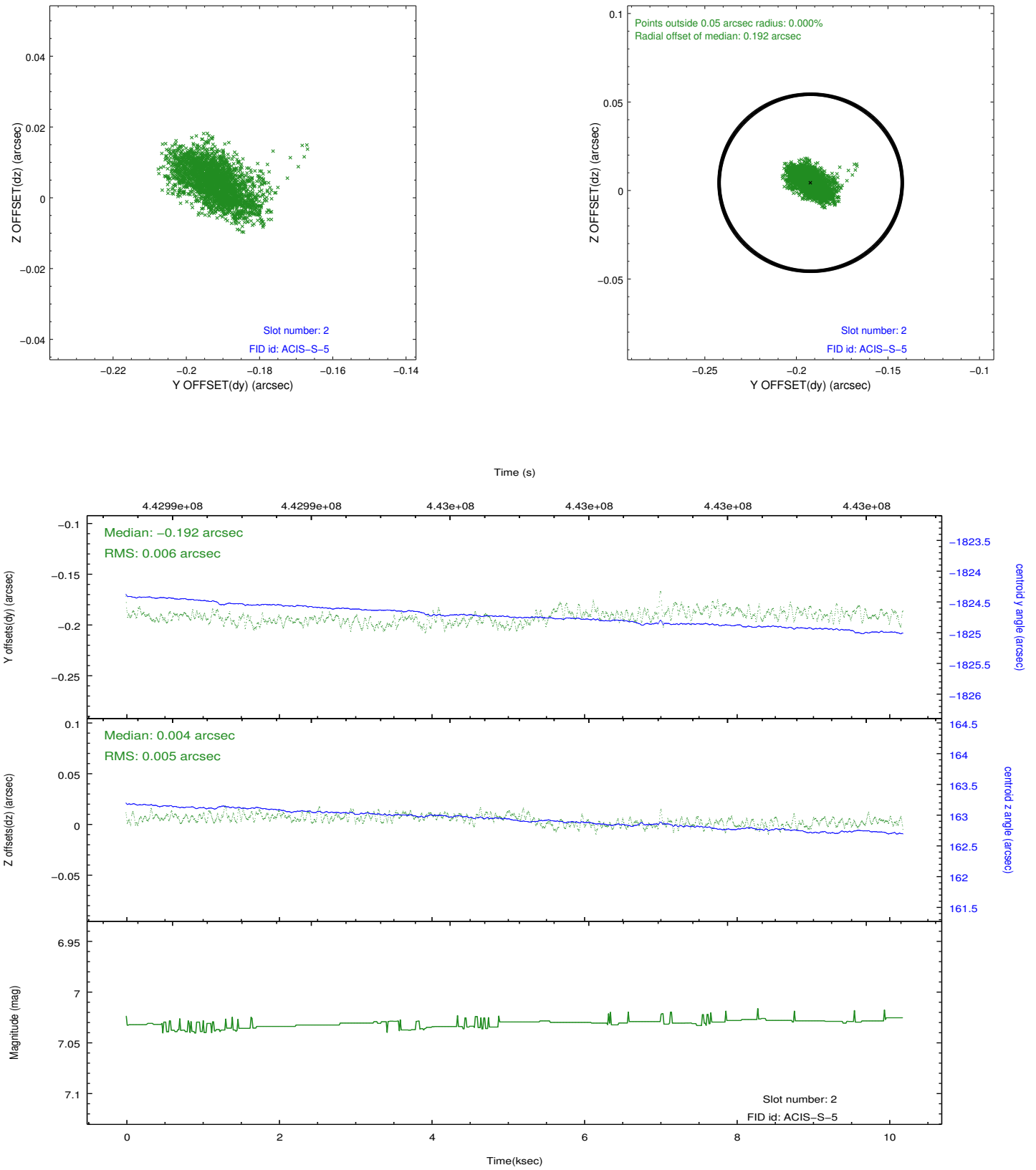
2.5.1 Slot 0



2.5.2 Slot 1



2.5.3 Slot 2



A Summary

A.1 Status

V&V Scientist	Joy Nichols
V&V Date (YYYY-MM-DD)	2012.01.17
V&V Edition	1
V&V Disposition and Status	OK
V&V Charge Time	10.029600149512

A.2 Comments

Target in off-axis position for calibration purposes.