

V&V Reference Report

L2 ASCDS Version : 8.4.5

Observation 13189 - L2 Version 2
Chandra X-Ray Center

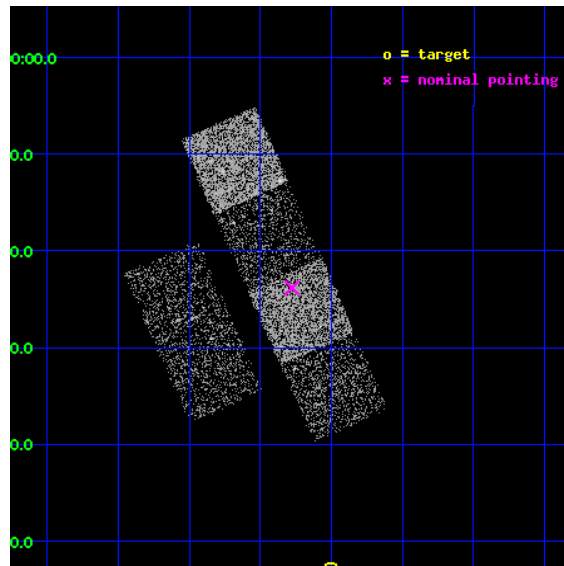
L2 Processing Date : Jul 7 2012

Contents

1	Front	2
2	OBI	3
2.1	OBI	3
2.1.1	Images	3
2.1.2	Bias	3
2.1.3	Parameters	4
2.1.4	Events	4
2.2	Compared Parameters	5
2.3	Aspect	6
2.4	Star Slots	9
2.4.1	Slot 3	9
2.4.2	Slot 4	10
2.4.3	Slot 5	11
2.4.4	Slot 6	12
2.4.5	Slot 7	13
2.5	FID Slots	14
2.5.1	Slot 0	14
2.5.2	Slot 1	15
2.5.3	Slot 2	16
A	Summary	17
A.1	Status	17
A.2	Comments	17

1 Front

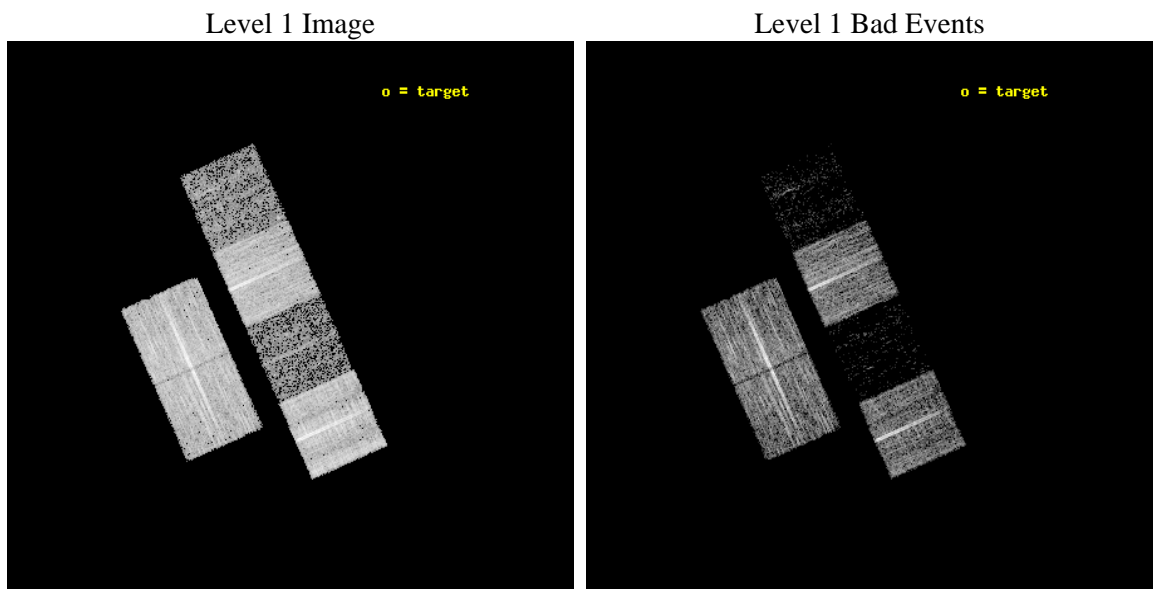
seq_num	100091	Sequence number
obs_id	13189	Observation id
title	Comet 103P/Hartley 2 During the EPOXI Spacecraft Encounter	Proposa
observer	Dr. Carey Lisse	Principal investigator
object	103P/Hartley 2	Source name
dtcycle	0	
cycle	P	events from which exps? Prim/Second/Both
ra_targ	113.0	Observer's specified target RA [deg]
dec_targ	-7.883333	Observer's specified target Dec [deg]
ra_nom	113.06952426856	Nominal RA [deg]
dec_nom	-7.397247367408	Nominal Dec [deg]
roll_nom	65.935244410641	Nominal Roll [deg]
revision	2	Processing version of data
ontime	9177.5999658704	Sum of GTIs [s]
livetime	9061.3876690153	Livetime [s]
ontime2	9177.5999658704	Sum of GTIs [s]
ontime3	9177.5999658704	Sum of GTIs [s]
ontime5	9177.5999658704	Sum of GTIs [s]
ontime6	9177.5999658704	Sum of GTIs [s]
ontime7	9177.5999658704	Sum of GTIs [s]
ontime8	9177.5999658704	Sum of GTIs [s]
l2events	15303	Number of level 2 events



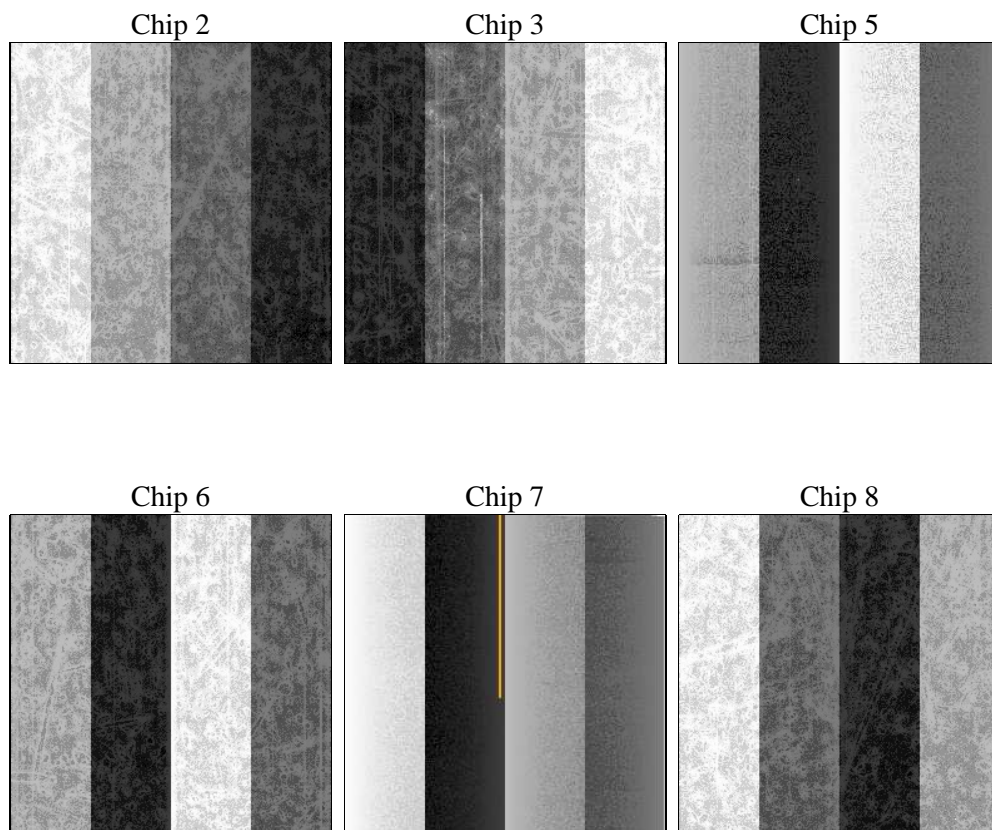
2 OBI

2.1 OBI

2.1.1 Images



2.1.2 Bias



2.1.3 Parameters

obi_num	0	Obi number	sched_exp_time	9000.000000	[s] Scheduled observation exposure time
ascdsver	8.4.5	Processing system revision	ontime	9177.5999658704	Sum of GTIs [s]
caldsver	4.5.0	 	ontime2	9177.5999658704	Sum of GTIs [s]
date	2012-07-07T03:04:01	Date and time of file creation	ontime3	9177.5999658704	Sum of GTIs [s]
revision	2	Processing version of data	ontime5	9177.5999658704	Sum of GTIs [s]
			ontime6	9177.5999658704	Sum of GTIs [s]
			ontime7	9177.5999658704	Sum of GTIs [s]
			ontime8	9177.5999658704	Sum of GTIs [s]
			l1events	188388	Number of level 1 events

2.1.4 Events

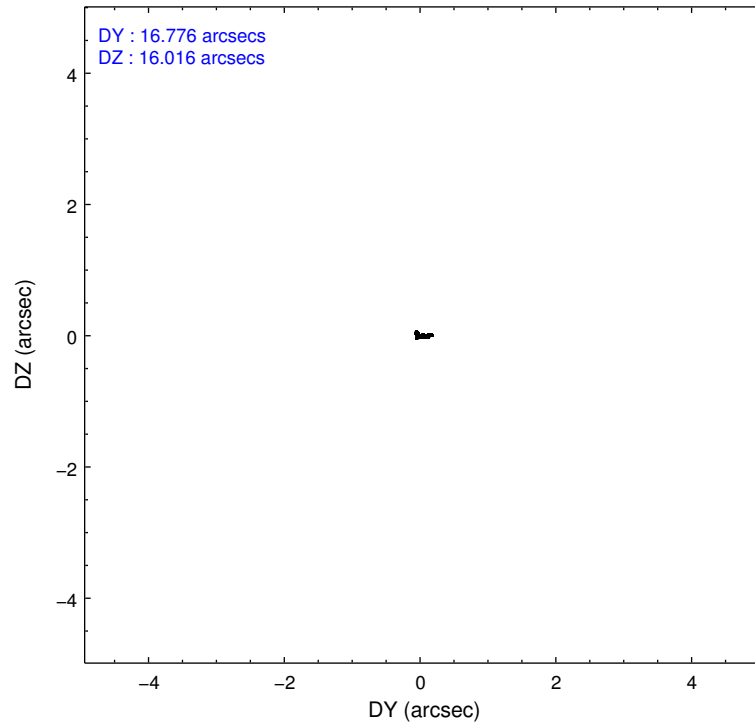
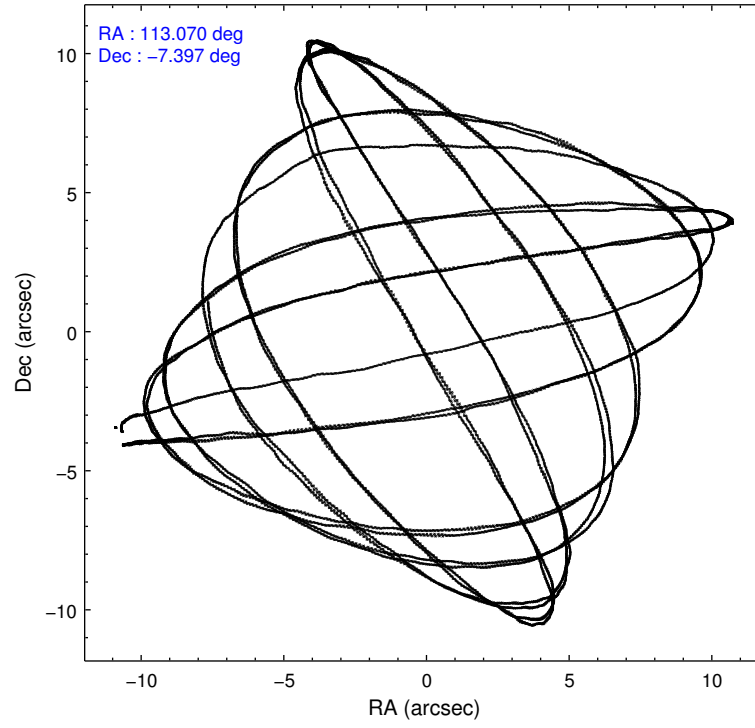
	ccd 2	ccd 3	ccd 5	ccd 6	ccd 7	ccd 8
level 1 events	44159	38939	9432	40254	7303	48301
rejected events	41956	37445	3503	38478	1987	33493
rejected %	95%	96%	37%	95%	27%	69%

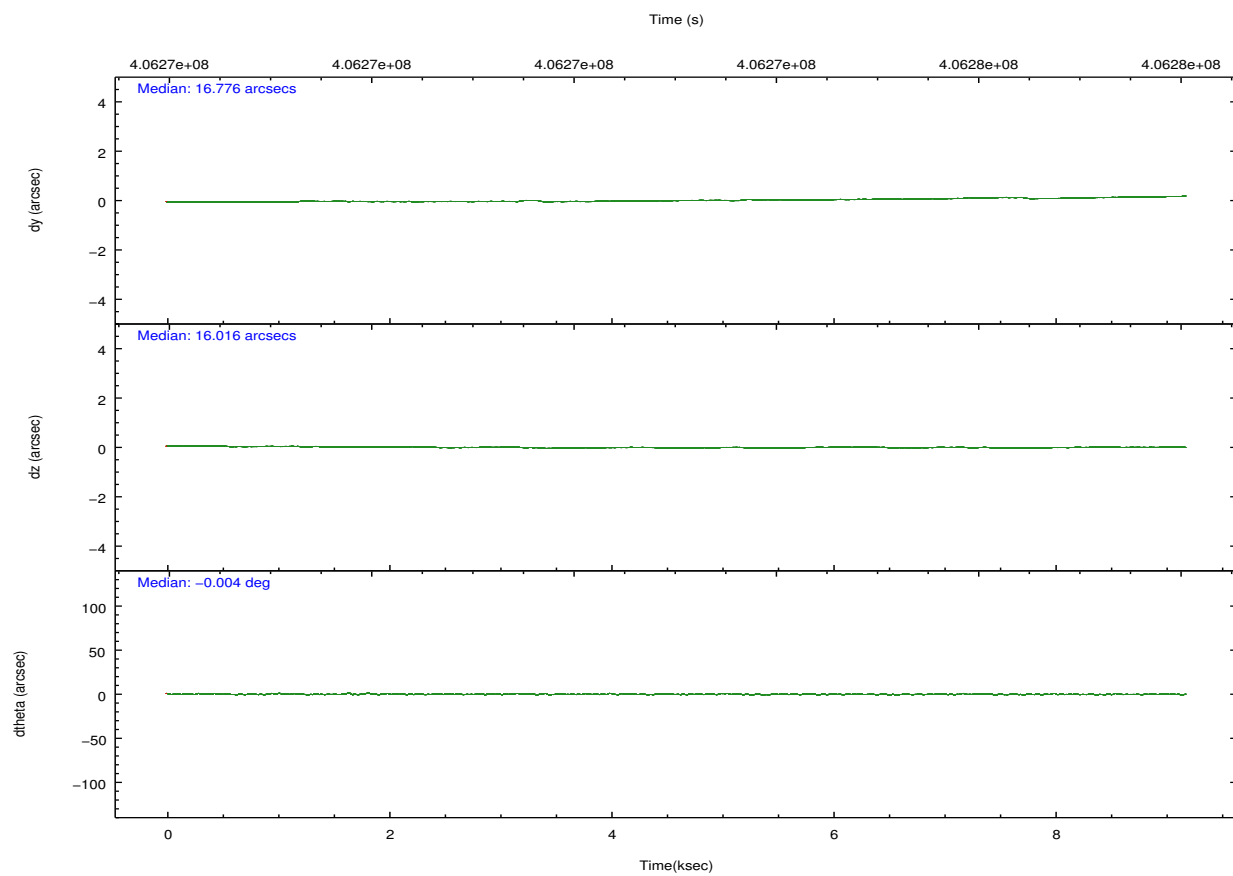
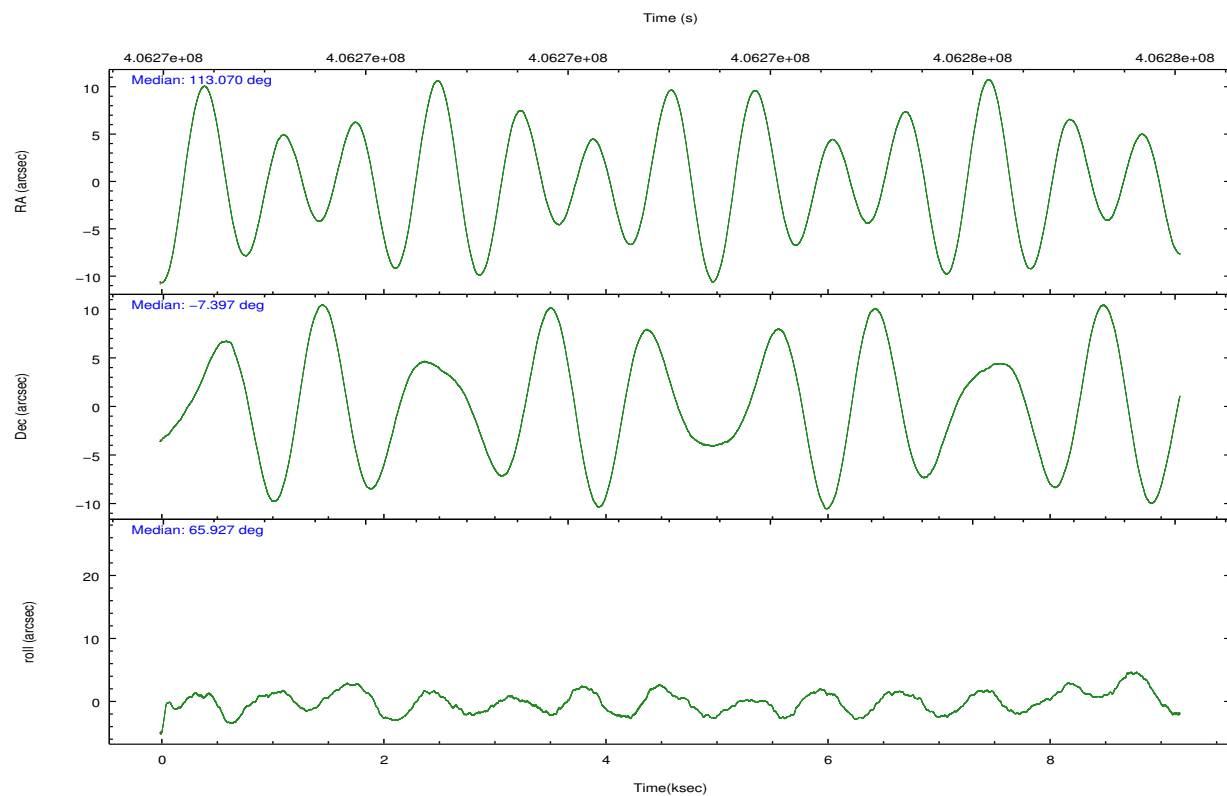
	ccd 2	ccd 3	ccd 5	ccd 6	ccd 7	ccd 8
grade 0 events	904	720	1710	821	1731	4270
	2%	1%	18%	2%	23%	8%
grade 1 events	19	11	141	14	69	52
	0%	0%	1%	0%	0%	0%
grade 2 events	580	229	2349	386	1761	3617
	1%	0%	24%	0%	24%	7%
grade 3 events	256	228	647	246	637	1700
	0%	0%	6%	0%	8%	3%
grade 4 events	251	222	620	240	652	1571
	0%	0%	6%	0%	8%	3%
grade 5 events	64	64	626	36	253	293
	0%	0%	6%	0%	3%	0%
grade 6 events	246	128	742	116	645	3903
	0%	0%	7%	0%	8%	8%
grade 7 events	41839	37337	2597	38395	1555	32895
	94%	95%	27%	95%	21%	68%

2.2 Compared Parameters

Parameter	Planned	Actual	Parameter	Planned	Actual
Instrument	ACIS	ACIS	Obspar format version number	7	7
Detector	ACIS-235678	ACIS-235678	Obspar file type	PREDICTED	ACTUAL
Grating	NONE	NONE	Obspar update status	NONE	UPDATED
Data mode	VFAINT	VFAINT	Number of optional ACIS chips dropped	0	0
Observation mode	POINTING	POINTING	On-chip summing requested	N	N
[deg] Pointing RA	113.072772	113.069524268561	Subarray requested	NONE	NONE
[deg] Pointing Dec	-7.424369	-7.397247367407957	Alternating exposures requested	N	N
[deg] Pointing Roll	65.779031	65.93524441064082	[s] Primary exposure time	0.000000	3.2
[s] Window start time (MET)	406166466.184000	406166466.184000			
[s] Window stop time (MET)	406512006.184000	406512006.184000			
[mm] SIM focus pos	-0.684267	-0.6828225247311905			
[mm] SIM defocus	0	0.001444936568705701			
[mm] SIM translation stage pos	-190.132523	-190.1400660498719			
[mm] SIM translation stage offset	0	0.00754346686406393			
[s] Observation start time (MET)	406268585.184000	406268209.58089			
Observation start date	2010-11-16T04:21:59	2010-11-16T04:16:49			
[s] Observation end time (MET)	406277585.184000	406278235.6189			
Observation end date	2010-11-16T06:51:59	2010-11-16T07:03:55			
Read mode	TIMED	TIMED			

2.3 Aspect



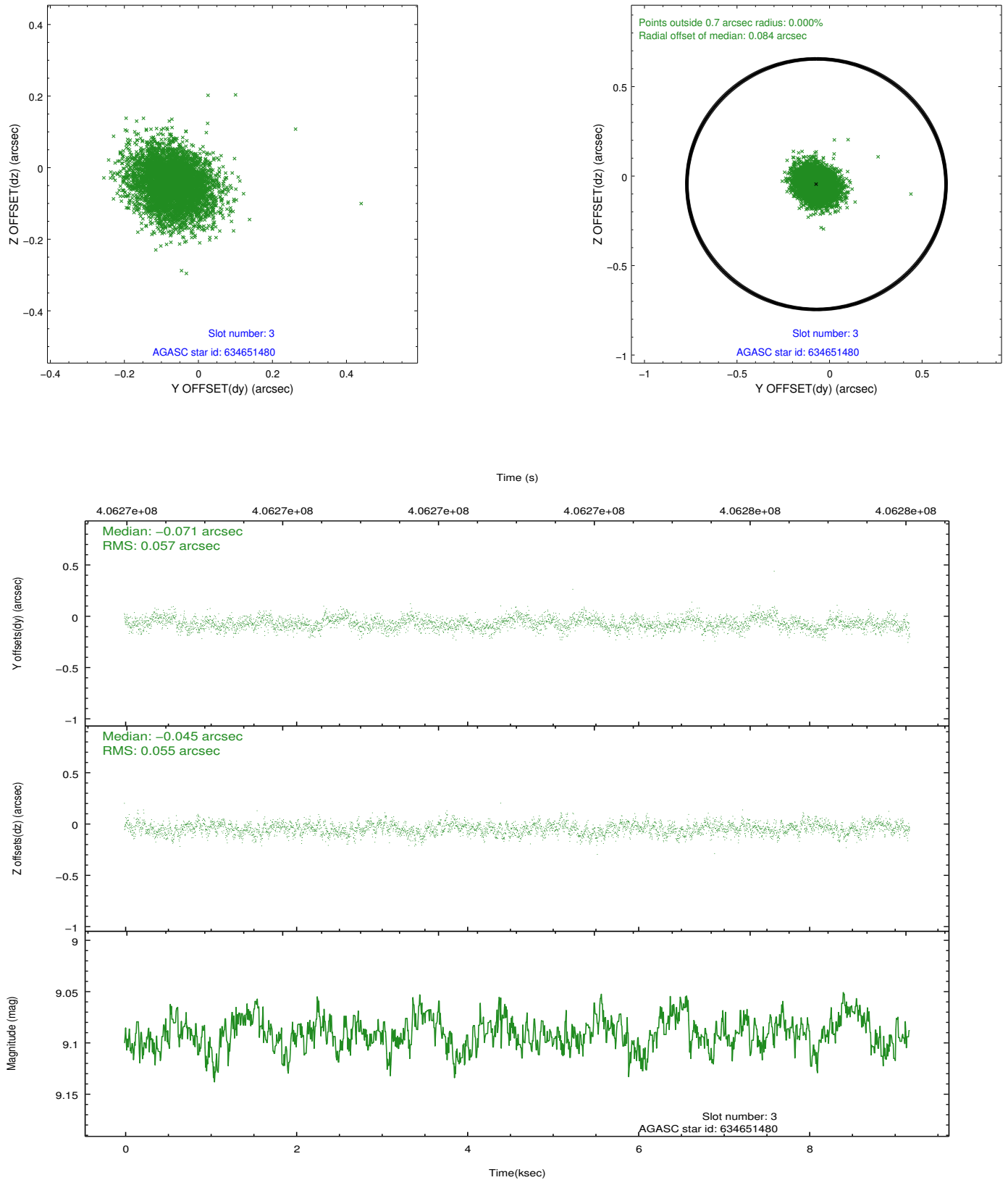


Slot Statistics

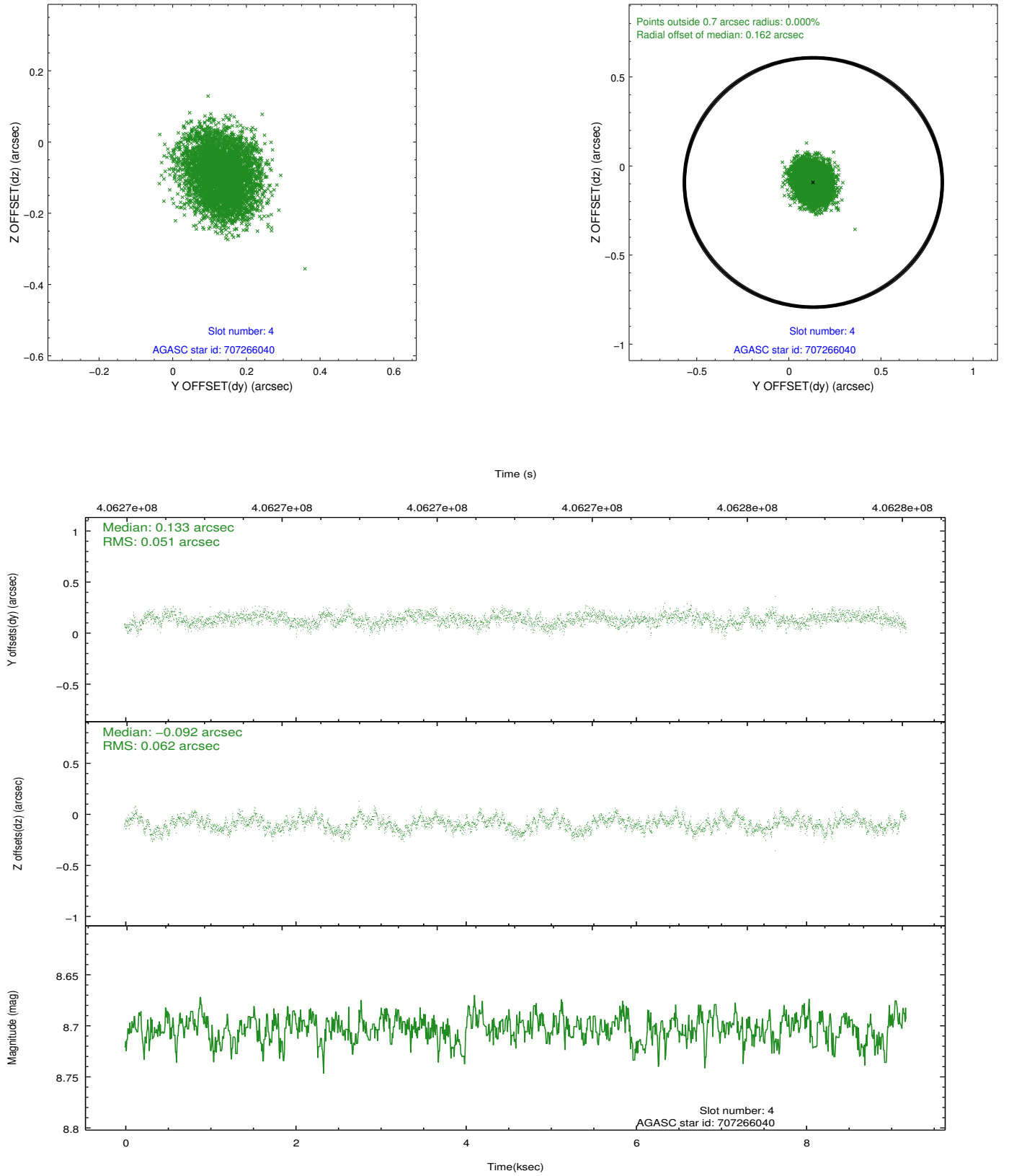
slot	status	id	mag	n_pts	med_dy	med_dz	dr1	dr2	ra	dec	mean_y	mean_z
0	FID	ACIS-S-2	6.94	2241	-0.087	-0.010	0.007	0.011	0.000000	0.000000	-769.90	-1737.44
1	FID	ACIS-S-4	7.02	2241	0.181	0.045	0.006	0.010	0.000000	0.000000	2143.37	170.49
2	FID	ACIS-S-5	7.06	2241	-0.125	-0.026	0.007	0.012	0.000000	0.000000	-1822.02	164.76
3	GUIDE	634651480	9.09	4479	-0.071	-0.045	0.083	0.135	113.193054	-7.234072	801.26	-110.40
4	GUIDE	707266040	8.70	4469	0.133	-0.092	0.087	0.136	112.718943	-7.812308	-1791.26	577.63
5	GUIDE	707266752	8.21	4481	0.018	-0.059	0.072	0.114	112.811260	-7.760056	-1485.11	354.93
6	GUIDE	634666936	9.78	4470	-0.183	0.285	0.148	0.291	113.654440	-7.411850	891.88	-1875.04
7	GUIDE	707271248	9.40	4476	0.105	-0.094	0.119	0.192	112.269069	-7.701256	-2087.46	2204.35

2.4 Star Slots

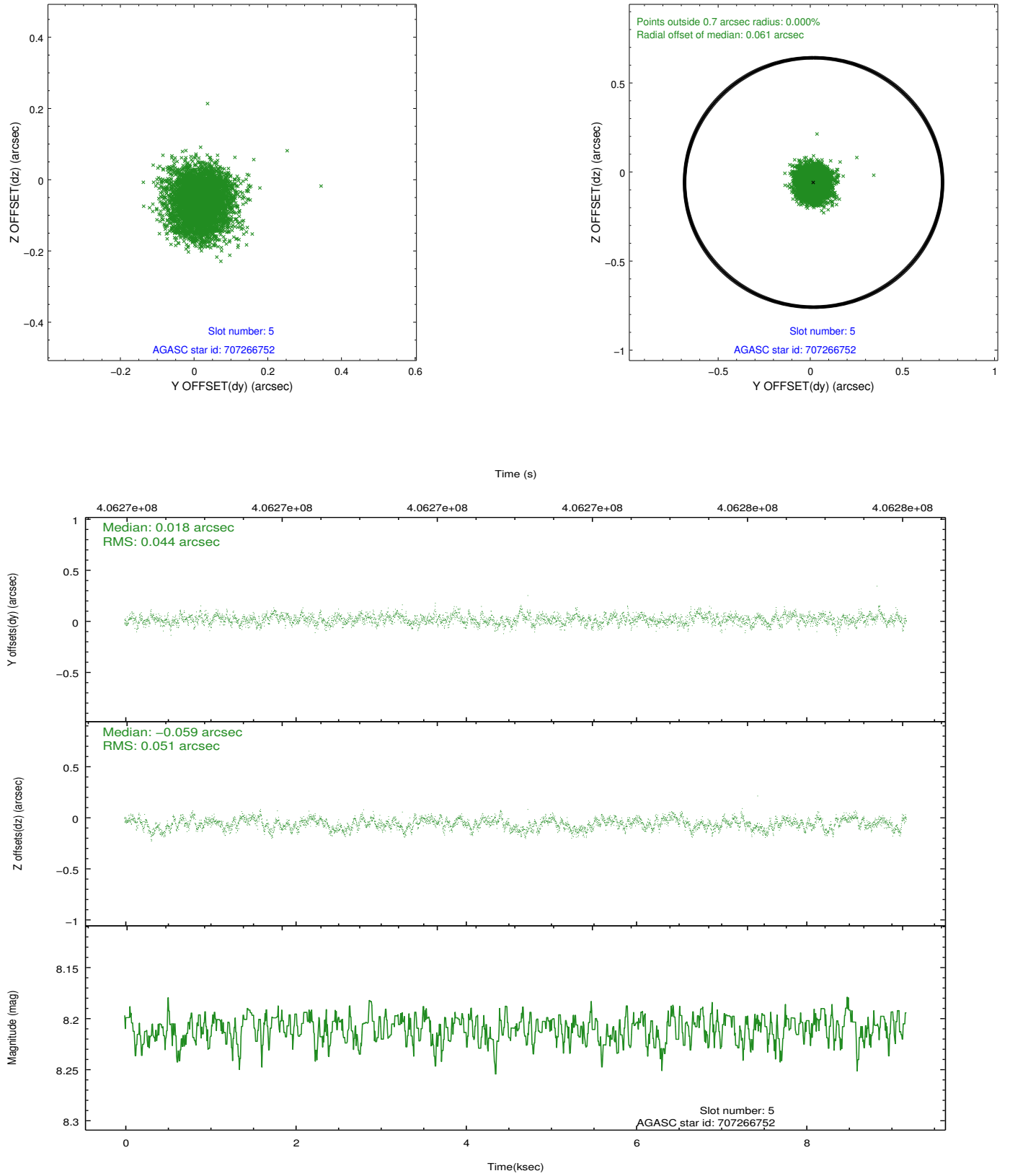
2.4.1 Slot 3



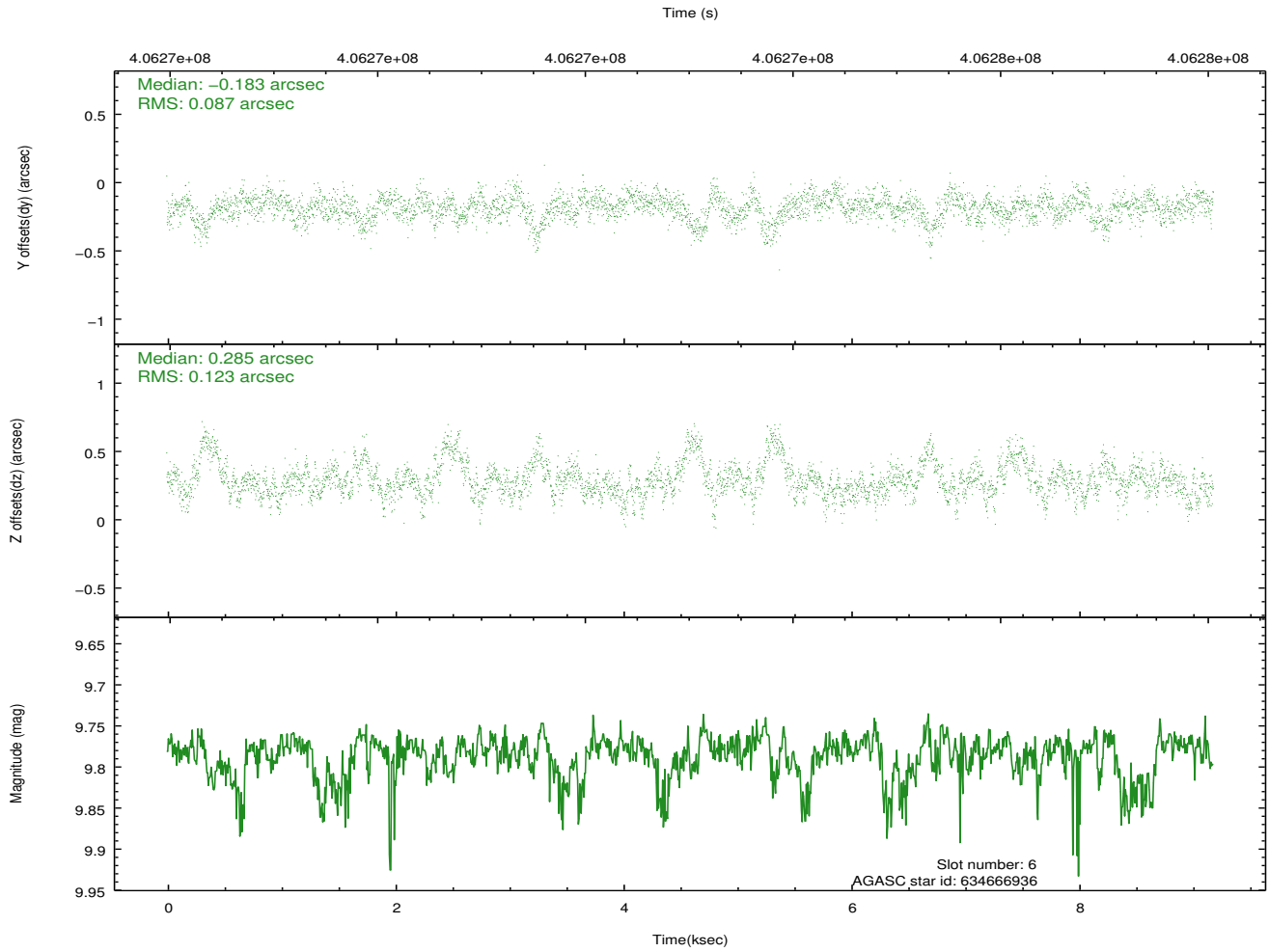
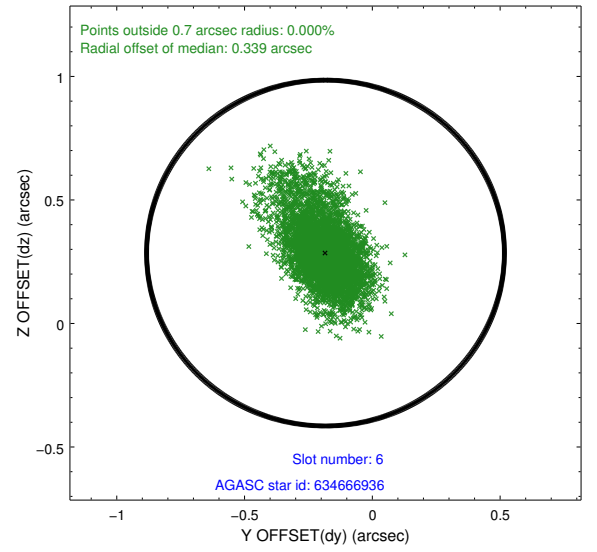
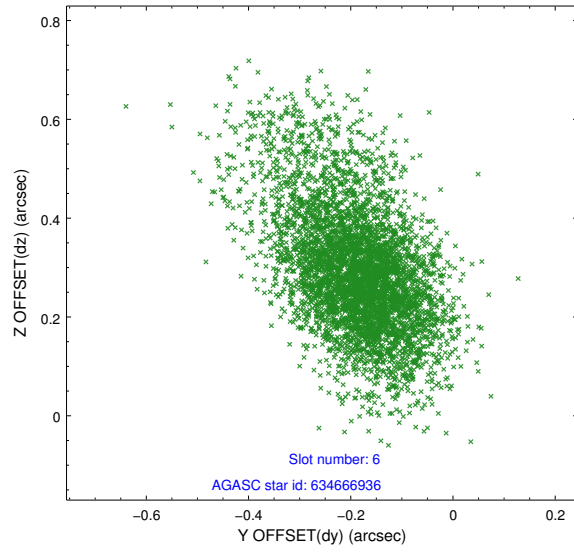
2.4.2 Slot 4



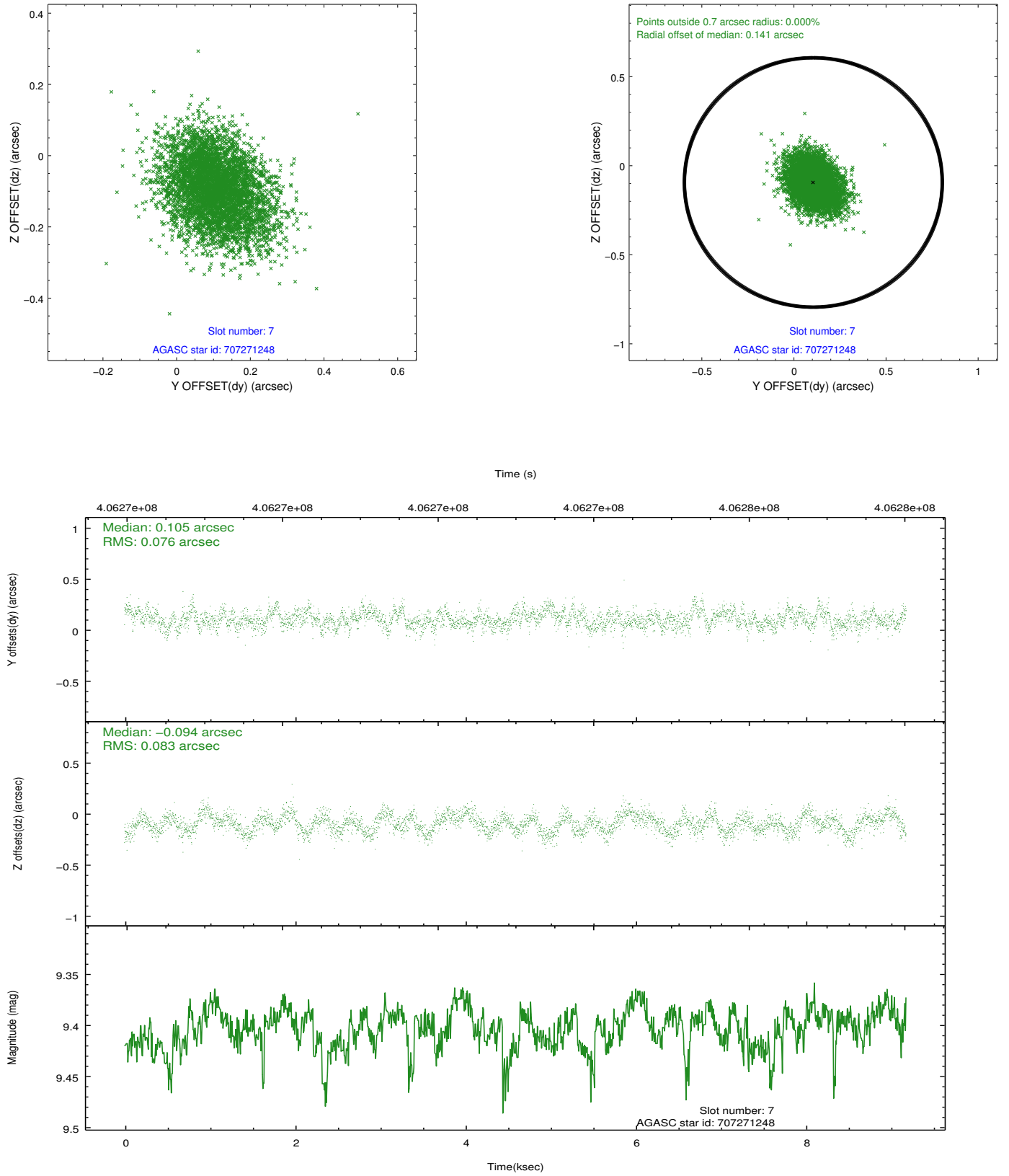
2.4.3 Slot 5



2.4.4 Slot 6

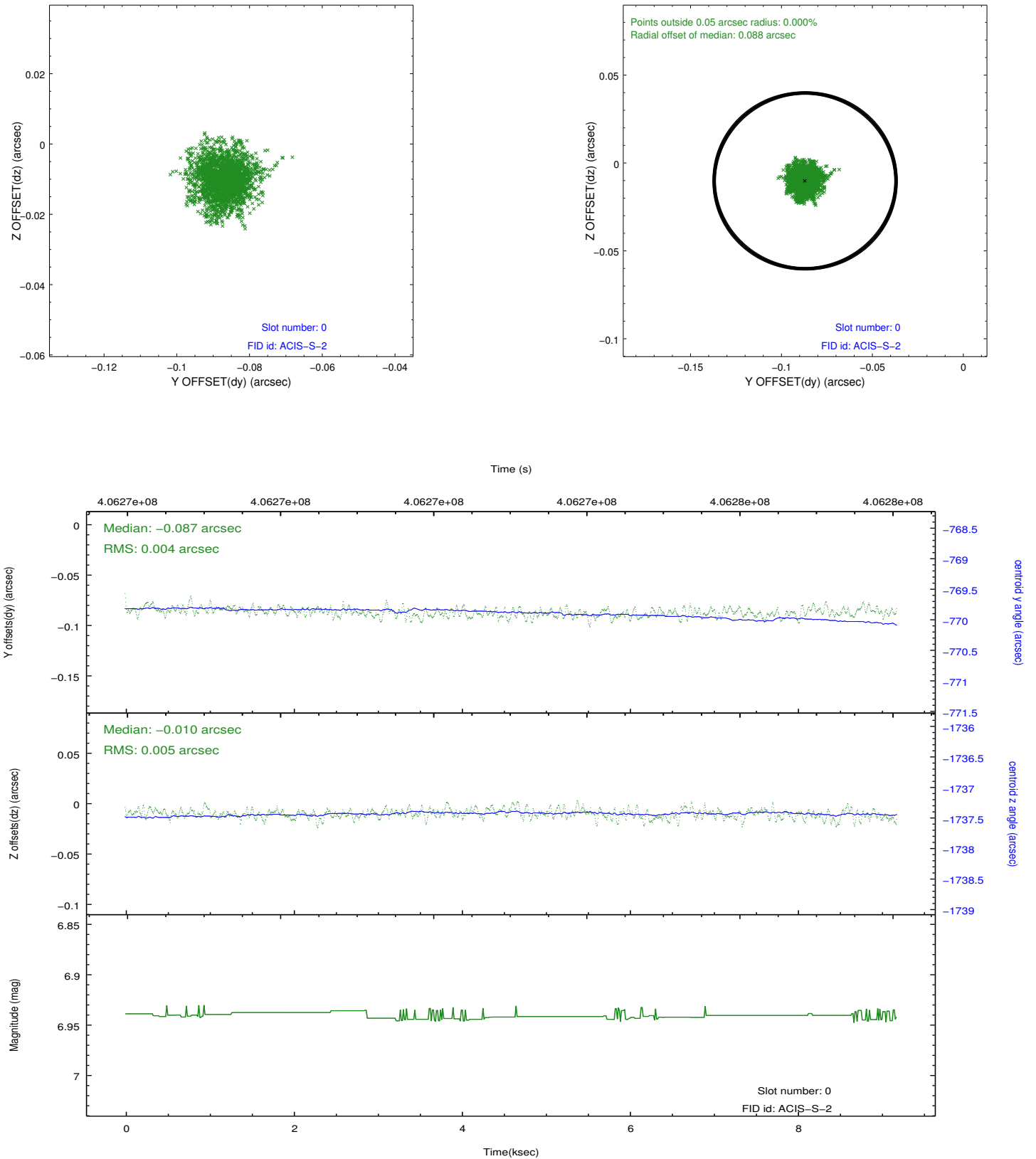


2.4.5 Slot 7

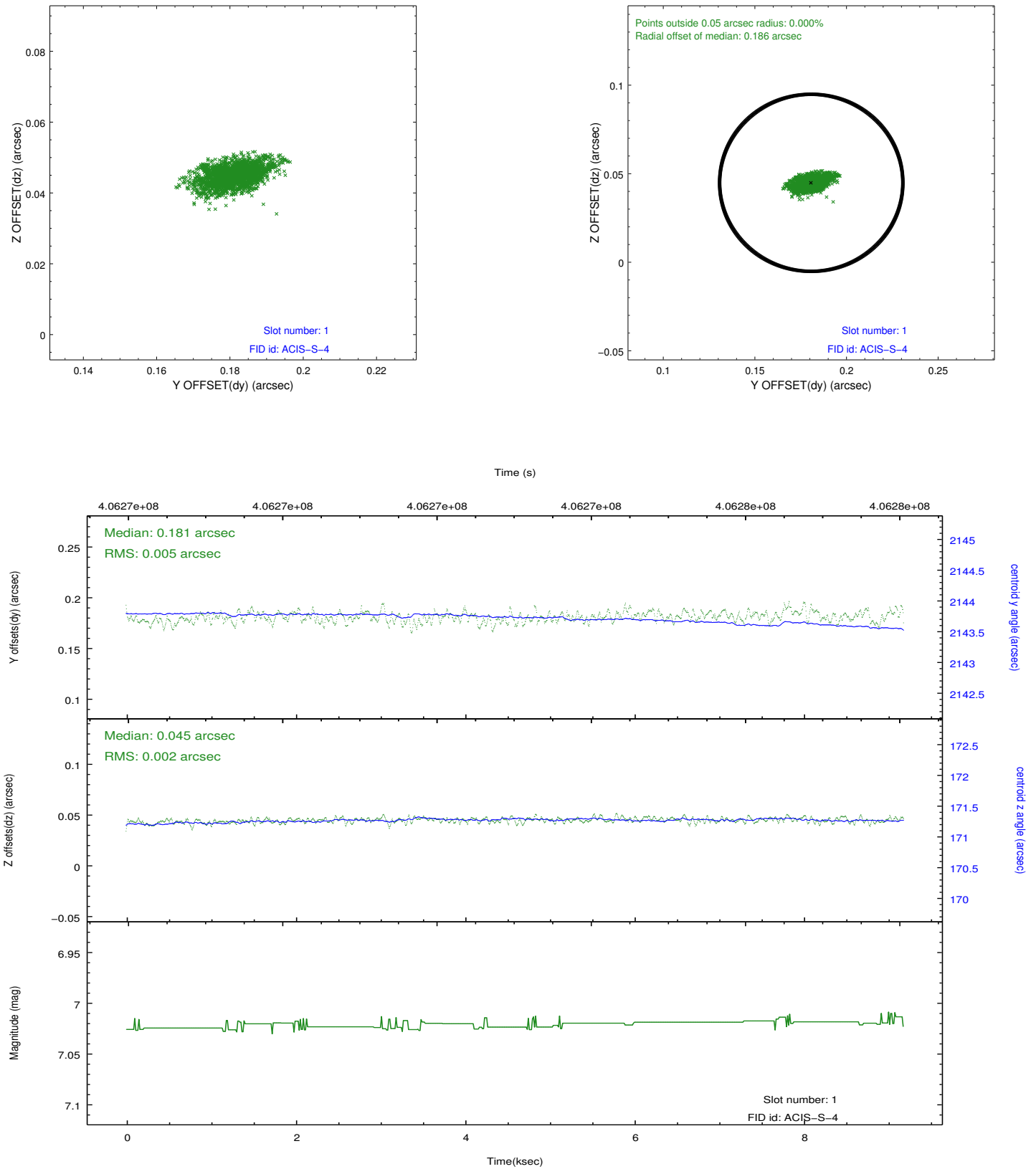


2.5 FID Slots

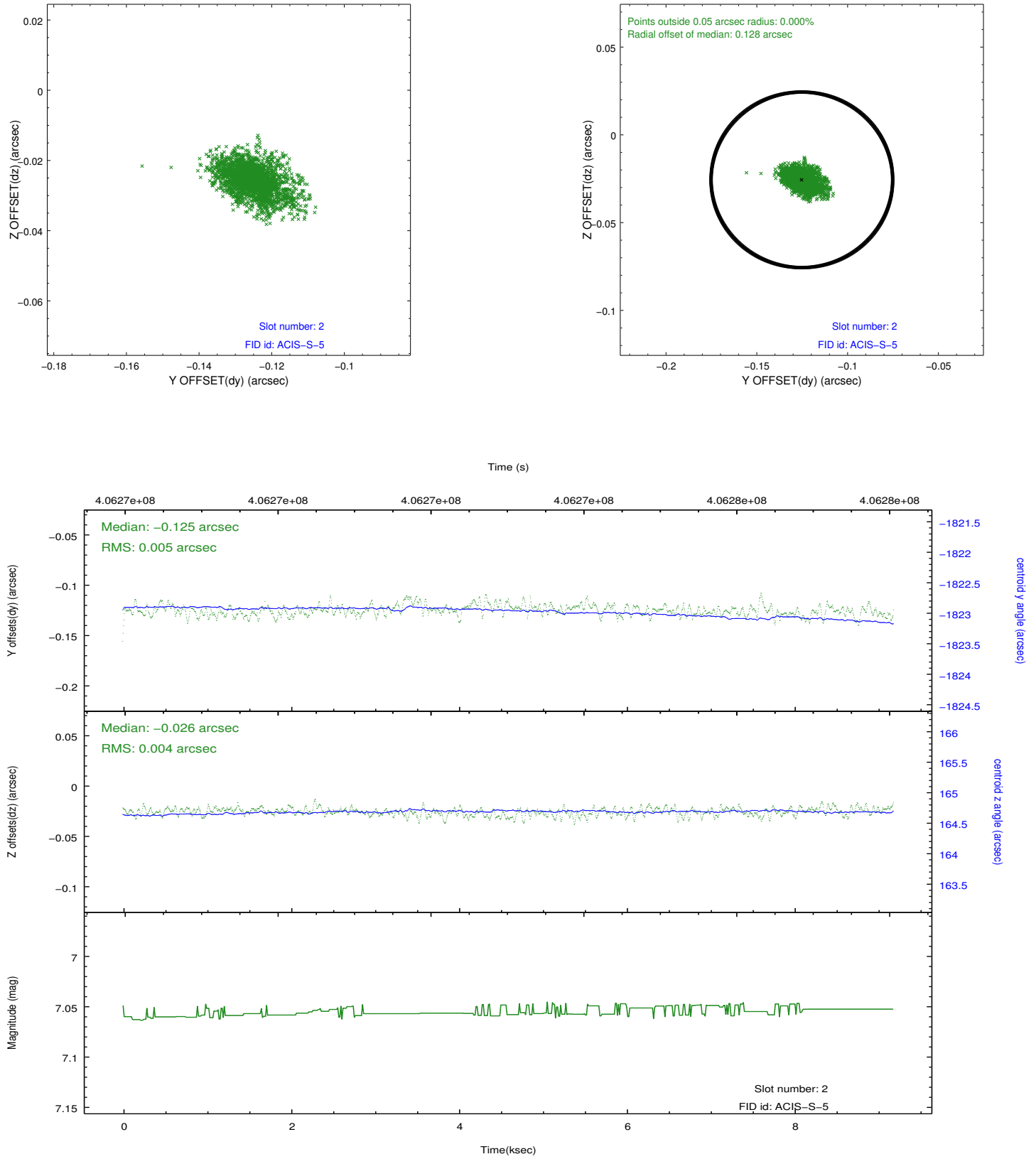
2.5.1 Slot 0



2.5.2 Slot 1



2.5.3 Slot 2



A Summary

A.1 Status

V&V Scientist	Jen Lauer
V&V Date (YYYY-MM-DD)	2012.07.16
V&V Edition	1
V&V Disposition and Status	OK
V&V Charge Time	9.1775999658704

A.2 Comments

The comet is a moving object with respect to the satellite. Users will need to run sso_freeze or similar software to reposition the events in the reference frame of the comet.

=====

Window constraint met.