

V&V Reference Report

L2 ASCDS Version : 8.2.1

Observation 1299 - L2 Version 4

Chandra X-Ray Center

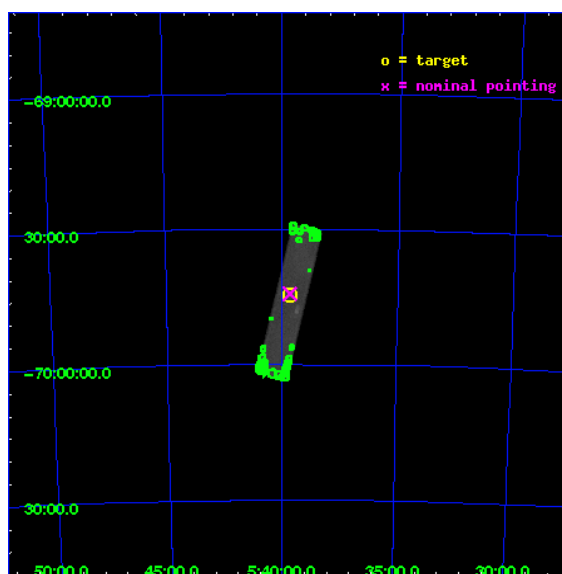
L2 Processing Date : Jan 12 2010

Contents

1	Front	2
2	OBI	3
2.1	OBI	3
2.1.1	Images	3
2.1.2	Parameters	4
2.1.3	Events	4
2.2	Compared Parameters	5
2.3	Aspect	6
2.4	Star Slots	9
2.4.1	Slot 3	9
2.4.2	Slot 4	10
2.4.3	Slot 5	11
2.4.4	Slot 6	12
2.4.5	Slot 7	13
2.5	FID Slots	14
2.5.1	Slot 0	14
2.5.2	Slot 1	15
2.5.3	Slot 2	16
3	Point Sources	17
A	Summary	18
A.1	Status	18
A.2	Comments	18

1 Front

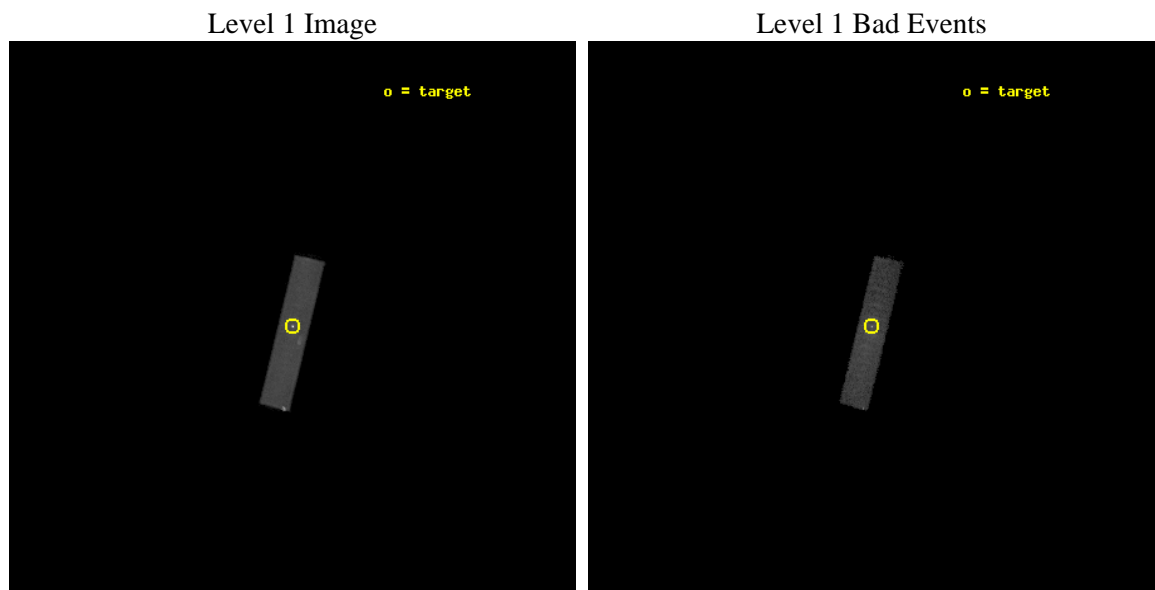
seq_num	480249	Sequence number
obs_id	1299	Observation id
title	 	Proposal title
observer	Dr. CXC Calibration	Principal investigator
object	LMC X-1	Source name
ra_targ	84.914583	Observer's specified target RA
dec_targ	-69.743611	Observer's specified target Dec
ra_nom	84.913477701864	Nominal RA
dec_nom	-69.73810079189	Nominal Dec
roll_nom	103.53083007983	Nominal Roll
revision	4	Processing version of data
ontime	2515.35009031	[s]
livetime	2481.4469591092	Ontime multiplied by DTCOR
l2events	191340	Number of level 2 events



2 OBI

2.1 OBI

2.1.1 Images



2.1.2 Parameters

obi_num	0	Obi number	sched_exp_time	36000.000000	Scheduled observation exposure time
ascdsver	8.2.1	Processing system revision	ontime	2515.35009031	[s]
caldbver	4.1.5	 	ll events	249061	Number of level 1 events
date	2010-01-13T02:59:42	Date and time of file creation			
revision	3	Processing version of data			

2.1.3 Events

Level 1 Events

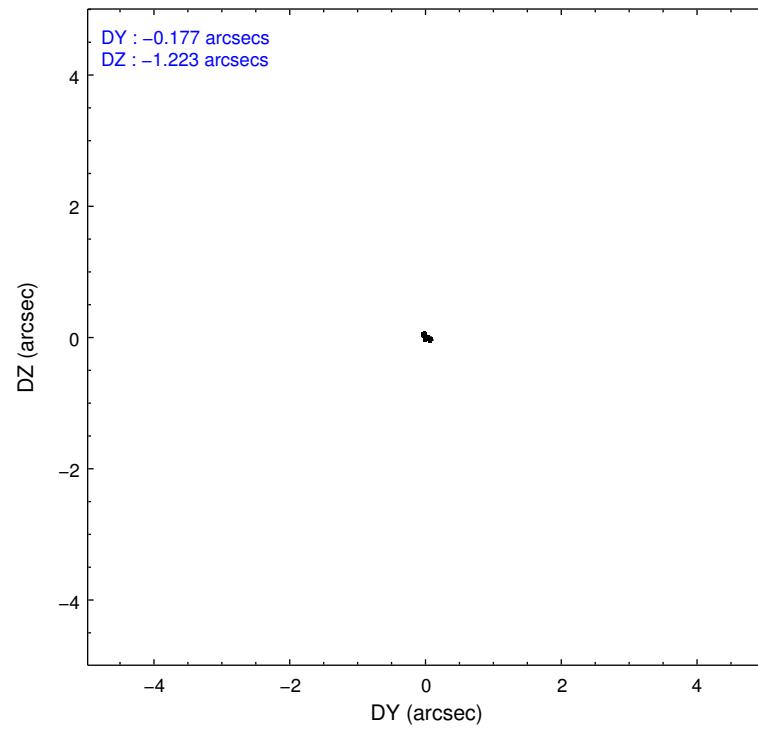
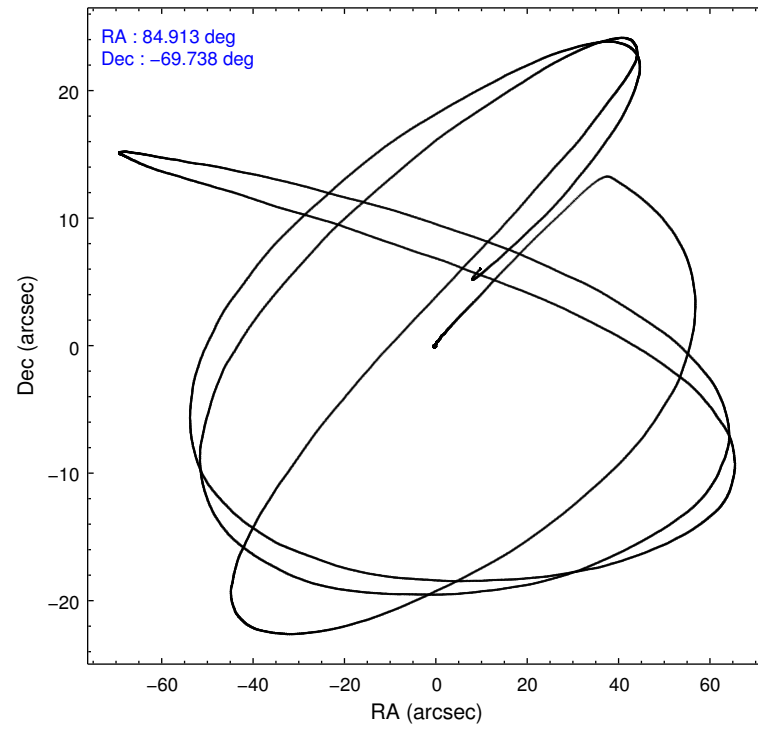
	segment 1	segment 2	segment 3
level 1 events	0	249061	0
rejected events	0	45628	0
rejected %	0%	18%	0%

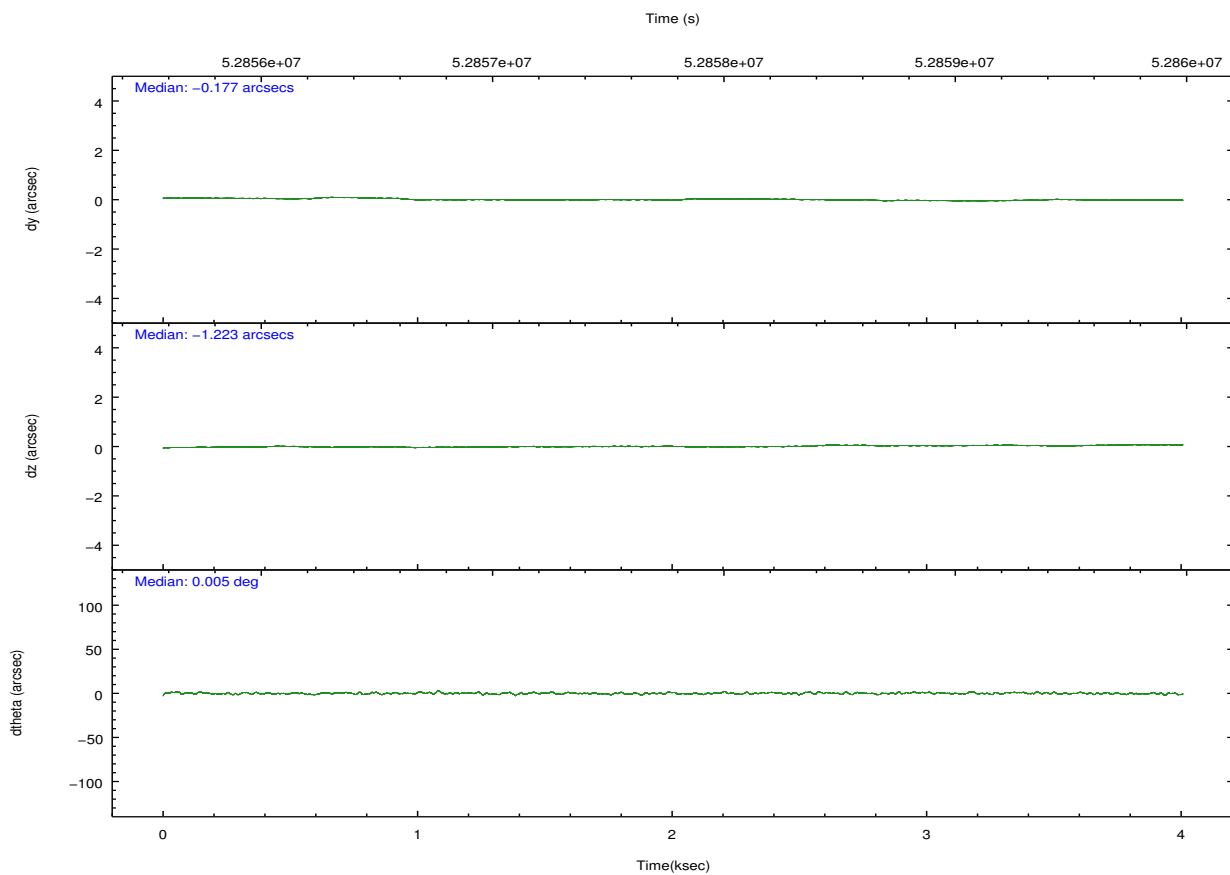
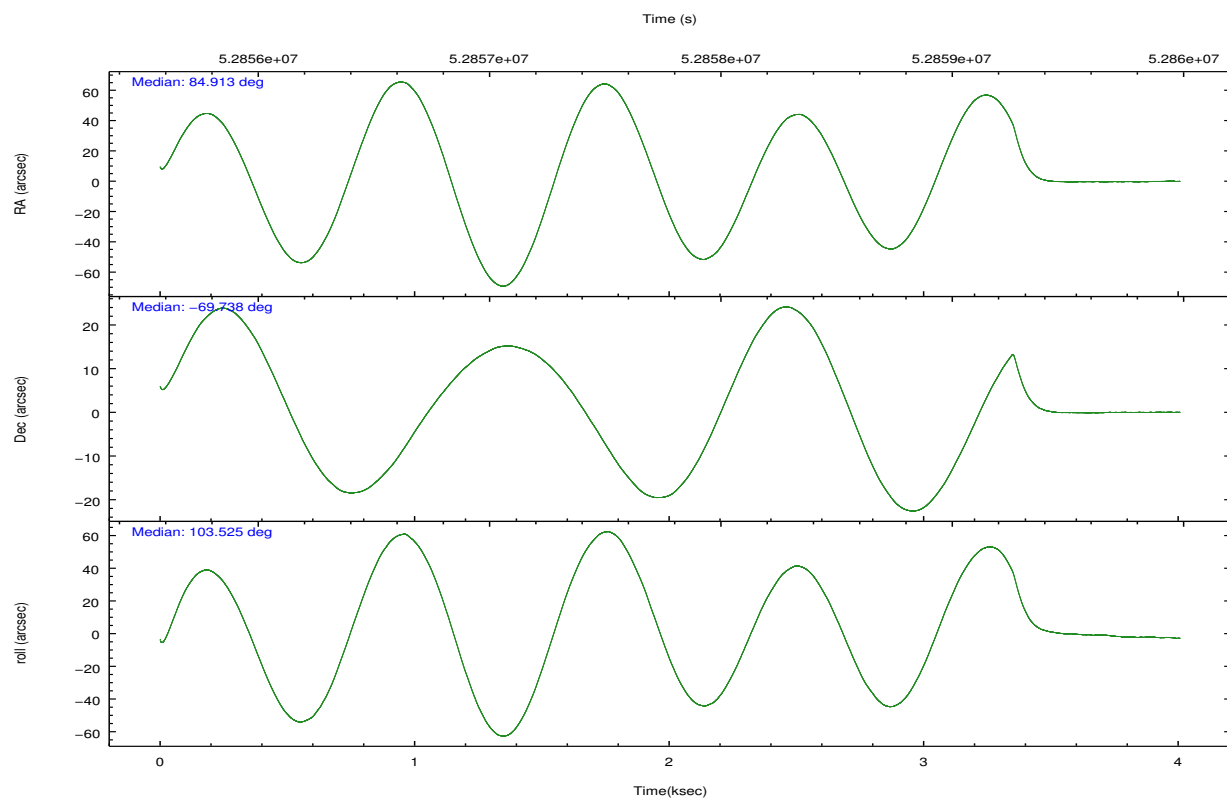
2.2 Compared Parameters

Parameter	Planned	Actual
Instrument	HRC	HRC
Detector	HRC-S	HRC-S
Grating	NONE	NONE
Data mode	OBSERVING	OBSERVING
Observation mode	POINTING	POINTING
Pointing RA	84.971636	84.91347770186377
Pointing Dec	-69.758744	-69.73810079188962
Pointing Roll	103.518059	103.5308300798267
SIM focus pos (mm)	-1.429586	-1.016036269358593
SIM defocus (mm)	0.1037507710433287	0.5173003700457035
SIM translation stage pos (mm)	250.455976	250.466033080201
SIM translation stage offset (mm)	0	-0.01005468664627074
Observation start time	52856164.184000	52854645.323942
Observation start date	1999-09-04T18:15:00	1999-09-04T17:50:45
Observation end time	52892164.184000	52859785.186626
Observation end date	1999-09-05T04:15:00	1999-09-04T19:16:25

Parameter	Planned	Actual
Obspar format version number	6	6
Obspar file type	PREDICTED	ACTUAL
Obspar update status	NONE	UPDATED

2.3 Aspect



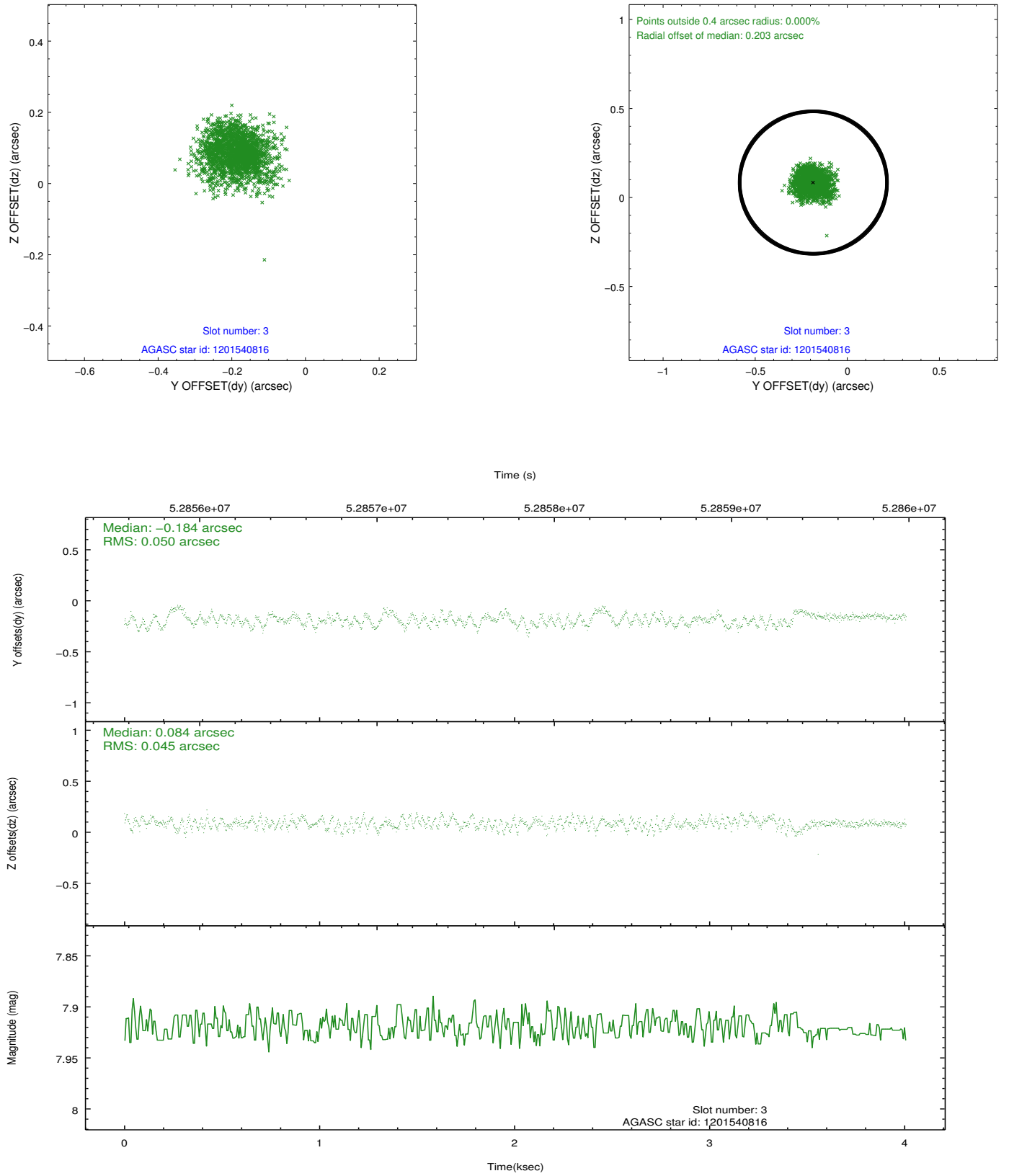


Slot Statistics

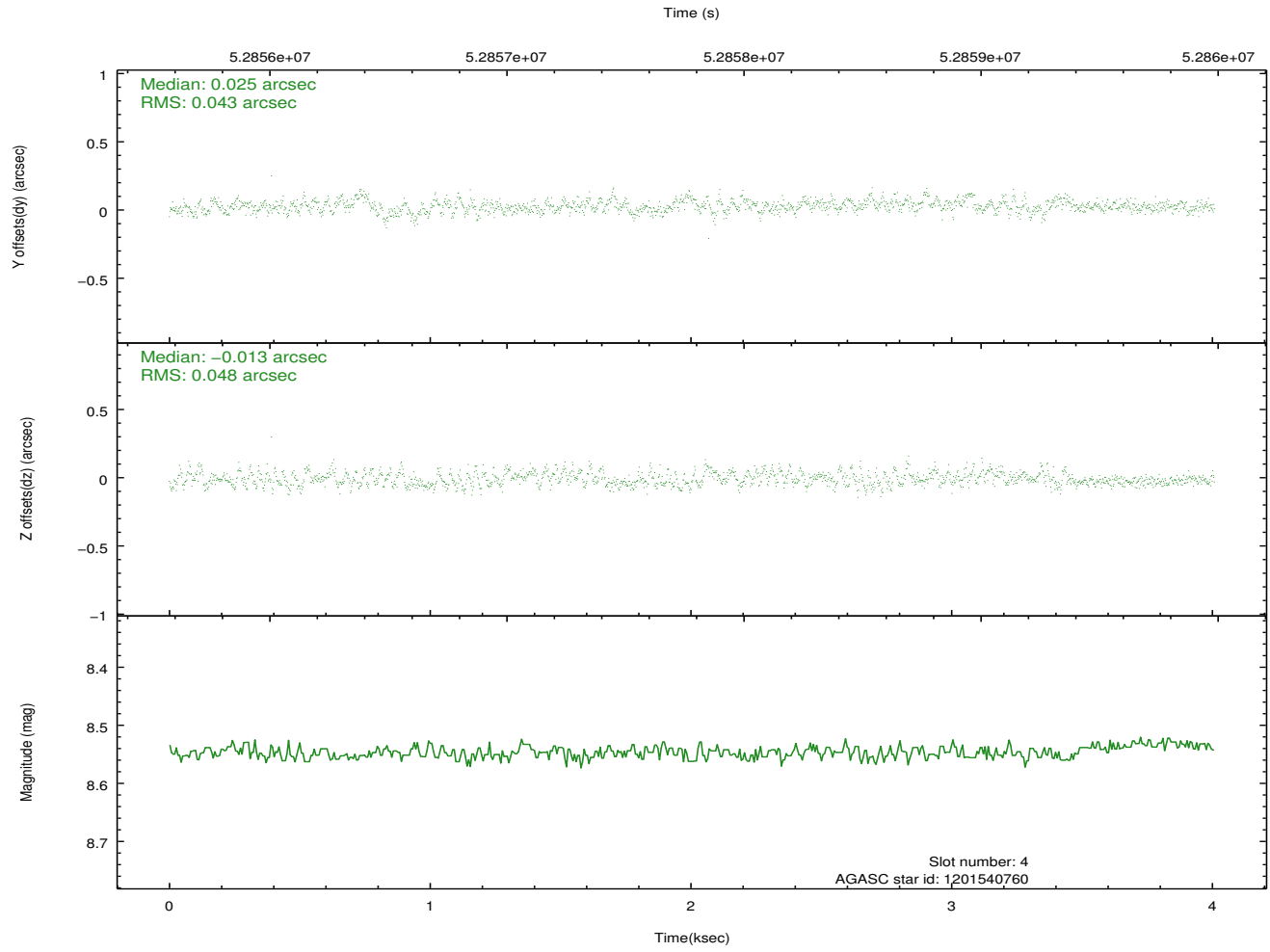
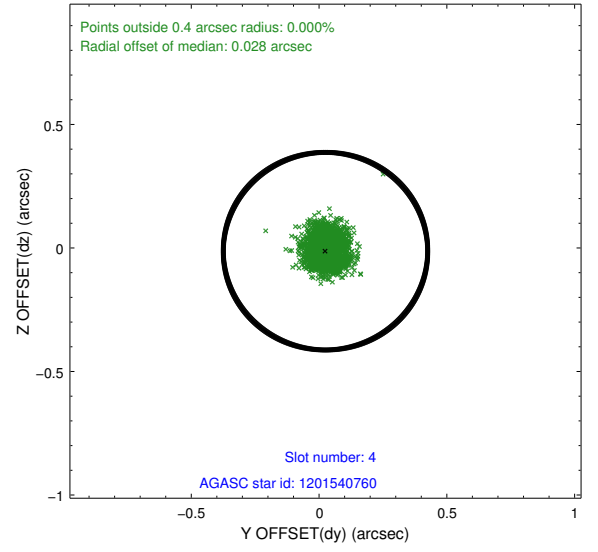
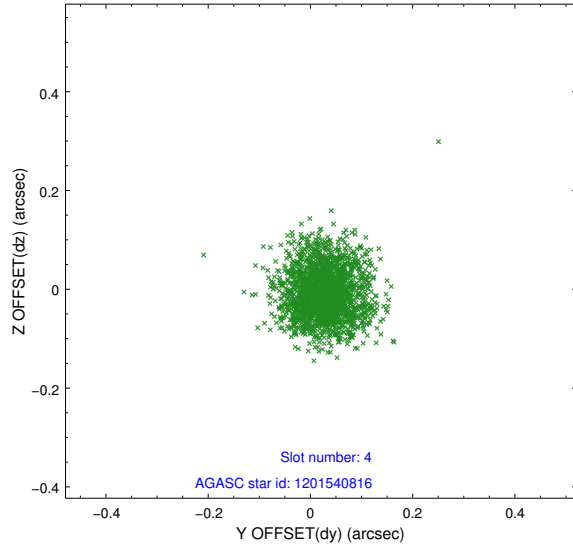
slot	status	id	mag	n_pts	med_dy	med_dz	dr1	dr2	ra	dec	mean_y	mean_z
0	FID	HRC-S-1	6.99	1956	0.143	-0.005	0.006	0.010	0.000000	0.000000	-1153.93	-446.81
1	FID	HRC-S-3	7.00	1956	0.078	-0.185	0.007	0.012	0.000000	0.000000	-1157.15	582.35
2	FID	HRC-S-4	7.00	1956	0.166	-0.106	0.005	0.008	0.000000	0.000000	1244.01	585.16
3	GUIDE	1201540816	7.92	1956	-0.184	0.084	0.071	0.115	86.998494	-69.749817	-600.04	-2450.95
4	GUIDE	1201540760	8.55	1955	0.025	-0.013	0.069	0.113	84.403691	-70.419249	-2155.63	1223.25
5	GUIDE	1201411368	10.06	1955	-0.115	-0.063	0.165	0.275	83.629696	-70.495613	-2221.30	2194.71
6	GUIDE	1200883536	9.90	1953	0.096	0.095	0.129	0.207	83.119228	-69.218429	2407.93	1857.32
7	GUIDE	1201020088	10.49	1953	0.164	-0.111	0.157	0.266	86.319248	-68.997756	2239.99	-2323.58

2.4 Star Slots

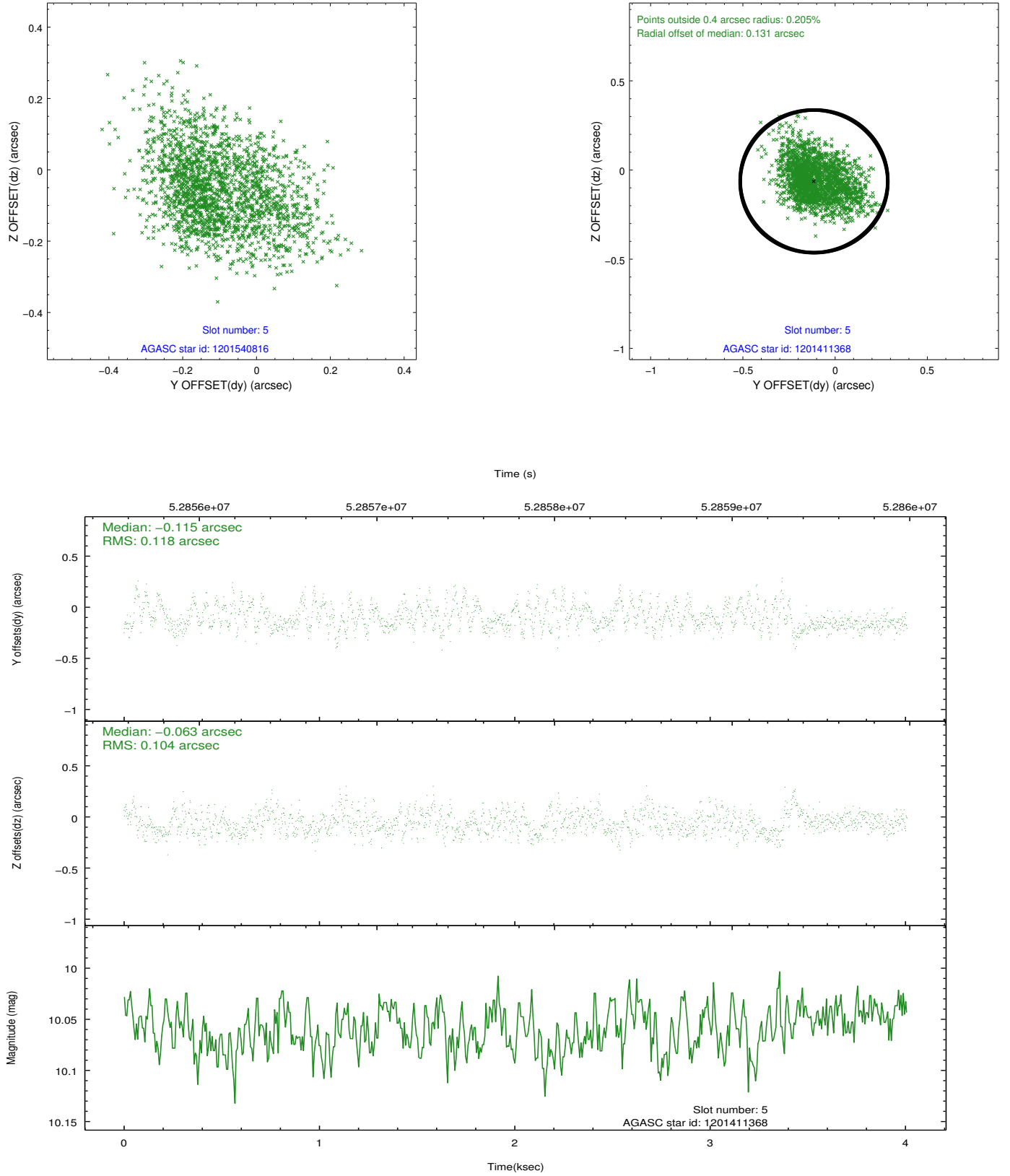
2.4.1 Slot 3



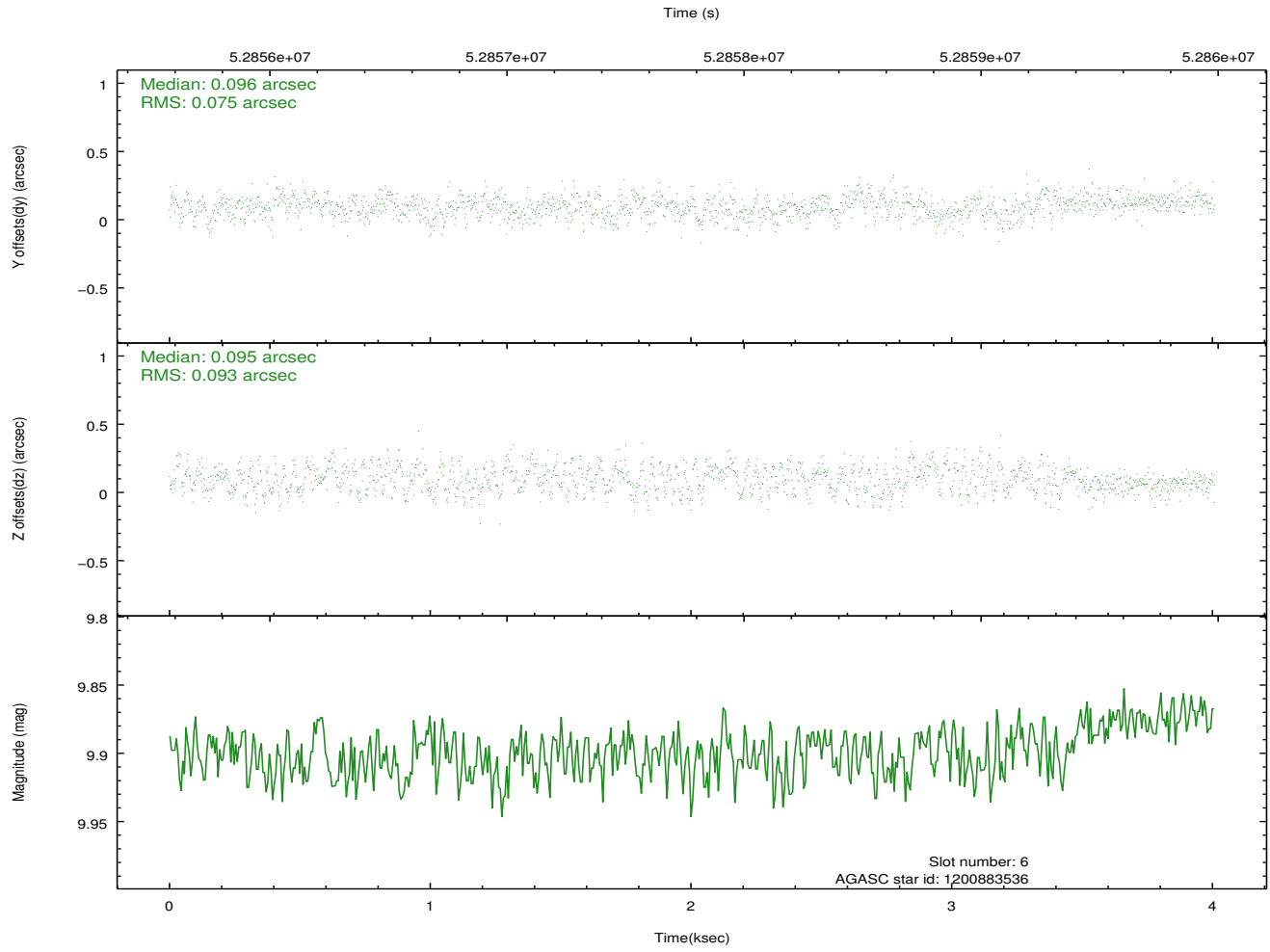
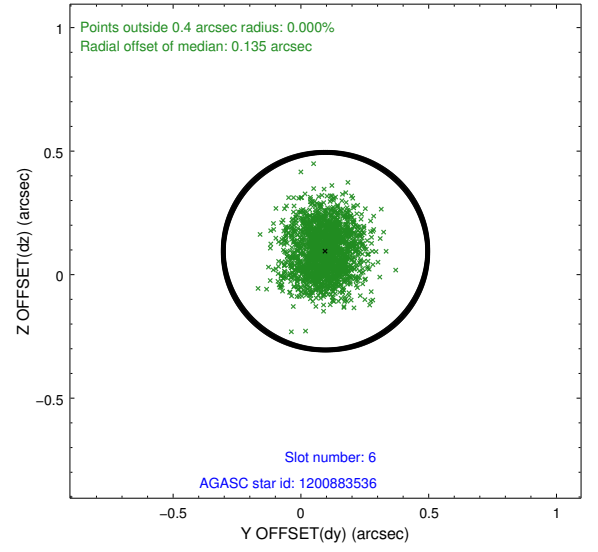
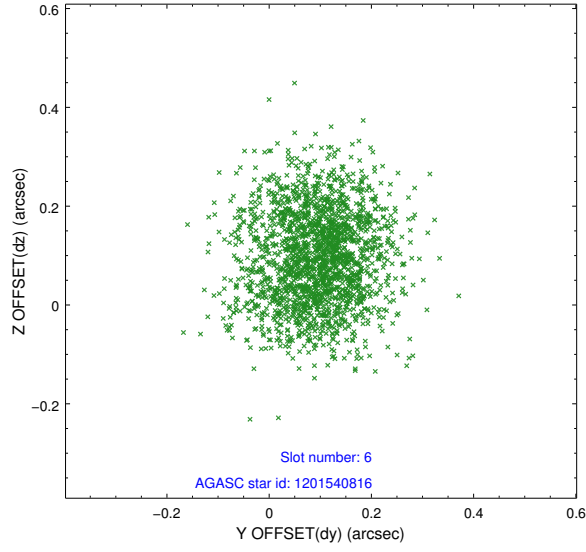
2.4.2 Slot 4



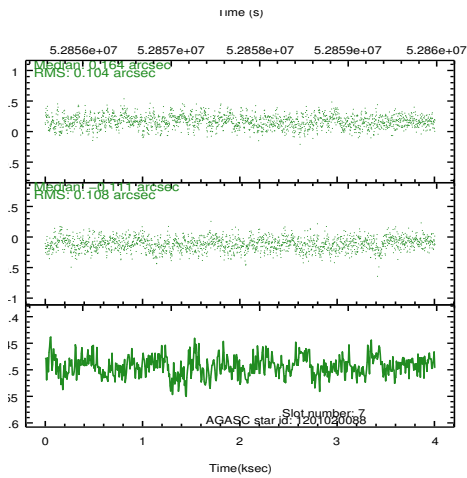
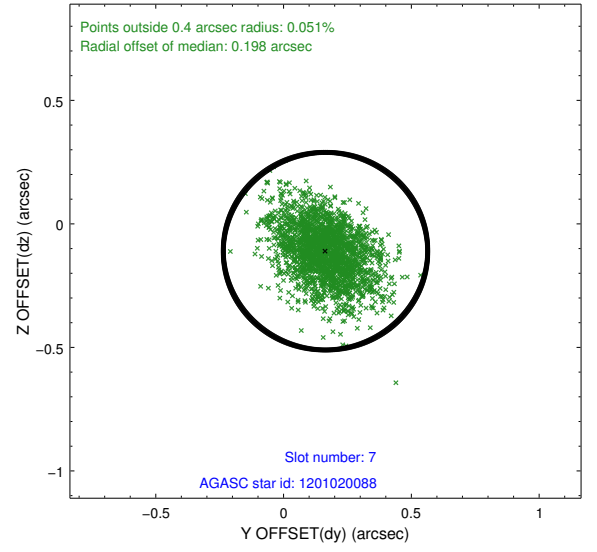
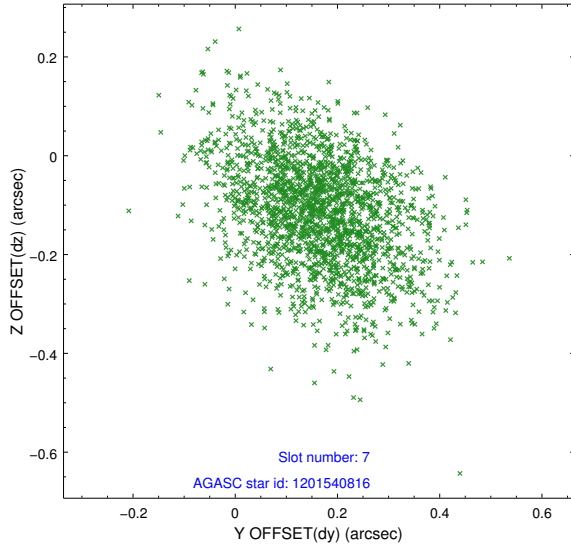
2.4.3 Slot 5



2.4.4 Slot 6

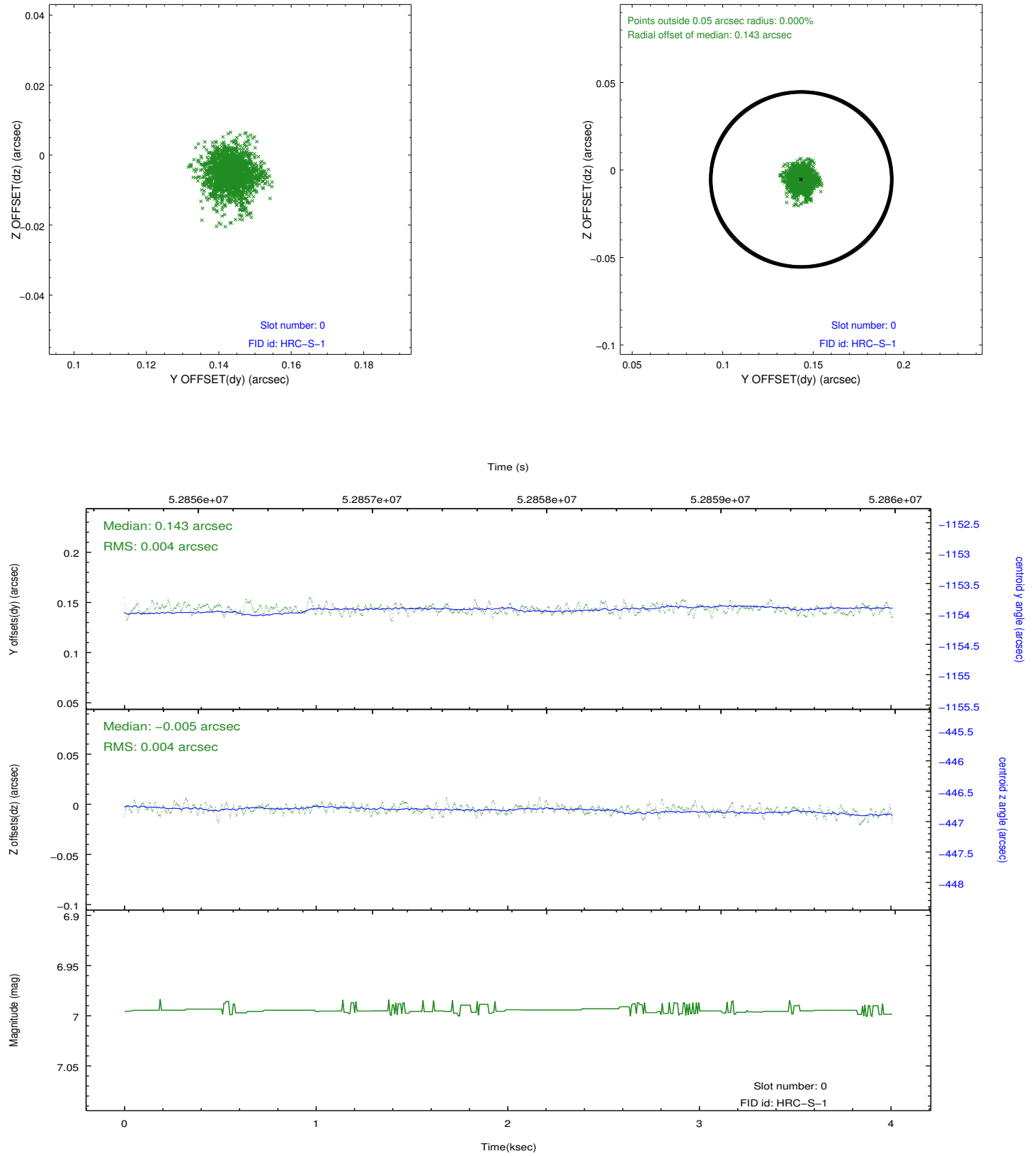


2.4.5 Slot 7

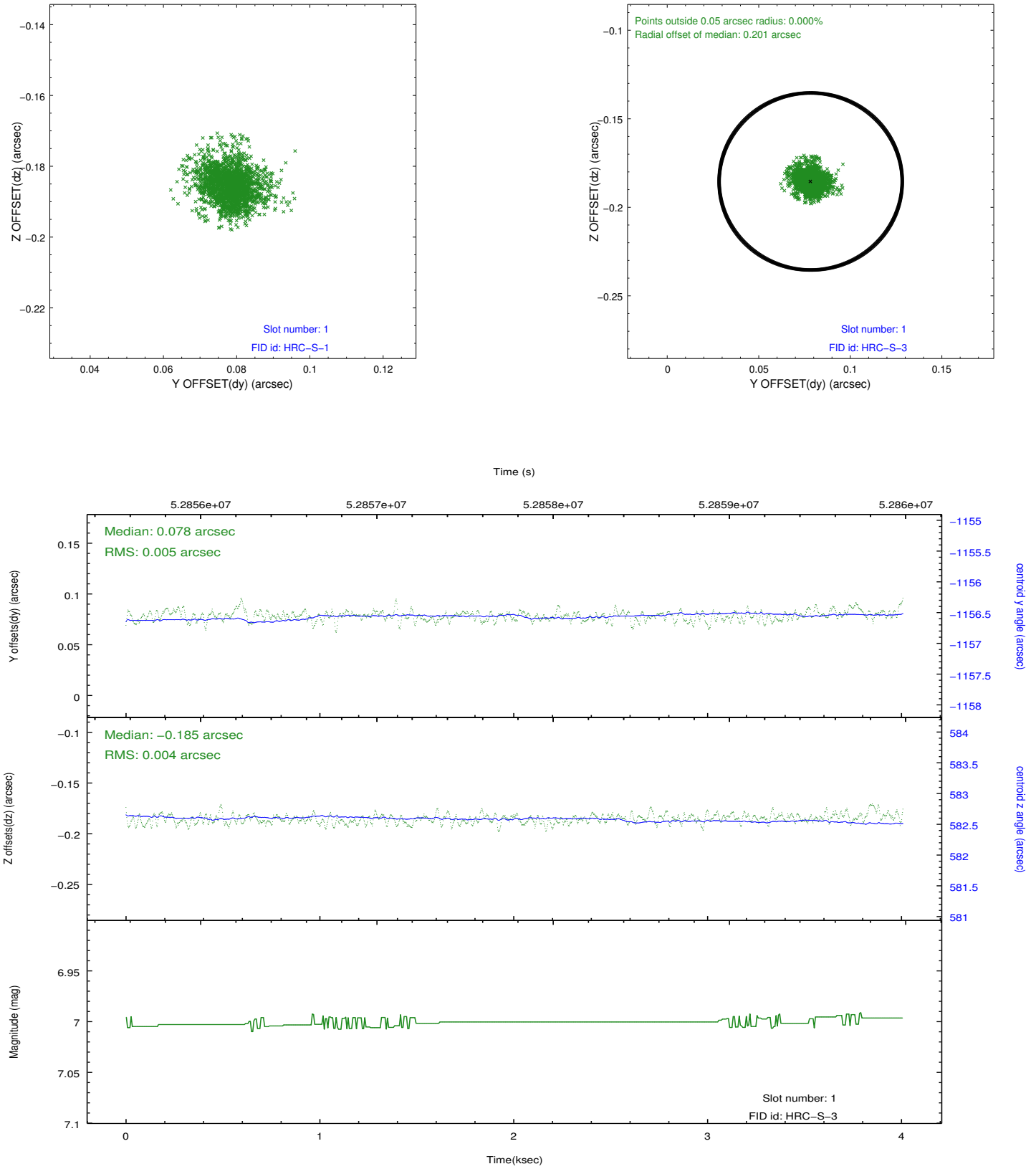


2.5 FID Slots

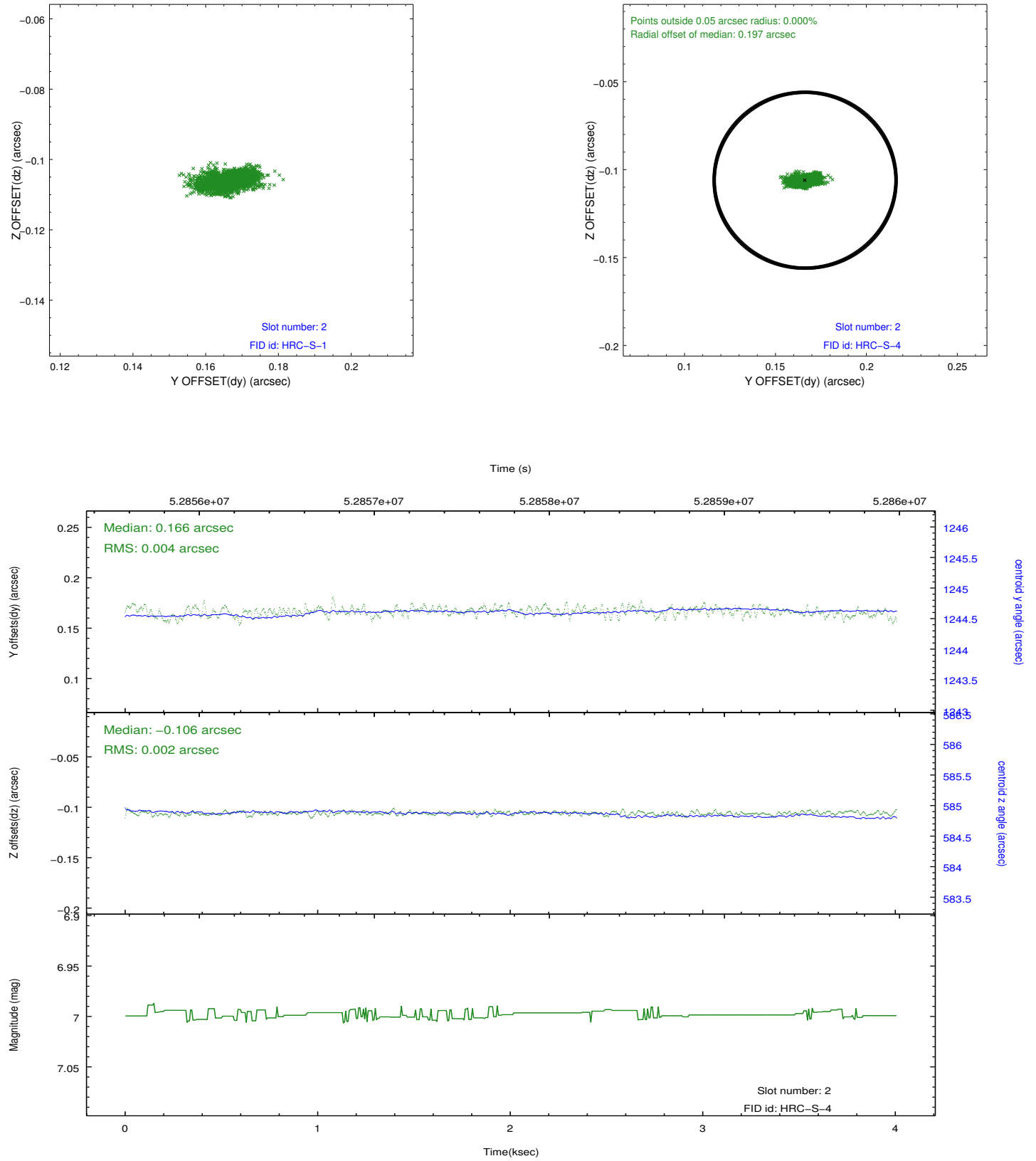
2.5.1 Slot 0



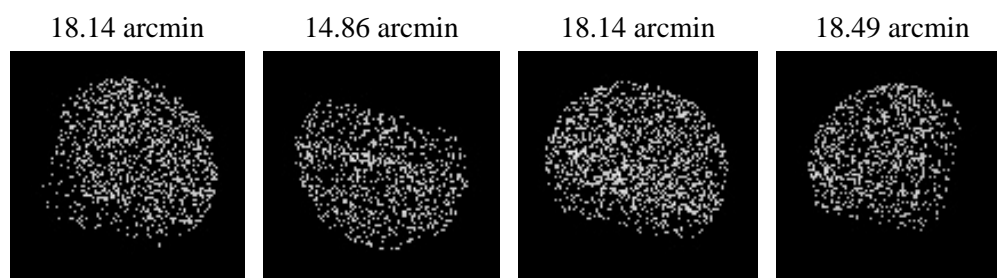
2.5.2 Slot 1



2.5.3 Slot 2



3 Point Sources



A Summary

A.1 Status

V&V Scientist	Joy Nichols
V&V Date (YYYY-MM-DD)	2010.01.19
V&V Edition	1
V&V Disposition and Status	OK
V&V Charge Time	2.511

A.2 Comments

Part of series to activate and focus HRC-S.

Charge time for this ObsId remains at original value of 2.511 ks,
although

with the current processing the charge time would have been 2.515 ksec.

=====