

V&V Reference Report

L2 ASCDS Version : 8.4.5

Observation 11989 - L2 Version 2
Chandra X-Ray Center

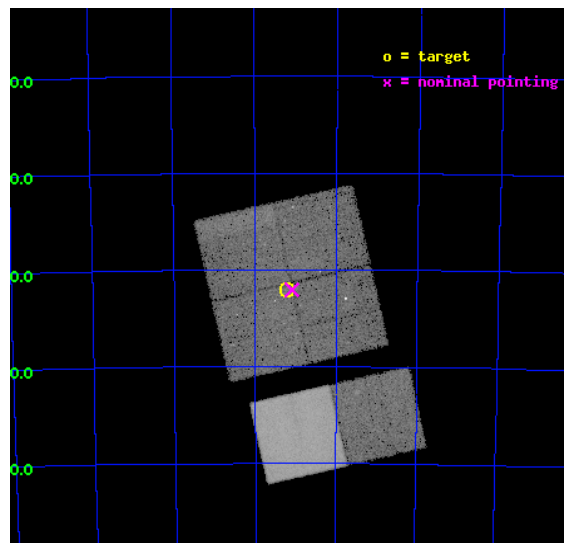
L2 Processing Date : Jun 24 2012

Contents

1	Front	2
2	OBI	3
2.1	OBI	3
2.1.1	Images	3
2.1.2	Bias	3
2.1.3	Parameters	4
2.1.4	Events	4
2.2	Compared Parameters	5
2.3	Aspect	6
2.4	Star Slots	9
2.4.1	Slot 3	9
2.4.2	Slot 4	10
2.4.3	Slot 5	11
2.4.4	Slot 6	12
2.4.5	Slot 7	13
2.5	FID Slots	14
2.5.1	Slot 0	14
2.5.2	Slot 1	15
2.5.3	Slot 2	16
A	Summary	17
A.1	Status	17
A.2	Comments	17

1 Front

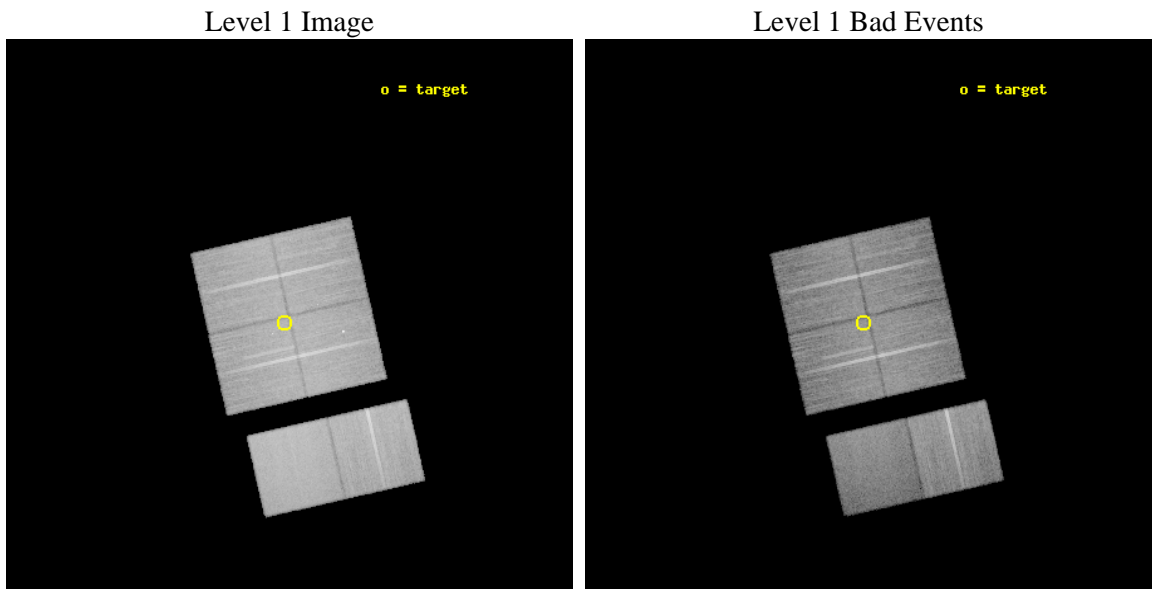
seq_num	200617	Sequence number
obs_id	11989	Observation id
title	Cosmic archaeology with Chandra: from a supergiant shell to young stellar objects in NGC 602	Proposal title
observer	Dr. Lidia Oskinova	Principal investigator
object	NGC 602	Source name
dtcycle	0	
cycle	P	events from which exps? Prim/Second/Both
ra_targ	22.301667	Observer's specified target RA [deg]
dec_targ	-73.533806	Observer's specified target Dec [deg]
ra_nom	22.273209204789	Nominal RA [deg]
dec_nom	-73.534429588075	Nominal Dec [deg]
roll_nom	167.18139034264	Nominal Roll [deg]
revision	2	Processing version of data
ontime	27183.999898791	Sum of GTIs [s]
livetime	26839.779723833	Livetime [s]
ontime0	27183.999898791	Sum of GTIs [s]
ontime1	27183.999898791	Sum of GTIs [s]
ontime2	27183.999898791	Sum of GTIs [s]
ontime3	27183.999898791	Sum of GTIs [s]
ontime6	27183.999898791	Sum of GTIs [s]
ontime7	27183.999898791	Sum of GTIs [s]
l2events	204231	Number of level 2 events



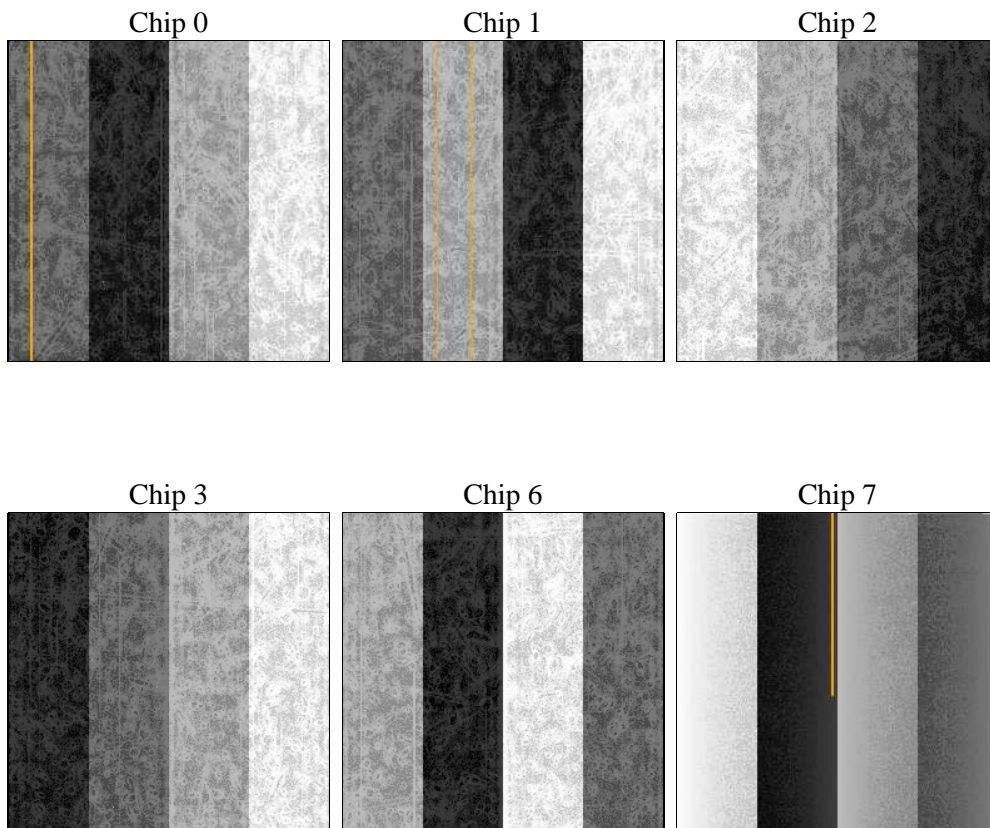
2 OBI

2.1 OBI

2.1.1 Images



2.1.2 Bias



2.1.3 Parameters

obi_num	0	Obi number	sched_exp_time	27000.000000	[s] Scheduled observation exposure time
ascdsver	8.4.5	Processing system revision	ontime	27183.999898791	Sum of GTIs [s]
caldsver	4.4.10	 	ontime0	27183.999898791	Sum of GTIs [s]
date	2012-06-24T22:40:58	Date and time of file creation	ontime1	27183.999898791	Sum of GTIs [s]
revision	2	Processing version of data	ontime2	27183.999898791	Sum of GTIs [s]
			ontime3	27183.999898791	Sum of GTIs [s]
			ontime6	27183.999898791	Sum of GTIs [s]
			ontime7	27183.999898791	Sum of GTIs [s]
			l1events	1304346	Number of level 1 events

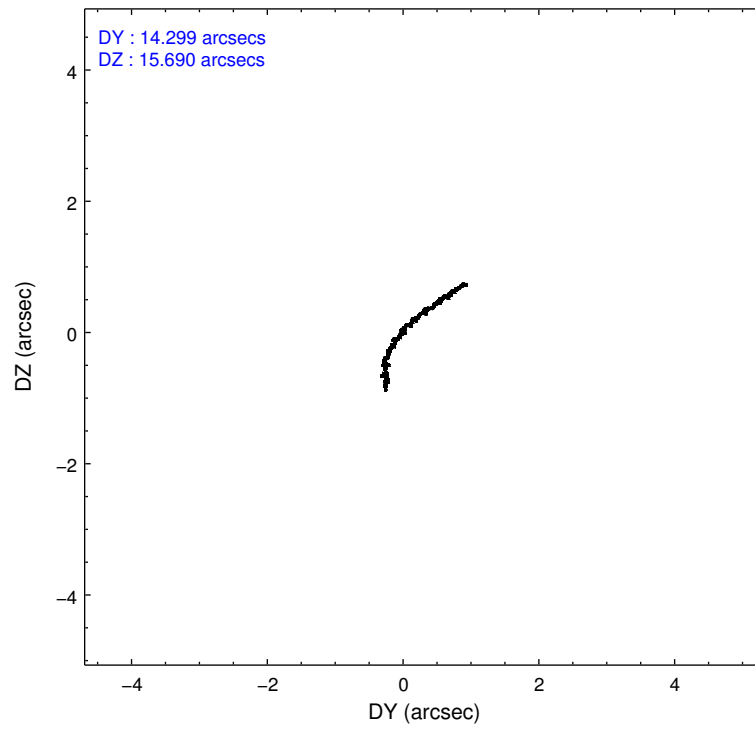
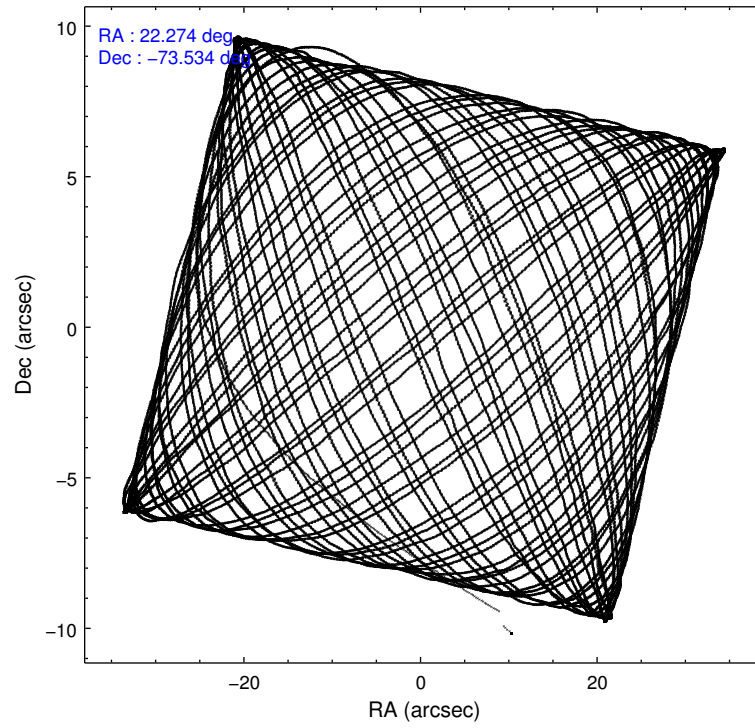
2.1.4 Events

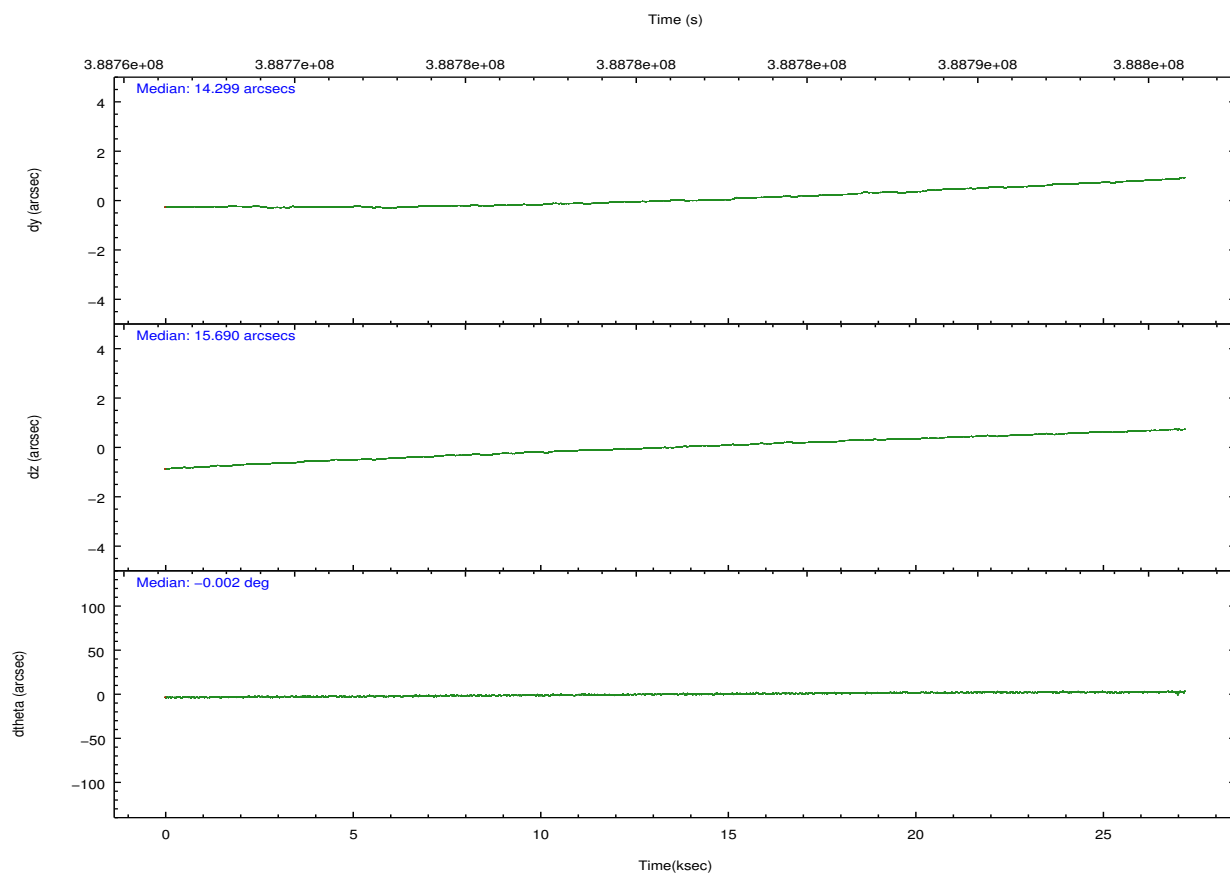
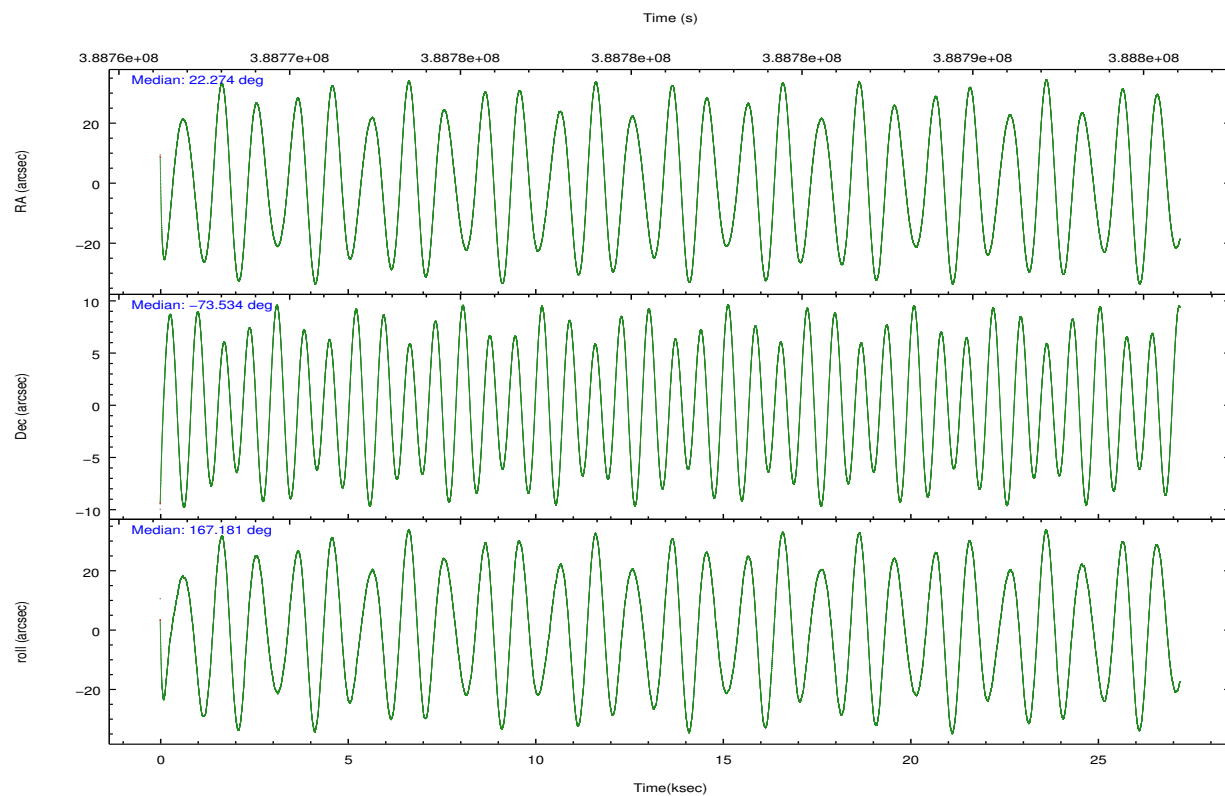
	ccd 0	ccd 1	ccd 2	ccd 3	ccd 6	ccd 7		ccd 0	ccd 1	ccd 2	ccd 3	ccd 6	ccd 7
level 1 events	195377	201024	217168	206706	227072	256999	grade 0 events	8156	8958	9122	7966	8249	10597
rejected events	173180	176730	194109	185462	204141	145062		4%	4%	4%	3%	3%	4%
rejected %	88%	87%	89%	89%	89%	56%	grade 1 events	127	109	146	117	117	342
								0%	0%	0%	0%	0%	0%
							grade 2 events	5567	5944	5491	4836	5381	23882
								2%	2%	2%	2%	2%	9%
							grade 3 events	2526	2642	2446	2471	2443	10554
								1%	1%	1%	1%	1%	4%
							grade 4 events	2384	2561	2403	2365	2501	10380
								1%	1%	1%	1%	1%	4%
							grade 5 events	8452	8972	8168	9417	9868	26987
								4%	4%	3%	4%	4%	10%
							grade 6 events	4409	5192	4462	4440	5266	61051
								2%	2%	2%	2%	2%	23%
							grade 7 events	163756	166646	184930	175094	193247	113206
								83%	82%	85%	84%	85%	44%

2.2 Compared Parameters

Parameter	Planned	Actual	Parameter	Planned	Actual
Instrument	ACIS	ACIS	Obspar format version number	7	7
Detector	ACIS-012367	ACIS-012367	Obspar file type	PREDICTED	ACTUAL
Grating	NONE	NONE	Obspar update status	NONE	UPDATED
Data mode	FAINT	FAINT	CCD I0 on	Y	Y
Observation mode	POINTING	POINTING	CCD I1 on	Y	Y
[deg] Pointing RA	22.365768	22.27320920478905	CCD I2 on	Y	Y
[deg] Pointing Dec	-73.526187	-73.53442958807511	CCD I3 on	Y	Y
[deg] Pointing Roll	167.061468	167.1813903426369	CCD S0 on	N	N
[mm] SIM focus pos	-0.782348	-0.7809083437167272	CCD S1 on	N	N
[mm] SIM defocus	0	0.001439871863259334	CCD S2 on	O1	Y
[mm] SIM translation stage pos	-233.592463	-233.5874344608287	CCD S3 on	Y	Y
[mm] SIM translation stage offset	0	-0.005018542100998502	CCD S4 on	N	N
[s] Observation start time (MET)	388767726.184000	388766118.94764	CCD S5 on	N	N
Observation start date	2010-04-27T15:01:00	2010-04-27T14:35:18	Number of optional ACIS chips dropped	0	0
[s] Observation end time (MET)	388794726.184000	388796069.96166	On-chip summing requested	N	N
Observation end date	2010-04-27T22:31:00	2010-04-27T22:54:29	Subarray requested	NONE	NONE
Read mode	TIMED	TIMED	Alternating exposures requested	N	N
			[s] Primary exposure time	0.000000	3.2

2.3 Aspect



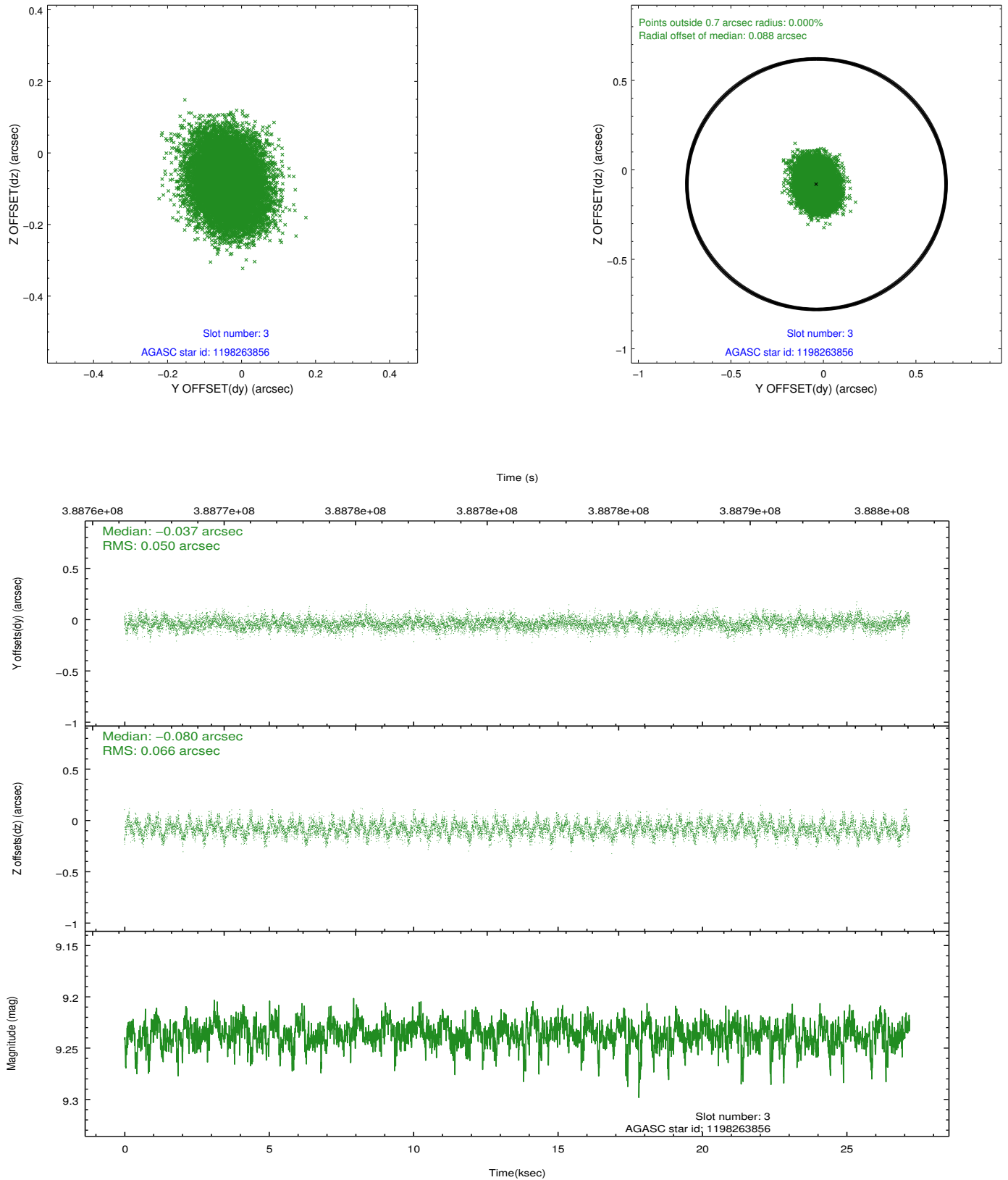


Slot Statistics

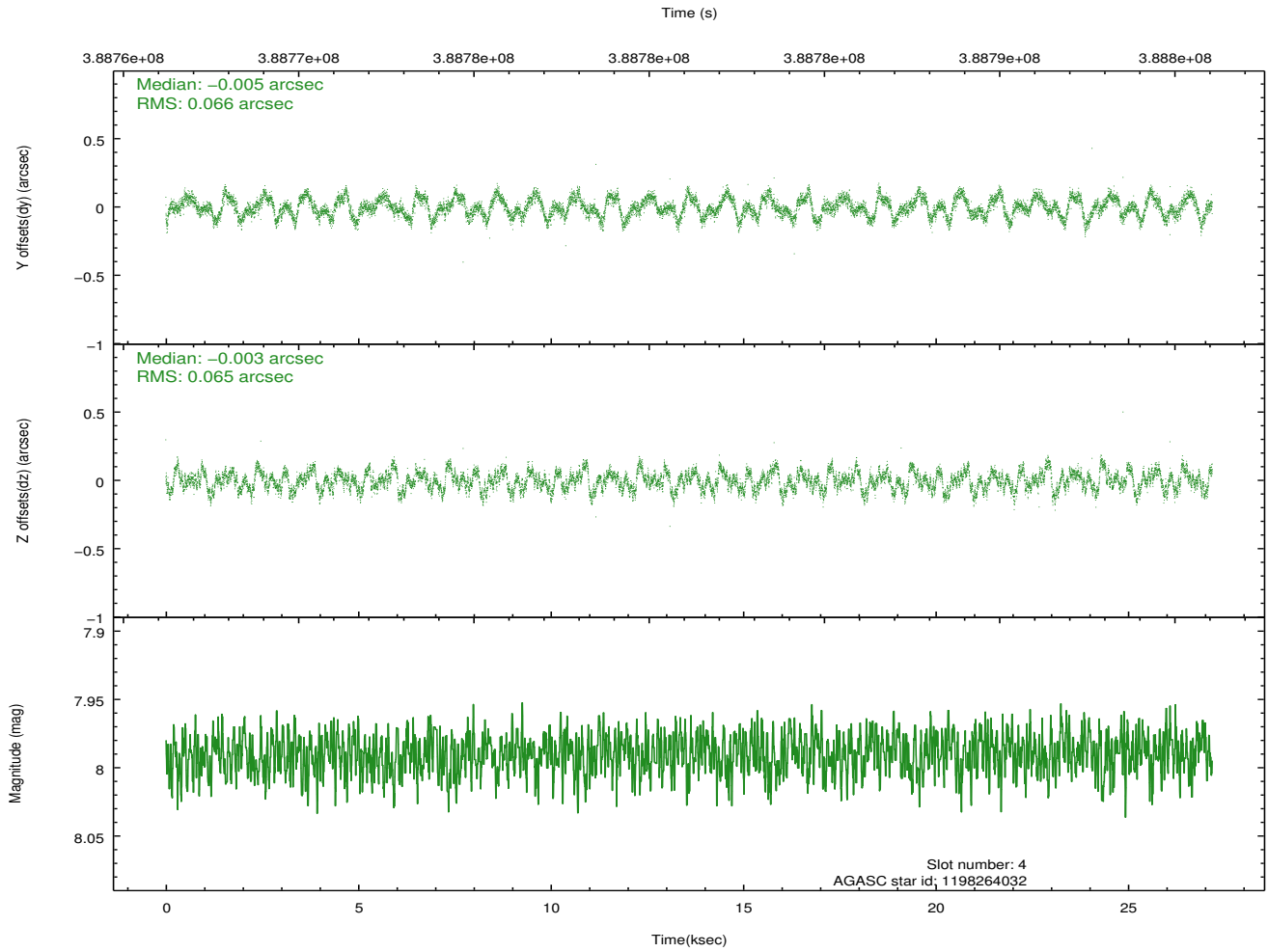
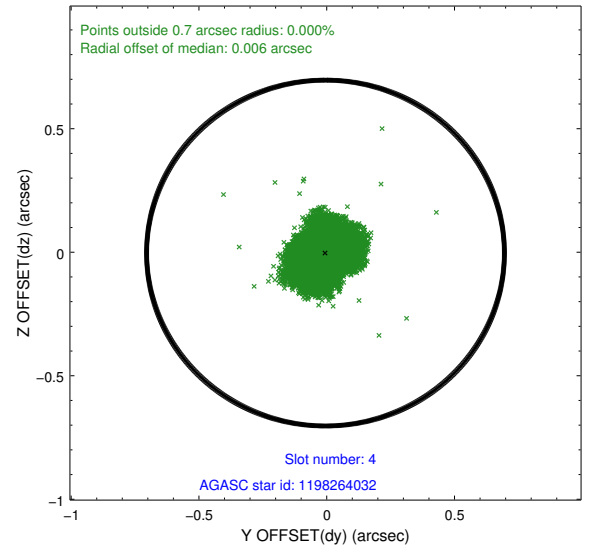
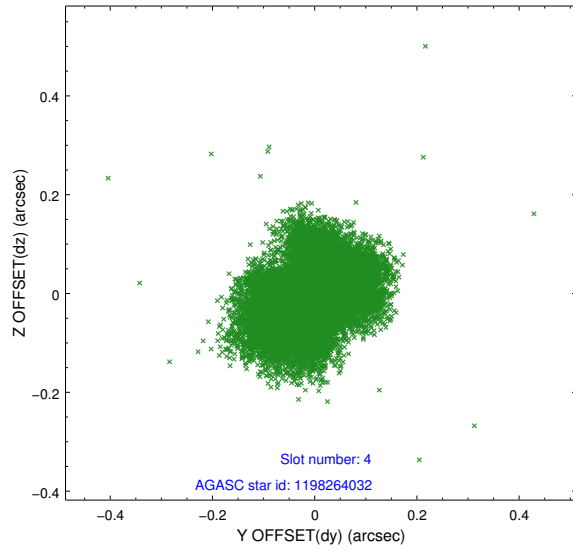
slot	status	id	mag	n_pts	med_dy	med_dz	dr1	dr2	ra	dec	mean_y	mean_z
0	FID	ACIS-I-1	7.04	6632	0.059	-0.042	0.021	0.040	0.000000	0.000000	925.12	-839.34
1	FID	ACIS-I-5	7.04	6632	-0.229	0.053	0.012	0.018	0.000000	0.000000	-1823.22	1058.20
2	FID	ACIS-I-6	7.04	6632	0.082	0.058	0.014	0.023	0.000000	0.000000	390.59	1702.81
3	GUIDE	1198263856	9.24	13251	-0.037	-0.080	0.088	0.146	23.344483	-73.858921	-1224.28	956.07
4	GUIDE	1198264032	7.99	13263	-0.005	-0.003	0.101	0.148	22.563131	-73.173817	84.15	-1281.32
5	GUIDE	1198268712	8.52	13257	0.056	0.073	0.074	0.120	21.961983	-73.269598	614.43	-805.17
6	GUIDE	1198272400	9.15	13256	-0.165	-0.150	0.098	0.150	20.411923	-73.620598	1849.71	806.97
7	GUIDE	1199188856	9.00	13250	0.149	0.162	0.092	0.147	24.755443	-73.162573	-2145.29	-1784.55

2.4 Star Slots

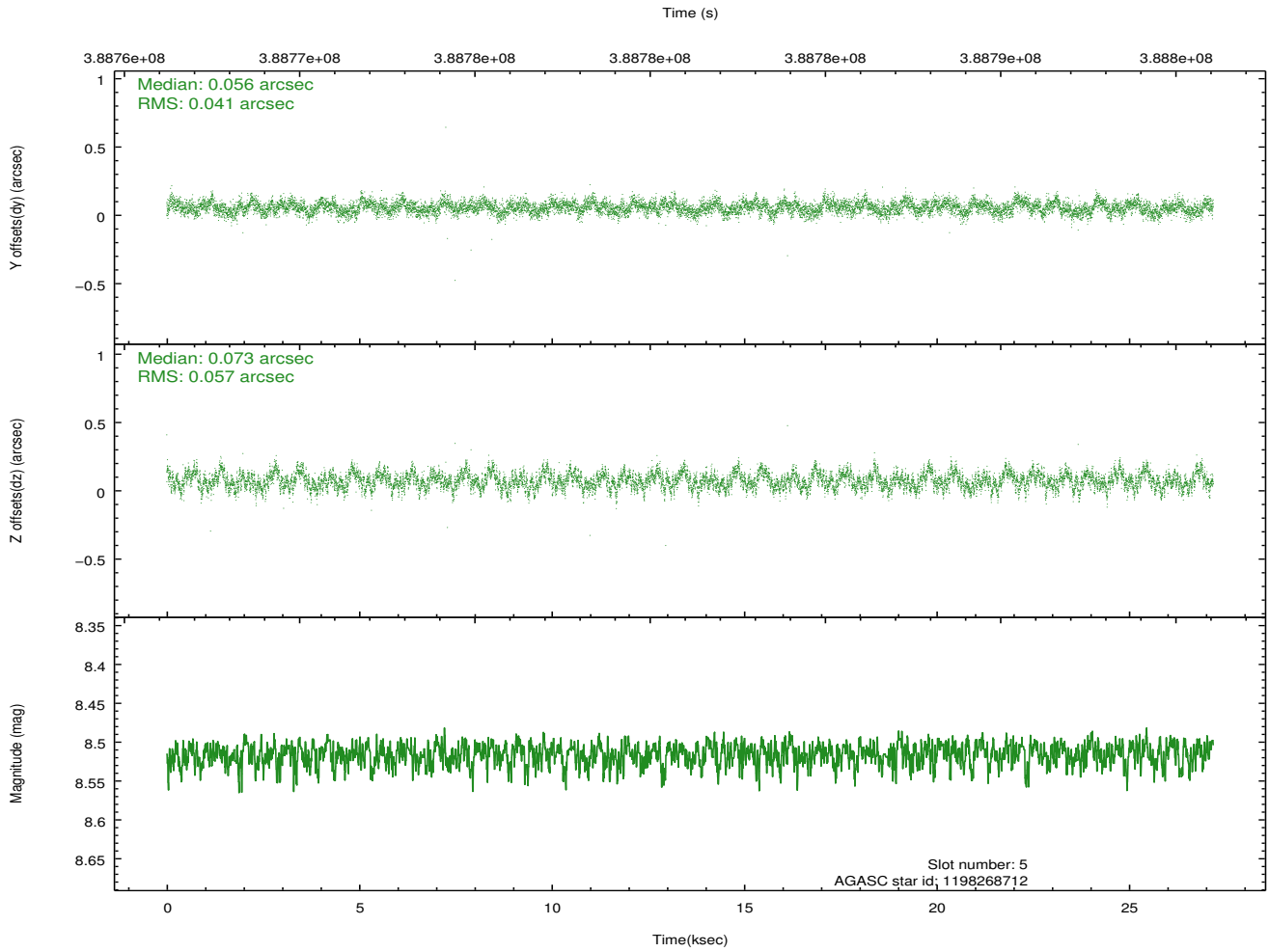
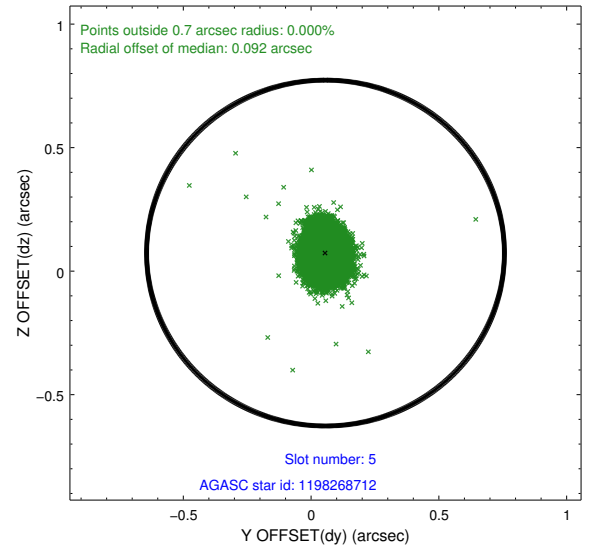
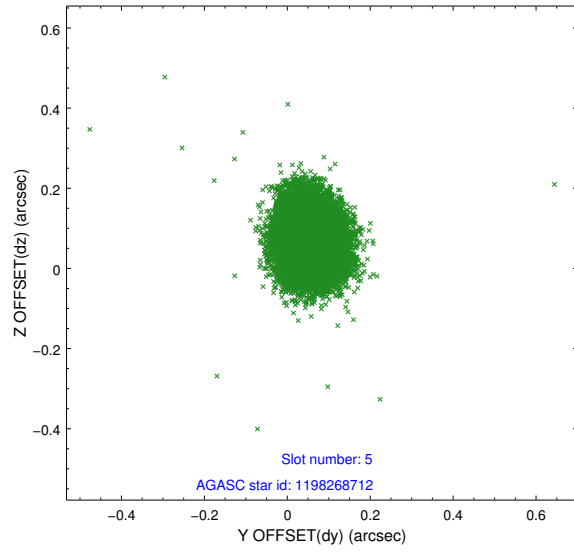
2.4.1 Slot 3



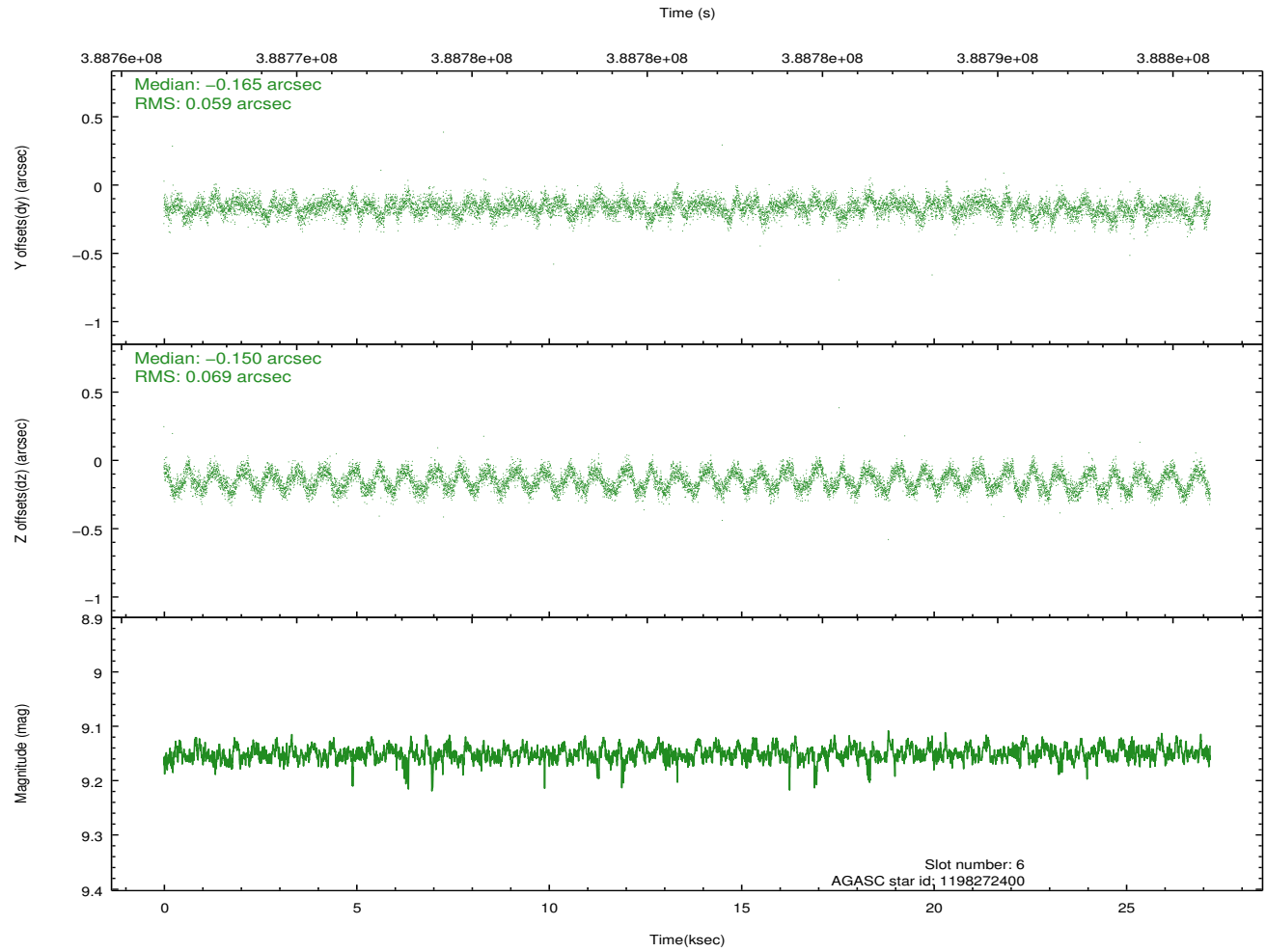
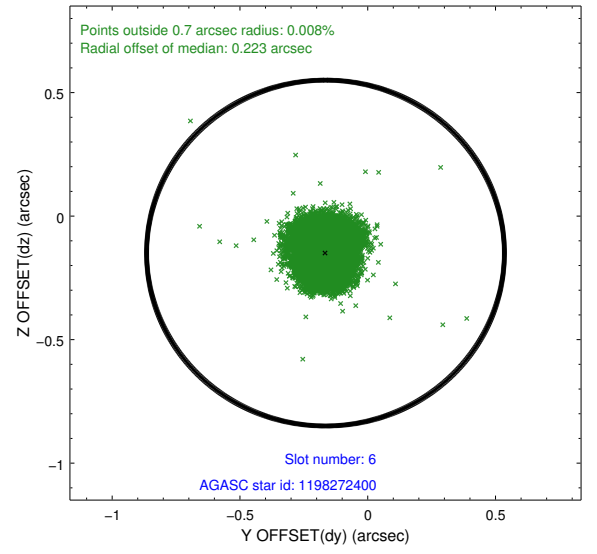
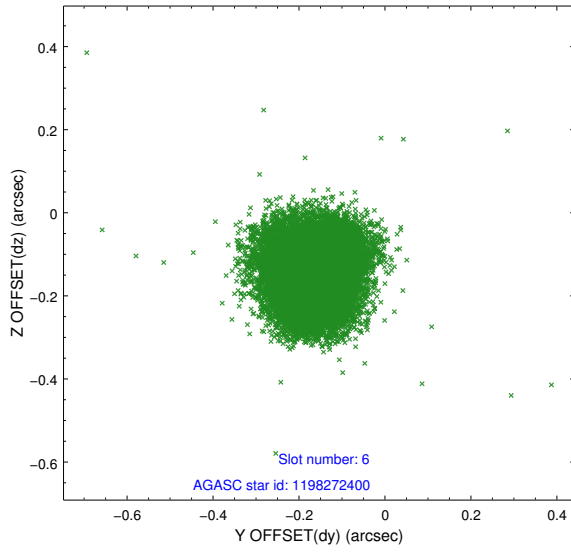
2.4.2 Slot 4



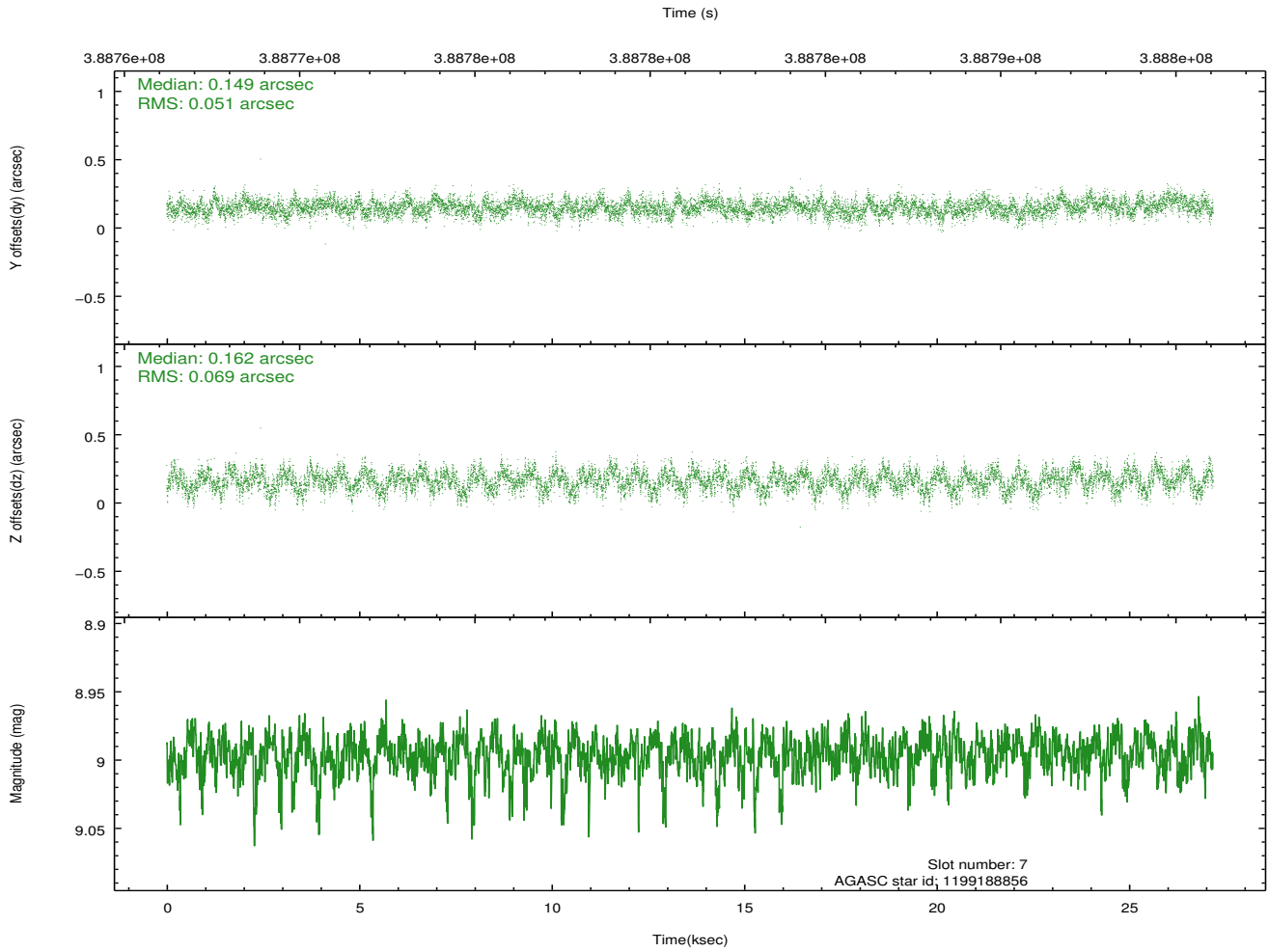
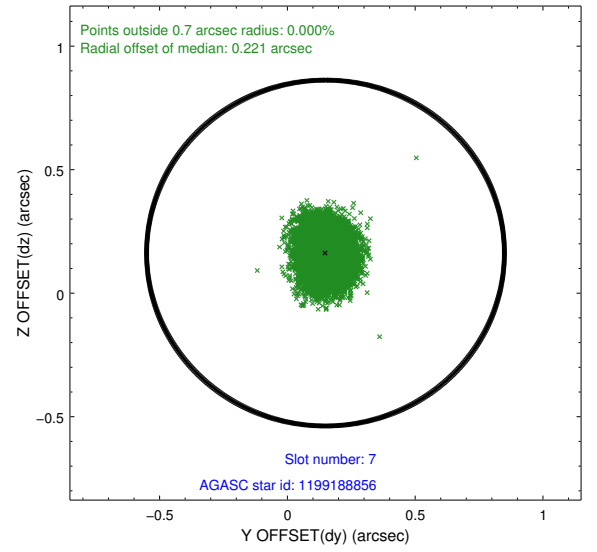
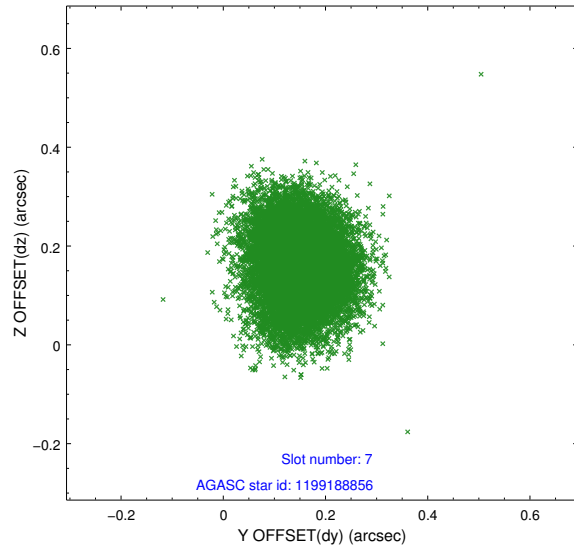
2.4.3 Slot 5



2.4.4 Slot 6

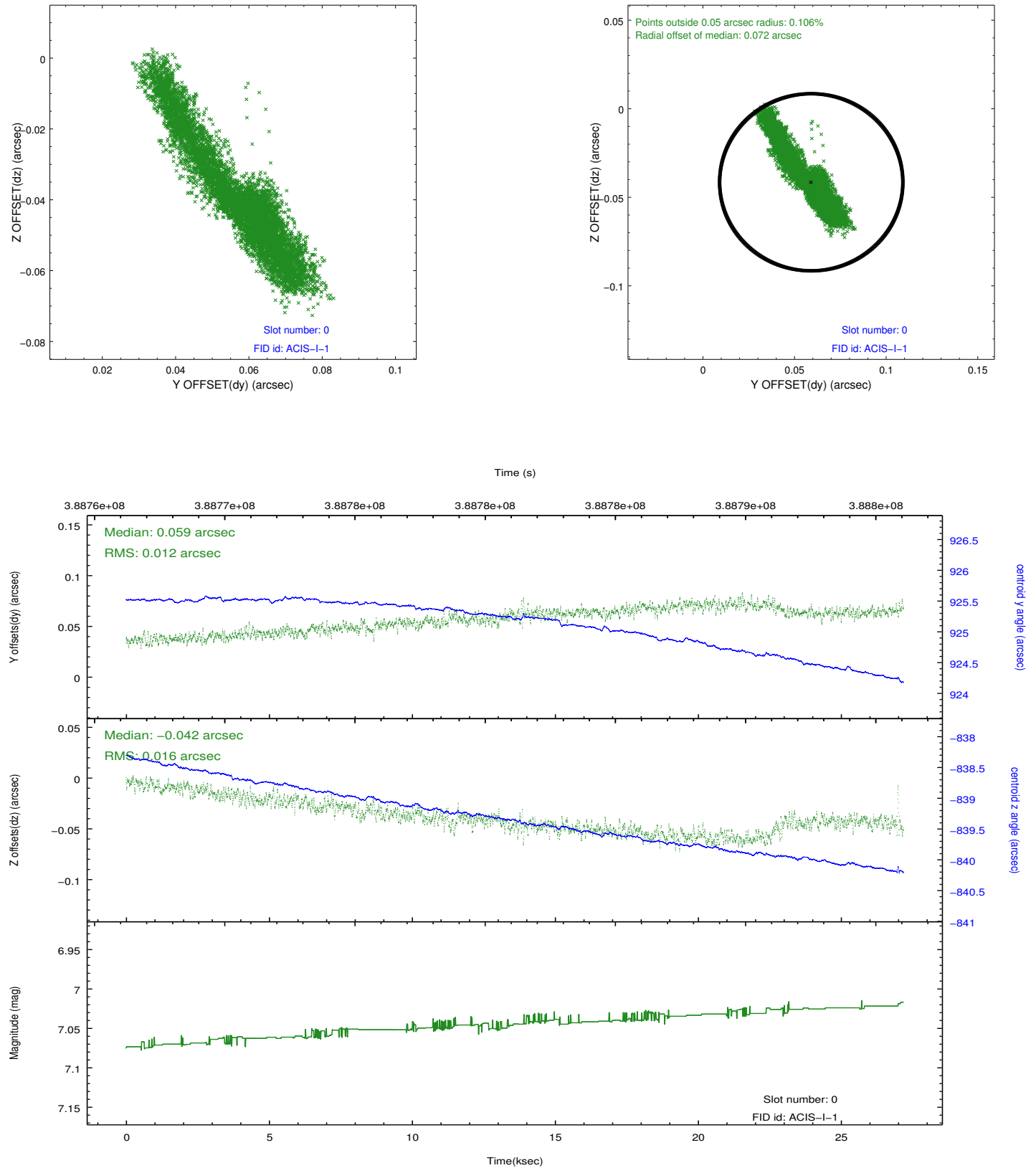


2.4.5 Slot 7

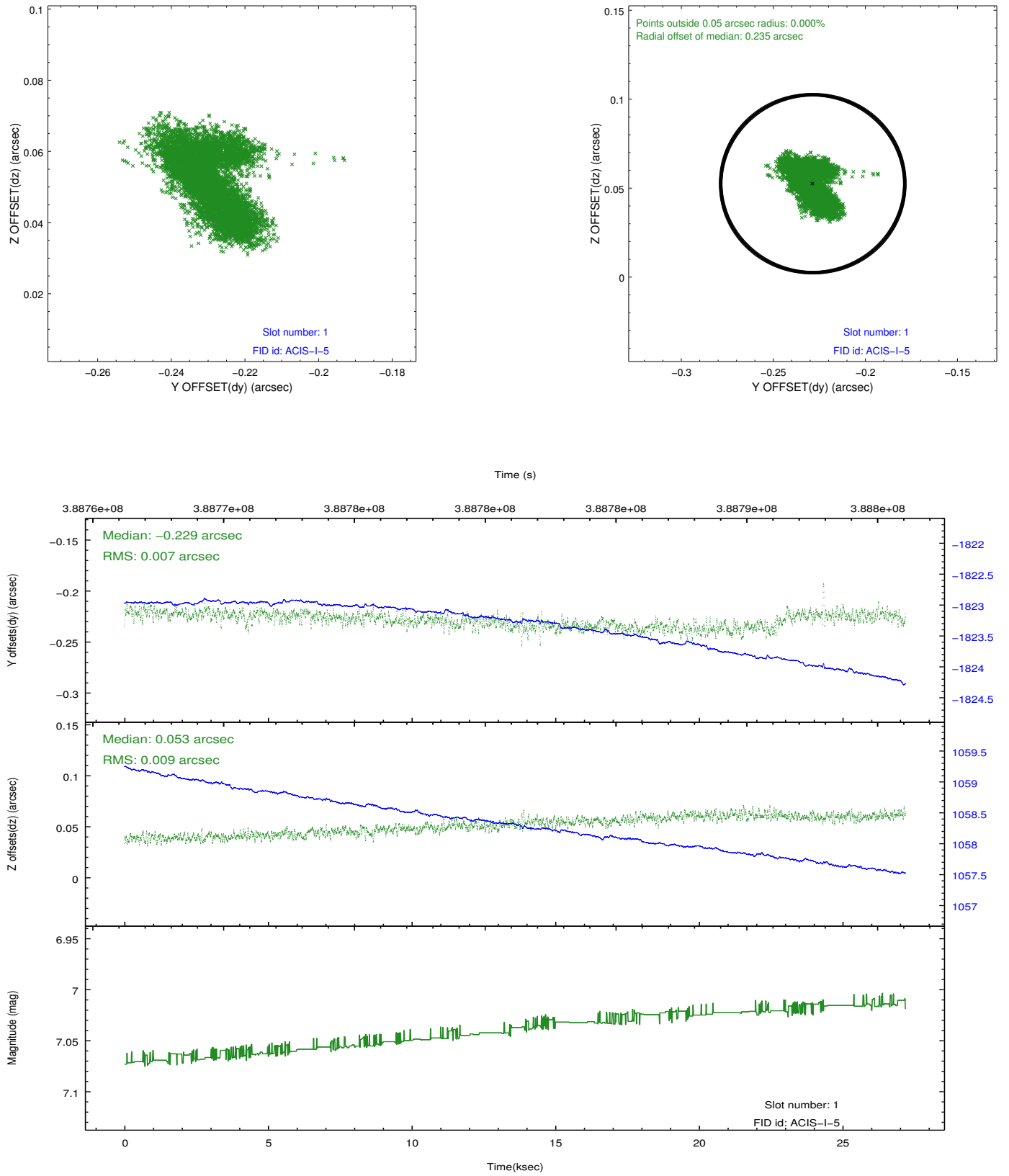


2.5 FID Slots

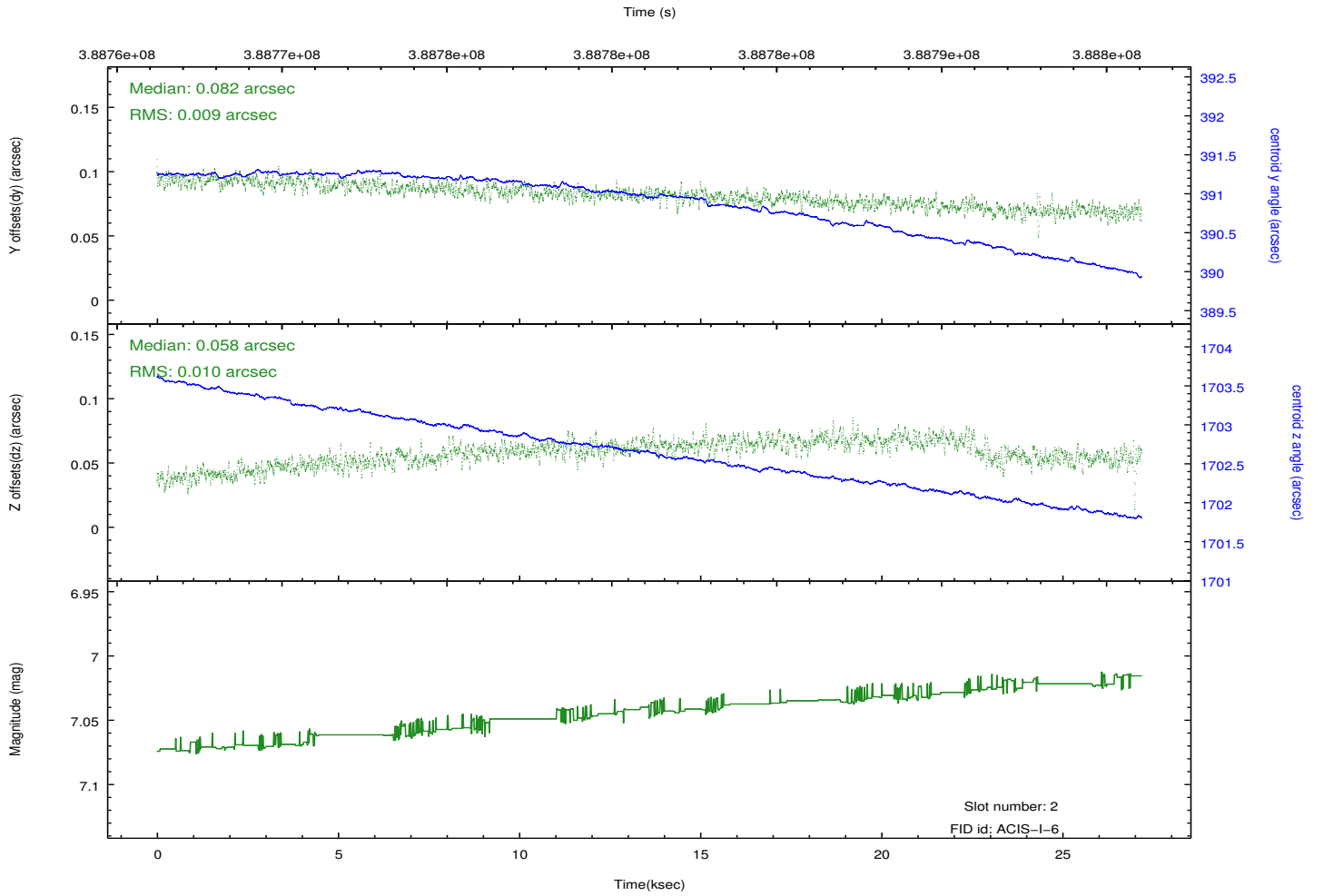
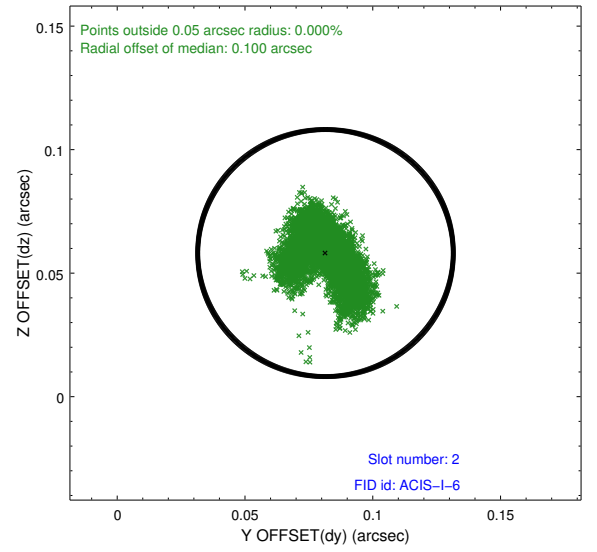
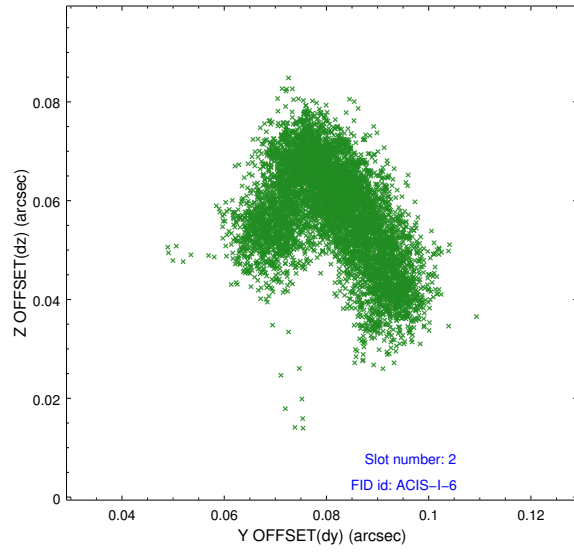
2.5.1 Slot 0



2.5.2 Slot 1



2.5.3 Slot 2



A Summary

A.1 Status

V&V Scientist	Beth Sundheim
V&V Date (YYYY-MM-DD)	2012.07.01
V&V Edition	1
V&V Disposition and Status	OK
V&V Charge Time	27.183999898791

A.2 Comments