

# V&V Reference Report

## L2 ASCDS Version : 8.4.5

Observation 11959 - L2 Version 2  
Chandra X-Ray Center

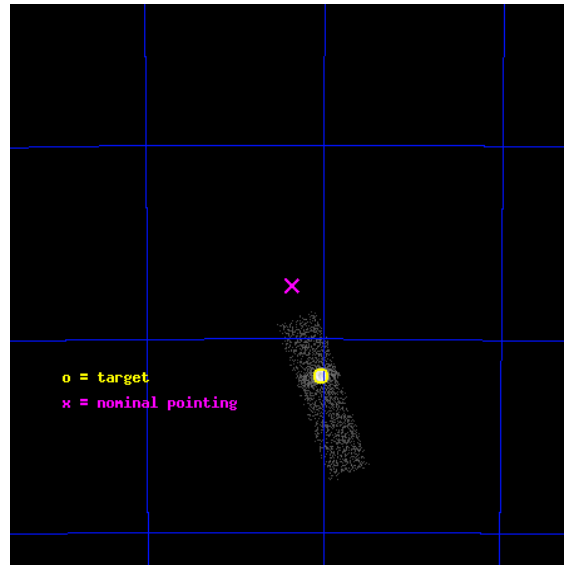
L2 Processing Date : Jun 20 2012

## Contents

<b>1</b>	<b>Front</b>	<b>2</b>
<b>2</b>	<b>OBI</b>	<b>3</b>
2.1	OBI . . . . .	3
2.1.1	Images . . . . .	3
2.1.2	Bias . . . . .	3
2.1.3	Parameters . . . . .	4
2.1.4	Events . . . . .	4
2.2	Compared Parameters . . . . .	5
2.3	Aspect . . . . .	6
2.4	Star Slots . . . . .	9
2.4.1	Slot 3 . . . . .	9
2.4.2	Slot 4 . . . . .	10
2.4.3	Slot 5 . . . . .	11
2.4.4	Slot 6 . . . . .	12
2.4.5	Slot 7 . . . . .	13
2.5	FID Slots . . . . .	14
2.5.1	Slot 0 . . . . .	14
2.5.2	Slot 1 . . . . .	15
2.5.3	Slot 2 . . . . .	16
<b>A</b>	<b>Summary</b>	<b>17</b>
A.1	Status . . . . .	17
A.2	Comments . . . . .	17

# 1 Front

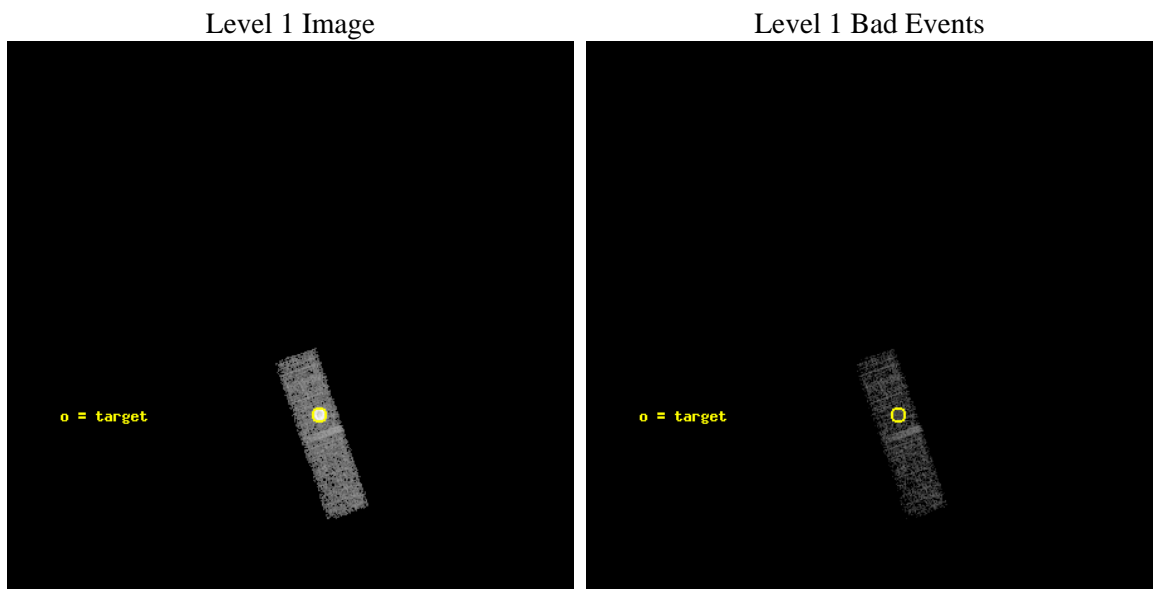
seq_num	590502	Sequence number
obs_id	11959	Observation id
title	AO-11 Calibration Observations of E0102-72	Proposal title
observer	Dr. CXC Calibration	Principal investigator
object	E0102-72 S2,-120,5.15,0,0	Source name
dtcycle	0	&#160
cycle	P	events from which exps? Prim/Second/Both
ra_targ	16.01	Observer's specified target RA [deg]
dec_targ	-72.032028	Observer's specified target Dec [deg]
ra_nom	16.091305081576	Nominal RA [deg]
dec_nom	-71.954329438235	Nominal Dec [deg]
roll_nom	251.13846594921	Nominal Roll [deg]
revision	2	Processing version of data
ontime	7660.7590742111	Sum of GTIs [s]
livetime	7286.9390984601	Livetime [s]
ontime6	7660.7590742111	Sum of GTIs [s]
l2events	25033	Number of level 2 events



## 2 OBI

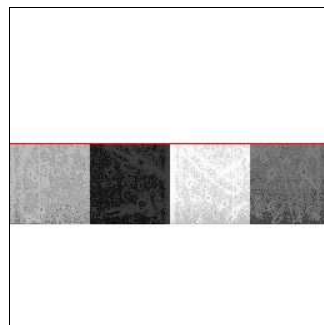
### 2.1 OBI

#### 2.1.1 Images



#### 2.1.2 Bias

Chip 6



### 2.1.3 Parameters

obi_num	0	Obi number	sched_exp_time	7500.000000	[s] Scheduled observation exposure time
ascdsver	8.4.5	Processing system revision	ontime	7660.7590742111	Sum of GTIs [s]
caldsver	4.4.10	&#160	ontime6	7660.7590742111	Sum of GTIs [s]
date	2012-06-20T12:05:08	Date and time of file creation	l1events	47876	Number of level 1 events
revision	2	Processing version of data			

### 2.1.4 Events

	<b>ccd 6</b>
level 1 events	47876
rejected events	21366
rejected %	44%

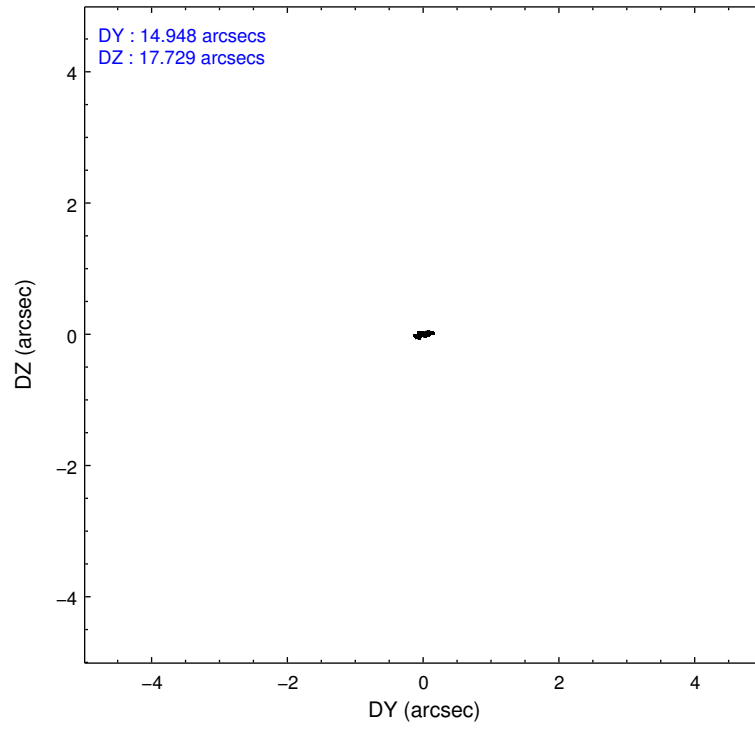
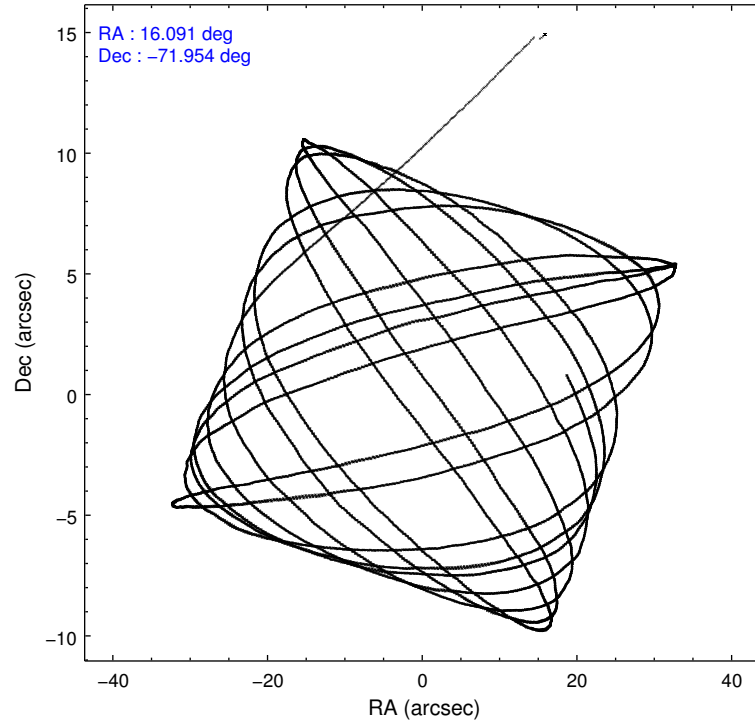
	<b>ccd 6</b>
grade 0 events	23113
	48%
grade 1 events	63
	0%
grade 2 events	2122
	4%
grade 3 events	776
	1%
grade 4 events	801
	1%
grade 5 events	731
	1%
grade 6 events	559
	1%
grade 7 events	19711
	41%

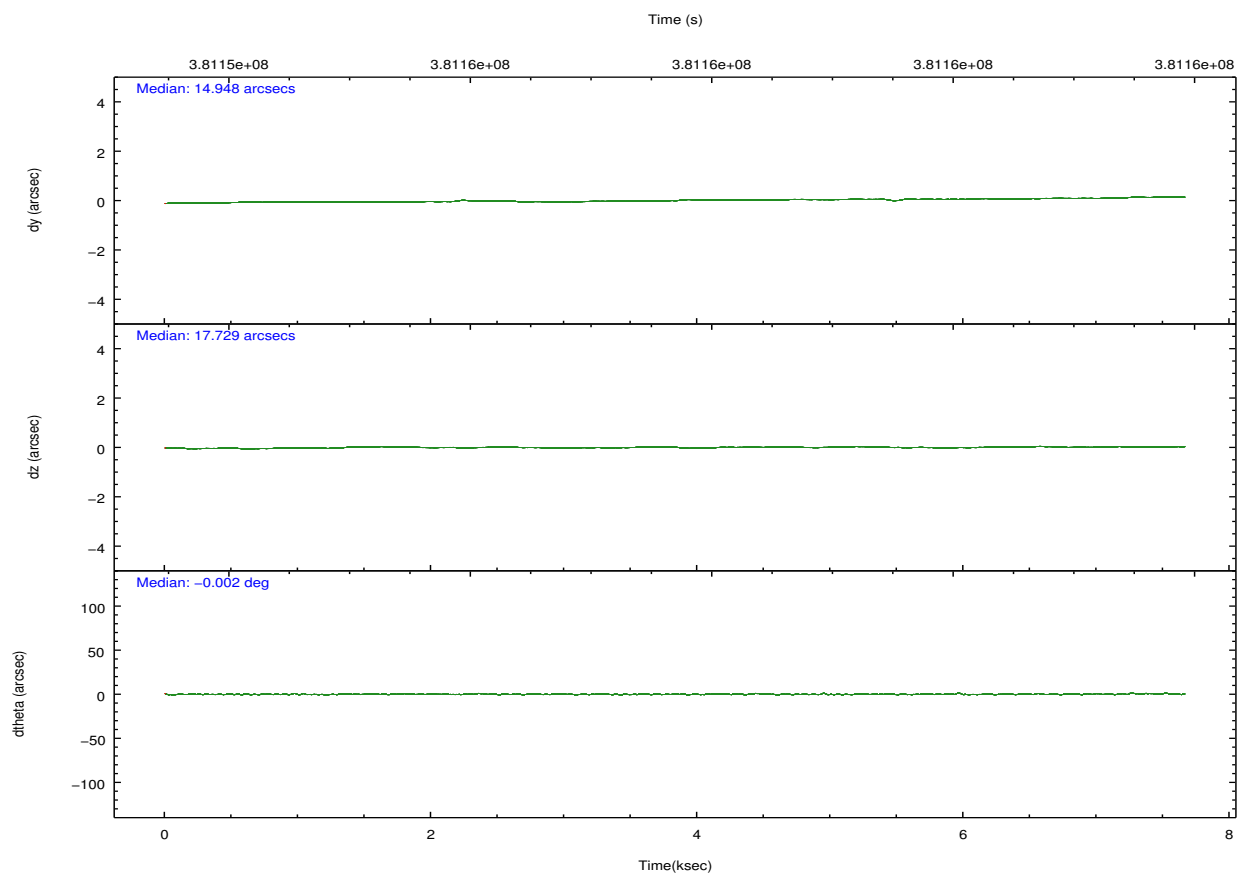
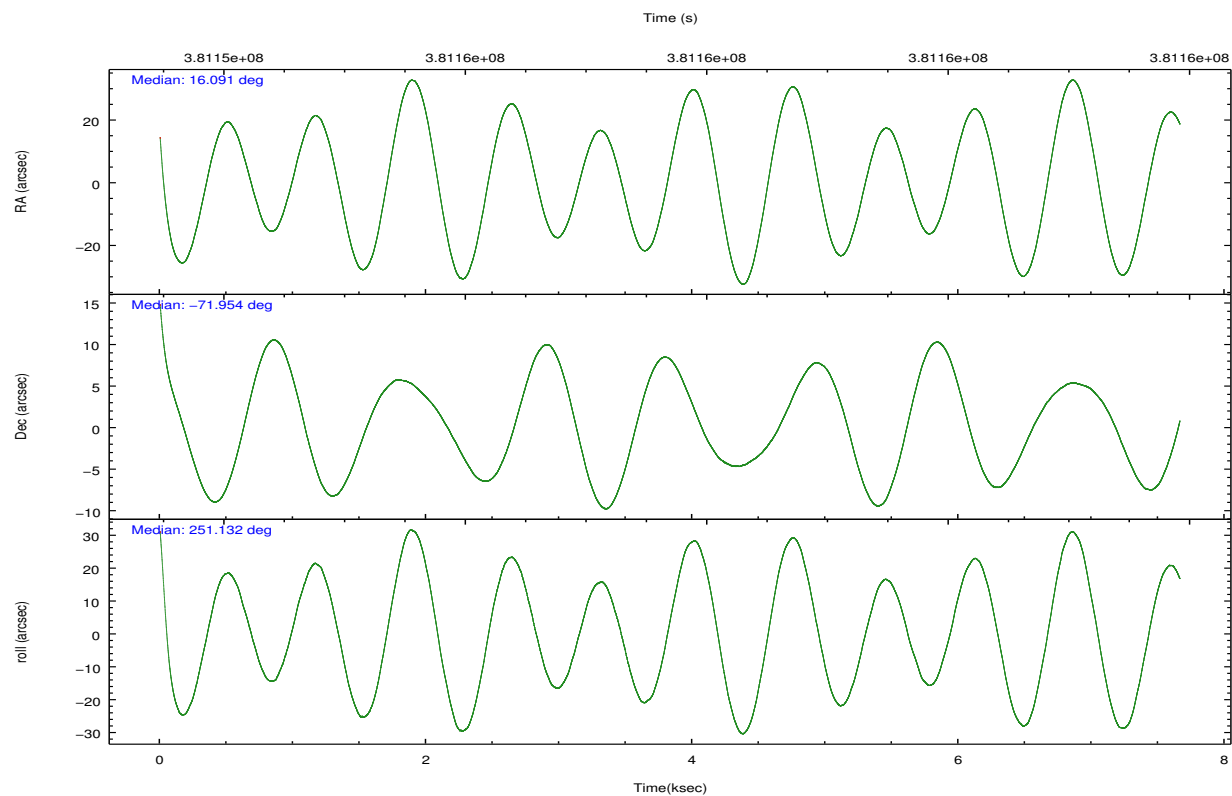


## 2.2 Compared Parameters

Parameter	Planned	Actual	Parameter	Planned	Actual
Instrument	ACIS	ACIS	Obspar format version number	7	7
Detector	ACIS-6	ACIS-6	Obspar file type	PREDICTED	ACTUAL
Grating	NONE	NONE	Obspar update status	NONE	UPDATED
Data mode	VFAINT	VFAINT	Number of optional ACIS chips dropped	0	0
Observation mode	POINTING	POINTING	On-chip summing requested	N	N
[deg] Pointing RA	16.073172	16.09130508157587	Subarray requested	CUSTOM	1/4
[deg] Pointing Dec	-71.927512	-71.95432943823474	Subarray start row	335	335
[deg] Pointing Roll	250.964583	251.1384659492051	Subarray row count	256	256
[s] Window start time (MET)	376012866.184000	376012866.184000	Alternating exposures requested	N	N
[s] Window stop time (MET)	388972866.184000	388972866.184000	[s] Primary exposure time	0.000000	0.8
[mm] SIM focus pos	-0.684267	-0.6828225247311905			
[mm] SIM defocus	0	0.001444936568705701			
[mm] SIM translation stage pos	-190.132523	-190.1425803651734			
[mm] SIM translation stage offset	0	0.01005778216563158			
[s] Observation start time (MET)	381154025.184000	381152337.07373			
Observation start date	2010-01-29T12:05:59	2010-01-29T11:38:57			
[s] Observation end time (MET)	381161525.184000	381162517.88675			
Observation end date	2010-01-29T14:10:59	2010-01-29T14:28:37			
Read mode	TIMED	TIMED			

## 2.3 Aspect



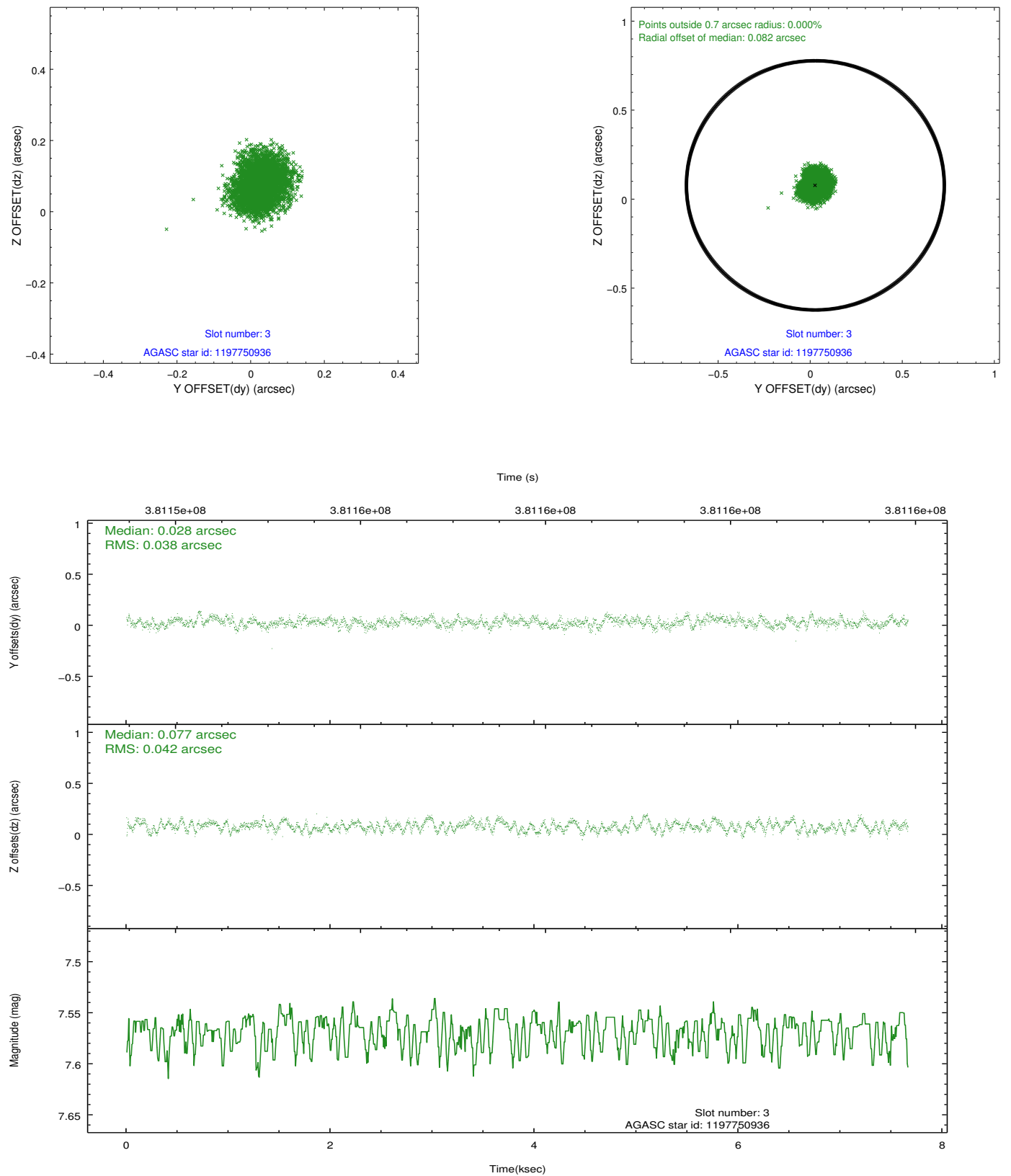


### Slot Statistics

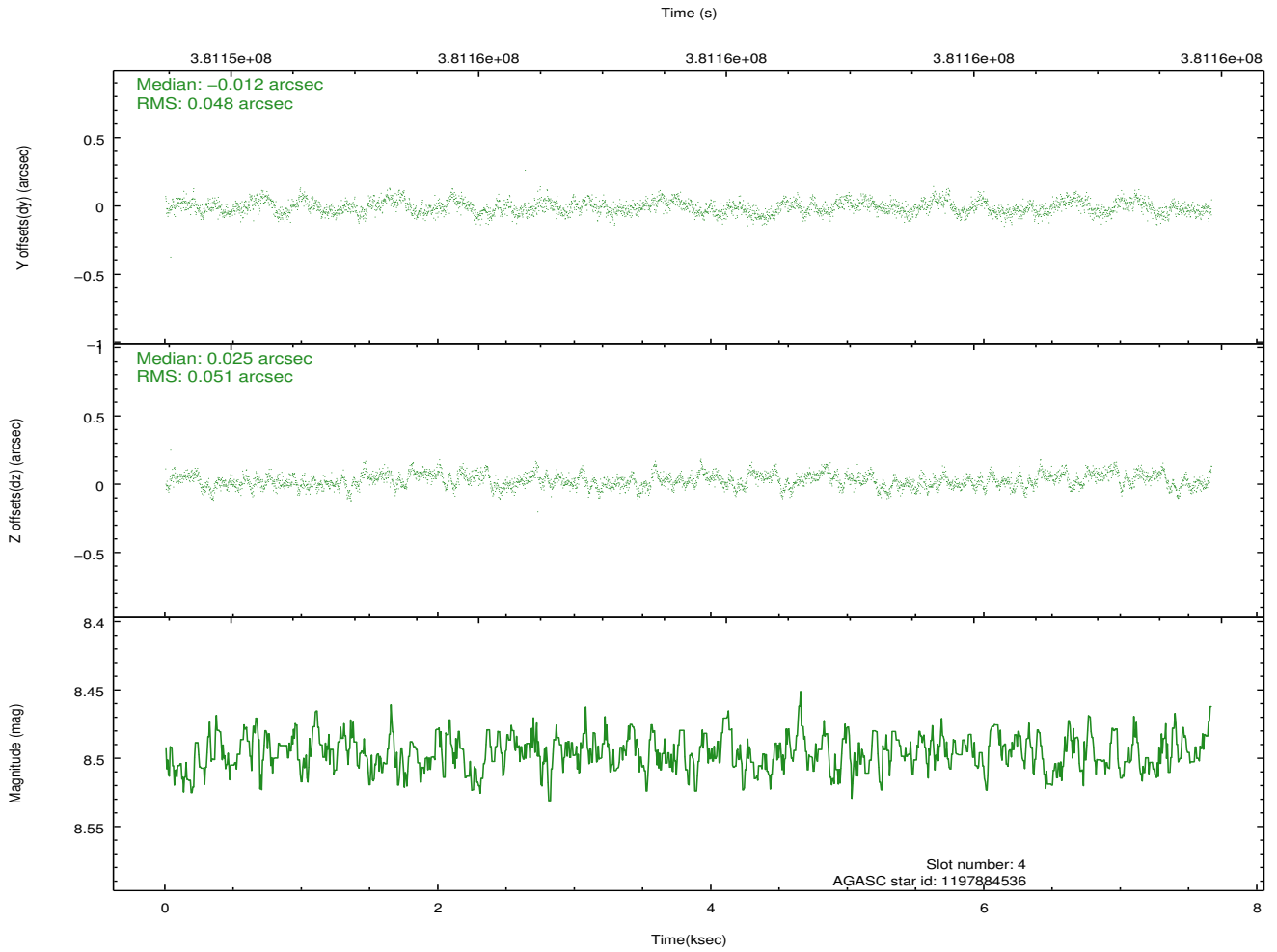
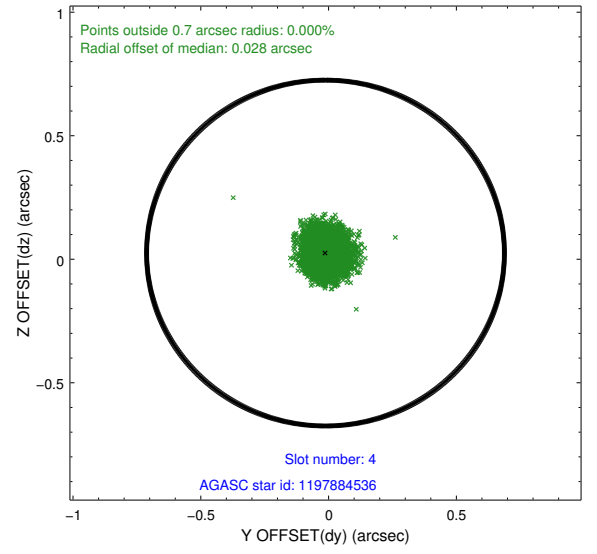
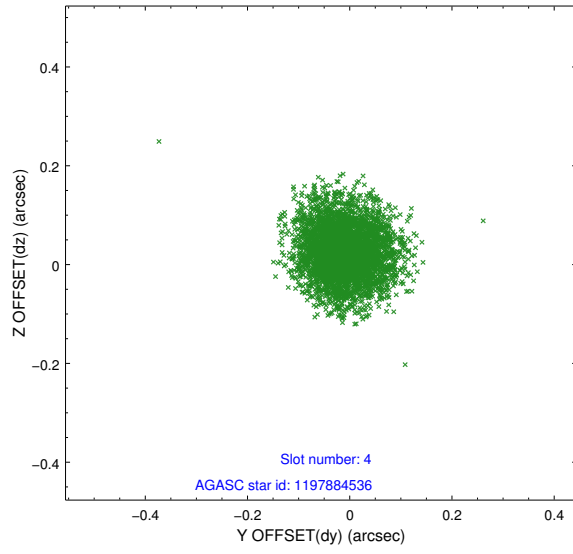
slot	status	id	mag	n_pts	med_dy	med_dz	dr1	dr2	ra	dec	mean_y	mean_z
0	FID	ACIS-S-2	6.88	1870	-0.058	-0.045	0.007	0.011	0.000000	0.000000	-768.03	-1739.15
1	FID	ACIS-S-4	6.96	1870	0.173	0.040	0.006	0.011	0.000000	0.000000	2145.19	168.57
2	FID	ACIS-S-5	7.00	1870	-0.146	0.014	0.007	0.011	0.000000	0.000000	-1819.96	163.17
3	GUIDE	1197750936	7.57	3738	0.028	0.077	0.062	0.095	15.387940	-71.549550	-1027.02	-1179.98
4	GUIDE	1197884536	8.50	3736	-0.012	0.025	0.075	0.119	17.160729	-71.835289	-701.98	1048.86
5	GUIDE	1197884712	8.30	3738	0.061	-0.071	0.065	0.106	16.087398	-72.252690	1101.34	397.11
6	GUIDE	1198283128	7.75	3738	-0.087	0.000	0.066	0.107	17.272580	-72.642428	2024.96	2061.82
7	GUIDE	1197885104	9.36	3738	0.010	-0.034	0.096	0.156	17.845067	-72.189368	282.99	2161.50

## 2.4 Star Slots

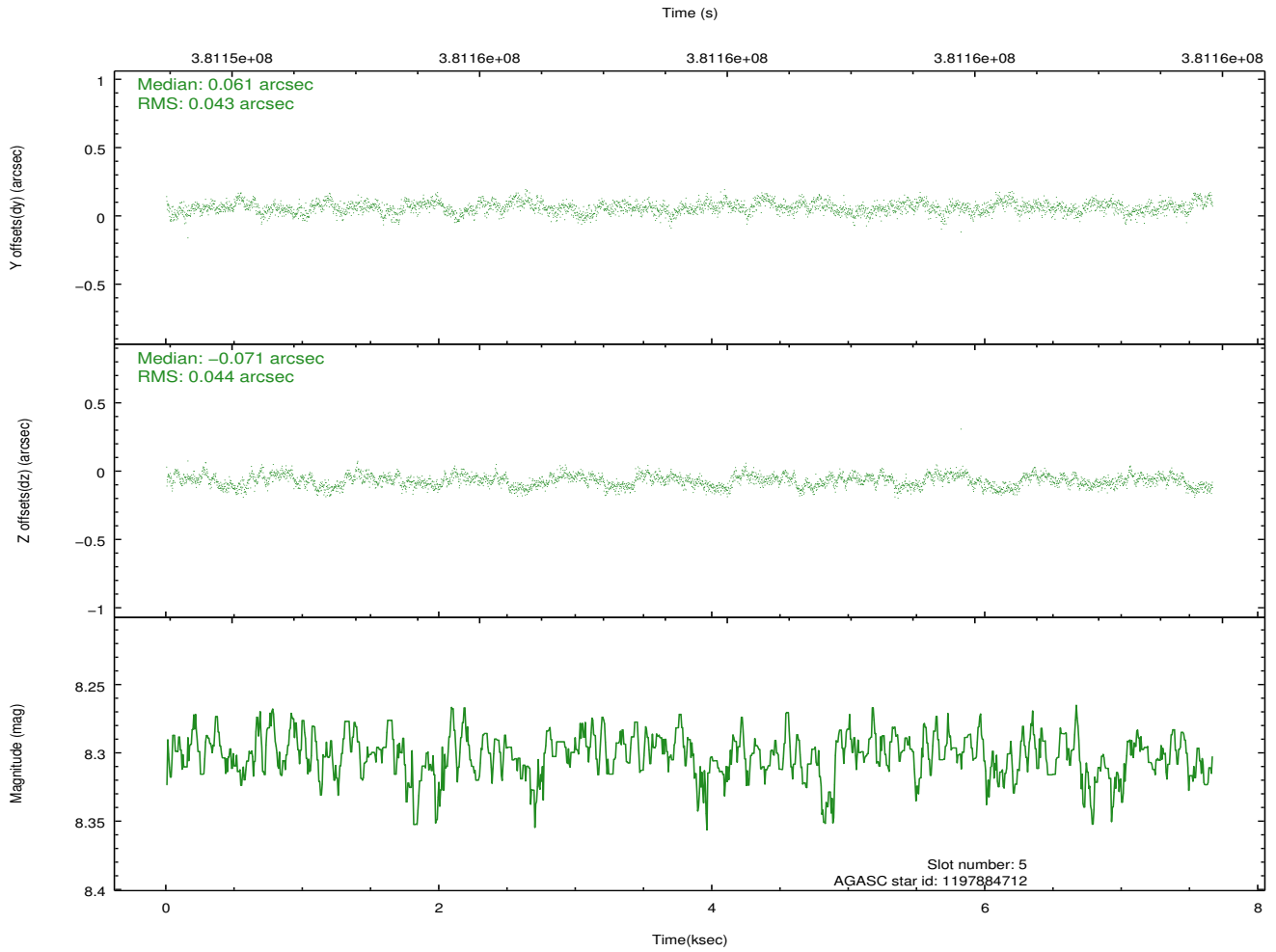
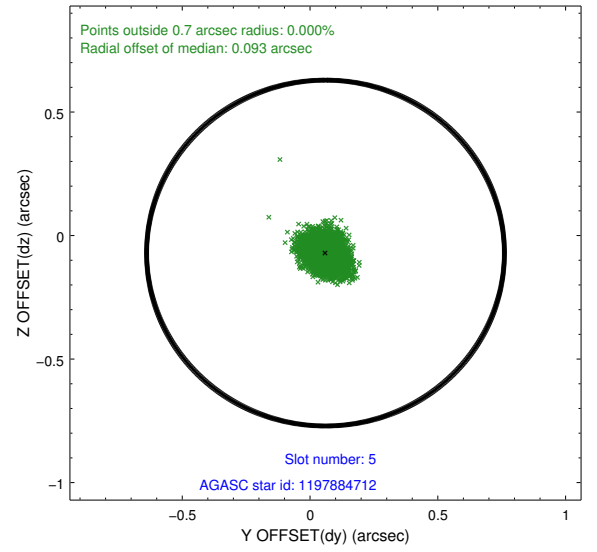
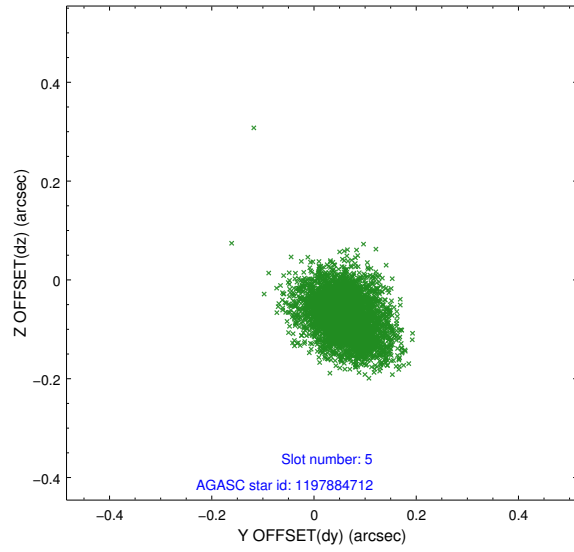
### 2.4.1 Slot 3



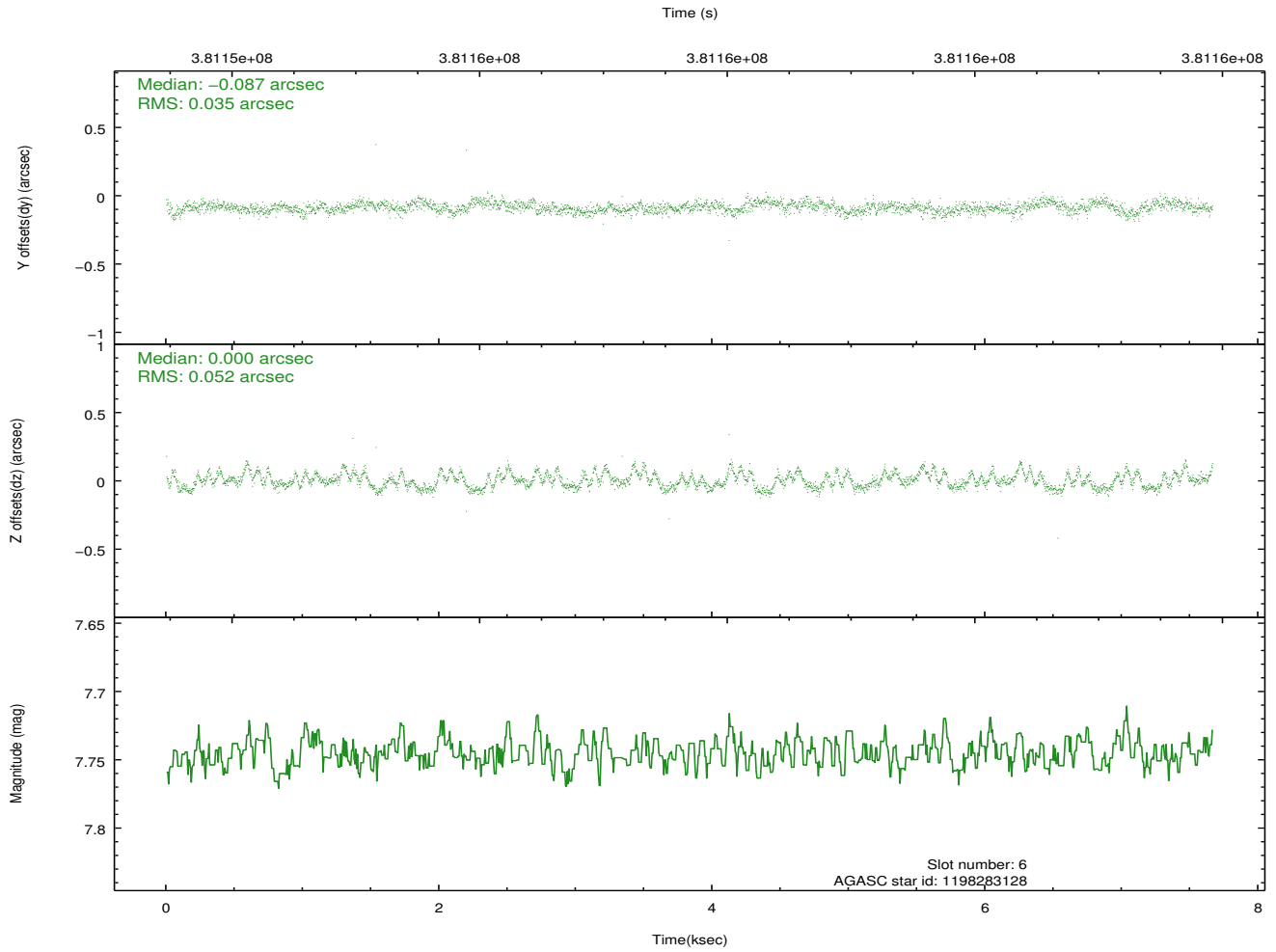
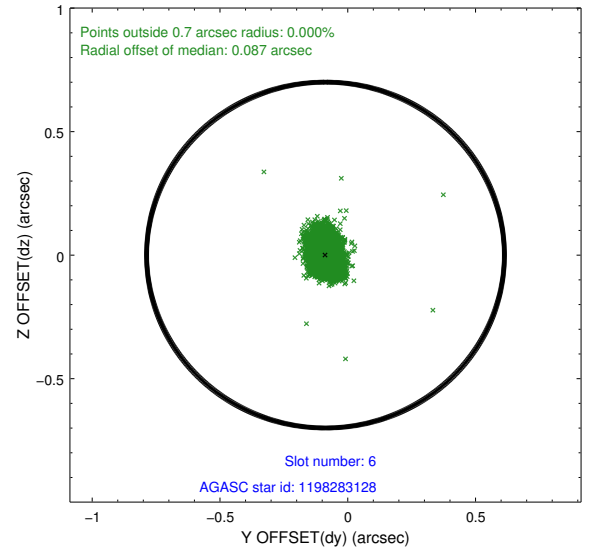
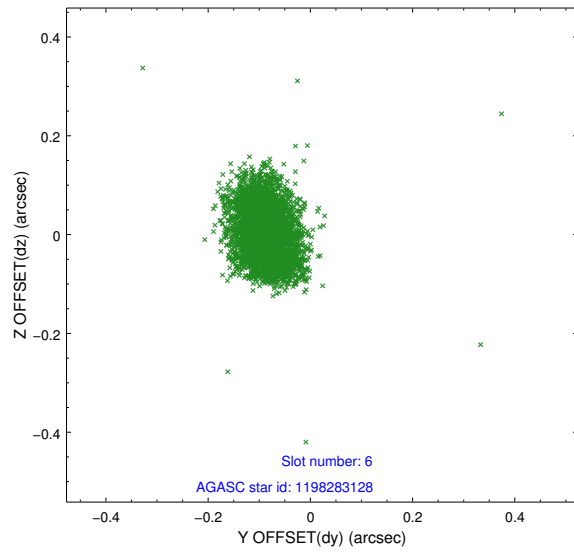
## 2.4.2 Slot 4



### 2.4.3 Slot 5

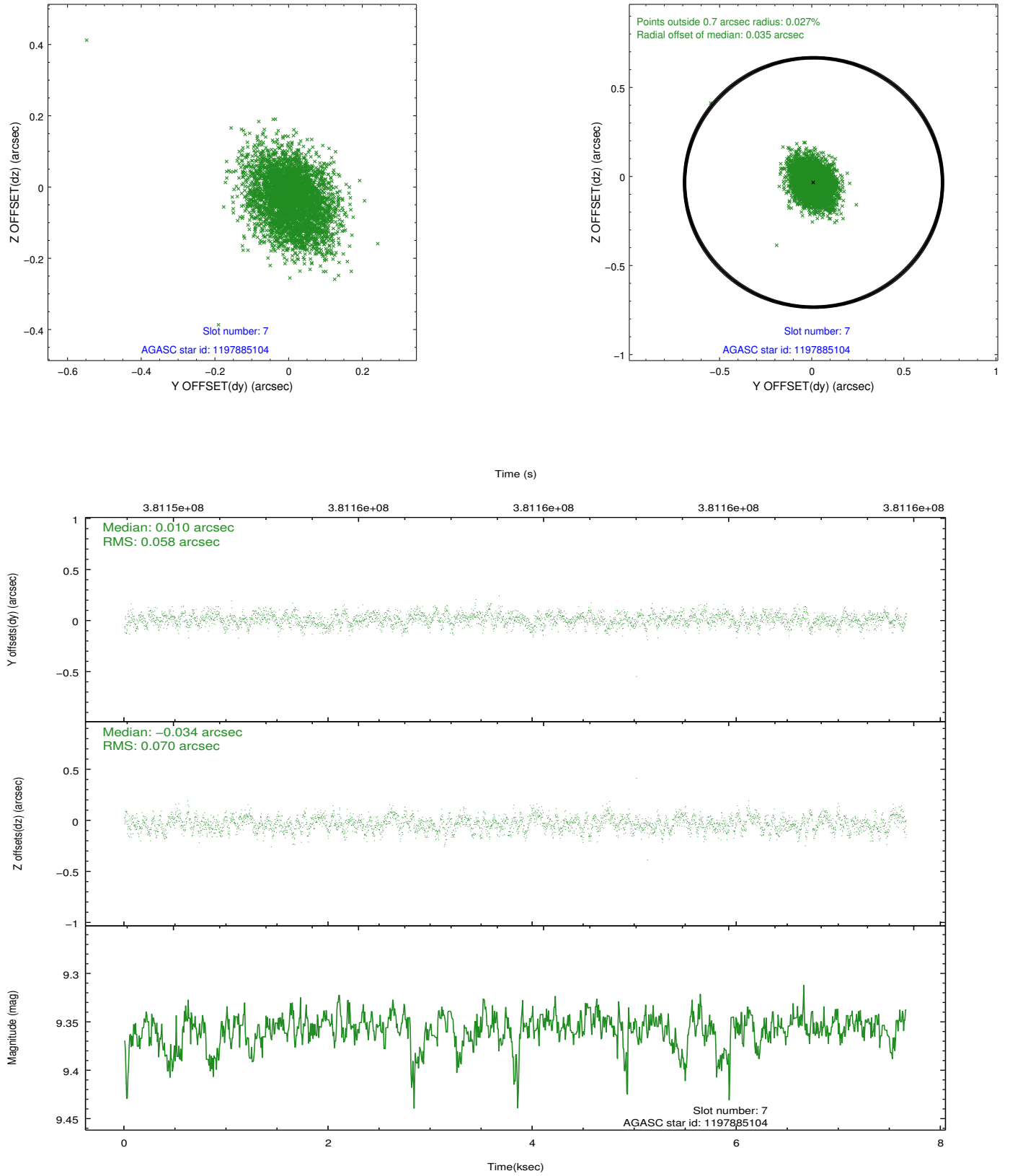


## 2.4.4 Slot 6



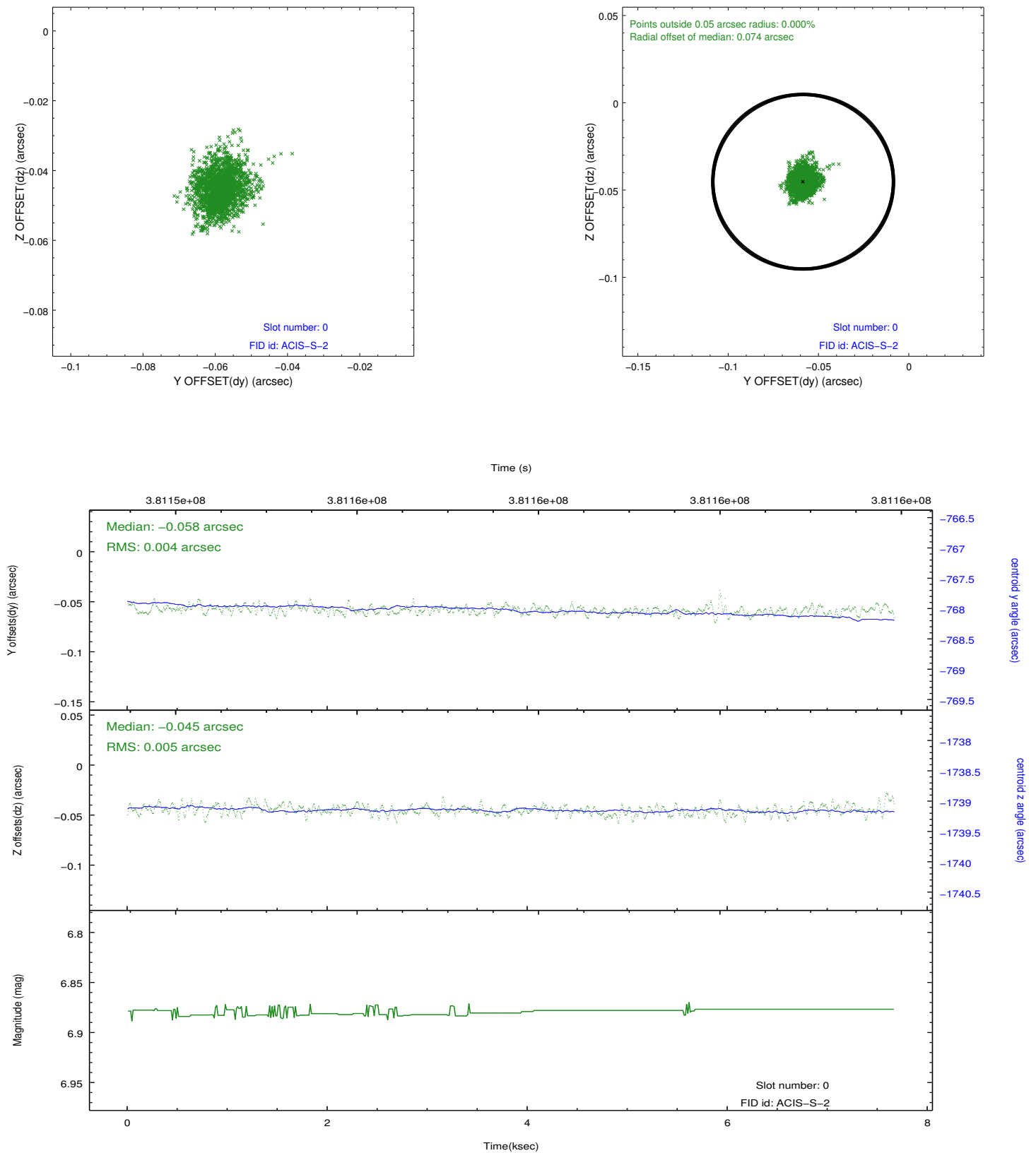


## 2.4.5 Slot 7

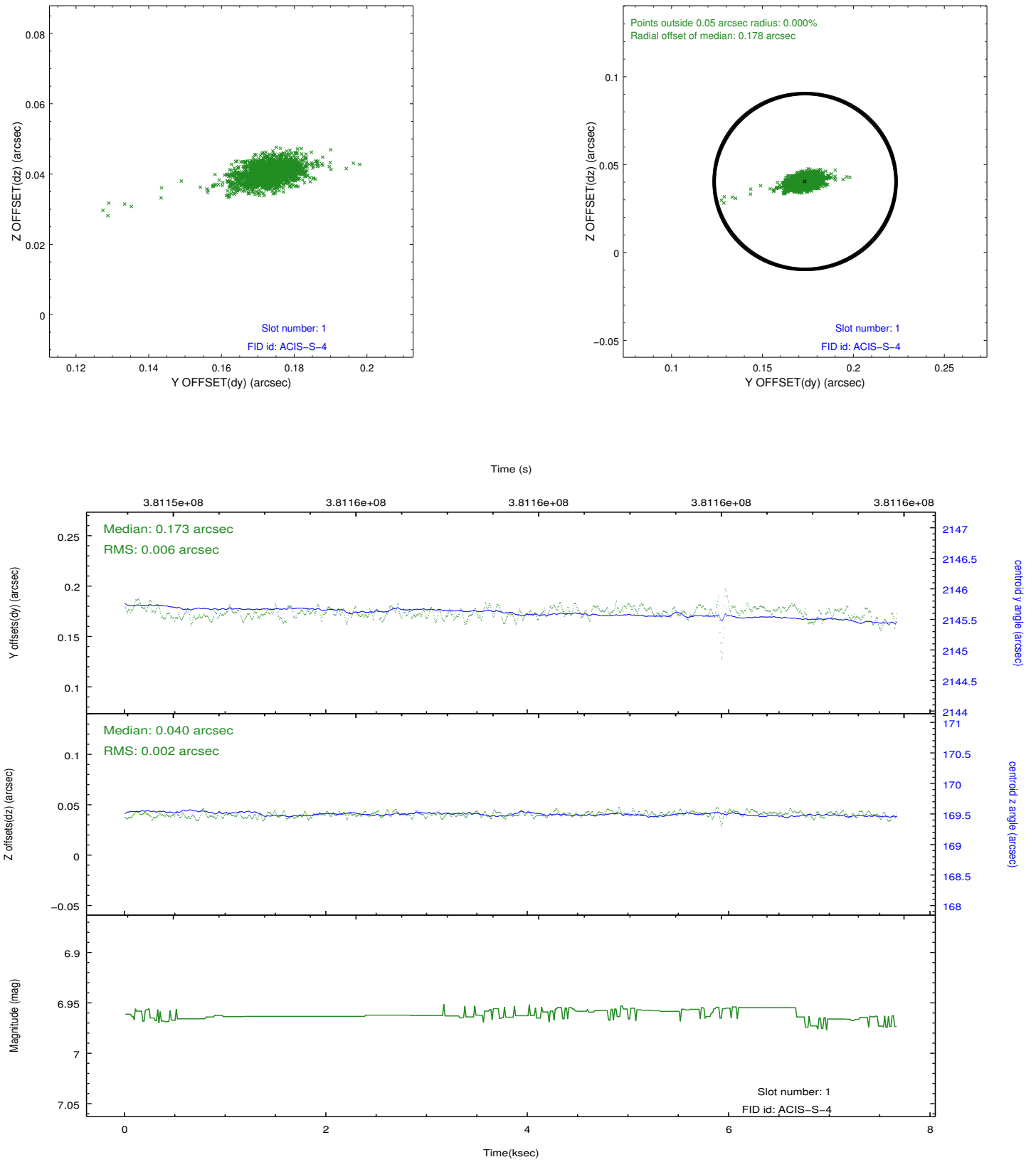


## 2.5 FID Slots

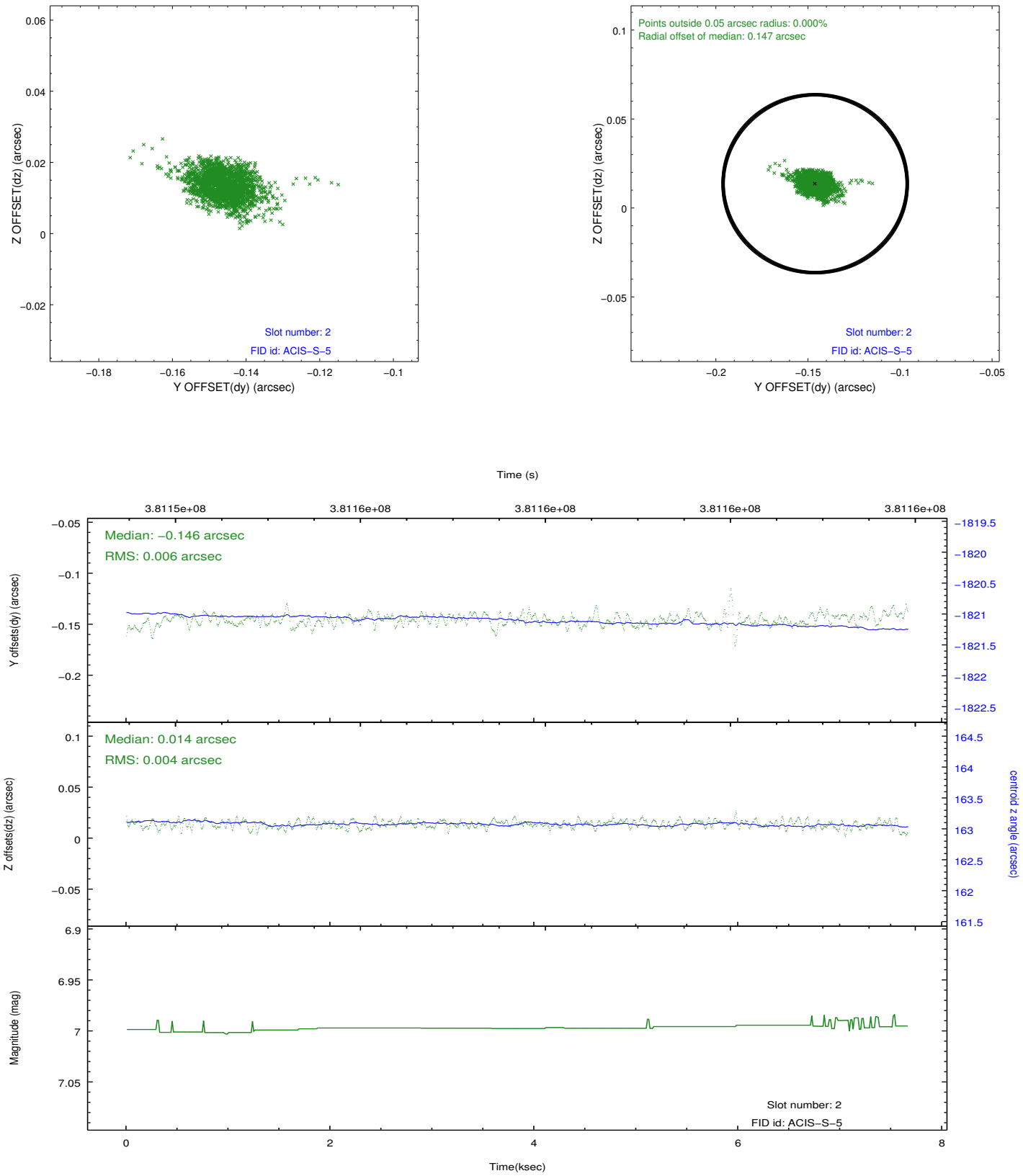
### 2.5.1 Slot 0



## 2.5.2 Slot 1



### 2.5.3 Slot 2



## A Summary

### A.1 Status

V&V Scientist	Jen Lauer
V&V Date (YYYY-MM-DD)	2012.06.26
V&V Edition	1
V&V Disposition and Status	OK
V&V Charge Time	7.6607590742111

### A.2 Comments

Target off-axis. Window constraint met.