

V&V Reference Report

L2 ASCDS Version : 8.4.5

Observation 11809 - L2 Version 2
Chandra X-Ray Center

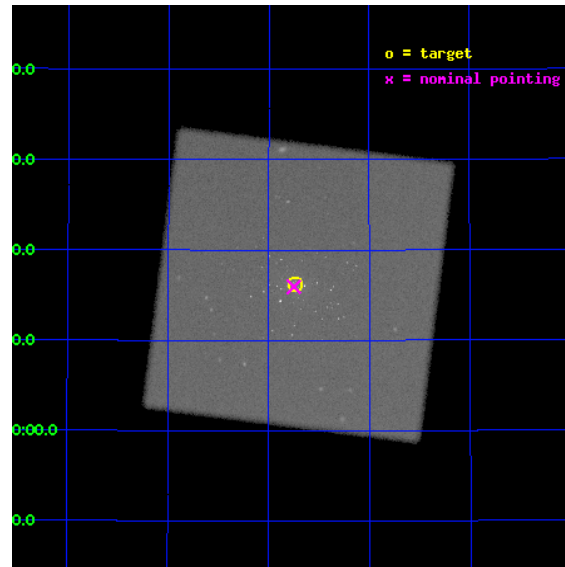
L2 Processing Date : Jun 27 2012

Contents

1	Front	2
2	OBI	3
2.1	OBI	3
2.1.1	Images	3
2.1.2	Parameters	4
2.1.3	Events	4
2.2	Compared Parameters	5
2.3	Aspect	6
2.4	Star Slots	9
2.4.1	Slot 3	9
2.4.2	Slot 4	10
2.4.3	Slot 5	11
2.4.4	Slot 6	12
2.4.5	Slot 7	13
2.5	FID Slots	14
2.5.1	Slot 0	14
2.5.2	Slot 1	15
2.5.3	Slot 2	16
A	Summary	17
A.1	Status	17
A.2	Comments	17

1 Front

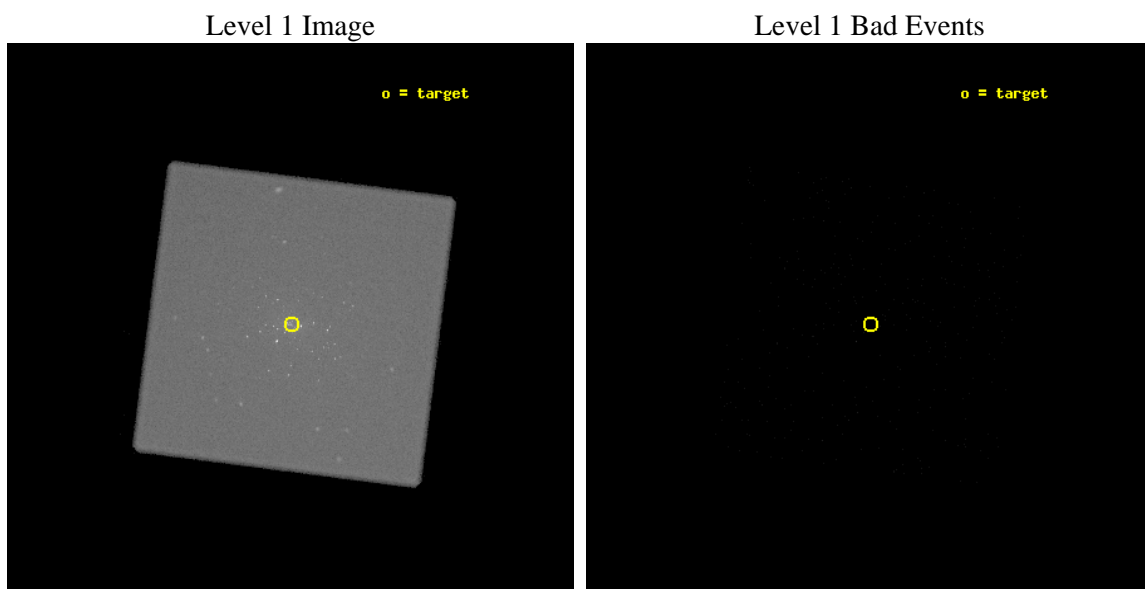
seq_num	300273	Sequence number
obs_id	11809	Observation id
title	Resolving short supersoft source states	Proposal title
observer	Dr. Peter Predehl	Principal investigator
object	M31	Source name
ra_targ	10.684583	Observer's specified target RA [deg]
dec_targ	41.269278	Observer's specified target Dec [deg]
ra_nom	10.687473210346	Nominal RA [deg]
dec_nom	41.265583789487	Nominal Dec [deg]
roll_nom	322.26555971237	Nominal Roll [deg]
revision	2	Processing version of data
ontime	18641.932195067	[s]
livetime	18415.742387396	Ontime multiplied by DTCOR
l2events	1465273	Number of level 2 events



2 OBI

2.1 OBI

2.1.1 Images



2.1.2 Parameters

obi_num	0	Obi number	sched_exp_time	18500.000000	[s] Scheduled observation exposure time
ascdsver	8.4.5	Processing system revision	ontime	18641.932195067	[s]
caldsver	4.5.0	 	l1events	2207579	Number of level 1 events
date	2012-06-27T17:31:46	Date and time of file creation			
revision	2	Processing version of data			

2.1.3 Events

Level 1 Events

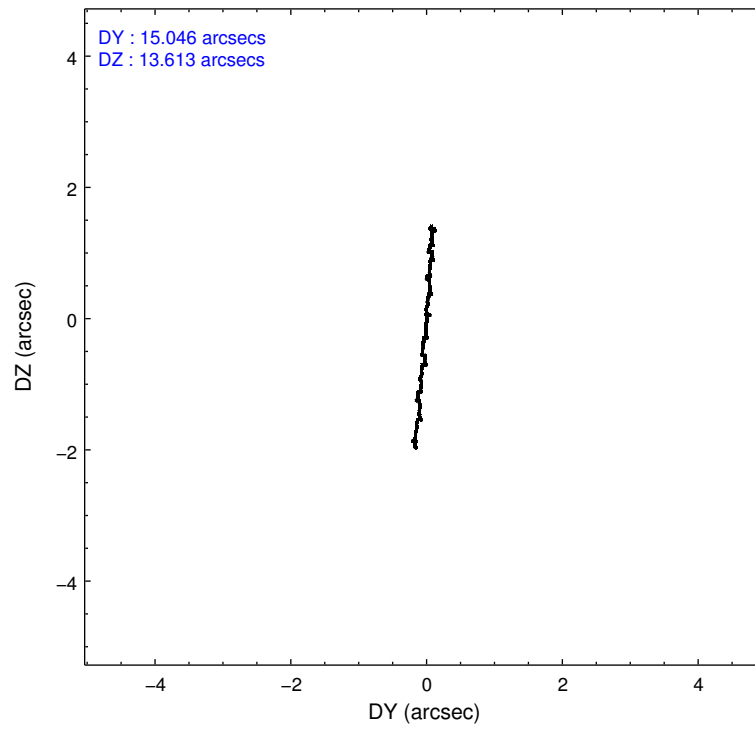
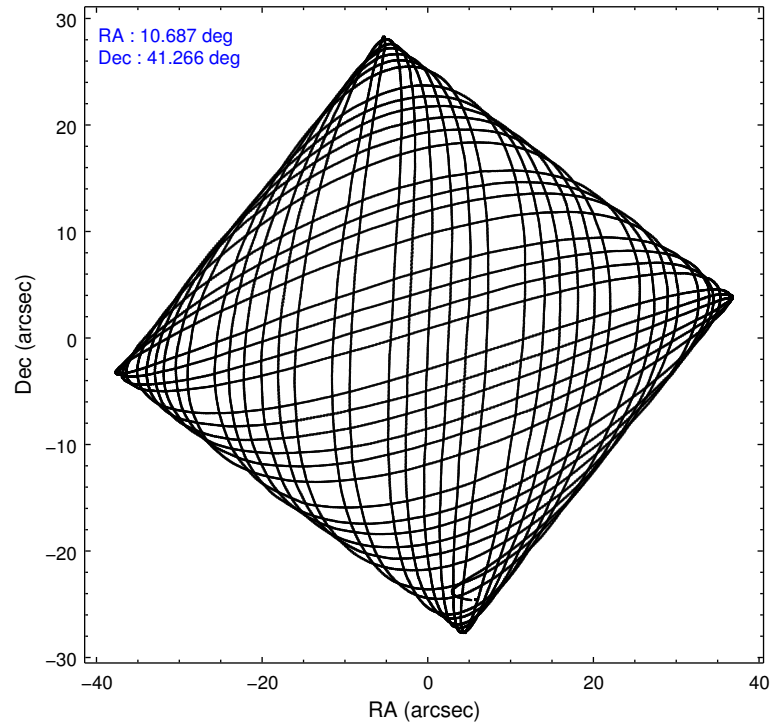
	segment 0
level 1 events	2207579
rejected events	118785
rejected %	5%

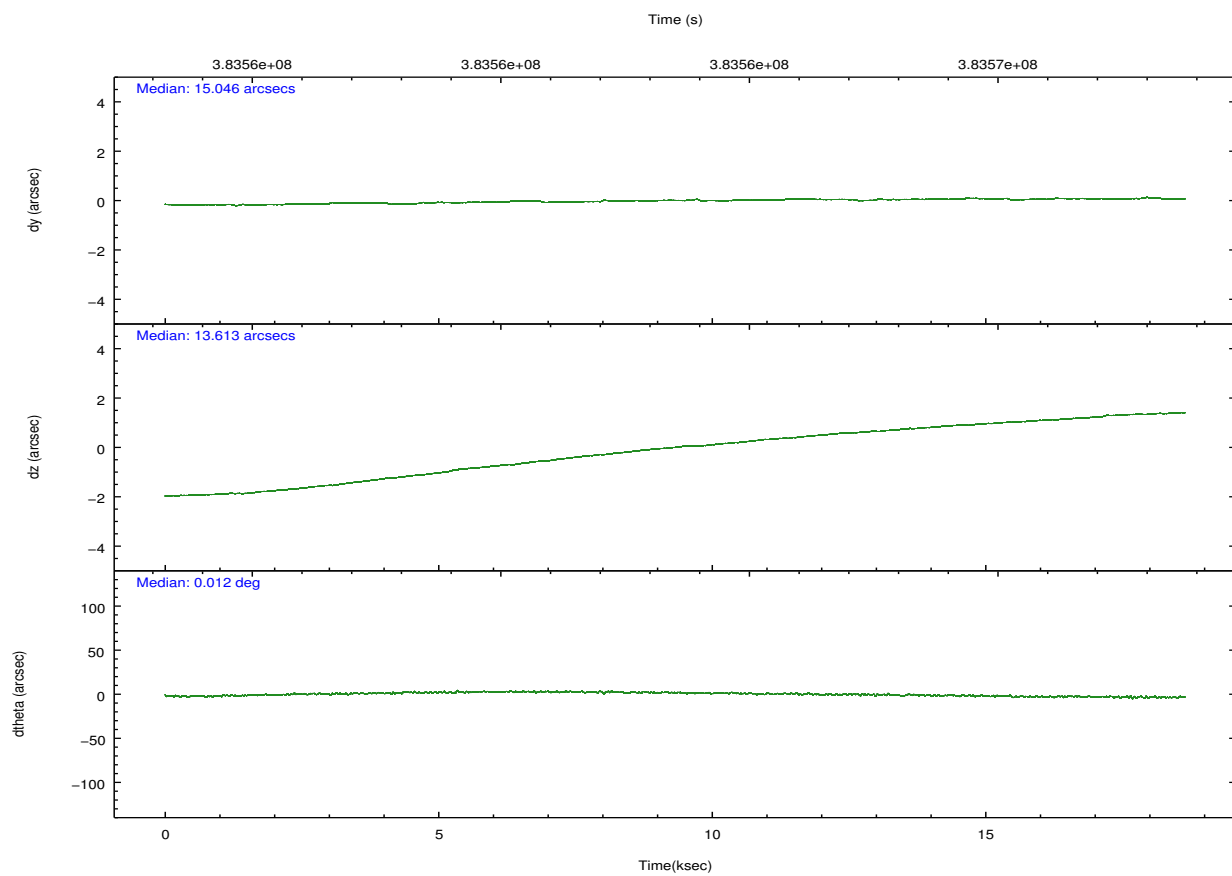
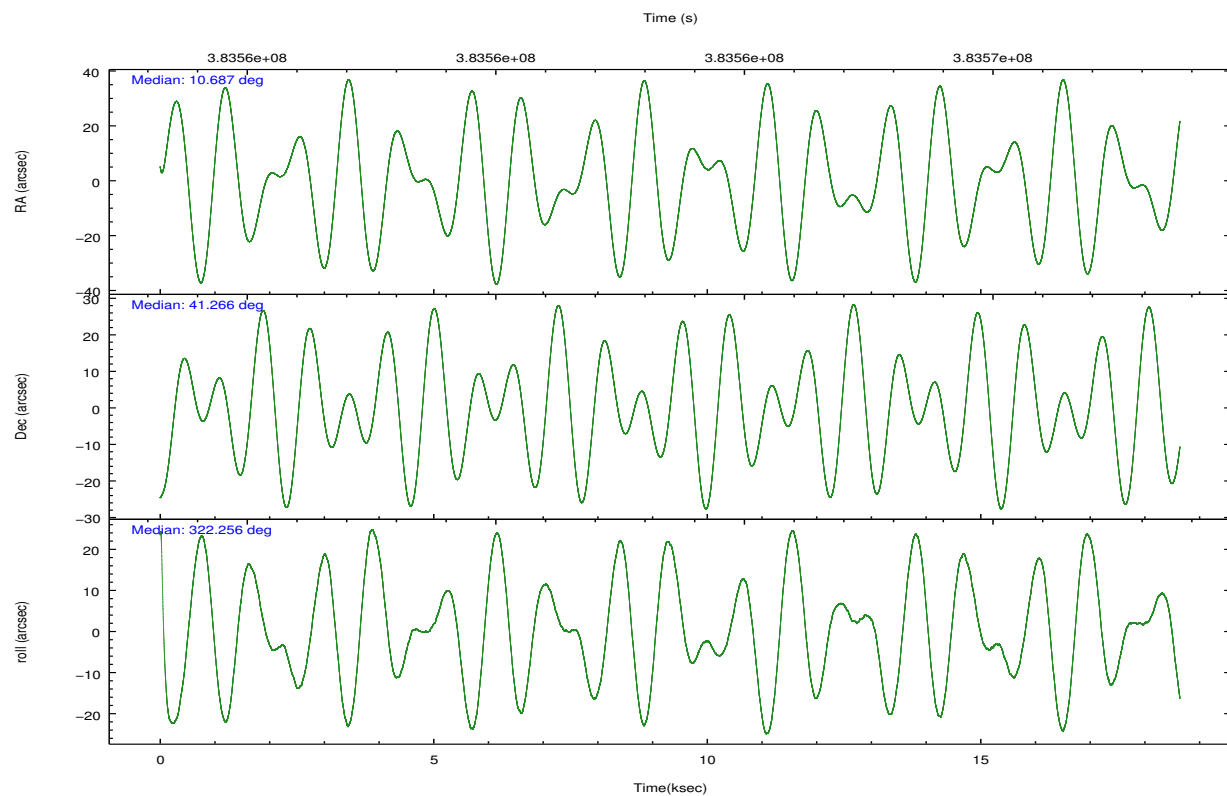
2.2 Compared Parameters

Parameter	Planned	Actual
Instrument	HRC	HRC
Detector	HRC-I	HRC-I
Grating	NONE	NONE
Data mode	OBSERVING	OBSERVING
Observation mode	POINTING	POINTING
[deg] Pointing RA	10.651482	10.68747321034564
[deg] Pointing Dec	41.268669	41.26558378948737
[deg] Pointing Roll	322.384763	322.2655597123739
[mm] SIM focus pos	-1.040293	-1.038866356238299
[mm] SIM defocus	0	0.001426264420575141
[mm] SIM translation stage pos	126.985494	126.9829799899862
[mm] SIM translation stage offset	0	0.002508901615314585
[s] Observation start time (MET)	383554317.184000	383553134.7329
Observation start date	2010-02-26T06:50:51	2010-02-26T06:32:14
[s] Observation end time (MET)	383572817.184000	383574058.05897
Observation end date	2010-02-26T11:59:11	2010-02-26T12:20:58

Parameter	Planned	Actual
Obspar format version number	7	7
Obspar file type	PREDICTED	ACTUAL
Obspar update status	NONE	UPDATED

2.3 Aspect



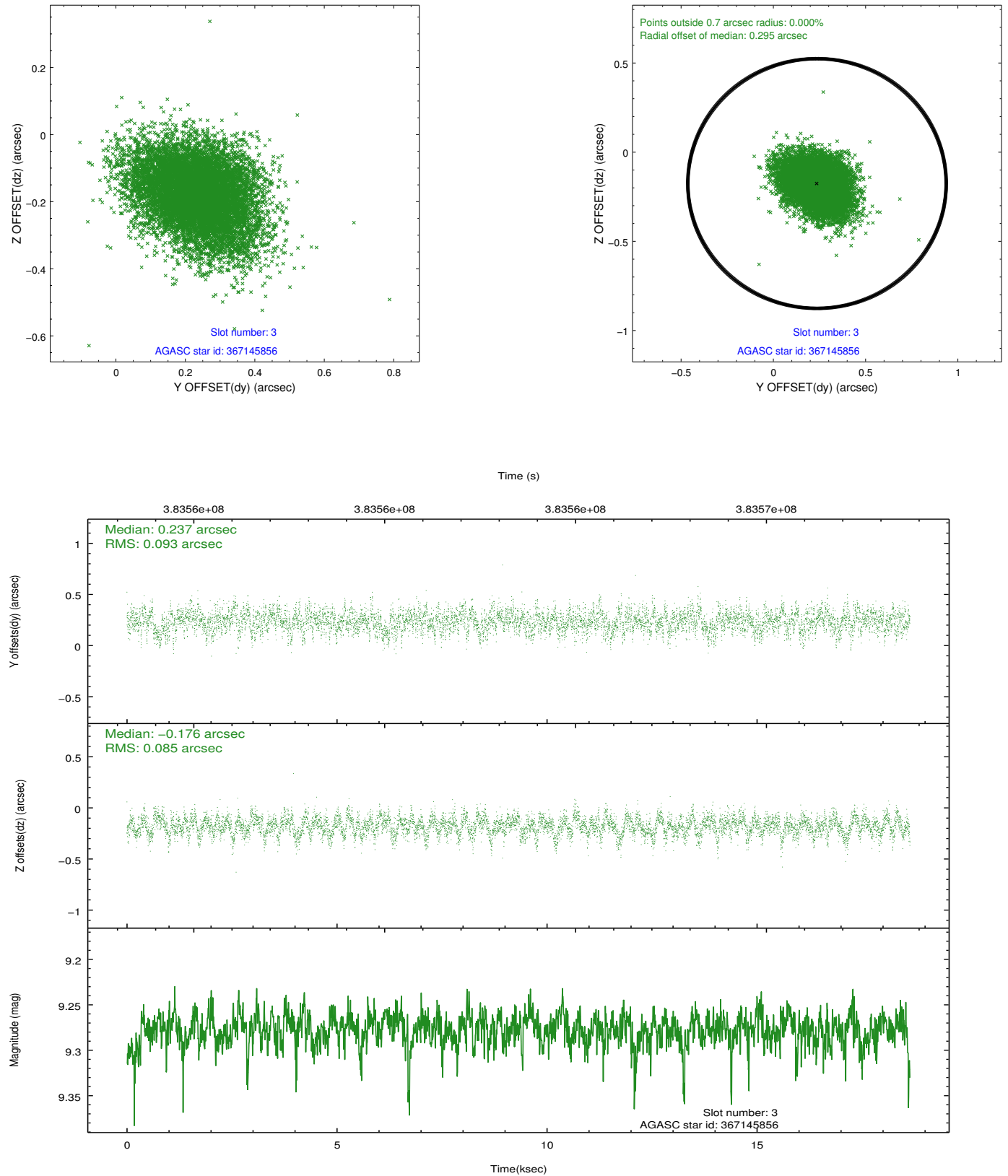


Slot Statistics

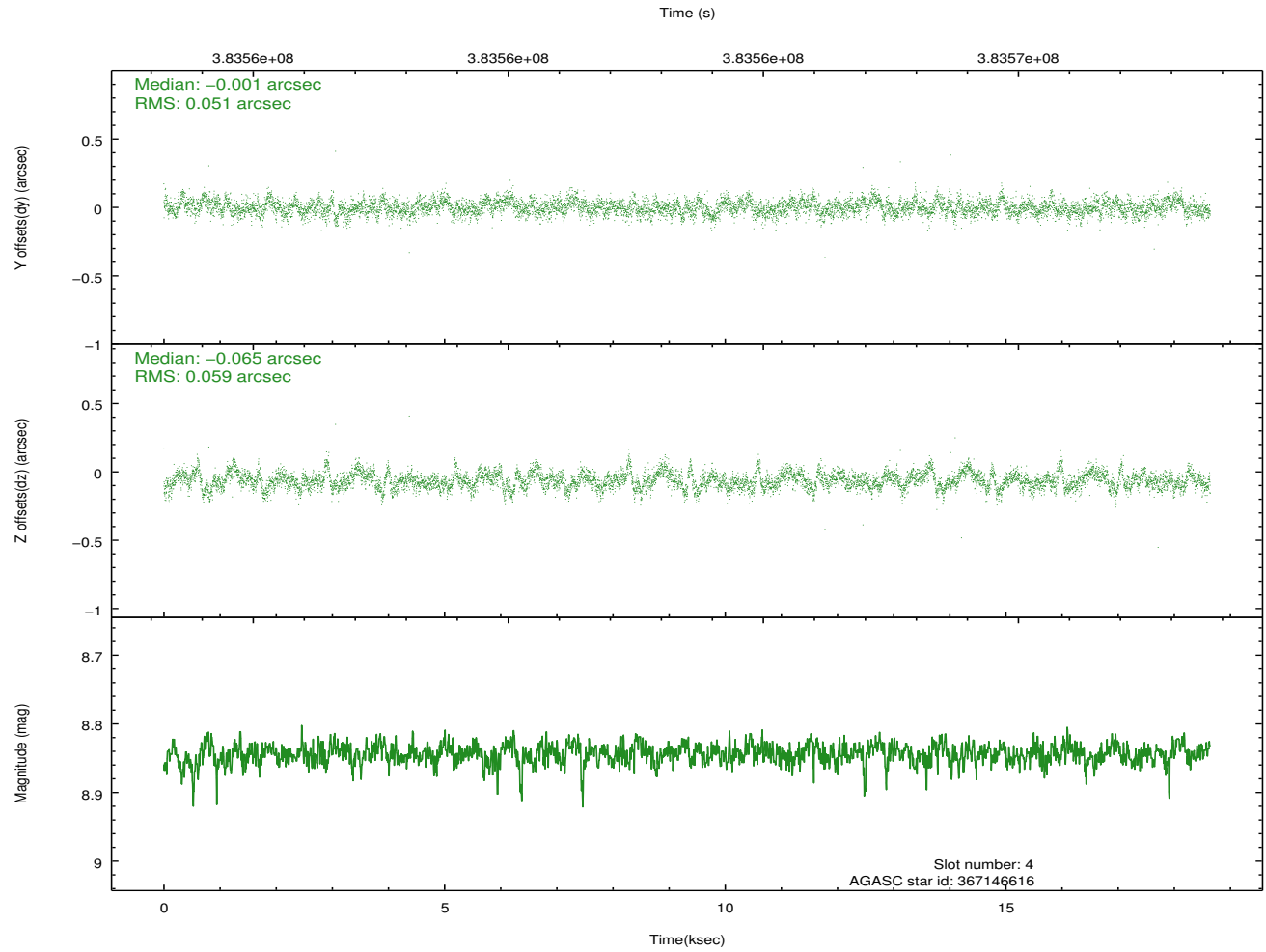
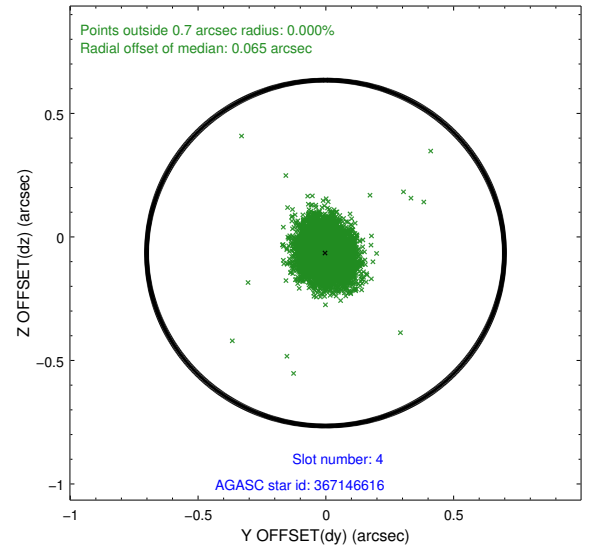
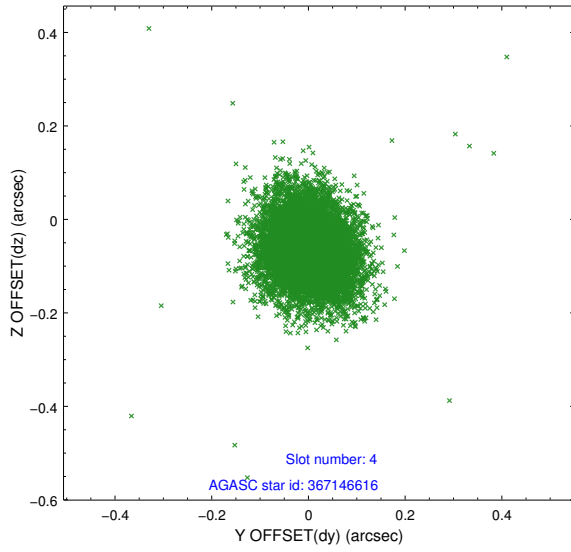
slot	status	id	mag	n_pts	med_dy	med_dz	dr1	dr2	ra	dec	mean_y	mean_z
0	FID	HRC-I-1	6.97	4547	-0.117	-0.024	0.025	0.035	0.000000	0.000000	-771.02	-1301.47
1	FID	HRC-I-2	7.01	4546	0.197	-0.078	0.021	0.037	0.000000	0.000000	841.75	-1303.47
2	FID	HRC-I-4	6.99	4546	0.037	0.002	0.019	0.026	0.000000	0.000000	1272.24	1000.32
3	GUIDE	367145856	9.28	9089	0.237	-0.176	0.133	0.220	10.744946	40.402085	2107.80	-2314.65
4	GUIDE	367146616	8.84	9088	-0.001	-0.065	0.081	0.135	11.418645	41.190163	1813.45	1052.10
5	GUIDE	367148872	7.22	9095	-0.065	-0.010	0.073	0.118	10.505940	40.688258	961.38	-1897.51
6	GUIDE	367663272	9.29	9077	-0.018	0.184	0.091	0.149	10.656279	41.699429	-936.63	1235.45
7	GUIDE	367674552	8.84	9088	-0.152	0.068	0.098	0.159	11.016238	41.570845	112.81	1463.36

2.4 Star Slots

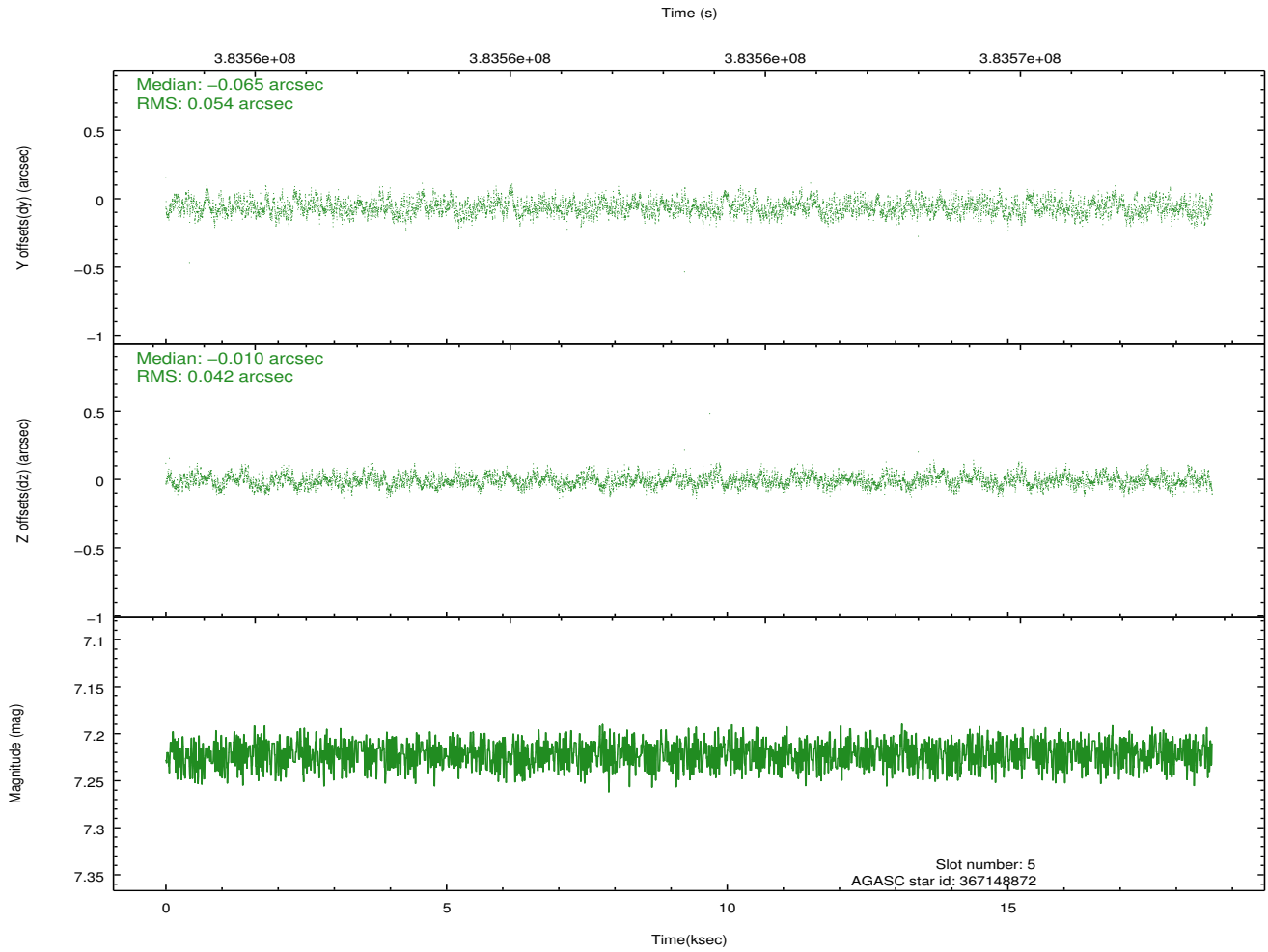
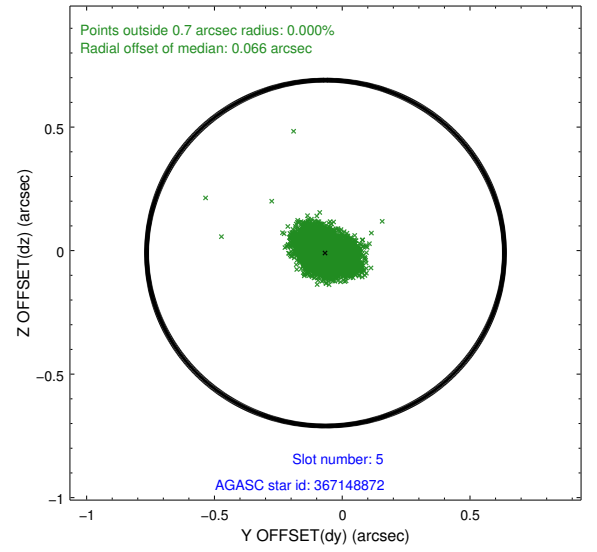
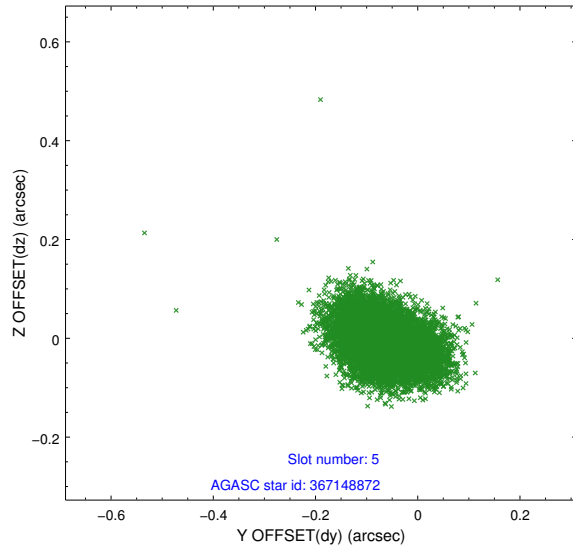
2.4.1 Slot 3



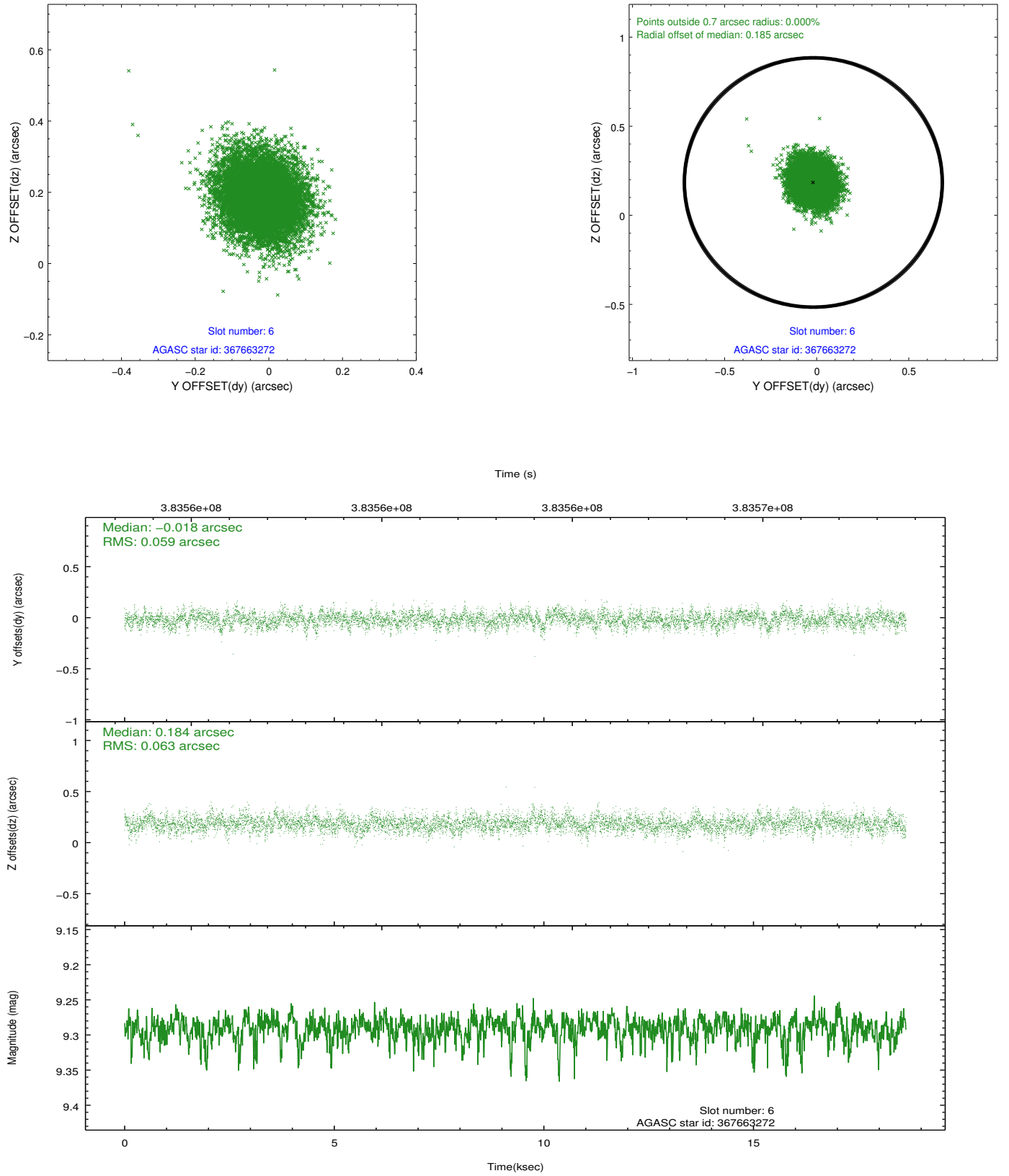
2.4.2 Slot 4



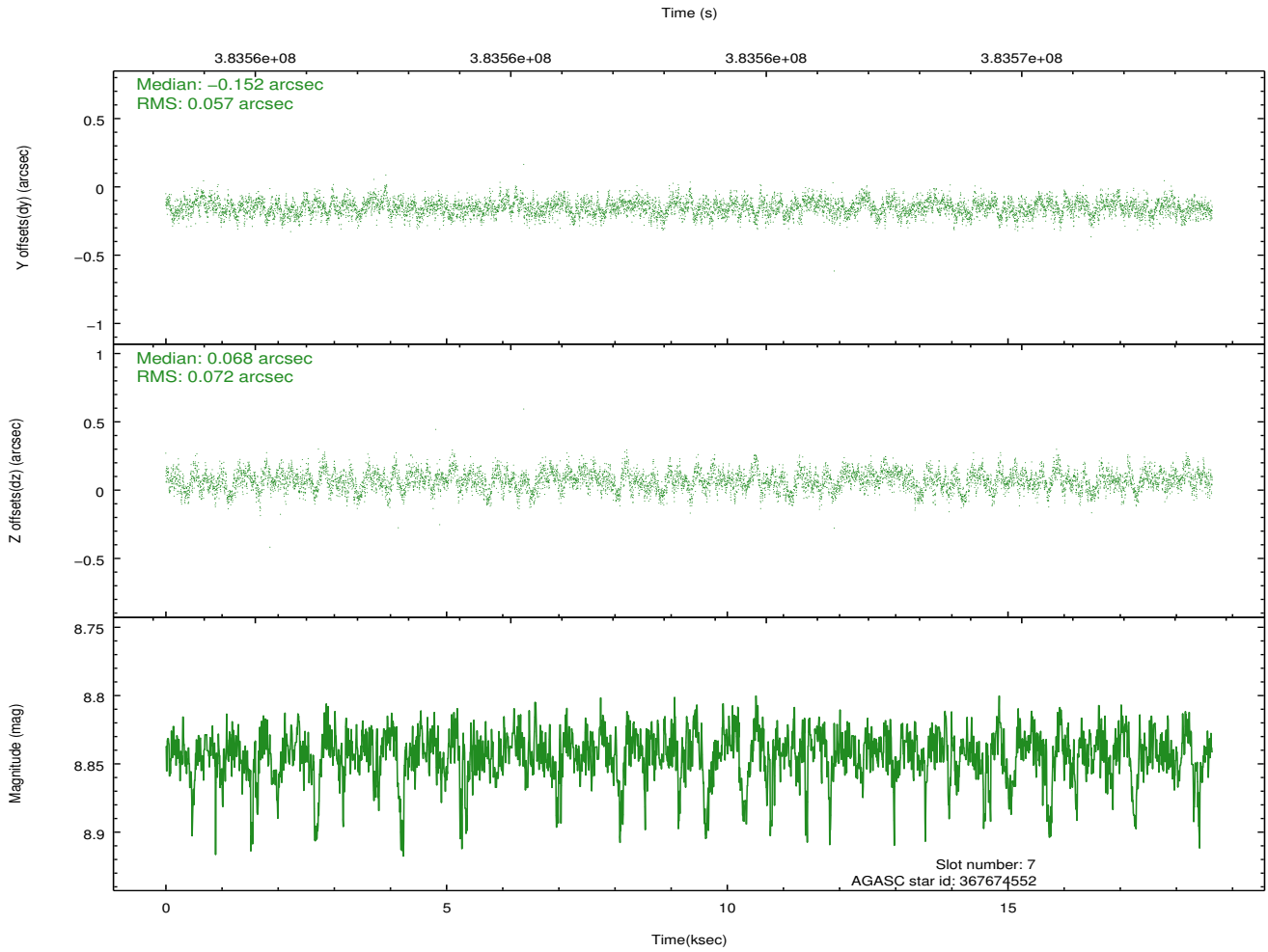
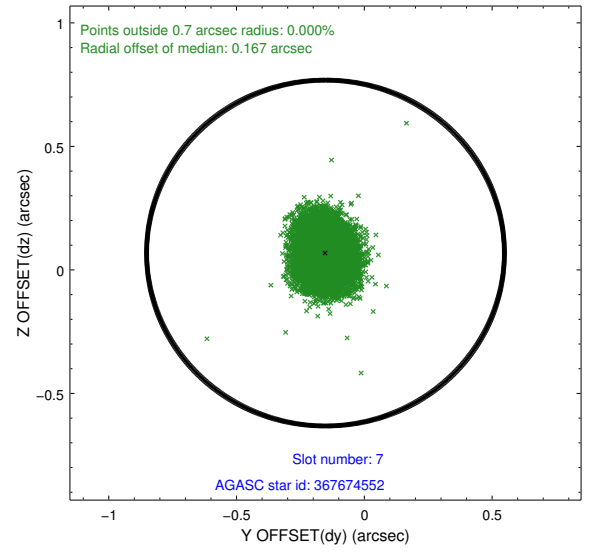
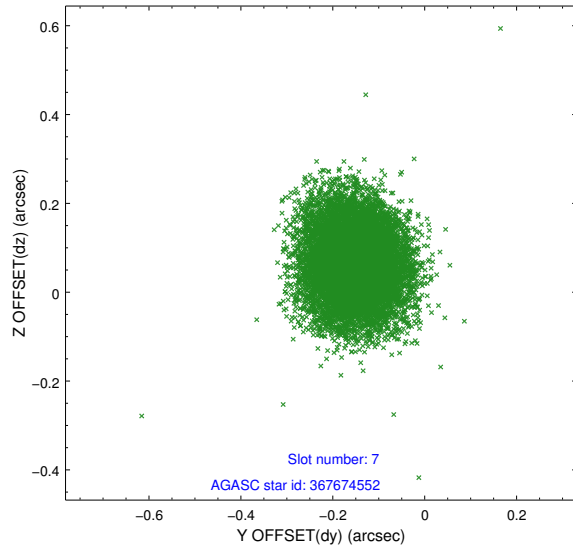
2.4.3 Slot 5



2.4.4 Slot 6

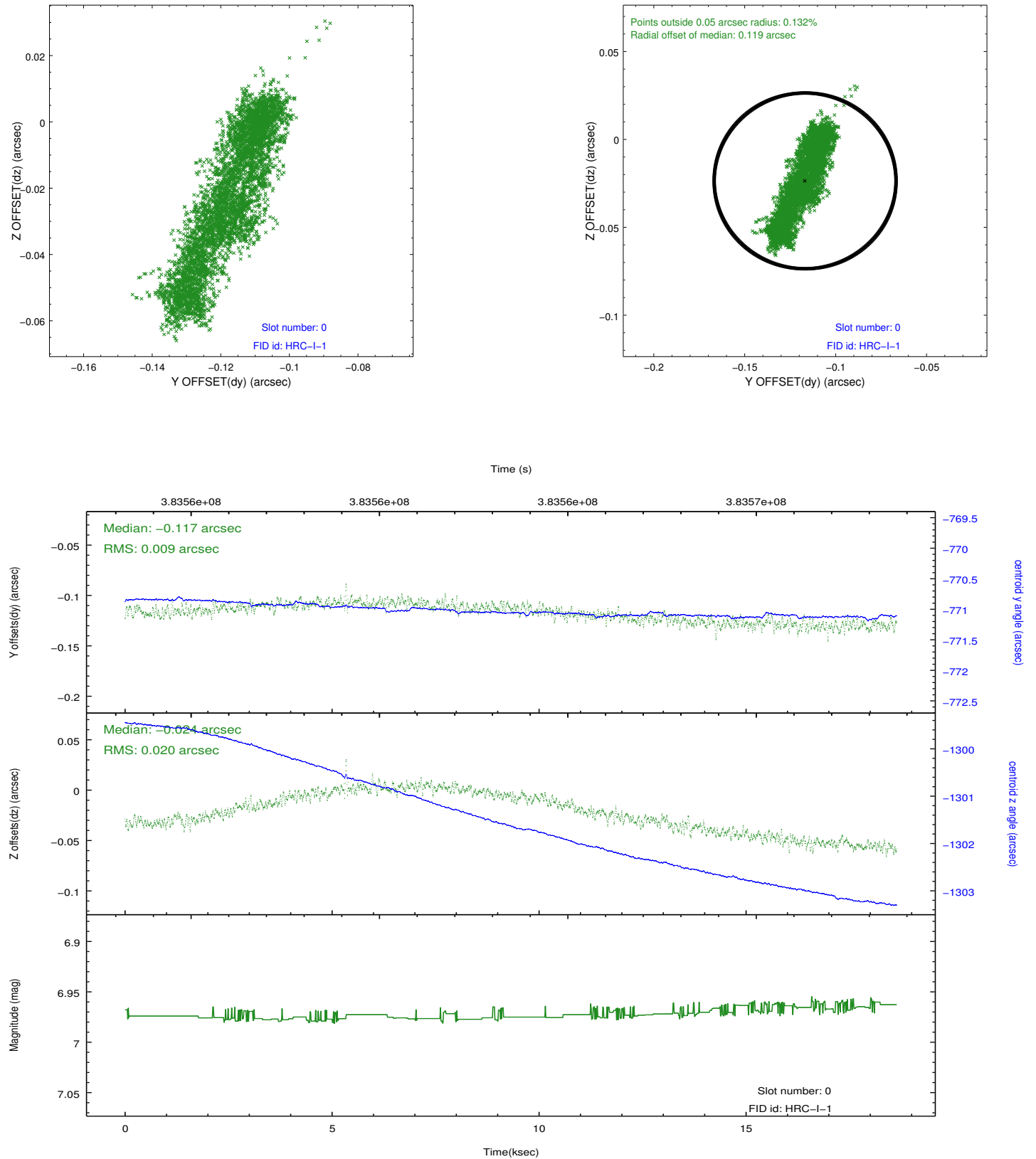


2.4.5 Slot 7

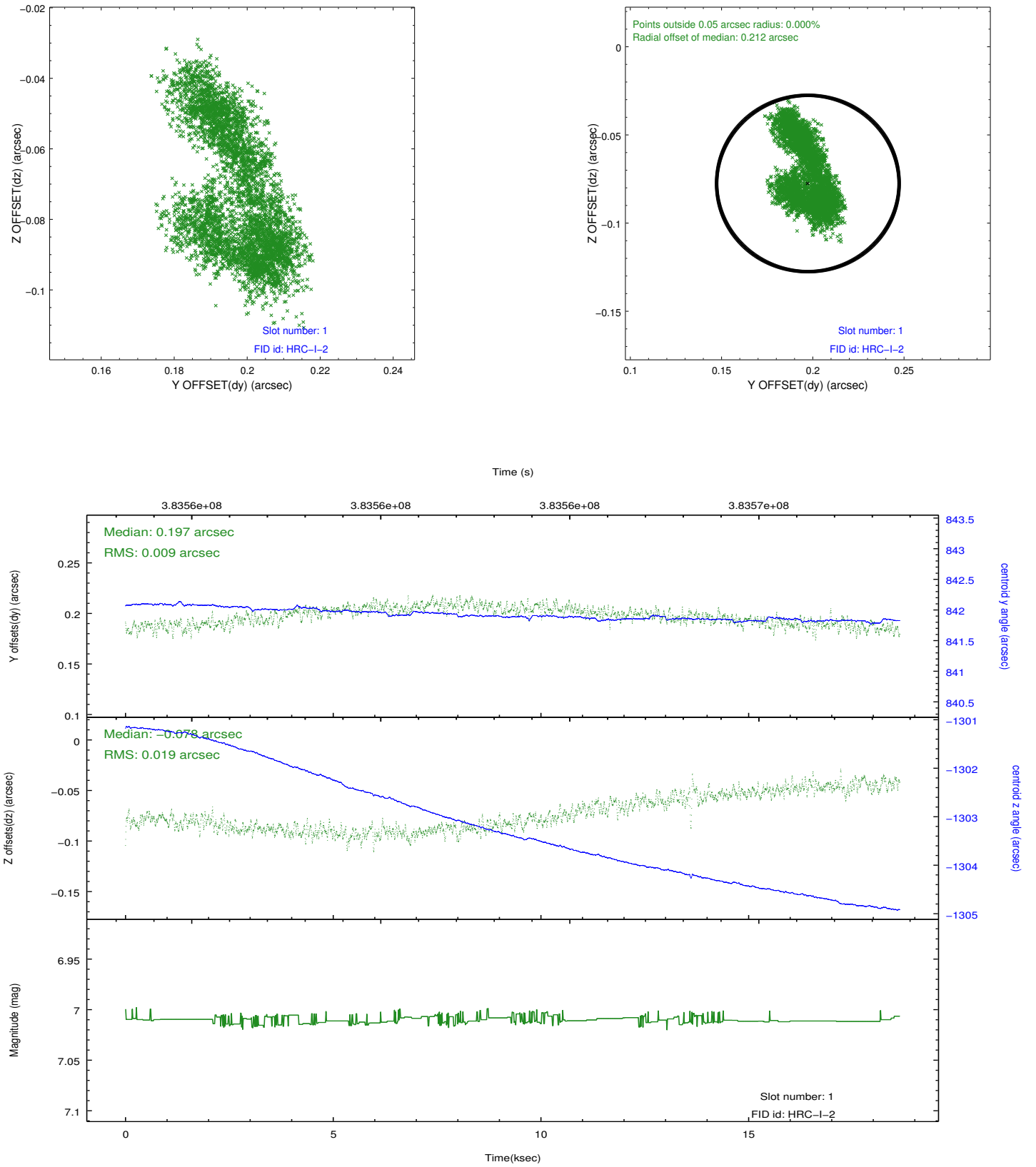


2.5 FID Slots

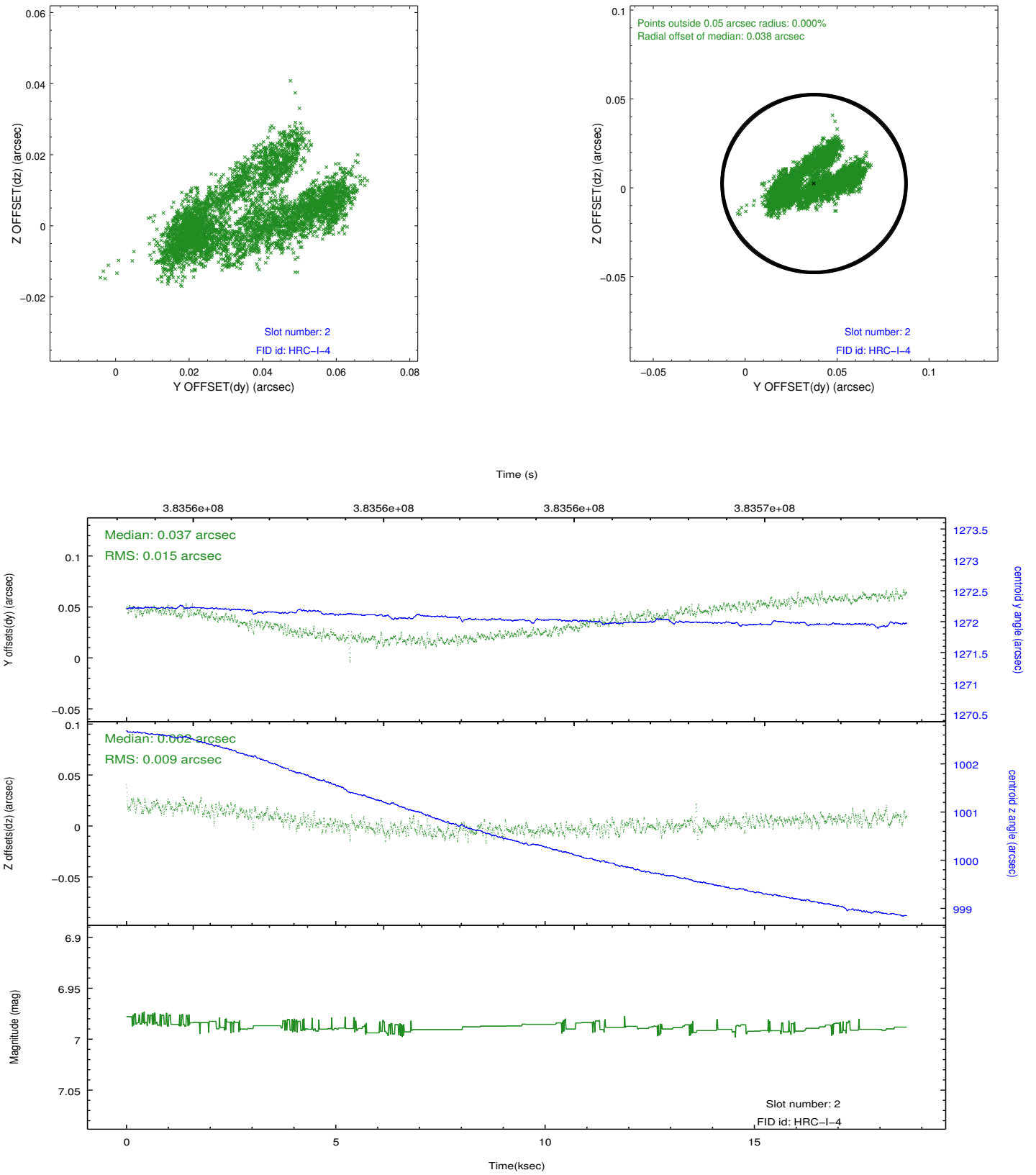
2.5.1 Slot 0



2.5.2 Slot 1



2.5.3 Slot 2



A Summary

A.1 Status

V&V Scientist	Beth Sundheim
V&V Date (YYYY-MM-DD)	2012.07.03
V&V Edition	1
V&V Disposition and Status	OK
V&V Charge Time	18.641675944865

A.2 Comments