

V&V Reference Report

L2 ASCDS Version : 8.4.5

Observation 11339 - L2 Version 2
Chandra X-Ray Center

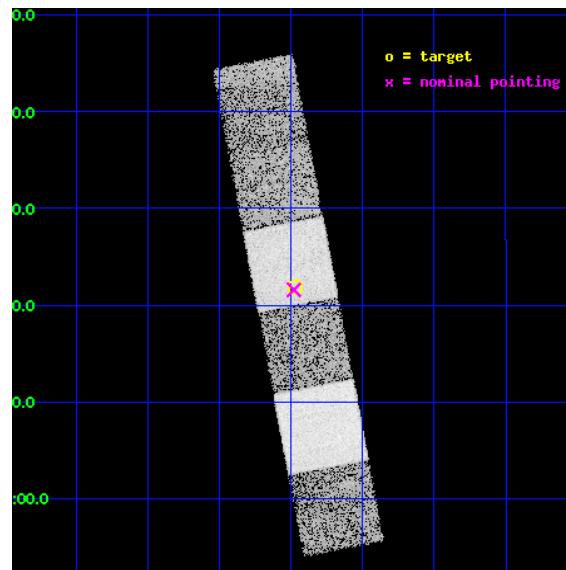
L2 Processing Date : Jul 2 2012

Contents

1	Front	2
2	OBI	3
2.1	OBI	3
2.1.1	Images	3
2.1.2	Bias	3
2.1.3	Parameters	4
2.1.4	Events	4
2.2	Compared Parameters	5
2.3	Aspect	6
2.4	Star Slots	9
2.4.1	Slot 3	9
2.4.2	Slot 4	10
2.4.3	Slot 5	11
2.4.4	Slot 6	12
2.4.5	Slot 7	13
2.5	FID Slots	14
2.5.1	Slot 0	14
2.5.2	Slot 1	15
2.5.3	Slot 2	16
A	Summary	17
A.1	Status	17
A.2	Comments	17

1 Front

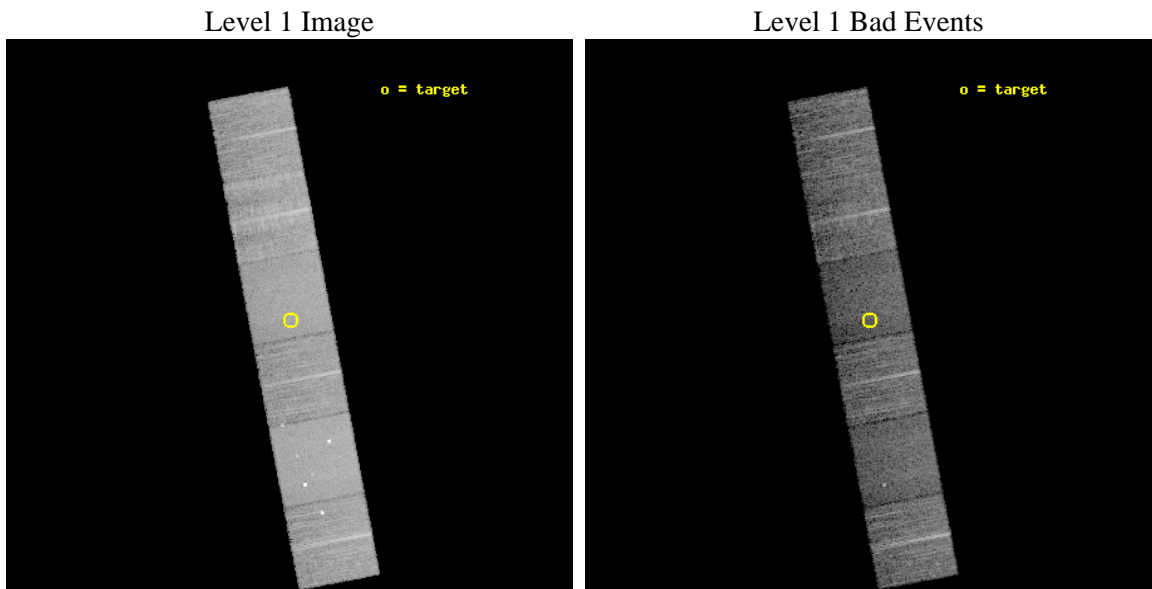
seq_num	600858	Sequence number
obs_id	11339	Observation id
title	Accretion onto nuclear black holes in early type galaxies: comparing field vs. clusters	Proposal title
observer	Elena Gallo	Principal investigator
object	PGC1192611	Source name
dtcycle	0	
cycle	P	events from which exps? Prim/Second/Both
ra_targ	225.618	Observer's specified target RA [deg]
dec_targ	1.36422	Observer's specified target Dec [deg]
ra_nom	225.61973553649	Nominal RA [deg]
dec_nom	1.3596577362856	Nominal Dec [deg]
roll_nom	259.22671844502	Nominal Roll [deg]
revision	2	Processing version of data
ontime	8643.1999678612	Sum of GTIs [s]
livetime	8533.7545655579	Livetime [s]
ontime4	8643.1999678612	Sum of GTIs [s]
ontime5	8643.1999678612	Sum of GTIs [s]
ontime6	8643.1999678612	Sum of GTIs [s]
ontime7	8643.1999678612	Sum of GTIs [s]
ontime8	8643.1999678612	Sum of GTIs [s]
ontime9	8636.7181267738	Sum of GTIs [s]
l2events	105315	Number of level 2 events



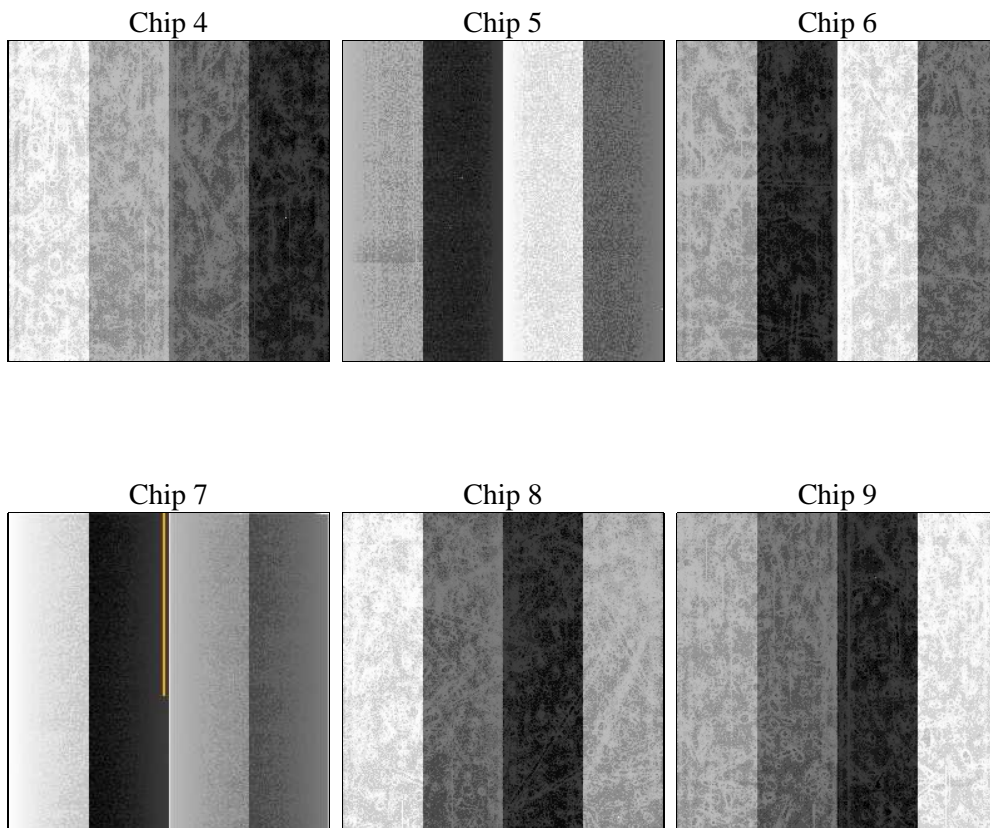
2 OBI

2.1 OBI

2.1.1 Images



2.1.2 Bias



2.1.3 Parameters

obi_num	0	Obi number	sched_exp_time	8600.000000	[s] Scheduled observation exposure time
ascdsver	8.4.5	Processing system revision	ontime	8643.1999678612	Sum of GTIs [s]
caldsver	4.5.0	 	ontime4	8643.1999678612	Sum of GTIs [s]
date	2012-07-02T05:40:48	Date and time of file creation	ontime5	8643.1999678612	Sum of GTIs [s]
revision	2	Processing version of data	ontime6	8643.1999678612	Sum of GTIs [s]
			ontime7	8643.1999678612	Sum of GTIs [s]
			ontime8	8643.1999678612	Sum of GTIs [s]
			ontime9	8636.7181267738	Sum of GTIs [s]
			l1events	467324	Number of level 1 events

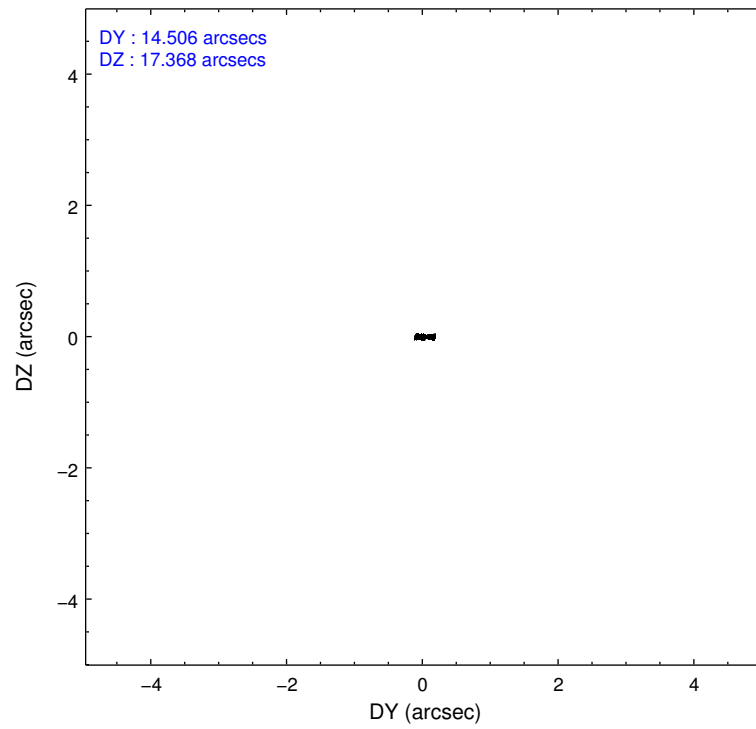
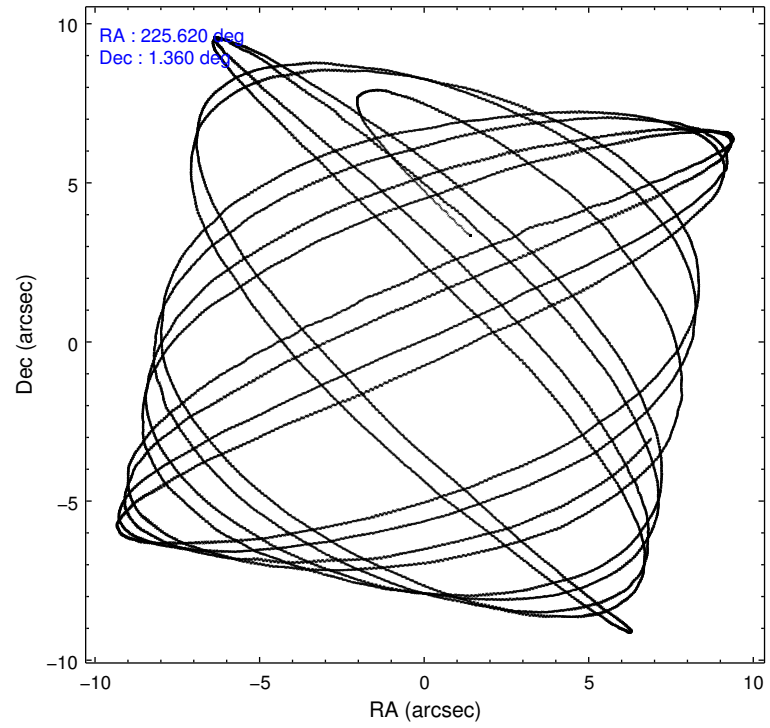
2.1.4 Events

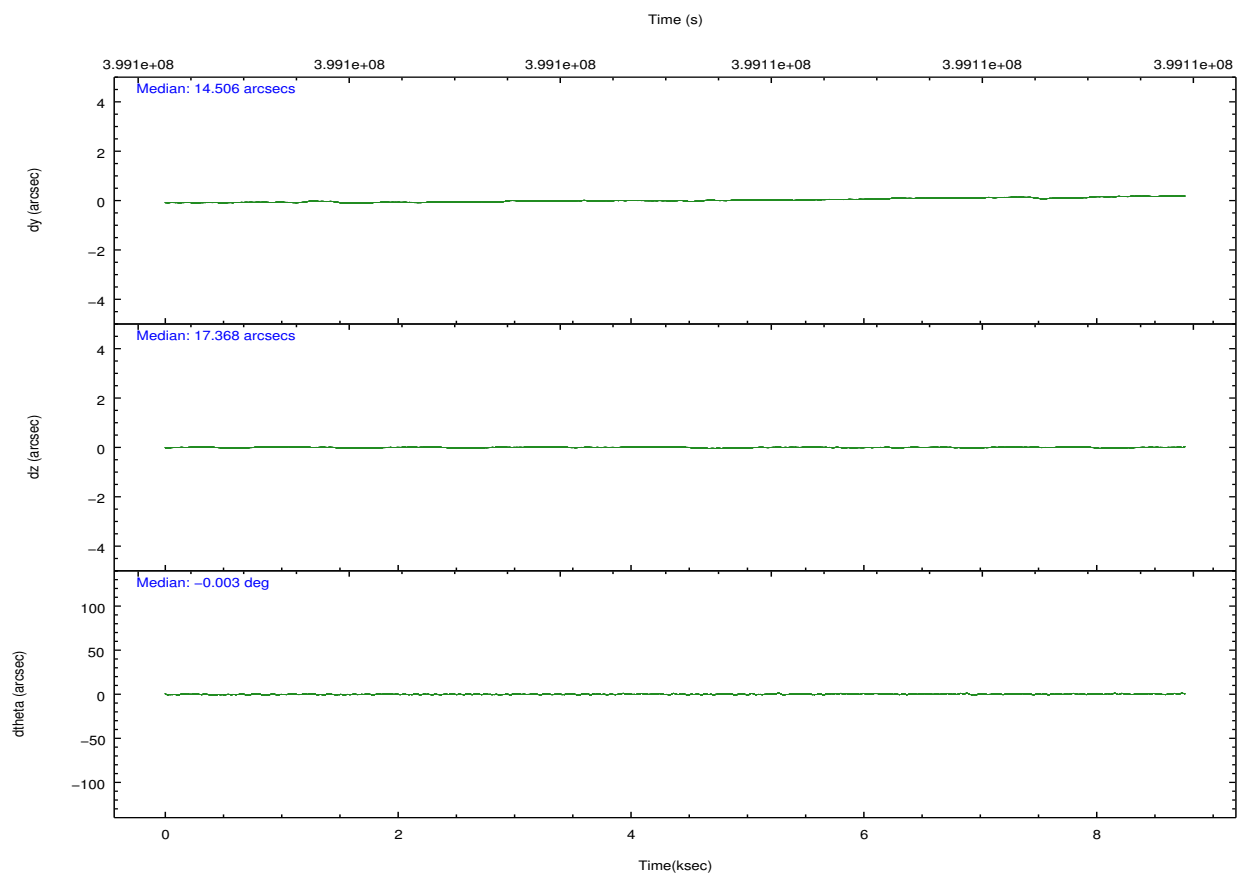
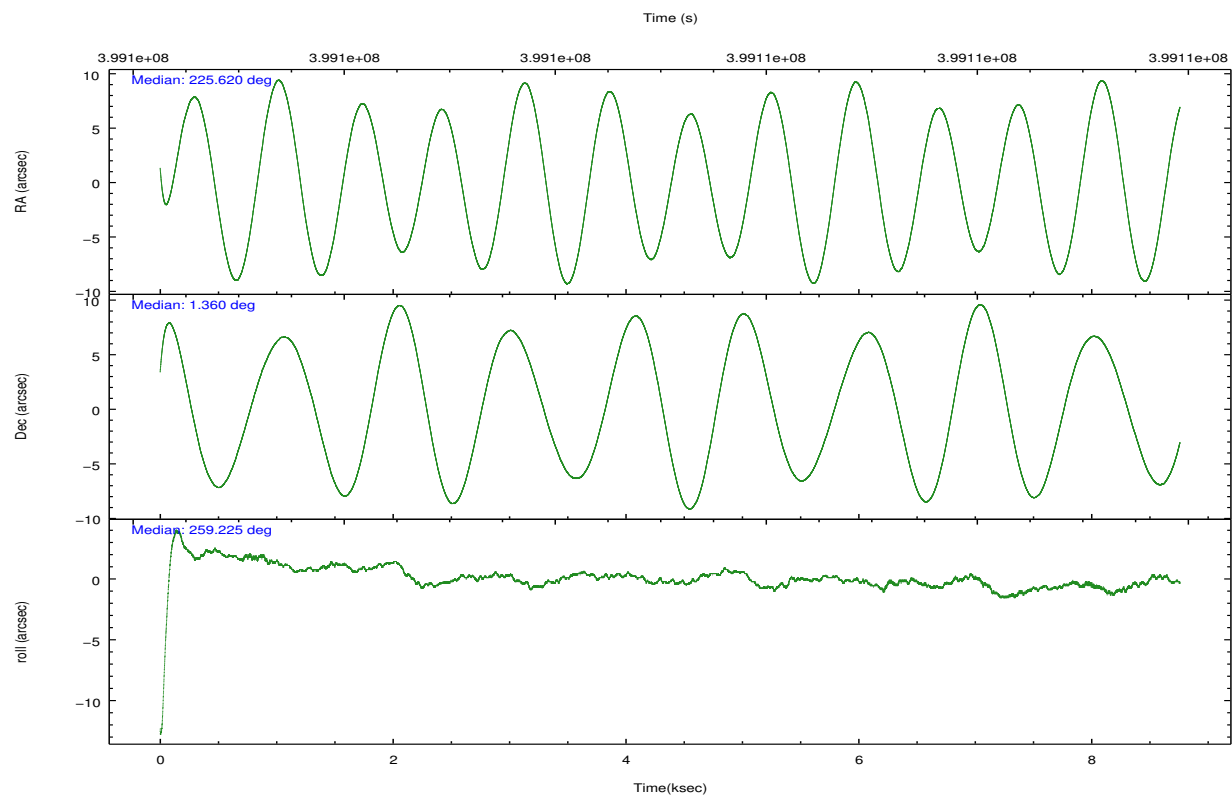
	ccd 4	ccd 5	ccd 6	ccd 7	ccd 8	ccd 9		ccd 4	ccd 5	ccd 6	ccd 7	ccd 8	ccd 9
level 1 events	77567	97940	65700	76657	84668	64792	grade 0 events	5000	6523	2661	3385	7406	2950
rejected events	67769	48157	58328	41593	60842	57079		6%	6%	4%	4%	8%	4%
rejected %	87%	49%	88%	54%	71%	88%	grade 1 events	84	502	48	89	75	38
								0%	0%	0%	0%	0%	0%
							grade 2 events	1927	15097	1624	7266	5324	1631
								2%	15%	2%	9%	6%	2%
							grade 3 events	826	1880	769	3097	2659	836
								1%	1%	1%	4%	3%	1%
							grade 4 events	763	1790	746	3133	2469	757
								0%	1%	1%	4%	2%	1%
							grade 5 events	2798	7364	2895	8129	4126	3238
								3%	7%	4%	10%	4%	4%
							grade 6 events	1286	24523	1575	18214	5990	1543
								1%	25%	2%	23%	7%	2%
							grade 7 events	64883	40261	55382	33344	56619	53799
								83%	41%	84%	43%	66%	83%

2.2 Compared Parameters

Parameter	Planned	Actual	Parameter	Planned	Actual
Instrument	ACIS	ACIS	Obspar format version number	7	7
Detector	ACIS-456789	ACIS-456789	Obspar file type	PREDICTED	ACTUAL
Grating	NONE	NONE	Obspar update status	NONE	UPDATED
Data mode	VFAINT	VFAINT	CCD I0 on	N	N
Observation mode	POINTING	POINTING	CCD I1 on	N	N
[deg] Pointing RA	225.610375	225.6197355364943	CCD I2 on	N	N
[deg] Pointing Dec	1.385382	1.359657736285643	CCD I3 on	N	N
[deg] Pointing Roll	259.070342	259.2267184450214	CCD S0 on	O1	Y
[mm] SIM focus pos	-0.684267	-0.6828225247311905	CCD S1 on	Y	Y
[mm] SIM defocus	0	0.001444936568705701	CCD S2 on	Y	Y
[mm] SIM translation stage pos	-190.132523	-190.1425803651734	CCD S3 on	Y	Y
[mm] SIM translation stage offset	0	0.01005778216563158	CCD S4 on	Y	Y
[s] Observation start time (MET)	399100862.184000	399099555.50003	CCD S5 on	O2	Y
Observation start date	2010-08-25T05:19:56	2010-08-25T04:59:15	Number of optional ACIS chips dropped	0	0
[s] Observation end time (MET)	399109462.184000	399110593.7256	On-chip summing requested	N	N
Observation end date	2010-08-25T07:43:16	2010-08-25T08:03:13	Subarray requested	NONE	NONE
Read mode	TIMED	TIMED	Alternating exposures requested	N	N
			[s] Primary exposure time	0.000000	3.2

2.3 Aspect



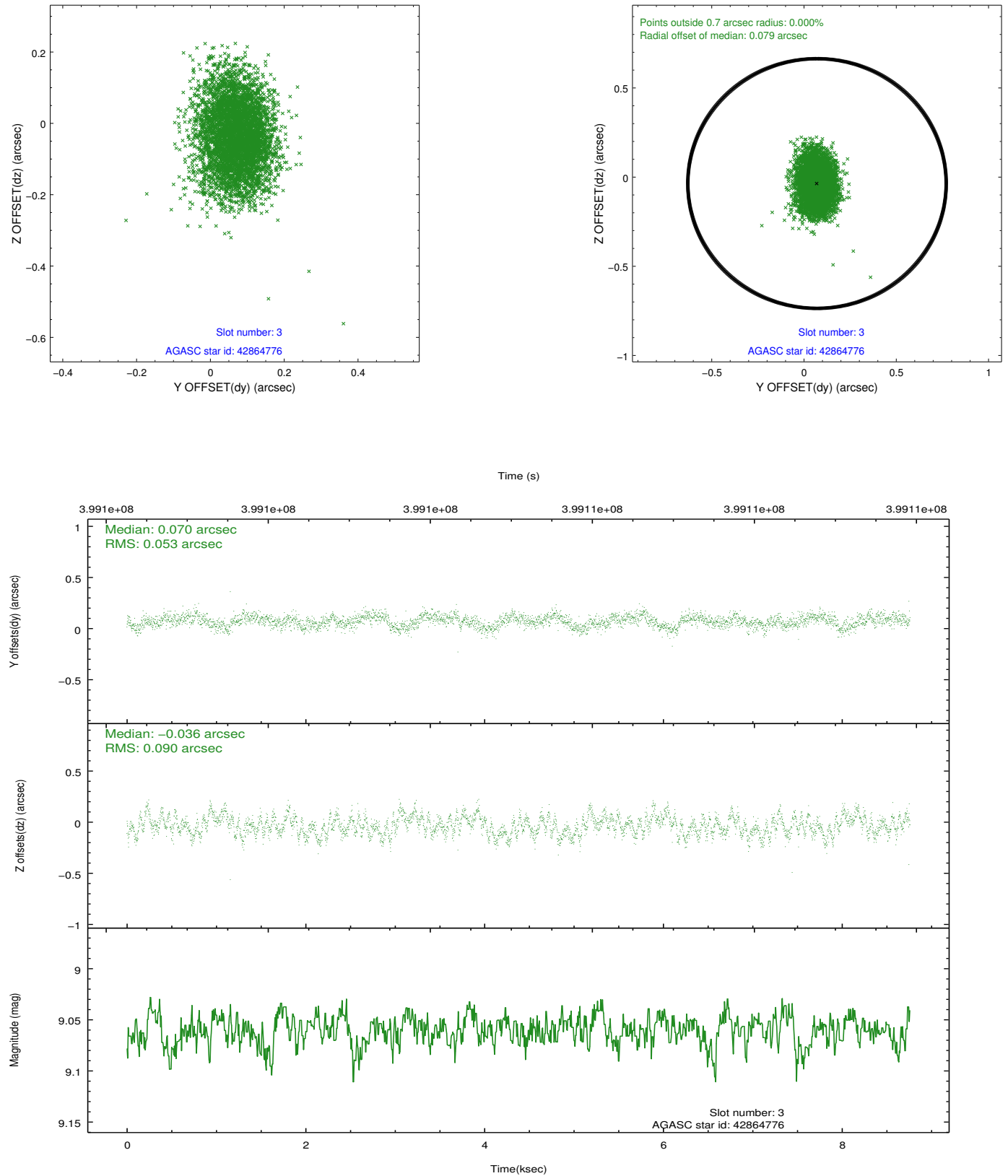


Slot Statistics

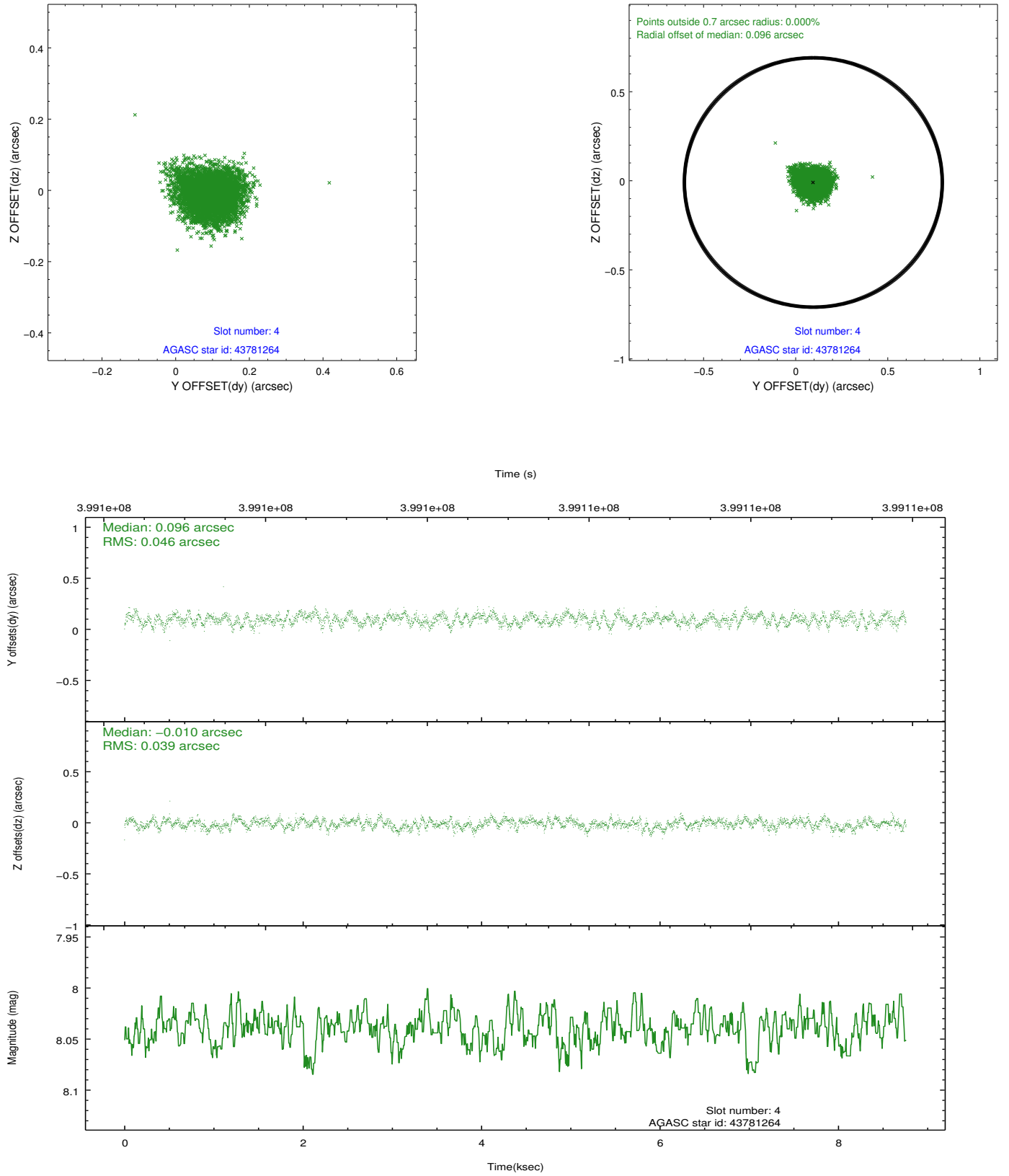
slot	status	id	mag	n_pts	med_dy	med_dz	dr1	dr2	ra	dec	mean_y	mean_z
0	FID	ACIS-S-2	6.89	2137	-0.049	-0.041	0.008	0.013	0.000000	0.000000	-767.57	-1738.78
1	FID	ACIS-S-4	6.97	2137	0.182	0.035	0.006	0.012	0.000000	0.000000	2145.69	169.06
2	FID	ACIS-S-5	7.00	2137	-0.164	0.015	0.006	0.011	0.000000	0.000000	-1819.68	163.52
3	GUIDE	42864776	9.06	4272	0.070	-0.036	0.109	0.181	224.993302	1.618488	-401.70	-2339.54
4	GUIDE	43781264	8.04	4273	0.096	-0.010	0.065	0.102	225.131379	0.900295	2041.75	-1362.21
5	GUIDE	43782432	8.06	4273	-0.100	0.131	0.061	0.099	225.298629	1.853875	-1442.70	-1421.23
6	GUIDE	43785352	8.49	4272	0.101	-0.088	0.071	0.114	225.635562	1.031222	1234.63	330.41
7	GUIDE	43780184	6.75	4273	-0.167	-0.003	0.074	0.113	225.843285	0.889647	1593.99	1161.70

2.4 Star Slots

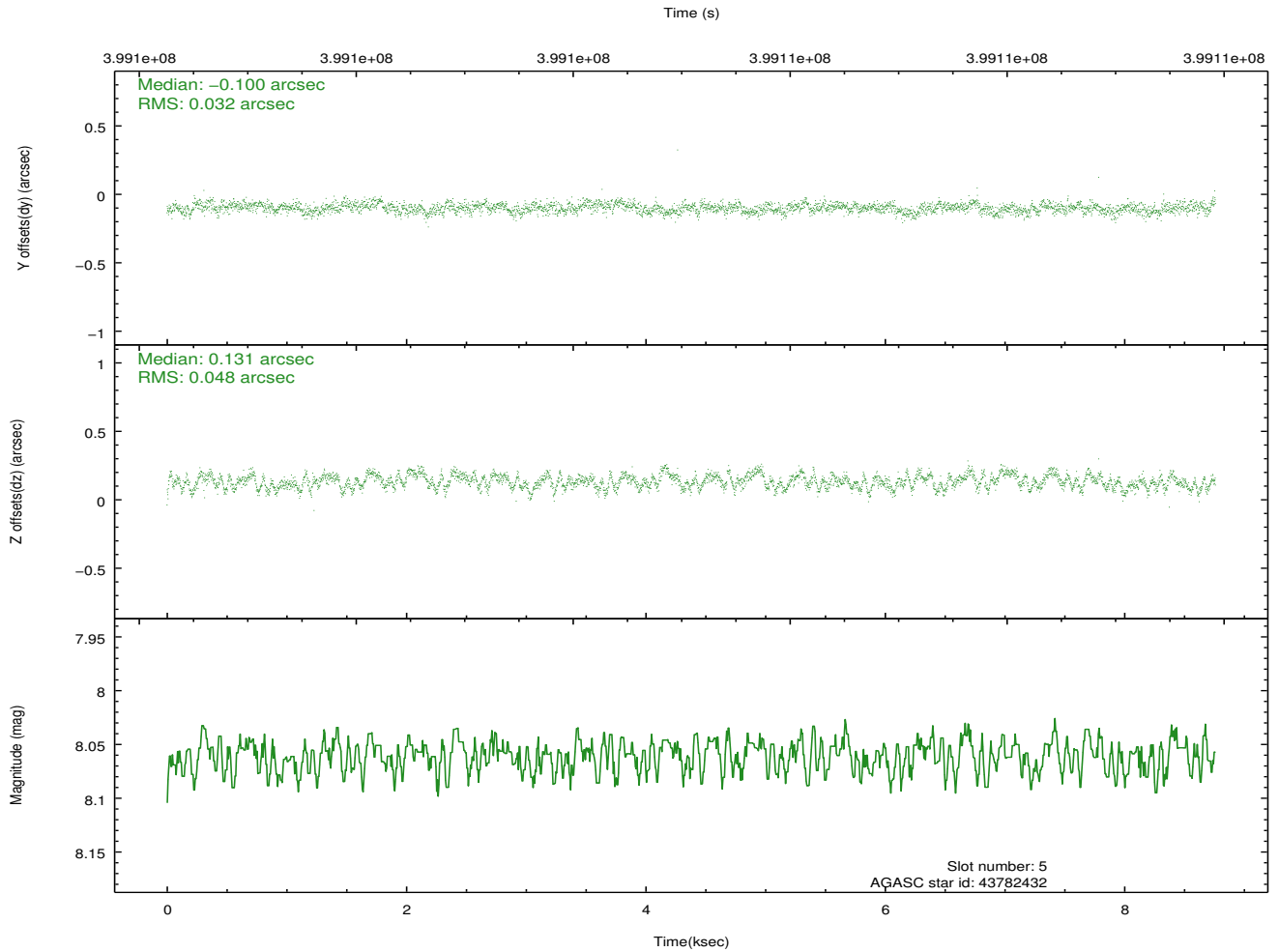
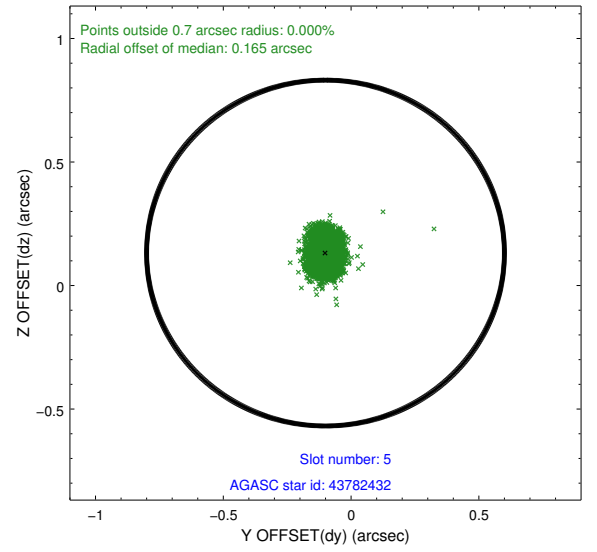
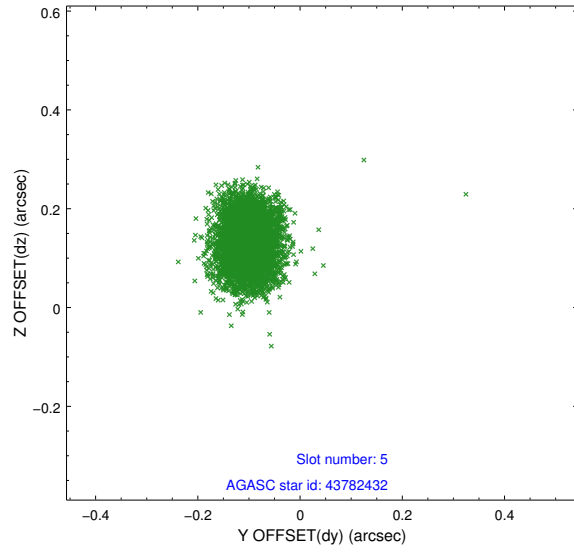
2.4.1 Slot 3



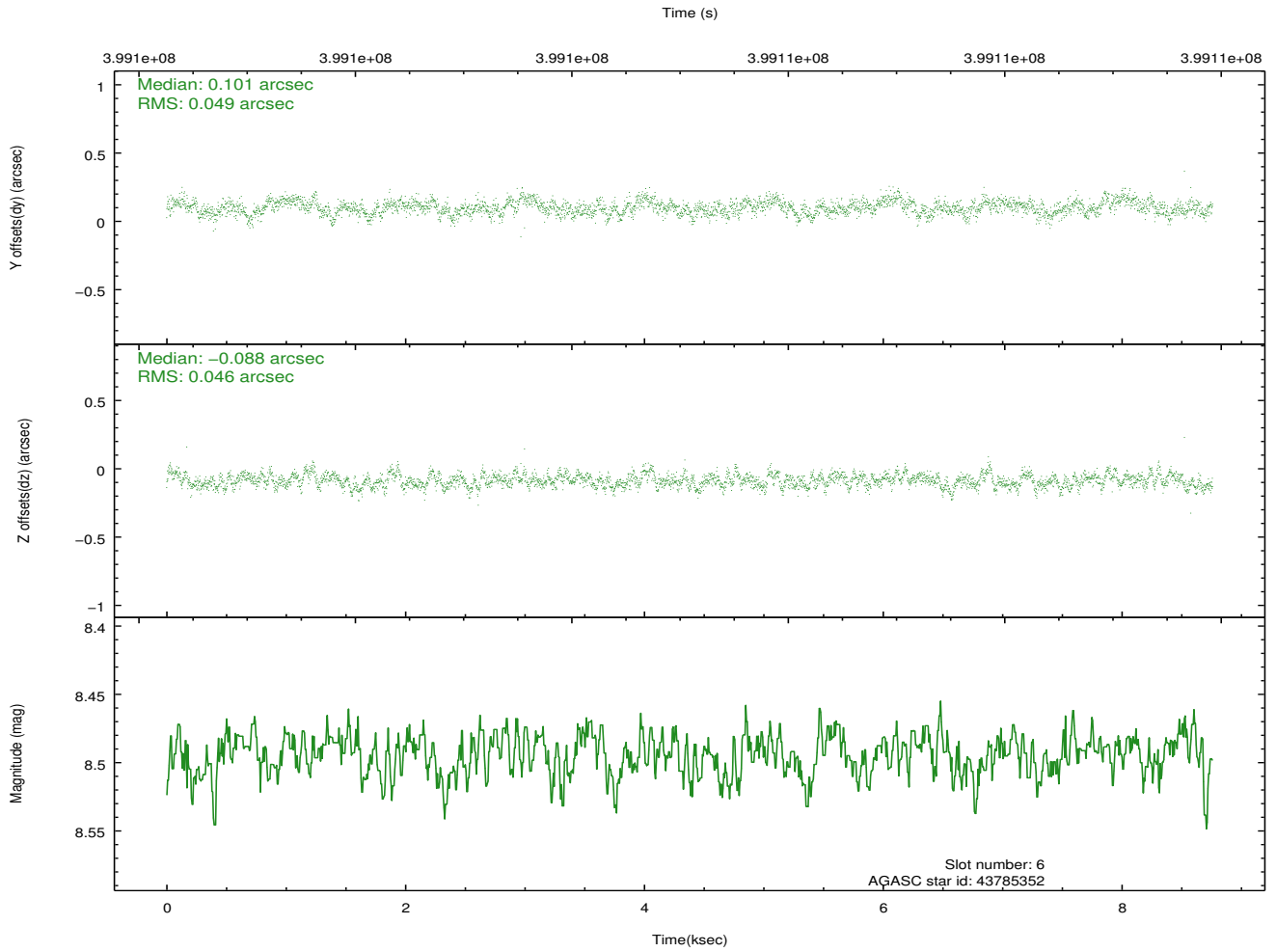
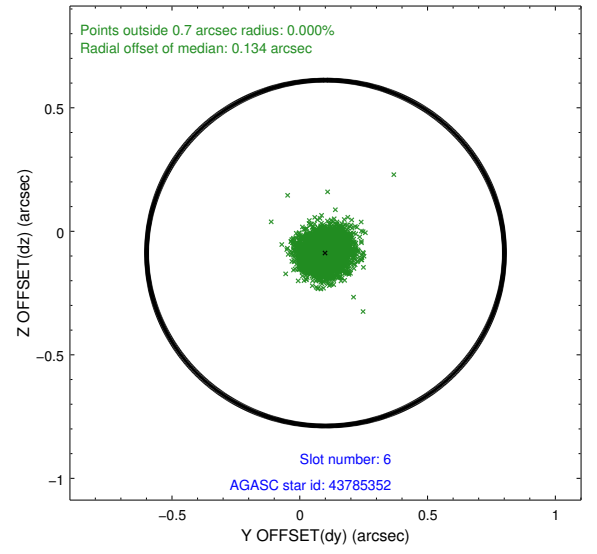
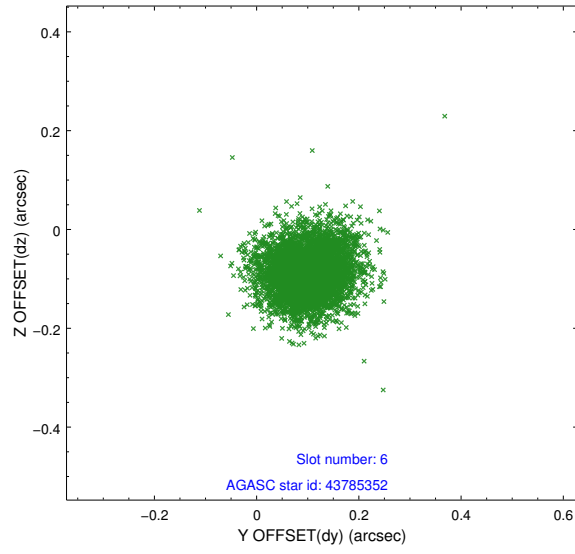
2.4.2 Slot 4



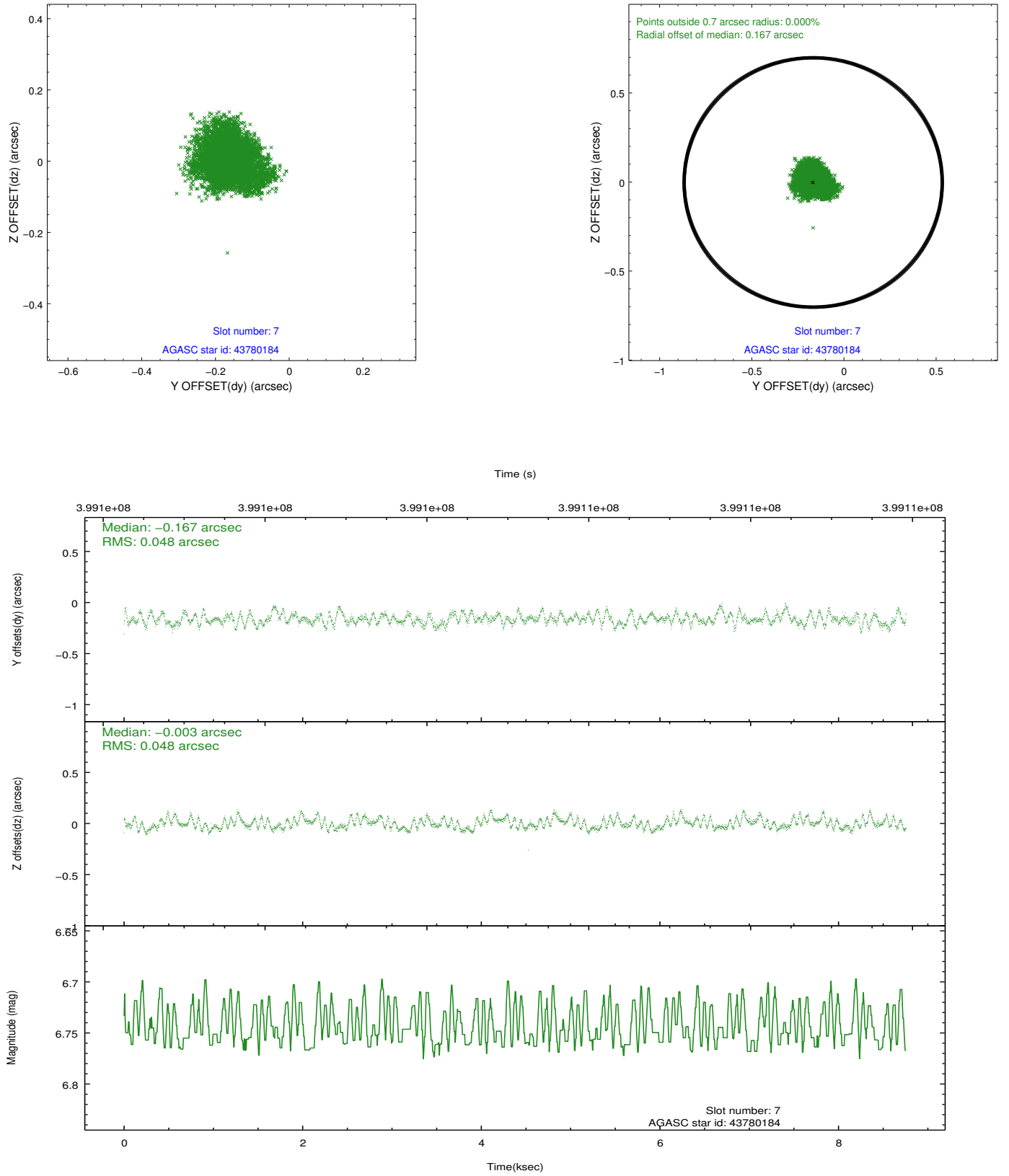
2.4.3 Slot 5



2.4.4 Slot 6

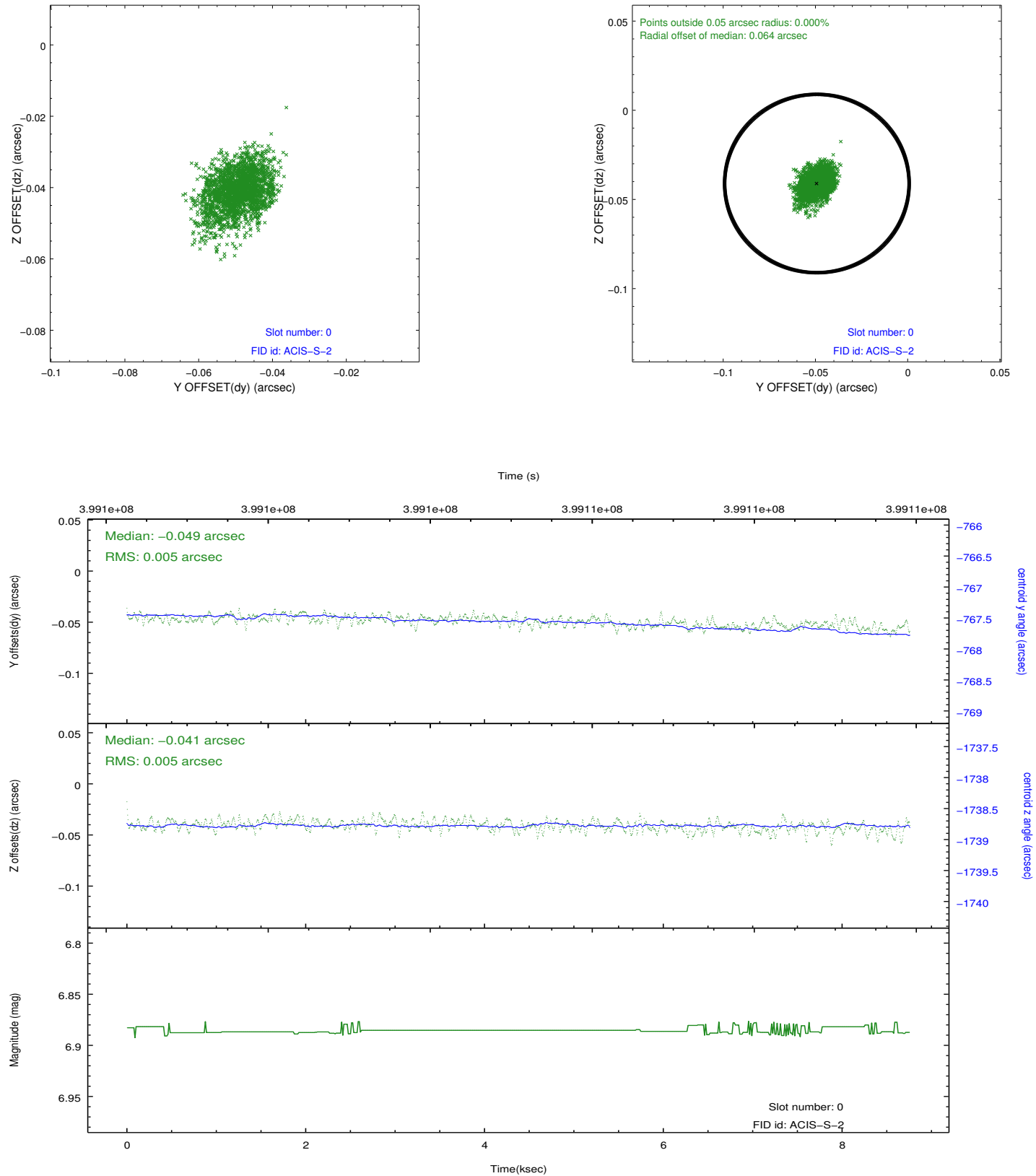


2.4.5 Slot 7

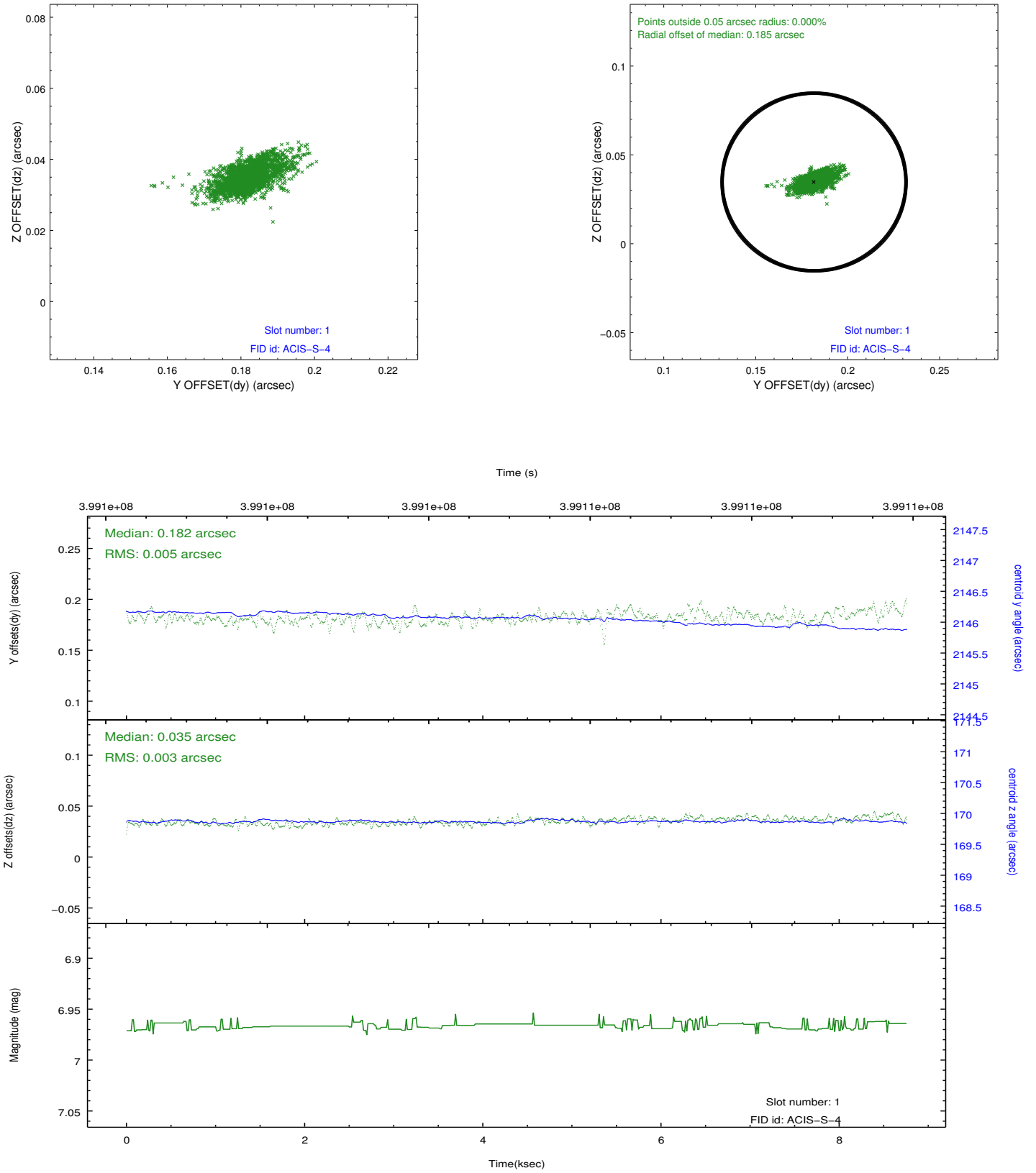


2.5 FID Slots

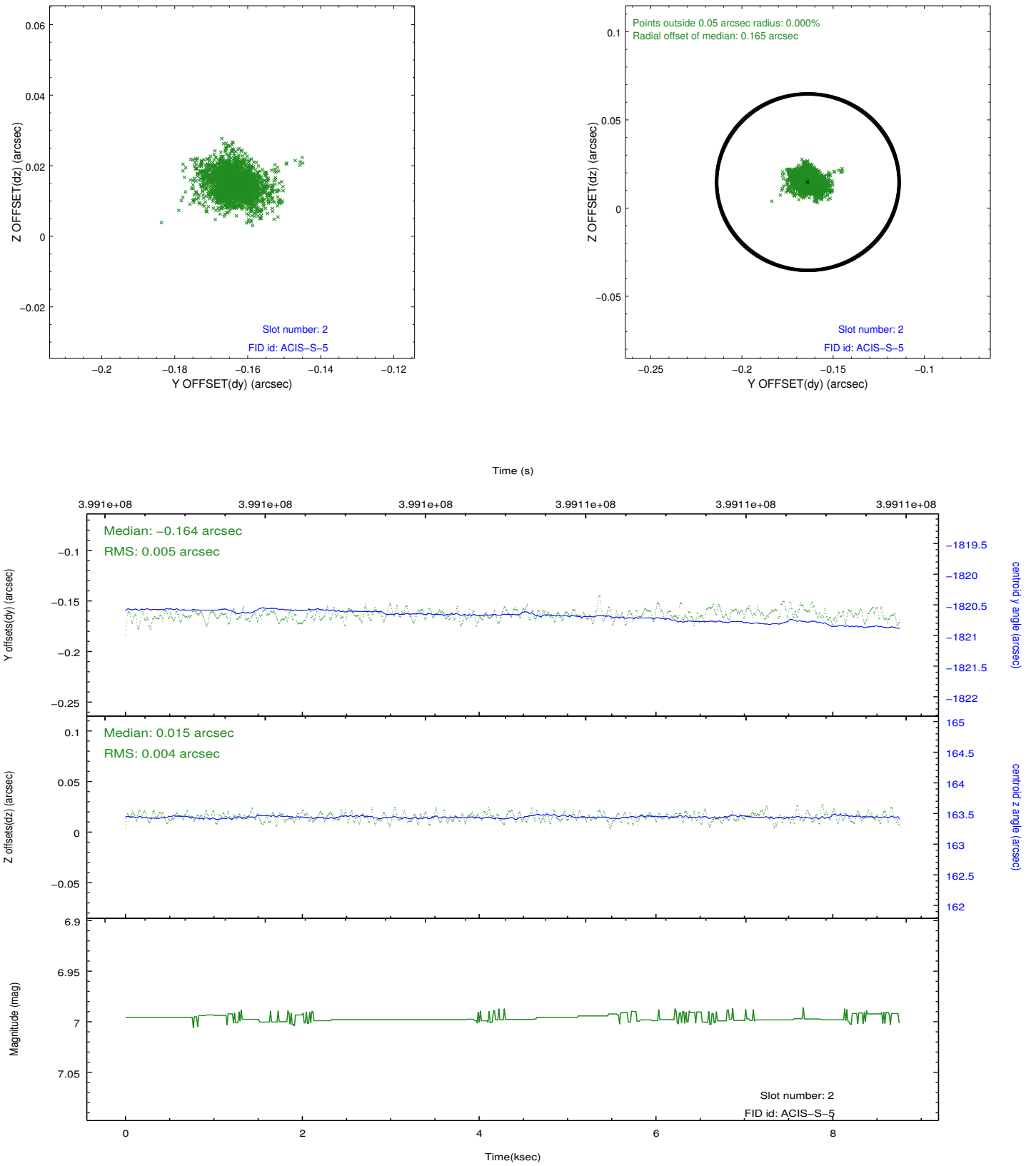
2.5.1 Slot 0



2.5.2 Slot 1



2.5.3 Slot 2



A Summary

A.1 Status

V&V Scientist	Jen Lauer
V&V Date (YYYY-MM-DD)	2012.07.10
V&V Edition	1
V&V Disposition and Status	OK
V&V Charge Time	8.6431999678612

A.2 Comments