

V&V Reference Report

L2 ASCDS Version : 8.4.3.1

Observation 11329 - L2 Version 3
Chandra X-Ray Center

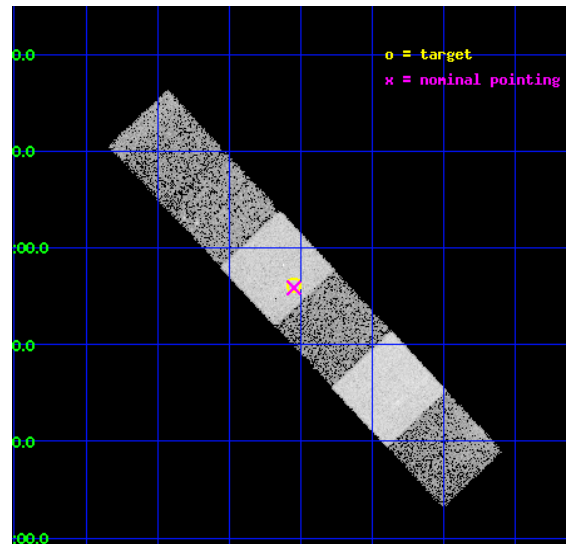
L2 Processing Date : Mar 9 2012

Contents

1	Front	2
2	OBI	3
2.1	OBI	3
2.1.1	Images	3
2.1.2	Bias	3
2.1.3	Parameters	4
2.1.4	Events	4
2.2	Compared Parameters	5
2.3	Aspect	6
2.4	Star Slots	9
2.4.1	Slot 3	9
2.4.2	Slot 4	10
2.4.3	Slot 5	11
2.4.4	Slot 6	12
2.4.5	Slot 7	13
2.5	FID Slots	14
2.5.1	Slot 0	14
2.5.2	Slot 1	15
2.5.3	Slot 2	16
A	Summary	17
A.1	Status	17
A.2	Comments	17

1 Front

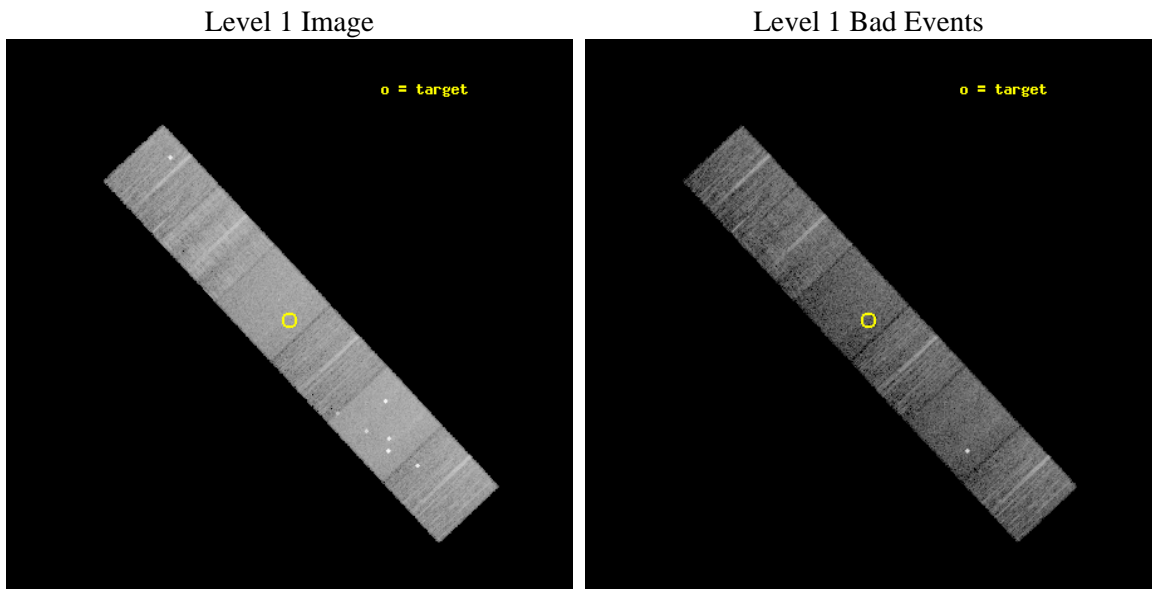
seq_num	600848	Sequence number
obs_id	11329	Observation id
title	Accretion onto nuclear black holes in early type galaxies: comparing field vs. clusters	Proposal title
observer	Elena Gallo	Principal investigator
object	SDSSJ150233.03+015608.3	Source name
dtcycle	0	
cycle	P	events from which exps? Prim/Second/Both
ra_targ	225.638	Observer's specified target RA [deg]
dec_targ	1.93582	Observer's specified target Dec [deg]
ra_nom	225.63701345481	Nominal RA [deg]
dec_nom	1.931016074069	Nominal Dec [deg]
roll_nom	226.81085549031	Nominal Roll [deg]
revision	3	Processing version of data
ontime	10148.977738619	Sum of GTIs [s]
livetime	10020.465271512	Livetime [s]
ontime4	10149.018778622	Sum of GTIs [s]
ontime5	10148.936698616	Sum of GTIs [s]
ontime6	10148.895658612	Sum of GTIs [s]
ontime7	10148.977738619	Sum of GTIs [s]
ontime8	10148.854618609	Sum of GTIs [s]
ontime9	10148.813578606	Sum of GTIs [s]
l2events	112014	Number of level 2 events



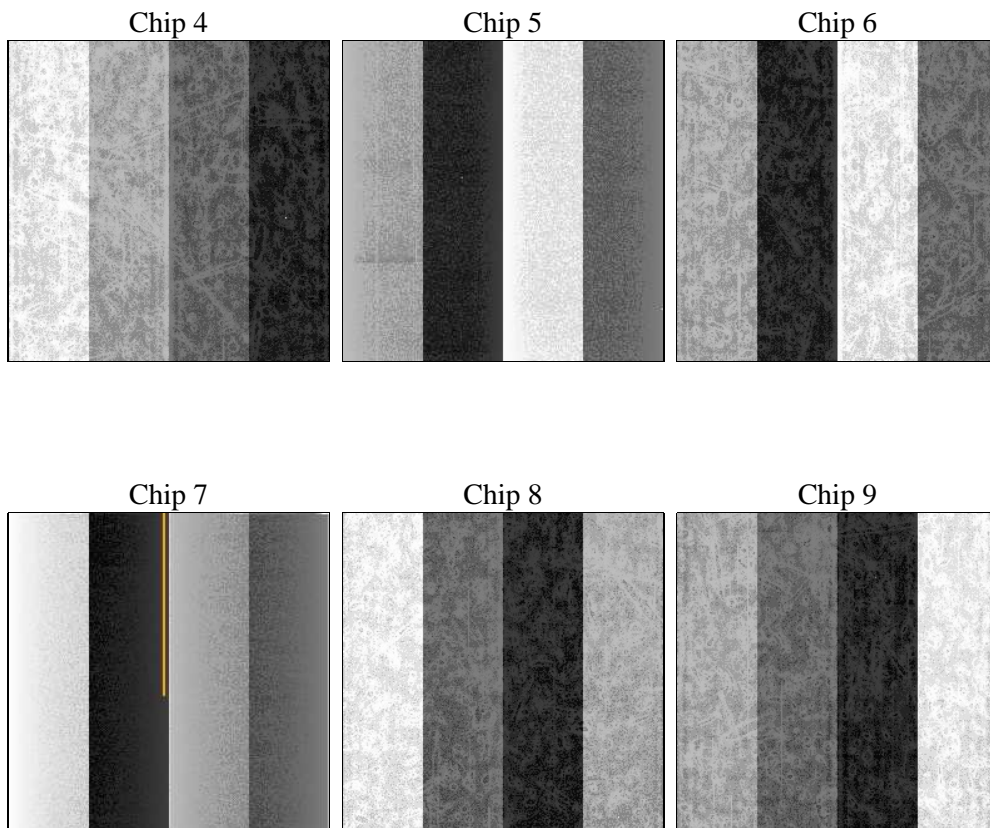
2 OBI

2.1 OBI

2.1.1 Images



2.1.2 Bias



2.1.3 Parameters

obi_num	0	Obi number	sched_exp_time	10100.000000	[s] Scheduled observation exposure time
ascdsver	8.4.3.1	Processing system revision	ontime	10148.977738619	Sum of GTIs [s]
caldsver	4.4.8	 	ontime4	10149.018778622	Sum of GTIs [s]
date	2012-03-09T17:24:29	Date and time of file creation	ontime5	10148.936698616	Sum of GTIs [s]
revision	3	Processing version of data	ontime6	10148.895658612	Sum of GTIs [s]
			ontime7	10148.977738619	Sum of GTIs [s]
			ontime8	10148.854618609	Sum of GTIs [s]
			ontime9	10148.813578606	Sum of GTIs [s]
			l1events	493699	Number of level 1 events

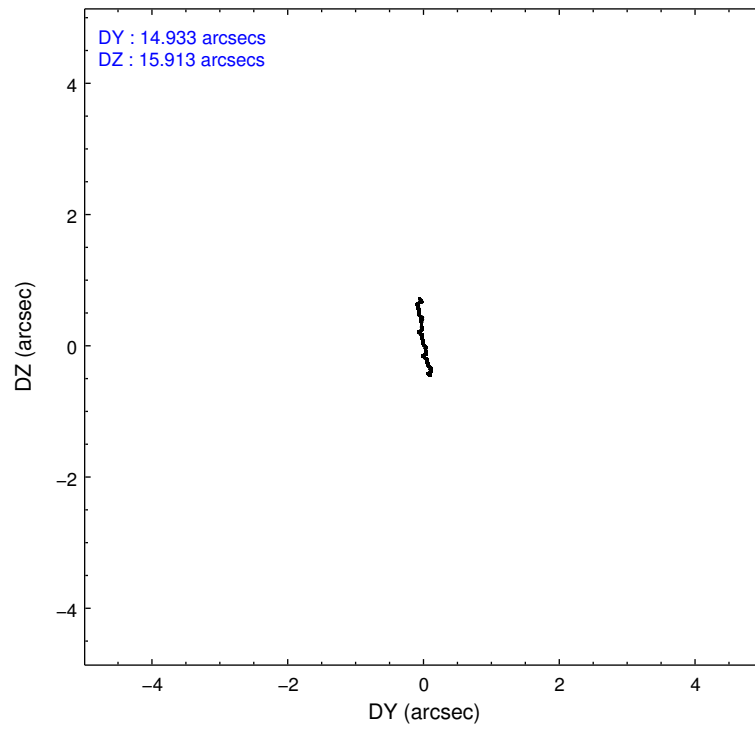
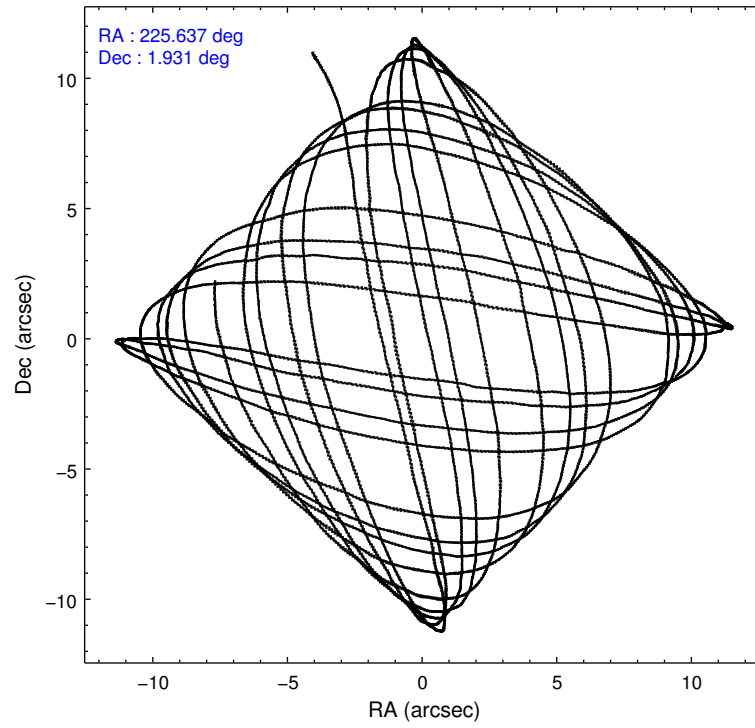
2.1.4 Events

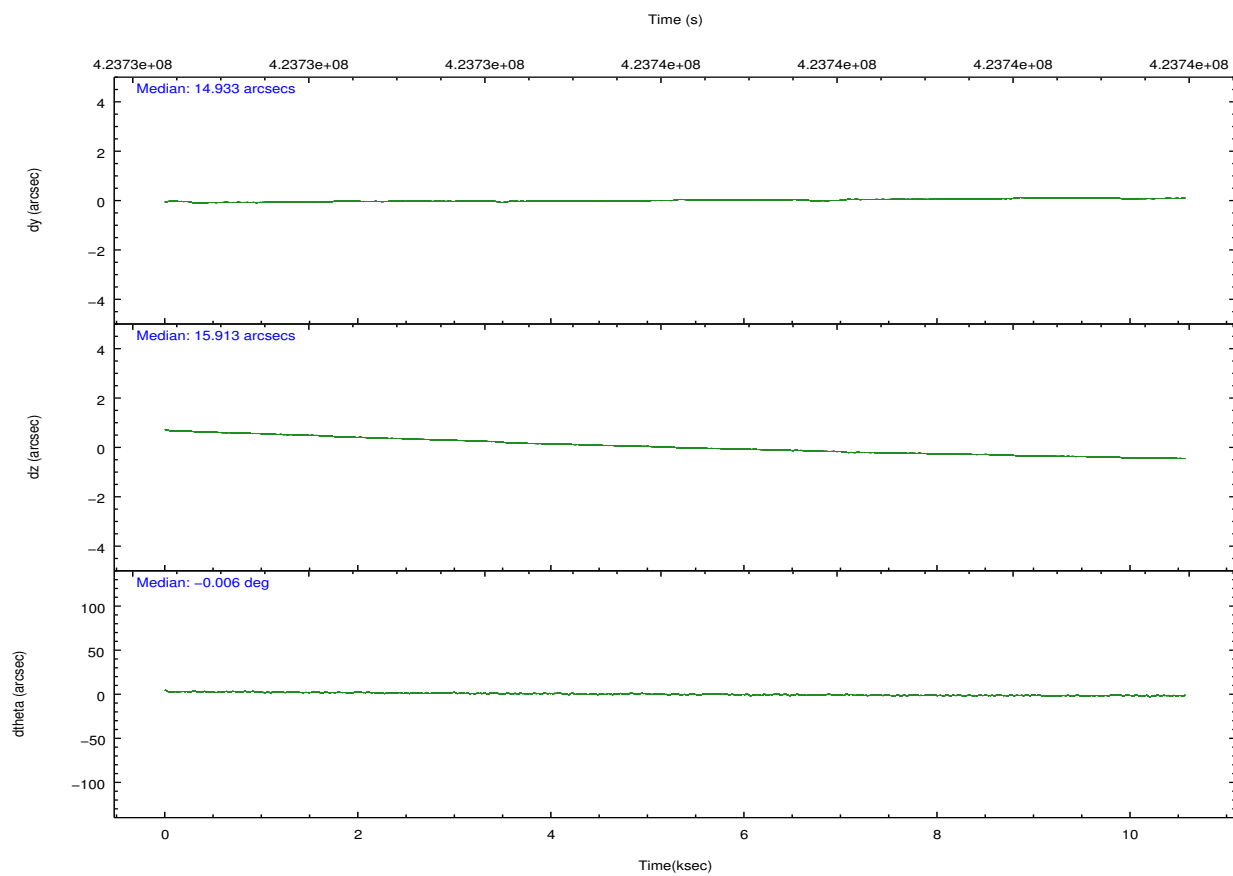
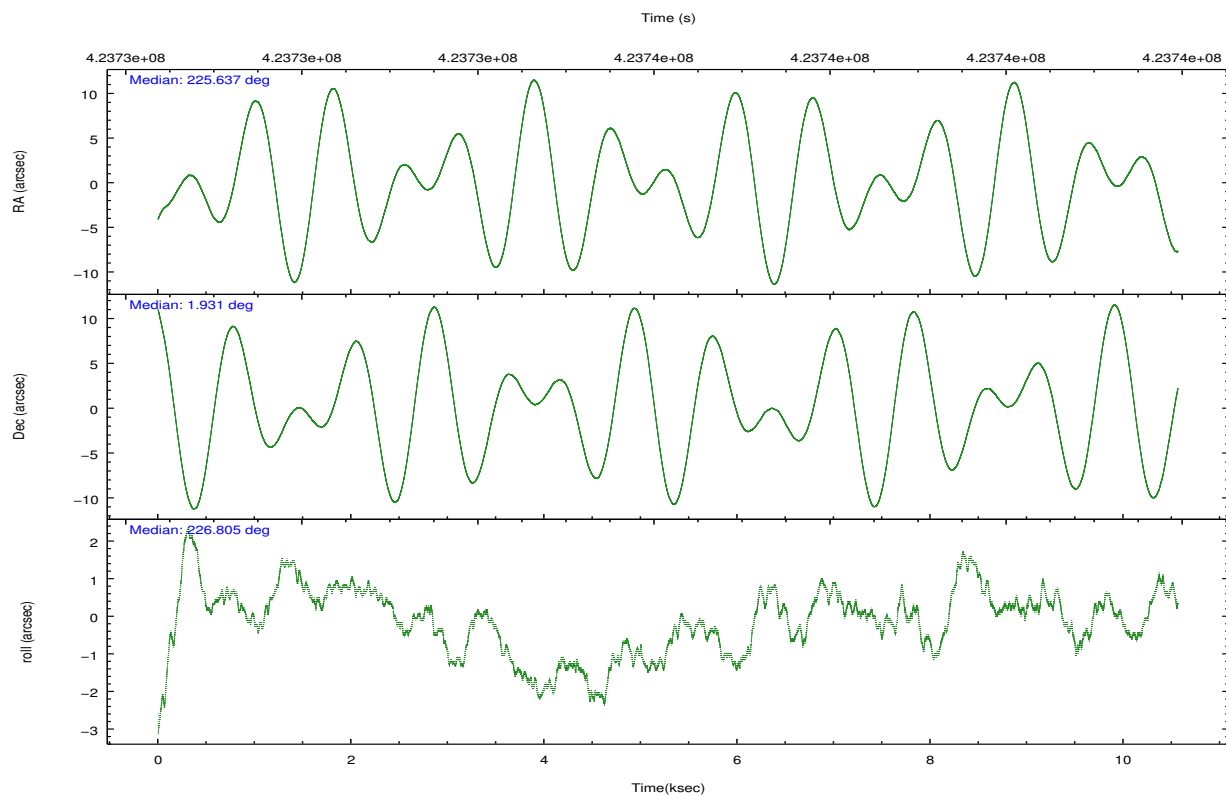
	ccd 4	ccd 5	ccd 6	ccd 7	ccd 8	ccd 9		ccd 4	ccd 5	ccd 6	ccd 7	ccd 8	ccd 9
level 1 events	77403	107871	65723	81657	92096	68949	grade 0 events	6393	9517	2962	3526	8503	3219
rejected events	65857	52494	57890	44684	64267	58478		8%	8%	4%	4%	9%	4%
rejected %	85%	48%	88%	54%	69%	84%	grade 1 events	77	238	41	111	78	47
								0%	0%	0%	0%	0%	0%
							grade 2 events	2178	16383	1673	7524	5975	3856
								2%	15%	2%	9%	6%	5%
							grade 3 events	868	1950	778	3244	3188	825
								1%	1%	1%	3%	3%	1%
							grade 4 events	740	1795	752	3250	2890	847
								0%	1%	1%	3%	3%	1%
							grade 5 events	3008	8189	3011	8239	4412	3334
								3%	7%	4%	10%	4%	4%
							grade 6 events	1376	25772	1674	19450	7284	1734
								1%	23%	2%	23%	7%	2%
							grade 7 events	62763	44027	54832	36313	59766	55087
								81%	40%	83%	44%	64%	79%

2.2 Compared Parameters

Parameter	Planned	Actual	Parameter	Planned	Actual
Instrument	ACIS	ACIS	Obspar format version number	7	7
Detector	ACIS-456789	ACIS-456789	Obspar file type	PREDICTED	ACTUAL
Grating	NONE	NONE	Obspar update status	NONE	UPDATED
Data mode	VFAINT	VFAINT	CCD I0 on	N	N
Observation mode	POINTING	POINTING	CCD I1 on	N	N
[deg] Pointing RA	225.642911	225.6370134548053	CCD I2 on	N	N
[deg] Pointing Dec	1.957778	1.931016074069019	CCD I3 on	N	N
[deg] Pointing Roll	226.654026	226.8108554903075	CCD S0 on	O1	Y
[mm] SIM focus pos	-0.684267	-0.6828225247311905	CCD S1 on	Y	Y
[mm] SIM defocus	0	0.001444936568705701	CCD S2 on	Y	Y
[mm] SIM translation stage pos	-190.132523	-190.1425803651734	CCD S3 on	Y	Y
[mm] SIM translation stage offset	0	0.01005778216563158	CCD S4 on	Y	Y
[s] Observation start time (MET)	423731350.184000	423730200.68484	CCD S5 on	O2	Y
Observation start date	2011-06-06T07:08:04	2011-06-06T06:50:00	Number of optional ACIS chips dropped	0	0
[s] Observation end time (MET)	423741450.184000	423742553.98549	On-chip summing requested	N	N
Observation end date	2011-06-06T09:56:24	2011-06-06T10:15:53	Subarray requested	NONE	NONE
Read mode	TIMED	TIMED	Alternating exposures requested	N	N
			[s] Primary exposure time	0.000000	3.2

2.3 Aspect



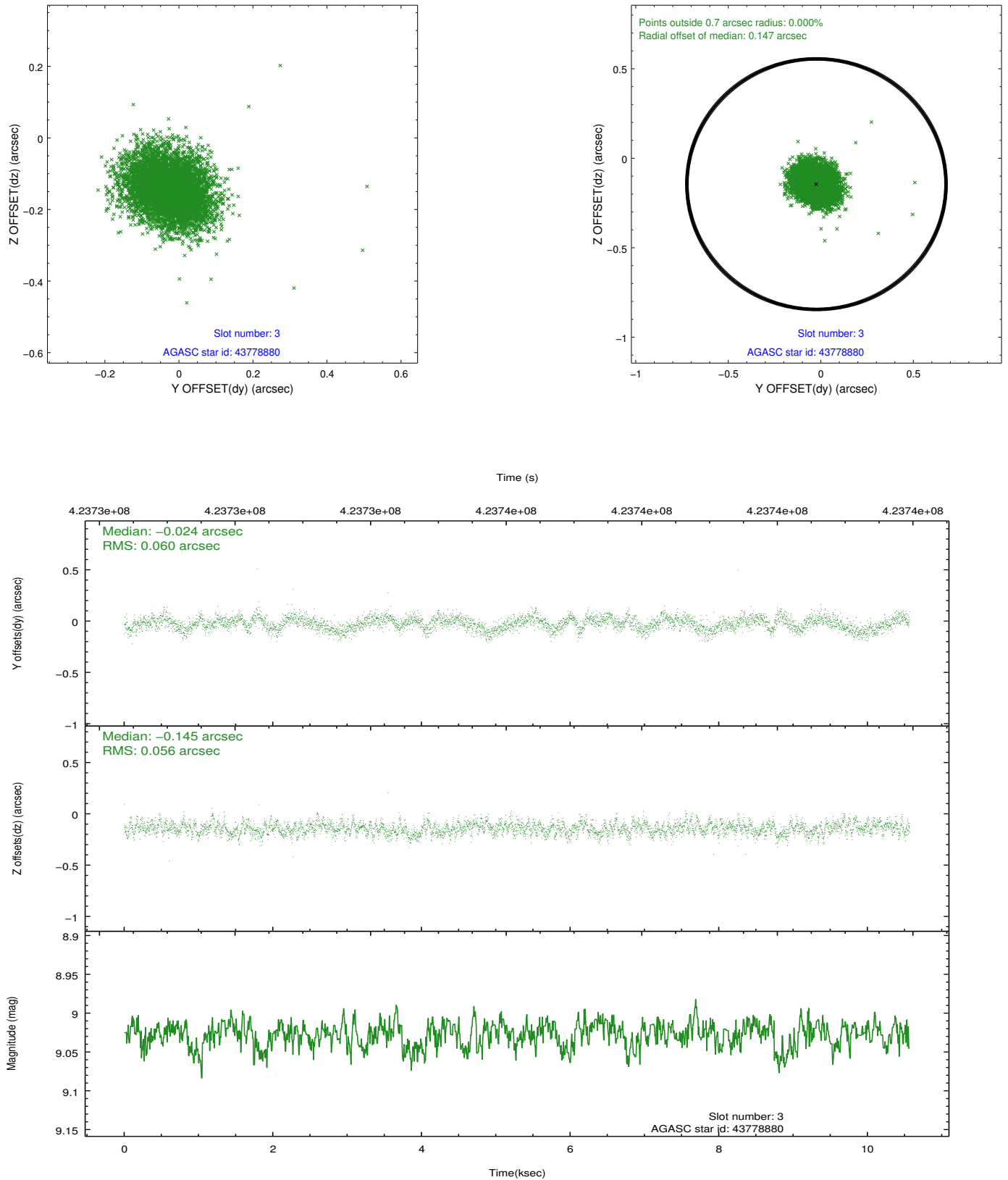


Slot Statistics

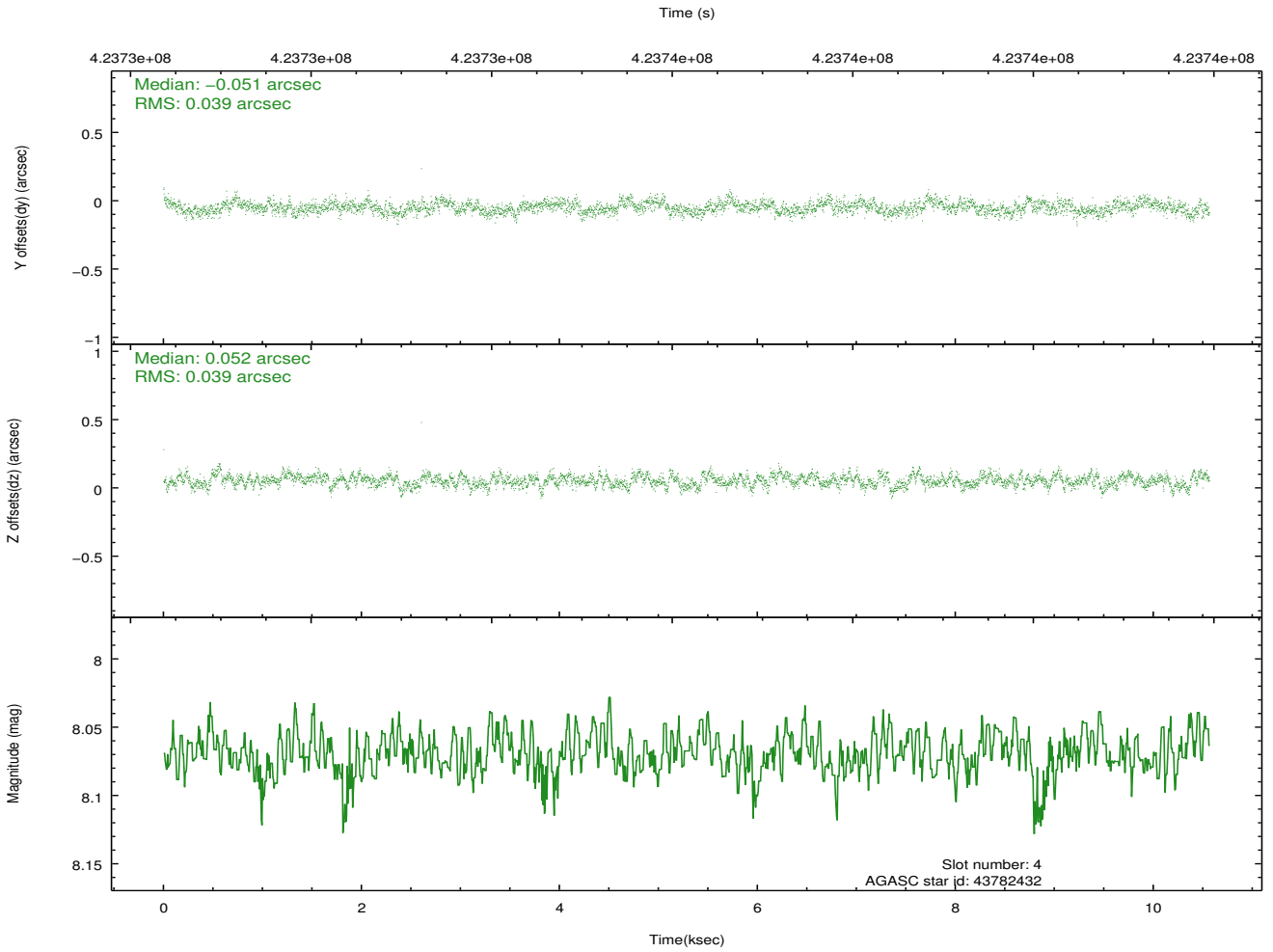
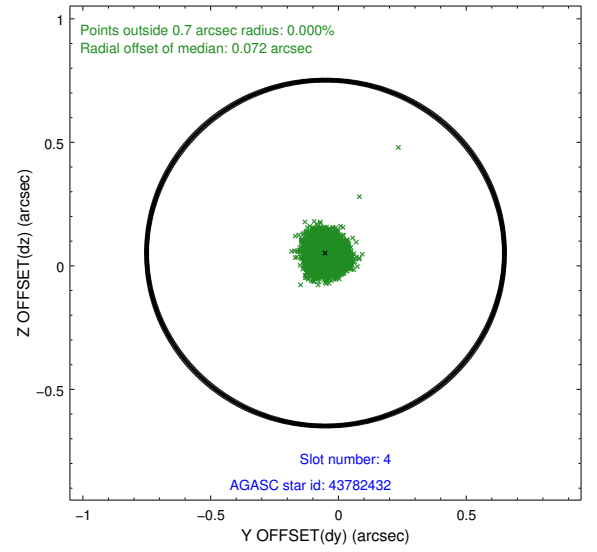
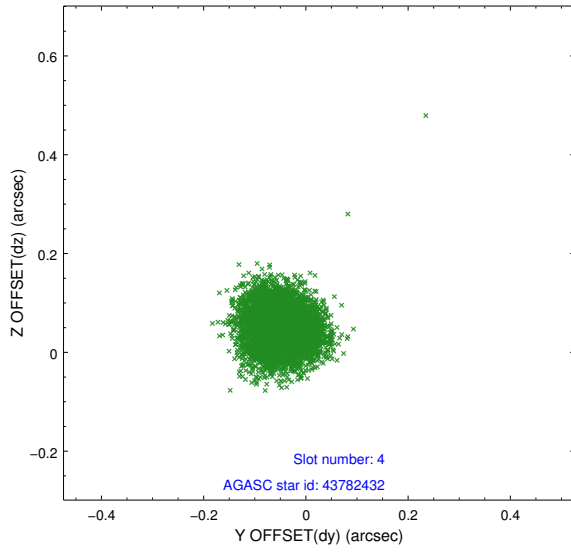
slot	status	id	mag	n_pts	med_dy	med_dz	dr1	dr2	ra	dec	mean_y	mean_z
0	FID	ACIS-S-1	6.98	2577	0.068	-0.072	0.014	0.022	0.000000	0.000000	928.20	-1733.01
1	FID	ACIS-S-5	7.03	2577	-0.152	0.030	0.011	0.019	0.000000	0.000000	-1820.75	164.14
2	FID	ACIS-S-6	7.14	2577	0.061	0.051	0.009	0.014	0.000000	0.000000	393.20	808.68
3	GUIDE	43778880	9.03	5150	-0.024	-0.145	0.087	0.140	225.720242	1.617889	698.35	1041.50
4	GUIDE	43782432	8.07	5153	-0.051	0.052	0.058	0.094	225.298629	1.853875	1122.46	-643.70
5	GUIDE	44302592	7.87	5154	-0.075	-0.006	0.057	0.095	226.320439	2.016885	-1827.68	1625.78
6	GUIDE	44303984	8.64	5155	0.094	-0.009	0.066	0.106	225.918266	2.386308	-1801.93	-338.46
7	GUIDE	44304040	8.09	5153	0.055	0.111	0.072	0.117	225.823407	2.372575	-1531.76	-552.85

2.4 Star Slots

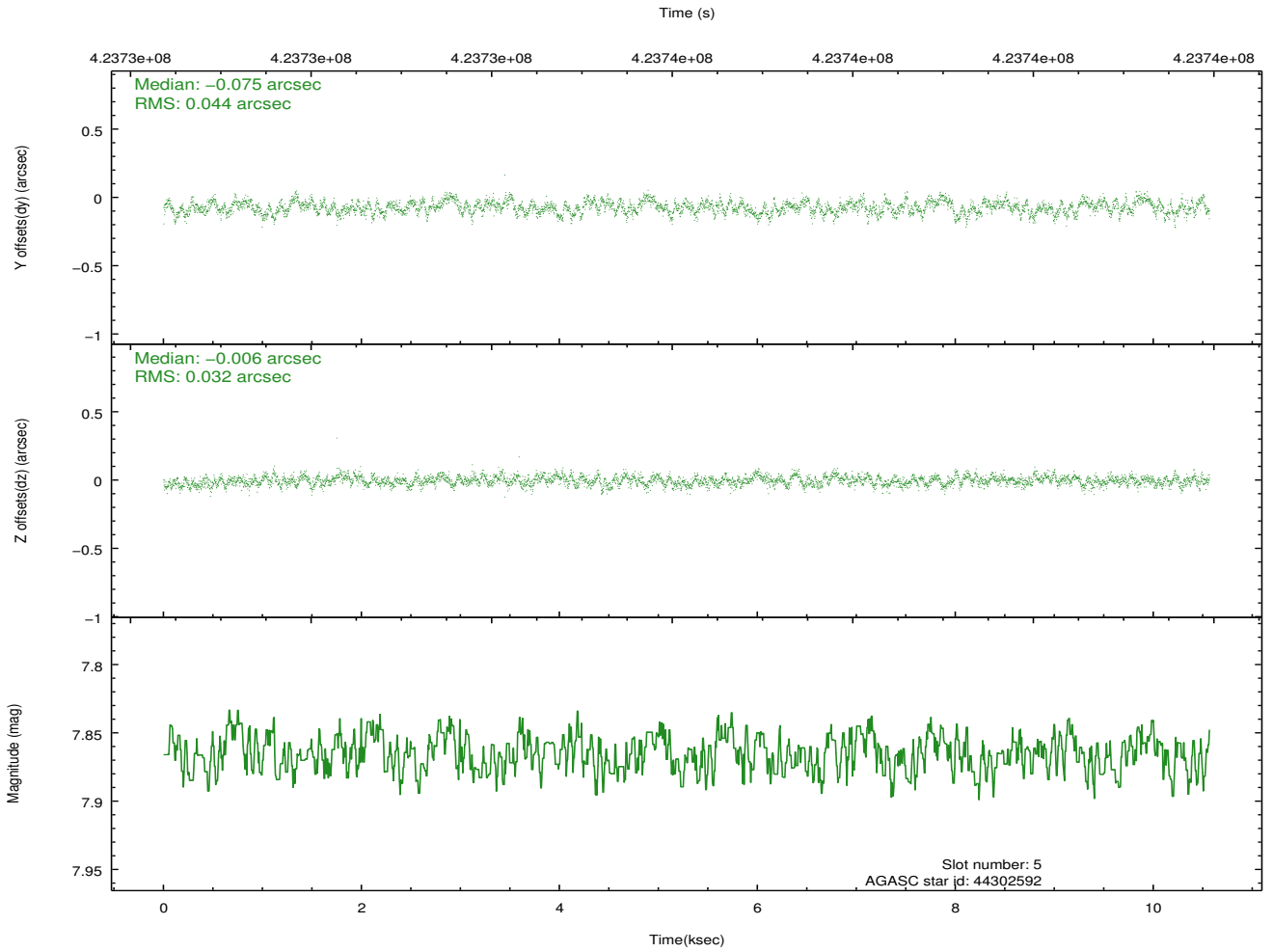
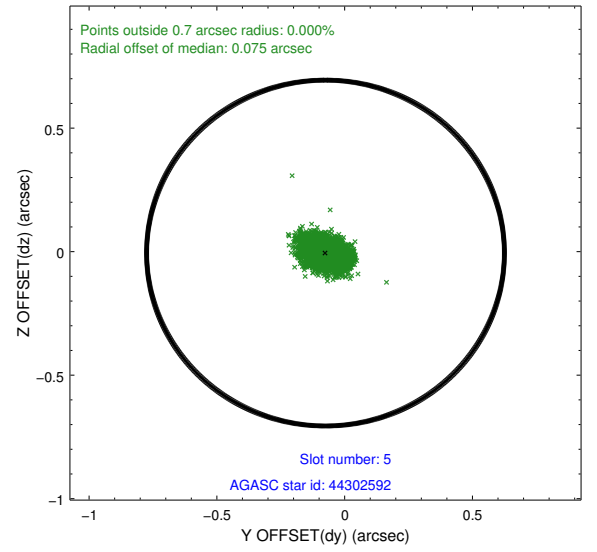
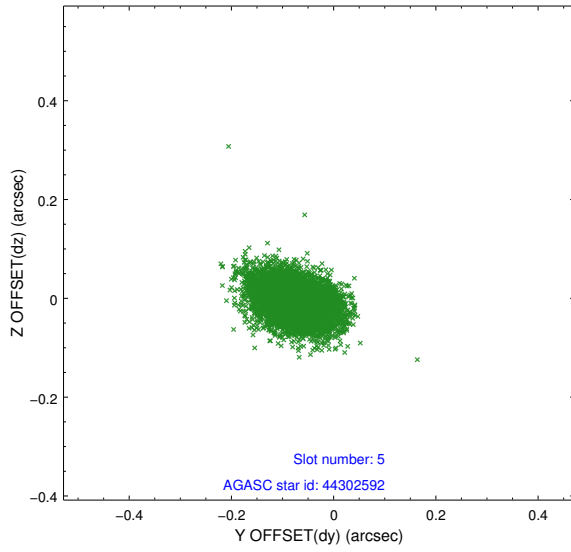
2.4.1 Slot 3



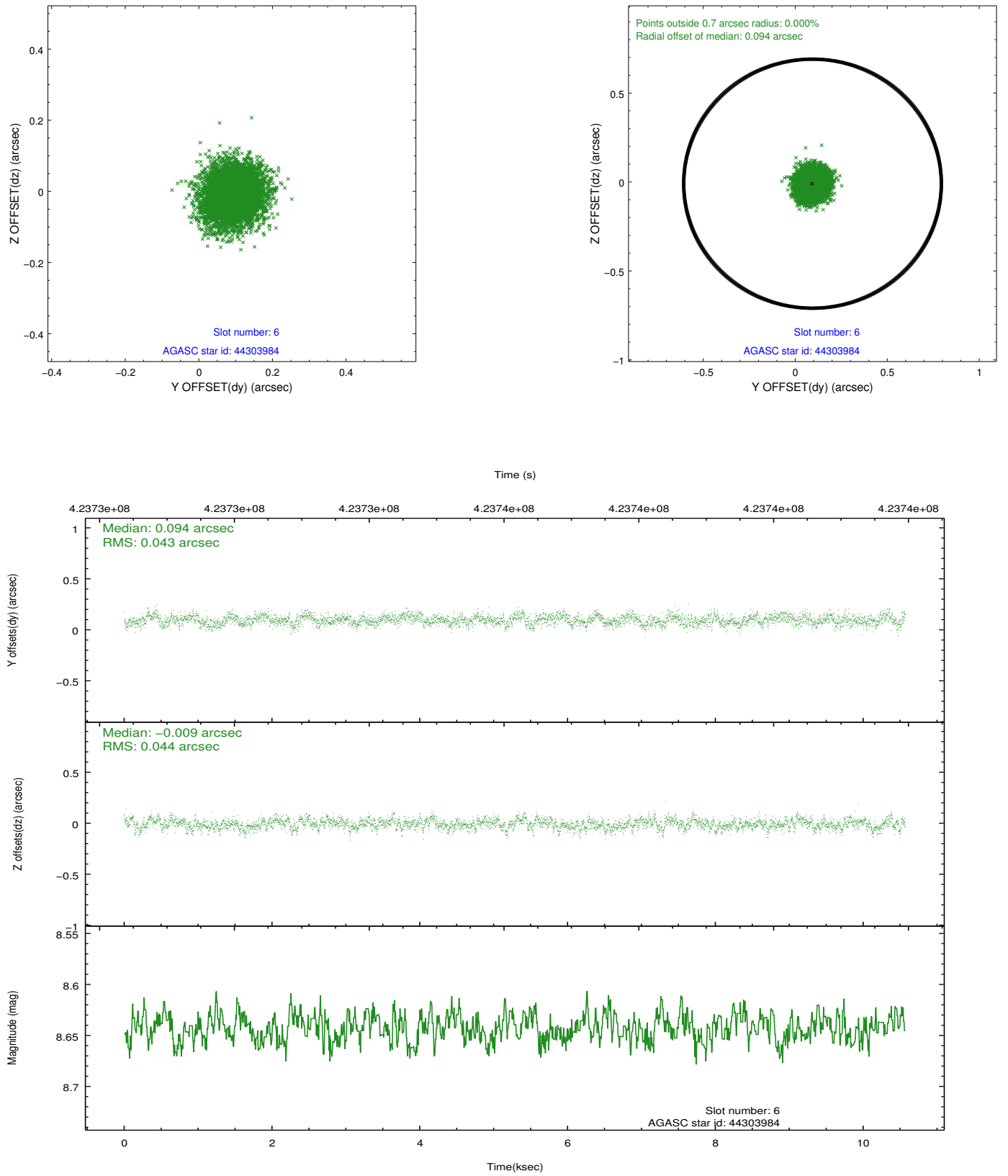
2.4.2 Slot 4



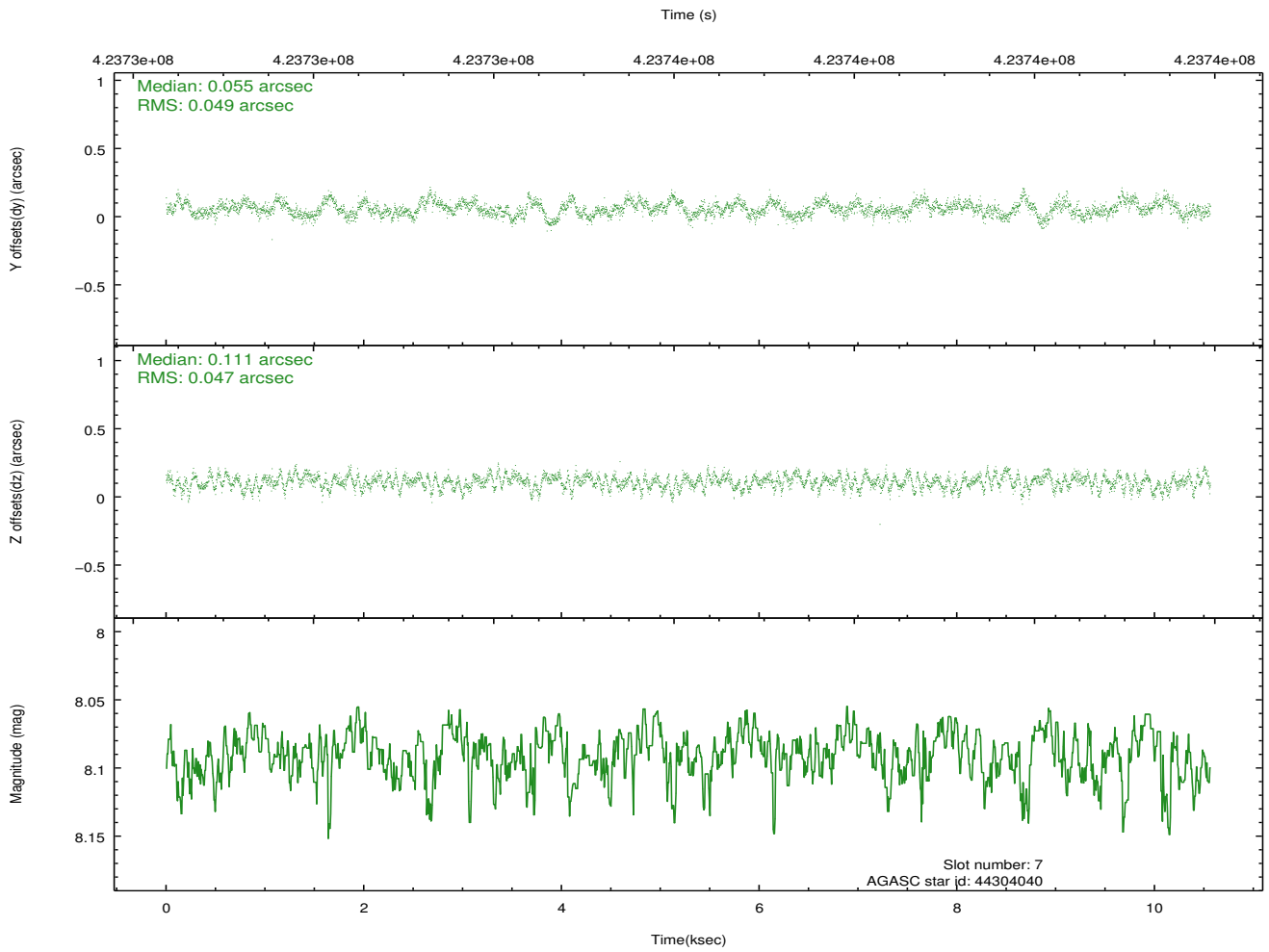
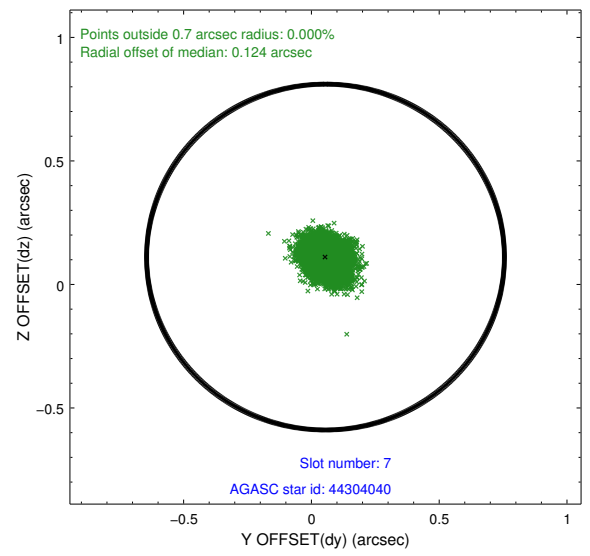
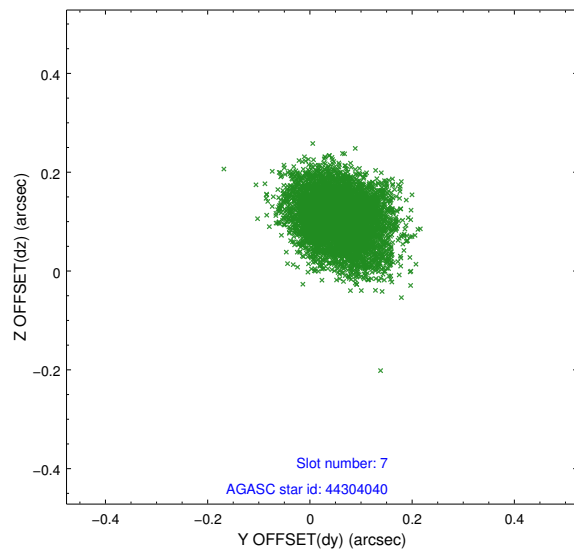
2.4.3 Slot 5



2.4.4 Slot 6

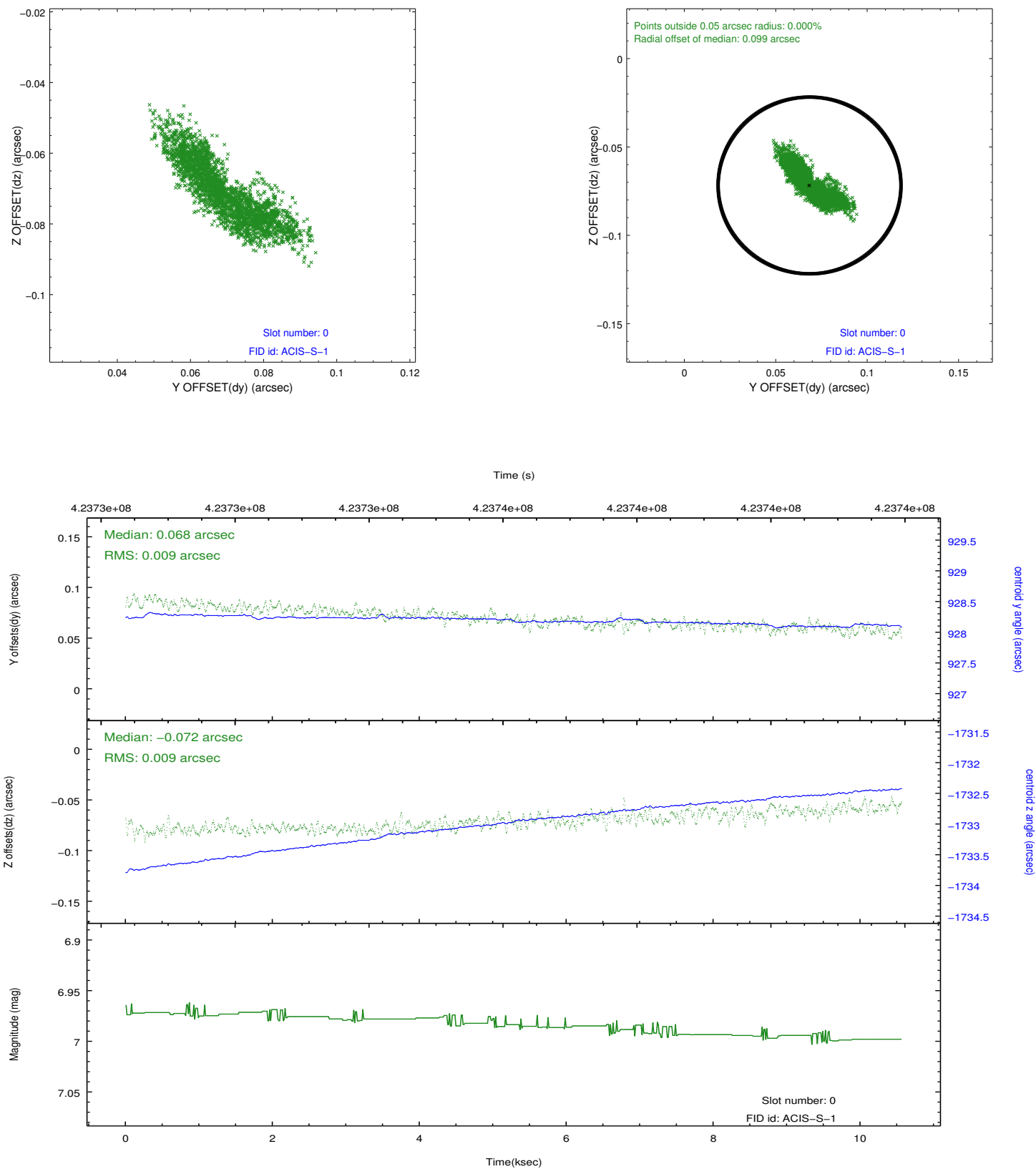


2.4.5 Slot 7

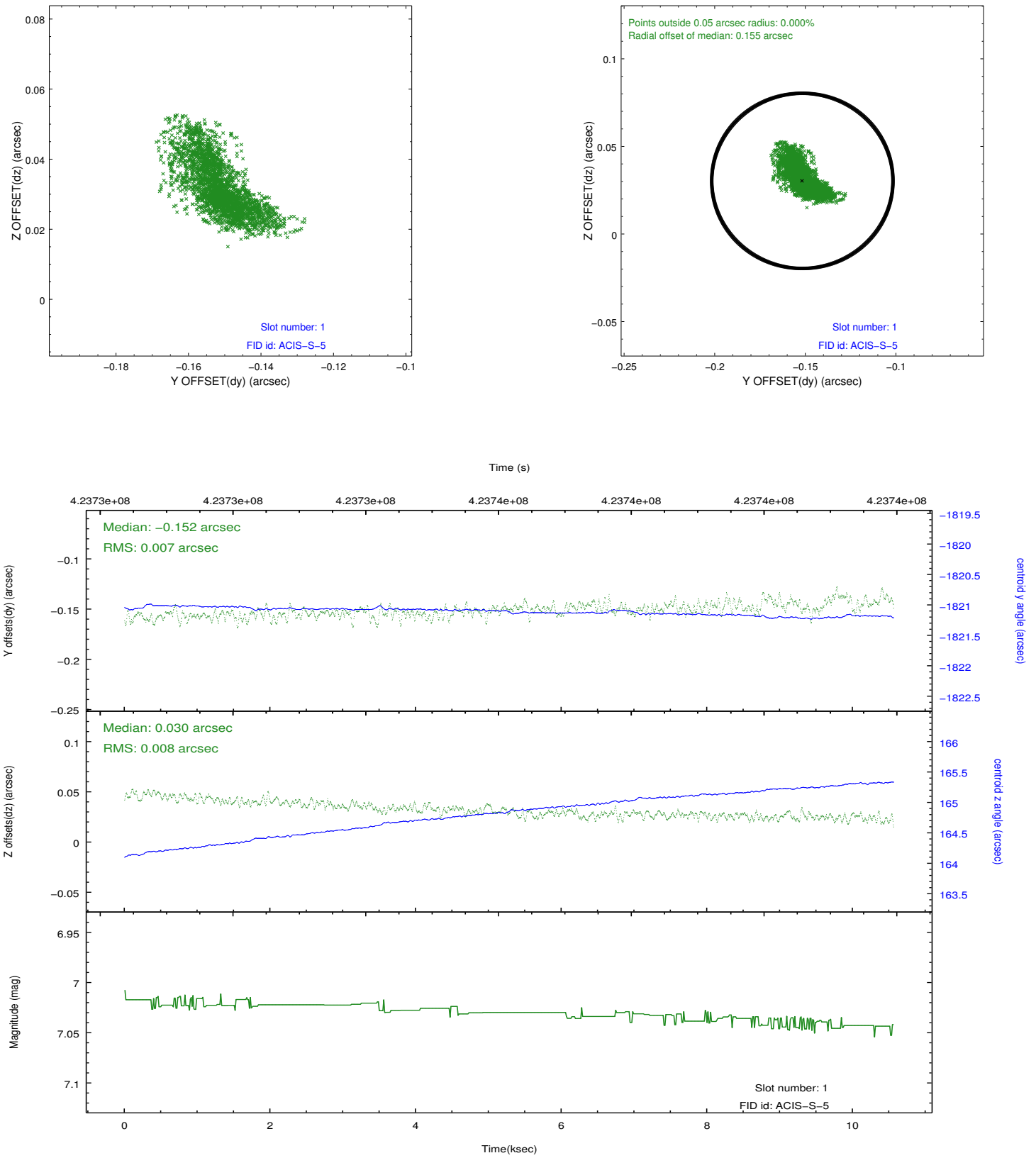


2.5 FID Slots

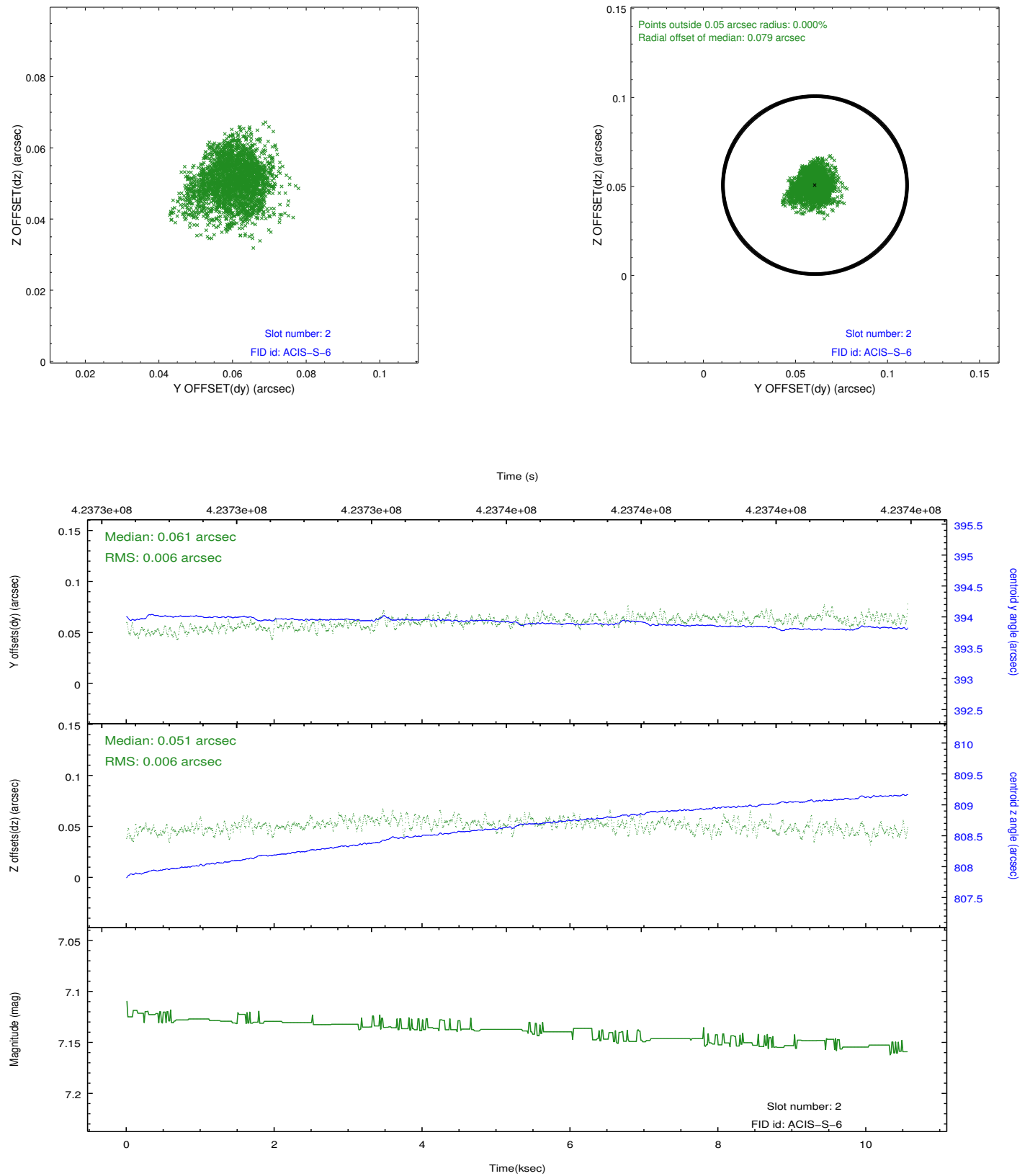
2.5.1 Slot 0



2.5.2 Slot 1



2.5.3 Slot 2



A Summary

A.1 Status

V&V Scientist	Beth Sundheim
V&V Date (YYYY-MM-DD)	2012.03.09
V&V Edition	1
V&V Disposition and Status	OK
V&V Charge Time	10.148977743089

A.2 Comments

A spatial region of the original bias map for CCD = 9 suffered from anomalously high data values. Pixels in the event data that were bias-corrected by one of the original affected bias pixels may have an apparent energy shift. While the change in energy is expected to be small (~ 20 eV), it depends on many parameters that have not yet been fully explored for this bias anomaly. The bias map for CCD = 9 has been reconstructed for this processing to remove this anomaly using scaled data from a comparable bias map from another observation. The pixels affected by the anomaly are bounded by sky coords: (225.91111, 2.15501), (225.91401, 2.15809), (225.88772, 2.18275), (225.88482, 2.17966).